

**PORTABLE AIR CONDITIONER**



**Williamson-Thermoflo**


**SERVICE AND INSTALLATION MANUAL**

MODEL N°: 12PRA

M00019-V01



This symbol denotes a caution or warning.

-  **Caution:**
- Please read these instructions carefully before installing and operating your Williamson-Thermoflo portable air conditioner. They will help you to derive the maximum benefit from your air conditioner.
  - The air conditioner should always be operated or stored in an upright position. If you have any reason to believe that it was not always in an upright position during the 24 hours before you acquired it, leave it upright for 24 hours before attempting to operate it. This will help to ensure that your air conditioner will run properly.

Introduction	1
Technical specifications	2
Disassembly illustration	3
Parts list per model	4-6
Accessories	7
Installation instructions	8-11

# INTRODUCTION

---

For future reference, we suggest you attach a copy of your sales slip/receipt to this page, along with the following information which is located on the manufacturer's nameplate located on the side of the unit. You will be asked this information if your unit requires servicing and/or for general inquiries.

Model number: \_\_\_\_\_

Serial number: \_\_\_\_\_

Date of purchase: \_\_\_\_\_

Date of installation: \_\_\_\_\_

Dealer's Name and Address: \_\_\_\_\_  
\_\_\_\_\_

## SPECIFICATIONS

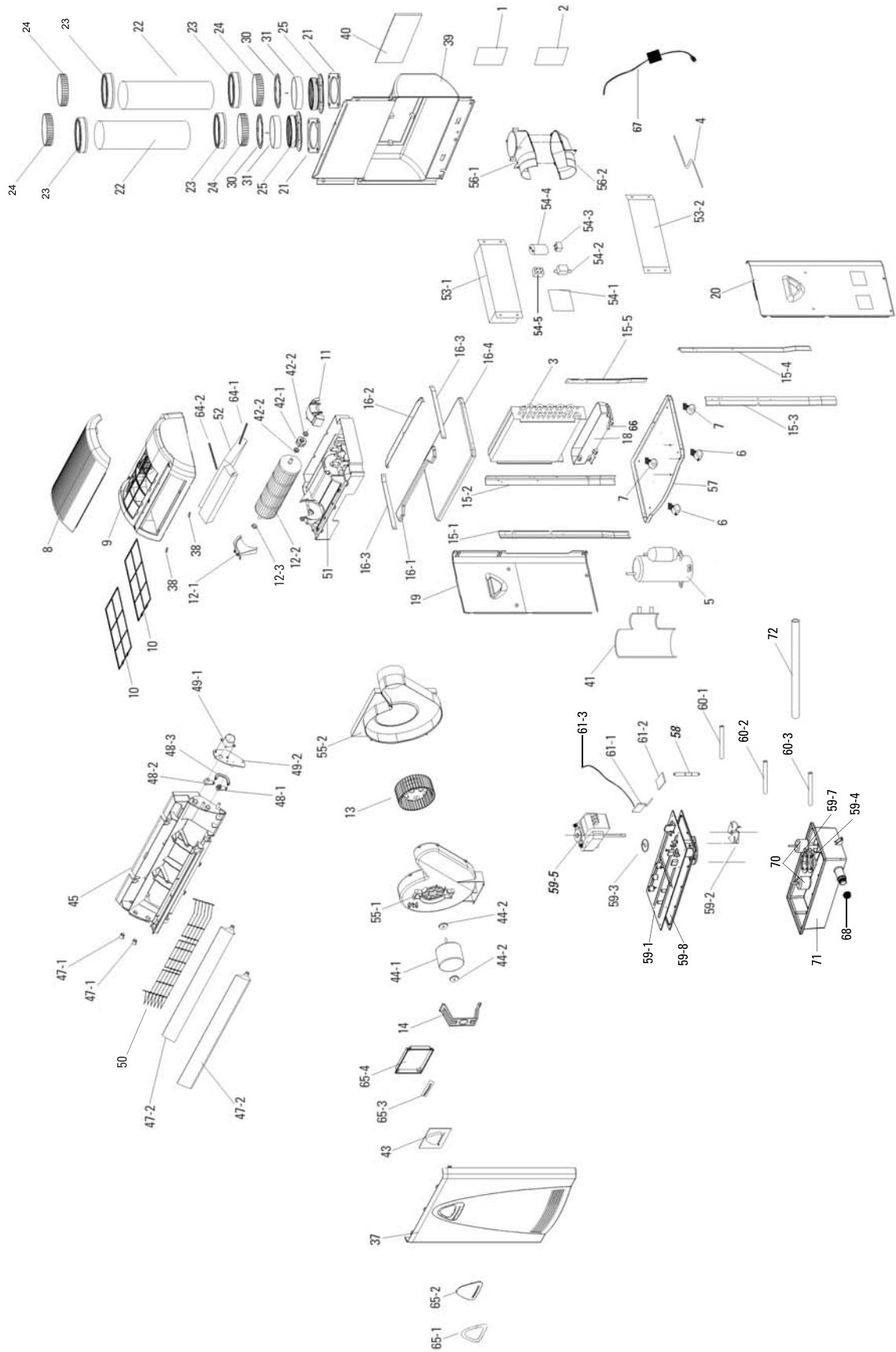
MODEL		12PRA		
<b>Features</b>				
Operating modes (cooling, dehumidifying, automatic)		3 in 1 model		
Control		Electronic		
Refrigerant type		R-22		
Fan speeds		3 + automatic		
Automatic restart function for power failure		Yes		
Remote control		Yes		
Built-in pump		Yes		
Clock and 24-hour timer		Yes		
<b>Performance ratings</b>				
Cooling capacity	BTU/h	11 600		
Cools up to	SQFT	700 (65)		
Fan speeds (High-Medium-Low)	RPM	1250-1150-900		
Dehumidifying capacity	Pt./H	2.56 (1.2)		
Air circulation (High)	CFM	204 (347)		
Indoor sound rating (High-Medium-Low)	dB(A)	51-50.6-50		
Thermostat settings	°F	64~88 (18~31)		
Temperature (Cooling)	°F	Maximum	109 (43)	
		Minimum	64 (18)	
<b>Electrical data</b>				
Voltage rating	V	115		
Frequency / Phase	Hz / Ø	60 / 1		
Running amperes	A	11.8		
Recommended fuse size	A	15		
Power input	W	1200		
Power cord length	in.	98 (250)		
<b>Dimensions &amp; weight</b>				
Flexible hoses length	in.	64 (1625)		
Drain hose length	in.	84 (2142)		
Unit	Dimensions	in.	Width	23-1/2 (597)
			Height	34-1/2 (902)
			Depth	30-1/4 (768)
		Weight	lbs	Net
Carton	Dimensions	in.	Width	25-1/4 (674)
			Height	35 (890)
			Depth	21-1/2 (550)
		Weight	lbs	Shipping

\*Note: Design and specifications are subject to change without notice for product improvement.



# DISASSEMBLY ILLUSTRATION

See Installation instructions p.8



## PARTS LIST PER MODEL

Ref. No.	Description	Qty	Part N°
1	Rating plate (Williamson-Thermoflo)	1	L00156
2	Wiring diagram	1	L00132
3	Condenser assembly	1	P00488
4	Capillary assembly	1	P00489
5	Compressor	1	P00385
6	Wheel front (stopper)	2	P00386
7	Wheel back	2	P00387
8	Faceplate - top	1	P00388
9	Case - middle	1	P00389
10	Filter assembly	2	P00390
11	Cover - indoor fan motor	1	P00391
12	<b>Cross fan assembly</b>	Kit	<b>K00051</b>
12-1	Shaft holder-cross flow fan	1	P00392
12-2	Cross fan	1	P00393
12-3	Cross fan cushion	1	P00394
13	Centrifugal fan	1	P00490
14	Bracket - Condenser fan motor	1	P00491
15	<b>Vertical brackets assembly</b>	Kit	<b>K00052</b>
15-1	Vertical bracket(1)	1	P00397
15-2	Vertical bracket(2)	1	P00398
15-3	Vertical bracket(3)	1	P00399
15-4	Vertical bracket(4)	1	P00400
15-5	Vertical bracket(5)	1	P00401
16	<b>Clapboard assembly</b>	Kit	<b>K00053</b>
16-1	Case - bottom - bracket (1)	1	P00402
16-2	Case - bottom - bracket (2)	1	P00403
16-3	Horizontal bracket	2	P00404
16-4	Clapboard - Middle	1	P00405
17	Base (painted)	1	P00406
18	Condenser box	1	P00492
19	Left panel	1	P00408
20	Right panel	1	P00409
21	Square rubber gasket	2	P00410
22	Flexible hose (inlet/outlet)	2	P00411
23	Directional eyeball	4	P00412
24	Lock ring	4	P00413
25	Connector	2	P00414
26	Windows panel (A) with 2 holes	1	P00493
27	Windows panel (B)	1	P00494
28	Flaps for air exhaust hose	Kit	<b>K00072</b>
28-1	Part #1	1	P00496
28-2	Part #2	1	P00497
28-3	Part #3	1	P00498
29	Window flange	2	P00499

# PARTS LIST PER MODEL

Ref. No.	Description	Qty	Part N°
30	Seal gasket	4	P00421
31	White rubber holder	4	P00422
33	Stopper	2	P00423
35	Fixed louvers air intake	1	P00425
36	Remote control & holder	1	P00500
37	Front panel	1	P00501
38	Screw cap cover	2	P00428
39	back panel	1	P00502
40	back panel door	1	P00430
41	Insulation material (Compressor)	1	P00431
42	<b>Evaporator fan motor assembly</b>	Kit	<b>K00073</b>
42-1	Evaporator fan motor	1	P00503
42-2	Motor cushion	2	P00504
43	PCB (display screen)	1	P00505
44	<b>Condenser fan motor assembly</b>	Kit	<b>K00074</b>
44-1	Condenser fan motor	1	P00506
44-2	Motor cushion	2	P00507
45	Casing set	1	P00508
47	Flow control bar	2	P00441
48	<b>Axis of rotation assembly</b>	Kit	<b>K00059</b>
48-1	Axis of rotation 1	1	P00442
48-2	Axis of rotation 2	1	P00443
48-3	Axis of rotation rod	1	P00444
49	<b>Step motor assembly</b>	Kit	<b>K00060</b>
49-1	Step motor	1	P00445
49-2	Step motor installation board	1	P00446
50	Grid	1	P00509
51	Case assembly (bottom)	1	P00510
52	Evaporator assembly	1	P00511
	<b>Control box assembly</b>	Kit	<b>K00061</b>
53-1	Control box	1	P00450
53-2	Control box cover	1	P00451
54	<b>Electrical Parts assembly</b>	Kit	<b>K00110</b>
54-1	PCB	1	P00512
54-2	Transformer	1	P00513
54-3	Capacitor 8.0uf/250vac	1	P00454
54-4	Capacitor 45uf/250vac	1	P00455
54-5	Relay	1	P00514
55	<b>Air outlet assembly</b>	Kit	<b>K00063</b>
55-1	Air outlet (front)	1	P00457
55-2	Air outlet (back)	1	P00458
56	<b>Air outlet connectors</b>		<b>K00064</b>
56-1	Upper air outlet connector	1	P00459
56-2	Lower air outlet connector	1	P00460



Ref. No.	Description	Qty	Part N°
59	<b>Pump assembly</b>	Kit	<b>K00077</b>
59-1	Water box cover	1	P00515
59-2	Fan (pump)	1	P00463
59-3	Seal ring	1	P00464
59-4	Pump cover	1	P00516
59-5	Pump	1	P00466
59-6	Seal gasket (for pump cover)	1	P00518
60	<b>Hoses</b>	Kit	<b>K00078</b>
60-1	Hose # 1	1	P00521
60-2	Hose # 2	1	P00522
60-3	Hose # 3	1	P00523
60-4	Plastic tubing (Right)	1	P00524
60-5	Plastic tubing (Left)	1	P00525
61	<b>Pump micro-switches</b>	Kit	<b>K00067</b>
61-1	Micro-switches	2	P00472
61-2	Micro-switch flakes	2	P00473
61-3	Micro-switch wires	2	P00474
64	Sensors (humidity + temperature)	1	P00479
65	<b>Front panel display assembly</b>	Kit	<b>K00079</b>
65-1	Display screen cover contour	1	P00526
65-2	Display screen cover	1	P00527
66	Display screen back cover	1	P00483
67	Power cord	1	P00528
68	Drain cap	1	P00529
69	Rubber plug	1	P00484
70	Floats	2	P00519
71	Water box	1	P00520
72	Draining tube	1	P00471
74	Panel D with 1 hole (Server room application - Optional)	1	P00715
75	Flexible hose connector (Server room application - Optional)	1	P00714
76	Round filter (Server room application - Optional)	1	P00723
77	Connector Base	2	P00724
78	Panel C (Door Installation)	1	P00950

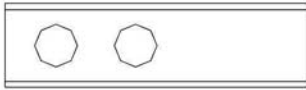
# ACCESSORIES

---

The following accessories are supplied with the air conditioner.

\*The quantities are indicated in parentheses.

**26.** Window panel with  
2 holes A (1)



**27.** Window panel B (1)



**29. (28,1-28,2-28,3)**  
Window flange with  
flaps for air exhaust (1)



**28.** Panel C (1)



Owner's manual (1)  
Service & installation  
manual (1)



**29. (35)** Window flange  
with fixed louvers for  
air intake (1)



**30.** Seal gasket (2)



**31.** White rubber  
holder (2)



**33.** Stopper (2)



**36.** Remote control  
and holder (1)



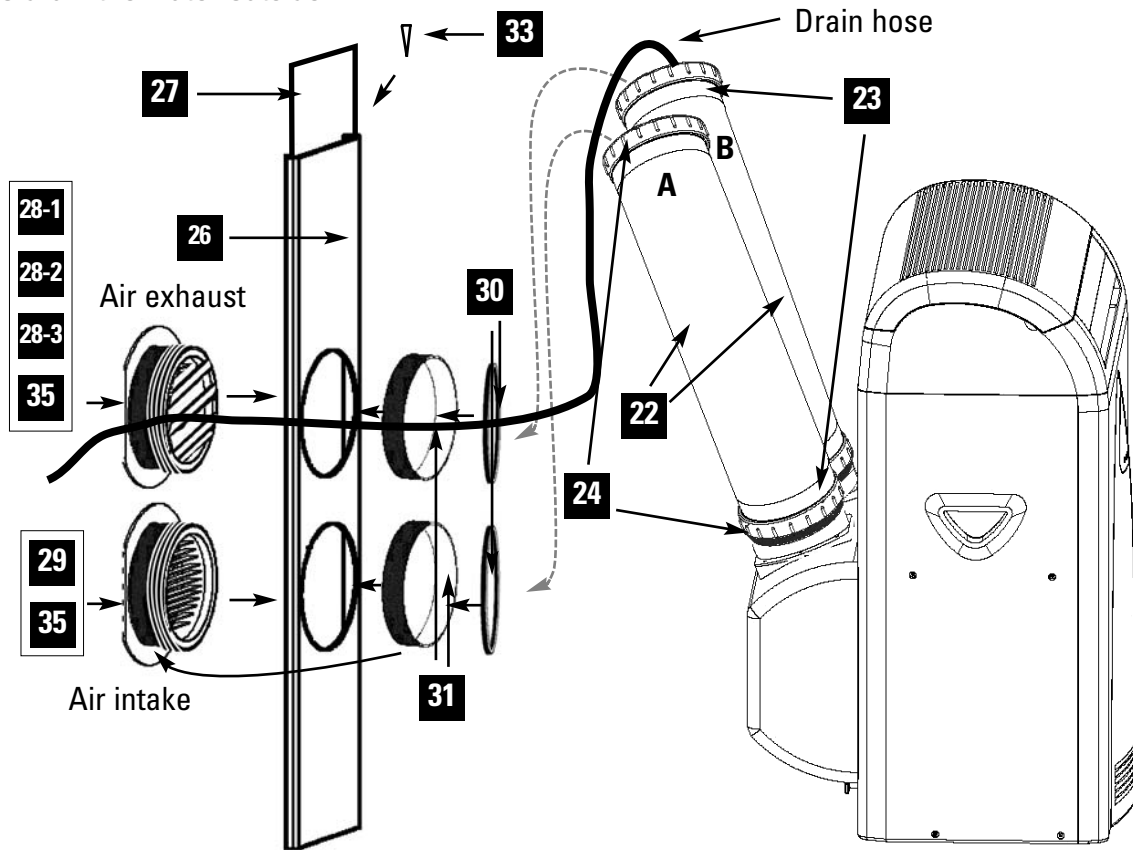
AAA batteries for  
remote control (2)



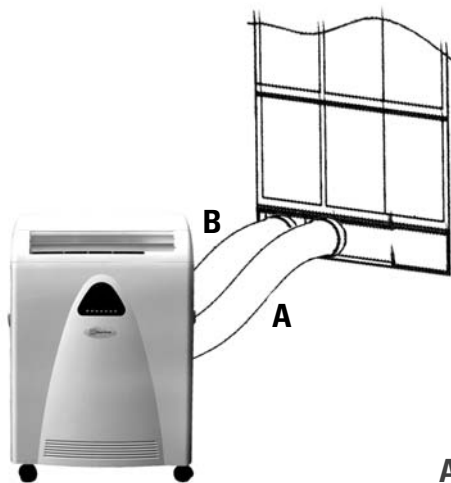
**Note:**  
Please check accessories to make sure that you have all the parts needed for installation.

1. Slide the outside window flanges through the holes in the window panel. Then, from the inside, place the rubber gaskets on the ends of the flanges, snugly against the window panel. Then, screw the lock rings onto the corresponding flanges, as shown on the illustration.

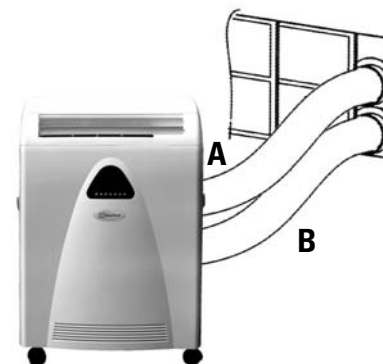
2. There is a small black hose for water drainage inside the air exhaust hose. The black hose must be passed through the window flange to drain the water outside.



**Horizontal window installation**



**Vertical window installation**



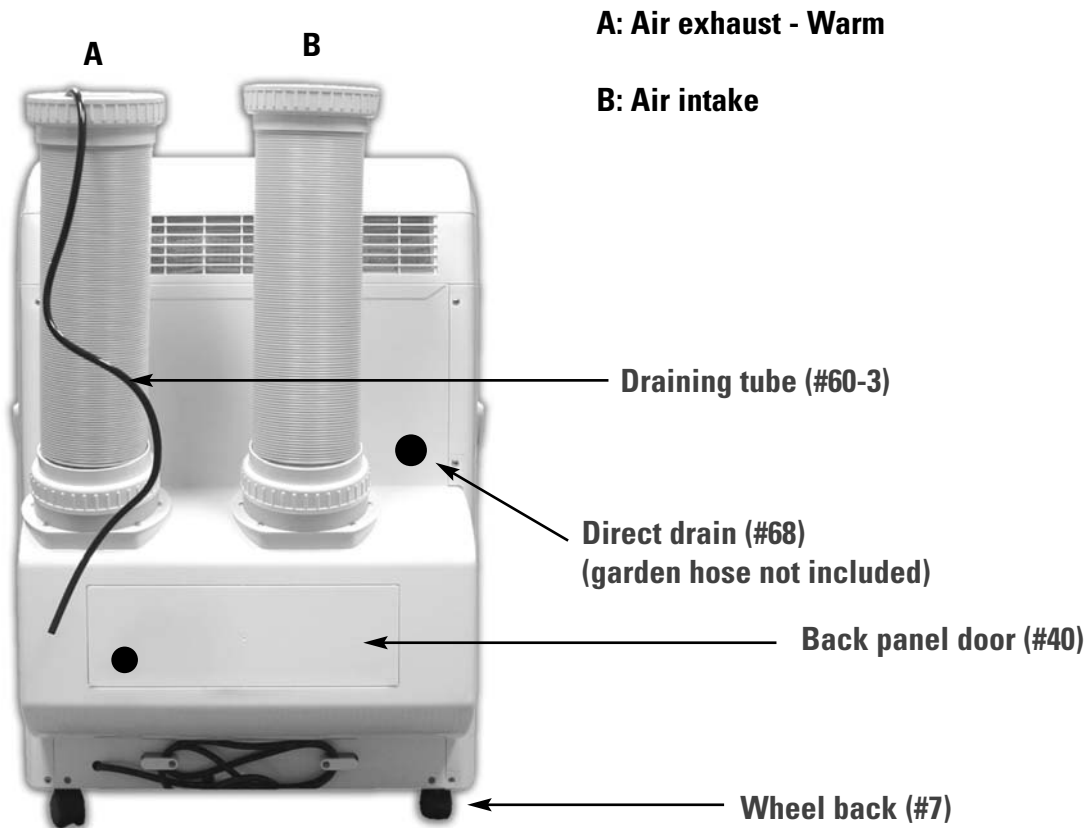
**A: Air exhaust - Warm**  
**B: Air intake**

The flange with flaps is designed to connect to the exhaust hose. The other flange (with fixed louvers) is designed to connect to the air-intake hose. If the adapter is installed vertically, the flange for the exhaust hose must be placed above the flange for the air-intake hose. This will prevent the air-intake hose from absorbing the hot and humid air expelled through the exhaust hose.

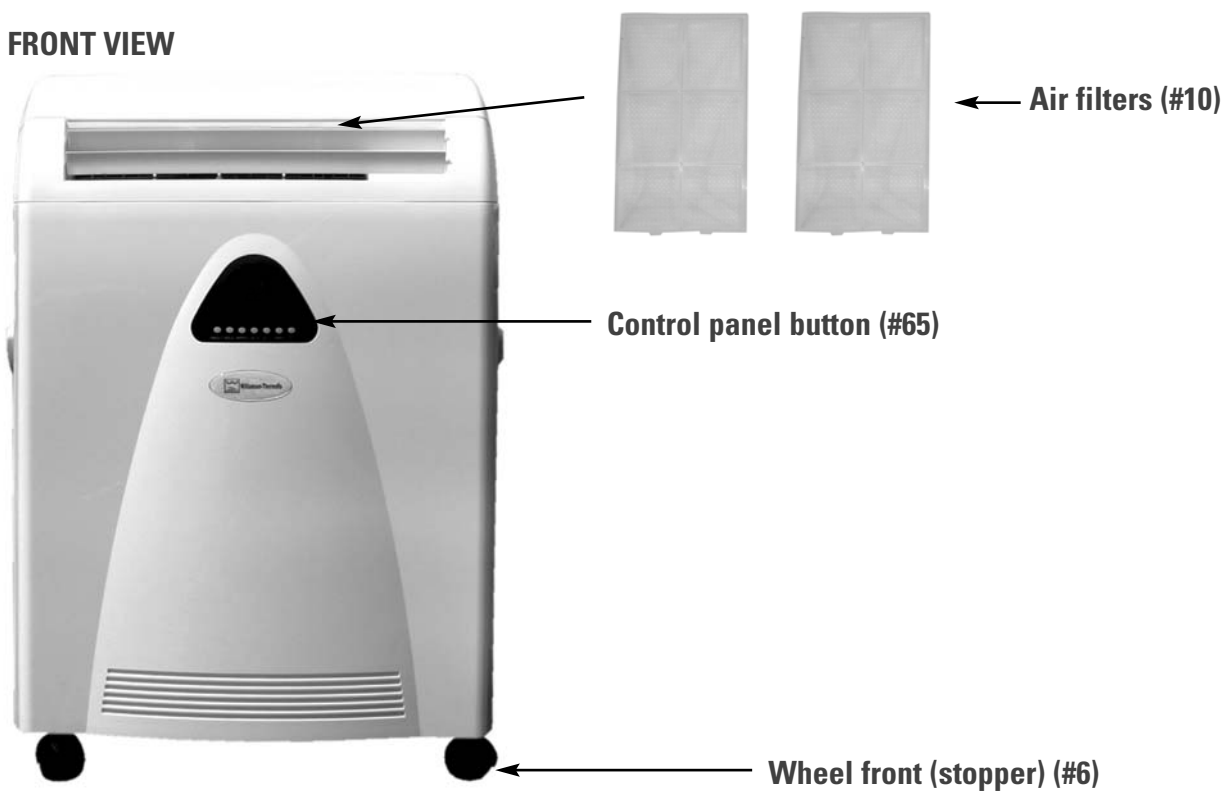
# INSTALLATION INSTRUCTIONS

---

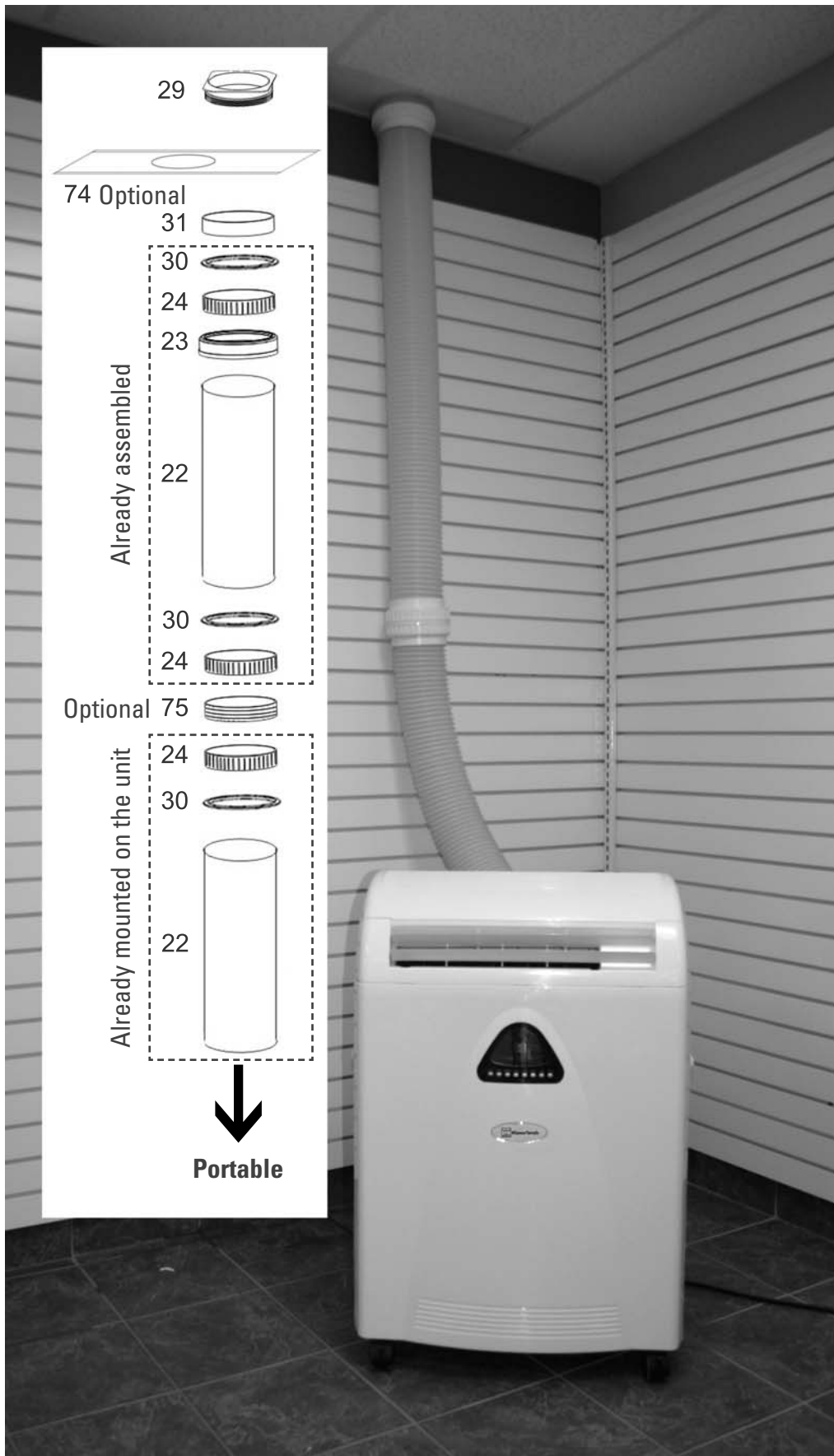
## BACK VIEW



## FRONT VIEW



# INSTALLATION INSTRUCTIONS (Computer room application)



29



74 Optional

31

30

24

23

Already assembled

22

30

24

Optional 75

24

30

Already mounted on the unit

22



Portable

INSTALLATION INSTRUCTIONS (Computer room application)





**Williamson-Thermoflo**

8201 W. Calumet Road, Milwaukee, WI 53223 USA

[www.williamson-thermoflo.com](http://www.williamson-thermoflo.com)