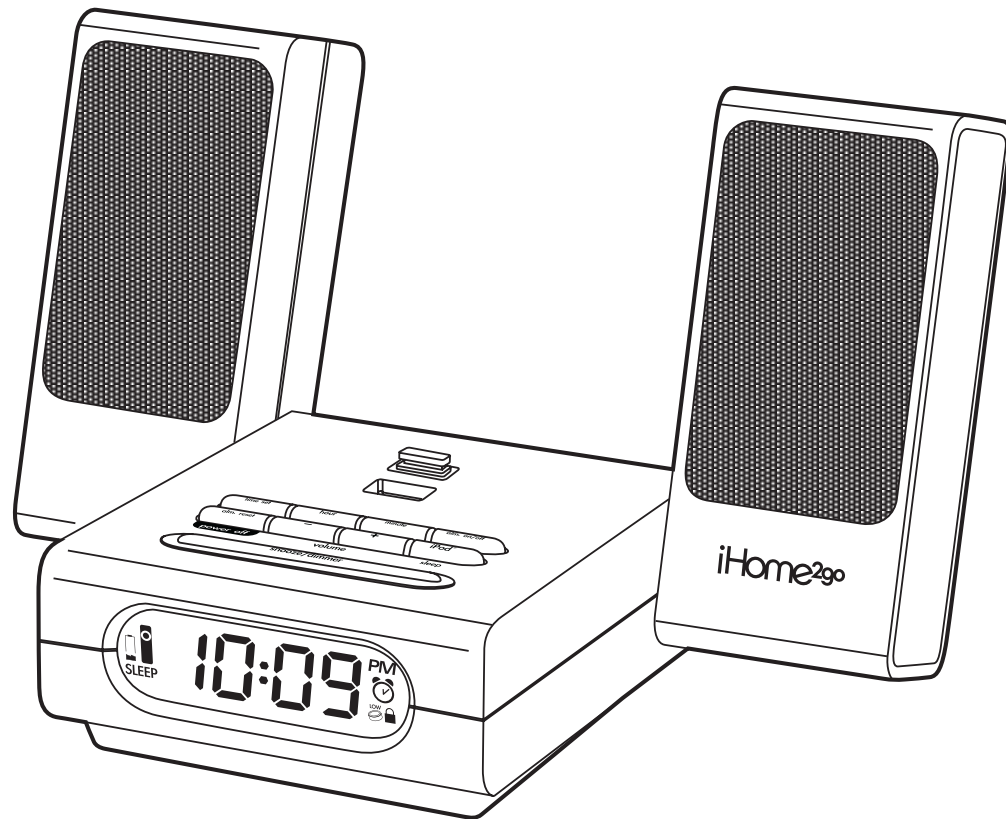


# iHome™

Model iH18  
**Portable System**  
For Your iPod® Shuffle





# **IMPORTANT**

**Read before proceeding**

If you have any questions regarding the operation or use of this product, please visit **[www.ihomeaudio.com](http://www.ihomeaudio.com)**

To learn more about this and other iHome products, please visit us online at **[www.ihomeaudio.com](http://www.ihomeaudio.com)**

# Table of Contents

---

<b>A Consumer Guide to Product Safety</b> .....	3
Safety Instructions .....	
<b>Getting Started</b> .....	4-5
Install AC Adaptor .....	
Stabilizer .....	
Install/Replace Backup and Speaker Batteries .....	
<b>Controls and Indicators</b> .....	6
<b>Setting Up the iH18</b> .....	7
Setting Clock Time .....	
Setting Alarm Time .....	
<b>Charging your iPod® Shuffle</b> .....	7
<b>Listening to your iPod® Shuffle</b> .....	8
<b>Listening to a non-docking iPod® or other portable audio devices</b> .....	8
<b>Alarm Operation</b> .....	9
<b>Travel Lock</b> .....	9
<b>Sleep Operation</b> .....	10
<b>Snooze/Dimmer Operation</b> .....	10
<b>Troubleshooting</b> .....	11-14
<b>Warranty Information</b> .....	15

## IMPORTANT SAFETY INSTRUCTIONS

When used in the directed manner, this unit has been designed and manufactured to ensure your personal safety. However, improper use can result in potential electrical shock or fire hazards. Please read all safety and operating instructions carefully before installation and use, and keep these instructions handy for future reference. Take special note of all warnings listed in these instructions and on the unit.

1. **Water and Moisture** – The unit should not be used near water. For example: near a bathtub, washbowl, kitchen sink, laundry tub, swimming pool or in a wet basement.
2. **Ventilation** – The unit should be situated so that its location or position does not interfere with its proper ventilation. For example, it should not be situated on a bed, sofa, rug or similar surface that may block ventilation openings. Also, it should not be placed in a built-in installation, such as a bookcase or cabinet, that may impede the flow of air through the ventilation openings.
3. **Heat** – The unit should be situated away from heat sources such as radiators, heat registers, stoves or other appliances (including amplifiers) that produce heat.
4. **Power Sources** – The unit should be connected to a power supply only of the type described in the operating instructions or as marked on the appliance.
5. **AC Adaptor Protection** – Power supply cords should be routed so that they are not likely to be walked on or pinched by items placed upon or against them. It is always best to have a clear area from where the cord exits the unit to where it is plugged into an AC outlet.
6. **Cleaning** – The unit should be cleaned only as recommended. See the Maintenance section of this manual for cleaning instructions.
7. **Objects and Liquid Entry** – Care should be taken so that objects do not fall and liquids are not spilled into any openings or vents located on the product.
8. **Attachments** – Do not use attachments not recommended by the product manufacturer.
9. **Lightning and Power Surge Protection** – Unplug the unit from the wall outlet and disconnect the antenna or cable system during a lightning storm or when it is left unattended and unused for long periods of time. This will prevent damage to the product due to lightning and power-line surges.
10. **Overloading** – Do not overload wall outlets, extension cords, or integral convenience receptacles as this can result in a risk of fire or electric shock.
11. **Damage Requiring Service** – The unit should be serviced by qualified service personnel when:
  - A. the power supply cord or plug has been damaged.
  - B. objects have fallen into or liquid has been spilled into the enclosure.
  - C. the unit has been exposed to rain.
  - D. the unit has been dropped or the enclosure damaged.
  - E. the unit exhibits a marked change in performance or does not operate normally.
12. **Periods of Nonuse** – If the unit is to be left unused for an extended period of time, such as a month or longer, the AC adaptor should be unplugged from the unit to prevent damage or corrosion.
13. **Servicing** – The user should not attempt to service the unit beyond those methods described in the user's operating instructions. Service methods not covered in the operating instructions should be referred to qualified service personnel.

Questions? Visit [www.ihomeaudio.com](http://www.ihomeaudio.com)  
or call 1-800-288-2792 Toll Free

# Getting Started

Thank you for purchasing the iHome iH18 portable system for your iPod Shuffle. Designed specifically to work with your iPod Shuffle, this system provides high quality audio anywhere and also charges your shuffle. Please read this instruction book carefully before operating the iH18, and keep it for future reference.

## Install AC Adaptor

Connect the AC adaptor cable plug into the jack on the back of the system, then plug the AC adaptor into the wall outlet. When connected to the AC adaptor, the iH18 charges your iPod shuffle and allows you to play your iPod shuffle and to sleep to it.

**NOTE: The iPod shuffle does NOT charge when the iH18 is operating on batteries. This AC adaptor is for use with the iH18 ONLY. To avoid damage, do not use with cameras or any other devices.**

## Stabilizer

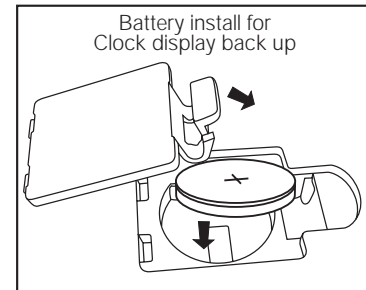
There is a Stabilizer located on the bottom rear of the unit. Extended, this provides additional stability when the speakers are rotated to the upright position. To extend the stabilizer, turn the unit over (make sure no shuffle is docked) and press up with both thumbs until the tray is fully extended. Reverse procedure to return tray to home position.

## Install/Replace Backup Battery

The iH18 uses a CR2032 button cell backup battery system to provide continuous alarm operation and clock settings in the event of a power failure. If the Backup Battery has been installed and a power failure occurs or the AC cord is accidentally disconnected, the display will not remain lit, but the current time and alarm time settings will be temporarily maintained. Otherwise, you must reset the time and alarm settings.

One CR 2032 clock backup battery is included with your unit and should be installed to keep the clock running if the power is interrupted. In the future, if the unit has no display or the Backup Battery Low Icon located on the right bottom of the display is flashing, it is time to replace the backup battery.

1. Please make sure the AC adaptor is connected. Otherwise all settings may be lost during battery replacement.
2. Open backup battery compartment cover located on the bottom of the unit.
3. Insert one CR2032 button cell battery, checking that the polarity ( + and – ends of the batteries) matches the drawing near the battery compartment. Close the compartment cover.



# Getting Started

## Install/Replace Speaker Batteries

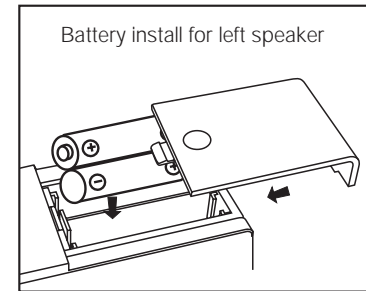
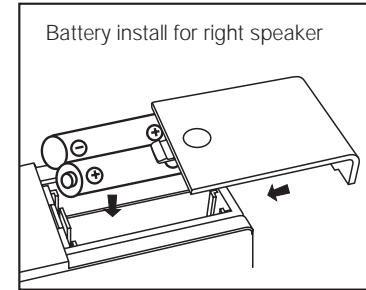
1. Open speaker battery compartment cover located on the back of the speaker.
2. Insert 2 "AA" batteries (each speaker), checking that the polarity (+ and - ends of the batteries) matches the drawing inside the battery compartment. We recommend the use of alkaline batteries for longer life. Different types of batteries or new and used batteries are not to be mixed. Close the compartment cover.

## Batteries information:

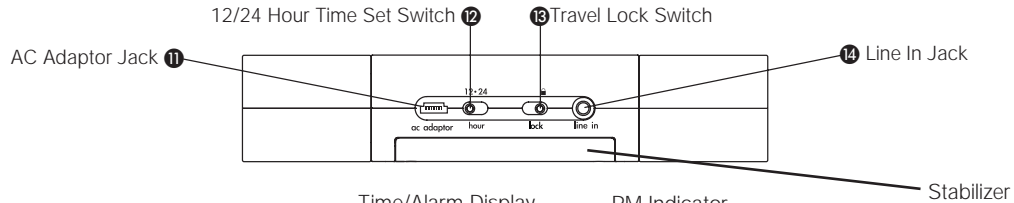
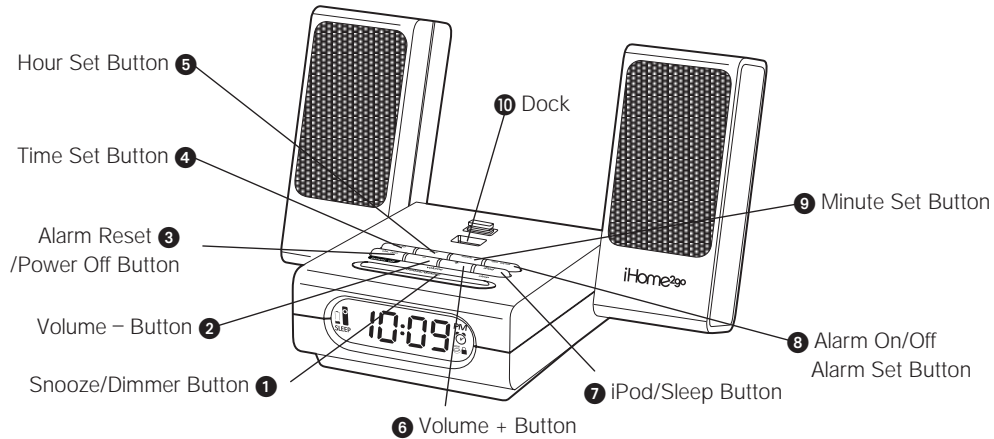
- Do not mix old and new batteries.
- Do not mix alkaline, standard (carbon -zinc) or rechargeable (nickel-cadmium) batteries.
- Make sure you dispose of batteries properly (see your local regulations).

## Maintenance

- Place the unit on a level surface away from sources of direct sunlight or excessive heat.
- Protect your furniture when placing your unit on a natural wood and lacquered finish. A cloth or other protective material should be placed between it and the furniture.
- Clean your unit with a soft cloth moistened only with mild soap and water. Stronger cleaning agents, such as Benzene, thinner or similar materials can damage the surface of the unit.



# Controls and Indicators



# Setting Up the iH18

---

## Setting Clock Time

This unit has a 12/24 hour Time Set Switch (located on the back of the unit) which allows you to display the time in standard 12 hour AM and PM mode or in 24 hour display mode. In 12 hour mode, 1 o' clock in the afternoon displays as 1:00 with the PM indicator. In 24 hour mode, this displays as 13:00 with no PM indication.

1. Press and hold the **4 Time Set Button** located on the top of the unit for 2 seconds until the display flashes. Press the **5 Hour Set Button** or **9 Minute Set Button** until the current time is displayed. When using the 12 hour display, remember to set the correct AM or PM (an icon to the right of the time display is the **PM indicator**; there is no AM indicator).
2. Press the **4 Time Set Button** again to confirm clock setting. You should hear 2 beeps indicating the clock time is set.

## Setting Alarm Time

1. Press and hold the **8 Alarm Set Button** for 2 seconds until the display flashes. Press the **5 Hour Set Button** or **9 Minute Set Button** until the desired alarm time is displayed. When using the 12 hour display, remember to set the correct AM or PM (an icon to the right of the time display is the **PM indicator**; there is no AM indicator).
2. Press the **8 Alarm Set Button** again to exit the setting mode. You should hear 2 beeps indicating the alarm time is set.

Note: Once you set the alarm time, the alarm will be automatically armed. The **Alarm Icon** will appear to indicate the alarm is armed.

## Charging your iPod® Shuffle

---

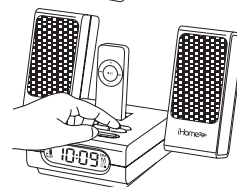
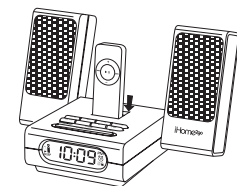
1. Your iPod shuffle recharges (until fully charged) while the shuffle is docked in the system and the iH18 is connected to an outlet with the included AC power adaptor. **Your shuffle will NOT charge when the unit is running on battery power.**



# Listening to your iPod® Shuffle

1. Rotate speakers into upright position. Dock the iPod® Shuffle and turn it on (see the instructions that came with your Shuffle for details on operating the Shuffle).
  2. Press the **7 iPod Button** on the iH18 once. ON and the **iPod Icon** will appear on the iH18 LCD display, showing iPod® Shuffle is in playing mode.
  3. Press the **Play Button** on your Shuffle to play music, and again to pause play; press again to resume play.
  4. Press **6 Volume + / 2 Volume - Button** to adjust the system volume.
- Adjust the volume on your Shuffle to no more than 70% to avoid distortion.
5. To turn off the unit, press the **3 Alarm Reset/Power Off Button**.

Note: When you turn off your iPod shuffle, its sound level automatically reverts to a lower level. You may need to adjust the volume level the next time you turn it on to enjoy your previous listening level.

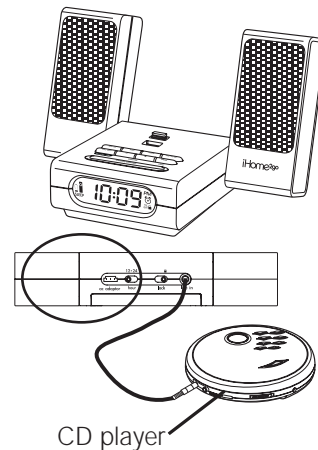


## Listening to a non-docking iPod® or other portable audio devices

If you have an iPod® without a docking port or other MP3 player or other portable audio device, you can still play it through the iH18 via the Line-in Jack.

**NOTE: To use the Line in Jack, make sure the iPod® Shuffle is not playing in the iH18.**

1. Plug one end of the audio patchcord (included) into the headphone or line-out jack on your device and the other end of the patchcord into the iH18 **14 Line-in Jack**, located on the back of the unit.
2. Turn on and play your device. If iH18 is off, press the **7 iPod Button** on the iH18.
3. Press **6 Volume + / 2 Volume - Button** on the iH18 to adjust the system volume. You may need to adjust your device volume, too.
4. To turn off the unit, press the **3 Alarm Reset/Power Off Button**. Please remember to turn off your device, too.
5. If there is no music playing for 3 minutes, the iH18 will auto power off.



# Alarm Operation

---

1. Set the alarm time per *Setting Alarm Time* (see page 7).
2. Press the **8 Alarm On/Off Button** to arm or disarm the alarm. When armed, the alarm time displays for 2 seconds.
3. When the alarm is sounding, press the **3 Power Off/Alarm Reset Button** on the iH18 to turn the alarm OFF. The alarm will come on again the next day at the same time.
4. To stop the alarm from coming on the following day, press the **8 Alarm On/Off Button** to turn it OFF. The **Alarm Icon** will disappear to indicate the alarm is disarmed.
5. If the alarm is not turned off after it sounds it will beep for approximately 1 hour then turn off automatically. This cycle will repeat every 24 hours unless the controls are changed.

## Travel Lock

---

The iH18 features a Travel Lock Switch (located on the back of the unit) to prevent settings from being inadvertently changed if buttons are accidentally depressed in transit. When the Travel Lock Switch is in locked position, all button functions are blocked and the locked icon will appear on screen. Move the Travel Lock switch to the unlocked position to enable all button functions.

NOTE: To avoid possible damage, make sure your shuffle is not docked in the iH18 during transit.

## Sleep Operation

---

1. While listening to your iPod® Shuffle, press the **7 Sleep Button** to enter sleep mode. The unit will automatically turn off after the selected time. Sleep mode has a Gentle Sleep feature which gradually lowers the volume.
2. You can adjust the sleep timer from 90, 60, 30 or 15 minutes by pressing the **7 Sleep Button** again. Pressing the **7 Sleep Button** while sleep is set to 15 minutes will exit sleep mode and return to normal play function.
3. When the display changes back to show the real time, pressing the **7 Sleep Button** once will show the sleep time remaining. Pressing it again will change sleep time to the next lowest increment or exit.
4. The iH18 has an independent volume setting for sleep mode so you can adjust the sleeping volume without affecting the alarm volume. Press **6 Volume +** and **2 Volume -** Button to adjust sleep volume. The sleep volume will remain at that level the next time you enter sleep mode until controls are changed.
5. To stop listening at any time, press the **3 Alarm Reset/Power Off Button**.

Note: The shuffle only charges when connected to AC power. Use the AC adaptor for sleep mode to avoid draining the charge on your Shuffle.

## Snooze/Dimmer Operation

---

1. Press the **1 Snooze/Dimmer Button** on the iH18 after the alarm sounds. The alarm will shut off and will come on again in approx. 9 minutes. You may repeat this cycle several times during the 1 hour alarm cycle.
2. During normal operation and in snooze mode, press the **1 Snooze/Dimmer Button** to control the brightness of the LCD display.

# Troubleshooting

Symptom	Possible Problem	Solution
Unit doesn't respond (no power)	AC adaptor isn't plugged into a wall outlet or the connector is not plugged into the power supply jack on the back of the unit	Plug the AC adaptor into a wall outlet and plug the connector into the supply jack on the unit
	Wall outlet is not functioning.	Plug another device into the same outlet to confirm the outlet is working
iPod shuffle does not dock properly	iPod shuffle didn't install properly	Remove your iPod shuffle from the dock and check for obstruction on the connectors in the dock and on your iPod shuffle. Then reseat it in the dock.
Battery Low icon always flashing	Batteries are weak	Replace with new batteries
	Batteries were not installed properly	Check to make sure the polarity ( + and – ends) matches the diagram in the battery compartment
iPod Shuffle does not respond to the unit	iPod Shuffle is not installed properly	Remove your iPod shuffle from the dock and check for an obstruction on the connectors in the dock and on your iPod shuffle. Then place it back in the dock.
	iPod Shuffle is locked up	Please make sure your iPod shuffle is working properly before docking into the unit. Please refer to your iPod shuffle manual for details.
Buttons/Controls don't work	Travel Lock is ON, disabling button	Make sure Travel Lock switch is in unlocked position

# Troubleshooting

Symptom	Possible Problem	Solution
iPod Shuffle didn't charge up	iPod Shuffle is not installed properly	Remove your iPod Shuffle from the dock and check for an obstruction on the connectors in the dock and on your iPod Shuffle. Then place it back in the dock.
	iPod Shuffle is locked up/ frozen	Please make sure your iPod Shuffle is working properly before docking into the unit. Please refer to your iPod Shuffle manual for details.
	iPod Shuffle battery has problem	
Sound is distorted	Volume level is set too high	Decrease the volume
	Sound source is distorted	If the iPod Shuffle original sound source (MP3) is of poor quality, distortion and noise are easily noticed with high-power speakers. Try a different audio source such as a music CD.
		If you are using an external sound source like older generation of iPod, try reducing the output volume on the device itself. Also try turning bass boost OFF in the EQ menu.

# Solucionando problemas

Síntoma	Causa	Solución
La unidad no funciona (no circula corriente eléctrica)	El adaptador de AC no está conectado al tomacorriente o el conector no está conectado a la ficha en la parte posterior de la unidad	Conecte el adaptador de AC al tomacorriente y también conecte el conector a la ficha en la parte posterior de la unidad
	El tomacorriente no funciona	Coloque otro aparato en ese mismo tomacorriente para confirmar si el que no funciona es el tomacorriente
El iPod Shuffle no encastra correctamente	El iPod Shuffle no encastra correctamente	Quite el iPod Shuffle del encastre y retire la posible obstrucción del encastre o de su iPod Shuffle. Vuelva a colocar el iPod Shuffle dentro del encastre.
El icono de batería baja está destellando	Las baterías están gastadas	Reemplace las baterías
	Las baterías no están instaladas correctamente	Verifique que la polaridad de las baterías (- y +) se encuentren de acuerdo al diagrama del compartimiento de baterías.
El iPod Shuffle no se comunica con la unidad	El iPod Shuffle no está instalado correctamente	Quite el iPod Shuffle del encastre y verifique posibles obstrucciones del encastre o de su iPod Shuffle. Vuelva a colocar el iPod Shuffle dentro del encastre.
	El iPod Shuffle no responde	Verifique que su iPod Shuffle funcione correctamente antes de conectarlo a la unidad. Refiérase al manual de su iPod para más detalles.
Los botones/ controles no funcionan	La Traba para Viaje se encuentra en ON (trabada), y no habilita las funciones de los botones	Asegúrese que la Traba para Viaje esté en la posición OFF (destrabada)

# Solucionando problemas

Síntoma	Causa	Solución
El iPod Shuffle no carga	El iPod Shuffle no está instalado correctamente	Quite el iPod Shuffle del encastre y retire la posible obstrucción del encastre o de su iPod Shuffle. Vuelva a colocar el iPod Shuffle dentro del encastre.
	El iPod está trabado/no responde	Por favor asegúrese de que su iPod Shuffle funcione correctamente antes de colocarlo en el encastre. Refiérase al manual de su iPod Shuffle para mayor información.
	La batería del iPod Shuffle podría tener algún inconveniente	
El sonido sale distorsionado	El volumen se encuentra muy alto	Baje el volumen
	El sonido sale distorsionado de la unidad	Si el sonido original de su iPod Shuffle era de pobre calidad, las distorsiones y ruidos se harán más notables con los parlantes de alta potencia. Pruebe utilizar otra fuente de audio como un CD.
		Si está utilizando un iPod Shuffle de primeras generaciones o un Shuffle, intente bajar el volumen de su aparato. También intente apagar el amplificador de bajos

# Limited 90-Day Warranty Information

---

iHome Products, a division of SDI Technologies Inc. (hereafter referred to as SDI Technologies), warrants this product to be free from defects in workmanship and materials, under normal use and conditions, for a period of 90 days from the date of original purchase.

Should this product fail to function in a satisfactory manner, it is best to first return it to the store where it was originally purchased. Should this fail to resolve the matter and service still be required by reason of any defect or malfunction during the warranty period, SDI Technologies will repair or, at its discretion, replace this product without charge (except for a \$10.00 charge for handling, packing return UPS/postage, and insurance). This decision is subject to verification of the defect or malfunction upon delivery of this product to the Factory Service Center listed below. The product must include proof of purchase, including date of purchase. The fee for service without proof of purchase is \$30.00.

Before returning this product for service, please first replace the batteries (if applicable) with fresh ones, as exhausted or defective batteries are the most common cause of problems encountered.

If service is still required:

1. Remove the batteries (if applicable) and pack the unit in a well padded, heavy corrugated box.
2. Enclose a photocopy of your sales receipt, credit card statement, or other proof of the date of purchase, if within the warranty period.
3. Enclose a check or money order payable to the order of SDI Technologies, for the sum of \$10.00 (\$30.00 without proof of purchase).
4. Send the unit prepaid and insured, to the Factory Service Center listed below.

Consumer Repair Department  
SDI Technologies Inc.  
1330 Goodyear Dr.  
El Paso, TX 79936

## Disclaimer of Warranty

NOTE: This warranty is valid only if the product is used for the purpose for which it was designed. It does not cover (i) products which have been damaged by negligence or willful actions, misuse or accident, or which have been modified or repaired by unauthorized persons; (ii) cracked or broken cabinets, or units damaged by excessive heat; (iii) damage to digital media players, CD's or tape cassettes (if applicable); (iv) the cost of shipping this product to the Factory Service Center and its return to the owner.

This warranty is valid only in the United States of America and does not extend to owners of the product other than to the original purchaser. In no event will SDI Technologies or any of its affiliates, contractors, resellers, their officers, directors, shareholders, members or agents be liable to you or any third party for any consequential or incidental damages, any lost profits, actual, exemplary or punitive damages. (Some states do not allow limitations on implied warranties or exclusion of consequential damages, so these restrictions may not apply to you.) This warranty gives you specific legal rights, and you may also have other rights which vary from state to state. Your acknowledgement and agreement to fully and completely abide by the above mentioned disclaimer of warranty is contractually binding to you upon your transfer of currency (money order, cashier's check, or credit card) for purchase of your SDI Technologies product.

**Questions? Visit [www.ihomeaudio.com](http://www.ihomeaudio.com)  
or call 1-800-288-2792 Toll Free**