

**SAMSUNG**

**YH-999**  
Samsung Electronics Co.,Ltd

**SAMSUNG**



**YH-999**  
Samsung Electronics Co.,Ltd



**Portable Media Center**

- Mass Storage Device Support
- WMV & ASF Playback
- MP3 & WMA Playback
- Image File Viewer Function
- 3.5" Color TFT LCD
- High Speed Transfer via USB 2.0
- High-Fidelity Sound
- Built-in Rechargeable Lithium Battery



© 2004 Microsoft Corporation. All rights reserved. Microsoft, Windows, the Windows logo, and Windows Mobile are either registered trademarks or trademarks of Microsoft Corporation in the United States and/or other countries.

AH68-01636B (Rev1.0)

## Preparations

Safety Instructions .....	4
Battery Charger Safety .....	6
Charging the Battery .....	7
End User Notice .....	8
Features .....	9
Components .....	11
Location of Controls .....	12

## Connection to Computer

Connecting the Player to PC .....	14
Using Windows Media Player 10 .....	18
● Downloading Files .....	18
Using Other Functions .....	20
Using the Mass Storage Device .....	23
Connecting External Device .....	24
Updating Firmware .....	25

## Basic Usage

Turning unit On/Off and using the HOLD Function .....	27
● Turning On/Off .....	27
● HOLD Function .....	27

## Additional Usage

My TV .....	28
● Selecting My TV .....	28
● Playing the File .....	28
My Music .....	29
● Selecting My Music .....	29
● Playing the File .....	29

## Additional Usage

● Setting the Playback Mode and EQ .....	31
● Playlist Setting .....	32
● Playing the Playlist .....	32
My Pictures .....	33
● Selecting My Pictures .....	33
● Viewing Image File .....	31
● Viewing Slide Show .....	34
● Setting Slide Show .....	34
● Playing Music during Slide Show .....	34
My Videos .....	35
● Selecting My Videos .....	35
● Playing the File .....	35
Setting EQ .....	36
Setting the Display .....	37
● Backlight / Brightness / TV Out .....	37
Setting the Screen/Sound Effect .....	38
● Screen effects / Sounds .....	38
Setting the Regional Additional Function .....	39
● Language / Standards .....	39
Restoring Original Settings .....	40
Player Information .....	41




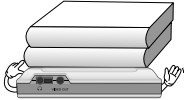





## Appendix

MENU Table .....	42
How to recover the Hardware Disc (HDD) .....	43

## Customer Support

Troubleshooting .....	46
Specifications .....	47
Communications Regulation Information .....	48
Warranty .....	50

Read and understand all the instructions to avoid injury to yourself and damage to the unit.

<p>Do not expose to extreme temperatures (above 95°F or below 23°F). Do not expose to moisture.</p> 	<p>Do not apply excessive pressure to the device. Do not drop the player.</p> 	<p>Do not let any foreign matter spill into the device.</p> 
<p>Do not place heavy objects on top of the device.</p> 	<p>Do not expose to chemicals such as benzene and thinners.</p> 	<p>Do not use the unit near any appliance that generates a strong magnetic field.</p> 
<p>Do not expose to direct sunlight or heat sources.</p> 	<p>Do not store in dusty areas.</p> 	<p>Do not try to disassemble and repair the device yourself.</p> 

\* Please be aware that we disclaim all responsibility for damages from loss of saved data due to breakdown, repair or other causes.

## Earphones

### Follow Traffic Safety Instructions

- Do not use the earphones while driving an automobile or riding a bicycle. It's not only dangerous, but also against the law.
- It may cause an accident if you turn up the volume of the earphones while walking, especially crossing at intersections.

### Protect your ears

- Do not turn up the volume too high. Doctors warn against prolonged exposure to high volume.
- Stop using the device or turn the volume down if you have ringing in your ears.

## Ambient operating conditions

- Ambient temperature : 5°C ~ 35°C (41°F ~ 95°F)
- Humidity : 10 ~ 75%

## Environmental Information

- Follow local guidelines for waste disposal when discarding packages, batteries, and old electronic appliances.
- yepp packages use cardboard, polyethylene etc., and do not use any unnecessary materials.



## CAUTION

RISK OF ELECTRIC SHOCK. DO NOT OPEN



The uninsulated parts inside the charger could cause electric shock. For your safety, do not open the charger's case.



Read this User Manual to prevent any problems that may occur while using the charger.

### Warning

- Use the charger away from water sources to avoid fire or electric shock.

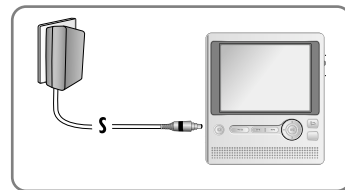
### Caution

- To avoid electric shock, use the charger only with a power outlet that matches the shape of the converter's plug.
- Make sure that the charger's plug is inserted all the way into the outlet.

A charger is supplied with your YH-999 Player

Plug the charger into a wall outlet and attach the player to the charger.

- \* When the battery is fully charged, the orange light will change to green.
- \* Battery recharge time in normal operation is approximately 4 hours.



### Caution

- Do not plug several devices into the same outlet.
- Do not use a charger that is defective.
- When using the rechargeable battery for the first time or after several months of non-use, fully charge it first.
- Do not charge the rechargeable battery for more than 12 hours.
- Overcharging or overdischarging will reduce the battery life.
- The rechargeable battery is a consumable item and its capacity will decrease gradually.
- Do not let metallic objects, such as necklaces or coins, come into contact with the terminals (metallic parts) of the charger and the built-in rechargeable battery. A fire or electric shock may result.
- Do not touch the charger with wet hands.

## End User Notice

Microsoft® Windows Mobile™ Software for Portable Media Centers

### Warning

Operating certain parts of this Device while driving can distract your attention away from the road, and possibly cause an accident or other serious consequences.

Do not change system settings while driving. Stop the vehicle in a safe and legal manner before attempting these operations. This is important since while setting up or changing some functions you might be required to distract your attention away from the road and remove your hands from the wheel.

## General Operation

### Prolonged Views of Screen

If you are driving, do not access any function requiring a prolonged view of the screen. Pull over in a safe and legal manner before attempting to access a function of the system requiring prolonged attention. Even occasional short scans to the screen may be hazardous if your attention has been diverted away from your driving task at a critical time.

### Volume Setting

Do not raise the volume excessively. Keep the volume at a level where you can still hear outside traffic and emergency signals while driving. Driving while unable to hear these sounds could cause an accident.

## WM DRM Device Labeling

This product is protected by certain intellectual property rights of Microsoft Corporation. Use or distribution of such technology outside of this product is prohibited without a license from Microsoft Corporation or an authorized Microsoft Corporation subsidiary."

## Mass Storage Device Support

- You can use the built-in 20GB hard drive to store your entire music library, plus use it as an external drive on your PC to store other data files.

## WMV & ASF Playback

- You can play back ASF and WMV files.
- You can convert various kinds of video files to WMV files using Windows Media Player 10.  
(Convertible File Formats: AVI, MPEG, MPE, MPG, AU, SND)

## MP3 & WMA Playback

- The player supports playback of both MP3 and WMA.

## Image File Viewer Function

- You can view image files in JPEG format.

## 3.5" Color TFT LCD

- You can enjoy high quality video and image files.

## High Speed Transfer via USB 2.0

- Maximum transfer speed of 480 Mbps.

## High-Fidelity Sound

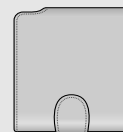
- The player has a built-in equalizer to adjust sound to your preference.

## Built-in Rechargeable Lithium Battery

- The player contains a rechargeable lithium battery that can play music files up to 12 hours and video files up to 3 hours.



Portable Media Center  
AH81-01686A



Carrying Case  
AH81-01624A



Earphones  
AH30-00063B



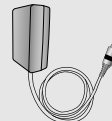
Remote Control  
AH81-01623A



USB Cable  
AH81-01626A



A/V cable  
(video/audio)  
AH81-01627A



Charger  
AH81-01625A



User Manual  
AH68-01636B

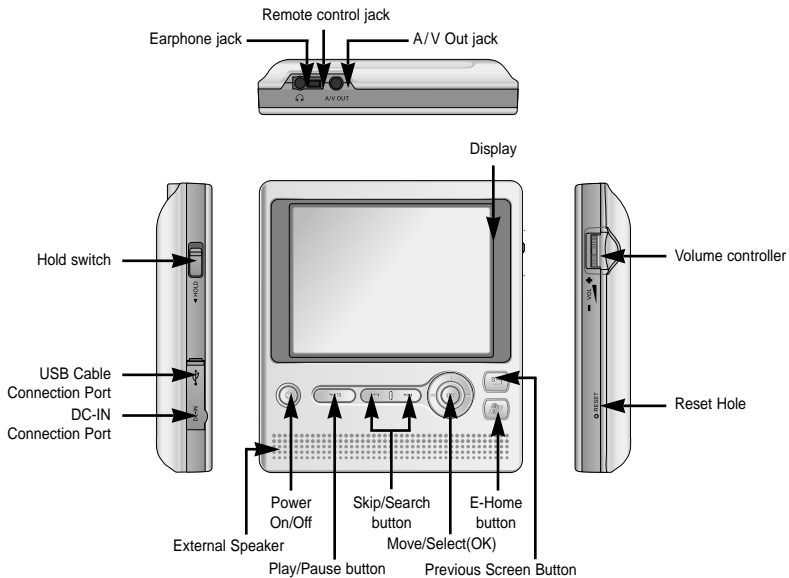


Installation CD  
AH81-01628A

Model	YH-999
Built-in memory	20GB

- The appearance of the accessories shown is subject to change for product improvement without prior notice.
- The capacity of the useable built-in memory is less than indicated as the internal firmware uses a part of the memory as well.

# Location of Controls

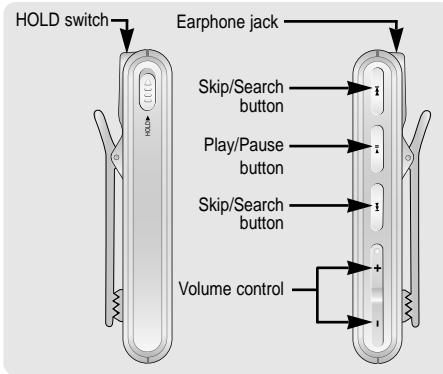


## Note

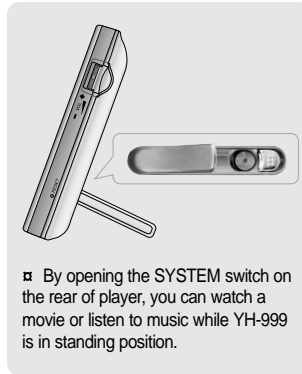
- Reset the player by pressing the RESET hole using a pointed object such as a safety clip.

# Location of Controls

## Remote Control

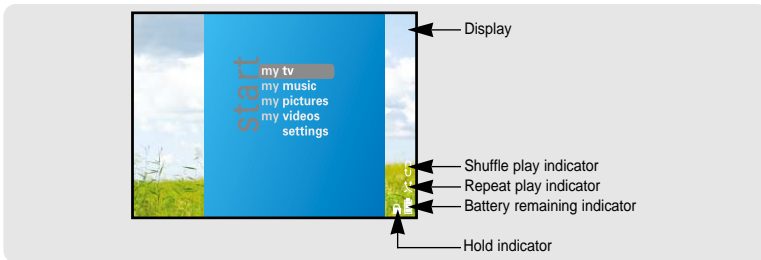


## Standing Position



ENG

## Display



## System Requirements.

The PC system must meet the following specifications:

- Pentium 300MHz or greater
- Windows XP series
- 64MB of available hard disk space
- CD-ROM drive (double speed or greater)
- USB port (2.0) supported
- Windows Media Player 10 series

## Note

- Make sure to install it in the Administrator account. Installation will not proceed if you are not in the Administrator account.
- Make sure you have the latest driver updates from Microsoft to ensure proper operation of this product. Click on the Start button in the lower left corner of your PC screen, then click on "Windows Update". You will be directed to Microsoft's Windows Update webpage.

Make sure to install Windows Media Player10 before connecting the player and PC.

If 'Add New Hardware Wizard' appears, press the [Cancel] button and install the Windows Media Player10.

## Installing software

- 1 Insert the Installation CD into the CD-ROM drive. The following picture appears. Click [Next].

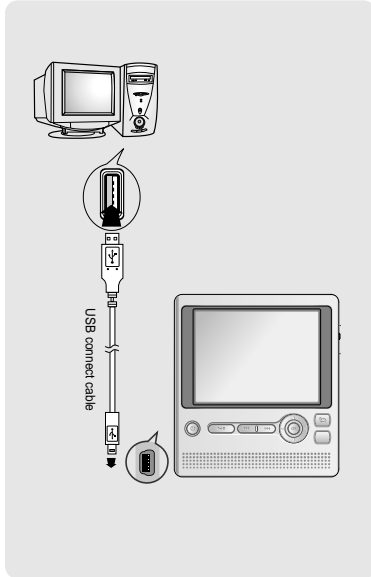


## 2 Follow the instructions in the window to complete the installation.





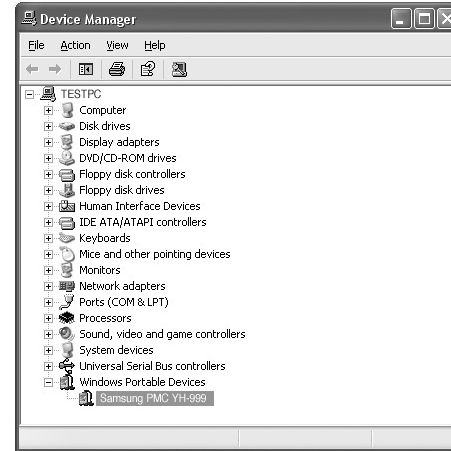
- 1 Connect a USB cable to the USB port on the computer.
  - 2 Connect the other end of a USB cable to the USB cable connection port on the side of the player.
    - [MTP media player] window will appear with "Searching New Hardware" message.
- Go to the device manager to check that installation has been successfully completed.



## How to check USB driver

Windows XP:

**Control Panel → System → Hardware → Device Manager → Samsung PMC YH-999**



- You can download several types of files using Windows Media Player 10.

1 Video file: WMV, ASF formats



**Note**

- If the video file is not in WMV or ASF format, it is automatically converted to WMV format during downloading. (Convertible file format: AVI, MPEG, MPE, MPG, AU, SND)

2 Audio file: MP3, WMA formats

3 Image file: JPEG format

The file, downloaded from WMP10 to the player, will be automatically saved in Music, Pictures or Videos format depending on file folder.

## Downloading Files

1 Connect the player to PC.

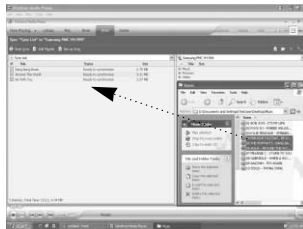
2 Run the Windows Media Player10.

- Select [Start] → [Programs] → [Accessories] → [Entertainment] → [Windows Media Player10] in the desktop.

3 Select [Sync].



4 When the [Sync] window appears, select the file you want to transfer to the player, drag and drop it to the left [Sync List] window.



5 Press the [Start Sync] button on the main screen.



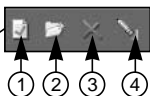
6 You can check the transferred file in the right window.



**Note**

- It may take longer to download large video files.
- DivX files can only be downloaded through Windows Media Player 10 on a PC with DivX codec installed.

## Using Other Functions



- ① [Display properties and settings] button
- ② [Create folder] button
- ③ [Delete from device] button
- ④ [Format storage media] button

## Viewing Properties

Press the [Display Properties and Settings] button.

- You can check the properties of YH-999.

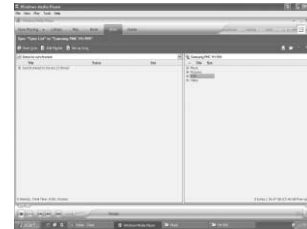


## Creating Folder

1 Press the [Create Folder] button.

2 When the [New Folder] window appears, enter the folder name and then press the [OK] button.

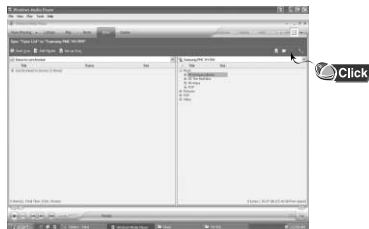
- A new folder is displayed in the right window of the main screen.



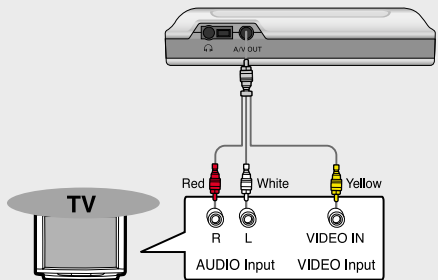
## Deleting File and Folder

Select the file or folder to delete, and then press the [Delete from Device] button.

- Selected file or folder will be deleted.







- 1 Use the A/V cable to connect A/V OUT jack of the player to the Audio/Video Input jack of a TV.
- 2 Select the External Input in TV menu.
- 3 Move to [Settings] → [Display] → [TV Out] in the menu screen of the main unit, and then select relevant TV format, NTSC or PAL, then press OK on the Main unit.
  - Countries where NTSC is in use: USA, South Korea, Japan, Taiwan, Philippines, Chile and Mexico, etc.
  - Countries where PAL is in use: European countries, Hong Kong, North Korea, China, India, Indonesia, Singapore, Malaysia, Turkey, Brazil and Argentina, etc.

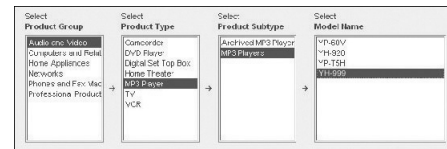


### Note

- When you connect to a TV, the screen is no longer viewable on the main unit.
- To return the display to the main unit's screen, disconnect the A/V cable or power off the unit, then turn it back on.

To update to the latest firmware:

- Move to [Start]→[All Programs]→[Portable Media Center] on the desktop and click [Firmware Update].
- Firmware Update guides you to the web site to download the firmware and recovery utilities. After accessing to the web site, select Audio and Video/MP3 Player/MP3 Players/YH-999.



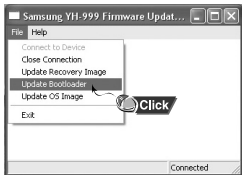
Select Firmware tab and download zip file [Latest Firmware & Recovery Utilities] under the directory C:\Program Files\Portable Media Center.

- 1 Connect the player to your PC.
- 2 Run the “Samsung PMC YH-999 Firmware update Tool.exe” in the downloaded [Latest Firmware Utility & Upgrade Utility] folder.
- 3 When a firmware update window appears, press the [File] button and then select [Connect to Device].
- 4 When a device selection window appears, select the [Samsung PMC YH-999] and then press the [OK] button.



# Updating Firmware

- 5 Select [Update Bootloader] after pressing the [File] button.

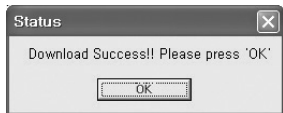


- 7 Select [Update OS Image] after pressing the [File] button.

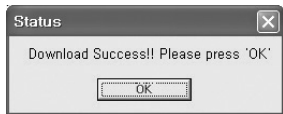


- Firmware update is completed.
- When you close the firmware update window, the player will be automatically restarted.

- 6 When a file search window appears, select the "EBOOT\_FACTORY.bin" file in the [Latest Firmware Utility & Upgrade Utility] folder and then press the [Open] button. A window will open saying "Download Success", and then press the [OK] button



- 8 When a file search window appears, select the "NK.bin" file in the [Latest Firmware Utility & Upgrade Utility] folder, and then press the [Open] button. A window will open saying "Download Success", and then press the [OK] button

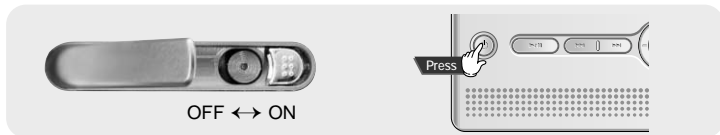


# Turning unit On/Off and using the HOLD Function

Make sure to check whether the unit is fully charged before turning it on.

## Turning On/Off

- 1 Push the SYSTEM ON/OFF switch to ON position at the rear of the main unit. Press the Power button on the main unit.
- 2 To turn off the unit, press the Power button on the main unit again. If you don't use the main unit for long period of time, push the SYSTEM ON/OFF switch to OFF position.



## Adjusting Volume


- Use the Volume Control on the side of the main unit to adjust the volume.
- Volume can be adjusted from 0 to 20.

## HOLD Function

Use the Hold feature to lock and disable all buttons. The Hold feature is useful to prevent your player from being accidentally turned off or on, or to ensure uninterrupted playback.


### Hold Function of the Main Unit

Activate  on the main unit.



- All buttons on the main unit will be disabled, and only the buttons on the remote control can be used for input.
- When you activate the HOLD switch, a "  " appears on the display.

### Hold Function of the Remote Control

Activate  on the remote control.

- All buttons on the remote control will be disabled, and only the buttons on the main unit can be used for input.
- When you activate the HOLD switch, a "  " appears on the display.


## I Selecting My TV

Press the  button up or down to select [my tv] in the menu screen and then press the  button.

- In [my tv], you can play back recorded TV files created in "Media Center Edition" of Windows XP series. If you record a TV program using Media Center Program, it will be saved with dvr-ms as an extension. When you download this file using WMP10, it will automatically be saved in the My TV Folder so that you can watch it in the Player.  
(For more details on Media Center Program, refer to the manual supplied with Media Center Edition )





## I Playing the file

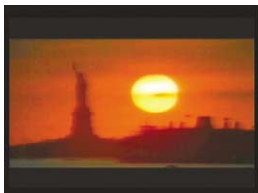
I Press the  button left or right to select the desired category, then press up or down to select the desired file.

### Category



- new : Newly downloaded file will appear for 2 weeks.
- sort by date : Saved files will appear in the order of date.
- sort by name : Saved files will appear in the alphabetical order.

2 Press the  button or .

- Selected files will be played back.
- You can move backward or forward fast using the  button during playback.
- If you press the  button, it will return to the previous screen.




## I Selecting My Music

Press the  button up or down to select [my music] in the menu screen and then press the  button.

- You can play back MP3 & WMA music files in [my music].


## I Playing the File

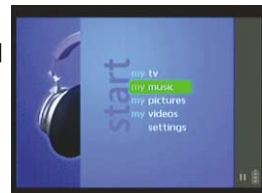
I Press the  button left or right to select the desired category, then press up or down to select the desired file.


### Category

- new : Newly downloaded file will appear for 2 weeks.
- albums : Saved album will appear. When you select the album, files in the album will appear.
- artists : Files will appear by artist.
- playlists : Files saved in the playlist will appear.
- songs : Saved files will appear in alphabetical order.
- genres : Music genre will appear. If you select the genre, the files in each genre will appear.

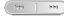


### Note

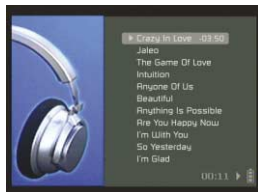
- If you select [play all] which is displayed in upper part of each search screen, all files in new, albums, artists, playlists, songs and genres will be played back.
- When several music files are played back, pressing the  button moves to the previous/next file.
- Newly downloaded files will appear in the "new" section as well as in your library.




2 Press the  button.


3 Select [play].

- Selected file will be played back.
- If you press and hold the  button during playback, you can move backward or forward quickly.
- If you press the  button right and left, you can select various kinds of playback screens.
- If you press the  button, it will return the previous screen.



## Setting the Playback Mode and EQ

1 While music file is played back, press the  button right and left to move to playback mode and EQ setting screen.

2 Press the  button to select the mode you want.

- shuffle play : You can randomly repeat and listen to several music files
- repeat play : You can play back files repeatedly.
- equalizer : You can set the desired EQ mode.  
acoustic → classical → electronic → hip hop → jazz → pop → rock
- purchase : If you select the [Purchase] box, you can purchase a sample file being played while connected to WMP 10 and the Internet.



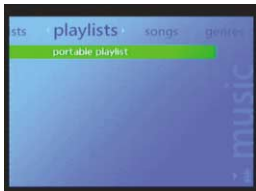


## I Playlist Setting

1 Move to the music file or folder you want to add to the playlist (refer to page 28 to select desired file or folder), and then press the **OK** button.

2 Select [add to portable playlist] if you moved to the file, and select [add all to portable playlist] if you moved to the folder, and then press the [OK] button.

- Selected file or folder will be added to the playlist.



## I Playing the Playlist

1 Select [playlists].

2 Press the **OK** button in [portable playlist].

- play all** : All files saved in the playlist will be played back.
- remove all from playlist** : All files saved in the playlist will be deleted.
- To play back one music file, move to the relevant file and press the **OK** button to select [play].

## I Selecting My Pictures

Press the **OK** button up or down to select [my pictures] in the menu screen and then press the **OK** button.

- You can view image files in JPEG format in [my pictures].

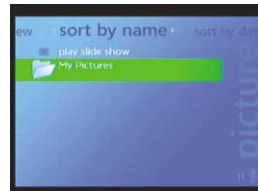


## I Viewing Image File

Select [My Pictures] folder in the search screen and then Press the **OK** button up or down to move to the file you want to view. If you press **OK** button, you can view the selected images.

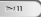
### Category

- new** : Newly downloaded file will appear for 2 weeks.
- sort by name** : Saved files will appear in alphabetical order.
- sort by date** : Saved files will appear in the order of date.




## Viewing Slide Show

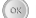
In the search screen or [My Pictures] folder selection screen, select [play slide show].

- Slide show will start.
- If you press the  button during slide show, the slide show will be paused.

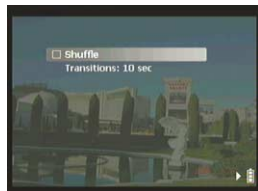


## Setting Slide Show


1 Press the  button right or left twice to move to the Slide Show Setting Screen.

2 Press the  button to set the slide show as you want.

- Shuffle : Image files will appear in random order.
- Transitions : You can set the time to move to the next image file.  
5 sec → 7 sec → 10 sec → 15 sec → 30 sec
- Show music : When you are watching the slide show pressing this returns to Music mode.

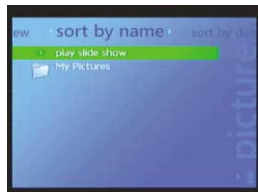


## Playing Music during Slide Show



1 Press the  button during music playback. (For more information on music playback, refer to Playing the File in "my music".)

2 When menu screen appears, move to [my pictures] and select [play slide show].

- You can enjoy slide show and music at the same time.




## Selecting My Videos

Press the  button up or down to select [my videos] in the menu screen and then press the  button.

- You can play back video files in WMV format in [my videos].





## Playing the File

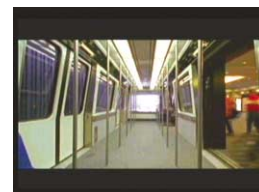
1 Press the  button left or right to select the desired category, then press up or down to select the desired file.

### Category

- new : Newly downloaded file will appear for 2 weeks.
- sort by name : Saved files will appear in alphabetical order.
- sort by date : Saved files will appear in the order of date.



2 Press the  button or .

- The selected file will be played back.
- You can move backward or forward fast using the  button during playback.
- If you press the  button, it will return to the previous screen.



Select Settings in the menu screen.

1 Select Equalizer in Settings.

2 Press the  button up or down to move to the sound mode you want to change, and then press the  button.



- If you press the  button, it will move to the previous screen.



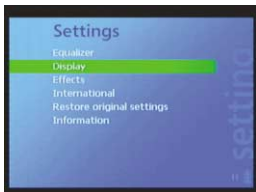
## Setting the Display

Select Settings in the menu screen.



1 Select Display in Settings.

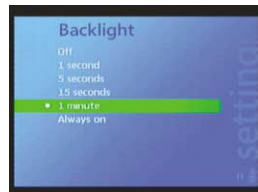
2 Press the  button up or down to move to the function you want to change, and then press the  button.

- If you press the  button, it will return the previous screen.





## Backlight

- Press the  button up or down to set the Light On Time of the screen, and then press the  button.
- You can set the Light On Time from 0 to 60 seconds.
- Light is continuously on if you set it to Always on.





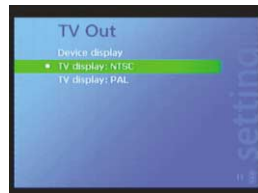
## Brightness

- Press the  button up or down to set the screen brightness, and then press the  button.
- You can set the screen brightness from 1 to 5.



## TV Out



- Press the  button up or down to set the display, and then press the  button.
- Device display :  
You can view the screen through the main unit.
- TV display(NTSC) :  
You can view the screen through TV in NTSC format.
- TV display(PAL):  
You can view the screen through TV in PAL format.



# Setting the Screen/Sound Effect

Select Settings in the menu screen.



## 1 Select Effects in Settings.

2 Press the  button up or down to move to the effect you want to change, then press the  button.

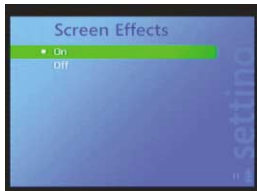
- If you press the  button, it will return to the previous screen.




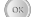
## Screen effects

● Press the  button up or down to set the Screen effects On or Off, and then press the  button.

- On: The characters appearing in the screen while screen moves will become larger and smaller.
- Off: The characters in the screen are fixed.



## Sounds

● Press the  button up or down to set Sounds On or Off, and then press the  button.



- On: Each time you press the button, there will be a beep sound.
- Off: There will not be a beep sound even if you press the button.



# Setting the Regional Additional Function

Select Settings in the menu screen.



## 1 Select International in Settings.

2 Press the  button up or down to move to the function you want to change and then press the  button.

- If you press the  button, it will return to the previous screen.



## Language



● Press the  button up or down to select the language you want among 7 languages, and then press the  button

- The selected language will appear in the screen.

日本語 → 한국어 → Deutsch → English →  
Español → Français → Italiano



## Standards

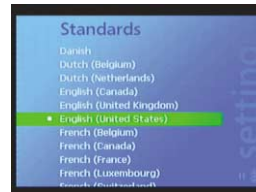
● Press the  button up or down to select the language and country suitable for your area, and then press the  button

- Year/Month/Date will appear in the order suitable for the country you're in.



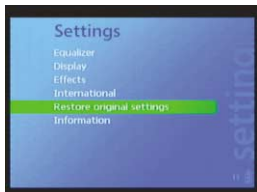
### Note


- The unit will automatically restart when Language or Standards are changed.



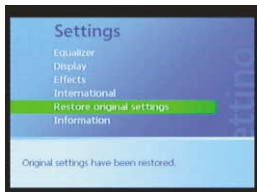
Select Settings in the menu screen.

1 Select Restore original settings in Settings.



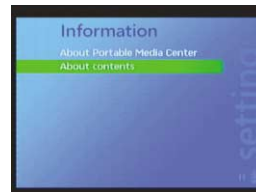
2 When the following confirmation message appears, select [yes] and then press the  button.



- All settings will be initialized.



Select Settings in the menu screen.

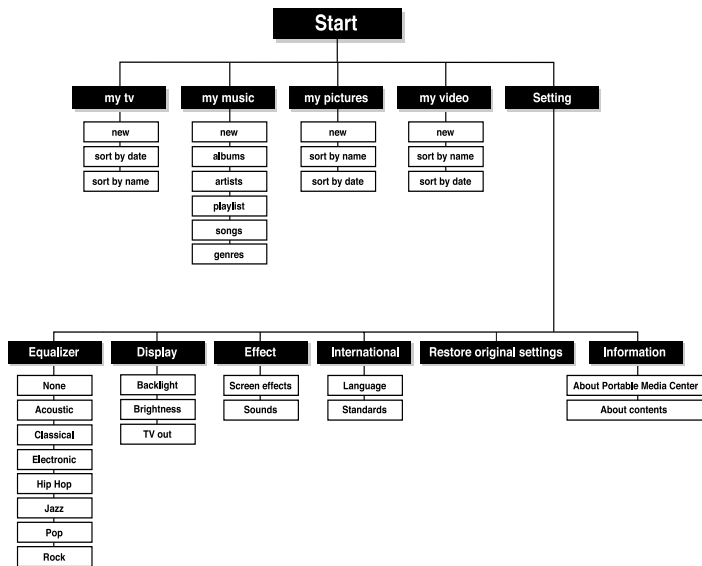
1 Select Information in Settings.



2 Press the  button up or down to move to the player information you want to check and then press the  button.

- About Portable Media Center :  
You can check the player name and software version.
- About contents :  
You can check the number of files saved in the player, as well as the amount of memory used and available.





How to recover when HDD is damaged due to external impact or other effect.

To download Recovery Utility :

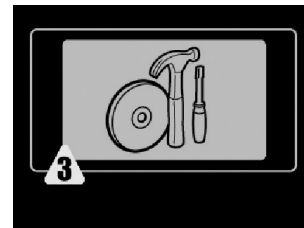
Move to [Start] → [All Programs] → [Portable Media Center] on your PC and click [Firmware Update].

Firmware Update guides you the web site to download the firmware and recovery utilities. After accessing to the web site, select Audio and Video/MP3 Player/MP3 Players/YH-999, then choose Firmware tab to download zip file [Latest Firmware & Recovery Utilities] under the directory C:\Program Files\Portable Media Center. (See Page 25 for details)

❑ **If the display shows the recovery mode no. 3 image:**

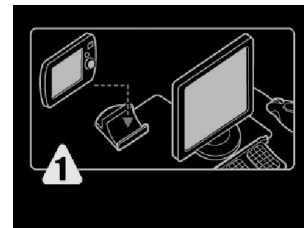
The system area is damaged due to external impact or other effect.

1. While this image is displayed, the player automatically recovers the system area and is restarted after recovery.



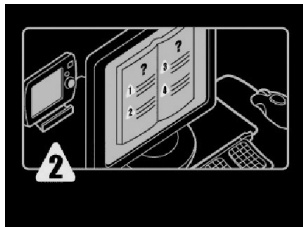
2. Recovery mode no. 1 is displayed after restarting.

Instructs the user to connect the unit to the computer and recover the HDD with the recovery program.



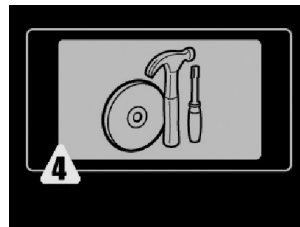
## How to recover the Hard Disk Drive (HDD)

3. When connected to computer, the display changes to recovery mode no. 2.  
Run "Samsung PMC YH-999 Recovery Tool(update).exe" in the downloaded [Recovery Utility] folder, and select [File] → [Connect to Device] → [Samsung PMC YH-999].
  - i) Select [File] → [Update OS Image] → NK.bin in the [Recovery Utility] folder and select [Open]. Select [OK] when update is completed.
  - ii) Select [File] → [Update fonts] → gulim.ttc [Recovery Utility] folder and select [Open]. Select [OK] when update is completed.
  - iii) Select [File] → [Update fonts] → msgothic.ttc in the [Recovery Utility] folder and select [Open]. Select [OK] when update is completed.  
When update is completed, close the program and disconnect the player from the computer. When the player is restarted, it is successfully recovered.

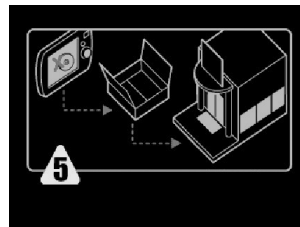


## How to recover the Hard Disk Drive (HDD)

- ❑ **If the display shows recovery mode no. 4 image:**  
The data area is damaged. While this image is displayed, the player automatically recovers the data area and is restarted after recovery.



- ❑ **If the display shows recovery mode no. 5 image:**  
The player cannot be recovered by the user and should be sent to the Samsung service center for repairs.  
Call 1-800-SAMSUNG for instructions.



**Windows Media Player 10 does not work.**

- Refer to System Requirements on page 14.

**The player does not operate and nothing is played in the screen display window.**

- Check whether SYSTEM ON/OFF switch on the rear of the main unit is set to OFF.
- Reset the player.
- Connect the charger to charge the rechargeable battery.

**There is no sound even if I press the Play Back button in music mode.**

- Check whether MP3, WMA files are saved in the main unit.

**I cannot download the file.**

- Check whether Windows Media Player 10 is properly installed in the computer.
- Check the USB connection between the computer and the main unit.
- Check whether the memory is full.

**It takes too long to search the music files.**

- It may take for a while if too many music files are saved in the main unit.

**Music file or artist names are not displayed during playback.**

- Check the ID3 Tag of the music file.
- Change the language setting.

**When it is connected to a TV, the screen will not appear.**

- If you want to see the main screen, disconnect the A/V cable.

Model	YH-999
Built-in Memory capacity	20GB
Voltage	3.7V (Li-ion battery)
Playing time	Video : 3hours / Audio : 12 hours
Dimensions/Weight	3.82" X 4.21" X 0.81" / 8.15oz
Case	Plastic/Aluminum
Noise Ratio	85dB with 20KHz LPF
Earphones Jack Output Power	35mW/CH (16Ω)
Output Frequency Range	20Hz~20KHz
Operating Temperature Range	-5 ~ +35°C(23~95°F)
File Support	AUDIO : MPEG1/2/2.5 Layer3(8Kbps ~ 320Kbps, 8KHz ~ 48KHz) WMA (8Kbps ~ 192Kbps, 8KHz ~ 48KHz) VIDEO : WMV 7/8/9



## FCC

This device complies with part 15 of the FCC Rules. Operation is subject to the following two conditions: (1) This device may not cause harmful interference, and (2) this device must accept any interference received, including interference that may cause undesired operation.

Caution: Any changes or modifications in construction of this device which are not expressly approved by the party responsible for compliance could void the user's authority to operate the equipment

Note: This equipment has been tested and found to comply with the limits for a Class B digital device, pursuant to part 15 of the FCC Rules. These limits are designed to provide reasonable protection against harmful interference in a residential installation. This equipment generates, uses and can radiate radio frequency energy and, if not installed and used in accordance with the instructions, may cause harmful interference to radio communications. However, there is no guarantee that interference will not occur in a particular installation.

If this equipment does cause harmful interference to radio or television reception, which can be determined by turning the equipment off and on, the user is encouraged to try to correct the interference by one or more of the following measures:

- Reorient or relocate the receiving antenna.
- Increase the separation between the equipment and receiver.
- Connect the equipment to an outlet on a circuit different from that to which the receiver is connected.
- Consult the dealer or an experienced radio/TV technician for help.

## Modifications

Any changes or modifications not expressly approved by the grantee of this device could void the user's authority to operate the device.

## Compliance

This product conforms to the following Council Directive:

- Directive 89/336/EEC, 92/31/EEC(EMC)

## Declaration of Conformity

Name: Samsung Electronics Co., Ltd  
 Address: 416, Maetan-3Dong, Paldal-Gu, Suwon City, Kyungki-Do, Korea 442-742  
 declares under its sole responsibility that the product  
 Trade Name: Samsung Electronics Co., Ltd  
 Model Number: YH-999  
 has been tested according to the FCC/CISPR22/95 requirements for Class B devices and found compliant with the following standards

EMI/EMC: AnSI C63.4 1992, FCC Part 15 Subpart B  
 This device complies with part 15 of the FCC Rules. Operation is subject to the following two conditions:

1. This device may not cause harmful interference, and
2. This device must accept any interference received, including interference that may cause undesirable operation.

Party Responsible for Product Compliance

Samsung Electronics America  
 QA Lab.  
 3351 Michelson Dr. Suite #290  
 Irvine, CA92612

**Samsung warrants this product as free of defects in material, design and workmanship for a period of twelve(12) months from the original date of purchase.**

If during the period of warranty this product proves defective under normal use and service, you should return the product to the retailer from whom it was originally purchased. The liability of Samsung and its appointed maintenance company is limited to the cost of repair and/or replacement of the unit under warranty. Return of the product for defective reasons should be to the original purchaser; however, Samsung Authorized Dealers and Authorized Service Centers will comply with the warranty on the terms issued to purchasers in the country concerned. For further information relating to the Authorized Service Centers contact; 1-800-SAMSUNG (1-800-726-7864) [www.samsungyepp.com](http://www.samsungyepp.com)

## WARRANTY CONDITIONS:

1. The warranty is only valid when the warranty card is properly completed, and upon presentation of the proof of purchase consisting of original invoice or sales slip confirmation, indicating the date of purchase, dealer's name, model, serial No. and product number. Samsung reserves the right to refuse warranty service if this information has been removed or changed after the original purchase of the product from the dealer.
2. Samsung's obligations are to the repair of the defective part, and at its discretion, replacement of the product (service exchange unit).
3. Warranty repairs must be carried out by an Authorized Samsung Dealer/Service Center. No reimbursement will be made for repairs carried out by non Samsung Centers, and warranty coverage will not be valid for any repairs or damage caused by such repairs.
4. Repair or replacement under the terms of this warranty does not give right to extension to or a new starting of the period of warranty. Repair or direct replacement under the terms of this warranty may be fulfilled with functionally equivalent service exchange units.

5. The warranty is not applicable in cases other than defects in material, design and workmanship. The warranty does not cover the following:

- ◆ Periodic checks, maintenance, repair and replacement of parts due to normal wear and tear.
- ◆ Abuse or misuse, including but not solely limited to the failure to use this product for its normal purposed or in accordance with Samsung's instructions usage and maintenance.
- ◆ Use of the product in conjunction with accessories not approved by Samsung for use with this product.
- ◆ Failure of the product arising from incorrect installation or use not consistent with technical or safety standards in current force, or failure to comply with product manual instructions.
- ◆ Accidents, Acts of God or any cause beyond the control of Samsung caused by lightning, water, fire, public disturbances and improper ventilation.

- ◆ Unauthorized modifications carried out for the product to comply with local or national technical standards in countries for which the Samsung product was not originally designed.
- ◆ Repairs performed by non-authorized service centers such as opening of the product by a non-authorized person.
- ◆ The model, serial No. and product number on the product has been altered, deleted, removed or made illegible.
- 6. This warranty does not affect the consumer's statutory rights nor the consumers rights against the dealer from their purchase/sales agreement.

THERE ARE NO EXPRESS WARRANTIES OTHER THAN THOSE LISTED AND DESCRIBED ABOVE, AND NO WARRANTIES WHETHER EXPRESS OR IMPLIED, INCLUDING, BUT NOT LIMITED TO, ANY IMPLIED WARRANTIES OF MERCHANTABILITY OR FITNESS FOR A PARTICULAR PURPOSE, SHALL APPLY AFTER THE EXPRESS WARRANTY PERIODS STATED ABOVE, AND NO OTHER EXPRESS WARRANTY OR GUARANTY GIVEN BY ANY PERSON, FIRM OR CORPORATION WITH RESPECT TO THIS PRODUCT SHALL BE BINDING ON SAMSUNG, SAMSUNG SHALL NOT BE LIABLE FOR LOSS OF REVENUE OR PROFITS, FAILURE TO REALIZE SAVINGS OR OTHER BENEFITS, OR ANY OTHER SPECIAL, INCIDENTAL OR CONSEQUENTIAL DAMAGES CAUSED BY THE USE, MISUSE OR INABILITY TO USE THIS PRODUCT, REGARDLESS OF THE LEGAL THEORY ON WHICH THE CLAIM IS BASED, AND EVEN IF SAMSUNG HAS BEEN ADVISED OF THE POSSIBILITY OF SUCH DAMAGES. NOR SHALL RECOVERY OF ANY KIND AGAINST SAMSUNG BE GREATER IN AMOUNT THAN THE PURCHASE PRICE OF THE PRODUCT SOLD BY SAMSUNG AND CAUSING THE ALLEGED DAMAGE. WITHOUT LIMITING THE FOREGOING, PURCHASER

- ASSUMES ALL RISK AND LIABILITY FOR LOSS, DAMAGE OR INJURY TO PURCHASER AND PURCHASER'S PROPERTY AND TO OTHERS AND THEIR PROPERTY ARISING OUT OF THE USE, MISUSE OR INABILITY TO USE THIS PRODUCT SOLD BY SAMSUNG NOT CAUSED DIRECTLY BY THE NEGLIGENCE OF SAMSUNG. THIS LIMITED WARRANTY SHALL NOT EXTEND TO ANYONE OTHER THAN THE ORIGINAL PURCHASER OF THIS PRODUCT, IS NONTRANSFERABLE AND STATES YOUR EXCLUSIVE REMEDY.

- Some states do not allow limitations on how long an implied warranty lasts, or the exclusion or limitation of incidental or consequential damages, so the above limitations or exclusions may not apply to you. This warranty gives you specific legal rights, and you may also have other rights which vary from state to state.
- This product is for personal use only, and is only for use in compliance with the limitations of copyright and other laws.

To obtain warranty service, please contact SAMSUNG at:  
Samsung Electronics America, Inc.  
400 Valley Road, Suite 201 Mount Arlington, NJ 07856  
Tel: (973) 601-6000, Fax: (973) 601-6001  
1-800-SAMSUNG (1-800-726-7864)  
[www.samsung.com](http://www.samsung.com) / [www.napster.com](http://www.napster.com)  
081299

