

**SONY**

4-400-214-81(1)

# Personal Audio Docking System

Operating Instructions GB

Bluetooth®

Available on the App Store

Made for iPod iPhone iPad

©2012 Sony Corporation Printed in China

http://www.sony.net/

RDP-X200iP

## WARNING

**To reduce the risk of fire or electric shock, do not expose this apparatus to rain or moisture.**

To reduce the risk of fire, do not cover the ventilation of the apparatus with newspapers, tablecloths, curtains, etc. And do not place lighted candles on the apparatus.

To reduce the risk of fire or electric shock, do not expose this apparatus to dripping or splashing, and do not place objects filled with liquids, such as vases, on the apparatus.

Do not install the appliance in a confined space, such as a bookcase or built-in cabinet.

Do not expose the batteries (battery pack or batteries installed) to excessive heat such as sunshine, fire or the like for a long time.

As the main plug is used to disconnect the unit from the mains, connect the unit to an easily accessible AC outlet. Should you notice an abnormality in the unit, disconnect the main plug from the AC outlet immediately.

The unit is not disconnected from the AC power source (mains) as long as it is connected to the wall outlet, even if the unit itself has been turned off.

The nameplate and important information concerning safety are located on the bottom exterior of the main unit and on the surface of the AC adaptor.

### CAUTION

Danger of explosion if battery is incorrectly replaced. Replace only with the same type.

**Notice for customers: the following information is only applicable to equipment sold in countries applying EU directives**

The manufacturer of this product is Sony Corporation, 1-7-1 Konan, Minato-ku, Tokyo, 108-0075 Japan. The Authorized Representative for EMC and product safety is Sony Deutschland GmbH, Hedelfinger Strasse 61, 70327 Stuttgart, Germany. For any service or guarantee matters, please refer to the addresses given in separate service or guarantee documents.

CE

Hereby, Sony Corp., declares that this equipment is in compliance with the essential requirements and other relevant provisions of Directive 1999/5/EC. For details, please access the following URL: http://www.compliance.sony.de/

**Disposal of Old Electrical & Electronic Equipment (Applicable in the European Union and other European countries with separate collection systems)**

This symbol on the product or on its packaging indicates that this product shall not be treated as household waste. Instead it shall be handed over to the applicable collection point for the recycling of electrical and electronic equipment. By ensuring this product is disposed of correctly, you will help prevent potential negative consequences for the environment and human health, which could otherwise be caused by inappropriate waste handling of this product. The recycling of materials will help to conserve natural resources. For more detailed information about recycling of this product, please contact your local Civic Office, your household waste disposal service or the shop where you purchased the product. Applicable accessory: Remote control.

**Disposal of waste batteries (applicable in the European Union and other European countries with separate collection systems)**

This symbol on the battery or on the packaging indicates that the battery provided with this product shall not be treated as household waste.

On certain batteries this symbol might be used in combination with a chemical symbol. The chemical symbols for mercury (Hg) or lead (Pb) are added if the battery contains more than 0.0005% mercury or 0.004% lead.

By ensuring these batteries are disposed of correctly, you will help prevent potentially negative consequences for the environment and human health which could otherwise be caused by inappropriate waste handling of the battery. The recycling of the materials will help to conserve natural resources.

In case of products that for safety, performance or data integrity reasons require a permanent connection with an incorporated battery, this battery should be replaced by qualified service staff only.

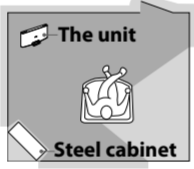
To ensure that the battery will be treated properly, hand over the product at end-of-life to the applicable collection point for the recycling of electrical and electronic equipment.

For all other batteries, please view the section on how to remove the battery from the product safely. Hand the battery over to the applicable collection point for the recycling of waste batteries.

For more detailed information about recycling of this product or battery, please contact your local Civic Office, your household waste disposal service or the shop where you purchased the product.

### On Bluetooth communication

- Bluetooth wireless technology operates within a range of about 10 meters. Maximum communication range may vary depending on obstacles (human body, metal, wall, etc.) or electromagnetic environment.



- The following conditions may affect the sensitivity of Bluetooth communication.
  - There is an obstacle such as a person, metal, or wall between this unit and iPod.
  - A device using 2.4 GHz frequency, such as a wireless LAN device, cordless telephone, or microwave oven, is in use near the unit.
  - The unit is installed on a shelf made of steel.
- Because Bluetooth devices and wireless LAN (IEEE802.11b/g/n) use the same frequency, microwave interference may occur and resulting in communication speed deterioration, noise, or invalid connection if this unit is used near a wireless LAN device. In such a case, perform the following.
  - Use this unit at least 10 m away from any wireless LAN device.
  - If this unit is used within 10 m of a wireless LAN device, turn off the wireless LAN device.
  - Install this unit and iPod as near to each other as possible.
- Microwaves emitting from a Bluetooth device may affect the operation of electronic medical devices. Turn off this unit and iPod in the following locations, as it may cause an accident.
  - where inflammable gas is present, in a hospital, train, airplane, or a petrol station
  - near automatic doors or a fire alarm
- This unit supports security capabilities that comply with the Bluetooth standard to provide a secure connection when the Bluetooth wireless technology is used, but security may be insufficient, depending on the setting. Be careful when communicating using Bluetooth wireless technology.
- We do not take any responsibility for leakage of information during Bluetooth communication.
- Connection with all Bluetooth devices cannot be guaranteed.
  - A device featuring Bluetooth function is required to conform to the Bluetooth standard specified by Bluetooth SIG, Inc. and be authenticated.
  - Even if the connected device conforms to the above mentioned Bluetooth standard, some devices may not be connected or work correctly, depending on the features or specifications of the device.
- Depending on the device to be connected, it may require some time to start communication.

### Note

- In the Operating Instructions, “iPod” is used as a general reference to functions on an iPod, iPhone or iPad, unless otherwise specified by the text or illustrations.

If you have any questions or problems concerning your unit, please consult your nearest Sony dealer.

## General information

## Specifications

### iPod

DC out: 5 V  
MAX: 2.1 A

### Bluetooth

#### Output

Bluetooth Specification Power Class 2

#### Maximum communication range

Line of sight approx. 10 m<sup>\*1</sup>

#### Frequency band

2.4 GHz band (2.4000 GHz – 2.4835 GHz)

#### Communication System

Bluetooth Specification Version 2.1 + EDR (Enhanced Data Rate)

#### Compatible Bluetooth Profiles<sup>\*2</sup>

A2DP (Advanced Audio Distribution Profile)  
AVRCP<sup>\*3</sup> (Audio/Video Remote Control Profile)

#### Supported codec<sup>\*4</sup>

SBC (Subband Codec)

<sup>\*1</sup> The actual range will vary depending on factors such as obstacles between devices, magnetic fields around a microwave oven, static electricity, reception sensitivity, aerial performance, operating system, application software, etc.

<sup>\*2</sup> Bluetooth standard profiles provide the specifications for Bluetooth communication between devices.

<sup>\*3</sup> Some operations may not be available for some models of iPod.

<sup>\*4</sup> Codec: Audio signal compression and conversion format

### General

#### Speaker

Woofer: Approx. 76 mm dia. × 2  
Tweeter: Approx. 25 mm dia. × 2

#### Input

AUDIO IN jack (ø 3.5 mm stereo minijack)  
Impedance: 50 kΩ  
Average input level: 245 mV

#### Power output

20 W + 20 W (at 1% harmonic distortion)

#### Power source

Rated external power source: DC IN 20 V (with supplied AC adaptor (AC 100 V - 240 V, 50 Hz/60 Hz))

#### Dimensions

Approx. 356.0 mm × 168.1 mm × 155.8 mm (w/h/d) (incl. projecting parts and controls)

#### Mass

Approx. 2.2 kg

#### Supplied accessories

Remote control (with a lithium battery) (1)  
AC adaptor (1)  
AC power cord (1)  
Operating Instructions (this document) (1)  
Cushion for small-size iPod (1)

## Compatible iPod/iPhone/iPad models

The compatible iPod/iPhone/iPad models are as follows. Update the software of the iPod/iPhone/iPad to the latest version before using it with this unit.

### Dock Connector compatible models

iPod touch (4th generation)  
iPod touch (3rd generation)  
iPod touch (2nd generation)  
iPod nano (6th generation)\*  
iPod nano (5th generation)  
iPod nano (4th generation)  
iPod nano (3rd generation)  
iPod classic 160GB (2009)  
iPhone 4S  
iPhone 4  
iPhone 3GS  
iPhone 3G  
iPad 2  
iPad

### Wireless music streaming compatible models

iPod touch (4th generation)  
iPod touch (3rd generation)  
iPod touch (2nd generation)  
iPhone 4S  
iPhone 4  
iPhone 3GS  
iPhone 3G  
iPad 2  
iPad

\* The iPod nano (6th generation) cannot be controlled by the remote when the command of “MENU” “\*”; “\*”; and “ENTER” is pressed.

Design and specifications are subject to change without notice.

## Troubleshooting

### General

**The power does not turn on when the AC adaptor is connected.**

- Make sure the AC adaptor is connected to the wall outlet firmly.

**There is no sound.**

- Adjust **VOLUME +/-** (**VOL +/-** on the remote).
- Noise is heard.**
- Ensure that the unit is not near in-use portable phones, etc.

**The power indicator flashes.**

- The power indicator flashes when the unit receives a signal from the remote. In this case, the flashing does not mean there is an error or fault.

### When using an iPod on the Dock

**There is no sound.**

- Make sure the iPod is connected firmly.
- Make sure that the function for iPod is activated.
- Operation is not performed.**
- Make sure the iPod is connected firmly.
- Check that the iPod is compatible with this unit. (See “Dock Connector compatible models.”)
- The iPod does not charge.**
- Make sure the iPod is connected firmly.
- Make sure the AC adaptor is connected firmly.
- Check that the iPod is compatible with this unit. (See “Dock Connector compatible models.”)

### When using the Bluetooth connection

**There is no sound.**

- Ensure that this unit is not too far from the iPod, or this unit is not receiving interference from a wireless LAN, other 2.4 GHz wireless device, or microwave oven.
- Check that the Bluetooth connection is made properly between this unit and the iPod.
- Pair this unit and the iPod again.
- Keep away from metal objects or surfaces.
- Make sure that the Bluetooth function is activated.
- Sound skips or the correspondence distance is short.**
- If a device that generates electromagnetic radiation, such as a wireless LAN, other Bluetooth device(s), or a microwave oven is nearby, move away from such sources.
- Remove any obstacle between this unit and the iPod or move away from the obstacle.
- Locate this unit and the iPod as close to each other as possible.
- Re-position this unit.
- Re-position the iPod.

**Connecting cannot be done.**

- Perform pairing again. (See “To pair with an iPod.”)
- Check that the iPod is compatible with this unit. (See “Wireless music streaming compatible models.”)

**Pairing cannot be done.**

- Bring this unit and the iPod closer together.
- Delete the unit from the iPod and perform pairing again.
- Check that the iPod is compatible with this unit. (See “Wireless music streaming compatible models.”)


### Audio-in

**There is no sound.**

- Make sure the audio connecting cable is connected firmly.
- Make sure that the connected optional component is in playback mode.
- Make sure that the Audio-in function is activated.
- The sound is low.**
- Check the volume of the connected optional component.

### Remote control

**The remote does not function.**

- Replace the battery in the remote with a new one if it is weak.
- Make sure that you are pointing the remote at the remote sensor on the unit.
- Do not cover or place any objects directly in front of the  (Remote sensor) receiver.
- Remove any obstacles in the path of the remote and the unit.
- Make sure the remote sensor is not exposed to strong light such as direct sunlight or fluorescent lamp light.

If the problem persists, consult your nearest Sony dealer.

## Preparations

## Power source

### Auto power off

After playback of music (from an iPod on the Dock, Bluetooth connection, or optional component connected to the **AUDIO IN** jack) has finished, and if no operation is performed for about 20 minutes, the unit will automatically turn off.

## To use the AC adaptor

- Connect the supplied AC power cord to the AC adaptor.
- Connect the AC adaptor to the **DC IN 20V** jack on the back of this unit firmly and plug it into a wall outlet.

### Note on the AC adaptor

- Use the supplied Sony AC adaptor only. The polarity of the plugs of other manufacturers may be different. Failure to use the supplied AC adaptor may cause the unit to malfunction.

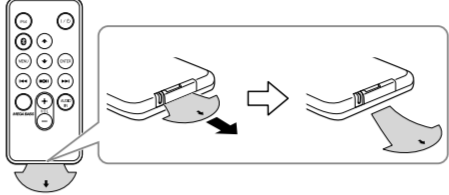


## Remote control

Before using the supplied remote for the first time, remove the insulation film.

Aim the remote at the  (Remote sensor) of the unit.

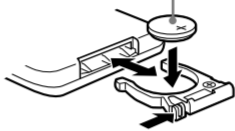
The power indicator flashes when the remote’s command is received.



### When to replace the battery

With normal use, the battery (CR2025) should last for about 6 months. When the remote can no longer operate the unit, replace the battery with a new one.

### side facing up

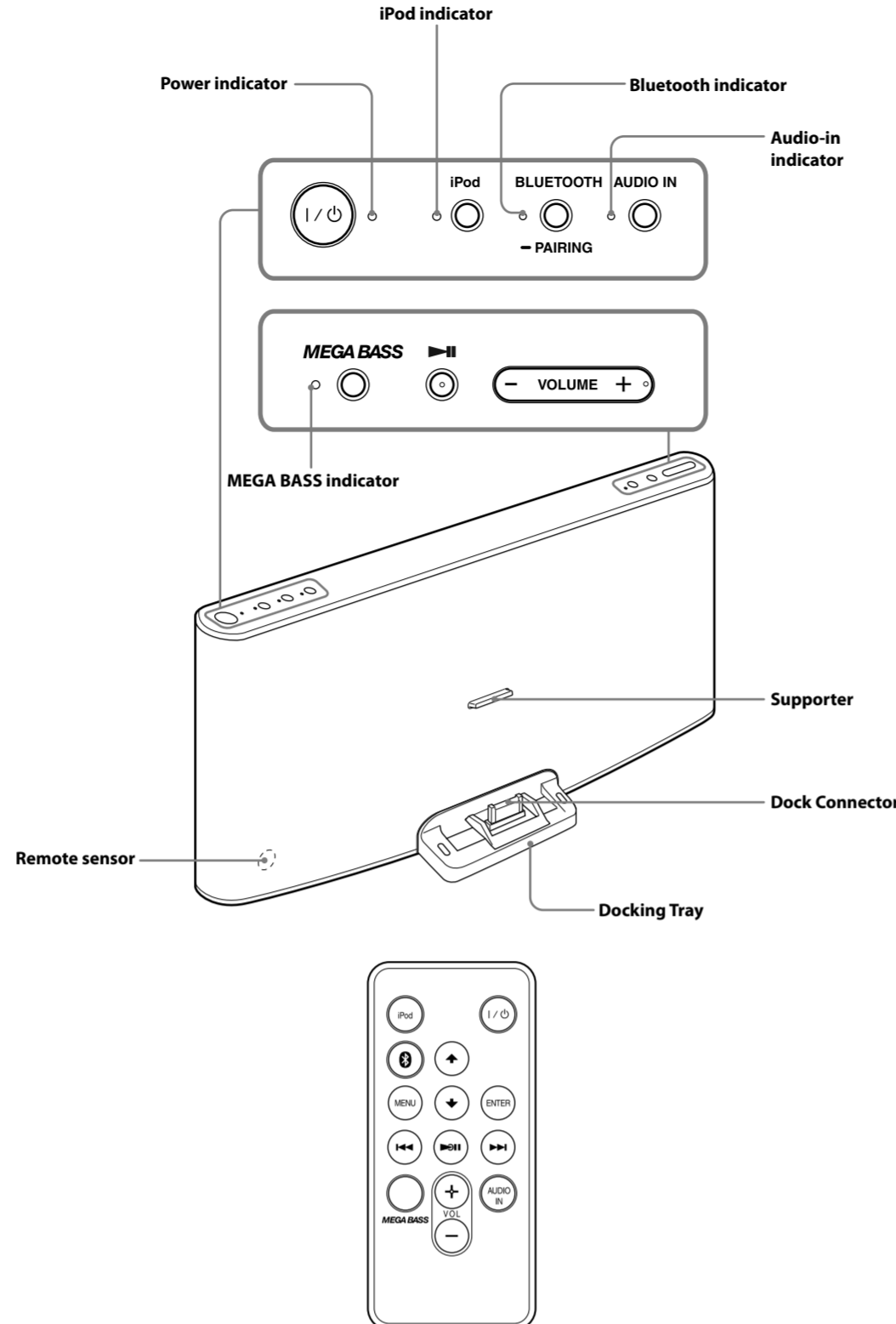
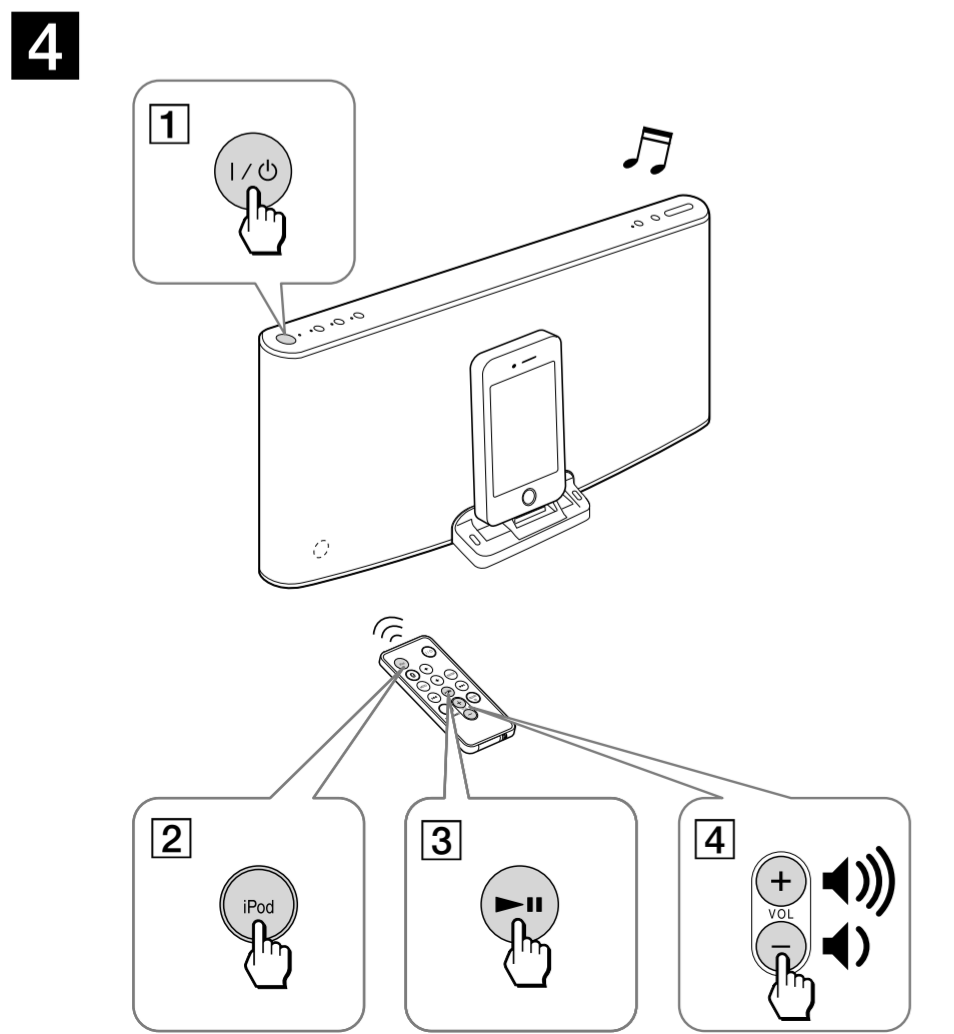
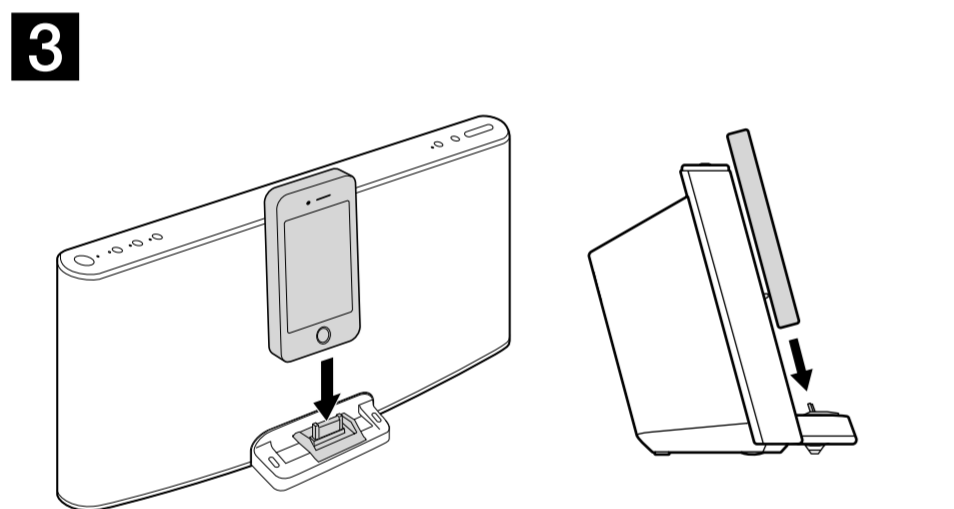
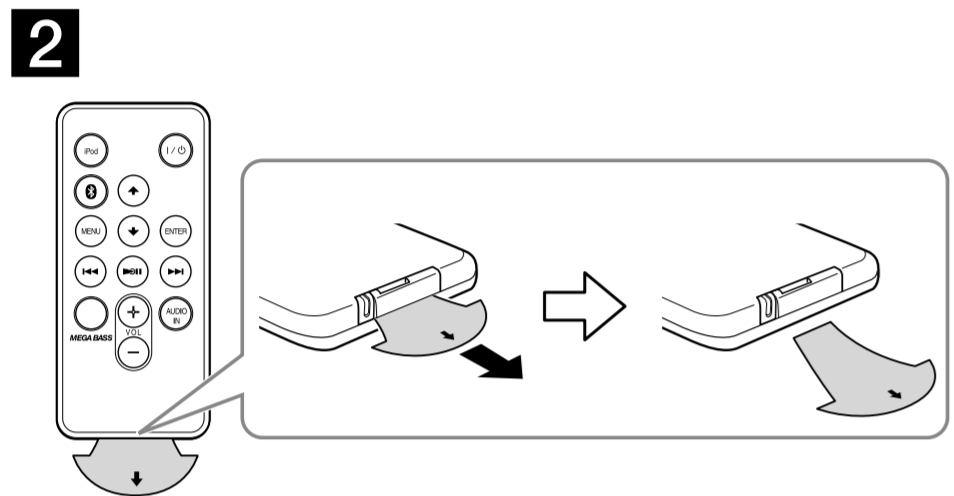
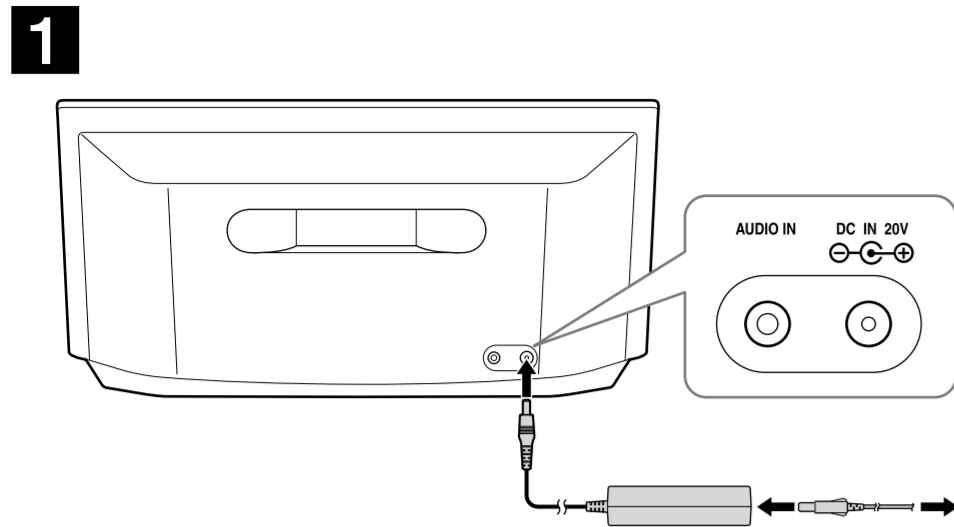


### Note

- If you are not going to use the remote for a long time, remove the battery to avoid any damage that may be caused by leakage or corrosion.

*Continued on the reverse side*

## Startup Guide

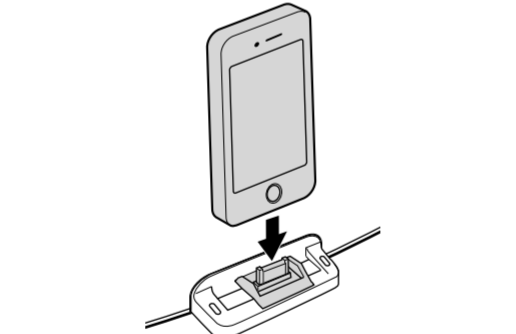


VOLUME + (VOL + on the remote control) and ►|| buttons have a tactile dot.

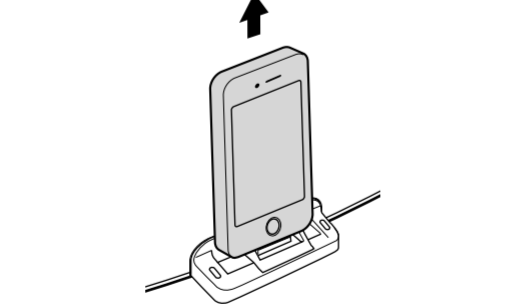
## Operations

### How to handle an iPod

#### To set an iPod



#### To remove an iPod



- Notes**
- An iPod in a case or cover can be set in this unit. However, if the case or cover interferes with the connection, remove the case or cover before setting the iPod on the Dock Connector.
  - When placing or removing the iPod, hold it at the same angle as the Dock Connector on the unit. Do not pull the iPod forward too far.
  - When placing or removing the iPod, hold the unit securely.
  - Do not twist or bend the iPod, as this may result in connector damage.
  - Remove the iPod when transporting it; otherwise, a malfunction may result.
  - If the iPod does not reach the supporter on the front of the unit, attach the supplied cushion below the supporter.

### To turn the unit on/off

Press I/⏻ (On/Standby). The power indicator lights up when the unit is turned on.

### Adjusting the volume

- Press VOLUME +/- (VOL +/- on the remote).
- Tip**
- The power indicator flashes three times in green when the sound is set to either maximum or minimum volume.

### Operating an iPod on the Dock

- Set the iPod on the Dock Connector. The Dock Connector can be tilted slightly. For details, see "How to handle an iPod."
- Press I/⏻.
- Press iPod to activate the function for iPod. The iPod indicator lights up.
- Press ►||. The iPod begins to play back. If the iPod does not start playing back, operate directly on the iPod. You can operate the connected iPod via this unit or the iPod itself.

To	Press
Pause playback	►
To resume play, press again.	►
Go to the next track	►► (forward) on the remote
Go back to the previous track	◄◄ (backward)* on the remote
Locate a point while listening to the sound	►► (forward) or ◄◄ (backward) on the remote while playing and hold until you find the desired point.
Go back to the previous menu	MENU on the remote
Select a menu item or a track for playback	⬆ (up)/⬇ (down) on the remote

To	Press
Execute the selected menu item or begin playback	ENTER on the remote

\* During playback, this operation returns you to the beginning of the current track. To go back to the previous track, press twice.

- Notes**
- If a pop-up message appears on the display of the iPod touch, iPhone or iPad, see "About App."
  - Some operations may differ or may not be available on some models of iPod.
  - If the battery of the iPod is extremely low, charge it for a while before operation.
  - Sony cannot accept responsibility in the event that data recorded to an iPod is lost or damaged when using the iPod connected to this unit.
  - For details of environmental conditions for operating an iPod, check the website of Apple Inc.

### To remove the iPod

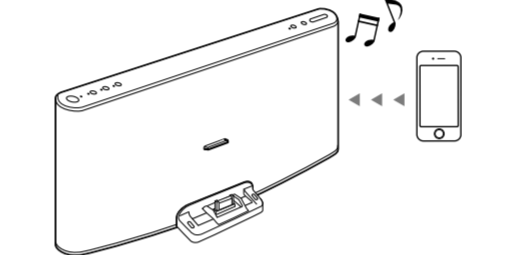
For details, see "How to handle an iPod."

### To charge an iPod

You can use the unit as a battery charger for an iPod. Charging begins when the iPod is connected to the unit. The charging status appears in the display on the iPod. For details, refer to the user's guide of the iPod.

### Operating by wireless music streaming

By using the Bluetooth connection, you can listen to the sound from an iPod or other Bluetooth device with the unit wirelessly.



**Pairing**

**What is pairing?**  
Bluetooth devices need to be "paired" with each other beforehand. Once Bluetooth devices are paired, there is no need for pairing again, unless pairing information is deleted.

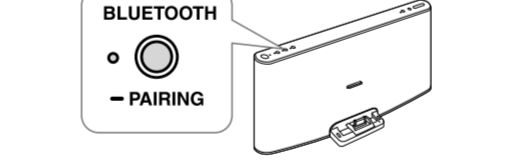
**Bluetooth indicator**

Status	Bluetooth indicator (blue)
Bluetooth off	Off
Bluetooth on but not connected	Flashes slowly
Pairing mode	Flashes quickly
Connected or communicating	Lights up

### To pair with an iPod

Keep the iPod and the unit within 1 meter of each other for this operation.

- Press I/⏻.
- Press BLUETOOTH (Ⓡ) on the remote to turn on the Bluetooth function when the Bluetooth indicator is off. The Bluetooth indicator flashes slowly.
- Press and hold BLUETOOTH (Ⓡ) on the remote). When pairing starts, a double-beep sound will be heard and the Bluetooth indicator will flash quickly. Pairing mode of the unit is activated.



- Perform the pairing procedure on the iPod to detect the unit. Select "Settings → General → Bluetooth" and turn on the Bluetooth function. The Bluetooth indicator lights up.



- Example: iPhone 4S**
- A list of detected devices appears on the display. The unit is displayed as "RDP-X200iP". If "RDP-X200iP" is not displayed, repeat from step 3. Select "RDP-X200iP" on the display of the iPod while the Bluetooth indicator flashes quickly. When "Connected" appears on the display of the iPod, pairing and connection are complete.



- Notes**
- The operation and display may differ depending on the model of iPod and/or software version. For details, refer to the user's guide of the iPod.
  - Pairing mode is canceled after about 5 minutes. If pairing mode is canceled halfway, start over from step 3.
  - If pairing is not complete, start over from step 3.
  - To pair with another iPod, repeat steps 1 to 5.
  - In step 3, if a double-beep sound is not heard or the Bluetooth indicator does not flash quickly, press and hold BLUETOOTH (Ⓡ) on the remote) again.
  - If you turn off the unit or the iPod before the Bluetooth connection is complete, pairing information will not be memorized, and pairing will not be completed.
- Notes on pairing with a Bluetooth device other than iPod**
- When pairing with a Bluetooth device other than iPod, after step 3, pass code input may be required in your Bluetooth device. In this case, input "0000."
  - The operation and display may differ depending on the Bluetooth device and/or software version. For details, refer to the user's guide of the Bluetooth device.

### To listen to sound

Keep the iPod and the unit within 10 meters of each other for this operation. Check the following before operating the unit.

- The Bluetooth function of the iPod is on.
  - Pairing of the unit and the iPod is complete. If pairing is not completed, perform pairing again. (See "To pair with an iPod.")
- Press I/⏻.
  - Press BLUETOOTH (Ⓡ) on the remote) to turn on the Bluetooth function. The last connected iPod will be reconnected automatically when the Bluetooth function is turned on.
  - Select your desired music, video, game, etc., to play on the iPod. For details, refer to the user's guide of the iPod.

**Tips**

- If the last connected iPod does not reconnect automatically, press BLUETOOTH (Ⓡ) on the remote). If it still does not reconnect, select the model name of this unit from the iPod. (Perform steps 4 to 5 in "To pair with an iPod.")

- To connect an alternative iPod, which has previously been paired with this unit, press BLUETOOTH (Ⓡ) on the remote) to disconnect the currently connected iPod. Then select the model name of the unit from the alternative iPod you want to connect.
- You can charge the iPod on the dock while listening to music via Bluetooth connection.
- If the volume level is low, adjust the volume of the unit first. If the volume is still too low, adjust the volume of the Bluetooth device.

### To finish listening

Terminate the Bluetooth connection by any of the following operations.

- Turn off the unit.
- Turn off the iPod.
- Press BLUETOOTH (Ⓡ) on the remote), iPod, or AUDIO IN.
- Operate the iPod to terminate the connection. For details, refer to the user's guide of the iPod.

### To clear the list of models already-paired and memorized in the unit

- Press I/⏻.
- Press BLUETOOTH (Ⓡ) on the remote) to turn on the Bluetooth function.
- Press and hold BLUETOOTH and VOLUME - on the unit at the same time. The MEGA BASS indicator flashes.

- Notes**
- You can perform step 3 to clear the list even during Bluetooth connection.
  - This operation cannot be performed when the unit is pairing.
  - To pair with this unit again, delete the model name of this unit from the iPod and perform pairing again. (See "To pair with an iPod.")

## Connecting optional components

You can enjoy the sound from an optional component, such as a portable digital music player, through the speakers of this unit. Be sure to turn off the power of each component before making any connections.

- Firmly connect the line output jack of the portable digital music player (or other component) to the AUDIO IN jack on the back of the unit, using a suitable audio connecting cable (not supplied).
- Press I/⏻ to turn on the unit.
- Press AUDIO IN to activate the Audio-in function. The Audio-in indicator lights up.
- Turn the connected component on.
- Play the connected component. The sound from the connected component is output from the speakers of this unit.

- Notes**
- The necessary type of audio connecting cable depends on the optional component. Be sure to use the correct type of cable.
  - If the volume level is low, adjust the volume of the unit first. If the volume is still too low, adjust the volume of the connected component.

## Other useful functions

### Reinforcing the bass sound

Press MEGA BASS. The MEGA BASS indicator lights up. To return to normal sound, press the button again.

### About App

A dedicated Dock App for iPod touch/iPhone/iPad available at Apple App Store. Search for "D-Sappli" and download the free App to find out more about the functions.

- Features**
- D-Sappli includes various timer functions: Alarm, Music Play Timer and Sleep Timer.
  - You can set up to 10 alarms, using songs in iPod or Preset Sound in D-Sappli for the alarm sound. Music Play Timer allows you to play/pause desired music at a desired time. Sleep Timer allows you to specify a time at which to stop music playback. Alarm, Music Play Timer and Sleep Timer work in combination with the power supply of the unit. Alarm, Music Play Timer and Sleep Timer are available only when D-Sappli is activated.
  - D-Sappli also includes a clock display enlarge feature.
- Notes**
- If the App to link with this unit is not downloaded to the iPod touch/iPhone/iPad, a pop-up message prompting you to download D-Sappli may appear repeatedly. Deactivate the App's link function to stop the pop-up message.
  - To deactivate the App's link function: Connect the AC adaptor, and then press I/⏻ to turn off the unit. Remove the iPod touch/iPhone/iPad from the Dock Connector. While holding down ►||, also press and hold I/⏻ on the unit for at least 2 seconds. (The power indicator flashes twice when deactivated.)
  - To re-activate the App's link function, repeat the above steps. (The power indicator flashes once when activated.)