



Mouse RM-1600L
User Manual



Welcome

Congratulations on your purchase of an ROSEWILL RM-1600L Laser mouse. ROSEWILL's new 5-Button USB Laser Mouse is an excellent tool for graphic designers, gamers, and desktop users. This new ROSEWILL mouse uses STMicro new Laser Technology, which provides high tracking power than regular mice using an optical sensor. This means that the USB Laser Mouse will work on virtually any surface, with its extremely high resolution of 1600 dpi. Take full control of your computer with RM-1600L 5-Button Laser Mouse.

Package Contents

- Laser mouse x 1
- Quick Installation Guide x 1

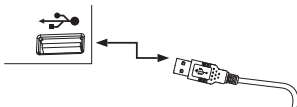


Rescure

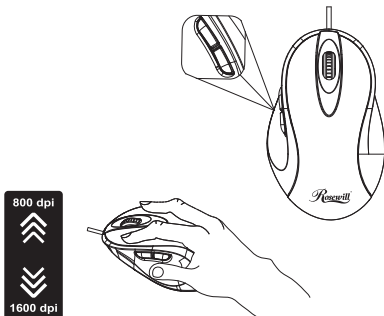
Mouse RM-1600L
User Manual

Hardware Installation

- Turn on computer
- Plug the mouse cable into a USB port



- Page Forward
- Page backward
- 4th and 5th buttons are internet navigation “forward” and “back” buttons.



DPI Switching

Mouse provides instant access to two selectable dpi resolutions for increased configurability of speed, precision and accuracy. Pressing the right and left side mouse button at the same time for 2 ~ 3 seconds to switch 800 and 1600 dpi.

Safety Measures

- While the mouse is functioning, no laser light is visible to the naked eye. Although this mouse is a Class 1 laser product and safe for operation, avoid pointing the laser into the eyes or looking directly into the laser emitter.
- Keep the mouse away from young children.
- Any attempt to disassemble, adjust or repair the mouse may result in exposure to laser light or other safety hazards.

Troubleshooting

I do not see the laser light when the mouse is active.

- Unlike traditional optical mice, the light is not visible when the laser mouse is active.
- To make sure the mouse is on and functioning properly, move the mouse back and forth and check to see if the cursor responds.

The mouse does not work on a mirror or glass surface.

- Though rated for most of these kinds of surfaces, occasionally there will be one such surface that will cause the mouse to work improperly or not at all.
- If you are using the mouse on a reflective or mirrored surface, move it to another surface.

Important Ergonomic Information

Research suggests that physical discomfort and injury to nerves, tendons, and muscles may be related to repetitive motion, and improperly set up work area, incorrect body posture, and poor work habits.

To reduce the risk of injury, follow these precautions:

- Stand, stretch, and move around several times every hour.
- Switch hands while performing tasks. Use shortcut button to avoid repetitive or awkward mouse movements.
- Relax your shoulders and keep your elbows at your sides, Adjust the keyboard's position so that you don't have to stretch to reach it.
- Adjust your position so that you don't have to bend your wrists to type' avoid placing your wrists on a sharp edge.

System Requirements

To use the laser mouse, your computer must meet the following hardware requirements and run one of the operating system listed below.

- Microsoft® Windows® 98SE, Windows® ME, Windows® 2000, Windows® XP or Windows® VISTA operating system.
- Microsoft® Internet Explorer 5.0 or later version.
- Macintosh® Mac® OS X 10.1~later
- USB version 1.1 interface

All product names are trademarks or registered trademarks of their respective owners. Microsoft®, Windows® and Windows® logo are trademarks or registered trademarks of Microsoft ® Corporation in the United States and /or other countries.

Thank you for purchasing a High-Quality Rosewill Product.

Please register your product at : www.rosewill.com

for complete warranty information and future support for your product.

If you have any question while using our products, please visit our website : www.rosewill.com