



Internet Keyboard Elite

User's Manual

Model KB565BL

FCC STATEMENT

KB565BL

This device complies with part 15 of FCC Rules. Operation is subject to the following two conditions: (1) this device may not cause harmful interference, and (2) this device must accept any interference received, including interference that may cause undesired operation. This equipment has been tested and found to comply with the limits for a Class B digital device, pursuant to part 15 of FCC Rules. These limits are designed to provide reasonable protection against harmful interference when the equipment is operated in a residential installation. This equipment generates, uses, and can radiate radio frequency energy and, if not installed and used in accordance with the instruction guide, may cause harmful interference to radio communications. However, there is no guarantee that interference will not occur in a particular installation. If this equipment does cause harmful interference to radio or television reception, which can be determined by turning the equipment off and on, the user is encouraged to try to correct the interference by one or more of the following measures:

- Reorient or relocate the receiving antenna.
- Increase the separation between the equipment and the receiver.
- Connect the equipment into an outlet on a circuit different from that to which the receiver is connected.
- Consult a service representative for help.

Properly shielded and grounded cables and connectors must be used in order to comply with FCC emission limits. Micro Innovations is not responsible for any radio or television interference caused by using other than recommended cables and connectors or by unauthorized changes or modifications to this equipment. Unauthorized changes or modifications could void the user's authority to operate the equipment.

Responsible party:

Micro Innovations

400 Clearview Ave.

Edison, NJ 08837

Telephone: (732) 346-9333



Tested To Comply With FCC Standards

FOR HOME OR OFFICE USE

Table of Contents

| | |
|--|---------|
| Welcome..... | Page 4 |
| Installation Procedures..... | Page 5 |
| Programmable Hot Keys..... | Page 6 |
| Customizing the On-Screen Display (OSD)..... | Page 7 |
| E-mail Detection Settings..... | Page 8 |
| Hot Key Definitions..... | Page 9 |
| Hot Key Definitions <i>Continued</i> | Page 10 |
| Hot Key Definitions <i>Continued</i> | Page 11 |
| Troubleshooting..... | Page 12 |
| Maintenance and Technical Support..... | Page 13 |

Some experts believe that the use of any keyboard may cause serious injury to hands, arms, neck, or back. If you feel any pain, numbness, or weakness in these areas seek help from a qualified health professional immediately.

TO REDUCE THE RISKS OF SUCH INJURIES FOLLOW THESE PRECAUTIONS

- Take frequent short breaks
- Vary your tasks throughout the day
- Keep your shoulders relaxed with your elbows at your side
- Position your keyboard and mouse so you do not have to reach for them
- Adjust your chair so your wrists are straight
- Avoid resting your wrists on sharp desk edges

Welcome

Congratulations on the purchase of your new Internet Keyboard Elite.

The Internet Keyboard Elite is compatible with IBM® or compatible PCs with an available USB port. It is supported by Windows® 98SE, Me, 2000, XP, and Vista™.

Features and Benefits

6 programmable hot keys will maximize the way you control your PC. Conveniently launch your favorite applications, digital music and the Internet with a touch of one button.

Conveniently placed multimedia controls offer easy access to most common media related commands.

Protective material located underneath the keycaps guards your keyboard from liquid spills for years of use.

Package Contents

- Internet Keyboard Elite (USB)
- Installation CD
- Quick Installation Guide
- User's Manual
- Warranty Information

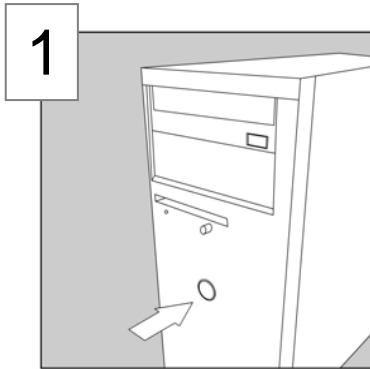
Installation Procedures

Important – It is required that you turn on your PC before beginning the installation procedures.

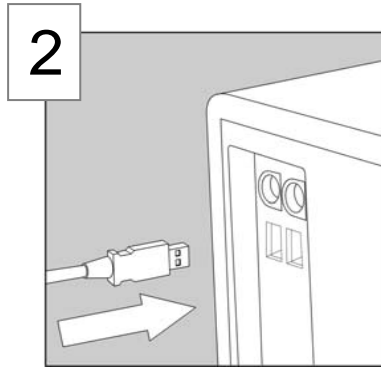
Step 1 -Turn on your PC.

Step 2 - Connect the USB connector to an available USB port on your PC. Your PC will determine the correct settings to operate this device.

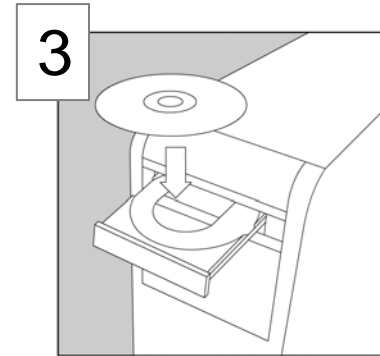
Step 3 - Install the software CD. *Note some operating systems need to be restarted in order for the program to function properly. It is recommended to restart your PC after installing this software program.



Turn on PC




Insert USB connector



Install software CD

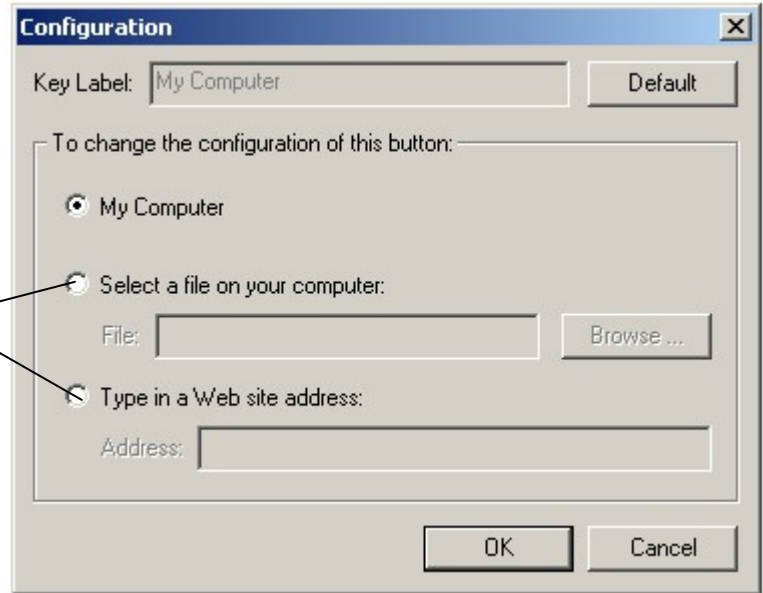
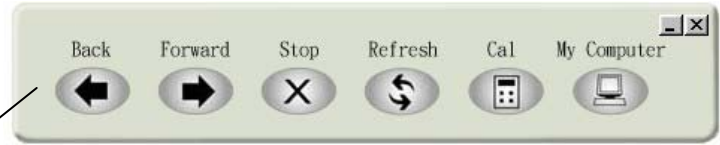
Programmable Hot Keys

The following icon  will appear in the lower right-hand corner of your system tray once the software is correctly installed.

To launch the programmable hot key interface, simply click on the keyboard icon. By default, the 6 programmable hot keys are designed to perform specific operations.

To change the configuration of these hot keys, select one of the alternate options provided on the configuration panel.

The options include assigning the hot key to open a specific file on your computer or launching a specific web site address.



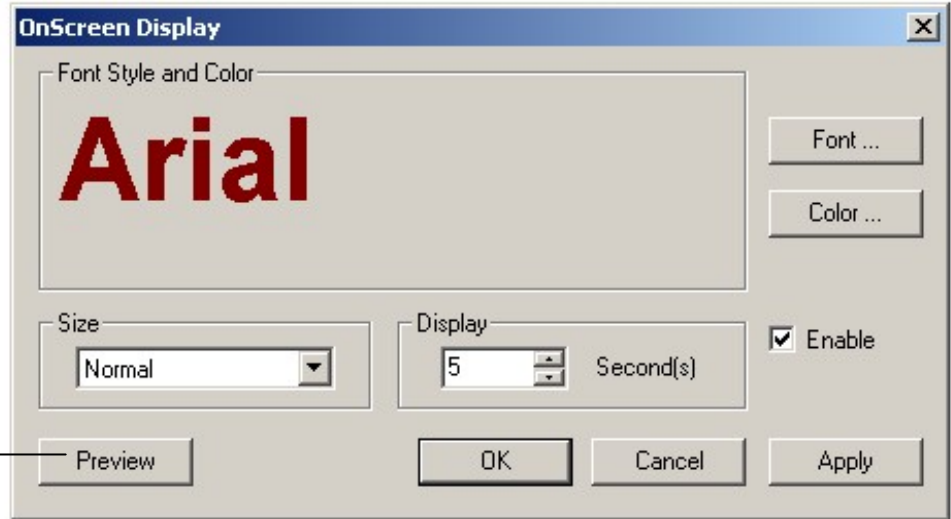
Customizing the On-Screen Display (OSD)

The On-Screen Display (OSD) is a visual display that indicates the hot key functions on your keyboard.


The On-Screen Display settings can be activated by clicking on the keyboard icon in the lower left-hand corner of your system tray.


Here you can customize the appearance of the On-Screen Display by changing font size or color. In addition, you can alter the length of time (delay) in which the display appears on the screen.

Click the "Preview" button to test your settings. Once you are satisfied with preview test, click "OK" to save your settings and close the On-Screen Display settings window.



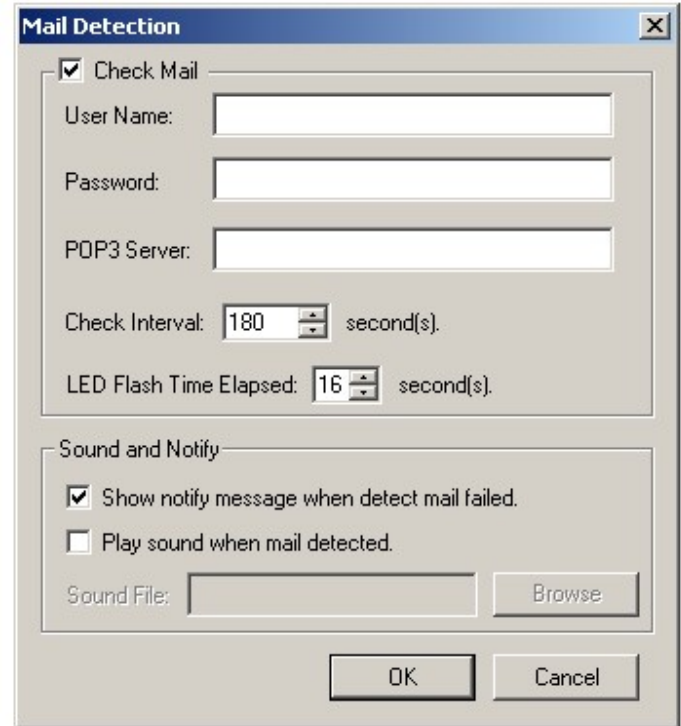
E-mail Detection Settings

1. Right click on the keyboard icon  located in the lower left-hand corner of your system tray.
2. Select "E-Mail Detection".
3. Click the check box next to "Check Mail".
4. Type your User Name in the User Name field. *Note you will have to use your complete e-mail address, for example; name@email.com
5. Type your password in the Password field
6. Type in the POP3 Server address of your e-mail service provider. You will have to contact your e-mail service provider for this information. * *Note AOL is not compatible with this feature.*
7. Click OK to complete the setup.

You will receive the following icon in you system tray  upon e-mail detection.









Additional settings and options for this feature include: Check Interval time and LED Flash time Elapsed. This will allow you to choose how often the program will check for new e-mails and how long each notification will last.

You also have the option to show a notification message when detection has failed and to play a sound file (.wav) when e-mail has been detected.











The image shows a Windows-style dialog box titled "Mail Detection". It has a blue title bar with a close button (X) in the top right corner. The dialog is divided into two main sections. The top section is titled "Check Mail" and contains a checked checkbox, a "User Name:" text box, a "Password:" text box, a "POP3 Server:" text box, a "Check Interval:" spinner box set to "180" with the label "second(s)", and an "LED Flash Time Elapsed:" spinner box set to "16" with the label "second(s)". The bottom section is titled "Sound and Notify" and contains a checked checkbox for "Show notify message when detect mail failed.", an unchecked checkbox for "Play sound when mail detected.", a "Sound File:" text box, and a "Browse" button. At the bottom of the dialog are "OK" and "Cancel" buttons.







Hot Key Definitions

| | |
|--|--|
|  Back | Press this button to go to the previous page |
|  Forward | Press this button to go to the next page |
|  Stop | Press this button to stop loading current web page |
|  Refresh | Press this button to update the current web page |
|  Mute | Press this button to turn the mute function on or off |
|  Media Player | Press this button to activate " Windows Media Player " |
|  Previous | Press this button to play previous media file (track) |
|  Next | Press this button to play next media file (track) |


Hot Key Definitions *Continued*

| | |
|--|---|
|  Volume Up | Press this button to increase volume |
|  Volume Down | Press this button to decrease volume |
|  Play/Pause | Press this button to play / pause media file (track) |
|  Stop | Press this button to stop media file (track) |
|  Favorites | Press this button to open / close " My Favorite Window " |
|  Search | Press this button to open " Search Window " for web address |
|  Web/Home | Press this button to launch your default "Home Page" |
|  Mail | Press this button to launch your default e-mail application |

Hot Key Definitions *Continued*

| | |
|---|--|
|  Power Down | <i>This functionality is available only if your system supports power management (ACPI). This key must be configured in your system BIOS. Please refer to the documentation that came with your computer or contact your computer's manufacturer for this information.</i> |
|  Sleep | <i>This functionality is available only if your system supports power management (ACPI). This key must be configured in your system BIOS. Please refer to the documentation that came with your computer or contact your computer's manufacturer for this information.</i> |
|  Calculator | Press this button to launch the "Calculator" |
|  My computer | Press this button to open "My Computer" |
|  Wake Up | <i>This functionality is available only if your system supports power management (ACPI). This key must be configured in your system BIOS. Please refer to the documentation that came with your computer or contact your computer's manufacturer for this information.</i> |
|  Fn Function Key + F11 | Press the Fn Key and F11 simultaneously to lock your keyboard. Pressing them a second time will unlock the keys. |

Troubleshooting

| Problem | Resolution |
|---|---|
| Keyboard hot keys do not work Keyboard is typing wrong characters | Try re-installing the software CD. Make sure that any previous keyboard drivers / software has been removed prior to using this device. <i>Please refer to the documentation that came with your previous keyboard or contact the manufacturer for this information.</i> |
| Keyboard is not responding (USB) | You might have plugged in the keyboard while the computer was off. Turn on your computer and reconnect your keyboard into an open USB port. |
| Windows Multimedia Player is not launching | You may need to update your Windows Multimedia Player (WMP). <i>*Note it is not recommended to use 3rd Party media players with this device. Such programs may cause unexpected problems.</i> |
| The following icon  appears in your system tray and e-mails are not detected | Your user name, password or POP3 service address setup may contain an error. Re-check your e-mail detection settings. |

Maintenance

- Maintaining your product will ensure longer life and will minimize the chance of causing damage to your keyboard and/or computer.
- Always disconnect the keyboard before cleaning.
- Keep all beverages away from the keyboard and avoid any spills.
- Keep the user's manual for future reference.
- Keep the software CD in a safe place for future installations.
- There are no user serviceable parts. Only Micro Innovations may service or repair this product.

For technical assistance visit www.microinv.com or call toll free: 1-877-550-5534.
Technical Support hours of operation: Monday - Friday 8:30am to 7:00pm E.S.T.