



MOBILITY ELECTRONICS, INC.®

www.igo.com

**iGo™ Stowaway® Ultra-Slim
Bluetooth® Keyboard
Owner's Manual**
for
Pocket PC 2003 and Windows Mobile™ 5.0



Keyboard Driver:

Stowaway 4.51

Table of Contents

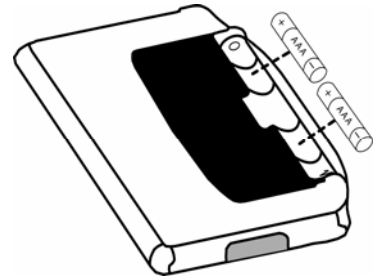
Setting up the Keyboard	3
Before You Begin	3
Installing the Software	3
Configuring the Keyboard to Your Device	4
Enabling the Keyboard Driver	4
Secured Connections	5
Unsecured Connections	7
Other Features	9
Power Efficient Modes	11
Firmware Upgrade	12
Reconnecting the Stowaway keyboard	13
Unsecured Mode Settings	14
Customizing Your Keyboard	15
Input Method Toolbar	15
Keyboard Control Panel	16
Disabling the Stowaway Keyboard	17
Secure Connection Overview	17
Keyboard Status Light	18
Using the Stowaway keyboard	19
Moving the Cursor/Highlighting Text	19
On-Screen Button and Editing Shortcuts	20
Launching and Navigating Applications	20
Windows Mobile 2003 Menu Navigation	21
Windows Mobile 5.0 Menu Navigation	21
Toolbar Navigation	22
Other Shortcuts	22
International and Extended Character Set	23
Frequently Asked Questions	25
Legal Notices	27
Trademarks	27
Warranty	28
Important Battery Information	30
Important Notes about Bluetooth Devices	31
Regulatory Notices	31
Features and Specifications Summary	38

Setting up the Keyboard

Before You Begin

Before you install the Stowaway keyboard and mouse software for Pocket PC 2003/Windows Mobile 5.0:

- **ActiveSync 4.0 or greater is required to install the keyboard driver application.**
- **Disable or uninstall any other keyboard or mouse applications that you have previously installed on your mobile device.**
- Ensure there is at least 250 KB of memory on your mobile device. To check the available memory, tap Start→Settings→System→Memory.
- Insert the 2 AAA batteries (included) beneath the battery cover of the Stowaway keyboard.



Installing the Software

1. Connect your mobile device to a computer using the docking cradle or sync cable.
2. Establish a connection between the computer and your mobile device using ActiveSync® 4.0 or later.
3. Insert the Stowaway CD-ROM into the CD-ROM drive on your PC.
4. Double-click the product, OS and language preferred to start the installation process. Follow the on-screen instructions to successfully install the software.

NOTE: The driver must be installed in **Main Memory** on your device (default location) to function properly.

5. When prompted to reset your device, tap the on-screen **OK** button to complete the installation.
6. After the driver is successfully installed and the mobile device is reset, the keyboard driver and mouse icons will appear in the **Programs** window.

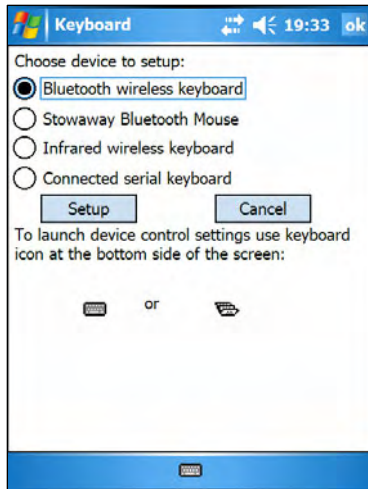
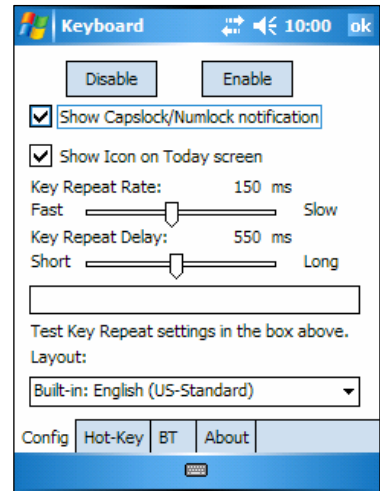


Configuring the Keyboard to Your Device

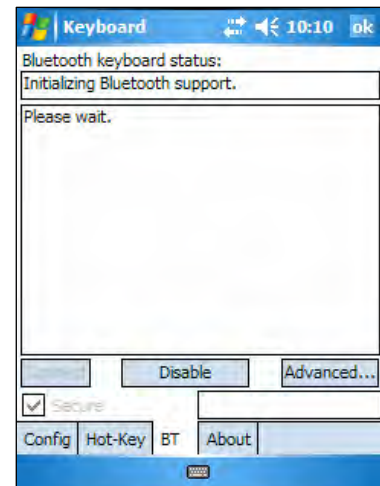
NOTE: The Bluetooth connection between the mobile device and keyboard must be set up through the Stowaway keyboard/mouse driver.

ENABLING THE KEYBOARD DRIVER

1. To enable the Stowaway keyboard, tap the **Enable** button on the **Config** screen of the keyboard application. This will open the **Keyboard Setup Screen**.



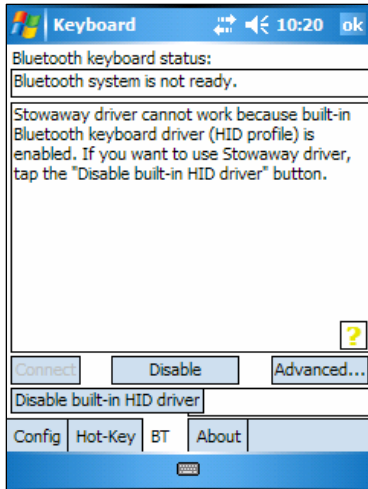
2. When the **Device Setup Screen** is shown, select the **Bluetooth wireless keyboard** option and tap **Setup**. This will show the **Bluetooth Keyboard Status Page** of the Stowaway keyboard application. You may also open that page by selecting the **BT** tab.



3. When Setup begins, the driver will enable the mobile device's Bluetooth system software; this is also known as the **Bluetooth Stack**.

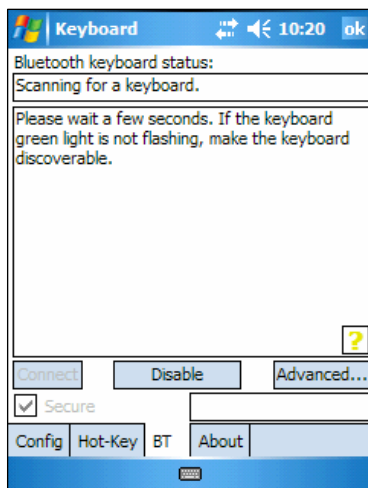
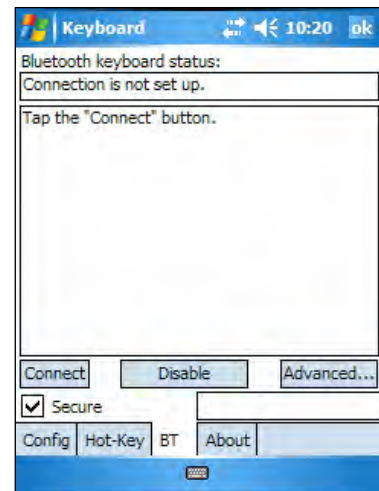
The following section deals strictly with Secure Connections. By default the Secure box is checked in the driver and is the recommended method, as it provides the best security and reconnection.

SECURED CONNECTIONS



1. On mobile devices with Windows Mobile 5.0 you may see a screen warning that the Stowaway Keyboard driver will not work with the built-in Bluetooth Keyboard driver. You must tap **Disable built-in HID** driver in order to get the full functionality of the keyboard.

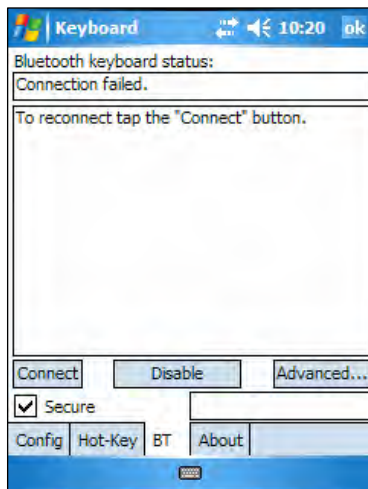
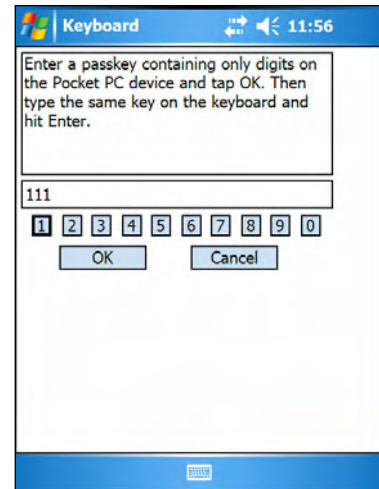
2. A **Secure connection** requires authentication by entering the same **passkey** on the mobile device and then on the keyboard. A Secure connection allows automatic reconnection. Before starting the connection make sure the keyboard is **Discoverable** by the mobile device. To do this, press the <Ctrl> <Left Fn> <Right Fn> keys together on the keyboard until the green LED (above the <T> key) flashes once per second. Then tap the **Connect** button on the screen.



3. The mobile devices will scan for the Stowaway Keyboard. Once it is discovered, a prompt will display allowing you to enter the **passkey**.

4. You will be prompted for a passkey and will see a **Bluetooth Passkey** dialog box. Enter a passkey **of your own choosing** (of 1-9 digits) using the mobile device's on-screen keyboard and tap OK. Then, type the same passkey number on the Stowaway keyboard, using <Left Fn> + <Number> keys. When finished, press the <Enter> key.

NOTE: The passkey must contain only digits, for example **111**.

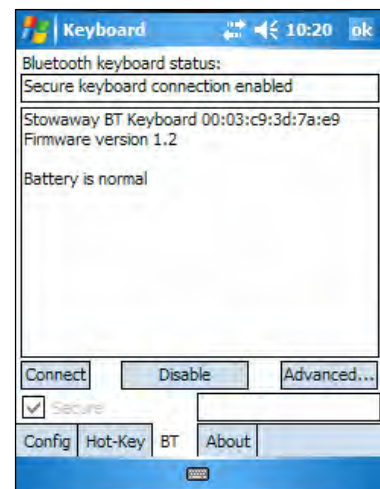


5. If the passkey is not entered correctly, the connection will fail. In this case you will need to repeat steps 1-4 from above.

NOTE: Please, make sure that the passkey is entered on-screen first, tap OK and then follow with the passkey on the keyboard. When finished, press the <Enter> key on the keyboard.

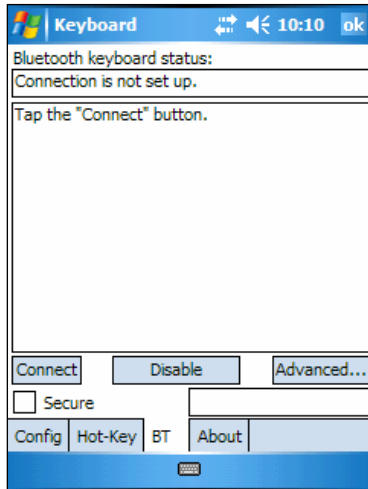
6. The keyboard is now **paired** and available for use. If the keyboard is closed, the mobile device is turned off or either is idle too long the connection will be broken. To reconnect, make sure both devices are powered on and within range, then press a key reestablish the connection. If reconnection fails tap the **Connect** button on the BT status page.

NOTE: It may take a couple of seconds for the connection to be reestablished after a key press.



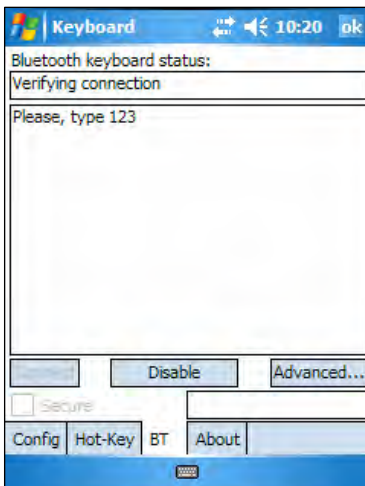
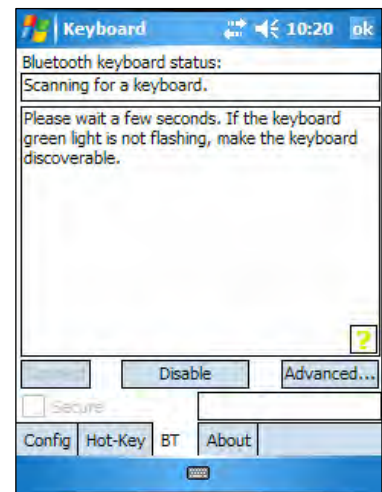
UNSECURED CONNECTIONS

The following sequence may depend on the settings in your Bluetooth Manager and which Bluetooth stack is present on your mobile device. For more information see [Unsecured Mode Settings](#).



1. Make the keyboard discoverable by pressing <Ctrl> <Left Fn> <Right Fn> keys together on the keyboard until the green LED (above the <T> key) flashes once per second. Make sure the **Secure** box is not checked and tap the **Connect** button on the screen.

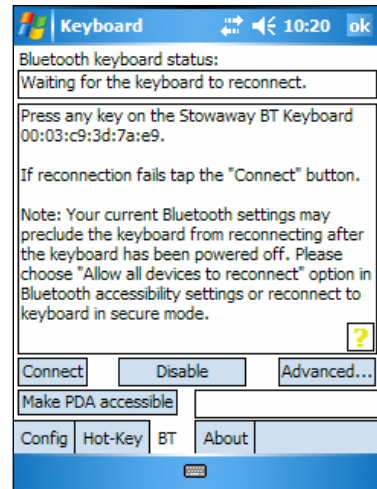
2. The mobile device will scan for the Stowaway Keyboard.



3. After the connection is made you may be prompted to verify the connection by typing 123 (QWE) on the keyboard.

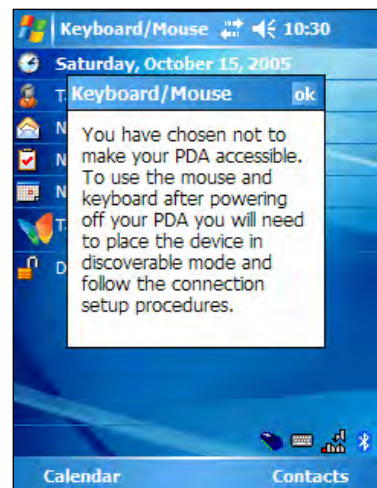
4. Depending on the mobile device's **Bluetooth Accessibility Settings** and Bluetooth Stack you may see this screen next. Tapping **Make PDA accessible** will set the Bluetooth Accessibility Settings to allow automatic reconnection of the mobile device and the keyboard when both are powered on and in range.

NOTE: This is a vulnerable configuration; please see [Unsecured Mode Settings](#) for more information.

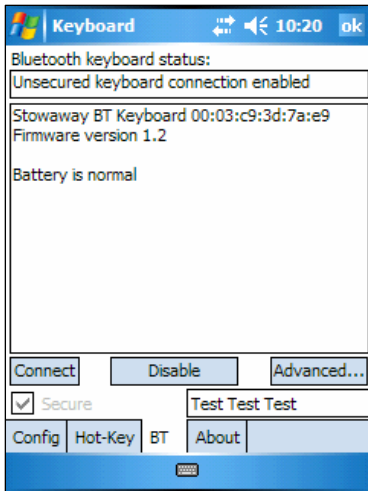


5. If you choose **Make PDA accessible** you will be prompted with this warning screen, tap **Yes** to finish making the connection.

6. If you choose not to **Make PDA accessible** by tapping **Cancel** or **No** you will be warned that future connections between the mobile device and the keyboard will need to be set up manually before each use.

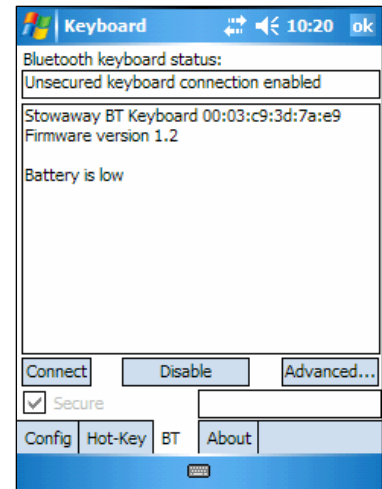


OTHER FEATURES



1. The **Bluetooth Status Page** displays the current state of the Bluetooth connection between your mobile device and the Stowaway keyboard. You can enable and disable the connection, and enter text to test the connection. Keyboard battery strength and firmware version are also displayed here. For more information on the **Advanced** tab see [Power Efficient Modes](#).

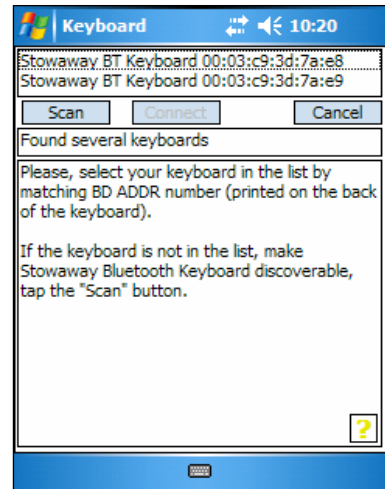
2. On the Bluetooth Status Page the keyboard battery information is displayed. The three states of the battery are:
 - a. **Normal** – This is the most common state of the battery.
 - b. **Low** – This is a warning that the batteries have reached a threshold where they should be replaced soon.
 - c. **Critical** – This means the batteries are in imminent danger of no longer functioning.



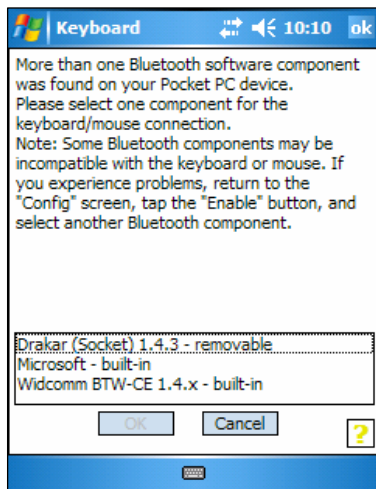
3. If the keyboard batteries reach a low or critical state a message will be displayed on the Today screen.

NOTE: The keyboard will display a **RED LED** above the <T> key to show when the batteries do not have enough power for the Bluetooth radio to function.

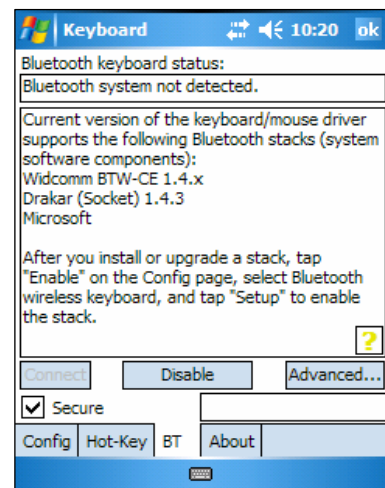
- If several Stowaway keyboards happen to be nearby and in **Discoverable Mode**, the scan will display all of these devices in the list. The keyboard ID (Bluetooth address) printed on the back of the keyboard should be compared with the IDs in the list and the desired keyboard selected.



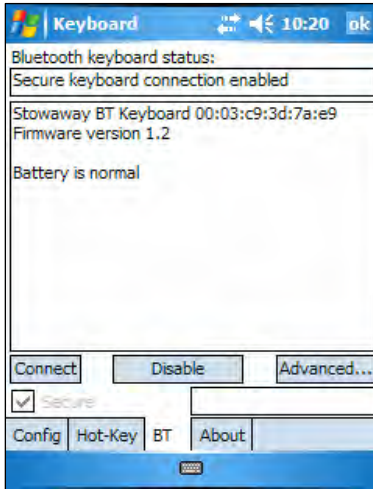
- If the application finds more than one Bluetooth stack on the mobile device, it will display a **Stack Selection** dialog box. If the device has a built-in Bluetooth system, that stack should be used. If the device is using a removable Bluetooth card such as a SDIO card, a different stack may need to be used. If the wrong stack is selected, a connection may not be possible. In such case, rerun the connection procedure and select the correct stack.



- If the keyboard driver displays the **Bluetooth system not detected** message, first verify that the driver has been loaded into **Main Memory**. Next, be sure that the device has not been upgraded with an incompatible version of the Bluetooth stack. In this case the keyboard software must be replaced with a compatible version.

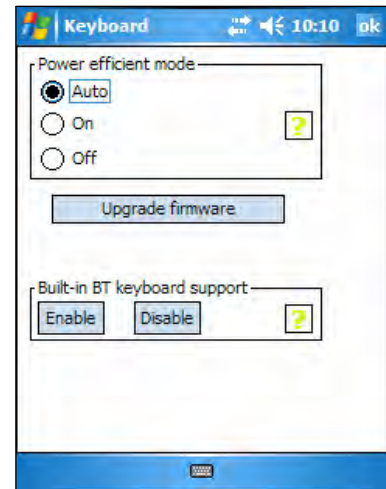


POWER EFFICIENT MODES



1. The Advanced tab allows access to different power efficiency modes.

2. The Stowaway keyboard is designed to operate in Power Efficient Mode in compliance with the Bluetooth specification. However, some mobile devices have difficulty operating effectively with Power Efficient Mode set to **ON**. The default setting is **Auto**, this allows the keyboard driver to determine whether to use Power Efficient mode or not. If the driver detects a mobile device which may work incorrectly in Power Efficient mode, it will turn it **OFF** automatically. You should turn **OFF** Power Efficient mode manually if you experience problems such as:



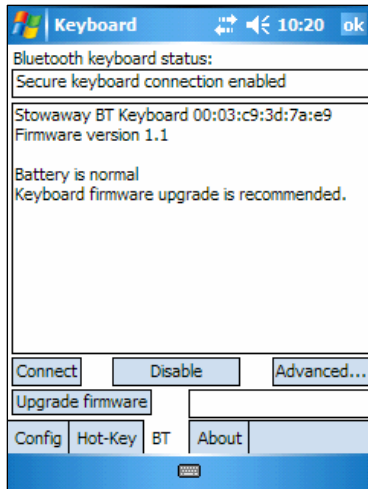
- Inability to **Scan** for other Bluetooth devices.
- Inability to **Connect** to other Bluetooth devices.
- Inability to **Discover** the mobile device and connect to it from another Bluetooth host.

NOTE: Turning off Power Efficient mode will shorten the battery life in your Bluetooth devices.

Power Efficient mode may be turned **ON** manually to extend battery life if the mobile device fully supports it or only one Bluetooth peripheral is used at a time.

FIRMWARE UPGRADE

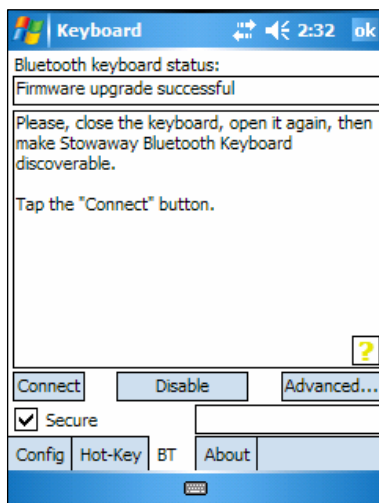
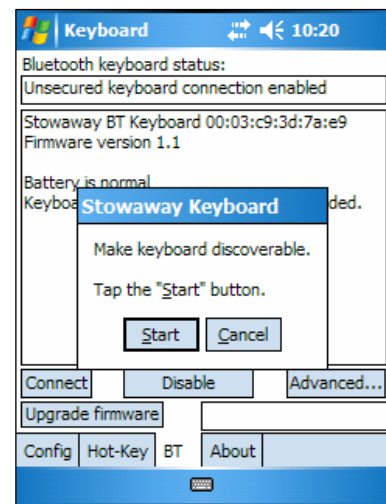
Depending on the version of your keyboard, you may see an **Upgrade Firmware** button on the **BT** page, and a message advising that the firmware be upgraded. This updates the keyboard's ROM software and will improve functionality and compatibility with more devices.



1. Tap **Upgrade firmware** to begin the process.
NOTE: This process may also be done from the **Advanced** page by tapping **Upgrade firmware**.

2. Press <Ctrl> <Left Fn> <Right Fn> simultaneously until the green light above the <T> key flashes once per second, then tap **Start**.

NOTE: While the firmware is being upgraded be sure that the keyboard and mobile device are not disturbed and that no other Bluetooth activities are taking place.



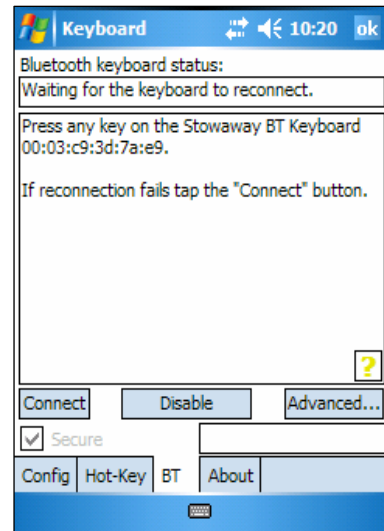
3. When the firmware upgrade process is completed, power cycle the keyboard by closing and reopening it.
NOTE: Following the upgrade, it will be necessary to reestablish a connection between the keyboard and the mobile device. See [Configuring the Keyboard to Your Device](#) for instructions.

Reconnecting the Stowaway keyboard

For information on *Unsecured* connections and re-connections see [Unsecured Mode Settings](#).

Despite a high degree of reliability, the Bluetooth connection could break for many reasons:

- The keyboard will power off when the cover is closed and the Bluetooth connection will be lost.
- For power efficiency, the keyboard will automatically power down after an *idle period* (when there is no activity for approximately 3 minutes).
- When the mobile device is turned off, the established Bluetooth connection will be lost.
- When the mobile device and the keyboard move beyond the wireless range (~10m), the connection will be lost.



When any of these conditions occurs, the connection will be lost and the software will switch to waiting mode. To restore the connection, make sure the keyboard and mobile device are powered on and in range, then tap any key on the keyboard. The connection should be reestablished within 2-3 seconds but this may be delayed if the Bluetooth system on the mobile device is busy. For example, after the mobile device is powered on, it may take 10 or more seconds for the Bluetooth system to re-initialize.

NOTE: Do not press <Ctrl> <Left Fn> <Right Fn> together. This will break the bond between the keyboard and the Pocket PC device. If this happens, you will have to establish a new connection as described above.

Even when disconnected, the mobile device and the keyboard remain bonded. The keyboard will only reconnect to the bonded mobile device and the mobile device will only listen to the bonded keyboard. To break the bond press <Ctrl> <Left Fn> <Right Fn> for approximately 1 second or until the green LED flashes quickly. Normally the bond will not need to be broken unless the keyboard will be used with another mobile device or another keyboard will be used with the mobile device. Therefore, please avoid pressing <Ctrl> <Left Fn> <Right Fn> during normal operation. If this has happened, you will have to establish a new connection as described in the [Secured Connections](#) section above.

Unsecured Mode Settings

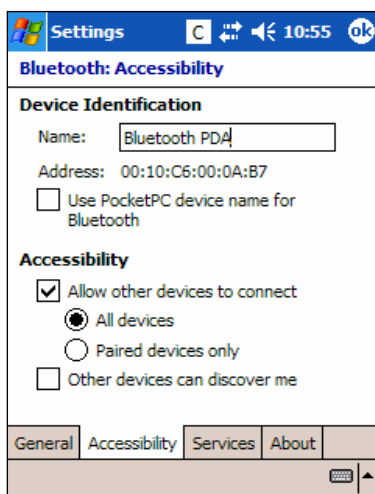
For those using Windows Mobile 2003 or a non-Microsoft Bluetooth stack, there are two Bluetooth settings that affect how the keyboard and the mobile device connect in **Unsecured** mode. **All Devices** and **Paired devices only**.

In order to automatically reconnect in **Unsecured** mode, the mobile device's Bluetooth settings must be set to allow **All Devices** to connect. Each manufacturer's Bluetooth configuration screens differ, but generally you will find the All devices and Paired devices only options within the Bluetooth Settings under the Accessibility tab. This set of screens may be available directly via a Bluetooth icon on the Today screen, or by navigating to the Start Menu⇒Settings⇒Connections tab.

If your device is set to Paired devices only you will be prompted to **Make PDA accessible** during the initial set up of the keyboard. This will change the settings to All devices.

NOTE: Because they are not encoded, Unsecured connections do not provide built-in signal encryption and are vulnerable to eavesdropping of the data transmitted between the keyboard and the mobile device.


If you choose to create an Unsecure connection and **Cancel** at the Make PDA accessible dialog, the settings will remain in the Paired devices only state. This means that before each use of the keyboard it will need to be made discoverable (<Ctrl> <Left Fn> <Right Fn>) and the connection will need to be manually set up, see [Unsecured Connections](#) for instructions on how to do this.



Proper settings for automatic reconnection of keyboard in Unsecured mode using a non-Microsoft Bluetooth stack.

NOTE: For those using windows Mobile 5.0 or a Microsoft Bluetooth stack there are no adjustments to make it is simply a matter of checking or unchecking the Secure box on the BT page.

Customizing Your Keyboard

Once the keyboard software is installed on the mobile device, you may customize the options. A keyboard icon  will appear on the screen while using Calendar, Contacts, or other applications.

- Tap the keyboard icon once to display the Input Method Toolbar.
- Tap the keyboard icon on the Input Method Toolbar to display the Keyboard Control Panel.

NOTE: Tapping the keyboard icon once at the Today screen once will first display the Keyboard Control Panel. Tapping the same keyboard icon will display the Input Method Toolbar.

Input Method Toolbar

There are four icons that appear on the Input Method Toolbar. This assumes that the **Stowaway Keyboard** input method is selected. The leftmost icon shows the state of the Bluetooth connection; there are three different states that can be indicated. A tap and hold on this icon will display a text message describing the state.



- This shows that the Bluetooth connection is active.



- This shows that the driver is waiting for the keyboard to reconnect.



- This shows that the connection is not setup.

The other three icons relate to other features of the keyboard driver.



- Tap this speaker icon to turn the keyboard clicking sounds on or off.



- Tap this keyboard icon to access the Keyboard Control Panel. This second keyboard icon appears above the keyboard icon that is visible in the lower right corner of the screen.



- Tap this help icon to access keyboard help topics and troubleshooting tips.

Keyboard Control Panel

On the **Config** tab:

- Tap **Enable** (the next screen allows you to turn on access to the Stowaway keyboard) to choose which keyboard to enable. Tap **Disable** to turn off access to all keyboards.
- To see a visual indication if the keyboard is in Caps Lock or Num Lock mode, check or uncheck the **Show Capslock/Numlock notification** option.
- To select whether or not the keyboard icon will appear in the lower right corner of the Today screen, check or uncheck the **Show Icon on Today screen** option.
- To **increase** key repeat speed, drag the **Key Repeat Rate** slider to the **left**.
- To **decrease** key repeat speed, drag the **Key Repeat Rate** slider to the **right**.
- To **increase** key repeat delay, drag the **Key Repeat Delay** slider to the **right**.
- To **decrease** key repeat delay, drag the **Key Repeat Delay** slider to the **left**.
- To verify the language layout installed, tap the down-arrow in the drop down box under **Layout**.

On the **Hot-Key** tab:

- Tap the down-arrow next to a number and select the application to associate with that number. When you press the <Alt> <LFn> <number> key combination (e.g. <Alt> <LFn> <4>), the selected application will launch. You may assign up to 10 applications in this manner. (There are 2 Fn keys on the Bluetooth keyboard. The **blue** <Fn> key is to the left of the spacebar and is referred to as <LFn>. The **green** <Fn> key is to the right of the spacebar and is referred to as <RFn>.)

On the **BT** tab:

- This is where all functions of the **Stowaway keyboard** can be accessed.

On the **About** tab:

- The About tab indicates the keyboard software version installed on your mobile device.

Disabling the Stowaway Keyboard

When the Stowaway keyboard is no longer needed, the keyboard driver may be disabled by tapping the **Disable** button on the **BT** or **Config** page. The **Connection is not set up** message will then be displayed on the **BT** page.

NOTE: Disabling the Stowaway keyboard will not automatically turn off the Bluetooth radio. Conversely, turning the Bluetooth radio off while the Stowaway keyboard driver is still enabled will not work. Because of the behavior of the Bluetooth stack, the Bluetooth radio will automatically turn back on after a few seconds. To turn the radio off, the Stowaway keyboard must be disabled first.

To re-enable the connection, tap the **Connect** button on the **BT** page or tap **Enable** on the **Config** page. See [Configuring the Keyboard to Your Device](#) for complete instructions.

Secure Connection Overview

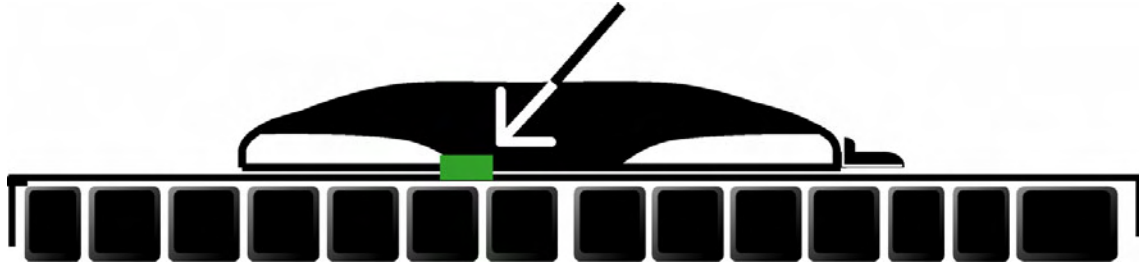
When a secure connection is established, the paired devices share a permanent security bond. This bond is established when two devices create and exchange a **Link Key**, this process is also known as **pairing**. Link Keys are based on a unique **Bluetooth Device Address**, an internally generated random number and a user defined **Passkey**.

With a Bluetooth connection, transmissions may be intercepted. In order to limit this exposure, a secure connection should be set up. This encrypts data sent from the keyboard to the mobile device, creating a **virtual cable**. This means that there is a 1:1 relationship between the mobile device and the keyboard and it will not respond to connection requests from other devices. The mobile device on the other hand will retain the ability to create new pairings with other devices.

The mobile device searches the Bluetooth radio band until it finds the keyboard. If the Secure box is checked it will prompt for a Passkey. Once completed, each time the mobile device and keyboard are powered on within range of each other, the devices will be reconnected with a key press.

Keyboard Status Light

When the keyboard is open there is a light above the <T> key that indicates the status of the keyboard.



- When the keyboard status light flashes a fast green light (approx. once per second) it is in **Discoverable mode**. This is the state that allows it to be detected by the mobile device. To place the keyboard into Discoverable mode, use the <Ctrl> <Left Fn> <Right Fn> key combination.
- When keyboard status light flashes a slow green light (approx. once every four seconds) it is connected to the mobile device and is available for use.
- When the keyboard status light is solid red for 5 seconds after power on, the batteries must be replaced before the keyboard can resume normal operation.
- When the keyboard is not connected to the mobile device the status light is dark. This happens when a connection or reconnection has not been established or the connection has been broken.

Using the Stowaway keyboard

- Commands joined by a dash “–” mean that the key combination must be pressed in order and with all keys held down at the same time.
- Commands joined by a plus “+” mean that the key following the “+” must be pressed after the initial key combination is pressed and released.
- The keyboard provides 2 separate color-coded function keys (**blue** <Fn> and **green** <Fn>) that enable you to navigate the device or access numbers and symbols. In the tables below, the **blue** <Fn> key is to the left of the spacebar and is referred to as <LFn>. The **green** <Fn> key is to the right of the spacebar and is referred to as <RFn>.

Moving the Cursor/Highlighting Text

You can easily navigate, position the cursor, and select text for subsequent editing functions with these key combinations:

Action	Shortcut
The cursor moves left (back) one word	<Ctrl>--<←>
The cursor moves right (forward) one word	<Ctrl>--<→>
Select (highlight) next character to the left	<LFn>--<←>
Select (highlight) next character to the right	<LFn>--<→>
Select (highlight) previous line	<LFn>--<↑>
Select (highlight) next line	<LFn>--<↓>
Select (highlight) the next word to the left	<Ctrl>--<LFn>--<←>
Select (highlight) the next word to the right	<Ctrl>--<LFn>--<→>
Select (highlight) the previous paragraph	<Ctrl>--<LFn>--<↑>
Select (highlight) the next paragraph	<Ctrl>--<LFn>--<↓>
Beginning of the line	<RFn>--<←>
End of the line	<RFn>--<→>
Page up one page at a time	<RFn>--<↑>
Page down one page at a time	<RFn>--<↓>
The cursor moves to the beginning of the document	<Ctrl>--<RFn>--<←>
The cursor moves to the end of the document	<Ctrl>--<RFn>--<→>
The cursor moves to the top of the page	<Ctrl>--<RFn>--<↑>
The cursor moves to the bottom of the page	<Ctrl>--<RFn>--<↓>

On-Screen Button and Editing Shortcuts

From the keyboard, you can activate on-screen buttons such as (OK) or (X) and access application editing functions. Refer to the following table for the appropriate keyboard shortcut.

On-Screen Button or Editing Function	Shortcut
OK	<LFn>--<Enter>
Send (simulates a screen tap on Send)	<LFn>--<. >
Close a window or application	<LFn>--<X>
Generate an ESC	<LFn>--<Tab>
Turns on NumLock mode	<LFn>--<CapsLock>
Turns on CapsLock mode	<CapsLock>
New item	<Ctrl>--<N> or <LFn>--<N>
Cut selected text	<Ctrl>--<X>
Copy selected text	<Ctrl>--<C>
Paste cut or copied text	<Ctrl>--<V>
Undo last action	<Ctrl>--<Z>
Select all	<Ctrl>--<A>
Emulate left Softkey (where applicable)	<LFn>--<Left Spacebar>
Emulate right Softkey (where applicable)	<LFn>--<Right Spacebar>

Launching and Navigating Applications

To launch software applications and navigate among them, refer to the following table:

Action	Shortcut
Access Programs screen	<LFn>--<C>
Access Settings screen	<LFn>--<V>
Launch Today screen	<LFn>--<Z>
Launch Calendar	<LFn>--<A>
Launch Contacts	<LFn>--<S>
Launch Inbox	<LFn>--<D>
Launch Tasks	<LFn>--<F>
Launch Notes	<LFn>--<J>
Launch Word	<LFn>--<K>
Launch Excel	<LFn>--<L>
Launch Internet Explorer	<LFn>--<;>
Launch up to 10 user selected applications (refer to "Hot-Key tab" section for more information)	<Alt>--<LFn>--<number>
Toggle among open and recently used programs.	<Alt>--<Tab> (Hold the Alt key and hit the Tab key until the program you want is selected, then release keys to make it active)

Windows Mobile 2003 Menu Navigation

NOTE: The following table only applies to those using Windows Mobile 2003 (Pocket PC). For users of Windows Mobile 5.0 see below.

Action	Key command
<p>To activate a program's menu bar at the bottom of the mobile device screen and select a main menu item use one of these 2 methods:</p> <ol style="list-style-type: none"> 1. Press and release the <Alt> key, then use the arrow keys to scroll left and right until the main menu item you want is highlighted. <p style="text-align: center;">or</p> <ol style="list-style-type: none"> 2. Press and hold the <Alt> key, then press the letter key that corresponds to the first letter of the main menu item (e.g. to access the Tools menu in Word, hold the <Alt> key then press <T>). 	<p><Alt>+<⇨> or <Alt>+<⇩></p> <p><Alt>—first letter of main menu item</p>
<p>To access a program's submenu, first select a main menu item and then navigate the submenu using the up and down arrow keys. Press the <Enter> key to choose the submenu item.</p>	<p><⇧> or <⇩></p> <p><Enter></p>

Windows Mobile 5.0 Menu Navigation

At the bottom of the screen are two menu items that vary by application and context. They can be reproduced with the keyboard by pressing <LFn>—<Left Spacebar> for the left menu item and <LFn>—<Right Spacebar> for the right menu item.

Toolbar Navigation

Action	Key command
<p>To access a program's toolbar at the top of the mobile device's screen:</p> <ol style="list-style-type: none">1. Press and hold the <RFn> key and then press the <Tab> key.2. Use the left and right arrow keys to highlight the Tool bar item you want.3. Press <Enter> to select the highlighted tool bar item.4. Use the up and down arrow keys to highlight the submenu item you want.5. Press <Enter> to select the highlighted submenu item.	<p>< RFn >--<Tab> <←> or <→> <Enter> <↑> or <↓> <Enter></p>

Other Shortcuts

Several shortcuts shown below provide you additional flexibility when using the Stowaway keyboard:

Action	Shortcut
Show/hide the Input Method Toolbar	<Alt>--<↑>
Launch the Keyboard Control Panel	<Alt>--<↓>
Turns off the mobile device. NOTE: Pressing a keyboard key will not turn it back on.	<LFn>--<Backspace>


International and Extended Character Set

Character	Description	Shortcut
Á, É, Í, Ó, Ú, Ý	Acute accent	<Ctrl>–<'>+<Shift>–<letter>
á, é, í, ó, ú, ý	Acute accent	<Ctrl>–<'>+<letter>
Â, Ê, Î, Ô, Û	Circumflex accent	<Ctrl>–<RFn>–<Y>+<Shift>–<letter>
â, ê, î, ô, û	Circumflex accent	<Ctrl>–<RFn>–<Y>+<letter>
Ä, È, Ì, Ò, Ù, Ý	Dieresis accent (umlaut)	<Ctrl>–<Shift>–<;>+<Shift>–<letter>
ä, è, ì, ò, ù, ý	Dieresis accent (umlaut)	<Ctrl>–<Shift>–<;>+<letter>
À, È, Ì, Ò, Ù	Grave accent	<Ctrl>–<LFn>–<'>+<Shift>–<letter>
à, è, ì, ò, ù	Grave accent	<Ctrl>–<LFn>–<'>+<letter>
Ã, Õ, Ñ	Tilde accent	<Ctrl>–<RFn>–<'>+<Shift>–<letter>
ã, õ, ñ	Tilde accent	<Ctrl>–<RFn>–<'>+<letter>
Ă	Dot accent	<Ctrl>–<RFn>–<W>+<Shift>–<A>
ă	Dot accent	<Ctrl>–<RFn>–<W>+<A>
Ç	Cedilla	<Ctrl>–<, >+<Shift>–<C>
ç	Cedilla	<Ctrl>–<, >+<C>
Ø	Capital naught	<Ctrl>–</>+<Shift>–<O>
ø	Lower case naught	<Ctrl>–</>+<O>
Æ	Æ	<Ctrl>–<RFn>–<U>+<Shift>–<A>
æ	æ	<Ctrl>–<RFn>–<U>+<A>
Œ	Œ	<Ctrl>–<RFn>–<U>+<Shift>–<O>
œ	œ	<Ctrl>–<RFn>–<U>+<O>
ß	Beta	<Ctrl>–<RFn>–<U>+<S>
?	Question Mark	<Shift>–<↑>
¿	Inverted Question Mark	<Ctrl>–<Alt>–<Shift>–<↑>
!	Exclamation	<RFn>–<Q>
¡	Inverted Exclamation	<Ctrl>–<Alt>–<RFn>–<Q>
•	Bullet	<Ctrl>–<Alt>–<W>
°	Degree	<Ctrl>–<Alt>–<D>
μ	Micro	<Ctrl>–<Alt>–<U>
¶	Paragraph symbol	<Ctrl>–<Alt>–<LFn>–</>
§	Section	<Ctrl>–<Alt>–<S>
@	At sign	<RFn>–<W>
©	Copyright	<Ctrl>–<Alt>–<C>
™	Trademark	<Ctrl>–<Alt>–<T>
®	Registered trademark	<Ctrl>–<Alt>–<R>
£	Pound (British)	<Ctrl>–<Alt>–<P> or <RFn>–<;>
¥	Yen	<Ctrl>–<Alt>–<Y> or <RFn>–<. >
₣	Franc	<Ctrl>–<Alt>–<F>
₵	Lira	<Ctrl>–<Alt>–<L>
€	Euro	<Ctrl>–<Alt>–<E> or <RFn>–<, >
¢	Cents	<Ctrl>–</>+<C>
\$	Dollar sign	<RFn>–<R>

Character	Description	Shortcut
½	One-half	<Ctrl>–<Alt>–<LFn>–<W>
¾	Three-quarter	<Ctrl>–<Alt>–<LFn>–<E>
¼	One-quarter	<Ctrl>–<Alt>–<LFn>–<R>
±	Plus-Minus	<Ctrl>–<Alt>–<Shift>–<=>
÷	Division	<Ctrl>–<Alt>–<->
#	Number sign	<RFn>–<E>
%	Percent	<RFn>–<T>
^	Caret	<RFn>–<Y>
&	Ampersand	<RFn>–<U>
*	Asterisk	<RFn>–<I>
(Left parenthesis	<RFn>–<O>
)	Right parenthesis	<RFn>–<P>
{	Left curly bracket	<RFn>–<->
}	Right curly bracket	<RFn>–<=>
~	Tilde	<RFn>–<'>
	Vertical bar	<RFn>–</>
\	Reverse solidus	<LFn>–</>
`	Grave	<LFn>–<'>
[Left square bracket	<LFn>–<->
]	Right square bracket	<LFn>–<=>

Frequently Asked Questions

Q: What should I do when I type on the keyboard and nothing happens?

- Check that mobile device's batteries are charged.
- Verify that keyboard has sufficient power to operate.
- Check to make sure that the keyboard software is installed properly according to the instructions.
- Check the **BT** tab of the **Keyboard Control Panel** to make sure the **Stowaway BT Keyboard** is enabled.
- Check the **Config** tab of the **Keyboard Control Panel** to make sure you've selected the appropriate keyboard type. After tapping **Enable**, you should select **Bluetooth wireless keyboard**.
- Use the Keyboard Help icon to launch the help. 

Q: I tried to turn off the Bluetooth radio and it automatically turned back on, what should I do?

The Stowaway keyboard must be disabled before the Bluetooth radio can be turned off. See the [Disabling the Stowaway Keyboard](#) section for more information.

Q: What are the Serial and IR tabs of the Keyboard Control Panel for?

If you should ever select and setup the **Connected serial keyboard** or **Infrared wireless keyboard** option on the **Config** tab of the **Keyboard Control Panel**, you will see a **Serial** and/or **IR** tab added to the **Keyboard Control Panel**. Even if you change back to the **Stowaway BT keyboard** the **Serial** and/or **IR** tab will remain in the **Keyboard Control Panel**. Serial keyboards use a physical connection versus a wireless connection to a mobile device. Only users of Stowaway keyboards that use a physical connection will use the **Serial** tab. Infrared keyboards use an infrared line of sight connection to a mobile device. Only users of **Stowaway Infrared Wireless** keyboards will use the **IR** Tab. Users of the **Stowaway BT keyboard** can ignore this tab.

Q: What is the Stowaway Bluetooth Mouse button for?

This is used to setup the optional Bluetooth mouse. This is only for users that also have the Stowaway Bluetooth Mouse.

Q: I received an error message saying the keyboard driver cannot find a supported Bluetooth component, what should I do?

The current version of the keyboard driver supports Broadcom Bluetooth for Windows CE (BTW-CE) version $\geq 1.4.x$, Drakar (Socket) and Microsoft Bluetooth stacks. If you have a different version, you may need to check for upgrades for either the Bluetooth stack or for the keyboard driver. (With some Bluetooth stacks it is possible to determine the version of the stack installed on your mobile device; locate the Bluetooth icon and tap it with the stylus to open the application. Find the Bluetooth About tab and tap to open the associated page. There you will find the version and build for the installed Bluetooth stack.)

Should the keyboard driver find more than one Bluetooth component on your mobile device (for example if you have Bluetooth built-in and a removable Bluetooth card), then a dialog box will be displayed with a choice of available components. You will need to choose the Bluetooth component that you wish to be used with the Bluetooth keyboard and tap OK.

NOTE: Some Bluetooth components may not work with the keyboard. If you are not able to connect to the keyboard, you may have to return to the **Config** page, tap **Enable** again, select **Bluetooth wireless keyboard**, tap **Setup**, and then select another Bluetooth component.

Q: My keyboard was connected and character input to mobile device worked fine, but after a certain *idle period*, it seems that the connection was lost.

Refer to the [Reconnecting the Stowaway keyboard](#) and [Unsecured Mode Settings](#) sections.

Q: How do I uninstall the keyboard driver?

Select Start=>Settings=>System tab=>Remove Programs. Select **Stowaway Keyboard and Mouse Driver** from the list of applications then tap the **Remove** button.

Legal Notices

Mobility California, Inc. and its affiliates shall not be liable for technical or editorial errors or omissions contained herein or for special, indirect, incidental or consequential damages whatsoever in connection with the furnishing, performance, or use of this material. The information in this document is provided "as is" without express or implied warranty of any kind, including, but not limited to, the implied warranties of merchantability and fitness for a particular purpose, and is subject to change without notice. The warranties for Mobility California products are set forth in the express limited warranty statements accompanying such products. Nothing herein should be construed as constituting an additional warranty. Mobility California assumes no responsibility for any loss or claims by third parties, which may arise through the use of this software. Mobility California does not warrant that the software will be error-free, nor that the software will run uninterrupted. Mobility California assumes no responsibility for any damage or loss caused by deletion of data as a result of malfunction, dead battery, or repairs. Be sure to make backup copies of all important data on other media to protect against data loss. Information in this document is subject to change without notice.

©2006 Mobility California, Inc. All rights reserved.

Reproduction of this document in any manner whatsoever without the written permission of Mobility California, Inc. is strictly forbidden.

Trademarks

Think Outside and Stowaway are registered trademarks of Mobility California, Inc. Broadcom is a registered trademark of Broadcom Corporation. Bluetooth and the Bluetooth logos are trademarks owned by Bluetooth SIG, Inc., U.S.A. and licensed to Broadcom Corporation. ActiveSync, Windows Mobile, Windows and Outlook are registered trademarks of Microsoft Corporation. Other trademarks and trade names may be used in this document to refer to either the entities claiming the marks and names or their products. No proprietary interest in other trademarks and trade names is claimed.

Warranty

Mobility California warrants this product against defects in materials and workmanship under normal use for a period of one (1) year from the date of original retail purchase. Mobility California's and its suppliers' entire liability, and your exclusive remedy, if you discover a defect and return the product with proof of purchase to Mobility California during the warranty period, is that Mobility California will, at its option, repair, replace, or refund the purchase price of the product to you at no charge. This limited warranty is void if the defect results from accident, alteration, abuse, improper use, or exposure to water or extreme temperature. TO THE MAXIMUM EXTENT PERMITTED BY LAW, THIS LIMITED WARRANTY IS EXCLUSIVE AND MOBILITY CALIFORNIA DISCLAIMS ALL OTHER WARRANTIES, EXPRESS OR IMPLIED, INCLUDING WARRANTIES OF MERCHANTABILITY, FITNESS FOR A PARTICULAR PURPOSE, TITLE AND NON-INFRINGEMENT. MOBILITY CALIFORNIA IS NOT RESPONSIBLE FOR SPECIAL, INCIDENTAL, INDIRECT OR CONSEQUENTIAL DAMAGES (INCLUDING WITHOUT LIMITATION, DAMAGES FOR LOST PROFITS, LOST SAVINGS, OR OTHER DAMAGES) ARISING OUT OF THE USE OR INABILITY TO USE THE PRODUCT OR THE BREACH OF ANY EXPRESS OR IMPLIED WARRANTY, EVEN IF MOBILITY CALIFORNIA HAS BEEN ADVISED OF THE POSSIBILITY OF THOSE DAMAGES. Because some jurisdictions do not permit the exclusion or limitations set forth above, they may not apply in all cases. This warranty is governed by the laws of the State of California.

Obtaining Warranty Service

Customer must contact Mobility California within the applicable warranty period to obtain warranty service authorization. Dated proof of original purchase will be required for warranty service, repair, or replacement. Products or parts shipped by Customer to Mobility California must be sent postage-paid and packaged appropriately for safe shipment. Mobility California is not responsible for Customer products received without a warranty service authorization and may be rejected. Repaired or replacement products will be shipped to Customer at Mobility California's expense. All products or parts that are replaced become the property of Mobility California. The repair and replacement process for products or parts in locations outside of the United States will vary depending on Customer's location.

Support@ThinkOutside.com

Mobility California
10 South Third Street
Fifth Floor
San Jose, California 95113
United States of America
www.igo.com

Registering Your Product

To register your Stowaway keyboard product, please visit www.thinkoutside.com/registration/registration.html and complete the online form.

Important Battery Information

- Keep battery away from children.
- Always replace old, weak or worn-out batteries promptly and recycle or dispose of them properly. Before inserting a new battery, the battery compartment should be cleaned. If fluid from the battery comes into contact with skin or clothes, flush with water immediately.
- Remove the battery if the device will be inactive longer than a month.
- Do not open, puncture or otherwise damage the battery.
- Do not use fire to dispose of battery.

Released battery electrolyte is corrosive and can cause damage to the eyes and skin and may be toxic if swallowed.

Comfortable Typing

Research suggests that physical discomfort and injury to nerves, tendons, and muscles may be related to repetitive motion, an improperly set up work area, incorrect body posture, and poor work habits.

To reduce the risk of injury, follow these precautions:

- Stand, stretch, and move around several times every hour.
- Every once in a while, work on a different task with your hands. Avoid repetitive motions. Use shortcut keys to move efficiently and avoid repetitive, awkward movement.
- Type gently and lightly.
- Relax your shoulders and keep your elbows at your sides. Adjust the keyboard so that you don't have to stretch to reach it.
- Adjust your position so that you don't have to bend your wrists to type; avoid placing your wrists on a sharp edge.

If you feel discomfort or numbness in your hands, wrists, arms, shoulders, neck or back while typing, get the advice of a qualified medical professional.

Important Notes about Bluetooth Devices

The Stowaway keyboard can emit radio frequency (RF) energy whenever the green LED is flashing. Care should be taken when used around medical devices or equipment. For specific information, consult with the product manufacturer or your physician before use. To stop interference, close the keyboard or remove its battery.

The Stowaway keyboard should not be used on any aircraft. Before boarding an aircraft, close the keyboard to ensure there is no RF transmission.

Regulatory Notices

Electromagnetic Interference (EMI) is any signal or emission, radiated in free space or conducted along power or signal leads, that endangers the functioning of radio navigation or other safety service or seriously degrades, obstructs, or repeatedly interrupts a licensed radio communication service. Radio communications services include but are not limited to AM/FM commercial broadcast, television, cellular services, radar, air-traffic control, pager, and Personal Communication Services (PCS). These licensed services, along with unintentional radiators such as digital devices, including computers, contribute to the electromagnetic environment.

Electromagnetic Compatibility is the ability of items of electronic equipment to function properly together in the electronic environment. While this keyboard has been designed and determined to be compliant with regulatory agency limits for EMI, there is no guarantee that interference will not occur in a particular installation. If this equipment does cause interference with radio communications services, which can be determined by turning the equipment off and on, you are encouraged to try to correct the interference by one or more of the following measures:

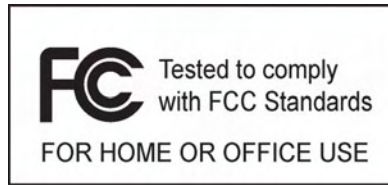
- Reorient the receiving antenna.
- Relocate the keyboard with respect to the receiver.
- Move the keyboard away from the receiver.

If necessary, consult an experienced radio/television technician for additional suggestions.

Wireless Regulatory Information

The Stowaway device must be used in strict accordance with the manufacturer's instructions as described in the user documentation that comes with the product. For country-specific approvals, see Radio approvals. Mobility California, Inc. is not responsible for any radio or television interference caused by unauthorized modification of the device, or the substitution or attachment of connecting cables and equipment other than that specified by Mobility California, Inc. The correction of interference caused by such unauthorized modification, substitution or attachment is the responsibility of the user. Mobility California, Inc. and its authorized resellers or distributors are not liable for any damage or violation of government regulations that may arise from the user failing to comply with these guidelines.

FCC Notices



This equipment has been tested and found to comply with the limits for a Class B digital device pursuant to Part 15 of the FCC Rules. These limits are designed to provide reasonable protection against harmful interference in a residential installation. This equipment generates, uses, and can radiate radio frequency energy and, if not installed and used in accordance with the manufacturer's instruction manual, may cause interference with radio communications. However, there is no guarantee that interference will not occur in a particular installation. If this equipment does cause harmful interference to radio or television reception, which can be determined by turning the equipment off and on, you are encouraged to try to correct the interference by one or more of the following measures:

- Reorient or relocate the receiving antenna.
- Increase the separation between the equipment and the receiver.
- Consult the dealer or an experienced radio/television technician for help.

This device complies with Part 15 of the FCC Rules. Operation is subject to the following two conditions: (1) This device may not cause harmful interference, and (2) this device must accept any interference received, including interference that may cause undesired operation.

Any changes or modifications not expressly approved by the party responsible for compliance could void the user's authority to operate this equipment.

FCC Radiation Exposure Statement

This equipment complies with FCC radiation exposure limits set forth for an uncontrolled environment. End users must follow the specific operating instruction for satisfying RF exposure compliance. This transmitter must not be co-located or operating in conjunction with any other antenna or transmitter.

FCC Identification Information

The following information is provided on the device or devices covered in this document in compliance with FCC regulations:

- Model number(s):

XTBT01

- Company name:

Mobility Electronics, Inc.
9918 Via Pasar
San Diego, California 92126
United States of America
1.858.880.2225

IC Notice

This Class B digital apparatus complies with Canadian ICES-003.
Cet appareil numérique de la classe B est conforme à la norme NMB-003 du Canada.

IC Radiation Exposure Statement

This equipment complies with IC radiation exposure limits set forth for an uncontrolled environment. End users must follow the specific operating instruction for satisfying RF exposure compliance. This transmitter must not be co-located or operating in conjunction with any other antenna or transmitter.

Europe – CE Declaration of Conformity

EN 301 489-1 (2004), EN 301 489-17 (2002), EN 300 328-1 (2001), EN 300 328-2 (2001), EN 60950 (2001)



English	Hereby, Mobility California, Inc. declares that this XTBT01 is in compliance with the essential requirements and other relevant provisions of Directive 1999/5/EC.
French	Par la présente Mobility California, Inc. déclare que l'appareil XTBT01 est conforme aux exigences essentielles et aux autres dispositions pertinentes de la directive 1999/5/CE.
German	<p>Hiermit erklärt Mobility California, Inc., dass sich <i>dieser/diese/dieses</i> XTBT01 in Übereinstimmung mit den grundlegenden Anforderungen und den anderen relevanten Vorschriften der Richtlinie 1999/5/EG befindet. (BMW)</p> <p>Hiermit erklärt Mobility California, Inc. die Übereinstimmung des Gerätes Tastatur mit den grundlegenden Anforderungen und den anderen relevanten Festlegungen der Richtlinie 1999/5/EG. (Wien)</p>
Italian	Con la presente Mobility California, Inc. dichiara che questo XTBT01 è conforme ai requisiti essenziali ed alle altre disposizioni pertinenti stabilite dalla direttiva 1999/5/CE.
Spanish	Por medio de la presente Mobility California, Inc. declara que el XTBT01 cumple con los requisitos esenciales y cualesquiera otras disposiciones aplicables o exigibles de la Directiva 1999/5/CE.
Portuguese	Mobility California, Inc. declara que este XTBT01 está conforme com os requisitos essenciais e outra disposições da Directiva 1999/5/EC.
Finnish	Mobility California, Inc. vakuuttaa täten että XTBT01 tyyppinen laite on direktiivin 1999/5/EY oleellisten vaatimusten ja sitä koskevien direktiiven muiden ehtojen mukainen.
Dutch	Hierbij verklaart Mobility California, Inc. dat het toestel XTBT01 in overeenstemming is met de essentiële eisen en de andere relevante bepalingen van richtlijn 1999/5/EG.

Swedish	Härmed intygar Mobility California, Inc. att denna XTBT01 står i överensstämmelse med de väsentliga egenskapskrav och övriga relevanta bestämmelser som framgår av direktiv 1999/5/EG.
Danish	Undertegnede Mobility California, Inc. erklærer herved, at følgende udstyr XTBT01 overholder de væsentlige krav og øvrige relevante krav i direktiv 1999/5/EF.
Greek	ΜΕ ΤΗΝ ΠΑΡΟΥΣΑ Mobility California, Inc. ΔΗΛΩΝΕΙ ΟΤΙ ΧΤΒΤ01 ΣΥΜΜΟΡΦΩΝΕΤΑΙ ΠΡΟΕ ΤΙΣ ΟΥΣΙΩΔΕΙΣ ΑΠΑΙΤΗΣΕΙΣ ΚΑΙ ΤΙΣ ΛΟΙΠΕΣ ΣΧΕΤΙΚΕΣ ΔΙΑΤΑΞΕΙΣ ΤΗΣ ΟΔΗΓΙΑΣ 1999/5/Ε.
Malti	Hawnhekk, Mobility California, Inc. jiddikjara li dan XTBT01 jikkonforma mal- ħtiġijiet essenzjali u ma provvedimenti oħrajn relevanti li hemm fid-Dirrettiva 1999/5/EC.
Estonian	Käesolevaga kinnitab Mobility California, Inc. seadme XTBT01 vastavust direktiivi 1999/5/EÜ põhinõuetele ja nimetatud direktiivist tulenevatele teistele asjakohastele sätetele.
Hungarian	Alulírott, Mobility California, Inc. nyilatkozom, hogy a XTBT01 megfelel a vonatkozó alapvető követelményeknek és az 1999/5/EC irányelv ebyéb előírásainak.
Slovak	Mobility California, Inc. týmto vyhlasuje, že XTBT01 spĺňa základné požiadavky a všetky príslušné ustanovenia Smernice 1999/5/ES.
Czech	Mobility California, Inc. tímto prohlašuje, že tento XTBT01 je ve shodě se základními požadavky a dalšími příslušnými ustanoveními směrnice 1999/5/ES.
Slovene	Šiuo Mobility California, Inc. deklaruoja, kad šis XTBT01 atitinka esminius reikalavimus ir kitas 1999/5/EB Direktyvos nuostatas.
Lithuanian	Šiuo Mobility California, Inc. deklaruoja, kad šis XTBT01 atitinka esminius reikalavimus ir kitas 1999/5/EB Direktyvos nuostatas.
Latvian	Ar šo Mobility California, Inc. deklarē, ka XTBT01 atbilst Direktīvas 1999/5/EK būtiskajām prasībām un citiem ar to saistītajiem noteikumiem.

France

Some areas of France have a restricted frequency band. The worst case maximum authorized power indoors is:

10 mW for the entire 2.4 GHz band (2400 MHz–2483.5 MHz).

100 mW for frequencies between 2446.5 MHz and 2483.5 MHz (NOTE—Channels 10 through 13 inclusive operate in the band 2446.6 MHz to 2483.5 MHz).

There are few possibilities for outdoor use: On private property or on the private property of public persons, use is subject to a preliminary authorization procedure by the Ministry of Defence, with maximum authorized power of 100 mW in the 2446.5–2483.5 MHz band. Use outdoors on public property is not permitted.

In the departments listed below, for the entire 2.4 GHz band:

Maximum authorized power indoors is 100 mW.

Maximum authorized power outdoors is 10 mW.

Features and Specifications Summary

- Small, foldaway design makes it easy to put in your pocket or briefcase.
- Simple connection compatibility with your Pocket PC device via Bluetooth.
- Full size QWERTY keyboard layout for optimum comfort while typing. Meets ISO/IEC Specification 9995 for full-size keyboards.
- User-programmable shortcut keys for faster access to applications.
- On-screen menu and toolbar navigation via keyboard
- Does not draw power from your Pocket PC device.
- Rubber grip pads prevent keyboard from slipping while typing.
- Detachable device stand.

Dimensions Open:	
Without stand	10.28"W x 0.59"H x 3.86"D <261mm x 15mm x 98mm>
With stand	10.28"W x 2.05"H x 6.97"D <261mm x 52mm x 177mm>
Dimensions Closed:	5.47"W x 0.79"H x 3.86"D <139mm x 20mm x 98mm>
Weight (including batteries):	6.42 ounces <182 grams>
Operating Temperature Range:	32° to 120°F <0° to 49°C>
Typical Battery Life:	
Continuous Operation:	~120 hours
Typical usage:	~3 months
Standby:	~10000 hours

RF Technical specifications

RF output power:	Class 2. Maximum output power is 2.5mW (4 dBm).
Protocol:	Bluetooth specification v. 1.2 compliant. Bluetooth HID Profile v. 1.0 compliant.
Frequency range:	2.4 – 2.4835GHz
Type of Modulation:	GFSK (Gaussian Frequency Shift Keying).
Signal Type:	FHSS (Frequency Hopping Spread Spectrum).