

GE Laser Mouse

Instruction Manual

HO98535



www.jascoproducts.com

TABLE OF CONTENTS

PACKAGE CONTENTS	3
SYSTEM REQUIREMENTS	3
HARDWARE INSTALLATION	3
SOFTWARE INSTALLATION	4
USING THE OFFICE® BUTTON	10
UNINSTALL MOUSE SOFTWARE	14
TROUBLE SHOOTING	16
FIVE YEAR LIMITED WARRANTY	17
FCC STATEMENT	18

Package Contents

- GE Laser Mouse
- Software CD
- Instruction Manual

System Requirements

- Windows® 98 SE or higher
- Available USB Port
- CD-ROM drive

Hardware Installation

Please keep these directions in a safe place.

- 1) Plug the GE Laser Mouse into an available USB port on your computer or GE USB hub. It is not necessary to reboot your computer.
- 2) If prompted, insert your Windows disk and follow the on screen instructions. (This step is not necessary for all operating systems. Your system will prompt you if it is necessary.)
- 3) Move your mouse to test functionality.

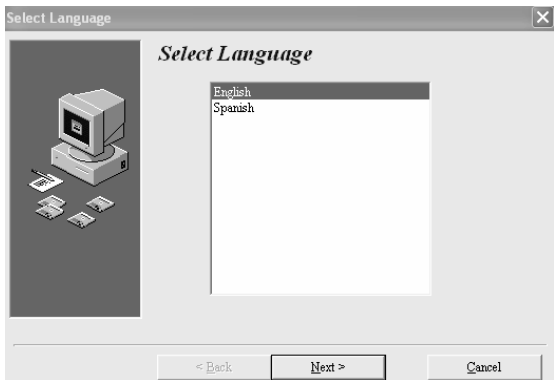
Note: The included software is not necessary for normal use, but does add additional features.

Software Installation

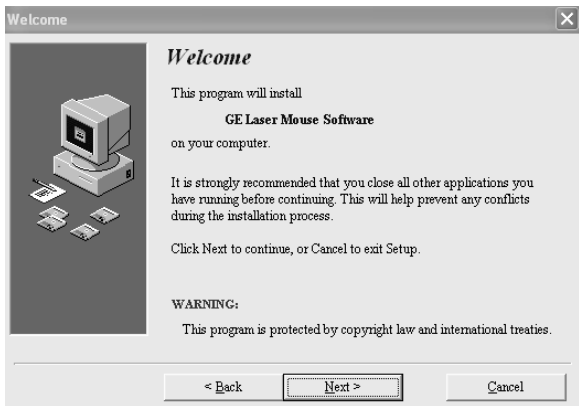
The software that is included gives you instant access to Microsoft® Office® at the touch of a button. It is a very convenient and efficient way to work with Microsoft Office programs. It is always a good idea to back up your system before adding any new software to your computer.

- 1) Uninstall any previously installed third-party mouse software. To do this, please consult the user's manual for your existing software. (In most cases you will use "Add/Remove Programs" in the Control Panel to remove the software. The Control Panel is located in the Start Menu. In some operating systems, the Control Panel is located under "Settings" in the Start Menu.)
- 2) Close all open applications
- 3) Insert the included CD into your CD drive.
- 4) If the CD does not run automatically, open **My Computer**. Double-click on your CD Drive. Double-click on **Setup**. The CD should run.
- 5) Follow the on screen instructions to complete the software installation

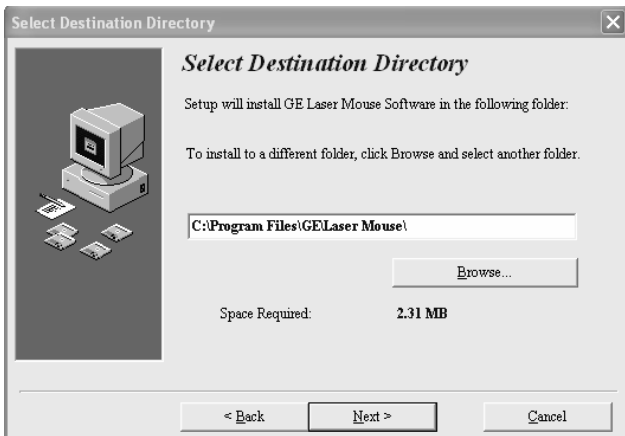
- a) Select your desired language and click **Next**



- b) Click **Next** on the Welcome screen



- c) Click **Next** to select the default destination directory.



- d) Click **Next** to select the default program folder



- e) Click **Next** to start copying files



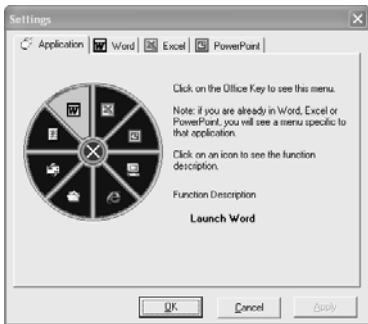
- f) When prompted, click **Finish** to restart your computer



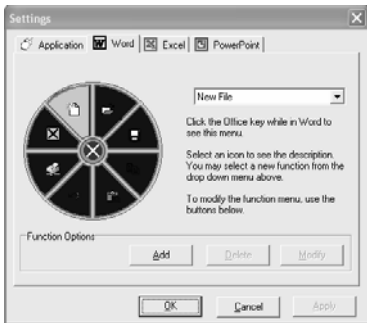
Using the Office® Button

Included with your GE Laser Mouse is additional software that adds efficiency and convenience to your computer use. The following instructions will help you use the features this button offers.

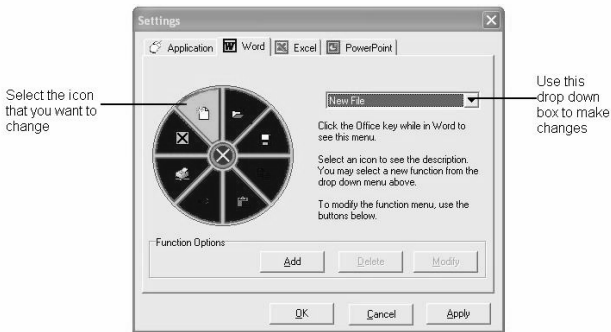
- 1) Press the Office button on top of your GE Laser Mouse next to the scroll wheel at any time to get to the menu shown below. From the options presented here, you can navigate easily to the Internet, various Microsoft Office applications, My Documents and more with the click of a button.



- 2) When you are in Word®, Excel®, PowerPoint®, pressing the Office button will give you a new set of functions specific to that program. For instance, if you press the Office button while in Word, you will see the menu shown below. You can save files, copy, paste, print, and more with the click of a button.



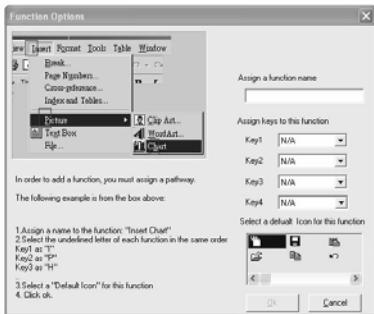
3) Reprogramming the Office button is easy.



It is easy to reprogram the application specific menus. Simply click on the icon on that you want to replace on the left side of the screen and then select the new function from the drop down menu on the right. Once you have made the change, click Apply. Click OK to accept the changes and exit, or Cancel to exit without making any changes.

4) Additional reprogramming:

If you would like to add a function that is not currently listed in the drop down menu shown in step 3, click the “Add” button under Function Options. This will take you to the menu shown below.



First, assign a name to the function you wish to add.

Second, from the menu bar of Word, Excel or Power Point (whichever application you are working with), choose the function you wish to add. Notice the underlined letter of each menu option. Choose the corresponding letter from the drop down box in the correct order. In the example show above, “T” “P” “H” is used to select “Chart” in Excel.

Third, select the icon you would like to use for this function.

Uninstall Mouse Software

You have two choices. Follow either Method 1 or Method 2.

Method 1

- 1) Right-click on the mouse icon in the system tray (lower right corner of the screen) and click **Exit**.
- 2) Close all open applications.
- 3) Open the **Start Menu** by clicking on Start in lower left corner of the screen.
- 4) Click on **Programs** or **All Programs**.
- 5) Click on **GE/Laser mouse/Uninstall GE Laser Mouse Software**. If you cannot locate this here, go on to Method 2.
- 6) Click on **Uninstall GE Laser Mouse Software**.
- 7) Follow the on-screen instructions.
- 8) Click **Next** to continue.
- 9) Click **Finish** to restart your computer.

Method 2

- 1) Right-click on the mouse icon in the system tray (lower right corner of the screen) and click **Exit**.
- 2) Close all open applications.
- 3) Open the **Start Menu** by clicking on Start in lower left corner of the screen.
- 4) Open the **Control Panel** (sometimes located under Settings).
- 5) Open **Add/Remove Programs**
- 6) Click on **GE Laser Mouse Software**.
- 7) Click on **Remove**.
- 8) Follow the on-screen instructions.
- 9) Click **Next** to continue.
- 10) Click **Finish** to restart your computer.

Trouble Shooting

- **The GE Laser Mouse does not work properly**
 - Verify that all connections are secure.
 - Not all laptops support USB mice. Test the mouse on a desktop computer. If this works, contact your laptop dealer.
- **Other application software will not install properly**

This may be due to the GE Laser Mouse Software. Remove the software as described in the previous section. Install the other application. Reinstall the GE Laser Mouse Software.

Five Year Limited Warranty

Jasco Products Company warrants this product to be free from manufacturing defects for a period of five years from the original date of consumer purchase. This warranty is limited to the repair or replacement of this product only and does not extend to consequential or incidental damage to other products that may be used with this unit. This warranty is in lieu of all other warranties express or implied. Some states do not allow limitations on how long an implied warranty lasts or permit the exclusion or limitation of incidental or consequential damages, so the above limitations may not apply to you. This warranty gives you specific rights, and you may also have other rights which vary from state to state. If unit should prove defective within the warranty period, return prepaid with dated proof of purchase to:

Jasco Products Company

311 N.W. 122nd

Oklahoma City, OK 73114

FCC Statement

Notice: Federal Communications Commission (FCC) requirements, Part 15

This equipment has been tested and found to comply with the limits for a class B digital device, pursuant to part 15 of the FCC Rules. These limits are designed to provide reasonable protection against harmful interference in a residential installation. This equipment generates, uses and can radiate radio frequency energy and, if not installed and used in accordance with the instructions, may cause harmful interference to radio communications. However, there is no guarantee that interference will not occur in a particular installation. If this equipment does cause harmful interference to radio or television reception, which can be determined by turning the equipment off and on, the user is encouraged to try to correct the interference by one or more of the following measures:

- Reorient or relocate the receiving antenna.
- Increase the separation between the equipment and receiver.
- Connect the equipment into an outlet on a circuit different from that to which the receiver is connected.
- Consult the dealer or an experienced radio/TV technician for help.

CAUTION: Any changes of modifications not expressly approved by the grantee of this device could void the users authority to operate the equipment. This device complies with Part 15 of the FCC Rules. Operation is subject to the following two conditions: (1) this device may not cause harmful interference, and (2) this device must accept any interference received, including interference that may cause undesired operation.

Distributed for THOMSON INC
by Jasco Products Company
311 N.W. 122nd Street, Oklahoma City, OK 73114
www.jascoproducts.com