

ZTE MF636 USB Modem Quick User Guide



Introduction

The ZTE MF636 USB modem is a multi-mode 3G USB modem, working in HSUPA/HSDPA/UMTS/EDGE/GPRS/GSM networks. With USB interface connecting to a laptop or a desktop PC, it integrates the functionality of a modem and a mobile phone (SMS), and combines mobile communication with Internet perfectly. It supports data and SMS services through the mobile phone network, enabling you to communicate anytime and anywhere.

Packing Checking

- One MF636 modem
- One Quick User Guide
- One USB cable
- One Warranty Card

Specification

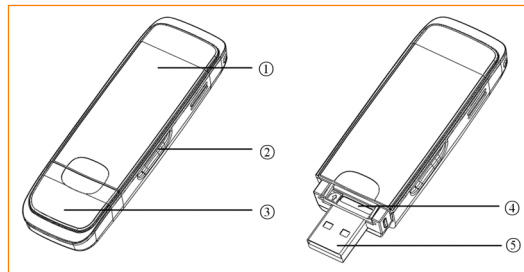
The following table shows the specification of your device.

Interface Type	USB
Systems supported	Supports most types of laptop and desktop PC.
Operating systems supported	Windows 2000, XP SP2, Vista MAC OS
Functions	SMS service, Data service, Applications management, Data concurrent, support MicroSDHC card, etc.
Network Standards.	HSUPA/HSDPA/UMTS/EDGE/GPRS/GSM
Transmission speed (Max)	HSUPA 2.0Mbps UL
	HSDPA 7.2Mbps DL
	WCDMA 384 Kbps

Dimension	69 mm×26.5 mm×12 mm
Weight	About 40g
T-Flash capability	Support up to 4GB MicroSDHC card

Getting to know your device

The following figure shows the appearance of the MF636. It is only for your reference. The actual product may be different.



- ① Indicator
It indicates your modem status.
- ② Memory card slot (MicroSDHC card)
It is where you insert memory card (MicroSDHC card).
- ③ Modem cap
It protects your modem USB port when it is not used.
- ④ SIM/USIM card slot
It is where you insert the subscriber identity module/UMTS subscriber identity module (SIM/USIM) card.
- ⑤ USB connector
Connect your modem to the laptop or desktop computer.

Set up your modem

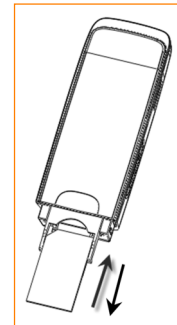
1) Insert the SIM/USIM card into the USB modem

To install SIM/USIM card

- First take down the modem cap, then the USB connector is visible.
- Pull the plastic socket above the USB connector out.

Note: Do not pull the socket rudely for the socket is fixed with the modem. Otherwise the socket will get damaged.

- Insert the SIM/USIM card with the metal contact area facing downwards into the socket.



- Insert the plastic socket into the modem. You can hear a click when the SIM/USIM card locks in place.

To Remove the SIM/USIM card from the USB modem

- First take down the modem cap.
- Pull the plastic socket gently, and you can hear a click when the SIM/USIM card gets unlocked.
- Take out the SIM/USIM card.

2) Install the MicroSDHC card into the USB modem:

Insert the MicroSDHC into the MicroSDHC slot from the side of the modem. The following picture indicates the correct inserting direction.



3) Connect the USB modem to your PC:

- Plug the USB modem into your computer's USB port and make sure that it is tightly inserted.
- The OS automatically detects and recognizes new hardware and starts the installation wizard.

Note: If the system does not launch installation automatically, you can run the installation program in path of My Computer > ZTEMODEM > AutoRun.exe.

Safe Removal from your System

Please close the application software, and then you can pull out the USB Modem safely.

How to use your modem

Various icons are presented to enable quick operation of the following functions:

	Internet	Click "Connect" button to connect to the Internet.
	SMS	Click "New Message" icon, enter recipient's number and content, and then click "Send" to send new message.
	PhoneBook	Click "New" → "New Contact" to add a new contact.
	Settings	Set the configuration for the USB modem.
	Help	Show the help information.

Safety Warning

To the owner

- Using electronic transmitting devices in aircraft, at petrol stations, and in hospitals is prohibited. Please observe and obey all warning signs and switch off your modem in these conditions.
- Operating USB modem may interfere with medical devices like hearing aides and pacemakers.
- Be aware of warning signs in places such as oil refineries or chemical factories where there are explosive gases or explosive products being processed.
- Store the USB modem out of the reach of children. The USB modem may cause injury if used as a toy or may be damaged by rough play or moisture.

Using your USB Modem

- Only use original accessories supplied by the manufacturer. Using unapproved accessories may invalidate your warranty.
- Avoid using the USB modem near or inside metallic structures or establishments that can emit electromagnetic waves.
- The USB Modem is not waterproof. Please keep it dry and store it in a cool place out of direct sunlight.
- Handle the USB modem with care. Don not drop, bend, knock or treat it harshly to avoid damage to the unit.
- There are no user serviceable parts. Dismantling the unit will invalidate the warranty.
- Operating temperature range of 0°C ~ +55°C and humidity 5%~95% are recommended.