



Get started.

All you need to know to get going.

U300



Get Started

***Sprint 3G/4G USB Modem
U300***

www.sprint.com

©2008 Sprint. Sprint and the logo are trademarks of Sprint. Other marks are the property of their respective owners.

Table of Contents

| | |
|---|----------|
| <i>How to Use This Guide</i> | <i>i</i> |
| Section 1: Introducing the Sprint 3G/4G USB Modem. | 1 |
| 1A. Introducing the Sprint 3G/4G | |
| <i>USB Modem</i> | 2 |
| Your Sprint 3G/4G USB Modem..... | 2 |
| System Requirements..... | 3 |
| Package Contents..... | 3 |
| Care and Maintenance | 3 |
| Section 2: Installing and Using the USB Modem | 5 |
| 2A. Installing the Software | 6 |
| Installing the Software and Drivers | 6 |
| 2B. Using Your USB Modem | 8 |
| Launch Software | 8 |
| Activating Your USB Modem..... | 8 |
| Attaching the Y-Extension Cable..... | 9 |

| | |
|---|-----------|
| Using the USB Y-Extension Cable and Laptop Clip..... | 10 |
| Viewing the User Guide..... | 10 |
| Removing the USB Modem..... | 11 |
| Contacting Sprint Customer Service | 11 |
| Troubleshooting..... | 11 |
| Section 3: Technical Specifications, Regulatory and Safety Information, and Warranty | 13 |
| 3A. Technical Specifications | 14 |
| Radio Frequency and Electrical Specifications. | 14 |
| Software Specifications..... | 14 |
| Environmental Specifications | 14 |
| Mechanical Specifications..... | 14 |
| CDMA LED Operation..... | 15 |
| WiMAX LED Operation..... | 15 |
| 3B. Regulatory Information | 16 |
| Trademarks..... | 17 |
| Copyright..... | 17 |
| 3C. Important Safety Information | 18 |

| | |
|---|-----------|
| Important Notice..... | 18 |
| Safety and Hazards..... | 18 |
| 3D. Warranty..... | 19 |
| Manufacturer's Limited One-Year Warranty..... | 19 |

How to Use This Guide

The advantages of Sprint are as clear as each wireless connection you make. With Sprint service, we give you what you really want from a wireless service provider—clear connections, easy-to-understand service plans, and self-servicing options for managing your account. All this is designed to make your life easier and worry-free.

We know you're eager to start using your USB Modem U300 right away, and the sections of this guide are designed to help you do just that.

1 The first section (page 1) gives an overview of the USB Modem U300 package contents.

2 The second section (page 5) guides you through the steps required to install your USB Modem U300 and the Windows drivers and software, describes how to start the software once it is installed, and explains how to use the Y-extension cable and the laptop clip with your device.

3

The third section (page 13) lists the technical specifications, regulatory and important safety information, and warranty information for your USB Modem U300.

Getting More Information About Your Device and Service

This guide describes how to install and start the software. To learn how to use all the features of your USB Modem U300 and software, consult the user guide (see page 10 of this document) or online help.

Section 1

***Introducing the Sprint 3G/4G
USB Modem***



Introducing the Sprint 3G/4G USB Modem

- ◆ *Your Sprint 3G/4G USB Modem (page 2)*
- ◆ *System Requirements (page 3)*
- ◆ *Package Contents (page 3)*
- ◆ *Care and Maintenance (page 3)*

This section introduces your USB Modem U300, and describes what is included with your device.

Your Sprint 3G/4G USB Modem

The USB Modem U300 is a dual-mode wireless USB modem. It is the first USB modem to combine 3G and 4G technology, and is also the first USB modem to offer access to WiMAX service. This device offers the coverage of CDMA, while offering WiMAX capabilities where service is available.

Using this device, and subject to network availability, you can:

- Easily activate your account
- Connect to the Internet and to VPN and corporate networks
- Send and receive large email messages
- Use Sprint Location Services
- Download media content (music, videos and real-time and streaming media)
- Play games online

System Requirements

This Sprint Mobile Broadband USB modem is supported on:

- Windows Vista.
- Windows XP with Service Pack 2 or later.
- Windows 2000 with Service Pack 4 or later.

To install and run the USB modem and the accompanying Sprint SmartViewSM software, you will need:

- a free USB slot.
- a minimum of 256 MB of memory using Windows 2000 and Windows XP.
- a minimum of 1 GB of memory using Windows Vista.
- a minimum of 70 MB of free space on your hard drive.
- a minimum processor speed of 300 MHz for Windows 2000 and Windows XP.
- a minimum processor speed of 800 MHz for Windows Vista.

Note

You can connect your device to any computer (desktop or laptop) with a USB slot.

Package Contents

Your USB Modem U300 package contains the following components:

- Sprint 3G/4G USB Modem U300
- USB extension cable with laptop clip
- Carrying pouch
- Get Started guide (this document)
- CD-ROM including the Sprint SmartView software

Care and Maintenance

As with any electronic device, your USB modem must be handled with care to ensure reliable operation. Follow these guidelines in using and storing the USB modem:

- The USB modem should fit easily into an available USB slot. Forcing the device into a slot may damage the connector pins.

- Protect your USB modem from excessive moisture and heat, and from prolonged exposure to the sun.
- When it is not connected to your computer, store your USB modem in the pouch that came with the modem to avoid dust.
- Remove your USB modem before storing or transporting your computer.
- When inserting or removing your USB modem, always grip from the sides rather than the end, as this prevents damage to the USB modem.
- Do not use your USB modem while driving a vehicle, as it may distract you from properly operating the vehicle.
- Dispose of your USB modem in accordance with EPA guidelines. For more information, visit www.epa.gov/epawaste/partnerships/plugin/cellphone/index.htm.

Section 2

***Installing and Using
the USB Modem***

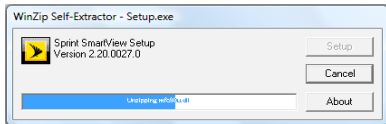


Section 2A

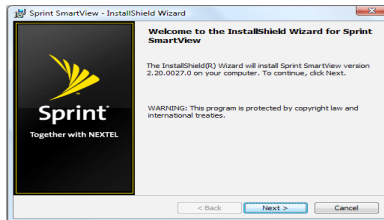
Installing the Software

Installing the Software and Drivers

1. Insert the installation CD into your CD-ROM drive. The CD should launch automatically. Click **Setup** to continue. (If autoplay is disabled, navigate to your CD-ROM drive in Explorer and click **setup.exe**.)

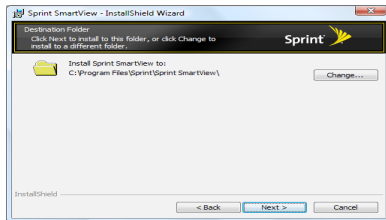


2. In the "Welcome to the InstallShield Wizard for Sprint SmartView" installation window, click **Next**.



3. Read the License Agreement and select "**I accept the terms in the License Agreement**" to agree to the terms. Click **Next**.
4. Select a skin ("New" or "Classic") and click **Next**.

- In the “Destination Folder” window, click **Next** to accept the default installation folder (recommended); or click **Change**, specify a different installation folder, and then click **Next** to continue.
- If a message that you must restart your computer is displayed, click **Yes** to restart your computer. Wait until your computer restarts.
- Proceed to **Activating Your USB Modem**.




- Click **Install** to begin installation.
- When the “InstallShield Wizard Completed” window appears, click **Finish**.

Using Your USB Modem

- ◆ *Launch Software (page 8)*
- ◆ *Activating Your USB Modem (page 8)*
- ◆ *Attaching the Y-Extension Cable (page 9)*
- ◆ *Using the USB Y-Extension Cable and Laptop Clip (page 10)*
- ◆ *Viewing the User Guide (page 10)*
- ◆ *Removing the USB Modem (page 11)*
- ◆ *Contacting Sprint Customer Service (page 11)*
- ◆ *Troubleshooting (page 11)*

Activating Your USB Modem

If your USB modem has not been preactivated or you have not activated it at the time of purchase, you must activate your account and configure the USB modem to use your account. (Normally, your device will automatically complete the activation process the first time you use it.)

1. Gripping both sides of the USB modem, insert it into your computer's USB port. Windows detects the USB modem and installs the drivers for it. This may take a few minutes. Once completed, the system tray may display "Your devices are ready to use" or "Your new hardware is installed and ready to use."
2. Launch the Sprint SmartView by double-clicking the program's icon ().
3. Hands Free activation starts automatically and will be displayed on the Sprint SmartView. After the activation successfully completes, it will automatically connect and welcome you to the Sprint Network.

4. If activation was not successful, a message window is displayed. For instructions on activating your USB modem, see the user guide (see “Viewing the User Guide” on page 10). Use the spaces below to write down important information related to the activation process and your account.

ESN/MEID _____

Activation code _____

Sprint Phone number _____

MSID _____

Account password _____

Sprint User Name _____

Attaching the Y-Extension Cable

Under most operating conditions, your device will operate well when inserted into a single USB slot, and you do not need to install the Y-extension cable. But in some rare instances your USB modem may require more power to operate due to poor signal strength. If your computer displays a warning message that your USB has exceeded the power limit, install the Y-extension cable to supply additional power to the USB modem.

1. Insert the two paired USB connectors into any two USB slots on your computer.
2. Plug the USB modem into the other end of the Y-extension cable.*

(* U.S. Patents pending by C-motech Co. Ltd. Of South Korea)

Using the USB Y-Extension Cable and Laptop Clip

Optionally, you can use the provided USB Y-extension cable and laptop clip. The laptop clip fits on top of your laptop screen and holds your USB modem. This allows you to use your USB modem in crowded spaces.

1. Slide the USB modem into the laptop clip.
2. Guide the USB connector through the opening, exposing the USB connector.
3. Connect the Y-extension cable to the USB modem.



4. Insert both ends of the Y-extension cable in to the USB slot of your laptop. When the USB modem and the cable are properly connected, the LED indicator on the modem will turn green.
5. Place the laptop clip, with the USB modem installed, at the top of your laptop screen as shown in the photo below.



Viewing the User Guide

The user guide provides detailed information on the Sprint SmartView software.

- ▶ On your computer, select **Start > All Programs > Sprint > SmartView > Users Guide**.
- ▶ On your computer, select **Start > My Computer**. Right click on **CD/DVD RW Drive** and select **EXPLORE > UserGuide**.

Removing the USB Modem

1. Disconnect from the Sprint SmartView software if it is running.
2. Remove the USB modem from your computer's USB slot by gripping both sides of the USB modem and pulling straight out.

Contacting Sprint Customer Service

You can reach Sprint Customer Service by:

- Logging on to your account at www.sprint.com.
- Calling us toll-free at **1-866-639-9565**.
- Writing to us at Sprint Customer Service, P.O. Box 8077, London, KY 40742.

Troubleshooting

For a more complete listing of errors and possible solutions, please see the user guide or online Help. You may also call Sprint Customer Service (see above).

1. Ensure that the Sprint SmartView software has been successfully installed on your computer.
2. Ensure that your USB modem has been activated.
3. Ensure that the USB modem is fully plugged into the USB slot.
4. Ensure that the LED light is on; otherwise connect and then reconnect the USB modem.

Section 3

***Technical Specifications,
Regulatory and Safety
Information, and Warranty***



Technical Specifications

Radio Frequency and Electrical Specifications

| | |
|----------------------------|------------------------------------|
| Frequencies | CDMA 800/1900 MHz WiMAX 2.5 GHz |
| Interface type | High-speed USB 2.0 compliant |
| Common air interface | Dual-modem (CDMA+WIMAX) |
| Antenna diversity | Support receive diversity |
| Battery and charger | 3.8V / 50mA |
| DC input operating voltage | +5VDC from USB host port |
| Maximum current @ +5VDC | Under 700mA |

Software Specifications

| | |
|------------|------------------------------|
| OS Support | Windows® 2000, XP, and Vista |
|------------|------------------------------|

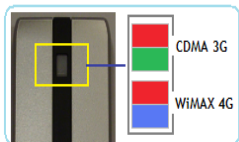
Environmental Specifications

| | |
|-----------------------|---------------------|
| Operating temperature | -20°C to +55°C |
| Storage temperature | -40°C to +70°C |
| Humidity | 95%, non-condensing |

Mechanical Specifications

| | |
|------------------------|--|
| Dimensions (W x H x D) | 33 x 93 x 12.5mm (1.3 x 3.7 x 0.5 in.) |
| Weight | Approx. 43.8g (1.5 oz) |
| Form Factor | USB Series "A" type plug |
| Antenna Type | Internal type for primary & RX diversity |

CDMA LED Operation



| CDMA LED FUNCTIONS | LED Color - CDMA Dual LED | |
|---|---------------------------|---------------|
| | RED | GREEN |
| 3G standby and ready to connect | OFF | Slow Flashing |
| Power on boot or reset 3G out of service or is still acquiring service | ON | ON |
| 3G service not available | ON | OFF |
| 3G service connected | OFF | Fast Flashing |
| 3G service connected and no activity | OFF | ON |
| Not in 3G/4G service area | OFF | OFF |

WiMAX LED Operation

| WiMAX LED FUNCTIONS | LED Color - WiMAX Dual LED | |
|---|----------------------------|---------------------------------------|
| | RED | BLUE |
| 4G standby and ready to connect | OFF | ON |
| 4G out of service or is still acquiring service | ON | OFF |
| 4G error condition or downloading firmware | Flashing | OFF |
| 4G service connected | OFF | Flashing at the rate of data transfer |
| 4G service connected and no activity | OFF | OFF |

Section 3B

Regulatory Information

This device is compliant with Parts 15, 22, 24, and 27 of the FCC Rules. Operation of this device is subject to the following two conditions:

1. This device may cause harmful interference.
2. This device must accept any interference received, including interference that may cause undesirable operation.

FCC guidelines stipulate that the antenna should be 1.5 cm (0.6") or more from user during operation.

FCC ID: TARCMU-300

CAUTION

Unauthorized modifications or changes not expressly approved by Franklin Wireless could void compliance with regulatory rules and thereby your authority to use this equipment.

WARNING (EMI) – United States FCC Information

This equipment has been tested and found to comply with the limits pursuant to Parts 15, 22, 24, and 27 of the FCC Rules. These limits are designed to provide reasonable protection against harmful interference in an appropriate installation. This equipment generates, uses, and can radiate radio frequency energy and, if not installed and used in accordance with the instructions, may cause harmful interference to radio communication. However, there is no guarantee that interference will not occur in a particular installation.

If this equipment does cause harmful interference to radio or television reception, which can be determined by turning the equipment off and on, the user is encouraged to try to correct the interference by one or

more of the following measures:

- Reorient or relocate the receiving antenna.
- Increase the separation between the equipment and receiver.
- Connect the equipment into an outlet on a circuit different from that to which the receiver is connected.
- Consult the dealer or an experienced radio/TV technician for help.

Trademarks

Sprint and the logo are trademarks of Sprint. Other marks are the property of their respective owners.

Windows® is a registered trademark of Microsoft Corporation.

Copyright

©2008 Sprint. Sprint and the logo are trademarks of Sprint. Other marks are the property of their respective owners.

Important Safety Information

Important Notice

Because of the nature of wireless communications, transmission and reception of data can never be guaranteed. Data may be delayed, corrupted (i.e., have errors), or be totally lost. Although significant delays or losses of data are rare when wireless devices such as the Sprint 3G/4G USB Modem U300 are used in a normal manner with a well-constructed network, they should not be used in situations where failure to transmit or receive data could result in damage of any kind to the user or any other party, including but not limited to personal injury, death, or loss of property. Franklin Wireless, Corp. accepts no responsibility for damages of any kind resulting from delays or errors in data transmitted or received using the Sprint 3G/4G USB Modem U300, or for failure of Sprint 3G/4G USB Modem U300 to transmit or receive such data.

Safety and Hazards

Do not operate modem in areas where blasting is in progress, where explosive atmospheres may be present, near medical equipment, life support equipment, or any equipment which may be susceptible to any form of radio interference. In such areas, the Sprint 3G/4G USB Modem U300 must be removed from your computer. It can transmit signals that could interfere with this equipment. Do not operate the Sprint 3G/4G USB Modem U300 in any aircraft, whether the aircraft is on the ground or in flight. In aircraft, the Sprint 3G/4G USB Modem U300 must be removed from your computer. When operating, it can transmit signals that could interfere with various onboard systems. The driver or operator of any vehicle should not operate the Sprint 3G/4G USB Modem U300 while in control of a vehicle. Doing so will detract from the driver or operator's control and operation of that vehicle. In some jurisdictions, operating such communication devices while in control of a vehicle is an offense.

Section 3D

Warranty

Manufacturer's Limited One-Year Warranty

Franklin Wireless (the company) warrants to original retail purchaser of this device, that should product during normal consumer usage conditions, be proven defective in material or any part thereof, during normal consumer usage conditions, be defective in material or workmanship that results in product failure within the first twelve (12) month period from the date of purchase, such defects will be repaired or replaced (with new or refurbished) product at the Company's discretion, without charge for parts and labor directly related to the defect(s). This warranty extends to consumers who purchase the product in the United States or Canada and it's not transferable or assignable. This warranty does not apply to:

- (a) Product subject to abnormal use or conditions, accident, mishandling, neglect, unauthorized alteration, misuse, improper installation or repair or improper storage;
- (b) Products whose mechanical serial number or electronic serial number has been removed, altered, or defaced;
- (c) Damage from exposure to moisture, humidity, excessive temperature or extreme environment conditions;
- (d) Damage resulting from connection to, or use of any accessory or other product not approved or authorized by the company;
- (e) Defects in appearance, cosmetic, decorative or structural items such as framing and non-operative parts;
- (f) Product damaged from external causes such as fire, flooding, dirt, sand, weather conditions, battery leakage, blown fuse, theft or improper usage of any electrical source.

The Company disclaims liability for removal or reinstallation of the product, for geographic coverage, for inadequate signal reception by the antenna or for communications range or operation of the cellular system as a whole.

When sending your wireless device to Franklin Wireless' authorized distributors for repair or service, please note that any personal data or software stored on the device may be inadvertently erased or altered. Therefore, we strongly recommend you make a back up copy of all data and software contained on your device before submitting it for repair or service. This includes all contact lists, downloads (i.e. third-party software applications, games and graphics) and any other data added to your device. Franklin Wireless is not responsible for and does not guarantee restoration of any third-party software, personal information or memory data contained in, stored on, or integrated with any wireless device, whether under warranty or not, returned to Franklin Wireless' authorized distributors for repair or service. To obtain repairs or replacement within the terms of this Warranty, the product should be delivered with proof of Warranty coverage (e.g. dated bill of sale), the consumer's return address, and daytime phone number and/or fax

number and complete description of the problem, transportation prepaid, to the Company at the address shown below or to the place of purchase for repair or replacement processing. In addition, for reference to an authorized Warranty station in your area, please call (800) 959-3558 in the United States.

The extent of the company's liability under this warranty is limited to the repair or replacement provided above and, in no event, shall the company's liability exceed the purchase price paid by purchaser for the product.

Any implied warranties, including any implied warranty of merchant ability or fitness for a particular purpose, shall be limited to the duration of this written warranty. Any action for breach of any warranty must be brought within a period of 18 months from date of original purchase in no case shall the company be liable for a special consequential or incidental damages for breach of this or any other warranty, express or implied, whatsoever. The company shall not be liable for the delay in pending service under this warranty or loss of use during the time the product is being repaired or replaced.

No person or representative is authorized to assume for the Company any liability other than expressed herein in connection with the sale of this product. Some states or provinces do not allow limitations on how long an implied warranty lasts on the exclusion or limitation of incidental or consequential damage so the above limitation or exclusions may not apply to you. This Warranty gives you specific legal rights, and you may also have other rights, which vary from state to state or province to province.

Franklin's Authorized Service Center Address:
5440 Morehouse Drive,
San Diego, CA 92121

