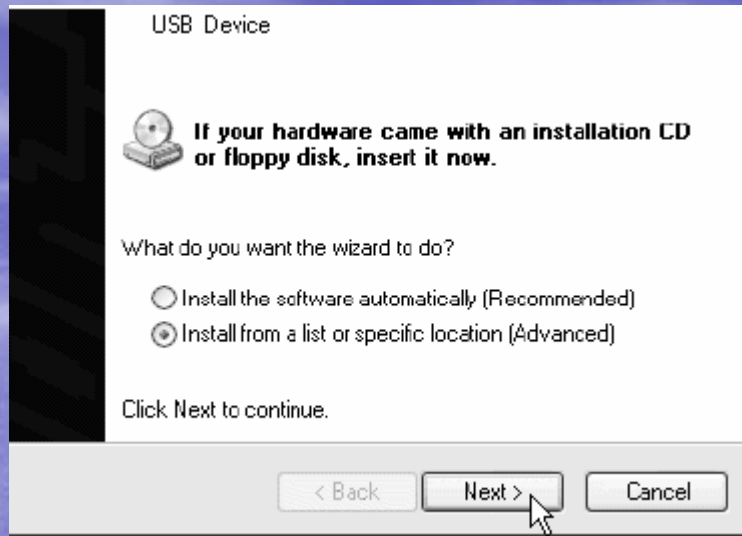




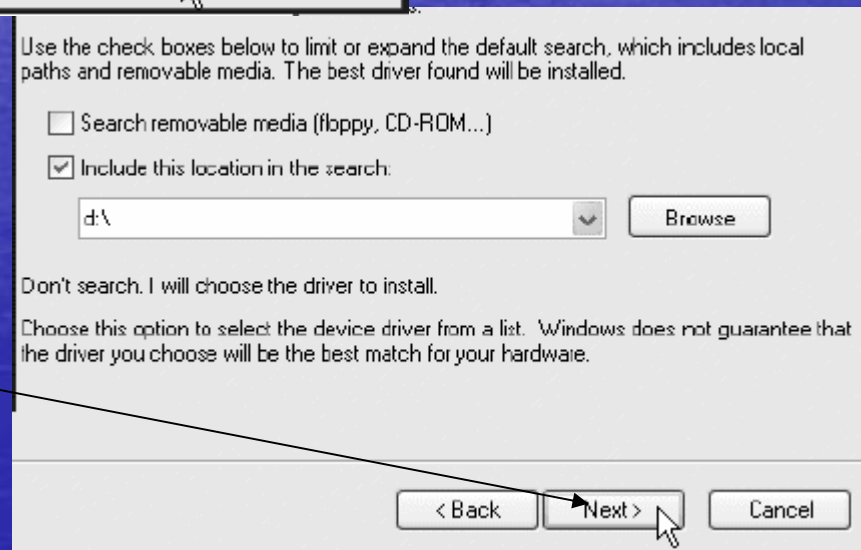
# ***Aztech 206U Modem Installation***

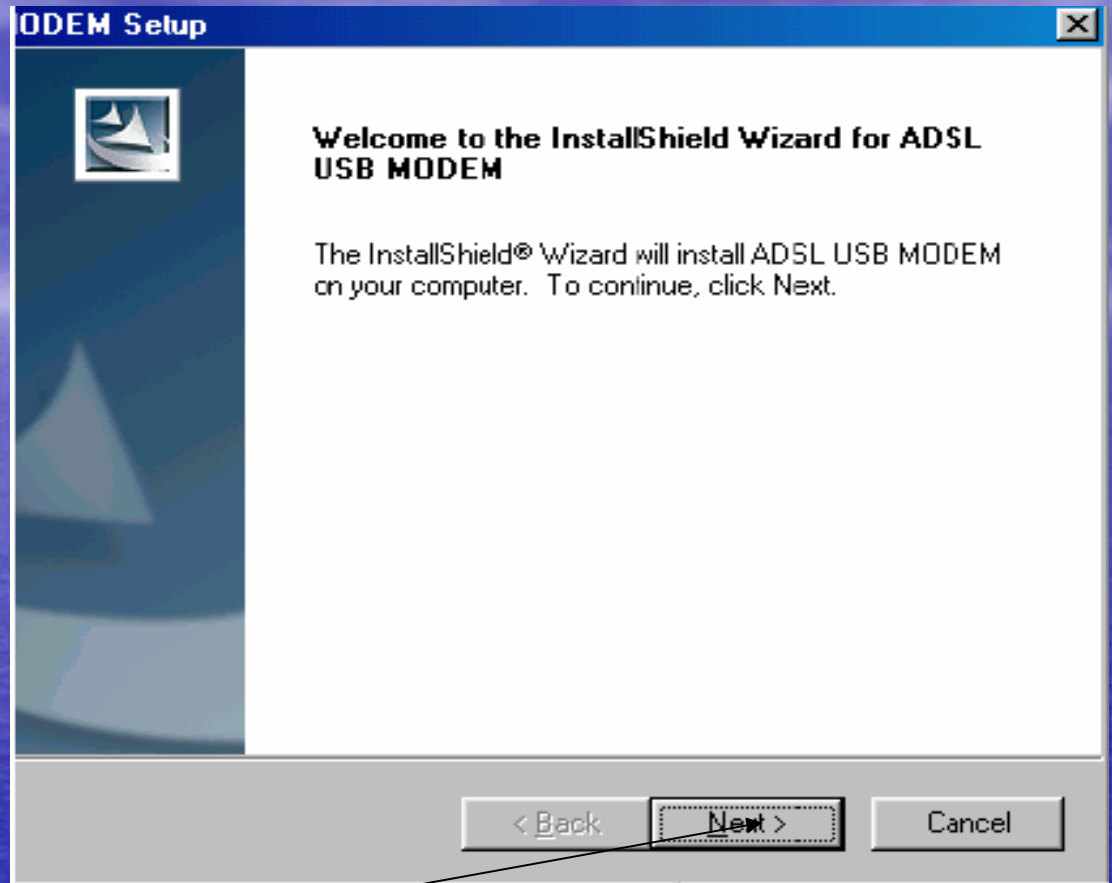
***Prepare by  
Broadband Multimedia Sdn Bhd***



**1. Plug in modem windows will auto detect**

**2. Put in CD , choose CD location, click next to continue**





*Click next to continue*

Please check only ONE RFC you want to instal:

- RFC1483 BRIDGED
- RFC1483 ROUTED
- RFC2364(PPP Over ATM)
- RFC2516(PPP Over Ethernet)

***Please choose RFC2364(PPP Over ATM)***

**ADSL USB MODEM Setup**

Usb ADSL Lan Adapter Setup

Enter the VPI and VCI parameters given from your ADSL service provider

VPI

VCI

**1. Key In VPI:0, VCI :35**

Installed

< Back    Next >    Cancel

**For RFC 2516 (PPPOE)**

**ADSL USB MODEM Setup**

**Setup Type**  
Choose the setup type that best suits your needs.

Please choose the ENCAPSULATION you want to install:

RFC2516(PPPOE) LLC SNAP

RFC2516(PPPOE) VCMUX

**1. Choose RFC2516(PPPOE)**

Yes, I want to restart my computer now.

No, I will restart my computer later.

Remove any disks from their drives, and then click Finish to complete setup.

**2. Restart your PC**

< Back   Finish   Cancel

**USB Warning**

! If your USB is not connected, please connect it now.

Installation in progress, please wait!

OK

**3. Plug out modem before restart**

**1. Click the icon ready connect to internet**

**Connect Broadband**

User name: xxx@streamyx

Password: [To change the saved password, click here]

Save this user name and password for the following users:

Me only

Anyone who uses this computer

Connect Cancel Properties Help

**2. Key in User name and password**

**User Name:xxx@streamyx**

**Password:tmnet123**



Please contact

1-300-88-9515

activate your account now