



## **6801 MEAT SAW TECHNICAL MANUAL (208-230/60/3)**

**SPECIFICATION SHEET**

**INSTALLATION INSTRUCTIONS**

**OPERATION INSTRUCTIONS**

**CLEANING INSTRUCTIONS**

**MAINTENANCE INSTRUCTIONS**

**TROUBLE SHOOTING INSTRUCTIONS**

**WIRING DIAGRAMS**

**CATALOG OF REPLACEMENT PARTS**

**SMARTPARTS™ USER GUIDE**

**RECOMMENDED SPARE PARTS LIST**

## Need other Hobart Services?



- [Warranty Registration](#)
- [Delivery and Installation](#)
- [Preventive Maintenance](#)
- [Hobart Service Contracts](#)
- [Extended Warranty Contracts](#)
- [Parts and Accessories](#)
- [Specialty Programs](#)
- [Water Treatment Programs](#)



**HOBART**701 S Ridge Avenue, Troy, OH 45374  
1-888-4HOBART • www.hobartcorp.com**6801 SERIES  
MEAT SAW****HOBART****STANDARD FEATURES**

- 3 H.P. Motor
- Direct Gear Drive Transmission
- Tri-Rail Carriage
- Open Frame Stainless Steel Construction
- Center Crown Pulley
- Removable Double Flanged Pulleys
- Split Rear Table
- Direction Grain Stainless Steel
- Pivoted Automatic Tension
- Adjustable Legs
- Stainless Steel Top Cover

**MODEL**

- 6801 Series – Vertical Meat Saw

Specifications, Details and Dimensions on Inside and Back.

**OPTIONS**

- Maximum Security Prison Package

**6801 SERIES MEAT SAW**

# 6801 SERIES MEAT SAW

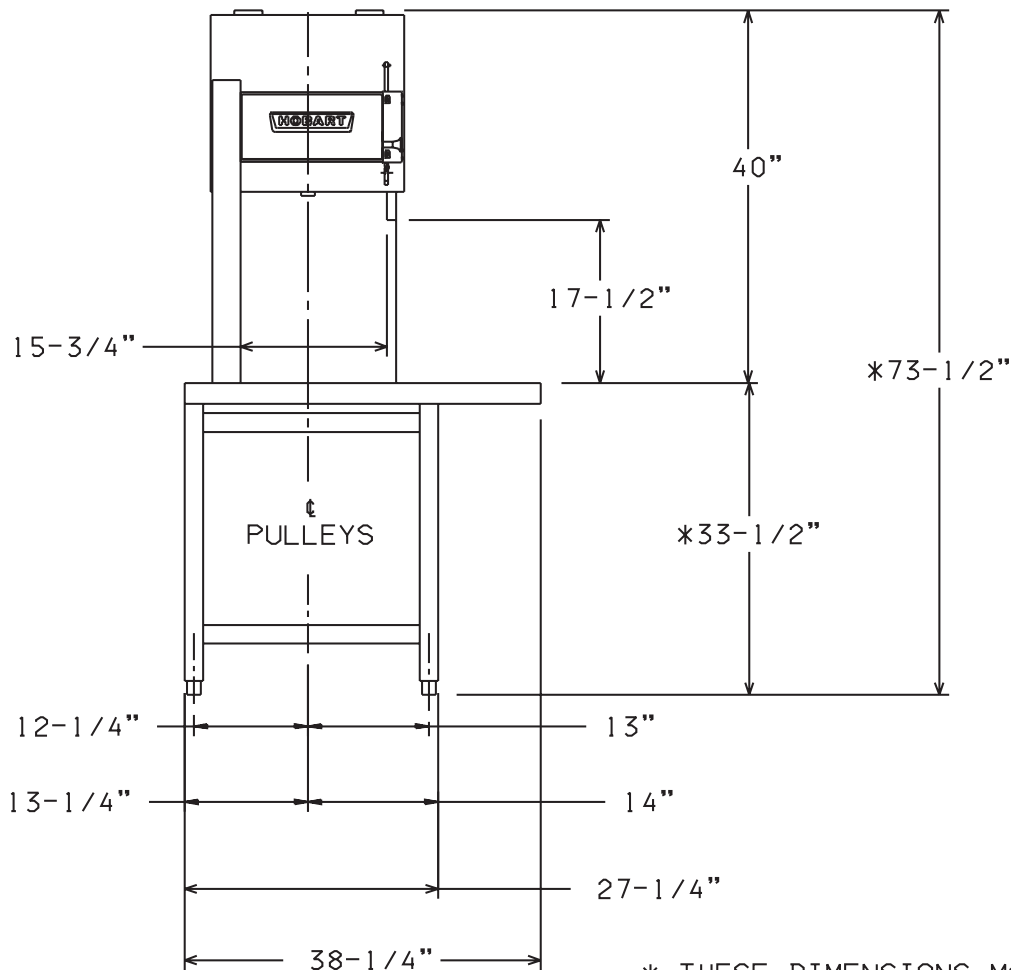
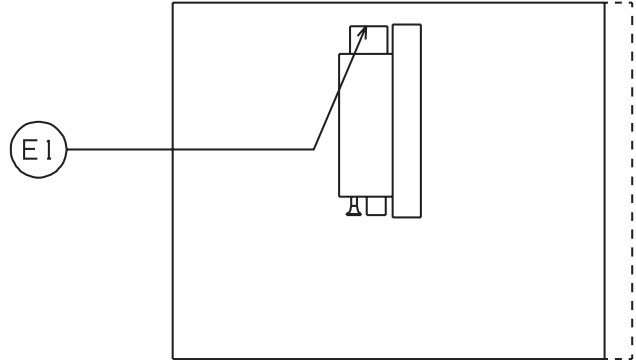


701 S Ridge Avenue, Troy, OH 45374  
1-888-4HOBART • www.hobartcorp.com

MACHINE WILL PASS THROUGH A 33" OPENING  
WITH CARRIAGE AND CARRIAGE SUPPORTS  
REMOVED.

NET WEIGHT: 430 LBS.  
SHIPPING WEIGHT: APPROX. 570 LBS.

LEGEND:  
E1-ELECTRICAL CONNECTION



\* THESE DIMENSIONS MAY INCREASE AS  
MUCH AS 1" DEPENDING ON LEG  
ADJUSTMENT.



701 S Ridge Avenue, Troy, OH 45374  
 1-888-4HOBART • www.hobartcorp.com

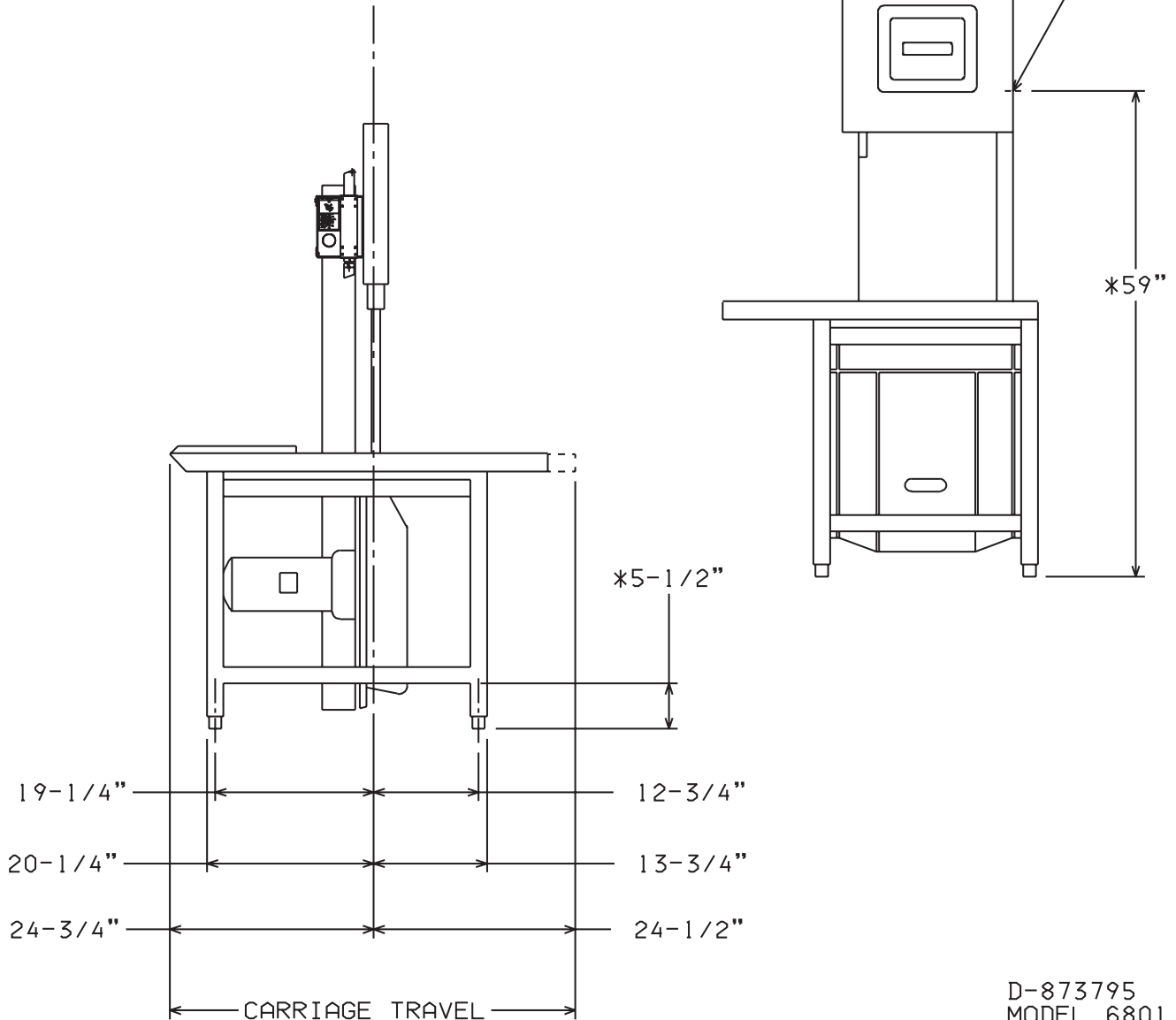
# 6801 SERIES MEAT SAW

## WARNING

ELECTRICAL AND GROUNDING CONNECTIONS MUST COMPLY WITH APPLICABLE PORTIONS OF THE NATIONAL ELECTRICAL CODE AND/OR OTHER LOCAL ELECTRICAL CODES. CONNECTION OF CONDUIT TO BASE MUST BE MADE USING A WATERPROOF FITTING OF PROPER SIZE AND DESIGN

Ⓒ

1-1/8" DIA HOLE LOCATED AS SHOWN ON BACK OF COLUMN FOR CABLE OUTLET



D-873795  
MODEL 6801

# 6801 SERIES MEAT SAW



701 S Ridge Avenue, Troy, OH 45374  
1-888-4HOBART • www.hobartcorp.com

## SOLUTIONS / BENEFITS

### 3 H.P. Motor

Durability and reliability

- Totally enclosed
- Flange mounted with grease-packed ball bearings
- Water resistant

### Direct Gear Drive Transmission

Performance

- No belts to replace, slip, adjust or break
- Helical gear reduction
- Blade speed; 4150 fpm

### Safety Features

Safety

- Upper and lower pulleys are completely enclosed
- Accessible blade is guarded above and below the cutting zone
- Pusher plate provided to eliminate handling items too close to blade

### Cleanability

Labor savings, improved sanitation

- Total open construction and complete hose down capabilities
- Lower "lift-out" guide assembly has stainless steel blade guide
- Built-in tungsten carbide blade back-up block assembly is removable
- Enclosed bone dust system, with large lower scrap pan, keeps dust where it belongs
- No tools needed for part removal, including both pulleys, blade cleaners and guide assemblies
- Exclusive two-piece table and open frame design make sink washing or high pressure hose-down a cinch

### Pivoted Automatic Tension

Productivity, ease of use

- Entire motor, transmission and lower pulley assembly is pivot mounted
- Blade tension control accessible just below right table
- Simple adjustment allows for broad blade length tolerance

### User Friendly Controls

Ease of use

- Single pull-to-start, push-to-stop switch
- Heater provided with each control to prevent moisture condensation on electrical components

### Integrated Pulley Design

Durability, reliability

- Bright tinned cast iron upper and lower blade pulleys are easily removed
- True-running of the blade is assured by precision pulley balance
- Blade retaining double flanges and center crown give long life without loss of blade integrity

### Movable Carriage Tray

Convenience, labor savings

- 16" D x 24 $\frac{1}{4}$ " W
- Stainless steel, turned down edges provide reinforcements for rigidity
- Stepped front edge makes movement of carriage fast and easy
- Stainless steel ball bearings, mounted on underside of carriage
- Tri-rail carriage support assures stability and easy travel, even when operator leans heavily on carriage
- Carriage lock is provided as standard equipment

### Rugged Gauge Plate

Durability, ease of operation

- Stainless steel plate on aluminum cast frame, 6 $\frac{3}{4}$ " x 16 $\frac{3}{4}$ "
- Adjustment gives quick, positive regulation of cut thickness with precision
- Easily disengaged for adjustment
- Exclusive design of gauge plate end permits quick removal of cuts for stacking

### Stationary Cutting Table

Convenience, heavy duty

- Two piece, 21 $\frac{1}{2}$ " x 39 $\frac{5}{8}$ ", heavy stainless steel with turned down edges for rigidity
- Fully supported for heavy duty use
- Provides extensive stacking space and easy breakdown for cleaning

## SPECIFICATIONS

**Motor:** 3 H.P.

**Electrical:** Available in 230/60/1, 200-230/60/3, 460/60/3. Also available in 220/50/3, 380-415/50/60/3, not submitted for U L listing.

**Switch:** Single pull-to-start, push-to-stop switch

**Standard Leg Height:** 2" (Std.) 1 $\frac{3}{4}$ " to 2 $\frac{1}{4}$ "

**Optional Leg Height:** 4" 3 $\frac{3}{4}$ " to 4 $\frac{1}{4}$ "

**Saw Blade:**  $\frac{5}{8}$ " wide x 142" long

**Capacity:** Cutting clearance is 17 $\frac{1}{2}$ " H x 15 $\frac{3}{4}$ " W

**Weight:** Net 430 lbs. Shipping: approximately 570 lbs.

As continued product improvement is a policy of Hobart, specifications are subject to change without notice.

# INSTRUCTIONS

## MODEL 6801 MEAT SAW

### MODEL

6801 ML-134094

*Previous models covered by this manual:*

6801 ML-104948



701 S. RIDGE AVENUE  
TROY, OHIO 45374-0001

937 332-3000

[www.hobartcorp.com](http://www.hobartcorp.com)

FORM 34405 Rev. B (Sept. 2001)

# Installation, Operation, and Care of MODEL 6801 MEAT SAW

## SAVE THESE INSTRUCTIONS

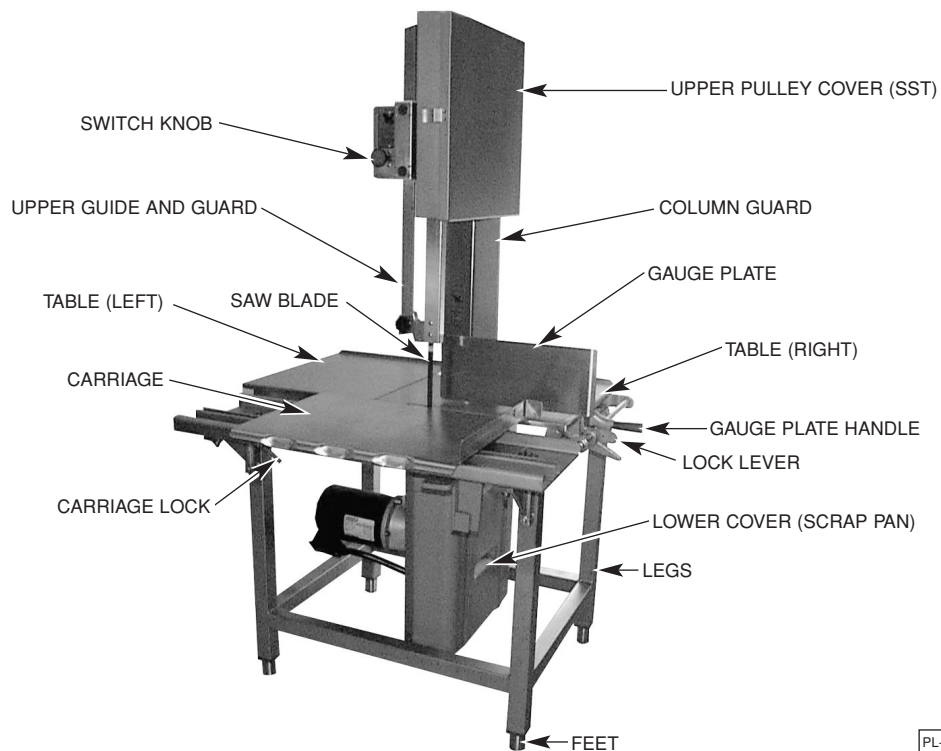
### GENERAL

The 6801 Meat Saw is rugged, durable, and easy to clean. The saw is equipped with a water resistant 3 HP electric motor and direct gear drive transmission. The carriage (Fig.1) has stainless steel ball bearings providing easy travel and dependability. The shaped front edge of the carriage is comfortable to the operator's body even when leaned on during movement. The carriage lock is standard.

Table, carriage, pulleys, guides, and wiper assemblies can be quickly removed without tools for ease of cleaning. Moving parts are enclosed but accessible. The blade is guarded above and below the cutting zone. The pusher plate is provided to eliminate the need of handling items close to the blade; it can ride on the right "flanged-end" of the carriage so you keep your hands away from the cutting edge of the blade.

For electrical specifications above 250 volts, a transformer provides a 115 volt control circuit voltage. Thermal overload protection is an option.

One long-life blade is furnished with each saw as standard equipment. This blade cannot be resharpened; replacement blades are available through your local Hobart Service Office.





# INSTALLATION

## UNPACKING AND ASSEMBLY

Immediately after unpacking the meat saw, check for possible shipping damage. If the meat saw is found to be damaged, save the packaging material and contact the carrier within 15 days of delivery.

Prior to installation, test the electrical service to make sure it agrees with the specifications on the machine data plate located on the column.

Packed in a packet attached to the table compartment are the pusher plate and the gauge plate handle. Place the pusher plate in its storage location under the carriage support (Fig. 2). Assemble the gauge plate handle to the gauge plate support by screwing the stud into the threaded hole (Fig. 3).

## LEVELING

Place the saw in its operating location. Using a spirit level, level the meat saw front-to-back and side-to-side by turning the threaded feet in or out.

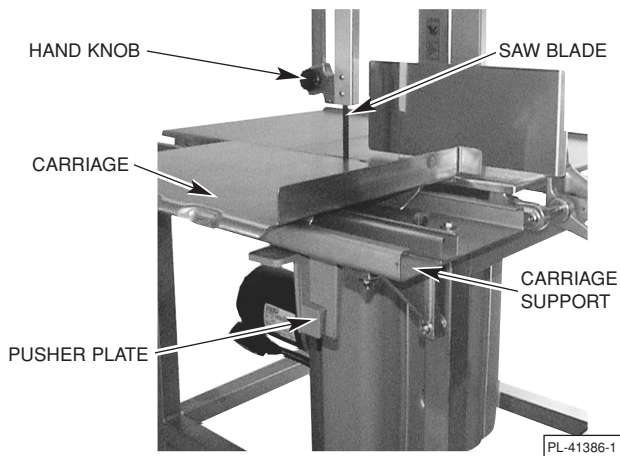


Fig. 2

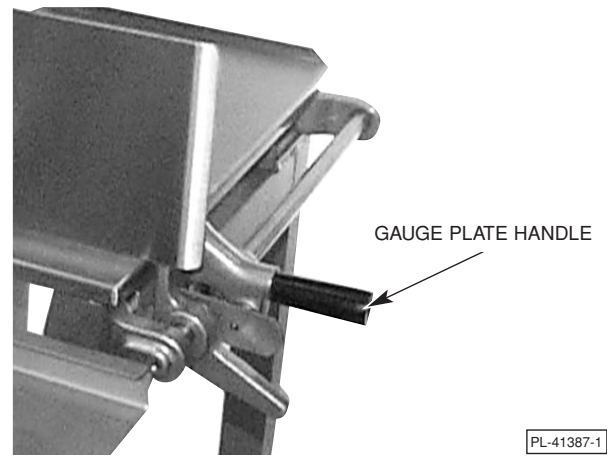


Fig. 3

**WARNING:** DISCONNECT ELECTRICAL POWER AND PLACE A TAG AT THE DISCONNECT SWITCH INDICATING THAT YOU ARE WORKING ON THE CIRCUIT.

## SAW BLADE

The saw blade must be installed so the teeth point to the right and down (Fig. 4).

## UPPER GUIDE AND GUARD ASSEMBLY

When the saw is off, the hand knob (Fig. 4) can be used to raise or lower the upper guide and guard assembly so the cutting zone is only as high as necessary for the piece being cut. The hand knob is not loosened during raising or lowering — it should remain tightly secure.

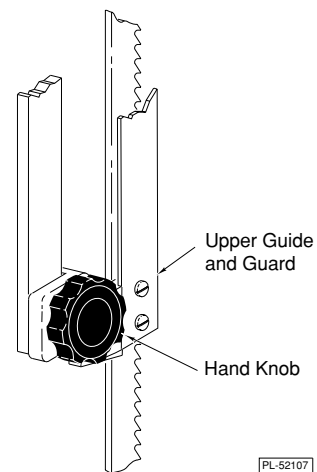


Fig. 4

## UPPER PULLEY COVER (Plastic)

The plastic upper pulley cover (Fig. 5) should be installed on the two hinge-retainers at the top and securely latched at the bottom during use. To remove the plastic upper pulley cover for cleaning, release the latch at the bottom and remove from the hinge-retainers at the top.

## UPPER PULLEY COVER (Stainless Steel)

The stainless steel upper pulley cover (Fig. 1) should be installed on the two hinge pins of the stainless steel upper pulley baffle and securely latched during saw use. To remove the stainless steel upper pulley cover for cleaning, unlatch and open the stainless steel upper pulley cover; then, lift straight up off the hinge pins.

## LOWER COVER (Scrap Pan)

During use, the lower cover (Fig. 5) acts as a scrap pan, accumulating bone dust and debris from the blade scrapers and pulley wiper that are located on the lower panel (Fig. 6). To remove the lower cover (scrap pan) for cleaning, release the clip at the top; pull out and lift the lower cover from the groove at the bottom of the lower panel.

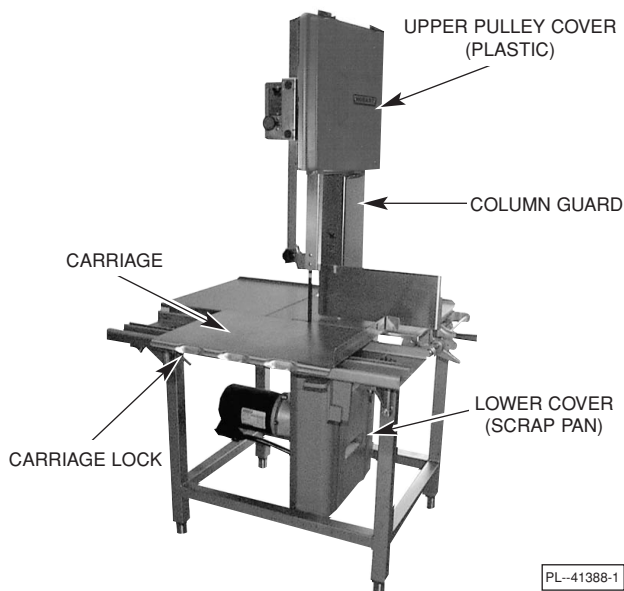


Fig. 5

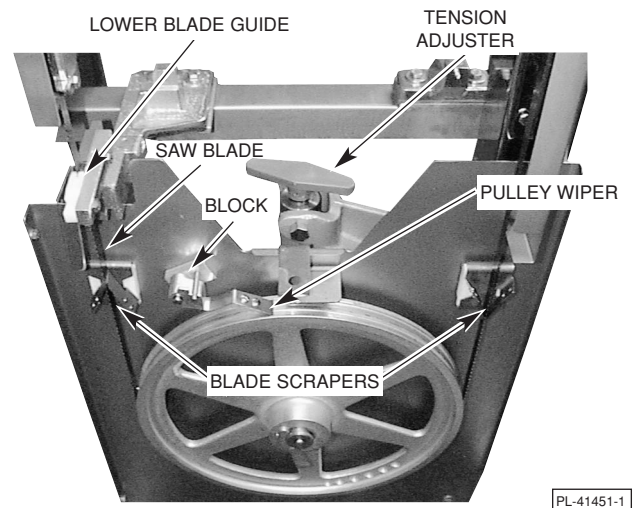


Fig. 6

## BLADE SCRAPERS

Two blade scrapers wipe the blade during sawing to accumulate bone dust and debris inside the lower cover (scrap pan). The front scraper points up and the rear scraper points down (Fig. 6). After the blade is removed, the scrapers can slide off their mounting blocks for cleaning.

## PULLEY WIPER

The pulley wiper (Fig. 6) scrapes bone dust or debris from the lower pulley during use. The pulley wiper can be removed for cleaning by springing the wiper up and sliding it off the pins.

## LOWER PULLEY

The lower pulley is assembled on the lower pulley shaft. The latch on the lower pulley should be seated in the groove of the pulley shaft (Fig. 7). The lower pulley can be removed after the blade has first been loosened and removed and the lower pulley latch is moved out of the groove of the lower pulley shaft.

## UPPER PULLEY

The upper pulley is assembled on the upper pulley shaft. The round retainer on the upper pulley shaft should be positioned out-of-center when latched (Fig. 8). The upper pulley can be removed after the blade has first been loosened and removed and the round retainer is moved to the center of the upper pulley shaft.

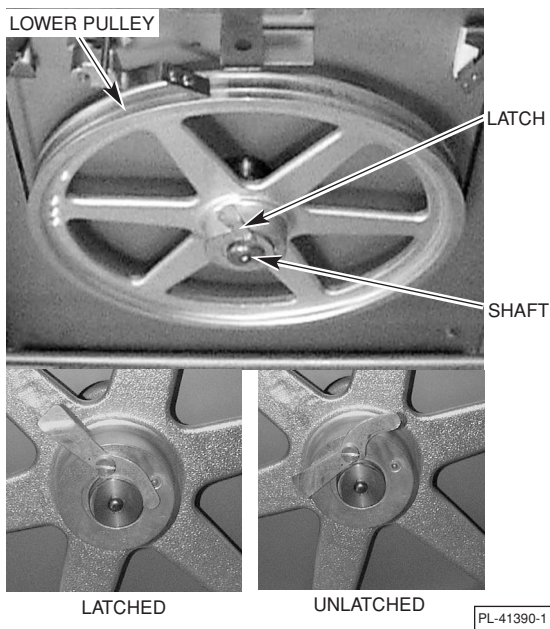


Fig. 7

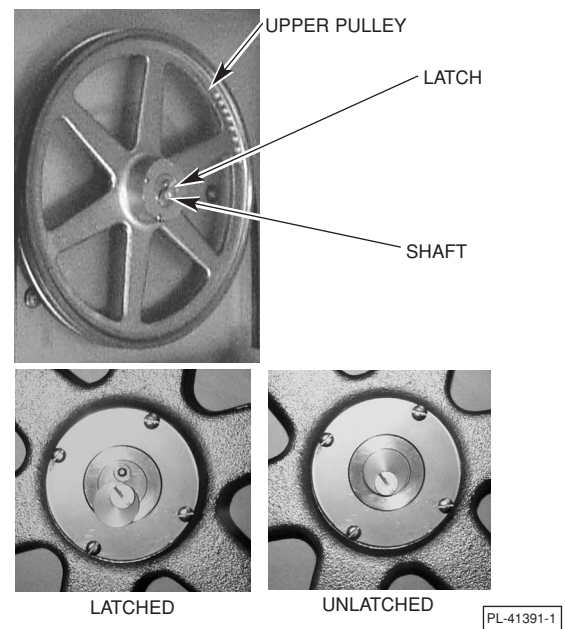


Fig. 8

## COLUMN GUARD

The column guard (Fig. 5) covers the return loop of the moving blade and must always be in place during sawing. To remove the column guard for cleaning or blade change, first remove the right table and the upper pulley cover. You may want to remove the lower cover (scrap pan) as well. Then, lift the column guard up to free it from the two shoulder-screw heads on the column that it hangs from.

## TABLES — RIGHT and LEFT

During use, the right and left tables (Fig. 1) are secured underneath by pins and clamps. To remove the tables for cleaning: Raise the gauge plate to its vertical position; lift the right side of the right table up; and, remove the table from the two pins. After the right table is removed, the left table can be removed: Lift the left side of the left table up; and, shift it to the right to free it from the two pins.

## SCRAP TRAY

During use, the scrap tray should be installed between the left-hand table and the carriage support (Fig. 9). The scrap tray slides into place, resting on the frame between the carriage support and table. The angled side of the scrap tray is located nearest the blade.

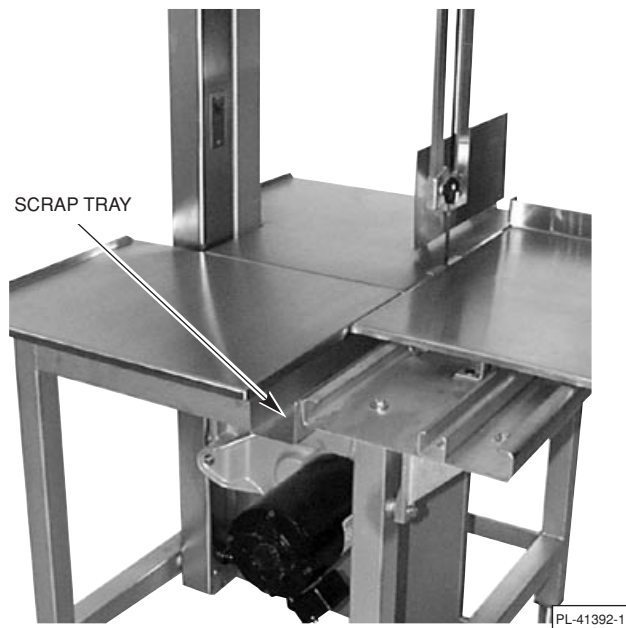


Fig. 9

## CARRIAGE

In use, the carriage can roll back and forth between the left carriage stop (Fig. 10) and the right carriage stop, assuming the spring loaded carriage lock (Fig. 5) has not locked the carriage in a stationary position.

To remove the carriage, turn either of the carriage stops 90 degrees so the bumper is toward the rear (Fig. 11). Roll the carriage off either end while lifting it free of the carriage support structure (Fig. 10).

To reinstall the carriage, hold the carriage so the bearings (underneath) are aligned with the carriage support structure. Roll the carriage into place. Return the carriage stops so the carriage is stopped at both ends.

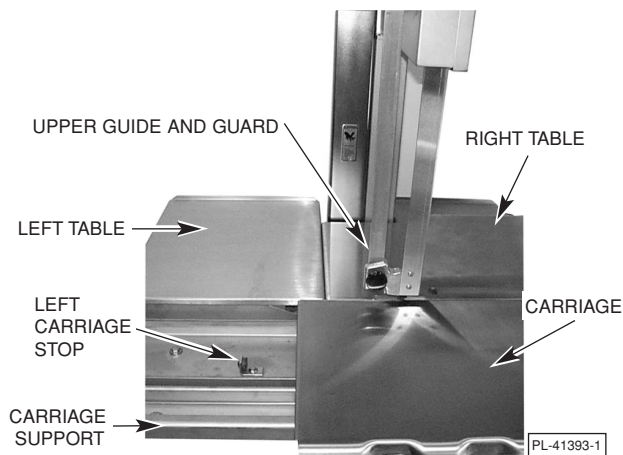


Fig. 10

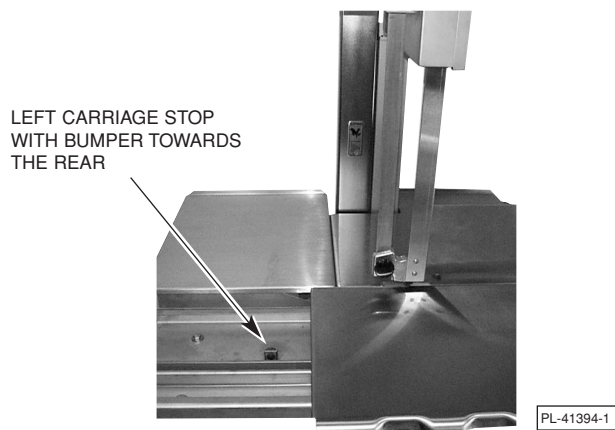


Fig. 11

## LOWER BLADE GUIDE

The lower blade guide assembly fits in the lower guide holder (Fig. 12). The blade fits in the slots of both the steel saw blade guide and the plastic guide. When the right table is removed and the plastic guide is hinged up, the lower blade guide assembly can be removed for cleaning by lifting it out of the lower guide holder.

The steel saw blade guide is available in various widths depending on the blade being used. Contact Service to change the steel saw blade guide for other blade widths.

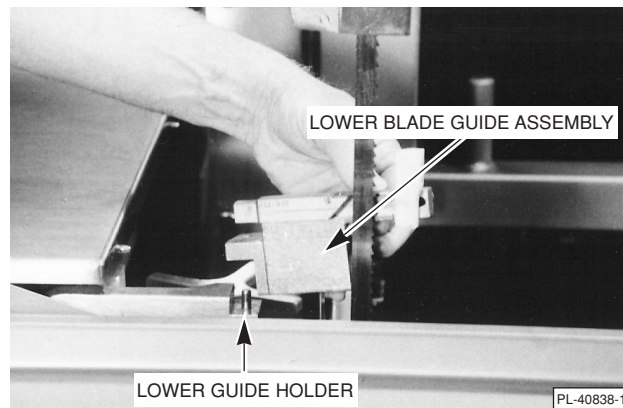


Fig. 12

## REMOVING THE BLADE

Remove the upper and lower pulley covers. Raise the gauge plate to its vertical position. Remove the right table by lifting its right side and sliding the table to the right to free it from the locating pins. Remove the column guard. Turn the tension adjuster counterclockwise until it stops (this will release tension on the blade by raising the lower pulley). Raise the plastic blade guide on the lower blade guide assembly and release the blade from the upper and lower blade guides. Free the blade from the blade scrapers in the lower pulley area and release it from the pulleys. Remove the blade.

Make sure the pulleys are properly installed and the pulleys are latched (Figs. 7 & 8). Install the new blade with the teeth pointing to the right and down as you face the front of the saw. The blade must fit between the V's on the blade scrapers, in the slots of the upper and lower blade guides, and must not touch any of the pulley flanges. The lower blade guide must be installed after the blade is installed. When the blade is in position, see **BLADE TENSION**, below, to adjust the tension properly. Refer to **LOWER BLADE GUIDE**, above, if the blade width of the new blade is different than the old. Reinstall any removed parts.

## BLADE TENSION

After the blade has been installed, set the blade tension by turning the tension adjuster clockwise until it stops.

## ELECTRICAL CONNECTIONS

**WARNING:** ELECTRICAL AND GROUNDING CONNECTIONS MUST COMPLY WITH THE APPLICABLE PORTIONS OF THE NATIONAL ELECTRICAL CODE AND/OR OTHER LOCAL ELECTRICAL CODES.

**WARNING:** DISCONNECT ELECTRICAL POWER SUPPLY AND PLACE A TAG AT THE DISCONNECT SWITCH INDICATING THE CIRCUIT IS BEING WORKED ON.

### ELECTRICAL DATA

Model	Volts / Hertz / Phase	Fuse		Circuit Breaker	
		Minimum Circuit Ampacity AMPS	Maximum Fuse Size AMPS	Minimum Circuit Ampacity AMPS	Maximum Circuit Breaker Size AMPS
6801	230 / 60 / 1	25	25	30	30
	200 - 230 / 60 / 3	20	20	20	20
	460 / 60 / 3	15	10	15	15

Compiled in accordance with the National Electrical Code, NFPA 70, latest edition.

A  $\frac{7}{8}$ " diameter hole for  $\frac{1}{2}$ " trade size conduit is located at the upper rear of the column. Use watertight connections. Refer to Electrical Data, the machine data plate, and the wiring diagram located on the machine when making the electrical connection. Connect the electrical power supply leads to the pigtail leads; use copper wire rated at least 60°C for the connection.

### CHECK MOTOR ROTATION (Three-Phase Machines)

If the motor does not rotate so the teeth of the saw blade run downward as you look at the cutting zone, correct the rotation using the following procedure:

**WARNING:** DISCONNECT ELECTRICAL POWER SUPPLY AND PLACE A TAG AT THE DISCONNECT SWITCH INDICATING THAT YOU ARE WORKING ON THE CIRCUIT.

Interchange any two of the incoming power supply leads. Reconnect the power supply and turn the saw momentarily on and off to verify correct rotation.

### CONTROL BOX HEATER

The meat saw has a heater in the control box to keep the controls dry. The heater is automatically ON when the machine is electrically connected. The meat saw should be connected to the power supply EXCEPT when performing assembly, disassembly, cleaning, or maintenance on the saw.

### CLEAN SAW BEFORE USE

The saw must be thoroughly cleaned and sanitized after installation and before use. Refer to Cleaning, page 11.

# OPERATION

SAFETY DEVICES INCORPORATED IN THIS SAW MUST BE IN THEIR CORRECT OPERATING POSITIONS ANYTIME THE SAW IS IN USE.

## SAFETY FEATURES

### Upper Guide and Guard Assembly

Before turning the saw on, raise or lower the upper guide and guard assembly by grasping the hand knob and sliding up or down so the cutting zone is only as high as necessary for the piece being cut.

### Doors, Covers, and Guards

All doors, covers, and guards must be in their operating position (closed) while the machine is running.

### Pusher Plate

Always keep hands well back from the blade and maintain control of the product. Use the pusher plate as described (page 10) and it will be unnecessary to hold your hand near the cutting edge of the saw blade.

## CONTROLS

Switch Knob            PULL turns the saw On.    PUSH turns the saw Off.

## SAWING

Place product on carriage. Set the upper guide and guard assembly and the gauge plate before starting the machine.

If using the traveling carriage . . .

Stand in front of machine. Lean lightly against the front of the carriage as you move the carriage to the left, passing the product through the blade at a steady and uniform rate.

Use your left hand to remove and stack cuts, always reaching behind the blade. **NEVER REACH IN FRONT OF THE BLADE.** Return the carriage to the right, pulling the product toward you and away from the blade.

If using the stationary carriage . . .

The carriage may be locked in a stationary position by pulling the spring loaded carriage lock out, rotating it 90° and sliding the carriage until the lock engages (Fig. 13). To unlock the carriage, pull the carriage lock out and rotate it 90° so it rests on its bracket. When sawing with stationary table, observe the same safety procedure of reaching behind the blade when removing or stacking product. **NEVER REACH IN FRONT OF THE BLADE.**

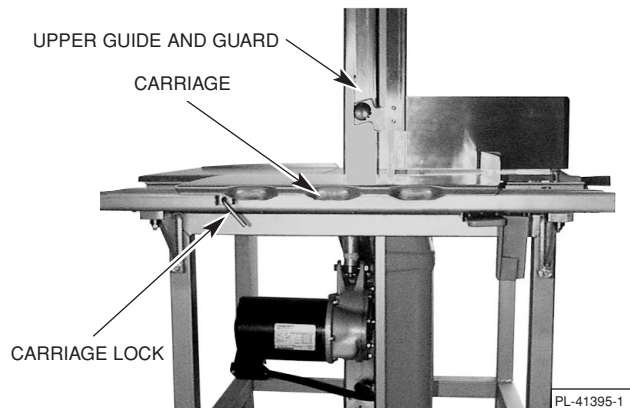


Fig. 13

## GAUGE PLATE

When making several cuts of the same thickness (or when using the pusher plate), set the gauge plate as desired (Fig. 14) by pushing the lock lever and sliding the gauge plate to the thickness you want. A reference scale on the table indicates the thickness of cut. If the gauge plate is not needed, you may release the lock lever and move the gauge plate to the rear; or raise the gauge plate to a vertical position to keep it out of the way.

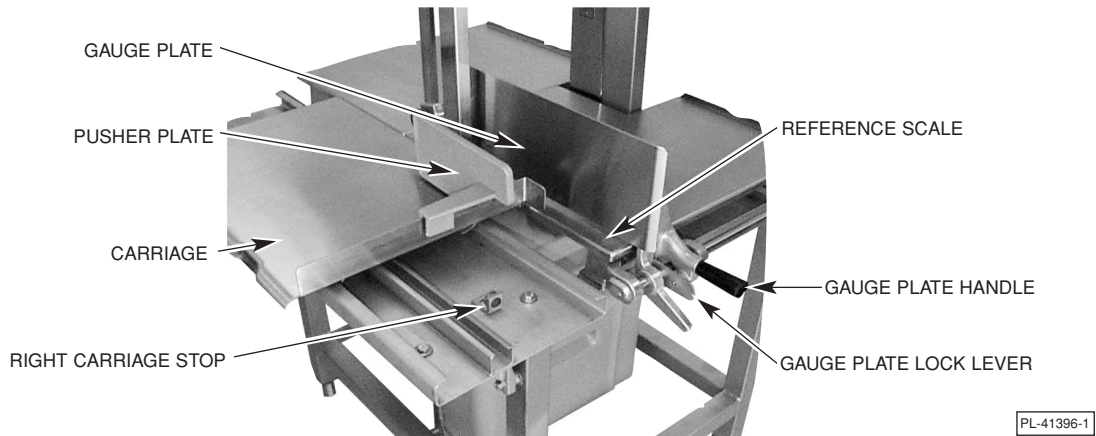


Fig. 14

## PUSHER PLATE

The pusher plate is used to hold meat against the gauge plate when slicing short ends. A slot in the pusher plate and a stop on the right "flanged-end" of the carriage is provided for proper positioning of the pusher plate (Fig. 14). Hold the pusher plate handle with your right hand and always maintain a safe distance from the blade. When not in use, keep the pusher plate under the carriage support (Fig. 2).



## CLEANING AND SANITIZING

**WARNING:** DISCONNECT ELECTRICAL POWER AND PLACE A TAG AT THE DISCONNECT SWITCH INDICATING THE CIRCUIT IS BEING WORKED ON BEFORE CLEANING THIS MACHINE.

The saw must be thoroughly cleaned and sanitized:

Before first use;

After each day's operation;

Anytime it is not to be used for an extended period of time; or

Before being put into operation after an extended downtime.

The meat saw can be cleaned with high-pressure cleaning equipment (available from other suppliers) or it can be disassembled and its components cleaned in a sink. In either case, a neutral pH cleaning agent mixed per the supplier's instructions should be used. After washing, thoroughly sanitize, rinse, and dry the saw and all components.

Disassemble the following saw components to allow access to all areas for cleaning . . .

Upper Pulley Cover

Lower Cover (Scrap Pan)

Tables — Right and Left-Hand

Scrap Tray

Carriage

Column Guard

Pulley Wiper

Blade Scrapers

Lower Blade Guide Assembly

Saw Blade

Upper Guide and Guard Assembly (unscrew Hand Knob to disassemble)

Upper and Lower Pulleys

If using High-Pressure Cleaning Equipment . . .

Scrape the machine and its components to remove any scrap particles before cleaning.

Thoroughly hose the saw and its components following the equipment supplier's instructions. Be sure to get the hose stream into all corners. Stubborn soil may require a little brushing.

If using Sink Cleaning . . .

Use a cloth or brush on base unit. Thoroughly wash, sanitize, rinse, and dry.

Before reassembly, a light coating of tasteless mineral oil should be applied to all metal surfaces. Lubricate six ball bearings on the carriage with a small amount of mineral oil. Apply a few drops of mineral oil to the gauge plate slide rod and work the gauge plate assembly back and forth a few times.

Reassemble the saw components in reverse order of disassembly making sure all parts are properly assembled.

# MAINTENANCE

**WARNING:** DISCONNECT ELECTRICAL POWER SUPPLY AND PLACE A TAG AT THE DISCONNECT SWITCH INDICATING THE CIRCUIT IS BEING WORKED ON.

## LUBRICATION

The motor has permanently lubricated ball bearings and requires no additional lubrication.

The slide bar for the upper guide and guard assembly also requires no lubrication.

After cleaning, apply a small amount of mineral oil to the six ball bearing rollers underneath the carriage, to the gauge plate slide rod, and to the pulley shafts.

## CHANGING SAW BLADES

If changing saw blades, disassemble components as described in REMOVING THE BLADE, page 7, and the instructions for any component throughout the manual. Make sure wipers, scrapers, and all other components are properly reassembled. Refer to BLADE TENSION, page 7. Refer to LOWER BLADE GUIDE, page 7.

## SERVICE

Contact your local Hobart Service Office for any repairs or adjustments needed on this equipment.

# TROUBLESHOOTING

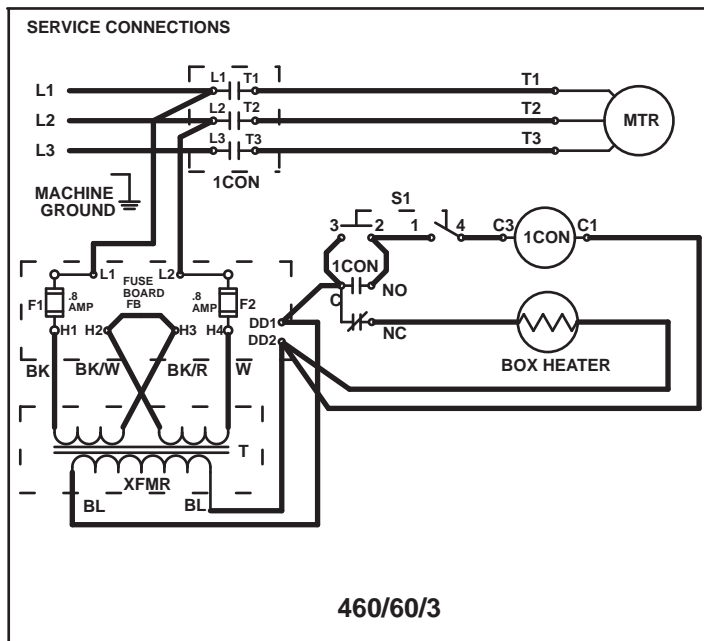
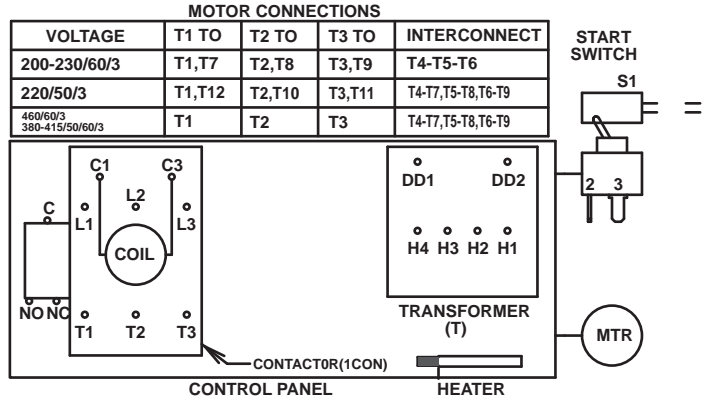
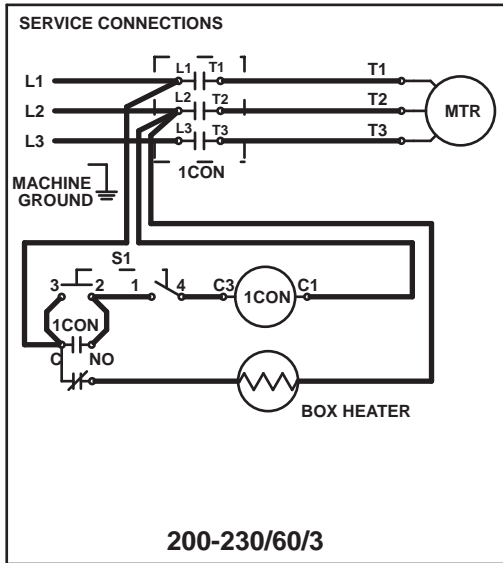
## 6801 MEAT SAW

SYMPTOM	POSSIBLE CAUSE
Circuit breaker tripping when start switch is pulled.	<ol style="list-style-type: none"> <li>1. 1CON malfunction.</li> <li>2. Mechanical bind.</li> <li>3. Motor shorted.</li> <li>4. Motor starting circuit (1 phase) (start switch, capacitor or start windings) open.</li> </ol>
Saw won't start.	<ol style="list-style-type: none"> <li>1. No power to the saw. (Fuses, tripped circuit breaker, etc.)</li> <li>2. Overheated motor. All for reset.</li> <li>3. Start switch malfunction.</li> <li>4. Mechanical bind.</li> </ol>
Noisy motor/transmission	<ol style="list-style-type: none"> <li>1. Motor pinion (try reversing).</li> <li>2. Large gear in transmission.</li> <li>3. Combination of 1 &amp; 2.</li> </ol>
Saw starts when start switch is pulled, but stops when switch is released.	<ol style="list-style-type: none"> <li>1. Start switch malfunction.</li> </ol>
Motor hums.	<ol style="list-style-type: none"> <li>1. Motor single phasing (3 phase unit)               <ol style="list-style-type: none"> <li>A. Check that all 3 legs of 3 phase power are present at terminals T1-T2-T3 on 1CON when 1CON is energized.</li> <li>B. Motor shorted.</li> </ol> </li> <li>2. Motor starting circuit not receiving power (single phase).               <ol style="list-style-type: none"> <li>A. Check for line voltage between T1-T2 and T1-T3 on 1CON when 1Con is energized.</li> <li>B. Motor shorted</li> </ol> </li> <li>3. Mechanical bind.</li> </ol>

**NOTE:**

If symptom(s) persists after possible causes have been checked, contact your local Hobart Service Office.

**WARNING**  
**ELECTRICAL AND GROUNDING**  
**CONNECTIONS MUST COMPLY WITH**  
**THE APPLICABLE PORTIONS OF THE**  
**NATIONAL ELECTRICAL CODE AND/OR**  
**OTHER LOCAL ELECTRICAL CODES**



**SYMBOL DEFINITIONS**

- CON- CONTACTOR
- MTR- MOTOR
- HEATER
- SWITCH - MOMENTARY
- SWITCH - MAINTAINED
- CONTACT NORMALLY OPEN
- CONTACT NORMALLY CLOSED
- FIXED PREWIRING PRINTED CIRCUIT OR OTHER
- DEVICE OUTLINE
- EXTERNAL WIRING

**WIRING DIAGRAM**  
**MEAT SAW**  
**MODELS 6614/6801**



# CATALOG OF REPLACEMENT PARTS



## 6614 MEAT SAW

ML-134096



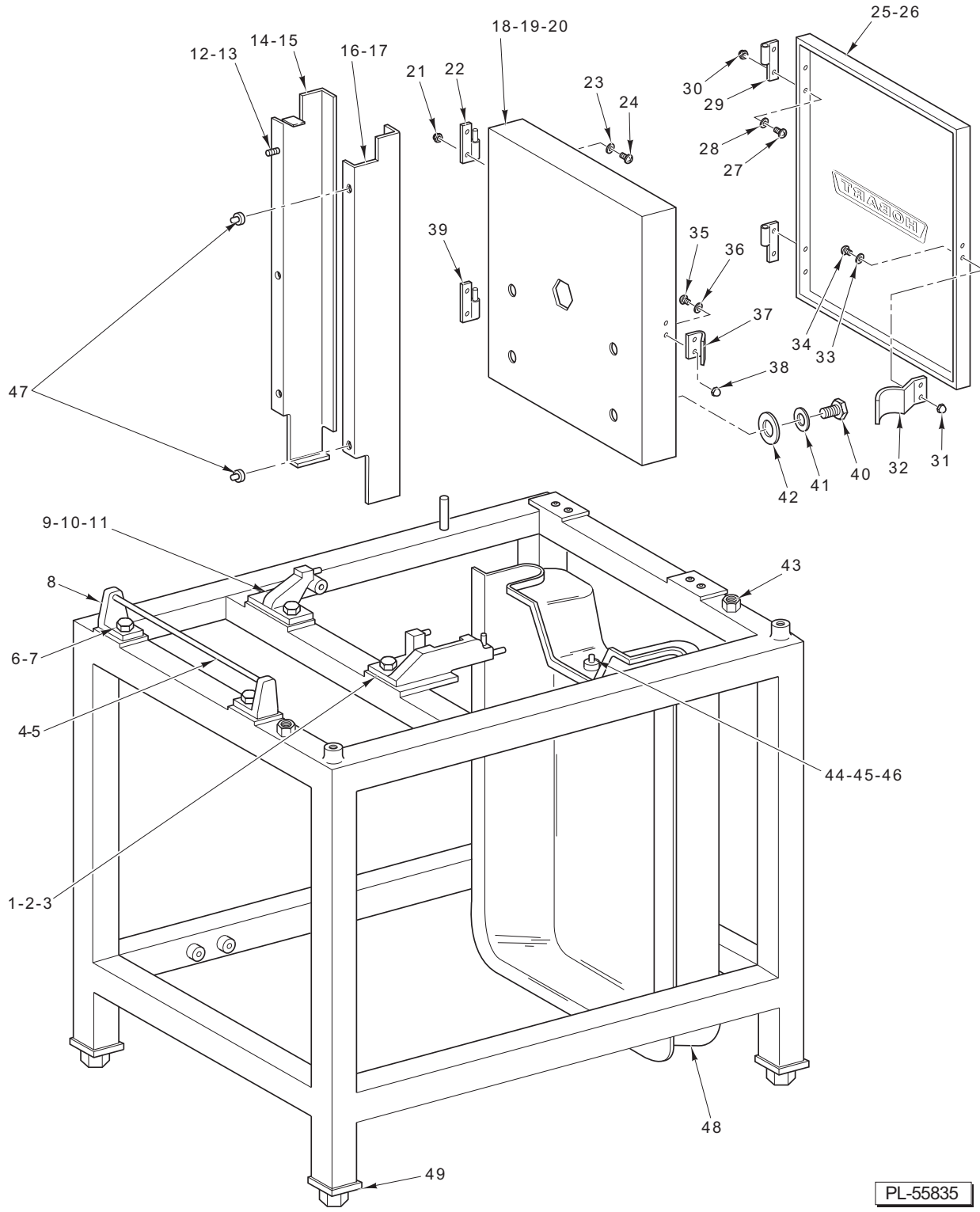
## 6801 MEAT SAW

ML-134094

---

A product of HOBART 701 S. RIDGE AVENUE TROY, OHIO 45374-0001

FORM 43025 Rev. A (April 2007)

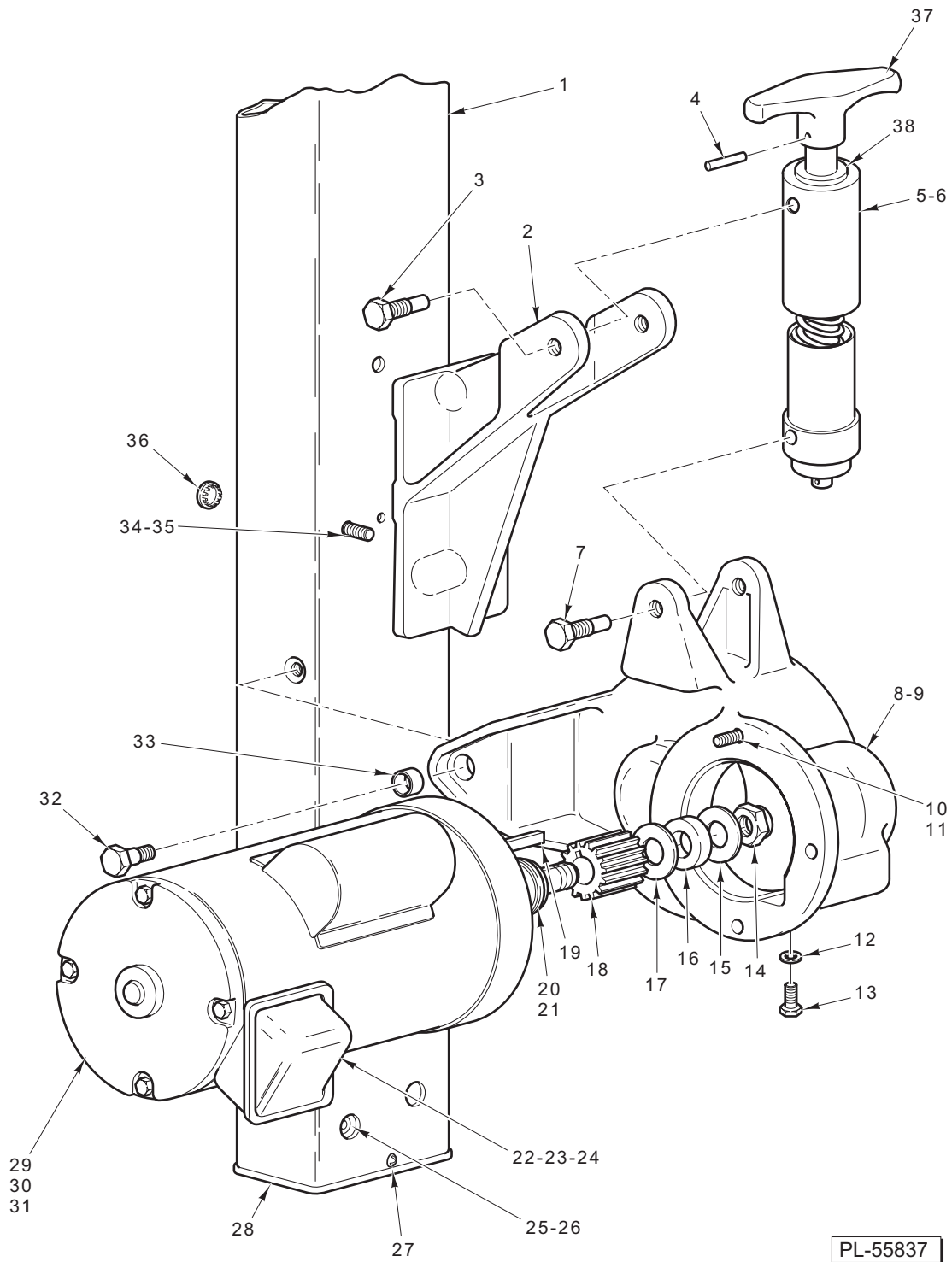


PL-55835

**FRAME AND COVER**

## FRAME AND COVER

ILLUS.	PART NO.	NAME OF PART	AMT.
PL-55835			
1	00-291653	Lower Guide Support & Pin Assy.....	1
2	SC-041-31	Cap Screw 3/8-16 x 1 1/4 Hex Hd.....	2
3	WS-018-40	Washer.....	2
4	00-290758-00001	Rod – Anchor (Left Table) (Model 6801 ML-134094).....	1
5	00-290758-00003	Rod – Anchor (Left Table) (Model 6614 ML-134096).....	1
6	SC-041-31	Cap Screw 3/8-16 x 1 1/4 Hex Hd.....	2
7	WS-018-40	Washer.....	2
8	00-290751	Support – Left Table.....	2
9	00-290752	Table Lock & Pin Assy.....	1
10	SC-041-31	Cap Screw 3/8-16 x 1 1/4 Hex Hd.....	2
11	WS-018-40	Washer.....	2
12	SC-093-07	Mach. Screw 10-32 x 1/2 Pan Hd.....	3
13	WL-006-07	Lockwasher #10 Medium.....	3
14	00-875255	Guard – Column (Model 6801 ML-134094).....	1
15	00-875087	Guard – Column (Model 6614 ML-134096).....	1
16	00-875256	Guard – Removable (Model 6801 ML-134094).....	1
17	00-875088	Guard – Removable (Model 6614 ML-134096).....	1
18	00-873735	Upper Baffle Assy. (Incls. Items 20 thru 23 & 34 thru 38) (Model 6801 ML-134094).....	1
19	00-875112	Upper Baffle Assy. (Incls. Items 20 thru 23 & 34 thru 38) (Model 6614 ML-134096).....	1
20	00-873205	Baffle – Upper Pulley (SST) (Model 6801 ML-134094).....	1
21	NS-046-33	Acorn Nut 6-32 Hex.....	4
22	00-437788	Hinge – Upper Assy.....	1
23	WS-028-03	Washer.....	4
24	SC-115-26	Mach. Screw 6-32 x 1/4 Slotted Pan Hd. (SST).....	4
25	00-479153	Upper Cover Assy. (Incls. Items 26 thru 33) (Model 6801 ML-134094).....	1
26	00-875111	Upper Cover Assy. (Incls. Items 26 thru 33) (Model 6614 ML-134096).....	1
27	SC-115-26	Mach. Screw 6-32 x 1/4 Slotted Pan Hd. (SST).....	4
28	WS-028-03	Washer.....	4
29	00-437378-00002	Hinge – Lift Off (W/O Pin).....	2
30	NS-046-33	Acorn Nut 6-32 Hex.....	4
31	NS-046-33	Acorn Nut 6-32 Hex.....	2
32	00-291502	Clip – Latch.....	1
33	WS-028-03	Washer.....	2
34	SC-021-07	Mach. Screw 6-32 x 1/4 Rd. Hd. Slotted.....	2
35	SC-021-07	Mach. Screw 6-32 x 1/4 Rd. Hd. Slotted.....	2
36	WS-028-03	Washer.....	2
37	00-437608	Clip – Retainer.....	1
38	NS-046-33	Acorn Nut 6-32 Hex.....	2
39	00-437787	Hinge – Lower Assy.....	1
40	SC-041-50	Cap Screw 1/4-20 x 1/2 Hex Hd.....	4
41	WS-003-47	Washer.....	4
42	00-291763-00002	Washer – Rubber (Model 6801 ML-134094).....	4
43	00-875054	Screw – Jack (Model 6614 ML-134096).....	2
44	00-290860	Anchor – Lower Cover.....	1
45	SC-041-05	Cap Screw 1/4-20 x 5/8 Hex Hd.....	1
46	WS-003-47	Washer.....	1
47	00-436908	Pin – Anchor.....	2
48	00-875184	Cover – Lower (Incls. Items 42, 43, & 44) (Model 6801 ML-134094).....	1
49	00-435792	Foot (2 to 4 In. Adjustable Height).....	4



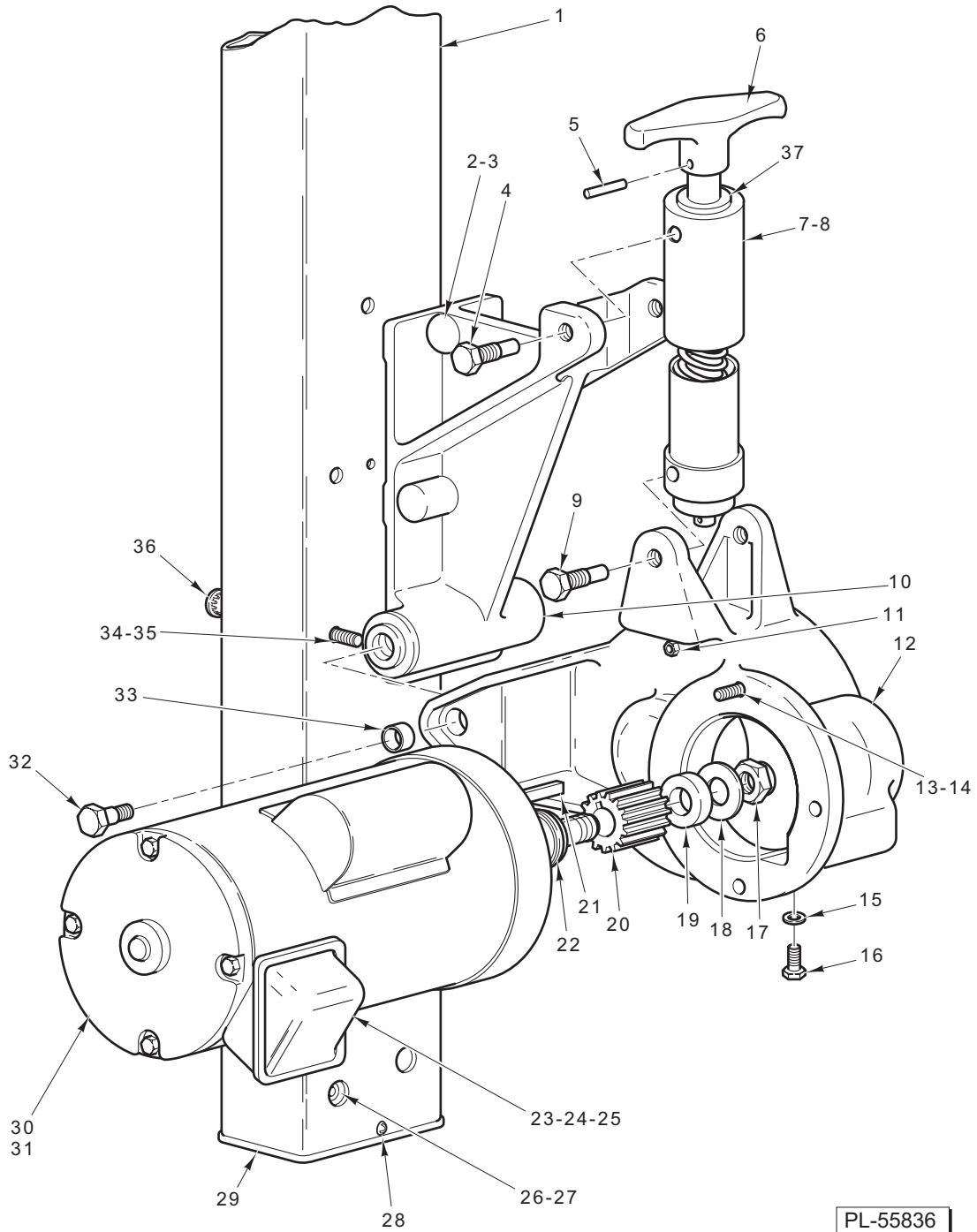
PL-55837

**DRIVE AND TENSION ADJUSTMENT UNIT  
(MODEL 6614 ML-134096)**



**DRIVE AND TENSION ADJUSTMENT UNIT  
(MODEL 6614 ML-134096)**

ILLUS. PL-55837	PART NO.	NAME OF PART	AMT.
1	00-875134-00001	Column & Label Assy.....	1
2	00-875047-00002	Transmission Support Assy.....	1
3	00-290832	Pivot – Tension Adjusting.....	2
4	RP-002-07	Roll Pin <sup>3</sup> / <sub>16</sub> x 1 <sup>1</sup> / <sub>4</sub> Lg. (SST).....	1
5	00-873500	Tensioner Assy. (Incls. Items 4, 6, 37, & 38).....	1
6	BN-005-06	Needle Bearing – Torrington NTA-1018.....	1
7	00-290832	Pivot – Tension Adjusting.....	2
8	00-120971	Plug – Vent.....	1
9	00-875137	Gear Case Assy. (Incls. Items 8 & 33).....	1
10	SC-041-31	Cap Screw <sup>3</sup> / <sub>8</sub> -16 x 1 <sup>1</sup> / <sub>4</sub> Hex Hd.....	3
11	WL-019-85	Lockwasher.....	3
12	WS-021-20	Washer.....	1
13	SC-036-93	Cap Screw <sup>7</sup> / <sub>16</sub> -20 x <sup>3</sup> / <sub>4</sub> Hex Hd.....	1
14	NS-046-29	Lock Nut <sup>3</sup> / <sub>4</sub> -16 Flexlox.....	1
15	SL-005-02	Spring – Loading.....	1
16	00-290866	Washer – Damper.....	1
17	SL-005-02	Spring – Loading.....	1
18	00-875043	Pinion – Drive.....	1
19	00-109070-00008	Key.....	1
20	SL-005-02	Spring – Loading.....	2
21	00-290866	Washer – Damper.....	1
22	SC-027-29	Mach. Screw 8-32 x <sup>3</sup> / <sub>8</sub> Rd. Hd.....	AR
23	WL-010-01	Lockwasher #8 External Shakeproof.....	AR
24	NS-010-11	Nut 8-32 Hex (Brass).....	AR
25	SC-040-21	Cap Screw <sup>3</sup> / <sub>8</sub> -16 x <sup>7</sup> / <sub>8</sub> Soc. Hd.....	4
26	WL-006-28	Lockwasher <sup>3</sup> / <sub>8</sub> Helical.....	4
27	SD-038-03	Self-Tapping Screw 10-16 x <sup>3</sup> / <sub>4</sub> Truss Hd.....	4
28	00-479134	End Cap.....	1
29	00-437301-00001	Motor (60 Hz.) (3 Ph.).....	1
30	00-437301-00003	Motor (50 Hz.) (3 Ph.).....	1
31	00-479005	Motor (1 Ph.).....	1
32	00-873986	Screw Shoulder.....	2
33	00-291859-00002	Bushing <sup>3</sup> / <sub>8</sub> Lg.....	2
34	SC-040-21	Cap Screw <sup>3</sup> / <sub>8</sub> -16 x <sup>7</sup> / <sub>8</sub> Soc. Hd.....	5
35	WS-018-04	Washer.....	5
36	PB-005-15	Plug Button.....	11
37	00-875670	Knob – Tension Adjust.....	1
38	BB-021-45	Bearing – Thrust 0.6371.....	1
	00-875114-00001	Motor & Pinion Assy. (60 Hz.) (3 Ph.) (Incls. Items 14 thru 21 & 29).....	1
	00-875114-00003	Motor & Pinion Assy. (60 Hz.) (1 Ph.) (Incls. Items 14 thru 21 & 31).....	1

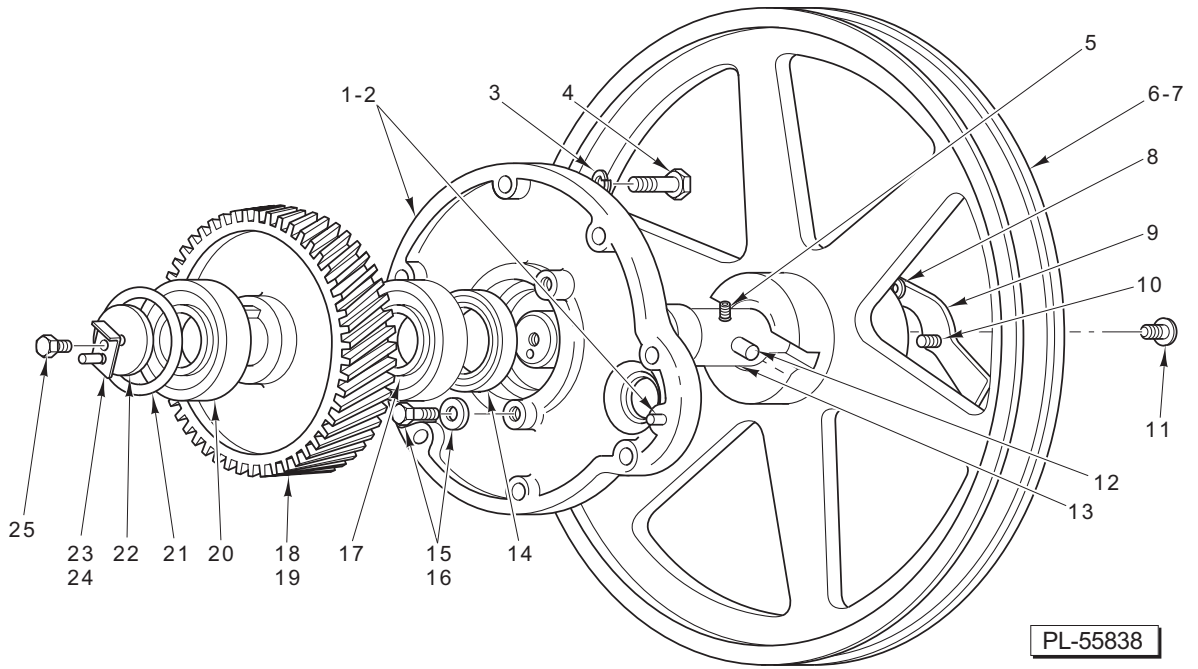


PL-55836

**DRIVE AND TENSION ADJUSTMENT UNIT  
(MODEL 6801 ML-134094)**

**DRIVE AND TENSION ADJUSTMENT UNIT  
(MODEL 6801 ML-134094)**

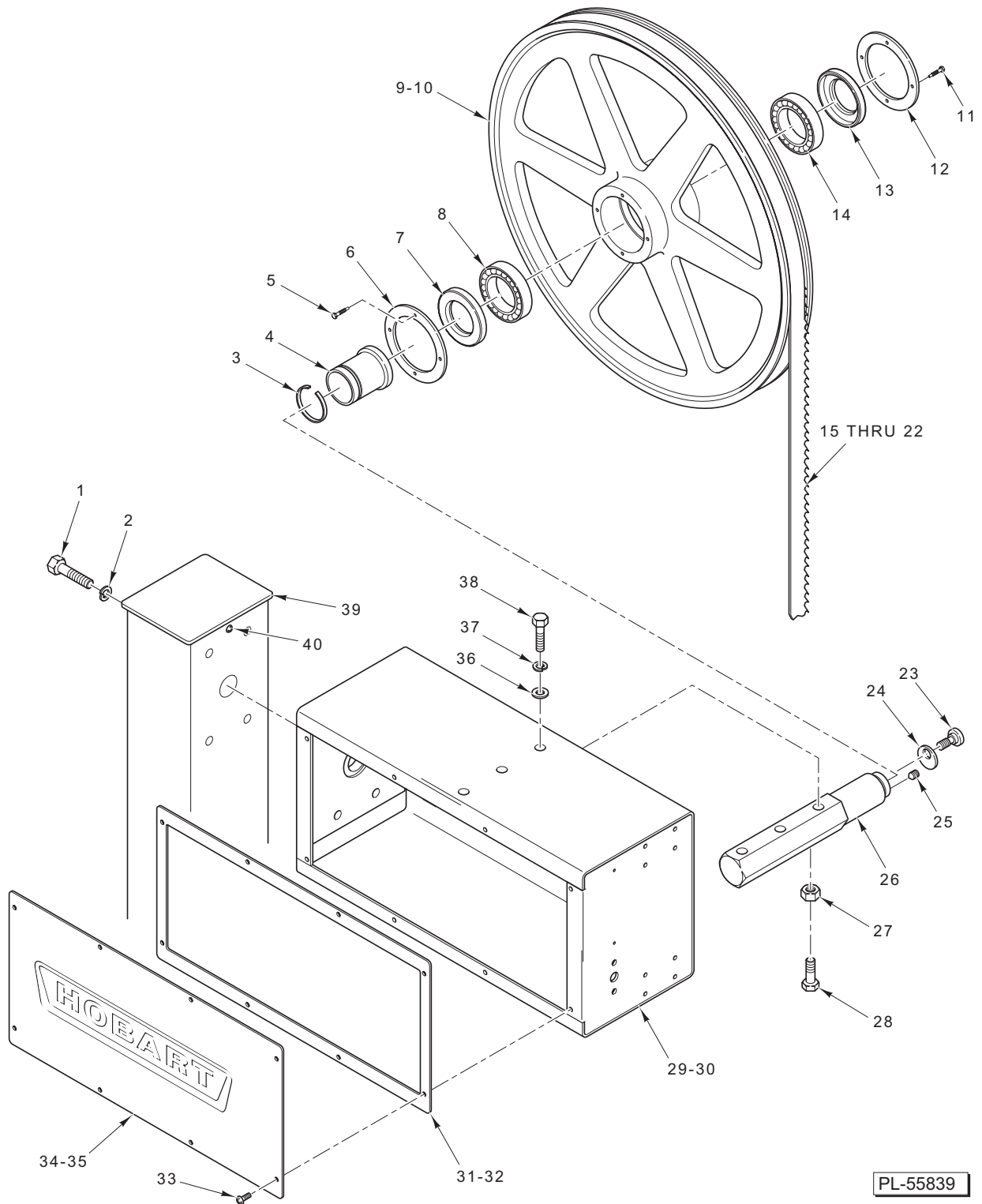
ILLUS. PL-55836	PART NO.	NAME OF PART	AMT.
1	00-873696-00001	Column & Label Assy.....	1
2	00-292286-00002	Transmission Support Assy. (Incls. Item 3).....	1
3	00-011800-00118	Dowel.....	1
4	00-290832	Pivot – Tension Adjusting.....	2
5	RP-002-07	Roll Pin <sup>3</sup> / <sub>16</sub> x 1 <sup>1</sup> / <sub>4</sub> Lg. (SST).....	1
6	00-875670	Knob – Tension Adjust.....	1
7	00-873500	Tensioner Assy. (Incls. Items 5, 6, 8, & 37).....	1
8	BN-005-06	Needle Bearing – Torrington NTA-1018.....	1
9	00-290832	Pivot – Tension Adjusting.....	2
10	00-291859-00001	Bushing <sup>1</sup> / <sub>2</sub> Lg.....	1
11	00-120971	Plug – Vent.....	1
12	00-875137	Gear Case Assy.....	1
13	SC-041-31	Cap Screw <sup>3</sup> / <sub>8</sub> -16 x 1 <sup>1</sup> / <sub>4</sub> Hex Hd.....	3
14	WL-019-85	Lockwasher.....	3
15	WS-021-20	Washer.....	1
16	SC-036-93	Cap Screw <sup>7</sup> / <sub>16</sub> -20 x <sup>3</sup> / <sub>4</sub> Hex Hd.....	1
17	NS-046-29	Lock Nut <sup>3</sup> / <sub>4</sub> -16 Flexlox.....	1
18	SL-005-02	Spring – Loading.....	1
19	00-290866	Washer – Damper.....	1
20	00-875043	Pinion – Drive (16T).....	1
21	00-109070-00008	Key.....	1
22	SL-005-02	Spring – Loading.....	6
23	SC-027-29	Mach. Screw 8-32 x <sup>3</sup> / <sub>8</sub> Rd. Hd.....	AR
24	WL-010-01	Lockwasher #8 External Shakeproof.....	AR
25	NS-010-11	Nut 8-32 Hex (Brass).....	AR
26	SC-040-21	Cap Screw <sup>3</sup> / <sub>8</sub> -16 x <sup>7</sup> / <sub>8</sub> Soc. Hd.....	4
27	WL-006-28	Lockwasher <sup>3</sup> / <sub>8</sub> Helical.....	4
28	SD-038-03	Self-Tapping Screw 10-16 x <sup>3</sup> / <sub>4</sub> Truss Hd.....	2
29	00-479134	End Cap.....	1
30	00-437301-00001	Motor (60 Hz.) (3 Ph.).....	1
31	00-479005	Motor (1 Ph.).....	1
32	00-873986	Screw Shoulder.....	1
33	00-291859-00002	Bushing <sup>1</sup> / <sub>2</sub> Lg.....	2
34	SC-040-21	Cap Screw <sup>3</sup> / <sub>8</sub> -16 x <sup>7</sup> / <sub>8</sub> Soc. Hd.....	5
35	WS-018-04	Washer.....	5
36	PB-005-15	Plug Button.....	13
37	BB-021-45	Bearing – Thrust 0.6371.....	1



**LOWER PULLEY UNIT**

### LOWER PULLEY UNIT

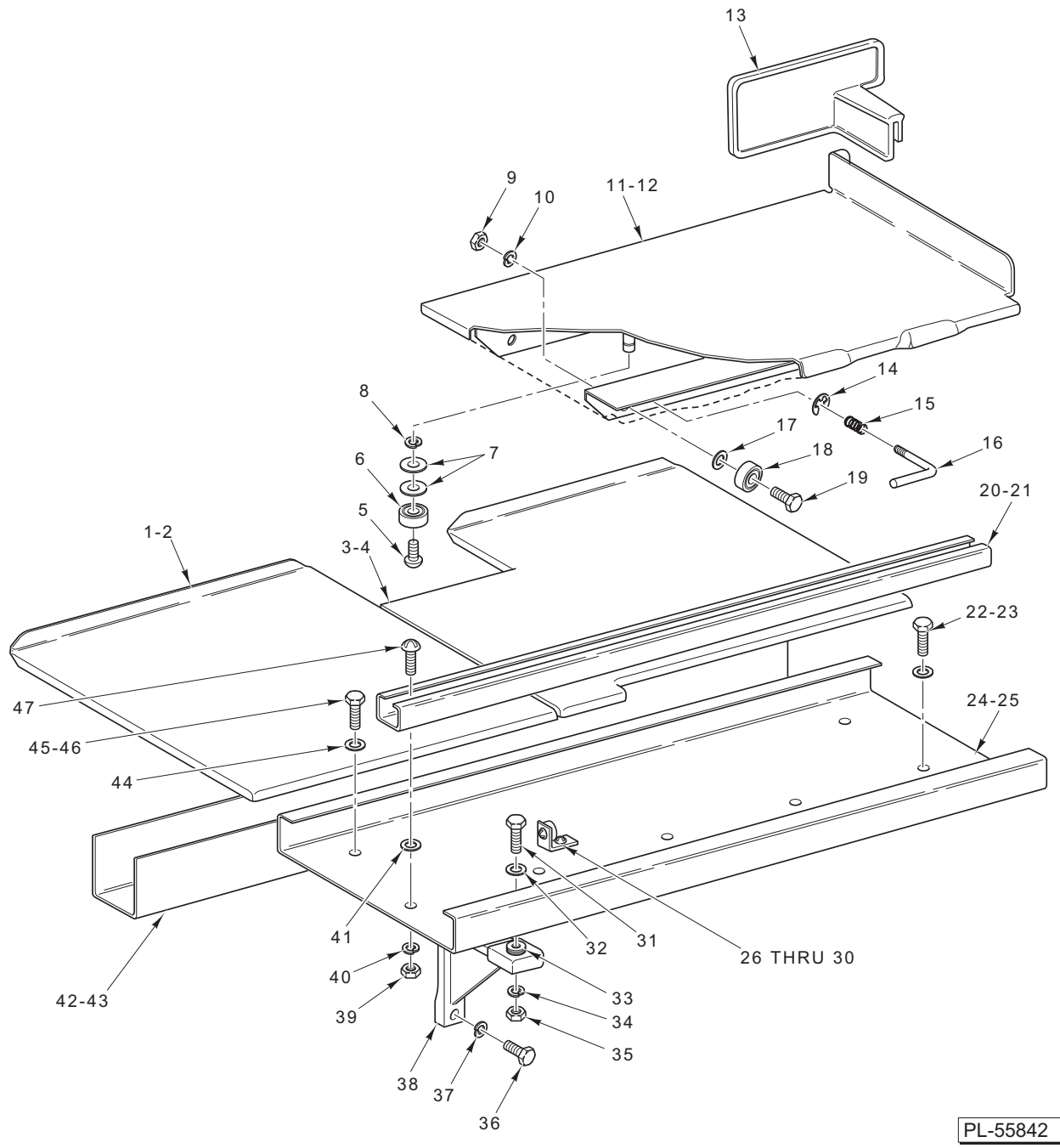
ILLUS. PL-55838	PART NO.	NAME OF PART	AMT.
1	00-290817-00002	Gear Case Cover Assy. (Incls. Item 2).....	1
2	00-011800-00091	Dowel.....	2
3	WL-006-22	Lockwasher <sup>5</sup> / <sub>16</sub> Light.....	7
4	SC-041-15	Cap Screw <sup>5</sup> / <sub>16</sub> -18 x 1 <sup>1</sup> / <sub>4</sub> Hex Hd.....	7
5	SC-119-20	Set Screw <sup>1</sup> / <sub>4</sub> -20 x <sup>1</sup> / <sub>2</sub> Soc. Hdls., Flat Pt.....	1
6	ML-134098-0000Z	Pulley and Latch Assy. (Incls. Items 8, 9, & 10) (Model 6614 ML-134096).....	1
7	ML-109653-0000Z	Pulley and Latch Assy. (Incls. Items 8, 9, & 10) (Model 6801 ML-134094).....	1
8	00-079686	Catch – Friction.....	1
9	00-875150	Latch.....	1
10	00-020851	Screw – Latch.....	1
11	SD-005-49	Self-Tapping Screw 12 x <sup>1</sup> / <sub>2</sub> Rd. Hd., Type U.....	1
12	00-436447	Drive Pin.....	1
13	00-292278	Shaft – Lower.....	1
14	00-290805	Seal – Shaft.....	1
15	SC-062-59	Cap Screw <sup>5</sup> / <sub>16</sub> -18 x <sup>5</sup> / <sub>8</sub> Hex Hd.....	3
16	WS-018-19	Washer.....	3
17	BB-007-21	Ball Bearing.....	1
18	00-875044-00002	Gear – Drive (58T).....	1
19	00-109070-00009	Key.....	1
20	BB-007-21	Ball Bearing.....	1
21	SL-003-11	Spring – Loading ND 72.....	2
22	00-291973-00002	Retainer – Shaft.....	1
23	00-291624	Retainer – Lock.....	1
24	RP-003-18	Roll Pin <sup>1</sup> / <sub>8</sub> x <sup>7</sup> / <sub>8</sub> Lg.....	1
25	SC-041-13	Cap Screw <sup>5</sup> / <sub>16</sub> -18 x 2.....	1



**UPPER BEARING CARRIER UNIT**

## UPPER BEARING CARRIER UNIT

ILLUS.	PART NO.	NAME OF PART	AMT.
	PL-55839		
1	SC-040-21	Cap Screw $\frac{3}{8}$ -16 x $\frac{7}{8}$ Soc. Hd.	4
2	WL-006-28	Lockwasher $\frac{3}{8}$ Helical	4
3	RR-004-13	Retaining Ring (Truarc)	1
4	00-479143	Bushing – Pulley	1
5	SC-067-06	Mach. Screw 10-24 x $\frac{1}{2}$ Hex Hd.	4
6	00-873461-00002	Cover – Rear Pulley	1
7	00-873501	Seal – Shaft	1
8	BB-015-36	Ball Bearing – NSK 6007 DDUCE1SRIS	1
9	ML-134048-0000Z	Pulley Assy. – Upper (Incls. Items 3 thru 8, & 11 thru 14) (Model 6614 ML-134096)	1
10	ML-104999-0000Z	Pulley Assy. – Upper (Incls. Items 3 thru 8, & 11 thru 14) (Model 6801 ML-134094)	1
11	SC-067-06	Mach. Screw 10-24 x $\frac{1}{2}$ Hex Hd.	4
12	00-873461-00001	Cover – Front Pulley	1
13	00-873502	Seal – Shaft	1
14	BB-015-36	Ball Bearing – NSK 6007 DDUCE1SRIS	1
15	00-477011-00126	Blade – Saw ( $\frac{5}{8}$ In. Wd. x 0.022 Thk.) (3T) (Model 6614 ML-134096)	1
16	00-477016-00126	Blade – Saw ( $\frac{5}{8}$ In. Wd. x 0.022 Thk.) (4T) (Model 6614 ML-134096)	1
17	00-477086-00126	Blade – Saw ( $\frac{5}{8}$ In. Wd. x 0.025 Thk.) (Scalloped) (Model 6614 ML-134096)	1
18	00-477011-00142	Blade – Saw ( $\frac{5}{8}$ In. Wd. x 0.022 Thk.) (3T) (Model 6801 ML-134094)	1
19	00-477016-00142	Blade – Saw ( $\frac{5}{8}$ In. Wd. x 0.022 Thk.) (4T) (Model 6801 ML-134094)	1
20	00-477086-00142	Blade – Saw ( $\frac{5}{8}$ In. Wd. x 0.025 Thk.) (Scalloped) (Model 6801 ML-134094)	1
21	00-290868-00001	Blade – Saw ( $\frac{5}{8}$ In. Wd. x 0.022 Thk.) (4T) (Model 6801 ML-134094)	1
22	00-875188-00001	Blade – Saw ( $\frac{5}{8}$ In. Wd. x 0.022 Thk.) (4T) (Model 6614 ML-134096)	1
23	00-020851	Screw – Latch	1
24	00-479142	Retainer – Pulley	1
25	00-079686	Catch – Friction	1
26	00-479144	Shaft – Upper	1
27	NS-018-14	Jam Nut $\frac{3}{8}$ -16 Hex	2
28	SC-127-03	Cap Screw – $\frac{3}{8}$ -16 x $1\frac{3}{4}$ Hex Hd.	2
29	00-875072	Box Column Assy. (Model 6614 ML-134096)	1
30	00-875227	Box Column Assy. (60 Hz.) (Model 6801 ML-134094)	1
31	00-875080	Gasket – Column Box (Model 6614 ML-134096)	1
32	00-873820	Gasket – Column Box (Model 6801 ML-134094)	1
33	SC-025-33	Mach. Screw 8-32 x $\frac{1}{2}$ Bndg. Hd.	8
34	00-875077	Cover – Column Box (Model 6614 ML-134096)	1
35	00-479672	Cover – Column Box (60 Hz.) (Model 6801 ML-134094)	1
36	WS-018-40	Washer (Model 6614 ML-134096)	3
37	WL-006-27	Lockwasher $\frac{3}{8}$ Light	3
38	SC-041-31	Cap Screw $\frac{3}{8}$ -16 x $1\frac{1}{4}$ Hex Hd.	3
39	00-479134	End Cap	1
40	SD-038-03	Self-Tapping Screw 10-16 x $\frac{3}{4}$ Truss Hd.	2

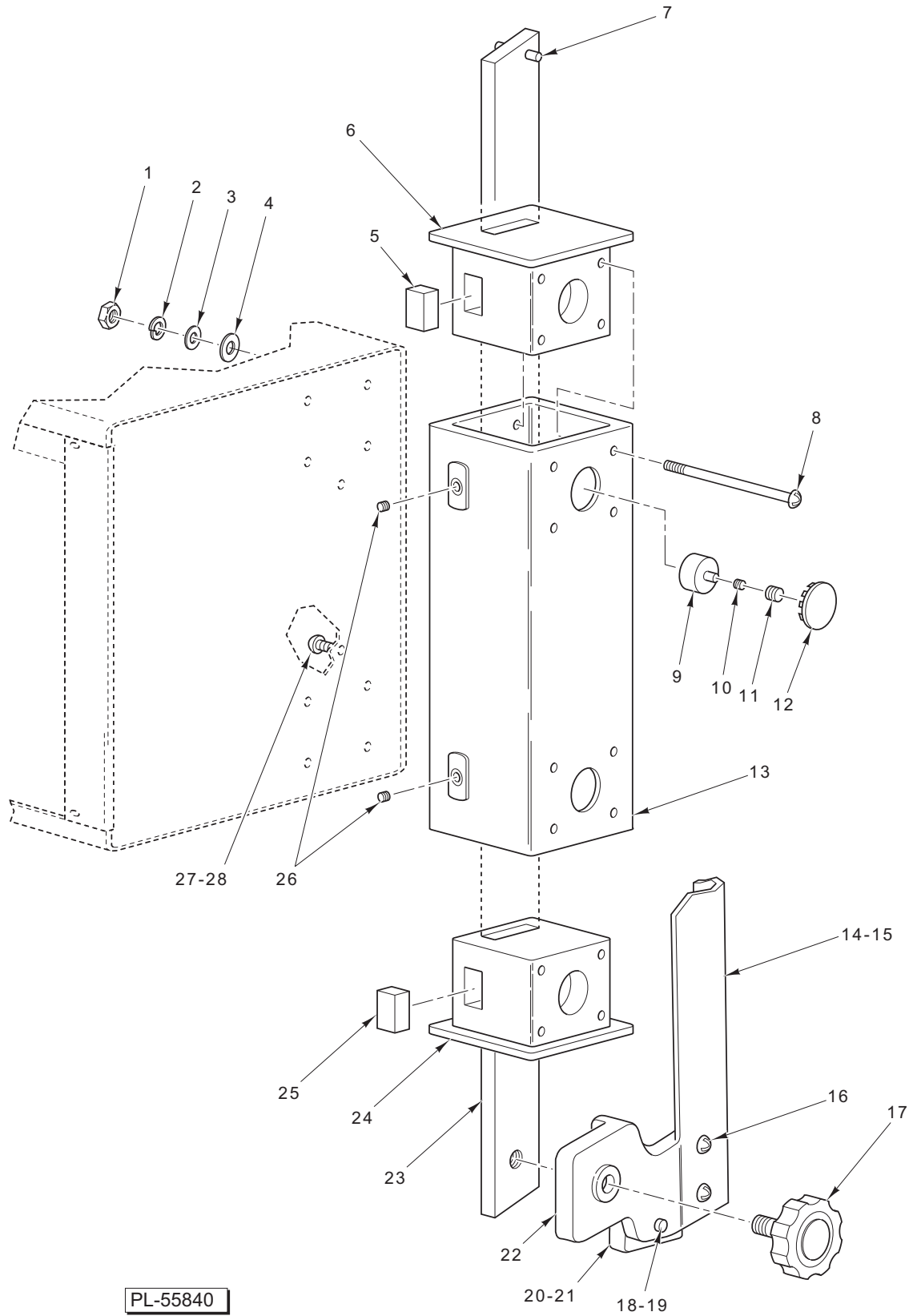


**TABLES AND CARRIAGE UNIT**



## TABLES AND CARRIAGE UNIT

ILLUS. PL-55842	PART NO.	NAME OF PART	AMT.
1	00-290771	Table – Left Assy. (Model 6801 ML-134094)	1
2	00-875066	Table – Left Assy. (Model 6614 ML-134096)	1
3	00-291654	Table – Right Assy. (Model 6801 ML-134094)	1
4	00-875068	Table – Right Assy. (Model 6614 ML-134096)	1
5	SC-041-30	Cap Screw $\frac{3}{8}$ -16 x 1 Hex Hd. (SST)	2
6	BB-008-11	Ball Bearing – Nice #SK-T 4725	2
7	WS-018-30	Washer	4
8	WL-006-28	Lockwasher $\frac{3}{8}$ Medium	2
9	NS-046-09	Stop Nut $\frac{3}{8}$ -16 Elastic	4
10	WL-006-27	Lockwasher $\frac{3}{8}$ Light	4
11	00-437469	Carriage Assy. (Incls. Items 5 thru 10 & 14 thru 19) (Model 6801 ML-134094)	1
12	00-875136	Carriage Assy. (Incls. Items 5 thru 10 & 14 thru 19) (Model 6614 ML-134096)	1
13	00-291435	Pusher Plate	1
14	RR-011-09	Retaining Ring	1
15	00-290787	Spring – Carriage Lock	1
16	00-290795	Lever – Carriage Lock	1
17	WS-018-34	Washer (Model 6801 ML-134094)	4
18	BB-008-11	Ball Bearing – Nice #SK-T 4725	4
19	SC-041-30	Cap Screw $\frac{3}{8}$ -16 x 1 Hex Hd.	4
20	00-437476	Guide – Roller (Model 6801 ML-134094)	1
21	00-875089	Guide – Roller (Model 6614 ML-134096)	1
22	SC-041-29	Cap Screw $\frac{3}{8}$ -16 x $\frac{7}{8}$ Hex Hd. Wax Coated Threads (Model 6614 ML-134096)	2
23	WS-018-40	Washer (Model 6614 ML-134096)	2
24	00-873798	Support – Carriage (Model 6801 ML-134094)	1
25	00-875091	Support – Carriage (Model 6614 ML-134096)	1
26	00-479107	Stop – Carriage	2
27	SC-124-44	Bolt – Sq. Neck $\frac{5}{16}$ -18 x $\frac{3}{4}$ Rd. Hd.	2
28	NS-036-19	Stop Nut $\frac{5}{16}$ -18 Elastic	2
29	00-873789	Bumper – Carriage Stop	2
30	WL-006-23	Lockwasher $\frac{5}{16}$ Medium (SST)	2
31	SC-041-33	Cap Screw $\frac{3}{8}$ -16 x 1 $\frac{3}{4}$ Hex Hd. (SST) (Model 6801 ML-134094)	2
32	WS-018-40	Washer (Model 6801 ML-134094)	2
33	00-292284	Screw – Jack (Model 6801 ML-134094)	2
34	WL-006-27	Lockwasher $\frac{3}{8}$ Light (Model 6801 ML-134094)	2
35	NS-018-14	Jam Nut $\frac{3}{8}$ -16 Hex (Model 6801 ML-134094)	2
36	SC-041-31	Cap Screw $\frac{3}{8}$ -16 x 1 $\frac{1}{4}$ Hex Hd. (Model 6801 ML-134094)	2
37	WL-006-27	Lockwasher $\frac{3}{8}$ Light (Model 6801 ML-134094)	2
38	00-291958-00002	Brace – Carriage Support (Model 6801 ML-134094)	2
39	NS-015-11	Nut $\frac{5}{16}$ -18 Hex	5
40	WL-006-23	Lockwasher $\frac{5}{16}$ Medium (SST)	5
41	WS-017-21	Washer	5
42	00-290790	Tray – Scrap (Model 6801 ML-134094)	1
43	00-875065	Tray – Scrap (Model 6614 ML-134096)	1
44	WS-018-40	Washer	2
45	SC-041-29	Cap Screw $\frac{3}{8}$ -16 x $\frac{7}{8}$ Hex Hd. Wax Coated Threads (Model 6801 ML-134094)	2
46	SC-041-34	Cap Screw $\frac{3}{8}$ -16 x 2 Hex Hd. (Model 6614 ML-134096)	2
47	SC-124-44	Bolt – Sq. Neck $\frac{5}{16}$ -18 x $\frac{3}{4}$ Rd. Hd.	5

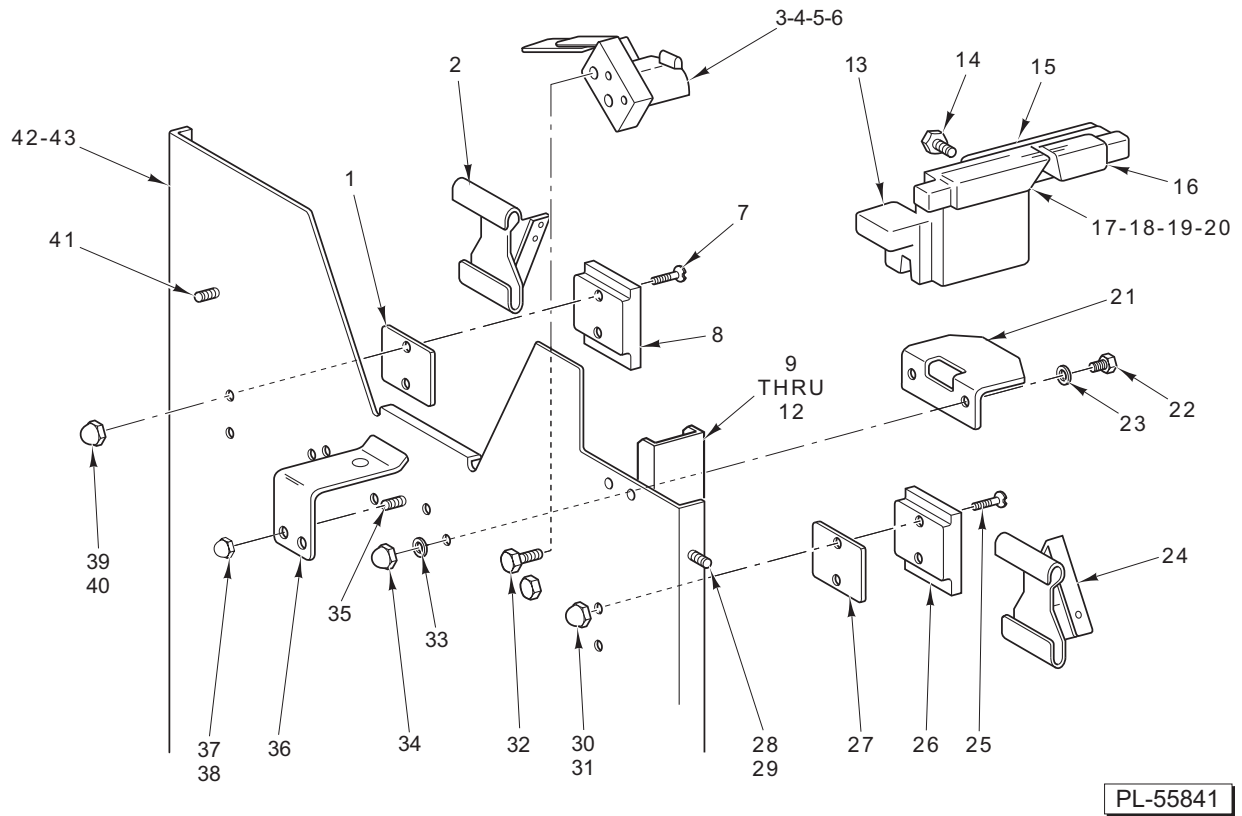


PL-55840

**UPPER GUIDE UNIT**

## UPPER GUIDE UNIT

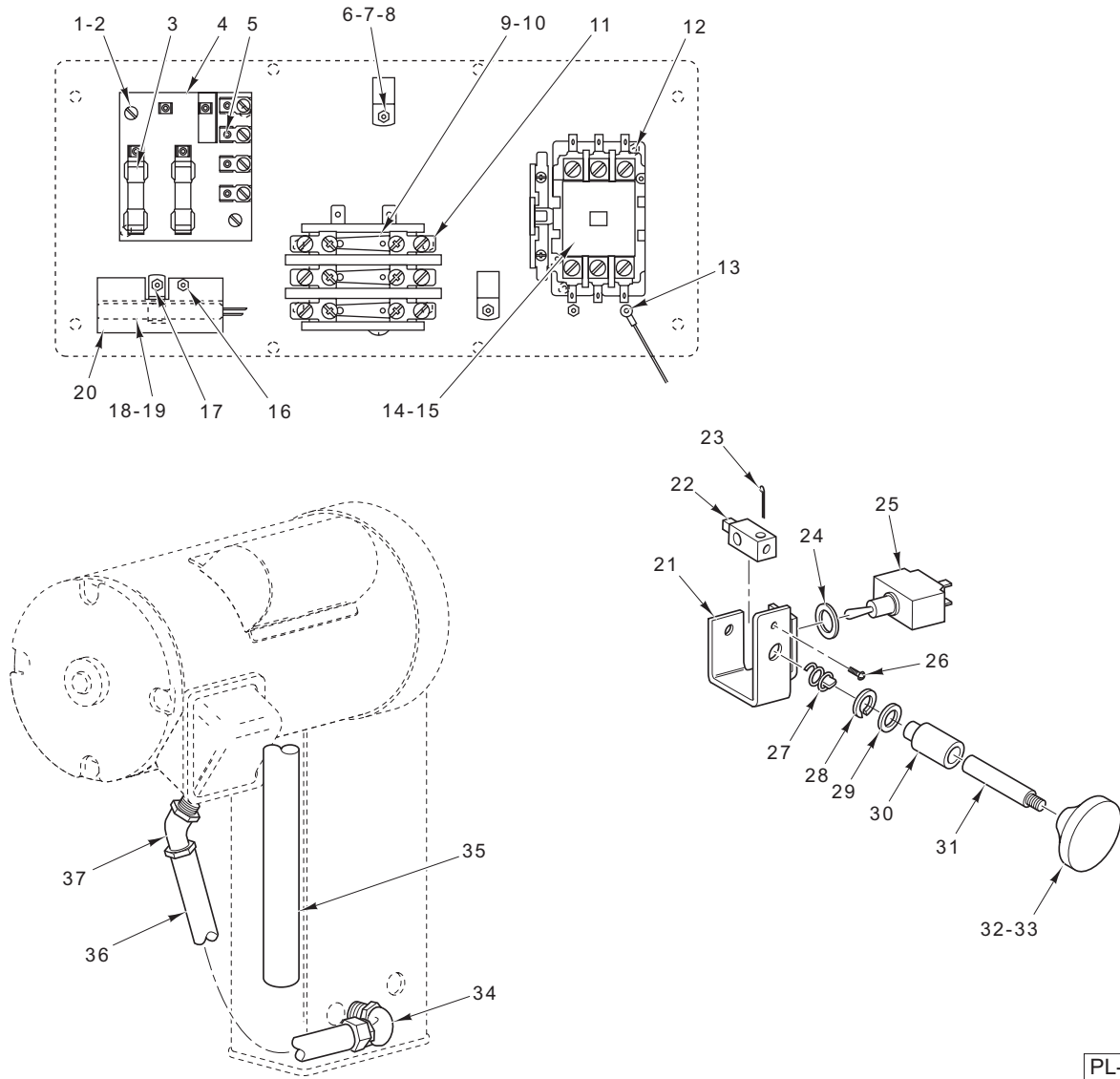
ILLUS.	PART NO.	NAME OF PART	AMT.
PL-55840			
1	NS-011-12	Nut 8-32 Hex.....	8
2	WL-014-05	Lockwasher #8 External Shakeproof.....	8
3	WS-023-22	Washer.....	8
4	WS-031-35	Washer.....	8
5	00-479766	Slide Lock .....	1
6	00-478999	Guide Bar Insert.....	1
7	PG-007-16	Groove Pin <sup>3</sup> / <sub>16</sub> Dia. x <sup>3</sup> / <sub>4</sub> Lg. ....	1
8	SC-021-17	Mach. Screw 8-32 x 2 <sup>1</sup> / <sub>2</sub> Rd. Hd.....	8
9	00-120141	Shoe – Slide Rod .....	2
10	00-873782	Spring – Slide Rod.....	2
11	SC-046-70	Set Screw <sup>3</sup> / <sub>8</sub> -16 x <sup>1</sup> / <sub>2</sub> Hdls., Cup Pt.....	2
12	PB-005-09	Plug Button .....	2
13	00-478998	Support – Guide Bar .....	1
14	00-875056	Guard – Front Blade (Model 6614 ML-134096).....	1
15	00-291441	Guard – Front Blade (Model 6801 ML-134094).....	1
16	SC-053-05	Mach. Screw 10-24 x <sup>3</sup> / <sub>8</sub> Truss Hd., Slotted .....	2
17	00-435958-00002	Knob – Adjusting .....	1
18	SC-041-02	Cap Screw <sup>1</sup> / <sub>4</sub> -20 x 1 Hex Hd. (Lower Guide) .....	1
19	00-291579	Washer – Guide .....	1
20	00-290844-00001	Guide – Saw Blade (0.022" Blade) .....	1
21	00-290844-00002	Guide – Saw Blade (0.014" Blade) .....	1
22	00-290842	Holder – Upper Guide.....	1
23	00-873204	Upper Guide Support Bar Assy (Incls. Item 7).....	1
24	00-478999	Guide Bar Insert.....	1
25	00-479766	Slide Lock .....	1
26	SC-055-01	Set Screw 10-24 x <sup>1</sup> / <sub>4</sub> Soc. Hdls., Cup Pt. (SST) .....	2
27	SC-025-33	Mach. Screw 8-32 x <sup>1</sup> / <sub>2</sub> Bndg. Hd.....	2
28	NS-011-12	Nut 8-32 Hex.....	2
	00-291442	Guide Assy. – Upper (Incls. Items 15, 16, & 22) (Model 6801 ML-134094).....	1
	00-875135	Guide Assy. – Upper (Incls. Items 14, 16, & 22) (Model 6614 ML-134096).....	1



### LOWER WIPER UNIT

## LOWER WIPER UNIT

ILLUS.	PART NO.	NAME OF PART	AMT.
	PL-55841		
1	00-290855	Shim – Wiper Support.....	AR
2	00-290798	Blade Wiper Assy.....	1
3	00-291831	Block – Pulley Wiper.....	1
4	00-102399	Pulley Wiper Assy. (Incls. Items 5 & 6).....	1
5	00-123886	Wiper – Pulley.....	1
6	SC-053-01	Mach. Screw 10-24 x 1/4 Truss Hd. ....	2
7	SC-022-34	Mach. Screw 1/4-20 x 7/8 Slotted Flat Hd. (SST).....	2
8	00-290822	Support – Wiper.....	1
9	00-291809	Shield – Blade Guide.....	1
10	SC-041-86	Cap Screw 1/4-20 x 3/8 Hex Hd.....	2
11	WS-003-49	Washer.....	2
12	NS-025-04	Acorn Nut 1/4-20.....	2
13	00-875234-00002	Holder – Lower Guide.....	1
14	SC-116-26	Cap Screw 1/4-28 x 7/8 Hex Hd.....	2
15	00-875235	Cover – Guide.....	1
16	00-291658	Guide – Plastic.....	1
17	00-291670-00001	Guide – Saw Blade (0.022" Blade).....	1
18	00-291670-00002	Guide – Saw Blade (0.014" Blade).....	1
19	00-291670-00003	Guide – Saw Blade (0.038" Blade).....	1
20	00-291670-00004	Guide – Saw Blade (0.020" Blade).....	1
21	00-875246	Support.....	1
22	SC-041-50	Cap Screw 1/4-20 x 1/2 Hex Hd.....	2
23	WS-003-49	Washer.....	AR
24	00-290798	Blade Wiper Assy.....	1
25	SC-022-34	Mach. Screw 1/4-20 x 7/8 Slotted Flat Hd. (SST).....	2
26	00-290822	Support – Wiper.....	1
27	00-290855	Shim – Wiper Support.....	AR
28	SC-041-50	Cap Screw 1/4-20 x 1/2 Hex Hd.....	2
29	WS-003-49	Washer.....	2
30	NS-025-04	Acorn Nut 1/4-20.....	2
31	WS-003-49	Washer.....	2
32	SC-041-86	Cap Screw 1/4-20 x 3/8 Hex Hd.....	2
33	WL-006-17	Lockwasher 1/4 Medium (Model 6614 ML-134096).....	2
34	NS-025-04	Acorn Nut 1/4-20.....	2
35	SC-025-07	Mach. Screw 10-24 x 5/16 Bndg. Hd.....	2
36	00-290788	Clip – Cover.....	1
37	NS-025-01	Nut – Crown 10-24.....	2
38	WL-006-06	Lockwasher #10 Light.....	2
39	NS-025-04	Acorn Nut 1/4-20.....	2
40	WS-003-49	Washer.....	2
41	SC-041-50	Cap Screw 1/4-20 x 1/2 Hex Hd.....	2
42	00-875082	Baffle – Lower Pulley (Model 6614 ML-134096).....	2
43	00-290851-00002	Baffle – Lower Pulley (Model 6801 ML-134094).....	1
	00-291672-00001	Holder & Guide Assy. (Incls. Items 13 thru 17).....	1
	00-291672-00002	Holder & Guide Assy. (Incls. Items 13 thru 16 & 18).....	1
	00-291672-00003	Holder & Guide Assy. (Incls. Items 13 thru 16 & 19).....	1
	00-291672-00004	Holder & Guide Assy. (Incls. Items 13 thru 16 & 20).....	1



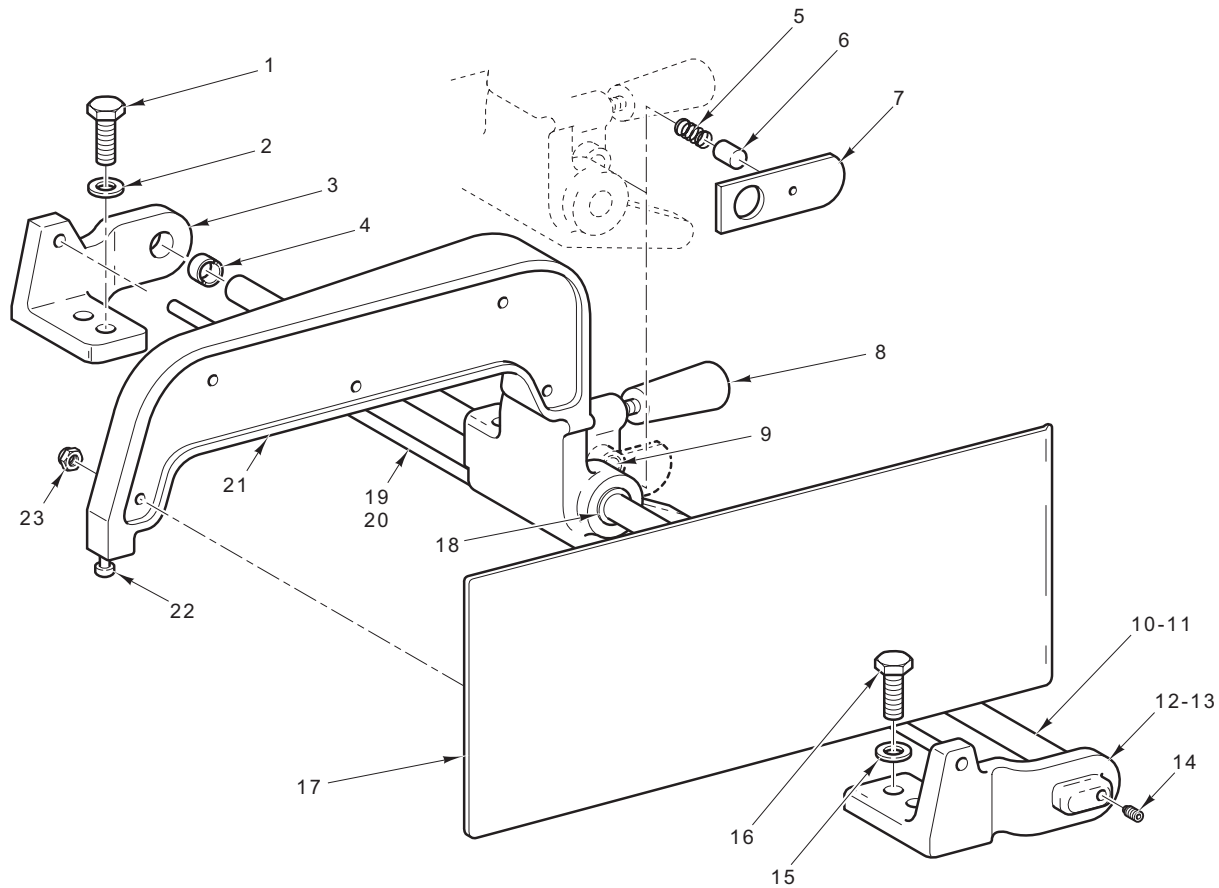
PL-55843

**ELECTRICAL UNIT**

## ELECTRICAL UNIT

ILLUS.	PART NO.	NAME OF PART	AMT.
PL-55843			
1	SC-025-33	Mach. Screw 8-32 x 1/2 Bndg. Hd.....	2
2	NS-048-85	Nut Assy. 8-32.....	2
3	FE-019-48	Fuse (0.8 Amp., 600 V.).....	2
4	00-120907-00001	Transformer (50 VA.).....	1
5	00-114707	Fuse Board.....	1
6	NS-011-12	Nut 8-32 Hex.....	3
7	WS-023-22	Washer.....	3
8	00-078752-00009	Clamp – Cable.....	3
*9	-	Heater – Element (Overload Relay).....	AR
10	00-088196-009-1	Relay – Thermal Overload (3 Ph.) (W/Overload Protection).....	1
11	SD-015-20	Self-Tapping Screw 10-32 x 3/8 Phil. Pan Hd., Type TT.....	2
12	SD-015-20	Self-Tapping Screw 10-32 x 3/8 Phil. Pan Hd., Type TT.....	2
13	00-290889	Cable & Eyelet Assy. (Panel to Column).....	1
14	00-087713-102-1	Contactory Assy. (3-Pole) (200-230 V.).....	1
15	00-087713-102-2	Contactory Assy. (3-Pole) (460 V.).....	1
16	SD-015-20	Self-Tapping Screw 10-32 x 3/8 Phil. Pan Hd., Type TT.....	2
17	00-108199-00001	Clamp – Air Heater.....	1
18	00-122345-00001	Heater Assy. (460 V.).....	1
19	00-122345-00002	Heater Assy. (200-230 V.).....	1
20	00-121543	Shield – Heater.....	1
21	00-123241-00001	Bracket – Switch.....	1
22	00-873781	Actuator Switch.....	1
23	PC-005-08	Cotter Pin 3/32 x 5/8 Lg.....	1
24	00-121827	Ring – Locking.....	1
25	00-875567	Switch Assy.....	1
26	SC-053-05	Mach. Screw 10-24 x 5/8 Truss Hd.....	2
27	00-121547	Spring – Compression.....	1
28	00-875049	Retaining Ring.....	1
29	WS-018-30	Washer.....	1
30	00-290883	Bushing – Switch Shaft.....	1
31	00-290882	Shaft – Switch.....	1
32	00-291475	Label – Start/Stop.....	1
33	00-290885	Knob – Switch.....	1
34	FE-026-13	Connector 1/2 (Metallic) Sealtite.....	1
35	00-557247	Conduit – Electrical.....	1
36	00-543430	Conduit – Electrical.....	1
37	FE-026-13	Connector 1/2 (Metallic) Sealtite.....	1

\*Give Elec. Spec., Mach. Model, &amp; Motor Type.



PL-55844

**GAUGE PLATE UNIT**

ILLUS.	PART NO.	NAME OF PART	AMT.
	PL-55844		
1	SC-041-31	Cap Screw 3/8-16 x 1 1/4 Hex Hd.....	2
2	WS-018-40	Washer.....	2
3	00-873713-00002	Support – Rear Rod.....	1
4	00-479644	Bearing – Sleeve.....	2
5	00-291933	Spring – Gauge Plate Lock.....	1
6	00-291932	Pin – Locking Lever.....	1
7	00-290769	Lever – Locking.....	1
8	00-070194	Handle – Gauge Plate.....	1
9	00-110544-00010	Bushing – Gauge Plate Frame.....	1
10	00-290770-00003	Shaft – Gauge Plate (Model 6614 ML-134096).....	1
11	00-290770	Shaft – Gauge Plate (Model 6801 ML-134094).....	1
12	00-873712-00002	Front Shaft & Rod Support Assy. (Incls. Items 13 & 14).....	1
13	PG-006-11	Pin – Groove 1/4 x 5/8 Type D.....	1
14	SC-064-27	Set Screw 5/16-18 x 1/2 Soc. Hdls., Cup Pt. Nylok.....	1
15	WS-018-40	Washer.....	2
16	SC-041-31	Cap Screw 3/8-16 x 1 1/4 Hex Hd.....	2
17	00-291431	Plate and Stud Assy.....	1
18	00-110544-00009	Bushing – Gauge Plate Frame.....	2
19	00-290758-00004	Rod – Table Anchor (Right Table) (Model 6614 ML-134096).....	1
20	00-290758-00002	Rod – Table Anchor (Right Table) (Model 6801 ML-134094).....	1
21	00-291944	Gauge Plate Assy. (Incls. Items 9, 17, 18, 22, & 23).....	1
22	00-290764	Button – Glide.....	1
23	NS-025-04	Acorn Nut 1/4-20.....	5
	00-292347	Gauge Plate Assy. (Incls. Items 5, 6, 7, 17, 21, & 22) (Packaged).....	1



# Online Parts Catalog

*Note: It is helpful, but not essential to know the ML (Material List) Number of the equipment for which a part is needed*

**How Do I Find An ML Number?**

The ML Number is found on the machine dataplate. The dataplate resembles the sample below, and is generally located on the back or side of a machine.

<b>HOBART</b> CORPORATION		MODEL	ML
COMMERCIAL DISHWASHER TROY, OHIO			
LISTED 756A C	UL	US	NSF
VOLTS		DATE CODE:	
HZ	PH	AMP	
749901 MADE IN U.S.A.			

- Section 1 – If Equipment ML Number is known
- Section 2 – If Equipment ML Number is not known



PRODUCT DIRECTORY | [Locate an Office](#) | [Warranty Registration](#) | [Career Opportunities](#)

SERVICE | **PARTS** | INSTALLATIONS | WATER TREATMENT | MANUALS & SUPPORT | CONTRACTS & PMs



### Hobart Service

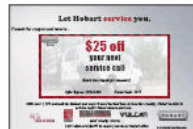
We're there for you, anytime you need us. 24x7.



We're within 50 miles of 95% of our service customers. Only Hobart can provide such blanket coverage because we're the premier equipment manufacturer with nearly 200 offices and 1,700

### Hobart Service News & Offers

Get \$25 Off Your Next Service Call!



From [hobartservice.com](http://hobartservice.com)  
select  
**PARTS**



PRODUCT DIRECTORY | [Locate an Office](#) | [Warranty Registration](#) | [Career Opportunities](#)

SERVICE | **PARTS** | INSTALLATIONS | WATER TREATMENT | MANUALS & SUPPORT | CONTRACTS & PMs



[Hobart Service Home](#) > **Hobart National Parts and Accessories Program**

### National Parts and Accessories Program

#### Hobart SmartParts® System

The [Hobart SmartParts® System](#) is an interactive parts catalog system. By entering information from your equipment's data plate, you can be assured that you are accessing the



#### Not Sure How to Use SmartParts™?

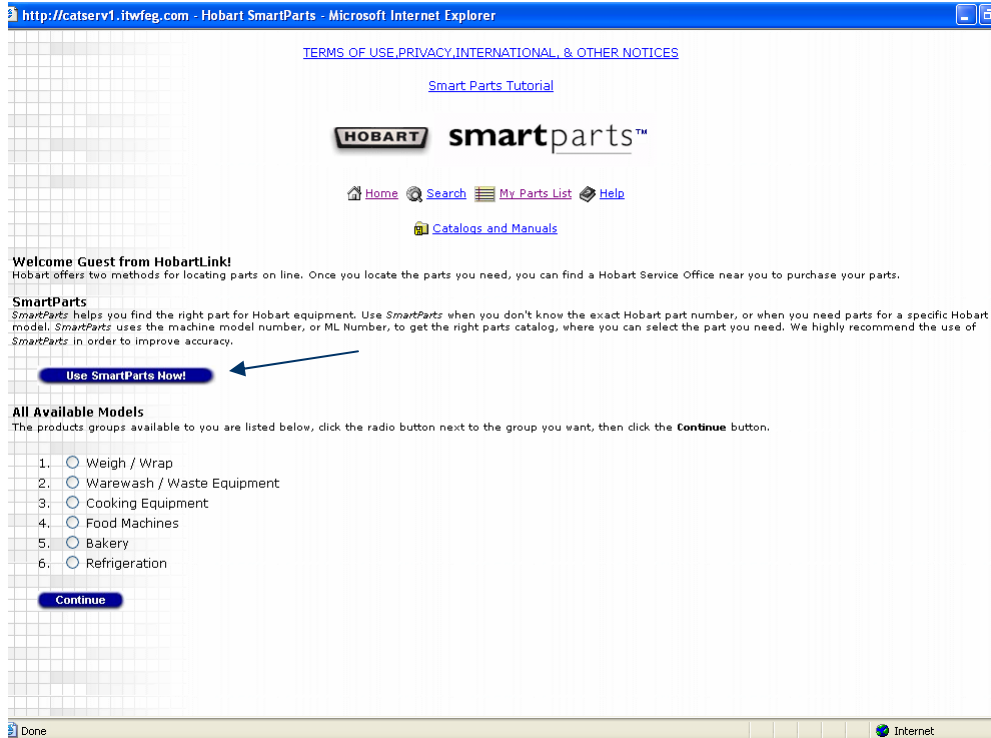
It's easy! Just go through the [Hobart SmartParts™ Online Tutorial](#) and you'll be a parts pro in no time!

#### Hobart Parts QuickLinks

- ▶ [Hobart SmartParts® System](#)
- ▶ [Parts Catalogs](#)

Next  
select  
**SMARTPARTS**

Web Browser Pop-up blocker must be turned off for this site in order for SmartParts to operate



*This is SmartParts home page*

***If the ML Number of the Equipment is known, select Use SmartParts Now***

*(We'll explain what to do if the ML number of the Equipment is not known in Section 2)*

## SmartParts

### Enter Your ML Number

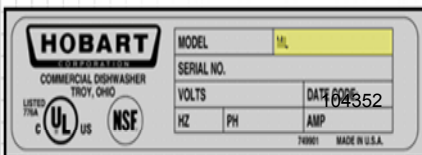
Enter your full or partial ML Number in the field provided, then click the **Search SmartParts!** button.

ML-  **Search Smart Parts**

*Enter the ML number and click on Search SmartParts*

### How Do I Find An ML Number?

The ML Number is found on the machine dataplate. The dataplate resembles the sample below, and is generally located on the back or side of a machine.



**For this example, the part needed is a Water Pressure Gauge used on the LX 30 Undercounter Dishwasher**

**The ML number of this dishwasher is 104352**

# Hobart Parts Web

## SmartParts

SmartParts results for **104352** (listed by product group):

### Warewash / Waste Equipment

- LX Series Dishwashers (Includes ML numbers 104349, 104350, 104351, 104352, 130016, 130017, 130018, 130019)

Continue

Go Back

*Click on the Radio button to select the Parts Catalog*

*Then click on Continue*

## Assemblies Available

LX Series Dishwashers (Includes ML numbers 104349, 104350, 104351, 104352, 104353, 104354, 104355, 104356, 110380, 110381, 130016, 130017, 130018, 130019)

Click the radio button next to the assembly you want, then click the **Continue** button.

Continue

Go Back

- BASE ASSEMBLY
- TANK ASSEMBLY
- DOOR ASSEMBLY
- ELECTRICAL CONTROL DRAWER (LX SERIES)
- ELECTRICAL CONTROL DRAWER (LXi SERIES)
- DISPLAY
- WASH ARM ASSEMBLY (LX18 SERIES)
- WASH ARM ASSEMBLY (LX30/40, LXG, LXI, & LXIG SERIES)
- WASH PIPE ASSEMBLY
- 50 HZ., 60 HZ. PUMP AND MOTOR ASSEMBLY (INGERSOLL OR CRANE)

*The Water Pressure Gauge is on the Base Assembly*

*Select Base Assembly*

*Then click on Continue*

# Parts List

## BASE ASSEMBLY

Select an appropriate figure size

Change To:

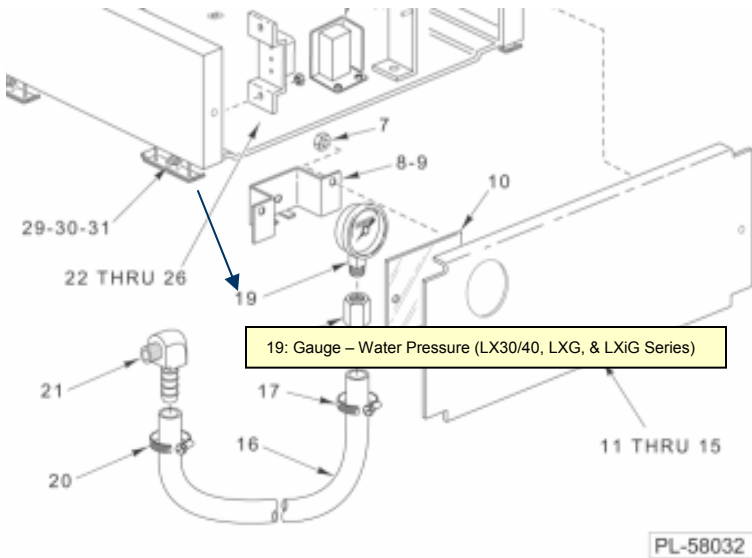
Different Assembly

Different Product

To add an item to your parts list, click the **Add** button next to the item. To see an exploded view, click on the view figure buttons.

View Figure: @ 25% @ 50% @ 75% @ 100% ←

Add	Item	Part No.	Part Description	Qty Used On Assembly
<a href="#">Add</a>	1	00-328634	Track Assy. (RH)	1
<a href="#">Add</a>	2	NS-015-01	Nut 1/4-20 Hex (SST)	8
<a href="#">Add</a>	3	WL-006-17	Lockwasher 1/4 Medium	8



BASE ASSEMBLY

Locate the part needed (Water Pressure Gauge) on the drawing

Placing the cursor on the number will display the Description of the Part

Click on the number pointing to the part

<b>Add</b>	15	00-329267	Retainer - Screw #10	AR
<b>Add</b>	16	00-475060	Hose 1/4 x 12 Pressure Gauge to Fill Valve	1
<b>Add</b>	17	00-528501	Clamp - Hose #4	1
<b>Add</b>	18	FP-088-30	Fitting - Hose Barb (LX30/40, LXG, & LXi Series)	1
<b>Add</b>	19	00-918429	Gauge - Water Pressure (LX30/40, LXG, LXi, & LXiG Series)	1
<b>Add</b>	20	00-528501	Clamp - Hose #4	1
<b>Add</b>	21	FP-088-29	Fitting - Hose 1/4 Barb x 1/8-27 NPTM	1
<b>Add</b>	22	SC-018-24	Mach. Screw 6-32 x 3/4 Phil. Pan Hd.	2
<b>Add</b>	23	00-918385	Block - Terminal (5 Pole) (Current Construction)	1
<b>Add</b>	24	00-918339	Bracket - Terminal Block (Current Construction)	1
<b>Add</b>	25	NS-031-50	Stop Nut 6-32 Hex (SST)	2
<b>Add</b>	26	NS-031-16	Stop Nut 10-24 Hex Elastic (SST)	2
<b>Add</b>	27	00-475299-00001	Connector Assy. (Previous Construction)	1
<b>Add</b>	28	00-473138	Bracket - Terminal Block (Previous Construction)	1
<b>Add</b>	29	00-241857	Foot - Leveling	4
<b>Add</b>	30	00-329284	Spacer - Leveling Foot (LX18 Series)	4

- *Selecting the part on the figure causes the part to be highlighted on the parts list*
- *Click on the Add button to add the part to the shopping cart*
- *You can add more parts or change the quantity of the parts already in the cart*
- *When finished, click on the Confirm Parts Selected and then on Print Parts List if you want to print*

## Parts Selected

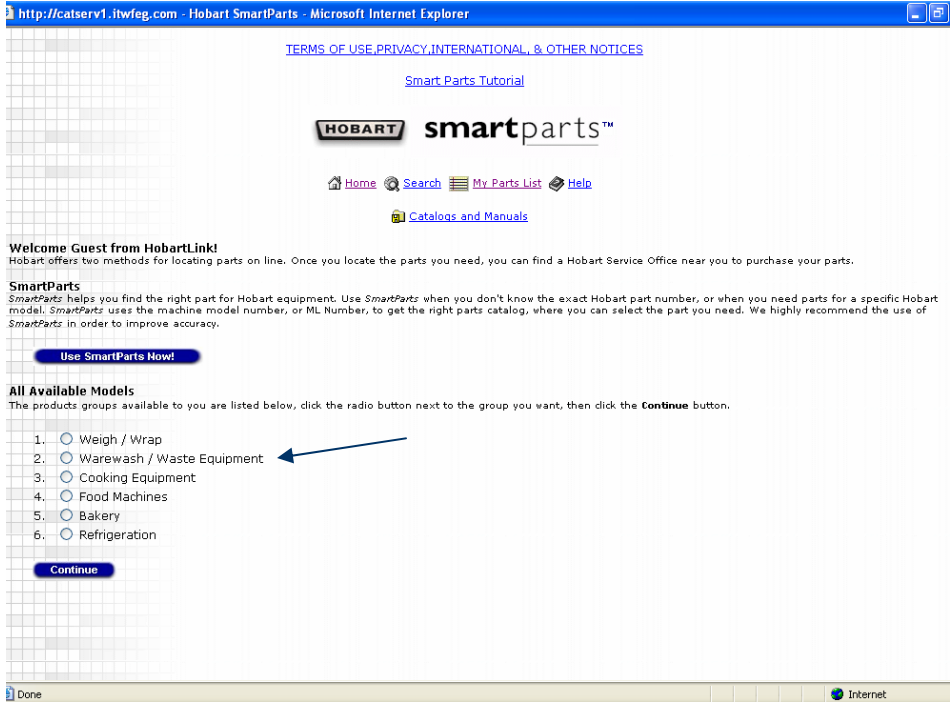
### Items Listed for Guest

Add More Items From:

There is 1 item in your parts list:

Delete	Qty. Req.	Part No.	Part Description	Parts List
<input type="button" value="Delete"/>	<input type="text" value="1"/>	00-918429	Gauge - Water Pressure (LX30/40, LXG, LXi, & LXiG Series)	<a href="#">BASE ASSEMBLY</a>

Use SMARTPARTS Now



*This (again) is SmartParts home page*

For this example, the part needed is a Water Pressure Gauge used on the LX 30 Undercounter Dishwasher

*If the ML Number of the Equipment is not known, click on the Radio button to select Warewash / Waste Equipment*

*Then click on Continue*

*(Go to Section 1 if you do know the ML number of the Equipment)*

Section 2 – If Equipment ML Number is not known

## Products Available

### Warewash / Waste Equipment

Click the radio button next to the product you want, then click the **Continue** button.

**Continue** **Go Back**

- 1.  Door Type Dishwasher
- 2.  Booster
- 3.  Conveyor Type Dishwasher (C-LINE)
- 4.  Flight Type Dishwasher
- 5.  Miscellaneous Warewash
- 6.  UnderCounter Dishwasher (indicated by a blue arrow)
- 7.  Waste Equipment

**Continue** **Go Back**

*Click on the Radio button to select UnderCounter Dishwasher*

*Then click on Continue*

## Parts Catalogs

### UnderCounter Dishwasher

Click the radio button next to the catalog you want, then click the **Continue** button.

**Continue** **Go Back**

- LX Series Dishwashers (Includes ML numbers 104349, 104350, 104351, 104352, 104353, 104354, 104355, 104356, 110380, 110381, 130016, 130017, 130018, 130019)
- WM Series Dishwashers
- Dishwasher Motor Book (Includes the following Motor Spec /ML numbers - 9257, 6661, 8115, 17829, 18897, 18751, 18931, 18930, 18932, 31219, 31220, 31221, 18491, 17350, 9801, 18603)
- SR24 Series Dishwasher (SR24C - ML-130021, SR24H - ML-130022)
- Fast Food Warewashers

**Continue** **Go Back**

*Click on the Radio button to select LX Series Dishwashers*

*Then click on Continue*

### Assemblies Available

**LX Series Dishwashers (Includes ML numbers 104349, 104350, 104351, 104352, 104353, 104354, 104355, 104356, 110380, 110381, 130016, 130017, 130018, 130019)**

Click the radio button next to the assembly you want, then click the **Continue** button.

**Continue** **Go Back**

- BASE ASSEMBLY
- TANK ASSEMBLY
- DOOR ASSEMBLY
- ELECTRICAL COMPONENTS(LX SERIES)
- ELECTRICAL COMPONENTS (LXi SERIES)
- DISPLAY
- WASH AND RINSE ARM ASSEMBLY(lx30/40, lxxg, lxi, & lxiig SERIES)(PREV. CONSTR.)
- WASH AND RINSE ARM ASSEMBLY(lx30/40, lxxg, lxi, & lxiig SERIES)(CURRENT CONSTR.)
- WASH ARM ASSEMBLY(LX18 SERIES)
- WASH PIPE ASSEMBLY (PREVIOUS CONSTRUCTION)
- WASH PIPE ASSEMBLY (CURRENT CONSTRUCTION)

*The Water Pressure Gauge is on the Base Assembly*

*Select Base Assembly*

*Then click on Continue*



# Parts List

## BASE ASSEMBLY

Select an appropriate figure size

Change To:

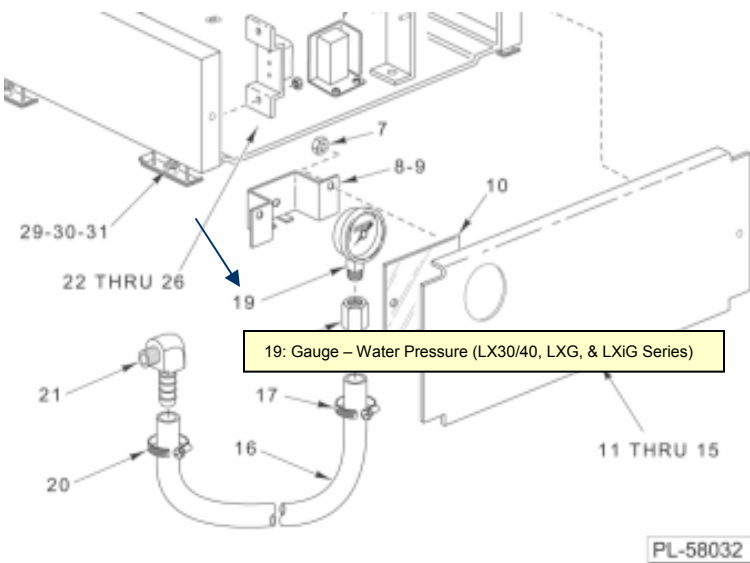
Different Assembly

Different Product

To add an item to your parts list, click the **Add** button next to the item. To see an exploded view, click on the view figure buttons.

View Figure: @ 25% @ 50% @ 75% @ 100% ←

Add	Item	Part No.	Part Description	Qty Used On Assembly
Add	1	00-328634	Track Assy. (RH)	1
Add	2	NS-015-01	Nut 1/4-20 Hex (SST)	8
Add	3	WL-006-17	Lockwasher 1/4 Medium	8



## BASE ASSEMBLY

Locate the part needed (Water Pressure Gauge) on the drawing

Placing the cursor on the number will display the Description of the Part

Click on the number pointing to the part

<b>Add</b>	15	00-329267	Retainer - Screw #10	AR
<b>Add</b>	16	00-475060	Hose 1/4 x 12 Pressure Gauge to Fill Valve	1
<b>Add</b>	17	00-528501	Clamp - Hose #4	1
<b>Add</b>	18	FP-088-30	Fitting - Hose Barb (LX30/40, LXG, & LXI Series)	1
<b>Add</b>	19	00-918429	Gauge - Water Pressure (LX30/40, LXG, LXI, & LXIG Series)	1
<b>Add</b>	20	00-528501	Clamp - Hose #4	1
<b>Add</b>	21	FP-088-29	Fitting - Hose 1/4 Barb x 1/8-27 NPTM	1
<b>Add</b>	22	SC-018-24	Mach. Screw 6-32 x 3/4 Phil. Pan Hd.	2
<b>Add</b>	23	00-918385	Block - Terminal (5 Pole) (Current Construction)	1
<b>Add</b>	24	00-918339	Bracket - Terminal Block (Current Construction)	1
<b>Add</b>	25	NS-031-50	Stop Nut 6-32 Hex (SST)	2
<b>Add</b>	26	NS-031-16	Stop Nut 10-24 Hex Elastic (SST)	2
<b>Add</b>	27	00-475299-00001	Connector Assy. (Previous Construction)	1
<b>Add</b>	28	00-473138	Bracket - Terminal Block (Previous Construction)	1
<b>Add</b>	29	00-241857	Foot - Leveling	4
<b>Add</b>	30	00-329284	Spacer - Leveling Foot (LX18 Series)	4

- *Selecting the part on the figure causes the part to be highlighted on the parts list*
- *Click on the Add button to add the part to the shopping cart*
- *You can add more parts or change the quantity of the parts already in the cart*
- *When finished, click on the Confirm Parts Selected and then on Print Parts List if you want to print*

## Parts Selected

### Items Listed for Guest

Add More Items From:

**Current Assembly**

**Different Assembly**

**Different Product**

There is 1 item in your parts list:

Delete	Qty. Req.	Part No.	Part Description	Parts List
<b>Delete</b>	<input type="text" value="1"/>	00-918429	Gauge - Water Pressure (LX30/40, LXG, LXI, & LXIG Series)	<a href="#">BASE ASSEMBLY</a>

**Update Quantities**

**Confirm Parts Selected**

Use **SMARTPARTS** Now



**6801 MEAT SAW**  
**JANUARY 2010**

PRODUCT SERVICE DEPARTMENT

TROY, OH. 45374-0001

## RECOMMENDED SPARE PARTS LIST

### 6801 MEAT SAW

Qty	Part Number	Description
1	437392	Wiper Kit
1	875040	Lower Cover
1	437301-1	Motor
1	ML-104999-Z	Pulley Upper
1	ML109653-Z	Pulley
1	875150	Latch
1	436447	Grove Pin
2	BB-8-11	Bearings
1	435958-2	Positioning Knob
1	875567	Switch
1	87713-102-1	Contactactor
3	112235-38	Heater
1	88196-9-1	Overload Relay