

# Quick Guide To Using SVR-3200/1680C/1660C/1645

## PRIOR TO USING THE PRODUCT

This is a quick guide covering some of the more frequently used features only. For more accurate and detailed information about the product, please refer to the User's Manual.

## BUTTONS

- |                   |                 |                |
|-------------------|-----------------|----------------|
| ① DVD             | ② Jog/Shuttle   | ⑤ Multi Screen |
| ③ Select Channel  | ④ Auto Sequence | ⑧ Save         |
| ⑥ Menu            | ⑦ Search        | ⑪ USB          |
| ⑨ UP/PAUSE        | ⑩ Power         |                |
| ⑫ PTZ             | ⑬ Monitor(SPOT) |                |
| ⑭ Select Function | ⑮ COPY          | ⑯ ESC          |
| ⑰ LEFT/REW        | ⑱ DOWN/STOP     | ⑲ RIGHT/FWD    |
| ⑳ ENTER/PLAY      |                 |                |



## USING JOG/SHUTTLE

### Shuttle

Use it to control playback direction (forward/reverse) or speed (X2, X4, X8, X16, X32, X64).

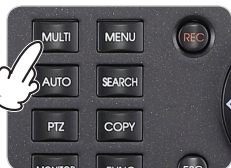
### Jog Dial

Use it for frame-by-frame search of video recordings.

※ SVR-3200/1680/1660/1645

## PRODUCT FEATURES

### 1. Live Monitoring



#### Multi Screen

With each pressing of the Multi Screen button, the screen splits into 4, 9, 10 or 16 screens respectively.



#### Single Screen

Press a channel button to see the respective channel only on the screen.

### 2. Recording



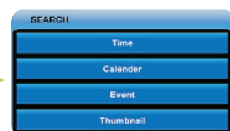
Press the REC button to start or stop recording. REC lamp located on the top of the REC button will display recording status.

(Caution: the REC button function interacts with the Scheduled Recording settings.)

### 3. Search/Playback Recordings



#### Search button



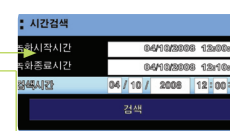
#### Select Search Mode



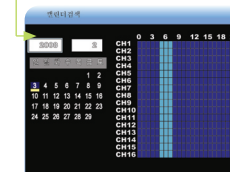
Event search: Enter Date/Time & Select Event



Thumbnail search: Enter Channel/ Date/Time



Time search: Enter Date/Time



Calendar search: Select Date/Time

### 4. Playback Buttons

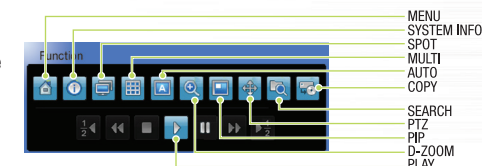


- PAUSE: Pause playback
- REW: Rewind playback & Rewind speed (X1/2, X1, X2, X4, X8, X16, X32, X64)
- PLAY: Start playback
- FWD: Forward playback & Forward speed (X1/2, X1, X2, X4, X8, X16, X32, X64)
- STOP: Stop playback

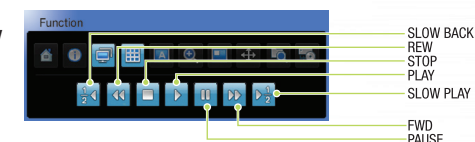
### 5. Hot Function(Hot Key) Menu

Press the Function button (FUNC) or right-click the mouse to use Hot Function icons.

- Function Key on Live Mode



- Function Key on Play Mode



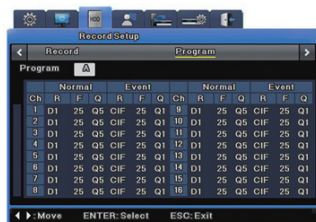
1. Press the Search button
2. Select either the Time, calendar, Event or thumbnail search
3. Enter Date/Time or select an calendar/date/time
4. Select the Search Button

# Quick Guide To Using SVR-3200/1680C/1660C/1645

## RECORDING FUNCTION

SAMSUNG DVR provides several different recording methods. You can easily select and set any recording method that is most suitable for your environment or needs.

### [Program Setup]



⚠ Complete program setup before recording setup.

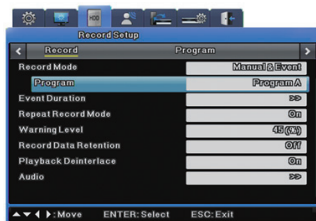
#### Key Button

Select **MENU** ▶ Record Setup ▶ Program

- You can specify resolution (R), frame rate (F), and quality (Q) for each channel for normal operation and when events occur.

### 1. Manual Recording Setup

You can set record to start when a user presses the [REC] button on the front.



#### Key Button

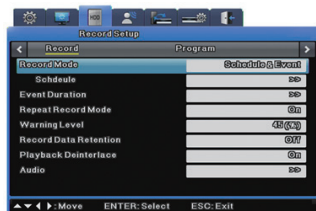
Select **MENU** ▶ Record Setup ▶ Record

- Record Mode : Set manual & event recording.
- Program : Set a Program.

### 2. Schedule Recording Setup

Scheduled recording lets you choose the date and time to record.

#### STEP 1 : Record mode settings

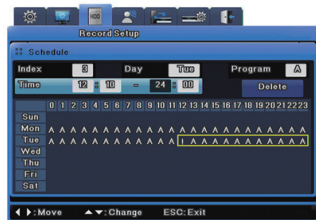


#### Key Button

Select **MENU** ▶ Record Setup ▶ Record

- Record Mode : Set the Schedule & Event.
- Schedule >>

#### STEP 2: Schedule settings



#### Key Button

Select **MENU** ▶ Record Setup ▶ Record

- Index : Up to 50 different programs can be set.
- Day : Set a recording date.
- Program : Select a recording program (A~T).
- Time : Set a recording time.
- Delete : Delete an Index.

### 3. Event Recording Setup

#### STEP 1 : Event check settings



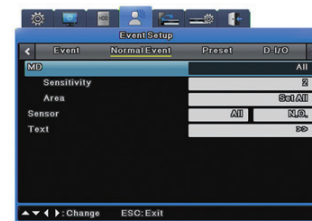
#### Key Button

Select **MENU** ▶ Event Setup ▶ Event

- Time for event recording
  - Always
  - Timezone : For specified time only.
  - Off : Not using event record.

#### STEP 2 : Event settings

\* Set the general event (MD/Sensor/Text/Audio) for event recording. For more information, please refer to the user manual.



#### Key Button

Select **MENU** ▶ Event Setup ▶ Normal Event

- MD : Set the event recording channel.
- Sensitivity : Set sensitivity levels from Lowest/1~10/Highest.
- Area : Set user defined parameters.

\* Event recording, manual recording and scheduled recording can be used at the same time. Only Event Record is needed : Program > General > Channel > Frame Rate > Ofps.

### 4. Copy (Back-up)

HDD content can be stored in other storage medium including DVD-R, CD-R and USB memory stick.



#### Key Button

- Press COPY button after inserting a storage device
- Select Type (CD/DVD, RE4, AVI)
- Select Channel
- Enter From/To Time
- Select Start Button

#### Recommended media

- DVD-R : Mitsubishi, TDK, imation, Sony (16X recommended)
- CD-R : Mitsubishi, TDK, imation, Sony (16X recommended)
- USB memory stick : SanDisk (1GB, 2GB, 4GB, 8GB recommended)

\* **Caution** : Using authentic and new media products is recommended. If DVD-R or CD-R is over a long period of time, errors may occur.



CD/DVD COPY