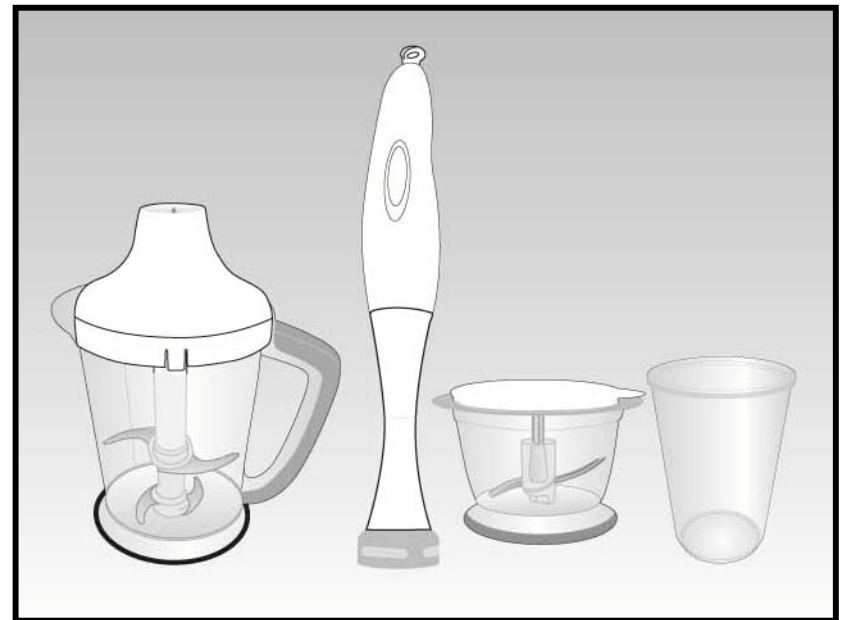




OWNER'S MANUAL

Model SB212H
120V, 60Hz., 275 Watts

Stick Blender



EURO-PRO Operating LLC
94 Main Mill Street, Door 16
Plattsburgh, NY 12901
Tel.: 800-798-7398





ONE (1) YEAR LIMITED WARRANTY

EURO-PRO Operating LLC warrants this product to be free from defects in material and workmanship for a period of one (1) year from the date of purchase when utilized for normal household use.

If your appliance fails to operate properly while in use under normal household conditions within the warranty period, return the complete appliance and accessories, freight prepaid to **EURO-PRO Operating LLC**, 94 Main Mill Street, Door 16, N.Y. 12901. If the appliance is found to be defective in material or workmanship, **EURO-PRO Operating LLC** will repair or replace it free of charge. Proof of purchase date and \$15.95 to cover the cost of return shipping and handling must be included.*

The liability of **EURO-PRO Operating LLC** is limited solely to the cost of the repair or replacement of the unit at our option. This warranty does not cover normal wear of parts and does not apply to any unit that has been tampered with or used for commercial purposes. This limited warranty does not cover damage caused by misuse, abuse, negligent handling or damage due to faulty packaging or mishandling in transit.

This warranty is extended to the original purchaser of the unit and excludes all other legal and/or conventional warranties. The responsibility of **EURO-PRO Operating LLC** if any, is limited to the specific obligations expressly assumed by it under the terms of the limited warranty. **In no event** is **EURO-PRO Operating LLC** liable for incidental or consequential damages of any nature whatsoever. Some states do not permit the exclusion or limitation of incidental or consequential damages, so the above may not apply to you.

This warranty gives you specific legal rights, and you may also have other rights which vary from state to state.

***Important: Carefully pack item to avoid damage in shipping. Be sure to include proof of purchase date and to attach tag to item before packing with your name, complete address and phone number with a note giving purchase information, model number and what you believe is the problem with item. We recommend you insure the package (as damage in shipping is not covered by your warranty). Mark the outside of your package "ATTENTION CUSTOMER SERVICE". We are constantly striving to improve our products, therefore the specifications contained herein are subject to change without notice.**



OWNERSHIP REGISTRATION CARD

Please fill out and mail the product registration card within ten (10) days of purchase. The registration will enable us to contact you in the unlikely event of a product safety notification. By returning this card you acknowledge to have read and understood the instructions for use, and warnings set forth in the accompanying instructions.

RETURN TO **EURO-PRO Operating LLC**, 94 Main Mill Street, Door 16, Plattsburgh, N.Y. 12901

Model SB212H

Appliance model

Date purchased

Name of store

Owner's name

Address

City

State

Zip code

OPERATING INSTRUCTIONS

Care & Maintenance

Caution: Ensure that the appliance is unplugged from the electrical power source before changing or cleaning attachments. Do not immerse the mixer gear box in water.

1. The unit and the various attachments should be cleaned after each use.
2. All accessories and containers can be cleaned with warm soapy water.
3. Use a damp cloth or sponge to clean the housing of the power pack. Do **NOT** immerse in water or any other liquid.

Caution: Use extreme caution when cleaning the chopper blade or metal stick blender because blades are **SHARP**.

Storing Your Unit

You may store your unit in the wall bracket provided. Do **NOT** wrap power cord around unit. Coil the cord in loose loops and tie with a tie wrap or twist tie.

It is recommended that the chopping blades be stored inside the containers as the blades are very sharp.

Wall Bracket

A wall bracket is provided with your Stick Blender. Install the wall bracket in any convenient location using the wall anchors and screws (included). (Fig. 14) The Power Pack with or without the Stick Blender attachment may then be conveniently stored out of the way.

Important: Install wall mount bracket high enough above countertop to allow for clearance of power pack with stick blender attached.

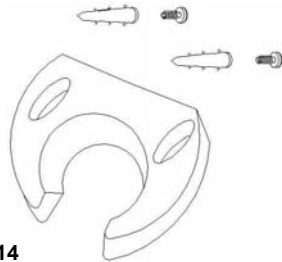


Fig. 14

IMPORTANT SAFETY INSTRUCTIONS

When using your **Stick Blender**, basic safety precautions should always be observed, including the following:

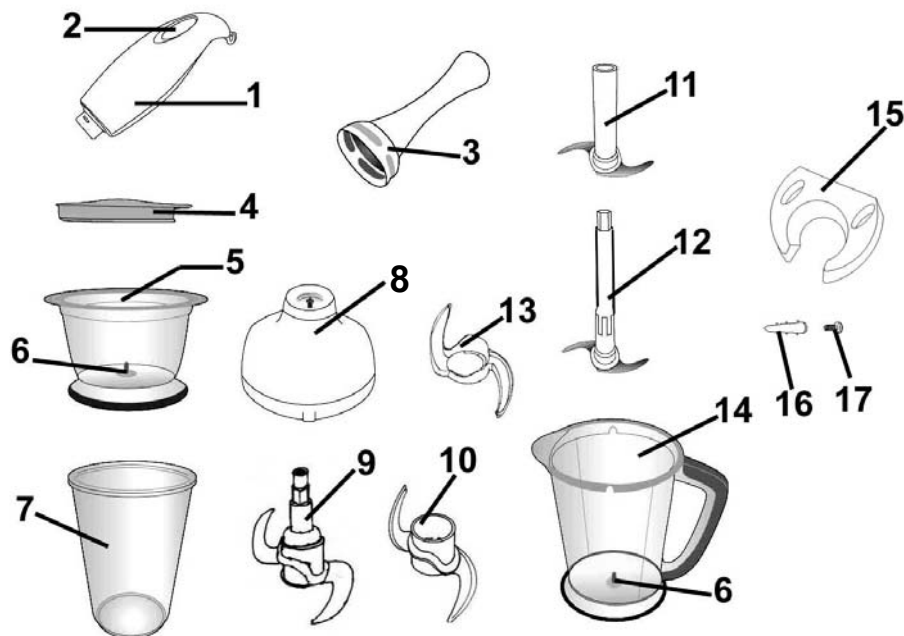
1. Read all instructions before using your **Stick Blender**.
 2. Close supervision is necessary when any appliance is used by or near children.
 3. To protect against electric shock, **DO NOT** immerse cord, plug or any part of the main unit in water or any other liquids.
 4. **DO NOT** let cord hang over edge of table or counter, or touch hot surfaces.
 5. **DO NOT** operate appliance with damaged cord or plug or after the appliance malfunctions or has been damaged in any manner. Return appliance to **EURO-PRO Operating LLC** for examination, repair or adjustment.
 6. Unplug appliance from outlet when not in use and before cleaning.
 7. **DO NOT** place on or near a hot gas or electric burner.
 8. The use of accessory attachments not recommended by **EURO-PRO Operating LLC** may cause fire, electrical shock or risk of personal injury.
 9. **Never** place processing jar or bowl in microwave oven.
 10. Extreme caution must be used when moving an appliance containing hot food, water or other liquids.
 11. Use this appliance on a stable work surface away from water.
 12. **DO NOT** remove the main unit before the chopping blades have stopped turning.
 13. **CAUTION!** Chopping blades are sharp, handle with care. When handling the chopper blade, always hold by the plastic hub.
 14. Make sure that the main unit is secured in place before operating appliance.
 15. **DO NOT** expose processing jar or chopping bowl to extreme temperature changes.
 16. **DO NOT** use processing jar or chopping bowl if it is cracked or chipped.
 17. **DO NOT** use the appliance if chopping blades are bent or damaged.
 18. Avoid contact with moving parts at all times. Keep hands, hair, clothing as well as spatulas and other utensils away from blender during operation to prevent risk of personal injury and/or damage to the appliance.
 19. Exercise extreme caution when blending hot liquids.
 20. Immediately switch appliance OFF in the event that the appliance malfunctions during use.
 21. **DO NOT** use outdoors.
 22. **DO NOT** use appliance for other than intended use.
- This unit has a short power supply cord to Reduce the risk resulting from becoming entangled in or tripping over a long cord. An extension cord may be used if you are careful in its use:
1. The electrical rating of the extension cord should be at least as great as the electrical rating of the appliance.
 2. An extension cord with the power cord must be arranged so that it will not drape over the countertop or tabletop where they can be pulled on by children or tripped over accidentally.

SAVE THESE INSTRUCTIONS For Household Use Only



WARNING: To reduce the risk of electric shock, this appliance has a polarized plug (one blade is wider than the other). This plug will fit in a polarized outlet only one way. If the plug does not fit fully in the outlet, reverse the plug. If it still does not fit, contact a qualified electrician to install the proper outlet. Do not modify the plug in any way.

GETTING TO KNOW YOUR QUAD BLADE FOOD PROCESSOR



- | | |
|-----------------------------|--------------------------------|
| 1. 275 Watt Power Pack | 10. Chopping Bowl Upper Blade |
| 2. On/Off Pulse Button | 11. Processing Jar Upper Blade |
| 3. Stick Blender | 12. Processing Jar Main Blade |
| 4. Storage Lid | 13. Blade Guards (x4) |
| 5. Chopping Bowl | 14. Processing Jar |
| 6. Blade Locating Pin | 15. Wall Bracket |
| 7. Measuring Cup/Beaker | 16. Wall Anchors (x2) |
| 8. Chopper Gear Box | 17. Screws (x2) |
| 9. Chopping Bowl Main Blade | |

Technical Specifications

Voltage: 120V., 60Hz.
 Power: 275 Watts
 Processing Jar Capacity: 6 Cups (1500 ml)
 Chopping Bowl Capacity: 4 Cups (800 ml)

Illustrations may differ from actual product.

PROCESSING EXAMPLES WITH THE PROCESSING JAR:

The processing times indicated below are approximate and also depend on the quantity of the food to be processed and the degree of fineness you require.

INGREDIENTS	MAXIMUM QUANTITIES	OPERATION TIMES
Parsley	2.5 oz. (70 gr.)	10-15 seconds
Carrots	14 oz. (400 gr.)	10-15 seconds
Tomato (cut in small pieces)	22.9 oz. (650 gr.)	10 seconds
Fruits (Cut in small pieces)	17.5 oz. (500 gr.)	10 -15 seconds
Nuts	10.5 oz. 300 gr.)	5-10 seconds
Onions (cut in small pieces)	7 oz. (200 gr.)	5-10 seconds
Baby foods*	10.5 oz. (500 gr.)	10 seconds
Chopping Ice	6 oz. (170 gr.)	15 seconds

* Always allow food to cool before placing in the bowl.

PROCESSING EXAMPLES WITH THE CHOPPING BOWL:

The processing times indicated below are approximate and also depend on the quantity of the food to be processed and the degree of fineness you require.

INGREDIENTS	MAXIMUM QUANTITIES	OPERATION TIMES
Onions / Garlic	5.25 - 7 oz.	5-10 pulse
Soup	7 - 10.5 oz.	10 seconds continuous
Parsley	1.4 - 1.75 oz.	10 pulse
Nuts	3.5 - 7 oz.	5-10 pulse
Fruits	8.8 - 10.5 oz.	5-10 pulse
Baby foods*	8.8 - 10.5 oz.	5-10 pulse

* Always allow food to cool before placing in the bowl.

OPERATING INSTRUCTIONS

Using the Processor Jar or Chopping Bowl

- * Only process very soft, tender pieces of food.
- * Food pieces should not be larger than ¾-inch cubes.
- * Do not fill the processor jar or the chopping bowl more than half way with very soft, tender foods like cooked apples or tomatoes. When pureeing foods like cooked vegetables, only add a few pieces at a time so that the unit does not jam. It is best to batch feed when using this appliance.
- * Avoid pureeing foods like citrus fruits or other foods that have a lot of fiber or hard, tough skin which can jam the appliance.
- * Should the unit jam during use and the blade stops turning, cease operation and **unplug the unit from the power source**. Disassemble the unit to remove any food that is jammed.

Caution: Never put your fingers or any utensils in the Stick Blender during operation.

Note: This appliance is designed for intermittent use. Maximum running time with the chopper is 15 seconds. Allow unit to cool before resuming use. Best chopping results are achieved by using 2-3 second pulses.

1. After assembling the unit, hold the power pack with your hand, press and hold down on the On/Off Pulse button with your index finger.
2. To avoid the food from being over processed, use the pulse method for chopping and mincing.

Press on the On/Off button for 2 to 3 seconds and then let go. Repeat this procedure until the food has reached the desired consistency.

3. Disconnect the unit from the power source. After the blade has fully stopped, remove the gear box. Carefully remove the chopping blades. Using a rubber spatula, remove the chopped or minced food from the glass beaker.

Crushing Ice

Caution - Blades are sharp. Use extreme caution when handling the blade, always hold it by the plastic hub. Do NOT immerse Power Pack in water or any other liquid.

Ensure that the gear box, and blade assembly is well seated before turning the unit on to chop ice. **Hold appliance with BOTH hands when chopping ice.**

1. Assemble the chopper bowl or the processor bowl as you would for chopping (see pages 3 or 4 for assembly instructions).
2. Place ice cubes to be crushed into bowl.
3. Place the gear box securely onto the processor jar or the chopping bowl.
4. Attach the power pack to the gear box.
5. Hold the power pack firmly with one hand and pulse the On/Off button with your index finger as you hold the processor jar or the chopping bowl firmly with the other when you are crushing ice cubes.

Note: Recommended size of ice cubes is 1 1/4" x 1" x 3/4". Do not crush more than 6 oz. of ice cubes at a time.

Important: This appliance is intended for intermittent use. When crushing ice, use only bursts of 4 seconds each. Run time not to exceed 15 seconds before allowing unit to cool down.

Caution: Hold both the bowl/gear box and power pack when chopping ice. **Don't** hold appliance by the power pack only.

OPERATING INSTRUCTIONS

The **Stick Blender** is an indispensable kitchen tool for blending, chopping, mixing or pureeing when preparing your favorite recipes. For best results, be sure to carefully read all the instructions contained in this book before using this appliance.

275 Watt Power Unit

The 275 Watt Power Unit operates on 120V., 60Hz. electrical power. **Never** allow the power unit to become wet when plugged into an electrical outlet.

Warning: The power unit should never be immersed in water.

Caution: Make sure that the power unit is unplugged from power source and the blades have stopped turning before attaching or removing any accessory.

To operate the Power Unit, press on the On/Off Pulse button located on the top of the unit. The Power Unit will stop operating when you remove your finger from the pulse button. (Fig. 6)

Important: Do NOT operate the appliance when empty.

Using the Food Processor

Caution - Blades are sharp. Use extreme caution when handling the blade, always hold it by the plastic hub.

Note: The Food Processor can be used either with both blades or with the main blade only. **Always** remove blade guards before using.

- Place the processing jar on a stable, flat surface.
- Insert the upper processing blade onto the processing jar main blade (Fig. 1)
- Holding the blades by the plastic shaft, place inside the processing jar making sure that they are positioned over the blade locating pin inside the processing jar. (Fig. 2)
- Add ingredients to be processed to the processing jar.
- Place the gear box in position on the processing jar. (Fig. 4)
- Attach the power pack to the gear box by turning the power pack counter clockwise to lock in place. (Fig. 5)
- To remove the power pack from the gear box, turn the power pack clockwise.
- In order to obtain a better quality of chopping, operate the appliance by using a "pulse" method. (Fig. 6)

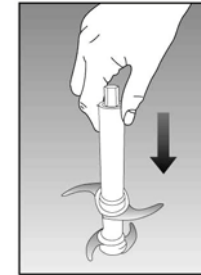


Fig. 1



Fig. 2



Fig. 3



Fig. 4

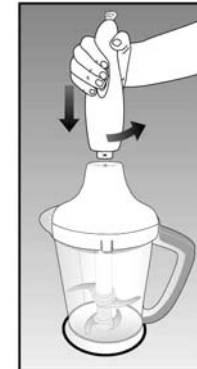


Fig. 5



Fig. 6

- If the ingredients stick to the sides of the jar, dislodge the pieces with a spatula and operate 2 or 3 times using the "pulse" method.
- **Do NOT operate the appliance continuously for more than 15 seconds.**

OPERATING INSTRUCTIONS

CAUTION: Never place food processor jar in microwave or over direct heat.

NOTE: The bowl lid can be used on the processing jar if you wish to store something. (Fig. 7)



Fig. 7

Using the Power Pack with the Chopping Bowl

CAUTION: Make sure that the power unit is unplugged from power source and the blades have stopped turning before attaching or removing any accessory.

To operate the Power Unit, press on the On/Off Pulse button located on the top of the unit. The Power Unit will stop operating when you remove your finger from the pulse button.

Important: Do NOT operate the appliance when empty.

CAUTION - Blades are sharp. Use extreme caution when handling the blade, always hold it by the plastic hub. Always remove blade guards before using.

- Place the chopping bowl on a stable, flat surface.
- Insert the chopping bowl upper chopping blade onto the main chopping blade.
- Place the assembled chopping blades into the chopping bowl onto the blade locating pin. (Fig. 8)
- Add ingredients to be chopped.
- Place the gear box in position on the chopping bowl. (Fig. 9)
- Attach the power pack to the gear box by turning the power pack counter clockwise to lock in place. (Fig. 10)
- To remove the power pack from the gear box, turn the power pack clockwise.

- In order to obtain a better quality of chopping, operate the unit by using a "pulse" method. (Fig. 11) If the ingredients stick to the sides of the chopping bowl, dislodge the pieces with a spatula and operate 2 or 3 times using the "pulse" method.
- Do NOT operate the appliance continuously for more than 15 seconds.
- Remove the power pack, gear box and the chopping blades carefully and cover the chopping bowl with the lid for storage. (Fig. 11)



Fig. 8



Fig. 9

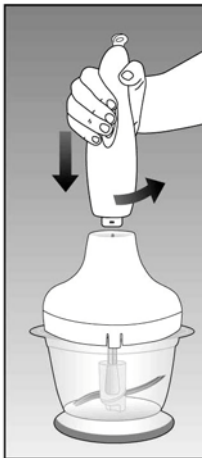


Fig. 10



Fig. 11

CAUTION: Never place chopping bowl in microwave or over direct heat.

OPERATING INSTRUCTIONS

Stick Blender Attachment

CAUTION - Blade is sharp. Detach Stick Blender from power pack and wash with warm soapy water. Do not use any sharp pointed objects to clean residues from under the blade.

Assembling the Stick Blender:

- Make sure that the unit is unplugged from power source before attaching or removing any attachment.
- To attach the stick blender to the power pack, turn the power pack counter clockwise to lock in place. (Fig. 12)

Note: This appliance is designed for Intermittent use. Maximum running time with the stick blender is 1 minute. After this time, allow the unit to cool.

- To avoid splattering, place the stick blender first in the food to be beaten or chopped, then press the pulse button. Always release the button before removing the stick blender from the food, especially when using the stick blender in hot liquids. Always hold the stick blender with your hand while processing. Never leave unit unattended.
- Do Not use the stick blender on the stove. If you want to use it in a saucepan while cooking, you must first remove saucepan from the stove.
- Use the measuring cup/beaker with the stick blender or you can use another container. The measuring cup/ beaker is intended only for processing small quantities of food with the stick blender. (Fig. 13)



Fig. 12



Fig. 13

- To remove the power pack from the stick blender, turn the power pack clockwise.

CAUTION: Never place chopping bowl in microwave or over direct heat.

Using the Stick Blender

Pureeing soups, sauces, fruits and vegetables:

- Fruits and vegetables should be peeled, cored and seeded.
- Food should be cut up into pieces no larger than 3/4-inch.
- Cook the food in liquid until very soft and tender.
- Puree cooked food ONLY after allowing it to cool down.
- Food can also be pureed directly in the pot after being allowed to cool.
- Place the Stick Blender in the center of the food in an upright position with the processor end resting directly on the bottom of the bowl or pot.
- The processor end must always be immersed in the food. **DO NOT lift up and out of food while operating since the hot food will splatter and may cause burns.**
- While holding the power pack and the stick blender in your hand, press and hold down on the switch with your index finger.
- Release once the food has reached the desired consistency.
- Do not operate continuously for more than 1 minute.
- If pieces of unprocessed food remain, or if there are any lumps, continue pureeing the food. Mash the food pieces or lumps by slightly raising and then lowering the stick blender over those pieces.