

Revolabs Single Channel System — Sony PCS-1 Setup Guide

This setup guide will guide you through the steps needed to properly connect a Revolabs Single Channel System to a Sony PCS-1 video codec.

Note: *It is important to carefully follow these instructions in order and completely. Otherwise your Single Channel System and/or the video codec may not function properly. Please read through these instructions completely before proceeding. Contact Revolabs technical support if you have any questions.*

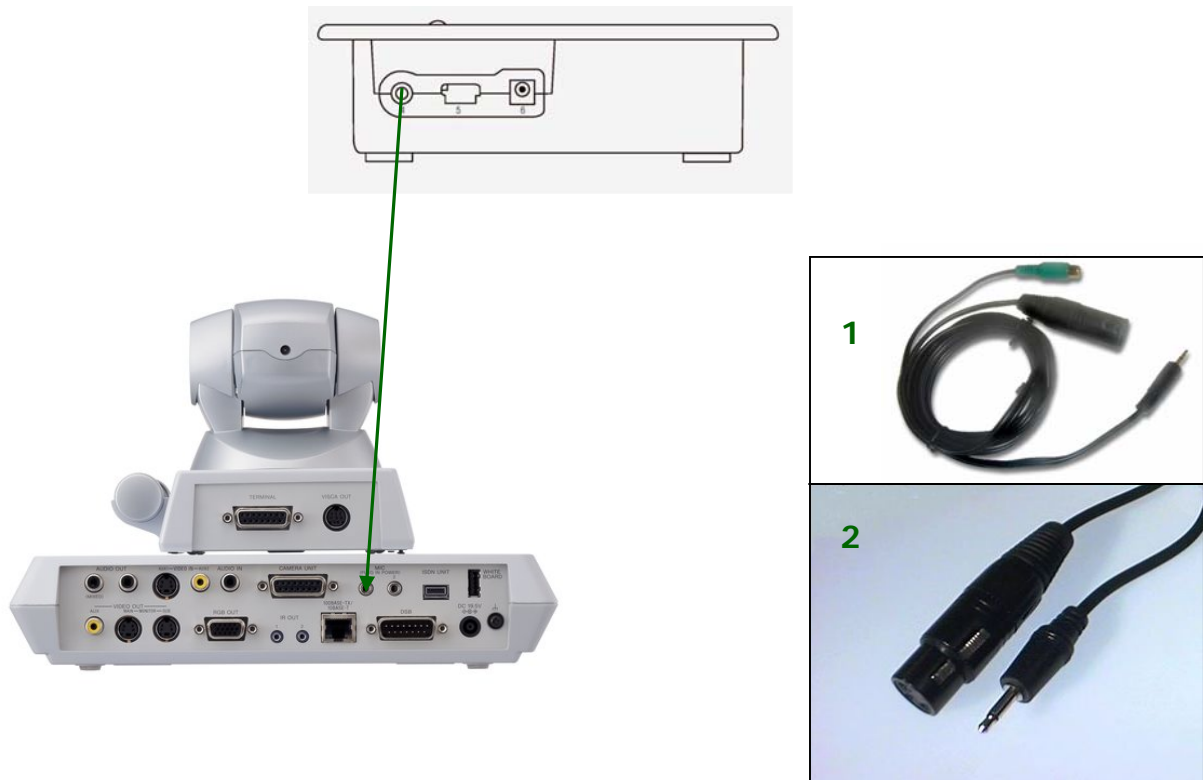
Requirements for connecting systems:

1. Revolabs Single Channel System
2. Sony PCS-1 video codec
3. QTY 1 07-STEMIC-PPP Line-to-Mic Adapter Cable*
4. QTY 1 Female XLR—1/8" mono male cable* (i.e. Calrad 10-144)

* Optional Items

Connecting the Cables

1. Connect a Revolabs 07-STEMIC-PPP Line-to-Mic cable to the 2.5mm analog output on the Single Channel System.
2. Connect a female XLR-to-1/8" cable between the male XLR connector on the 07-STEMIC-PPP cable and the "MIC 1" port on the PCS-1. Disregard the RCA portion of the 07-STEMIC-PPP cable.



Configuring the Sony PCS-1 Video Codec

1. Push the TOOLS button on the remote control
2. Select SETUP
3. Select AUDIO to MIC
4. Select CTE to OFF
5. Select ECHO CANCELLER to ON
6. Save settings