

OLYMPUS®

DIRECTREC

DR-1000

Dictation Kit

INSTRUCTIONS

EN INSTRUCTIONS

Thank you for purchasing an
Olympus DIRECTREC.

Please read these instructions for information
about using the product correctly and safely.
Keep the instructions handy for future reference.

EN

Main Features

This product is equipped with the following features.

- **New and improved microphone system reduces extraneous sounds such as wind or machine noise created while recording and thus enabling a higher quality of sound recording than ever before.**
- **New design and location of buttons enable single-handed control without ever having to visually check the placement of function buttons. Directrec fits easily into your hand providing effortless control coupled with superb dictation experience (☞P.4).**
- **The Directrec has 2 programmable (A,B) buttons (☞P.27,28).**
- **All button functions are easily customized to suit a particular preference or any recording environment (☞P.27-31).**
- **USB Audio Device Directrec, can be used as a USB microphone or USB speaker when connected to a PC. In addition, a powerful built-in speaker provides hi-fidelity acoustic playback.**
- **Directrec can be used as a remote-control for the DSS Player 6 (referred to as DSS Player from now on) not only for direct recording, but also when editing recorded files on a PC.**
- **Directrec can save a recording as a file on a PC in DSS (Digital Speech Standard) format.**
- **Two recording modes, SP (Standard Playback) mode or LP (Long Playback) mode (☞P.21).**
- **Microphone sensitivity can be adjusted to better suit recording conditions and environment (☞P.21).**
- **OLYMPUS IMAGING CORPORATION holds the copyrights for DSS Player Version 6 software and the instructions (this manual).**
- **Microsoft and Windows are registered trademarks of Microsoft Corporation.**
- **Intel and Pentium are registered trademarks of Intel Corporation.**
- **Other product and brand names mentioned herein may be the trademarks or registered trademarks of their respective owners.**

Table of Contents

Introduction

Identification of Parts	4
Minimum Requirement	5

Getting Ready

Installing DSS Player Software	6
Uninstalling DSS Player Software	8
Using Online Help	9

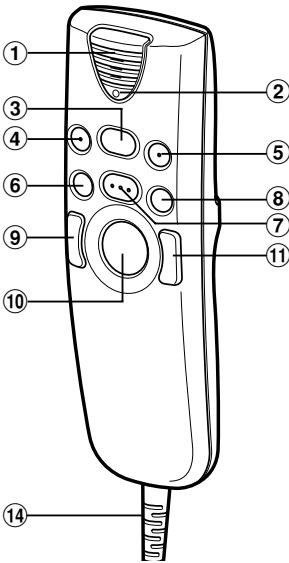
Let's Get Started

Connection to Your PC	10
Running DSS Player	11
Window Names	12
Using the Remote Edit Window	13
Direct Recording	15
Playback (Playing a Dictation File)	18
Save Recording	20
Microphone Sensitivity	21
Recording Modes	21
Index Marks	22
System Sounds	25
Directrec Default User ID to Directrec ...	26
Directrec Button Function Customization ...	27
Troubleshooting	32
Specifications	33

User Support

Technical Assistance And Support	33
--	----

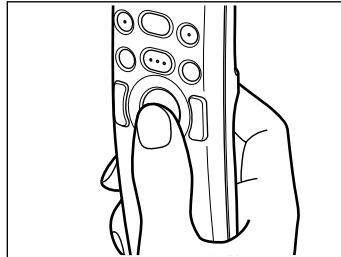
Identification of Parts



- ① Built-in microphone
- ② Record/Play indicator light
- ③ **PLAY** button/**STOP** function
- ④ **NEW** button
- ⑤ **A** (Programmable) button
- ⑥ **REW** (Rewind) button
- ⑦ **REC** (Record)/**STOP** function
- ⑧ **FF** (Fast Forward) button
- ⑨ **Left** mouse button
- ⑩ **Pointing** device
- ⑪ **Right** mouse button
- ⑫ **Built-in** speaker
- ⑬ **B** (Programmable) button
- ⑭ **USB** cable

Tip on the pointing device

Holding Directec gently and using a thumb can control the pointer like a PC mouse.



How to use the pointing device

Hold Directec gently and use your thumb to move the pointer to your desired direction. To click, use the pointing device right or left button as you would with a PC mouse. Please do not press or move the pointing device Forcefully.

Minimum Requirement

Basic Minimum Requirement of DSS Player

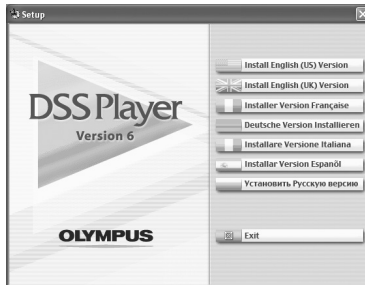
PC:	IBM PC/AT compatible PC
Operating System:	Microsoft Windows Me/ 2000 Professional/ XP Professional, Home Edition
CPU:	Intel Pentium II class 333 MHz processor or faster (Processor 500 MHz or faster is recommended)
RAM:	128 MB or more (256 MB or more is recommended)
Hard drive space:	50 MB or more
Drive:	2x or faster CD-ROM, CD-R, CD-RW, DVD-ROM drive
Sound card:	Creative Labs Sound Blaster 16 or 100% compatible sound card
Browser:	Microsoft Internet Explorer 4.01 SP2 or later
Display:	800 x 600 pixels or more, 256 colors or more
USB port:	One or more free ports

Installing DSS Player Software

Before you connect your Directrec to your PC, you must first install the DSS Player software.

Make sure to exit all running applications, eject the floppy disk if you are using one, and logon as administrator if you are running Windows 2000/XP (Professional only) on the network.

- 1 Insert Olympus DSS Player CD into the CD-ROM drive.**
The installation program will start automatically. Once the program starts, jump to step 4. If it does not, follow the procedures in steps 2 and 3.
- 2 Click the [start] button and select [Run].**
- 3 Enter “D:\setup.exe” in the [Open] field and click [OK] .**
This is assuming the CD-ROM drive is D.
- 4 The installation Language Selection dialog box opens.**
Click the desired language to select it.



Installing DSS Player

- 5 Register user information.**
Enter your name, company name and serial number. For the serial number, see the label attached to the CD-ROM package provided with DSS Player. When entered, click [Next]. When the confirmation dialog appears, click [Yes].
- 6 Confirm your acceptance of the terms of the Licensing Agreement.**
You must accept the terms of the Licensing Agreement to install DSS Player. If you accept them, click [Yes].

7 Select where to install DSS Player.

This lets you specify the folder in which to install DSS Player. Click [Browse] to find the desired installation folder. To accept the default folder, click [Next].

Note

If the installation folder does not exist, a confirmation dialog box opens to get your permission to create a folder for this purpose. Click [Yes].

8 Select a program menu folder.

You may change the program menu folder to another one, such as [Start Up]. To accept the default folder, click [Next].

9 Authorizing the start of file copying.

Confirm all “Current Settings”. To accept them, click [Next].

Note

To change the program menu folder or installation folder, click [Back].

10 Copy files.

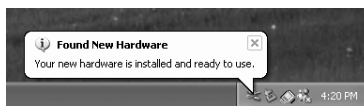
Wait until DSS Player is installed on your PC, then click [Finish]. The screen returns to the opening screen automatically.

Installing the Device Driver

11 Connect the Directrec to your PC, referring to “Connection to Your PC” (P.10).

When you connect the Directrec to your PC for the first time after installing DSS Player, the Directrec’s driver will be installed automatically. If the driver is installed properly, DSS Player will start automatically.

(For details about operation for DSS Player see pages from P.11)



Uninstalling DSS Player Software

To uninstall any of the software components of the DSS player software installed on your PC, follow the steps below.

- 1 Exit DSS Player.**
- 2 Select [Control Panel] from [start] menu.**
- 3 Click [Add/Remove programs] in the control panel window.**
- 4 A list of applications that have been installed is displayed.**
Select the software you would like to uninstall/remove.
- 5 Click [Change/Remove].**
- 6 Confirmation of Deleting the program.**
Click the [OK] button to start uninstalling.
An additional message may appear, if so, read it carefully and follow the instructions given.
- 7 When the [Maintenance Complete] screen is displayed, click [Finish] to complete uninstalling.**

Note

- The voice files you made are stored in the [MESSAGE] folder. If you don't need them, delete them. You can confirm the location of the [MESSAGE] folder by clicking [Options] in the [Tools] menu before uninstalling.

Using Online Help

For information on the DSS Player usage and features, refer to the Online Help.

To open Online Help, you have the following options.

- Click the [start] button, select [All Programs], then [Olympus DSS Player], then click [Help].
- While DSS Player is running, choose [Contents] from the [Help] menu.
- While DSS Player is running, press [F1] on the keyboard.

Search by Contents

1 Once the Online Help screen appears, click the **Contents** tab.

2 Double-click the  icon of the desired topic heading.

The title of the topic is displayed.

3 Double-click the  icon of the desired topic.

An explanation of the topic is displayed.



Search by Keyword

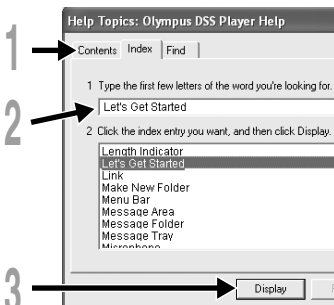
1 Once the Online Help screen appears, click the **Index** tab.

2 Enter text.

Matching keywords are located automatically.

3 Choose a topic, then click **[Display]**.

An explanation of the topic is displayed.



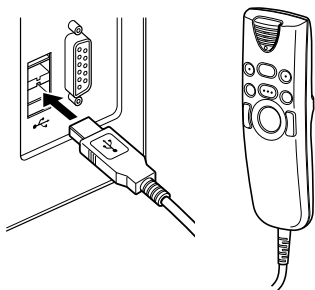
Note

- For more information on menus and operations, refer to Online Help.


Connection to Your PC

Be sure to install the DSS Player software before connecting the Directrec to the PC. However, if you do connect the Directrec before or during the software installation, the “Add New Hardware Wizard” will appear. In this case, cancel the wizard by pressing the [Cancel] button in the wizard screen and then install or continue the installation of DSS Player software.

Connecting to your PC Using the USB Cable



- 1 **Connect the Directrec USB cable directly into the USB port or USB hub of your PC.**

When the DSS Player is activated, the  icon will appear in Device Tree View (P.12) of the DSS Player.

Disconnecting from Your PC

- 1 **Disconnect the Directrec USB cable from your PC USB port or USB hub.**


Notes

- Some PCs and USB hubs may not supply sufficient power and the Directrec fails to connect. Refer to your PC User's Manual regarding the USB port or USB hub on your PC.
- When using a USB hub to connect the Directrec, always use a self-powered (AC adapter) USB hub.
- Never disconnect the USB code while the record/play indicator light is flashing. If you do, the data will be destroyed.

Running DSS Player

By default, connecting the Directrec to your PC will start the application automatically.

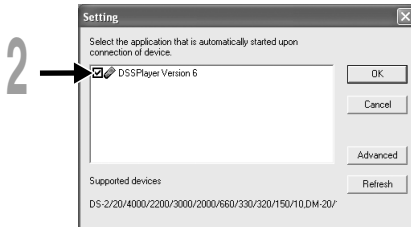
Disabling automatic start

1 Right click Device Detector icon  in the System Tray in the lower right hand corner of the screen, and select [Setting].

The application which enables setting will be displayed by dialog.

2 Click the of the [DSS Player Version 6].

The check mark on [DSS Player Version 6] disappears. For automatic start, select and click DSS Player to reinstate again.

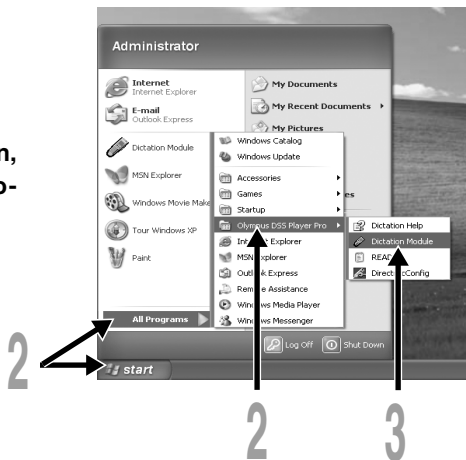


Manual start

1 Start Windows.

2 Click the [start] button, then select [All Programs].

3 Click [Olympus DSS Player].

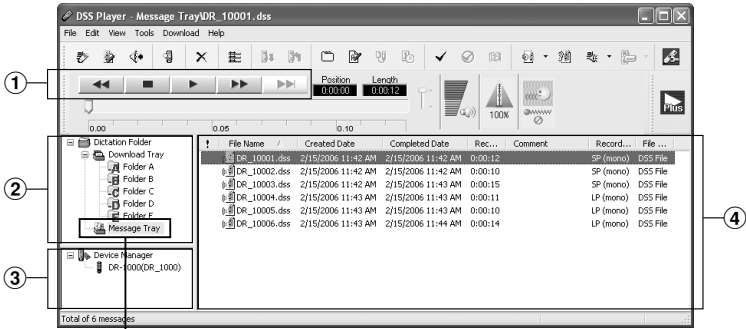


Note

- If you connect the Directrec before installing DSS Player, the "Add New Hardware Wizard" dialog box will open. If this happens, click [Cancel] to exit the wizard, then install the DSS Player software.

Window Names

Main Window(Windows XP)



*Main screen is displayed when DSS Player is started.



Message Tray

① Playback Control Bar

Provides the control buttons to play and stop dictation files.

② Dictation Tree View

Displays the directory structure of the DSS, WAVE -format files stored on your PC's hard disk.

Recordings made using Directrec will be saved as a file in the Message Tray () in the Dictation Folder ().

③ Device Tree View

Displays the directory structure of the Directrec.


④ Dictation List View

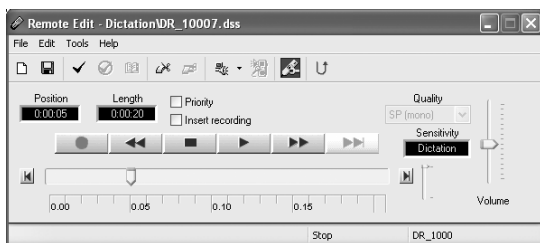
Displays the dictation files in the folder selected in ② and ③.

Using the Remote Edit Window

For enjoyable recording experience, use Directrec with the DSS Player software to record to your PC. The DSS Player can be configured to provide you with complete remote control over your recording session from the Directrec without the use of the PC mouse.

Starting the [Remote Edit] window for the DSS Player main window

- 1 Ensure Directrec is properly connected to your PC and then start the DSS Player.**
DSS Player main window appears.
- 2 From the DSS Player main window, click the [File] menu, then select [New File...], or click the  icon.**
[Remote Edit] window appears.
- 3 Directrec button functions are completely supported when the [Remote Edit] window is open.**



Notes

- Ensure that the [Remote Edit] window is open when you use Directrec, or the remote control will not function.
- The [Remote Edit] window can also be displayed without opening the main menu when starting the DSS Player (see P.14).

Starting the [Remote Edit] window without opening the DSS Player main window

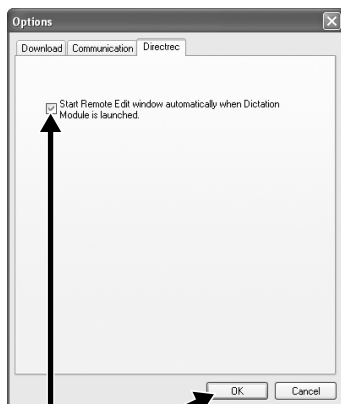
With a push of a button on the Directrec, you can set your PC to open the [Remote Edit] window directly without entering the DSS Player main window.

1 From the DSS Player main window, click the [Tools] menu, select [Options...], then click the [Directrec] tab.

2 Check [Start Remote Edit window automatically when Dictation Module is launched] and then click the [OK] button.

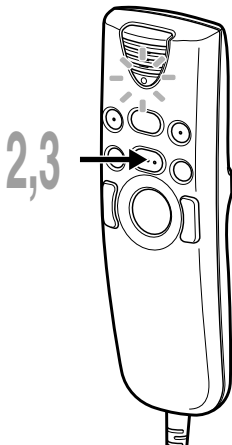
The pre-settings are now complete.

When pre-settings are checked, the computer recognizes the Directrec device connection as the DSS Player starting, and opens the [Remote Edit] window without opening the main application window (P.12).




Direct Recording

New Recording




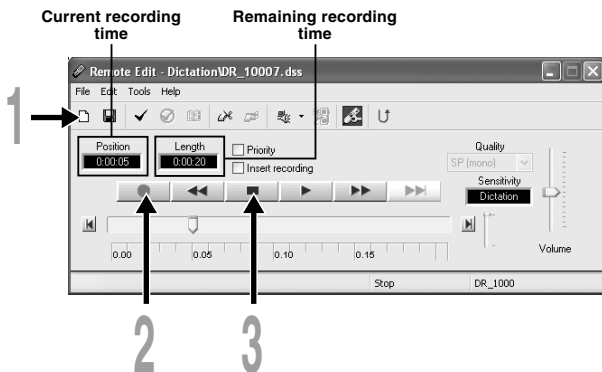
1 From the DSS Player main window, click the [File] menu, then select [New File...], or click the  icon. [Remote Edit] window appears.

2 Press the **REC** button on the Directrec or press the  (Record) button in the [Remote Edit] window to start recording.

The red record/play indicator light on Directrec will become lit. Point the microphone at the sound source.

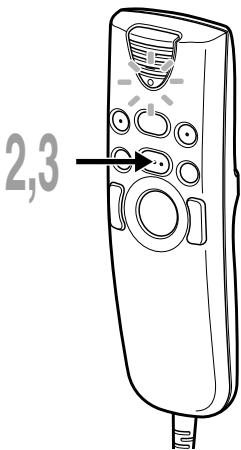
3 Press the **REC** button on the Directrec or press the  (Stop) button in the [Remote Edit] window to stop recording.



If you want to append additional recordings to the same file, Press the REC button on the Directrec or press the  button again.

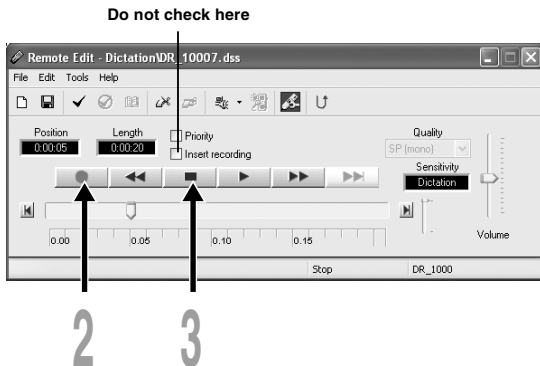


Overwrite Recording

You can overwrite a previous recording from any point within the file. Note that the overwritten recordings will be permanently erased.



- 1 Make sure you are at the starting point of the recording to be overwritten.
- 2 Press the **REC** button on the Directrec or press the  (Record) button in the [Remote Edit] window.
The record/play indicator light on the Directrec will light up and Overwrite Recording will start.
- 3 Press the **REC** button on the Directrec or press the  (Stop) button in the [Remote Edit] window to stop overwriting.

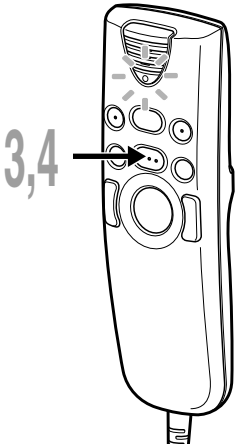




Notes

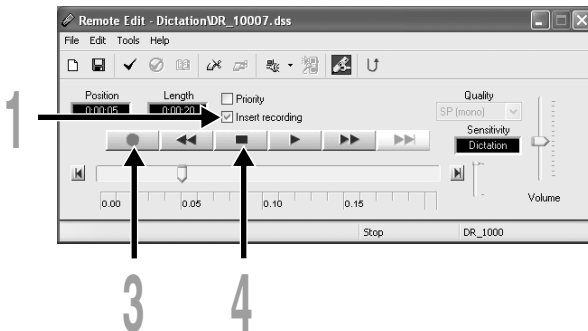
- Ensure that the "Insert recording" box (see P.17) in the [Remote Edit] window is not checked or the overwrite recording will not proceed.
- You cannot select a different recording mode (SP, LP) than that of the original file before overwriting a recording.

Insert Recording

Additional recording can be inserted into a previously recorded file.



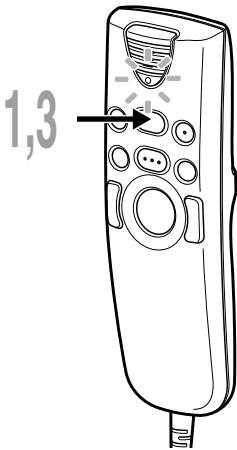
- 1 Check () "Insert recording" box in the [Remote Edit] window.
- 2 Make sure you are at the right position in the file where recording insert should take place.
- 3 While playing the file, press the **REC** button on the Directrec or press the  (Record) button in the [Remote Edit] window to start inserting an additional recording.
The red record/play indicator light on Directrec will become lit.
- 4 Press the **REC** button on the Directrec or press the  (Stop) button in the [Remote Edit] window to stop inserting the additional recording.




Notes

- Ensure that the "Insert recording" box in the [Remote Edit] window is checked or the recording will not be inserted.
- You cannot select a different recording mode (SP, LP) than that of the original file before overwriting a recording.

Playback (Playing a Dictation File)




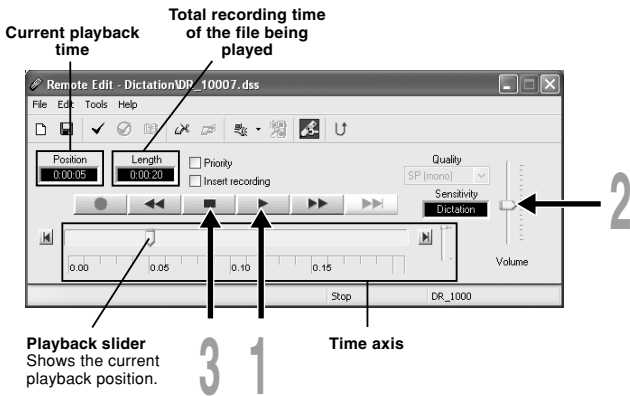
- 1 Press the **PLAY** button on the Directrec or press the  (Play) button in the [Remote Edit] window to start playback.

The green record/play indicator light on Directrec will become lit.

- 2 Adjust the volume slider in the [Remote Edit] window to the required level.

The recording will be played through the Directrec speaker.

- 3 Press the **PLAY** button on the Directrec or press the  (Stop) button in the [Remote Edit] window at any point you want to stop the playback.










Playback functions

Various functions are available with Directrec and the [Remote Edit] window to playback a recorded file.

Directrec playback functions

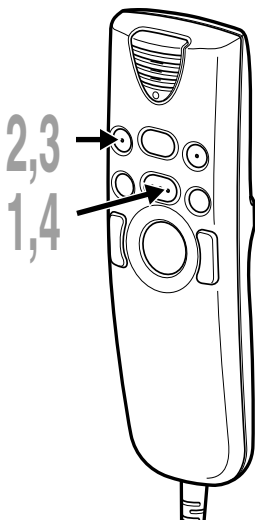
Playback functions	Operation	How to Cancel
Fast Forward (FF)	Press the FF button once while stopped.	Press the PLAY button. ▶ The Directrec starts the operation of the set position.
Rewind (REW)	Press the REW button once while stopped.	
Cue (CUE)	Hold the FF button while stopped or playing a file.	Release the FF button.
Review (REV)	Hold the REW button while stopped or playing a file.	Release the REW button.

Functions using the [Remote Edit] window

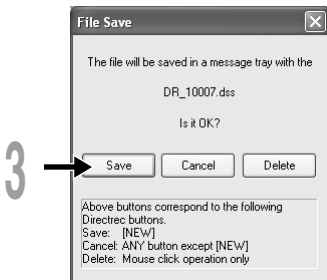
Playback functions	Operation	How to Cancel
Fast Forward (FF)	Press the  button once while stopped.	Press the  button. ▶ Recorded file will play again.
Rewind (REW)	Press the  button once while stopped.	
Cue (CUE)	Hold the  button while stopped or playing a file.	Release the  button.
Review (REV)	Hold the  button while stopped or playing a file.	Release the  button.

- Please refer to our Online Help for further information about Directrec functions and controls (P.9).

Save Recording



- 1 To save the current recording, press the **REC** button on the Directrec or press the  (Stop) button in the [Remote Edit] to stop recording.
- 2 Either press the **NEW** button on Directrec or click the  icon on the toolbar in the [Remote Edit] window. [File Save] window will appear to save the data.
- 3 To save the file, either press the **NEW** button on the Directrec or click the [Save] button on the [Remote Edit] window.
The recorded data will be saved.
- 4 The Directrec is now available for recording on a new file, press the **REC** button on the Directrec or press the  (Record) button in the [Remote Edit] window to start recording.



File Name Format

File names are assigned in the following manner.

DR_10001.dss

Extension

File number... A serial number automatically assigned by the DSS Player.

The ID that has been set on the Directrec. The default name on the Directrec is "DR_1000". The user ID can be modified with DSS Player (see P.26).

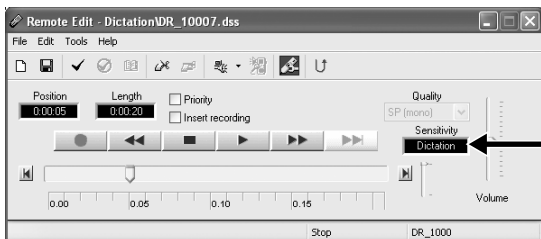
Microphone Sensitivity

Microphone sensitivity is adjustable to meet recording needs.

- 1 **Select from the “Sensitivity” box either “Dictation” or “Conference” in the [Remote Edit] window.**

Conference: The high-sensitivity mode suitable for recording the ambient sounds.

Dictation: The low-sensitivity mode suitable for recording dictation.



Note

- If you want to record clear or noise-free dictation, select Dictation mode and place the microphone 5 to 10 cm (2 to 4 inches) from the source.

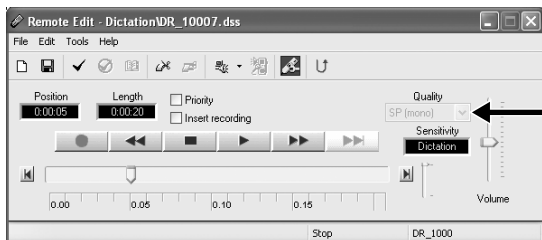
Recording Modes

Two recording modes are available with the Directrec. SP (standard recording) and LP (long-term recording).

- 1 **Select from the “Quality” box either “SP (mono)” or “LP (mono)” in the [Remote Edit] window.**

SP: Default recording mode.

LP: Can record in a smaller file size with the same recording time as the SP mode.



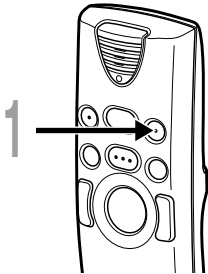
Note

- Choose SP mode for recording meetings or lectures with crisp clarity.

Index Marks


Index marks can be placed in a file during recording or playback to provide a quick and easy way of identifying important sections in the file.

Setting an Index Mark

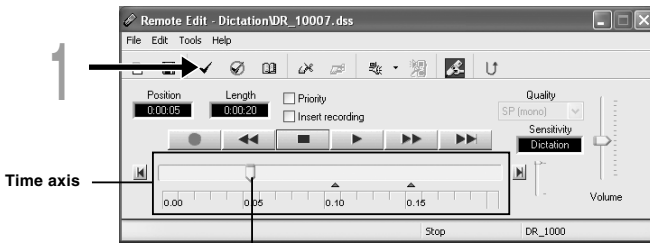


1 Either press the **A** button on **Directrec**, or click the icon on the toolbar in the **[Remote Edit]** window while recording or playing.

Index Mark will now be set.

A  icon will appear on the time axis bar in the **[Remote Edit]** window.

The index mark can also be set by selecting **[New Index Mark]** in the **[Tools]** menu.




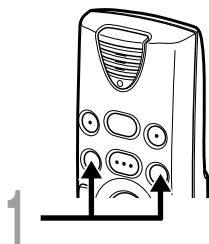
Playback slider
Displays the current position of playback or recording.



Notes

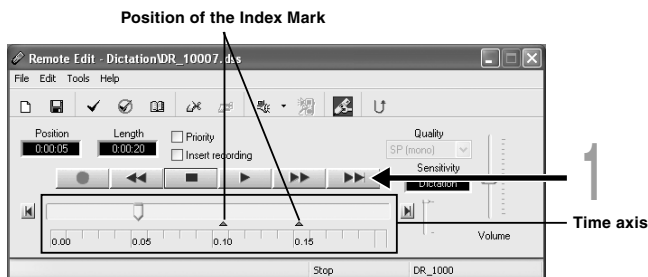
- Up to 16 index marks can be set in a file.
- Index marks cannot be set or cleared in a locked file. Please see the Online Help for further details (P.9).

Locating an Index Mark


The  icon on the time axis bar in the [Remote Edit] window indicates the position of the Index Mark. To jump to a marked position follow this procedure.

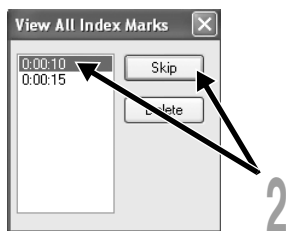


- 1 Either press **FF** or **REW** button on Directrec twice, or click the  button on the [Remote Edit] window. The Playback slider will automatically jump to the Index Mark () position.




Using the [View All Index Marks] window to jump to the Index Mark

- 1 Click the  icon on the toolbar in the [Remote Edit] window. Or, select [View All Index Marks...] in the [Tools] menu. The [View All Index Marks] window will appear.
- 2 Select the marked position you want to jump to and click [Skip]. Directrec will jump to the selected Index Mark position.



Clearing an Index Mark


- 1** Locate the index mark you want to clear.
- 2** Click the  icon on the toolbar in the [Remote Edit] window.
Or, select the [Delete Index Mark] in the [Tools] menu.
The index mark is erased.

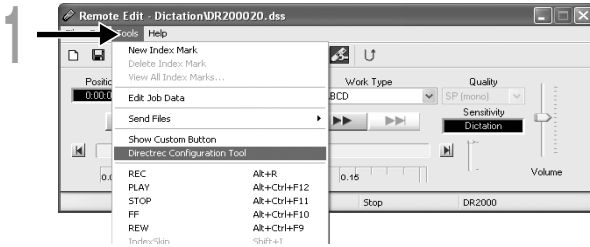
Note

- Index marks cannot be set or cleared in a locked file. Please see the Online Help for further details (P.9).

System Sounds

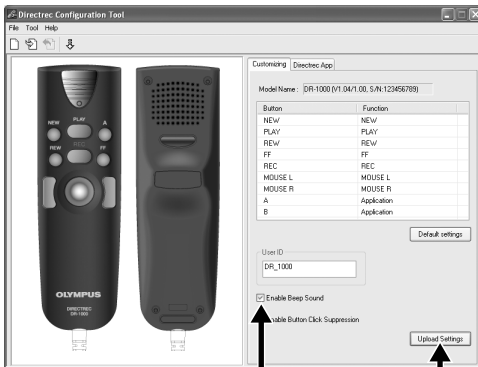
The Directrec beeps to alert you to button operations. System sounds may be turned off.

- 1 Click the  icon on the toolbar in the [Remote Edit] window. Or, select [Directrec Configuration Tool] in the [Tools] menu. The [Directrec Configuration Tool] dialog box will appear.




- 2 Select the [Customizing] tab and check the [Enable Beep Sound] box.
 - With check: System sound is On.
 - Without check: System sound is Off.

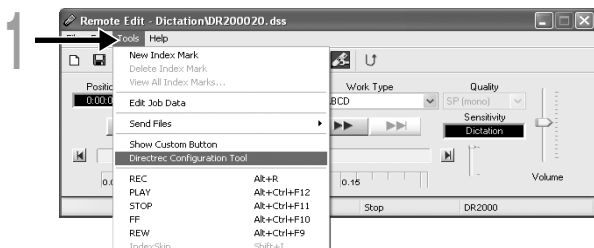
- 3 Click [Upload Settings].
The settings are now completed.



Directrec Default User ID to Directrec

The Directrec User ID plays an essential part in the file naming process of new recordings. The default User ID is “DR1000”. In order to change the default user ID, follow the procedure below.

- 1 Click the  icon on the toolbar in the [Remote Edit] window. Or, select the [Directrec Configuration Tool] in the [Tools] menu. The [Directrec Configuration Tool] dialog box will appear.



- 2 Input your user ID into the [User ID] box and click [Upload Settings]. The input User ID will be transferred to Directrec. The ID can be any combination of “A” to “Z”, Numeric and/or “_”, and up to a maximum of 16 letters long.




Note

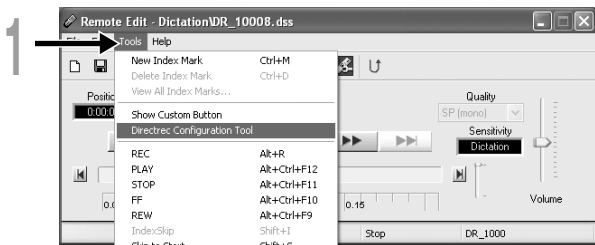
- Never disconnect the USB access if the indicator light is flashing red. If you do so, the data may be destroyed.

Directrec Button Function Customization

Using [Directrec Configuration Tool], Directrec button functions can be easily customized to suit individual user needs.

Customizing Directrec Buttons

- 1 Select [Directrec Configuration Tool] in the [Tools] menu in the [Remote Edit] window. Or, click the  icon on the toolbar. The [Directrec Configuration Tool] dialog box will appear.



- 2 Select the function to be assigned to each button and click [Upload Settings]. The "Successfully upload setting" alert will appear and complete customization. If the "Failed to upload setting" alert appears, try the setting procedure once again.



List of Customizable buttons and Available Functions

List of customizable buttons	Default settings	Functions available for settings
REW	REW	REW, PLAY, FF, NEW,
PLAY	PLAY	INDEX* ¹ , PRIORITY* ² ,
FF	FF	INSERT/OVERWRITE* ³ ,
NEW	NEW	DISABLE* ⁴ , Application...* ⁵
REC	REC	
A	Application (INDEX/DSS Player)	
B	Application (EXIT)	

*1: [INDEX] button function...To insert an index mark using the [Remote Edit] window.

*2: [PRIORITY] button function...To switch the "Priority" settings in the [Remote Edit] window.

*3: [INSERT/OVERWRITE] button function...To switch the Insert and Overwrite recording modes in the [Remote Edit] window.

*4: [DISABLE] button function...No function will be assigned.

*5: [Application...] button function...To programme to start a shortcut key for the DSS Player and a selected application by using the [Directrec APP] tab.

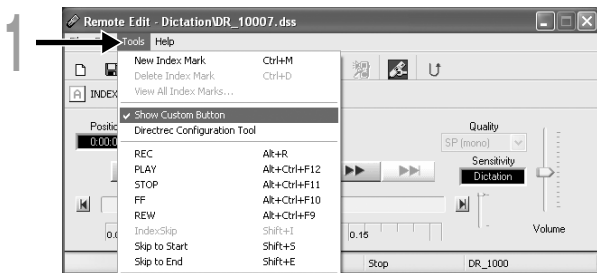
Example: (EXIT) indicates that the shortcut key for the exit command in the [Remote Edit] window is assigned. Refer to the Online Help for registration.

Displaying Programmable Buttons

The Directrec Programmable (A,B) buttons can be displayed in the [Remote Edit] window. They are useful as the assigned functions are also shown.

1 Select and check the [Show Custom Button] box in the [Tools] menu of the [Remote Edit] window.

The Programmable (A,B) buttons along with their programmed function will be displayed in the toolbar.




Note

- The Programmable buttons will not be displayed if the connected device does not include the same function buttons.

Programming Shortcut Keys (Registration)

You can customize the functions of other applications to the Directrec buttons. This enables you to use the other application software easily while dictating with Directrec.

The selected application shortcut keys can be programmed to Directrec Programmable (A,B) buttons by using [Directrec Configuration Tool]. By doing so, the Directrec buttons can be used to start the applications and command the functions.

The  icon will be displayed in the task tray as a regular application in [Directrec Configuration Tool].

Programming [Remote Edit] Function (Default)

The shortcut keys in the DSS Player [Remote Edit] window are programmed as default.

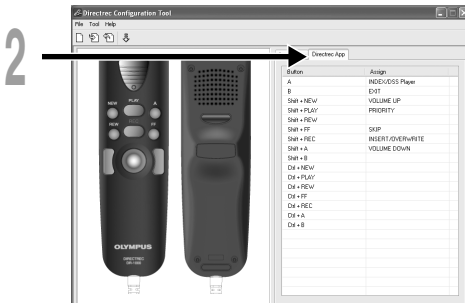
- 1** Click the  icon on the toolbar in the [Remote Edit] window. Or, select [Directrec Configuration Tool] in the [Tools] menu.

The [Directrec Configuration Tool] dialog box will appear.



- 2** Select the [Directrec App] tab in the [Directrec Configuration Tool] dialog box.

The shortcut keys for the [Remote Edit] window programmed to each button on the Directrec as well as each start-up application are displayed.



The default programmed shortcut keys are shown below.

Button	Assigned command
B	Application (Exit the Remote Edit window)
Shift+ FF	Jump to the index mark
Shift+ NEW	To turn up the volume
Shift+ A	To turn down the volume
Shift+ PLAY	PRIORITY
Shift+ REC	Switching Insert/Overwrite Recording

Only the programmable (A,B) buttons can be programmed. Programming of the NEW, REW or FF button is not possible. However, the combination with Shift key or Ctrl key of the PC will enable programming.

Programming shortcut keys to your desired application


Directrec programmable (A,B) buttons as well as the [Remote Edit] window can be used to control and navigate through applications when they are individually programmed as application shortcuts.

The shortcuts to applications can be saved individually as templates.

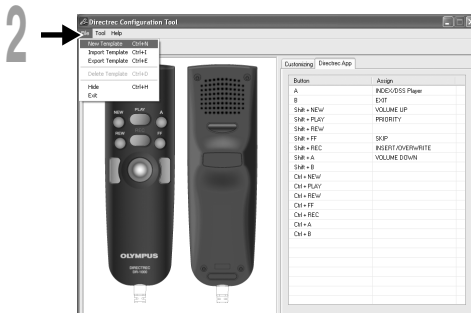
As the template can be switched automatically when the application becomes active, the various applications can be operated by remote control when required.

1 Click the  icon on the toolbar in the [Remote Edit] window. Or, select [Directrec Configuration Tool] in the [Tools] menu.

The [Directrec Configuration Tool] dialog box will appear.

2 Click the  icon on the toolbar in [Directrec Configuration Tool]. Or, select [New Template] in the [File] menu.

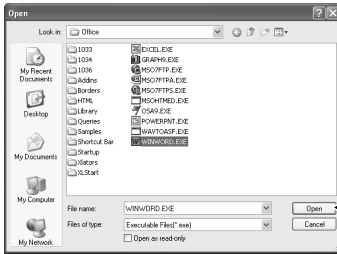
The [Open] dialog box will appear.



3 Browse and Select the application executable and click [Open].

The application shortcut is now set.

For example, if you select Microsoft Word “winword.exe” executable file, “winword” will be added to the [Directrec Configuration Tool] dialog box.



4 Select the tab added to the [Directrec Configuration Tool] dialog box and program the shortcut key to Directrec Programmable (A,B) buttons.

The registered contents will be automatically saved as a template. Programming to the buttons other than Programmable (A,B) buttons is possible with the combination with Shift key or Ctrl key of the PC.

Refer to the Online Help (P.9) for further information on programming shortcut keys.

(A):The [Button] column shows Directrec buttons. Shift+XXX and Ctrl+XXX indicates the combination of Shift key or Ctrl key on the keyboard and Directrec buttons.

(B):The [Assign] column shows the currently programmed shortcut keys or the start-up application status.



(A)

(B)

Troubleshooting

For the latest information not included in the user manual, please refer to the Online Help (P.9).

Symptom	Probable cause	Action
Unable to use Directrec controls	DSS Player (included in the package) is not installed. The [Remote Edit] window in the DSS Player (included in the package) is not open.	Install the DSS Player (P.6). Open the [Remote Edit] window first and then use Directrec.
No playback tone heard	The sound volume in the [Remote Edit] window is set to 0. The sound volume of your computer is set to 0.	Adjust the volume level.
Noise heard during playback	The Directrec was shaken during recording. The Directrec was placed near a cell phone or fluorescent lamp while recording or during playback.	Move the Directrec.
Recording level too low	The microphone sensitivity is too low.	Set the microphone sensitivity to Conference mode and try again (P.21).
Unable to set index marks	The maximum number of index marks (16) has been reached.	Erase unnecessary index marks (P.24).
Cannot connect to PC	Sometimes a connection cannot be made with some PCs running Windows XP.	You need to change the PC's USB settings. See DSS Player Online Help for details (P.9).
Unable to use Directrec USB microphone/speaker.	USB Audio Device is not selected in the device settings of your PC.	Go to the Windows [start] menu, → [Control Panel] and then select [Sounds and Multimedia]. Open the [Audio] tab and select USB Audio Device as the setting for "Sound Playback" and "Sound Recording".

Specifications

Recording format: DSS (Digital Speech Standard)

Input level: -70 dBv

Overall frequency response: 100 to 15,000 Hz

Maximum working output (5 V DC): 300 mW or more (8 Ω speaker)

External dimensions: 157 x 49 x 27 mm (without protrusions)

Weight: 200 g

Cable length: 2.5 m

Plug shape: USB connector A type

Technical Assistance And Support

The following is contact information for technical support for Olympus Directrec and software only.

◆ Technical Hotline Number in the U.S. and Canada
1-888-553-4448

◆ User Support E-mail address in the U.S. and Canada
distec@olympus.com

◆ Technical Hotline Number in Europe

Toll free number

00800 67 10 83 00

available for Austria, Belgium, Denmark, Finland, France, Germany, Italy, Luxemburg, Netherlands, Norway, Portugal, Spain, Sweden, Switzerland, United Kingdom

Charged numbers for the Rest of Europe

+49 180 567 1083

+49 40 23773 899

◆ User Support E-mail address in Europe
dss.support@olympus-europa.com

For customers in North and South America

Declaration of Conformity

Model Number: DR-1000
Trade Name: DIRECTREC
Responsible Party: OLYMPUS IMAGING AMERICA INC.
Address: 2 Corporate Center Drive, PO BOX 9058 Melville, NY 11747-9058, U.S.A.
Telephone Number: 800-622-6372

This device Complies with Part 15 of the FCC Rules. Operation is subject to the following two conditions: (1) This device may not cause harmful interference, and (2) this device must accept any interference received, including interference that may cause undesired operation.

FC Tested To Comply
With FCC Standards
FOR HOME OR OFFICE USE

Canadian RFI

This digital apparatus does not exceed the Class B limits for radio noise emissions from digital apparatus as set out in the Radio Interference Regulations of the Canadian Department of Communications.

Cet appareil numérique ne dépasse pas les limites de Catégorie B pour les émissions de bruit radio émanant d'appareils numériques, tel que prévu dans les Règlements sur l'Interférence Radio du Département Canadien des Communications.

For customers in Europe



"CE" mark indicates that this product complies with the European requirements for safety, health, environment and customer protection.



Das „CE“ Zeichen bestätigt die Übereinstimmung mit den Europäischen Bestimmungen für Betriebssicherheit und Umweltschutz.



This symbol [crossed-out wheeled bin WEEE Annex IV] indicates separate collection of waste electrical and electronic equipment in the EU countries. Please do not throw the equipment into the domestic refuse. Please use the return and collection systems available in your country for the disposal of this product.



Dieses Symbol [durchgestrichene Mülltonne nach WEEE Anhang IV] weist auf die getrennte Rücknahme elektrischer und elektronischer Geräte in EU-Ländern hin.

Bitte werfen Sie das Gerät nicht in den Hausmüll. Informieren Sie sich über das in Ihrem Land gültige Rücknahmesystem und nutzen dieses zur Entsorgung.

Anwendbare Produkte : DR-1000

Applicable Product : DR-1000



L'indication "CE" signifie que ce produit est conforme aux exigences concernant la sécurité, la santé, l'environnement et la protection du consommateur.



Знак "CE" обозначает, что этот продукт соответствует европейским требованиям по безопасности, охране здоровья, экологической безопасности и безопасности пользователя.



Le symbole [poubelle sur roue barrée d'une croix WEEE annexe IV] indique une collecte séparée des déchets d'équipements électriques et électroniques dans les pays de l'UE.

Veillez ne pas jeter l'équipement dans les ordures domestiques. A utiliser pour la mise en rebut de ces types d'équipements conformément aux systèmes de traitement et de collecte disponibles dans votre pays.

Produit applicable : DR-1000



Этот символ [перечеркнутая мусорная урна WEEE на колесах, приложение IV] обозначает раздельный сбор электрических и электронных отходов в России.

Пожалуйста, не выбрасывайте изделия в бытовой мусоропровод. Используйте системы возврата и сбора (если таковые имеются) для утилизации отходов вышеуказанных типов.

Применимое изделие: DR-1000



La marca "CE" indica que este producto cumple con los requisitos europeos en materia de seguridad, salud, medio ambiente y protección al consumidor.



Il marchio "CE" indica che questo prodotto è conforme alle norme della comunità europea per quanto riguarda la sicurezza, la salute, l'ambiente e la protezione del consumatore.



Este símbolo [un contenedor de basura tachado con una X en el Anexo IV de WEEE] indica que la recogida de basura de equipos eléctricos y electrónicos deberá tratarse por separado en los países de la Unión Europea. No tire este equipo a la basura doméstica.

Para el desecho de este tipo de equipos utilice los sistemas de devolución al vendedor y de recogida que se encuentren disponibles.

Producto aplicable: DR-1000



Questo simbolo [contenitore di spazzatura barrato come illustrato nell'allegato IV della direttiva WEEE] indica una raccolta separata dei rifiuti di apparecchiature elettriche ed elettroniche nei paesi dell'Unione Europea.

Si prega di non gettare questo dispositivo tra i rifiuti domestici.

Si prega di utilizzare i sistemi di raccolta e di recupero disponibili per lo smaltimento di questo tipo di dispositivi.

Prodotto applicabile : DR-1000

OLYMPUS®

OLYMPUS IMAGING CORP.

Shinjuku Monolith, 3-1 Nishi-Shinjuku 2-chome, Shinjuku-ku, Tokyo 163-0914, Japan. Tel. 03-3340-2111

OLYMPUS IMAGING AMERICA INC.

Two Corporate Center Drive, PO BOX 9058 Melville, NY 11747-9058, U.S.A. Tel. 1-800-622-6372

OLYMPUS IMAGING EUROPA GMBH

(Premises/Goods delivery) Wendenstrasse 14-18, 20097 Hamburg, Germany. Tel. 040-237730

(Letters) Postfach 10 49 08. 20034 Hamburg. Germany.

OLYMPUS UK LTD.

2-8 Honduras Street, London EC1Y 0TX, United Kingdom, Tel. 020-7253-2772

<http://www.olympus.com/>