

Portable K@raoke Plug & Sing

Save your favorite songs here



K@raoke functions are
within this swivel ring



Insert the Memory Card



CONTENTS

CHAPTER 1: GENERAL INSTRUCTION	
CONTENTS.....	1
IMPORTANT SAFETY INSTRUCTIONS.....	2
PACKAGE CONTENTS.....	3
CHAPTER 2: BASIC OPERATION	
CONNECT TO A TV	4
CONNECT TO A TV AND A AUDIO AMPLIFIER.....	5
TERMINAL CONNECTION.....	6
HOW TO PLUG IN AVP CABLE.....	6
HOW TO REMOVE AVP CABLE.....	7
POWER ON/ OFF	7
BATTERY OPERATION.....	8
CHAPTER 3: BUTTON DEFINITION	
SWIVEL RING.....	9
POWER INDICATOR.....	9
ON/ OFF SWITCH.....	9
ENTER BUTTON.....	9
MENU BUTTON.....	9
GUIDE BUTTON.....	9
CHAPTER 4: MENU OPERATION	
MAIN MENU OPERATION.....	10
SONG LIST OPERATION.....	11
ENTER SLEEP MODE.....	12
PLAY LIST OPERATION.....	13
SETTING OPERATION	14
SYSTEM OPERATION.....	15
CHAPTER 5: OTHERS	
TROUBLE SHOOTING.....	16

IMPORTANT SAFETY INSTRUCTIONS

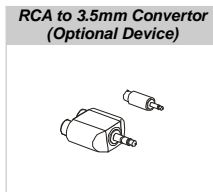
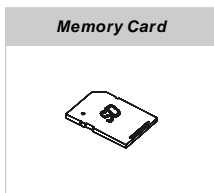
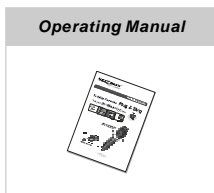
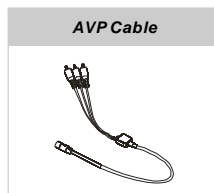
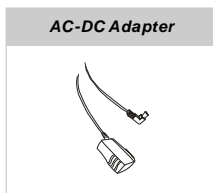
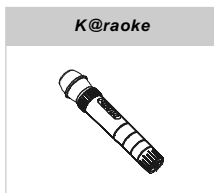
Thank you for purchasing this portable your K@raoke player. Please read this manual carefully before operating and reserve it for future reference. It will be helpful to you if you encounter any operational problem.

1. Heed all instructions.
2. Clean with soft cloth. Dampen with water if necessary.
3. Only use attachments/accessories specified by the manufacture.
4. Protect the power cord from being walked on or pinched particularly at plugs, convenience receptacles, and the point where they exit from the apparatuses.
5. Turn off your K@raoke before unplugging the power adapter.
6. Do not drop your K@raoke or subject it to heavy impact.
7. Avoid storing in direct sunlight, in places with high temperature, or in moist areas.
8. If your K@raoke head is covered by hand or your K@raoke is approached to the speaker, a howling sound may be generated. The microphone picking up the sound out from the speaker causes this phenomenon of howling.

PACKAGE CONTENTS

Package Contents

Package include:

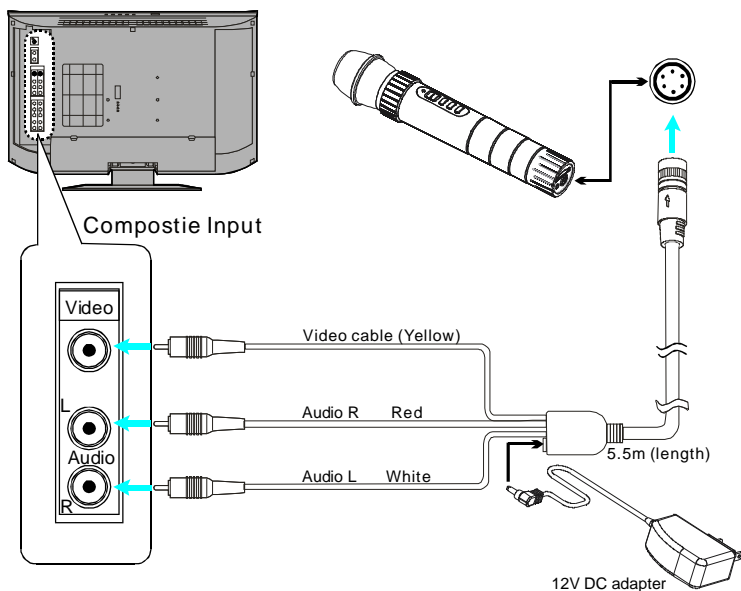


NOTE:

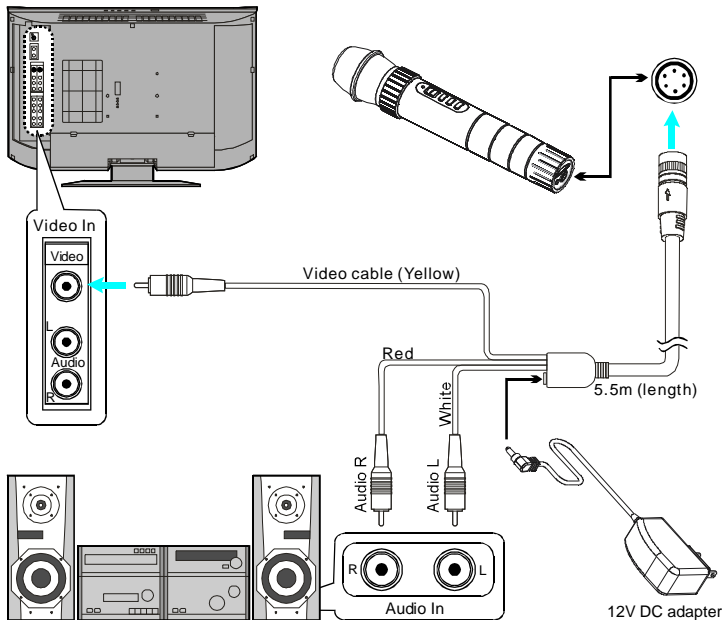
Actual products' appearance might vary slightly from the pictures shown.

BASIC OPERATION

Connect to a TV

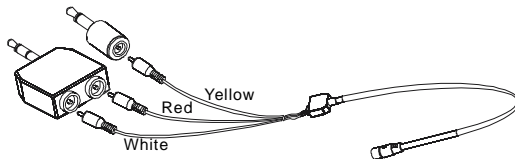


Connect to a TV and a Audio Amplifier



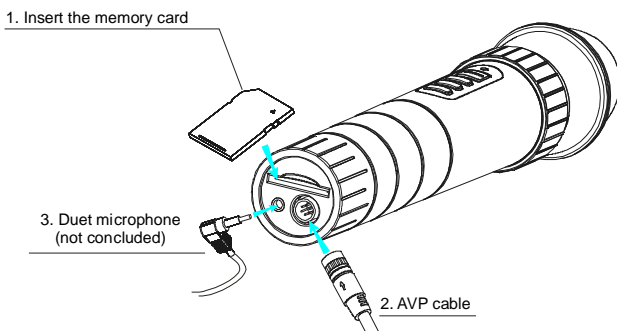
NOTE:

The accessory **RCA to 3.5mm convertor** is offered to connect your K@raoke with the device that its audio and video ports are not 3.5mm ports.



Terminal connection

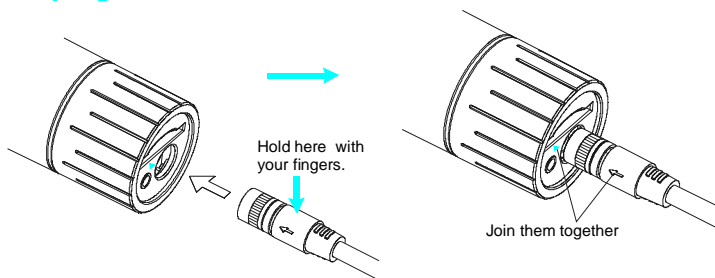
1. Store your favorite songs (MV) in the memory card first
2. Connect your K@raoke with TV and audio device by the AVP cable.
3. Sing together with your family or friends.



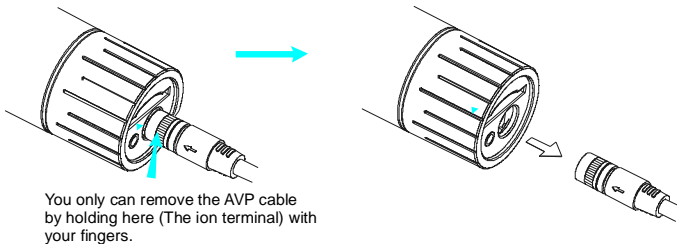
NOTE:

1. Your K@raoke can only support Xvid **AVI** format songs (MV).
2. The included accessory **File Conversion Software** is offered to convert other music format to AVI format.

How to plug in AVP cable



How to remove AVP cable



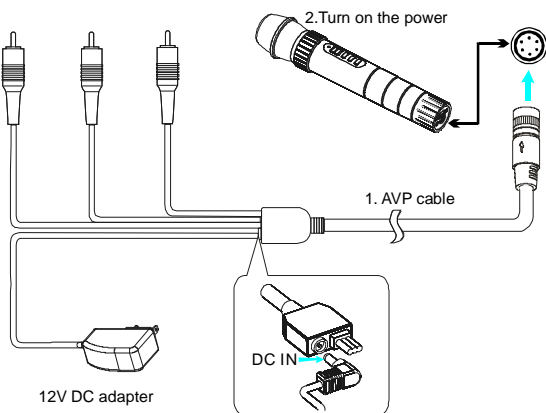
Power ON/ OFF

Follow steps1&2 to complete the power connection, and vise versa when disconnection.

Your K@raoke can be powered by:

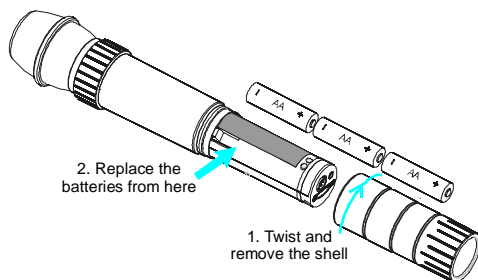
Option 1: 12V DC Adapter

Option 2: 3xAA Battery (Not included).



Battery Operation

Put batteries inside the battery compartment according to the polarity indicated.



Note:

1. Ni-MH battery is recommended for using and its playtime (3xAA 2000mAh Ni-MH battery) can be up to 150 minutes. Alkaline batteries also can be used but duration varies with quality of alkaline batteries.
2. When the batteries are under low power condition, you may encounter some phenomena like image freeze or system halted. Or you will see the screen shows "Sorry, error found!". Then simply replace with new batteries.
3. To prevent leakage of fluid from the batteries, remove the batteries when your K@raoke is not in use for over 1 month. If fluid leaks out from the batteries, carefully remove the batteries and change with new ones.
4. The batteries cannot be charged by the your K@raoke.

Caution:

Replace the batteries with the same type and keep them away from children.

BUTTON DEFINITION

1. Swivel ring

Volume control (when playing songs)&
direction control (in menu mode).
Rotate the swivel ring to do it.

2. Power indicator

Blue light: power on.
Red light: standby.
Red light flashes: low battery power.

3. ON/ OFF switch

Turn on or turn off your K@raoke.

4. ENTER button

Pause/ resume the playback.
Keep pressing it to repeat song or cancel
the repeat.

Note: ■ : pause

▶ : play

↺ : repeat current song

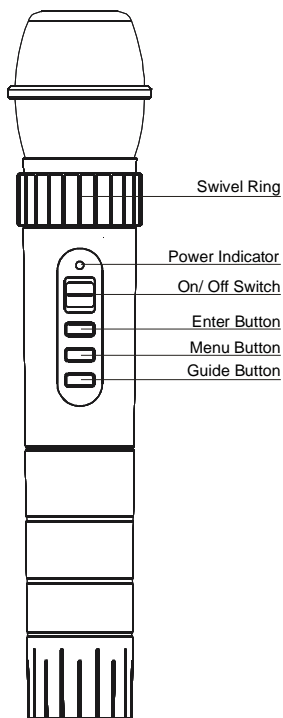
↻ : cancel the repeat

5. MENU button

Open menu screen.
Keep pressing it to skip to the next song.

6. GUIDE button

Switch from music to music with background
singer.
Keep pressing it to get stereo sound.



MENU OPERATION

Main menu operation

Press **MENU** button to display main menu screen.

It contains 4 item:

Play List、Song List、Setting、System. Rotate the swivel ring to go to the item you prefer and press **ENTER** to confirm. Press **MENU** button again to exit from the main menu.



Song List Operation

Song Selection

Select song in the **Song List** menu.

After turning on the power the song list will appear on the screen (You also can access to the song list menu in the main menu), rotate the swivel ring to go to the item you prefer and press ENTER to confirm.

1) **Play all MTV**

It will enter **Play List** menu, which contains all the songs stored in the memory card.
Then your K@raoke begins to playback the songs one by one.



2) **Random (Max 20 MTVs)**

It will enter **Play list** menu, which contains 20 songs that randomly selected by your K@raoke.
Then your K@raoke begins to playback the songs according to play list. (If there are less than 20 songs stored in the memory card, it will playback all of them.)



3) **Select a particular song**

1. **Select song:** rotate the swivel ring to go to the song you want and press **ENTER** button to confirm the selection.
2. **Cancel selecting:** rotate the swivel ring to go to the selected song and press **ENTER** button.
3. **Start playing:** press **MENU** button. The play list also appears on the screen simultaneously for a few seconds.



NOTE:

1. Ⓢ means the song is selected.
2. If there is no any button operation for 10 seconds after stopping selecting songs, the microphone will enter the Play List menu automatically and start playing the first selected song.
3. If no song is selected, the prompting message **select MTV first!** will be shown when press **MENU** button and it will return to the Song List menu automatically after 2 seconds.
4. If finish playing all the selected songs, it will return to the Song List menu automatically.

Enter Sleep Mode

1. If the microphone is idle for more than 8 minutes, it will enter sleep mode.
2. Press any button to reactivate it.
3. The power will be cut off automatically after entering sleep mode for 4 minutes. Slide **ON/ OFF** switch from **ON** to **OFF** and to **ON** position to restart your K@raoke.

Play List Operation

It contains all the selected songs.



1. Delete songs

Rotate the swivel ring to go the song you want to delete from the play list and keep pressing **ENTER** button for 1.5secs.

2. Set the song's order ahead

Rotate the swivel ring to go to the song you prefer and press **ENTER** button. It will become the next song to be played.

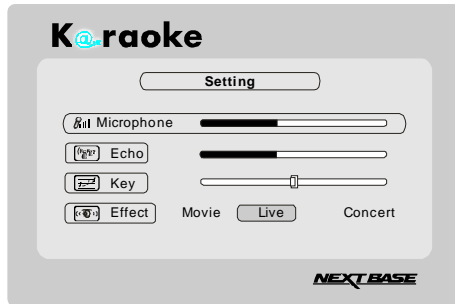
Setting Operation

It contains 4 items: *Microphone*, *Echo*, *Key* and *Effect*.

Rotate the swivel ring to go to the item you prefer and press **ENTER** to confirm.

Then rotate the swivel ring to adjust the value.

Press **ENTER** button again to confirm.



1. Microphone

Adjust the microphone's volume.

2. Echo

Adjust the echo's volume.

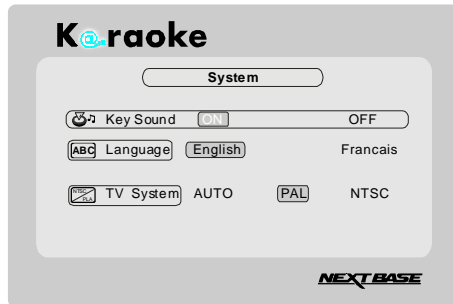
3. Key (Pitch control)

Adjust music's key or pitch.

4. Effect

You can choose *Live*, *Movie* or *Concert* to get different sound effect.

System Operation



1. Key sound
Turn on or turn off the key sound.
2. OSD language
There are 8 optional languages: English, German, French, Italy, Spanish, Korean, Japanese and Thai.
3. TV system
Choose **AUTO**, **NTSC** or **PAL** to match it with your connected TV system.

OTHERS

Trouble Shooting

Symptoms	Possible causes	Remedies
Can not turn on the player	The adaptor is not connected well	Connect the adaptor firmly
	Out of battery (If not connect with the adaptor)	Recharge the battery
No sound	The value of microphone or the connected device isn't turned on	Increase the volume to a suitable level
	The audio cable is disconnected	Connect the audio cable firmly
No picture	The connected device is not turned on	Turn on the connected device
	The video cable is disconnected	Connect the video cable firmly

Maintenance and clean your K@raoke as recommended in the operational instructions.

Have your K@raoke serviced by a qualified service technician if:

K@raoke has been exposed to rain or water.

K@raoke does not seem to operate normally.

K@raoke exhibits a marked change in performance.

DO NOT ATTEMPT TO SERVICE THE UNIT BY YOURSELF!



Karaoke-ENG-NB-B0