



# 7 X 50 BINOCULARS

**Model 65730**

## OPERATION INSTRUCTIONS



Distributed exclusively by Harbor Freight Tools®.

3491 Mission Oaks Blvd., Camarillo, CA 93011

Visit our website at: <http://www.harborfreight.com>



**Read this material before using this product.**

**Failure to do so can result in serious injury.**

**SAVE THIS MANUAL.**

Copyright© 2008 by Harbor Freight Tools®. All rights reserved. No portion of this manual or any artwork contained herein may be reproduced in any shape or form without the express written consent of Harbor Freight Tools. Diagrams within this manual may not be drawn proportionally. Due to continuing improvements, actual product may differ slightly from the product described herein. Tools required for assembly and service may not be included.

**For technical questions or replacement parts, please call 1-800-444-3353.**

Revised 09g

THANK YOU for choosing a **HARBOR FREIGHT TOOLS** product. For future reference, please complete the owner's record below:

**Model** \_\_\_\_\_ **Serial No.** \_\_\_\_\_ **Purchase Date** \_\_\_\_\_

SAVE THE RECEIPT, WARRANTY AND THESE INSTRUCTIONS. It is important that you read the entire manual to become familiar with the unit BEFORE you begin assembly.

## Technical Specifications

Optic Magnification:	7X
Field of View:	297 Ft. at 1,000 Yards
Angular Field:	7°
Ocular Optics Diameter:	17 mm
Objective Lens Diameter:	50 mm
Interpupillary Distance:	2-1/8" to 3"
Maximum Eye Relief:	18.7 mm



*READ ALL INSTRUCTIONS BEFORE USING THIS PRODUCT!*

## Safety Warnings and Precautions

**Read all instructions before using this product!**

1. **Never expose the binoculars to bright light, extreme temperatures changes or sudden impacts.**
2. **Do not let children use binoculars without adult supervision.**
3. **Store idle equipment.** When not in use, products must be stored in a dry location to inhibit damage from moisture and salt air.
4. **Check for damaged parts.** Before using any product, any part that appears damaged should be carefully checked to determine that it will operate properly and perform its intended function. Check for any broken or damaged parts and any other conditions that may affect its operation. Replace or repair damaged or worn parts immediately.
5. **Replacement parts and accessories.** When servicing, use only identical replacement parts. Use of any other parts will void the warranty.
6. **Your binoculars are not waterproof.** Do not allow this product to get wet.
7. **Never look into the sun or any bright light with your binoculars!** Damage to your eyes may occur, including blindness.

## **Introduction**

The use of binoculars help to expand your horizons by allowing you to see a distant object as if it were located very close to your eyes. When viewing sporting events, for trips, hunting, bird watching, hiking, boating, concerts or theater, your binoculars will enhance your view of the world.

### **Some Helpful Notes About Your Binoculars**

#### **Magnification:**

These binoculars are rated 7 X 50 magnification. The first number represents the power or magnification of the binoculars, while the second number represents the objective diameter expressed in millimeters.

Magnification is defined as the amount of increase over the actual image size. A 7 X binoculars magnifies the image by 7 times life size.

#### **Objective Diameter:**

The light gathering capabilities of binoculars are determined by the objective diameter. Binoculars with large objective diameters (above 50 mm) are designed for low-light conditions and astronomical use. Binoculars with small objective diameters (under 30 mm) are ideal in bright light. Binoculars that fall in the range between (30-50 mm) represent a good compromise between light gathering capability and size.

#### **Field Of View:**

The field of view is the extent of the area seen through the binoculars. It is expressed either in angular measure or in feet at a range of 1,000 yards.

The interpupillary distance of the eyes varies from 2.1" to 2.7". The adjustment of the Binoculars to your individual interpupillary distance is made by bending the barrels about their hinges, thus increasing or reducing separation of the eyepieces until the two circular fields of view fuse into one.

## **Maintenance**

Keep the rubber lens caps on the Binoculars and store in it's carrying case when not in use. Use a soft lens cleaning cloth with lens cleaning solution to clean the lenses. A good camera shop should carry these items.

## Using the Binoculars

Hold the Binoculars up to both eyes so that both are looking through the lenses. With one hand on each of the barrels, move the barrels up or down to adjust the distance between them, until you are seeing one complete and normal looking view through both the Binocular lenses. See Figure 1.

## Focusing

1. Close your right eye and sight an object with your left eye. Focus the binocular by rotating the center Focus Wheel until the image is sharp and clear.
2. Open your right eye and close your left eye. Rotate the Right Eyepiece until the object sighted is sharp and clear. See Figure 1.
3. **NOTE:** Both sides should now be in focus; you will only need to use the Focus Wheel to refocus on another object.

Figure 1



## Unpacking

When unpacking your Binoculars, check to make sure the following items are included. If any items are missing or broken, please call **HARBOR FREIGHT TOOLS** at **1-800-444-3353**.

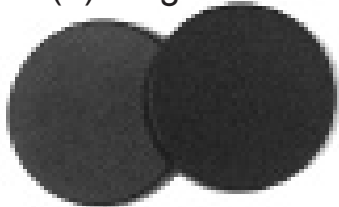
**NOTE:** These parts are listed and shown for illustration purposes only and are not available individually as replacement parts.



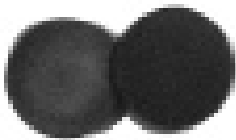
(1) Carrying Bag



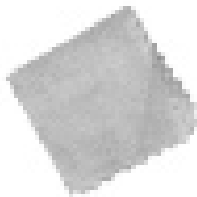
(1) Binoculars



(2) Large Lens Caps



(2) Small Lens Caps



(1) Optic Cleaning Cloth

---

## LIMITED 90 DAY WARRANTY

---

Harbor Freight Tools Co. makes every effort to assure that its products meet high quality and durability standards, and warrants to the original purchaser that this product is free from defects in materials and workmanship for the period of 90 days from the date of purchase. This warranty does not apply to damage due directly or indirectly, to misuse, abuse, negligence or accidents, repairs or alterations outside our facilities, criminal activity, improper installation, normal wear and tear, or to lack of maintenance. We shall in no event be liable for death, injuries to persons or property, or for incidental, contingent, special or consequential damages arising from the use of our product. Some states do not allow the exclusion or limitation of incidental or consequential damages, so the above limitation of exclusion may not apply to you. THIS WARRANTY IS EXPRESSLY IN LIEU OF ALL OTHER WARRANTIES, EXPRESS OR IMPLIED, INCLUDING THE WARRANTIES OF MERCHANTABILITY AND FITNESS.

To take advantage of this warranty, the product or part must be returned to us with transportation charges prepaid. Proof of purchase date and an explanation of the complaint must accompany the merchandise. If our inspection verifies the defect, we will either repair or replace the product at our election or we may elect to refund the purchase price if we cannot readily and quickly provide you with a replacement. We will return repaired products at our expense, but if we determine there is no defect, or that the defect resulted from causes not within the scope of our warranty, then you must bear the cost of returning the product.

This warranty gives you specific legal rights and you may also have other rights which vary from state to state.

**3491 Mission Oaks Blvd. • PO Box 6009 • Camarillo, CA 93011 • (800) 444-3353**