

Parts Manual for

SNAPPER[®]

GEAR & HYDRO DRIVE MODELS:

LT120G30DB, NLT120G30DB

LT125G38DB

ELT125G33DB

LT140H33DBV

ELT140H33DBV

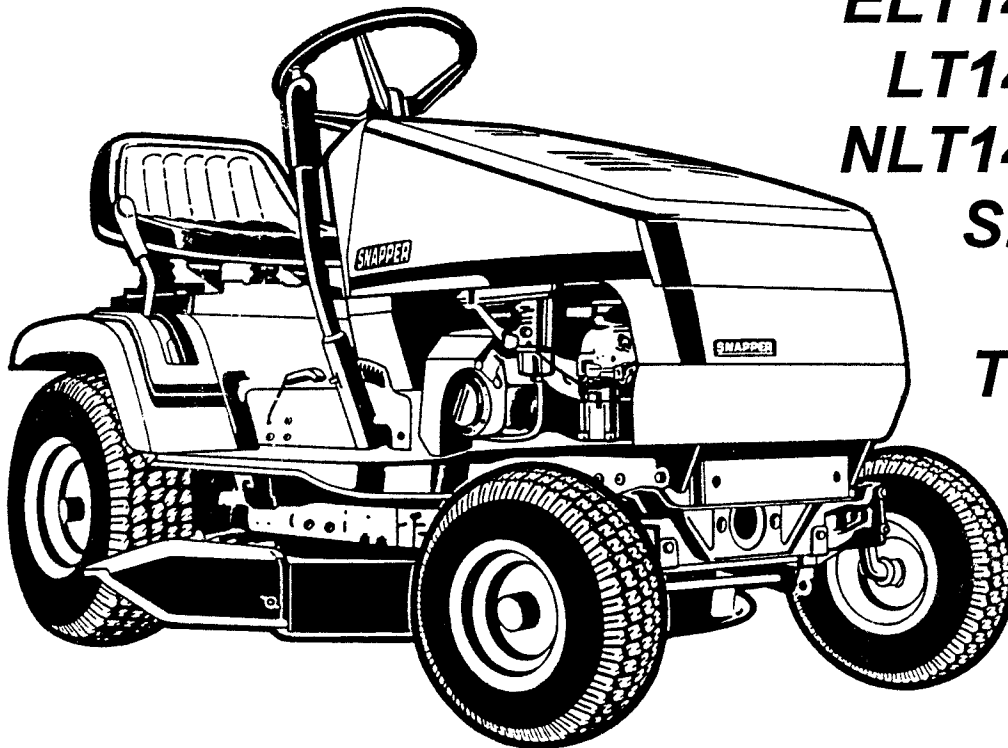
LT145H38DBV

NLT145H38DBV

SERIES "D"

LAWN

TRACTORS



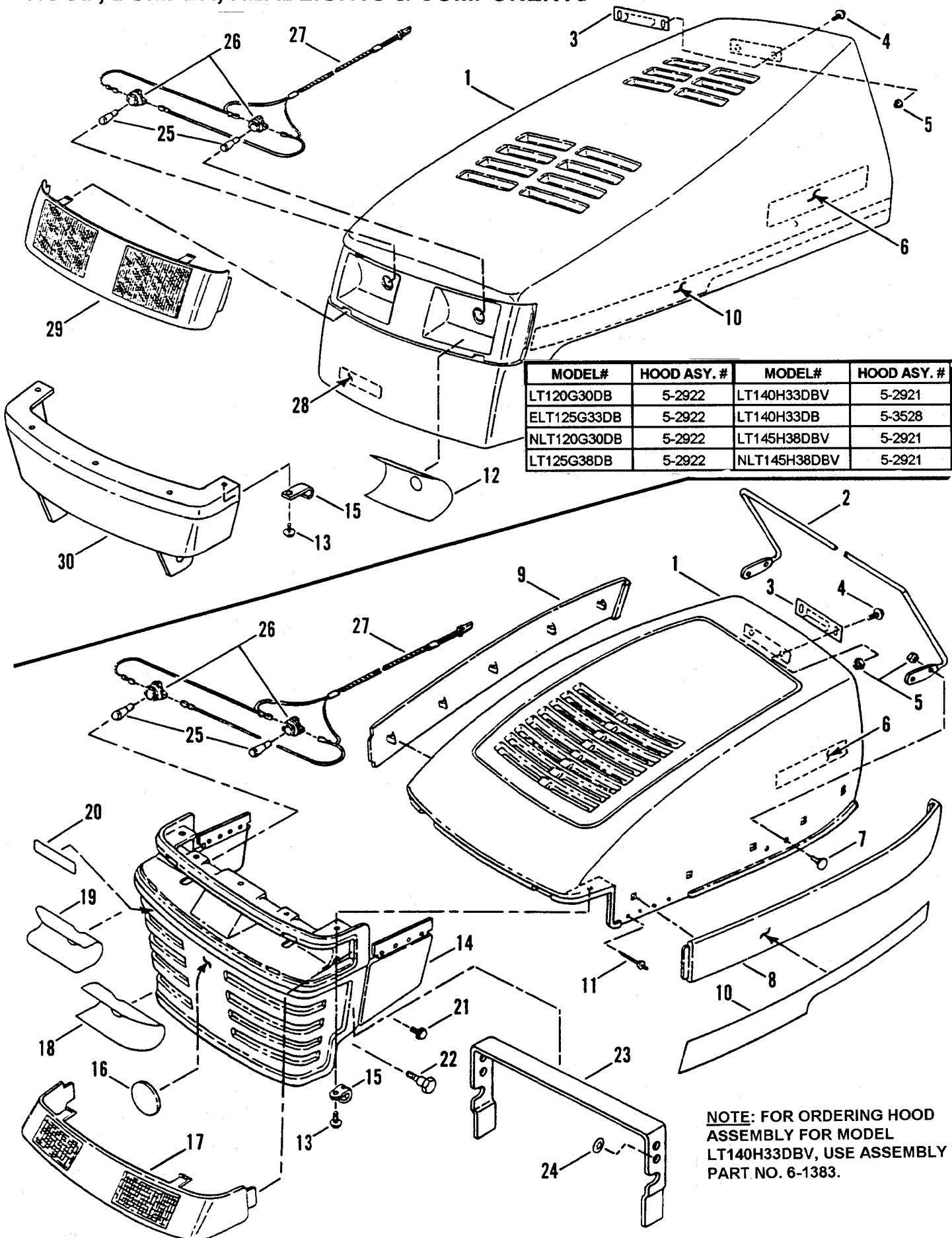
IT IS THE POLICY OF SNAPPER TO IMPROVE ITS PRODUCTS WHENEVER IT IS POSSIBLE AND PRACITCAL TO DO SO. WE RESERVE THE RIGHT TO MAKE CHANGES OR ADD IMPROVEMENTS AT ANY TIME WITHOUT INCURRING ANY OBLIGATION TO MAKE SUCH CHANGES ON PRODUCTS MANUFACTURED PREVIOUSLY.

SNAPPER[®]McDonough, GA., 30253 U.S.A.

CONTENTS

PAGE	GROUP
4,5	HOOD, BUMPER, HEADLIGHTS & COMPONENTS
6,7	STEERING WHEEL, CONSOLE, FUEL TANK
8,9	SEAT, REAR FENDER & COMPONENTS
10, 11	FRONT AXLE & FRONT WHEEL PARTS
11A, 11B	CAST FRONT AXLE
12, 13	TRANSMISSION GROUP (Hydro Drive) & REAR WHEELS
14, 15	TRANSMISSION GROUP (Gear Drive) & REAR WHEELS
16, 17	FRAME, CLUTCH, BRAKE & STEERING COMPONENTS
18, 19	BLADE ENGAGEMENT & TRANSMISSION CONTROLS
20	BELT GUIDE ASSEMBLY
21	ELECTRICAL COMPONENTS
22, 23	30" CUTTING DECK, BELTS, BRAKES
24, 25	33" CUTTING DECK, BELTS, BRAKES
26, 27	38" CUTTING DECK SUB-ASSEMBLY
28, 29	38" CUTTING DECK, BELTS, BRAKES
30	SPINDLE- 30" and 33" CUTTING DECK
31	SPINDLE- 38" CUTTING DECK
32, 33	ENGINE COMPONENTS
34	ELECTRICAL- Briggs & Stratton Engines (14, 15 & 15.5 HP)
35	ELECTRICAL- Briggs & Stratton Engines (12 & 12.5 HP)
36, 37	DECALS
38	IMPLEMENT LIFT PARTS

HOOD, BUMPER, HEADLIGHTS & COMPONENTS

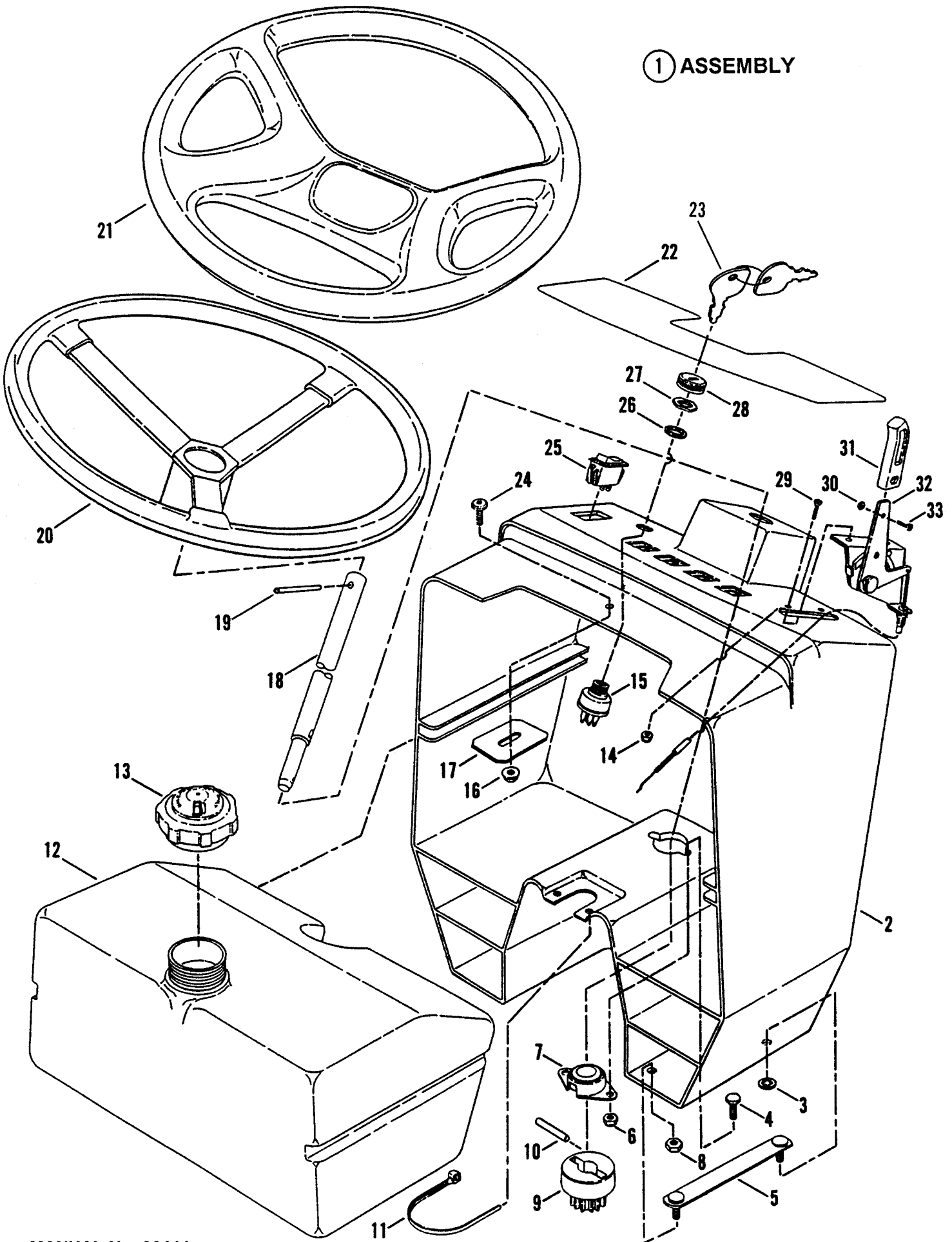


HOOD, BUMPER, HEADLIGHTS & COMPONENTS

ITEM	PART NO.	DESCRIPTION
1	2-4605	HOOD, (All Models except LT140H33DB)
--	2-4471	HOOD, Mozart (Model LT140H33DB)
2	1-6766	ROD, Hood Support
3	2-4718	LATCH, Spring
4	9-0999	SCREW, 1/4-20 x 5/8" Truss Head, Torx (2)
5	7-6978	NUT, 1/4-20 Hex Nyloc (6)
6	2-4903	DECAL - SNAPPER, 8" Molded Logo, White Letters (Gear Drive Models. LT120G30DB, LT125G38DB, NLT120G30DB & ELT125G33DB)
--	3-6438	DECAL - SNAPPER, 8" Molded Logo, Silver Letters (Hydro Drive Models. LT140H33DBV & LT140H33DB)
7	9-0803	BOLT, 1/4-20 x 5/8" Flat Head Carriage, Grade 5 (4)
8	2-9572	PANEL, Hood (Left Hand) (Black) (Model ELT140H33DBV)
9	2-9571	PANEL, Hood (Right Hand) (Black) (Model ELT140H33DBV)
10	2-7840	DECAL, Hood (Right Hand) (Model LT140H33DBV) (Hydro Drive)
--	2-7841	DECAL, Hood (Left Hand) (Model LT140H33DBV) (Hydro Drive)
--	2-7824	DECAL, Hood (Right Hand) (Model LT120G30DB) (Gear Drive)
--	2-7825	DECAL, Hood (Left Hand) (Model LT120G30DB) (Gear Drive)
--	2-9076	DECAL, Hood (Right Hand) (Model LT140H33DB) (Hydro Drive)
--	2-9075	DECAL, Hood (Left Hand) (Model LT140H33DB) (Hydro Drive)
--	4-2690	DECAL, Hood (Right Hand) (Model LT125G38DB) (Gear Drive)
--	4-2691	DECAL, Hood (Left Hand) (Model LT125G38DB) (Gear Drive)
--	2-7824	DECAL, Hood (Right Hand) (Model LT120G30DB) (Gear Drive)
--	2-7825	DECAL, Hood (Left Hand) (Model LT120G30DB) (Gear Drive)
--	2-7826	DECAL, Hood (Right Hand) (Model ELT125G33DB) (Gear Drive)
--	2-7827	DECAL, Hood (Left Hand) (Model ELT125G33DB) (Gear Drive)
--	2-8637	DECAL, Hood (Left Hand) (Models LT145H38DBV & NLT145H38DBV) (Hydro Drive)
--	2-8636	DECAL, Hood (Right Hand) (Models LT145H38DBV & NLT145H38DBV) (Hydro Drive)
11	9-1095	RIVET, 1/8" Pop (8)
12	1-7175	DECAL, Clear Lens (Left Hand) (Model LT140H33DBV) (Hydro Drive)
--	1-7174	DECAL, Clear Lens (Right Hand) (Model LT140H33DBV) (Hydro Drive)
13	9-1106	SCREW, M4.8 x 1.59 x 16.00MM, Special (5)
14	2-9570	GRILLE, Hood (Model ELT140H33CBV) (Hydro Drive)
15	2-6482	CLIP, "J"
16	7-1544	DECAL, Molded Medallion (Hydro Models Only!)
17	2-9602	LENS, Grille (Headlights)
18	2-6180	DECAL, Reflect (Left Hand) (Model LT140H33DB) (Hydro Drive)
19	2-6179	DECAL, Reflect (Right Hand) (Model LT140H33DB) (Hydro Drive)
20	2-2968	DECAL - SNAPPER, 4" Molded Logo (Silver Letters - Blue Stripe) (Hydro Models Only)
21	9-0858	SCREW, 5/16-18 x 1/2" Self-Tapping, Grade 5 (4)
22	2-4061	BOLT, Shoulder, 3/8-16 x 1-1/4" Hex Socket, Torx (2)
23	3-4324	BRACE, Hood Support
24	1-1791	RETAINER, Bolt
25	2-6172	BULB, Headlights (2)
26	2-4709	SOCKET, Headlight Bulb (2)
27	2-6171	HARNESS, Headlight Wiring
28	2-4904	DECAL- SNAPPER, 4" Molded Logo (White Letters & Stripe) (Gear Drive Models Only)
29	2-4892	LENS, Solid Black (Models without Headlights)
--	2-4893	LENS, Clear (Models with Headlights)
30	2-9620	BUMPER, Front Hood Support

STEERING WHEEL, CONSOLE, FUEL TANK

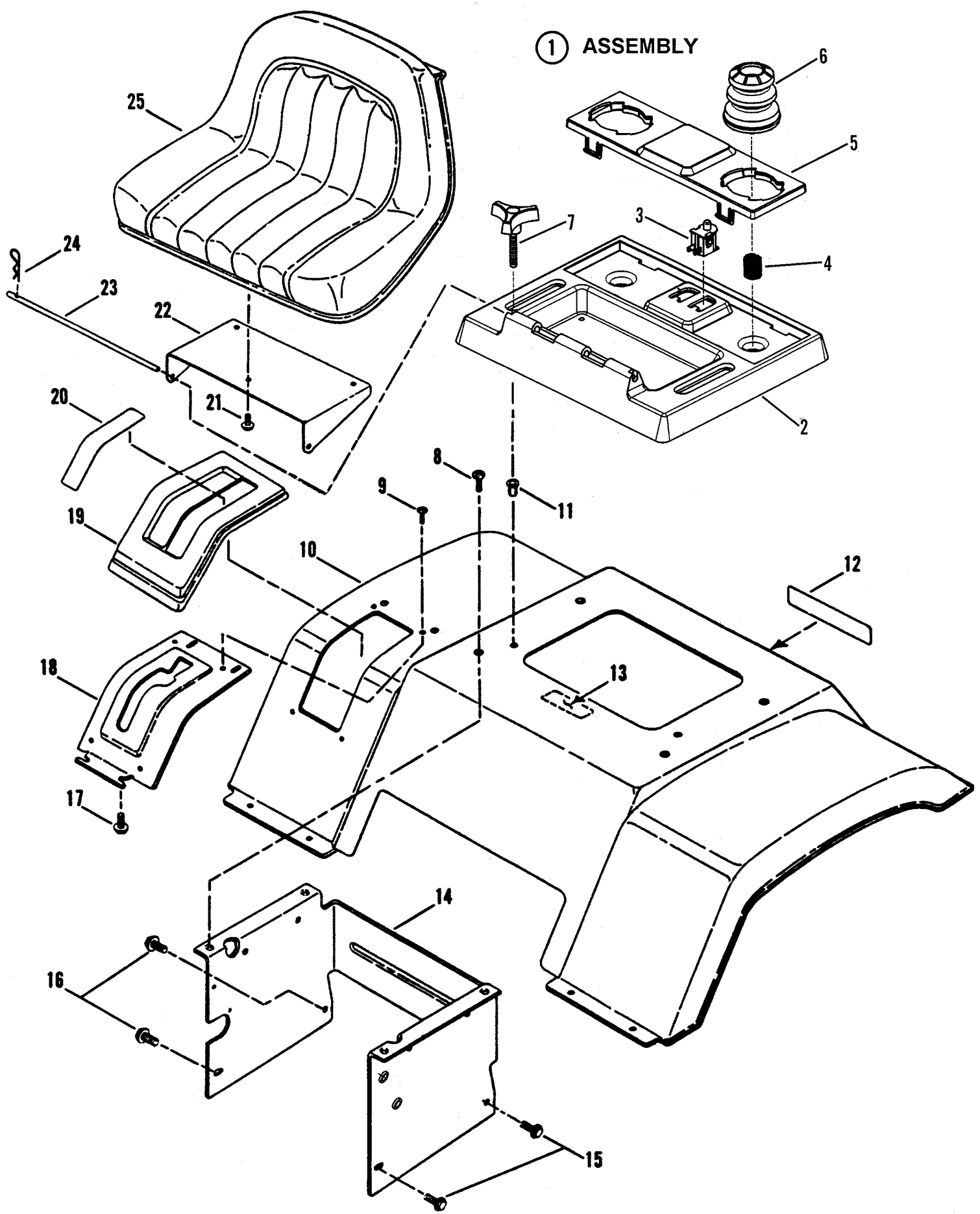
① ASSEMBLY



STEERING WHEEL, CONSOLE, FUEL TANK

ITEM	PART NO.	DESCRIPTION
1	5-3746	ASSEMBLY, Console (Includes items 2 thru 7)
2	2-8565	CONSOLE
3	1-1791	RETAINER (4)
4	9-1495	SCREW, 1/4-20 x 3/4" Hex Head Cap, Grade 5 (2)
5	5-2891	ASSEMBLY, Strap-Clinch Stud (2)
6	7-6978	NUT, 1/4-20 Hex Nyloc (2)
7	2-6196	ASSEMBLY, Flange Bearing
8	9-1575	NUT, 5/16-18 Hex Center Lock, Grade 5 (4)
9	2-2368	GEAR, Pinion, Steering Shaft
10	2-2369	PIN, Dowel, 1/4 x 1-1/4"
11	2-4641	TIE, Wire
12	5-2907	ASSEMBLY, Fuel Tank (Includes item 13)
13	1-4363	CAP, Fuel Tank
14	9-1599	NUT, #10-24 Hex Nyloc (2)
15	1-8562	KEYSWITCH (Includes item 27) (Gear Drive Models)
--	2-6343	KEYSWITCH (Includes item 27) (Hydro Drive Models)
16	9-0951	NUT, 5/16-18 Hex Flange Center Lock
17	3-3883	BRACKET, Hood Latch Catch
18	2-2380	SHAFT, Steering
19	1-2765	ROLL-PIN
20	2-8622	STEERING WHEEL (Gear Drive Models)
21	2-9595	STEERING WHEEL (Hydro Drive Models)
22	2-8643	DECAL, Console, (Gear Drive Models - Without Lights)
--	2-8561	DECAL, Console (Hydro Drive Models - With Lights)
23	1-1138	KEY, Pair
24	9-1001	SCREW, 5/16-18 x 5/8" Truss Head, Torx
25	2-3187	SWITCH, Lights (Hydro Drive Models)
26	2-9714	SPACER
27	2-9721	NUT, 5/8-32 Hex
28	2-3506	BEZEL
29	9-1188	SCREW, #10-24 x 5/8" Machine (2)
30	9-1018	NUT, #8-32 Hex
31	2-3655	HANDLE, Throttle Control
32	2-4642	CONTROL, Throttle
33	9-1017	SCREW, #8-32 x 3/8" Cross-Recessed, Machine

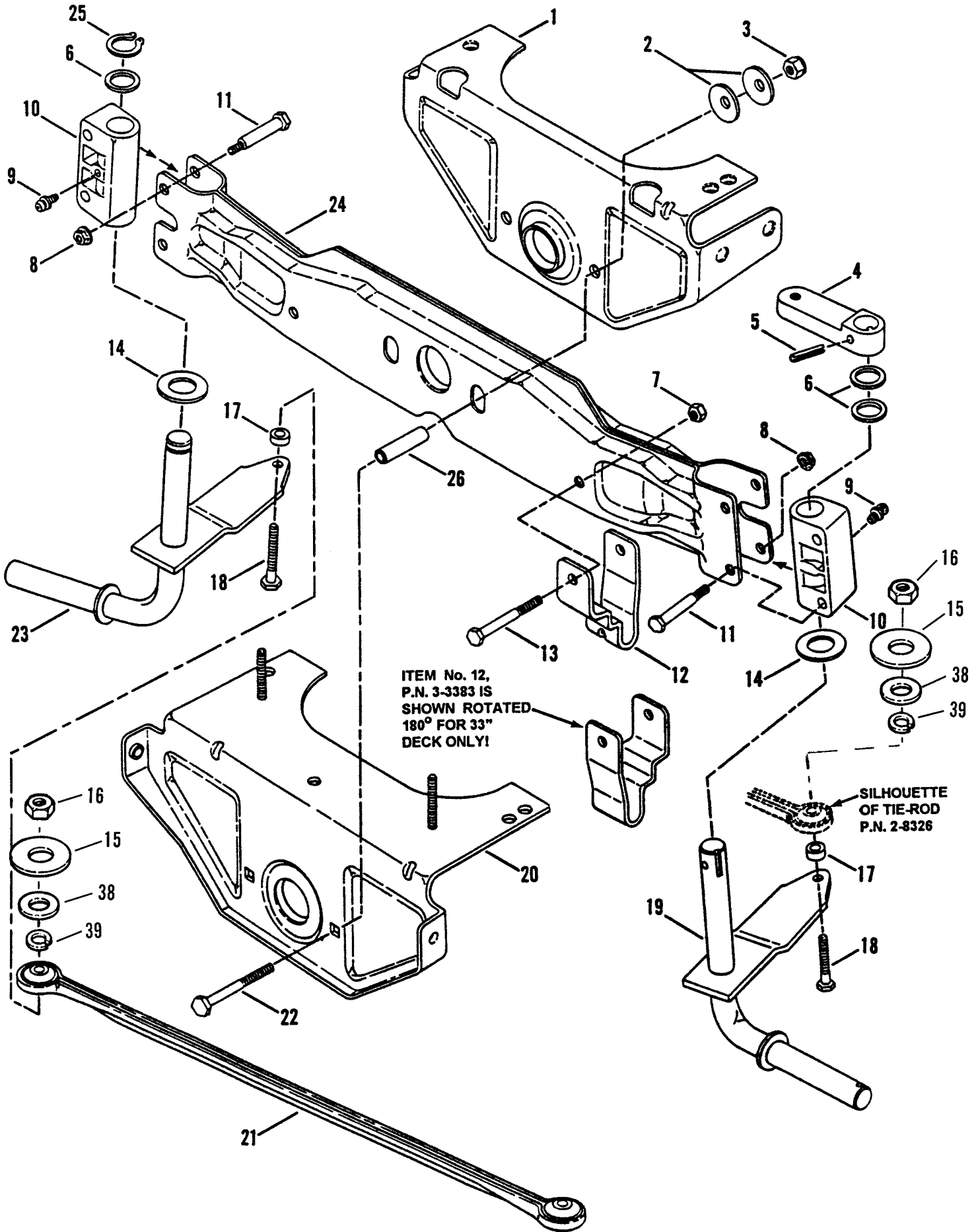
SEAT, REAR FENDER & COMPONENTS



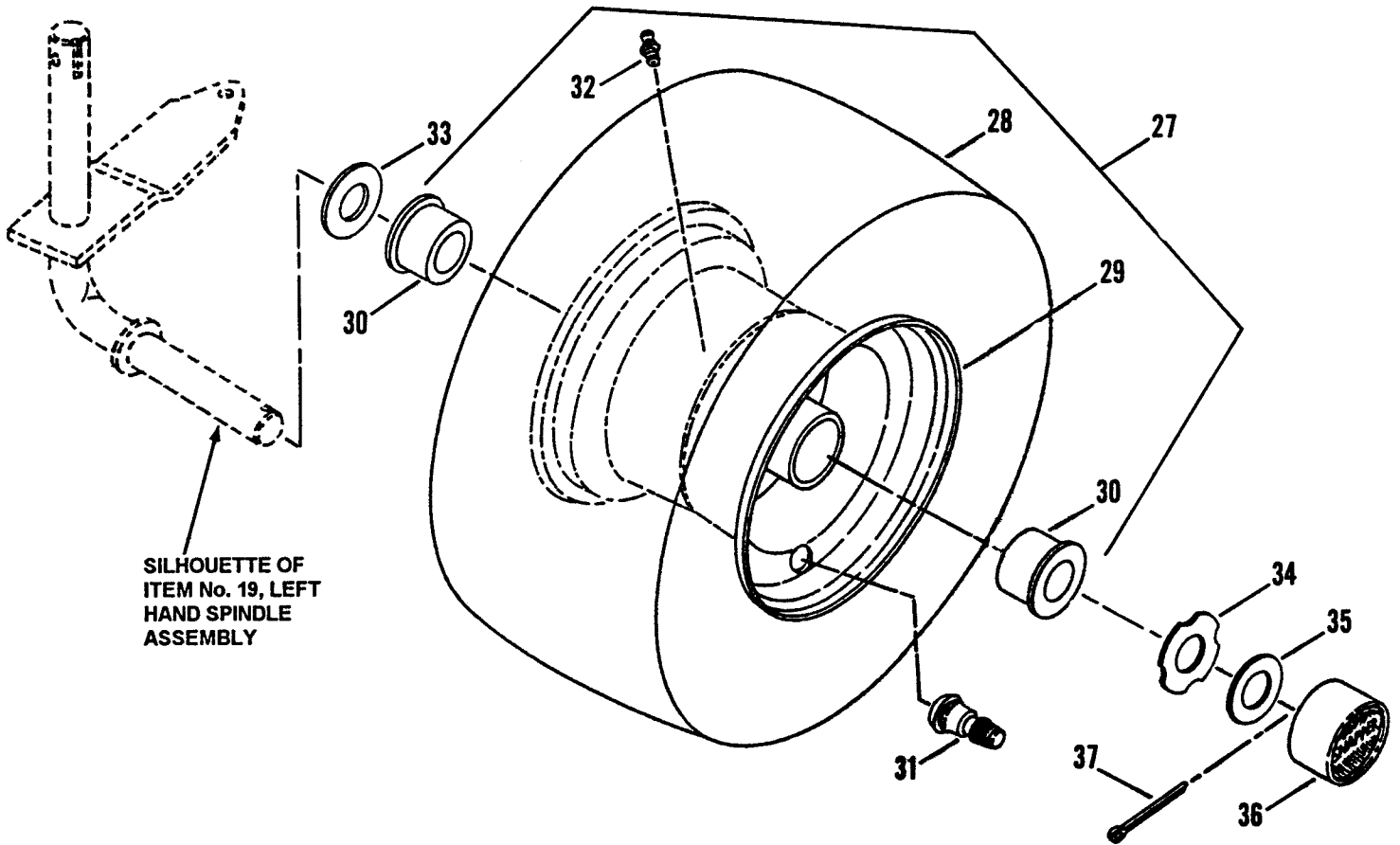
SEAT, REAR FENDER & COMPONENTS

ITEM	PART NO.	DESCRIPTION
1	5-3761	ASSEMBLY, Seat Support (Includes items 2, 3, 4 & 5)
2	2-8579	SUPPORT, Seat
3	2-3354	SWITCH, Seat, Gray, NC
4	2-2759	SPRING (2)
5	2-8580	HOLDER, Cushion
6	1-9109	CUSHION, Seat (2)
7	1-7875	KNOB, Seat Adjustment (2)
8	9-1001	SCREW, 5/16-18 x 5/8" Truss Head, Torx (4)
9	9-0362	SCREW, 1/4-20 x 5/8" Hex Washer Head, Self-Tapping (4)
10	3-3314	PAN, Seat (Fender)
11	9-1761	RIV-NUT, 5/16-18 Round (2)
12	2-4905	DECAL - SNAPPER, 7.28" Molded Logo, White Letters & Stripe (Gear Drive Models)
--	2-2971	DECAL - SNAPPER, 7.28" Molded Logo, Silver Letters & Blue Stripe (Hydro Drive Models)
13	2-6415	DECAL - CAUTION, Battery Location
14	3-4711	SUPPORT, Fender, Electric Clutch
15	9-1523	SCREW, 5/16-18 x 5/8" Hex Washer Head, Swage Form (2 ea. on Right Side & 2 ea. on Left Side for Gear Drive Models Only!) (2 ea. on Left Side for Hydro Drive Models Only!) (4)
16	9-1524	SCREW, 5/16-18 x 1-1/4" Hex Washer Head, Swage Form (Used on Right Side for Hydro Models Only!) (2)
17	9-1105	SCREW, #10-16 x 1/2" Hex Washer Head, Self-Tapping (4)
18	3-4420	DETENT, Shift (Gear Drive Models)
--	3-3120	DETENT, Shift (Hydro Drive Models)
19	2-4894	COVER, Shift
20	2-9623	DECAL, Shift Cover, 5-Speed (Gear Drive Models)
--	1-6576	DECAL, Shift Cover, 5-Speed (Hydro Drive Models)
21	9-1525	BOLT, 5/16-18 x 1/2" Hex Flange Lock, Grade 5 (3)
22	3-3318	BRACKET, Seat Support
23	3-3435	ROD, Seat Hinge
24	9-1503	PIN, 3/32 x 1-1/2" Hair
25	1-7879	SEAT, Operator's (LT120G30DB, NLT120G30DB & LT125G38DB)
--	7-1564	SEAT, Operator's, High Back, 3-Hole (LT140H33DBV, LT145H38DBV & NLT145H38DBV)
--	2-8621	SEAT, Operator's (ELT125G33DB & ELT140H33DB)

FRONT AXLE & FRONT WHEEL PARTS



FRONT AXLE & FRONT WHEEL PARTS

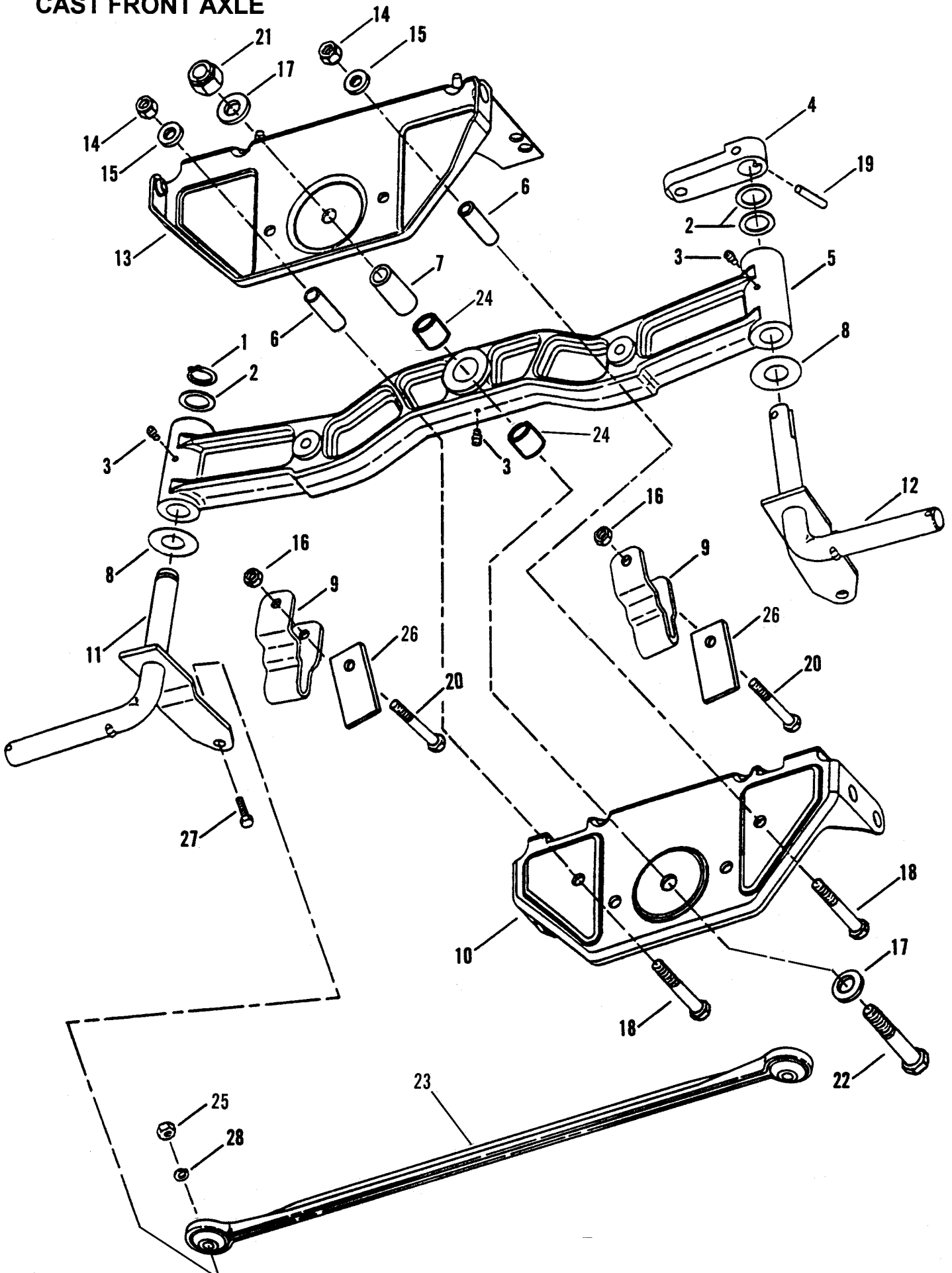


SILHOUETTE OF
ITEM No. 19, LEFT
HAND SPINDLE
ASSEMBLY

ITEM	PART NO.	DESCRIPTION
1	3-3374	BRACKET, Axle (Rear)
2	1-2063	WASHER, Cone (4)
3	7-6979	NUT, 3/8-16 Nyloc (2)
4	1-9034	ARM, Steering
5	9-0842	ROLL-PIN, 1/4 x 1-1/4"
6	1-0935	WASHER, Shim (3)
7	9-0184	NUT, 5/16-18 Center Lock, Gr. 5 (2)
8	9-0477	NUT, 1/4-20 Hex Flange Top-Lock, Grade B (2)
9	1-3864	FITTING, Lube (2)
10	1-9467	BEARING, Spindle (2)
11	2-2758	BOLT, 1/4-20 x 1-1/64" Shoulder (4)
12	3-3383	BRACKET, Deck Hanger (2)
13	9-1046	SCREW, 5/16-18 x 2 -1/2" Hex Head Cap, Grade 5 (2)
14	3-1036	WASHER, Thrust (2)
15	1-6360	WASHER, 13/32 x 1-3/8" Flat (2)
16	9-1585	NUT, 3/8-16 Hex Head Center Lock, Grade 5 (2)
17	2-4180	SPACER, Tie-Rod (2)
18	9-1553	SCREW, 3/8-16 x 1-3/4" Hex Head Cap, Grade 5 (2)
19	4-1246	SPINDLE ASSY., Left Hand, Long (For 13" Tires - 30" & 33" Decks)
--	4-1250	SPINDLE ASSY., Left Hand, Short (For 15" Tires - 38" Decks)
20	5-2490	BRACKET ASSEMBLY, Axle (Front)
21	2-8326	TIE-ROD
22	9-0590	BOLT, 3/8-16 x 3" Hex Hd, Gr.5 (2)

ITEM	PART NO.	DESCRIPTION
23	4-1245	SPINDLE ASSY., Right Hand, Long (For 13" Tires - 30" & 33" Decks)
--	4-1251	SPINDLE ASSY., Right Hand, Short (For 15" Tires - 38" Decks)
24	4-0986	AXLE, Front
25	1-0746	RING, Retaining
26	2-6595	SPACER (2)
27	5-2681	ASSEMBLY, Front Tire & Rim, 30" & 33" Decks (Includes items 28 thru 32)
--	5-2957	ASSEMBLY, Front Tire & Rim, 38" Decks (Includes items 28 thru 32)
28	2-2773	TIRE, 13 x 5.00 (30" & 33" Decks)
--	2-6109	TIRE, 15 x 6.00 (38" Decks)
29	2-2772	RIM, 5.50 x 4.00
30	1-4483	BEARING, Wheel (2)
31	1-2234	VALVE, Air (Snap-In)
32	1-3876	FITTING, Lube
33	3-4453	WASHER, 3/4" I.D.
34	2-9618	WASHER, Hub-Cap Retaining
35	2-9617	WASHER, Flat, 49/64" I.D. (2)
36	1-1022	HUB-CAP
37	9-1516	COTTER-PIN, 5/32 x 1"
38	9-1514	WASHER, 3/8 x 13/16" Flat (2)
39	9-1320	WASHER, 3/8 x 11/16" Split Lock (2)

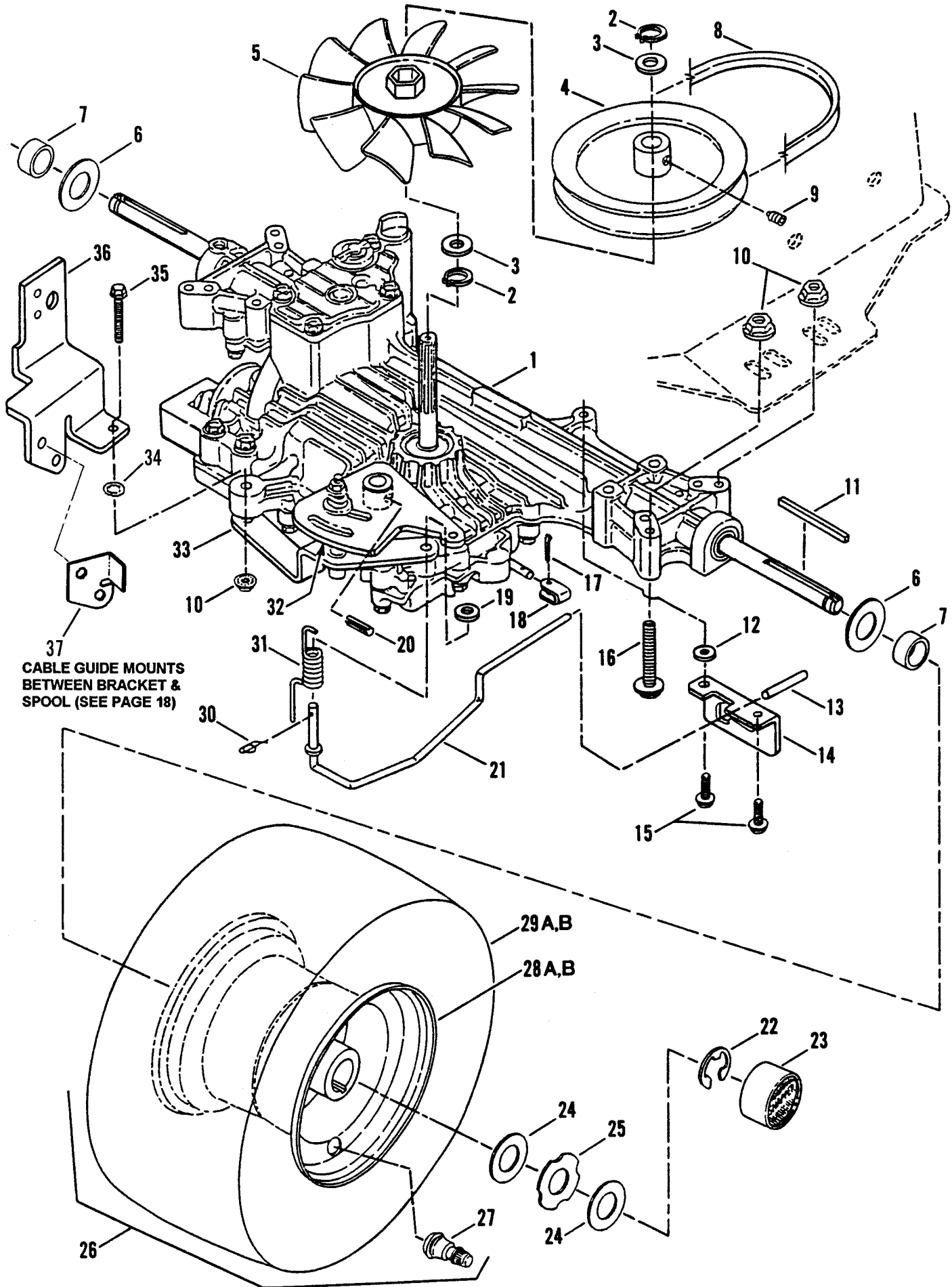
CAST FRONT AXLE



CAST FRONT AXLE

ITEM	PART NO.	DESCRIPTION
1	1-0746	RING, 5/8 External Retaining
2	1-0935	WASHER, 49/64 x 1-1/8 x 1/16" Flat (3)
3	1-4669	FITTING, 3/16 Lube (3)
4	1-9034	ARM, Steering
5	2-8647	AXLE, Cast
6	2-8666	SPACER, 25/64 x 1/2 x 1-13/16" (2)
7	2-8689	SPACER, Center
8	3-1036	WASHER, Thrust (2)
9	3-3383	BRACKET, Deck Hanger (2)
10	3-4740	BRACKET, Cast Axle (Rear)
11	4-1245	WELDMENT, Right Hand Spindle Wheel (Long)
12	4-1246	WELDMENT, Left Hand Spindle Wheel (Long)
13	5-4515	ASSEMBLY, Cast Axle Front Bracket
14	7-6979	NUT, 3/8-16 Hex Nyloc (2)
15	9-0122	WASHER, 3/8 x 5/64" Flat (2)
16	9-0184	NUT, 5/16-18 Hex Center Lock (3)
17	9-0250	WASHER, 1/2 x 3/32" Flat (3)
18	9-0795	SCREW, 3/8-16 x 2-3/4" Hex Head Cap, Grade 2 (2)
19	9-0842	PIN, 1/4 x 1-1/4" Roll
20	9-0831	SCREW, 5/16-18 x 2-3/4" Hex Head Cap, Grade 5 (2)
21	9-1121	NUT, 1/2-13 Hex Nyloc
22	9-1694	SCREW, 1/2-13 x 3" Hex Head Cap Grade 5
23	2-8326	TIE ROD, Reduced Radius
24	1-2706	BEARING, Sleeve (2)
25	9-1302	NUT, 3/8-16 Hex, Grade 5 (2)
26	3-5372	SPACER, Steering Stop (2)
27	9-1497	SCREW, 3/8-16 x 1-1/2" Hex Head Cap, Grade 5 (2)
28	9-1320	WASHER, 3/8 Split Lock (2)

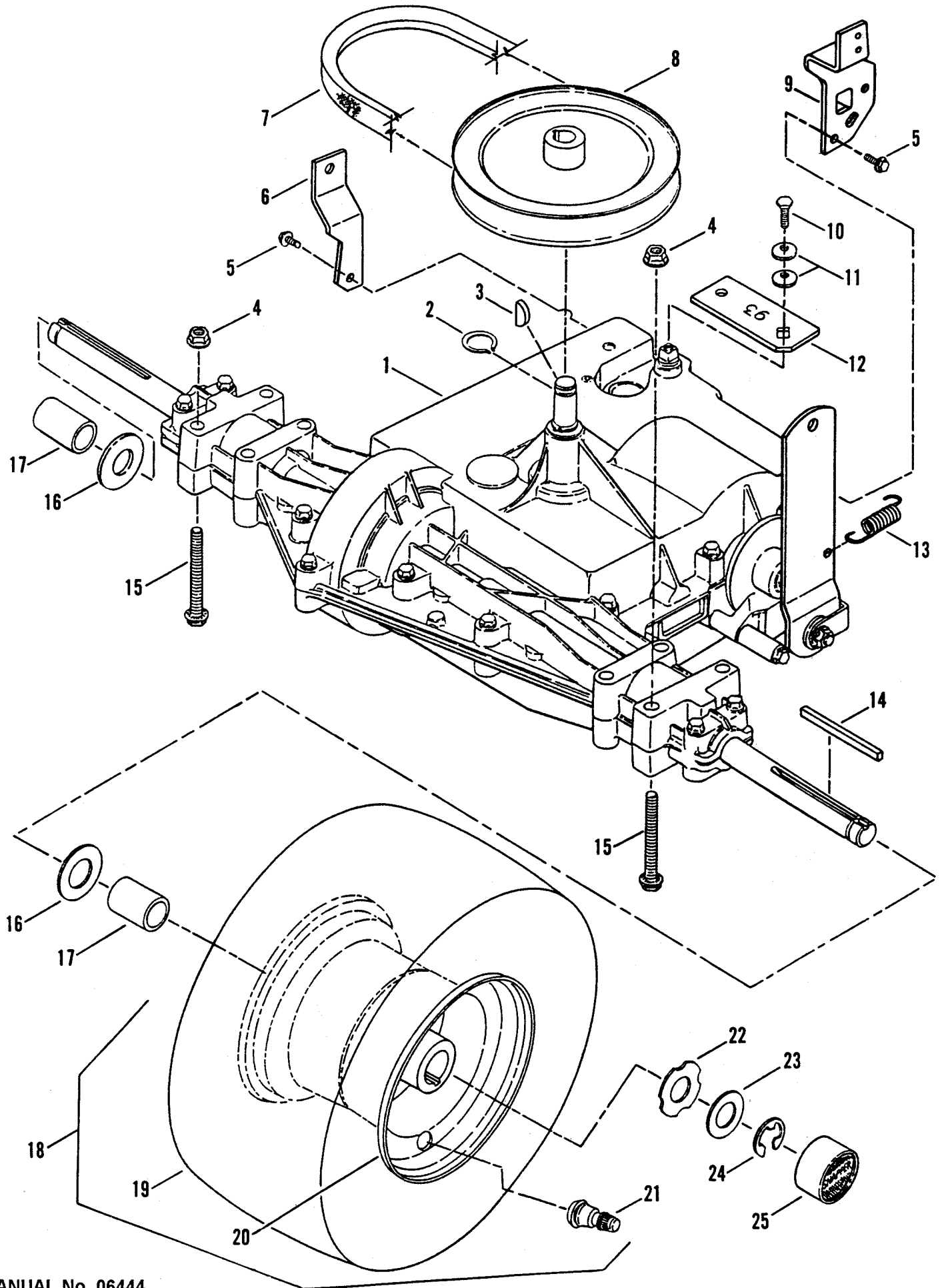
TRANSMISSION GROUP (Hydro Drive) & REAR WHEELS



TRANSMISSION GROUP (Hydro Drive) & REAR WHEELS

ITEM	PART NO.	DESCRIPTION
1	5-3368	TRANSAXLE, Hydro Drive, Tuff-Torq Mode K55 (Models LT140H33DBV & ELT140H33DB)
2	2-8078	RING, Retaining (2)
3	2-8084	WASHER, Fan/Hub (2)
4	2-8077	PULLEY, Drive
5	2-8076	FAN
6	3-4453	WASHER, Flat, 3/4" I.D. x 1-1/2" O.D.
7	2-8049	SPACER (2)
8	3-6584	BELT, TTK50/K55 Traction Drive (Hydro Drive Only!)
9	9-1277	SETSCREW, 1/4-20 x 5/16" Locking
10	9-1601	NUT, 5/16-18 Hex Flange Lock, Grade 5 (5)
11	1-7173	KEY, Square, 3/16 x 3/16 x 2 1/2" (2)
12	3-2070	WASHER, Flat, 13/32" I.D. x 3/4" O.D.
13	3-4137	GRIP, Roll Release
14	3-4139	DETENT, Roll Release
15	9-1284	SCREW, 3/8-16 x 1-3/4" Self-Tapping (2)
16	9-0702	BOLT, 5/16-18 x 2-1/4" Hex Flange Lock (4)
17	9-1516	COTTER-PIN, 5/32 x 1"
18	3-4154	LINK, Roll Release
19	9-1296	WASHER, Flat, 11/32" I.D. x 11/16" O.D.
20	3-4146	ROLL-PIN, Speed Control Arm
21	3-4140	WIREFORM, Roll Release
22	2-9738	RING, Retaining
23	1-1022	HUB-CAP
24	2-9617	WASHER, Flat, 3/4" x 1-5/16" O.D. (2)
25	2-9618	WASHER, Hub-Cap Retaining
26	5-2845	ASSEMBLY, Rear Tire & Rim (All Models except those listed below) (Includes items 27, 28A, & 29A)
--	5-2846	ASSEMBLY, Rear Tire & Rim (Models LT125G38DB, LT145H38DBV & NLT145H38DBV) (Includes items 27, 28B, & 29B)
27	1-2234	VALVE, Air (Snap-in)
28A	2-4453	RIM, 8 x 5.375
28B	2-4454	RIM, 8 x 7.00
29A	2-6112	TIRE, 18 x 7.50
29B	2-6113	TIRE, 18 x 8.50
30	3-4162	COTTER-PIN, 5/16 Self-Locking
31	3-4155	SPRING, Torsion (Roll Release)
32	5-3386	ASSEMBLY, Speed Control/Friction (Includes Part No's. Listed Below)
--	4-1612	WELDMENT, Speed Control Arm
--	2-8036	SPRING
--	3-4192	STUD, Friction
--	9-0593	NUT, 3/8-16 Hex Flange Top Lock
--	9-1331	WASHER, Flat 13/32 I.D. x 1-1/2" O.D. (2)
--	3-4267	WASHER, Friction Pad (2)
33	5-3380	SUPPORT, Friction Stud Assembly (Includes Part No's. Listed Below)
--	1-2306	BUSHING, Flange
--	3-4178	SUPPORT, Friction Stud
34	1-1791	RETAINER, 5/16 Bolt
35	9-1592	BOLT, 5/16-18 x 2" Hex Flange Lock, Grade 5
36	3-4400	BRACKET, Spool (Hydro Drive Units)
37	3-4399	GUIDE, Cable

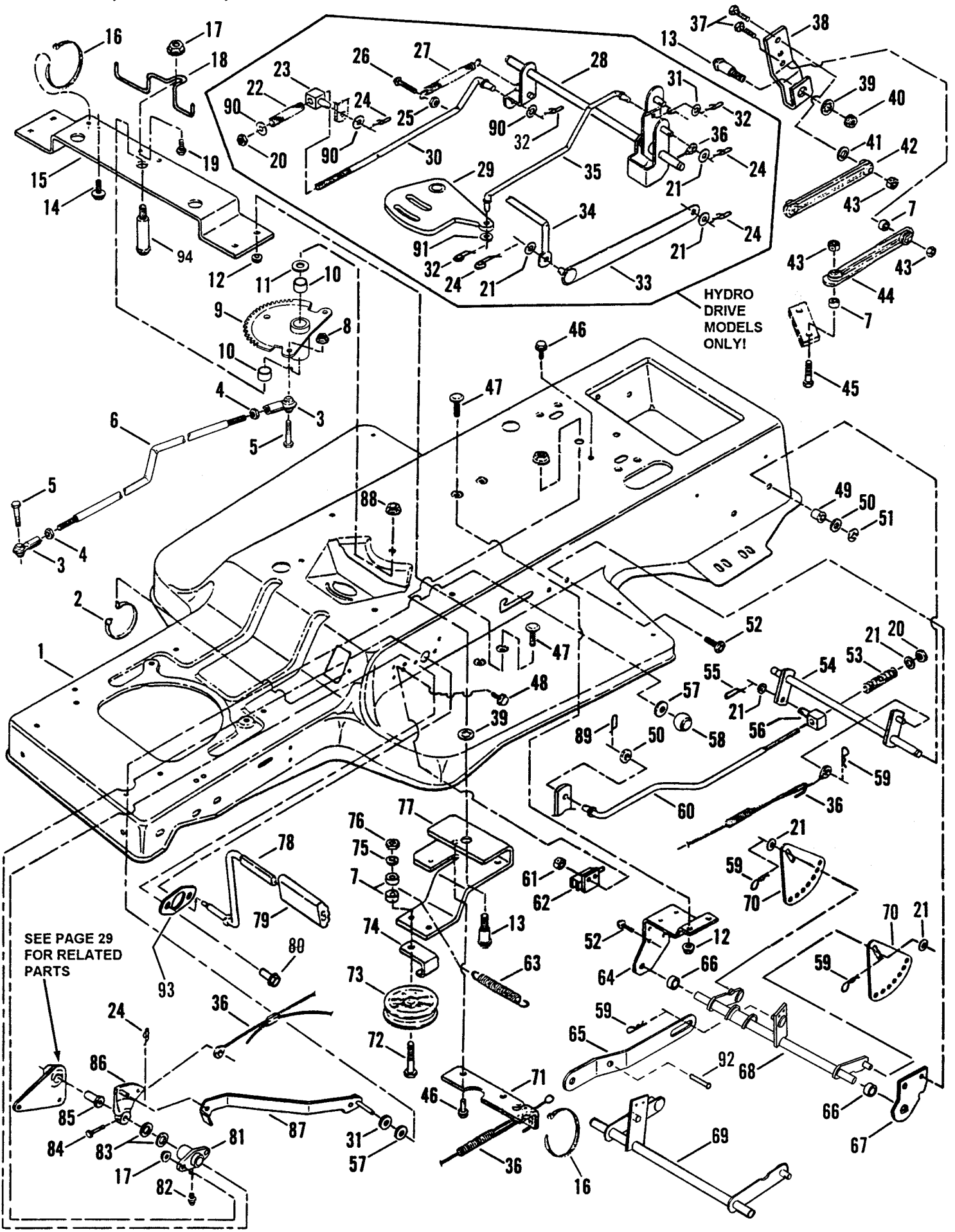
TRANSMISSION GROUP (Gear Drive) & REAR WHEELS



TRANSMISSION GROUP (Gear Drive) & REAR WHEELS

ITEM	PART NO.	DESCRIPTION
1	2-8760	TRANSAXLE, Gear Drive, Peerless Model 930, 5-Speed (Models LT120G30DB, ELT125G33DB, NLT120G30DB & LT125G38DB)
2	1-2763	RING, Retaining
3	1-0211	KEY, Woodruff, 3/16 x 3/4", No. 9
4	9-1601	NUT, 5/16-18 Hex Flange Lock, Grade 5 (4)
5	9-0361	SCREW, 5/16-18 x 5/8" Hex Washer Head, Self-Tapping (3)
6	3-3951	BRACKET, Torque
7	2-9641	BELT, Traction Drive (Gear Drive Only!)
8	2-4831	PULLEY, Drive
9	3-4439	BRACKET, Axle/Spool
10	9-1165	BOLT, 1/4-28 x 5/8" Hex Head, Grade 8
11	9-0746	WASHER, 1/4" Bellville (2)
12	3-3754	ARM, Shift Link Lever
13	2-2437	SPRING, Brake Return
14	1-7173	KEY, Square, 3/16 x 3/16 x 2 1/2" (2)
15	9-0702	BOLT, 5/16-18 x 2-1/4" Hex Flange Lock (4)
16	3-1036	WASHER, Flat 3/4" I.D. x 1-5/8" O.D.
17	2-4857	SPACER (2)
18	5-2845	ASSEMBLY, Rear Tire & Rim (All Models Except LT125G38DB) (Includes items 19, 20 & 21)
19	2-6112	TIRE, 18 x 7.50
20	2-4453	RIM, 8 x 5.375
21	1-2234	VALVE, Air (Snap-in)
22	2-9618	WASHER, Hub-Cap Retaining
23	2-9617	WASHER, Flat, .3/4" I.D. x 1-5/16" O.D. (2)
24	1-2705	RING, Retaining
25	1-1022	HUB-CAP

FRAME, CLUTCH, BRAKE & STEERING COMPONENTS

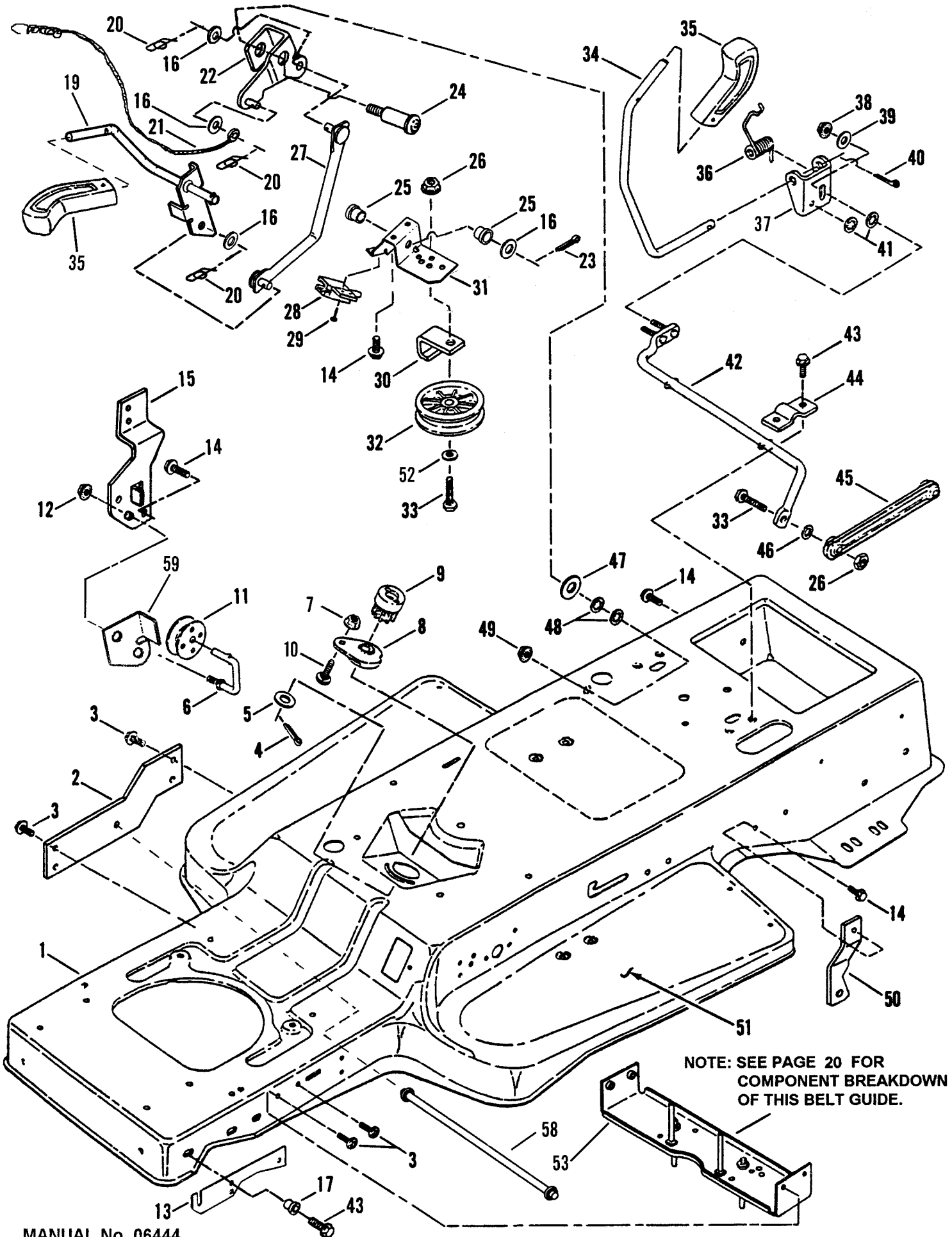


SEE PAGE 29
FOR RELATED
PARTS

FRAME, CLUTCH, BRAKE & STEERING COMPONENTS

ITEM	PART NO.	DESCRIPTION	ITEM	PART NO.	DESCRIPTION
1	3-3301	FRAME, Tractor	52	9-1001	SCREW, 5/16-18 x 5/8" Truss Hd.(5)
2	1-4451	TIE, Wire	53	2-4381	SPRING, Brake
3	2-7936	ROD END (2)	54	4-1347	PIVOT, Brake
4	9-0482	NUT, 3/8-24 Hex Jam (2)	55	2-4874	PIN, 1/2 " Cotter, Self-Locking
5	9-0163	SCREW, 3/8-24 x 1-1/4" Hex Head Cap, Grade 5 (2)	56	2-4586	SWIVEL, Brake Link
6	2-8420	LINK, Drag	57	2-3649	WASHER, 5/16 Nylon (2)
7	2-4180	SPACER (5)	58	2-8362	KNOB, Push/Pull
8	9-0613	NUT, 3/8-16 Hex Flange Lock	59	1-5067	PIN, 3/32 x 1 1/2" Hair (4)
9	5-3568	ASSEMBLY, Sector Gear (Includes item 10)	60	2-4430	ROD, Brake
10	1-2706	BEARING, Sector Gear (2)	61	9-0376	NUT, #10-32 Hex Nyloc (2)
11	3-1036	WASHER, 3/4 Thrust	62	2-3355	SWITCH
12	9-0583	NUT, 1/4-20 Hex Fl. Lock, Gr. 5 (6)	63	2-4383	SPRING
13	2-2381	BOLT, 1/2-13 x 2" Shoulder (3)	64	3-3521	BRACKET, Rear Lift/PTO Lever
14	9-0913	SCREW, #10-24 x 1/2" S.T. (Torx)	65	3-4850	LINK, Lift (Models: LT125G38DB, LT145H38DBV & NLT145H38DBV)
15	3-3627	BRACE, Sector Gear	--	3-4347	LINK, Lift (Models: LT140H33DBV, ELT125G33DB, & ELT140H33DB)
16	1-2080	TIE, Cable (2)	--	3-4386	LINK, Lift (Models: LT120G30DB & NLT120G30DB)
17	9-0585	NUT, 5/16-18 Hex Fl. Lock, Gr. 5 (3)	66	3-4384	SPACER (2)
18	2-8314	GUIDE, Drive Belt	67	3-3520	BRACKET, Deck Hang Pivot
19	9-0595	BOLT, 5/16-18 x 3/4" Hex Flange Lock, Grade 5	68	4-2597	ARM, Rear Lift (All 38" Decks)
20	9-1299	NUT, 3/8-16 Hex Nyloc	69	4-1249	ARM, Rear Lift (All Other Models)
21	9-0122	WASHER, 3/8 Flat (7)	70	3-4377	PLATE, Lift Sector (2)
22	2-8091	SPRING, Brake	71	3-3595	EXTENSION, Idler Arm
23	2-8037	SWIVEL, Inline Brake	72	9-1560	SCREW, 3/8-16 x 2-1/4" Hex Head Cap, Grade 5
24	9-1593	PIN, 3/8" Cotter Self-Lock	73	2-3954	PULLEY
25	9-0184	NUT, 5/16-18 Hex Ctr. Lock, Grade 5	74	3-3556	GUIDE, Pulley
26	9-1151	SCREW, 5/16-18 x 1-1/4" Self-Tap.	75	9-1320	WASHER, 3/8 Split Lock
27	1-2264	SPRING	76	9-1302	NUT, 3/8-16 Hex, Grade 5
28	4-1589	ARM, Brake	77	3-3557	ARM, Idler (Traction Drive)
29	4-1612	ARM, Transmission Speed Control	78	2-2743	PEDAL, Park Brake
30	2-8034	ROD, Brake	79	1-2661	PAD, Pedal
31	9-0188	WASHER, 5/16 Flat	80	9-1000	SCREW, 5/16-18 x 7/8" Truss Head (Torx) (2)
32	3-4162	PIN, 5/16 Cotter, Self-Locking (3)	81	5-2431	ASSEMBLY, Foot Shaft Pivot (Includes item 82)
33	4-1590	LINK, Shift	82	1-4871	FITTING, Lube
34	5-2920	ASSEMBLY, Shift Lever (Lower)	83	1-5992	WASHER, 5/8 Flat (2)
35	3-4159	LINK, Speed	84	2-3645	PIN, 3/16 x 1-1/2" Clevis
36	2-4115	ASSEMBLY, Clutch/Brake Cable	85	2-2742	BEARING, Flange
37	9-0143	SCREW, 3/8-16 x 1-1/4", Gr. 5 (2)	86	4-1236	ASSEMBLY, Clutch Brake Arm
38	3-3555	BELLCRANK, Shift Lever	87	4-1244	LATCH, Park Brake
39	9-0509	WASHER, 1/2 Internal Tooth Lk. (2)	88	9-0975	NUT, 1/2-13 Hex Center Lock, Gr. 5
40	9-0619	NUT, 1/2-13 Hex Fl. Lock Gr. 5 (2)	89	9-1594	PIN, 1/2 Cotter, Self-Locking
41	9-0118	WASHER, 3/8 Split Lock (2)	90	9-1514	WASHER, 3/8 Flat
42	2-4286	LINK, Shift Lever	91	9-1296	WASHER, 11/32 I.D. x .7/8" O.D., Grade 5
43	9-1585	NUT, 3/8-16 Hex Ctr. Lock, Gr. 5(3)	92	1-3862	PIN, 1/4" x 1-1/2" Roll
44	2-5041	LINK, Shift Lever (Twisted)	93	4-6778	WASHER, Pivot- Stiffener
45	9-1497	SCREW, 3/8-16 x 1-1/2", Gr. 5	94	2-4604	BOLT, Shoulder 1/2-13x3 7/8"
46	9-0361	SCREW, 5/16-18 x 5/8" Self-Tap (3)			
47	9-0803	BOLT, 1/4-20 x 5/8" Carriage (6)			
48	9-1240	SCREW, #10-32 x 5/8", Grade 5 (2)			
49	1-1016	BEARING, Nylon (2)			
50	9-1587	WASHER, 1/2 Flat			
51	1-4341	RING, 1/2" External Retaining (2)			

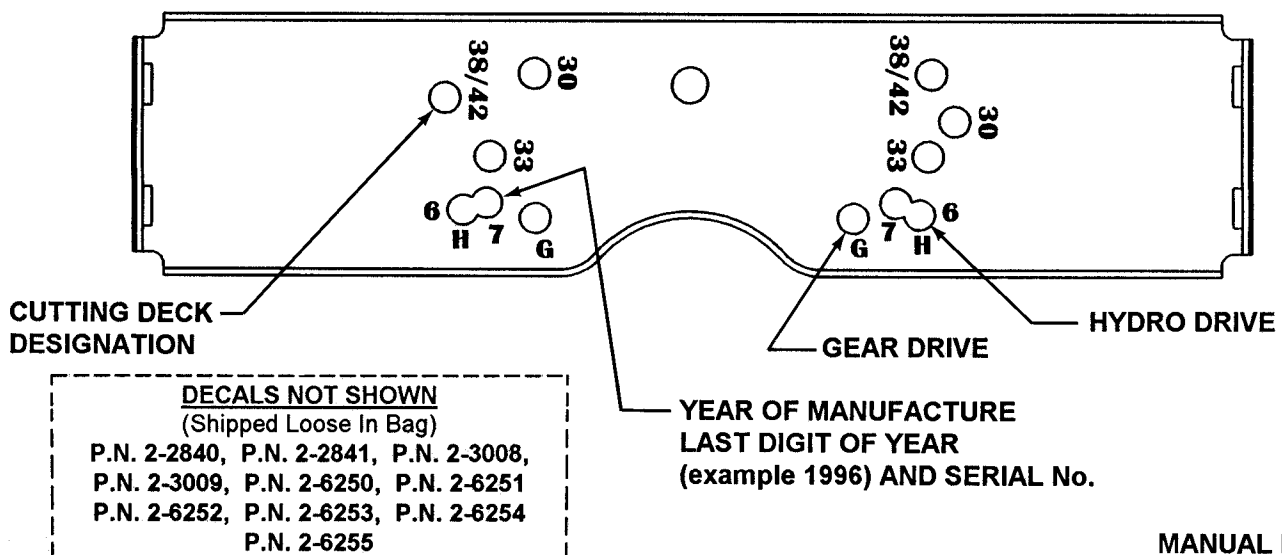
BLADE ENGAGEMENT & TRANSMISSION CONTROLS



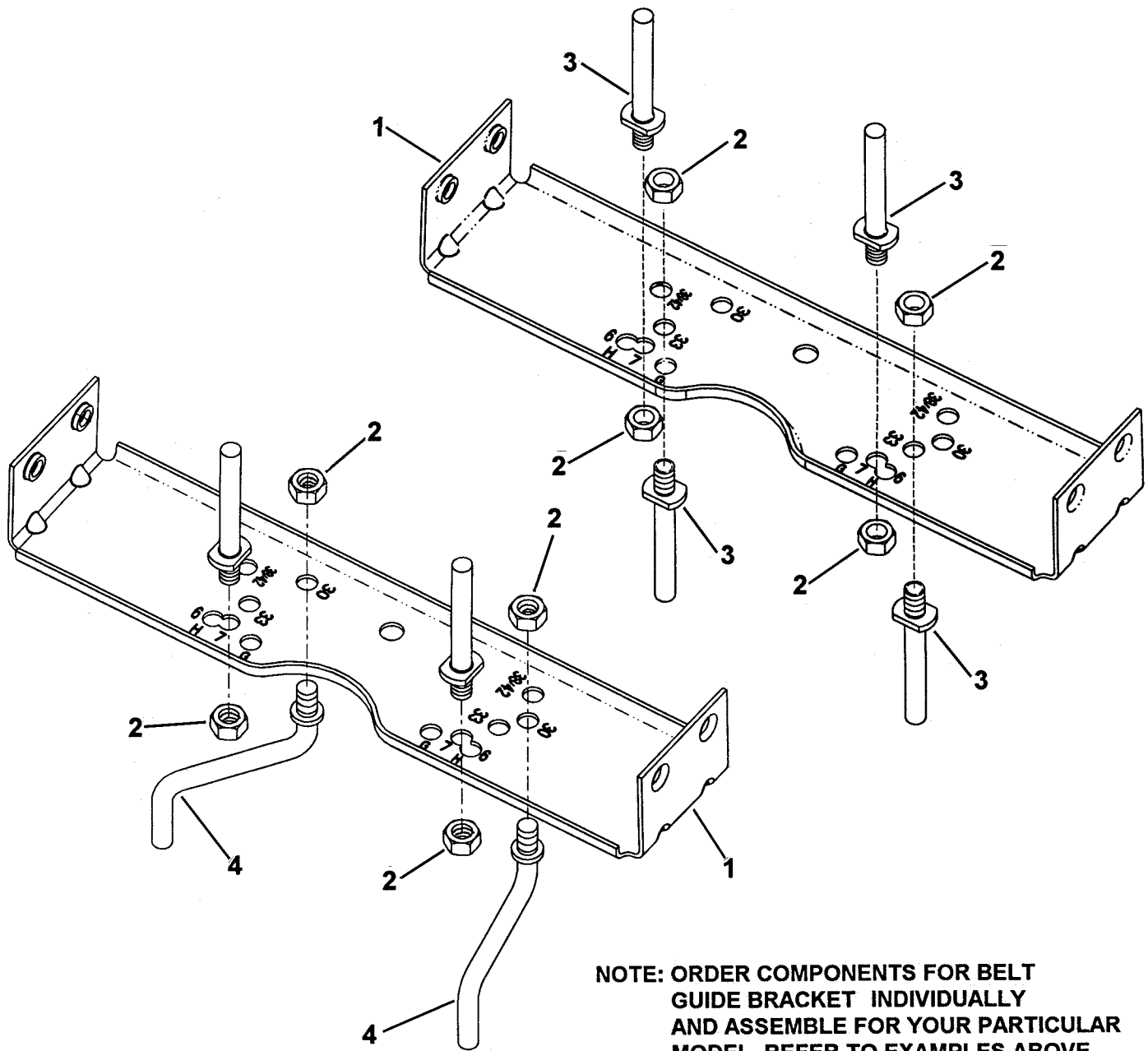
BLADE ENGAGEMENT & TRANSMISSION CONTROLS

ITEM	PART NO.	DESCRIPTION	ITEM	PART NO.	DESCRIPTION
1	3-3301	FRAME, Tractor	31	3-5524	SUPPORT, PTO Lever
2	3-3832	BRACE, Frame (2)	32	2-4344	PULLEY
3	9-1001	SCREW, 5/16-18 x 5/8" Truss Head (Torx) (13)	33	9-1497	SCREW, 3/8-16 x 1-1/2" Hex Head Cap, Grade 5
4	9-1598	PIN, 1/8 x 3/4" Cotter	34	2-3957	LEVER, Shift
5	1-4296	WASHER, 1/2 Shim (2)	35	2-3656	KNOB, Deck Lift Lever (2)
6	2-9600	ROD, Spool Pivot	36	2-4069	SPRING, Shift Lever
7	9-1603	NUT, 1/4-20 Hex Flange Lock, Grade 5	37	3-3541	BRACKET, Shift Lever (Upper)
8	5-2562	ASSEMBLY, Steering Adjuster	38	7-6978	NUT, 1/4-20 Hex Nyloc
9	2-2368	GEAR, Steering Pinion	39	90055	WASHER, 1/4 I.D. Flat
10	9-1573	BOLT, 1/4-20 x 5/8" Short Neck Carriage, Grade 5	40	9-0364	PIN, 5/32 x 1" Cotter
11	2-3182	SPOOL	41	9-1023	WASHER, 1/4 Internal Tooth Lock(2)
12	9-0585	NUT, 5/16-18 Hex Flange Lock, Grade 5	42	5-2920	ASSEMBLY, Shift Lever (Lower)
13	3-3488	BRACKET, Hood Pivot	43	9-1151	SCREW, 5/16-18 x 1-1/4" Self-Tapping(4)
14	9-1524	SCREW, 5/16-18 x 1-1/4" Self-Tapping (4)	44	3-3554	CLIP (2)
15	3-4439	BRACKET, Axle/Spool	45	2-4286	LINK, Shift Lever
16	9-0500	WASHER, 7/16" I.D. Flat (3)	46	2-4180	SPACER
17	2-4616	BUSHING, Flange (2)	47	3-1036	WASHER, Thrust
18	3-5528	STUD, Belt Guide (2) (for Models LT145H38DBV & NLT145H38DBV)	48	9-0509	WASHER, 1/2" Internal Tooth Lock (2)
19	4-1619	LEVER, PTO	49	9-0619	NUT, 1/2-13 Hex Flange Lock, Grade 5
20	2-4159	PIN, 3/8" Self Locking Cotter (3)	50	3-3951	BRACKET, Torque (Gear Drive Models Only!)
21	2-8366	CABLE, Blade (Gear Drive, 30" & 33" Models)	51	2-4455	PAD, Foot Sandpaper (Gear Drive Models)
--	2-9152	CABLE, Blade (Hydro Drive, 33 Models)	--	2-8203	PAD, Foot, Rubber Deluxe (Hydro Drive Models)
--	3-5551	CABLE, Blade (LT145H38DBV & NLT145H38DBV)	52	9-1514	WASHER, 3/8 Flat
--	4-2817	CABLE, Blade (Model LT125G38DB)	53	3-5963	BRACKET, Belt Guide
22	4-1238	BELLCRANK, PTO	54	9-1575	NUT, 5/16-18 Hex Center Lock, Grade B or 5 (4)
23	9-0037	PIN, 3/32 x 3/4" Cotter	55	2-8303	STUD, Belt Guide (2 or4)
24	2-4518	BOLT, 1/2-13 x 2-11/32" Shoulder	56	3-5528	STUD, Belt Guide 38" Deck (2)
25	3-5527	BUSHING 920	57	4-2598	LEVER, PTO
26	9-1585	NUT, 3/8-16 Hex Center. Lock, Gr. 5	58	2-8934	GUIDE, Belt
27	4-1237	ROD, PTO Link	59	3-4399	GUIDE, Cable
28	2-3355	SWITCH			
29	9-0913	SCREW, #10-24 x 1/2" Self-Tap (2)			
30	3-3556	GUIDE, Belt			

TOP VIEW OF BELT GUIDE BRACKET, Part No. 3-5963
(Cutting Deck, Drive and Year of Manufacture Designations Imprinted in Bracket as shown)



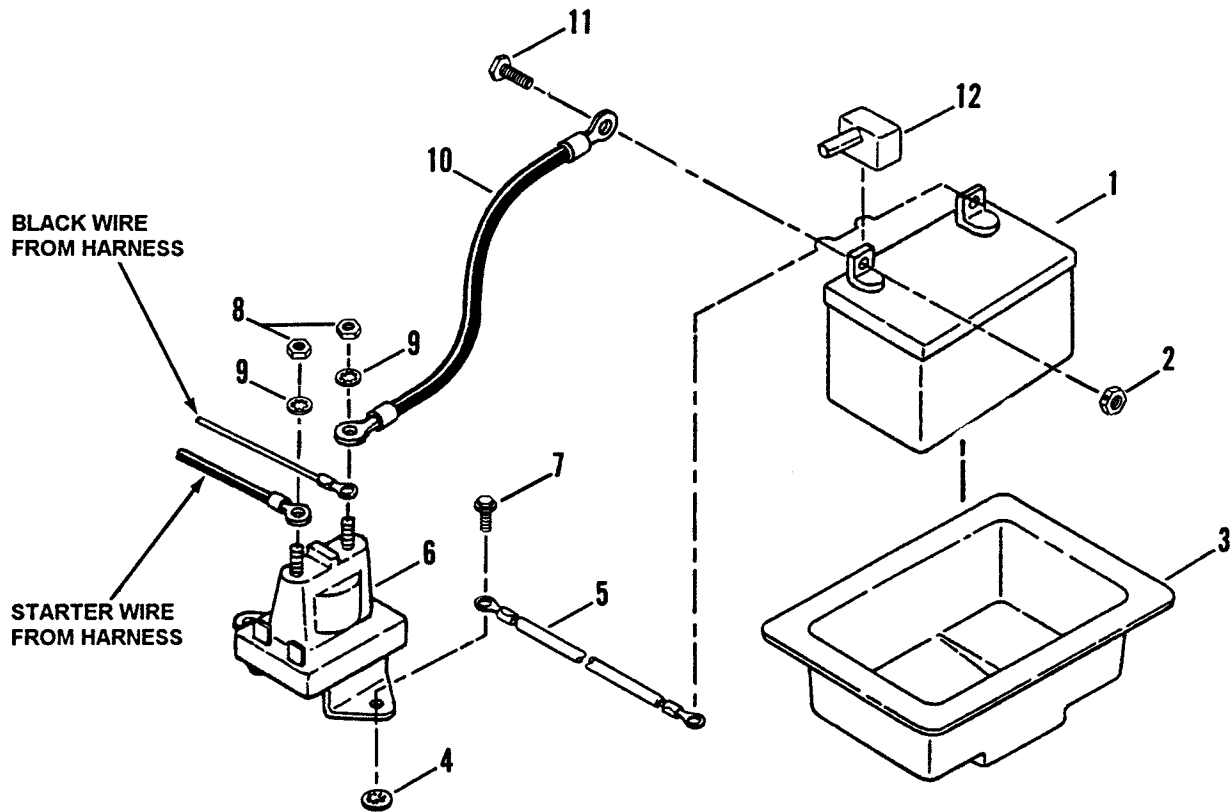
BELT GUIDE ASSEMBLY



NOTE: ORDER COMPONENTS FOR BELT GUIDE BRACKET INDIVIDUALLY AND ASSEMBLE FOR YOUR PARTICULAR MODEL. REFER TO EXAMPLES ABOVE, ON PAGE 19 AND THE BELT GUIDE ASSEMBLY ON YOUR TRACTOR.

ITEM	PART NO.	DESCRIPTION
1	3-5963	BRACKET, Belt Guide
2	9-1575	NUT, 5/16-18 Hex Center Lock, Grade B or 5 (4)
3	2-8303	STUD, Belt Guide (2 or 4)
4	3-5528	STUD, Belt Guide 38" Dual Brake Deck (2)

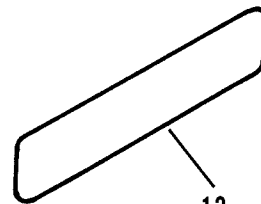
ELECTRICAL COMPONENTS



CAUTION

IF BATTERY IS REMOVED, DO NOT OPERATE ENGINE WITHOUT INSULATING POS+ BATTERY CABLE TERMINAL WITH ELECTRICAL TAPE, OR SPARKING FROM BATTERY CABLES CAN RESULT.

PART No. 1-6134
(see item 1 below)

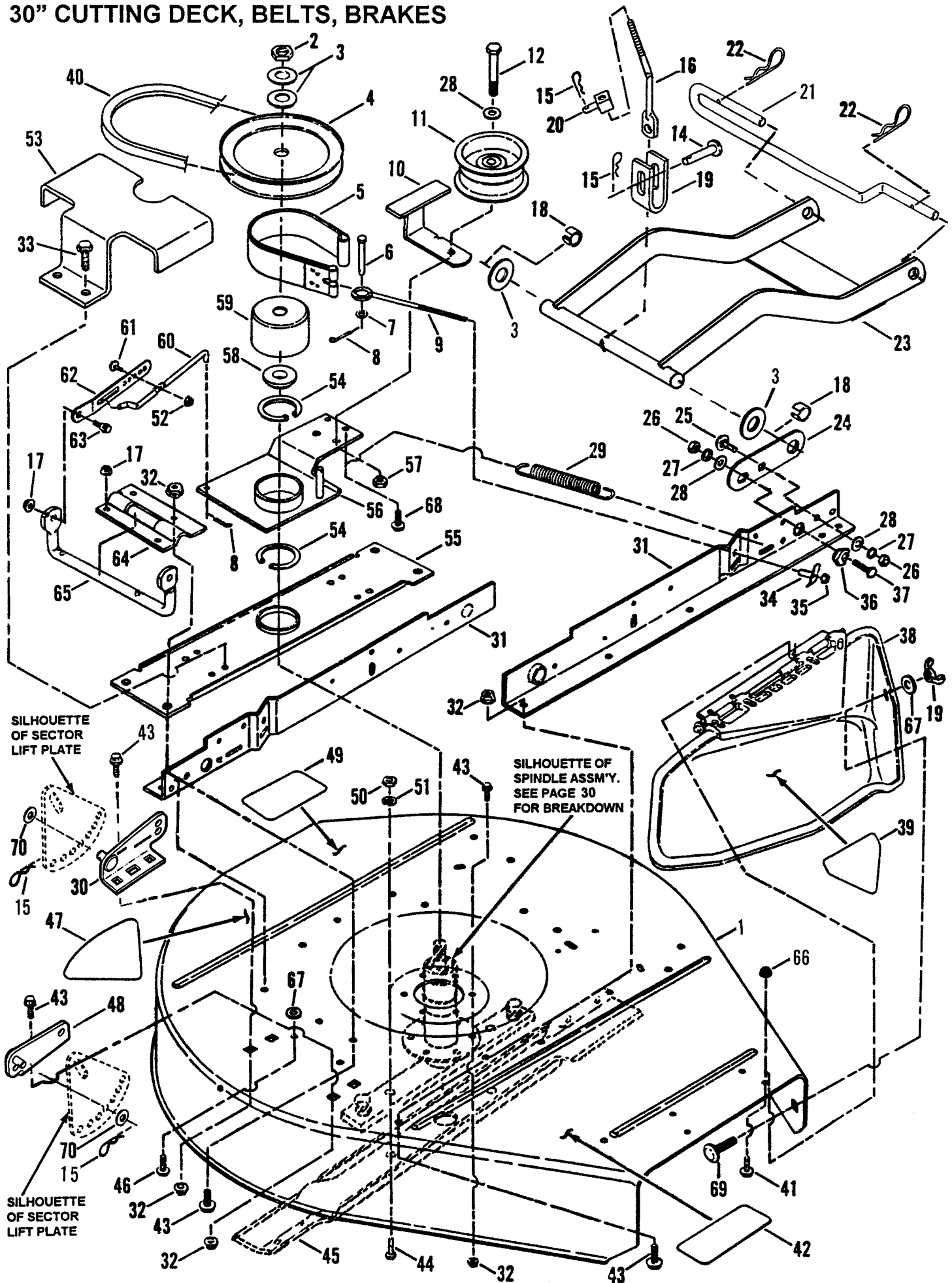


13
LOCATED ON FRAME,
NEAR BATTERY OPENING
(for further identification of
Decal, refer to decal page)

ITEM PART NO. DESCRIPTION

ITEM	PART NO.	DESCRIPTION
1	6-0618	KIT, Battery (Includes Caution Tag, Part No. 1-6134 & Battery Without Acid)
2	9-0372	NUT, 1/4-20 Hex Center Lock, Grade B or 5 (2)
3	1-7853	TRAY, Battery
4	1-2485	RETAINER, 1/4" Bolt
5	2-6414	CABLE, Ground (Black)
6	7-5622	SOLENOID (Was 18604)
7	9-0539	SCREW, 1/4-20 x 1/2" Self-Tapping (2)
8	9-0977	NUT, 1/4-20 Hex Jam (2)
9	9-1314	WASHER, 1/4 Internal Tooth Lock (2)
10	1-4476	CABLE, Positive (Red)
11	2-7172	SCREW, 1/4-20 x 5/8" Hex Head Cap, Grade 5 (2)
12	1-2444	COVER, Positive Terminal
13	2-6415	DECAL, Caution, Battery Installation

30" CUTTING DECK, BELTS, BRAKES



30" CUTTING DECK, BELTS, BRAKES

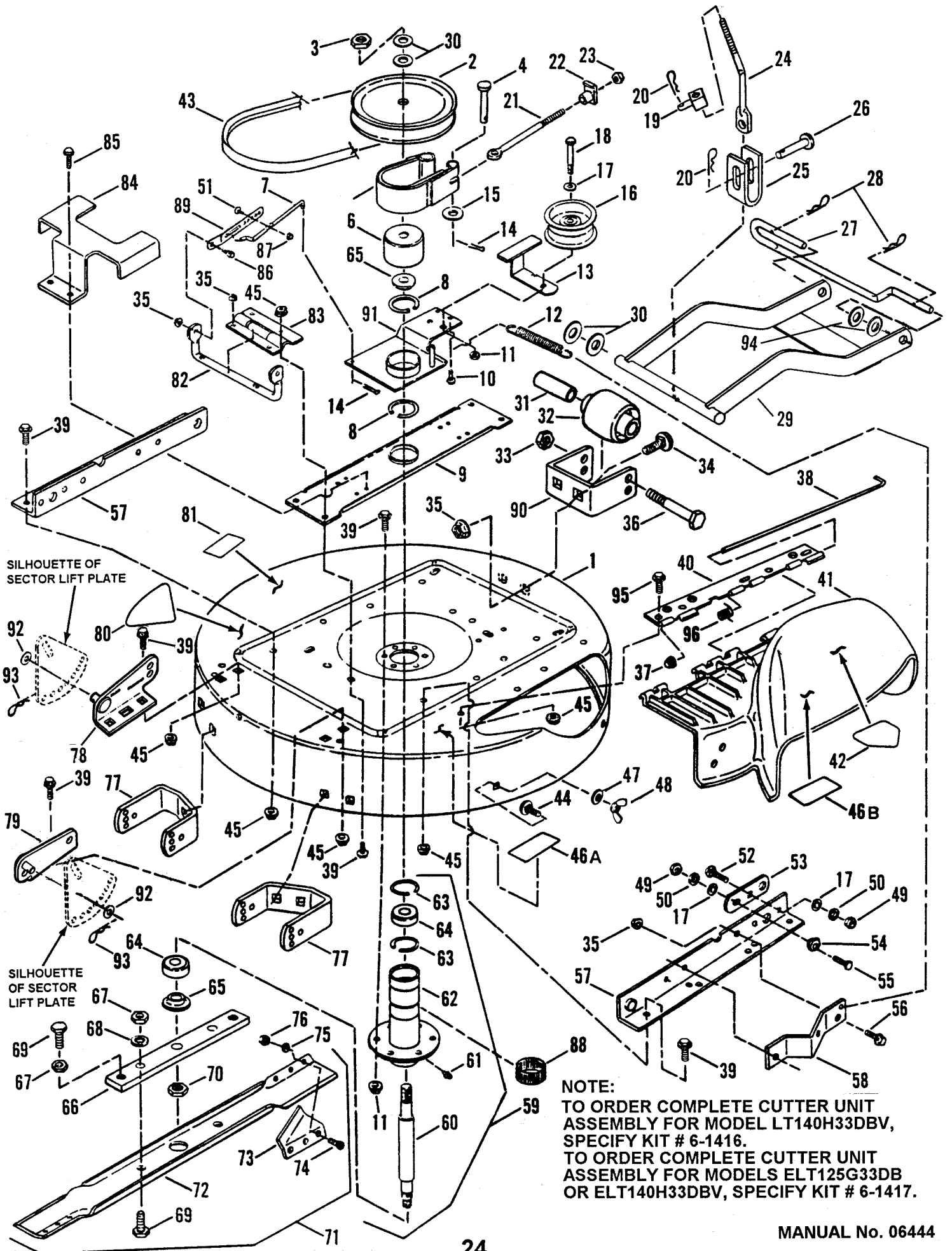
ITEM	PART NO.	DESCRIPTION
1	5-3689	DECK, 30" Cutting (Includes items 42 & 49)
2	1-0027	NUT, 3/4-16 Hex Jam
3	3-2027	WASHER, 3/4" I.D. x 1-1/2" O.D. Flat (4)
4	2-2715	PULLEY, Spindle, 6 1/2" O.D.
5	5-2886	ASSEMBLY, Brake Band
6	1-4304	PIN, 1/4 x 1-1/4" Clevis
7	9-0055	WASHER, 1/4" I.D. x 5/8" O.D. Flat
8	9-0037	COTTER-PIN, 3/32 x 3/4" (2)
9	2-2879	BOLT, 1/4-20 Eye
10	4-1487	GUIDE, Belt
11	2-7717	PULLEY, Idler, 3 1/4" O.D.
12	9-1553	SCREW, 3/8-16 x 1-3/4" Hex. Head Cap, Grade 5
13	3-3938	BRACKET, Front Lift Hanger
14	1-3460	PIN, 3/8 x 1-1/2" Clevis
15	9-1503	HAIRPIN for 3/8" Dia. (4)
16	2-6639	ROD, Front Lift
17	9-0585	NUT, 5/16-18 Hex Flange Lock, Grade 5 (2)
18	1-2067	RING, Front Lift Arm (2)
19	9-0492	NUT, 5/16-18 Wing
20	2-9694	SWIVEL, Brake
21	2-7471	PIN, Front Deck Hanger
22	9-1596	HAIRPIN, for 5/8" Dia. (2)
23	4-1613	LIFT, Front Arm
24	3-2432	LINK, Adjustment
25	9-0850	BOLT, 3/8-16 x 3/4" Carriage, Gr. 5
26	9-0130	NUT, 3/8-16 Hex, Grade 5 (2)
27	9-0118	WASHER, 3/8 Split Lock (2)
28	9-0122	WASHER, Flat, 3/8 SAE (3)
29	1-2264	SPRING, Clutch & Brake
30	4-2608	BRACKET, Rear Deck Lift Left Side
31	3-3499	RAIL, 30" Cutting Deck (2)
32	9-0613	NUT, 3/8-16 Hex Flange Lock (17)
33	9-0361	SCREW, 5/16-18 x 5/8" S.T. (2)
34	1-4303	T-NUT, 1/4-20 Thread
35	9-0063	NUT, 1/4-20 Hex, Grade 5
36	1-5012	ECCENTRIC, Leveling
37	9-0563	SCREW, 3/8-16 x 1" Hex Head Cap, Grade 5

ITEM	PART NO.	DESCRIPTION
38	5-2553	ASSEMBLY, Deflector (Includes item 39)
39	1-3010	DECAL - DANGER (Cut Finger)
40	2-2786	BELT, Drive, 30" Cutting Deck
41	9-1525	BOLT, 5/16-18 x 1/2" Hex Flange Lock, Grade 5 (2)
42	1-4852	DECAL - CAUTION
43	9-0612	BOLT, 3/8-16 x 3/4" Hex Flange Lock, Grade 5 (17)
44	9-0392	SCREW, 1/2-20 x 1" Hex Head Cap, Grade 5 (2)
45	1-8069	BLADE, 30" Cutting Deck
46	9-0595	BOLT, 5/16-18 x 3/4" Hex Flange Lock, Grade 5 (2)
47	2-3997	DECAL, 30"
48	4-2578	BRACKET, Rear Deck Lift, Right Side
49	1-6973	DECAL - CAUTION, Rotating Blades
50	9-0559	NUT, 1/2-20 Hex Jam (2)
51	9-0509	WASHER, 1/2 Internal Tooth Lock (2)
52	9-0583	NUT, 1/4-20 Hex Flange Lock Gr. 5 (2)
53	3-3918	GUIDE, Belt
54	1-0740	RING, Retaining (2)
55	3-8018	BRACE, Spindle
56	4-1311	ARM, Idler
57	9-1585	NUT, 3/8-16 Hex Center Lock, Gr. 5
58	1-4407	WASHER, Spindle
59	3-2169	DRUM, Brake
60	2-4192	ROD, Link, Clutch/Brake
61	9-0584	BOLT, 1/4-20 x 1/2" Hex Flange Lock, Grade 5
62	3-3586	BRACKET, Link, Clutch/Brake
63	1-5761	SCREW, 5/16-18 x 3/4" Shoulder
64	3-3578	BRACKET, Pivot Arm
65	2-4183	ARM, Pivot
66	9-1601	NUT, 5/16-18 Hex Flange Lock, Grade 5
67	9-0188	WASHER, 5/16 Flat (3)
68	9-0368	SCREW, 5/16-18 x 3/4" Self-Tapping
69	9-1508	BOLT, 5/16-18 x 3/4" Short Neck Carriage, Grade 5
70	9-1514	WASHER, 13/32" I.D. x 13/16" O.D. (2)

NOTE: 30" CUTTING DECK USED ON MODELS LT120G30DB AND NLT120G30DB ONLY! FOR ORDERING COMPLETE CUTTER UNIT ASSEMBLY, ORDER KIT No. 6-1415.

AIR LIFT KIT P.N. 6-0735 AVAILABLE FOR 30" CUTTING DECK INCLUDES:
 (2 ea.) P.N. 3-1724 AIR LIFTS
 (6 ea.) P.N. 9-0228 SCREWS
 (6 ea.) P.N. 9-0391 WASHERS
 (6 ea.) P.N. 9-0223 NUTS
 (NOT SHOWN)

33" CUTTING DECK, BELTS, BRAKES



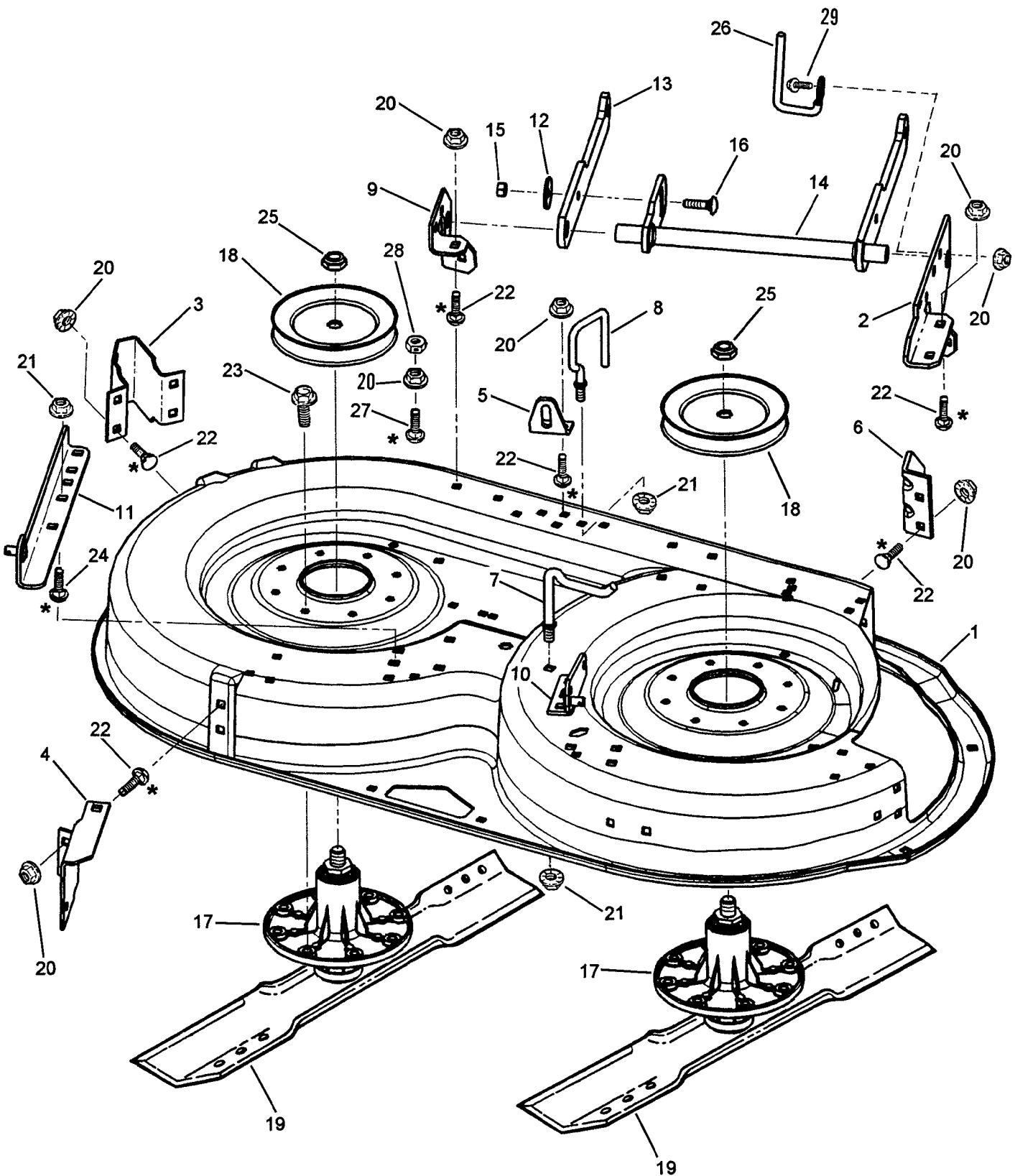
33" CUTTING DECK, BELTS, BRAKES

ITEM	PART NO.	DESCRIPTION
1A	5-3690*	ASSEMBLY, Deck 33" Cutting (Includes items 46A & 81)
1B	5-3693**	ASSEMBLY Deck, 33" Cutting (Includes items 46B & 81)
2	2-6558	PULLEY, Spindle, 7" O.D.
3	1-0027	NUT, 3/4-16 Hex Jam
4	1-4304	PIN, 1/4 x 1-1/4" Clevis
5	5-2886	ASSEMBLY, Brake Band
6	3-2169	DRUM, Brake
7	2-4192	ROD, Link, Clutch/Brake
8	1-0740	RING, Retaining (2)
9	3-8018	BRACE, Spindle
10	9-0368	SCREW, 5/16-18 x 3/4" Self-Tapping
11	9-1585	NUT, 3/8-16 Hex Center Lock, Gr. 5
12	1-2264	SPRING, Clutch & Brake
13	4-1487	GUIDE, Belt
14	9-0037	COTTER-PIN, 3/32 x 3/4" (2)
15	9-0055	WASHER, 1/4" I.D. x 5/8" O.D. Flat
16	2-7717	PULLEY, Idler, 4" O.D.
17	9-0122	WASHER, 3/8 SAE Flat (3)
18	9-1553	SCREW, 3/8-16 x 1-3/4" Hx. Hd. Cap
19	2-9694	SWIVEL, Brake
20	1-2431	PIN, 1/4 x 1-1/8" Hair (2)
21	2-6677	BOLT, 1/4-20 Eye
22	1-4303	NUT, 1/4-20 Tee
23	9-0063	NUT, 1/4-20 Hex, Grade 5
24	2-6639	ROD, Front Lift
25	3-3938	BRACKET, Front Lift Hanger
26	1-3460	PIN, 3/8 x 1-1/2" Clevis
27	2-7471	PIN, Front Deck Hanger
28	9-1596	HAIRPIN, for 5/8" Dia. (2)
29	4-1613	LIFT, Front Arm
30	3-2028	WASHER, 3/4" I.D. Flat (4)
31	1-5272	SPACER (3)
32	1-9190	WHEEL, Gage (3)
33	9-1600	NUT, 3/8-24 Hex Ctr. Lock, Gr. 5 (3)
34	9-0004	BOLT, 5/16-18 x 1/2" Short Neck Carriage, Grade 5 (6)
35	9-0585	NUT, 5/16-18 Hex Fl. Lock, Gr. 5 (9)
36	9-1532	SCREW, 3/8-24 x 3-3/4" Hex Head Cap, Grade 5 (3)
--	5-2555	ASSEMBLY, Deflector (Includes items 37, 38, 40, 41, 42, & 96)
37	2-6483	PALNUT, 1/4 Hex
38	2-6234	PIN, Hinge
39	9-0612	BOLT, 3/8-16 x 3/4" Hex Flange Lock, Grade 5 (15)
40	3-3780	HINGE, Deflector
41	2-6233	DEFLECTOR, Discharge
42	2-6831	DECAL, Danger (Cut Finger)
43	2-6546	BELT, Drive, 33" Cutting Deck
44	9-1508	BOLT, 5/16-18 x 3/4" S. N. C., Gr. 5
45	9-0613	NUT, 3/8-16 Hex Flange Lock (18)
46A	1-4852*	DECAL - CAUTION, Deflector
46B	2-2841**	DECAL - CAUTION, Deflector
47	9-1296	WASHER, 5/16 Flat (2)
48	9-0492*	NUT, 5/16-18 Wing
--	9-1511**	NUT, 5/16-18 Hex, Grade 5

ITEM	PART NO.	DESCRIPTION
49	9-0130	NUT, 3/8-16 Hex, Grade 5 (2)
50	9-0118	WASHER, 3/8 Split Lock (2)
51	9-0584	BOLT, 1/4-20 x 1/2" Hex Fl. Lk., Gr. 5
52	9-0850	BOLT, 3/8-16 x 3/4" Carriage, Gr. 5
53	3-2432	LINK, Adjustment
54	1-5012	ECCENTRIC, Leveling
55	9-0563	SCREW, 3/8-16 X 1" H. H. Cap, Gr. 5
56	9-0721	BOLT, 5/16-18 x 1/2" Hex Flange Lock, Grade 5 (4)
57	3-8453	RAIL, Side (2)
58	3-3952	ANCHOR, Brake
59	5-2917	ASSEMBLY, Spindle (Includes items 60 thru 70)
60	2-4687	SPINDLE (7.54" Long)
61	1-0817	FITTING, Lube
62	5-2294	HOUSING, Spindle (Incl. item 61)
63	1-2491	RING, Retaining (2)
64	1-3313	BEARING, Spindle (2)
65	1-4407	WASHER, Spindle (2)
66	3-7751	HOLDER, Blade
67	9-1939	NUT, 1/2-20 Hex Jam (4) (2 in assembly)
68	9-0509	WASHER, 1/2 Int. Tooth Lock (2)
69	9-0491	SCREW, 1/2-20 x 1-1/4" Hex Head Cap, Grade 5 (4) (2 in assembly)
70	9-0356	NUT, 5/8-18 Hex Lock, Gr. B or 5
71	5-7482	ASSEMBLY, Blade & Air Lift (Includes items 72 thru 76)
72	1-9523	BLADE, 33" Cutting Deck Euro
73	3-7723*	AIR-LIFT (2)
--	3-4468**	AIR-LIFT (2)
74	9-0228	SCREW, 5/16-24 x 11/16" Machine (6)
75	9-0391	WASHER, 5/16 Int. Tooth Lock (6)
76	9-0223	NUT, 5/16-24 Hex, Grade 5 (6)
77	3-3571	BRACKET, Gage Wheel (Rear) (2)
78	4-2608	BRACKET, Rear Deck Lift, Left Side
79	4-2578	BRACKET, Rear Deck Lift, Right Side
80	2-2991	DECAL, 33" Hi-Vac
81	1-6973	DECAL - CAUTION (Rotating Blades)
82	2-4183	ARM, Pivot
83	3-3578	BRACKET, Pivot Arm
84	3-3926	GUIDE, Belt
85	9-0361	SCREW, 5/16-18 x 5/8" Self-Tap. (2)
86	1-5761	SCREW, 5/16-18 x 3/4" Shoulder
87	9-0583	NUT, 1/4-20 Hex Flange Lock, Gr. 5
88	1-2670	RING, Tolerance
89	3-3586	BRACKET, Link, Clutch/Brake
90	3-3570	BRACKET, Gage Wheel (Front)
91	4-1311	ARM, Idler
92	9-1514	WASHER, 13/32" I.D. Flat (2)
93	9-1503	HAIRPIN, for 3/8" Dia. (2)
94	9-1587	WASHER, 1/2" I.D. Flat (2)
95	9-1588	BOLT, 3/8-16 x 3/4" Hex Flange Lock, Grade 5 (3)
96	1-6341	SPRING, Hinge
97	3-4168	BLADE, 33" Cutting Deck (not shown)

*for 33" Domestic **for 33" European

38" CUTTING DECK SUB-ASSEMBLY

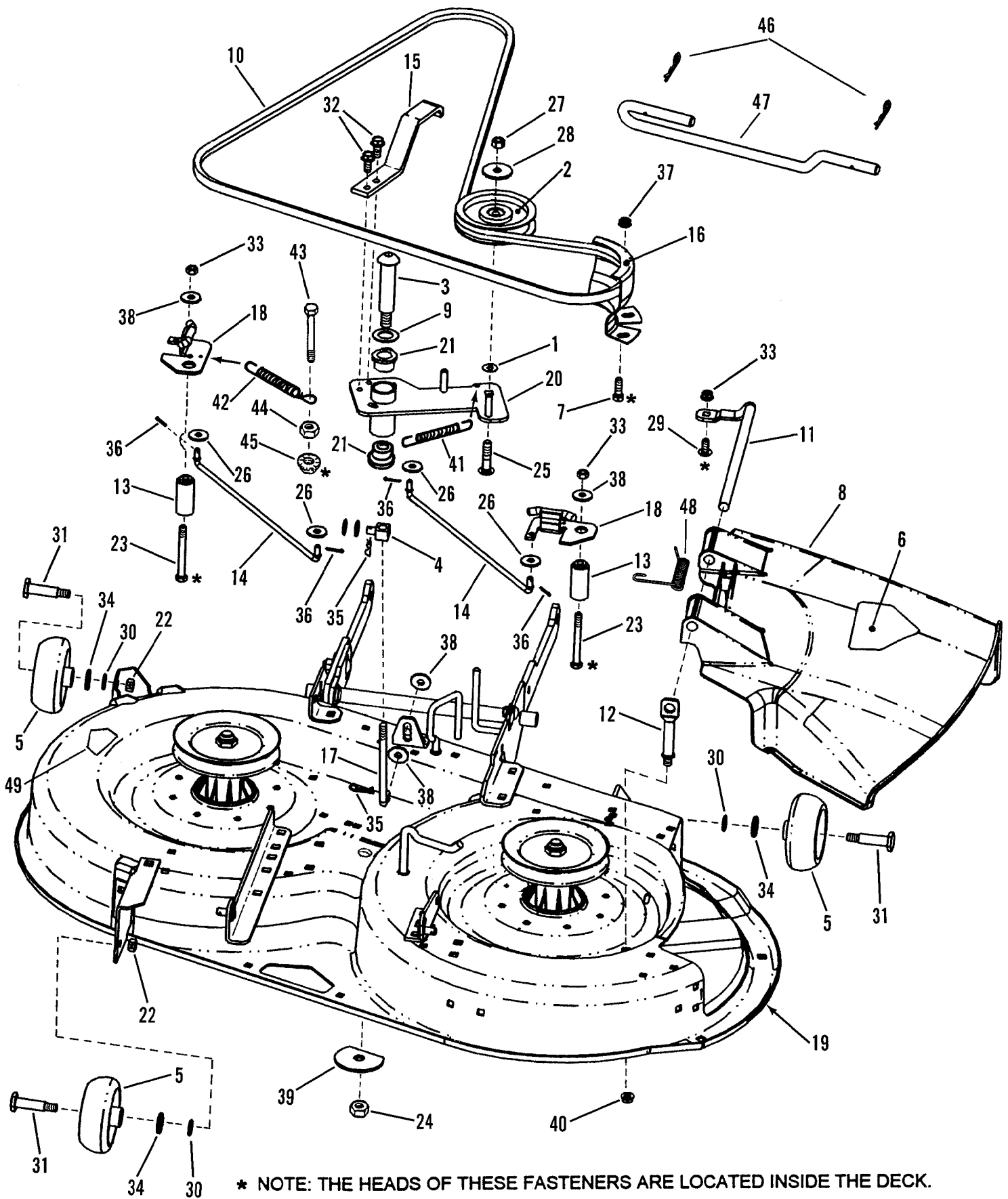


* NOTE: THE HEADS OF THESE FASTENERS ARE LOCATED INSIDE THE DECK.

38" CUTTING DECK SUB-ASSEMBLY

ITEM	PART NO.	DESCRIPTION
1	6-1960	DECK, 38" CUTTING
2	2-8365	BRACKET, Front Linkage (2)
3	3-3756	BRACKET, LH Front Gage Wheel
4	3-3891	BRACKET, LH Rear Wheel
5	3-4875	ANGLE, Front
6	3-5494	BRACKET, RH Front Gage Wheel
7	3-5505	CRADLE, Spring
8	3-5506	GUIDE, Belt Dual Spindle Brake
9	3-5577	BRACKET, Front Lift Arm- LS
10	4-2578	BRACKET, Sector Lift RH Rear
11	4-2606	BRACKET, Sector Lift LH Rear
12	1-2063	WASHER, Cone
13	3-5603	FRONT LIFT ARM, 38 Deck
14	4-2602	STRUCTURE, Front Lift Arm
15	9-0184	NUT, 5/16-18 Hex Center Lock
16	9-1169	BOLT, 5/16-18 x 1-1/8" Short Square Neck Carriage, Grade 5 (2)
17	5-4513	ASSEMBLY, 38 Spindle (2)
18	2-7792	PULLEY, Spindle (2)
19	4-2998	BLADE, 38 Cutting Deck
20	9-0585	NUT, 5/16-18 Flange Lock, Grade 5 (19)
21	9-0613	NUT, 3/8-16 Hex Flange Lock (6)
22	9-0799	BOLT, 5/16-18 x 5/8" Short Square Neck Carriage, Grade 5 (14)
23	9-0815	BOLT, 3/8-16 x 3/4" Hex Washer Self Tap (6)
24	9-0850	BOLT, 3/8-16 x 3/4" Short Square Neck Carriage, Grade 5 (4)
25	9-1006	NUT, 5/8-18 Nyloc (2)
26	3-6563	GUIDE, Belt Side Rail
27	9-1169	BOLT, 5/16-18 x 1-1/8", Square Neck Carriage, Grade 5
28	9-1575	NUT, 5/16-18 Hex Center lock, Grade 5
29	9-0368	SCREW, 5/16-18 x 3/4" Hex Washer Self-tapping

38" CUTTING DECK, BELTS, BRAKES



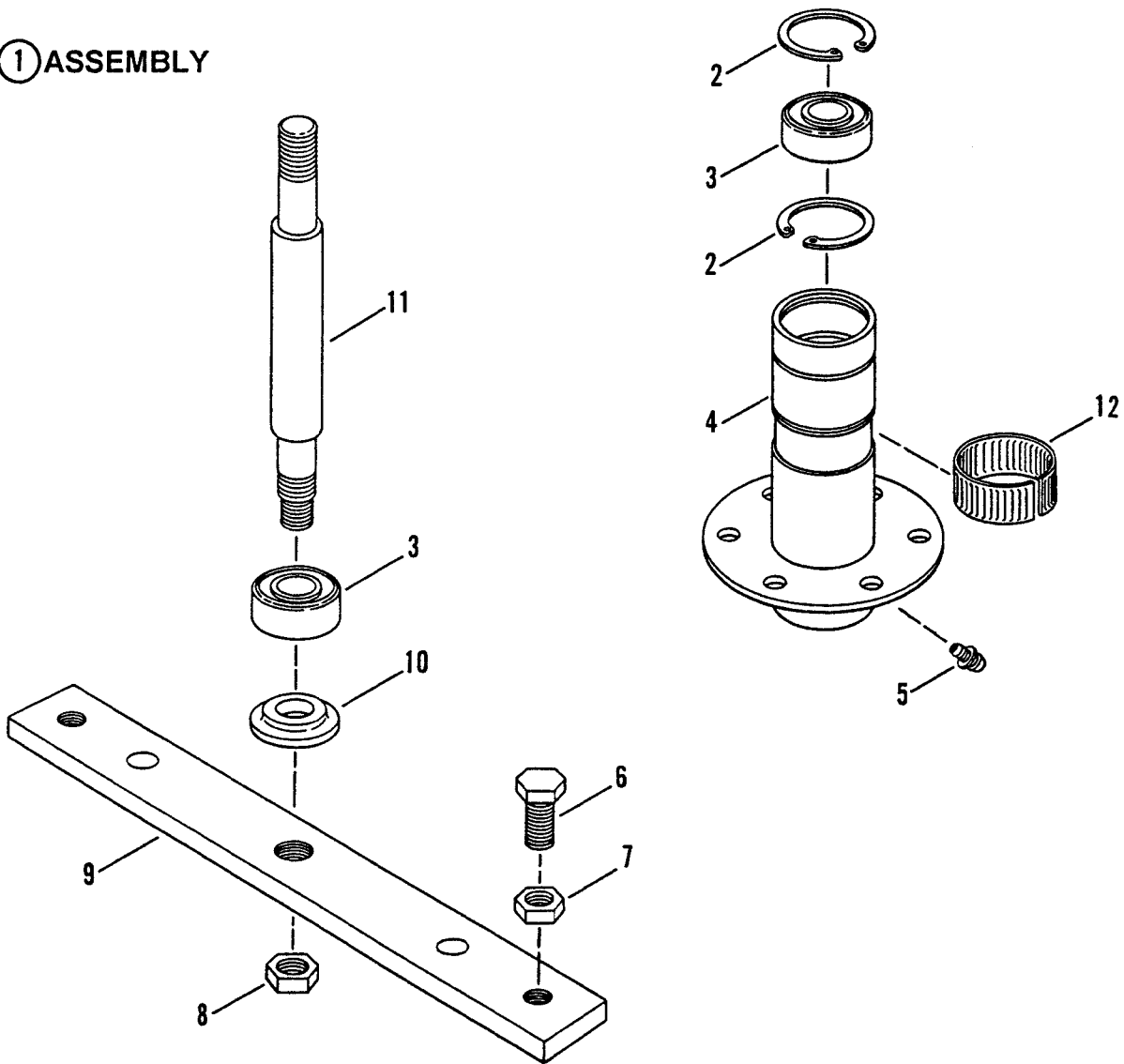
38" CUTTING DECK, BELTS, BRAKES

ITEM	PART NO.	DESCRIPTION
1	1-3847	RETAINER, 3/8" Bolt
2	1-8574	IDLER, 4-1/8" Flat
3	2-4604	BOLT, 3/4" Dia. X 3.01 Shoulder; 1/2-13 Thread
4	2-4607	SWIVEL, Brake Link
5	2-6122	WHEEL, Gage 38" Deck (3)
6	2-6831	DECAL, CPSC Cut Finger
7	2-7168	SCREW, 5/16-18 x 1" Hex Head Cap, Grade 5 (3)
8	2-9425	CHUTE, Discharge 38" Deck
9	2-9617	WASHER, 3/4" I.D. Flat
10	3-5500	BELT, 38" Deck Dual Spindle Brake
11	3-5502	ROD, Pivot, Side Discharge
12	3-5503	ROD, Mounting, Side Discharge
13	3-5507	PIVOT, Dual Brake (2)
14	3-5510	BRAKE LINK, Dual Spindle Brake (2)
15	3-5518	LEVER, Engagement
16	3-5529	GUARD, Belt, 38" Dual Spindle Brake
17	3-6586	J-BOLT, 3/8-16 x 6-1/4"
18	4-2595	ARM, Brake (2)
19	5-4096	ASSEMBLY, 38" Dual Brake Deck
20	4-2596	ARM, Idler, Dual Brake
21	3-5496	BEARING, 3/4" I.D. (2)
22	9-0289	NUT, 3/8-24 Hex Center Lock, Grade 5 (3)
23	9-0553	SCREW, 5/16-18 x 3" Hex Head Cap, Gr. 5 (2)
24	9-0975	NUT, 1/2-13 Hex Center Lock
25	9-1158	BOLT, 3/8-16 x 1-3/4" Short Neck Carriage, Gr. 5
26	9-1294	WASHER, 1/4" I.D. Flat (4)
27	9-1302	NUT, 3/8-16 Hex, Grade 5
28	9-1331	WASHER, 13/32" I.D. Flat
29	9-1508	BOLT, 5/16-18 x 3/4" Short Neck Carriage, Gr. 5
30	9-1514	WASHER, 13/32" I.D. Flat Lock (3)
31	9-1526	BOLT, 5/8" Dia. Shoulder, 3/8-24 Thread (3)
32	9-1541	SCREW, 5/16-18 x 3/4" Self-Tapping (2)
33	9-1575	NUT, 5/16-18 Hex Center Lock, Grade 5 (3)
34	9-1587	WASHER, 1/2" I.D. Flat (3)
35	9-1310	PIN, #13 Hair (2)
36	9-1597	PIN, 3/32 x 3/4" Cotter (4)
37	9-1601	NUT, 5/16-18 Hex, Grade 5 (4)
38	9-1675	WASHER, 11/32" I.D. Flat (4)
39	9-1775	WASHER, 1/2" I.D. x 2-1/2" O.D. Special "D"
40	9-0613	NUT, 3/8-16 Hex Flange Lock
41	1-2264	SPRING
42	2-9025	SPRING, Extension
43	9-0971	SCREW, 1/4-20 x 2-3/4" Hex Head Cap, Grade 5
44	9-0063	NUT, 1/4-20 Hex, Grade 5
45	9-0477	NUT, 1/4-20 Hex Flange Lock, Grade 5
46	9-1596	HAIRPIN
47	2-7471	PIN, Deck Hanger
48	3-5813	SPRING, Side Discharge
49	2-6154	DECK, 38 Inch

NOTE: FOR ORDERING COMPLETE CUTTER UNIT
ASSEMBLY FOR MODEL LT125G38DB, LT145H38DBV
& NLT145H38DBV ORDER KIT No. 6-1951.

SPINDLE - 30" and 33" CUTTING DECK

① ASSEMBLY

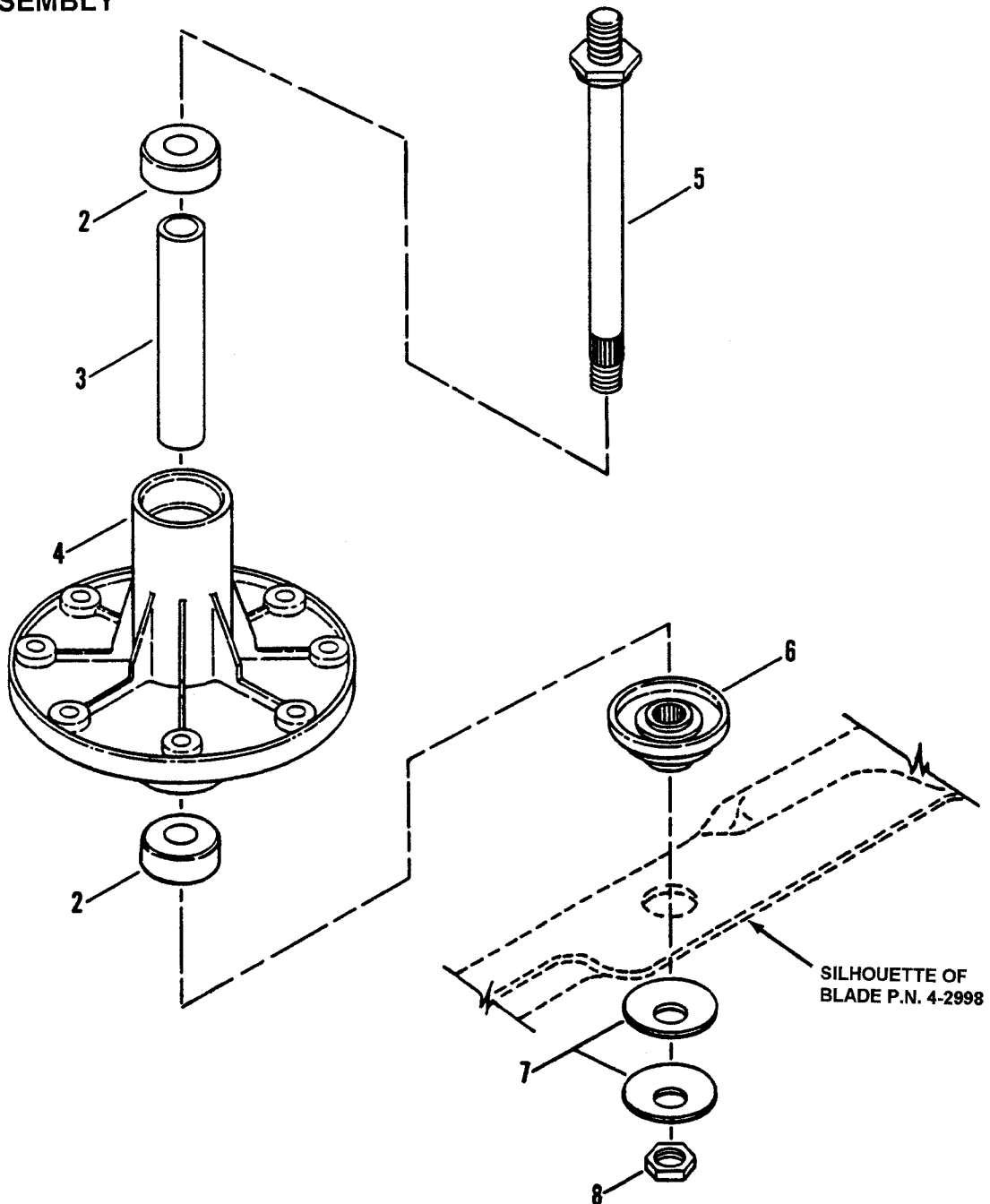


ITEM PART NO. DESCRIPTION

ITEM	PART NO.	DESCRIPTION
1	5-2917	ASSEMBLY, Spindle Housing, 30" Cutting Deck (All Models except LT125G38DB) (Includes items 2 thru 11)
2	1-2491	RING, Retaining (2)
3	1-3313	BEARING, Spindle (2)
4	5-2294	HOUSING, Spindle (Includes item 5)
5	1-0817	FITTING, Lube
6	9-0491	SCREW, 1/2-20 x 1-1/4" Hex Head Cap, Grade 5 (2)
7	9-1939	NUT, 1/2-20 Hex Jam (2)
8	9-0356	NUT, 5/8-18 Hex Center Lock Jam
9	3-7751	HOLDER, Blade
10	1-4407	WASHER, Spindle
11	2-4687	SPINDLE (7.54" Long)
12	1-2670	RING, Tolerance

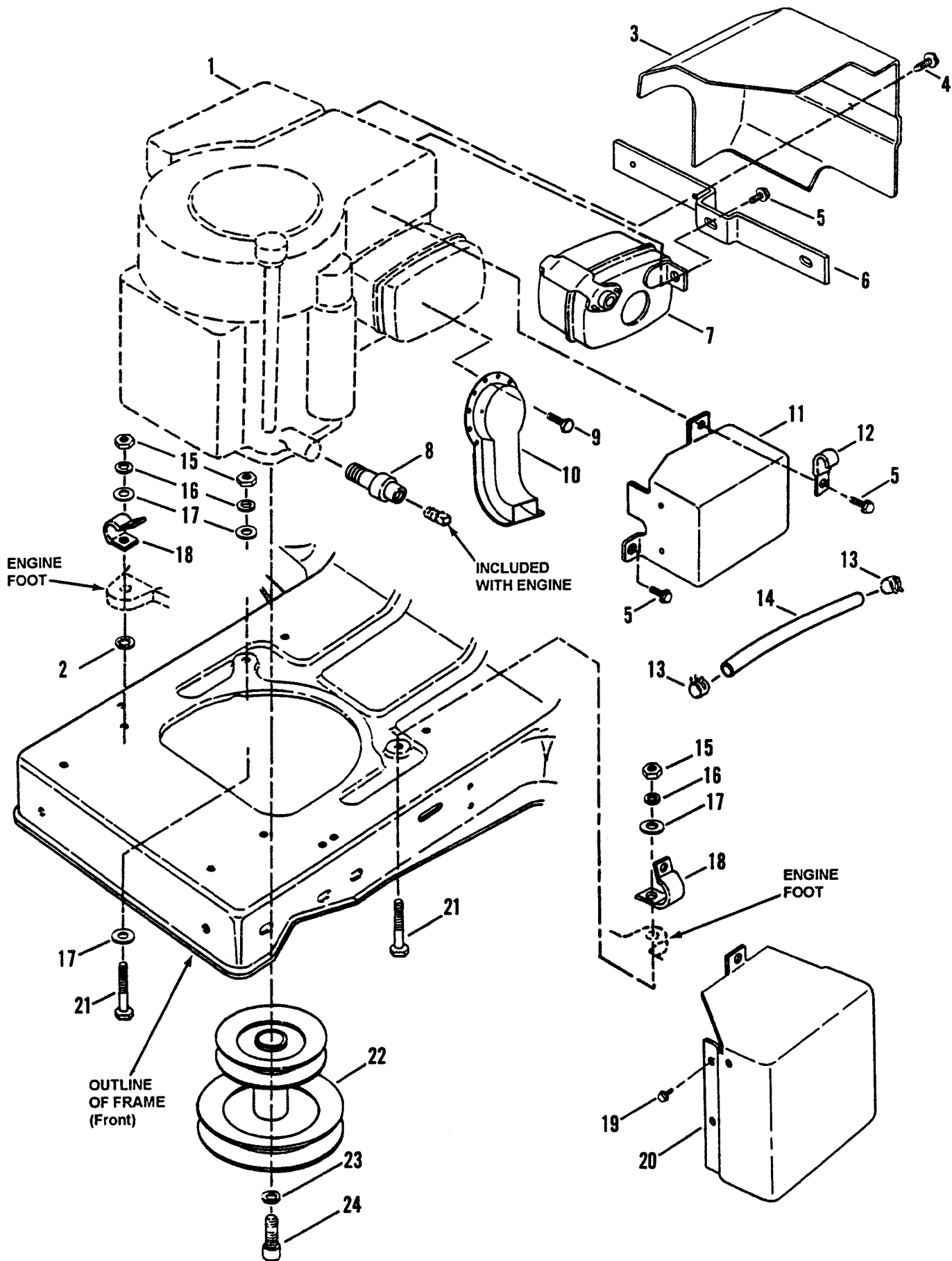
SPINDLE - 38" CUTTING DECK

① ASSEMBLY



ITEM	PART NO.	DESCRIPTION
1	5-2847	ASSEMBLY, Spindle Housing, 38" Cutting Deck (Models LT125G38DB, LT145H38DBV & NLT145H38DBV) (Includes items 2 thru 8)
2	2-6808	BEARING, Spindle (2)
3	2-4465	SPACER, Spindle Housing
4	2-4461	HOUSING, Spindle
5	2-6754	SPINDLE (7.019" Long)
6	2-4463	SPACER, Blade
7	2-4467	WASHER, Belleville, 19/32" I.D. x 1-3/4" O.D. (2)
8	9-1633	NUT, 9/16-18 Hex Jam

ENGINE COMPONENTS



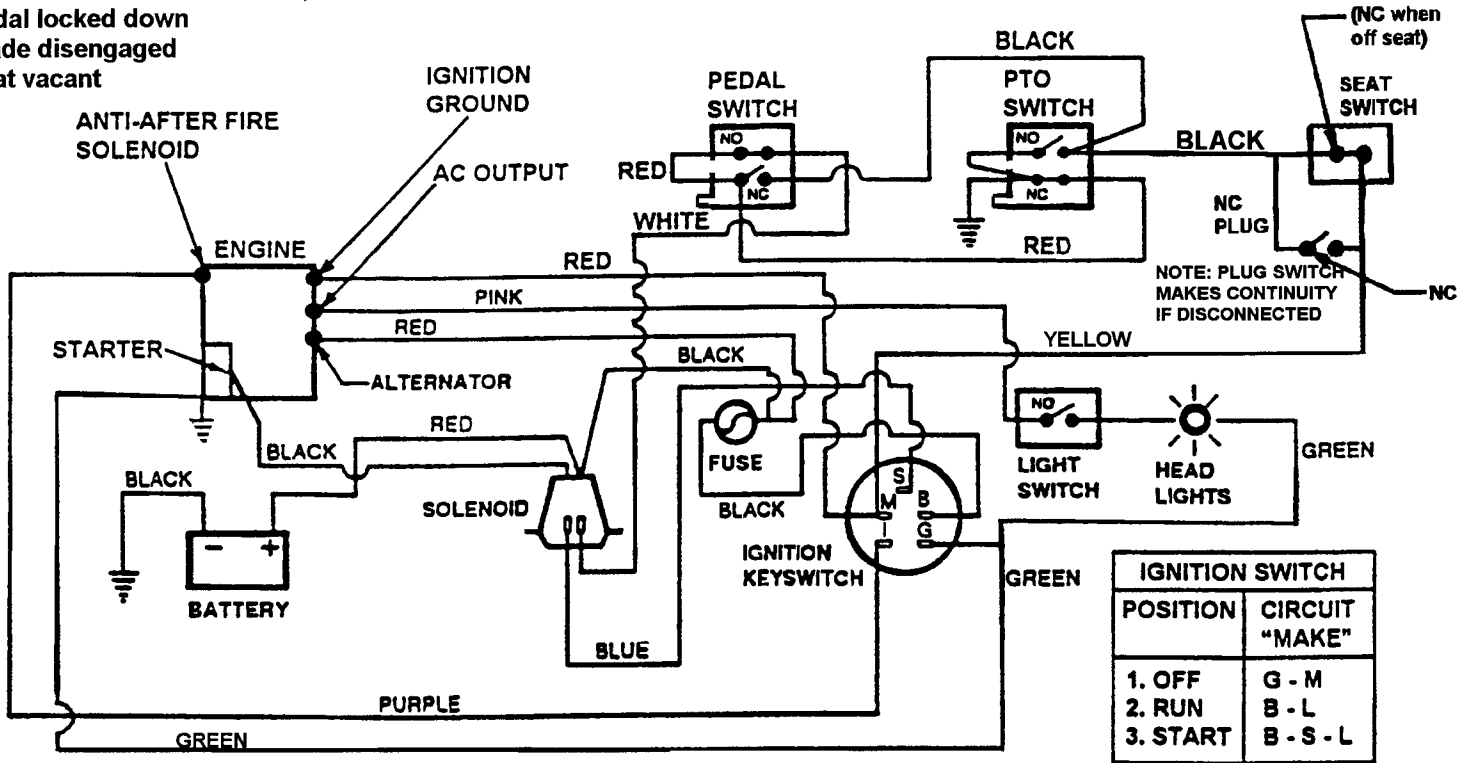
ENGINE COMPONENTS

ITEM	PART NO.	DESCRIPTION
1	**	ENGINE, B. & S. 12HP, Model 283707, Type 0134 (Model: LT120G30DB) Trim 01
--	**	ENGINE, B. & S. 12HP, Model 283707, Type 0634 (Model NLT120G30DB) Trim A1
--	**	ENGINE, B. & S. 12.5HP, Model 289707, Type 0120 (Model ELT125G33DB) Trim 01
--	**	ENGINE, B. & S. 12.5HP, Model 82456, Type 0171 (Model: LT125G38DB) Trim 01
--	**	ENGINE, B. & S. 14HP, Model 287707, Type 0228 (Model: LT140H33DBV) Trim 01 (1997)
--	**	ENGINE, B. & S. 14HP, Model 287707, Type 0229 (Model ELT140H33DBV) Trim 01 (1997)
--	**	ENGINE, B & S 14.5HP, Model 287707, Type 0249 (Model LT145H38DBV) Trim 01 (1997)
--	**	same as above with addition of CARB Certification Type 0648 (Model NLT145H38DBV) Trim 01
--	**	ENGINE, B & S 14.5HP, Model 287707, Type 1228 (Model LT140H33DBV) Trim E1 (1998)
--	**	ENGINE, B & S 14.5HP, Model 287707, Type 1249 (Model LT145H38DBV) Trim E1 (1998)
--	**	ENGINE, B & S 14HP, Model 287707, Type 1229 (Model ELT140H33DBV) Trim E1 (1998)
2	9-0391	WASHER, 5/16 Internal Tooth Lock
3	1-7022	HEAT SHIELD (Models: LT125G38DB & NLT120G30DB Only!)
4	9-0307	SCREW, #10-24 x 1/2" Hex Washer Head, Self-Tapping (2)
5	9-1579	BOLT, 1/4-20 x 1/2" Hex Flange Lock, Grade 5 (3)
6	3-8374	BRACKET, Heat Shield (Gear Drive Models Only!)
7	5-2691	MUFFLER, Exhaust (Gear Drive Models Only!)
8	2-2486	EXTENSION, Oil Drain (Shown) (Gear Drive Models Only!)
--	2-7972	ASSEMBLY, Oil Valve (Not Shown) (Hydro Drive Models Only!)
9	9-1581	SCREW, #8-18 x 1/2" Hex Head, Self-Tapping (3)
10	4-1537	EXTENSION, Muffler (All Hydro Models & Gear Drive Model ELT125G33DB)
11	4-1269	HEAT SHIELD, Muffler (Shown) (Hydro Models Only!)
--	4-1680	HEAT SHIELD, Muffler (Not Shown) (Model: ELT125G33DB Only!)
12	2-6482	CLIP, "J" Type (Hydro Models Only!)
13	1-2222	CLAMP, Fuel Line (2)
14	2-9982	LINE, Fuel, 14" Long (Models: LT140H33DBV, LT140H33DBV, LT145H38DBV & NLT145H38DBV)
--	3-2015	LINE, 7" Long (Models: LT120G30DB, ELT125G33DB & NLT120G30DB & LT125G38DB)
15	9-1511	NUT, 5/16-18 Hex, Grade 5 (4)
16	9-1315	WASHER, 5/16 Split Lock (4)
17	9-1296	WASHER, 5/16 Flat (5)
18	1-5861	CLIP, Wiring Harness (2)
19	9-1075	SCREW, #10-24 x 5/8" Hex Washer Head, Self-Tapping (4)
20	4-1677	HEAT SHIELD, Muffler (Shown) (Model:LT140H33DBV)
--	4-1679	HEAT SHIELD, Muffler (Not Shown) (Model: ELT125G33DB)
21	9-0669	SCREW, 5/16-18 x 1-3/4" Hex Head Cap, Grade 5 (2)
22	2-7767	ASSEMBLY, Engine Pulley (Models: LT120G30DB, ELT125G33DB, NLT120G30DB & LT125G38DB)
--	2-8028	ASSEMBLY, Engine Pulley (Models: LT140H33DBV & LT140H33DBV)
--	4-2818	ASSEMBLY, Engine Pulley (Model LT125G38DB)
--	3-6577	ASSEMBLY, Engine Pulley (Models LT145H38DBV & NLT145H38DBV)
23	9-1301	WASHER, 7/16 Split Lock
24	9-1531	SCREW, 7/16-20 x 1" Socket Head Cap

**PURCHASE ENGINE & ENGINE PARTS,
OTHER THAN THOSE LISTED, FROM
ENGINE SERVICE OUTLETS.

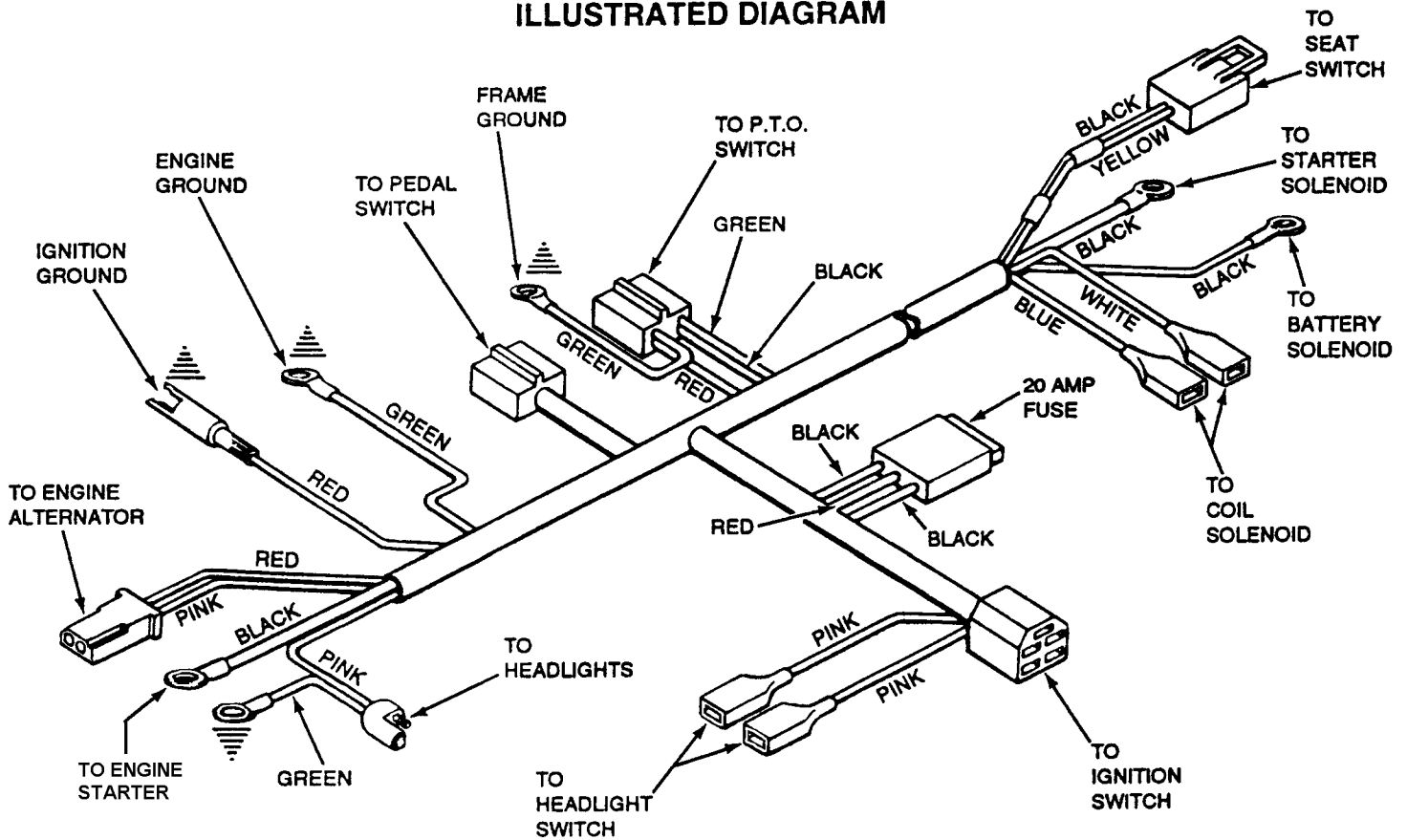
ELECTRICAL - B&S Engines

NOTE: Switches shown with,
Pedal locked down
Blade disengaged
Seat vacant



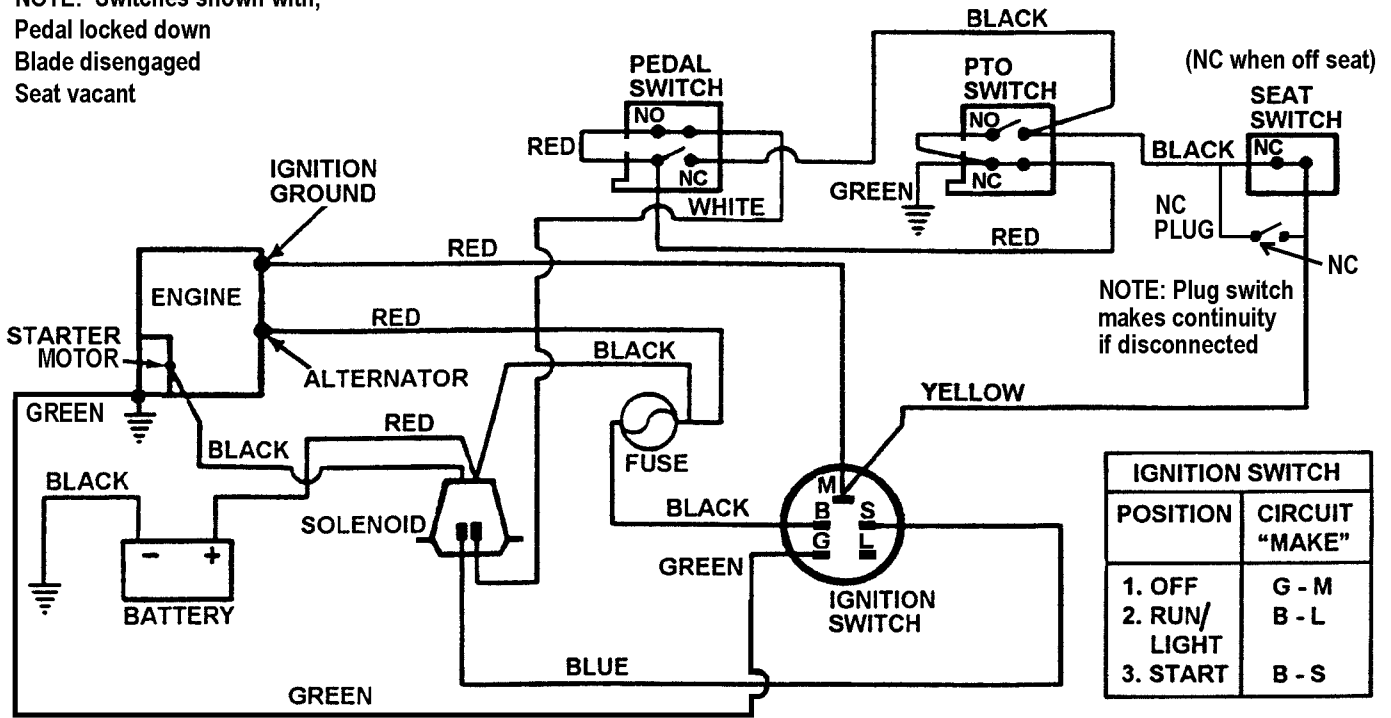
SCHEMATIC - WIRING HARNESS P.N. 2-6616
(MODELS: LT140H33DBV, LT140H33DB, LT145H38DBV & NLT145H38DBV)

ILLUSTRATED DIAGRAM



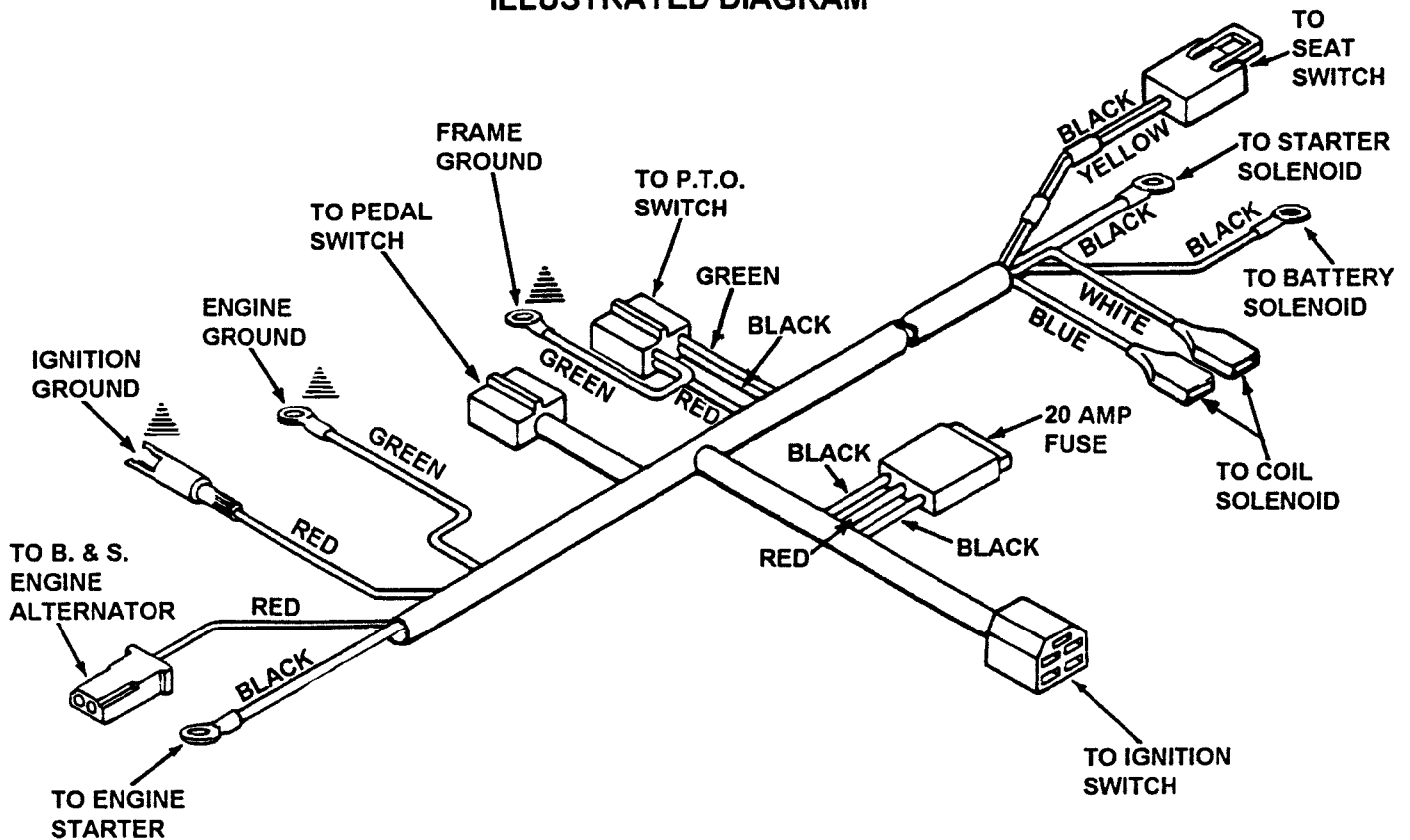
ELECTRICAL- Briggs & Stratton Engines

NOTE: Switches shown with,
Pedal locked down
Blade disengaged
Seat vacant

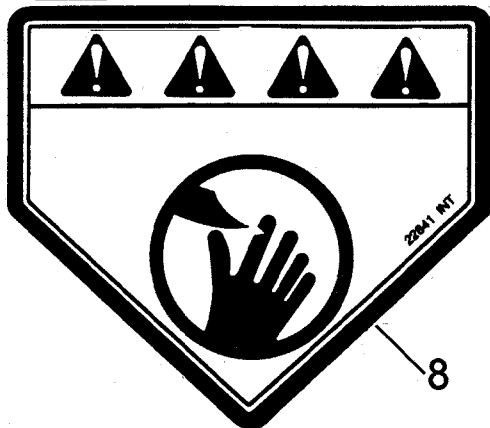
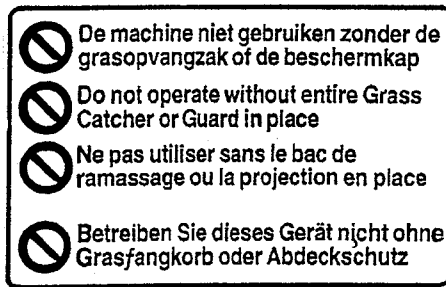
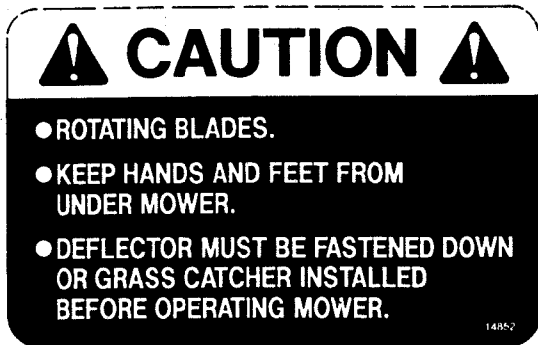


SCHEMATIC- WIRING DIAGRAM Part No. 2-4364
(MODELS: LT120G30DB, ELT125G33DB, NLT120G30BD & LT125G38DB)

ILLUSTRATED DIAGRAM



DECALS



CLUTCH/BRAKE PEDAL **LIFT LEVER**

PARKING BRAKE LATCH

WARNING **TO AVOID SERIOUS INJURY OR DEATH**

BEFORE MOWING:

- READ OPERATOR'S MANUAL AND OTHER INSTRUCTIONS FURNISHED WITH THIS MACHINE AND ATTACHMENTS.
- KNOW LOCATION AND FUNCTION OF ALL CONTROLS. PRACTICE WITH BLADE OFF TO LEARN CONTROLS AND CHECK FOR PROPER OPERATION.
- MAKE SURE THAT SHIELDS, GUARDS, SWITCHES AND OTHER SAFETY DEVICES ARE IN PROPER POSITION AND FUNCTIONAL.
- CLEAR MOWING AREA OF WIRE, ROCKS AND OTHER OBJECTS THAT COULD CAUSE INJURY IF THROWN BY BLADE.
- DO NOT MOW ON SLOPES STEEPER THAN 15 DEGREES (ONE FOOT OF RISE IN FOUR FEET OF LENGTH).
- DO NOT MOW ACROSS FACE OF SLOPES. MOW UP AND DOWN.
- REDUCE SPEED AND AVOID SHARP TURNS ON SLOPES.
- AVOID UPHILL STARTS. IF MACHINE IS STOPPED GOING UP SLOPE, TURN BLADE OFF AND BACK DOWN SLOPE.
- KEEP A SAFE DISTANCE (AT LEAST THREE FEET) AWAY FROM EDGE OF DITCHES AND OTHER DROP OFFS.

PROTECT CHILDREN AND OTHER PEOPLE:

- DO NOT ALLOW CHILDREN, PEE TEENAGERS ON MACHINE OR IN YARD WHEN MOWING. KEEP OTHERS SAFELY AWAY FROM OPERATING AREA.
- TEENAGERS AND OTHER INEXPERIENCED OPERATORS SHOULD BE CAREFULLY INSTRUCTED AND CLOSELY SUPERVISED.
- LOOK BEHIND MACHINE BEFORE BACKING.
- NEVER CARRY CHILDREN, EVEN WITH THE BLADES OFF.

PREVENT TIP-OVER ACCIDENTS:

- DO NOT MOW ON SLOPES OR IN ANY AREA WHERE STABILITY OR TRACTION IS IN DOUBT. IF UNCERTAIN, DRIVE OVER AREA FIRST WITH BLADE OFF.
- AVOID SUDDEN TURNS.

TO STOP MACHINE:
DEPRESS CLUTCH BRAKE PEDAL

TO SET PARKING BRAKE:
DEPRESS CLUTCH BRAKE PEDAL, RAISE PARKING LATCH AND HOLD WHILE RELEASING PEDAL.

TO ROLL MACHINE:
MOVE ROLL RELEASE LEVER, LOCATED UNDER FRAME AT REAR OF UNIT, TO THE RIGHT AND LOCK INTO PLACE.

TO START ENGINE:
OPERATOR MUST BE IN SEAT, MOWER BLADE OFF, AND CLUTCH/BRAKE PEDAL DEPRESSED.

TO START DRIVING:
RELEASE PARKING BRAKE. SLOWLY MOVE SPEED SELECTOR FORWARD FOR FORWARD TRAVEL AND BACKWARD FOR REVERSE TRAVEL.

TO AVOID UPHILL STARTS:
IF MACHINE IS STOPPED GOING UP SLOPE, TURN BLADE OFF AND BACK SLOWLY DOWN SLOPE. IF UPHILL STARTS MUST BE MADE, SET THROTTLE AT HALF SPEED. THE SPEED SELECTOR MUST BE IN NEUTRAL.

TO CHANGE DRIVING SPEEDS:
SHIFT SPEED SELECTOR WITHOUT USING PEDAL.

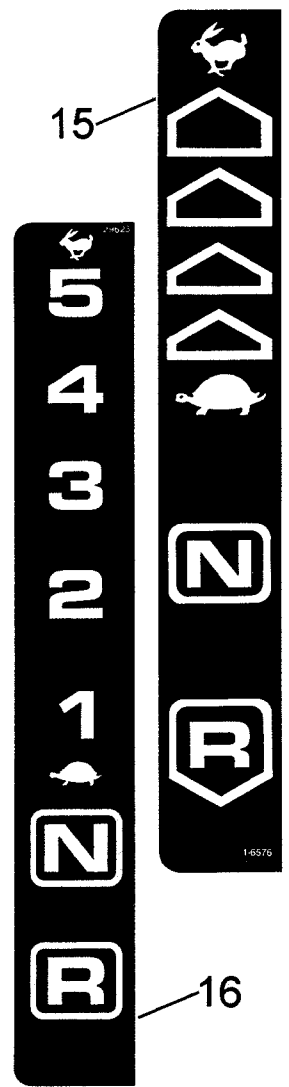
TO SET CUTTING HEIGHT:
DEPRESS THUMB BUTTON ON LIFT LEVER. MOVE FORWARD TO LOWER. PULL BACK TO RAISE. RELEASE BUTTON.

TO MOW PROPERLY:
INCREASE ENGINE SPEED AND OR DECREASE DRIVING SPEED UNTIL CUT IS SMOOTH AND ENGINE IS NOT UNDER HEAVY STRAIN.

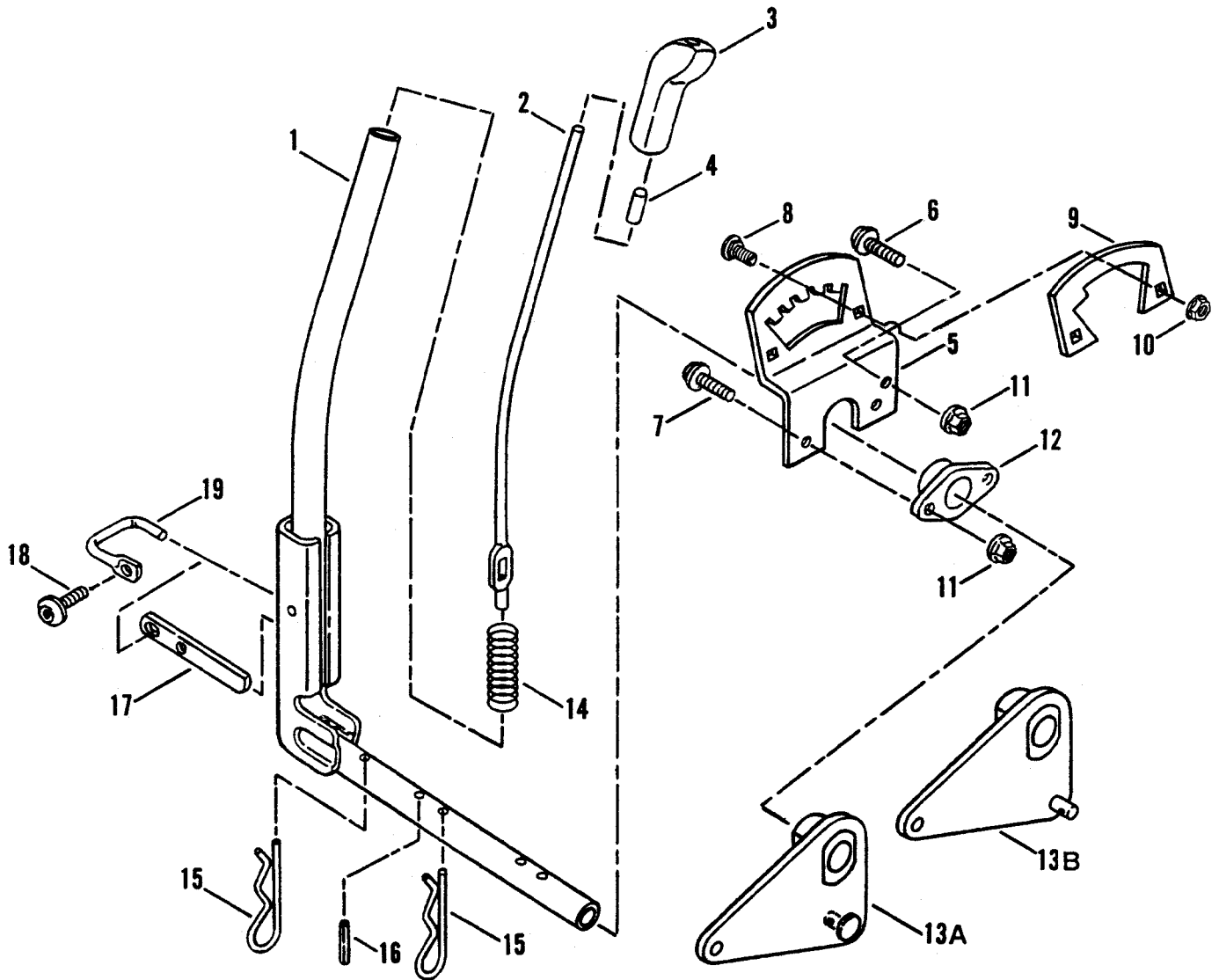
BLADE LEVER
LIFT TO ENGAGE
PRESS DOWN TO RELEASE



ITEM	PART NO.	DESCRIPTION
1	2-3997	DECAL, 30 Inch
2	2-2991	DECAL, 33 Inch Hi-Vac
3	1-6973	DECAL, Caution, Rotating Blades
4	1-4852	DECAL, Caution, Rotating Blades
5	2-6415	DECAL, Caution, Battery Location
6	2-9784	DECAL, Deck/Chute International Warning
7	1-3010	DECAL, Danger, Cut-Finger (shown)
--	2-6831	DECAL, Danger, Cut-Finger (Heavy Adhesive Version, Pictorially Same As Above)
8	2-2841	DECAL, Cut-Finger (International) (shown)
9	3-4161	DECAL, Instructions, Frame, Top (Hydro Drive Models) (shown)
--	2-9766	DECAL (French Version of Above)
--	2-9765	DECAL (German Version of Above)
--	2-9876	DECAL (Dutch Version of Above)
10	2-4457	DECAL- Instructions, Frame, Top (Gear Drive Models) (not shown)
--	2-9762	DECAL (French Version of Above)
--	2-9763	DECAL (German Version of Above)
--	2-9874	DECAL (Dutch Version of Above)
11	2-8561	DECAL, Console, Basic (shown)
--	2-8643	DECAL, Console, Nolight
12	2-3009	DECAL, Noise Control, Euro
13	7-1544	LOGO, Convert- Blue/Silver
14	2-9776	DECAL, European Community
15	1-6576	DECAL, Shift Cover
16	2-9623	DECAL, Shift Detent (5-Speed)
17	2-9077	DECAL, 1996 Year of Manufacture
18	3-6434	DECAL, 1997 Year of Manufacture



IMPLEMENT LIFT PARTS



ITEM	PART NO.	DESCRIPTION
1	4-1015	LEVER, Implement Lift (Models: LT120G30DB, NLT120G30DB, LT125G38DB, LT145H38DBV & NLT145H38DBV)
--	4-1655	LEVER, Implement Lift (Models: LT140H33DBV, ELT125G33DB & ELT140H33DB)
2	2-2565	ROD, Lift Lever
3	1-9363	KNOB, Lift Lever
4	1-4361	CAP, Lift Lever Rod
5	3-3449	QUADRANT, Lift Lever
6	9-1001	SCREW, 5/16-18 x 5/8" Truss Head (Torx)
7	9-1000	SCREW, 5/16-18 x 7/8" Truss Head (Torx) (2)
8	9-0005	BOLT, 1/4-20 x 1/2" Short Neck Carriage, Grade 5 (2)
9	3-4559	DETENT, Highcut Lockout (Euro Models Only!)
10	9-0583	NUT, 1/4-20 Hex Flange Lock, Grade 5 (2)
11	9-0585	NUT, 5/16-18 Hex Flange Lock, Grade 5 (2)
12	2-2567	PIVOT, Lift Lever
13A	4-1254	BELLCRANK, Lift Lever (Models: LT140H33DBV, ELT125G33DB & ELT140H33DB)
13B	4-1255	BELLCRANK, Lift Lever (Models: LT120G30DB, NLT120G30DB, LT125G38DB, LT145H38DBV & NLT145H38DBV)
14	2-2566	SPRING
15	1-3844	PIN, Hair, 5/32 x 2 5/8" (2)
16	2-2895	PIN, Dowel, 1/4 x 1 1/8"
17	2-2568	DETENT, Latch
18	9-0999	SCREW, 1/4-20 x 5/8" Truss Head (Torx)
19	2-4742	LATCH, Pivot

Parts Manual for

SNAPPER®

GEAR & HYDRO DRIVE MODELS:

LT120G30DB, NLT120G30DB

LT125G38DB

ELT125G33DB

LT140H33DBV

ELT140H33DBV

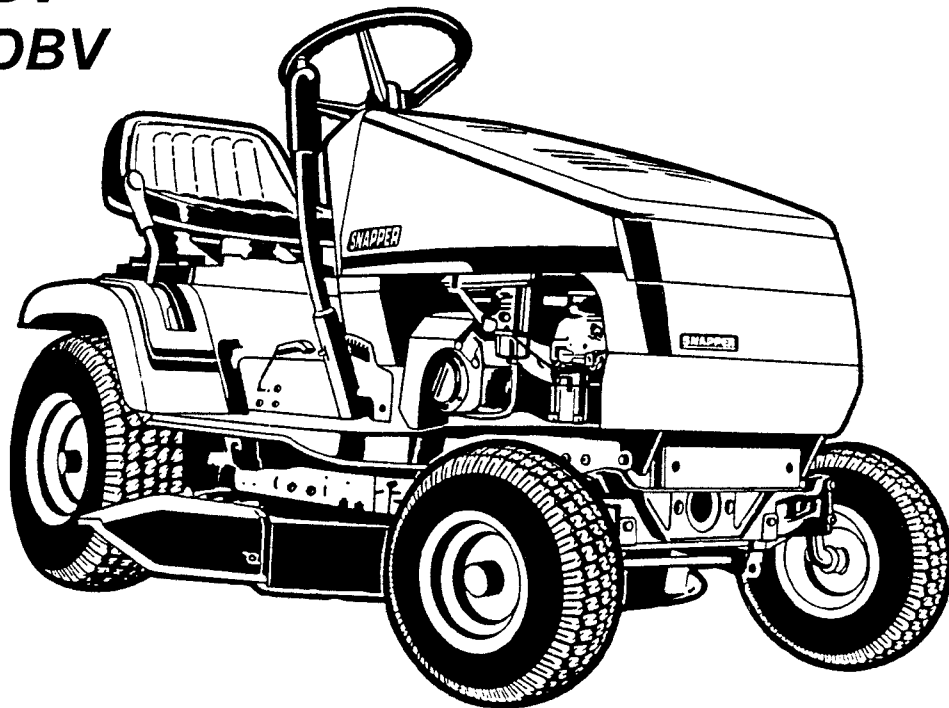
LT145H38DBV

NLT145H38DBV

SERIES "D"

LAWN

TRACTORS



SNAPPER® McDonough, GA., 30253 U.S.A.

COPYRIGHT © 1998
SNAPPER INC.
ALL RIGHTS RESERVED

MANUAL No. 06444

(Rev. 3, 06/05/03)

Printed in U.S.A.