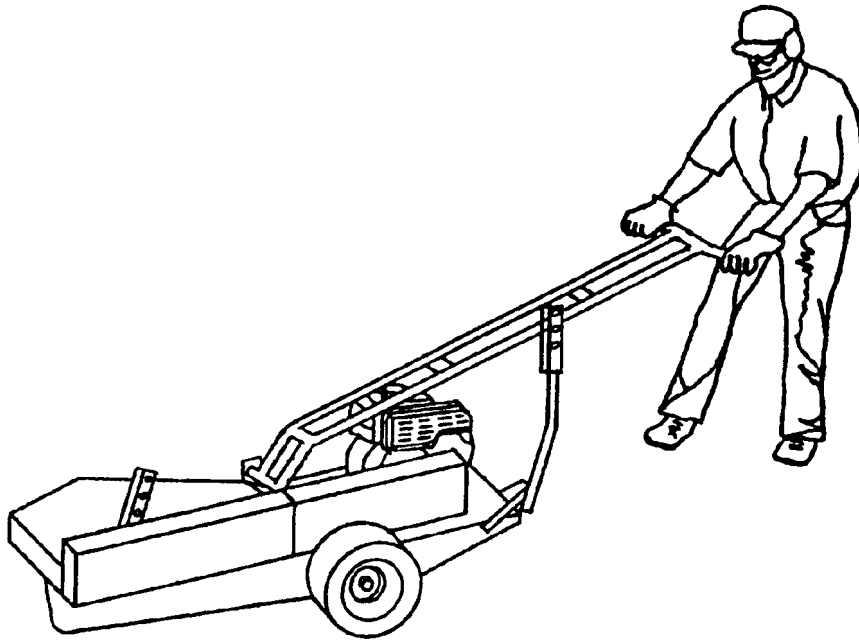


Parts Manual for

# SNAPPER®

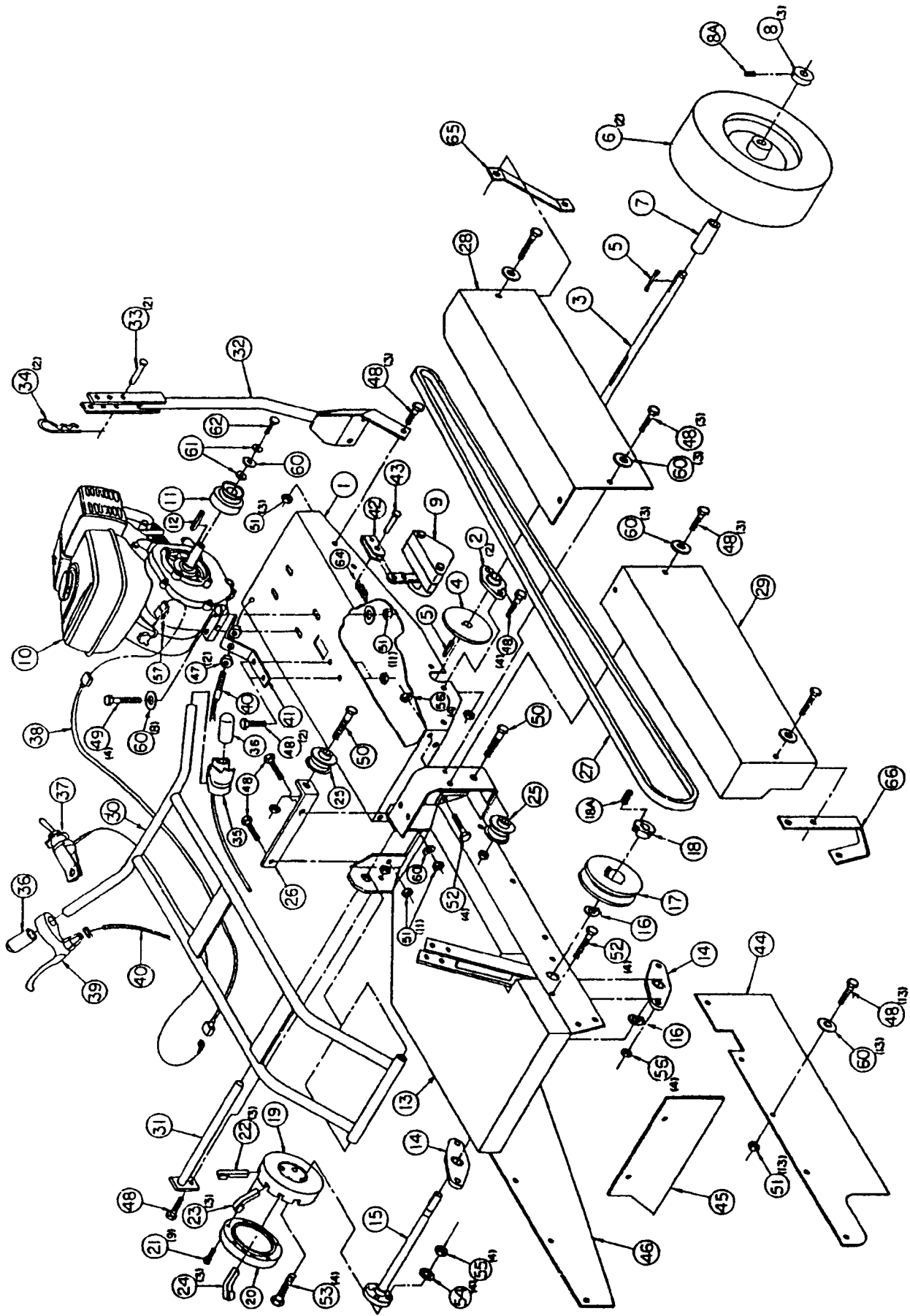
## CONVERTIBLE-PORTABLE STUMP CUTTER SERIES 0

<b>MODEL</b>
<b>CPSC5.5</b>
<b>CPSC9V</b>



PARTS FOR THIS MACHINE MUST BE ORDERED FROM:  
1189 Old Schuylkill Road \* P.O. Box 111 \* Parker Ford, PA 19457-0111  
Phone: (610) 495-7181 or (800) 348-1117, Fax: (610) 495-5951

**SNAPPER**® McDonough, GA., 30253 U.S.A.

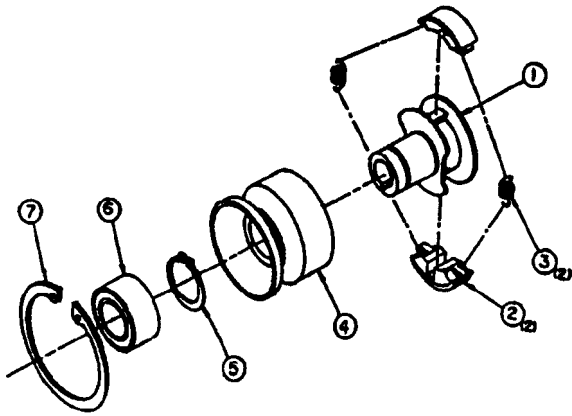


<u>Item No.</u>	<u>CPSC5.5 Part No.</u>	<u>CPSC9V Part No.</u>	<u>Qty.</u>	<u>Description</u>
1	807-0052	807-0073	1	Engine Base Weldment
2	030-0055		2	Bearing w/ 1" Dia. Bore
3	807-0058		1	Axle
4	807-0005		1	Brake Rotor
5	703-0424		2	1/4" x 1/4" x 2" Key
6	807-0013		2	Wheel (13 x 5.00-6)
7	807-0060		1	Wheel Spacer
8	807-0059		3	Axle Locking Collar
8A	080-0053		1	5/16-18 x 5/16" Set Screw
9	807-0006		1	Brake Caliper
10	030-0195	030-0201	1	Engine Briggs & Stratton
11	807-0034	-	1	Clutch - 3/4 Ball Bearing
-	-	030-0202	1	Clutch - 1" Dia Bore
12	100-0018	500-0031	1	3/16" x 3/16" x 1" Shaft Key
13	807-0041	807-0077	1	Head Frame Weldment
14	030-0115		2	Bearing 1-3/16" Bore
15	807-0009		1	Drive Shaft Weldment
16	030-0117		2	1-3/16" Retaining Ring
17	807-0004		1	Pulley - 5 3/4 Dia.
18	030-0118		1	Bushing 1 3/16"
18A	020-0001		2	3/8-16" x 5/8" Lg. Set Screw
19	807-0007		1	Cutter Head Body
20	807-0008		1	Cutter Head Cover
21	090-0513		9	3/8-24 x 1" Socket Hd. Cap Screw GR8
22	807-0001		3	Cutter Teeth - Straight
23	807-0002		3	Cutter Teeth - 25 Degree
24	807-0003		3	Cutter Teeth - 45 Degree
25	909-0012		2	Idler Pulley
26	807-0029		1	Idler Arm
27	807-0012		1	Belt - Kevlar
28	807-0039	807-0082	1	Belt Guard - Engine
29	807-0040	807-0081	1	Belt Guard - Head
30	807-0015	807-0068	1	Handle Weldment
31	807-0025		1	Pivot Pin
32	807-0020		1	Handle Bar Brace
33	807-0056		2	Clevis Pin 5/16" x 2" Lg.
34	100-0015		2	3/32" Hair Cotter
35	807-0014	807-0076	1	Throttle Cable Assembly
36	500-0041		2	Black Handle Grip - 7/8" x 5"
37	807-0038		1	Kill Switch - Toggle Type
38	807-0033		1	Kill Switch Wire Assembly
39	807-0037		1	Brake Handle
40	807-0035		1	Brake Cable Assembly
41	807-0028		1	Brake Cable Bracket
42	807-0036		1	Full Clevis
43	807-0057		1	Clevis Pin 1/4" x 7/8" Lg.
44	807-0030		1	Drive Side Guard
45	807-0031		1	Engine Side Guard
46	807-0032		1	Open Side Guard
47	090-0514		2	5/16-24 Jam Nut
48	090-0088		32	5/16-18 x 1" HHCS, GR5
49	090-0090		4	5/16-18 x 1-1/2" HHCS, GR5
50	090-0072		2	5/16-18 x 2" HHCS, GR5
51	090-0460		38	5/16-18 Nylok Locknut
52	090-0111		8	3/8-16 x 1-1/4" HHCS, GR5
53	090-0113		4	3/8-16 x 1-3/4" HHCS, GR5
54	090-0228		4	3/8" Med. Split Lockwasher
55	090-0207		4	3/8-16 Hex Nut
56	090-0461		8	3/8-16 Nylok Locknut
57	020-0056		1	Self-Stripping Wire Connector
60	090-0233		32	5/16" Flatwasher
61	090-0394		2	5/16" Med. Split Lockwasher
62	090-0515		1	5/16-24 x 1-1/2" HHCS, GR5
64	703-0425		1	Spring
65	807-0063		1	Belt Guard Bracket - Engine
66	807-0064		1	Belt Guard Bracket - Head

Order Parts by Engine Horsepower, Part Number and Part Description

**3/4 " Clutch Parts List**

**Part No. 807-0034**



Item No.	Part No.	Qty.	Description
1	030-0183	1	Hub Assembly
2	030-0184	2	Shoe
3	030-0185	2	Spring
4	030-0186	1	Drum Assembly
5	030-0187	1	Retaining Ring
6	030-0188	1	Bearing
7	030-0189	1	Retaining Ring

**⚠ CAUTION ⚠**  
**DO NOT REMOVE PROTECTIVE COVER WHILE MACHINE IS RUNNING. SEVERE INJURY WILL RESULT.**

091-0059



091-0057



091-0073



091-0160

**⚠ CAUTION ⚠**

1. STOP ENGINE AND DISCONNECT SPARK PLUG WIRE BEFORE WORKING ON OR REMOVING CUTTER HEAD.
2. WEAR SAFETY GLASSES, WORK SHOES, GLOVES, AND LONG PANTS WHILE OPERATING THIS MACHINE.
3. NEVER CLEAN OUT CHIPS FROM UNDER MACHINE WHILE ENGINE IS RUNNING OR CUTTER HEAD IS ROTATING.
4. NEVER OPERATE WITH DAMAGED OR MISSING SAFETY GUARDS.

FAILURE TO FOLLOW THESE CAUTIONS COULD RESULT IN A SERIOUS INJURY.

091-0161

**⚠ CAUTION ⚠**  
**FLYING CHIPS - KEEP AREA CLEAR OF OBSERVERS & PETS**

091-0159

*Parts Manual for*

**SNAPPER®**

**CPSC5.5 & CPSC9V CONVERTIBLE-  
PORTABLE STUMP CUTTER  
SERIES 0**

COPYRIGHT © 1999  
SNAPPER INC.  
ALL RIGHTS RESERVED

**SNAPPER®** McDonough, GA., 30253 U.S.A.