

MASSEY FERGUSON
LAWN & GARDEN EQUIPMENT

PARTS MANUAL

2300 SERIES
FRONTCUT

Attachments & Accessories

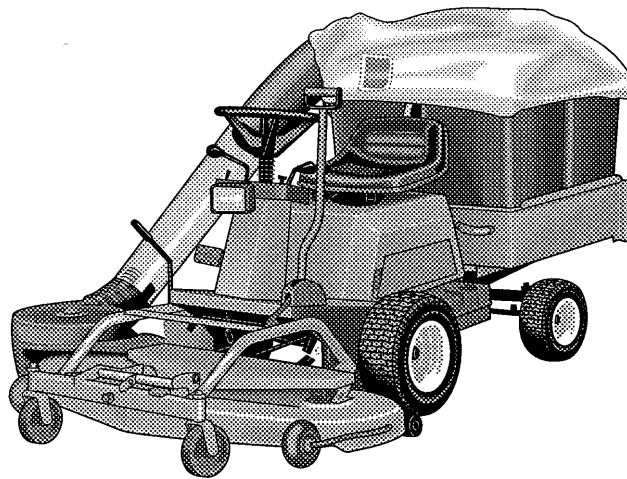


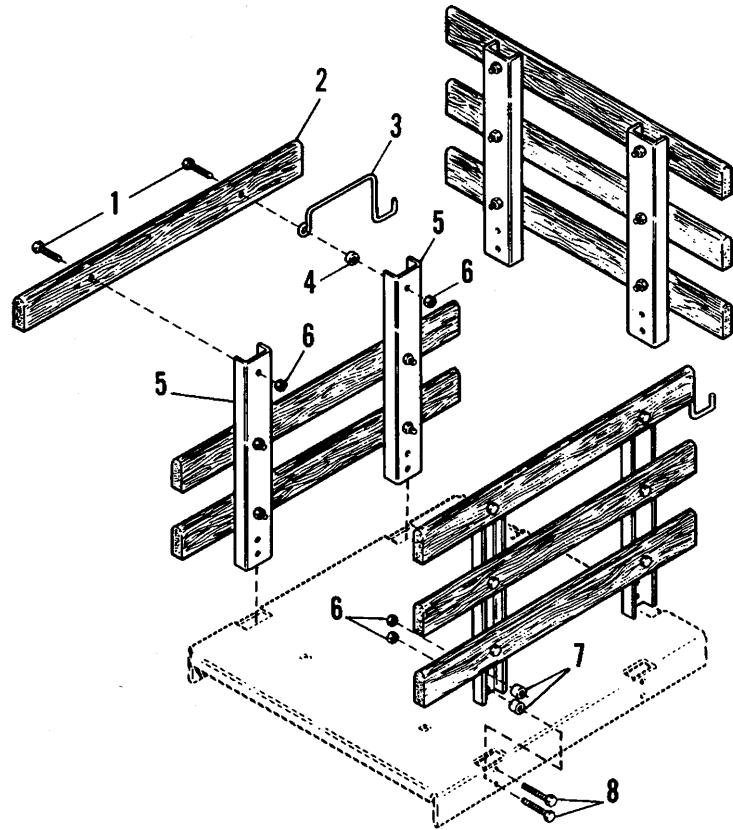
Table of Contents

<i>Mfg. No.</i>	<i>Description</i>	<i>Page No.</i>
1691256	WOODSIDE TRANSPORTER	2
1691792	TURBO TWIN CATCHER	
	Cover Assy.	4
	Tube Assy.	6
	Hitch Assy.	8
1691814	TURBO QUAD BAGGER	10
1691998	TURBO BLOWER SYSTEM (42" & 48" Mowers)	12
1692100	QUAD BAGGER DUMP CART	15
	STANDARD HARDWARE TORQUE SPECIFICATIONS	Inside Back Cover

NOTE: Order the following products as wholegoods. For service parts, contact:

Brinly-Hardy Co.
P.O. Box 1116
Louisville, KY 40201
502-585-3351

1690819	DETHATCHER	
1691785	ADAPTOR FOR DETHATCHER	



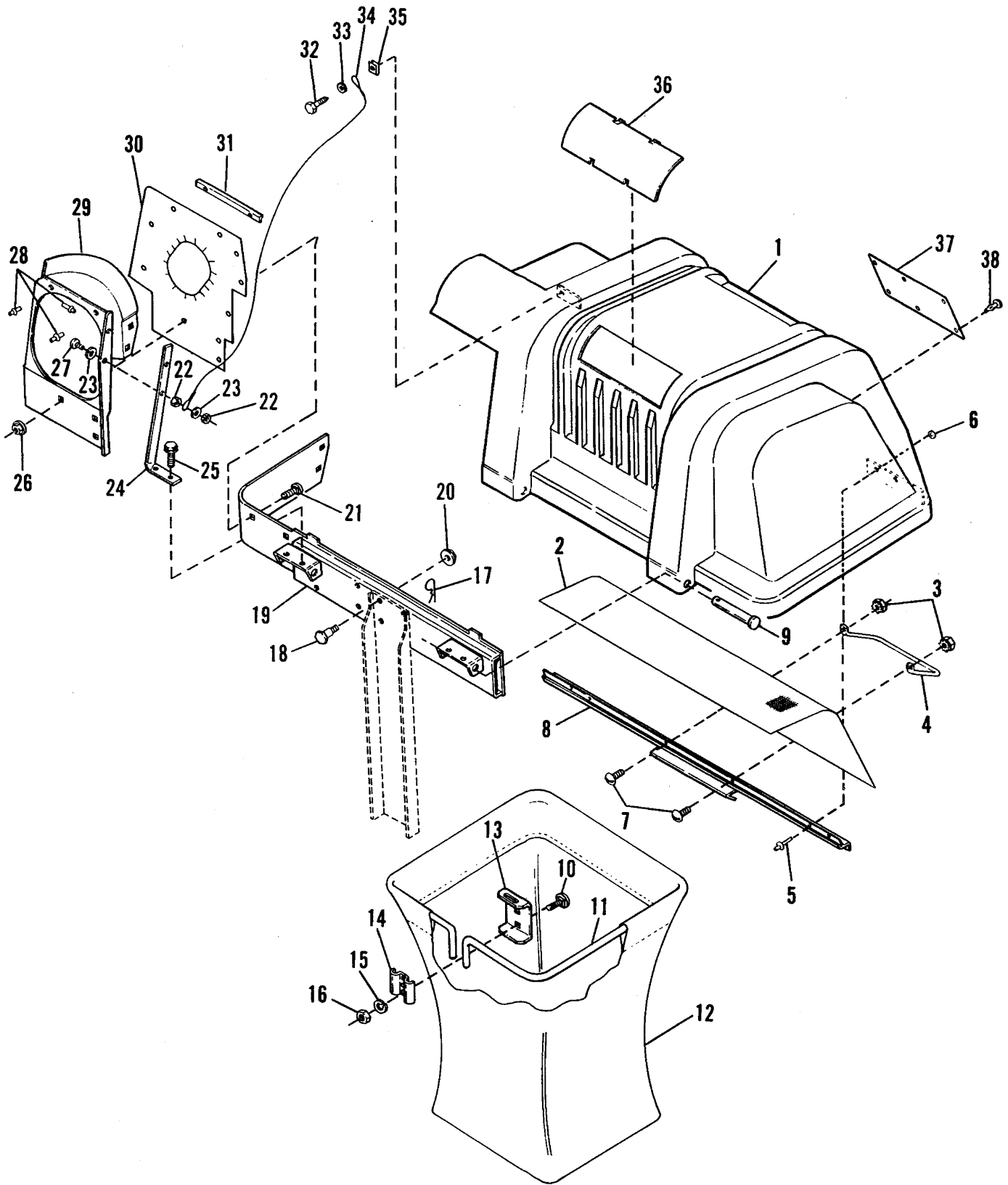
NOTE: Unless noted otherwise, use the torque specification chart located on the inside back cover.

Mfg. No. 1691256

Woodside Transporter

REF. NO.	PART NO.	QTY.	DESCRIPTION
1	1922837	18	CAPSCREW, 1/4-20 x 1-1/2
2	1678370	9	SLAT, Wood
3	1678428	2	LATCH, Gate
4	1960234	2	SPACER
5	1678369	6	CHANNEL
6	1923358	26	NUT, Hex, Lock, 1/4-20
7	1679911	8	SPACER
8	1921960	8	CAPSCREW, 1/4-20 x 1

Turbo Twin Catcher - Cover Assy.

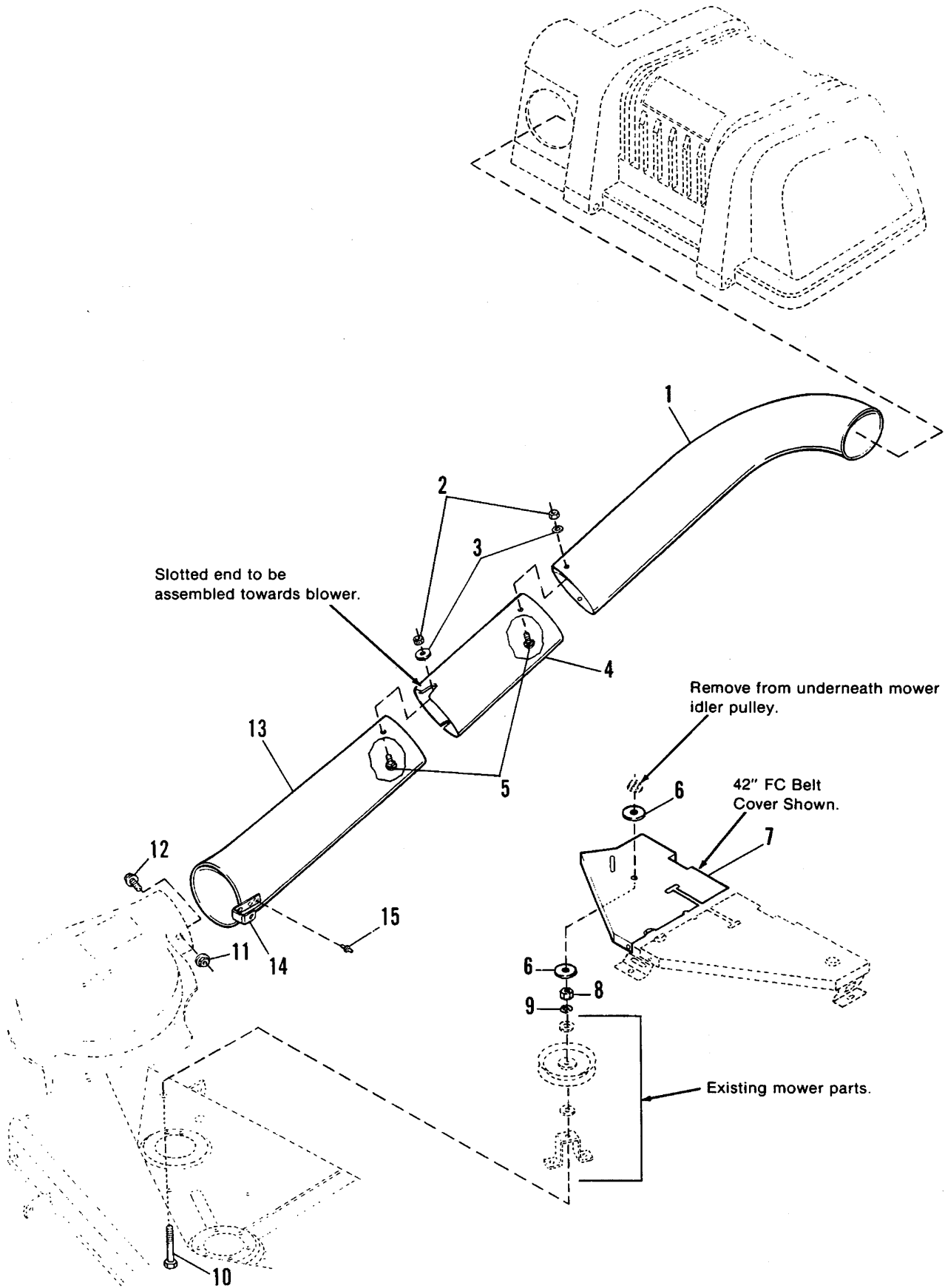


NOTE: Unless noted otherwise, use the torque specification chart located on the inside back cover.

Turbo Twin Catcher - Cover Assy.

REF. NO.	PART NO.	QTY.	DESCRIPTION
1	1704056	1	COVER (Incl. Ref. Nos. 2, 5, 6, 8, 32-35)
2	1703700	1	SCREEN
3	1928919	2	NUT, Hex, #10-32
4	1703853	1	HANDLE, Latch
5	1675043	4	RIVET, Pop
6	1910531	4	WASHER
7	1930531	2	SCREW, Truss Hd., #10-32 x 1/2
8	1704057	1	SEAL, Clip
9	960367	2	PIN, Round Hd.
10	1931333	4	CARRIAGE BOLT, 5/16-18 x 3/4
11	1703855	2	HOOP, Bag
12	1703764	2	BAG, Grass
13	1703807	2	HANGER
14	1672023	2	CLAMP
15	1917356	4	LOCKWASHER, 5/16
16	1917372	4	NUT, Hex, 5/16-18
17	1960221	2	PIN, Hair Pin
18	1921966	4	CAPSCREW, Hex Hd., 3/8-16 x 7/8
19	1703822	1	CROSS ASSY.
20	1928352	4	NUT, Hex, Whizlock, 3/8-16
21	1960252	5	CARRIAGE BOLT, 1/4-20 x 5/8
22	1960077	2	NUT, Hex, Lock, #8-32
23	1960096	2	WASHER
24	1704507	1	STRAP, Tube Support
25	1927428	2	SCREW, Taptite, 1/4-20 x 3/8
26	1930642	5	LOCKNUT, Flange, End Lock, 1/4-20
27	1960399	1	SCREW, Round Hd., #8-32 x 7/8
28	1960381	7	RIVET, Pop
29	1704075	1	SUPPORT, Tube (Incl. Ref. Nos. 22, 23, 24 & 27-31)
30	1704135	1	SEAL, Cover
31	1704508	3	BRACKET, Seal
32	1960400	1	SCREW, Self-tapping, #10-12 x 5/8
33	1917377	1	WASHER, Plain, 1/4
34	1705876	1	CABLE, Double Loop
35	1933886	1	NUT, Speed
36	1704180	2	WINDOW
37	1704405	1	DECAL, Safety
38	1667248	6	CLIP, Canoe

Turbo Twin Catcher - Tube Assy.

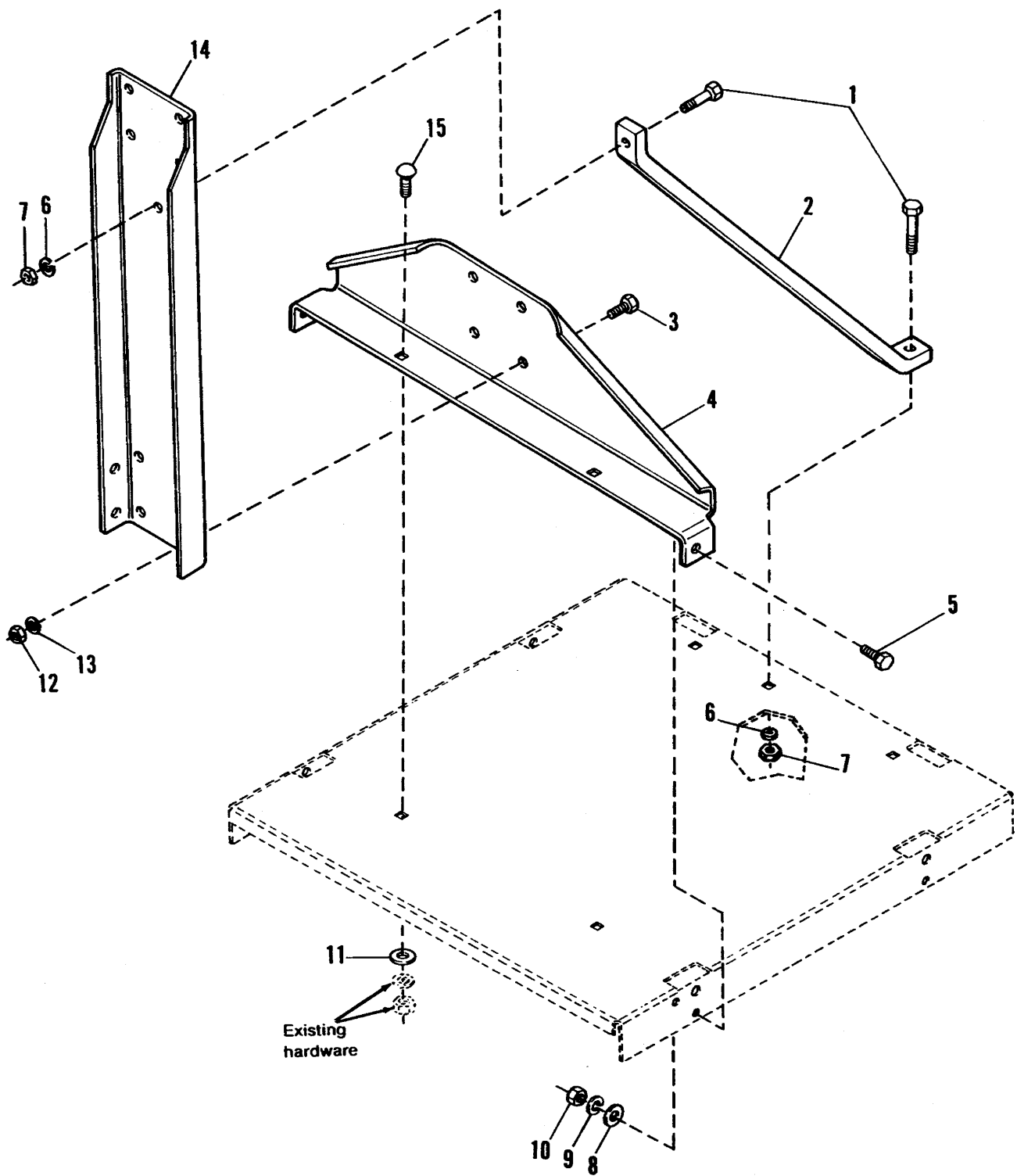


Mfg. No. 1691792

Turbo Twin Catcher - Tube Assy.

REF. NO.	PART NO.	QTY.	DESCRIPTION
1	1704283	1	TUBE, Upper
2	1933896	4	NUT, Hex, Lock w/Nylon Insert, #10-24
3	1960096	4	WASHER, Flat
4	1704854	1	TUBE, Middle
5	1960404	4	SCREW, Truss Hd., #10-24 x 3/4
6	1924356	2	WASHER, Plain
7	1704369	1	COVER ASSY., Belt
8	1916950	1	NUT, Hex, 3/8-16
9	1916965	1	LOCKWASHER, 3/8
10	1922130	1	CAPSCREW, Hex Hd., 3/8-16 x 2-1/4
11	1930641	1	NUT, Hex, Flange, 1/4-20
12	1960252	1	CARRIAGE BOLT, 1/4-20 x 5/8
13	1705112	1	TUBE ASSY., Lower
14	1705063	1	CLIP, Tube
15	1673320	2	RIVET

Turbo Twin Catcher - Hitch Assy.

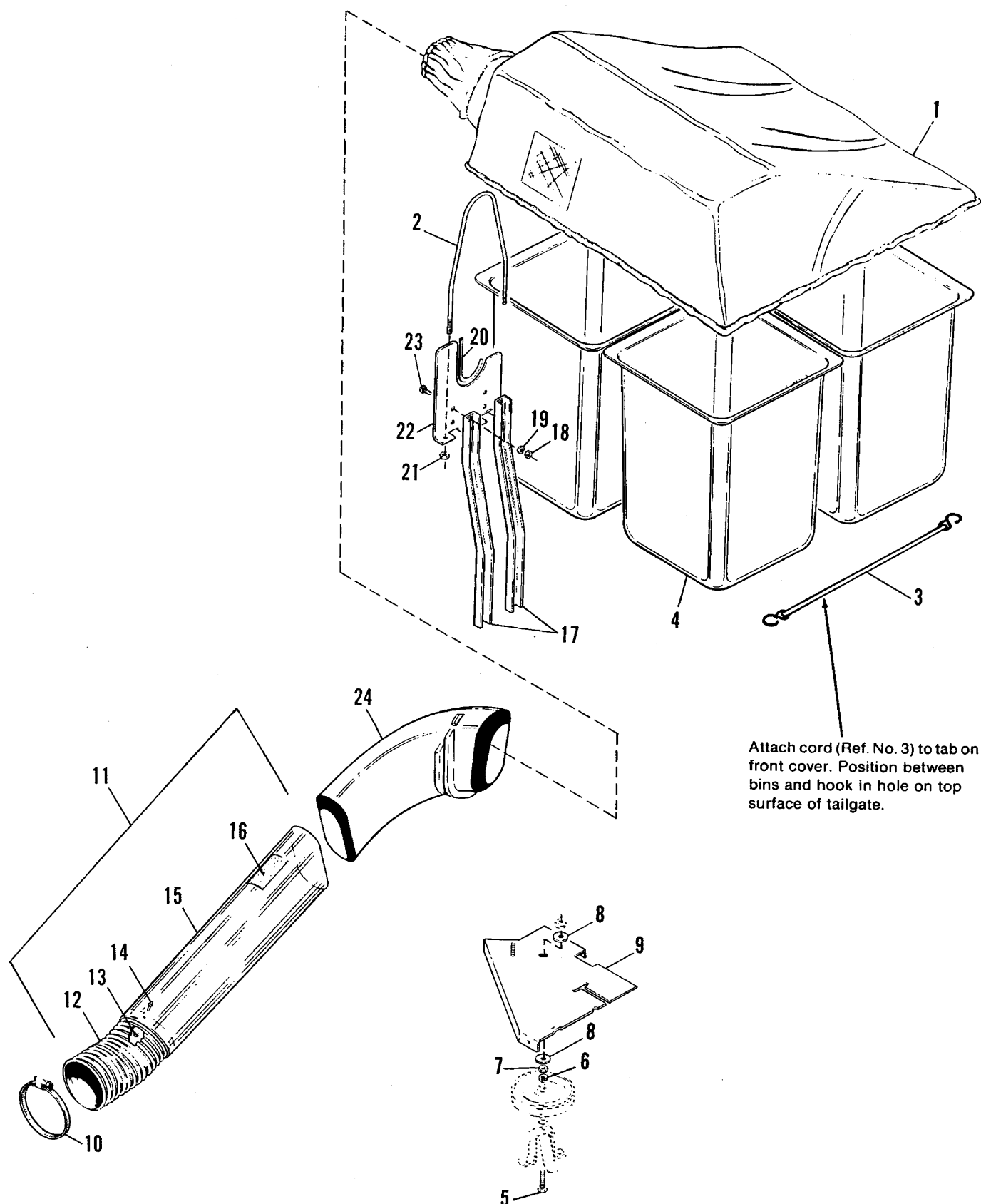


NOTE: Unless noted otherwise, use the torque specification chart located on the inside back cover.

Mfg. No. 1691792

Turbo Twin Catcher - Hitch Assy.

REF. NO.	PART NO.	QTY.	DESCRIPTION
1	1921977	2	CAPSCREW, Hex Hd., 5/16-18 x 1-1/4
2	1705072	1	BRACE, Bar
3	1921210	4	CAPSCREW, Hex Hd., 3/8-16 x 1
4	1703844	1	BRACKET, Lower
5	1921959	2	CAPSCREW, Hex Hd., 1/4-20 x 5/8
6	1917356	3	LOCKWASHER, 5/16
7	1917372	3	NUT, Hex, 5/16-18
8	1921319	2	WASHER, Flat
9	1916964	2	LOCKWASHER, 1/4
10	1916622	2	NUT, Hex, 1/4-20
11	1933468	2	WASHER, Flat
12	1916950	4	NUT, Hex, 3/8-16
13	1916965	4	LOCKWASHER, 3/8
14	1703846	1	SUPPORT, Upright
15	1931335	2	CARRIAGE BOLT, 5/16-18 x 1



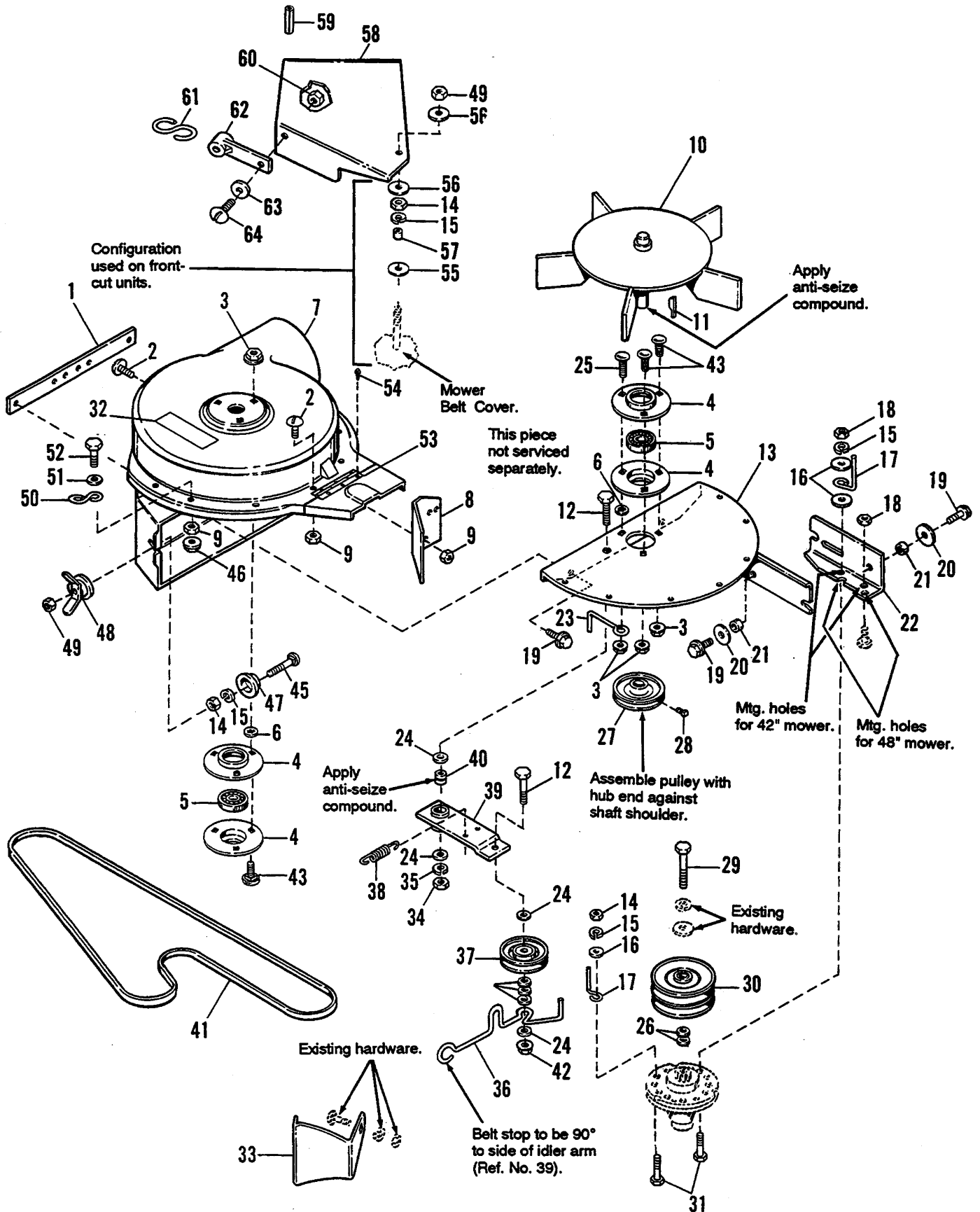
Attach cord (Ref. No. 3) to tab on front cover. Position between bins and hook in hole on top surface of tailgate.

NOTE: Unless noted otherwise, use the torque specification chart located on the inside back cover.

Mfg. No. 1691814**Turbo Quad Bagger**

REF. NO.	PART NO.	QTY.	DESCRIPTION
1	1702243	1	HOOD
2	1702829	1	CLAMP, Elbow
3	1705282	1	SHOCK CORD
4	1703378	4	BASKET, Grass
5	1922130	1	CAPSCREW, Hex, 3/8-16 x 2-1/4
6	1916965	1	LOCKWASHER, 3/8
7	1916950	1	NUT, Hex, 3/8-16
8	1924356	2	WASHER, Plain
9	1704369	1	COVER ASSY., 42" Mower
	1704371	1	COVER ASSY., 48" Mower
10	1679896	1	CLAMP, 6"
11	1704973	1	TUBE ASSY. (Incl. Ref. Nos. 12 - 16)
12	1679895	1	HOSE, 6" I.D.
13	1910531	4	WASHER, Rivet
14	1673320	4	RIVET, Pop
15		1	TUBE (Order Ref. No. 11)
16	1675766	1	DECAL, Cleaning Instructions
17	1702828	2	CHANNEL, Support
18	1916622	4	NUT, Hex, 1/4-20
19	1916964	4	LOCKWASHER, 1/4
20	1673874	1	TRIM
21	1923362	2	NUT, Hex, Centerlock, 5/16-18
22	1702827	1	BRACKET, Saddle
23	1960252	4	CARRIAGE BOLT, 1/4-20 x 5/8
24	1669793	1	ELBOW
25	1702829	1	CLAMP, Elbow

Turbo Blower System - 42" & 48" Mowers

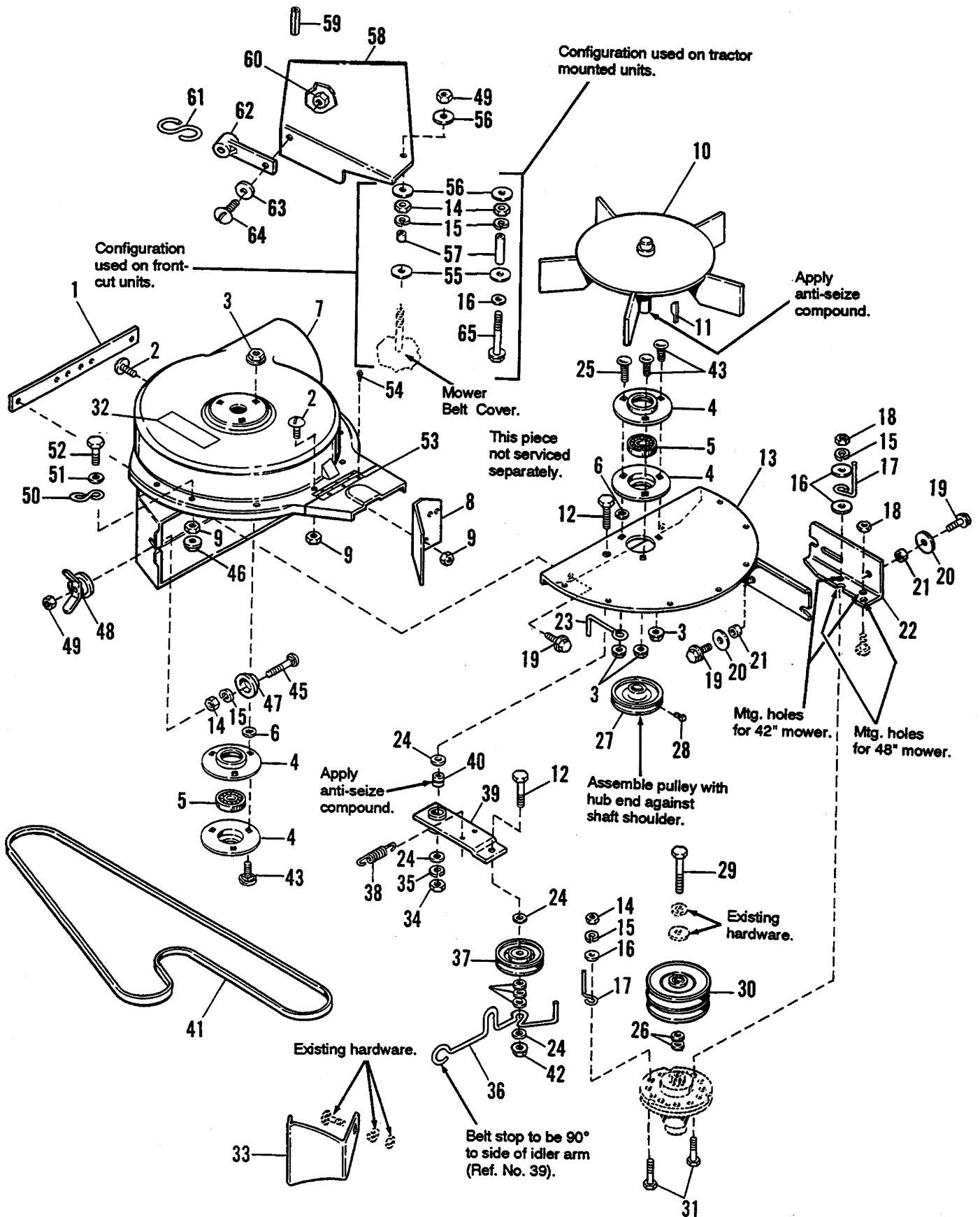


Turbo Blower System - 42" & 48" Mowers

REF. NO.	PART NO.	QTY.	DESCRIPTION
1	1706630	1	STRIP, Reinforcement
2	1923341	9	SCREW, Truss Hd., 1/4-20 x 5/8
3	1927557	6	NUT, Flange, Lock, 5/16-18
4	1665982	4	BEARING, Retainer
5	108202	2	BEARING
6	933988	6	PUSH NUT, 5/16
7	1706650	1	FAN HOUSING & HINGE ASSY. (Incl. Ref. Nos. 32, 53 & 54)
8	1678994	1	BAFFLE, Fan Housing
9	1930641	10	NUT, Hex, Nylon Lock, 1/4-20
10	1706630	1	FAN ASSY., 5 Blades
11	960403	1	KEY
12	1921971	2	CAPSCREW, Hex, 3/8-16 x 1-1/4
13	1706637	1	PLATE ASSY.
14	1917372	1	NUT, Hex, Full, 5/16-18
15	1917356	3	LOCKWASHER, 5/16
16	1919381	3	WASHER, Plain
17	1679105	2	STOP, Belt
18	1928698	2	NUT, Hex, Jam Lock, 5/16-18
19	1927429	5	SCREW, Taptite, 1/4-20 x 5/8
20	1960151	2	WASHER, 1/4
21	1675339	2	SPACER
22	1678676	1	BRACKET, Arbor
23	1678306	1	STOP, Belt
24	1924940	7	WASHER, Plain, 13/32
25	1931334	1	CARRIAGE BOLT, 5/16-18 x 7/8
26	1960114	2	WASHER (As required)
27	1706634	1	PULLEY, Driven
28	1928691	1	SETSCREW, Sq. Hd., 5/16-18 x 3/8
29	1927120	1	CAPSCREW, Hex, 7/16-14 x 2-1/4
30	1678609	1	PULLEY ASSY.
31	1933689	2	CAPSCREW, Hex, 5/16-18 x 1-1/2
32	1700259	1	DECAL, Danger, Blower
33	1678646	1	BAFFLE, Discharge
34	1916950	1	NUT, Hex, Full, 3/8-16
35	1916965	1	LOCKWASHER, 3/8
36	1701095	1	STOP, Belt
37	1708029	1	PULLEY, Idler
38	1679554	1	SPRING, Tension
39	1700861	1	IDLER ARM ASSY.
40	1666114	1	SPACER

Ref. Nos. 41 - 64 are on the following page.

Turbo Blower System - 42" & 48" Mowers

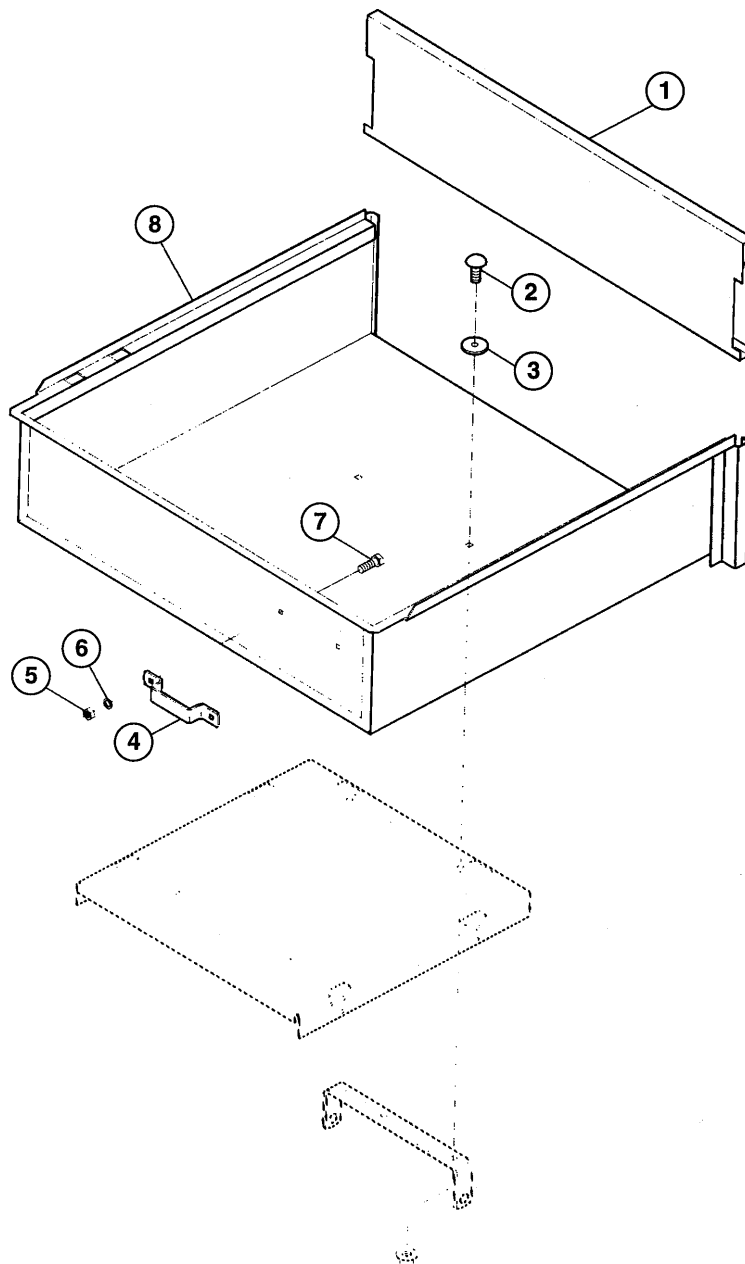


Turbo Blower System - 42" & 48" Mowers

REF. NO.	PART NO.	QTY.	DESCRIPTION
41	1700415	1	BELT, Turbo
42	1930645	1	NUT, Hex, Flange Lock, 3/8-16
43	1931333	5	CARRIAGE BOLT, 5/16-18 x 3/4
44	1678811	1	PLATE, Flange, Blower Housing
45	1960273	1	CARRIAGE BOLT, 5/16-18 x 2-1/4
46	1930642	1	NUT, Flange, Lock, 1/4-20
47	1679164	1	CLIP
48	1679163	1	NUT ASSY., Wing
49	1923362	1	NUT, Hex, Full, Lock, 5/16-18
50	1672689	1	"S" HOOK
51	1921319	1	WASHER, Plain, 9/32
52	1921961	1	CAPSCREW, Hex Hd., 1/4-20 x 1-1/4
53	1679207	1	HINGE
54	1673450	6	RIVET, Pop
55	1920283	1	WASHER, Special
56	1960044	1	WASHER, Plain
57	1675795	1	SPACER
58	1704960	1	COVER ASSY., Pulley
59	1679165	1	MOLDING
60	1930627	1	NUT, Hex, Full Lock, #10-32
61	1679204	1	"S" HOOK
62	1679205	1	STRAP
63	1960096	1	WASHER, Special
64	1930531	1	SCREW, Truss, #10-32 x 1/2

Ref. Nos. 1 - 40 are on the preceding page.



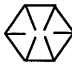
Quad Bagger Dump Cart



NOTE: Unless noted otherwise, use the torque specification chart located on the inside back cover.

REF. NO.	PART NO.	QTY.	DESCRIPTION
1	1708239	1	TAILGATE
2	1919384	4	WASHER, Plain, 7/16 x 1-1/4
3	1911334	4	CARRIAGE BOLT, 5/16-18 x 7/8
4	1700768	1	HANDLE, Lift
5	1976622	2	NUT, Hex, 1/4-20
6	1916964	2	LOCKWASHER, 1/4
7	1921958	2	CAPSCREW, 1/4-20 x 1/2
8	1708238	1	BOX

**TORQUE SPECIFICATIONS FOR
STANDARD MACHINE HARDWARE
(Tolerance \pm 20%)**

SIZE	SAE GRADE #2 		SAE GRADE #5 		SAE GRADE #8 	
	<u>in/lbs</u> ft/lbs	Nm.	<u>in/lbs</u> ft/lbs	Nm.	<u>in/lbs</u> ft/lbs	Nm.
8-32	19	2.1	30	3.4	41	4.6
8-36	20	2.3	31	3.5	43	4.9
10-24	27	3.1	43	4.9	60	6.8
10-32	31	3.5	<u>49</u>	5.5	<u>68</u>	7.7
1/4-20	66	7.6	8	10.9	12	16.3
1/4-28	<u>76</u>	8.6	10	13.6	14	19.0
5/16-18	11	15.0	17	23.1	25	34.0
5/16-24	12	16.3	19	25.8	27	34.0
3/8-16	20	27.2	30	40.8	45	61.2
3/8-24	23	31.3	35	47.6	50	68.0
7/16-14	30	40.8	50	68.0	70	95.2
7/16-20	35	47.6	55	74.8	80	108.8
1/2-13	50	68.0	75	102.0	110	149.6
1/2-20	55	74.8	90	122.4	120	163.2
9/16-12	65	88.4	110	149.6	150	204.0
9/16-18	75	102.0	120	163.2	170	231.2
5/8-11	90	122.4	150	204.0	220	299.2
5/8-18	100	136	180	244.8	240	326.4
3/4-10	160	217.6	260	353.6	386	525
3/4-16	180	244.8	300	408.0	420	571.2
7/8-9	140	190.4	400	544.0	600	816.0
7/8-14	155	210.8	440	598.4	660	897.6
1-8	220	299.2	580	788.8	900	1,244.0
1-12	240	326.4	640	870.4	1,000	1,360.0

NOTES

1. These torque values are to be used for all hardware excluding: locknuts, self-tapping screws, thread forming screws, sheet metal screws and socket head setscrews.
2. Recommended seating torque values for locknuts:
 - a. for prevailing torque locknuts - use 65% of grade 5 torques.
 - b. for flange whizlock nuts and screws - use 135% of grade 5 torques.
3. Unless otherwise noted on assembly drawings, all torque values must meet this specification.



MASSEY FERGUSON
LAWN & GARDEN EQUIPMENT

Massey Ferguson Lawn & Garden Equipment
is Manufactured and Distributed by Simplicity Manufacturing, Inc.
500 N. Spring Street • P.O. Box 997 • Port Washington, Wi. 53074

TP-1407
Printed In USA
©1995 4/95