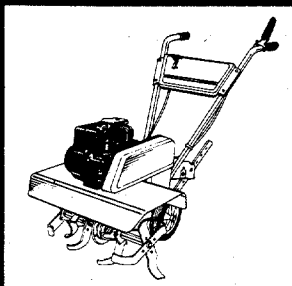


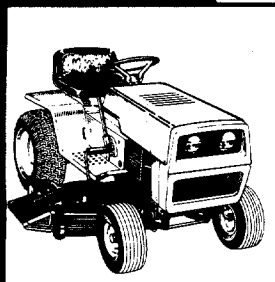
OWNER'S GUIDE

OUTDOOR POWER EQUIPMENT
for all seasons

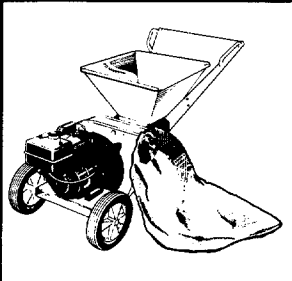
Spring



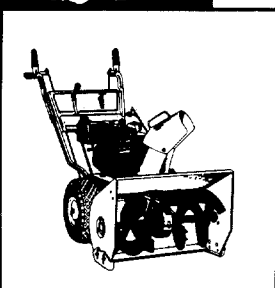
Summer



Fall



Winter



700 SERIES TRANSMATIC LAWN TRACTORS

Model Numbers

136-700-000
136-701-000
136-702-000
136-703-000
136-704-000
136-705-000
136-706-000

38" S.D. 196-805
40 R.D. 196-804
44 S.D. 190-803

Important:

**Read Safety Rules and
Instructions Carefully**

Thank you for purchasing
an American-built product.

INDEX

Safe Operation Practices	3	Off-Season Storage	17
Assembly Instructions	4	Trouble Shooting Chart	18, 19
Controls	8	Illustrated Parts for Rider	20-33
Operation	9	Electrical System	29
Adjustments	11	Illustrated Parts for Transaxle	34, 35
Lubrication	13	Parts Information	Back Cover
Maintenance	14		



Instructions given with this symbol are for personal safety. Be sure to follow them.

LIMITED WARRANTY

For one year from the date of original retail purchase, MTD PRODUCTS INC will either repair or replace, at its option, free of charge, F.O.B. factory or authorized service firm, any part or parts found to be defective in material or workmanship. Transportation charges for the movement of any power equipment unit or attachment are the responsibility of the purchaser. Transportation charges for any parts submitted for replacement under this warranty must be paid by the purchaser unless such return is requested by MTD PRODUCTS INC.

This warranty will not apply to any part which has become inoperative due to misuse, excessive use, accident, neglect, improper maintenance, alterations, or unless the unit has been operated and maintained in accordance with the instructions furnished. This warranty does not apply to the engine, motor, battery, battery charger or component parts thereof. Please refer to the applicable manufacturer's warranty on these items.

This warranty will not apply where the unit has been used commercially.

Warranty service is available through your local authorized service dealer or distributor. If you do not know the dealer or distributor in your area, please write to the Customer Service Department of MTD.

The return of a complete unit will not be accepted by the factory unless prior written permission has been extended by MTD.

This warranty gives you specific legal rights. You may also have other rights which vary from state to state.



WARNING

This unit is equipped with an internal combustion engine and should not be used on or near any unimproved forest-covered, brush-covered or grass-covered land unless the engine's exhaust system is equipped with a spark arrester meeting applicable local or state laws (if any). If a spark arrester is used, it should be maintained in effective working order by the operator.

In the State of California the above is required by law (Section 4442 of the California Public Resources Code). Other states may have similar laws. Federal laws apply on federal lands. A spark arrester muffler is available at your nearest engine authorized service center.



WARNING

To reduce the potential for any injury, comply with the following safety instructions. Failure to comply with the instructions may result in personal injury.

SAFE OPERATION PRACTICES FOR RIDING VEHICLES

1. Read this owner's manual carefully in its entirety before attempting to assemble or operate this unit. Keep this manual in a safe place for future and regular reference and for ordering replacement parts.
2. This unit is a precision piece of power equipment, not a plaything. Therefore exercise extreme caution at all times.
3. Know the controls and how to stop quickly—READ THIS OWNER'S MANUAL.
4. Do not allow children to operate vehicle. Do not allow adults to operate it without proper instruction. Only persons well acquainted with these rules of safe operation should be allowed to use your mower.
5. No one should operate this unit while intoxicated or while taking medication that impairs the senses or reactions.
6. Wear sturdy, rough-soled work shoes and close-fitting slacks and shirts to avoid entanglement in the moving parts. Never operate a unit in bare feet, sandals, or sneakers.
7. To prevent injury, do not carry passengers or give rides. Keep children, pets and bystanders out of the area while mowing. Only the operator should ride on the unit and only ride in the seat.
8. Check overhead clearance carefully before driving under power lines, guy wires, bridges or low hanging tree branches, before entering or leaving buildings, or in any other situation where the operator may be struck or pulled from the unit, which could result in serious injury.
9. To maintain control of the unit and reduce the possibility of upset or collision, operate the tractor smoothly. Avoid erratic operation and excessive speed.
10. Keep the area of operation clear of all persons, particularly small children and pets. Stop engine when they are in the vicinity of your mower. Although the area of operation should be completely cleared of foreign objects, a small object may have been overlooked and could be accidentally thrown by the mower in any direction and cause injury.
11. Clear work area of objects which might be picked up and thrown by the mower in any direction and cause injury.
12. Stop the blade(s) when crossing gravel drives, walks or roads.
13. Disengage all attachment clutches and shift into neutral before attempting to start engine.
14. Disengage power to attachment(s) and stop engine before leaving operating position.
15. Do not put hands or feet near or under rotating parts. Keep clear of the discharge opening at all times as the rotating blade(s) can cause injury.
16. Disengage power to attachment(s) and stop engine before making any repairs or adjustments. Disconnect the spark plug wire and keep the wire away from the plug to prevent accidental starting.
17. Before attempting to unclog the mower or discharge chute, stop the engine. The mower blade(s) may continue to rotate for a few seconds after the engine is shut off. Therefore, be sure the blade(s) have stopped completely. Disconnect the spark plug wire and keep the wire away from the plug to prevent accidental starting.
18. Disengage power to attachment(s) when transporting or not in use.
19. Take all possible precautions when leaving vehicle unattended such as disengaging power-take-off, lowering attachments, shifting into neutral, setting parking brake, stopping engine and removing key.
20. Do not stop or start suddenly when going uphill or downhill. Mow up and down face of steep slopes; never across the face. Use extreme caution if it is necessary to drive the tractor up an incline or back the tractor down an incline because the front of the tractor could lift and rapidly flip over backward which could cause serious injury.
21. Reduce speed on slopes and in sharp turns to prevent tipping or loss of control. Always keep the tractor in gear when going down steep hills to take advantage of engine braking action.
22. Stay alert for holes in terrain and other hidden hazards.
23. Use care when pulling loads or using heavy equipment.
 - A. Use only approved drawbar hitch points.
 - B. Limit loads to those you can safely control.
 - C. Do not turn sharply. Use care when backing.
 - D. Use counterweight(s) or wheel weights when suggested in owner's manual.
24. Watch out for traffic when crossing or near roadways.
25. When using any attachments, never direct discharge of material toward bystanders nor allow anyone near vehicle while in operation.
26. Handle gasoline with care. It is highly flammable.
 - A. Use approved gasoline container.
 - B. Never remove cap or add gasoline to a running or hot engine or fill fuel tank indoors. Wipe up spilled gasoline.
 - C. Open doors if engine is run in garage. Exhaust fumes are dangerous. Do not run engine indoors.

27. Keep the vehicle and attachments in good operating condition, and keep safety devices in place. Use guards as instructed in operator's manual.
28. Keep all nuts, bolts, and screws tight to be sure the equipment is in safe working condition.
29. Never store the machine with fuel in the fuel tank inside a building where ignition sources are present, such as hot water and space heaters, clothes dryers, and the like. Allow the engine to cool before storing in any enclosure.
30. To reduce fire hazard, keep engine free of grass, leaves or excessive grease.
31. The vehicle and attachments should be stopped and inspected for damage after striking a foreign object. The damage should be repaired before restarting and operating the equipment.
32. Do not change the engine governor settings or overspeed the engine.
33. When using the vehicle with mower, proceed as follows:

- (1) Mow only in daylight or in good artificial light.
- (2) Never make a cutting height adjustment while engine is running if operator must dismount to do so.
- (3) Shut the engine off and wait until the blade comes to a complete stop before removing the grass catcher.
- (4) Check blade mounting bolts for proper tightness at frequent intervals.
34. Check grass catcher bags frequently for wear or deterioration. For safety protection, replace only with new bag meeting original equipment specifications.
35. Look behind to make sure the area is clear before placing the transmission in reverse and continue looking behind while backing up. Disengage blades before shifting into reverse and backing up.
36. This unit should not be driven up a ramp onto a trailer or truck under power, because the unit could tip over, causing serious personal injury. The unit must be pushed manually to load properly.



This unit is shipped WITHOUT GASOLINE or OIL. After assembly, see separate engine manual for proper fuel and engine oil recommendations.

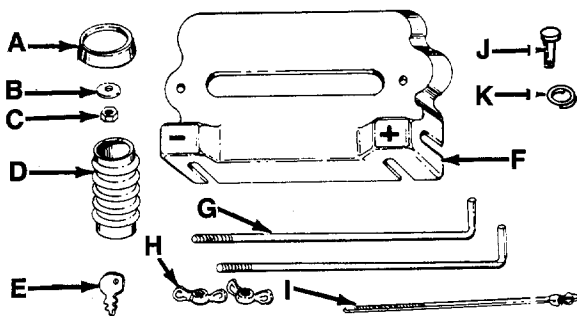


FIGURE 1.

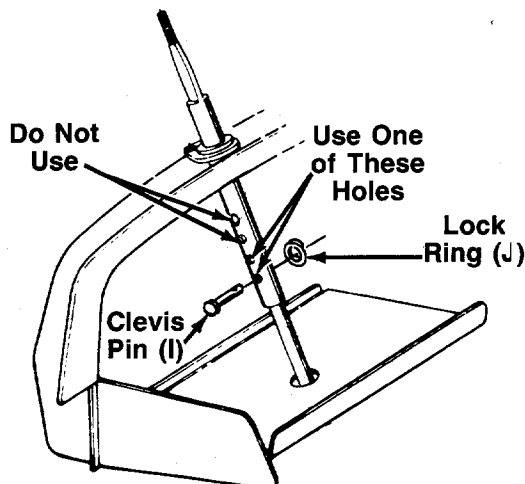


FIGURE 2.—Models 704 and 714 Shown

ASSEMBLY

This owner's manual covers various models of lawn tractors. The units illustrated may vary slightly from your unit. Follow the instructions which pertain to your unit. Refer to the separate deck manual for all information concerning the deck.

Contents of Hardware Pack:

(See Figure 1)

- A (1) Steering Wheel Cap
- B (1) Belleville Washer
- C (1) Hex Nut 5/16-18 or 5/16-24 Thread
- D (1) Steering Bellows
- E (2) Ignition Keys
- F (1) Battery Cover
- G (2) Battery Hold-Down Rods
- H (2) Wing Nuts
- I (1) Cable Tie
- J (1) Clevis Pin 1" Long
- K (1) Lock Ring

Hardware for Mounting the Seat (Not Shown)
(2) Hex Bolts and Lock Washers

Loose Parts in Carton:

- (1) Battery Pack
- (1) Steering Wheel
- (1) Seat
- (1) Deck

STEERING WHEEL INSTALLATION

1. For shipping purposes, the upper steering shaft is pushed all the way down over the lower steering shaft. Pull the upper steering shaft up. The holes in the shaft provide steering wheel height adjustment. When securing the two halves of the steering shaft, select one of the two lower holes in the upper shaft as shown. **Do not** use the two upper holes. Secure with clevis pin (I) and lock ring (K). See figure 2.

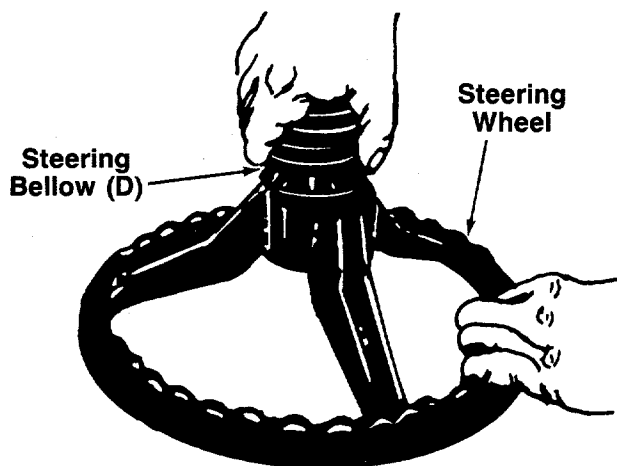


FIGURE 3.

2. Attach steering bellow (D) to the steering wheel as shown in figure 3.

NOTE

One end of the steering bellow is slightly larger than the other. The larger end must be assembled to the steering wheel.

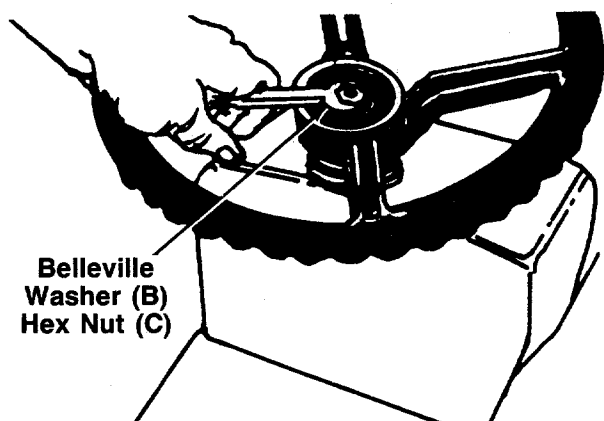


FIGURE 4.

3. Make certain the front wheels of the lawn tractor are pointing straight.
4. Place steering wheel in position desired, and attach steering wheel and bellow to the steering shaft.

NOTE

On units which have flats on the steering wheel and shaft, line up the flats in the wheel with the flats on the shaft.

5. Secure with belleville washer (B) (cupped side against the steering wheel) and hex nut (C). See figure 4.
6. Position the steering wheel cap (A) as desired and press it onto the steering wheel by hand.

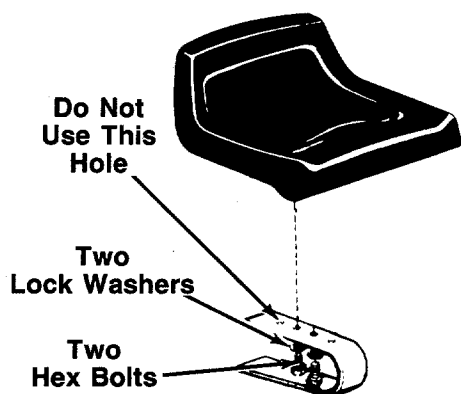


FIGURE 5.

SEAT INSTALLATION

- The seat may be adjusted to two different positions. Select desired position and secure to seat spring with two hex bolts and lock washers. See figure 5.

IMPORTANT

Do not use the last hole in the seat spring as shown in figure 5 to avoid interfering with the fuel tank.

BATTERY INFORMATION



WARNING

- A. Battery acid must be handled with great care as contact with it can burn and blister the skin. It is also advisable to wear protective clothing (goggles, rubber gloves and apron) when working with it.*
- B. Should battery acid accidentally splatter into the eyes or onto the face, rinse the affected area immediately with clean, cold water. If there is any further discomfort, seek prompt medical attention.
- C. If acid spills on clothing, first dilute it with clean water, then neutralize with a solution of ammonia/water or baking soda/water.
- D. Since battery acid is corrosive, do not pour it into any sink or drain. Before discarding empty electrolyte containers, rinse them with a neutralizing solution.
- E. NEVER connect or disconnect charger clips to battery while charger is turned on as it can cause sparks.
- F. Keep all lighted materials (cigarettes, matches, lighters) away from the battery as the hydrogen gas generated during charging can be combustible.
- G. As a further precaution, only charge the battery in a well-ventilated area.

***Always shield eyes, protect skin and clothing when working near batteries.**



DANGER

Battery contains sulfuric acid. Refer to warning above. Antidote: EXTERNAL—Flush with water. INTERNAL—Drink large quantities of water or milk. Follow with milk of magnesia, beaten egg or vegetable oil. Seek prompt medical attention. EYES: Flush with cool water for at least 15 minutes, then seek immediate medical attention.

Since batteries produce explosive gases, keep all lighted materials (cigarettes, lighters, matches, etc.) away. Be sure to charge battery only in well-ventilated areas.

**KEEP BATTERIES
OUT OF THE REACH OF CHILDREN!**

ACTIVATING THE BATTERY

1. Place the battery to be filled on a workbench. Never activate a battery in the unit.

2. Slip one end of battery drain tube on the battery manifold.
3. Remove the fill caps from all cells.
4. Fill each cell carefully using 1.265 specific gravity electrolyte. Fill each cell to the top of the separators. Do not overfill.
5. Let the battery sit for 20 minutes to allow the chemical reaction to take place.
6. Charge the battery at a MAXIMUM RATE OF 5 AMPS, until the specific gravity reads 1.265. Use a hydrometer to check the specific gravity.



NOTE

An excessive rate of charge will damage the battery.

7. Check the level of electrolyte. Adjust level to bottom of split ring if necessary with electrolyte.
8. Replace fill caps.



NOTE

Charging rate after battery has been put into operation: The battery is to be charged for a period of 14-16 hours. NO LONGER THAN 30 HOURS.

After battery has been in service, add only distilled water. Do not add acid.



NOTE

This engine is equipped with an alternator. The current for the battery charger alternator is unregulated. During normal operation, it is only necessary to charge the battery:

1. When it is activated for the first time.
2. Before winter storage.
3. Before using the lawn tractor after winter storage.

INSTALLING THE BATTERY

1. Open the hood of the lawn tractor by lifting up on both sides of the hood.

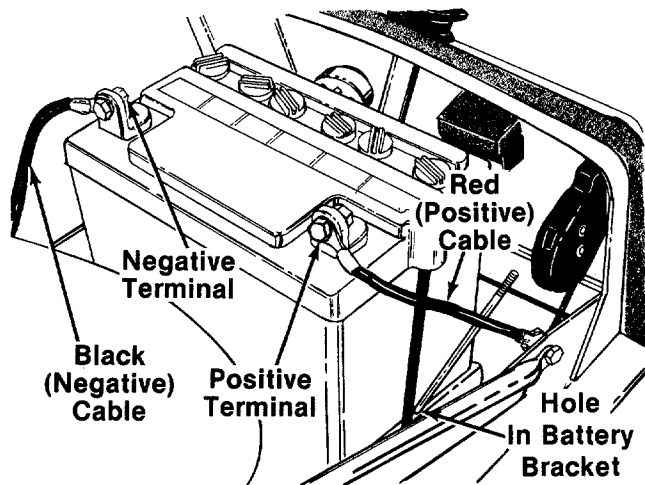


FIGURE 6.

2. Place the battery in the lawn tractor so that the positive terminal is facing the left side of the unit.
See figure 6.



Right and left hand sides of the unit are determined from the operating position, facing forward.

3. Slide the square nut (provided with battery hardware) into the positive (+) terminal. Place the positive (heavy red wire) cable on the positive terminal. Secure with screw provided. See figure 6.
4. Slide the square nut (provided with battery hardware) into the negative (-) terminal. Place the negative (heavy black wire) cable on the negative terminal. Secure with screw provided.

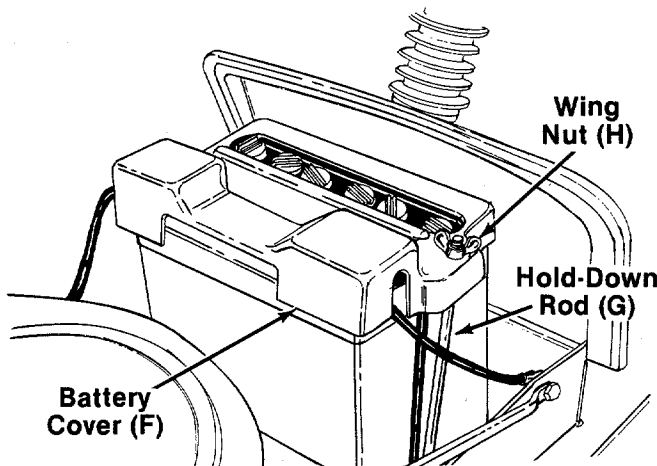


FIGURE 7.

5. Hook one hold-down rod (G) into the hole in the edge of the battery bracket beside the battery. See figure 6. Place the battery cover (F) in position over the hold-down rod. Secure with wing nut (H). Attach other hold-down rod to the other side of battery cover in the same manner. See figure 7.

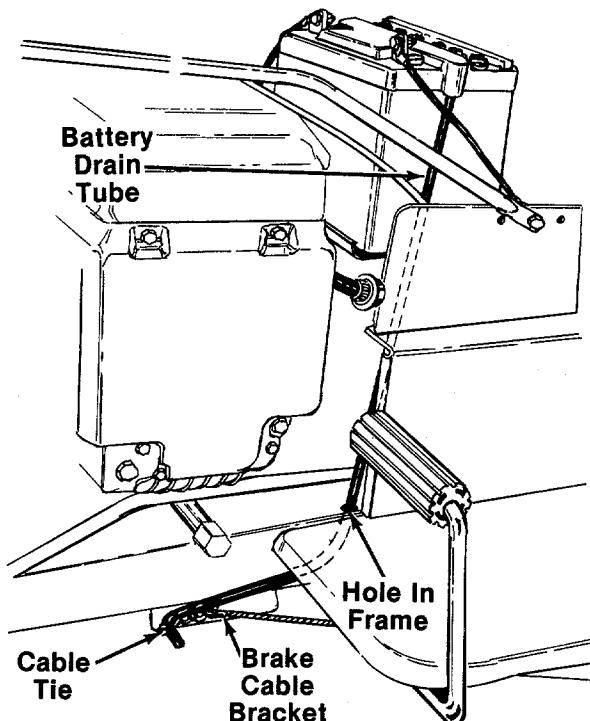


FIGURE 8.

6. Route the battery drain tube down through the hole in the frame, then forward to the brake cable bracket. See figure 8.
7. Secure drain tube to brake cable bracket with cable tie (H) as shown in figure 8. Cut off excess end of cable tie.

CONTROLS

THROTTLE CONTROL

The throttle control is used to regulate the engine speed. To get maximum efficiency from cutting, the throttle should be in the FAST position when operating the mower. See figure 9.

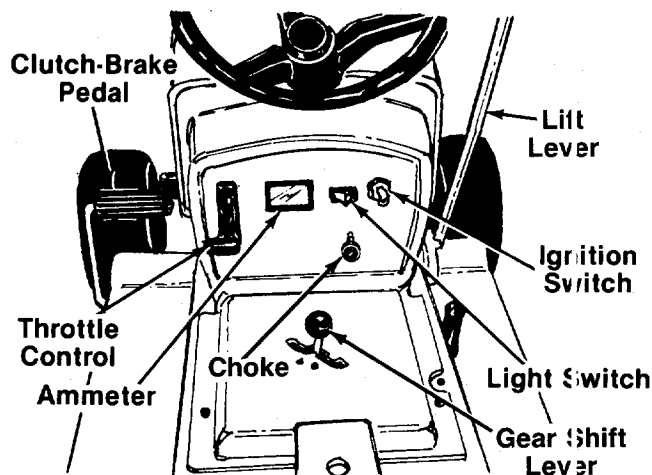


FIGURE 9.—Models 704 and 714 Shown

CHOKE CONTROL

The choke control is located on the dashboard and is operated manually. Details for the choke operation are covered in the separate engine manual packed with your unit. See figure 9.

GEAR SHIFT LEVER

The shift lever is located on the left side of the console and has three positions, FORWARD, NEUTRAL and REVERSE. See figure 9. The clutch-brake pedal must be depressed and the lawn tractor must not be moving when shifting gears. Do not force the shift lever. Release the clutch-brake pedal slightly to line up the shifting collar in the transmission. Then try to shift gears.

SPEED CONTROL LEVER

The speed control lever is located on the right fender. It allows you to regulate the ground speed of the lawn tractor. See figure 10. To select the ground speed, depress clutch pedal. Push speed control lever outward and move backward to slow lawn tractor, move forward to increase speed. When desired speed has been obtained, release lever in that position. Whenever clutch is engaged, unit will automatically go to the pre-set speed.

IGNITION SWITCH

Turn the key to the START position to start the engine. When the engine is running, let the key return to the

ON position. To stop the engine, turn the key to the left to the OFF position and remove it to prevent accidental starting. See figure 9.

LIGHT SWITCH

Push the light switch to turn on the lights. The lights will only operate when the engine is running. See figure 9.

AMMETER

The ammeter registers the rate of battery charge or discharge. The ammeter will register on the discharging side when starting the engine. It should register on the opposite side (charging) when the engine is running in the fast position until the battery is completely charged. With a fully charged battery or with the engine idling, the ammeter will not show a charge. See figure 9.

CLUTCH-BRAKE PEDAL

The clutch-brake pedal is located on the left side of the lawn tractor. Depressing the clutch-brake pedal part way disengages the clutch. Pressing the pedal all the way down disengages the clutch and engages the disc brake. See figure 9.



NOTE

The clutch-brake pedal must be depressed to start the engine.

PARKING BRAKE

The speed control lever is used to set the parking brake. To set the parking brake, depress the clutch-brake pedal. Press the speed control lever outward and all the way to the rear of the unit. Release the speed control lever and the clutch-brake pedal.

To release the parking brake, depress the clutch-brake pedal, press the speed control lever outward and move to desired position. Release the speed control lever and the clutch-brake pedal.

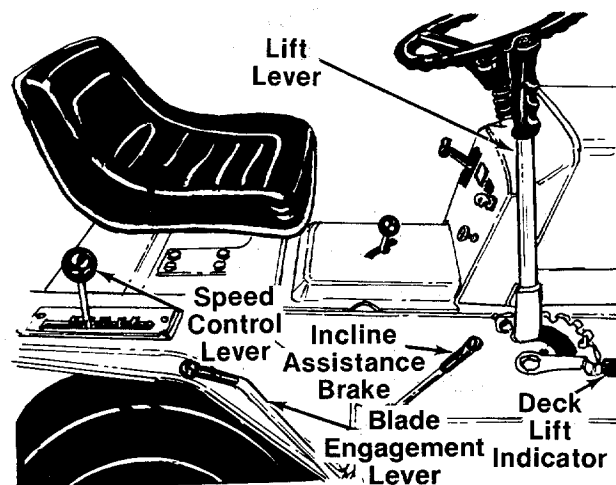


FIGURE 10.

INCLINE ASSISTANCE BRAKE

When stopping on a hill, hold the incline assistance brake lever back while you release the clutch-brake pedal until the lawn tractor begins to move, then release the lever. This lever permits smoother starts and clutch engagement by holding the tractor during the brake release/clutch engagement operation. See figure 10.

INTERLOCKS (Not Shown)

Interlock safety switches are located on the clutch-brake pedal, the blade engagement lever and gear shift lever.

Before the engine will start, the clutch-brake pedal must be depressed all the way and the blade engagement lever must be in the disengaged position.

Before the unit can be shifted into reverse, the blade engagement lever must be in the disengaged position.

LIFT LEVER

The lift lever is located on the right side of the unit. It is used to raise and lower the cutting deck and other attachments. Move the lever to the right, then forward or backward to the desired position and release. See figure 10.



NOTE

When using the snow thrower attachment, the lift lever is also used to engage and disengage the spirals.

DECK LIFT INDICATOR

The deck lift indicator marks the position being used for the lift lever. Select the lift lever position desired, press the indicator lever outward, move it to the position immediately below the lift lever and release the indicator lever. See figure 10.

BLADE ENGAGEMENT LEVER

The blade engagement lever is located beside the right fender. Move the lever forward to engage the blades. Move it toward the rear of the unit to stop the blades from turning.

The blade engagement lever must be in the disengaged position before the engine can be started.

WHEEL ADJUSTER

Move the lever towards the wheel and set it in the desired position. See figure 11.

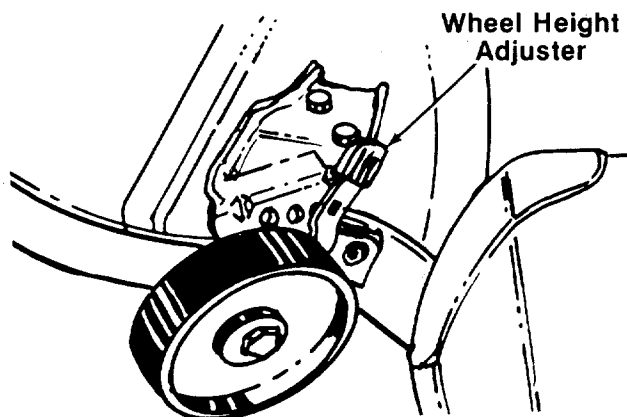


FIGURE 11.

SETTING THE CUTTING HEIGHT

1. Select the position for the lift lever which gives the desired cutting height. Move the deck lift indicator so that the lift lever can be returned to the same position after it is raised.
2. Set the wheel height adjusters on the deck so that the wheels are $\frac{1}{4}$ to $\frac{1}{2}$ inch above the ground.

OPERATION



CAUTION

1. Keep all shields in place.
2. Before leaving operator's position:
 - a. Shift transmission to neutral
 - b. Set parking brake
 - c. Disengage attachment clutch
 - d. Shut off engine
 - e. Remove ignition key
3. Wait for all movement to stop before servicing machine.
4. Keep people and pets a safe distance away from machine.
5. Look to the rear before backing up.

TIRE PRESSURE

For shipping purposes, the tires on your unit may be over-inflated. Tire pressure should be reduced before unit is put into operation. Recommended operating tire pressure should be 10 p.s.i.

Check sidewall of tire for manufacturer's maximum tire pressure. If this information does not appear on your tire, maximum tire pressure under any circumstances is 30 p.s.i. Equal tire pressure should be maintained on all tires.

STARTING THE ENGINE



NOTE

To open the hood, simply lift up on both sides of the hood.

1. Service the engine with oil and gasoline as described in the engine manual.
2. Depress the clutch-brake pedal and set the parking brake.
3. Place the blade engagement lever in the DISENGAGED position. See figure 10.



NOTE

This unit is equipped with a safety interlock system for your protection. The purpose of the safety interlock system is to prevent the engine from cranking or starting unless the clutch-brake pedal is depressed and the blade engagement lever is in the disengaged position. In addition, the blade engagement lever must be in the disengaged position when the unit is put into reverse or the engine will shut off.



WARNING

Do not operate the lawn tractor if the interlock system is malfunctioning because it is a safety device, designed for protection.

4. Set the throttle control in the FAST position. See figure 9.
5. Pull choke knob to choke engine.



NOTE

A warm engine may not require choking.

6. Turn the ignition key to the START position. When the engine is running, let the key return to the ON position. See figure 9.
7. Push choke knob in gradually. Move the throttle control to desired engine speed.

STOPPING THE ENGINE

Turn the ignition key to the left to the OFF position. Remove the key to prevent accidental starting.



NOTE

A brief break-in period is essential to ensure maximum engine and mower life. The break-in consists of running the engine at half speed for a period of time required to use one tank of gasoline. It is also recommended to change crankcase oil after the first 5 hours of operation.

Be sure that the lawn is clear of stones, sticks, wire, or other objects which could damage lawn tractor or engine. For best results and to insure more even grass distribution, do not mow when lawn is excessively wet.



IMPORTANT

If you strike a foreign object, stop the engine. Remove wire from spark plug, thoroughly inspect the unit for any damage, and repair the damage before restarting and operating the mower.

OPERATING THE LAWN TRACTOR

1. Set the desired cutting height.
2. Start the engine as instructed in previous column.
3. Move throttle control to $\frac{3}{4}$ or full throttle to prevent strain on the engine and to operate the cutting blades.
4. Place the shift lever in either the FORWARD or REVERSE position.



CAUTION

Look to the rear before backing up.

5. Release the parking brake by depressing the clutch-brake pedal, pressing outward on the speed control lever and moving to desired position.



NOTE

Use first speed position when operating the lawn tractor for the first time.

6. Release clutch-brake pedal slowly to put unit into motion.
7. The lawn tractor is brought to a stop by depressing the clutch-brake pedal.



CAUTION

If the unit is not to be used for a long period, place the gear shift lever in NEUTRAL, stop the engine, set the parking brake and remove the key. DO NOT leave the machine on an incline.

If unit stalls with speed control in high speed, or if unit will not operate with speed control lever in a low speed position, proceed as follows.

1. Place shift lever in NEUTRAL.
2. Restart engine.

3. Place speed control lever in high speed position.
4. Release clutch-brake pedal fully.
5. Depress clutch-brake pedal.
6. Place speed control lever in desired position.
7. Place shift lever in either FORWARD or REVERSE, and follow normal operating procedures.

OPERATING THE CUTTING BLADES

The cutting blades may be engaged while the lawn tractor is moving or standing still. DO NOT engage the cutting blades abruptly as the sudden belt tension on the pulley may cause the engine to stall.



WARNING

When the blade drive is engaged, keep feet and hands away from the discharge opening, the blades or any part of the deck.

Move the blade engagement lever into the DISENGAGED position to disengage the blades.



NOTE

When the machine is used for other than mowing operations, the blade drive should be disengaged.

GRASS CATCHER Model 015 is available as optional equipment for the lawn tractor with a 44" side discharge deck.



WARNING

The mower should not be operated without the entire grass catcher or chute deflector in place.



NOTE

Under normal usage bag material is subject to wear, and should be checked periodically. Be sure any replacement bag complies with the mower manufacturer's recommendations.

For replacement bags, use only factory authorized replacement bag.

ADJUSTMENTS

SEAT ADJUSTMENT

The seat may be adjusted to one of two positions. Refer to seat installation section of assembly instructions.



IMPORTANT

Do not use the last hole in the seat spring to avoid interfering with the fuel tank.

STEERING WHEEL ADJUSTMENT

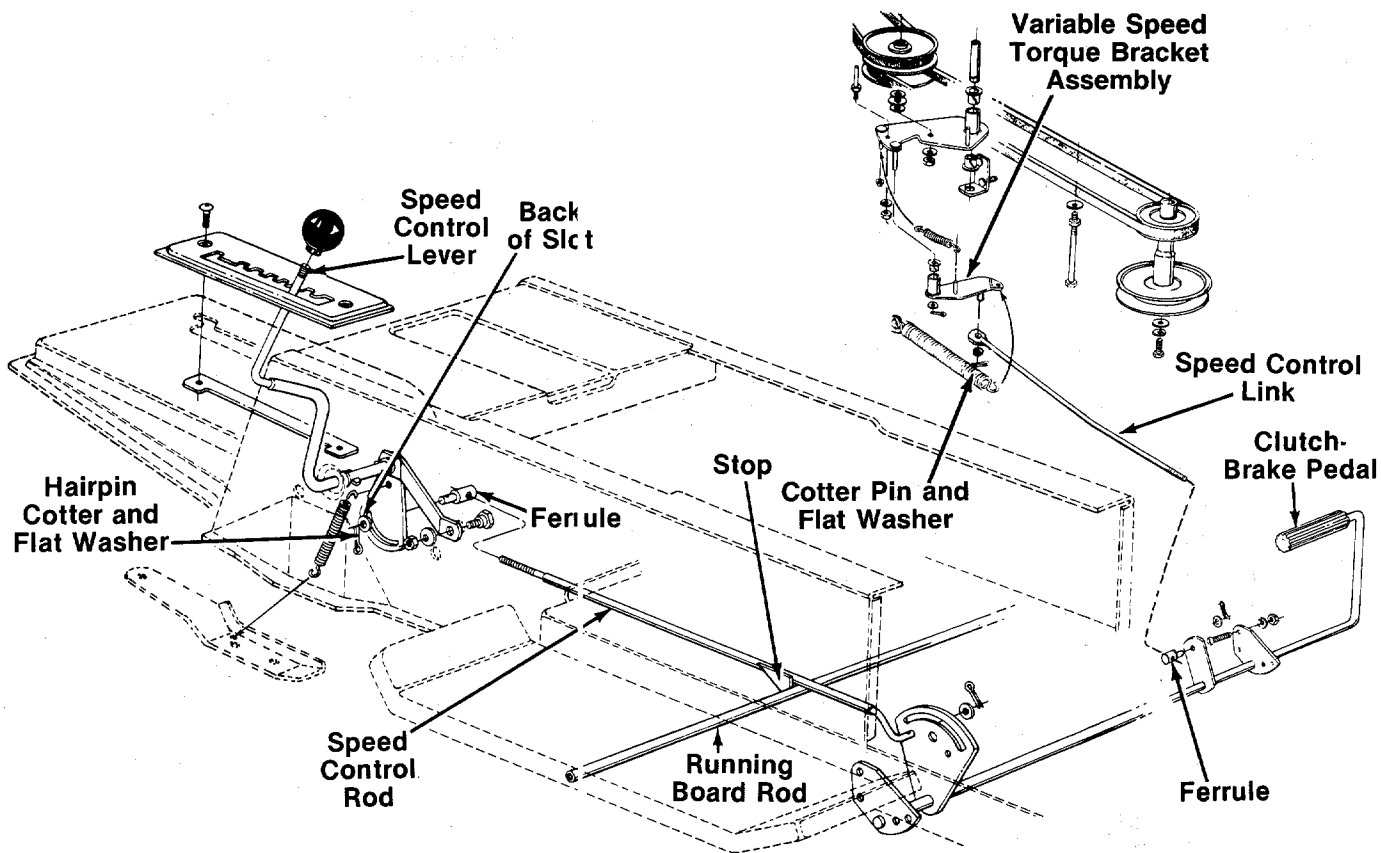
There are two height positions for the steering wheel. To adjust the height of the steering wheel, remove the lock ring and clevis pin on the steering shaft. Place the steering wheel in the position desired and secure with lock ring and clevis pin. Refer to figure 2.

SPEED CONTROL ADJUSTMENT (See figure 12)

First, adjust the speed control lever by pushing the clutch-brake pedal forward until the stop on the speed control rod is against the running board rod. See figure 12. Have another person hold the pedal in this position as you make the following adjustment. Place the speed control lever in parking brake position. Remove the hairpin cotter and flat washer, and adjust the ferrule on the rod so it is against the back end of the slot. See figure 12. Replace the flat washer and hairpin cotter.

Next, adjust the speed control link as follows to obtain the correct neutral adjustment.

1. Start the engine.
2. Place the shift lever in NEUTRAL position.
3. Place the speed control lever in high speed position.
4. Release the clutch-brake pedal completely, then slowly depress the pedal all the way (to park position). Hold the pedal in this position.
5. Turn the engine off.
6. After engine stops completely, release the clutch-brake pedal.
7. Position speed control lever as follows.
 - A. 7-speed units—Place speed control lever in second position.
 - B. 6-speed units—Place speed control lever between first and second position (hold in this position).
 - C. 4 and 5-speed units—Place speed control lever in first position.
8. Remove the cotter pin and flat washer which secures the speed control link to the variable speed torque bracket assembly.
9. Push the clutch-brake pedal backward by hand as far as it will go using light pressure. Hold it in this position as you thread the speed control link in or out of the ferrule until it lines up with the pin on the variable speed torque bracket assembly.
10. Secure speed control link to variable speed torque bracket assembly with flat washer and cotter pin.



NEUTRAL ADJUSTMENT

1. Place the transmission in neutral. (The unit will move freely when pushed forward and backward with the parking brake released).
2. Loosen the bolt which secures the shift lever assembly to the shift lever link. See figure 13.
3. Place the shift lever in the neutral slot. See figure 13.
4. Tighten the bolt to 13 foot pounds.

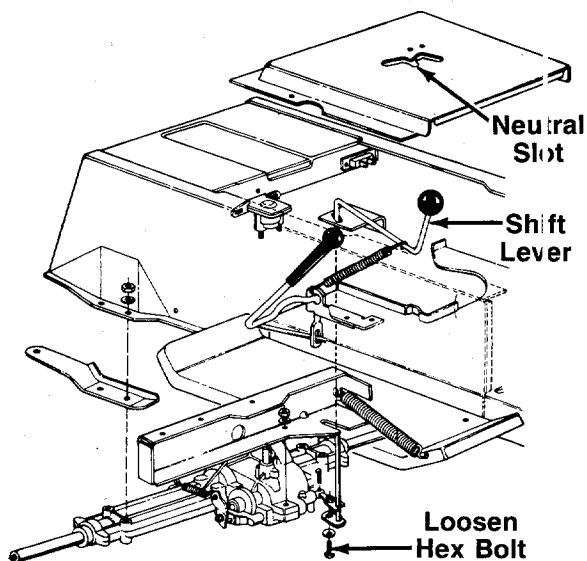


FIGURE 13.

WHEEL ADJUSTMENT

The caster (forward slant of the king pin) and the camber (tilt of the wheels out at the top) require no adjustment. Automotive steering principles have been used to determine the caster and camber on the tractor. The front wheels should toe-in 1/8 inch.

To adjust the toe-in, follow these steps.

1. Remove the hex nut and lock washer, and drop the tie rod end from the wheel bracket. See figure 14.
2. Loosen the hex jam nut on tie rod.
3. Adjust the tie rod assembly for correct toe-in.

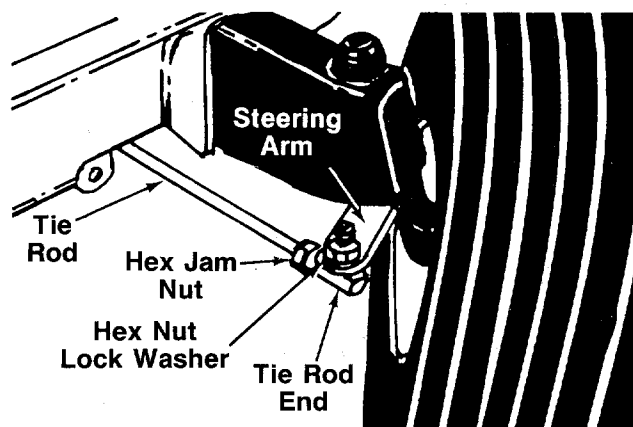


FIGURE 14.

Dimension "B" should be approximately 1/8" less than Dimension "A." See figure 15.

- A.) To increase Dimension "B," screw tie rod into tie rod end.
- B.) To decrease Dimension "B," unscrew tie rod from tie rod end.
- C.) Reassemble tie rod. Check dimensions. Readjust if necessary.

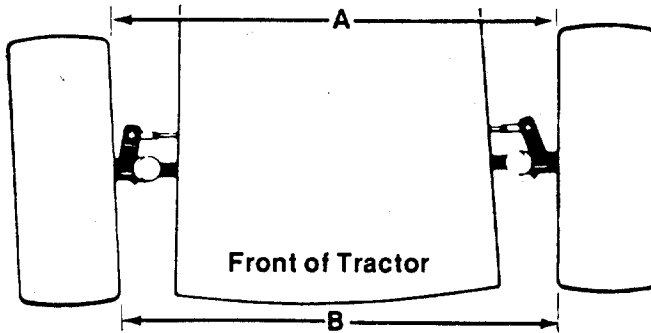


FIGURE 15. TOE-IN DIAGRAM

CARBURETOR ADJUSTMENT



WARNING

If any adjustments are made to the engine while the engine is running (e.g. carburetor), disengage all clutches, and blades. Keep clear of all moving parts. Be careful of heated surfaces and muffler.

Minor carburetor adjustment may be required to compensate for differences in fuel, temperature, altitude and load. To adjust the carburetor, refer to the separate engine manual packed with your unit.

BRAKE ADJUSTMENT (See figure 16)

The brake is located by the right rear wheel inside the frame. During normal operation of this machine, the brake is subject to wear and will require periodic examination and adjustment.



CAUTION

Do not have the engine running when you adjust the brake.

To adjust the brake, remove the cotter pin. Adjust the castle nut so the brake starts to engage when the brake lever is 1/4" to 5/16" away from the axle housing.



NOTE

Figure 16 is shown with the unit tipped up on rear wheels for clarity only.

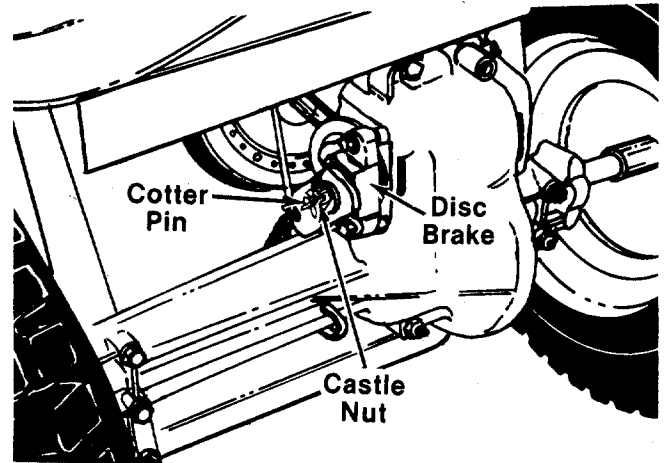


FIGURE 16.

DECK ADJUSTMENT LINK (44" Decks Only)

If an uneven cut is obtained, the deck may be adjusted. An adjustable lift link assembly is located on the right side of the unit. Refer to Ref. Nos. 20, 21 and 22 on page 30.

To adjust the deck, loosen the two hex nuts on the adjustable link lift assembly. Thread the hex nuts up or down the adjustable link lift assembly as necessary. Retighten the hex nuts.

LUBRICATION



WARNING

Always stop engine and disconnect spark plug wire before cleaning, lubricating or doing any kind of work on lawn tractor.

STEERING GEARS

Lubricate teeth of steering gears with automotive multi-purpose grease after every 25 hours of operation or once a season. See figure 17.

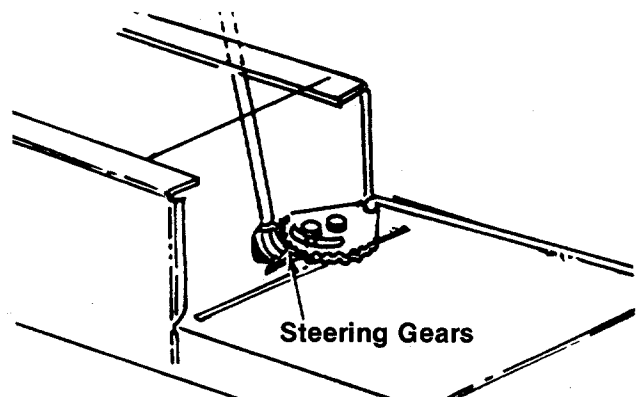


FIGURE 17.

STEERING SHAFT

Lubricate steering shaft at least once a season with light oil.

TRANSAXLE

The transaxle is lubricated and sealed at the factory and does not require checking. If disassembled for any reason, lubricate with 10 oz. of grease, part number 737-0148.

FRONT WHEELS

The front wheels are provided with grease fittings. Lubricate at least once a season with automotive multi-purpose grease.

PIVOT POINTS

Lubricate all pivot points with light oil at least once a season.

MAINTENANCE



Disconnect the spark plug wire and ground against the engine before performing any repairs or maintenance.

CRANKCASE OIL

Check the oil level in the crankcase before each use of the machine and after every five hours of operation. Oil level should be maintained as instructed in the separate engine manual.

After the first five hours of operating a new engine drain the oil from the crankcase while engine is still hot and refill crankcase with new oil; thereafter change the oil every 25 hours of operation. Refer to the engine manual.

AIR CLEANER

Under normal operating conditions, the air cleaner, located on top of the carburetor, must be serviced after every ten hours of use. Under extremely dusty operating conditions, the air cleaner must be serviced after every hour of operation. To service the air cleaner, refer to the separate engine manual packed with your unit.

CLEANING ENGINE AND BLADE HOUSING

Any fuel or oil spilled on the machine should be wiped off promptly. Grass, leaves, and other dirt must not be left to accumulate around the cooling fins of the engine or on any part of the machine.

Clean the underside of the blade housing after each mowing.

SPARK PLUG

The spark plug should be cleaned and the gap reset once a season. Spark plug replacement is recommended at the start of each mowing season; check engine manual for correct plug type and gap specification.

CUTTING BLADES

A. Removal for Sharpening or Replacement



Be sure to disconnect and ground the spark plug wire and remove ignition key before working on the cutting blades to prevent accidental engine starting. Protect hands by using heavy gloves or a rag to grasp the cutting blades.

1. Remove the large bolt and lock washer which holds the blade and adapter to the blade spindle.
2. Remove the blade and adapter from the spindle. Be careful not to lose the key on the spindle.
3. If the blade or blade adapter needs replacing, remove the two small bolts, lock washers and nuts which hold the blade to the adapter.

B. Sharpening

Remove the cutting blade by following the directions of the preceding section.

When sharpening the blade, follow the original angle of grind as a guide. It is **extremely important** that each cutting edge receives an equal amount of grinding to prevent an unbalanced blade. An unbalanced blade will cause excessive vibration when rotating at high speeds, may cause damage to the mower and could break, causing personal injury.

The blade can be tested for balance by balancing it on a round shaft screwdriver. Remove metal from the heavy side until it balances evenly.



It is recommended that the blade always be removed from the adapter for the best test of balance.

C. Reassembly

Before reassembling the blade and the blade adapter to the unit, lubricate the spindle and the inner surface of the blade adapter with light oil. Lubricating the bolt holes, bolts and inner surface of the nuts with light oil is also recommended. A 4 oz. plastic bottle of light oil lubricant is available. Order part number 737-0170. Engine oil may also be used.

When replacing the blade, be sure to install the blade with the side of the blade marked "Bottom" (or with part number) facing the ground when the mower is in the operating position. Make certain key is in place on the blade spindles.

Blade Mounting Torque

3/8" Dia. Bolt 375 in. lb. min., 450 in. lb. max.

5/16" Dia. Bolt 150 in. lb. min., 250 in. lb. max.

To insure safe operation of your unit, ALL nuts and bolts must be checked periodically for correct tightness.

Blade Spindle Nuts

If disassembled for any reason, tighten the blade spindle nuts for the 22" blades to between 80 and 100 foot pounds. Tighten the blade spindle nut for the smaller center blade to between 40 and 45 foot pounds.

FUEL FILTER

Your unit is equipped with a replaceable in-line fuel filter. Replace filter whenever contamination or discoloration is noticed. Order replacement filter through your engine authorized service dealer.

BELT REMOVAL AND REPLACEMENT



WARNING

Disconnect the spark plug wire and ground it against the engine. Block the wheels of the unit.



NOTE

Figures 19 through 21 are shown with the unit tipped up for clarity. It is not necessary to tip the unit to remove the belts.

Rear Drive Belt

1. Remove the two truss head screws which secure the transmission cover.
2. Lift the transmission cover. Unplug the green safety wire from beneath the transmission cover. Remove transmission cover.
3. Push the idler pulley toward the right side of the unit. Lift the belt over the idler pulley. See figure 18.
4. Remove the belt from the variable speed pulley.
5. Remove the two bolts which hold the shift lever bracket to the frame on the left side of the unit. Swing the bracket toward the right so the belt can be removed from the transmission pulley. See figure 18.
6. Replace belt, and reassemble in reverse order.

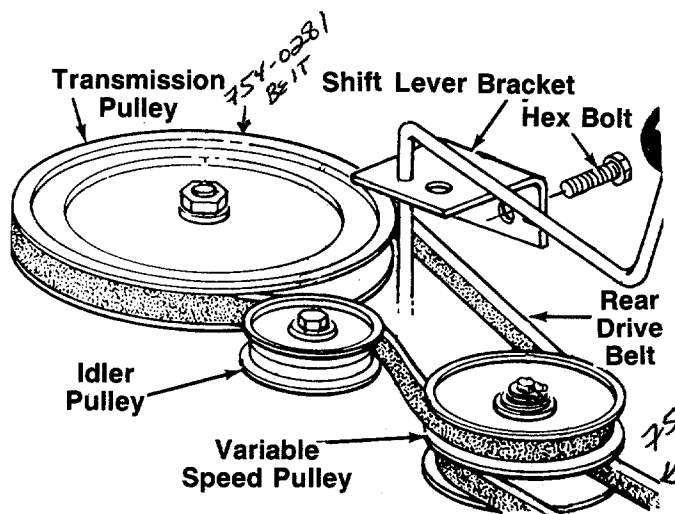


FIGURE 18.

Front Drive Belt

1. To remove the front drive belt, first remove the rear drive belt from the idler pulley and variable speed pulley.
2. Place the lift lever in the disengaged position.
3. Remove the hex bolts (belt keepers) from the engine pulley belt guard. Refer to deck manual.



NOTE

Make certain hex bolts are reassembled as shown in the separate deck manual.

4. Unhook the deck belt from the engine pulley.
5. Remove the two bolts, lock washers and nuts on each side of the frame which hold the engine pulley belt guard to the frame. See figure 19.

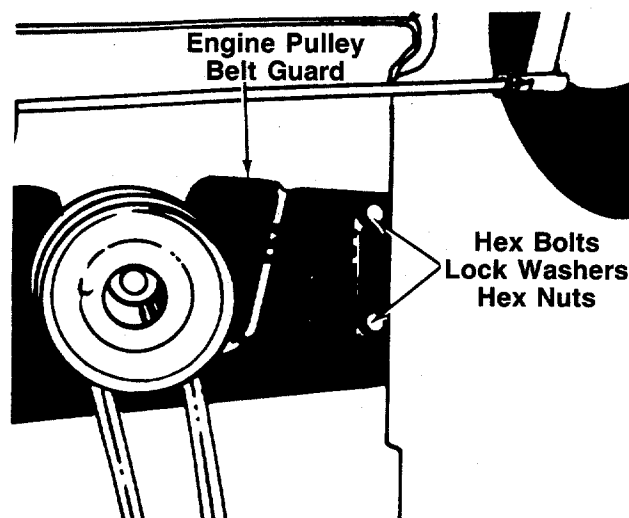


FIGURE 19.

6. Remove the engine pulley belt guard by slipping it back and to the right. See figure 20.

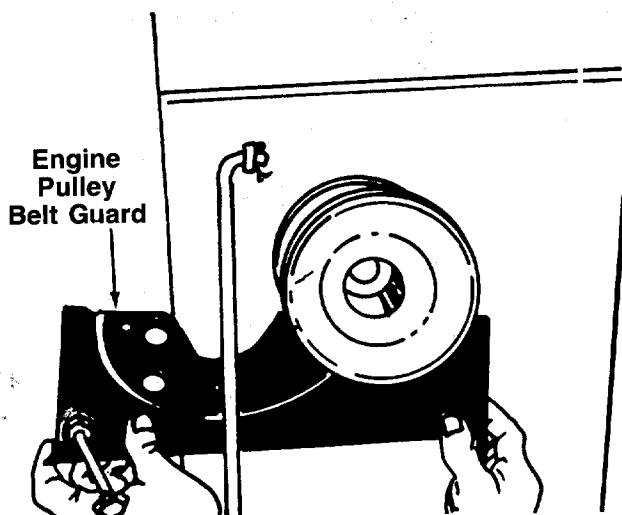


FIGURE 20.

7. Place the clutch-brake pedal in park position.
8. Push forward on the variable speed pulley, and lift the belt off the engine and remove the belt from the engine pulley.
9. Release the clutch-brake pedal. Using the pedal to move the variable speed pulley as necessary, lift the belt up and off the variable speed pulley.



When reassembling, make certain belt is inside the pins. See figure 21.

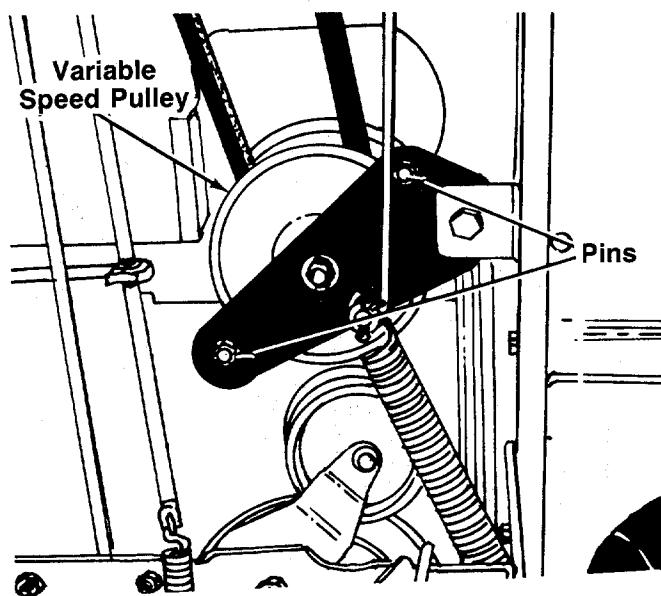


FIGURE 21.

10. Reassemble with a new belt, following instructions in reverse order.

BATTERY REMOVAL OR INSTALLATION



WARNING

When removing the battery, follow this order of disassembly to prevent the screwdriver from shorting against the frame.

1. Remove the Negative cable.
2. Remove the Positive cable.

To install a battery:

1. Attach the Positive cable.
2. Attach the Negative cable.

JUMP STARTING

1. Attach the first jumper cable from the Positive terminal of the good battery to the Positive terminal of the dead battery.
2. Attach the second jumper cable from the Negative terminal of the good battery to the FRAME OF THE UNIT WITH THE DEAD BATTERY.



WARNING

Failure to use this starting procedure could cause sparking, and the gas in either battery could explode.

BATTERY MAINTENANCE

1. Check periodically (every two weeks or before and after charging) to be sure electrolyte level is above the lowest line on battery. Add only distilled water or a good quality drinking water. NEVER add additional acid or other chemicals to battery after initial activation.
2. The battery should be checked with a hydrometer after every 25 hours of operation. If the specific gravity is less than 1.225, remove battery and recharge.
3. Coat the terminals and exposed wiring with a thin coat of grease or petroleum jelly for longer service and protection against electrolyte corrosion.
4. The battery should be kept clean. Any deposits of acid should be neutralized with soda and water. Be careful not to get this solution in the cells.

BATTERY STORAGE

1. Charge battery using normal methods. NEVER store discharged battery as it will not recover.
2. When storing battery for extended periods, disconnect battery cables. Removing battery from unit is recommended.

3. Store in cold, dry place.
4. Recharge battery whenever the specific gravity is less than 1.225, before returning to service, or every two months, whichever occurs first.

COMMON CAUSES FOR BATTERY FAILURE ARE:

1. Overcharging
2. Undercharging
3. Lack of water
4. Loose holds downs and/or corroded connections
5. Excessive loads
6. Battery electrolyte substitutes
7. Freezing of electrolyte



NOTE

THESE FAILURES DO NOT CONSTITUTE WARRANTY.

INSTALLATION OF TIRE TO RIM



The following procedure must be followed when removing or installing a tire to the rim.

1. Be sure rim is clean and rust free.
2. Lubricate both the tire and rim generously.

3. Never inflate to over 30 p.s.i. to seat beads. Excessive inflation pressure when seating beads may cause tire/rim assembly to burst with force sufficient to cause serious injury.

OFF-SEASON STORAGE

If the machine is to be inoperative for a period longer than 30 days, prepare for storage as follows.

1. Clean the engine and the entire unit thoroughly.
2. Lubricate all lubrication points. Wipe the entire machine with an oiled rag to protect the surfaces.
3. Refer to the engine manual for correct engine storage instructions. The engine must be completely drained of fuel to prevent gum deposits from forming on essential carburetor parts, fuel lines and fuel tanks.
4. Refer to battery storage instructions on page 16.
5. Store unit in a clean, dry area.



NOTE

When storing any type of power equipment in an unventilated or metal storage shed, care should be taken to rustproof the equipment. Using a light oil or silicone, coat the equipment, especially any chains, springs, bearings and cables.

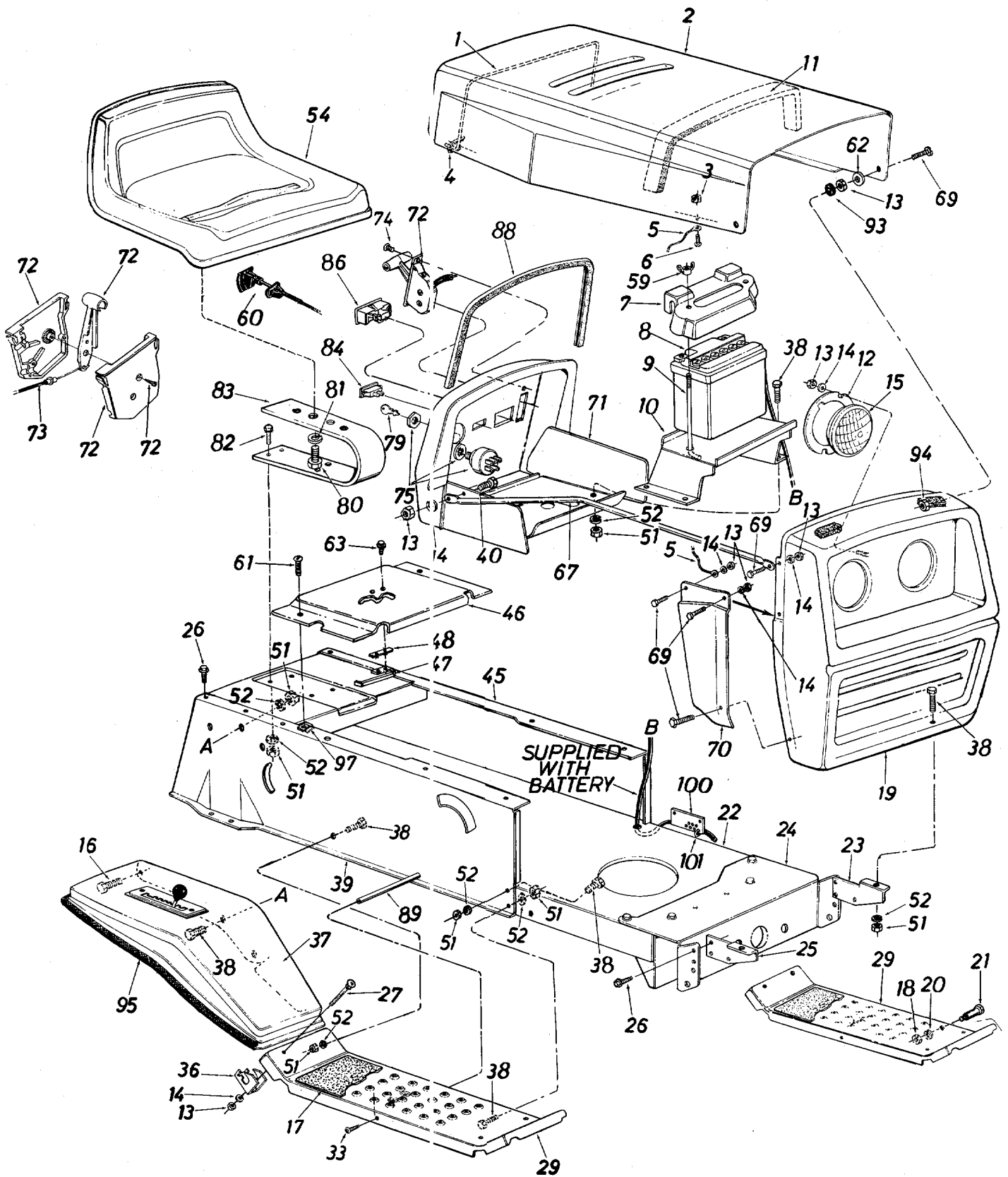
TROUBLE SHOOTING CHART FOR ELECTRIC START MODELS

TROUBLE	LOOK FOR	REMEDY
Engine will not crank	Battery installed incorrectly	The battery must be installed with the negative, identified at the terminal post by (Neg, N or -), grounded. The positive (Pos, P or +) attaches to the large cable from the solenoid. The small red wire from the fuse holder or circuit breaker is also attached to the positive terminal.
	Blown fuse or circuit breaker	Replace fuse with 7½ amp. fuse ¼ x 1¼" lg. Circuit breaker will reset itself when it cools off. Fuses or circuit breakers seldom open or fail without a reason. The problem must be corrected. Check for loose connections in the fuse holder. Replace fuse holder if necessary. A dead short may be in the cranking or charging circuit where the insulation may have rubbed through and exposed the bare wire. Replace the wire or repair with electrician's tape if the wire strands have not been damaged. Note: Look for a wire pinched between body panels, burned by the exhaust pipe or muffler or rubbed against a moving part.
	Battery is dead or weak	<p>Use a hydrometer to check the condition of the battery. The Specific Gravity (s.g.) should be 1.265 at 80° F. (1.215 s.g. minimum needed for cranking engine). The reason for the battery failing must be determined. (1) Defective battery. Battery will not accept or hold a full charge. (2) Short circuit. Check for grounded wire. (3) Charging system not working, either engine alternator or trickle charger.</p> <p>Trickle Charger. Check with multimeter. Charger 725-0578—input 120 V A.C., no load output 13.5 V D.C., rated load current 1 amp. Charger 725-0507—input 120 V A.C., no load output 17.4 V D.C., rated load current 1½ amp.</p> <p>Alternator (dual or single circuit) The charging system is an alternator located under the flywheel. It is unregulated and rated 3 amp. at 3600 r.p.m. A diode (rectifier) is located in the output lead just before the wire harness plug on the engine side.</p> <div style="text-align: center;"> <p>The diagram shows a cross-section of a wire harness. On the left, a red wire is labeled 'Red Wire' and a black wire is labeled 'Black Wire'. Both wires pass through a 'Diode' and a 'Shrink Tube'. The red wire then connects to a terminal labeled '3 AMP DC (Batt.)'. The black wire connects to a terminal labeled '7 AMP AC (Lamps)'. A 'Polarized Plug' is shown at the end of the harness. An arrow points from the left towards the wires, labeled 'To Alternator'.</p> </div> <p>The diode changes A.C. to D.C. to charge the battery. A bad diode can either fail to charge the battery or discharge the battery if the alternator is shorted as well as the diode. To test: (1) Disconnect charger lead from the battery (small red wire). (2) Connect 12 V small test lamp between the 3 amp. D.C. charge lead and the positive terminal of the battery. (3) With the engine off, the lamp should not light. If it does, the diode and possibly the alternator should be replaced. (4) Start the engine. The lamp should light. If it does not, the alternator (stator) or lead wire is bad and should be replaced.</p>
	Mechanical failure. (Wires and switches)	The interlock system includes two mechanical activated switches which are wired in series in the circuit used to energize the starter solenoid. While testing the interlock system, you will make the mower temporarily unsafe by permitting the engine to be started with the blade and clutch engaged. WARNING: While testing, disengage the clutch, shut off the blade control, set the parking brake and place the gear shift lever in neutral. Attach a wire (minimum 18 gauge) to the positive terminal of the battery and touch the other end to the small terminal on the solenoid. If the engine does not crank: (1) There is a loose connection or poor ground. (2) The solenoid may be bad. The solenoid can be checked by using a heavy wire (#8 gauge minimum) and jumping between the two large terminals. If the engine cranks, the solenoid is bad. (3) If the engine does not crank when you jump the solenoid, have the starter motor tested by an authorized engine dealer. If the engine does crank, the problem is with one of the safety switches, ignition switch or the wire between the fuse holder (or circuit breaker) and the small terminal on the solenoid. Note: Look for a poor connection at the switches or a defective switch. Replace if necessary.
Engine cranks but will not start	Throttle or choke not in starting position	Check owner's guide for correct position for throttle control and choke (if separate control) for starting.

TROUBLE SHOOTING CHART FOR ELECTRIC START MODELS

TROUBLE	LOOK FOR	REMEDY
	No spark to spark plug	Spark plug lead disconnected. Connect lead. Hold spark plug lead away from engine block about 1/8". Crank engine. There should be a spark. If not, have engine repaired at authorized engine service dealer. Faulty spark plug. To test, remove spark plug. Attach spark plug lead to spark plug. Ground the spark plug body against the engine block. Crank the engine. The spark plug should fire at the electrode. Replace if it does not.
	No fuel to the carburetor	Gasoline tank empty. Fill. Fuel valve shut off. Open valve. Valve is located either at the bottom of the fuel tank or on the carburetor. Fuel line plugged. Remove and clean.
	Air filter dirty	If the air cleaner is dirty, the engine may not start. Clean or replace as recommended by the engine manufacturer.
Engine smokes	Engine loses crankcase vacuum	Dipstick not seated or broken. Replace defective part. Engine breather defective. Replace.
Excessive vibration	Bent or damaged blade spindle	Stop engine immediately. Check all pulleys, blade adapters, keys and bolts for tightness and damage. Tighten or replace any damaged parts.
	Bent blade	Stop engine immediately. Replace damaged blade. Only use original equipment blades.
Mower will not discharge grass or leaves uncut strips	Engine speed low Transmission selection Blades short or dull	Throttle must be set between 3/4 and full throttle. Use lower transmission gear. The slower your ground speed, the better the quality of cut. Sharpen or replace blades (uncut strip problem only).

Models 700, 702, 704 and 706



Models 700, 702, 704 and 706

PARTS LIST FOR MODELS 700, 702, 704 AND 706 LAWN TRACTORS

REF. NO.	PART NO.	COLOR CODE	DESCRIPTION	NEW PART	REF. NO.	PART NO.	COLOR CODE	DESCRIPTION	NEW PART
1	732-0477		Hood Spring		45	14603		L.H. Side Frame	
2	16207		Hood		46	16433		Shift Cover	N
3	712-0272		Hex Sems Nut #10-24 Thd.*		47	725-0759		Reverse Safety Switch	
4	726-0154		Push Mount Tie		48	726-0222		Insulator Nut Plate	
5	723-0302		Hood Stop 7" Lg.		51	712-0267		Hex Nut 5/16-18 Thd.*	
6	710-0473		Truss Hd. Scr. #10-24 x 1/2"*		52	736-0119		L-Wash. 5/16" I.D.*	
7	731-0707		Battery Cover		54	757-0309		Seat Ass'y.	
8	725-0453		12 Volt Battery		59	712-0113		Wing Nut 1/4-20 Thd.—Plastic	
9	711-0222		Battery Hold Down Rod		60	746-0613		Choke Control 44.0" Lg.	N
10	12747		Battery Bracket		61	710-0351		Truss Mach. Tap Scr. #10 x	
11	722-0138		PVC Foam—Strip					.50" Lg.	
12	09960		Headlight Retainer		62	736-0173		Fl-Wash. .281 I.D. x .73 O.D.	
13	712-0287		Hex Nut 1/4-20 Thd.*		63	710-0227		Hex Wash. Hd. AB-Tap Scr.	
14	736-0329		L-Wash. 1/4" I.D.*					#8 x .50	
15	725-0222		Headlight		67	749-0673		Grille Support Rod—L.H.	
16	710-0653		Hex Wash. Hd. Tap Scr.			749-0674		Grille Support Rod—R.H.	
			1/4 x 3/8" Lg.		69	710-0255		Truss Hd. Scr. 1/4-20 x .75"	
17	723-0360		Foot Pad					Lg.*	
18	712-0798		Hex Nut 3/8-16 Thd.*		70	14748		R.H.—Grille Side Panel	
19	14781		Grille Ass'y.			14749		L.H.—Grille Side Panel	
20	736-0169		L-Wash. 3/8" I.D.*		71	16184		Dash Panel Ass'y.	
21	738-0145		Shld. Bolt .50" Dia. x .84		72	831-0823		Throttle Control Box Ass'y.	N
22	14606		Lower Frame		73	746-0634		Throttle Control Wire—35"	N
23	13863		Grille Mount Brkt.—L.H.		74	710-0779		Truss Mach. AB-Tap Scr.	
24	14619		Front Pivot Brkt.					#10 x .5" Lg.	
25	13862		Grille Mount Brkt.—R.H.		75	725-0267		Ignition Switch	
26	710-0726		Hex Wash. Hd. AB-Tap Scr.		79	725-0201		Ignition Key	
			5/16 x .75" Lg.		80	710-0865		Hex Bolt 1/2-13 x 1.00" Lg.	
27	710-0495		Carr. Bolt 1/4-20 x 2.00" Lg.*					(Grade 5) (2-Req'd.)	
29	14604		Running Board (R.H. & L.H.)		81	736-0921		L-Wash. 1/2" I.D.*	
33	710-0323		Truss Mach. Scr. 5/16-18 x		82	710-0376		Hex Bolt 5/16-18 x 1.00"	
			.75" Lg.*					Lg.*	
36	14671		Fender Clamp		83	732-0458		Seat Spring 5.5" High	
37	16197		Fender (R.H.)—Used w/Side		84	725-1130		Light Switch	N
			Discharge Deck		86	725-0925		Ammeter	
	14666		Fender (L.H.)—Used w/Side		88	731-0511		Molding Strip 27" Lg.	
			Discharge Deck		89	738-0526		Running Board Rod	
	16198		Fender (R.H.)—Used w/Rear		93	735-0144		Rubber Wash. 1/2" I.D. x 1.0	
			Discharge Deck					O.D. x .25"	
	15350		Fender (L.H.)—Used w/Rear		94	712-0324		Hex Sems Ins. L-Nut 1/4-20	
			Discharge Deck					Thd.	
38	710-0118		Hex Bolt 5/16-18 x .75" Lg.*		95	731-0511		Trim Strip 31.0" Lg.	
39	14602		R.H. Side Frame		97	726-0139		Speed Nut #10Z	
40	710-0258		Hex Bolt 1/4-20 x .62" Lg.*		100	16371		Brake Cable Bracket	
41	722-0157		Foam Strip		101	726-0197		Cable Tie	

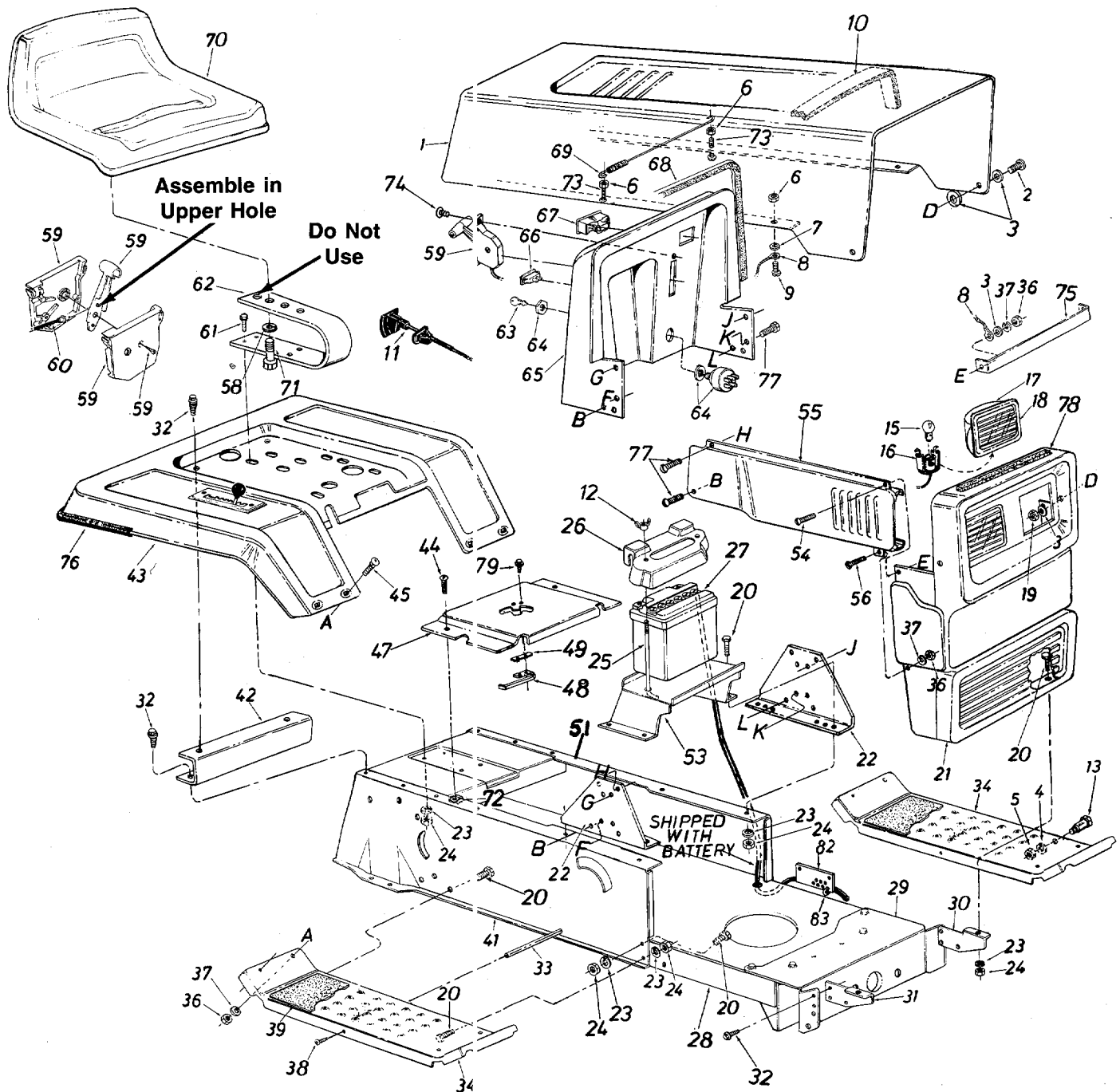
*For faster service obtain standard nuts, bolts and washers locally.
If these items cannot be obtained locally, order by part number and size as shown on parts list.

If color or finish is important when ordering parts, use the appropriate color code shown below [i.e. (part no.)-462 for Red Flake Finish].

Color Codes

312—White	463—Topflite Red
436—Radiant Yellow	480—Brilliant Green
452—Black	483—Charcoal Grey
456—Radiant Tangerine	499—Beige
462—Red Flake	623—Silver Mist

Models 701, 703 and 705



Models 701, 703 and 705

PARTS LIST FOR MODELS 701, 703 AND 705 LAWN TRACTORS

REF. NO.	PART NO.	COLOR CODE	DESCRIPTION	NEW PART	REF. NO.	PART NO.	COLOR CODE	DESCRIPTION	NEW PART
1	15808		Hood		44	710-0351		Truss Mach. Tap Scr. #10 x .50" Lg.	
2	710-0258		Hex Scr. 1/4-20 x .62" Lg.*		45	710-0167		Carriage Bolt 1/4-20 x .50" Lg.*	
3	736-0463		Fl-Wash. .296" I.D. x .62" O.D.		47	16433		Transmission Panel	N
4	736-0169		L-Wash. 3/8" I.D.*		48	725-0759		Reverse Safety Switch	
5	712-0798		Hex Nut 3/8-16 Thd.*		49	726-0222		Insulator Nut Plate	
6	712-0272		Hex Sems Nut #10-24 Thd.*		51	14603		L.H. Side Frame	
7	736-0931		Fl-Wash. .203" I.D. x .41" O.D. x .040		53	12747		Battery Bracket	
8	727-0290		Hood Stop		54	710-0255		Truss Hd. Scr. 1/4-20 x .75" Lg.*	
9	710-0473		Truss Hd. Scr. #10-24 x 1/2" Lg.*		55	16469		Side Cover—R.H.	N
10	722-0138		PVC Foam			15815		Side Cover—L.H. (Not Shown)	
11	746-0613		Choke Control 44.0" Lg.	N	56	710-0286		Truss Mach. Scr. 1/4-20 x .50" Lg.*	
12	712-0113		Wing Nut 1/4-20 Thd.—Plastic		58	736-0921		L-Wash. 1/2" I.D.*	
13	738-0145		Shld. Bolt .50" Dia. x .84		59	831-0823		Throttle Control Box Ass'y.	N
15	725-0963		Lamp		60	746-0503		Throttle Control Wire 35"	
16	725-1058		Twist Lock—Lamp Socket	N	61	710-0376		Hex Bolt 5/16-18 x 1.0"*	
17	731-0705		Headlight Housing		62	732-0458		Seat Spring 5.5" High	
18	731-0706		Lens		63	725-0201		Ignition Key	
19	712-0107		Hex L-Nut 1/4-20 Thd.		64	725-0267		Ignition Switch	
20	710-0118		Hex Bolt 5/16-18 x .75" Lg.*		65	16489		Dash Panel	
21	15804		Grille		66	725-1130		Light Switch	N
22	15818		Dash Support Bracket		67	725-0925		Ammeter	N
23	736-0119		L-Wash. 5/16" I.D.*		68	731-0511		Trim Strip—27"	
24	712-0267		Hex Nut 5/16-18 Thd.*		69	732-0462		Hood Spring	
25	711-0222		Battery Hold Down Rod		70	757-0309		Seat Ass'y.	
26	731-0707		Battery Cover		71	710-0493		Hex Bolt 1/2-13 x 1.0" Lg. (2 Req'd.)	
27	725-0453		12 Volt Battery		72	726-0139		Speed Nut #10Z	
28	14606		Lower Frame		73	710-0749		Hex Scr. #10-24 x 1.0" Lg.	
29	14619		Front Pivot Brk't.		74	710-0779		Truss Mach. AB-Tap Scr. #10 x .5" Lg.	
30	15821		Grille Mount Brk't.—L.H.		75	15931		Tie Strap—Grille/Side Panel	
31	15822		Grille Mount Brk't.—R.H.		76	731-0511		Trim Strip—81"	
32	710-0726		Hex Wash. Hd. AB-Tap Scr. 5/16 x .75" Lg.		77	710-0642		Hex Wash. Hd. Tap Scr. 1/4 x .75" Lg.	
33	738-0526		Running Board Rod		78	722-0157		Foam Strip 3/8 x 1-1/8 x 1 1/2" Lg. (2-Req'd.)	
34	14604		Running Board (R.H. & L.H.)		79	710-0227		Hex Wash. Hd. AB-Tap Scr. #8 x .50" Lg.	
36	712-0287		Hex Nut 1/4-20 Thd.*		82	16371		Brake Cable Bracket	
37	736-0329		L-Wash. 1/4" I.D.*		83	726-0154		Cable Tie	
38	710-0323		Truss Mach. Scr. 5/16-18 x .75" Lg.*						
39	723-0360		Foot Pad						
41	14602		R.H. Side Frame						
42	15848		Fender Mount Brace						
43	16221		Rear Fender						

*For faster service obtain standard nuts, bolts and washers locally. If these items cannot be obtained locally, order by part number and size as shown on parts list.

If color or finish is important when ordering parts, use the appropriate color code shown below [i.e. (part no.)-462 for Red Flake Finish].



NOTE

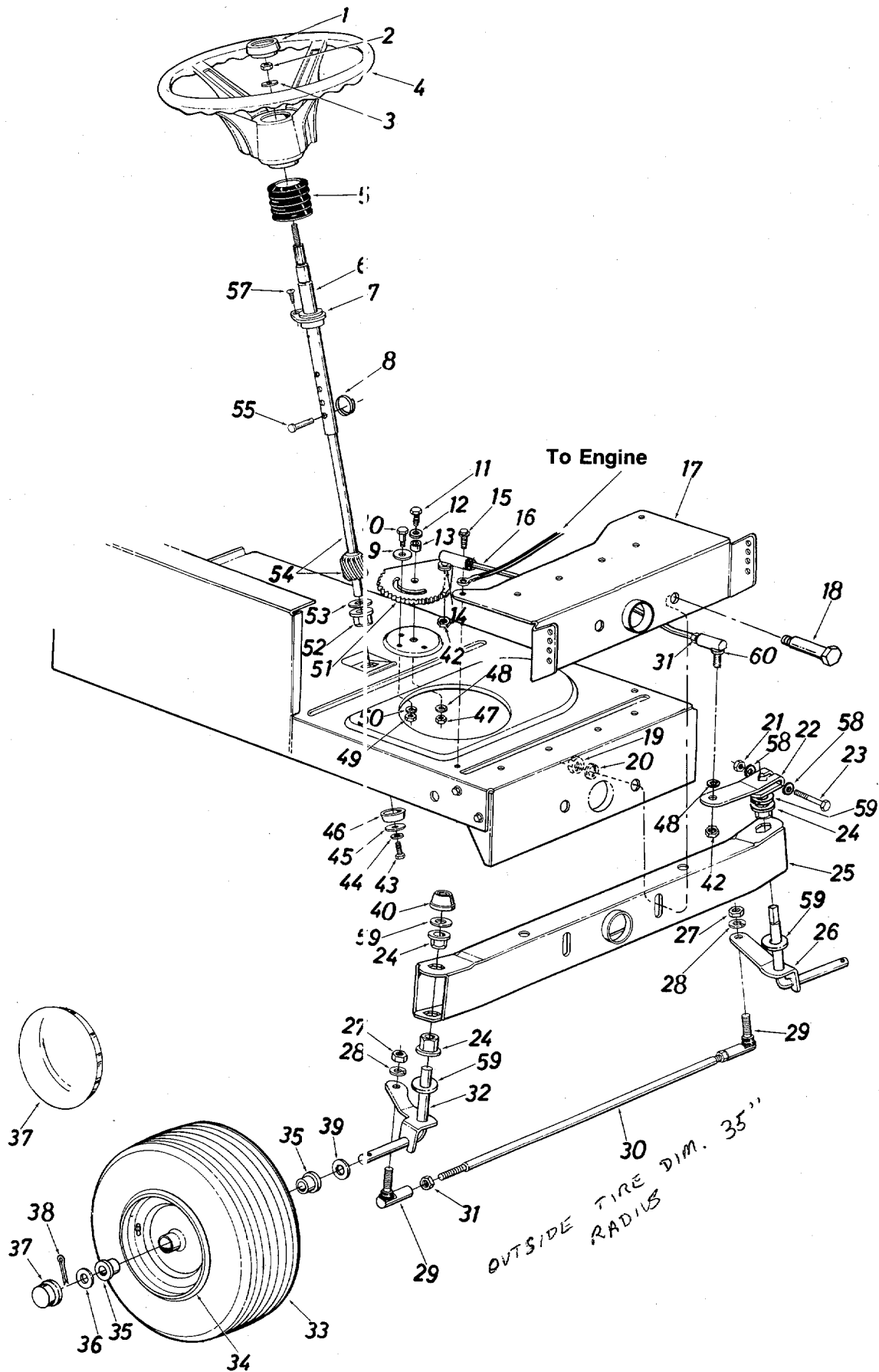
This instruction manual covers various models, and all specifications shown do not necessarily apply to your model. Specifications subject to change without notice or obligation.

Color Codes

312—White
436—Radiant Yellow
452—Black
456—Radiant Tangerine
462—Red Flake

463—Topflite Red
480—Brilliant Green
483—Charcoal Grey
499—Beige
623—Silver Mist

Models 700, 701, 702, 703, 704, 705 and 706



Models 700, 701, 702, 703, 704, 705 and 706

PARTS LIST FOR MODELS 700 THRU 706 LAWN TRACTORS

REF. NO.	PART NO.	COLOR CODE	DESCRIPTION	NEW PART	REF. NO.	PART NO.	COLOR CODE	DESCRIPTION	NEW PART
1	731-0220		Steering Wheel Cap		29	723-0156		Ball Joint 3/8-24 Thd.	
2	712-0158		Hex L-Nut 5/16-18 Thd.†		30	711-0613		Tie Rod	
	712-0237		Hex L-Nut 5/16-24 Thd.††		31	712-0711		Hex Jam Nut 3/8-24 Thd.*	
3	736-0242		Belleville Wash. .345" I.D.		32	15840		Front Axle Ass'y.—R.H.	
4	731-0219		Steering Wheel 12" Dia.†		33	**		Wheel Ass'y. Comp.	
	731-0356		Steering Wheel 13.5" Dia.†		34	**		Front Wheel Rim Only	
	731-0805		Steering Wheel 12" Dia.††	N	35	741-0313		Bearing	
	731-0806		Steering Wheel 13.25" Dia.††	N	36	736-0187		FI-Wash. .640" I.D. x 1.54" O.D.	
5	731-0559		Steering Bellow					Front Wheel Hub Cap	
6	14775		Steering Column Ass'y.†		37	731-0484		Front Wheel Hub Cap	
	16512		Steering Column Ass'y.††	N		734-0541		(Chrome—Optional)	
7	741-0356		Flange Bearing .890 I.D. x 1.36 O.D.		38	714-0470		Cotter Pin 1/8" Dia. x 1.25" Lg.*	
8	714-0150		Locking Ring					FI-Wash. .640" I.D. x .24" O.D.	
9	736-0319		FI-Wash. .438" I.D. x 1.37"		39	736-0187		Push Cap 5/8" Dia. Rod	
10	738-0141		Shoulder Bolt .437" Dia. x .35 Lg. 5/16-18 Thd.		40	726-0214		Hex Nut 3/8-24 Thd.*	
11	710-0152		Hex Bolt 3/8-24 x 1.0" Lg. (Grade 5)		42	712-0241		Hex L-Bolt 5/16-18 x .62"*	
12	736-0258		FI-Wash. .38" I.D. x 1.0"		43	710-0538		L-Wash. 5/16" I.D.*	
13	750-0535		Spacer .380" I.D. x .625" O.D. x .227		44	736-0119		FI-Wash. .344" I.D. x 1.25" O.D.	
14	736-0169		L-Wash. 3/8" I.D.*		45	736-0231		Spacer (Plastic)	
15	710-0726		Hex Wash. Hd. Self-Tap Scr.		46	750-0532		Hex Nut 3/8-24 Thd.*	
16	711-0788		Steering Drag Link	N	47	712-0241		L-Wash. 3/8" I.D.*	
17	14619		Front Pivot Brkt.		48	736-0169		Hex Nut 5/16-18 Thd.*	
18	738-0527		Shoulder Bolt .498" Dia. x 2.04 Lg. 3/8-16 Thd.		49	712-0267		L-Wash. 5/16" I.D.*	
19	712-0798		Hex Nut 3/8-16 Thd.*		50	736-0119		Steering Gear Segment	N
20	736-0169		L-Wash. 3/8" I.D.*		51	717-0622		Hex Flg. Brg. .634 I.D.	
21	712-0237		Hex Cent. L-Nut 5/16-24 Thd.		52	741-0225		FI-Wash. (Hardened)	
22	16481		Steering Arm Front Axle	N	53	736-0187		Steering Shaft Lower	
23	710-0772		Hex Bolt 5/16-24 x 2.00" Lg. (Grade 5)		54	738-0522		Clevis Pin 1/4" Dia. x 1.00" Lg.	
24	741-0225		Hex Flg. Brg. .634 I.D.		55	711-0684		Oval Hd. Cr.—Sunk Scr. #10 x 5/8" Lg.	
25	14608		Pivot Bar Ass'y.		57	710-0837		Wave Wash. .32" I.D. x .62"	
26	16480		Front Axle Ass'y.—L.H.	N	58	736-0271		FI-Wash. (Hardened)	
27	712-0241		Hex Nut 3/8-24 Thd.*		59	736-0187		Drag Link Ball Joint 3/8-24 Thd.	
28	736-0169		L-Wash. 3/8" I.D.*		60	723-3018			

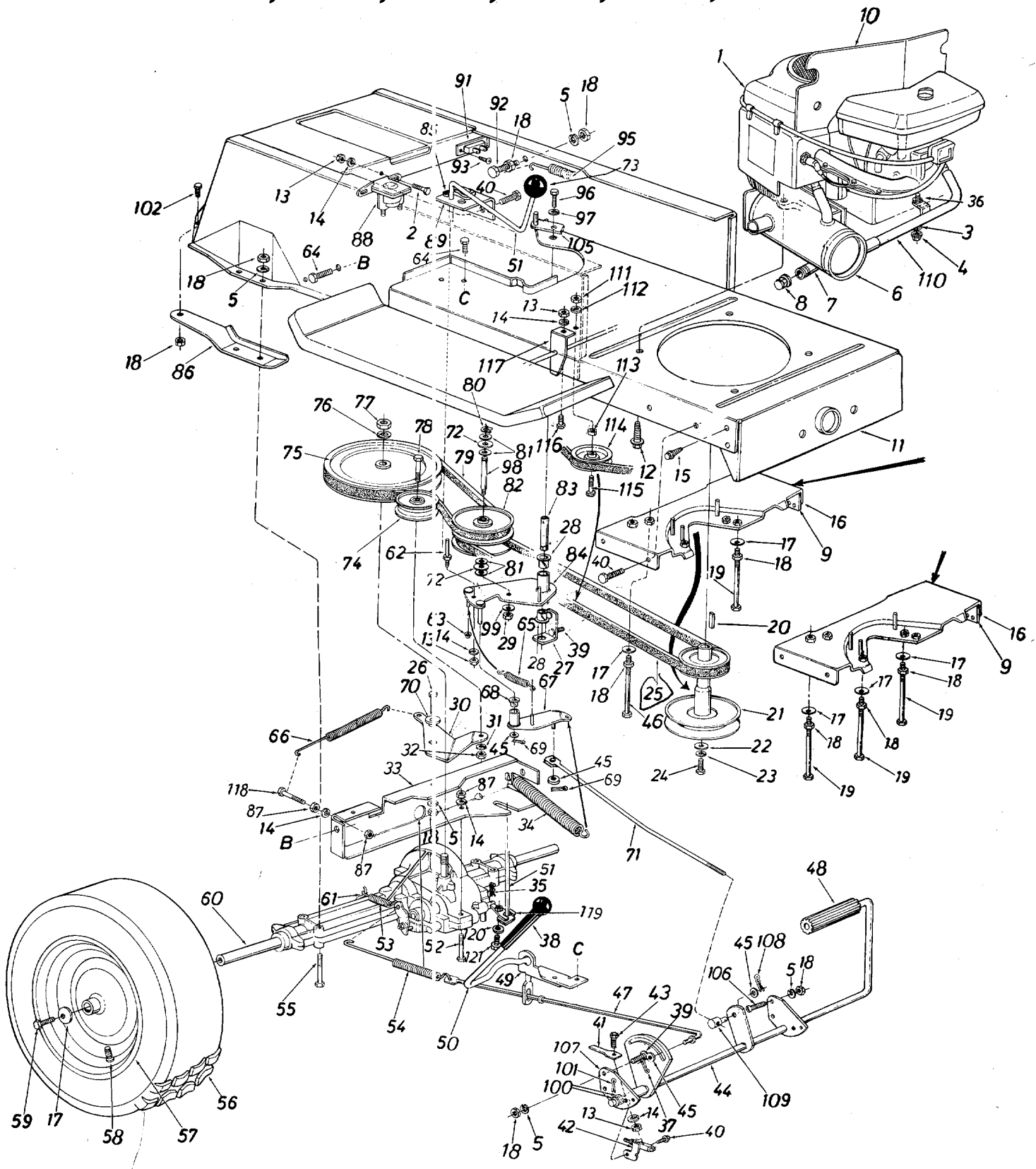
*For faster service obtain standard nuts, bolts and washers locally.
If these items cannot be obtained locally, order by part number and size as shown on parts list.

† Steering shaft with two flats
†† Steering shaft with splined end

**FRONT WHEEL CHART

Description	15 x 6.00 (Rib Tread)	15 x 6.00 (Turf Tread)
Wheel Assembly Comp.	734-1231	734-0863
Tire Only	734-1232	734-0864
Rim Only	734-0997	734-0997
Bearing	741-0313	741-0313
Air Valve	734-0255	734-0255
Grease Fitting	737-0146	737-0146

Models 700, 701, 702, 703, 704, 705 and 706



**** REAR WHEEL CHART**

Description	18 x 9.50	18 x 8.50	18 x 6.50	16 x 6.50	18 x 5.5
Wheel Assembly Comp.	734-0817	734-0601	734-1132	734-0591	734-1190
Tire Only	734-0448	734-0516	734-0294	734-0275	734-1197
Rim Only	734-0603	734-0603	734-1133	734-0594	734-1191

Models 700, 701, 702, 703, 704, 705 and 706

PARTS LIST FOR MODELS 700 THRU 706 LAWN TRACTORS

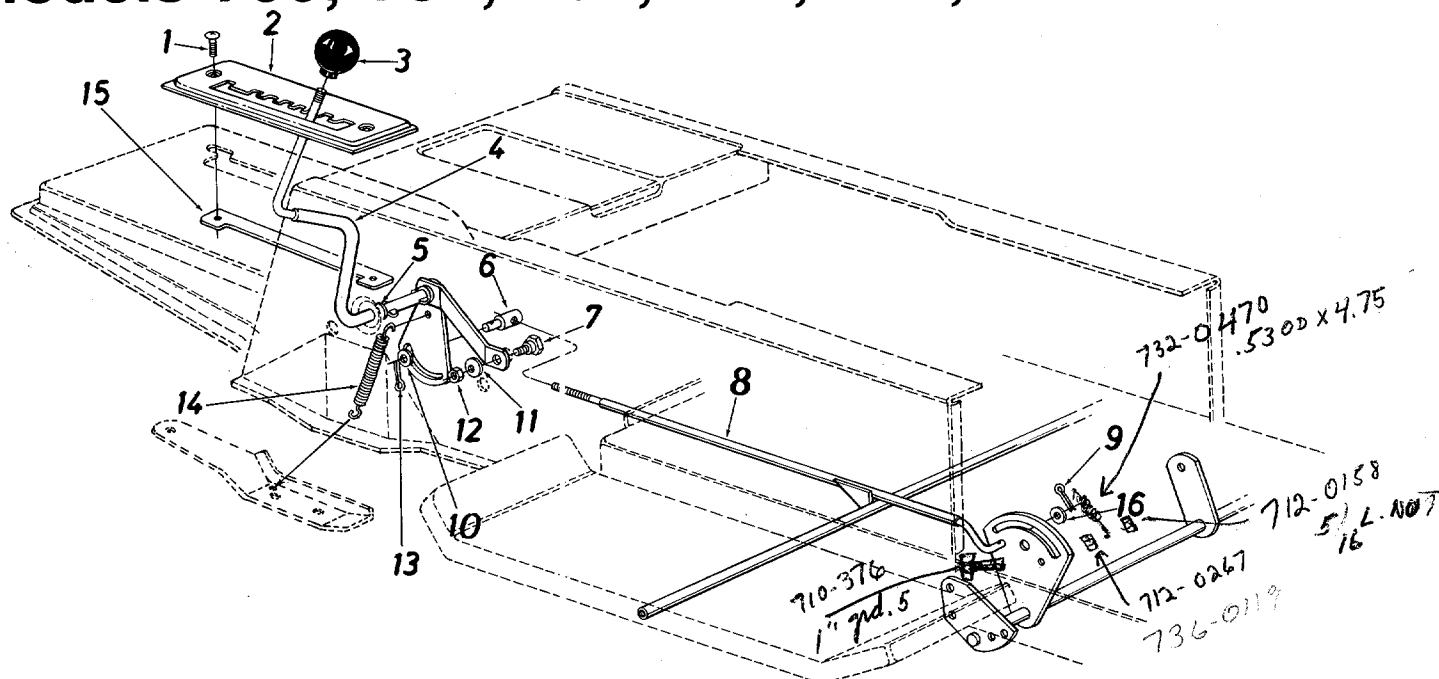
REF. NO.	PART NO.	COLOR CODE	DESCRIPTION	NEW PART	REF. NO.	PART NO.	COLOR CODE	DESCRIPTION	NEW PART
1	—		Engine		46	710-0402		Hex Bolt 5/16-18 x 4.5"	
2	710-0258		Hex Bolt 1/4-20 x .62" Lg.*		47	747-0519		Brake Rod 20.9" Lg.	
3	736-0170		Special L-Wash. 5/16" I.D.		48	735-0196		Foot Pad	
4	712-0267		Hex Nut 5/16-18 Thd.*		49	15889		Brake Lever Bracket	
5	736-0119		L-Wash. 5/16" I.D.*		50	15888		Hill Holder Brake Handle	
6	751-0444		Exhaust Muffler <small>NEW-SAME No. POSITION</small>		51	16430		Shift Lever Ass'y.	
7	737-0164		Pipe Nipple <small>EXHAUST PORT CHANGED.</small>		52	710-0559		Hex Bolt 1/4-28 x 1.75" Lg.*	
8	737-0143		Cap Oil Drain		53	732-0264		Ext. Spring .38" O.D. x 2.5"	
9	16371		Brake Cable Brk't.		54	732-0413		Ext. Spring .59" O.D. x 7.08"	
10	16215		Heat Shield (700, 702, 704 and 706)		55	710-0176		Hex Bolt 5/16-18 x 2.75"	
	16224		Heat Shield (701, 703 and 705)		56	**		Wheel Ass'y. Comp.	
					57	**		Wheel Rim Only	
11	15930		Lower Frame Ass'y.		58	734-0255		Air Valve (Service Only)	
12	710-0502		Hex Wash. Hd. TT-Tap Scr. 3/8-16 x 1.25" Lg.		59	710-0627		Hex Bolt 5/16-24 x .75" Lg.*	
13	712-0287		Hex Nut 1/4-20 Thd.*		60	717-1050		Transaxle Complete—R.H.	
14	736-0329		L-Wash. 1/4" I.D.*		61	732-0454		Brake Return Spring Anchor	
15	710-0726		Hex Wash. Hd. AB-Tap Scr. 5/16" x .75" Lg.		62	711-0768		Belt Guard Pin 1/4-20 Thd.	
16	16219		Belt Guard Brkt. Ass'y.		63	726-0106		Cap Speed Nut 1/4" Dia.	
17	736-0242		Bell-Wash. .345" I.D. x .88"		64	710-0604		Hex Wash. TT-Tap Scr. 5/16 x .62" Lg.	
18	712-0267		Hex Nut 5/16-18 Thd.*		65	732-0387		Ext. Spring .50" Dia.	
19	710-0190		Hex Bolt 5/16-18 x 4.00"		66	732-0384		Ext. Spring .62" O.D. x 6.12"	
20	714-0114		Sq. Key 1/4" x 1/4" x 2.00"		67	16554		Variable Speed Torque Brkt. Ass'y.	N
21	756-0424		Engine Pulley (Use w/44" Deck)		68	741-0419		Flanged Bearing	
	756-0458		Engine Pulley (Use w/40" Deck)		69	714-0507		Cotter Pin 3/32" Dia.*	
22	736-0322		Fl-Wash. 7/16" I.D. x 1.25"		70	748-0234		Shoulder Spacer .500" Dia. x .27" Lg.	
23	736-0171		L-Wash. 7/16" I.D.*		71	747-0530		Speed Control Link	N
24	710-0757		Hex Bolt 7/16-20 x 1.50" Lg.		72	741-0405		Truss Bearing .56 Dia. x 1.25"	
25	754-0280		Variable-Speed Belt .715 x 53" Lg.		73	720-0165		Ball Knob	
26	710-0118		Hex Bolt 5/16-18 x .75" Lg.*		74	756-0437		Fl-Idler Pulley 3.25" x 1.0"	
27	16553		Bearing Shaft Bracket Ass'y.	N	75	756-0374		1/2" "V"-Pulley 8.0" O.D. x .501" I.D.	
28	741-0295		Flanged Nyliner Brg. 5/8" I.D. x .88" Lg.		76	736-0921		L-Wash. 1/2" I.D.*	
29	712-0241		Hex Nut 3/8-24 Thd.*		77	712-0922		Hex Jam Nut 1/2-20 Thd.*	
30	15891		Idler Bracket		78	710-0539		Hex Bolt 3/8-24 x .75" Lg.*	
31	736-0169		L-Wash. 3/8" I.D.*		79	754-0281		Variable Speed Belt .715 x 44" Lg.	
32	712-0241		Hex Nut 3/8-24 Thd.*		80	716-0114		Snap Ring .56" Dia.	
33	15945		Transaxle Support Brkt.		81	736-0355		Fl-Wash.	
34	732-0459		Ext. Spring .94" O.D. x 6.7		82	717-0800		Variable Speed Pulley Ass'y. 5" O.D.	
35	714-0149		Inter. Cotter Pin		83	711-0766		Bearing Shaft	
36	736-0204		Fl-Wash. .34" I.D. x .62" O.D. x .033		84	16354		Variable Speed Brkt. Ass'y.	
37	714-0507		Cotter Pin 3/32" Dia. x .75" *		85	732-0525		Comp. Spring Clip	N
38	720-0143		Grip—Black		86	14770		Transaxle Support Brkt.—R.H.	
39	710-0323		Truss Mach. Scr. 5/16-18 x .75" Lg.			14769		Transaxle Support Brkt.—L.H. (Not Shown)	
40	710-0599		Hex Wash. Hd. Self-Tap Scr. 1/4-20 x .50" Lg.		87	712-0138		Hex Nut 1/4-28 Thd.	
41	732-0435		Switch Actuator		88	725-0771		Solenoid	
42	725-0577		Safety Switch		89	16429		Shift Lever Bracket	
43	710-0597		Hex Bolt 1/4-20 x 1.0" Lg.*		91	725-0459		Circuit Breaker	
44	16235		Clutch & Brake Pedal Ass'y.		92	710-0959		Hex Bolt 5/16-18 x 1.50" Lg.	
45	736-0117		Fl-Wash.		93	710-0351		Truss Hd. Phil. Scr. #10 x 1/2" Lg.	

Models 700, 701, 702, 703, 704, 705 and 706

PARTS LIST FOR MODELS 700 THRU 706 LAWN TRACTORS (CONTINUED)

REF. NO.	PART NO.	COLOR CODE	DESCRIPTION	NEW PART	REF. NO.	PART NO.	COLOR CODE	DESCRIPTION	NEW PART
95	732-0307		Ext. Spring .99" O.D. x 11.0"		110	751-0446		Inlet Tube Ass'y.	N
96	710-0180		Hex Bolt 3/8-24 x .75" Lg.*		111	712-0798		Hex Nut 3/8"-16 Thd.*	
97	736-0105		Bell-Wash. .38" I.D. x .88"		112	736-0169		L-Wash. 3/8" I.D.*	
98	738-0569		Shaft .56" Dia. x 3.875" Lg.		113	736-0280		FI-Wash. .390" I.D. x 1.12"	
99	736-0331		Bell-Wash. .39" I.D. x 1.12"		114	756-0217		FI-Idler w/Flanges 2.750	
100	736-0256		FI-Wash.		115	710-0427		Hex Bolt 3/8-16 x 2.00" Lg.*	
101	714-0507		Cotter Pin 3/32" Dia. x .75"*		116	710-0258		Hex Bolt 1/4-20 x .62" Lg.*	
102	710-0604		Hex Wash. Hd. Scr. 5/16-8 x .62" Lg.		117	16181		Spring Hanger Bracket	
105	16067		Belt Guard		118	710-0428		Hex Bolt 1/4-28 x 1.25" Lg.*	
106	710-0118		Hex Bolt 5/16-18 x .75" Lg.*		119	16437		Shift Lever Link Ass'y.	
107	15835		Pedal Bracket		120	736-0270		Bell-Wash. .265 I.D. x .75 O.D.	
108	714-0507		Cotter Pin 3/32 x .75"*		121	710-0195		Hex Bolt 1/4-28 x .62" Lg.	
109	711-0198		Ferrule						

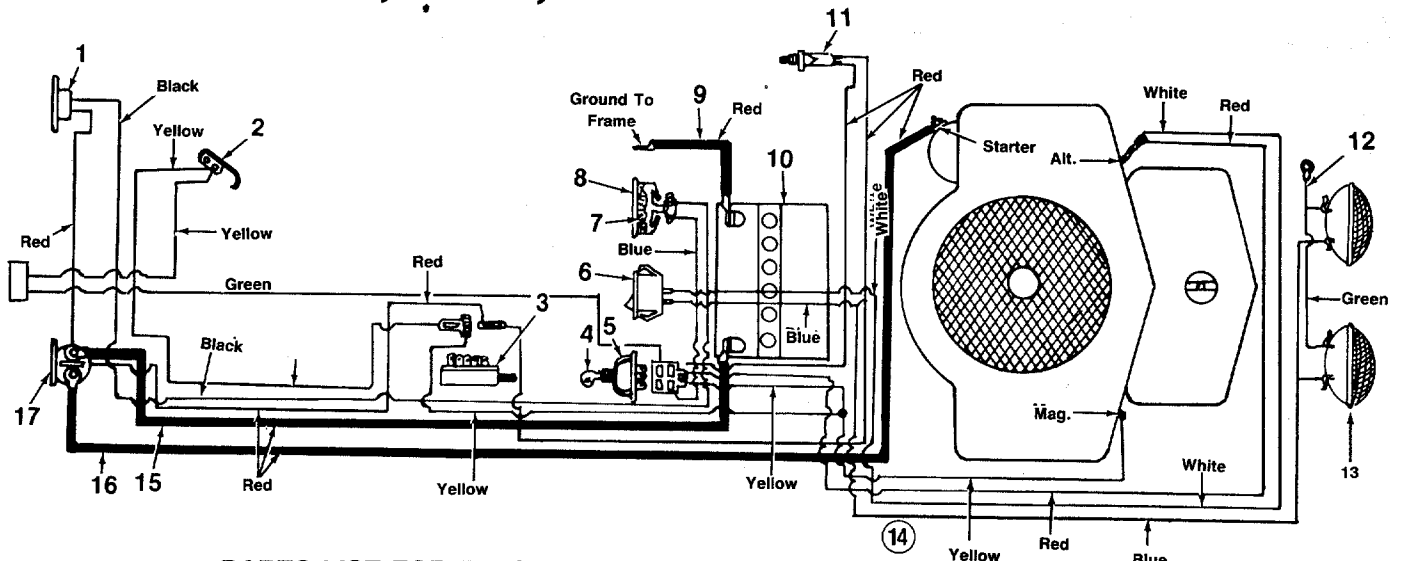
Models 700, 701, 702, 703, 704, 705 and 706



PARTS LIST FOR MODELS 700 THRU 706 LAWN TRACTORS

REF. NO.	PART NO.	COLOR CODE	DESCRIPTION	NEW PART	REF. NO.	PART NO.	COLOR CODE	DESCRIPTION	NEW PART
1	710-0924		Truss Mach. Scr. 1/4-20 x .75" Lg.		6	711-0198		Ferrule 3/8-24 x .37" Dia.	
2	16237		Speed Selector Plate 4-Speed		7	738-0155		Shoulder Bolt .435" Dia. x .160	
	16195		Speed Selector Plate 5-Speed		8	16355		Speed Control Rod Ass'y.	
	16236		Speed Selector Plate 6-Speed		9	714-0507		Cotter Pin 3/32" Dia. x .75"*	
	16194		Speed Selector Plate 7-Speed		10	736-0140		FI-Wash. .385" I.D. x .62" O.D.	
3	720-0175		Gear Shift Knob		11	736-0119		L-Wash. 5/16" I.D.*	
4	16192		Speed Selector Cam Ass'y.		12	712-0267		Hex Nut 5/16-18 Thd.*	
5	736-0192		Flat Washer .53" I.D. x .93"		13	714-0507		Cotter Pin 3/32 Dia. x .75"*	
					14	732-0303		Spring	
					15	16196		Clamping Plate	
					16	736-0226		FI-Wash. .47" I.D. x .88" O.D.	

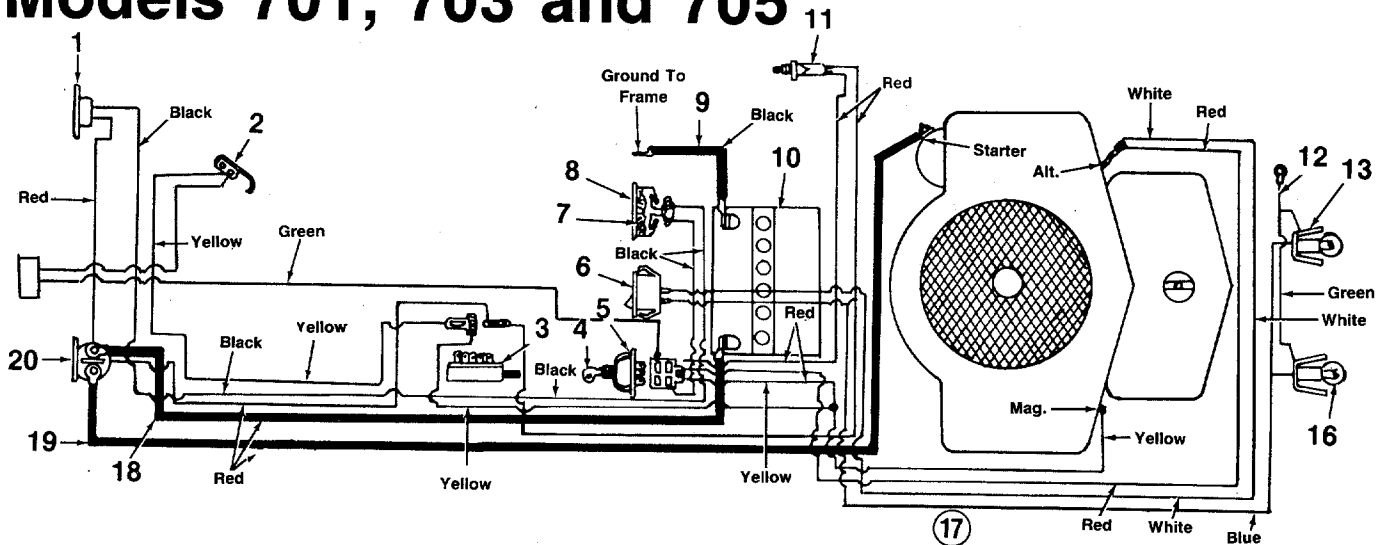
Models 700, 702, 704 and 706



PARTS LIST FOR ELECTRICAL SYSTEM MODELS 700, 702, 704 AND 706

REF. NO.	PART NO.	DESCRIPTION	REF. NO.	PART NO.	DESCRIPTION
1	725-0459	Circuit Breaker	10	725-0453	12 Volt Battery
2	725-0759	Spring Switch	11	725-0577	Safety Switch
3	725-0819	Safety Switch Dpst.	12	725-0916	Ground Wire
4	725-0201	Ignition Key	13	725-0222	Headlight
5	725-0267	Ignition Switch	14	725-1179	Wire Harness
6	725-0634	Headlight Switch	15	725-1080	Electric Wire 27.0" Lg.
7	722-0135	Foam Strip	16	725-0562	Electric Wire 32.5" Lg.
8	725-0925	Ammeter	17	725-0771	Solenoid
9	725-0994	Grounding Wire 14.0" Lg.			

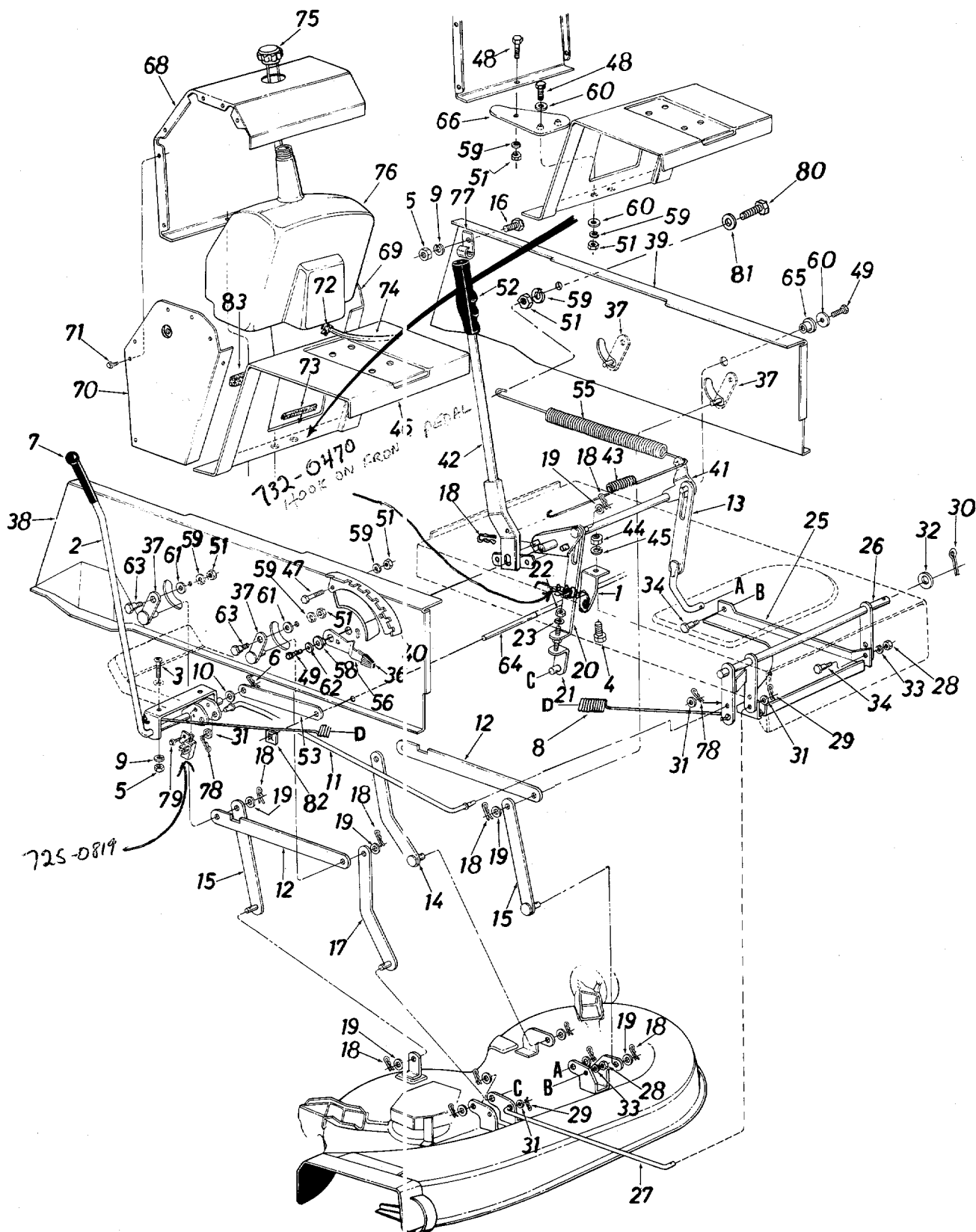
Models 701, 703 and 705



PARTS LIST FOR ELECTRICAL SYSTEM MODELS 701, 703 AND 705

REF. NO.	PART NO.	DESCRIPTION	REF. NO.	PART NO.	DESCRIPTION
1	725-0459	Circuit Breaker	10	725-0453	12 Volt Battery
2	725-0759	Spring Switch	11	725-0577	Safety Switch
3	725-0819	Safety Switch Dpst.	12	725-0916	Ground Wire
4	725-0201	Ignition Key	13	725-1058	Socket
5	725-0267	Ignition Switch	16	725-0963	Lamp
6	725-0634	Headlight Switch	17	725-1179	Wire Harness
7	722-0135	Foam Strip	18	725-1080	Electric Wire 27.0" Lg.
8	725-0925	Ammeter	19	725-0562	Electric Wire 32.5" Lg.
9	725-0994	Ground Wire 14.0" Lg.	20	725-0771	Solenoid

Models 700 thru 706 with 44" Deck

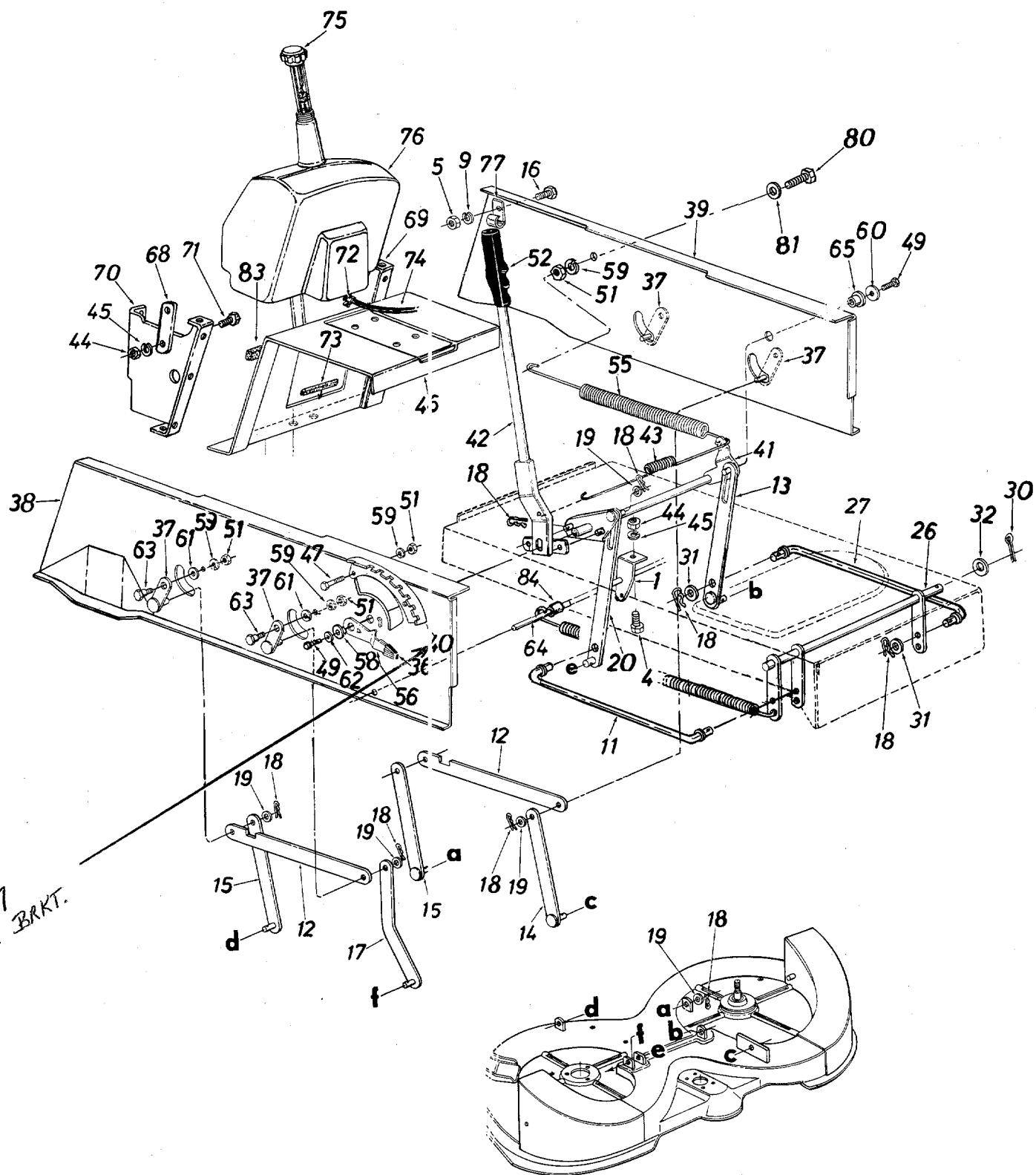


Models 700 thru 706 with 44" Deck

PARTS LIST FOR MODELS 700 THRU 706 LAWN TRACTORS WITH 44" DECK

REF. NO.	PART NO.	COLOR CODE	DESCRIPTION	NEW PART	REF. NO.	PART NO.	COLOR CODE	DESCRIPTION	NEW PART
1	16181		Spring Hanger Bracket		41	16463		Lift Shaft Ass'y.	N
2	16212		Deck Engagement Lever		42	16465		Lift Handle Brkt. Ass'y.	N
3	710-0323		Ass'y.		43	732-0498		Ext. Spring .56" I.D. x 32 Coils	N
4	710-0258		Truss Mach. Scr. 5/16-18 x .75" Lg.*		44	712-0287		Hex Nut 1/4-20 Thd.*	
5	712-0267		Hex Bolt 1/4-20 x .62" Lg.*		45	736-0329		L-Wash. 1/4" I.D.*	
6	714-0111		Hex Nut 5/16-18 Thd.*		46	16223		Hitch Plate	
7	720-0143		Cotter Pin 3/32" Dia. x 1.00" Lg.*		47	710-0118		Hex Bolt 5/16-18 x .75" Lg.*	
8	732-0531		Grip		48	710-0376		Hex Bolt 5/16-18 x 1.00" Lg. (Grade 5)	
9	736-0119		Ext. Spring .99" O.D. x 22" Lg.	N	49	710-0604		Hex Wash. TT-Tap Scr. 5/16-18 x .62" Lg.	
10	736-0272		L-Wash. 5/16" I.D.*		51	712-0267		Hex Nut 5/16-18 Thd.*	
11	747-0491		Fl-Wash. .510" I.D. x 1.0" O.D.		52	720-0157		Grip	
12	09735		Drive Deck Control Rod		53	16369		Link 1.0" x 7.5" x .19	
13	16178		Connecting Rod 3/16 x 1 x 12.5		55	732-0307		Ext. Spring .99" Dia. x 11.00" Lg.	
14	16209		Deck Lift Link Ass'y.		56	732-0412		Deck Lift—Down Stop	
15	16216		Deck Hanger Link Ass'y.—Rear L.H.		58	748-0176		Flange Brg. .630" I.D.	
16	710-0118		Deck Hanger Link Ass'y.		59	736-0119		L-Wash. 5/16" I.D.*	
17	16345		Deck Hanger Link Ass'y.—Front R.H.		60	736-0231		Fl-Wash. .344" I.D. x 1.125" O.D. x .125	
18	714-0101		Inter. Cotter Pin 1/2" Dia.		61	736-0264		Fl-Wash. .344" I.D. x .62" O.D. x .063	
19	736-0160		Fl-Wash. .531 I.D. x .93" O.D.		62	736-0231		Fl-Wash. .344" I.D. x 1.125" O.D.	
20	16063		Adj. Link Deck Lifting		63	738-0140		Shld. Bolt .437" Dia. x .180	
21	16342		Adj. Lower Link Ass'y.		64	738-0526		Running Board Rod	
22	712-0241		Hex Jam Nut 3/8-24 Thd.		65	741-0313		Flange Brg. .632" I.D.	
23	736-0169		L-Wash. 3/8" I.D.*		66	16315		Hitch Bar	
25	16214		Diagonal Brace		68	16238		Gas Tank Housing—Main Panel	N
26	16234		Stabilizer Shaft Ass'y.		69	16239		Side Panel—L.H.—Gas Tank	N
27	711-0777		Stabilizer Rod		70	16240		Side Panel—R.H.—Gas Tank	N
28	712-0798		Hex Nut 3/8-16 Thd.*		71	710-0351		Truss Mach. B-Tapp Scr. #10 x .50" Lg.	
29	714-0111		Cotter Pin 3/32" Dia. x 1.0" Lg.		72	726-0207		Hose Clamp—.406" Dia.	
30	714-0470		Cotter Pin 1/8" Dia. x 1.25" Lg.*		73	731-0511		Trim Strip—5" Lg.	
31	736-0117		Fl-Wash. .385" I.D. x .620" O.D.		74	751-0173		Gas Line—44" Lg.	
32	736-0156		Fl-Wash. .635" I.D. x 1.12" O.D.		75	751-0226		Gas Tank Cap	
33	736-0169		L-Wash. 3/8" I.D.*		76	751-0403		Gas Tank	N
34	738-0258		Shoulder Bolt 3/8-16		77	726-0175		Hose Clamp	
36	08540		Knob—Height Adj.		78	714-0507		Cotter Pin 3/32" Dia. x .75" Lg.	
37	09721		Pivot Link Ass'y.		79	710-0599		Hex Wash. Hd. Tap Scr. 1/4 x .50" Lg.	
38	14602		Side Panel Upper Frame—R.H.		80	710-0959		Hex Bolt 5/16-18 x 1.50" Lg.*	
39	14603		Side Panel Upper Frame—L.H.		81	736-0159		Fl-Wash. .344" I.D. x .875" O.D.	
40	16462		Index Brkt. (Deck Lift)	N	82	712-0247		Speed Nut for .500" Dia. Stud	
					83	722-0157		Foam Strip 3/8" x 1-1/8" x 1 1/2" Lg. (2 Req'd.)	

Models 700 thru 706 with 40" Deck

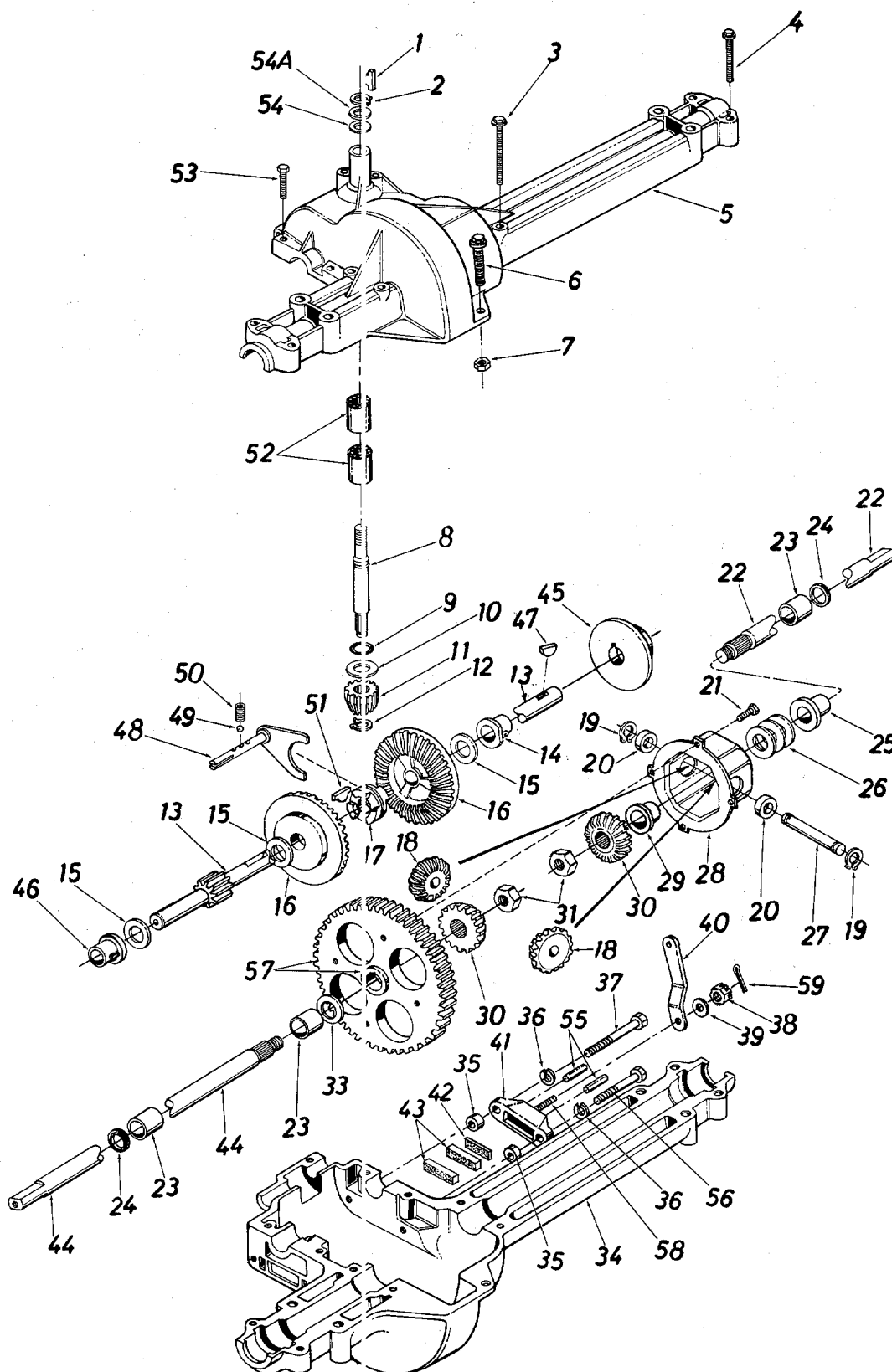


Models 700 thru 706 with 40" Deck

PARTS LIST FOR MODELS 700 THRU 706 LAWN TRACTORS WITH 40" DECK

REF. NO.	PART NO.	COLOR CODE	DESCRIPTION	NEW PART	REF. NO.	PART NO.	COLOR CODE	DESCRIPTION	NEW PART
1	16181		Spring Hanger Bracket		44	712-0287		Hex Nut 1/4-20 Thd.*	
4	710-0258		Hex Bolt 1/4-20 x .62" Lg.*		45	736-0329		L-Wash. 1/4" I.D.*	
5	712-0267		Hex Nut 5/16-18 Thd.*		46	16223		Hitch Plate	
8	732-0410		Ext. Spring .99" O.D. x 13.25" Lg.		47	710-0118		Hex Bolt 5/16-18 x .75" Lg.*	
9	736-0119		L-Wash. 5/16" I.D.*		49	710-0604		Hex Wash. TT-Tap Scr. 5/16-18 x .62" Lg.	
11	711-0738		Stabilizer Rod		51	712-0267		Hex Nut 5/16-18 Thd.*	
12	09735		Connecting Rod 3/16 x 1 x 12.5		52	720-0157		Grip	
					55	732-0307		Ext. Spring .99" Dia. x 11.00" Lg.	
13	14802		Deck Lift Link Ass'y.		56	732-0412		Deck Lift—Down Stop	
14	14804		Deck Hanger Link Ass'y.—Rear L.H.		58	748-0176		Flange Brg. .630" I.D.	
15	15373		Deck Hanger Link Ass'y.		59	736-0119		L-Wash. 5/16" I.D.*	
16	710-0118		Hex Bolt 5/16-18 x .75" Lg.*		61	736-0264		FI-Wash. .344" I.D. x .62" O.D. x .063	
17	14800		Deck Hanger Link Ass'y.—(Dog Leg)		62	736-0231		FI-Wash. .344" I.D. x 1.125" O.D.	
18	714-0101		Inter. Cotter Pin 1/2" Dia.		63	738-0140		Shld. Bolt .437" Dia. x .180	
19	736-0160		FI-Wash. .531 I.D. x .93" O.D.		64	738-0526		Running Board Rod	
20	14802		Deck Lift Link Ass'y.		65	741-0313		Flange Brg. .632" I.D.	
26	16234		Stabilizer Shaft Ass'y.		68	16330		Fender Support Brkt.	N
27	711-0738		Stabilizer Rod		69	15363		Grass Catcher Support Brkt.—L.H.	
30	714-0470		Cotter Pin 1/8" Dia. x 1.25" Lg.*		70	15364		Grass Catcher Support Brkt.—R.H.	
31	736-0117		FI-Wash. .385" I.D. x .620" O.D.		71	710-0289		Hex Bolt 1/4-20 x .50" Lg.*	
32	736-0156		FI-Wash. .635" I.D. x 1.12" O.D.		72	726-0207		Hose Clamp—.406" Dia.	
36	08540		Knob—Height Adj.		73	731-0511		Trim Strip—5" Lg.	
37	09721		Pivot Link Ass'y.		74	751-0173		Gas Line—44" Lg.	
38	14602		Side Panel Upper Frame—R.H.		75	751-0226		Gas Tank Cap	
39	14603		Side Panel Upper Frame—L.H.		76	751-0403		Gas Tank	N
40	16402 16557		Index Brkt. (Deck Lift)	N	77	726-0175		Hose Clamp	
41	16463		Lift Shaft Ass'y.	N	80	710-0959		Hex Bolt 5/16-18 x 1.50" Lg.*	
42	16465		Lift Handle Brkt. Ass'y.	N	81	736-0159		FI-Wash. .344" I.D. x .875" O.D.	
43	732-0498		Ext. Spring .56" I.D. x 32 Coils	N	83	722-0157		Foam Strip 3/8" x 1-1/8" x 1 1/2" Lg. (2 Req'd.)	
					84	711-0425		Spacer .523" I.D. x .640" O.D. x 1.95" Lg.	

Models 700, 701, 702, 703, 704, 705 and 706



SINGLE SPEED TRANSAXLE—R.H.
MODEL 717-1050

Models 700, 701, 702, 703, 704, 705 and 706

PARTS LIST FOR SINGLE SPEED TRANSAXLE RIGHT HAND 717-1050

REF. NO.	PART NO.	COLOR CODE	DESCRIPTION	NEW PART	REF. NO.	PART NO.	COLOR CODE	DESCRIPTION	NEW PART
1	714-0129		#4 Hi-Pro Key 3/32 x 5/8" Dia.		33	736-0188		Fl-Wash. .760" I.D. x 1.49" O.D.	
2	716-0115		Snap Ring .625" Shaft		34	717-0761		Lower Housing	
3	710-0854		Hex Bolt 1/4-20 x 1.75" Lg.*		35	750-0555		Spacer .53" O.D. x 3/8" Lg.	
4	710-0809		Hex Bolt 1/4-20 x 1.25" Lg.*		36	736-0329		L-Wash. 1/4" I.D.*	
5	717-0764		Upper Housing		37	710-0886		Hex Bolt 1/4-20 x 1.50" Lg. (Grade 5)	
6	710-0889		Hex Fl-Bolt 1/4-20 x .88" Lg.*		38	712-0335		Castle Nut 5/16-24 Thd.*	
7	712-0287		Hex Nut 1/4-20 Thd.*		39	736-0159		Fl-Wash. .344" I.D. x .875" O.D.	
8	717-0634		Input Shaft		40	717-0700		Actuating Arm—R.H.	
9	721-0178		Square Seal 5/8" I.D.		41	717-0679		Brake Yoke	
10	736-0335		Thrust Washer 5/8" I.D. x 1.25" O.D.		42	717-0682		Puck Plate	
11	717-0633		Pinion Input 14T		43	717-0678		Brake Puck	
12	716-0108		Retaining Ring 7/16" Ext.		44	717-1011		Axle L.H.	
13	717-0758		Drive Shaft—R.H.		45	717-0677		Brake Disc	
14	741-0336		Flange Brg. 5/8" I.D. x 3/4" Lg.*		46	741-0337		Flange Bearing 5/8" I.D. x 15/16" Lg.	
15	**		Fl-Wash. (See Below)		47	714-0161		Woodruff Key 3/16 x 5/8 HT	
16	717-0757		Bevel Gear 42T		48	717-0754		Shift Fork Ass'y.	
17	717-0667		Clutch Collar		49	741-0862		Ball Detent .250" Dia.	
18	717-1020		Miter Gear 15T—H.D.	N	50	732-0863		Spring Detent	
19	716-0142		Snap Ring		51	714-0169		#9 Hi-Pro Key 3/16" x 3/4" Dia. HT	
20	717-0690		Thrust Bearing 1/2" I.D. x 1.0" O.D.		52	741-0335		Needle Brg. 5/8" I.D. x 1/2" Lg.	
21	710-0862		Pan Head Scr. 1/4-20 x .50" Lg. w/Patch		53	710-0855		Hex Bolt 1/4-20 x 1.00" Lg.	
22	717-1012		Axle R.H.		54	736-0336		Fl-Wash. 5/8" I.D. x .030	
23	741-0340		Sleeve Bearing 3/4" I.D. x 1.0" Lg.		54A	736-0337		Fl-Wash. 5/8" I.D. x .040	
24	721-0179		Oil Seal 3/4" I.D.		55	741-0343		Actuating Pin 5/16" Dia.	
25	741-0339		Flange Bearing 3/4" I.D. x 15/16" Lg.		56	710-0886		Hex Bolt 1/4-20 x 1.50" Lg. (Grade 5)	
26	736-0188		Fl-Wash. .760" I.D. x 1.49" O.D.		57	717-0767		Differential Gear 72T Ass'y. w/Bearing	
27	717-0673		Cross Shaft		58	717-0681		Sq. Hd. Bolt 5/16-24 Thd.	
28	717-0777		Differential Housing Ass'y.		59	1544-013		Cotter Pin 3/32" Dia. x .50" Lg.	
29	—		Comes with Ref. 28						
30	717-1019		Miter Gear—H.D.	N					
31	712-0200		Hex Ins. L-Nut 1/2-20 Thd.		—	737-0148		Grease—Shell (10 oz.)	

**Ref. No. 15 736-0349 Fl-Wash. 5/8" I.D. x 1.0" O.D. x .020 Thk.
 736-0336 Fl-Wash. 5/8" I.D. x 1.0" O.D. x .030 Thk.
 736-0337 Fl-Wash. 5/8" I.D. x 1.0" O.D. x .040 Thk.

PARTS INFORMATION

POWER EQUIPMENT PARTS AND SERVICE

Parts and service are available through the authorized service firms listed below. All orders should specify the model number of your unit, part numbers, description of parts and the quantity of each part required.

NOTE: If any parts are found to be missing or defective upon assembly of this unit, write to advise the factory so that immediate replacement can be made.

ALABAMA	BIRMINGHAM	
Auto Electric & Carburetor Co.	2625 4th Ave. S.	35233
ARKANSAS	NORTH LITTLE ROCK	
Sutton's Lawn Mower Shop	5301 Roundtop Drive	
	Box 368, Rt. 4	72117
CALIFORNIA	PORTERVILLE	
Billious	75 North D Street	93257
COLORADO	DENVER	
Spitzer Industrial Products Co.	6601 N. Washington St.	80229
FLORIDA	JACKSONVILLE	
Radco Distributors	4909 Victor St.	
	Box 5459	32207
	HIALEAH	
Small Eng. Dist.	7995 W. 26th Court	33016
GEORGIA	EAST POINT	
East Point Cycle & Key Inc.	2834 Church St.	30344
ILLINOIS	LYONS	
Keen Edge Co.	8615 Ogden Ave.	60534
INDIANA	ELKHART	
Parts & Sales Inc.	2101 Industrial Pkwy.	46516
IOWA	DUBUQUE	
Power Lawn & Garden Equip.	2551 J.F. Kennedy Ave.	52001
LOUISIANA	NEW ORLEANS	
Suhren Engine Co.	8330 Earhart Blvd.	70118
MARYLAND	TAKOMA PARK	
Center Supply Co.	6867 New Hampshire Ave.	20912
MASSACHUSETTS	SPRINGFIELD	
Morton B. Collins Co.	300 Birnie Ave.	01107
MICHIGAN	LANSING	
Lorenz Service Co.	2500 S. Pennsylvania	48910
	MOUNT CLEMENS	
Power Equipment Dist.	340 Hubbard	48043
MINNESOTA	HOPKINS	
Hance Distributing Inc.	420 Excelsior Ave. W.	55343
MISSOURI	KANSAS CITY	
Automotive Equip. Service	3117 Holmes St.	64109
	ST. JOSEPH	
Ross-Frazier Supply Co.	8th and Monterey	64503
	ST. LOUIS	
Henzler, Inc.	2015 Lemay Ferry Rd.	63125
NEW JERSEY	BELLMAWR	
Lawnmower Parts Inc.	717 Creek Rd.	03030
NEW MEXICO	ALBUQUERQUE	
Spitzer Eng. & Parts Co.	1023 Third Ave. N.W.	87103
NEW YORK	CARTHAGE	
Gamble Dist., Inc.	West End Ave.	13619

BRIGGS AND STRATTON, TECUMSEH AND PEERLESS PARTS AND SERVICE

Briggs & Stratton, Tecumseh and Peerless parts and service should be handled by your nearest authorized engine service firm. Check the yellow pages of your telephone directory under the listing **Engines—Gasoline**, Briggs & Stratton or Tecumseh Lauson.

NORTH CAROLINA	GOLDSBORO	
Smith Hardware Co.	515 N. George St.	27530
	GREENSBORO	
Dixie Sales Company	335 N. Green	27402
OHIO	CARROLL	
Stebe's Mid-State Mower Supply	Box 366, 71 High St.	43112
	CLEVELAND	
Bleckrie, Inc.	7900 Lorain Ave.	44102
	WADSWORTH	
National Central	687 Seville Rd.	44281
	YOUNGSTOWN	
Burton Supply Co.	1301 Logan Ave.	44501
	Box 929	
OKLAHOMA	MUSKOGEE	
Victory Motors, Inc.	605 S. Cherokee	74401
OREGON	PORTLAND	
Kenton Supply Co.	8216 N. Denver Ave.	97217
PENNSYLVANIA	HARRISBURG	
EECO Inc.	4021 N. 6th St.	17110
	WILLOW GROVE	
Thompson Rubber Co.	850 Davisville Rd.	19090
	PITTSBURGH	
Bluemont Co.	11125 Frankstown Rd.	15235
	PUNXSUTAWNEY	
Frank Roberts & Sons	R.D. 2	15767
	SCRANTON	
Scranton Auto Ignition Co.	1133-35 Wyoming Ave.	18509
TENNESSEE	KNOXVILLE	
Ace Distributors	2103 Magnolia	37911
	MEMPHIS	
American Sales & Service, Inc.	3035-43 Bellbrook	38116
TEXAS	DALLAS	
Marr Brothers, Inc.	423 E. Jefferson	75203
	FORT WORTH	
Woodson Sales Corp.	6733 Baker Blvd.	76118
	Hwy. 10	
	HOUSTON	
Bullard Supply Co.	2409 Commerce St.	77003
	SAN ANTONIO	
Engine House Inc.	8610 Botts Lane	
	P.O. Box 17867	78217
UTAH	SALT LAKE CITY	
Powered Products	1661 N. Beck St.	84116
VIRGINIA	ASHLAND	
RBI Corp.	101 Cedar Ridge Dr.	23005
WASHINGTON	SEATTLE	
Equip. Northwest	1410 14th Ave.	98122
WISCONSIN	MILWAUKEE	
Wisconsin Magneto Inc.	4727 N. Teutonia St.	53209

WARRANTY PARTS AND SERVICE POLICY

(0685)

The purpose of warranty is to protect the customer from defects in workmanship and materials, defects which are NOT detected at the time of manufacture. It does not provide for the unlimited and unrestricted replacement of parts. Use and maintenance are the responsibility of the customer. The manufacturer cannot assume responsibility for conditions over which it has no control. Simply put, if it's the manufacturer's fault, it's the manufacturer's responsibility; if it's the customer's fault, it's the customer's responsibility.

CLAIMS AGAINST THE MANUFACTURER'S WARRANTY INCLUDES:

1. Replacement of Missing Parts on new equipment.
2. Replacement of Defective Parts within the warranty period.
3. Repair of Defects within the warranty period.

All claims MUST be substantiated with the following information:

1. Model Number of unit involved.
2. Date unit was purchased or first put into service.
3. Date of failure.
4. Nature of failure.