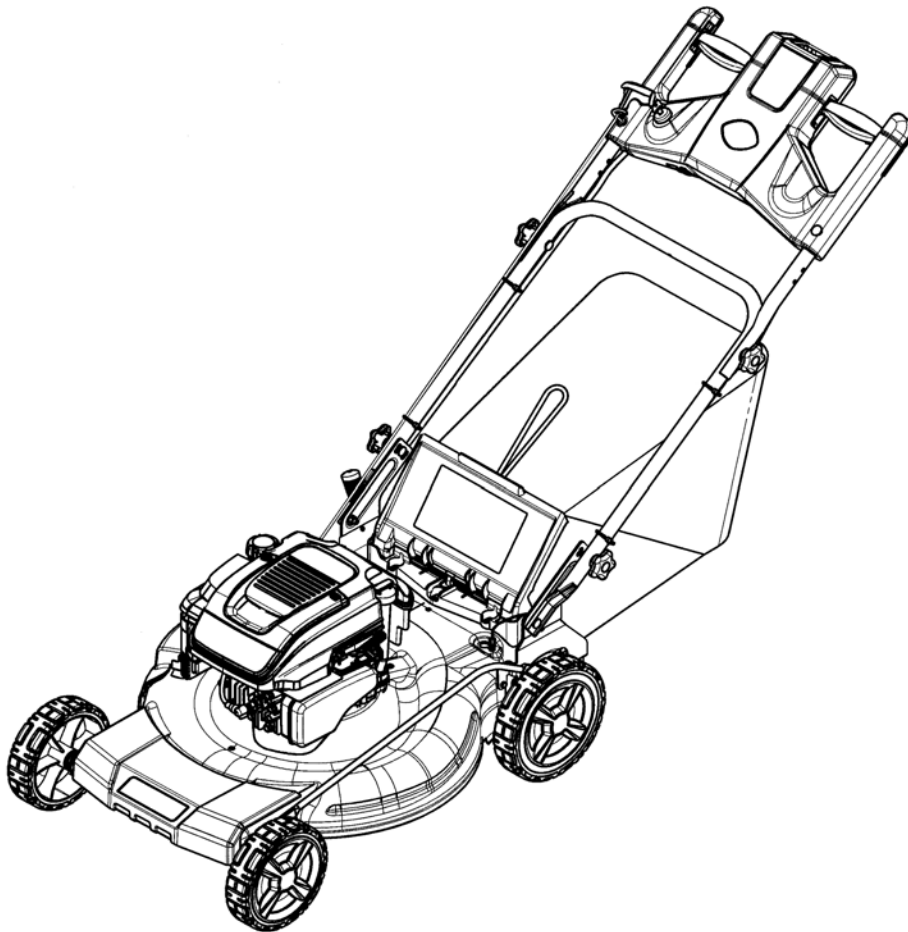


*Parts Manual for*  
**SNAPPER®**

**22" VARIABLE SPEED 3N1  
WALK BEHIND MOWERS**



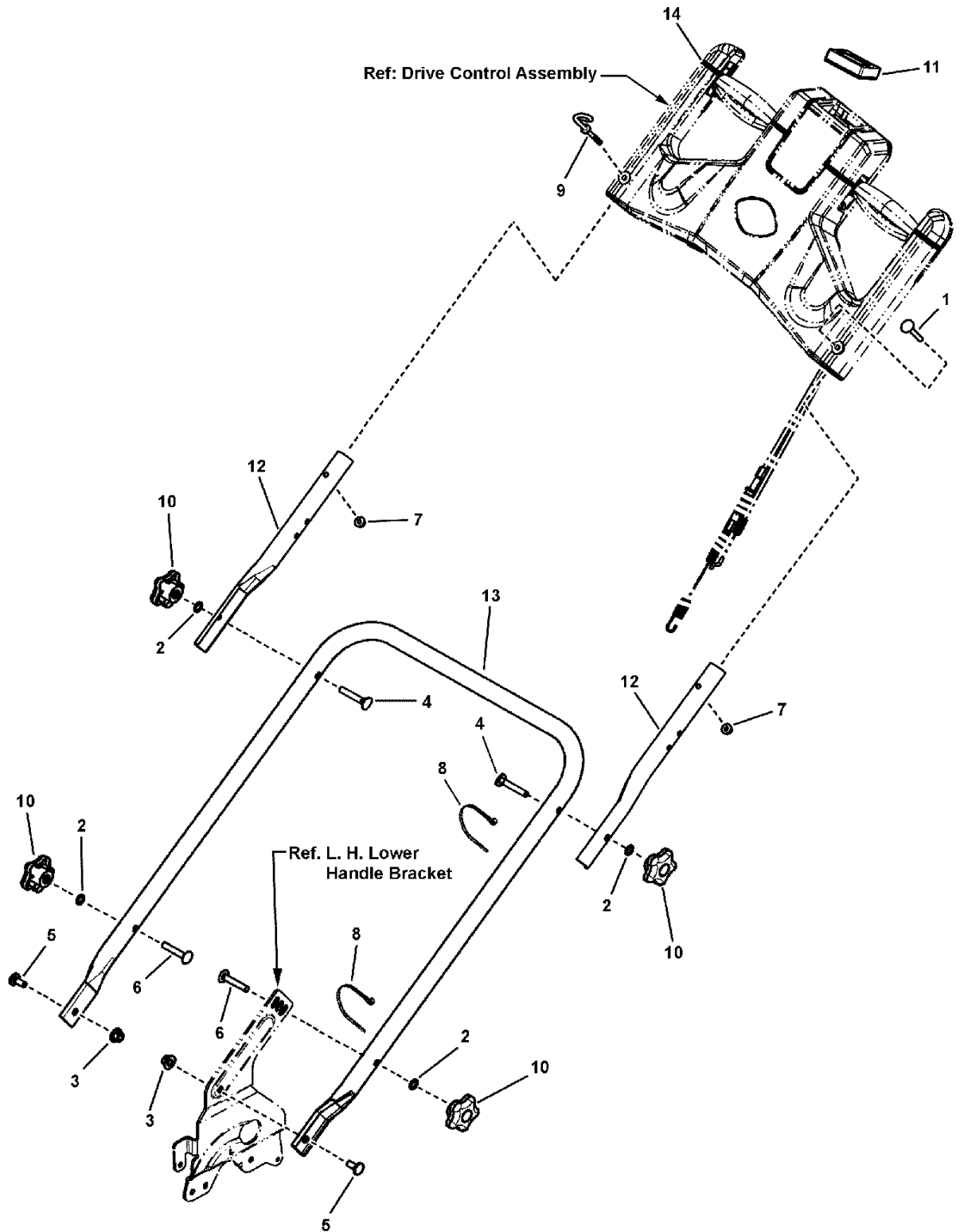
<i>Model No.</i>	<i>Description</i>
7800756	NSXPV2270
7800757	NSXPV2270E
7800707	SPXV2270
7800708	SXPV2270E

Not for  
Reproduction

<b>PAGE</b>	<b>GROUP</b>
4	Handle & Controls Group (Manual Start)
6	Drive Control Assembly (Manual Start)
8	Handle & Controls Group (Electric Start)
10	Drive Control Assembly (Electric Start)
12	Mower Deck Group
14	Engine, Blade & Grass Bag Group
16	Transmission & Wheels Group
18	Decals Group

Not for  
Reproduction

**Handle & Controls Group (Manual Start)**



**Handle & Controls Group (Manual Start)**

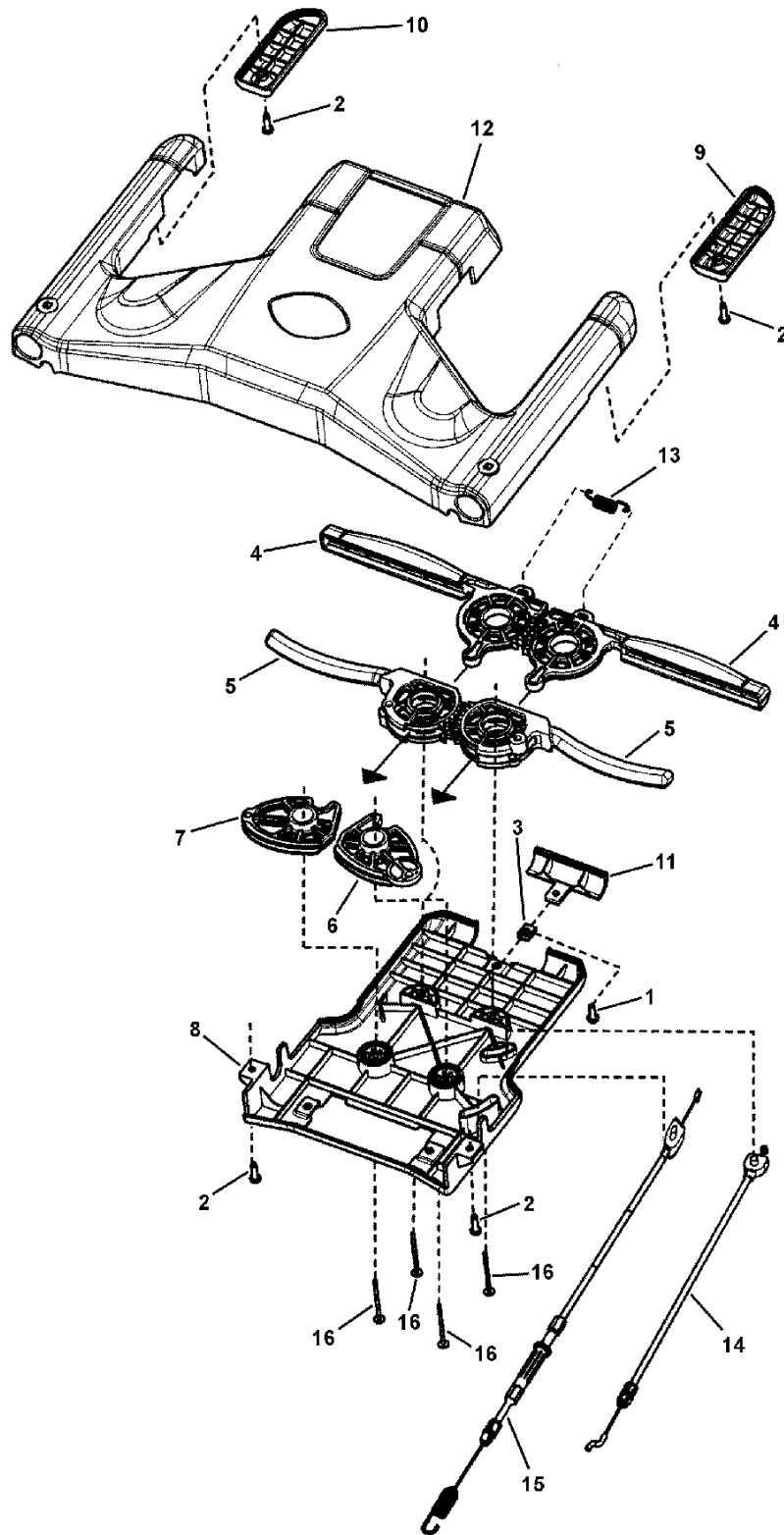
<b>Item</b>	<b>Part No</b>	<b>Qty</b>	<b>Description</b>
1	7090015	1	BOLT, 1/4-20 x 1-3/4" Round Head Square Neck, GR 2, YZ
2	7090391	4	WASHER, 5/16" Internal Tooth Lock
3	7090951	2	NUT, 5/16-18 Large Flange Center Lock
4	7091189	2	BOLT, 5/16-18 x 2" Curved Head Square Neck, GR 2
5	723873	2	BOLT, 5/16-18 x 3/4" Square Neck Carriage, GR 5
6	1931338	2	BOLT, 5/16-18 x 1-3/4" Round Head Square Neck Carriage
7	2860694	2	NUT, 1/4-20 Hex Flange (Esna), YZ
8	7024649	2	WIRE TIE, 11 Inch Standard Black Nylon
9	7101410	1	ROPE GUIDE, (1/4-20 thread)
10	7102990	4	KNOB, Handle, (5/16-18 internal threads) 5-Prong
11	7103774	1	METER, Service Indicator
12	7300649BH	2	HANDLE, Connecting, 21" / 22" WBM
13	7301189BH	1	HANDLE, Lower
14	7501967	1	ASSEMBLY, Drive Control, MY2010 Walk

Not for  
Reproduction

**Footnotes:**

7800707, 7800756 & 7800774

**Drive Control Assembly (Manual Start)**



## Drive Control Assembly (Manual Start)

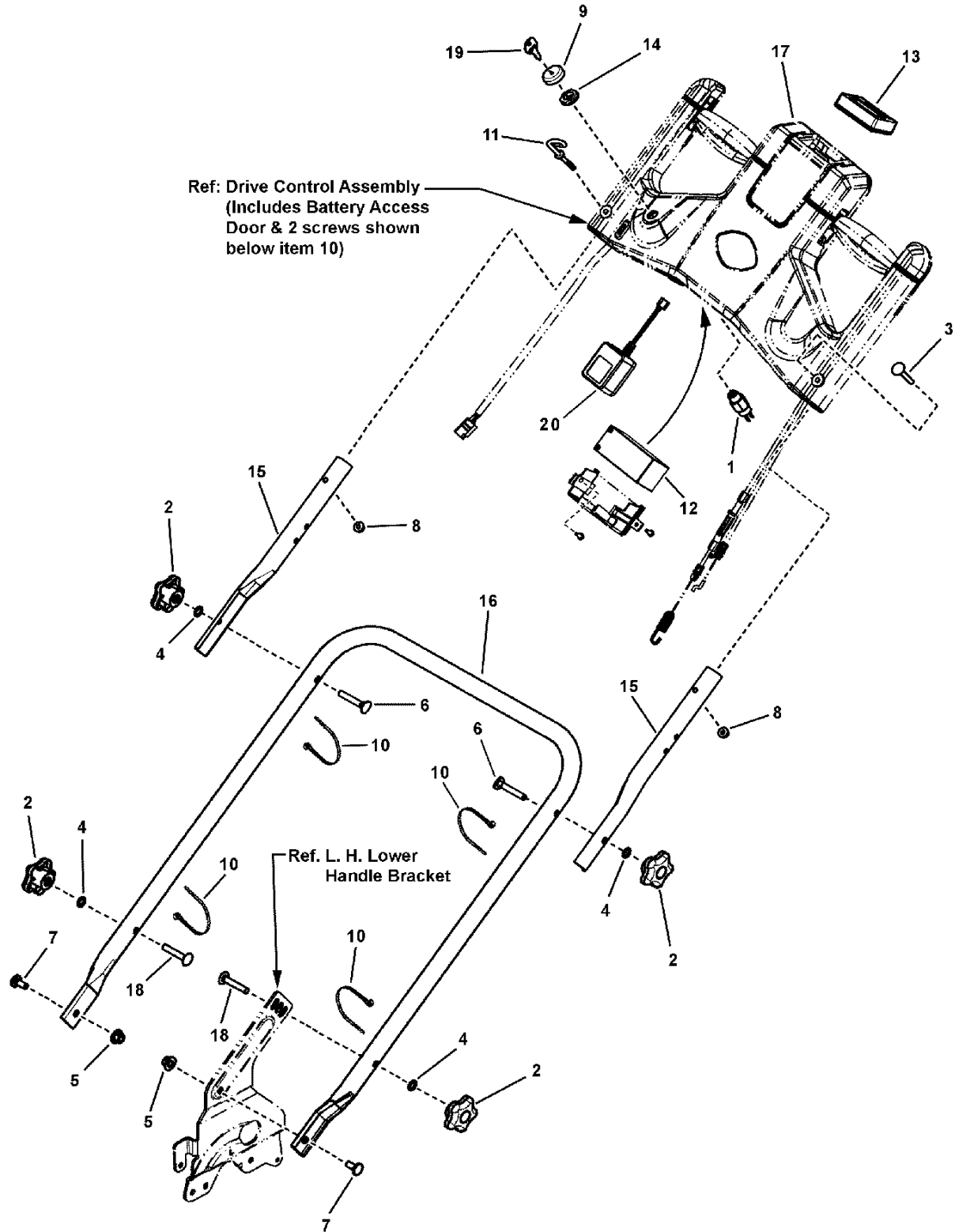
Item	Part No	Qty	Description
1	7091075	1	SCREW, #10-24 x 5/8" Hex Washer Self-Tap, GR 5 BZ
2	7091195	4	SCREW, #10-16 x 3/4" Pan Head Self-Tap Combo, BZ
3	1960593	1	NUT, #10-24 Speed Retainer w/extrusion
4	7102803	2	LEVER, Drive Control
5	7102804	2	LEVER, OPC, Control
6	7102805	1	CAM, Drive, LH
7	7102806	1	CAM, Drive, RH
8	7103325	1	CONTROL PANEL, Bottom, MY Mower
9	7103326	1	PANEL, Bottom Control, WBM, RH
10	7103327	1	PANEL, Bottom Control, WBM, LH
11	7103456	1	PANEL, Access, Maintenance Reminder
12	7104294	1	PANEL, Top Control
13	7104689	1	SPRING, Tension, Drive Control
14	7104752	1	CABLE, OPC, 2010 NXT
15	7105092	1	CABLE, Control, 2010 NXT (Was 7103770)
16	7900081	4	SCREW, #10-16 x 2" Hi-Lo Cross Pan Head

Not for  
Reproduction

### Footnotes:

Model pt. #'s: 7800707, 7800756 & 7800774

**Handle & Controls Group (Electric Start)**





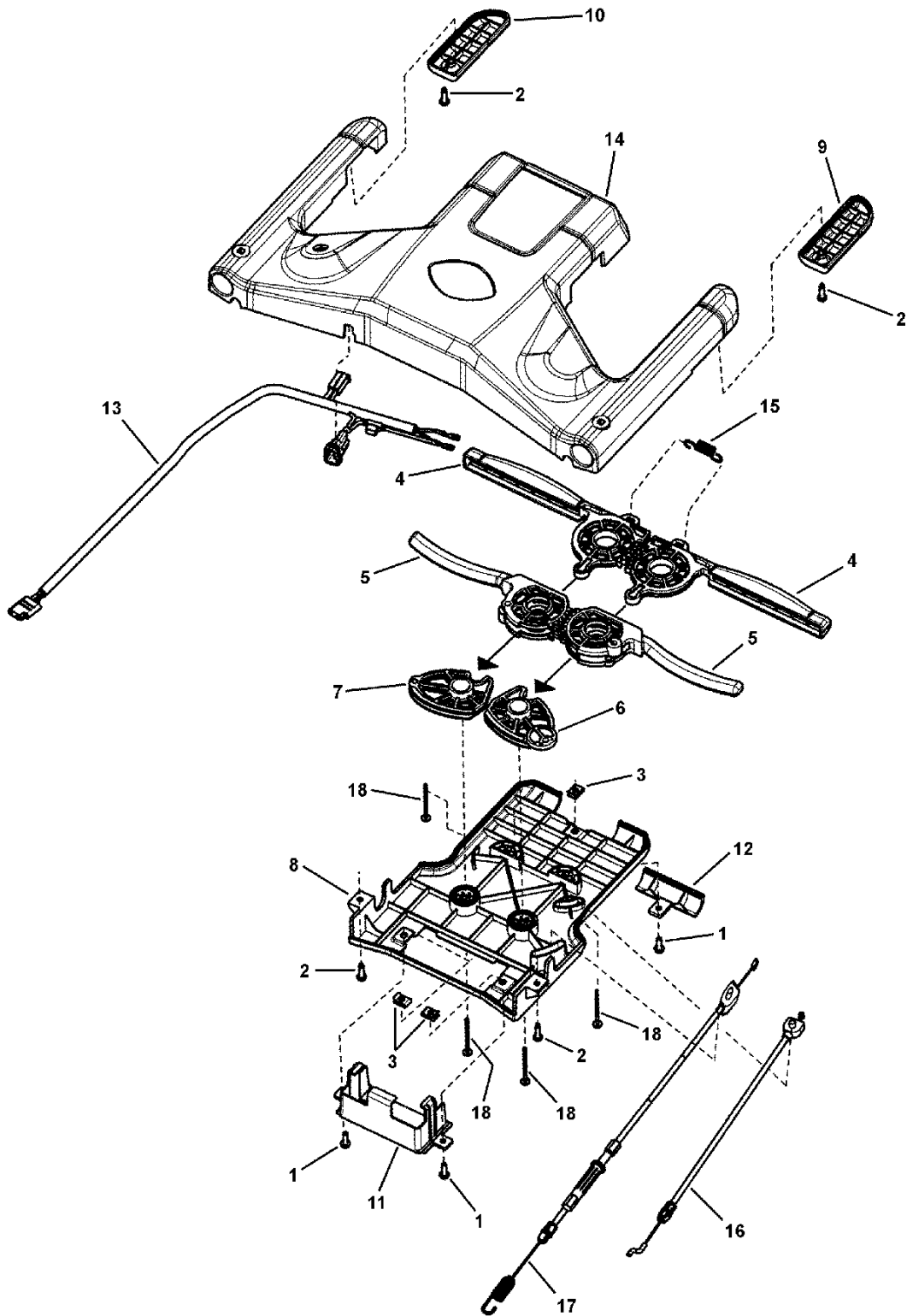
## Handle & Controls Group (Electric Start)

Item	Part No	Qty	Description
1	7028765	1	SWITCH, ES, Start/Run
2	7102990	4	KNOB, Handle, (5/16-18 internal threads) 5-Prong
3	7090015	1	BOLT, 1/4-20 x 1-3/4" Round Head Square Neck, GR 2, YZ
4	7090391	4	WASHER, 5/16" Internal Tooth Lock
5	7090951	2	NUT, 5/16-18 Large Flange Center Lock
6	7091189	2	BOLT, 5/16-18 x 2" Curved Head Square Neck, GR 2
7	1931333	2	BOLT, 5/16-18 x 3/4" Round Head Short Square Neck Carriage, GR 5
8	2860694	2	NUT, 1/4-20 Hex Flange (Esna), YZ
9	7023506	1	BEZEL, Black
10	7024649	4	WIRE TIE, 11 Inch Standard Black Nylon
11	7101410	1	ROPE GUIDE, (1/4-20 thread)
12	7102931	1	BATTERY, 12V DC, 1.3A / HR
13	7103774	1	METER, Service Indicator
14	7104149	1	NUT, Plastic, 5/8-32
15	7300649BH	2	HANDLE, Connecting, 21" / 22" WBM
16	7301189BH	1	HANDLE, Lower
17	7502046	1	ASSEMBLY, Drive Control, Snapper Electric Start
18	1931338	2	BOLT, 5/16-18 x 1-3/4" Short Square Neck Carriage, GR 5
19	7011138	1	KEY, Ignition, Pair
20	7103988	1	CHARGER, Battery, 14V 260MA, 120V AC

### Footnotes:

Model pt. #'s: 7800708, 7800757 & 7800775

**Drive Control Assembly (Electric Start)**



## Drive Control Assembly (Electric Start)

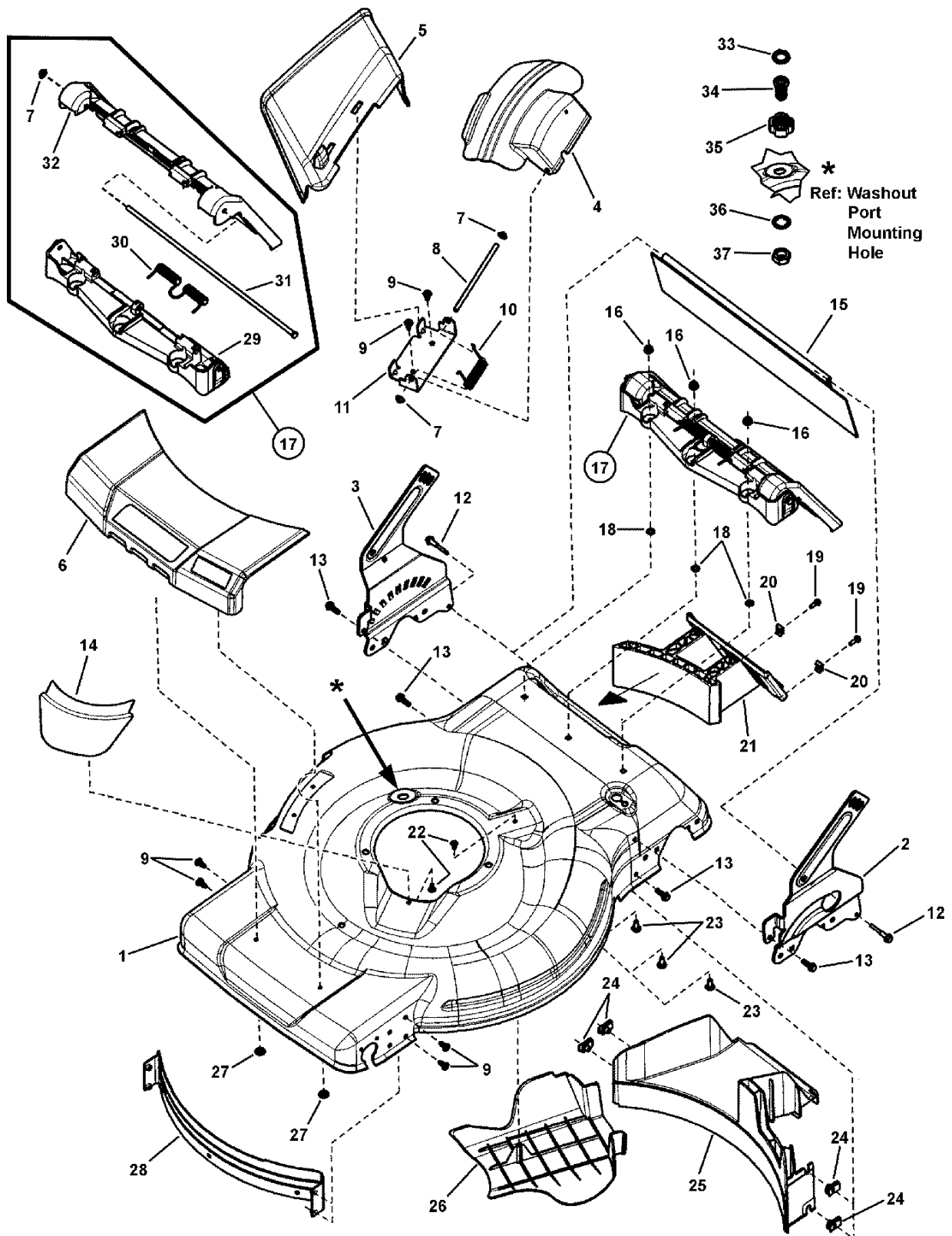
Item	Part No	Qty	Description
1	7091075	3	SCREW, #10-24 x 5/8" Hex Washer Self-Tap, GR 5 BZ
2	7091195	4	SCREW, #10-16 x 3/4" Pan Head Self-Tap Combo, BZ
3	1960593	3	NUT, #10-24 Speed Retainer w/extrusion
4	7102803	2	LEVER, Drive Control
5	7102804	2	LEVER, OPC, Control
6	7102805	1	CAM, Drive, LH
7	7102806	1	CAM, Drive, RH
8	7103325	1	CONTROL PANEL, Bottom, MY Mower
9	7103326	1	PANEL, Bottom Control, WBM, RH
10	7103327	1	PANEL, Bottom Control, WBM, LH
11	7103345	1	ACCESS DOOR, Battery Control Panel, WBM
12	7103456	1	PANEL, Access, Maintenance Reminder
13	7104395	1	HARNESS, Snapper React Drive
14	7104396	1	PANEL, Top Control
15	7104689	1	SPRING, Tension, Drive Control
16	7104752	1	CABLE, OPC, 2010 NXT
17	7105092	1	CABLE, Control, 2010 NXT (Was 7103770)
18	7900081	4	SCREW, #10-16 x 2" Hi-Lo Cross Pan Head

Not for  
Reproduction

### Footnotes:

Model pt. #'s: 7800708, 7800757 & 7800775

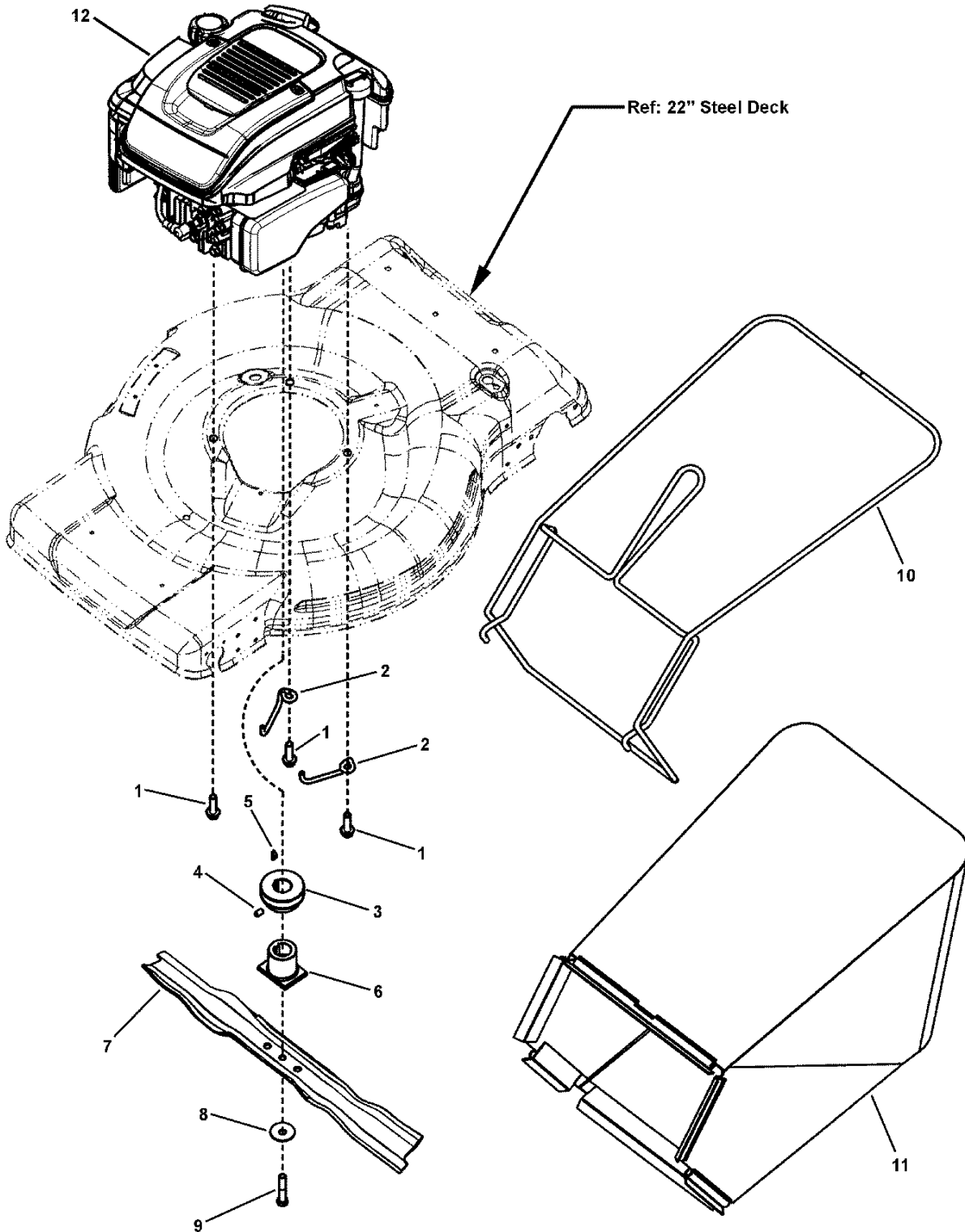
# Mower Deck Group



<b>Item</b>	<b>Part No</b>	<b>Qty</b>	<b>Description</b>
1	7600155D	1	DECK, 22", Rear Wheel Drive, Washout (used on 7800756 & 7800707 models)
1	7600159D	1	DECK, 22", Rear Wheel Drive, Washout, Electric Start (used on 7800757 & 7800708 models)
2	7300885BH	1	BRACKET, Lower Handle, LH, 22 WBM
3	7300915BH	1	BRACKET, Lower Handle, RH, 22 WBM
4	7103298	1	COVER, Mulching
5	7103299	1	CHUTE, Side Discharge, 22" WBM
6	7103295	1	COVER, Front, Push/Rear Wheel Drive
7	7091020	3	PUSHNUT, 1/4"
8	7101067	1	ROD, Pivot
9	7900067	6	SCREW, 1/4-20 x .550 Self-Tap (Torx)
10	722507	1	SPRING, Torsion
11	7300855D	1	BRACKET, Chute
12	7900073	2	BOLT, 1/4-20 x 1-1/2" Shoulder
13	7090699	4	BOLT, 1/4-20 x 3/4" Hex Flange Lock, GR 5
14	7103296	1	DEBRIS SHIELD, Front
15	7103323	1	GUARD, Rear 22"
16	722398	3	NUT, 1/4-20 Hex Flange Lock
17	7501541	1	ASSEMBLY, Door, 22" WBM (Incl. items 7, 29, 30, 31 & 32)
18	1960518	3	BOLT RETAINER, 1/4"
19	7091075	2	SCREW, #10-24 x 5/8" Hex Washer Face Self-Tap, GR 5
20	1960593	2	NUT, #10-24 Retainer Speed w/extrusion
21	7103453	1	PLUG, Mulching, 22" Deck
22	7900018	2	SCREW, Round Washer Head Torx, Hi-Lo
23	7090803	3	BOLT, 1/4-20 x 5/8" Flat Head Square Neck, GR 5
24	7023295	4	U-NUT, 1/4-20
25	7103293	1	BAFFLE, Rear, Rear Wheel Drive WBM
26	7104819	1	BELT COVER, Rear Drive (Was 7103294)
27	7900079	2	PUSH NUT, 3/16"
28	7301020	1	BAFFLE, Front
29	7103292	1	HINGE, Rear Discharge Door
30	7103309	1	SPRING, Torsion, Rear Door
31	7103322	1	ROD, Pivot, Rear Door
32	7103291	1	DOOR, Rear Discharge
33	7103957	1	WASHER, Hose
34	7103804	1	ADAPTOR, Washout Port, WBM
35	7103919	1	COUPLING, Hose
36	7091546	1	WASHER, 5/8" Internal Tooth Lock YZ (Was 7090880)
37	1960716	1	NUT, 5/8-11, NC-2B Black Hex Jam

**Footnotes:**

**Engine, Blade & Grass Bag Group**



<b>Item</b>	<b>Part No</b>	<b>Qty</b>	<b>Description</b>
1	7900072	3	SCREW, 3/8-16 x 1-1/4" Hex Washer Self-Tap
2	7103517	2	BELT GUIDE, Engine
3	7100437	1	PULLEY, Engine
4	7092086	1	SET SCREW, 5/16-18 x 1/2" Hex Recess
5	7091214	1	KEY, #HP-506 Hi-Pro
6	7101414	1	BLADE HUB, 21" WBM, Rear Drive, 2 Position
7	7103288BZ	1	BLADE, Wave, Steel Deck
8	7012063	1	WASHER, Cone
9	7090167	1	SCREW, 3/8-24 x 2" Hex Head Cap, GR 5
10	7103305A	1	BAG FRAME, Rear Discharge (weldment)
11	7103375	1	GRASS BAG, 22" Rear Discharge
12	128L02 0115 F1	1	* ENGINE, B&S, 700 Series, X-Spec (used on 7800756 model)
12	128L05 0116 F1	1	* ENGINE, B&S, 700 Series, ES, X-Spec (used on 7800757 model)
12	128T02 0740 B3	1	* ENGINE, B&S, 700 Series, B3, X-Spec (used on 7800707 model)
12	128T05-0110-B1	1	* ENGINE, B&S, 700 Series, Quantum, ES (used on 7800708 model)

Not for  
Reproduction

**Footnotes:**

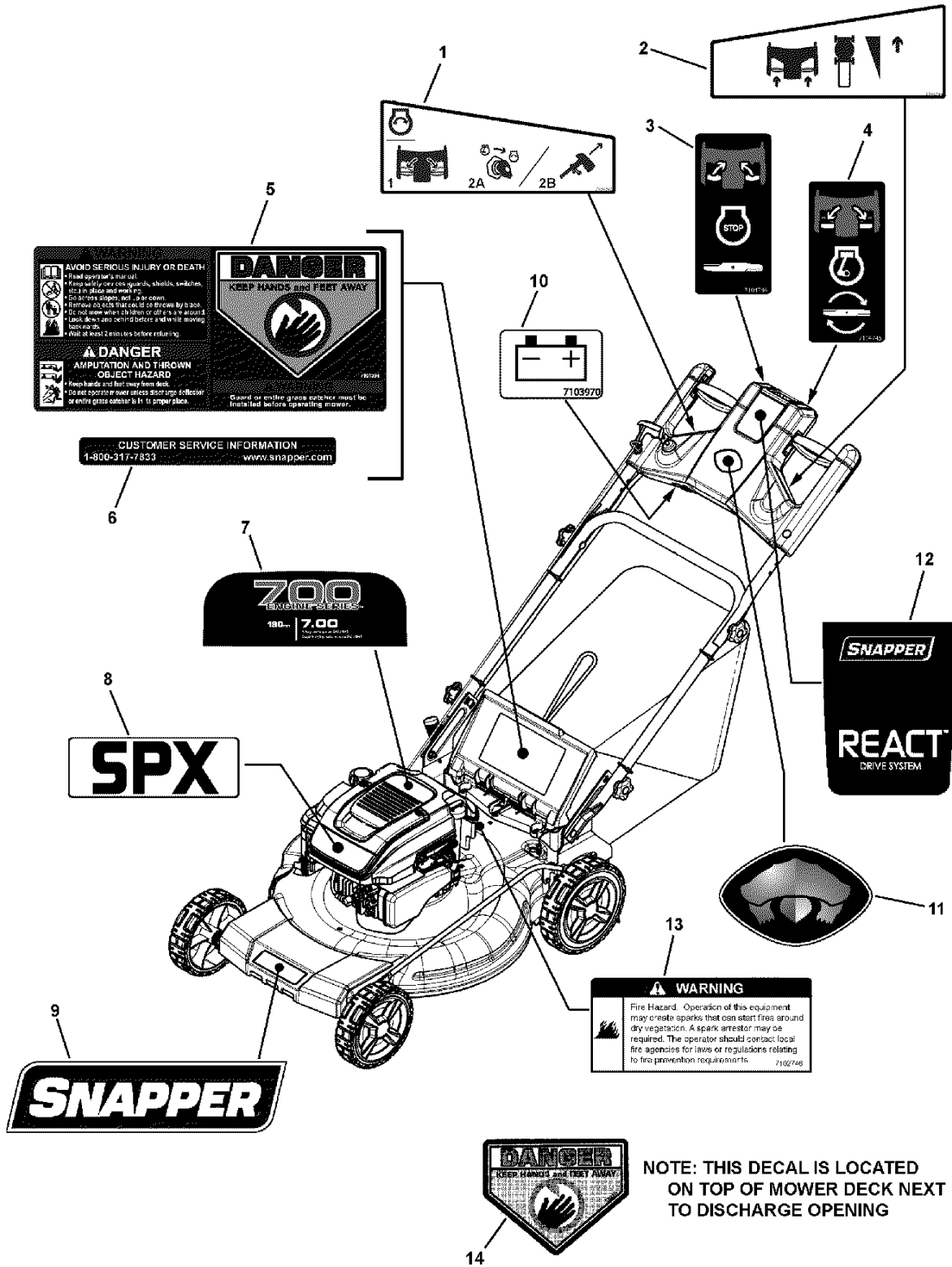
NOTE: \* Purchase engine parts from engine manufacturer dealer.





<b>Item</b>	<b>Part No</b>	<b>Qty</b>	<b>Description</b>
1	7103312	1	TRANSMISSION, Variable Speed, Rear Wheel Drive
2	7400259	1	WELDMENT, Rear Crossbar, RWD
3	7400306	1	WELDMENT, Front Axle
4	7091195	2	SCREW, #10-16 x 3/4" Pan Head Self-Tap, Combo
5	7100863	1	BELT GUIDE, Transmission
6	7103364	1	BELT, 3L, Traction Drive, 22" WBM, RWD (3L Sect., 33.83" Effective Length)
7	7091585	5	NUT, 3/8-16 Hex Center Lock, YZ
8	7100240	1	PULLEY, Transmission Variable Speed, LC WBM
9	7101350	4	HUBCAP, 8" & 9" Spoked Wheel, Snapper Cool Gray (was 7102507)
10	722604	4	WASHER, 1" OD x .387 ID, Flat
11	7027999	2	RETAINING RING, .452-.463 ID (Waldes Truarc 5100-50 or equivalent)
12	7100861	2	PIN, Axle
13	7100820	2	GEAR, Pinion
14	7014341	2	RETAINING RING, .392 Ext. (Waldes No. 5133-50 or equiv.)
15	7091591	4	BOLT, 5/16-18 x 1" Hex Flange Lock, GR 5, YZ
16	7103290	2	HOLDER, Bearing, Rear Wheel Drive
17	7078243	2	BALL BEARING, Axle
18	1931277	4	NUT, 5/16-18 Hex Flange Lock, GR 5, YZ (Was 7091601)
19	7500539	2	WHEEL ASSEMBLY, 9 x 2 Drive, Snapper Tread, w/Ext Gear (includes ball bearings #7101380, gear #7100914, & screws #7091196)
20	7101367	2	SHIELD, Dust, 21" WBM, RD
21	724887	1	GRIP, Height-Of-Cut
22	7103289	1	LEVER, Spring, Height-Of-Cut
23	7900067	6	SCREW, 1/4-20 x .550 Self-Tap (Torx)
24	7101774	2	SHOULDER BOLT, #10-24
25	7103306D	1	ROD, Lifter Link, WBM
26	7091552	2	WASHER, .219 x .500 x .049 Flat
27	7091290	2	NUT, #10-24 UNC-2B Nyloc
28	7104525	2	SPACER, Shaft, 1/2"
29	7104518	4	BUSHING, Bearing, Rear Wheel Drive
30	7500540	2	WHEEL ASSEMBLY, 8 x 2 Idle, Snapper Tread, Charcoal Gray (includes two ball bearings, p/n 7101380)

**Footnotes:**



---

<b>Item</b>	<b>Part No</b>	<b>Qty</b>	<b>Description</b>
1	7104747	1	DECAL, Start, React
2	7104744	1	DECAL, Drive, React
3	7104746	1	DECAL, Stop, React
4	7104745	1	DECAL, Run, React
5	7101394	1	DECAL, Warning, Rear Discharge Door
6	7102275	1	DECAL, Customer Service, MY08, Snapper
7	7104852	1	DECAL, Briggs Engine, 700 Series
8	7104875	1	DECAL, Briggs Engine, Front Cover "SPX" Series
9	7103963	1	DECAL, Front Shroud, Snapper Logo
10	7103970	1	DECAL, Battery
11	7103965	1	DECAL, Handle, Domed Turtle
12	7104762	1	DECAL, Handle, React Drive
13	7102746	1	DECAL, Spark Arrestor
14	7013010	1	DECAL, Danger, Cut Finger

Not for  
Reproduction

**Footnotes:**





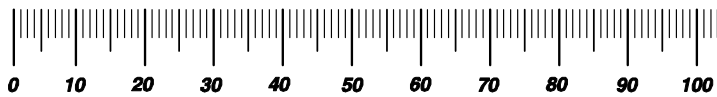


# Hardware Identification & Torque Specifications

Torque Specification Chart								
FOR STANDARD METRIC MACHINE HARDWARE (Tolerance ± 20%)								
Property Class	5.6		8.8		10.9		12.9	
	Class 5.6		Class 8.8		Class 10.9		Class 12.9	
Size Of Hardware	in/lbs		in/lbs		in/lbs		in/lbs	
	ft/lbs	Nm.	ft/lbs	Nm.	ft/lbs	Nm.	ft/lbs	Nm.
M3	5.88	.56	13.44	1.28	19.2	1.80	22.92	2.15
M4	13.44	1.28	30.72	2.90	43.44	4.10	52.56	4.95
M5	26.4	2.50	60.96	5.75	5.97	8.10	7.15	9.7
M6	44.64	4.3	7.3	9.9	10.3	14	12.1	16.5
M7	5.2	7.1	12.1	16.5	16.9	23	19.9	27
M8	7.7	10.5	17.7	24	25	34	29	40
M10	15	21	35	48	50	67	59	81
M12	26	36	61	83	86.2	117	103	140
M14	42	58	101	132	136	185	162	220
M16	64	88	147	200	210	285	250	340
M18	89	121	202	275	287	390	346	470
M20	126	171	290	390	405	550	486	660
M22	169	230	390	530	559	745	656	890
M24	217	295	497	375	708	960	840	1140
M27	320	435	733	995	1032	1400	1239	1680
M30	435	590	995	1350	1401	1900	1681	2280
M33	590	800	1349	1830	1902	2580	2278	3090
M36	759	1030	1740	2360	2441	3310	2935	3980
M39	988	1340	2249	3050	3163	4290	3798	5150

Torque Specification Chart						
FOR STANDARD MACHINE HARDWARE (Tolerance ± 20%)						
Hardware Grade	No Marks		SAE Grade 5		SAE Grade 8	
	SAE Grade 2		SAE Grade 5		SAE Grade 8	
Size Of Hardware	in/lbs		in/lbs		in/lbs	
	ft/lbs	Nm.	ft/lbs	Nm.	ft/lbs	Nm.
8-32	19	2.1	30	3.4	41	4.6
8-36	20	2.3	31	3.5	43	4.9
10-24	27	3.1	43	4.9	60	6.8
10-32	31	3.5	49	5.5	68	7.7
1/4-20	66	7.6	8	10.9	12	16.3
1/4-28	76	8.6	10	13.6	14	19.0
5/16-18	11	15.0	17	23.1	25	34.0
5/16-24	12	16.3	19	25.8	29	34.0
3/8-16	20	27.2	30	40.8	45	61.2
3/8-24	23	31.3	35	47.6	50	68.0
7/16-14	30	40.8	50	68.0	70	95.2
7/16-20	35	47.6	55	74.8	80	108.8
1/2-13	50	68.0	75	102.0	110	149.6
1/2-20	55	74.8	90	122.4	120	163.2
9/16-12	65	88.4	110	149.6	150	204.0
9/16-18	75	102.0	120	163.2	170	231.2
5/8-11	90	122.4	150	204.0	220	299.2
5/8-18	100	136	180	244.8	240	326.4
3/4-10	160	217.6	260	353.6	386	525.0
3/4-16	180	244.8	300	408.0	420	571.2
7/8-9	140	190.4	400	544.0	600	816.0
7/8-14	155	210.8	440	598.4	660	897.6
1-8	220	299.2	580	788.8	900	1,244.0
1-12	240	326.4	640	870.4	1,000	1,360.0

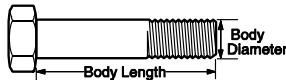
The guides and ruler furnished below are designed to help you select the appropriate hardware.



Nut, M8

Thread Diameter (mm)  
Inside Diameter (in)    Threads per inch

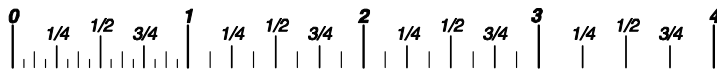
Nut, 1/2-16



Screw, M8- 1.25 x 25

Thread Diameter (mm)    Distance between threads (mm)    Body Length (mm)  
Body Diameter    Threads per inch    Body Length (in)

Screw, 1/2- 16 x 2



## Standard Hardware Sizing

When a washer or nut is identified as 1/2" (M8), this is the *Nominal size*, meaning the *inside diameter* is 1/2 inch (8mm metric thread diameter); if a second number is present it represents the *threads per inch* (distance between threads).

When bolt or capscrew is identified as 1/2 - 16 x 2" (M8 - 1.25 x 50), this means the *Nominal size*, or body diameter is 1/2 inch (8mm metric thread diameter), the second number, 16, represents the *threads per inch*, (1.25 thread diameter). The final number is the body length of the bolt or screw, 2 inches (50mm).

## NOTES

- These torque values are to be used for all hardware excluding: locknuts, self-tapping screws, thread forming screws, sheet metal screws and socket head setscrews.
- Recommended seating torque values for locknuts:
  - for prevailing torque locknuts - use 65% of grade5 torques.
  - for flange whizlock nuts and screws - use 135% of grade 5 torques.
- Unless otherwise noted on assembly drawings, all torque values must meet this specification.

## Common Hardware Types

Hex Head Capscrew



Washer



Carriage Bolt



Lockwasher



Hex Nut



## Wrench & Fastener Size Guide

1/4" Bolt or Nut Wrench—7/16"	5/16" Bolt or Nut Wrench—1/2"	3/8" Bolt or Nut Wrench—9/16"	7/16" Bolt or Nut Wrench (Bolt)—5/8" Wrench (Nut)—11/16"	1/2" Bolt or Nut Wrench—3/4"
M6 Bolt or Nut Wrench—10mm	M8 Bolt or Nut Wrench—13mm	M10 Bolt or Nut Wrench—17mm	M12 Bolt or Nut Wrench—19mm	M14 Bolt or Nut Wrench—22mm

*Parts Manual for*

# **SNAPPER®**

## **22" VARIABLE SPEED 3N1 WALK BEHIND MOWERS**

Not for  
Reproduction

IT IS THE POLICY OF BRIGGS & STRATTON CORP TO IMPROVE ITS PRODUCTS WHENEVER IT IS POSSIBLE AND PRACTICAL TO DO SO. WE RESERVE THE RIGHT TO MAKE CHANGES OR ADD IMPROVEMENTS AT ANY TIME WITHOUT INCURRING ANY OBLIGATION TO MAKE SUCH CHANGES ON PRODUCTS

**Briggs & Stratton Yard Power Products Group**

535 Macon Road  
McDonough, GA, 30253 U.S.A.  
800-935-2967

[www.snapper.com](http://www.snapper.com)

Copyright © 2011 Briggs & Stratton Corporation  
Milwaukee, WI USA. All Rights Reserved

**Manual No. 7104293**

**Revision: B 5/13/2011**