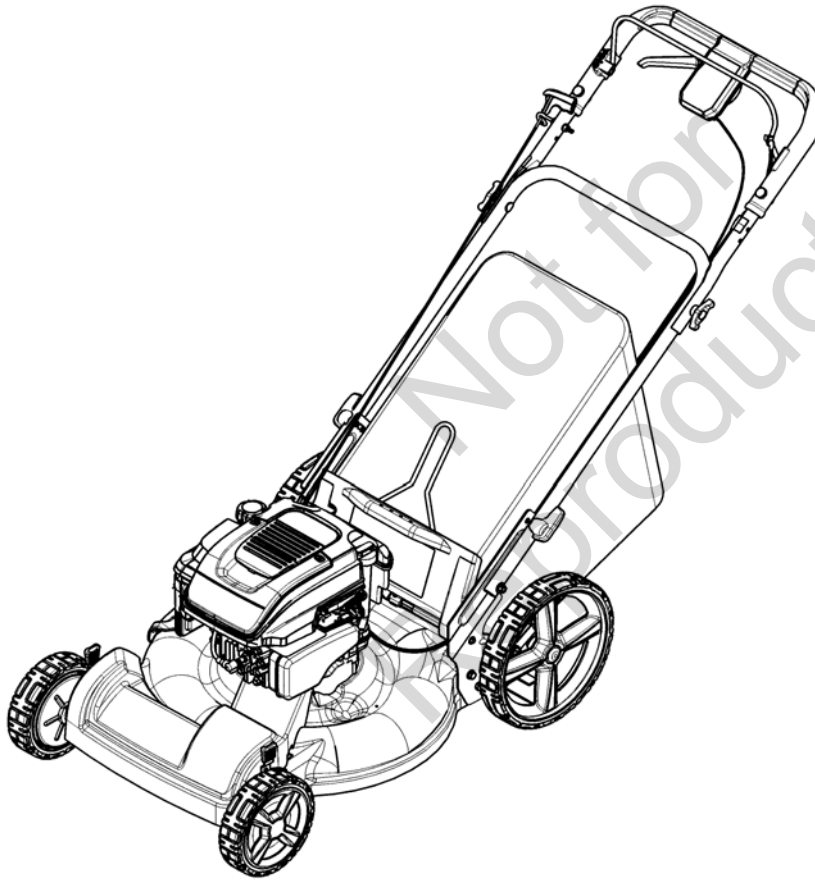


*Parts Manual for*

# **SNAPPER®**

## **22" VARIABLE SPEED HIGH WHEEL WALK BEHIND MOWERS**

<i>Model No.</i>	<i>Description</i>
7800230	NSPV22675HW
7800420	NSPV22675HW
7800190	SPV22675HW
7800585	SPV2270HW

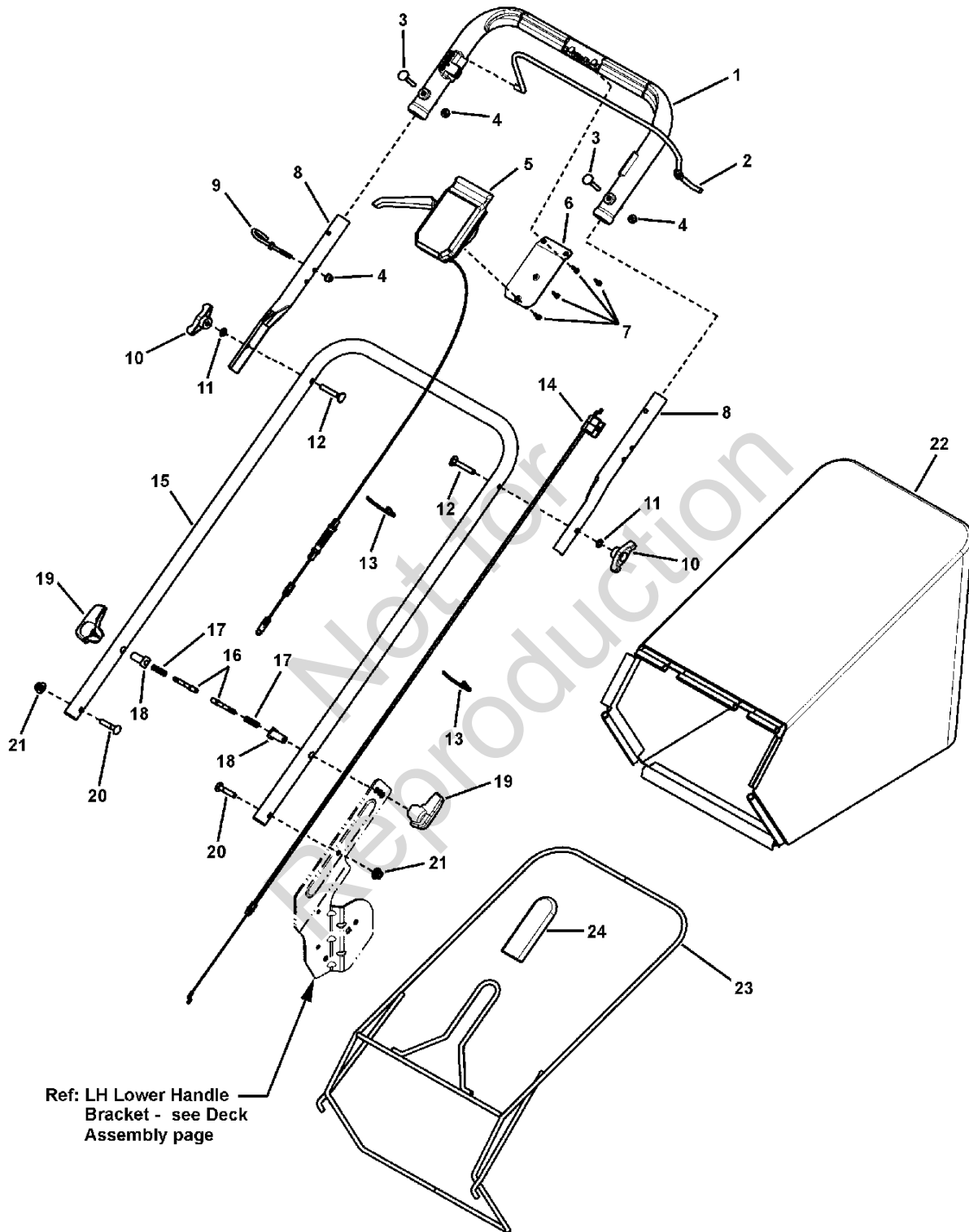


**Snapper SPV2270HW**

Not for  
Reproduction

<b>PAGE</b>	<b>GROUP</b>
4	Handles & Controls
6	Deck Assembly
8	Engine & Blade Assembly
10	Decals

Not for  
Reproduction

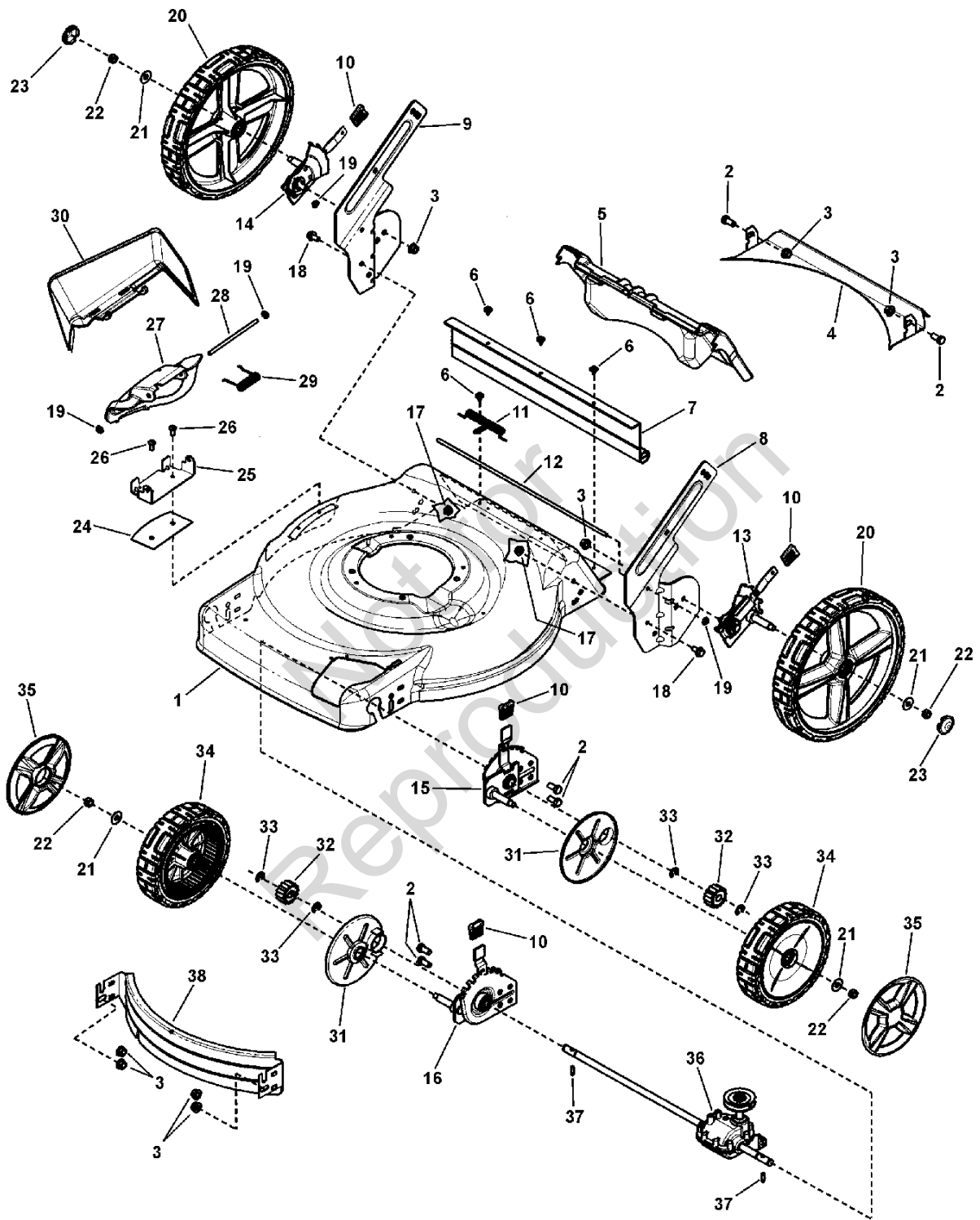


## Handles & Controls

Item	Part No	Qty	Description
1	7101312	1	HANDLE, Plastic Upper, WBM
2	7101321BH	1	BAIL, Plastic Handle, WBM
3	7090015	2	BOLT, 1/4-20 x 1-3/4 Round Head Square Neck, GR 2
4	2860694	3	NUT, 1/4-20, Hex Flange Nyloc, YZ
5	7101415	1	ASSEMBLY, Control Head, 22 WBM, VS, HW (incl. cable & lever)
6	7300670A	1	PLATE, Control Panel- Plastic Handle
7	7100225	4	SCREW, #8-16 Torxplus Recessed Pan Head, Twin Helix
8	7300649BH	2	HANDLE, Connecting 21/22 WBM
9	7101410	1	ROPE GUIDE (1/4-20 thread)
10	7035744	2	KNOB, 5/16-18 Wing (Black)
11	7090391	2	WASHER, 5/16" Internal Tooth Lock
12	7091189	2	BOLT, 5/16-18 x 2 Curved Head Square Neck, GR 2
13	7024649	3	WIRE TIE, 11 Inch Standard Black Nylon
14	7101395	1	CABLE, Bail, 22 WBM (43.10" cable length)
15	7300667BH	1	HANDLE, Lower, 22 WBM, Hi-Wheel
16	7101198	2	PIN, Handle Adjust
17	7101200	2	SPRING, Compression
18	7101199	2	BUSHING, Handle Pin
19	7101202	2	KNOB, Quick Release
20	7090958	2	BOLT, 5/16-18 x 1-1/2" Round Head Short Square Neck, GR 5
21	7090951	2	NUT, 5/16-18 Large Head Center Lock, Black
22	7101246	1	GRASS BAG, 22" Rear Discharge
23	7101230A	1	BAG FRAME, 22" WBM (Weldment)
24	7026421	1	GRIP, Rectangular (Black)

### Footnotes:

# Deck Assembly



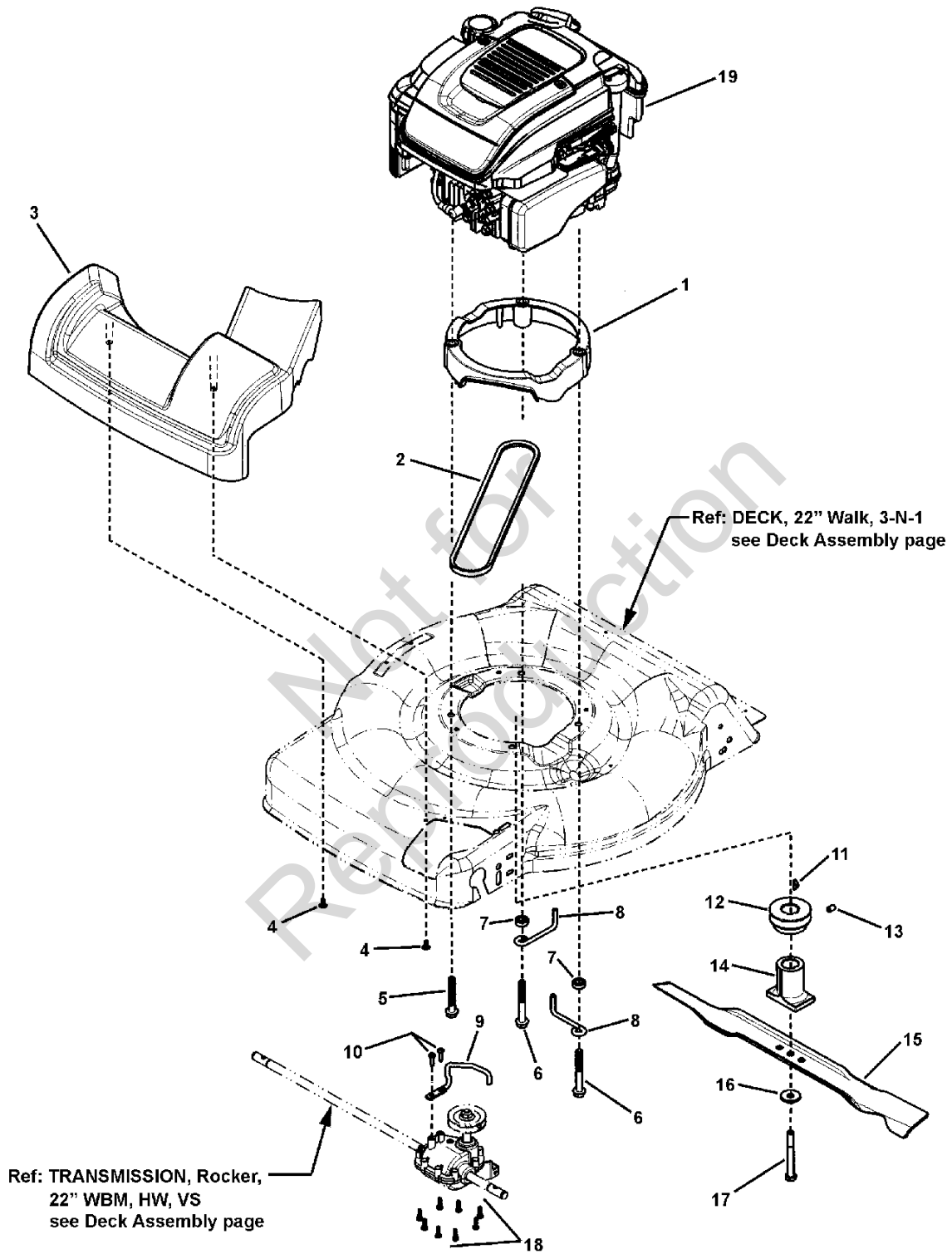
## Deck Assembly

Item	Part No	Qty	Description
1	7300400D	1	DECK, 22 Walk, 3-N-1
2	7900054	4	SCREW, 3/8-16 x 3/4" Hex Head Cap, GR 5, YZ
3	7091619	6	NUT, 3/8-16 Hex Flange Lock, YZ
4	7300854D	1	BAFFLE, Rear, 22 Deck
5	7101243	1	DOOR, 22" Rear
6	7091286	4	SCREW, #10-24 x 1/2 Hex Washer Self-Tap, SEMS
7	7102422	1	GUARD, Rear
8	7300583BH	1	BRACKET, Lower Handle, LH, 22" WBM, HW
9	7300582BH	1	BRACKET, Lower Handle, RH, 22" WBM, HW
10	7100633	4	GRIP, Height Latch
11	7101461	1	SPRING, Torsion, Rear Door, 22" WBM
12	7101070	1	ROD, Pivot, Rear Door (1/4" Dia. X 17-1/2")
13	7501055	1	ASSEMBLY, Height-Of-Cut, Left Rear, 22" WBM
14	7501056	1	ASSEMBLY, Height-Of-Cut, Right Rear, 22" WBM
15	7501058	1	ASSEMBLY, Height-Of-Cut, Left Front, 22" WBM, Propelled
16	7501057	1	ASSEMBLY, Height-Of-Cut, Right Front, 22" WBM, Propelled
17	7091601	2	NUT, 5/16-18 Flange Lock, YZ
18	7091811	2	BOLT, 5/16-18 x 5/8" Hex Flange Lock, YZ
19	7091020	4	PUSHNUT, 1/4"
20	7500546	2	* ASSEMBLY, Wheel, 12 x 2 Idle, BB, Snapper Cool Gray
21	722604	4	WASHER, 1" O.D. x .387 I. D. Flat
22	7091585	4	NUT, 3/8-16 Hex Center Lock, YZ
23	7101393	2	HUBCAP, 12 Wheel, Snapper Cool Gray
24	7300856D	1	PLATE, Mulch, 22" RB Scott's
25	7300855D	1	BRACKET, Chute
26	722848	3	SCREW, 1/4-20 x 11/16 Pan Head Torx, Self-Tap
27	721682	1	COVER, Mulch, Plastic, Black
28	7101067	1	ROD, Pivot (1/4" Dia. x 5.55")
29	722507	1	SPRING, Torsion, Chute
30	721681	1	SIDE CHUTE, Plastic, Black
31	7101402	2	DUST SHIELD, 22" WBM, Front Wheel Drive
32	7101207	2	GEAR, Pinion, 22" WBM, Front Wheel Drive
33	7014341	4	RING, External Retaining (Waldes 5133-50)
34	7500542	2	* ASSEMBLY, Drive Wheel, 8 x 2, BB, Snapper Charcoal Gray
35	7101350	2	HUBCAP, 8 & 9 Wheel Spoked - Snapper Cool Gray
36	7100857	1	TRANSMISSION, Rocker, 22 WBM HW, VS
37	7101270	2	DRIVE PIN, 22" WBM, Front Wheel Drive
38	7300440D	1	BAFFLE, Front, 22 WBM

### Footnotes:

Note: \* Includes two 1-1/8 O. D. Flanged Ball Bearings (p/n 7101380).

# Engine & Blade Assembly





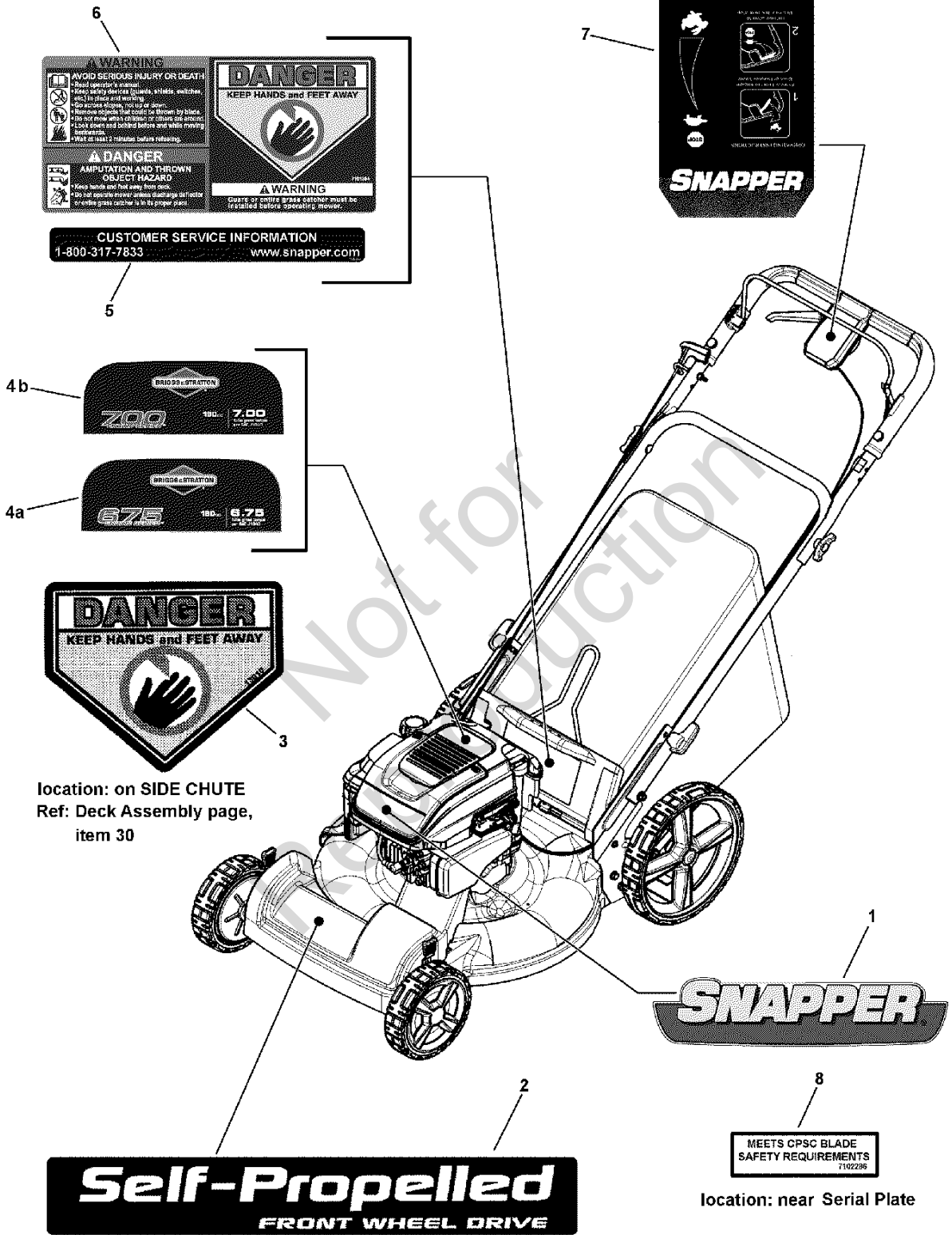
## Engine & Blade Assembly

---

Item	Part No	Qty	Description
1	7101449	1	ASSEMBLY, Engine Spacer, 22" WBM, Self-Propelled (includes 7101209 (spacer) & 7101448 (3) (bushings))
2	7100913	1	BELT, Traction Drive, 22 Pivot Handle (3L Section; 31.94 effective length)
3	7101195	1	FRONT COVER, Deck, 22" Front Wheel Drive
4	7900018	2	SCREW, 4.8 x 1.59 x 13mm, Round Washer Head Hi-Lo (Torx)
5	720351	1	BOLT, 3/8-16 NS x 2-1/2" Hex Head
6	7101451	2	SCREW, 3/8-16 x 3" Hex Washer Self-Tap
7	7101302	2	SPACER, BELT GUIDE, 22" VS
8	7101024	2	BELT GUIDE, Engine, 22" VS
9	7101009	1	BELT GUIDE, Transmission, 22 WBM
10	7091195	2	SCREW, #10-16 x 3/4 Pan Head Self-Tap, Combo
11	7091214	1	KEY, #HP-506 Hi-Pro
12	7100437	1	PULLEY, Engine
13	7092086	1	SET SCREW 5/16-18 x 1/2 Hex Recess
14	7100740	1	BLADE HUB, 22" Deck, Self Propelled
15	7100851	1	BLADE, 22", Walk Mower
16	721890	1	WASHER, .38" I.D. x 1.183 O.D. Bellville
17	720209	1	BOLT, 3/8-24 x 3-1/4" Hex Head, GR 8
18	7900032	8	SCREW, 7mm x 1 x .550 AB Point
19	126T02-0675-B3	1	* ENGINE, B&S, 675 Ser, X-Spec, B3 (used on 7800190 model)
19	126L02-0675-F3	1	* ENGINE, B&S, 675 Ser, X-Spec, F3 (used on 7800230 model)
19	126L02-4675-F3	1	* ENGINE, B&S, 675 Ser, X-Spec, F3 (used on 7800420 model)
19	128T02-0740-B3	1	* ENGINE, B&S, 700 Ser, X-Spec, B3 (used on 7800585 model)

### Footnotes:

NOTE: \* Purchase engine parts from engine manufacturer dealer.



## Decals

---

Item	Part No	Qty	Description
1	7102153	1	DECAL, Briggs Engine, Snapper
2	7101538	1	DECAL, Front Cover, 22" Snapper, Front Wheel Drive
3	7013010	1	DECAL, Danger, Cut Finger
4a	7102151	1	DECAL, Briggs Engine, 675 Series
4b	7103682	1	DECAL, Briggs Engine, 700 Series (used on 7800585 model only)
5	7102275	1	DECAL, Customer Service
6	7101394	1	DECAL, Warning, Rear Discharge Door
7	7101536	1	DECAL, Control Head, VS, Snapper
8	7102286	1	DECAL, CPSC Blade

Not for  
Reproduction

### Footnotes:





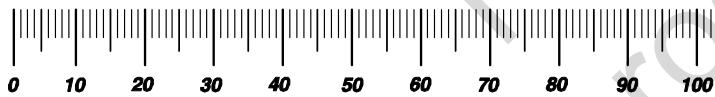


# Hardware Identification & Torque Specifications

Torque Specification Chart								
FOR STANDARD METRIC MACHINE HARDWARE (Tolerance ± 20%)								
Property Class	5.6		8.8		10.9		12.9	
	Class 5.6		Class 8.8		Class 10.9		Class 12.9	
Size Of Hardware	in/lbs		in/lbs		in/lbs		in/lbs	
	ft/lbs	Nm.	ft/lbs	Nm.	ft/lbs	Nm.	ft/lbs	Nm.
M3	5.88	.56	13.44	1.28	19.2	1.80	22.92	2.15
M4	13.44	1.28	30.72	2.90	43.44	4.10	52.56	4.95
M5	26.4	2.50	60.96	5.75	5.97	8.10	7.15	9.7
M6	44.64	4.3	7.3	9.9	10.3	14	12.1	16.5
M7	5.2	7.1	12.1	16.5	16.9	23	19.9	27
M8	7.7	10.5	17.7	24	25	34	29	40
M10	15	21	35	48	50	67	59	81
M12	26	36	61	83	86.2	117	103	140
M14	42	58	101	132	136	185	162	220
M16	64	88	147	200	210	285	250	340
M18	89	121	202	275	287	390	346	470
M20	126	171	290	390	405	550	486	660
M22	169	230	390	530	559	745	656	890
M24	217	295	497	375	708	960	840	1140
M27	320	435	733	995	1032	1400	1239	1680
M30	435	590	995	1350	1401	1900	1681	2280
M33	590	800	1349	1830	1902	2580	2278	3090
M36	759	1030	1740	2360	2441	3310	2935	3980
M39	988	1340	2249	3050	3163	4290	3798	5150

Torque Specification Chart						
FOR STANDARD MACHINE HARDWARE (Tolerance ± 20%)						
Hardware Grade	No Marks		SAE Grade 5		SAE Grade 8	
	SAE Grade 2		SAE Grade 5		SAE Grade 8	
Size Of Hardware	in/lbs		in/lbs		in/lbs	
	ft/lbs	Nm.	ft/lbs	Nm.	ft/lbs	Nm.
8-32	19	2.1	30	3.4	41	4.6
8-36	20	2.3	31	3.5	43	4.9
10-24	27	3.1	43	4.9	60	6.8
10-32	31	3.5	49	5.5	68	7.7
1/4-20	66	7.6	8	10.9	12	16.3
1/4-28	76	8.6	10	13.6	14	19.0
5/16-18	11	15.0	17	23.1	25	34.0
5/16-24	12	16.3	19	25.8	29	34.0
3/8-16	20	27.2	30	40.8	45	61.2
3/8-24	23	31.3	35	47.6	50	68.0
7/16-14	30	40.8	50	68.0	70	95.2
7/16-20	35	47.6	55	74.8	80	108.8
1/2-13	50	68.0	75	102.0	110	149.6
1/2-20	55	74.8	90	122.4	120	163.2
9/16-12	65	88.4	110	149.6	150	204.0
9/16-18	75	102.0	120	163.2	170	231.2
5/8-11	90	122.4	150	204.0	220	299.2
5/8-18	100	136	180	244.8	240	326.4
3/4-10	160	217.6	260	353.6	386	525.0
3/4-16	180	244.8	300	408.0	420	571.2
7/8-9	140	190.4	400	544.0	600	816.0
7/8-14	155	210.8	440	598.4	660	897.6
1-8	220	299.2	580	788.8	900	1,244.0
1-12	240	326.4	640	870.4	1,000	1,360.0

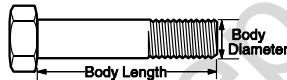
The guides and ruler furnished below are designed to help you select the appropriate hardware.



Nut, M8

Thread Diameter (mm)  
Inside Diameter (in)  
Threads per inch

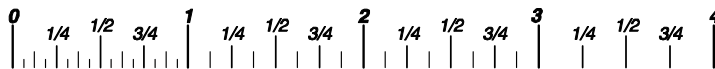
Nut, 1/2-16



Screw, M8- 1.25 x 25

Thread Diameter (mm)  
Body Diameter  
Distance between threads (mm)  
Threads per inch  
Body Length (mm)  
Body Length (in)

Screw, 1/2- 16 x 2



## Standard Hardware Sizing

When a washer or nut is identified as 1/2" (M8), this is the *Nominal size*, meaning the *inside diameter* is 1/2 inch (8mm metric thread diameter); if a second number is present it represents the *threads per inch* (distance between threads).

When bolt or capscrew is identified as 1/2 - 16 x 2" (M8 - 1.25 x 50), this means the *Nominal size*, or body diameter is 1/2 inch (8mm metric thread diameter), the second number, 16, represents the *threads per inch*, (1.25 thread diameter). The final number is the body length of the bolt or screw, 2 inches (50mm).

## NOTES

- These torque values are to be used for all hardware excluding: locknuts, self-tapping screws, thread forming screws, sheet metal screws and socket head setscrews.
- Recommended seating torque values for locknuts:
  - for prevailing torque locknuts - use 65% of grade5 torques.
  - for flange whizlock nuts and screws - use 135% of grade 5 torques.
- Unless otherwise noted on assembly drawings, all torque values must meet this specification.

## Common Hardware Types

Hex Head Capscrew



Washer



Carriage Bolt



Lockwasher



Hex Nut



## Wrench & Fastener Size Guide

1/4" Bolt or Nut Wrench—7/16"	5/16" Bolt or Nut Wrench—1/2"	3/8" Bolt or Nut Wrench—9/16"	7/16" Bolt or Nut Wrench (Bolt)—5/8" Wrench (Nut)—11/16"	1/2" Bolt or Nut Wrench—3/4"
M6 Bolt or Nut Wrench—10mm	M8 Bolt or Nut Wrench—13mm	M10 Bolt or Nut Wrench—17mm	M12 Bolt or Nut Wrench—19mm	M14 Bolt or Nut Wrench—22mm

*Parts Manual for*

# **SNAPPER®**

## **22" VARIABLE SPEED HIGH WHEEL WALK BEHIND MOWERS**

Not for  
Reproduction

IT IS THE POLICY OF BRIGGS & STRATTON CORP TO IMPROVE ITS PRODUCTS WHENEVER IT IS POSSIBLE AND PRACTICAL TO DO SO. WE RESERVE THE RIGHT TO MAKE CHANGES OR ADD IMPROVEMENTS AT ANY TIME WITHOUT INCURRING ANY OBLIGATION TO MAKE SUCH CHANGES ON PRODUCTS

**Briggs & Stratton Yard Power Products Group**

535 Macon Road  
McDonough, GA, 30253 U.S.A.  
800-935-2967

[www.snapper.com](http://www.snapper.com)

Copyright © 2010 Briggs & Stratton Corporation  
Milwaukee, WI USA. All Rights Reserved

**Manual No. 7102345**

**Revision: G 7/27/2010**