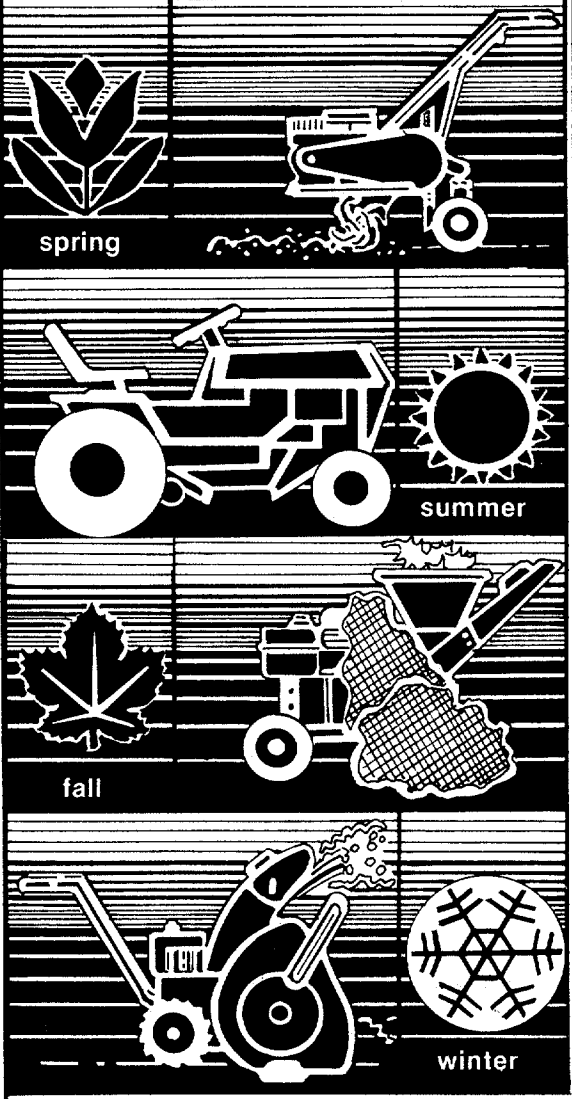


OWNER'S GUIDE

OUTDOOR POWER EQUIPMENT
for all seasons



18 H.P. GARDEN TRACTORS

Model Numbers
145-842-000
145-843-000

Important:
Read Safety Rules and
Instructions Carefully

Thank you for purchasing
an American-built product.

INDEX

Safe Operating Practices	3	Off-Season Storage	17
Assembly	5	Trouble Shooting Chart	18, 19
Controls	8	Illustrated Parts for Tractor	22-33
Operation	9	Illustrated Parts for Transaxle	34, 35
Adjustments	10	Illustrated Parts for Hydrostatic Pump	36
Lubrication	12	Electrical Diagrams and Parts Lists	37, 38
Maintenance	13	Parts Ordering Information	Back Cover



Instructions given with this symbol are for personal safety. Be sure to follow them.

LIMITED WARRANTY

For one year from the date of original retail purchase, MTD PRODUCTS INC will either repair or replace, at its option, free of charge, F.O.B. factory or authorized service firm, any part or parts found to be defective in material or workmanship. Transportation charges for the movement of any power equipment unit or attachment are the responsibility of the purchaser. Transportation charges for any parts submitted for replacement under this warranty must be paid by the purchaser unless such return is requested by MTD PRODUCTS INC.

This warranty will not apply to any part which has become inoperative due to misuse, excessive use, accident, neglect, improper maintenance, alterations, or unless the unit has been operated and maintained in accordance with the instructions furnished. This warranty does not apply to the engine, motor, battery, battery charger or component parts thereof. Please refer to the applicable manufacturer's warranty on these items.

This warranty will not apply where the unit has been used commercially.

Warranty service is available through your local authorized service dealer or distributor. If you do not know the dealer or distributor in your area, please write to the Customer Service Department of MTD.

The return of a complete unit will not be accepted by the factory unless prior written permission has been extended by MTD.

This warranty gives you specific legal rights. You may also have other rights which vary from state to state.



WARNING

This unit is equipped with an internal combustion engine and should not be used on or near any unimproved forest-covered, brush-covered or grass-covered land unless the engine's exhaust system is equipped with a spark arrester meeting applicable local or state laws (if any). If a spark arrester is used, it should be maintained in effective working order by the operator.

In the State of California the above is required by law (Section 4442 of the California Public Resources Code). Other states may have similar laws. Federal laws apply on federal lands. A spark arrester muffler is available at your nearest engine authorized service center.



WARNING

To reduce the potential for any injury, comply with the following safety instructions. Failure to comply with the instructions may result in personal injury.

SAFE OPERATION PRACTICES FOR RIDING VEHICLES

1. Read this owner's manual carefully in its entirety before attempting to assemble or operate this unit. Keep this manual in a safe place for future and regular reference and for ordering replacement parts.
2. This unit is a precision piece of power equipment, not a plaything. Therefore exercise extreme caution at all times.
3. Know the controls and how to stop quickly—**READ THIS OWNER'S MANUAL.**
4. Do not allow children to operate vehicle. Do not allow adults to operate it without proper instruction. Only persons well acquainted with these rules of safe operation should be allowed to use your mower.
5. No one should operate this unit while intoxicated or while taking medication that impairs the senses or reactions.
6. Wear sturdy, rough-soled work shoes and close-fitting slacks and shirts to avoid entanglement in the moving parts. Never operate a unit in bare feet, sandals, or sneakers.
7. To prevent injury, do not carry passengers or give rides. Keep children, pets and bystanders out of the area while mowing. Only the operator should ride on the unit and only ride in the seat.
8. Check overhead clearance carefully before driving under power lines, guy wires, bridges or low hanging tree branches, before entering or leaving buildings, or in any other situation where the operator may be struck or pulled from the unit, which could result in serious injury.
9. To maintain control of the unit and reduce the possibility of upset or collision, operate the tractor smoothly. Avoid erratic operation and excessive speed.
10. Keep the area of operation clear of all persons, particularly small children and pets. Stop engine when they are in the vicinity of your mower. Although the area of operation should be completely cleared of foreign objects, a small object may have been overlooked and could be accidentally thrown by the mower in any direction and cause injury.
11. Clear work area of objects which might be picked up and thrown by the mower in any direction and cause injury.
12. Stop the blade(s) when crossing gravel drives, walks or roads.
13. Disengage all attachment clutches and shift into neutral before attempting to start engine.
14. Disengage power to attachment(s) and stop engine before leaving operating position.
15. Do not put hands or feet near or under rotating parts. Keep clear of the discharge opening at all times as the rotating blade(s) can cause injury.
16. Disengage power to attachment(s) and stop engine before making any repairs or adjustments. Disconnect the spark plug wire and keep the wire away from the plug to prevent accidental starting.
17. Before attempting to unclog the mower or discharge chute, stop the engine. The mower blade(s) may continue to rotate for a few seconds after the engine is shut off. Therefore, be sure the blade(s) have stopped completely. Disconnect the spark plug wire and keep the wire away from the plug to prevent accidental starting.
18. Disengage power to attachment(s) when transporting or not in use.
19. Take all possible precautions when leaving vehicle unattended such as disengaging power-take-off, lowering attachments, shifting into neutral, setting parking brake, stopping engine and removing key.
20. Do not stop or start suddenly when going uphill or downhill. Mow up and down face of steep slopes; never across the face. Use extreme caution if it is necessary to drive the tractor up an incline or back the tractor down an incline because the front of the tractor could lift and rapidly flip over backward which could cause serious injury.
21. Reduce speed on slopes and in sharp turns to prevent tipping or loss of control. Always keep the tractor in gear when going down steep hills to take advantage of engine braking action.
22. Stay alert for holes in terrain and other hidden hazards.
23. Use care when pulling loads or using heavy equipment.
 - A. Use only approved drawbar hitch points.
 - B. Limit loads to those you can safely control.
 - C. Do not turn sharply. Use care when backing.
 - D. Use counterweight(s) or wheel weights when suggested in owner's manual.
24. Watch out for traffic when crossing or near roadways.
25. When using any attachments, never direct discharge of material toward bystanders nor allow anyone near vehicle while in operation.
26. Handle gasoline with care. It is highly flammable.
 - A. Use approved gasoline container.
 - B. Never remove cap or add gasoline to a running or hot engine or fill fuel tank indoors. Wipe up spilled gasoline.
 - C. Open doors if engine is run in garage. Exhaust fumes are dangerous. Do not run engine indoors.

27. Keep the vehicle and attachments in good operating condition, and keep safety devices in place. Use guards as instructed in operator's manual.
28. Keep all nuts, bolts, and screws tight to be sure the equipment is in safe working condition.
29. Never store the equipment with gasoline in the tank inside a building where fumes may reach an open flame or spark. Allow engine to cool before storing in any enclosure.
30. To reduce fire hazard, keep engine free of grass, leaves or excessive grease.
31. The vehicle and attachments should be stopped and inspected for damage after striking a foreign object. The damage should be repaired before restarting and operating the equipment.
32. Do not change the engine governor settings or overspeed the engine.
33. When using the vehicle with mower, proceed as follows:
 - (1) Mow only in daylight or in good artificial light.
 - (2) Never make a cutting height adjustment while engine is running if operator must dismount to do so.
 - (3) Shut the engine off and wait until the blade comes to a complete stop before removing the grass catcher.
 - (4) Check blade mounting bolts for proper tightness at frequent intervals.
34. Check grass catcher bags frequently for wear or deterioration. For safety protection, replace only with new bag meeting original equipment specifications.
35. Look behind to make sure the area is clear before placing the transmission in reverse and continue looking behind while backing up. Disengage blades before shifting into reverse and backing up.
36. This unit should not be driven up a ramp onto a trailer or truck under power, because the unit could tip over, causing serious personal injury. The unit must be pushed manually to load properly.

ASSEMBLY



NOTE

This unit is shipped WITHOUT GASOLINE or OIL. After assembly, see separate engine manual for proper fuel and engine oil recommendations.

This owner's manual covers various models of garden tractors. The units illustrated may vary slightly from your unit. Follow the instructions which pertain to your unit.

Contents of Hardware Pack (Model 842):

- (1) Mounting Clamp
- (2) Hex Lock Nuts 5/16-18 Thread
- (1) Belleville Washer 5/16" I.D.
- (1) Steering Wheel Cap

Contents of Hardware Pack (Model 843):

- (1) Mounting Clamp
- (4) Hex Lock Nuts 5/16-18 Thread
- (2) Hex Bolts 5/16-18 x 3/4" Long
- (5) Belleville Washers
- (1) Steering Bellow
- (1) Steering Wheel Cap

BATTERY INFORMATION



WARNING

- A. Battery acid must be handled with great care as contact with it can burn and blister the skin. It is also advisable to wear protective clothing (goggles, rubber gloves and apron) when working with it.*
- B. Should battery acid accidentally splatter into the eyes or onto the face, rinse the affected area immediately with clean cold water. If there is any further discomfort, seek prompt medical attention.
- C. If acid spills on clothing, first dilute it with clean water, then neutralize with a solution of ammonia/water or baking soda/water.
- D. Since battery acid is corrosive, do not pour it into any sink or drain. Before discarding empty electrolyte containers, rinse them with a neutralizing solution.
- E. NEVER connect or disconnect charger clips to battery while charger is turned on as it can cause sparks.
- F. Keep all lighted materials (cigarettes, matches, lighters) away from the battery as the hydrogen gas generated during charging can be combustible.

- G. As a further precaution, only charge the battery in a well-ventilated area.

*** Always shield eyes, protect skin and clothing when working near batteries.**



DANGER

Battery contains sulfuric acid. Antidote: EXTERNAL—Flush with water. INTERNAL—Drink large quantities of water or milk. Follow with milk of magnesia, beaten egg or vegetable oil. Seek prompt medical attention. EYES: Flush with cool water for at least 15 minutes, then seek immediate medical attention.

Since batteries produce explosive gases, keep all lighted materials (cigarettes, lighters, matches, etc.) away. Be sure to charge battery only in well-ventilated areas.

KEEP BATTERIES OUT OF THE REACH OF CHILDREN.

ACTIVATING THE BATTERY

- 1. Place the battery to be filled on a workbench. Never activate a battery in the unit.
- 2. Slip one end of battery drain tube on the battery manifold.
- 3. Remove the fill caps from all cells.
- 4. Fill each cell carefully using 1.265 specific gravity electrolyte. Fill each cell to the top of the separators. Do not overfill.
- 5. Let the battery sit for 20 minutes to allow the chemical reaction to take place.
- 6. Charge the battery at a MAXIMUM RATE OF 5 AMPS. until the specific gravity reads 1.265. Use a hydrometer to check the specific gravity.



NOTE

An excessive rate of charge will damage the battery.

- 7. Check the level of electrolyte. Adjust level to bottom of split ring if necessary with electrolyte.
- 8. Replace fill caps.



NOTE

After battery has been in service, add only distilled water, or pure drinking water. DO NOT ADD ACID.

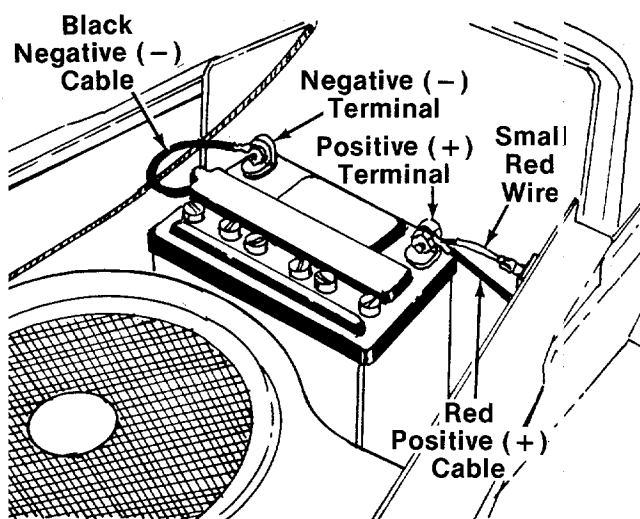


FIGURE 1.

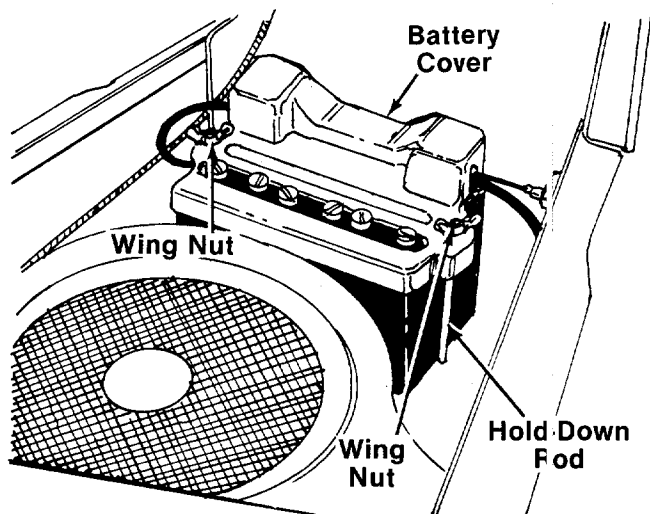


FIGURE 2.

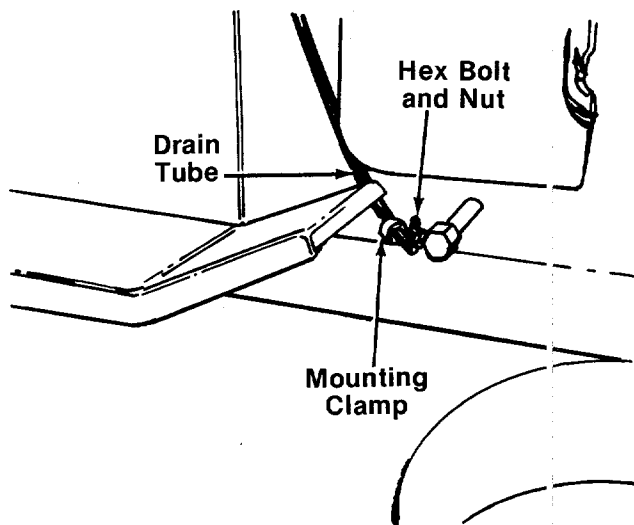


FIGURE 3.

NOTE

This engine is equipped with an alternator. The current for the battery charger alternator is unregulated. During normal operation, it is only necessary to charge the battery:

1. When it is activated for the first time.
2. Before winter storage.
3. Before using the garden tractor after winter storage.

INSTALLING THE BATTERY

NOTE

The positive battery terminal is marked Pos. (+). The negative battery terminal is marked Neg. (-).

1. Place the battery on the battery plate with the terminals towards the rear of the tractor.
2. Attach the positive cable (heavy red wire) and the small red wire (from the circuit breaker) to the positive battery terminal (+) with a 1/4-20 x 3/4" long bolt, lock washer and hex nut provided in the battery pack. See figure 1.
3. Attach the negative cable (heavy black wire) to the negative battery terminal (-) with the other 1/4-20 x 3/4" long bolt, lock washer and hex nut.

4. Hook one hold-down rod into the hole in battery plate beside the battery. See figure 2. Place the battery cover in position over the hold-down rod. Secure with wing nut. Attach other hold-down rod to the other side of battery cover in the same manner.

5. Route the battery drain tube down beside the oil drain pipe on the right side of the tractor.

Slip the end of the drain tube into the mounting clamp provided in hardware pack. Secure the mounting clamp to the tractor by placing the clamp over the hex bolt and nut which hold the engine pulley belt guard to the frame. Secure in place with hex lock nut provided in hardware pack. See figure 3.

NOTE

The vented battery allows any gases or liquid from the battery to be drained onto the ground.

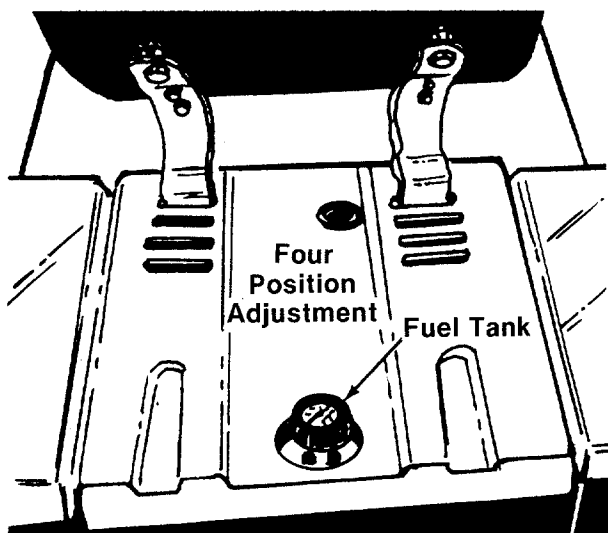


FIGURE 4A.—Model 842

SEAT ASSEMBLY

Model 842:

The seat can be adjusted to four positions. With the seat tipped forward, hook the front of the seat spring into the slots on the tractor frame. Allow the seat to pivot backwards until it rests on the rear of the springs. See figure 4A.

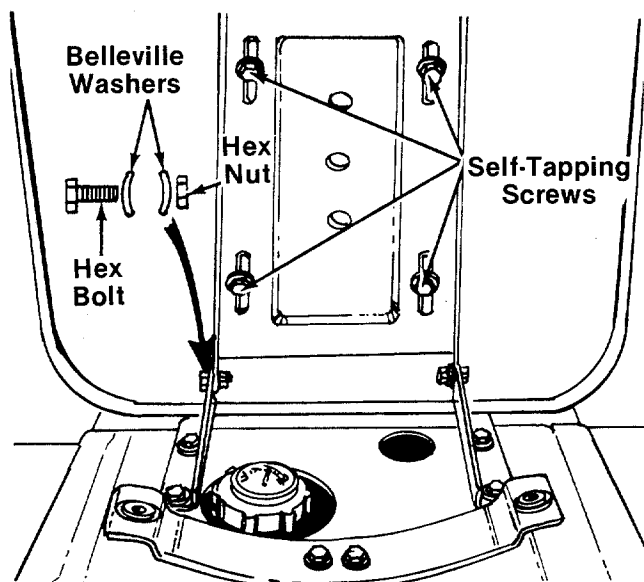


FIGURE 4B.—Model 843

Model 843:

Place the seat in position against the seat brackets. Secure each side of seat with $\frac{3}{4}$ " long hex bolt, two belleville washers (on the inside and outside) and hex lock nut. Crown side of washers should be against the head of the bolt and the nut. See figure 4B.

STEERING WHEEL INSTALLATION

1. **Model 843 only:** There are four height positions for the steering wheel. For shipping purposes, the steering shaft is assembled in the lowest position. Lift the hood of the tractor. Remove the hairpin cotter and clevis pin on the steering shaft. Raise the shaft to desired position and secure with hairpin cotter and clevis pin. See reference numbers 56 and 57 on page 28.

2. **Model 843 only:** Attach the plastic steering bellow to the steering wheel as shown in figure 5.

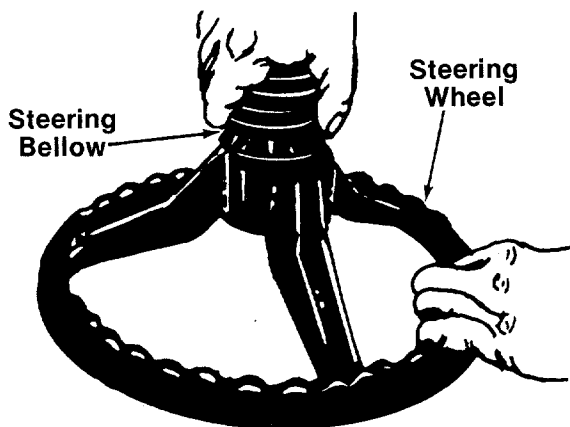
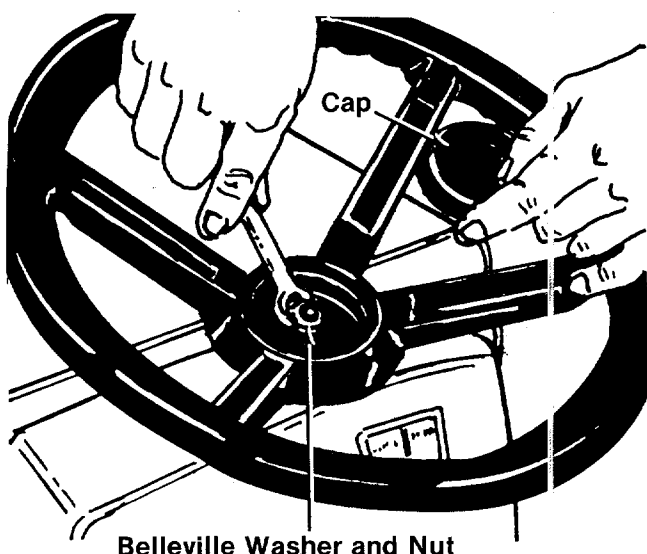


FIGURE 5.—Model 843



One end of the steering bellow is slightly larger than the other. The larger end must be assembled to the steering wheel.

3. Place steering wheel over the steering shaft, lining up the flats in the wheel with the flats on the shaft.



4. Secure with belleville washer (cupped side against the steering wheel) and hex nut. See figure 6.

5. Press the steering wheel cap on the steering wheel by hand.

TIRE PRESSURE

For shipping purposes, the tires on your unit may be over-inflated. Tire pressure should be reduced before unit is put into operation. Recommended operating tire pressure should be 10 p.s.i.

Check sidewall of tire for manufacturer's maximum tire pressure. If this information does not appear on your tire, maximum tire pressure under any circumstances is 30 p.s.i. Equal tire pressure should be maintained on all tires.

FIGURE 6.

CONTROLS

IGNITION SWITCH

The ignition switch is located in the center of the dashboard. Turn the key to the START position to start the engine. When the engine is running, leave the key in the ON position. To stop the engine, turn the key to the OFF position. See figure 7.



WARNING

Remove the key from the tractor when the tractor is not in use to prevent accidental starting.

THROTTLE CONTROL

The throttle control is located on the left side of the dashboard and is used to regulate the engine speed. See figure 7. The engine should be operated from $\frac{3}{4}$ to full throttle (FAST) when operating any equipment that uses the tractor engine as a source of power such as the mowing deck, snow thrower or rotary tiller.

CHOKE CONTROL

The choke control is located on the right side of the dashboard and is operated manually. Details for the choke operation are covered in the separate engine manual packed with your unit. See figure 7.

LIGHT SWITCH

The head lamps are operated by pushing the light switch located on the dashboard. The head lamps will only operate when the engine is running. See figure 7.

AMMETER

The ammeter registers the rate of battery charge or discharge. The ammeter will register on the discharging side with starting the engine. It should register on the opposite side (charging) when the engine is running in the fast position until the battery is completely charged. With a fully charged battery or with the engine idling, the ammeter will not show a charge. See figure 7.

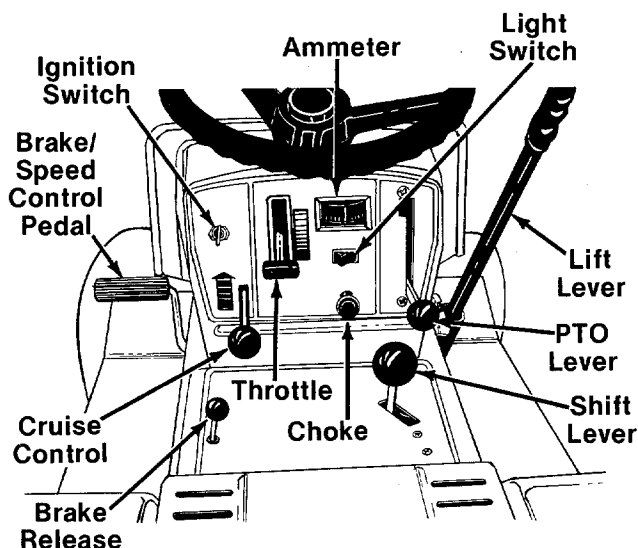


FIGURE 7.

GASOLINE TANK

The gasoline tank is located under the tractor seat. Tip the seat forward to fill the tank. Refer to figure 4.

BRAKE/SPEED CONTROL PEDAL

The brake/speed control pedal is located on the left side of the tractor. See figure 7. Depress the brake/speed control pedal to disengage the clutch and put the transaxle into neutral. Depressing the brake/speed control pedal all the way engages the disc brake on the transaxle and automatically engages the parking brake. The further the brake/speed control pedal is released, the faster the tractor will travel.



NOTE

The brake/speed control pedal must be depressed all the way and locked into the parking brake position to start the engine.

CRUISE CONTROL LEVER

The cruise control lever is located on the left side of the dash. See figure 7. This lever is used to regulate the ground speed of the tractor. When the brake/speed control pedal is released, it will release only to the speed selected by the cruise control lever.

BRAKE RELEASE LEVER

The brake release lever is located on the left side of the transmission panel. See figure 7. To release the parking brake, depress the brake/speed control pedal, then depress the brake release lever and hold while releasing the brake/speed control pedal.

SHIFT LEVER

The shift lever is located on the right side of the transmission panel. This lever is used to select either forward or reverse. See figure 7. The brake/speed control pedal must be depressed so that the unit is in neutral before shifting.



NOTE

Never force the shift lever.

LIFT LEVER

The five position lift lever is used to change the operating position of the attachments. To operate, pull the lever towards you. To release, move the lever to the right and then forward. See figure 8.

POWER TAKE-OFF (PTO) LEVER

The PTO lever is located on the right side of the dashboard. To engage the PTO, lift the lever slowly and lock it into the notch. See figure 7.



NOTE

The PTO lever **must** be in the disengaged position (down) when starting the engine and when shifting into reverse.

OPERATION



CAUTION

1. Keep all shields in place.
2. Before leaving operator's position:
 - a. Shift transmission to neutral
 - b. Set parking brake
 - c. Disengage attachment clutch
 - d. Shut off engine
 - e. Remove ignition key
3. Wait for all movement to stop before servicing machine.
4. Keep people and pets a safe distance away from machine.
5. Look to the rear before backing up.

PREPARATION



NOTE

When packaged for shipment, the machine contains no oil or gasoline. Before starting the engine, oil must be added to the engine crankcase and gasoline to the tank. **DO NOT** mix oil with gasoline.

1. Put oil in engine crankcase. Refer to separate engine manual packed with your unit for engine oil recommendations.
2. Fill the fuel tank with clean, fresh, lead-free, low-lead or regular grade leaded gasoline.
3. Check the oil level in the hydrostatic transmission. Refer to Maintenance Section on page 13.

OPERATING THE TRACTOR



This unit is equipped with a safety interlock system for your protection. The purpose of the safety interlock system is to prevent the engine from cranking or starting unless the brake/speed control pedal is depressed and the PTO lever is in the disengaged position. In addition, the PTO lever must be in the disengaged position when the unit is put into reverse or the engine will shut off.



Do not operate the tractor if the interlock system is malfunctioning because it is a safety device, designed for protection.

1. Place the PTO lever in the OFF position.
2. Pull out the choke control (a warm engine may not require choking).
3. Set the throttle control in the FAST position.
4. Depress the brake/speed control pedal all the way.
5. Turn the ignition key to the START position. After the engine starts, release the key.
6. Push in the choke control after the engine starts.
7. With the brake/speed control pedal depressed, move the shift lever into forward or reverse.
8. With the brake/speed control pedal still depressed, push down on the brake release and hold while releasing the brake/speed control pedal. Release the pedal until the desired speed is set. Set the cruise control.
9. When stopping, depress the brake/speed control pedal to apply both the clutch and the brake.
10. To shut off the engine, turn the ignition key to the left to the OFF position. Remove the key to prevent accidental starting while equipment is unattended.



If you strike a foreign object, stop the engine. Remove wire from spark plug, thoroughly inspect the mower for any damage, and repair the damage before restarting and operating the mower.

ADJUSTMENTS



Disconnect the spark plug wire and ground against the engine before performing any adjustments, repairs or maintenance.

SEAT ADJUSTMENT

Model 842—The tractor seat is adjustable to four positions. To change positions, tip the seat all the way forward and lift it out of the slots on each side. Refer to figure 4A.

Model 843—To adjust the position of the seat, loosen the four self-tapping screws on the bottom of the seat. See figure 4B. Slide the seat forward or backward as desired. Retighten the self-tapping screws.

HYDROSTATIC CONTROL ADJUSTMENT (See figure 8)

To adjust the hydrostatic controls, proceed as follows.

1. Disconnect the control rod from the speed control transfer assembly by removing the hex nut, lock washer and shoulder spacer from the ball joint assembly on the end of the control rod.
2. Loosen the two 1/4" hex nuts on the pintle control plate.
3. Push back on the control rod so that the spacer on the pintle drive plate contacts the stop screw.
4. Adjust the stop screw until the shift lever can move freely in the neutral slot (forward to reverse).
5. Move shift lever to forward position, and move pintle control plate to fast forward (position shown in figure 8). Be certain to hold the pintle control plate in this position as you tighten the hex nuts in steps 6 and 7.
6. Using a 3/4" wrench, turn the center nut on pintle control plate clockwise until it stops.

7. Tighten securely the two 1/4" hex nuts on the pintle control plate.
8. Reassemble the ball joint assembly on the end of the control rod to the speed control transfer assembly.
9. Loosen the two lock nuts on the control rod.
10. Lock out the brake/speed control pedal (all the way forward position).
11. Adjust the control rod so the pintle control assembly firmly contacts the stop screw. Tighten lock nuts on the control rod.
12. Check the brake adjustment as instructed in the following section.

BRAKE ADJUSTMENT

During normal operation of this machine, the

brakes are subject to wear and will require periodic examination and adjustment.



CAUTION

Do not adjust the brake while the engine is running. Be sure to block the wheels of the tractor before making the brake adjustment.

To check the brake adjustment, move the cruise control lever to slow position. Block the rear wheels off the ground, and release the brake/speed control pedal. The brake disc must be free. If adjustment is necessary, proceed as follows.

Tighten the hex lock nut shown in figure 9, then back it off until the brake disc is free. Test the brakes and readjust if necessary.

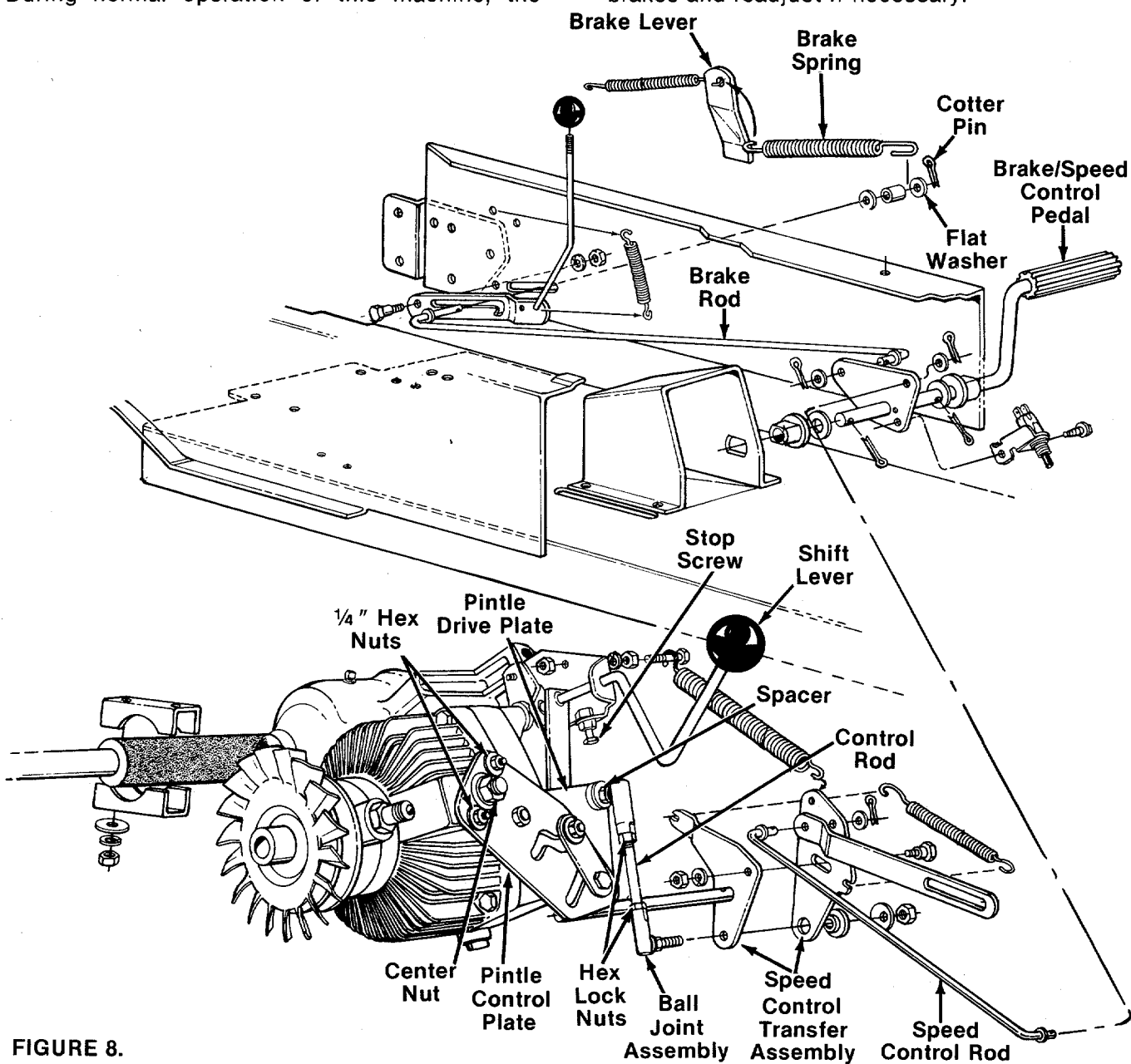


FIGURE 8.

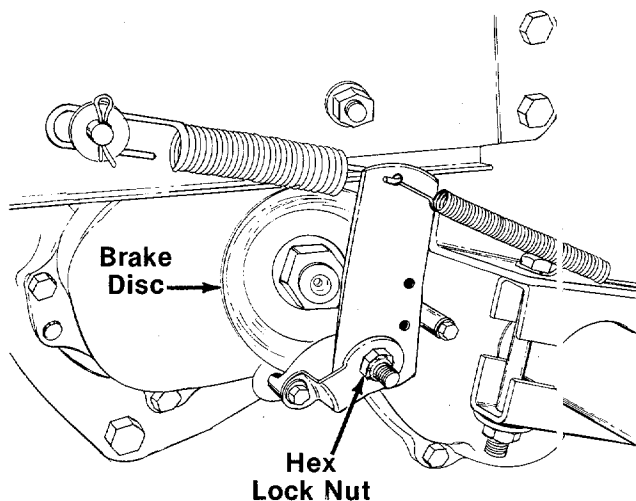


FIGURE 9.

NEUTRAL ADJUSTMENT (See figure 8)

If the tractor creeps with the brake/speed control pedal depressed to the neutral position, adjust as follows.

1. Remove the transmission panel by unscrewing the control knobs, removing two truss machine screws and disconnecting the safety switch.
2. Block up the tractor securely so that the rear wheels are off the ground.
3. Release the brake/speed control pedal.
4. The brake spring is located by the left rear wheel. Disconnect the brake spring from the brake rod by removing the cotter pin and flat washer on the end of the rod. Replace flat washer and cotter pin loosely.
5. Lock out the brake/speed control pedal (all the way forward position).
6. Loosen the two 1/4" hex nuts on the pintle control plate.
7. Start the engine.
8. Using a 3/4" wrench, turn the center nut on the pintle control plate until both wheels stop.



NOTE

If the wheels turn backward, turn the nut clockwise. If the wheels turn forward, turn the nut counterclockwise.

9. Tighten the two 1/4" hex nuts securely.
10. Reassemble the brake spring, and secure with flat washer and cotter pin.
11. Reassemble the transmission cover.

DECK ADJUSTMENT LINKS

If an uneven cut is obtained, the deck may be adjusted. Adjustable lift link assemblies are located on the left side of the unit. Refer to Ref. Nos. 16, 34, and 54 on page 30.

To adjust the deck, remove the hairpin cotter and washer from the clevis pin. Thread eyebolt up or down the adjustable link lift assembly as necessary. Replace clevis pin, washer and hairpin cotter.

REAR WHEEL TRACK ADJUSTMENT

The distance between the rear wheels can be changed from wide to narrow by removing the rear wheels one at a time and reversing them on the hub.

With the rear wheels in the narrow position, the outside of the rear wheels is even with the outside of the front wheels.

With the rear wheels in the wide position, the inside of the rear wheels is even with the outside of the front wheels.

CARBURETOR ADJUSTMENTS



If any adjustments are made to the engine while the engine is running (e.g. carburetor), disengage all clutches and blades. Keep clear of all moving parts. Be careful of heated surfaces and muffler.

Minor carburetor adjustments may be required to compensate for differences in fuel, temperature, altitude and load.

Refer to separate engine manual for carburetor adjustment information.

STEERING WHEEL ADJUSTMENT

There are four height positions for the steering wheel. To adjust the height of the steering wheel, remove the hairpin cotter and clevis pin on the steering shaft. Place the steering wheel in the position desired and secure with hairpin cotter and clevis pin. See reference numbers 56 and 57 on page 28.

LUBRICATION

STEERING GEARS

Wipe off the old grease and dirt. After every 25 hours of operation place an automotive multi-purpose grease in the teeth of the segment and pinion gears. See figure 10.

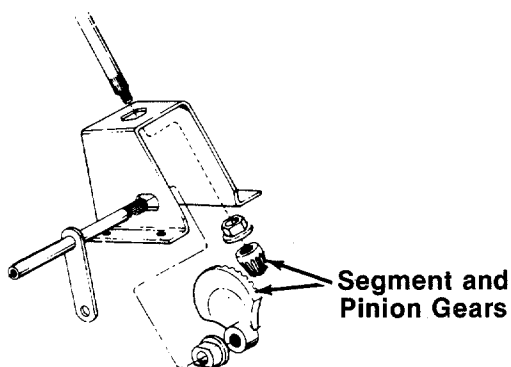


FIGURE 10.

TRANSAXLE

Check the oil level four times a year. Lubricant should be at the point of overflowing. Use E.P. 90 oil. Drain and refill every two years. Capacity 2 $\frac{3}{4}$ pints. See figure 11.

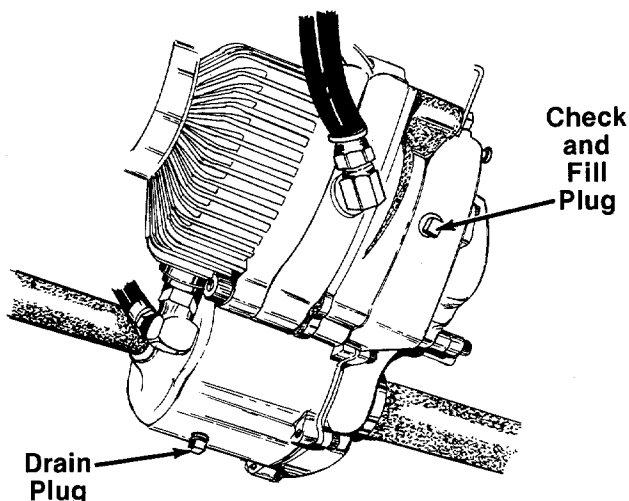


FIGURE 11.

LINKAGE

Once a season lubricate all the pivot points on the brake and lift linkage with SAE 30 engine oil.

FRONT WHEELS

The front wheels are provided with grease fittings. Lubricate at least once a season with automotive multi-purpose grease.

PIVOT POINTS

Lubricate all pivot points with light oil at least once a season.

BALL JOINTS

The ball joints and drag link ends are permanently lubricated.

MAINTENANCE



WARNING

Disconnect the spark plug wire and ground against the engine before performing any adjustments, repairs or maintenance.

HYDROSTATIC OIL LEVEL

The hydrostatic oil level should be checked prior to initial use, and after every 8 hours of operation.

To check the hydrostatic oil level, remove the transmission panel by unscrewing the control knobs, removing two truss machine screws and unplugging the safety switch. The oil level must be between the low and high marks on the reservoir tank. See figure 12.

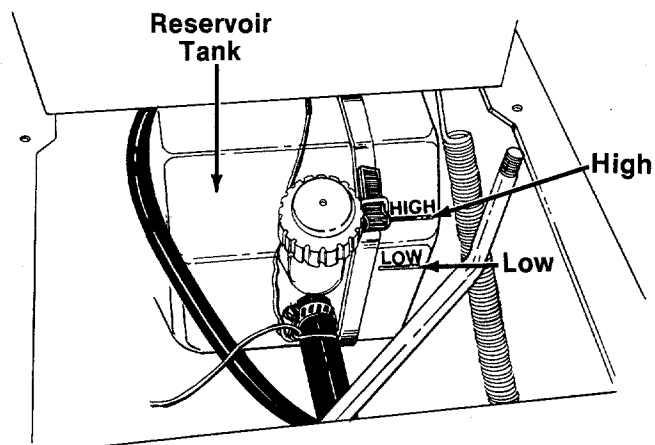


FIGURE 12.

1.5 Gal Sae 30W

The following fluids are recommended for use in the hydrostatic transmission.

1. Mobil Fluid 300
2. Texaco TL-2209
3. Dexron B (General Motors)
4. M2C-33F and M2B-41A (Ford Motor)
5. Hy-Tran (International Harvester)
6. 10W + Straight Viscosity—SE, CC or CD Rated Engine Oil.
- **7. 20W + Straight Viscosity—SE, CC or CD Rated Engine Oil.
8. 30W + Straight Viscosity—SE, CC or CD Rated Engine Oil.

**Preferred.



NOTE

Never use a multi-viscosity oil.

Change oil and filter initially after twenty hours of operation; thereafter, change every 100 hours or once a year.

OIL FILTER

A full flow replaceable oil filter, located in the oil lines under the frame near the right rear wheel, should be replaced initially after twenty hours of operation. Thereafter, replace every 100 hours for commercial or industrial applications and yearly for normal usage. It can be removed by turning it counterclockwise by hand. Use Fram filter number PH-16; order part number 727-0162.

CRANKCASE OIL

To ensure maximum engine performance, perform the following periodic maintenance:

Check the oil level in the crankcase before each use of the machine and after every two hours of operation. Keep the oil level between ADD and FULL. See figure 13.

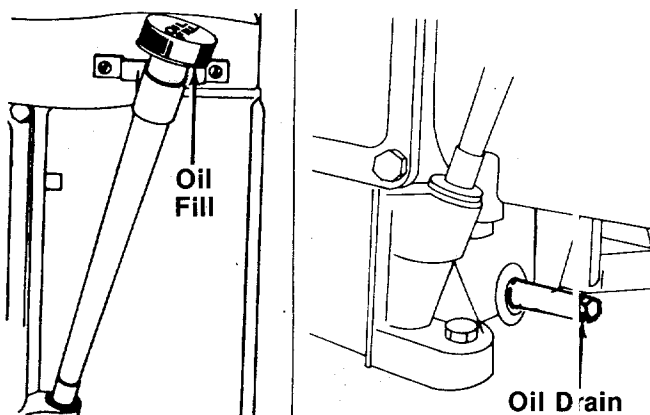


FIGURE 13.

After the first two hours of operating a new engine, drain the oil (see figure 11) from the crankcase while engine is still hot and refill crankcase with new oil; thereafter change the oil after every 25 hours of operation. This procedure ensures minimum wear of engine parts. To change the oil, proceed as follows:

- Step 1. Remove oil filler plug.
- Step 2. Drain the oil.
- Step 3. Replace oil filler plug.
- Step 4. Refill crankcase with oil. Refer to separate engine manual for quantity and type of oil.

FUEL FILTER

Your unit is equipped with a replaceable in-line fuel filter. Replace filter whenever contamination or discoloration is noticed. Order replacement filter through your authorized engine service dealer.

ENGINE

Refer to separate engine manual for all engine maintenance procedures.

WHEEL ALIGNMENT

The front wheels should toe-in approximately 1/8". Measure the distances A and B on the front wheels. See figure 14.



NOTE

Dimension B should be approximately 1/8 inch less than dimension A.

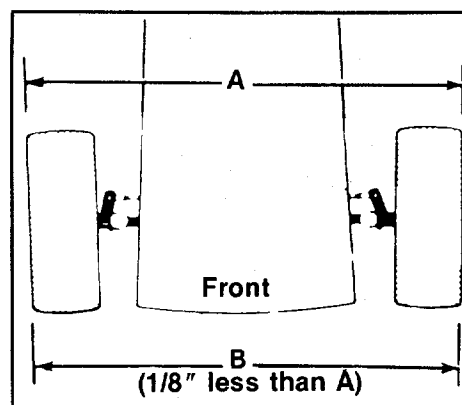


FIGURE 14.

To adjust the toe-in, loosen the hex jam nut, remove the elastic lock nut, lift the tie rod end out of the hole in the steering arm and screw the tie rod end in or out as necessary. See figure 15.

Reassemble the tie rod end after the correct alignment is made.

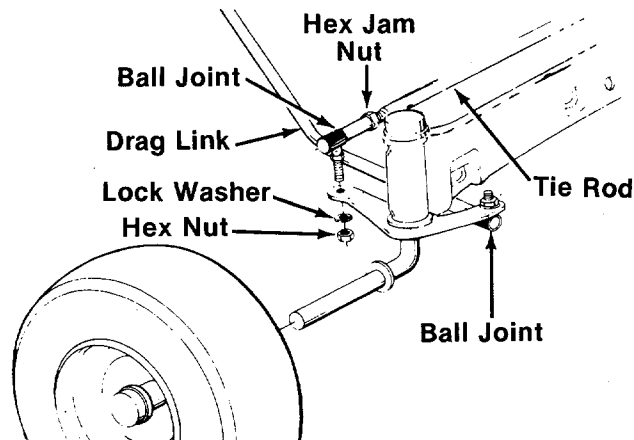


FIGURE 15.

DRAG LINK

If the drag link or ball joints are changed, the new assembly must be adjusted to the exact same length as the original. If adjusted incorrectly, it will allow the tractor to turn sharper one direction than the other.

To take off the drag link, remove the nuts and lock washers holding the ball joint to the steering gear and left front axle bracket. See figure 15.

MAINTENANCE OF BATTERY

1. Check electrolyte level periodically (at least every two weeks). Keep the level to the split rings. Use only distilled water or a good quality drinking water. Never add acid or any other chemicals to the battery after initial activation.
2. The battery should be checked with a hydrometer after every 25 hours of operation. If the specific gravity is less than 1.225, the battery should be recharged. Maximum charge rate 5 AMPS.
3. Coat the terminals and exposed wire with a thin coat of grease or petroleum jelly for longer service and protection against corrosion.
4. The battery should be kept clean. Any deposits of acid should be neutralized with soda and water. Be careful not to get this solution in the cells.
5. Avoid tipping the battery. Even a "sealed" battery will leak electrolyte when tipped.

STORAGE OF THE BATTERY

1. Charge battery using normal methods. NEVER store discharged battery as it will not recover.
2. When storing battery for extended periods, disconnect battery cables. Removing battery from unit is recommended.
3. Store in cold, dry place.
4. Recharge battery whenever the specific gravity is less than 1.225, before returning to service, or every two months, whichever occurs first.

COMMON CAUSES FOR BATTERY FAILURE

1. Overcharging
2. Undercharging
3. Lack of water
4. Loose hold downs and/or corroded connections
5. Excessive loads
6. Battery electrolyte substitutes
7. Freezing of electrolyte



These failures do not constitute warranty.

BATTERY REMOVAL OR INSTALLATION



When removing the battery, follow this order of disassembly to prevent your wrench from shorting against the frame.

1. Remove the Negative cable.
2. Remove the Positive cable.

To install a battery:

1. Attach the Positive cable.
2. Attach the Negative cable.

JUMP STARTING

1. Attach the first jumper cable from the Positive terminal of the good battery to the Positive terminal of the dead battery.
2. Attach the second jumper cable from the Negative terminal of the good battery to the FRAME OF THE UNIT WITH THE DEAD BATTERY.



Failure to use this starting procedure could cause sparking, and the gases in either battery could explode.

INSTALLATION OF TIRE TO RIM



The following procedure must be followed when removing or installing a tire to the rim.

1. Be sure rim is clean and rust free.
2. Lubricate both the tire and rim generously.
3. Never inflate to over 30 p.s.i. to seat beads. Excessive inflation pressure when seating beads may cause tire/rim assembly to burst with force sufficient to cause serious injury.

BELT REMOVAL AND REPLACEMENT

Rear Drive Belt

1. If a cutting deck is attached to your tractor, remove it.

2. Roll the bottom edge of belt off the jackshaft pulley. See figure 16.

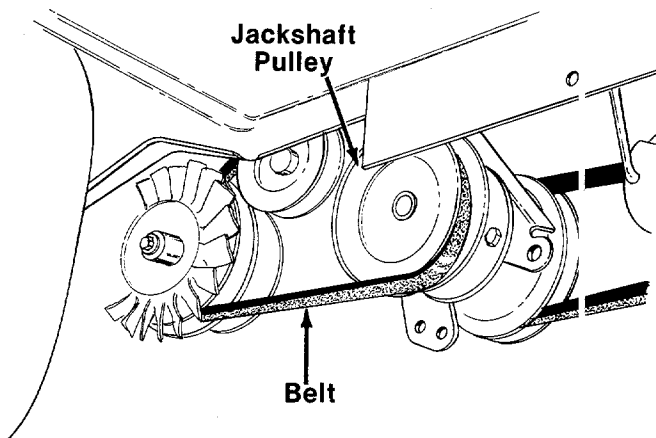


FIGURE 16.

3. Slip the belt off the transaxle pulley.
4. Pull idler pulley down, and remove the belt. See figure 17.

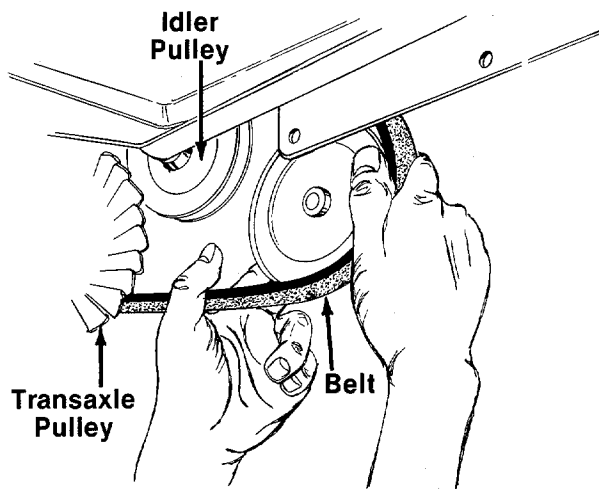


FIGURE 17.

5. Reassemble in reverse order using a new belt.

Front Drive Belt

1. First remove the rear drive belt as instructed in preceding section.
2. Push forward on the jackshaft assembly, and slip the back of the belt at the jackshaft off the jackshaft pulley. See figure 18.

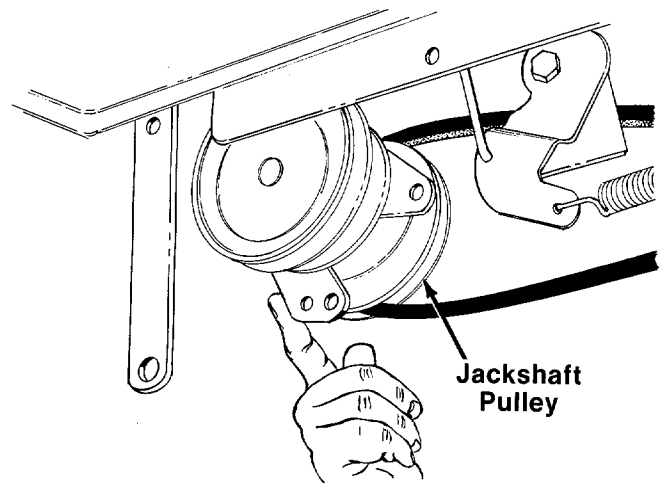


FIGURE 18.

3. Pull belt through the idler arm mounting bracket.
4. Release the belt guard by unscrewing the "L" bolt next to the engine pulley. See figure 19.

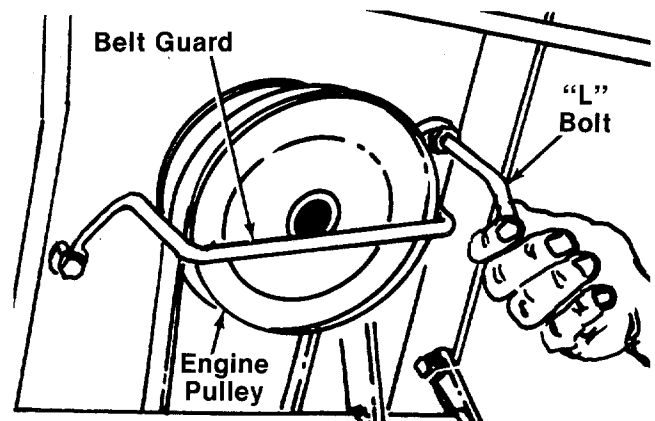


FIGURE 19.

5. Swing the belt guard forward towards the front of the tractor.



WARNING

Observe the way the belt is twisted. If the new belt is installed backwards, the tractor will run backwards.

6. Slip belt off the engine pulley. See figure 20.
7. Install the new belt by hooking it over the engine pulley and twisting the belt to the left as you attach it to the jackshaft pulley.
8. Test the operation of the tractor to make certain the belt has been installed correctly.

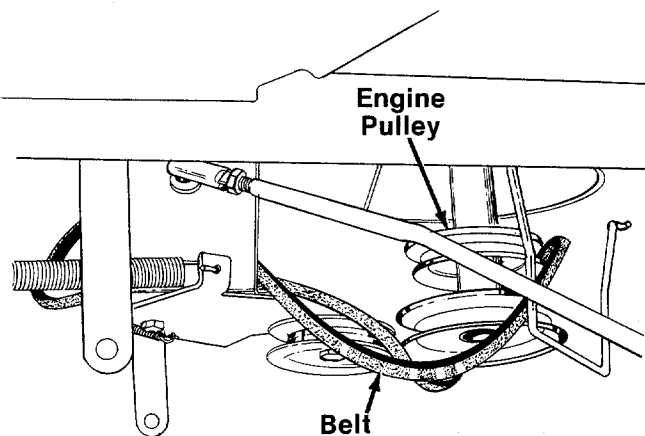


FIGURE 20.

OFF-SEASON STORAGE

If the machine is to be inoperative for a period longer than 30 days, prepare for storage as follows.

1. Clean the engine and the entire unit thoroughly.
2. Lubricate all lubrication points. Wipe the entire machine with an oiled rag to protect the surfaces.
3. Refer to the engine manual for correct engine storage instructions. The engine must be completely drained of fuel to prevent gum deposits from forming on essential carburetor parts, fuel lines and fuel tanks.
4. Refer to battery storage instructions on page 13.
5. Store unit in a clean, dry area.

NOTE

When storing any type of power equipment in an unventilated or metal storage shed, care should be taken to rustproof the equipment. Using a light oil or silicone, coat the equipment, especially any chains, springs, bearings and cables.

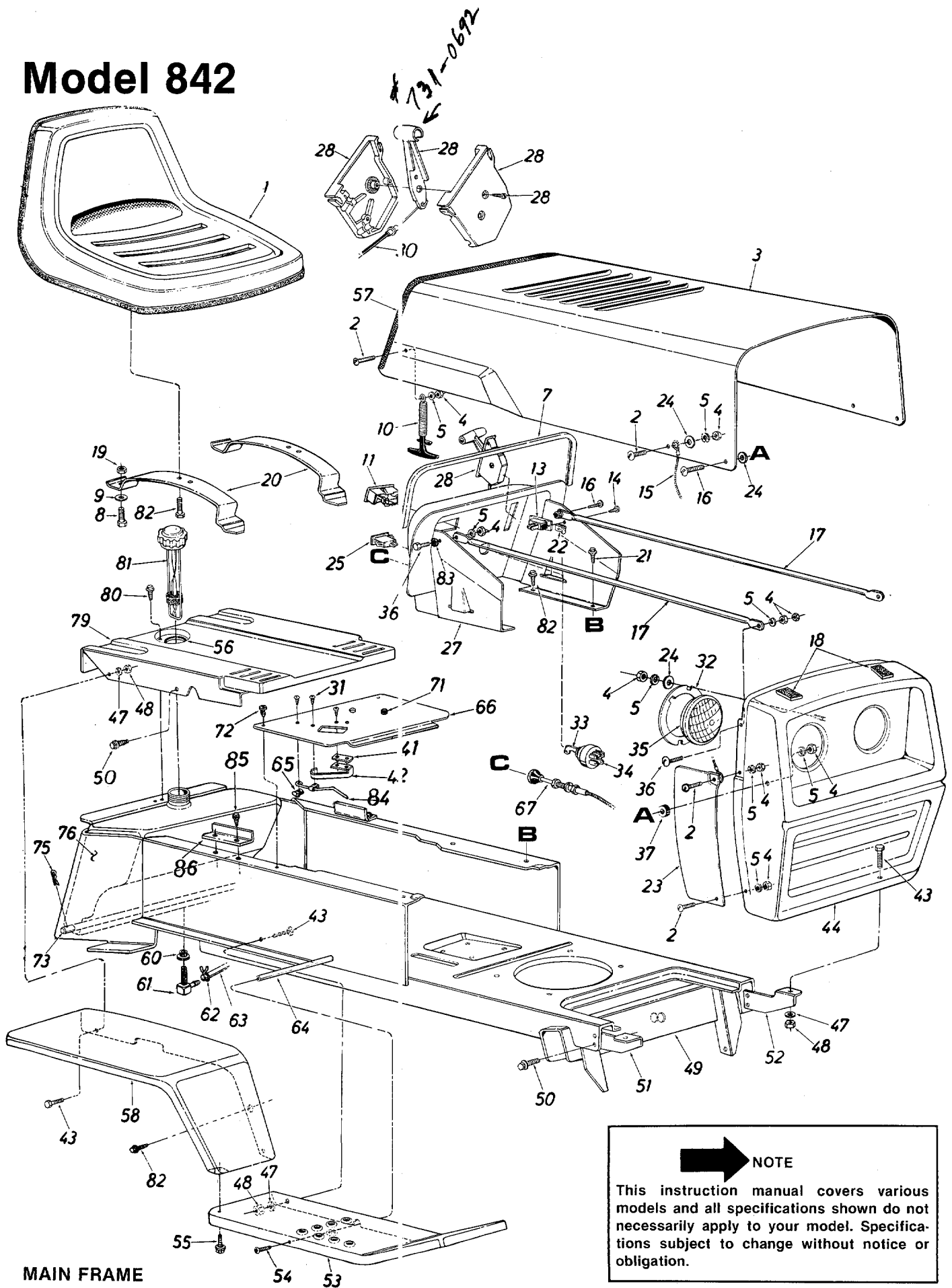
TROUBLE SHOOTING CHART FOR ELECTRIC START MODELS

TROUBLE	LOOK FOR	REMEDY
Engine will not crank	Battery installed incorrectly	The battery must be installed with the negative, identified at the terminal post by (Neg, N or - grounded. The positive (Pos, P or +) attaches to the large cable from the solenoid. The small red wire from the fuse holder or circuit breaker is also attached to the positive terminal.
	Blown fuse or circuit breaker	Replace fuse with 7½ amp. fuse ¼ x 1¼" lg. Circuit breaker will reset itself when it cools off. Fuses or circuit breakers seldom open or fail without a reason. The problem must be corrected. Check for loose connections in the fuse holder. Replace fuse holder if necessary. A dead short may be in the cranking or charging circuit where the insulation may have rubbed through and exposed the bare wire. Replace the wire or repair with electrician's tape if the wire strands have not been damaged. Note: Look for a wire pinched between body panels, burned by the exhaust pipe or muffler or rubbed against a moving part.
	Battery is dead or weak	<p>Use a hydrometer to check the condition of the battery. The Specific Gravity (s.g.) should be 1.265 at 80° F. (1.215 s.g. minimum needed for cranking engine). The reason for the battery failing must be determined. (1) Defective battery. Battery will not accept or hold a full charge. (2) Short circuit. Check for grounded wire. (3) Charging system not working, either engine alternator or trickle charger.</p> <p>Trickle Charger. Check with multimeter. Charger 725-0578—input 120 V A.C., no load output 13.5 V D.C. rated load current 1 amp. Charger 725-0507—input 120 V A.C., no load output 17.4 V D.C., rated load current 1½ amp.</p> <p>Alternator (dual or single circuit) The charging system is an alternator located under the flywheel. It is unregulated and rated 3 amp. at 3600 r.p.m. A diode (rectifier) is located in the output lead just before the wire harness plug on the engine side.</p> <div style="text-align: center;"> </div> <p>The diode changes A.C. to D.C. to charge the battery. A bad diode can either fail to charge the battery or discharge the battery if the alternator is shorted as well as the diode. To test: (1) Disconnect charger lead from the battery (small red wire). (2) Connect 12 V small test lamp between the 3 amp. D.C. charge lead and the positive terminal of the battery. (3) With the engine off, the lamp should not light. If it does, the diode and possibly the alternator should be replaced. (4) Start the engine. The lamp should light. If it does not, the alternator (stator) or lead wire is bad and should be replaced.</p>
	Mechanical failure. (Wires and switches)	The interlock system includes two mechanical activated switches which are wired in series in the circuit used to energize the starter solenoid. While testing the interlock system, you will make the mower temporarily unsafe by permitting the engine to be started with the blade and clutch engaged. WARNING: While testing, disengage the clutch, shut off the blade control, set the parking brake and place the gear shift lever in neutral. Attach a wire (minimum 18 gauge) to the positive terminal of the battery and touch the other end to the small terminal on the solenoid. If the engine does not crank: (1) There is a loose connection or poor ground. (2) The solenoid may be bad. The solenoid can be checked by using a heavy wire (#8 gauge minimum) and jumping between the two large terminals. If the engine cranks, the solenoid is bad. (3) If the engine does not crank when you jump the solenoid, have the starter motor tested by an authorized engine dealer. If the engine does crank, the problem is with one of the safety switches, ignition switch or the wire between the fuse holder (or circuit breaker) and the small terminal on the solenoid. Note: Look for a poor connection at the switches or a defective switch. Replace if necessary.
Engine cranks but will not start	Throttle or choke not in starting position	Check owner's guide for correct position for throttle control and choke (if separate control) for starting.

TROUBLE SHOOTING CHART FOR ELECTRIC START MODELS

TROUBLE	LOOK FOR	REMEDY
	No spark to spark plug	Spark plug lead disconnected. Connect lead. Hold spark plug lead away from engine block about 1/8". Crank engine. There should be a spark. If not, have engine repaired at authorized engine service dealer. Faulty spark plug. To test, remove spark plug. Attach spark plug lead to spark plug. Ground the spark plug body against the engine block. Crank the engine. The spark plug should fire at the electrode. Replace if it does not.
	No fuel to the carburetor	Gasoline tank empty. Fill. Fuel valve shut off. Open valve. Valve is located either at the bottom of the fuel tank or on the carburetor. Fuel line plugged. Remove and clean.
	Air filter dirty	If the air cleaner is dirty, the engine may not start. Clean or replace as recommended by the engine manufacturer.
Engine smokes	Engine loses crankcase vacuum	Dipstick not seated or broken. Replace defective part. Engine breather defective. Replace.
Excessive vibration	Bent or damaged blade spindle	Stop engine immediately. Check all pulleys, blade adapters, keys and bolts for tightness and damage. Tighten or replace any damaged parts.
	Bent blade	Stop engine immediately. Replace damaged blade. Only use original equipment blades.
Mower will not discharge grass or leaves in cut strips	Engine speed low Transmission selection Blades short or dull	Throttle must be set between 3/4 and full throttle. Use lower transmission gear. The slower your ground speed, the better the quality of cut. Sharpen or replace blades (uncut strip problem only).

Model 842



MAIN FRAME

Model 842

PARTS LIST FOR MAIN FRAME MODEL 842 GARDEN TRACTOR

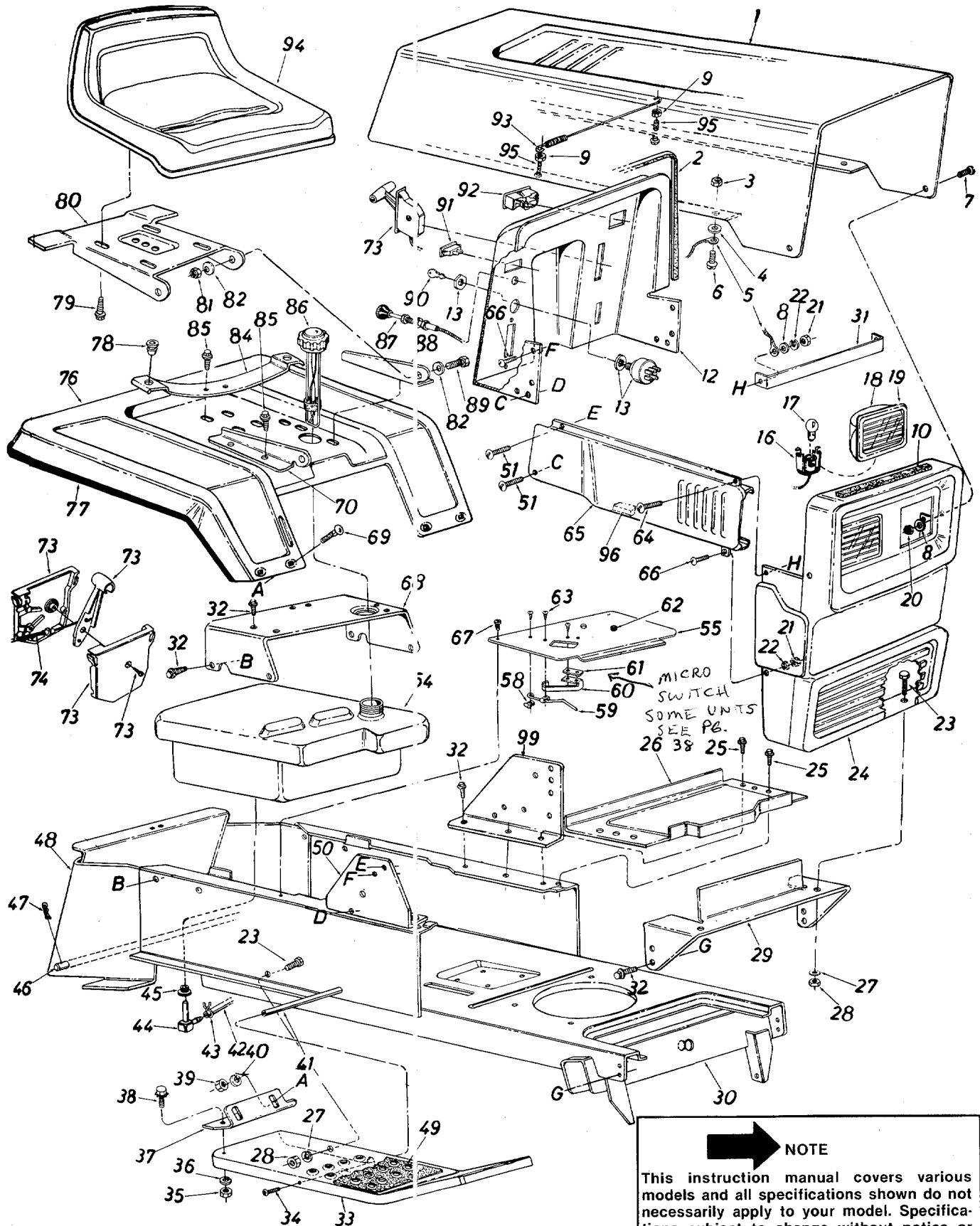
REF. NO.	PART NO.	COLOR CODE	DESCRIPTION	NEW PART	REF. NO.	PART NO.	COLOR CODE	DESCRIPTION	NEW PART
1	757-0308		Seat Assembly		42	732-0405		Switch Actuator Spring Lever	
2	710-0286		Truss Mach. Scr. 1/4-20 x .50" Lg.*		43	710-0118		Hex Scr. 5/16-18 x .75" Lg.*	
3	13808 —462		Hood		44	13801 —462		Grille Ass'y. (Painted)	
4	712-0287		Hex Nut 1/4-20 Thd.*			14226		Grille Ass'y. (Chrome)	
5	736-0329		L-Wash. 1/4" Scr.*		46	710-0286		Truss Mach. Scr. 1/4-20 x .50" Lg.*	
6	710-0286		Truss Mach. Scr. 1/4-20 x .50" Lg.*		47	736-0119		L-Wash. 5/16" Scr.*	
7	731-0511		Vinyl Molding Strip—29"		48	712-0267		Hex Nut 5/16-18 Thd.*	
8	710-0689		Hex Nylon Scr. 1/2-13 x .75" Lg.		49	13820		Lower Frame Ass'y.	
9	736-0192		FI-Wash. .50" I.D. x 1.00" O.D. x .090		50	710-0726		Hex Thd. Rolling Scr. 5/16" x .75" Lg.	
10	723-0296		Hood Latch Ass'y.		51	13862		Grille Mount Brkt.—R.H.	
11	725-0925		Ammeter		52	13863		Grille Mount Brkt.—L.H.	
13	725-0459		Circuit Breaker 8 Amp.		53	13828 —462		Running Board—R.H.	
14	710-0351		Hex Tap Scr. #10 x .50" Lg.*			13827 —462		Running Board—L.H. (Not Shown)	
15	727-0199		Hood Stop		54	710-0323		Truss Mach. Scr. 5/16-18 x .75" Lg.*	
16	710-0255		Truss Mach. Scr. 1/4-20 x .75" Lg.*		55	710-0726		Hex Thd. Rolling Scr. 5/16-24 x .75" Lg.	
17	749-0651		Grille Positioning Rod	N	56	735-0179		Grommet (Gas Tank Neck)	
18	722-0135		PVC Foam Strip 1/2 x 1.00" x 2.00" Lg.		57	731-0511		Vinyl Moulding Strip—30"	
19	712-0206		Hex Nut 1/2-13 Thd.*		58	13810 —462		Fender Ass'y.—R.H.	
20	13123		Seat Spring			13809 —462		Fender Ass'y.—L.H. (Not Shown)	
21	710-0599		Hex Thd. Rolling Scr. 1/4" x .50" Lg.		60	735-0149		Bushing (Gas Tank)	
22	712-0344		Speed Nut #10Z		61	751-3054		90° Nipple	
23	14748 —462		Grille Side Panel—R.H.		62	726-0207		Hose Clamp 3/8"	
	14749 —462		Grille Side Panel—L.H. (Not Shown)		63	751-0173		Gas Line 46" Lg.	
24	736-0173		FI-Wash. 1/4" I.D.		64	738-0435		Running Board Rod	
25	725-0634		Light Switch		65	712-0147		Speed Nut #10-24 U-Type	
26	710-0166		Truss Hd. Scr. 1/4-20 x 1.00" Lg.*		66	14466		Transmission Cover Ass'y.	
27	16325		Dash Panel Ass'y.		67	746-0394		Choke Control Comp. (16 and 18 H.P.)	
28	831-0692		Throttle Control Box Comp.		71	731-0405		Snap Bushing	
30	746-0503		Throttle Control Cable		72	710-0351		Truss Hd. Scr. #10 x .50" Lg.	
31	710-0351		Truss Hd. Scr. #10 x .50" Lg.		73	738-0482		Hitch Rod	
32	09960		Head Lamp Retainer		75	714-0147		Internal Cotter Pin	
33	725-0201		Ignition Key		76	751-0259		Gas Tank	
34	725-0267		Ignition Switch		79	13814		Seat Plate	
35	725-0222		Head Lamp		80	710-0726		Hex Thd. Rolling Scr. 5/16-24 x .75" Lg.	
36	710-0255		Truss Machine Scr. 1/4-20 x .75" Lg.*		81	723-0346		Gas Gauge	
37	735-0144		Rubber Wash. .50" I.D. x 1.00 O.D. x .25 Thk.		82	710-0726		Hex Thd. Rolling Scr. 5/16-24 x .75" Lg.	
38	710-0286		Truss Mach. Scr. 1/4-20 x .50" Lg.*		83	736-0222		External Wash. 1/4" I.D.	
39	725-0764		Reverse Lockout Wire Harness		84	732-0476		Shift Lever Spring	
41	736-0222		Insulator Nut Plate		85	710-0726		Hex Thd. Rolling Scr. 5/16-24 x .75" Lg.	N
					86	13831		Seat Spring Guide	

(462—Red Flake)

*For faster service obtain standard nuts, bolts and washers locally. If these items cannot be obtained locally, order by part number and size shown on parts list.

When ordering parts if color or finish is important, use the appropriate color code shown. (e.g. Red Flake Finish—12369 (462).)

Model 843

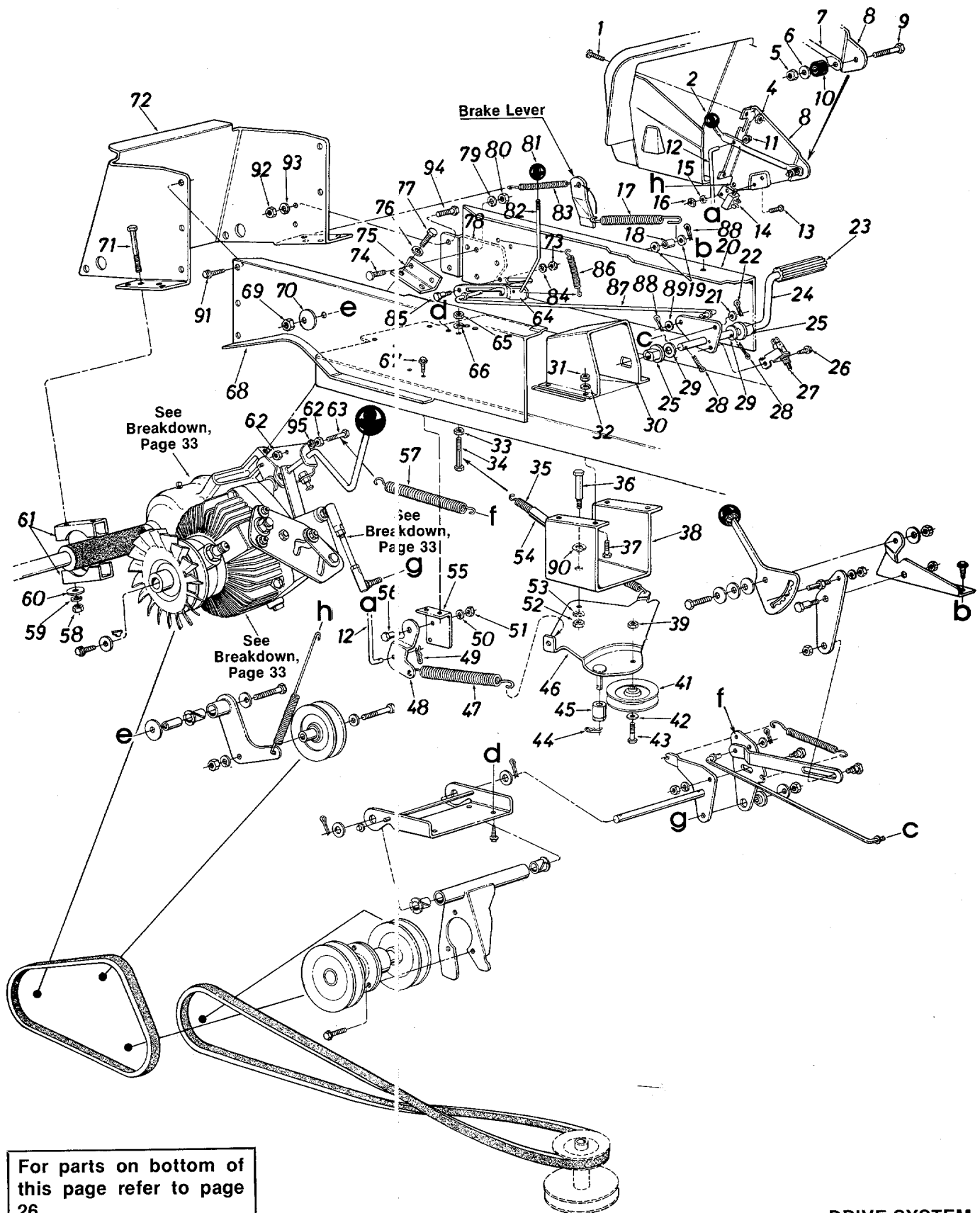


Model 843

PARTS LIST FOR MAIN FRAME MODEL 843 GARDEN TRACTOR

REF. NO.	PART NO.	COLOR CODE	DESCRIPTION	NEW PART	REF. NO.	PART NO.	COLOR CODE	DESCRIPTION	NEW PART
1	15808		Hood		51	710-0642		Hex Wash. Hd. Tap Scr. 1/4 x .75" Lg.	
2	731-0511		Trim Strip—27" Lg.		54	751-0367		Fuel Tank	
4	736-0931		Fl-Wash. .20" I.D. x .41" O.D.		55	16173		Transmission Cover Ass'y.	N
5	727-0290		Hood Stop		56	732-0405		Switch Actuator Spring Lever	
6	710-0473		Truss Hd. Mach. Scr. #10-24 x .50" Lg.*		57	725-0268		Safety Switch	
7	710-0258		Hex Bolt 1/4-20 x .62" Lg.*		58	712-0147		Speed Nut #10-24 U-Type	
8	736-0463		Fl-Wash. 1/4" I.D.*		59	732-0467		Shift Lever Spring	N
9	712-0272		Hex Sem Nut #10-24 Thd.*		60	732-0405		Switch Actuator Spring Lever	
10	722-0155		Foam Strip 3/8" x 1" x 14"		61	726-0222		Insulator Plate	
12	16227		Dash Ass'y.	N	62	731-0405		Snap Bushing	
13	725-0267		Ignition Switch		63	710-0351		Truss Mach. Scr. #10 x .50"	
16	725-0964		Socket		64	710-0255		Truss Hd. Scr. 1/4-20 x .75"*	
17	725-0963		Lamp		65	15814		Side Panel—R.H.	
18	731-0705		Headlight Housing			15815		Side Panel—L.H. (Not Shown)	
19	731-0706		Lens		66	710-0286		Truss Mach. Scr. 1/4-20 x .50" Lg.*	
20	712-0107		Hex L-Nut 1/4-20 Thd.		67	710-0351		Truss Mach. "B" Tap Scr. #10 x .50" Lg.	
21	712-0287		Hex Nut 1/4-20 Thd.*		68	15849		Seat Mounting Channel	
22	736-0329		L-Wash. 1/4" I.D.*		69	710-0167		Carriage Bolt 1/4-20 x .50"*	
23	710-0118		Hex Bolt 5/16-18 x .75" Lg.*		70	15802		Seat Bracket—R.H.	
24	15804		Grille		72	710-0600		Hex Wash Hd. Self-Tap Scr. 5/16-24 x .50" Lg.	
25	710-0599		Hex Wash. Hd. Scr. 1/4" x .50" Lg.		73	831-0692		Throttle Control Box Ass'y.	
26	13379		Battery Plate		74	746-0503		Throttle Control Wire	
27	736-0119		L-Wash. 5/16" I.D.*		76	15886		Rear Fender	
28	712-0267		Hex Nut 5/16-18 Thd.*		77	731-0511		Trim Strip—81"	
29	15825		Grille Mounting Bracket	N	78	731-0555		Grommet	
30	13820		Lower Frame Ass'y.		79	710-0623		Hex Wash. Hd. AB-Tap Scr. 3/8 x .75" Lg.	
31	15931		Tie Strap—Grille/Side Panel		80	15607		Seat Pivot Bracket	
32	710-0726		Hex Thd. Rolling Scr. 5/16-24 x .75" Lg.		81	712-0158		Hex Cent. L-Nut 5/16-18 Thd.	
33	13828		Running Board—R.H.		82	736-0242		Belleville Wash. .34" I.D. x .88" O.D.	
	13827		Running Board—L.H. (Not Shown)		84	732-0431		Seat Spring	
34	710-0323		Truss Mach. Scr. 5/16-18 x .75" Lg.*		85	710-0607		Hex Wash. Hd. Self-Tap Scr. 5/16-18 x .50" Lg.	
35	712-0267		Hex Nut 5/16-18 Thd.*		86	751-0370		Gas Cap w/Gauge	
36	736-0242		Bell-Wash. .34" I.D. x .87"		87	746-0394		Choke Control Comp.	
37	15846		Fender Brkt.—R.H.		88	15803		Seat Bracket—L.H.	
	15847		Fender Brkt.—L.H. (Not Shown)		89	710-0118		Hex Bolt 5/16-18 x .75" Lg.*	
38	710-0118		Hex Bolt 5/16-18 x .75" Lg.*		90	725-0201		Ignition Key	
39	712-0287		Hex Nut 1/4-20 Thd.*		91	725-0634		Light Switch	
40	736-0329		L-Wash. 1/4" I.D.*		92	725-0925		Ammeter	
41	738-0435		Running Board Rod		93	732-0462		Hood Spring	
42	751-0173		Fuel Line 40" Lg.		94	757-0308		Seat Ass'y.	
43	726-0207		Hose Clamp 3/8"		95	710-0749		Hex Screw #10-24 x 1.0" Lg.*	
44	751-3054		90° Nipple		96	735-0244		Rubber Strip 1/2" Sq. x 2 1/2" Lg.	
45	735-0149		Bushing (Fuel Tank)		99	15829		Dash Support Brkt.—L.H.	
46	738-0482		Hitch Rod						
47	714-0147		Internal Cotterpin						
48	13813		Hitch Plate						
49	723-0360		Foot Pad (Optional)						
50	15828		Dash Support Brkt.—R.H.						

Models 842 and 843



DRIVE SYSTEM

Models 842 and 843

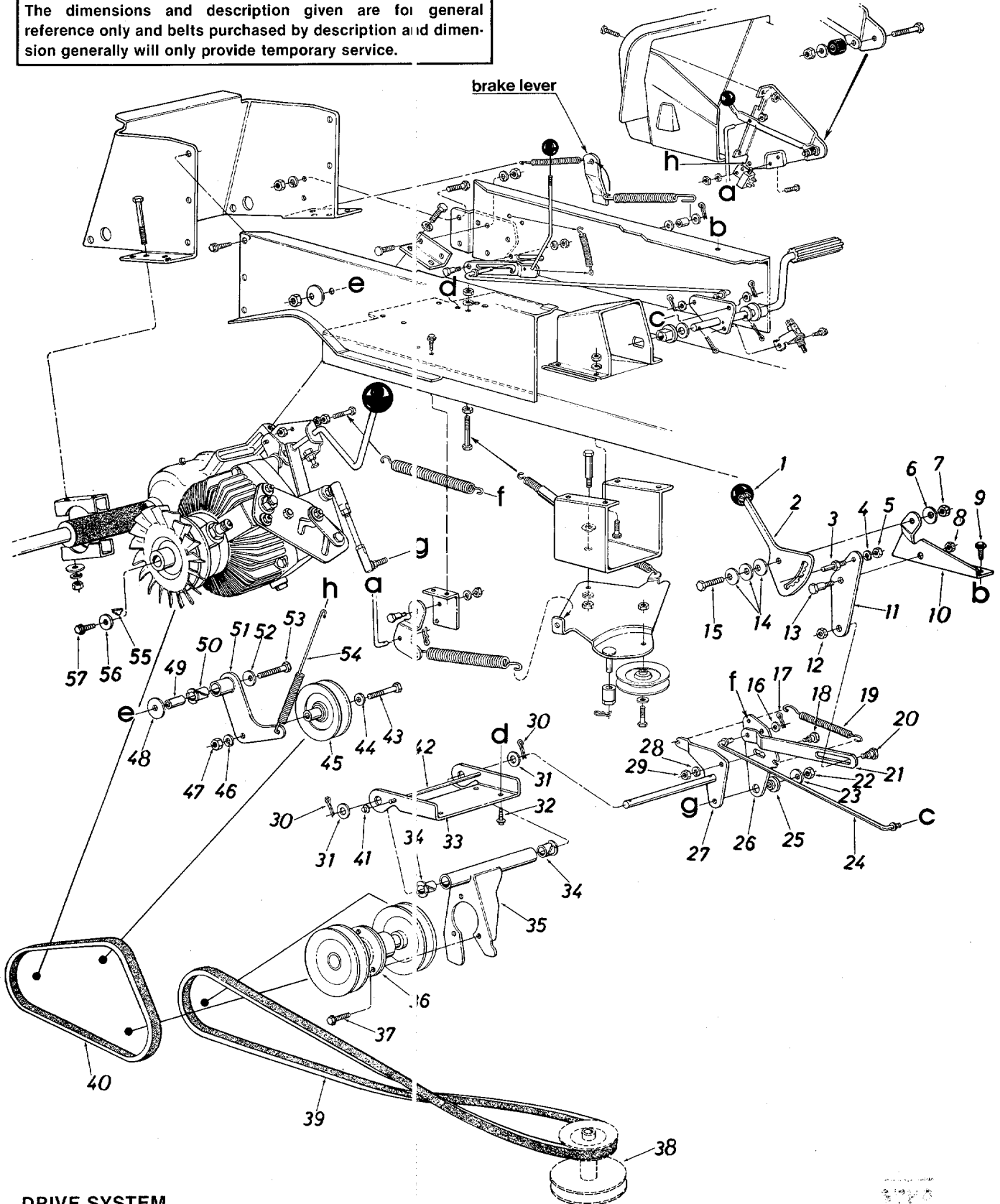
PARTS LIST FOR MODELS 842 AND 843 GARDEN TRACTORS

REF. NO.	PART NO.	COLOR CODE	DESCRIPTION	NEW PART	REF. NO.	PART NO.	COLOR CODE	DESCRIPTION	NEW PART
1	710-0286		Truss Mach. Scr. 1/4-20 x .50" Lg.		48	13887		Deck Control Pivot Brkt.	
2	720-0165		Knob—Blade Clutch		49	714-0104		Cotter Pin 5/16" Rod	
4	712-0271		Hex Sems Nut 1/4-20 Thd.		50	736-0119		L-Wash. 5/16" I.D.*	
5	712-0107		Hex Cent. L-Nut 1/4-20 Thd.		51	712-0267		Hex Nut 5/16-18 Thd.*	
6	736-0173		FI-Wash. 1/4" I.D. x .75" O.D.		52	712-0267		Hex Nut 5/16-18 Thd.*	
7	747-0513		PTO Lever	N	53	736-0119		L-Wash. 5/16" I.D.*	
8	13950		Deck Clutch Control Brkt.		54	731-0483		Convolved Conduit .50" I.D. x 4" Lg.	
9	710-0106		Hex Bolt 1/4-20 x .75" Lg.*		55	13833		Parking Brake Cam Mtg. Brkt.	
10	735-0126		Rubber Wash. .33" I.D. x .87" O.D.		56	738-0155		Shld. Bolt 7/16" Dia. x .16" Lg.	
11	726-0106		Push Cap 1/4" Rod		57	732-0384		Extension Spring	
12	747-0307		Deck Control Rod		58	712-0798		Hex Nut 3/8-16 Thd.*	
13	710-0473		Truss Mach. Scr. #10-24 x .50" Lg.*		59	736-0169		L-Wash. 3/8" I.D.*	
14	725-0465		Safety Switch (Deck)		60	736-0258		FI-Wash. .38" I.D. x 1.00"	
15	736-0147		Ext. L-Wash. #10 Scr.		61	13892		Rear Axle Brkt.	
16	712-0121		Hex Nut #10-24 Thd.*		62	712-0123		Hex Nut 5/16-24 Thd.*	
17	732-0475		Extension Spring .75" O.D. x 5.56" Lg.		63	710-0624		Hex Self-Tap Scr. 5/16-24 x 1.5"	
18	750-0497		Spacer .375" I.D. x .625" O.D. x .445" Lg.		64	16170		Parking Brake Cam	N
19	736-0267		FI-Wash. .385" I.D. x .87" O.D.		65	712-0287		Hex Nut 1/4-20 Thd.*	
20	13847		Side Panel Upper Frame—L.H.		66	736-0329		L-Wash. 1/4" I.D.*	
21	736-0267		FI-Wash. .385" I.D. x .87" O.D.		67	710-0599		Hex Wash. Hd. S-Tap Scr. 1/4-20 x .50" Lg.	
22	714-0507		Cotter Pin 3/32" Dia. x .75" Lg.*		68	16150		Side Panel Upper Frame—R.H.	N
23	735-0196		Foot Pad		69	712-0241		Hex Nut 3/8-24 Thd.*	
24	16164		Foot Pedal Brkt. Ass'y.	N	70	736-0105		Bell-Wash. .44" I.D. x .88" O.D.	
25	748-0209		Flange Brg. .630" I.D. x 1.25" O.D.		71	710-0316		Hex Bolt 3/8-16 x 3.50" Lg.*	
26	710-0599		Hex Wash. Hd. S-Tap Scr. 1/4-20 x .50" Lg.		72	13813		Hitch Plate	
27	725-0268		Safety Switch		73	712-0798		Hex Nut 3/8-16 Thd.*	
28	714-0115		Cotter Pin 1/8" Dia. x 1.00" Lg.		74	710-0152		Hex Bolt 3/8-24 x 1.00" Lg.*	
29	736-0187		FI-Wash. .640" I.D. x .24" O.D.		75	16152		Mounting Brkt. Transaxle	N
30	12850		Steering Gear Support Ass'y.		76	736-0169		L-Wash. 3/8" I.D.*	
31	712-0267		FI-Wash. .385" I.D. x .87" O.D.		77	710-0514		Hex Bolt 3/8-16 x 1.00" Lg. (Grade 5)	
32	736-0119		L-Wash. 5/16" I.D.*		78	16169		Reinforcement Plate—Frame	N
33	712-0287		Hex Nut 1/4-20 Thd.*		79	736-0169		L-Wash. 3/8" I.D.*	
34	710-0136		Hex Bolt 1/4-20 x 1.75" Lg.*		80	712-0241		Hex Nut 3/8-24 Thd.*	
35	732-0308		Extension Spring .50" O.D. x 6.37" Lg.		81	720-0166		Gear Shift Knob	
36	738-0155		Shld. Bolt 7/16" Dia. x .16" Lg.		82	747-0672		Parking Brake Link	
37	710-0376		Hex Bolt 5/16-18 x 1.00" Lg.*		83	732-0409		Extension Spring .38" O.D. x 3.18" Lg.	
38	13826		Idler Mtg. Brkt.—Deck		84	712-0798		Hex Nut 3/8-16 Thd.*	
39	712-0181		Hex L-Nut 3/8-16 Thd.		85	738-0147		Shld. Bolt .500" Dia. x .170	
41	756-0293		"V" Idler Pulley		86	732-0409		Extension Spring .38" O.D. x 3.18" Lg.	
42	736-0300		FI-Wash. 3/8" I.D.		87	747-0505		Rod—Brake .38" Dia. x 19.3" Lg.	N
43	710-0342		Hex Bolt 3/8-16 x 1.75" Lg.*		88	714-0507		Cotter Pin 3/32" Dia. x .75" Lg.	
44	714-0104		Cotter Pin 5/16" Rod		89	736-0267		FI-Wash. .385" I.D. x .87" O.D.	
45	748-0209		Spacer 748-0209		90	736-0141		Wave Wash.	
46	13893		Idler Brkt. Ass'y.		91	710-0726		Hex AB-Tap Scr. 5/16 x .75" Lg.	
47	732-0384		Extension Spring—Deck Control		92	712-0123		Hex Nut 5/16-24 Thd.*	
	0479				93	736-0119		L-Wash. 5/16" I.D.*	
					94	710-0157		Hex Bolt 5/16-24 x .75" Lg.*	
					95	736-0119		L-Wash. 5/16" I.D.*	

Models 842 and 843

IMPORTANT: Belts listed by Part Number are of special construction and should be used when replacement is necessary. The dimensions and description given are for general reference only and belts purchased by description and dimension generally will only provide temporary service.

For parts on top of this page refer to page 24.



DRIVE SYSTEM

Models 842 and 843

PARTS LIST FOR MODELS 842 AND 843 GARDEN TRACTORS

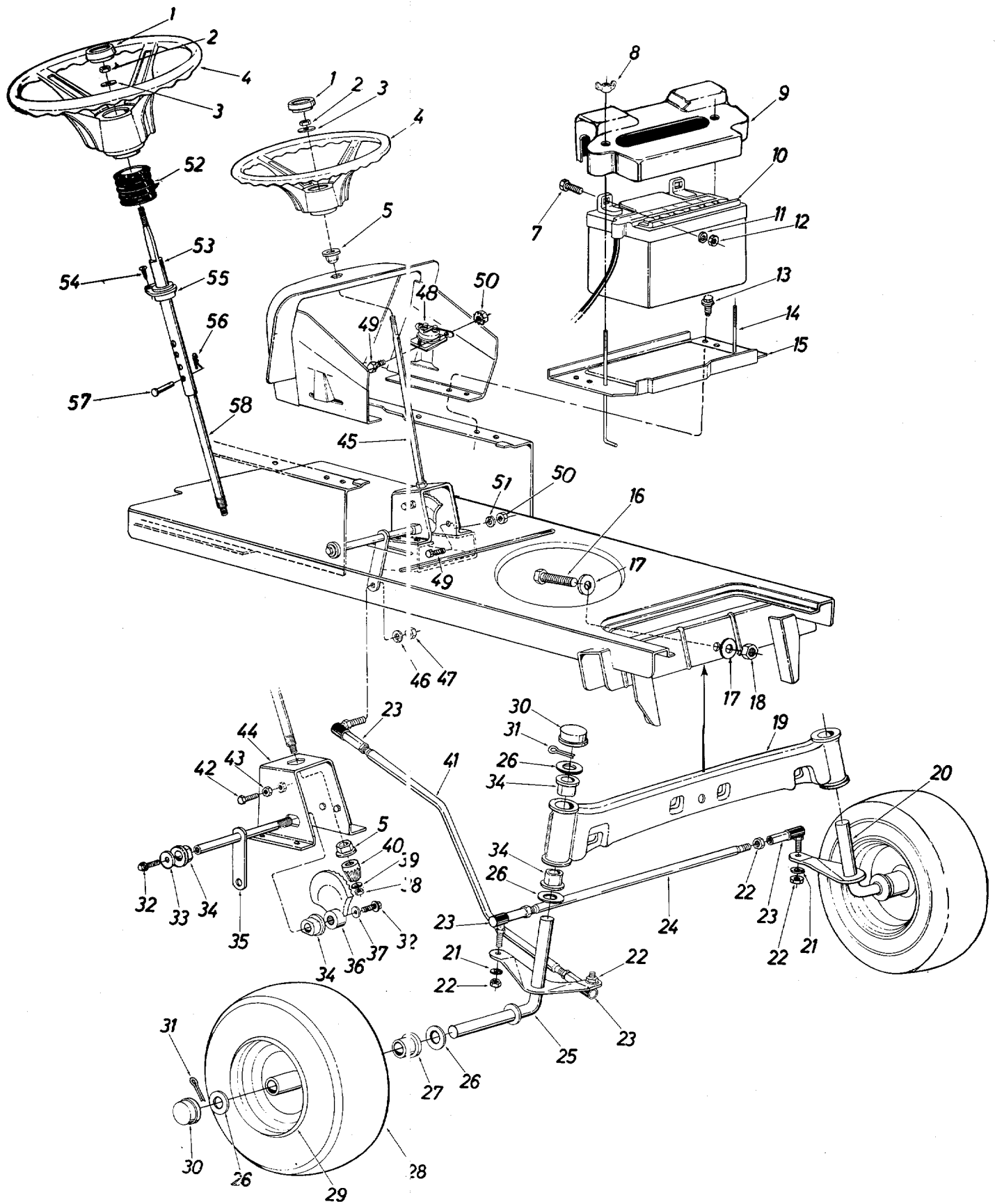
REF. NO.	PART NO.	COLOR CODE	DESCRIPTION	NEW PART	REF. NO.	PART NO.	COLOR CODE	DESCRIPTION	NEW PART
1	720-0165		Gear Shift Knob		31	726-0111		Push Cap	
2	16154		Speed Selector Cam	N	32	710-0599		Hex Wash S-Tap Scr. 1/4-20 x .50" Lg.	
3	711-0778		Hex Stud .250" Dia. x .62"		33	13822		Idler Mtg. Brkt.	
4	736-0329		L-Wash. 1/4" I.D.*		34	741-0295		Flanged Nyliner Brg. .376 I.D. x .437	
5	712-0287		Hex Nut 1/4-20 Thd.*		35	16174		Mounting Brkt. Ass'y.	N
6	736-0219		Bell-Wash. .400" I.D. x 1.13" O.D.		36	756-0324		Jack Shaft Ass'y.	
7	712-0116		Hex Ins. L-Nut 3/8-24 Thd.		37	710-0198		Hex Sems Bolt 5/16-18 x .75" Lg.*	
8	712-0181		Hex Top L-Nut 3/8-16 Thd.		38	756-0328		Engine Pulley 47.5" I.D. x 5.56" O.D.	
9	710-0642		Hex Wash. Hd. S-Tap Scr. 1/4-20 x .75" Lg.		39	754-0245		"V"-Belt 1/2" x 59.0" Lg.	
10	16155		Speed Selector Mtg. Brkt.	N	40	754-0177		"V"-Belt 1/2" x 32.0" Lg.	
11	16156		Speed Selector Transfer Brkt.	N	41	726-0111		Push Cap	
12	712-0267		Hex Nut 5/16-18 Thd.*		42	747-0655		Rod—3/16" Dia. x 7.12" Lg.	N
13	738-0147		Shld. Bolt .500" Dia. x .170		43	710-0459		Hex Bolt 3/8-24 x 1.50" Lg.*	
14	736-0331		Bell-Wash. .39" I.D. x 1.13" O.D.		44	736-0267		Fl-Wash. .385" I.D. x .87" O.D.	
15	710-0152		Hex Bolt 3/8-24 x 1.00" Lg.*		45	756-0293		Idler Pulley 4.0" O.D. x 5/8"-V"	
16	736-0267		Fl-Wash. .385" I.D. x .87" O.D.		46	736-0169		L-Wash. 3/8" I.D.*	
17	714-0507		Cotter Pin 3/32" Dia. x .75" Lg.*		47	712-0241		Hex Nut 3/8-24 Thd.*	
18	738-0140		Shld. Bolt .437" Dia. x .180		48	736-0227		Fl-Wash. .930" I.D. x 1.50" O.D.	
19	732-0433		Extension Spring .50" Dia. x 2.75" Lg.		49	748-0303		Spacer .38" I.D. x .62" O.D. x 1.87" Lg.	N
20	738-0140		Shld. Bolt .437" Dia. x .180		50	741-0257		Flanged Nyliner Brg.	
21	16166		Speed Selector Link (843)	N	51	16171		Idler Pivot Brkt. Ass'y.	N
	16167		Speed Selector Link (842)	N	52	736-0105		Bell-Wash. .440" I.D. x .88" O.D.	
22	712-0241		Hex Nut 3/8-24 Thd.*		53	710-0151		Hex Bolt 3/8-24 x 2.00" Lg.*	
23	736-0169		L-Wash. 3/8" I.D.*		54	732-0185		Extension Spring .56" O.D. x 7.75" Lg.	
24	747-0504		Rod—Speed Control .312" Dia.		55	714-0126		#9 Hi-Pro Key .316" X .75" Dia.	
25	738-0347		Shld. Spacer .625" I.D.		56	736-0270		Bell-Wash. .265" I.D. x .75" O.D.	
26	16163		Speed Cont. Transfer Swivel Brkt.	N	57	710-0599		Hex Wash. Hd. S-Tap Scr. 1/4-20 x .50" Lg.	
27	16161		Speed Control Transfer Ass'y.	N					
28	736-0119		L-Wash. 5/16" I.D.*						
29	712-0267		Hex Nut 5/16-18 Thd.*						
30	714-0115		Cotter Pin 1/8" Dia. x 1.00" Lg.*						

(462—Red Flake)

*For faster service obtain standard nuts, bolts and washers locally. If these items cannot be obtained locally, order by part number and size shown on parts list.

When ordering parts if color or finish is important, use the appropriate color code shown. (e.g. Red Flake Finish—12369 (462).)

Models 842 and 843



STEERING

Models 842 and 843

PARTS LIST FOR STEERING MODELS 842 AND 843

REF. NO.	PART NO.	COLOR CODE	DESCRIPTION	NEW PART	REF. NO.	PART NO.	COLOR CODE	DESCRIPTION	NEW PART
1	731-0220		Steering Wheel Cap		32	710-0180		Hex Scr. 3/8-24 x .75" Lg. Grade 5	
2	712-0158		Hex Cent. L-Nut 5/16-18 Thd.		33	736-0133		Fl-Wash. 3/8 I.D. x 1.25 O.D. x .090	
3	736-0242		Bell-Wash. 5/16" I.D. x .87" O.D. x .060		34	741-0199		Flange Double "D" Brg. .753 I.D.	
4	731-0356		Steering Wheel		35	12749		Steering Arm Shaft Ass'y.	
5	741-0225		Plastic Hex Bearing 5/8" I.D. (842)		36	748-0236		Side Gear—Steering	
7	710-0258		Hex Scr. 1/4-20 x .62" Lg.		37	736-0105		Bell-Wash. 3/8" I.D.	
8	712-0113		Wing Nut Plastic 1/4-20 Thd.		38	712-0237		Hex Cent. L-Nut 5/16-24 Thd.	
9	731-0707		Battery Cover		39	736-0264		Fl-Wash. 5/16" I.D. x .62 O.D. x .059	
10	725-0453		12-V Battery		40	748-0237		Pinion Gear—Steering	
11	736-0329		L-Wash. 1/4" Scr.*		41	747-0302		Drag Link	
12	712-0287		Hex Nut 1/4-20 Thd.*		42	710-0670		Hex Nylon Scr. 3/8-16 x 1.25" Lg.	
13	710-0599		Hex Thd. Rolling Scr. 1/4-20 x .50" Lg.		43	712-0798		Hex Nut 3/8-16 Thd.*	
14	711-0222		Battery Hold Down Rod		44	12850		Steering Gear Sup. Ass'y.	
15	13379		Battery Plate		45	738-0317		Steering Shaft (843)	
16	710-0533		Hex Scr. 5/8-18 x 2.50" Lg.*		46	736-0169		L-Wash. 3/8" Scr.*	
17	736-0282		Flat Wash. .66" I.D. x 2.25" O.D. x .17		47	712-0241		Hex Nut 3/8-24 Thd.*	
18	712-0923		Hex Cent. L-Nut 5/8-18 Thd.		48	725-0771		Solenoid	
19	13865		Front Pivot Bar Ass'y.		49	710-0289		Hex Bolt 1/4-20 x .50" Lg.*	
20	13839		Front Axle Ass'y.—L.H.		50	712-0271		Hex Sems Nut 1/4-20 Thd.	
21	736-0169		L-Wash. 3/8" Scr.*		52	731-0559		Steering Bellow (843)	
22	712-0711		Hex Jam Nut 3/8-24 Thd.		53	14775		Upper Steering Shaft (843)	
23	723-0156		Ball Joint Ass'y.		54	710-0837		Oval Hd. Cr.-Sunk Scr. #10 x 5/8" Lg. (843)	
24	747-0301		Tie Rod		55	741-0356		Fl-Bearing .89" I.D. x 1.36" O.D. (843)	
25	13838		Front Axle Ass'y.—R.H.		56	714-0147		Hairpin Cotter (843)	
26	736-0316		Fl-Wash. .780 I.D. x 1.59 O.D.		57	711-0684		Clevis Pin (843)	
27	**		Flange Bearing		58	738-0588		Lower Steering Shaft (843)	
28	**		Front Wheel Ass'y. Comp.						
29	**		Front Wheel Rim Only						
30	731-0484		Dust Cover						
31	714-0121		Cotter Pin 5/32" Dia. x 1.00" Lg.*						

(462—Red Flake)

*For faster service obtain standard nuts, bolts and washers locally. If these items cannot be obtained locally, order by part number and size shown on parts list.

When ordering parts if color or finish is important, use the appropriate color code shown. (e.g. Red Flake Finish—12369 (462).)

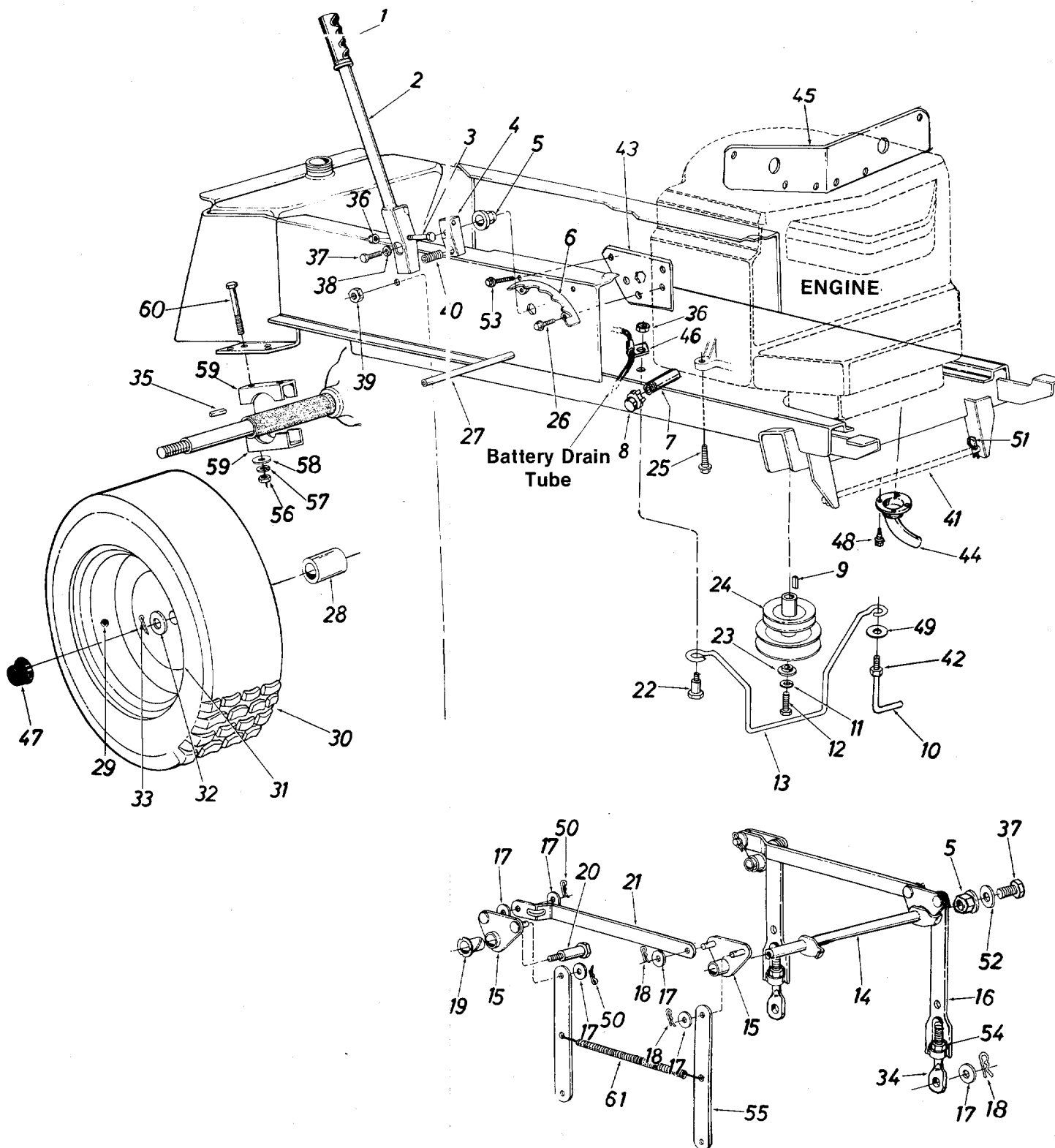
The engine is not under warranty by the mower manufacturer. If repairs or service is needed on the engine, please contact your nearest authorized engine service outlet. Check the "Yellow Pages" of your telephone book under "Engines—Gasoline."



**FRONT WHEEL CHART

Description	16 x 6.50—Part No. Rib Tread	16 x 6.50—Part No. Turf Tread
Wheel Assembly Comp.	734-1006	734-1223
Tire Only	734-0526	734-0275
Rim Only	734-0787	734-0787
Bearing	741-0312	741-0312
Air Valve	734-0255	734-0255
Grease Fitting	737-0146	734-0146

Models 842 and 843



DECK LINKAGE

Models 842 and 843

PARTS LIST FOR DECK LINKAGE MODELS 842 AND 843

REF. NO.	PART NO.	COLOR CODE	DESCRIPTION	NEW PART	REF. NO.	PART NO.	COLOR CODE	DESCRIPTION	NEW PART
1	720-0157		Grip		30	**		Rear Wheel Ass'y. Comp.	
2	14233		Lift Handle Ass'y.		31	**		Rear Wheel Rim Only	
3	710-0442		Hex Scr. 5/16-18 x 1.50" Lg.*		32	736-0345		Flat Washer	
4	748-0274		Lift Shaft Drive		33	714-0142		Cotter Pin 3/16" Dia. x 1.50" Lg.	
5	741-0225		Plastic Hex Brg. 5/8" I.D.		34	711-0773		Eye Bolt Adj. Link 1/2-13 Thd.	
6	14231		Index Brkt. Deck Lift		35	714-0120		Sq. Key 1/4 x 3.0"	
7	737-0164		Pipe Nipple 3/8-18 Npt.		36	712-0158		Hex Cent. L-Nut 5/16-18 Thd.	
8	737-0143		Pipe Cap 3/8-18 Npt.		37	710-0237		Hex Scr. 5/16-24 x .62" Lg.*	
9	714-0118		Sq. Key 1/4" x 1/4" x 1.50" Lg.		38	736-0119		L-Wash. 5/16" Scr.*	
10	747-0216		Belt Guard Lock Pin		39	712-0181		Hex Top L-Nut 3/8-16 Thd.	
11	736-0171		L-Wash. 7/16" Scr.*		40	732-0369		Compression Spring	
12	710-0757		Hex Scr. 7/16-20 x 1.50" Lg.		41	738-0392		Deck Connecting Rod	
13	747-0299		Belt Guard		42	712-0123		Hex Nut 5/16-24 Thd.*	
14	13889		Lift Shaft Ass'y.		43	14170		Index Brkt. Reinforcement Plate	
15	13895		Lift Pivot Brkt. Ass'y.		44	751-0275		Exhaust Pipe	
16	16092		Adj. Deck Lift Link		45	14282		Heat Shield	
17	736-0192		FI-Wash. 1/2" I.D. x 1.00" O.D. x .090		46	726-0175		Mounting Clamp	
18	714-0101		Hairpin Cotter		47	731-0556		Hub Cap	
19	741-0295		Nyliner 5/8" I.D. x .88" Lg.		48	710-0224		Hex Wash. Hd. AB-Tap Scr. #10 x .50" Lg.	
20	738-0445		Shld. Scr. 5/8" Dia. x .96" Lg. 3/8-16		49	736-0242		Belle-Wash. .39" I.D.	
21	13790		Connecting Link		50	714-0111		Cotter Pin .09 Dia. x 1.0" Lg.	
22	738-0296		Shld. Scr. .437 Dia. x .268 Lg. 5/16-18		51	714-0149		Int. Cotter Pin	
23	736-0322		Flat Wash. .44" I.D. x 1.25" O.D. x .17		52	736-0231		Flat Wash. .34" I.D. x 1.12" O.D. x .125	
24	756-0328		Two-Step Engine Pulley 4.75" & 5.56		53	710-0726		Hex Wash. Hd. AB-Tap Scr. 5/16 x .62" Lg.	
25	710-0502		Hex Wash. Hd. Scr. 3/8-16 x 1.25" Lg.		54	712-0206		Hex Nut 1/2-13 Thd.	
26	710-0600		Hex Thd. Rolling Scr. 5/16-24 x .50" Lg.		55	14399		Deck Link	
27	738-0435		Running Board Rod		56	712-0798		Hex Nut 3/8-16 Thd.*	
28	750-0490		Spacer 1.0" I.D. x 1.25" O.D. x 2.12" Lg.		57	736-0119		L-Wash. 3/8" I.D.*	
29	734-0255		Air Valve		58	736-0258		FI-Wash. .390" I.D. x 1.00" O.D.	
					59	13892		Rear Axle Bracket	
					60	710-0644		Hex Bolt 3/8-16 x 3.25" Lg.	
					61	732-0487		Extension Spring 8.25" Lg.	

The engine is not under warranty by the mower manufacturer. If repairs or service is needed on the engine, please contact your nearest authorized engine service outlet. Check the "Yellow Pages" of your telephone book under "Engines—Gasoline."

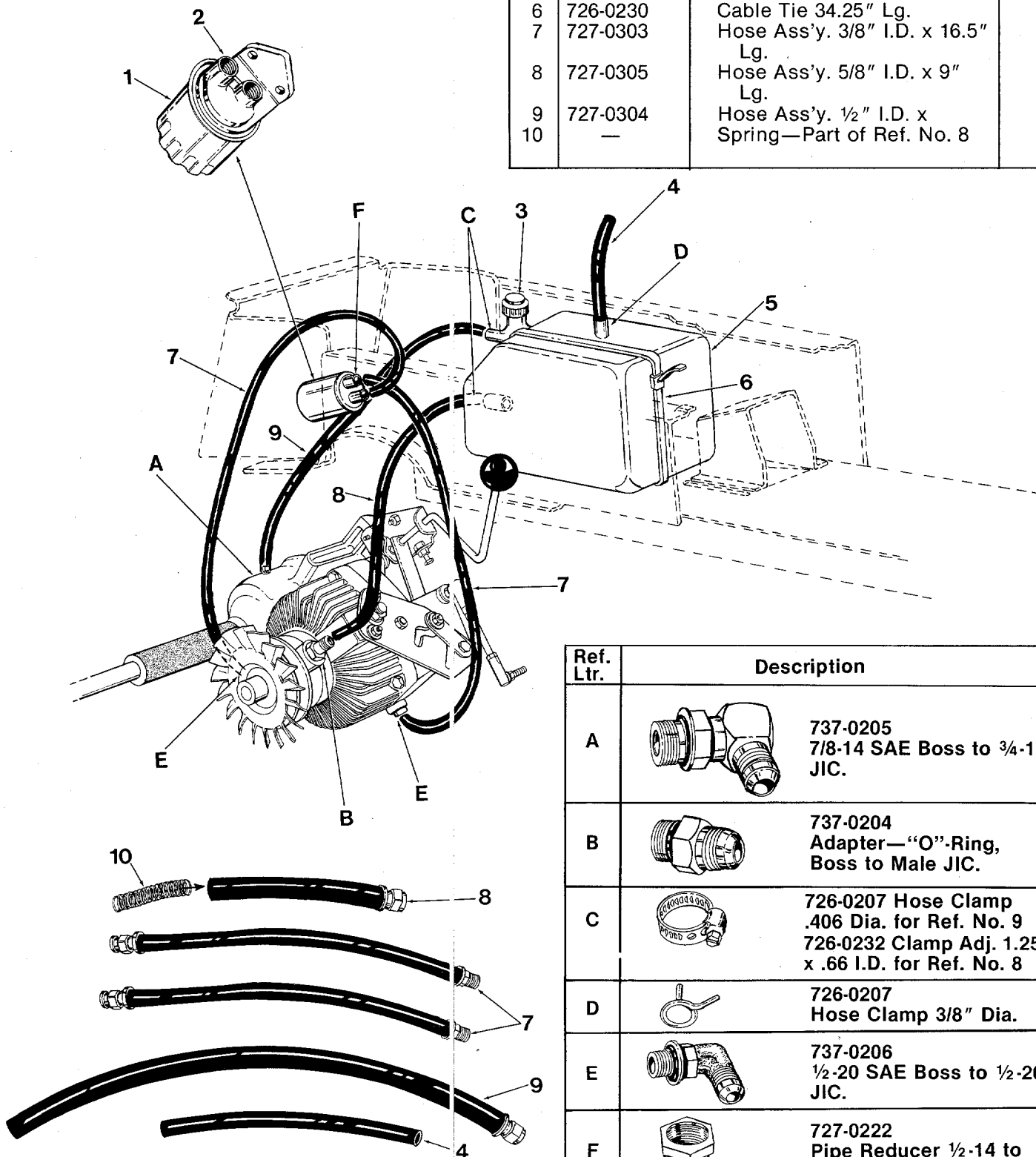


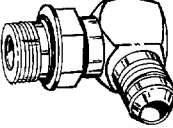
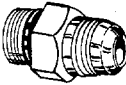



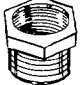
**REAR WHEEL CHART

Description	23 x 9.50—Part No.
Wheel Assembly Comp.	734-1005
Tire Only	734-0322
Rim Only	734-1015

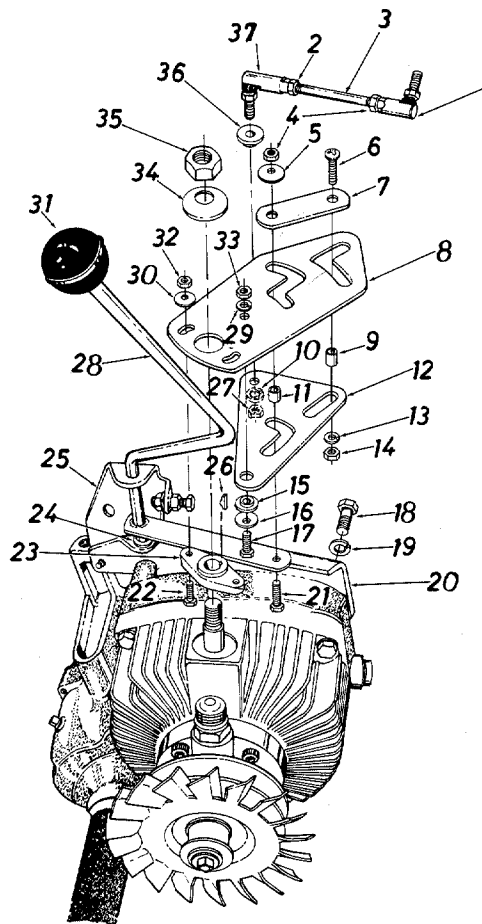
Models 842 and 843

REF. NO.	PART NO.	DESCRIPTION	NEW PART
1	727-0162	Oil Filter	
2	727-0163	Filter Base	
3	737-0203	Oil Reservoir Cap	N
4	751-0173	Gas Line—10" Lg.	
5	737-0202	Oil Reservoir	N
6	726-0230	Cable Tie 34.25" Lg.	
7	727-0303	Hose Ass'y. 3/8" I.D. x 16.5" Lg.	
8	727-0305	Hose Ass'y. 5/8" I.D. x 9" Lg.	
9	727-0304	Hose Ass'y. 1/2" I.D. x	
10	—	Spring—Part of Ref. No. 8	



Ref. Ltr.	Description
A	 737-0205 7/8-14 SAE Boss to 3/4-16 JIC.
B	 737-0204 Adapter—"O"-Ring, Boss to Male JIC.
C	 726-0207 Hose Clamp .406 Dia. for Ref. No. 9 726-0232 Clamp Adj. 1.25 x .66 I.D. for Ref. No. 8
D	 726-0207 Hose Clamp 3/8" Dia.
E	 737-0206 1/2-20 SAE Boss to 1/2-20 JIC.
F	 727-0222 Pipe Reducer 1/2-14 to 3/8-18 NPT

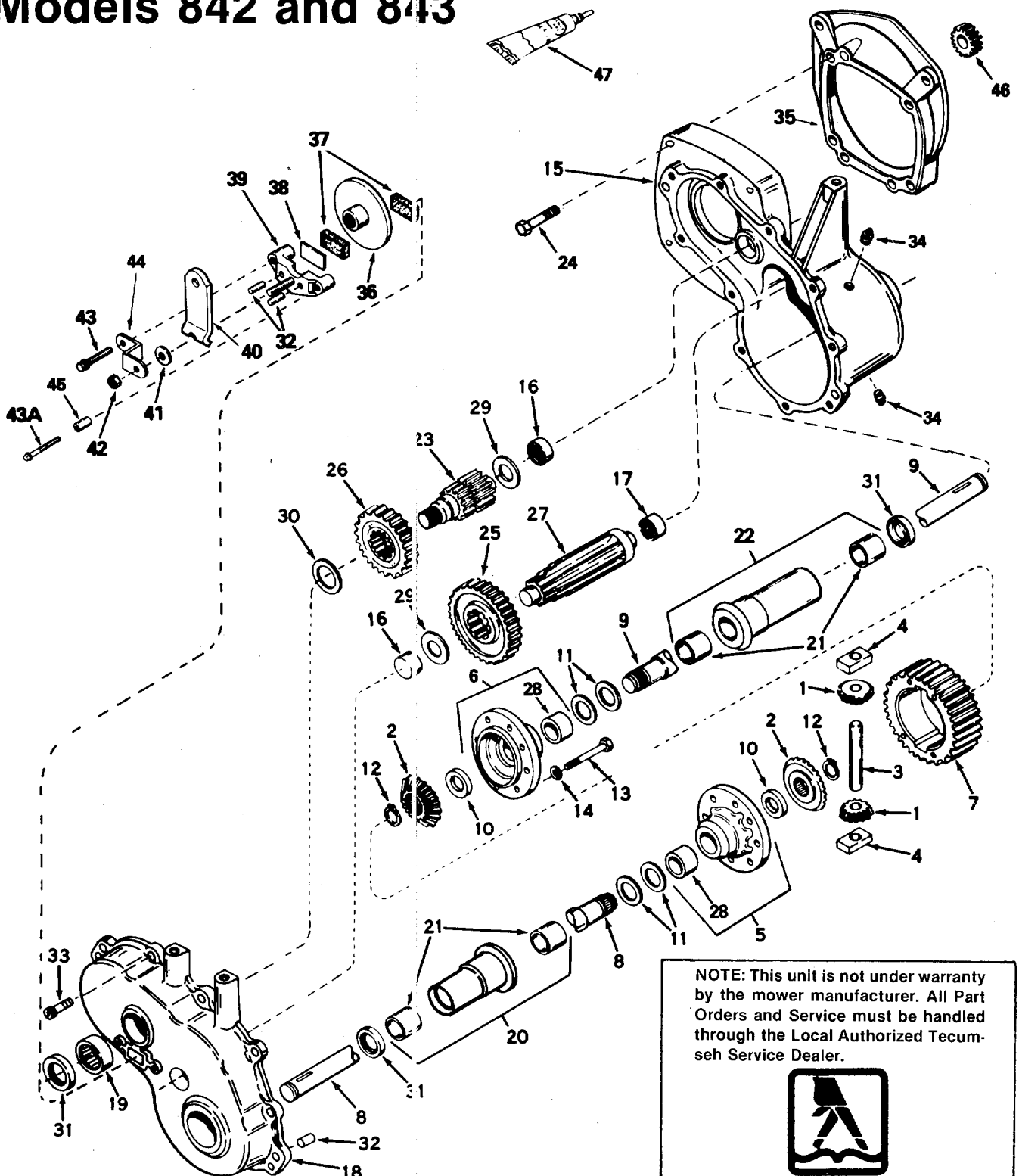
Models 842 and 843



**PARTS LIST FOR MODELS 842 AND 843
GARDEN TRACTORS**

REF. NO.	PART NO.	DESCRIPTION	NEW PART	REF. NO.	PART NO.	DESCRIPTION	NEW PART
1	723-0156	Ball Joint Ass'y. 3/8-24 Thd.		18	710-0514	Hex Bolt 3/8-16 x 1.0" Lg. (Grade 5)	
2	712-0312	Hex Nut 3/8-24 Thd. (L.H. Threads)		19	736-0169	L-Wash. 3/8" I.D.*	
3	747-0508	Control Rod 3/8-24 x 3.75" Lg.		20	16151	Shift Lever Bracket	N
4	712-0241	Hex Nut 3/8-24 Thd.*		21	710-0191	Hex Bolt 3/8-24 x 1.25" Lg.*	
5	736-0331	Bell-Wash. .39" I.D. x 1.13" O.D.		22	710-0412	Hex Bolt 1/4-28 x .75" Lg.*	
6	1511 -047	Truss Mach. Scr. Phil. 5/16-18 x 1.00" Lg.		23	748-0302	Pintle Hub	N
7	16157	Locking Link	N	24	741-0407	Nyliner .375" Dia. x .140	
8	16159	Pintle Main Control Plate	N	25	16153	Shift Lever Bracket—Upper	N
9	750-0630	Spacer .377" I.D. x .500" O.D. x .830" Lg.		26	714-0131	#5 Hi-Pro Key 1/8 x 5/8 Dia.	
10	736-0169	L-Wash. 3/8" I.D.*		27	712-0241	Hex Nut 3/8-24 Thd.*	
11	748-0304	Spacer .315" I.D. x .500" O.D. x .350		28	16225	Shift Lever Ass'y.	N
12	16160	Pintle Drive Plate	N	29	736-0169	L-Wash. 3/8" I.D.*	
13	736-0119	L-Wash. 5/16" I.D.*		30	736-0270	Bell-Wash. .265" I.D. x .75" O.D.	
14	712-0267	Hex Nut 5/16-18 Thd.*		31	720-0175	Gear Shift Knob	
15	738-0347	Shld. Spacer .625" I.D.		32	712-0138	Hex Nut 1/4-28 Thd.	
16	736-0331	Bell-Wash. .39" I.D. x 1.13" O.D.		33	712-0241	Hex Nut 3/8-24 Thd.*	
17	710-0152	Hex Bolt 3/8-24 x 1.00" Lg.*		34	736-0253	Bell-Wash. .505" I.D. x 1.00" O.D.	
				35	712-0206	Hex Nut 1/2-13 Thd.*	
				36	738-0347	Shld. Spacer .625" I.D.	
				37	723-0351	Ball Joint Ass'y. 3/8-24 L.H. Thd.	

Models 842 and 843



NOTE: This unit is not under warranty by the mower manufacturer. All Part Orders and Service must be handled through the Local Authorized Tecumseh Service Dealer.



PEERLESS MODEL 1310-002

This unit is under warranty by Tecumseh Products Company. Parts and Service are available through all Tecumseh, Lauson Power Products Service Dealers. Check the "Yellow Pages" of your telephone directory under "Engines—Gasoline."

TRANSAXLE MODEL 1310-002

Models 842 and 843

PARTS LIST FOR TRANSAXLE MODEL 1310-002

REF. NO.	PART NO.	COLOR CODE	DESCRIPTION	NEW PART	REF. NO.	PART NO.	COLOR CODE	DESCRIPTION	NEW PART
1	PE-778094		Pinion, Bevel		24	PE-792120		Screw, Hex Hd., 3/8-16 x 2	
2	PE-778095		Gear, Bevel		25	PE-778036		Gear, Output	
3	PE-786019		Pin, Drive		26	PE-778195		Gear, Idler	
4	PE-786027		Block, Drive		27	PE-776244		Shaft, Output	
5	PE-774609		Carrier Ass'y., Differential (Incl. No. 28)		28	PE-780144		Bushing	
6	PE-774610		Carrier Ass'y., Differential (Incl. No. 28)		29	PE-780001		Washer	
7	PE-778033A		Gear, Ring		30	PE-780090		Washer	
8	PE-774611		Axle (13-1/16" Long)		31	PE-788008		Seal, Oil	
9	PE-774612		Axle (19-1/8" Long)		32	PE-786026		Pin, Dowel	
10	PE-780107		Washer		33	PE-792046		Screw, Hex Washer Hd. Thread Forming, 1/4-20 x 1	
11	PE-780042		Washer, Thrust		34	PE-792010		Plug, Pipe	
12	PE-792018		Ring, Snap		35	PE-786112		Plate, Adapter	
13	PE-792005		Screw, Hex Hd., 1/4-20 x 2 1/4		36	PE-790027		Disc, Brake	
14	PE-792006		Lock Washer, 1/4"		37	PE-790006		Pad, Brake	
15	PE-770081		Case Ass'y. (Incl. Nos. 16 & 17)		38	PE-790007		Plate, Brake Pad	
16	PE-780013		Bearing, Needle		39	PE-790025		Holder, Brake Pad	
17	PE-780088		Bearing, Needle		40	PE-790010		Lever, Brake	
18	PE-772085		Cover Ass'y. (Incl. Nos. 16 & 19)		41	PE-792076		Washer, Flat	
19	PE-780089		Bearing, Needle		42	PE-792075		Lock Nut, 5/16-24	
20	PE-782041A		Housing & Bushing Ass'y. (6-5/8" Long) (Incl. 2 of No. 21)	43A	43	PE-792073		Screw, Flanged Hex Hd. Thread Forming, 1/4-20 x 1 1/4	
21	PE-780054		Bushing	44		PE-786086		Screw, Flanged Hex Hd. Thread Forming, 1/4-20 x 2 1/4	
22	PE-782067		Housing & Bushing Ass'y. (12-45/64" Long) (Incl. 2 of No. 21)	45		PE-786066		Bracket	
				46		PE-778196		Spacer	
23	PE-776245		Shaft, Brake	47		PE-510334		Gear, Spur (18 Teeth)	
								Gasket Eliminator	

NOTE: This unit is not under warranty by the mower manufacturer. All Part Orders and Service must be handled through the Local Authorized Tecumseh Service Dealer.



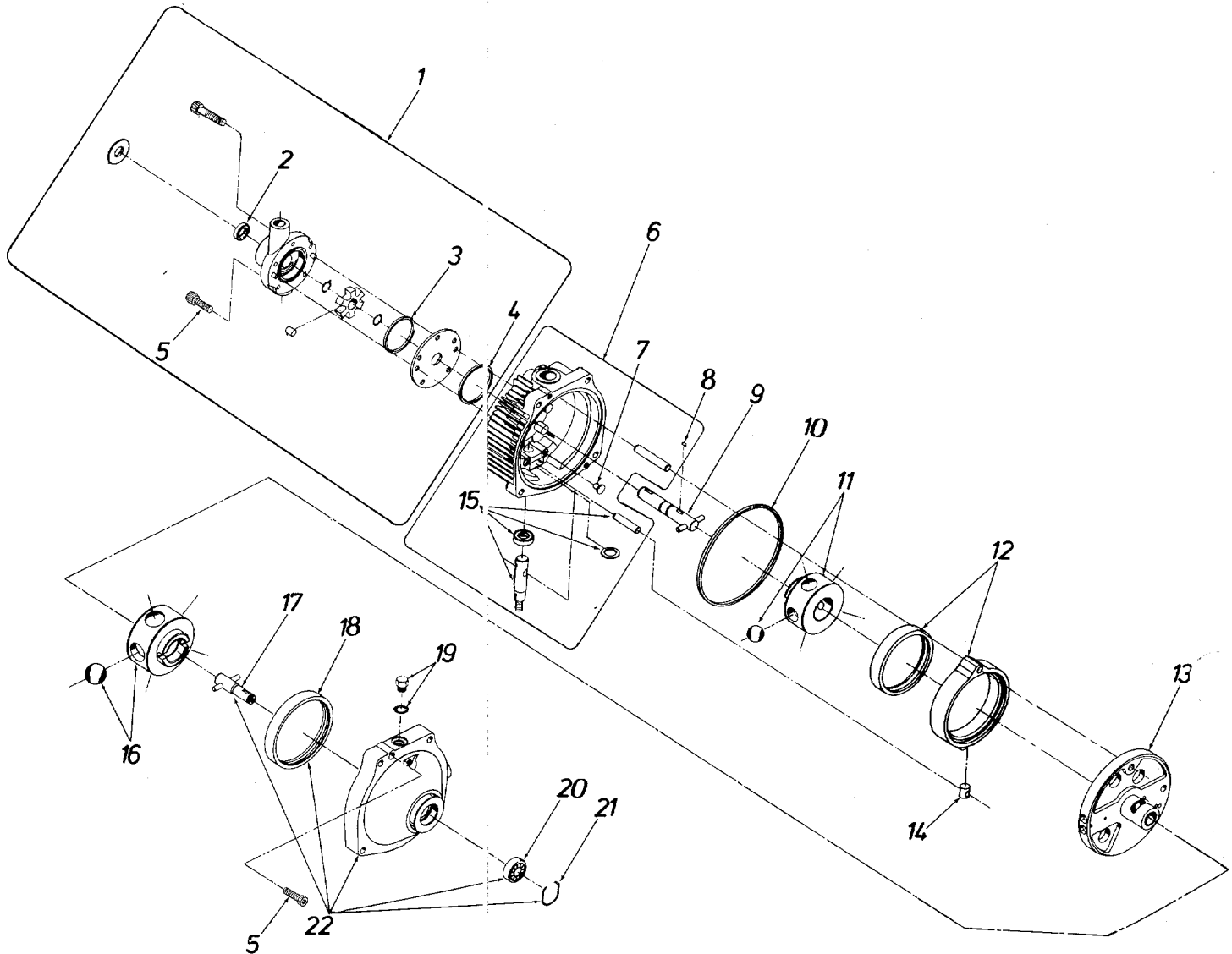
yellow pages

PEERLESS MODEL 1310-002

This unit is under warranty by Tecumseh Products Company. Parts and Service are available through all Tecumseh, Lauson Power Products Service Dealers. Check the "Yellow Pages" of your telephone directory under "Engines—Gasoline."

Models 842 and 843

M11 HYDROSTATIC TRANSMISSION

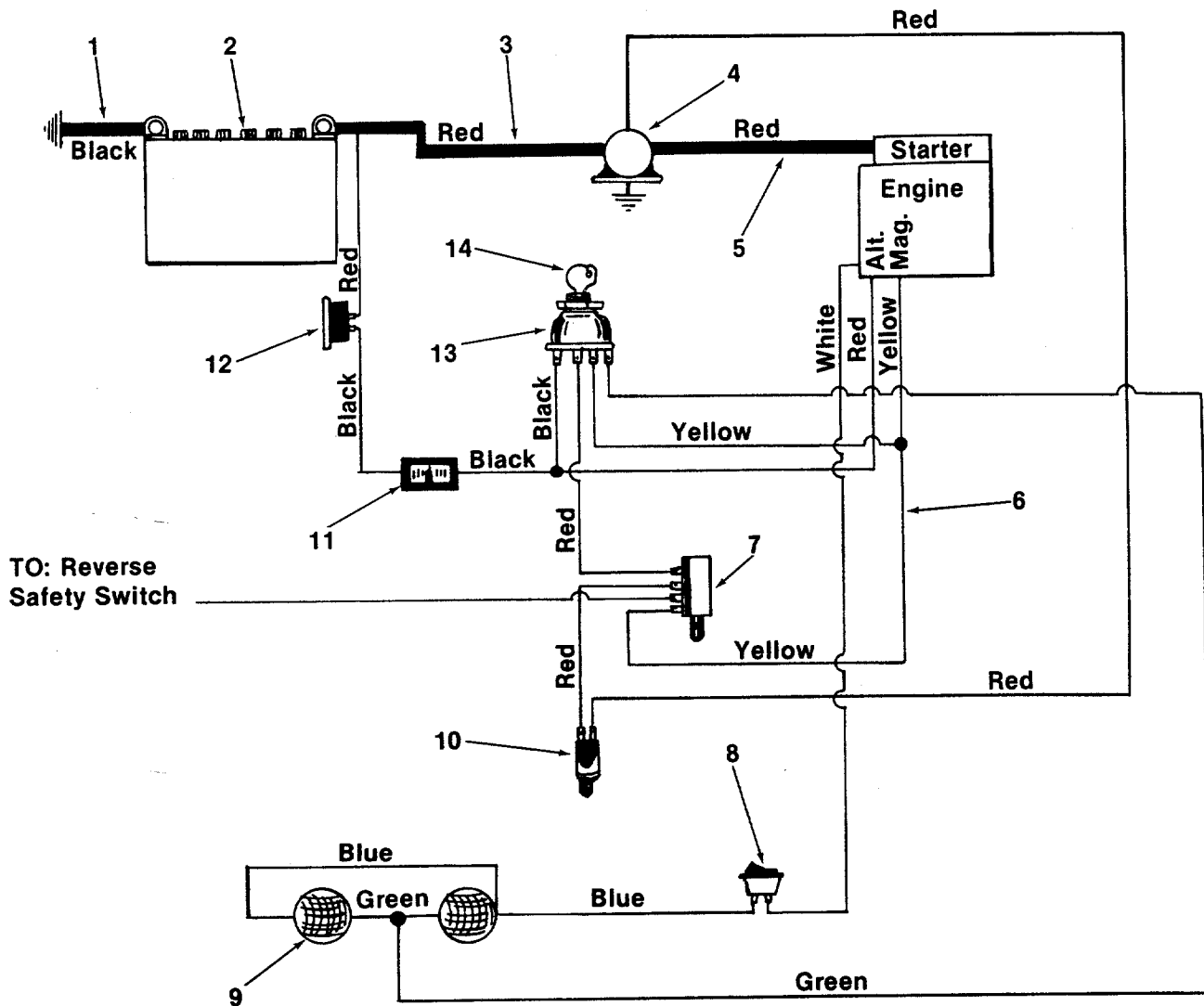


PARTS LIST FOR M11 HYDROSTATIC TRANSMISSION ET001100-006 (717-0344)

REF. NO.	PART NO.	DESCRIPTION	REF. NO.	PART NO.	DESCRIPTION
1	ET-990045-000	Charge Pump Kit	12	ET-101904-000	Cam Ring Subassembly
2	ET-092999-000	Oil Seal	13	ET-101571-000	Pintle Subassembly
3	ET-008771-036	Square Cut Seal Ring .036	14	ET-097841-000	Cam Ring Insert
4	ET-008771-038	Square Cut Seal Ring .038	15	ET-990136-000	Control Shaft Kit
5	ET-095912-125	Socket Head Cap Screw 5/16-18 x 1.25" Long	16	ET-101853-000	Motor Rotor—Ball Sub-assembly
6	ET-990114-000	Cover Subassembly	17	ET-024608-000	Output Shaft Subassembly
7	ET-101597-000	Button	18	ET-040525-000	Motor Race
8	ET-090880-000	Drive Pin	19	ET-025090-006	"O"-Ring Plug Subassembly
9	ET-024129-000	Input Shaft Subassembly	20	ET-097879-000	Ball Bearing (Output)
10	ET-008771-166	Square Cut Seal Ring .166	21	ET-091231-000	Retaining Ring
11	ET-101470-000	Pump Rotor—Ball Sub-assembly	22	ET-102583-000	Body Subassembly

NOTE: A complete disassembly procedure and repair manual for the hydrostatic pump is available from the factory. Write for manual covering Model 717-0344, Form No. 770-5350.

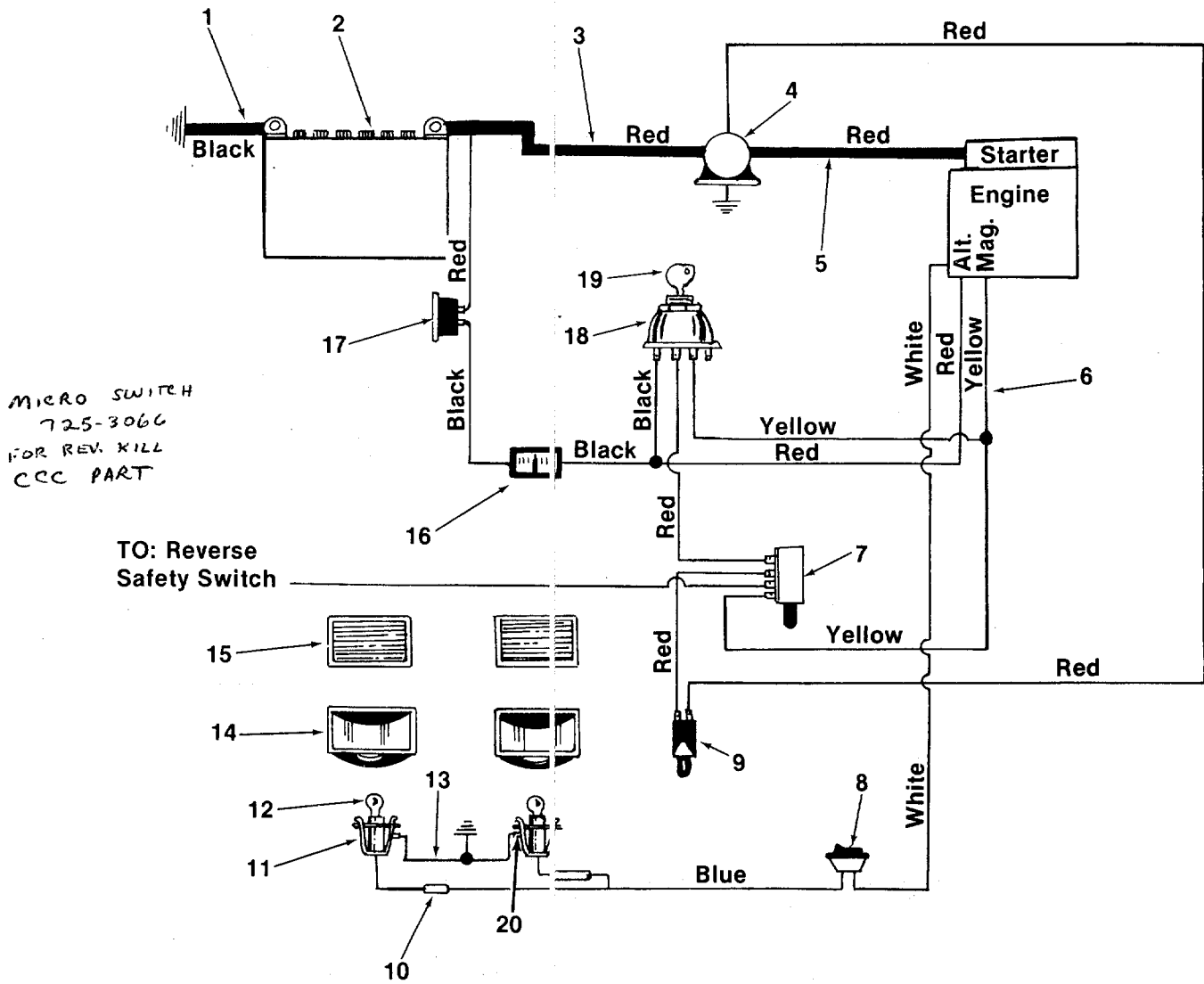
Model 842



PARTS LIST FOR ELECTRICAL SYSTEM MODEL 842

REF. NO.	PART NO.	DESCRIPTION
1	725-0996	Electric Ground Wire (Black Negative)
2	725-0453	12V-Battery
3	725-0563	Electric Wire (Red Positive)
4	725-0771	Solenoid
5	725-0561	Electric Wire
6	725-1021	Wire Harness
7	725-0465	Safety Switch (P.T.O.)
8	725-0634	Light Switch
9	725-0222	Head Lights
10	725-0268	Safety Switch (Clutch)
11	725-0925	Ammeter
12	725-0459	Circuit Breaker
13	725-0267	Ignition Switch
14	725-0201	Ignition Key

Model 843



PARTS LIST FOR ELECTRICAL SYSTEM MODEL 843

REF. NO.	PART NO.	DESCRIPTION	REF. NO.	DESCRIPTION	
1	725-0996	Electric Wire (Black Negative)	11	725-1058	Socket
2	725-0453	12V-Battery	12	725-0963	Lamp
3	725-0563	Electric Wire (Red Positive)	13	725-0916	Ground Wire
4	725-0771	Solenoid	14	731-0705	Head Light Housing
5	725-0561	Electric Wire	15	731-0706	Lens
6	725-1027	Wire Harness	16	725-0925	Ammeter
7	725-0465	Safety Switch (P.T.O.)	17	725-0459	Circuit Breaker
8	725-0634	Light Switch	18	725-0267	Ignition Switch
9	725-0268	Safety Switch (Clutch)	19	725-0201	Ignition Key
10	725-0717	Tab Receptacle	20	726-0226	Push On Ground Clip

PARTS INFORMATION

POWER EQUIPMENT PARTS AND SERVICE

Parts and service are available through the authorized service firms listed below. All orders should specify the model number of your unit, part numbers, description of parts and the quantity of each part required.

NOTE: If any parts are found to be missing or defective upon assembly of this unit, write to advise the factory so that immediate replacement can be made.

ALABAMA	BIRMINGHAM	
Auto Electric & Carburetor Co.	2625 4th Ave. S.	35233
ARKANSAS	NORTH LITTLE ROCK	
Sutton's Lawn Mower Shop	5301 Roundtop Drive Box 368, Rt. 4	72117
CALIFORNIA	PORTERVILLE	
Billious	75 North D Street	93257
COLORADO	DENVER	
Spitzer Industrial Products Co.	6601 N. Washington St.	80229
FLORIDA	JACKSONVILLE	
Radco Distributors	4909 Victor St. Box 5459	32207
	HIALEAH	
Small Eng. Dist.	7995 W. 26th Court	33016
GEORGIA	EAST POINT	
East Point Cycle & Key Inc.	2834 Church St.	30344
ILLINOIS	LYONS	
Keen Edge Co.	8615 Ogden Ave.	60534
INDIANA	ELKHART	
Parts & Sales Inc.	2101 Industrial Pkwy.	46516
IOWA	DUBUQUE	
Power Lawn & Garden Equip.	2551 J.F. Kennedy	52001
LOUISIANA	NEW ORLEANS	
Suhren Engine Co.	8330 Earhart Blvd.	70118
MARYLAND	TAKOMA PARK	
Center Supply Co.	6867 New Hampshire Ave.	20912
MASSACHUSETTS	SPRINGFIELD	
Morton B. Collins Co.	300 Birnie Ave.	01107
MICHIGAN	LANSING	
Lorenz Service Co.	2500 S. Pennsylvania	48910
	MOUNT CLEMENS	
Power Equipment Dist.	340 Hubbard	48043
MINNESOTA	HOPKINS	
Hance Distributing Inc.	420 Excelsior Ave. W.	55343
MISSOURI	KANSAS CITY	
Automotive Equip. Service	3117 Holmes St.	64109
	ST. JOSEPH	
Ross-Frazer Supply Co.	8th and Monterey	64503
	ST. LOUIS	
Henzler, Inc.	2015 Lemay Ferry Rd.	63125
NEW JERSEY	BELLMAWR	
Lawnmower Parts Inc.	717 Creek Rd.	08030
NEW MEXICO	ALBUQUERQUE	
Spitzer Eng. & Parts Co.	1023 Third Ave. N.W.	87103
NEW YORK	CARTHAGE	
Gamble Dist., Inc.	West End Ave.	13619

BRIGGS AND STRATTON, TECUMSEH AND PEERLESS PARTS AND SERVICE

Briggs & Stratton, Tecumseh and Peerless parts and serv should be handled by your nearest authorized engine service firm. Check the yellow pages of your telephone directory under the listing **Engines—Gasoline**, Briggs & Stratton or Tecumseh Lauson.

OHIO	CARROLL	
Stebe's Mid-State Mower Supply	Box 366, 71 High St.	43112
	CLEVELAND	
Bleckrie, Inc.	7900 Lorain Ave.	44102
	WADSWORTH	
National Central	687 Seville Rd.	44281
	YOUNGSTOWN	
Burton Supply Co.	1301 Logan Ave. Box 929	44501
OKLAHOMA	MUSKOGEE	
Victory Motors, Inc.	605 S. Cherokee	74401
OREGON	PORTLAND	
Kenton Supply Co.	8216 N. Denver Ave.	97217
PENNSYLVANIA	HARRISBURG	
EEOC Inc.	4021 N. 6th St.	17110
	PHILADELPHIA	
Thompson Rubber Co.	5222-24 N. Fifth St.	19120
	PITTSBURGH	
Bluemont Co.	11125 Frankstown Rd.	15235
	PUNXSUTAWNEY	
Frank Roberts & Sons	R.D. 2	15767
	SCRANTON	
Scranton Auto Ignition Co.	1133-35 Wyoming Ave.	18509
TENNESSEE	KNOXVILLE	
Master Repair Service	2000 Western Ave.	37921
	MEMPHIS	
American Sales & Service, Inc.	3035-43 Bellbrook	381
TEXAS	DALLAS	
Marr Brothers, Inc.	423 E. Jefferson	75203
	FORT WORTH	
Woodson Sales Corp.	6733 Baker Blvd. Hwy. 10	76118
	HOUSTON	
Bullard Supply Co.	2409 Commerce St.	77003
	SAN ANTONIO	
Engine House Inc.	8610 Botts Lane P.O. Box 17867	78217
UTAH	BOUNTIFUL	
Powered Products	485 N 500 W.	84010
VIRGINIA	ASHLAND	
RBI Corp.	101 Cedar Ridge Dr.	23005
WASHINGTON	SEATTLE	
Equip. Northwest	1410 14th Ave.	98122
WISCONSIN	CHILTON	
Horst Dist. Inc.	444 N. Madison St.	53014
NORTH CAROLINA	GOLDSBORO	
Smith Hardware Co.	515 N. George St.	27530
	GREENSBORO	
Dixie Sales Company	335 N. Green	27402

WARRANTY PARTS AND SERVICE POLICY

(0484)

The purpose of warranty is to protect the customer from defects in workmanship and materials, defects which are NOT detected at the time of manufacture. It does not provide for the unlimited and unrestricted replacement of parts. Use and maintenance are the responsibility of the customer. The manufacturer cannot assume responsibility for conditions over which it has no control. Simply put, if it's the manufacturer's fault, it's the manufacturer's responsibility; if it's the customer's fault, it's the customer's responsibility.

CLAIMS AGAINST THE MANUFACTURER'S WARRANTY INCLUDES:

1. Replacement of Missing Parts on new equipment.
2. Replacement of Defective Parts within the warranty period.
3. Repair of Defects within the warranty period.

All claims MUST be substantiated with the following information:

1. Model Number of unit involved.
2. Date unit was purchased or first put into service.
3. Date of failure.
4. Nature of failure.