

BURLEY®

d'LITE™

LADY BUG™

SOLO™

ENCORE™

CUB™

BEE™



Owner's Instruction and Safety Manual

Congratulations!

Your Burley® trailer is the leading choice of discriminating bicycle trailer owners worldwide. Every effort has been made to ensure your purchase is of top quality and proven design, ready to provide you with many years and miles of happy, safe trailering.

IMPORTANT:

Because some of the features and guidelines for using your Burley merit close attention, it is very important that you familiarize yourself with the trailer by reading this entire manual before use. If you have any questions, please contact your Authorized Burley Dealer or check our website at www.burley.com.

Table of Contents

Introduction	Pg. 3
Hardware Bag Contents and Tool Lists	Pg. 6
Unfolding Your Trailer	Pg. 7
Mounting the Reflectors	Pg. 8
Attaching the Wheels	Pg. 9
Installing and Operating the Tongue	Pg. 10
Attaching the Handle	Pg. 12
Installing the Cub Parking Brake	Pg. 13
Using the Parking Brake	Pg. 14
Installing the Safety Flag	Pg. 14
Installing the Cover	Pg. 14
Using the Padded Seat, Shoulder Harness, Reclining Seat and Helmet Pocket	Pg. 16-18
Hitching Your Burley to Your Bicycle	Pg. 19
Maintenance and Storage	Pg. 21
Parts Lists and Diagrams	Pg. 22-27
Warranty	Pg. 28

Introduction

Your Burley is shipped 95% factory-assembled. You need only to mount the reflectors, install the tongue, attach the wheels, handle, brake, and safety flag, and snap the cover into place. Once you've read the safety guidelines, you're ready to go. Initial assembly should take 10-15 minutes. Before trailering, be sure you have a thorough understanding of the safety harness and of trailer hitch operation. Practice folding and unfolding your trailer. Make sure the trailer wheels and hitch are securely attached.

NOTE:

Any reference to left or right is made in the direction of travel, as if you were sitting in the child seat looking forward.

Safety Guidelines

Bicycling with a trailer is different from bicycling without one, in ways which aren't always obvious. It is essential that you read and understand all of the following safety guidelines—in addition to the warnings and instructions in the following sections—prior to using your trailer. Contact your Authorized Burley Dealer or Burley if any of these instructions are unclear.

WARNING

Bicycling with a trailer, and bicycling in general, can be hazardous. Failure to observe any of the safety guidelines in this manual could result in accident and serious injury or death.

Use a Well-Maintained Bicycle and Trailer

Use a bicycle which is in good working condition with good brakes. A frequent safety check of your bicycle is essential. Inspect and maintain your trailer as outlined in the "Safety Check Lists" of this manual. Have your Authorized Burley Dealer maintain and inspect your bicycle and trailer if you are not qualified to do so.

Loading Your Trailer

Do not overload the trailer. Maximum trailer load limit for children and/or cargo is 100 lbs. (40 kg. in Europe). When placing children or cargo into the trailer, keep the load centered or forward of the axle. Pack the load as low as possible and make sure items cannot shift around. Loose, heavy objects can injure passengers in event of a sudden stop or tip over.

Starting and Stopping

Because of the trailer's additional weight, a bicycle pulling a trailer will be slower to start and stop, and because of its length, requires more time to cross streets or paths. Your entire vehicle is heavier and less responsive. Think ahead and anticipate stops, turns and starts. Note that your trailer extends further out on the left; allow for this difference when turning, passing pedestrians or approaching obstacles, such as posts on bike paths. Experiment with a loaded trailer in an uncongested area to become familiar with how your heavier, longer vehicle responds.

Prevent Trailer Tip Over

Like automobile and motorcycle trailers, bicycle trailers can tip over. Do not pull your trailer over curbs or hit holes or other road obstructions. Instruct children not to bounce or lean, which can cause a shift of weight. Do not make high-speed turns or descents when pulling the trailer. Always corner with caution at 5 mph or less, as the trailer cannot lean into a turn the way a bicycle can. Do not travel faster than 15 mph—all road irregularities and your slower reaction time are greatly magnified.

WARNING

Trailers can tip over, causing damage to trailer and serious injury to cyclist or passengers. AVOID causes of tip over, especially:

- Children leaning or bouncing
- Hitting potholes, curbs, other road obstructions
- Taking turns too fast
- Sudden swerving
- Off-banked turns
- Improper wheel installation
- Improper tire inflation

No Motorized Vehicles

Never pull your Burley trailer with a motorized vehicle, as the increased acceleration and speed could damage the trailer or cause it to tip over.

Always Use Your Cover

To protect your children from flying debris, always use your cover. Never leave children unattended in direct sunlight, as heat buildup in the trailer can cause serious harm. Open or close the vinyl window and periodically check to make sure your children are comfortable.

Wear Helmets

Numerous studies have shown that head injury is the leading cause of bicycling fatalities. Helmets prevent or reduce bicyclists' head injuries; it is essential that both cyclist and passengers use approved bicycling helmets at all times.

Proper Wheels and Tires are Essential

Use only the factory-supplied wheels, and keep them properly maintained. Inflate tires to 30–35 P.S.I. and check pressure before each use. Do not use higher-pressure tires or knobbies. We recommend using only tires with street tread.

Know Your Trailer Hitch

Clamp the hitch securely to the bicycle frame, and check for a tight attachment each time you use the trailer. Refer to “Hitching Your Burley to Your Bicycle” and “Maintenance and Storage” sections of this manual for proper installation, use and maintenance of your hitch.

Use Your Flag

Always use the safety flag—it will help make you more visible to motorists and other cyclists.

Protect Your Children

Use the shoulder harness, lap belt, and child helmets on your children at all times. Always fasten the seat belt so that each child is held securely. For maximum stability and safety, seat a single child in the center of the trailer. Periodically check placement of the shoulder straps, especially for sleeping children. Make sure children cannot put a finger into the wheel spokes.

Observe Age and Height Restrictions

The trailer seat is intended only for children old enough to wear a helmet and sit upright and alone. Adequate neck strength is required to hold his/her head upright while trailering. A physician should evaluate anyone who is of questionable developmental age for trailering. Never carry a child whose sitting height (with helmet) is above the roll bar, because their chance of injury is significantly higher in the event of a tip over.

Hardware Bag Contents and Tool List

IMPORTANT:

Please verify that you have received all of the contents listed. Do not proceed with assembly if any parts are missing; contact Burley immediately for replacement parts.

Hardware Bag Contents:

All: Warranty Card, Burley Owner's Instruction & Safety Manual

d'Lite™, Encore™, Solo™, Lady Bug™:

- (2) red reflectors
- (2) clear reflectors
- (2) reflector brackets
- (4) hex head screws
- (1) hitch

Tools Required:

Phillips screwdriver

Bee™:

- (2) red reflectors
- (2) hex head reflector screws
- (2) 1" plastic reflector brackets
- (1) hitch

Phillips screwdriver

Cub™:

- (1) Cub Brake Assembly
- (3) #10 x 5/8 Phillips pan screws
- (3) #10 spring washers
- (3) #10 x 1" fender washers
- (1) hitch

Two No. 2 Phillips screwdrivers

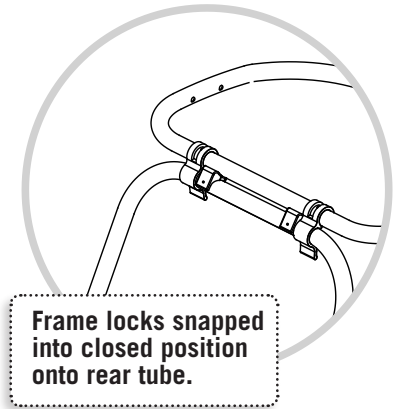
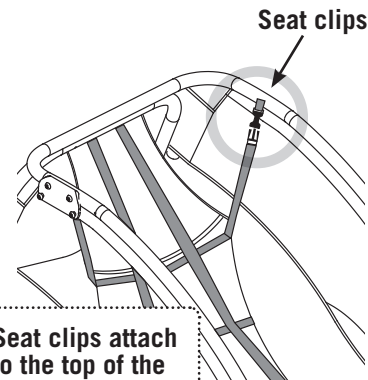
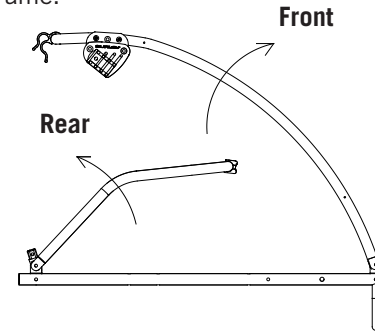
Note: European models have an additional light hardware bag.

Unfolding Your Burley Trailer

To unfold your trailer, rotate the front tube upward and the rear tube back until they meet on the two plastic saddles. Then rotate the two frame locks to snap onto the rear tube. The frame locks should connect adjacent to, and to the outside of, the two plastic saddles.

d'Lite™, Encore™, Lady Bug™, Cub™ – After the frame locks are locked in place, attach the hooks on the seat sides to the D-rings by the windows inside the trailer.

Solo™ only – After the frame locks are locked in place, clip the female buckle ends on the two seat side straps into the male buckle ends on the inside of the frame.



⚠ WARNING

Check that the frame locks are properly engaged before using the trailer. Failure to do so can result in serious injury.

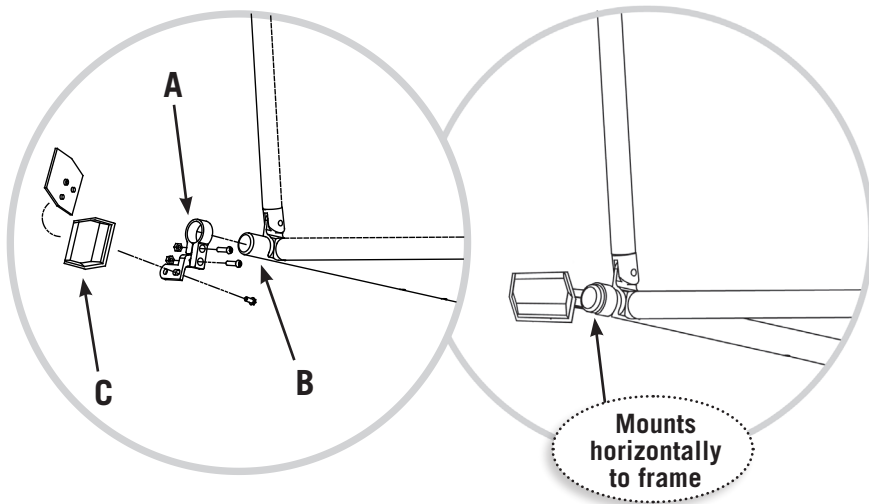
Mounting the Reflectors

Cub™: Factory-installed Bee™: Rear Reflectors Only
All other models:

FRONT: Clear front reflectors are mounted horizontally to both sides of the trailer fabric front. “TOP” is marked on the reflector front. Locate the grommets on the trailer fabric front, insert the screw into the reflector back through the grommet, and tighten snugly. Repeat for the other side.

REAR: Red reflectors are mounted horizontally to both sides of the rear of the main frame tube, with the reflectors extending out past the sides.

1. Snap the posts on the red reflectors into the openings in the reflector brackets, and with the provided screw, screw the pieces together.
2. Loosen the black screw next to the clamp (A) on the reflector bracket. Slide the bracket clamp onto the rear side section (B) of the main frame tube. Make sure the reflector side marked TOP is to the top.
3. Tighten screw snugly, making sure reflector extends out past the trailer side. Repeat for the other side.

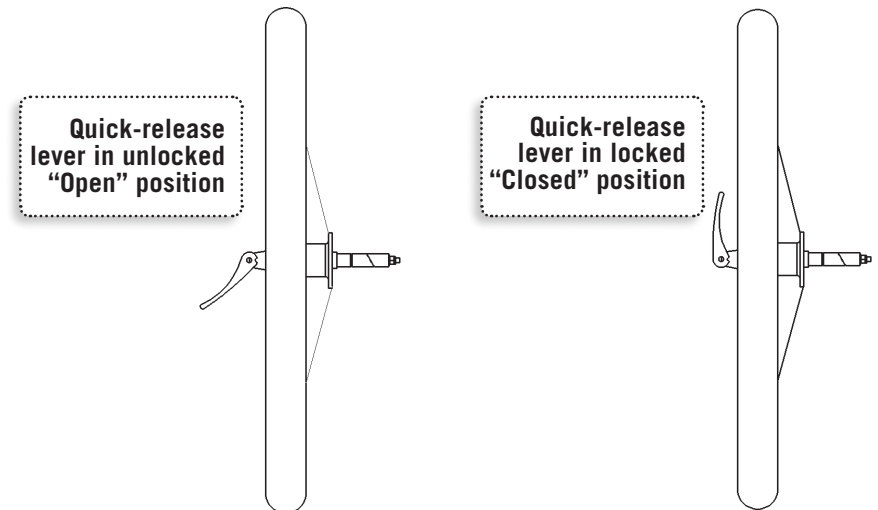


WARNING

Make sure both reflectors face outward. Incorrectly installed reflectors can reduce visibility at night and cause an accident or serious injury.

Attaching the Wheels

First, verify that the tires are inflated to 30-35 P.S.I. Tip the trailer frame onto its rear end. With the quick-release lever in the “OPEN” position, insert the wheel axle assembly completely into the hollow trailer axle, making sure that the horizontal shaft goes all the way into the axle. Tighten the thumb nut, so that you feel resistance halfway through tightening the lever. Once the wheel is fully seated in the hollow axle, position the quick-release lever so that it is aimed to the rear of the trailer in the “CLOSED” position (the lever is marked for OPEN or CLOSED positions). Repeat for the other wheel. Note: wheels are not centered on the axle.



WARNING

Make sure wheels are held securely, with wheel shaft fully inserted into the hollow axle. You should not be able to rock or shift wheels. Improperly installed wheels can fall off, causing an accident or serious injury.

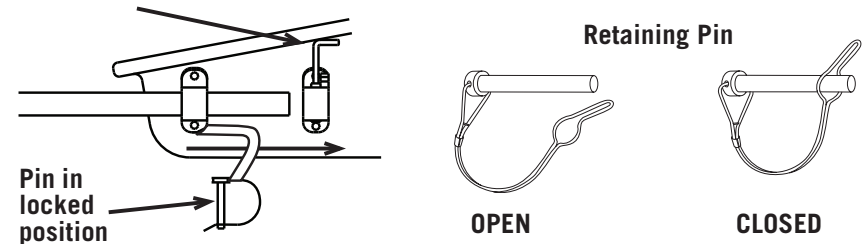
Installing and Operating the Tongue

d'Lite™, Encore™, Solo™, Lady Bug™

Tip the trailer onto its rear end. Slide the tongue through the LEFT front tongue receptacle. Depress the safety button to allow it to slide back through the rear tongue receptacle. Line up the rear hole on the tongue with the hole in the rear tongue receptacle. Insert the pin through both holes. Once inserted, rotate the pin's spring clip to engage the pin underneath the tongue receptacle. Always check to ensure the tongue is properly installed before using your trailer.

⚠️ WARNING

Never operate the trailer without the tongue retaining pin locked in place. An unlocked tongue can loosen or detach, and cause accident resulting in serious injury.



IMPORTANT:

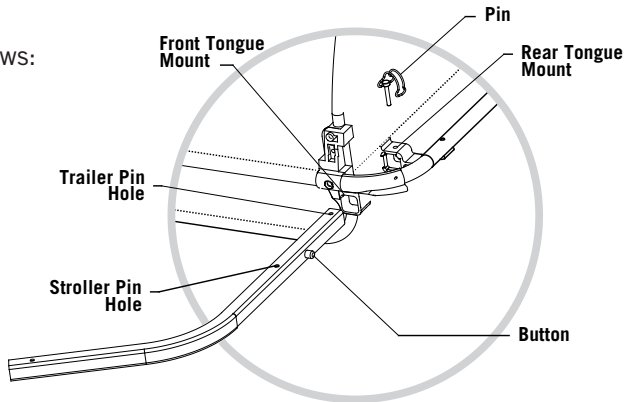
The tongue pin is captured between the tongue receptacle and the lip of the poly shell. It should never be completely removed from the tongue receptacle. The tongue pin must be locked into place before using the trailer. If the pin is not properly locked, the trailer could separate from the bicycle, resulting in an accident or serious injury. The retaining pin is a backup for the tongue pin. Under no circumstances should the trailer be towed with only the retaining pin engaged.

Cub™

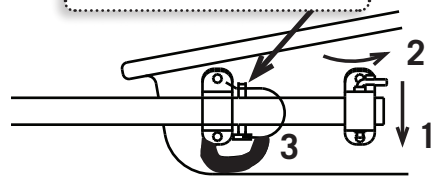
Slide the tongue through the two plastic tongue receptacles on the LEFT side of the trailer until the end of the tongue is flush with the back edge of the rear tongue receptacle.

Secure the tongue as follows:

1. Slide the retaining pin in the rearward receptacle through the hole provided in the tongue.
2. Secure it and lock the pin by rotating it toward the rear of the trailer as shown.
3. Slip the retaining pin through the forward hole in the tongue and lock in place. Refer to the illustration showing the locked position. Firmly pull on the tongue to ensure that it is secure.



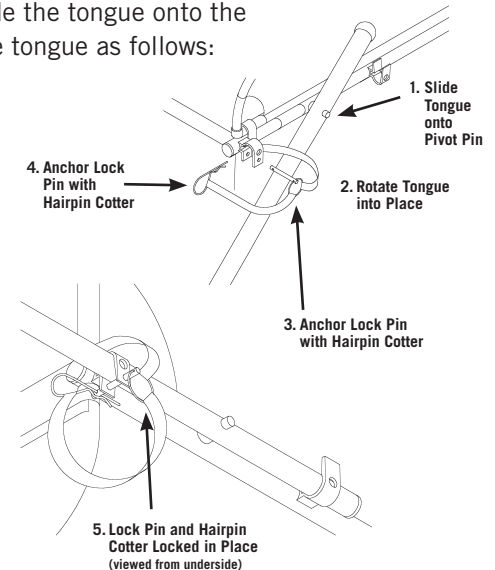
Forward hole in tongue



Bee™

Tip the trailer onto its back end. Slide the tongue onto the pivot pin at the left front. Secure the tongue as follows:

1. Remove the hairpin cotter and lock pin from the front tongue receptacle, rotate the tongue up into place, and snap it into the two plastic tongue receptacles.
2. Push the lock pin fully into the front tongue receptacle.
3. Rotate the lock pin and locate the hole in it, between the receptacle and the trailer frame. Anchor the lock pin by inserting the hair pin cotter all the way into the hole in the lock pin.



⚠️ WARNING

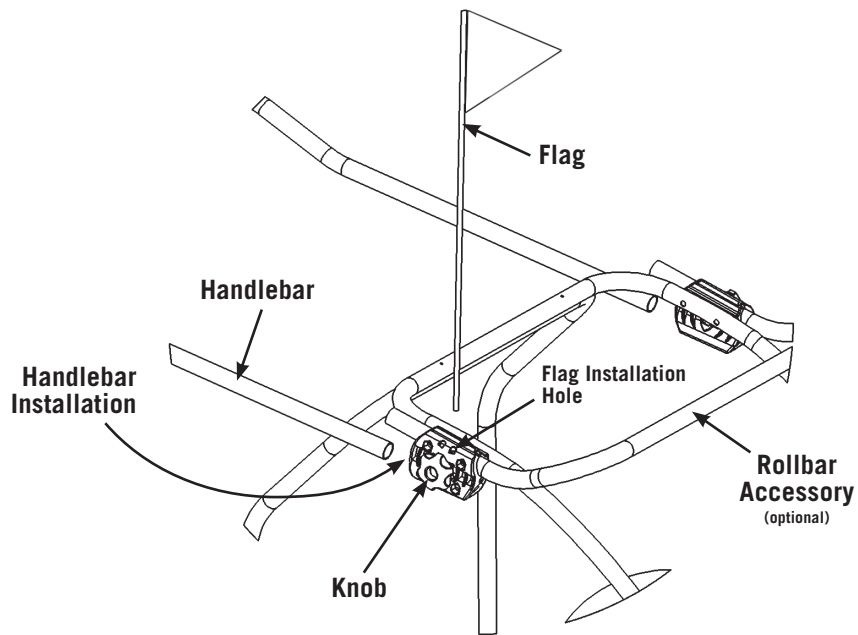
Never operate the trailer without the tongue lock pin and hairpin cotter locked in place. An unlocked tongue can loosen or detach, and cause accident, resulting in serious injury.

Attaching the Handle

d'Lite™, Encore™, Solo™, Lady Bug™, Cub™
(Bee™: no handle)

Your trailer comes with a handle which allows for easier maneuvering of the trailer when it's not attached to your bicycle. The handle is also an important part of the optional Burley Jogger Kit™ and the optional Burley Stroller Kit™, which are available at your Authorized Burley Dealer.

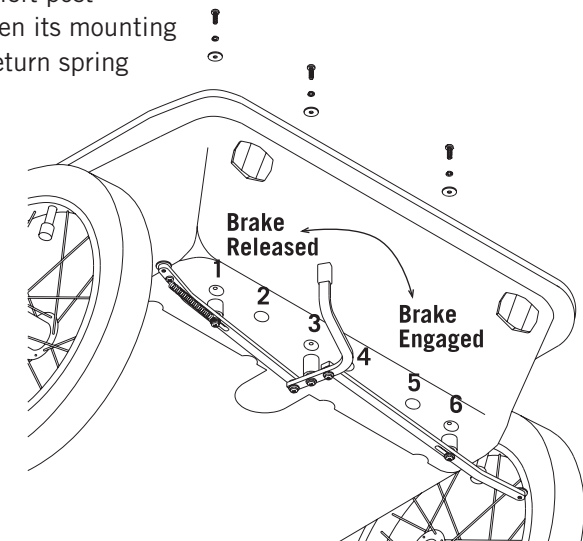
To install the handle, slide it into the lower handle bar receivers and tighten the knobs. (The upper handlebar receivers have spacers in them for the optional Burley Rollbar, available from your Burley dealer.) To change the position, remove the handle from the handle bar receivers, flip it over and reinstall it as described above.



Installing the Cub™ Parking Brake

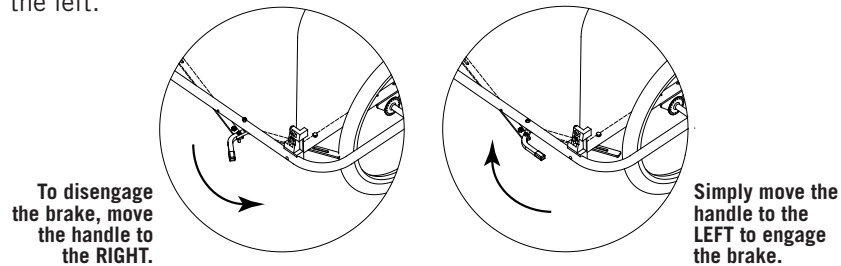
The trailer should be fully unfolded and the tongue removed.

1. Put the trailer on its nose on the floor with the roll cage leaning against a wall or table. Sort the contents of the hardware bag.
2. Facing the underside of the bucket, locate the rear row of six molded depressions (see illustration). Holes are drilled in the first, third and sixth depressions (numbered from the left). See illustration.
3. Put a spring washer and then a fender washer on a mounting screw. Repeat for the other two screws.
4. Place the brass center post of the brake assembly in the number 3 depression so that the black vinyl grip on the brake handle clears the rear of the bucket. Let the brake arms hang down. Hold the center post and screw it into place with a Phillips screwdriver.
5. Reach inside the bucket and thread the screw/spring washer/fender washer stack through the punched hole and into the brake assembly center post. Don't tighten it yet.
6. Swing each of the two brake assembly arms into place in turn, so their posts enter their respective depressions, and fasten them from the inside of the bucket with the screw/spring washer/fender stacks.
7. Using two screwdrivers, one inside the bucket and one outside, tighten the mounting screws firmly, until the spring washers are fully flattened between the mounting screw heads and fender washers.
8. Take care to keep the far left post from rotating as you tighten its mounting screw so that the brake return spring does not distort.



Using the Parking Brake For All Trailers Except the Bee™

Engage the parking brake by pushing the handle to the right. This pushes the brake arms outward so that the tip of each brake engages the inside of each tire. Exercise caution when disengaging the brake, as it may spring to the left.



Installing the Safety Flag

Bee™ Only:

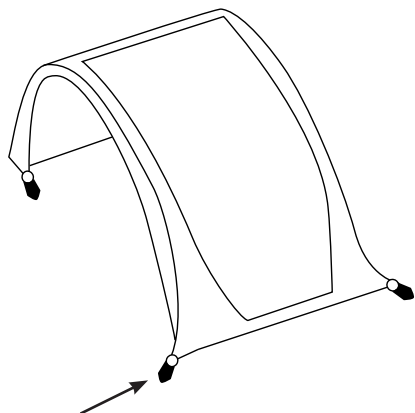
On the outer left side of the trailer, insert the safety flag pole through the webbing loop and into the flag pocket.

All Other Models:

Insert the safety flag pole into the hole in the top of the LEFT handle bar receiver. (See handle bar illustration on page 12 for location of correct hole.)

DO NOT USE YOUR TRAILER WITHOUT THE SAFETY FLAG.

Installing the Cover



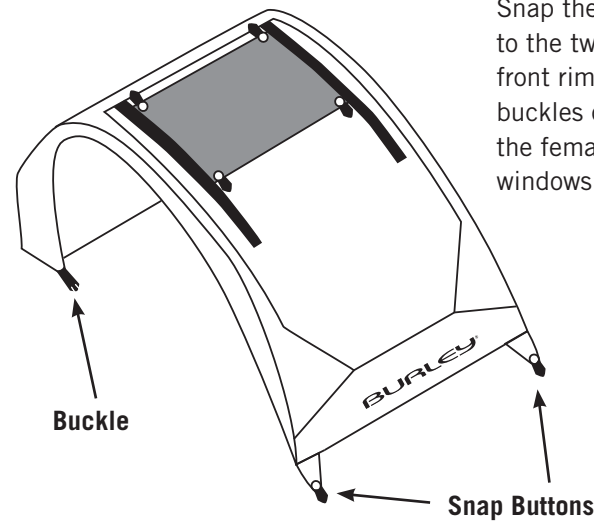
Cover Snap Button

Bee™:

Snap the cover snap buttons to the snap posts on the top of the frame. Attach the cover's Velcro hook strips to the Velcro loop strips on the trailer body. Then hook the rubber O-rings over the back and front frame ends. To stow the window, unhook the O-rings from the trailer front. Roll the window up and secure it by inserting it into the elastic loops at the top.

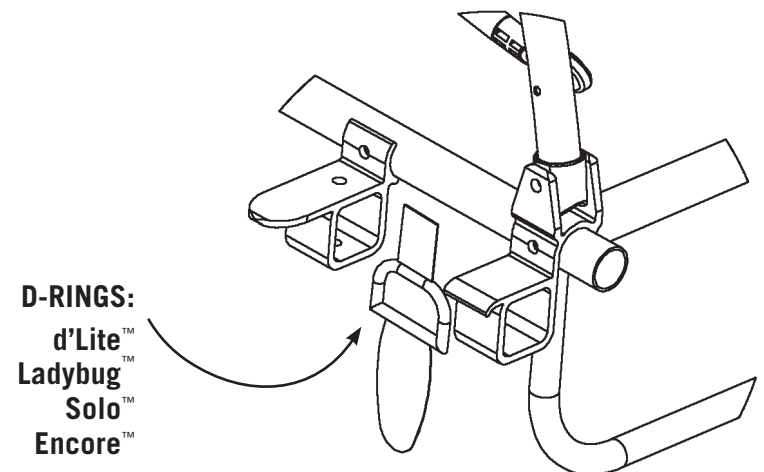
Cub™:

Snap the two front snap buttons to the two snap studs under the front rim corners. Attach the male buckles on the rear cover corners to the female buckles below the side windows.



All Other Models:

Slip D-rings on the front cover corners over the outer hooked corners of the front tongue receptacles. Attach male buckles on rear cover corners to female buckles below the side windows. To stow the front window (all models except the Bee), unzip it, roll it up and insert the loop Velcro ends of the elastic straps into the hook Velcro holders on the cover top. The Adjustable Sunshade slides up and down as needed.



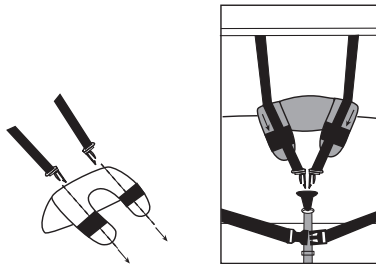
Padded Seat & Shoulder Harness, Child Seat Recliner, and Recessed Helmet Pocket (d'Lite™, Solo™, Lady Bug™, Cub™)

To Install Seat Pad:

Attach the seat pad Velcro hook strips to the loop Velcro strips on the seat.

To Install Shoulder Harness Pad:

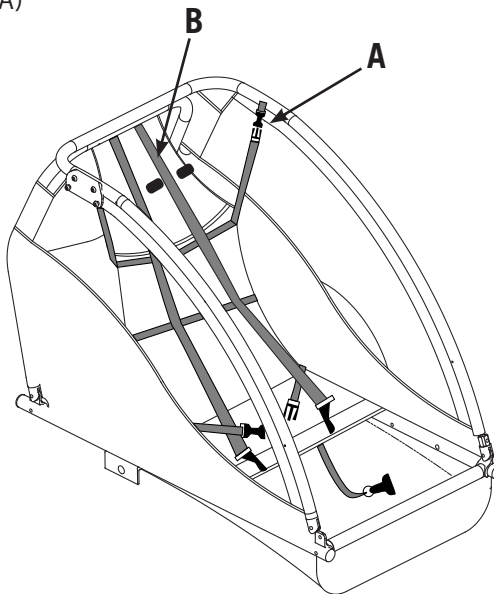
Insert the shoulder straps into the shoulder harness pad as shown in the drawing at the right. The shoulder straps should be oriented so that the FLAT parts of the male buckles are facing toward each other.



Using the Child Seat Recliner

The child seat can be reclined for added comfort by making the following adjustments:

1. Loosen the tension on the straps (A) attached to the top of the frame.
2. Loosen the tension in the helmet pocket straps (B).



Using the Recessed Helmet Pocket

(d'Lite™, Solo™, Lady Bug™, Cub™)

The helmet pocket, which is designed to provide added room for the back side of a child's helmet, can be modified by loosening/tightening the helmet pocket straps (B) as required.

Using the Child Seat Divider

(d'Lite™, Lady Bug™ only)

This feature keeps two passengers from sliding to the center of the seat. Connect center crotch strap O-ring to snap hook located on the front splash guard. Adjust strap tension with the plastic slider on the crotch strap.
NOTE: Use the Seat Divider feature only when transporting two passengers.

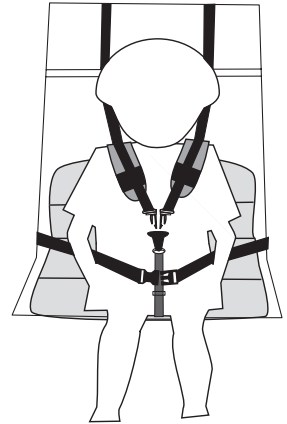
Using the Seat Harness

IMPORTANT:

Only passengers who are able to wear a helmet and sit upright, unassisted should ride in a child trailer. Adequate neck strength is required by passengers to hold their heads upright while trailering. A physician should evaluate anyone who is of questionable developmental age for trailering.

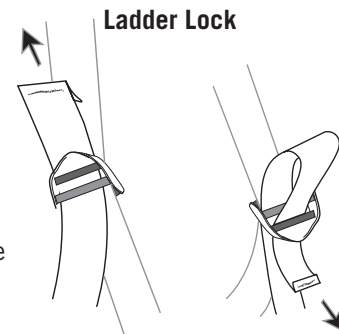
Single Passenger, Solo™:

1. Make sure the seat pad and shoulder harness are installed as indicated in the previous section.
2. Position the child in the center of the seat.
3. Snap shoulder straps into the Y-buckle, with the buckle positioned at the child's sternum.
4. Make sure the shoulder straps are adjusted so that the child cannot move too far forward in the seat.
5. Fasten and adjust the lap belt so that it is snug.



Single Passenger, All Other Models:

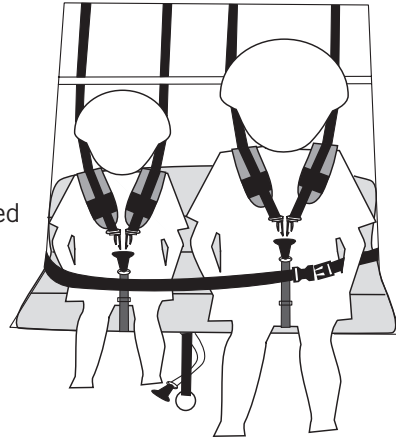
1. Unclip the center support strap (with O-ring).
2. Remove both shoulder harnesses (if applicable) from the shoulder straps. Unclip the Y-buckle if necessary. Store one of the shoulder harnesses in a safe place. Leave outboard shoulder straps dangling.
3. Remove the two center shoulder straps by unthreading them from the ladder locks.
4. Trade the position of the shoulder straps and re-insert the straps into the ladder locks as shown in the illustration to the right. The flat parts of the male portion of the Y-buckle should face toward the center.
5. Install one shoulder harness assembly in the center position as shown at above left.
6. Seat the child in the center of the seat.
7. Snap shoulder straps into the Y-buckle, with the buckle positioned at the child's sternum.
8. Make sure the shoulder straps are adjusted so that the child cannot move too far forward in the seat.
9. Fasten and adjust the lap belt so that it is snug.



Two Passengers, All Models (Except Solo™):

For two children, use both shoulder harnesses and two outer crotch straps.

1. If your trailer was set up for single-child use, reverse the process above in the Single Passenger section. Set up the restraint system for two children, with the male portion of each Y-buckle facing the center of each seating position.
2. Attach the center support strap with the O-ring.
3. Seat the first child on one side of the trailer.
4. Snap shoulder straps into the Y-buckle, with the buckle positioned at the child's sternum.
5. Make sure the shoulder straps are adjusted so that the child cannot move too far forward in the seat.
6. Repeat for the second child.
7. Fasten and adjust both lap belts so they are snug.



WARNING

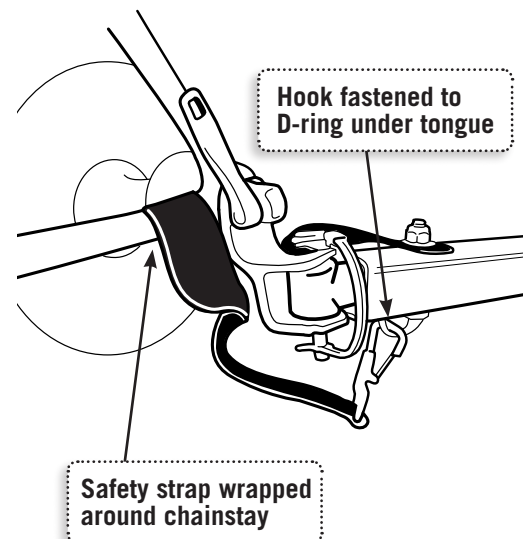
Child and cyclist must wear helmets when trailering. Helmets can prevent or significantly reduce head injury in event of accident.

The junction of Y-buckle must be positioned at child's sternum to work correctly. Belts or buckles positioned near your child's neck can cause discomfort or serious injury. Check child periodically to ensure that he/she has not slipped from correct seated position.

Hitching your Burley to Your Bicycle

The Burley standard trailer hitch was designed to quickly and safely attach to virtually all types of bicycles. It is attached to the left rear dropout (the non-chainring side) of your bicycle.

1. Remove the quick release lever assembly from your bike and set it aside.
2. Line up the hole on the flat side of the hitch upper arm with the left rear dropout hole.
3. Reassemble the quick release assembly through the hitch and dropout, but don't tighten it yet.
4. Slide the hitch receiver end of the tongue between the two hitch side arms, and line up the holes. The hitch should clear any racks, bags, or fittings you have on your bicycle. If there is any interference, contact your Authorized Burley Dealer.
5. Open the retaining pin and insert the pin through the holes.
6. Rotate the pin's spring clip and close the pin.
7. Now tighten the quick release lever, with the lever pointing to the rear of the bike. When properly adjusted, you will feel resistance halfway through tightening the lever (when the lever is pointing straight out away from the bike).
8. Wrap the safety strap around the inside of the chain stay twice and then over the hitch body. Fasten the hook to the D-ring on the underside of the tongue end.



WARNING

The quick release lever must be in the closed position. Do not operate the trailer without the hitch safety strap properly installed. A dangling safety strap can contact spokes and damage the rear wheel or cause an accident resulting in serious injury. The hitch must not interfere with racks, bags, or fittings. Inspect the hitch and tongue frequently for damage or loose fasteners. Interfering parts or damaged hitch can cause an accident resulting in serious injury.

Safety Checklists

Before Each Ride:

- Wheels tightly attached
- Tire pressure at 30–35 P.S.I.
- Hitch properly secured with safety strap in place
- Locked retaining pins for tongue and roll bar
- Maximum load 100 lbs. (40 kg. in Europe)
- Bicycle safety check, especially brakes and tires
- Helmets for children and rider
- Safety flag in place
- Both seat buckles in rear of seat are securely fastened

Monthly Checklist

- Inspect tongue and hitch for damage, scratches, or loose fasteners
- Inspect tongue pivot for smooth operation: tongue should fold and unfold freely; lubricate brass bushing if necessary (Bee only)
- Inspect frame tubing and hardware for cracks, damage, or loose parts
- Inspect tires for wear and cracks
- Inspect wheels for trueness and cracks
- Inspect wheel bearings for wear
- Inspect fabric parts, child seat, and harness for rips, abrasion, or missing or damaged hardware
- Contact Authorized Burley Dealer for repairs/replacement of any damaged or worn-out parts

Maintenance and Storage

WARNING

Do not use or store trailer at temperatures below 32°F (0 C), as hitch rubber flex connector can become brittle and possibly break, causing accident resulting in serious injury.

Hitch and Tongue Maintenance

Bee™ only: Lubricate the tongue-pivot spindle twice a year for normal use, or monthly if used in wet or salty conditions.

1. With a medium flat-blade screwdriver, remove inner cap on the tongue end.
2. Using a grease gun equipped with needle-type injector, squirt grease into small hole in brass bushing until old grease flushes out bushing ends.
3. Replace inner cap on tongue end to protect pivot bushing.

IMPORTANT:

For any spindle service other than lubrication, contact your Authorized Burley Dealer.

Fabric Care

Your trailer body is made of a tough, waterproof polyester fabric, which is highly resistant to fading. It can be easily cleaned with any mild soap or detergent and warm water. For heavy soiling, use a nylon bristle brush. Do not use bleach for cleaning, as it will damage the fabric. The fabric is an important part of your trailer's structure, and provides a protective environment for child passengers. Replace any fabric that is ripped, scuffed, or otherwise damaged.

Polyester fabric will eventually fade, especially when exposed to direct sunlight. To extend the life of your trailer, wipe it dry (to help avoid mildew) and store it out of direct sunlight in a dry, well-ventilated area. Burley offers a durable polyester storage cover to protect your trailer from the elements when it is not in use. Contact your Authorized Burley Dealer for details.

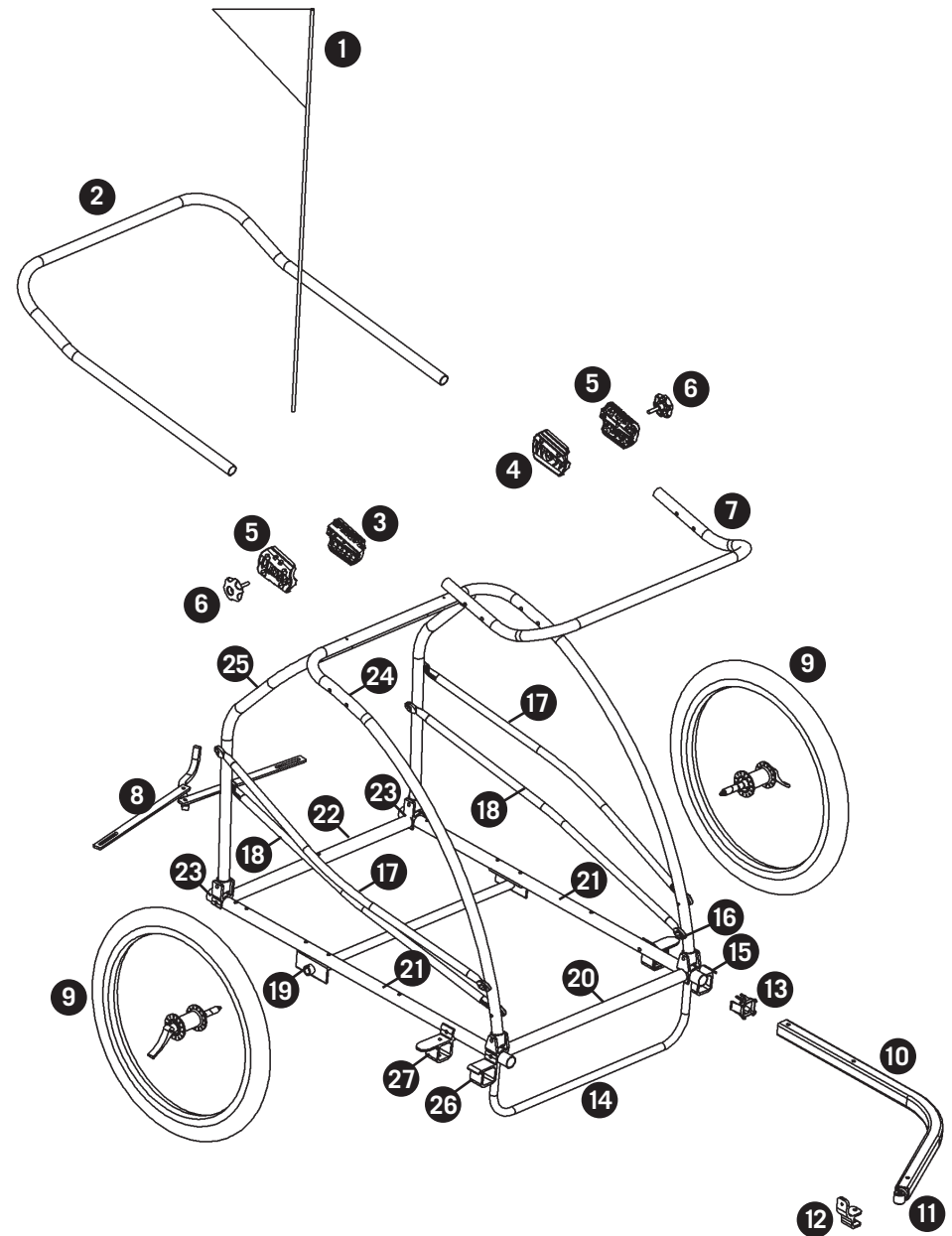
WARNING

Trailer with damaged or ripped fabric components can permit harmful contact between child and spokes or pavement, and cause serious injury. Replace damaged components immediately.

Parts List & Diagram d'Lite™, Ladybug™, Encore™, Solo™

Note: Contact Burley about parts not listed.

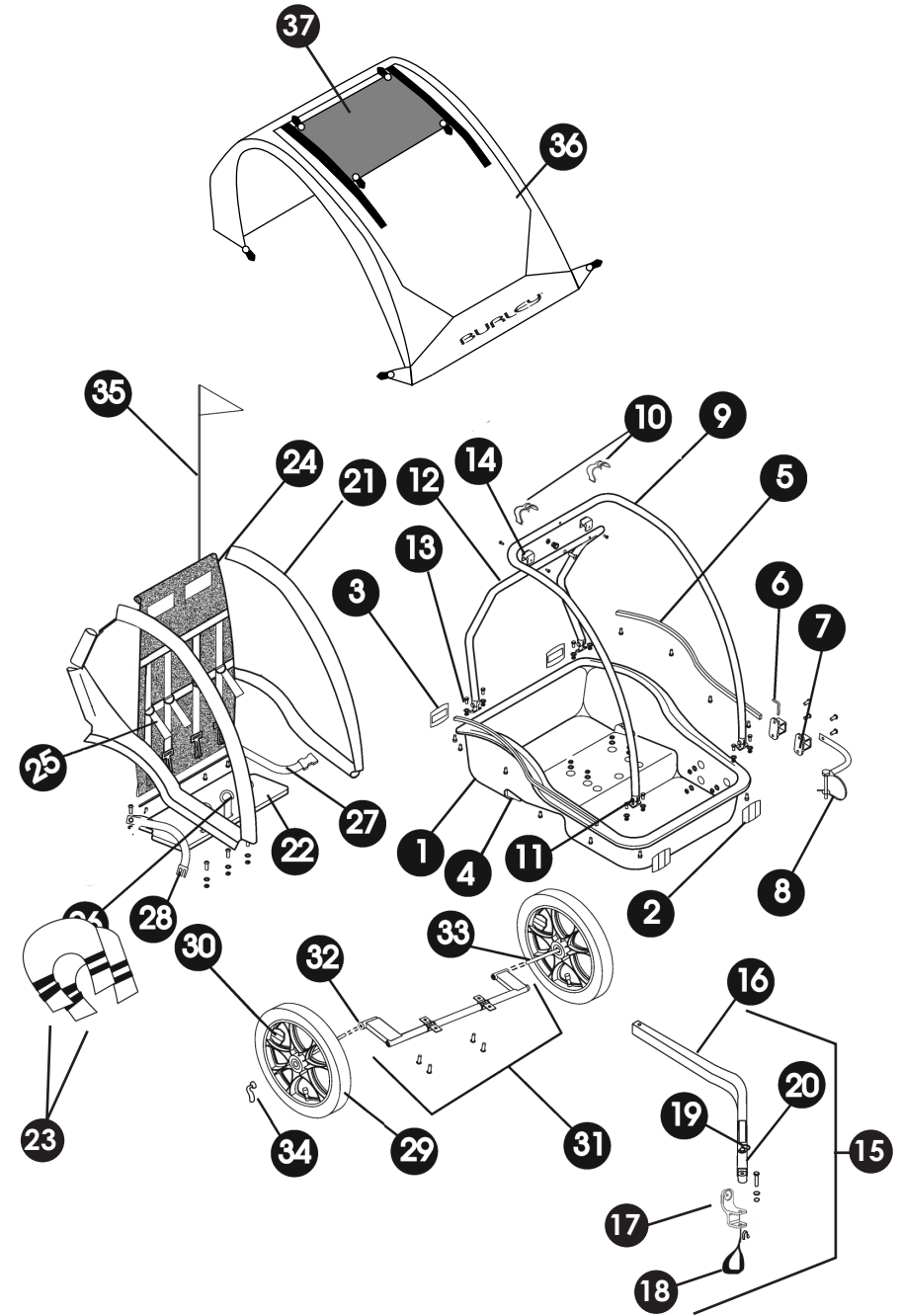
1. Safety flag
2. Handlebar
3. Plastic handlebar mount, inner right
4. Plastic handlebar mount, inner left
5. Plastic handlebar mount, outer
6. Knob
7. Roll bar (European trailers only)
8. Brake
9. Wheel
10. Tongue
11. Hitch coupling for tongue
12. Standard hitch
13. Tongue glide
14. Frame assembly, bag holder
15. Tongue mount, front
16. Tongue mount, rear
17. Upper batten assembly (d'Lite, Lady Bug only)
18. Lower batten assembly (d'Lite, Lady Bug only)
19. Axle/tube assembly
20. Frame assembly, cross tube, front
21. Frame assembly, main tube
22. Frame assembly, cross tube, rear
23. Hinge, rear
24. Frame assembly, front
25. Frame assembly, rear
26. Jogger mount, front
27. Jogger mount, back



Cub™ Parts List & Diagram

Note: Subassemblies are indented (contact Burley about parts not listed).

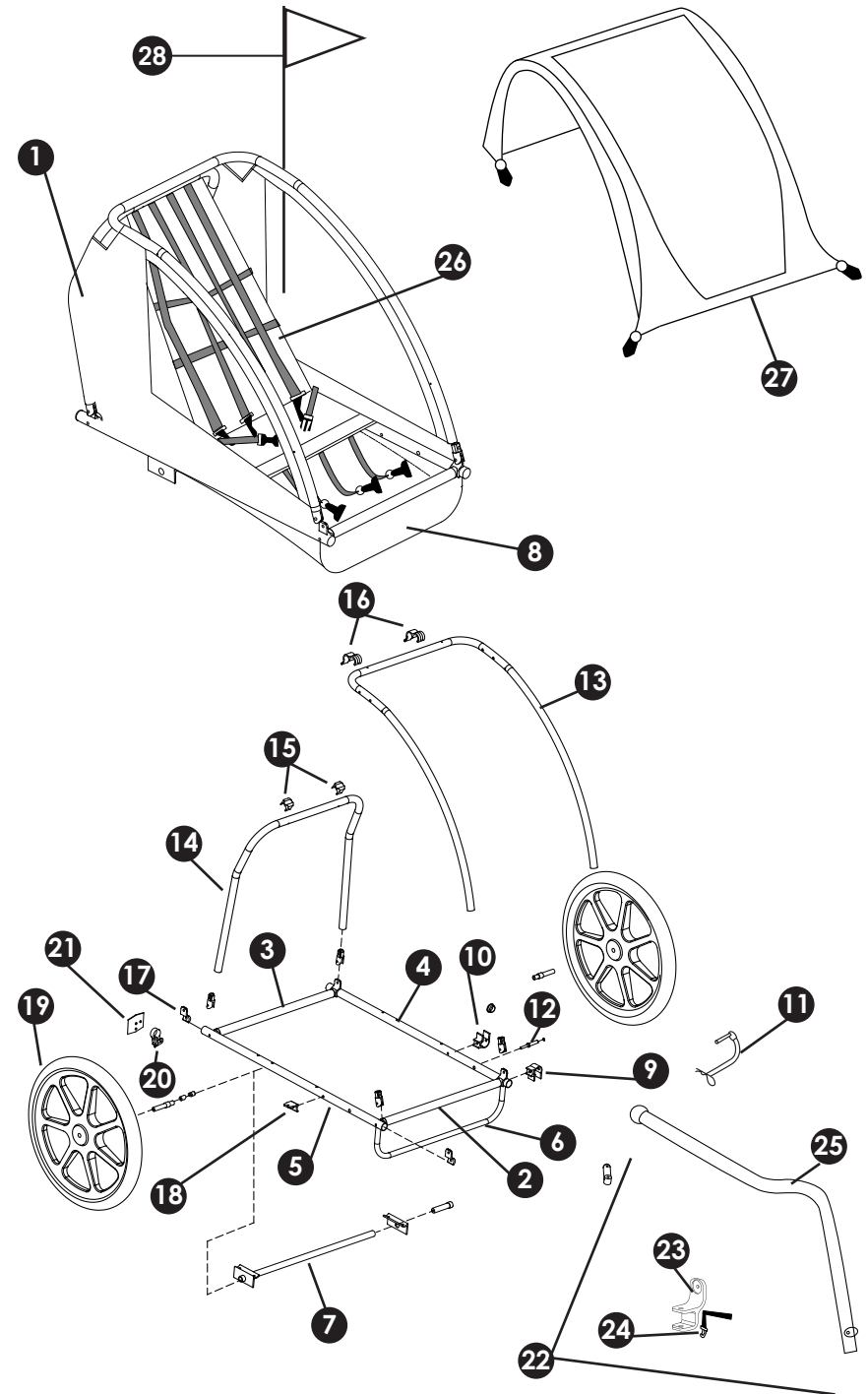
1. (1) Polyurethane Shell
 2. (2) Front Reflector (clear)
 3. (2) Rear Reflector (red)
 4. (2) Suspension Elastomer
 5. (1) Pair Side Panel Hold Down (left and right)
 6. (1) Tongue Retaining Pin
 7. (1) Pair Tongue Receptacle (front and rear)
 8. (1) Safety Pin & Tether
 9. (1) Front Roll Bar, 7/8" Aluminum Tube
 10. (2) Frame Locks
 11. (2) Front Roll-Bar Hinge (aluminum)
 12. (1) Rear Roll bar, 7/8" Aluminum Tube
 13. (2) Rear Roll Bar Hinge (aluminum)
 14. (2) Roll Bar Saddle (plastic)
 15. (1) Tongue and Hitch Assembly
 16. (1) Tongue, 1 1/8" Square Aluminum
 17. (1) Hitch
 18. (1) Hitch Safety Strap
 19. (1) Clip & D-Ring
 20. (1) Rubber Flex Connector (not available without hitch)
 21. (1) Pair Fabric Side-panel Assembly, with Vinyl Windows
 22. (1) Seat pad
 23. (2) Shoulder Pads
 24. (1) Flow-Thru Seat Back with Harness
 25. (4) Shoulder Strap
 26. (3) Crotch Strap
 27. (1) Lap Belt
 28. (1) Buckle for Lap Belt
 29. (2) Wheel, Each with (2) Wheel Bearing
 30. (2) Wheel Reflector (clear)
 31. (1) Swing Arm Assembly
 32. (2) Hollow Axle
 33. (2) Wheel Axle Assembly
 34. (2) Quick-Release Lever
 35. (1) Safety Flag
 36. (1) Big Screen 2-in-1 Cover
 37. (1) Adjustable Sunscreen
- Options (at additional cost):**
- European Roll Bar (not shown)
 - Stroller Kit (not shown)
 - Trailer Storage Cover (not shown)



Bee™ Parts List & Diagram

Note: Subassemblies are indented (contact Burley about parts not listed).

1. (1) Preassembled Main Frame Assembly
2. (1) Front Main Frame, 1" Aluminum Tube
3. (1) Rear Main Frame, 1" Aluminum Tube
4. (1) Left Frame, 1" Aluminum Tube
5. (1) Right Frame, 1" Aluminum Tube
6. (1) Bag Holder, 1/2" Aluminum Tube
7. (1) Axle Assembly
8. (1) Fabric Bottom Bag and Side Panel Assembly
9. (1) Front tongue receptacle, Plastic
10. (1) Rear tongue receptacle, Plastic
11. (1) Lanyard w/ Lock Pin & Hairpin Cotter to Hold Tongue
12. (1) Pivot Pin for Tongue
13. (1) Front Roll Bar, 7/8" Aluminum Tube
14. (1) Rear Roll Bar, 7/8" Aluminum Tube
15. (2) Rear Roll Bar Saddle, Plastic
16. (2) Frame Locks, Aluminum
17. (4) Hinge Plates, Aluminum
18. (1) Wheel Guard, Aluminum
19. (2) Wheel, Tire, & Tube Assembly
20. (2) Rear Reflector Bracket
21. (2) Red Rear Reflector
22. (1) Tongue Assembly
23. (1) Hitch
24. (1) Safety Strap
25. (1) Tongue, 1 1/8" Aluminum Tube
26. (1) Mesh Seat with 5-point Restraint System
27. (1) Big Screen 2-in-1 Cover
28. (1) Safety Flag



Burley Trailer Limited Warranty

Burley will repair or replace parts it determines to be defective as follows: fabric parts for one year, plastic parts for five years and durable frame parts for the lifetime of the trailer. The owner of a Burley trailer must present the trailer for repair at an Authorized Burley Dealer, together with an original sales receipt or similar proof of purchase. This warranty applies only to the original owner and is nontransferable. Burley can not be responsible for failure due to improper assembly, modification of parts or instructions, neglect, abuse, accident, and/or normal wear. The warranty does not cover any trailer used for rental, competition, or commercial use.

Burley neither assumes nor authorizes any person to assume any other liability in connection with Burley product, and there are no oral agreements or warranties collateral to or affecting this agreement.

This warranty gives you specific legal rights and you may also have other rights which vary from state to state.

BURLEY®

Copyright ©2007 by Burley Design, LLC

“Burley” is a registered trademark of Burley Design LLC

Burley Design, LLC • 4020 Stewart Rd • Eugene, OR 97402

541.687.1644 • Fax 541.687.0436 • www.burley.com