

GRAVELY Service Bulletin

Ariens Company
 655 W. Ryan St.
 Brillion, WI 54110
 www.ariens.com

Product Family: Pro-Turn 400 Series Mowers

Subject: Air Ride Seat 04383700

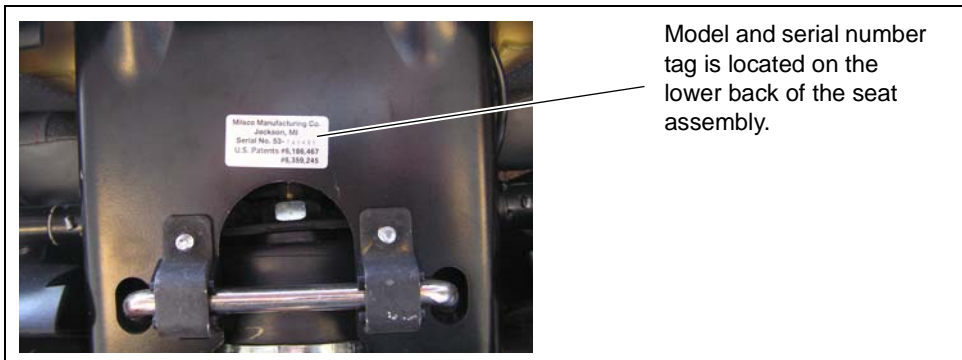
Dealer Action: Inspect and Correct as Necessary

Model	Description	Serial Number Range
992230	Pro-Turn 452	101 – 2005
992231	Pro-Turn 452	101 – 187
992232	Pro-Turn 460	101 – 204
992233	Pro-Turn 460	101 – 2020
992234	Pro-Turn 460	101 – 412
992235	Pro-Turn 460	101 – 2088
992236	Pro-Turn 460 Diesel	101 – 2059
992238	Pro-Turn 466	101 – 4053
992239	Pro-Turn 472	101 – 4053
992240	Pro-Turn 472 Diesel	101 – 2038

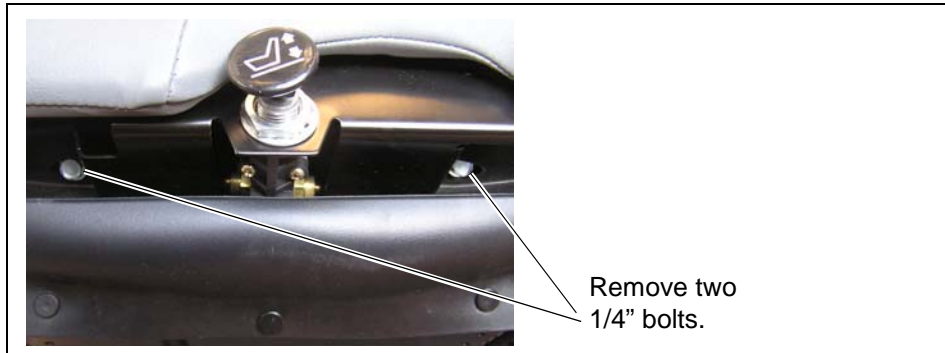
Ariens Company has discovered that push nuts used in the manufacture of air ride seats p/n 04383700 may not have been properly seated. In some cases, improperly seated push nuts have come off, allowing control arms attached to the air-spring saddle to come loose leading to the saddle bending and damaging the air-spring bellows.

Dealers are to inspect all unsold inventory in the model and serial number range listed above and correct if necessary.

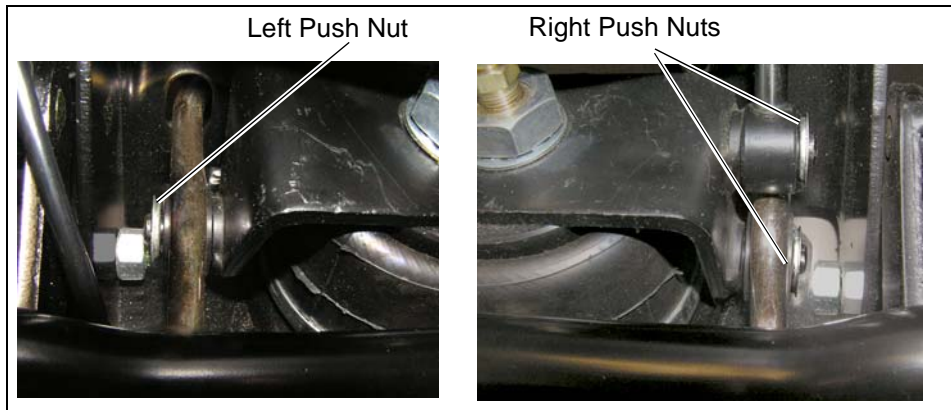
1. Check the Milsko serial number of the seat on an affected unit. If the serial number of the seat is above 53-798950 then it is not necessary to do any further inspection.



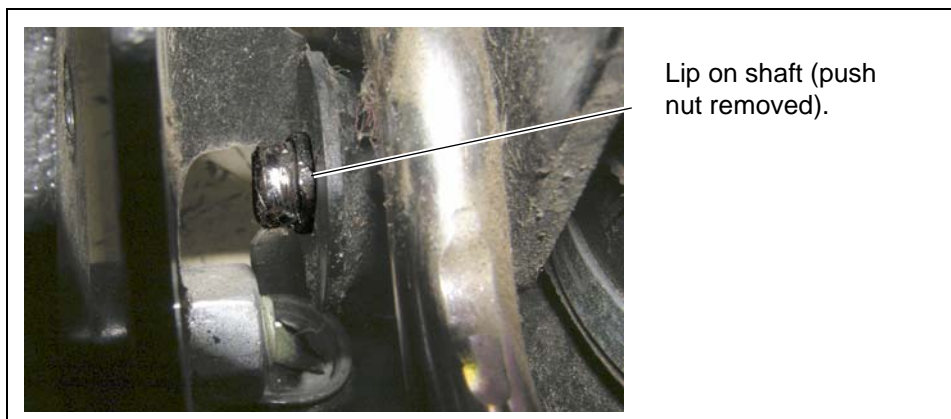
2. If the Milsco serial number is 53-798950 or below, remove the lower seat cushion. Remove two 1/4-20 bolts under the front of the cushion. Pull cushion up and forward to remove.



3. Inspect the three push nuts holding the arms to the air-spring saddle. One is found on the left side and two are on the right side.



4. If the push nuts are not seated properly, use a forked pry bar or screw driver to push the nut into the correct position.
5. Properly seated, the push nut will be pressed against the lip on the shaft. The following photograph shows the lip with the push nut removed.



If a damaged air-spring bellows or saddle is found, the saddle assembly can be replaced using Air Spring and Saddle Kit p/n 59212300.

Standard warranty applies. Dealers will be reimbursed .25 hour for each seat inspected by removing the cushion. For more information, contact Gravelly Technical Service at (920) 756-4688.