

# Ariens

# 912

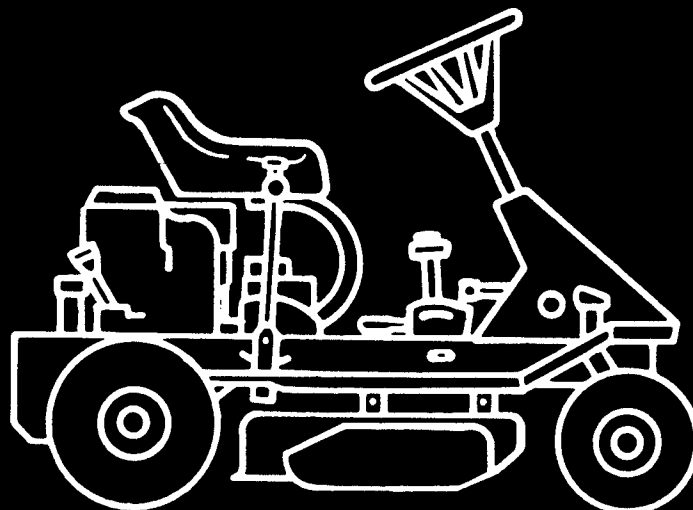
Series

**▲ SAFETY MESSAGE ▲**

The product for which you have requested information or replacement parts is not a current product. The replacement models incorporate product designs, safety features, safety instructions or warnings which represent the latest "State Of The Art" developments. For your safety and those around you please contact your nearest Ariens/Gravely Dealer for a demonstration of the current product safety provisions and features.

Riding Mower

# Parts Manual



Ariens

# A Message to Ariens Parts Manual User

Your Ariens Dealer will be happy to supply any service or advice which may be required to keep your Ariens equipment operating at peak efficiency. He stocks genuine Ariens parts and lubricants, manufactured with the same precision and skill as the original equipment. His factory trained staff is kept well informed on the best methods of servicing Ariens equipment and is ready and able to serve you. If

engine repairs or services are required, they can be obtained from an Ariens Dealer or from an authorized engine manufacturer's service center. If service is required, be prepared to supply the service person with the Model Number and Serial Number of the equipment and engine, as well as a full description of the problem encountered.

## Introduction

The information contained herein is intended for use by Ariens Dealers' trained servicemen and serves as a supplement to and reminder of training sessions conducted by Ariens Company. Before you attempt any repair, adjustment or maintenance project, be certain that you have read and fully understand the instructions in your Owner's and Repair Manuals. Understand and follow each Danger, Warning, Caution and all instructions exactly as given. Also be sure that you have all tools, replacement parts and other materials required to complete the project.

A network of Ariens Dealers and Distributors is maintained in order to assure you of an adequate supply of replacement parts and technical assistance. Your local Ariens Dealer is required to order parts through his distributor. When replacement parts are required, use only genuine Ariens parts. Failure to do so may result in product malfunction and possible injury to operator and/or bystander.

**NOTE:** All references to "Left", "Right", "Front" and "Back" are given from operators position.

**NOTE:** The descriptions and specifications contained in this manual were in effect at the time the manual was approved for printing. Ariens Company reserves the right to discontinue models without notice and without incurring obligation. The equipment described within this manual may not be identified as either standard or optional and the various illustrations may not all be applicable to your particular unit. If you have questions, always check with your Ariens Dealer.

**NOTE TO ARIENS DEALERS:** Refer to your current Parts Price List for suggested parts stocking. Service training for dealers is available at the Ariens Service School. See your Ariens Distributor for the latest school schedule.

# Contents

# Model

Decals .....	2
Electrical .....	4
Frame and Seat .....	8
Steering and Front Axle .....	10
Clutch and Brake .....	12
Speed Selector .....	14
Friction Drive and Rear Axle .....	16
Engine and Traction Drive .....	18
Rotary Mower Linkage .....	20
Rotary Mower .....	22
Bagger .....	24
Front Weight .....	25
28" Flange Assembly .....	26

**Model 912010 (FM26) — 6 H.P.**  
Tecumseh Recoil w/26" Mower  
Serial No. 000101 and up

**Model 912011 (FM26e) — 6 H.P.**  
Tecumseh Electric w/26" Mower  
Serial No. 000101 and up

**Model 912012 (FM28e) — 8 H.P.**  
Tecumseh Electric w/28" Mower  
Serial No. 000101 and up

**Model 812004 — 26" Bagger Vac**

**Model 812005 — 28" Bagger Vac**

This manual covers the models listed. Specific Model and Serial Numbers of your unit and attachment are on a label on the unit. Record these numbers in the space provided and use them whenever parts or service are required.

<b>Mower Model Number</b> _____
<b>Serial Number</b> _____
<b>Attachment Model Number</b> _____
<b>Serial Number</b> _____

## How To Order Replacement Parts

This Parts Manual is arranged for easy identification of genuine Ariens Service parts that are illustrated showing their relationship to one another. Item numbers in the illustrations correspond to Item numbers in the first column of the parts list and are followed by the Ariens Part Number, Description and Quantity with variations between models and/or serial numbers designated in the part description. S/N 000000 means this serial number and up, with S/N <000000 meaning up to this serial number.

Order parts from your nearest authorized Ariens Dealer. For prompt service when ordering parts, provide the following information.

- 1. MODEL AND SERIAL NUMBERS OF EQUIPMENT.**
- 2. PART NUMBER (not Item Number)**
- 3. DESCRIPTION**
- 4. QUANTITY REQUIRED**

<b>⚠ WARNING</b>	
<b>LOSS OF CONTROL MAY RESULT</b>	<b>OBJECTS MAY BE THROWN</b>
<ul style="list-style-type: none"> <li>• Tipover or complete loss of steering may result from a combination of excessive bagger load, operation on slopes and abrupt turns or speed changes.</li> <li>• When operating on slopes, optional front weight is required.</li> </ul>	<ul style="list-style-type: none"> <li>• Stop blade rotation (Mower Clutch Out) before opening cover.</li> <li>• Check bagger components for structural damage, wear or deterioration before each usage. Replace only with Ariens original service parts.</li> </ul>


077917

<b>Ariens</b>
<b>Bagger-Vac™</b>




077965

**Ariens**


077945

<b>⚠ DANGER</b>

<p><b>ROTATING BLADE</b></p> <ul style="list-style-type: none"> <li>• Keep hands &amp; feet away.</li> <li>• Stop engine &amp; remove ignition key before clearing.</li> </ul>

077987

<b>CAUTION</b>	
	<ul style="list-style-type: none"> <li>• Read operators manual</li> <li>• Keep shields in place</li> <li>• Keep people and pets away</li> </ul>
	<p><b>GO</b></p> <ul style="list-style-type: none"> <li>• Release parking brake</li> <li>• Depress clutch pedal</li> <li>• Shift to 1st or 2nd speed</li> <li>• Slowly release clutch</li> <li>• Shift to desired speed</li> </ul>
	<p><b>STOP</b></p> <ul style="list-style-type: none"> <li>• Depress clutch pedal</li> <li>• Depress Brake pedal</li> <li>• Before leaving operator's position: Shift to neutral Engage parking brake Disengage mower clutch Stop Engine Remove ignition key</li> </ul>
	<p><b>SERVICING</b></p> <ul style="list-style-type: none"> <li>• Wait for all movement to stop</li> <li>• Disconnect spark plug wire</li> <li>• Before tipping unit, drain gas tank and remove battery—if electric</li> </ul>

077949

	<b>Mower</b>	
In		Out

077947

<b>REV</b>	<b>N</b>	<b>1</b>	<b>2</b>	<b>3</b>	<b>4</b>
------------	----------	----------	----------	----------	----------

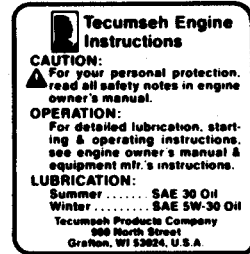
078018

# Decals

Models 912010,11,12



078209

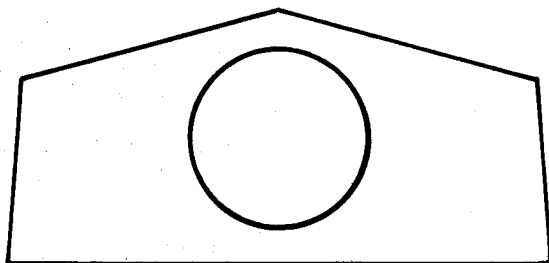


078609



Do not operate mower unless mower guards are in operating position or grass bagger is attached.

078937



078293



STOP ENGINE BEFORE REMOVING TUBE, BOOT OR PLACING HAND INSIDE. DO NOT RUN MOWER WITHOUT COMPLETE TUBE AND CATCHER IN PLACE.

078977A

078977



Before starting engine be sure machine is in neutral and mower clutch is disengaged.

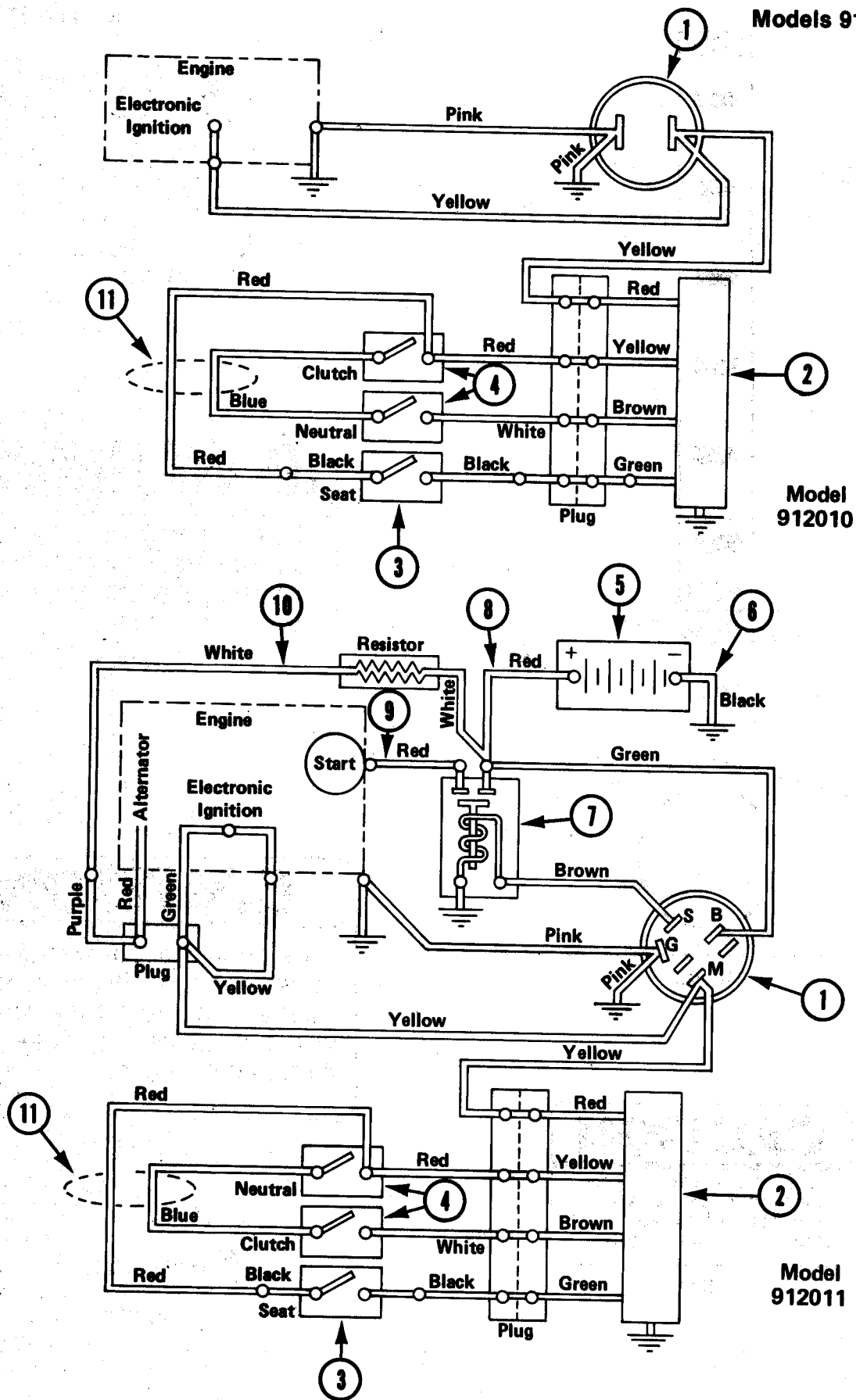
078558

FLEX-N-FLOAT

078771

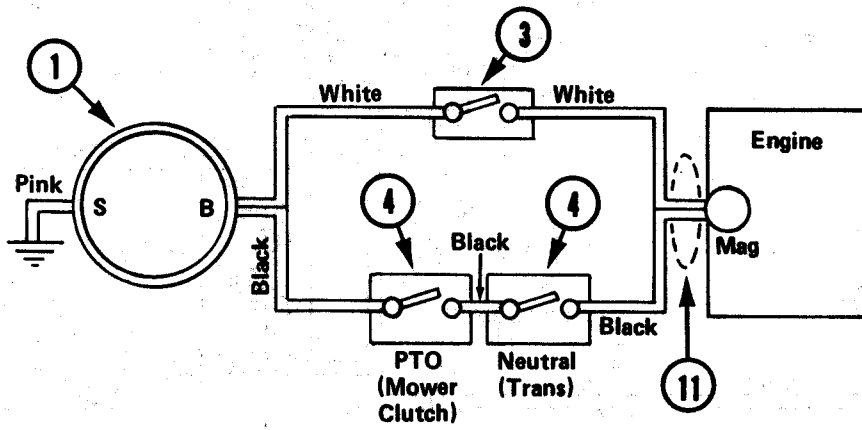
# Electrical

Models 912010,11,12

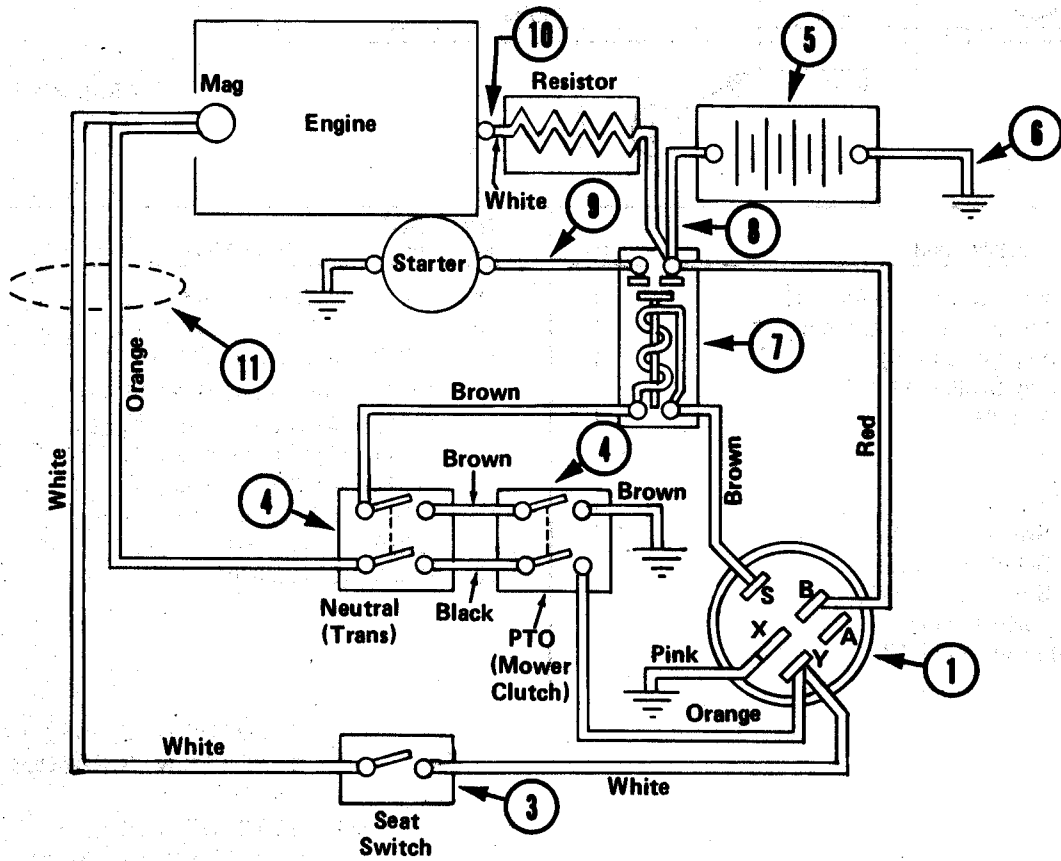


# Electrical

Models 912010,11,12



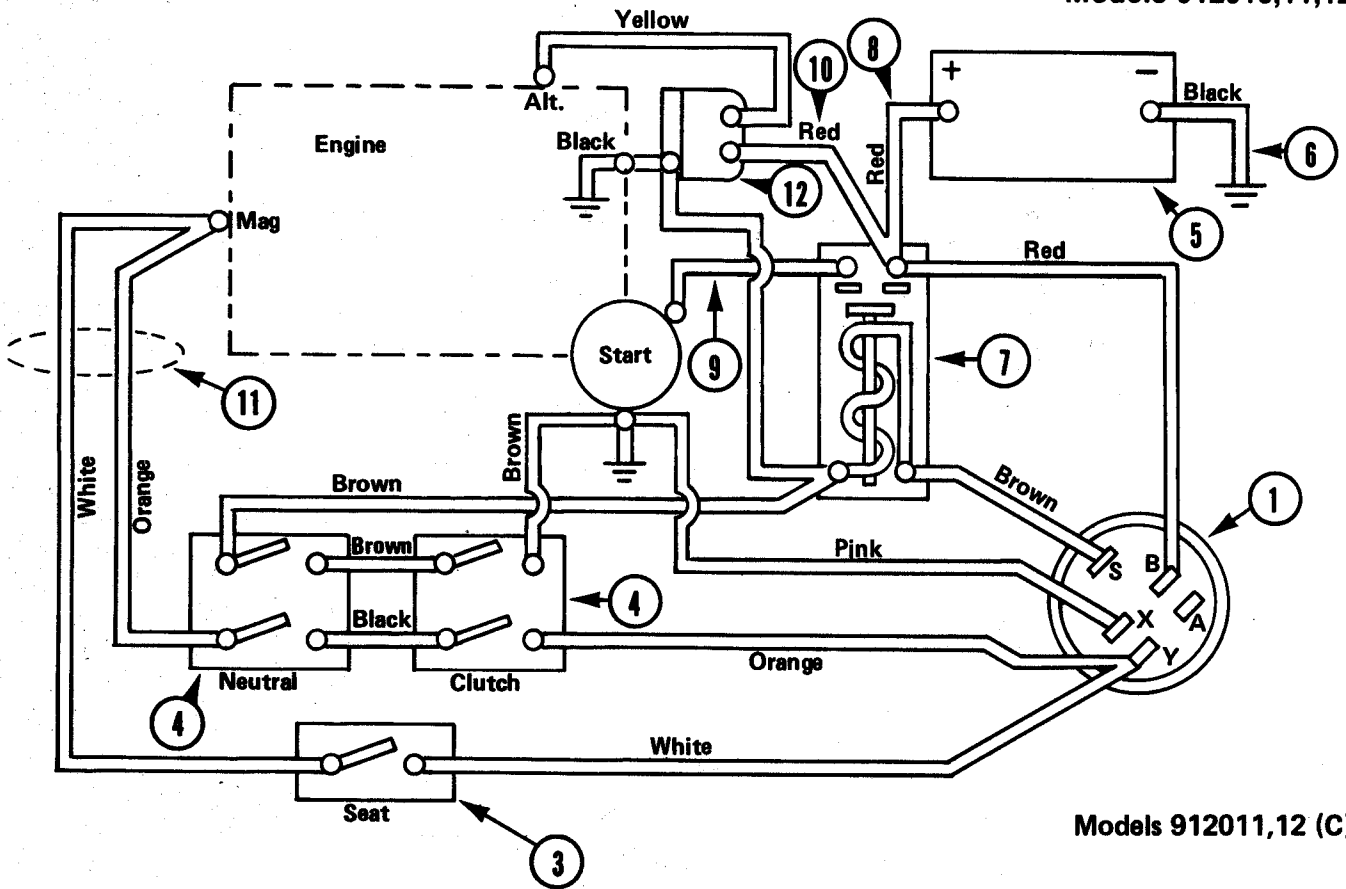
Model 912010 (B)



Models 912011, 12 (B)

# Electrical

Models 912010,11,12



Models 912011,12 (C)

ITEM NO	PART NO	DESCRIPTION	QTY	ITEM NO	PART NO	DESCRIPTION	QTY
1	24565	(A)Key Switch Assembly (10)	1	8	1459	Starter Cable (11)	1
	27396	(A)Ignition Switch Assembly (11)	1	9	35576	Starter Cable (11,12)	2
	12353	(B)Key Switch (10)	1	10	27213	(A)Charging Wire (11)	1
	12341	(B)Key Switch (11,12)	1		12340	(B)Charging Wire (11,12)	1
2	27398	(A)Module	1	11	12310	(A)Wire Harness (10)	1
3	31716	Seat Switch	1		12311	(A)Wire Harness (11)	1
4	25172	(A)Switch	1		12342	(B)Wire Harness (10)	1
	12369	(B)Switch (10)	1		12343	(B)Wire Harness (11,12)	1
	12371	(B)Switch (11,12)	1		12386	(C)Wire Harness (11,12)	1
5	25129	Battery (11,12)	1	12	12385	(C)Regulator	1
6	27393	Ground Cable (11)	1				
7	30577	(A)Solenoid (11)	1				
	35510	(B)Solenoid (11,12)	1				

(A) 912010S/N <005000  
912011S/N <008600

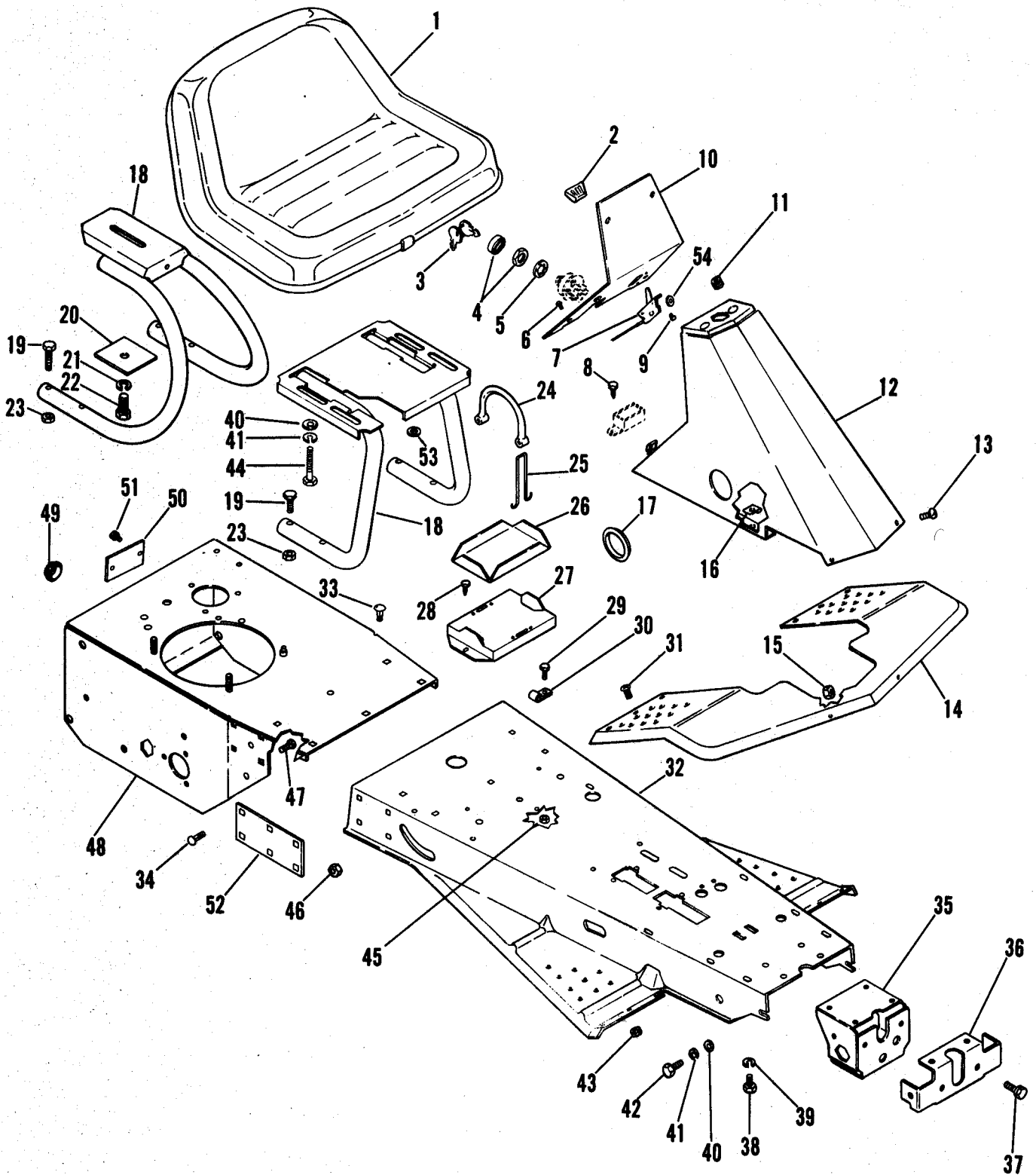
(B) 912010S/N 005001>  
912011S/N 008601>  
912012S/N 000101>

(C) 912011S/N 010224>  
912012S/N 001647>



# Frame and Seat

Models 912010,11,12



# Frame and Seat

Models 912010,11,12

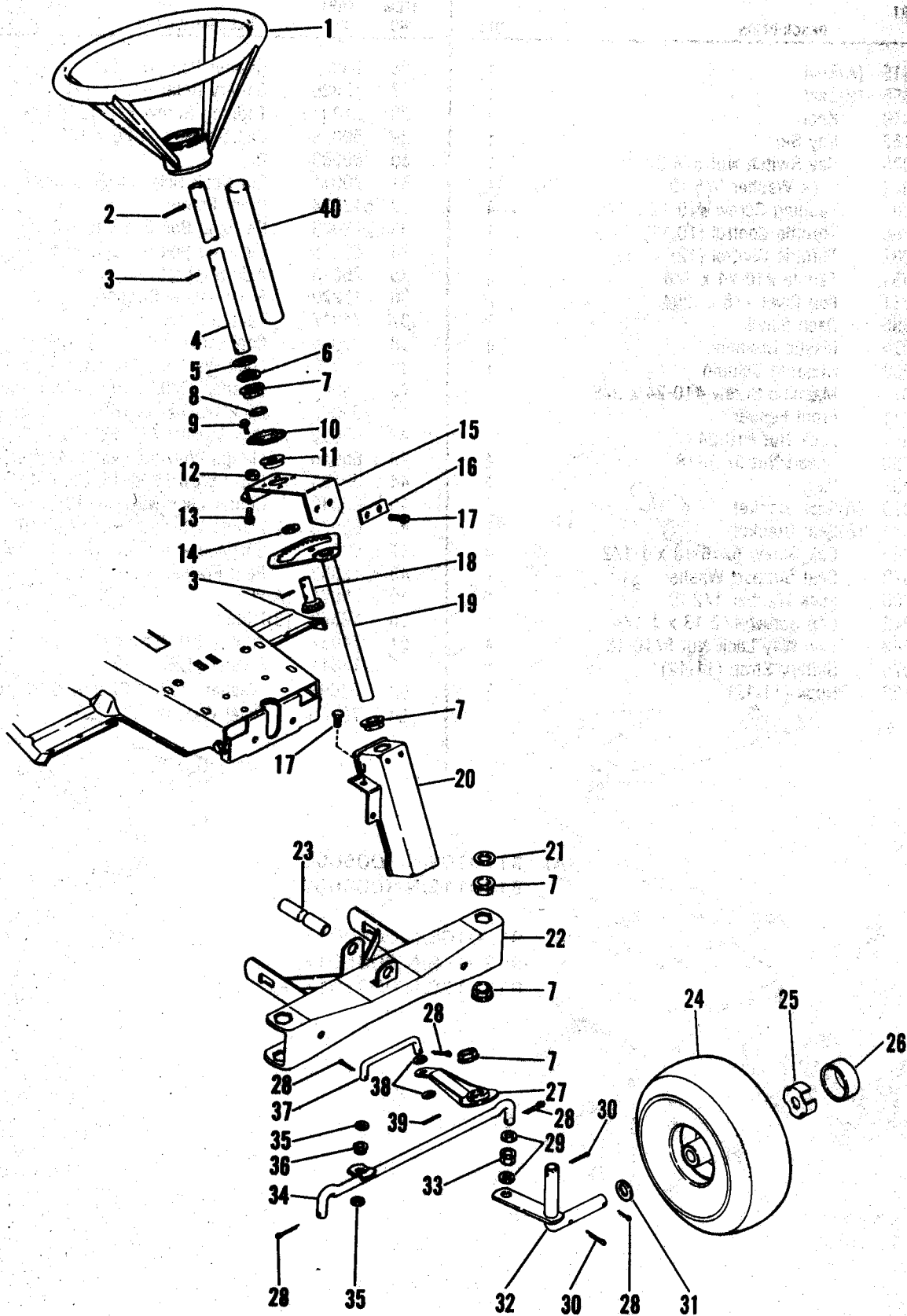
ITEM NO	PART NO	DESCRIPTION	QTY	ITEM NO	PART NO	DESCRIPTION	QTY
1	12315	(A)Seat	1	26	25307	Rubber Pad (11,12)	1
	12356	(B)Seat	1	27	12236	Battery Retainer (11,12)	1
2	75019	Knob	1	28	74001	Tapping Screw #10-12 x 1/2	2
3	13157	Key Set	1	29	59028	Cap Screw 1/4-20 x 1/2	2
4	65075	Key Switch Nut 5/8-32	1	30	69083	Clip	2
5	63019	Lock Washer 5/8 ID	1	31	70011	Rib Neck Bolt 1/4-20 x 5/8	6
6	74001	Tapping Screw #10-12 x 1/2	4	32	512024	Front Frame	1
7	69088	Throttle Control (10,11)	1	33	62009	Carriage Bolt 5/16-18 x 1/2	3
	69087	Throttle Control (12)	1	34	62015	Carriage Bolt 5/16-18 x 1"	2
8	74054	Taptite #10-24 x 3/8	2	35	26016	Axle Support	1
9	68031	Pop Rivet 1/8 x .294	2	36	12220	Front Frame Support	1
10	12365	Dash Panel	1	37	74017	Taptite 5/16-18 x1/2	6
11	75076	Plastic Grommet	4	38	70086	Cap Screw 5/16-18 x 7/8	4
12	12232	Steering Column	1	39	63018	Lock Washer 5/16 ID	4
13	61014	Machine Screw #10-24 x 3/8	2	40	64002	Washer .370/ .390 x .875 x .083	6
14	26011	Front Fender	1	41	63003	Lock Washer 5/16 ID	6
15	65041	Lock Nut #10-24	2	42	59022	Cap Screw 5/16-18 x 3/4	2
16	65088	Speed Nut 5/16-18	4	43	65056	Flange Whizlock Nut 1/4-20	6
17	75033	Plug	1	44	59135	Cap Screw 5/16-18 x 2-1/4 Gr 5	4
18	12070	(A)Seat Bracket	1	45	65040	Center Lock Nut 1/4-20	4
	12354	(B)Seat Bracket	1	46	65078	Flange Whizlock Nut 5/16-18	15
19	59045	Cap Screw 5/16-18 x 1-1/2	4	47	62011	Carriage Bolt 5/16-18 x 3/4	10
20	12079	Seat Support Washer	1	48	12352	Rear Frame	1
21	63006	Lock Washer 1/2 ID	1	49	75084	(A)Plug	1
22	59042	Cap Screw 1/2-13 x 1-1/4	1	50	12373	(B)Plate	1
23	65042	Two Way Lock Nut 5/16-18	4	51	74037	Taptite #10-24 x 1/2	2
24	75075	Battery Strap (11,12)	1	52	12344	Spacer (12)	2
25	25152	Hook (11,12)	2	53	64099	Washer .307/ .327 x 1.625 x 10 Ga.	2
				54	70105	Rivet Washer	2

(A) 912010S/N <005000  
912011S/N <008600

(B) 912010S/N 005001>  
912011S/N 008601>  
912012S/N 000101>

# Steering and Front Axle

Models 912010,11,12



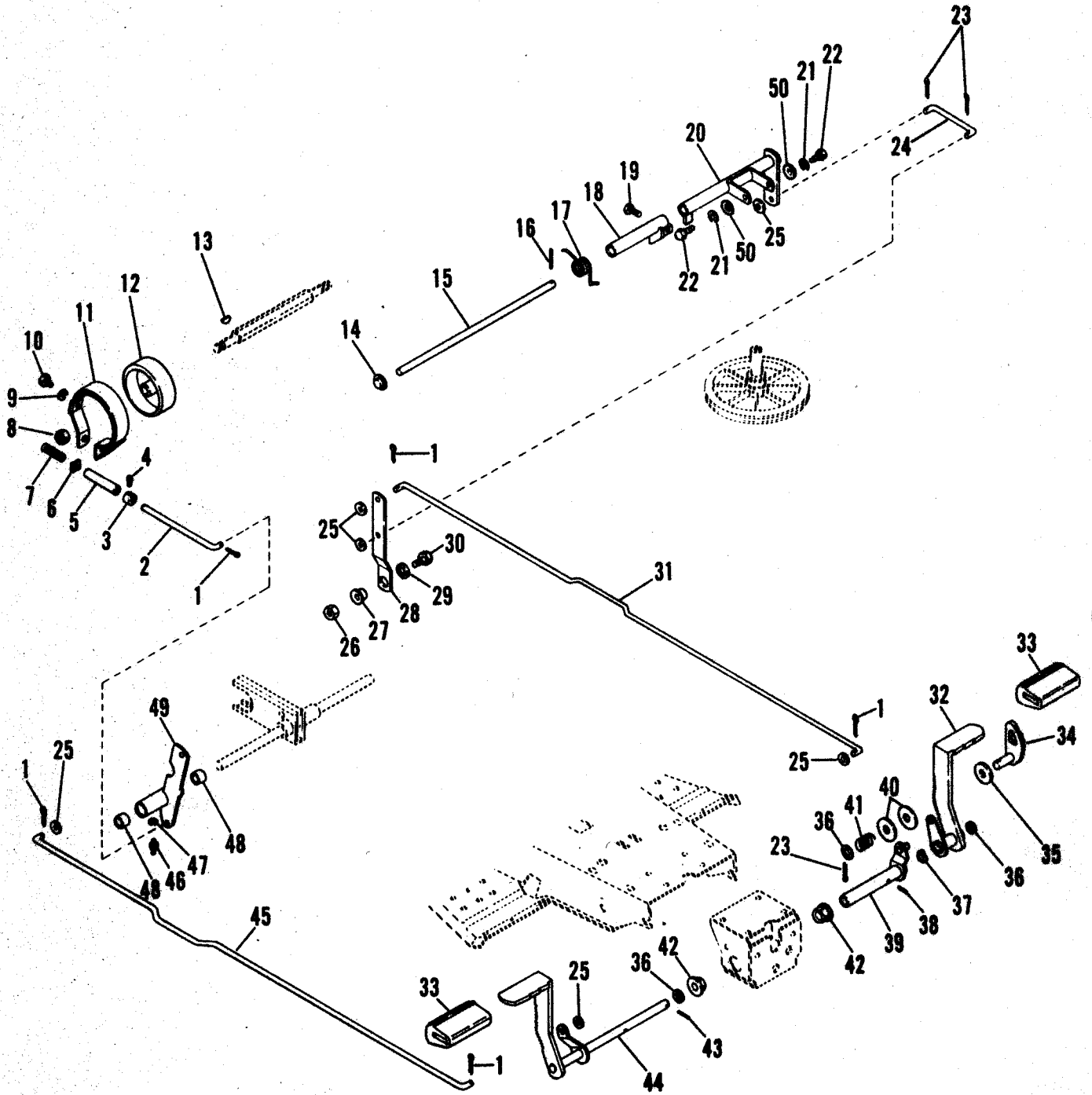
# Steering and Front Axle

Models 912010,11,12

ITEM NO	PART NO	DESCRIPTION	QTY	ITEM NO	PART NO	DESCRIPTION	QTY
1	27136	Steering Wheel	1	25	12382	Spindle Cup	2
2	58037	Roll Pin 1/4 x 1-3/4	1	26	3377	Hub Cap	2
3	58016	Roll Pin 3/16 x 1''	3	27	26039	Steering Arm	1
4	12226	Steering Shaft	1	28	67004	Cotter Pin 1/8 x 1''	6
5	64048	Washer .750/.760 x 1.375 x .062	1	29	64038	Washer .500/.510 x .875 x 24GA.	4
6	3328	Spring Washer	1	30	67014	Cotter Pin 1/8 x 1-1/4	2
7	12128	Flange Bushing	7	31	25120	Spindle Washer	2
8	12225	Push Nut	1	32	12317	R.H. Wheel Spindle	1
9	74021	Taptite #10-24 x 1/4	4		27354	L.H. Wheel Spindle	1
10	13100	Retaining Plate	1	33	55037	Flange Bushing 1/2 x 5/8 x 5/16	2
11	55053	Flange Bushing 5/8 x 1-5/32 x 3/8	1	34	12105	Tie Rod	1
12	65042	Two Way Lock Nut 5/16-18	2	35	64078	Washer .379/.389 x .626 x 21GA.	2
13	62009	Carriage Bolt 5/16-18 x 1/2	2	36	55036	Flange Bushing 3/8 x 1/2 x 5/16	1
14	64039	Washer .625/.635 x 1.005 x .062	1	37	12228	Steering Link	1
15	26036	Steering Support	1	38	64073	Washer .406 x .865 x .094	2
16	26075	Shim	4	39	58045	Groove Pin 3/16 x 1-1/4	1
17	74017	Taptite 5/16-18 x 3/4	2	40	12333	Tube	1
18	25064	Steering Pinion	1				
19	26037	Steering Gear	1				
20	26038	Steering Box	1				
21	64048	Washer .750/.760 x 1.375 x .062	2				
22	26015	Front Axle	1				
23	26017	Axle Pivot Pin	1				
24	71162	Turf Saver Tire & Wheel	2				
	71080	Turf Saver Tire 4 x 4.10/3.5	2				
	71230	Turf Mate Tire & Wheel	2				
	71207	Turf Mate Tire	2				
	71083	Rim 4 x 3.5	2				
	71231	Plastic Rim	2				
	71085	Inner Tube 4 x 4.10/3.5	2				
	55058	Flange Bushing 3/4 x 1-3/8 x 3/4	4				
	12152	Zerk Fitting	2				

# Clutch and Brake

Models 912010,11,12



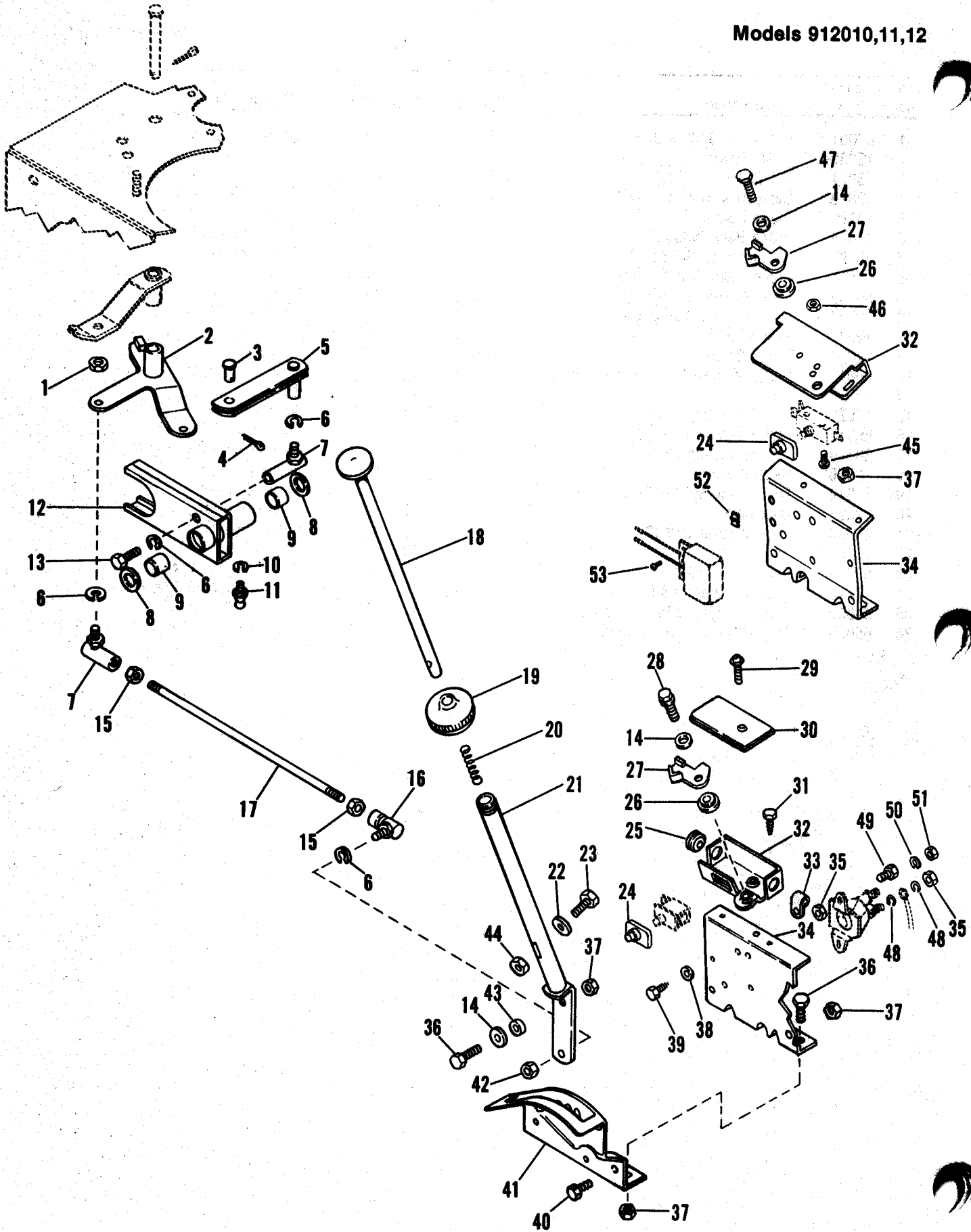
# Clutch and Brake

Models 912010,11,12

ITEM NO	PART NO	DESCRIPTION	QTY	ITEM NO	PART NO	DESCRIPTION	QTY
1	67001	Cotter Pin 3/32 x 3/4	5	27	2069	Shoulder Spacer	1
2	12032	Brake Rod	1	28	12212	Clutch Link Bar	1
3	3074	Set Collar	1	29	64039	Washer .625/.635 x 1.005 x .062	1
4	60018	Set Screw 1/4-20 x 1/2	1	30	59023	Cap Screw 3/8-16 x 3/4	1
5	12196	Brake Spacer	1	31	12195	Clutch Rod (10,11)	1
6	12074	Brake Band Washer	1		12346	Clutch Rod (12)	1
7	83091	Compression Spring	1	32	26018	Clutch Brake Lever	1
8	65054	Center Lock Nut 1/2-20	1	33	75029	Pedal Cover	2
9	63003	Lock Washer 5/16 ID	1	34	12254	Brake Latch	1
10	59039	Cap Screw 5/16-18 x 1/2	1	35	64047	Washer .506/.516 x 1.441 x .125	1
11	12033	Brake Band	1	36	64038	Washer .500/.510 x .875 x 24GA.	3
12	12026	Brake Drum	1	37	3254	Wave Washer	1
13	66015	Woodruff Key 1/8 x 5/8 x 1/4	1	38	58005	Roll Pin 3/16 x 7/8	1
14	12086	Cap	1	39	26020	Clutch Brake Lever	1
15	12039	Disc Fork Rod	1	40	64138	Washer .526/.546 x 1.441 x .1	3
16	58016	Roll Pin 3/16 x 1"	1	41	83120	Compression Spring	1
17	83170	Torsion Spring	1	42	12128	Flange Bushing	2
18	12300	Neutral Stop	1	43	58009	Roll Pin 1/8 x 1"	1
19	70014	Cap Screw Spl 5/16-18 x 3/4	1	44	26019	Brake Lever	1
20	12301	Disk Fork	1	45	12200	Brake Rod (10,11)	1
21	63004	Lock Washer 3/8 ID	2		12347	Brake Rod (12)	1
22	10522	Screw Pin	2	46	22093	Zerk Fitting	1
23	67004	Cotter Pin 1/8 x 1"	3	47	63025	Lock Washer 1/4 ID	1
24	12213	Clutch Linkage Rod	1	48	55047	Sleeve Bushing 5/8 x 3/4 x 1/2	2
25	64052	Washer .380/.385 x .812 x 24GA.	4	49	512003	Brake Bell Crank	1
26	65039	Two Way Lock Nut 3/8-16	1	50	64002	Washer .370/.390 x .875 x .083	2

# Speed Selector

Models 912010,11,12



# Speed Selector

Models 912010,11,12

ITEM NO	PART NO	DESCRIPTION	QTY	ITEM NO	PART NO	DESCRIPTION	QTY
1	65115	Lock Nut 5/16-24	1	28	74017	(A)Taptite 5/16-18 x 3/4	1
2	12094	Shift Transfer Lever	1	29	74036	(A)Tapping Screw #12-14 x 1-1/4	1
3	12151	Clevis Pin	1	30	25176	(A)Cover	1
4	67001	Cotter Pin 3/32 x 3/4	1	31	74026	Taptite #10-24 x 3/8	2
5	12096	Shift Link	1	32	25174	(A)Switch Housing	1
6	63003	Lock Washer 5/16 ID	4		12339	(B)Switch Mount	1
7	3086	Ball Joint	2	33	25214	Clamp (11,12)	1
8	56034	Seal 5/8 ID	2	34	12289	(A)Switch Bracket (10)	1
9	55047	Sleeve Bushing 5/8 x 3/4 x 1/2	2		12288	(A)Switch Bracket (11)	1
10	63025	Lock Washer 1/4 ID	1		12387	(B)Switch Bracket	1
11	22093	Zerk Fitting	1	35	65040	Center Lock Nut 1/4-20	2
12	512017	Sliding Fork	1		65100	Jam Nut 5/16-24	2
13	59036	Cap Screw 5/16-24 x 1/2	1	36	59022	Cap Screw 5/16-18 x 3/4	3
14	64002	Washer .370/.390 x .875 x .083	3	37	65042	Two Way Lock Nut 5/16-18	6
15	65031	Nut 5/16-24	2	38	64001	Washer .245/.265 x .562 x .049	1
16	3060	Snap In Ball Joint	1	39	74009	Tapping Screw #10-16 x 1''	1
17	12172	Shift Link (10,11)	1	40	59039	Cap Screw 5/16-18 x 1/2	2
	12366	Shift Link (12)	1	41	12197	Shift Control Segment	1
18	3247	Shift Release Handle	1	42	65115	Lock Nut 5/16-24	1
19	10248	Shift Ball	1	43	6071	Spacer Bushing	1
20	83015	Compression Spring	1	44	65070	Top Lock Nut 1/4-20	1
21	3089	Shift Lever	1	45	61084	Machine Screw #6-32 x 1''	2
22	64037	Washer .281 x 1.250 x .062	1	46	65169	Keps Nut #6-32	2
23	59072	Cap Screw 1/4-20 x 1-1/4	1	47	59034	Cap Screw 5/16-18 x 7/8	1
24	75045	(A)Switch Boot	1	48	63018	Lock Washer 5/16 I.D.	4
	75172	(B)Switch Boot	1	49	59028	Cap Screw 1/4-20 x 1/2	2
25	75026	Grommet	1	50	63026	Lock Washer #10	2
26	13059	(A)Spacer	1	51	65026	Nut #10-32	2
27	25175	(A)Cam	1	52	65051	Keps Nut #10-24	2
				53	61014	Machine Screw #10-24 x 3/8	2

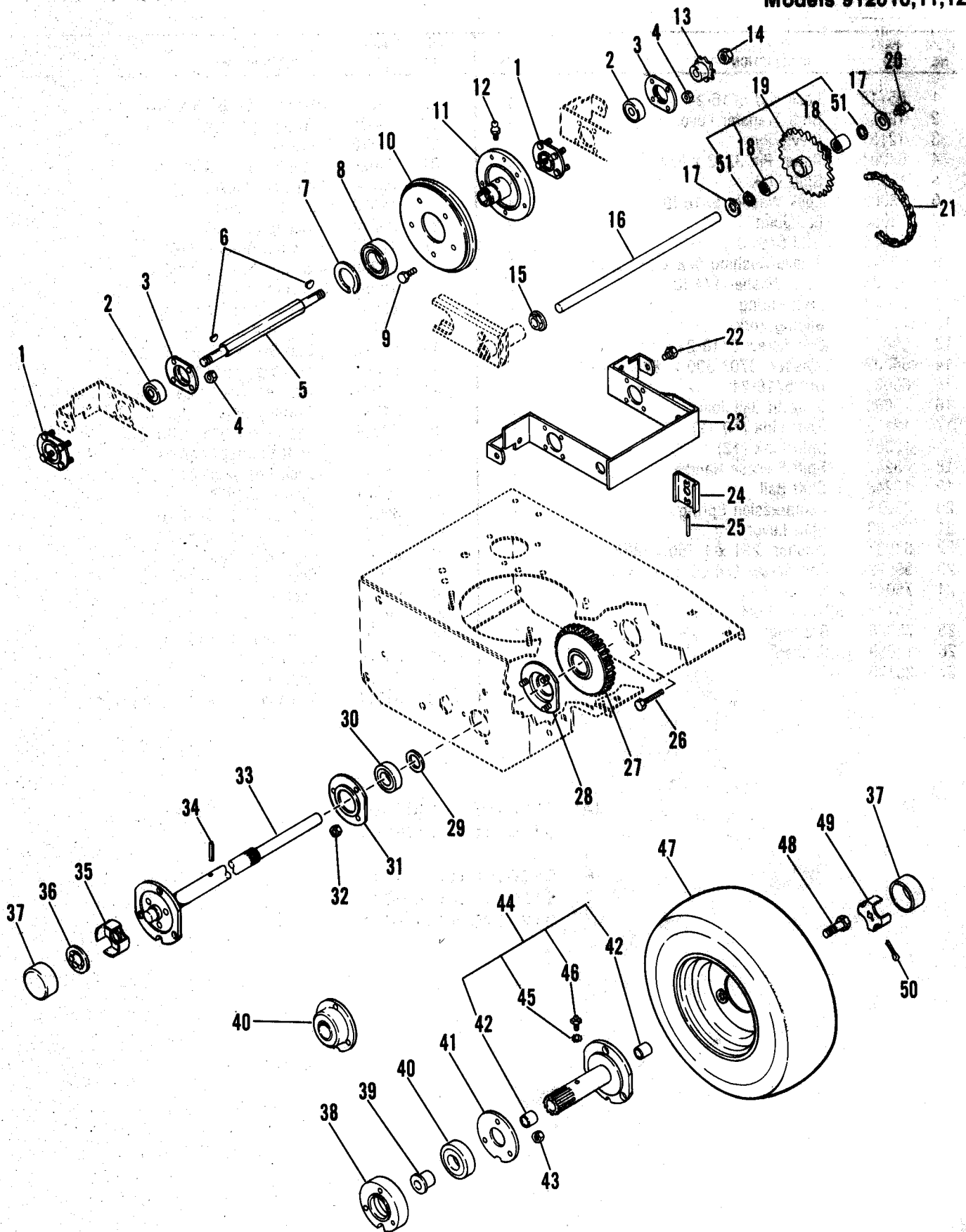
(A) 912010S/N <005000  
912011S/N <008600

(B) 912010S/N 005001>  
912011S/N 008601>  
912012S/N 000101>



# Friction Drive and Rear Axle

Models 912010,11,12



# Friction Drive and Rear Axle

Models 912010,11,12

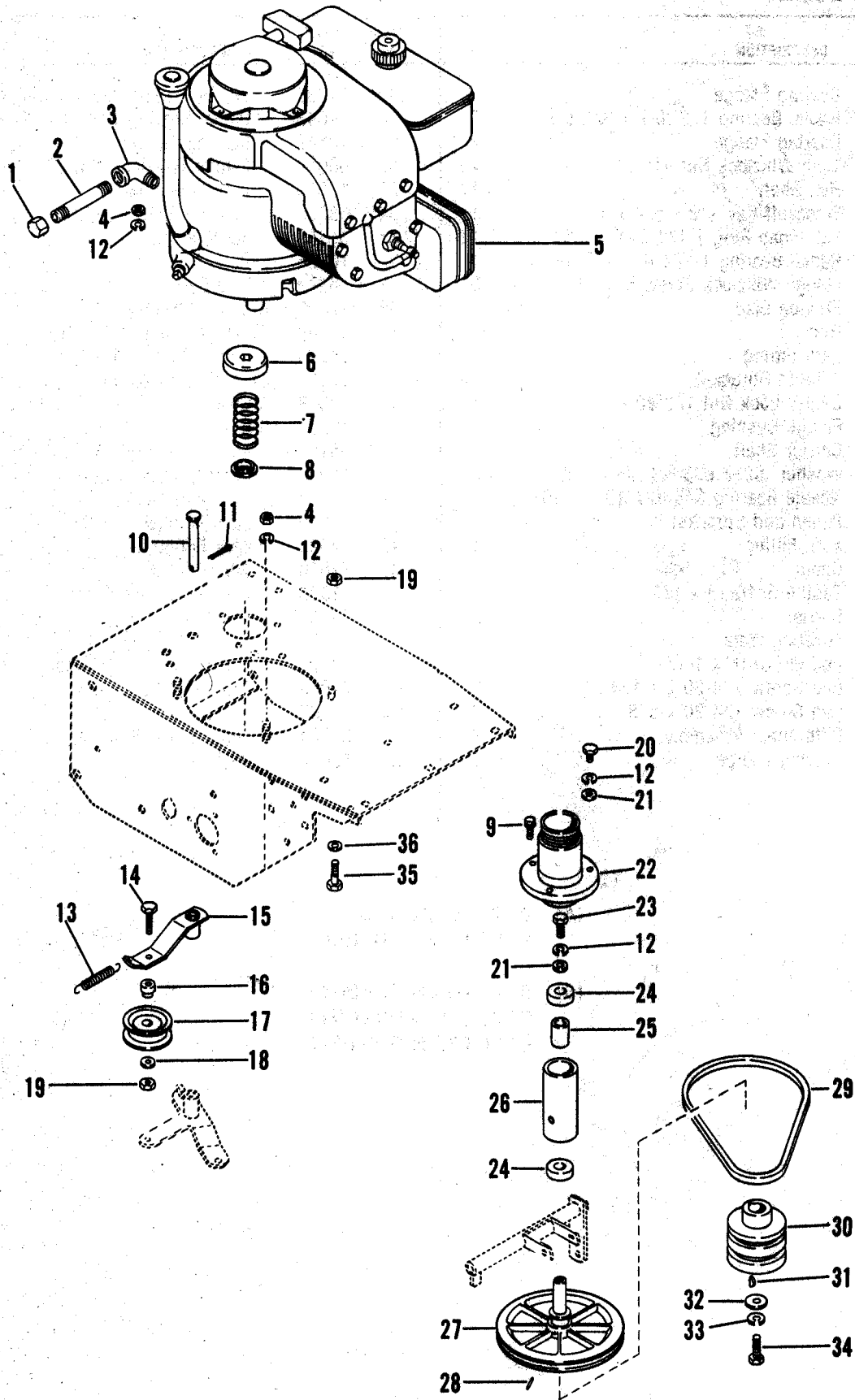
ITEM NO	PART NO	DESCRIPTION	QTY	ITEM NO	PART NO	DESCRIPTION	QTY
1	3085	Bearing Flange	2	29	64036	Washer .875/.885 x 1.380 x .062	1
2	54079	Radial Bearing 1/2 ID x 1-3/8 OD	2	30	54093	Radial Bearing 7/8 ID x 1-3/4 OD	1
3	3031	Bearing Flange	2	31	10142	Bearing Flange	1
4	65094	Twin Whizlock Nut #10-24	4	32	65056	Flange Whizlock Nut 1/4-20	3
5	12029	Hex Shaft	1	33	12306	R.H. Axle Shaft	1
6	66015	Woodruff Key 1/8 x 5/8 x 1/4	1	34	58003	Roll Pin 3/16 x 1-1/4	1
7	57043	Ext. Snap Ring 1-1/4 SFT x .050	1	35	35169	Spindle Cup	1
8	54083	Radial Bearing 1-1/4 ID x 2-3/16 OD	1	36	10366	Push Nut	1
9	70009	Flange Whizlock Screw 5/16-18 x 1/2	5	37	3377	Hub Cap	2
10	3003	Friction Disc	1	38	12307	(A)Bearing Flange	1
11	12183	Hub	1	39	55108	(A)Flange Bushing 1-1/8 x 1-1/4 x 3/4	1
12	22093	Zerk Fitting	1	40	54083	(A)Radial Bearing 1-1/4 ID x 2-3/16 OD	1
13	10276	9 Tooth Sprocket	1		12337	(B)Bearing Assembly	1
14	65054	Center Lock Nut 1/2-20	1	41	12308	(A)Cover	1
15	12129	Flange Bushing	2		12379	(B)Cover	1
16	12181	Carrier Shaft	1	42	55107	Sleeve Bushing 11/16 x 13/16 x 5/8	2
17	64039	Washer .625/.635 x 1.005 x .062	2	43	65040	Center Lock Nut 1/4-20	3
18	54038	Needle Bearing 5/8 ID x 13/16 OD	2	44	512013	L.H. Axle Shaft	1
19	512030	Pinion and Sprocket	1	45	63025	Lock Washer 1/4 ID	1
20	13136	Zerk Fitting	1	46	22093	Zerk Fitting	1
21	12078	Chain	1	47	71038	Wheel 6" O.D.	2
22	74014	Taptite 5/16-18 x 1/2	2		71028	Turf Saver Tire & Wheel	
23	12027	Carrier	1		71182	Turf Saver Tire 13 x 5.00-6	
24	12180	Locating Plate	1		71205	Turf Mate Tire	2
25	58030	Roll Pin 3/16 x 1-1/2	1		71221	Turf Mate Tire & Wheel	2
26	59056	Cap Screw 1/4-20 x 1-1/4	3	48	74063	Taptite 1/2-20 x 5/8	6
	59080	Cap Screw 1/4-20 x 5/8	3	49	12309	Spindle Cup	1
27	512012	Differential Assembly	2	50	67004	Cotter Pin 1/8 x 1"	1
28	3017	Bearing Flange	1	51	56034	Seal	2

(A) 912010S/N <005000  
912011S/N <008600

(B) 912010S/N 005001>  
912011S/N 008601>  
912012S/N 000101>

# Engine and Traction Drive

Models 912010,11,12



# Engine and Traction Drive

Models 912010,11,12

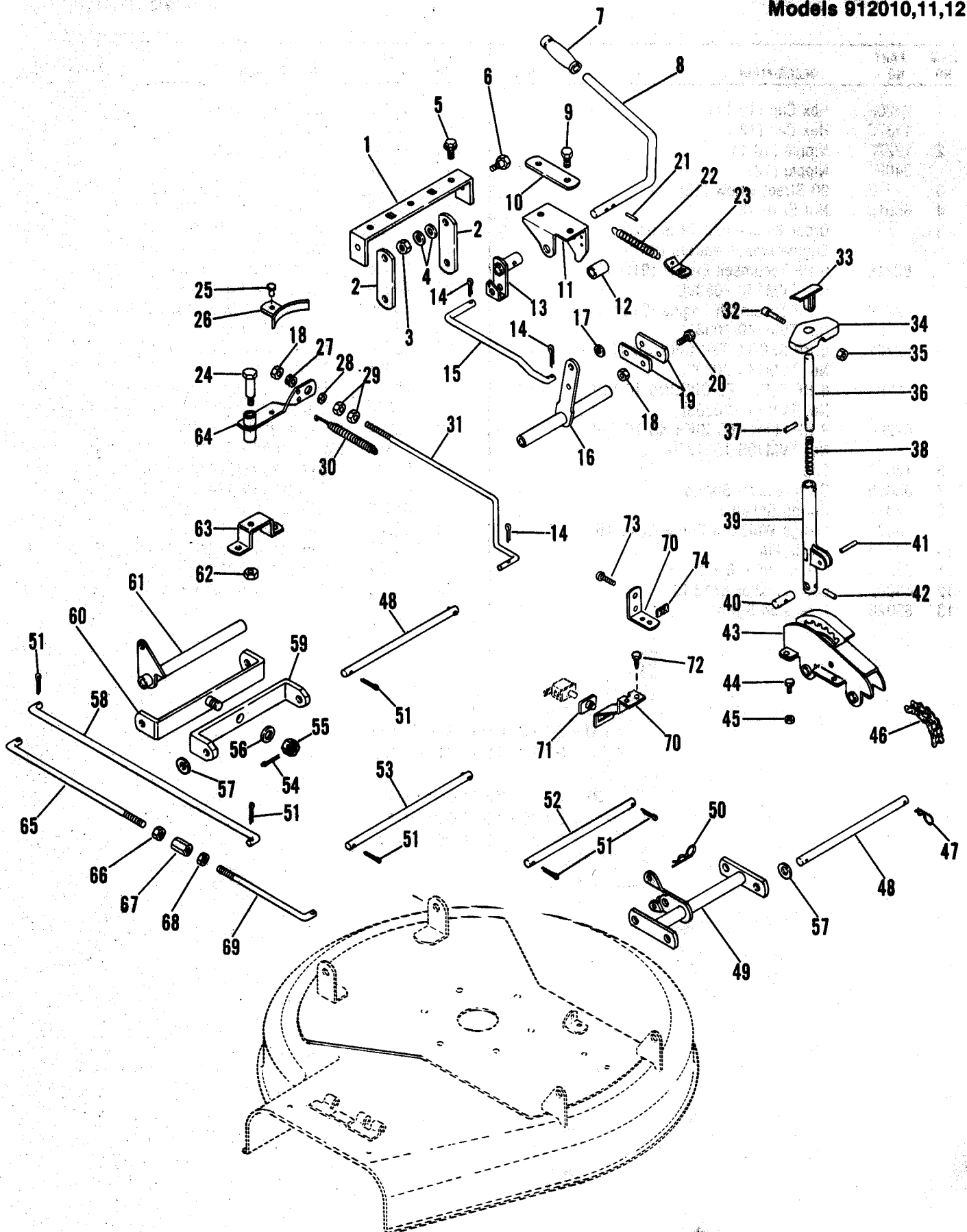
ITEM NO	PART NO	DESCRIPTION	QTY	ITEM NO	PART NO	DESCRIPTION	QTY
1	25208	Hex Cap (10,11)	1	14	59069	Cap Screw 5/16-18 x 1-1/4	1
	12378	Hex Cap (12)	1	15	12142	Idler Arm	1
2	12222	Nipple (10,11)	1	16	12131	Bearing Spacer	1
	34091	Nipple (12)	1	17	12132	Idler	1
3	12377	90 Street Elbow (12)	1	18	64002	Washer .370/.390 x .875 x .083	1
4	65015	Nut 5/16-18	2	19	65042	Two Way Lock Nut 5/16-18	4
5		Order Engine and Parts from Engine Manufacturers Dealer		20	59039	Cap Screw 5/16-18 x 1/2	2
	82218	6 HP Tecumseh Engine (912010) No. TVM140-70389L		21	64007	Washer .307/.327 x .734 x .065	2
	82219	6 HP Tecumseh Engine (912011) No. TVM140-70388L		22	12006	Drive Spring Housing	1
	82262	6 HP RECOIL TEC GROUND TO RUN No. TVM140-70399L	1	23	70014	Cap Screw Spl 5/16-18 x 3/4	1
	82263	6 HP ELEC TEC GROUND TO RUN No. TVM140-70398L	1	24	54039	Ball Bearing 5/8 ID x 1-3/8 OD	2
	82264	8 HP ELEC TEC GROUND TO RUN No. TVM195-150172N	1	25	12100	Bearing Spacer	1
6	12013	Cap	1	26	12010	Drive Spindle Housing	1
7	83055	Compression Spring	1	27	12316	Drive Disk	1
8	12014	Spring Retainer	1	28	58003	Roll Pin 3/16 x 1-1/4	1
9	70009	Flange Whizlock Screw 5/16-18 x 1/2	5	29	72048	V-Belt SAE 380 28-3/64 x 13/32	1
10	12150	Clevis Pin	1	30	12204	(A)Engine Pulley	1
11	67004	Cotter Pin 1/8 x 1"	1		12345	(B)Engine Pulley	1
12	63003	Lock Washer 5/16 ID	4	31	66009	Woodruff Key 5/32 x 5/8 x 1/4	1
13	83026	Extension Spring	1		66043	Straight Key 1/4 x 1-1/2 x 1/4	1
				32	64028	Washer .438 x 1.125 x .188	1
				33	63004	Lock Washer 3/8 ID	1
				34	59017	Cap Screw 3/8-24 x 1-1/4	1
				35	59134	Cap Screw 5/16-18 x 1-1/4 Gr r	3
				36	64123	Washer .339/.359 x .687 x .065	3

(A) 912010S/N <005000  
912011S/N <008600

(B) 912010S/N 005001>  
912011S/N 008601>  
912012S/N 000101>

# Rotary Mower Linkage

Models 912010,11,12



# Rotary Mower Linkage

Models 912010,11,12

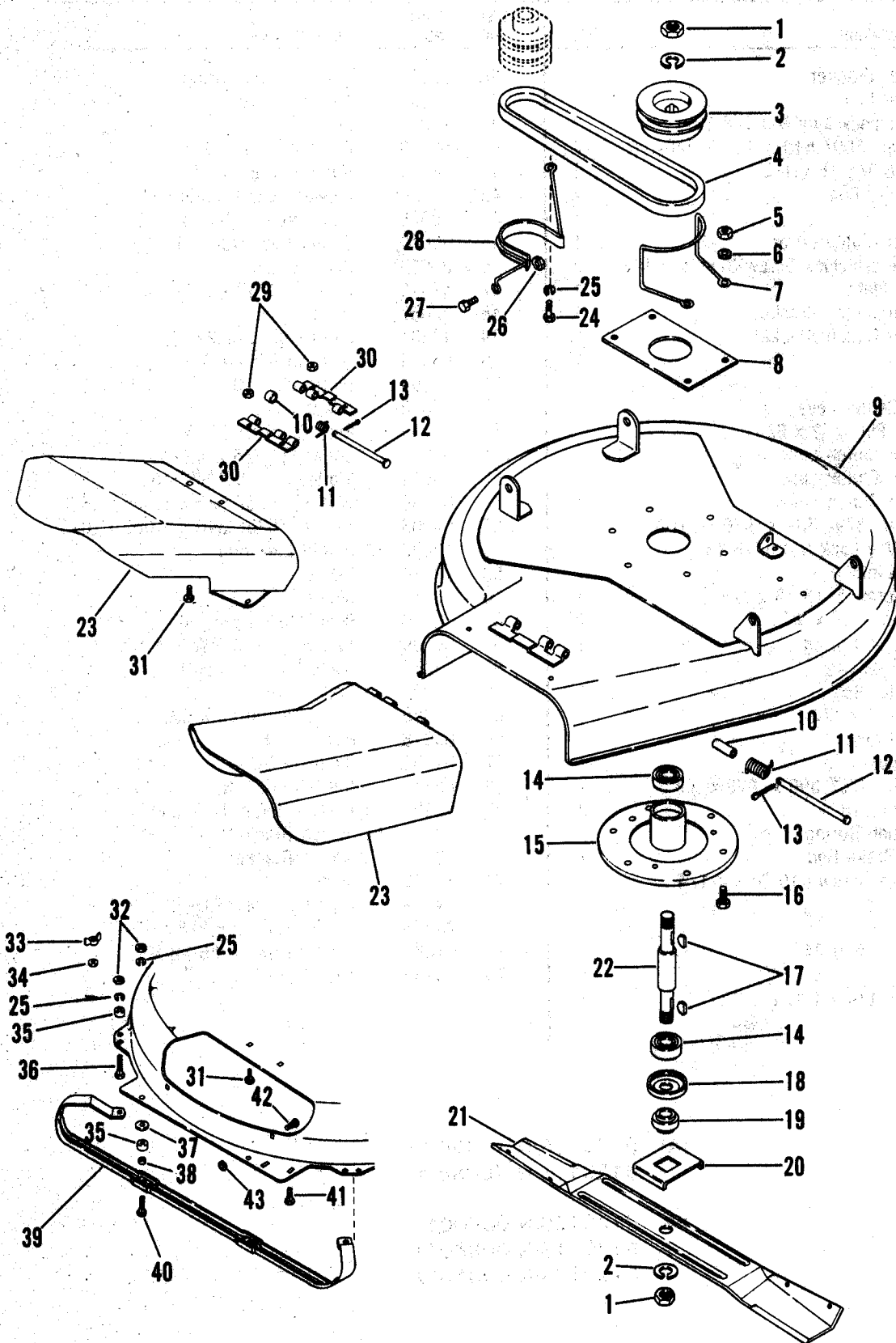
ITEM NO	PART NO	DESCRIPTION	QTY	ITEM NO	PART NO	DESCRIPTION	QTY
1	12050	Hanger Bracket	1	38	83015	Compression Spring	1
2	12124	Hanger Link	2	39	12294	Mower Lift Arm	1
3	65060	Center Lock Jam Nut 3/8-16	2	40	12295	Pin	1
4	64038	Washer .500/.510 x .875 x 24GA.	4	41	58033	Roll Pin 5/32 x 3/4	1
5	74016	Taptite 3/8-16 x 1/2	3	42	58034	Roll Pin 1/8 x 3/4	1
6	11120	Shoulder Bolt	2	43	12284	Mower Height Quadrant	1
7	75148	Grip	1	44	59028	Cap Screw 1/4-20 x 1/2	4
8	12327	Mower Clutch Lever	1	45	65040	Center Lock Nut 1/4-20	4
9	70010	Flange Whizlock Screw 3/8-16 x 1/2	2	46	25083	Roller Chain	1
10	12090	Guide Plate	1	47	67010	Hair Pin 3/32 x 1-27/64	1
11	26079	(A)Mower Clutch Bracket	1	48	12067	Hanger Pin	2
	12358	(B)Mower Clutch Bracket	1	49	12331	Pan Height Bracket	1
12	12210	(A)Roller	1	50	67044	Hair Pin 9/64 x 3-5/16	1
	12338	(B)Roller	1	51	67004	Cotter Pin 1/8 x 1"	6
13	26077	Over Center Lever	1	52	26078	Adapter Pin	1
14	67001	Cotter Pin 3/32 x 3/4	3	53	12059	Rear Bracket Pin	1
15	12253	(A)Mower Clutch Link	1	54	67014	Cotter Pin 1/8 x 1-1/4	1
	12357	(B)Mower Clutch Link	1	55	65049	Slotted Jam Nut 5/8-18	1
16	12108	Mower Clutch Lever	1	56	64039	Washer .625/.635 x 1.005 x .062	1
17	64078	Washer .379/.389 x .626 x 21GA.	1	57	64003	Washer .526/.546 x 1.062 x .095	3
18	65042	Two Way Lock Nut 5/16-18	3	58	12332	(A)Height Link Rod	1
19	12044	Front Link	2	59	12114	Clevis	1
20	59022	Cap Screw 5/16-18 x 3/4	1	60	12115	Clevis	1
21	58016	Roll Pin 3/16 x 1"	2	61	12116	Rear Raising Bracket	1
22	83011	Extension Spring	1	62	65039	Two Way Lock Nut 3/8-16	1
23	26076	Spring Clip	1	63	12062	Blade Brake Support	1
24	3016	Shoulder Bolt	1	64	12290	Brake Arm	1
25	68016	Rivet 1/4 x 1/2	1	65	12380	(B)7-1/4 Height Link Rod	1
26	12063	Blade Brake	1	66	65018	Nut 3/8-16	1
27	75044	Grommet	1	67	65155	Coupling Nut	1
28	64002	Washer .370/.390 x .875 x .083	1	68	65171	Nut 3/8-16 L.H.	1
29	65015	Nut 5/16-18	2	69	12381	(B)11-1/4 Height Link Rod	1
30	83010	Extension Spring	1	70	12209	(A)Switch Bracket	1
31	12242	Blade Brake Rod	1		12367	(B)Switch Bracket	1
32	59116	Machine Screw #10-24 x 1-1/4	1	71	75045	Switch Boot	1
33	25115	T Plunger	1	72	74079	Tapping Screw #10-24 x 3/8	2
34	25114	T Handle	1		74015	Taptite 1/4-20 x 3/8	2
35	65041	Lock Nut #10-24	1	73	61084	Machine Screw #6-32 x 1"	2
36	26033	Rod	1	74	65169	Keps Nut #6-32	2
37	58007	Roll Pin 1/4 x 1-1/4	1				

(A) 912010S/N <005000  
912011S/N <008600

(B) 912010S/N 005001>  
912011S/N 008601>  
912012S/N 000101>

# Rotary Mower

Models 912010,11,12



# Rotary Mower

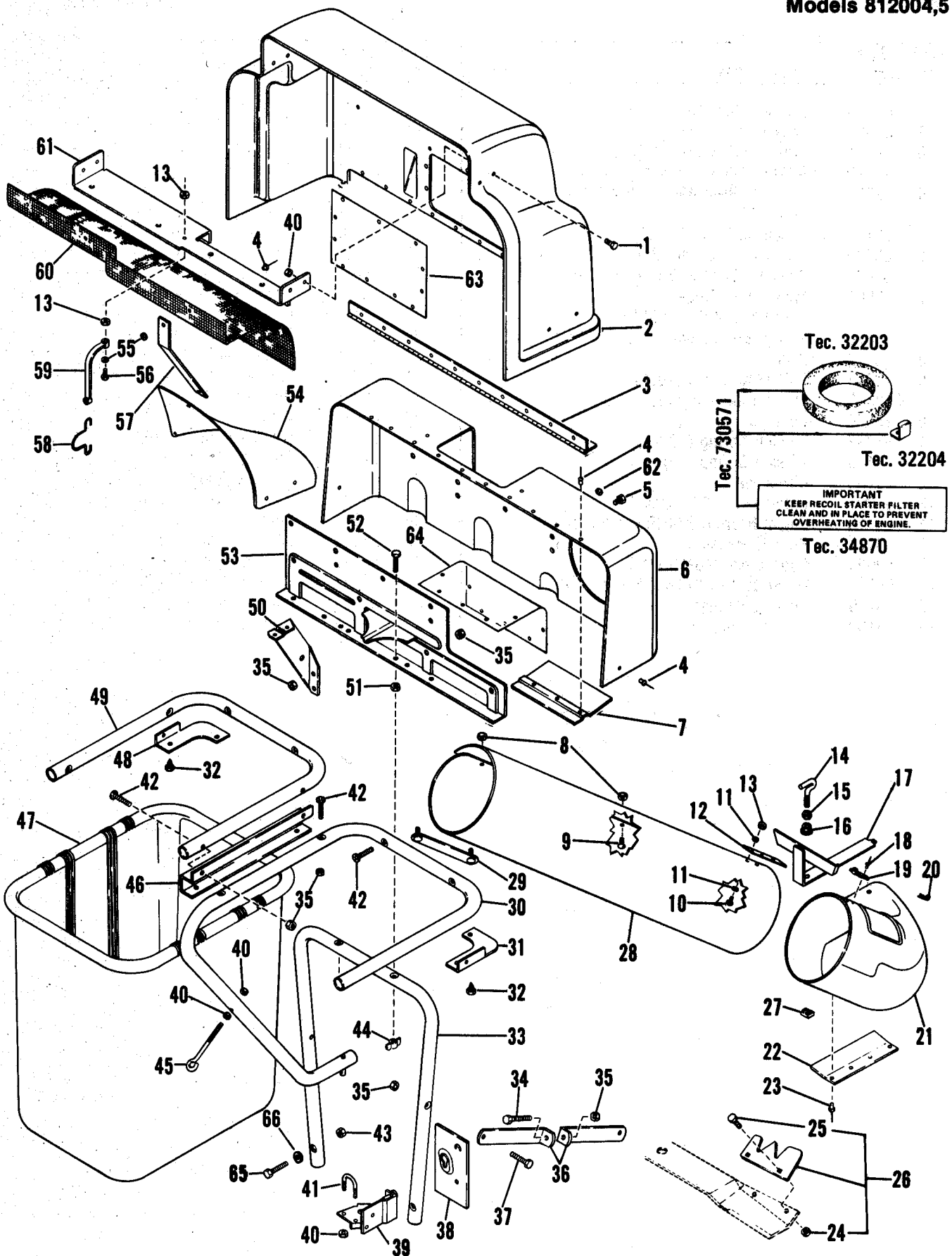
Models 912010,11,12

ITEM NO	PART NO	DESCRIPTION	QTY	ITEM NO	PART NO	DESCRIPTION	QTY
1	65025	Jam Nut 3/4-10	2	20	3170	Blade Tray	1
2	63008	Lock Washer 3/4 ID	2	21	27224	26" Mower Blade (10,11)	1
3	12025	Mower Pulley (10,11,12 S/N 1647))	1		27285	28" Mower Blade (12)	1
	12349	Mower Pulley (12 S/N <1646)	1	22	35267	Spindle Shaft	1
4	72029	V-Belt 5LRMA 49-31/32 x 47/64 (10,11)	1	23	25204	Pan Chute Extension (10,11)	1
	72168	V-Belt 53.78 x .67 (12)	1		27096	Discharge Chute (12)	1
5	65039	Two Way Lock Nut 3/8-16	6	24	59003	Cap Screw 5/16-18 x 1"	1
6	64002	Washer .370/.390 x .875 x .083	2	25	63003	Lock Washer 5/16 ID	8
7	12061	Mower Belt Finger (10,11,12 S/N 1647))	1	26	65042	Two Way Lock Nut 5/16-18	1
	12348	Mower Belt Finger (12 S/N <1646)	1	27	70017	Flange Whizlock Screw 5/16-18 x 5/8	1
8	3117	Plate	1	28	12147	Rear Belt Finger	1
9	512023	26" Mower Pan (10,11)	1	29	65040	Center Lock Nut 1/4-20	4
	512028	28" Mower Pan (12)	1	30	27095	Hinge Plate (12)	2
10	22029	Bushing	1	31	62017	Carriage Bolt 1/4-20 x 5/8	4
11	83072	Torsion Spring (10,11)	1	32	65015	Nut 5/16-18	8
	83185	Torsion Spring (12)	1	33	65064	Wing Nut	1
12	25205	Clevis Pin	1	34	64127	Washer .276/.296 x .625 x 16 Ga	1
13	67001	Cotter Pin 3/32 x 3/4	1	35	27294	Spacer (12)	8
14	54120	Radial Bearing 3/4 ID x 1-25/32 OD	2	36	62018	Carriage Bolt 5/16-18 x 1-3/4	4
15	3172	Spindle Housing	1	37	64082	Washer .323/.333 x 1" x .094	4
16	59004	Cap Screw 3/8-16 x 1"	6	38	6071	Spacer (12)	4
17	66003	Woodruff Key 3/16 x 3/4 x 5/16	2	39	27299	28" Adjustable Skid (12)	2
18	3419	Bearing Slinger	1	40	62048	Carriage Bolt 5/16-18 x 1-1/4	4
19	3169	Retainer Hub	1	41	62037	Carriage Bolt 1/4-20 x 1"	1
				42	62033	Carriage Bolt 5/16-18 x 5/8	1
				43	65149	Push Nut 5/16	1



# Bagger

Models 812004,5



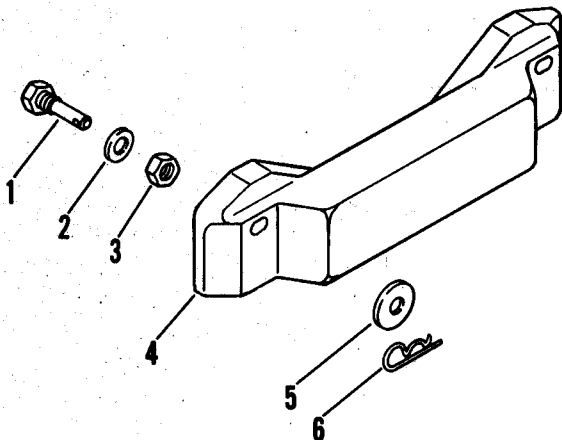
# Bagger

Models 812004,5

ITEM NO	PART NO	DESCRIPTION	QTY	ITEM NO	PART NO	DESCRIPTION	QTY
1	59028	Cap Screw 1/4-20 x 1/2	4	33	12297	Support Bar	1
2	512022	Cover	1	34	59074	Cap Screw 5/16-18 x 2-3/4	2
3	27253	Hinge	1	35	65042	Two Way Lock Nut 5/16-18	16
4	68025	Pop Rivet 3/16 x .402	42	36	12283	Adjsutment Bracket	4
5	61042	Machine Screw 5/16-18 x 3/4	4	37	59045	Cap Screw 5/16-18 x 1-1/2	2
6	512027	Stationary Cover	1	38	12262	Adapter Bracket	1
7	35585	Tube Guide	1	39	12313	Frame Mounting Bracket	1
8	65056	Flange Whiz-Lock Nut 1/4-20	5	40	65040	Center Lock Nut 1/4-20	8
9	62053	Carriage Bolt 1/4-20 x 1/2	1	41	2137	U Bolt	1
10	61012	Machine Screw #10-24x 1/2	2	42	61052	Machine Screw 5/16-18 x 1-1/2	8
11	64141	Washer .214/.227 x .500 x .049	4	43	65062	Nylon Lock Nut 5/16-18	2
12	35584	Strap	1	44	65113	Wing Nut 5/16-18	2
13	65041	Torque Lock Nut #10-24	4	45	24327	Eye Bolt	1
14	30733	Clamp Screw	1	46	27247	Tube Bracket	1
15	65090	Twin Whiz-Lock Nut 5/16-18	1	47	27244	Grass Bagger Basket	2
16	65078	Flange Whiz-Lock Nut 5/16-18	1	48	27251	L.H. Corner Bracket	1
17	12328	Bracket	1	49	27246	Center Tube	1
18	68062	Rivet 3/16 x 3/8	2	50	27252	Brace	2
19	25396	Retainer	1	51	65015	Nut 5/16-18	2
20	67029	Hair Pin 3/32 x 1-7/8	1	52	59215	Tap Bolt 5/16-18 x 1-1/2	2
21	527053	Boot (04)	1	53	12321	Cover Mounting Bracket	1
	527054	Boot (05)	1	54	27312	Baffle	1
22	25322	Chute Extension	1	55	64068	Washer .192/.196 x .492 x .047	14
23	68053	Truss Rivet 3/16 x 11/32	4	56	61016	Machine Screw #10-24 x 7/8	1
24	65145	Top Lock Nut 5/16-24 GR.C	4	57	27311	Brace	1
25	59206	Cap Screw 5/16-24 x 3/4 GR 8	4	58	27381	Hook	1
26	527011	Vane	2	59	75075	Battery Strap	1
27	70094	Retainer Nut 5/16-18	1	60	27305	Screen	1
28	12323	Tube Blank (4)	1	61	27306	Cover Bracket	1
	12368	Tube Blank (5)	1	62	64079	Washer .339/.359 x 1.125 x .063	4
29	25333	Clip	2	63	27427	Stationary Cover Window	1
30	27248	R.H. Tube	1	64	27249	Hinged Cover Window	1
31	27250	R.H. Corner Bracket	1	65	59045	Cap Screw	2
32	74014	Taptite 5/16-18 x 1/2	4	66	64123	Washer	2

## Front Weight

Model 712006



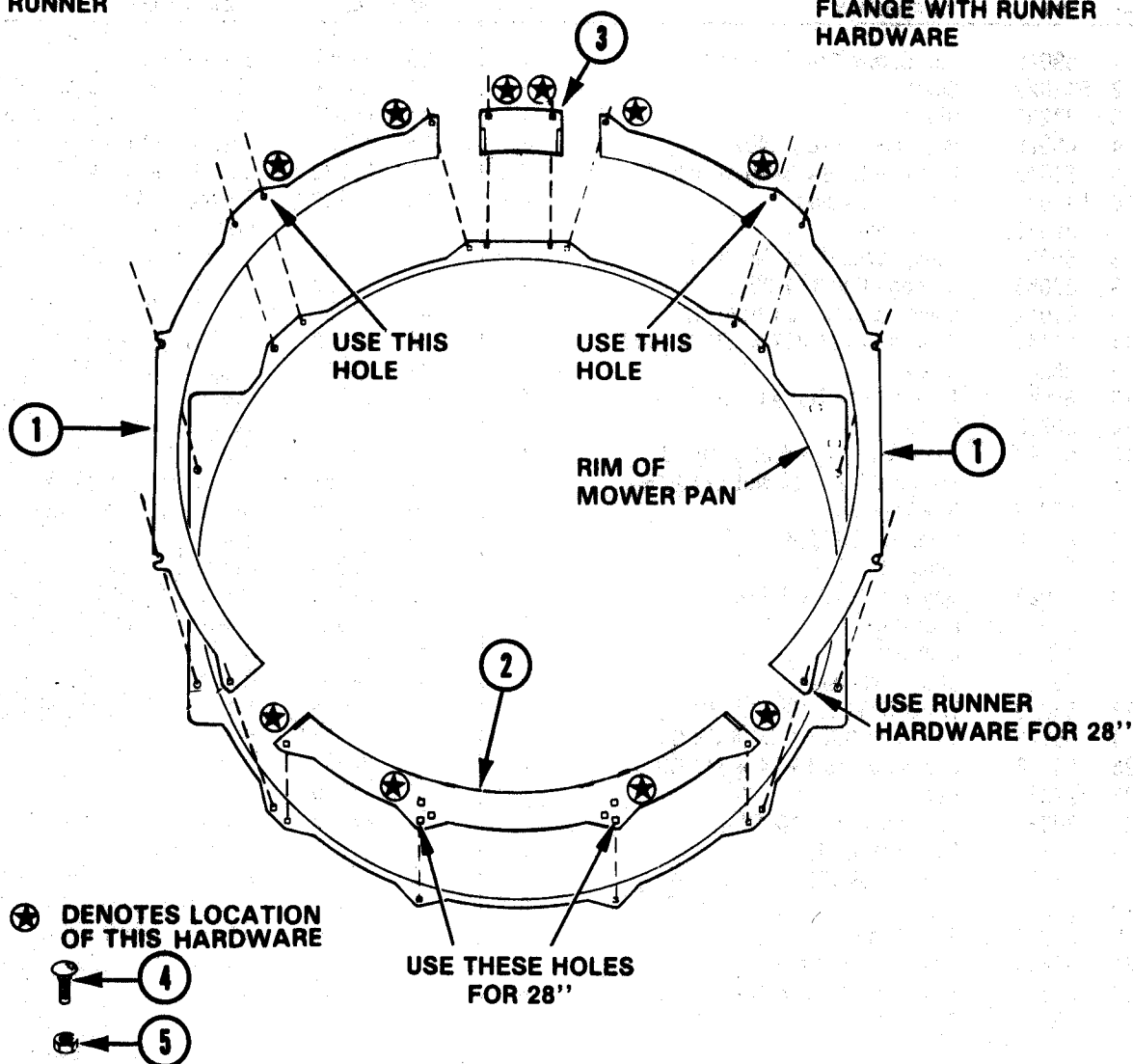
ITEM NO	PART NO	DESCRIPTION	QTY
1	12286	Weight Stud	2
2	64047	Washer .506/.516 X 1.441 X .125	2
3	65046	Lock Nut	2
4	12329	Weight	1
5	64008	Washer .433/.453 X 1.000 X .083	2
6	67029	Hair Pin 3/32 X 1-7/8	2

# 28" Flange Assembly

Model 812005

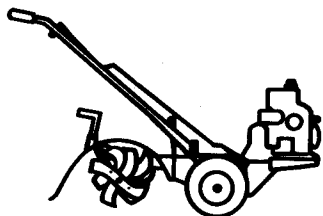
LOOSEN, AND MOUNT 28" FLANGE WITH RUNNER HARDWARE

LOOSEN, AND MOUNT 28" FLANGE WITH RUNNER HARDWARE

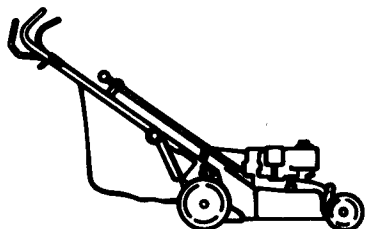


ITEM NO	PART NO	DESCRIPTION	QTY
1	27273	28" Side Flange	2
2	27274	Rear Flange	1
3	27227	Front Flange	1
4	62017	Carriage Bolt 1/4-20 x 5/8	10
5	65040	Nut 1/4-20	10

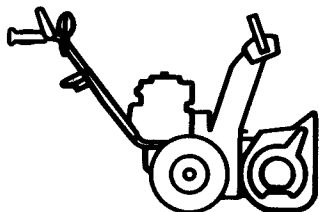
Ask your dealer for information  
about these other fine Ariens  
products:



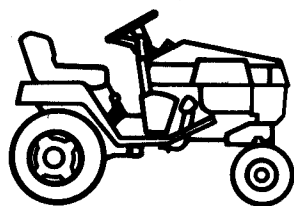
**Garden Tillers**



**Walk Behind Mowers**



**Walk Behind Sno-Thro**



**Lawn & Garden Tractors**

# Ariens

Ariens Company  
655 W. Ryan Street  
Brillion, WI 54110-1098