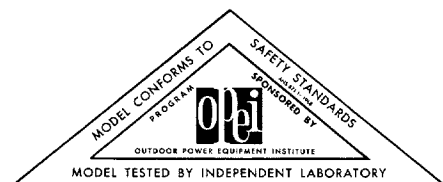
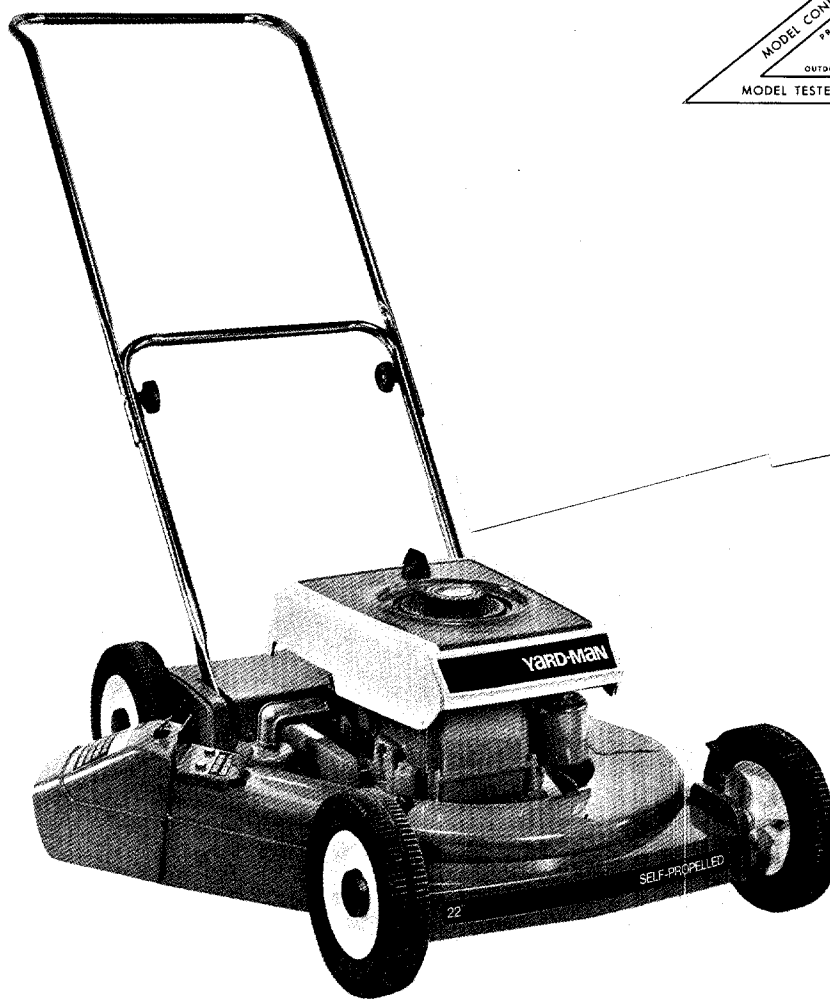


Operating manual *and* parts list

MODEL 2380-2
22-INCH
ELECTRIC START
ROTARY MOWER



YARD-MAN

1410 West Ganson Street — Jackson, Michigan 49202

RULES FOR SAFE OPERATION

Your rotary mower is a precision piece of power equipment. Engineering skill and experience have been combined to provide the ultimate in safety and efficiency, however, as with any type of power equipment, carelessness or error on the part of the operator can result in injury. Exercise extreme caution at all times.

1. **KNOW YOUR MACHINE** Read the Owner's Manual and Engine Manual carefully—learn how to operate your mower properly.
2. **MAKE SURE THE LAWN IS CLEAR** of sticks, stones, wire and other hazardous items from lawn before mowing. Such items are dangerous to both the mower and individuals in the vicinity of the mower.
3. **ADD FUEL BEFORE STARTING ENGINE**—never when engine is hot or running.
4. **ALWAYS STOP ENGINE** (turn off switch or disconnect sparkplug wire) before attempting any repairs or adjustments.
5. **START ENGINE CAREFULLY** Always stand at side opposite discharge chute. **NEVER PLACE HANDS OR FEET UNDER THE MOWER OR NEAR THE DISCHARGE CHUTE WHILE THE ENGINE IS RUNNING.**
6. **DO NOT TILT MOWER** at extreme angle while engine is running. Cut grass on hills and banks sideways.
7. **STOP THE ENGINE** when not cutting grass.
8. **DO NOT ALLOW MINORS** to operate mower unless thoroughly instructed and properly supervised.
9. **KEEP CHILDREN AND PETS AWAY** from area at all times during mowing operation.
10. **ALWAYS CHECK FOR DAMAGE** If you should strike some foreign object while mowing, stop your mower. Inspect for and repair any damage before restarting and operating the mower.
11. **THE FOOT GUARD** must be in the DOWN (OPERATING) position at all times during mowing operation.
12. **DISENGAGE ALL BLADE AND DRIVE CLUTCHES** before starting units so equipped. Do not attempt to start engine while mower is resting in high grass.

SUGGESTIONS FOR MORE EFFICIENT, AND MAINTENANCE-FREE OPERATION

GENERAL MOWING

1. Always keep mower blade "Knife" sharp and balanced for maximum cutting efficiency.
2. Always start engine with mower on level surface where blade will not drag on tall grass or other obstructions. After starting, let engine warm up several minutes at slow speed before starting to mow.
3. When mowing under normal conditions, run mower at 1/2 to 3/4 throttle for best results.
4. When cutting tall heavy growth, or on rough ground, place mower in highest cut position and gradually reduce to desired cutting height over course of two or three mowings.

TO RECHARGE BATTERY

Plug the charger cord into a 120V AC outlet to recharge. It is not possible to overcharge the battery and as current demand is extremely low, leave the charger connected as much as possible during the entire mowing season.

NOTE: If the temperature is below 40°F move the battery to a warmer area before charging. As this battery will not freeze, it is not necessary to maintain a charge except during the mowing season.

MAINTENANCE

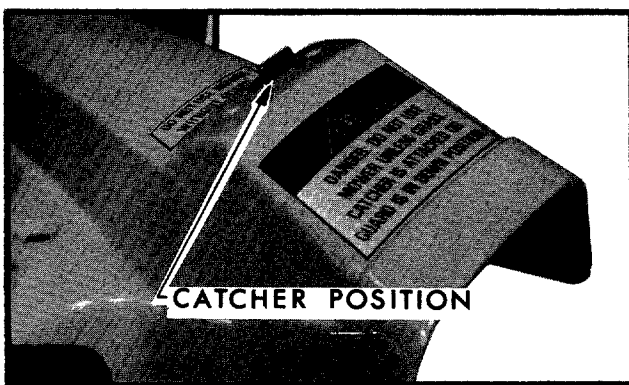
Your mower like all machines with moving parts must receive care and maintenance. The following tips, if used, will contribute many trouble-free hours to your mower.

1. Check oil level frequently. When checking or changing oil, make sure dirt and debris is cleaned off oil sump before removing oil plug.
2. Keep mower clean, especially the engine and underside of mower housing.
3. Check all nuts, bolts and screws occasionally to be sure mower is in good operating condition.
4. Should excessive vibration develop, check your blade and crankshaft immediately. Do not operate mower with an unbalanced blade, a damaged blade or a damaged crankshaft.
5. The wheel bearings are pre-lubricated at the factory and should require no further attention until mower is serviced.
6. If you are going to store your mower for any length of time (30 days or longer) it is important that the following steps be taken:
 - a. Drain the gas tank. Start the engine and allow it to run out of gas. Gasoline left in the engine will leave gum deposits in the carburetor and gas tank.
 - b. Clean engine of all foreign matter.
 - c. Lubricate cylinder by removing the sparkplug and pouring one ounce of clean lubricating oil through the sparkplug hole into the cylinder. Crank engine slowly to spread oil and replace sparkplug. To start after storage remove sparkplug and rotate engine with starter to remove excess oil.
7. Just as your automobile needs professional mechanical maintenance from time to time, so does your air cooled engine. A yearly tune-up and check by a Qualified Service Center is recommended to avoid break-downs and unnecessary delays during the cutting season.

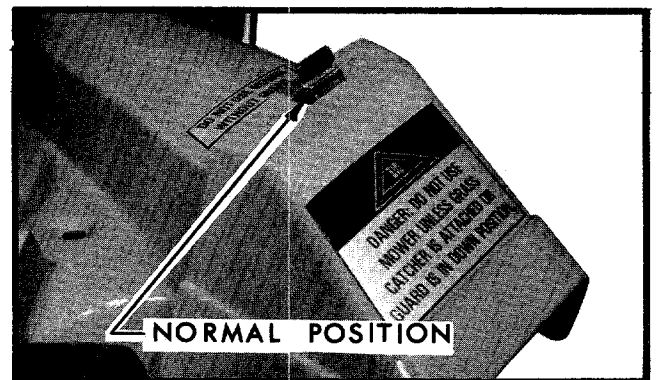
MISSILE DEFLECTOR

The missile deflector and foot guard are intended to add to the safety of the mower by deflecting objects thrown out the discharge chute and from under the housing, in a downward direction. It is important that the deflector and guard are in the proper position at all times. To change positions of the deflector, press the spring lever to free the deflector, move to the desired location then release the lever.

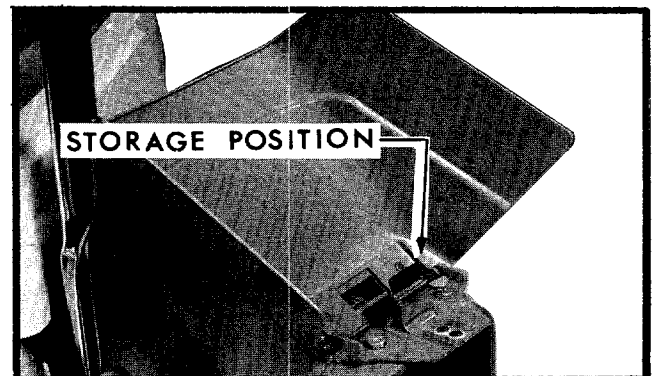
NORMAL OPERATING POSITION: When operating your mower without the grass catcher the deflector should be in the normal operating position as shown.



STORAGE POSITION: This position is to be used only when storing your mower or for ease in transporting your mower in another vehicle. Take care not to operate your mower with the deflector in this position.



CATCHER POSITION: When using the grass catcher, the deflector must be in the position as shown. The catcher mounting bracket is shown installed, for details showing how to install and use the Yard-Man Grass Catcher see the instruction sheet packed with the catcher.



PREPARING YOUR YARD-MAN MOWER FOR USE

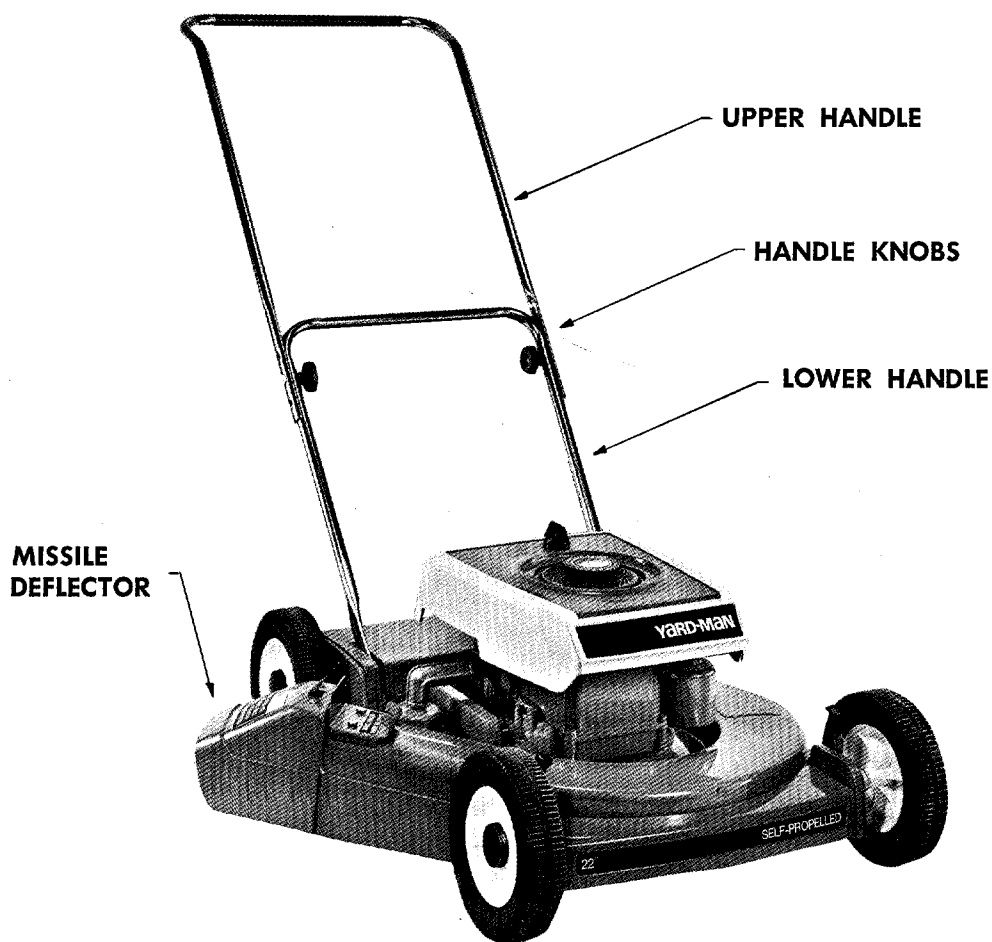
SET-UP

Your mower is shipped in one carton, completely assembled with the handle assembly, foot guard and missile deflector in the shipping or storage position. Use care and caution in removing your mower from the carton. **DO NOT** attempt to lift the unit by the engine shroud.

To place the handle in operating position, press the up-stop lever to release the handle then lift the handle assembly until the lower section snaps into the operating position as shown. The upper section can now be moved into place. Tighten the upper and lower sections together with the handle knobs.

NOTE: When folding handle for storage, make sure the handle knobs are loose enough to allow the upper section to pivot freely around the mounting bolts.

CAUTION: Care should be taken not to force the deflector from the storage position to the catcher position without first locating the spring lever properly. To do this, first remove the sparkplug wire and fasten it at least one inch (1") away from the sparkplug. Guide the spring lever, by hand, into the clearance slot on the underside of the deflector then hinge the deflector into the catcher or operating positions.



BEFORE STARTING ENGINE

Remove OIL FILL DIPSTICK and fill with S.A.E. No. 30 oil, to the level indicated on the dipstick. **CAUTION: DO NOT OVERFILL.**

Fill fuel tank with a good grade regular clean, fresh gasoline. **DO NOT MIX OIL WITH GASOLINE. FOR COMPLETE ENGINE INFORMATION, READ ENGINE INSTRUCTION BOOKLET BEFORE STARTING ENGINE.**

BATTERY CARE

Your Yard - Man mower has a battery charging system built into the charger cord. Charge the battery before initial use (6 to 12 hours) and continually thereafter whenever the mower is not in use during the mowing season. To maintain a charge, simply plug the charger cord into a 120 volt AC outlet.

NOTE: New batteries are partially charged and will require an initial charge of 20 to 24 hours to become fully charged. A 6 to 12 hour initial charge should be sufficient for a number of starts.

TO START ENGINE

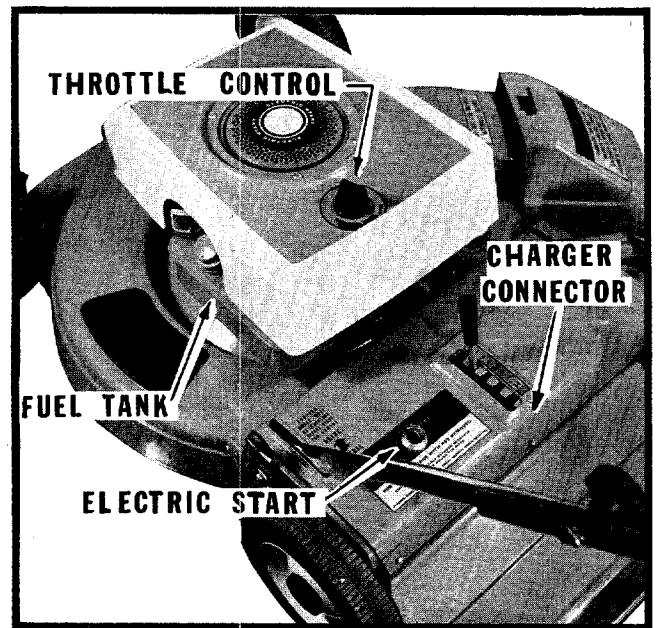
1. Place throttle control knob in HEAVY or NORMAL cutting position.
2. Turn key to start position and hold until the engine starts—then release.
3. When engine starts, move throttle control knob to run position (slow speed) until engine warms up.

NOTE: The fuel tank should be completely full before starting for the first time.

IMPORTANT: If engine floods, place throttle control knob in "Start" position and turn the engine over for about four or five seconds. Then reposition control lever to "Run" position and start engine.

Engine flooding is usually caused by a dirty air cleaner. Service air cleaner regularly as noted in engine operation and maintenance instruction.

If engine continues to flood even with a clean air filter, lean carburetor adjustment screw 1/8 turn (See engine instructions)



TO STOP ENGINE

To stop the engine, turn key to "OFF" position. The engine may also be stopped by moving throttle control to "STOP" position.

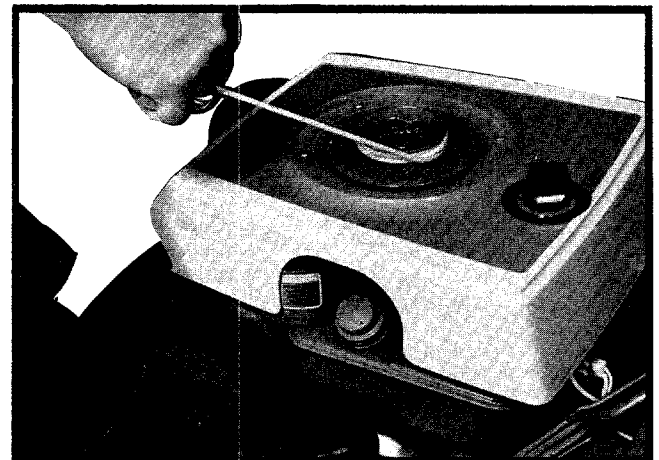
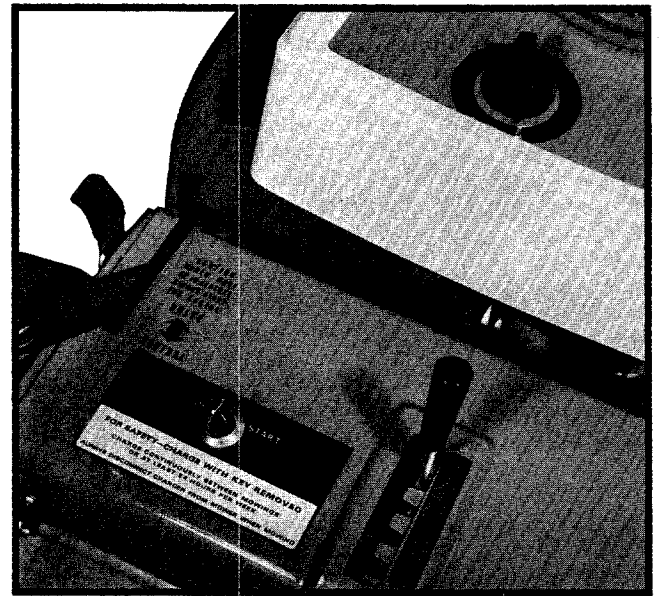
TIPS TO OBTAIN BEST ELECTRIC STARTER PERFORMANCE

- a. Short starting cycles (2 to 3 seconds) provide the longest battery life.
- b. Keep the battery fully charged. This assures quick, and easy starts. (See Pg. 3)
- c. Start engine with mower on sidewalk or driveway where the cutting blades are out of the grass in an unloaded condition. If starts must be made on the lawn, move mower over previously cut grass
- d. Keep the underside of the mower deck clean. Periodically scrape or wash away any built up grass which might add resistance to the cutter blade and electric starting system. (See Pg. 6 for instructions on use of wash out port.)

AUXILIARY ROPE STARTER can be used to start the engine if the batteries run low, or if the engine cannot be started electrically. Remove the plastic cover as shown. Place engine control in "FAST" and key in "On" position. Place rope knot in the impression and wind rope clockwise around pulley and over the knot holding it in place. Pull rope rapidly. Repeat if necessary. (**NOTE:** Auxiliary starter rope is supplied with your mower.)

CAUTION

Always remove the key from the switch when leaving your mower unattended or when mower is not in use.



OPERATING INSTRUCTIONS

This mower is constructed with a "Dead Man" handle. When the handle is down the drive unit is in neutral, when the handle is up the drive (self-propelling) unit is engaged. TO PROPEL THE MOWER FORWARD, simply raise the handle—TO STOP THE MOWER, lower the handle.

CAUTION: The blade is moving whenever the engine is running. Never place your hands or feet in the discharge opening or under the blade housing while the engine is running.

NOTE: If the rear wheels do not roll backwards, WITH THE ENGINE NOT RUNNING, it will be necessary to retune the clutch. This is done by removing the sparkplug wire and securing it at least 1" away from sparkplug. Slowly pull the recoil starter several times with the mower handle down in the neutral (disengaged) position. This will retune the clutch.

TO CHANGE OIL

Engine oil should be changed after the first 5 hours of operation and each 25 hours of operation thereafter.

Drain oil while engine is warm. Disconnect spark plug wire and secure at least 1" away from spark plug. Block right hand side of mower up about 4" high and set shallow one quart container beneath oil drain. Remove oil drain plug from sump and allow oil to drain completely. Replace plug and refill with S.A.E #30 oil. (1 1/4 pints approx.)

TO ADJUST HEIGHT OF CUT

This mower is equipped with individual wheel adjust levers on the front wheels. The rear wheels are adjusted with the single control. To obtain the proper cutting position desired, it is important that all three wheel adjusters are in the same cutting height.

WHEEL ADJUST — FRONT

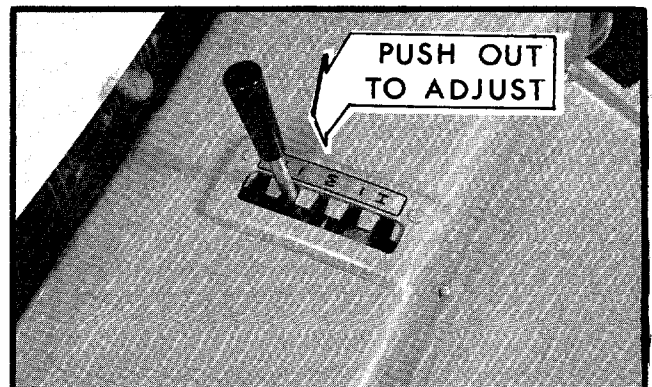
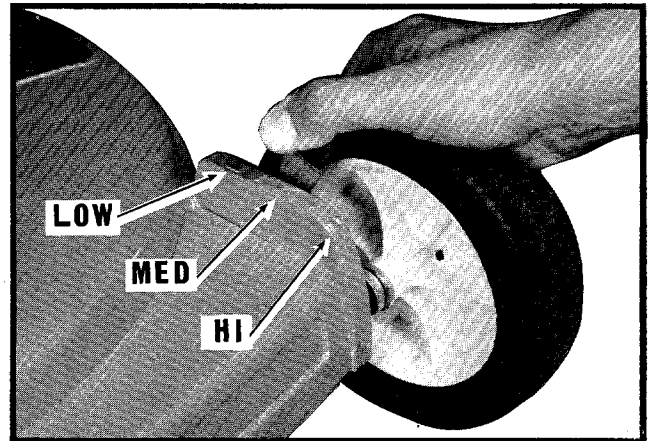
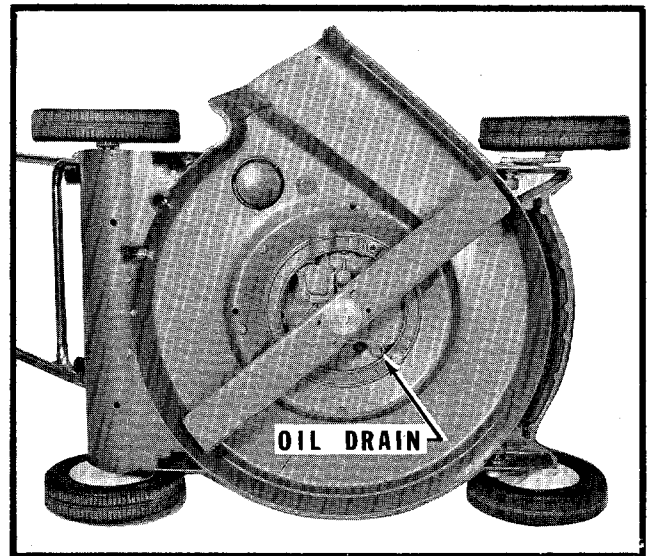
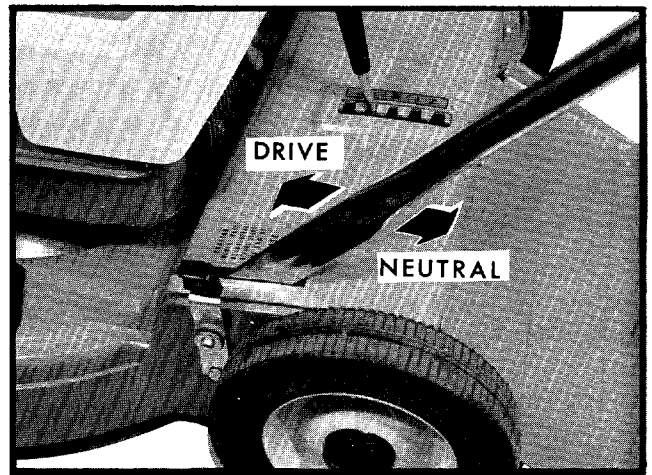
The front wheel adjust levers can easily be adjusted from low to high cut. Place your hand on the outside of the wheel, spring the adjusting lever, with your thumb, outward until the locating trunnion on the lever is free from the housing. Move the wheel and lever to the height of cut desired. Release the lever, allowing the trunnion to drop into the proper locating hole.

WHEEL ADJUST — REAR

The rear wheel adjust is a single lever action which adjusts both rear wheels at the same time. To adjust press the spring loaded handle out of the detent and move it to the proper detent for the cutting height desired.

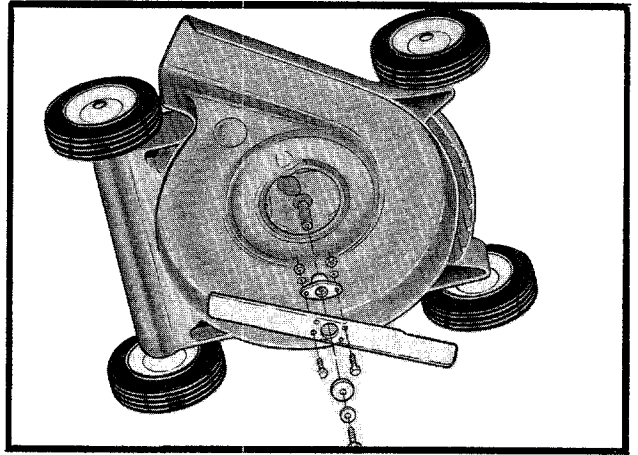
The rear adjust mechanism has a counterbalancing spring to help compensate for the weight of mower when moving from high to low position.

CAUTION: NEVER MAKE ADJUSTMENTS WITH THE ENGINE RUNNING.



TO REPLACE BLADE

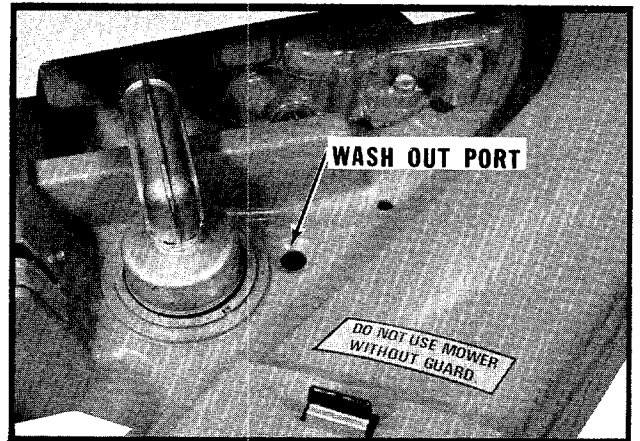
1. Be sure engine is stopped, disconnect spark plug wire and secure at least 1" away from spark plug.
2. Tip mower on the side and remove the blade and adaptor from engine crank.
3. Remove the blade from the adaptor and replace with a new blade. Reassemble to engine.
4. Resharpening of an old blade should only be attempted by a qualified Service Center. This way proper blade balance will be maintained.



TO USE WASH OUT PORT

After mowing, place hose end (without nozzle) into opening located next to discharge chute. Using moderate water pressure, run engine at full throttle speed for about two minutes. This flushes out accumulations of grass clippings from underneath mower housing. DO NOT wash the top. It may be necessary to tilt the mower back on the rear wheels after washing to drain any water which may have accumulated on the top of the housing.

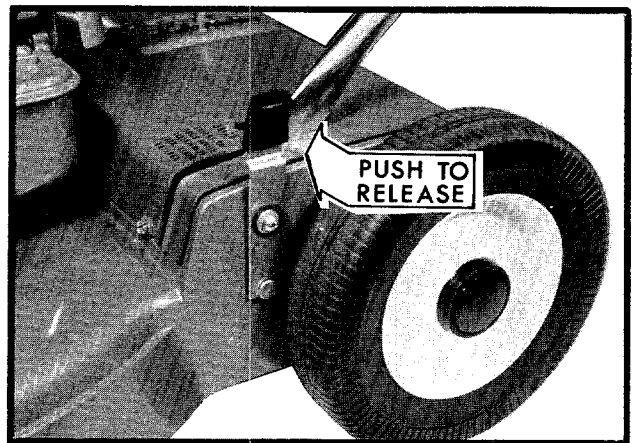
CAUTION: Never place your hands or feet in the discharge opening or under the blade housing while the engine is running.



STORAGE

Your mower is equipped with a folding handle for ease of handling during transport or for storage. To place your mower in storage, release the upstop latch as shown and fold the handle assembly forward, loosen the handle knobs and fold the upper handle section back.

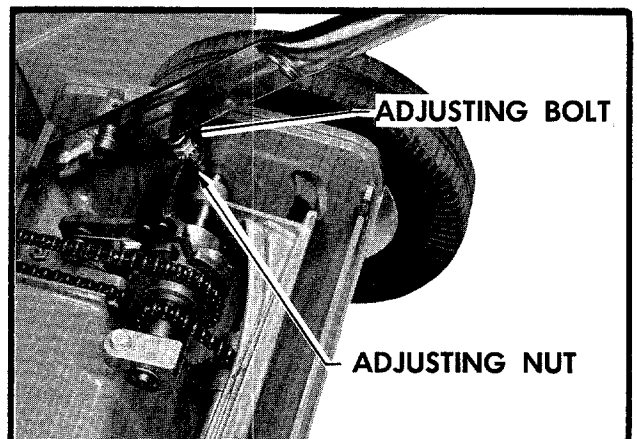
Note: For engine storage refer to Page 3 under Maintenance.



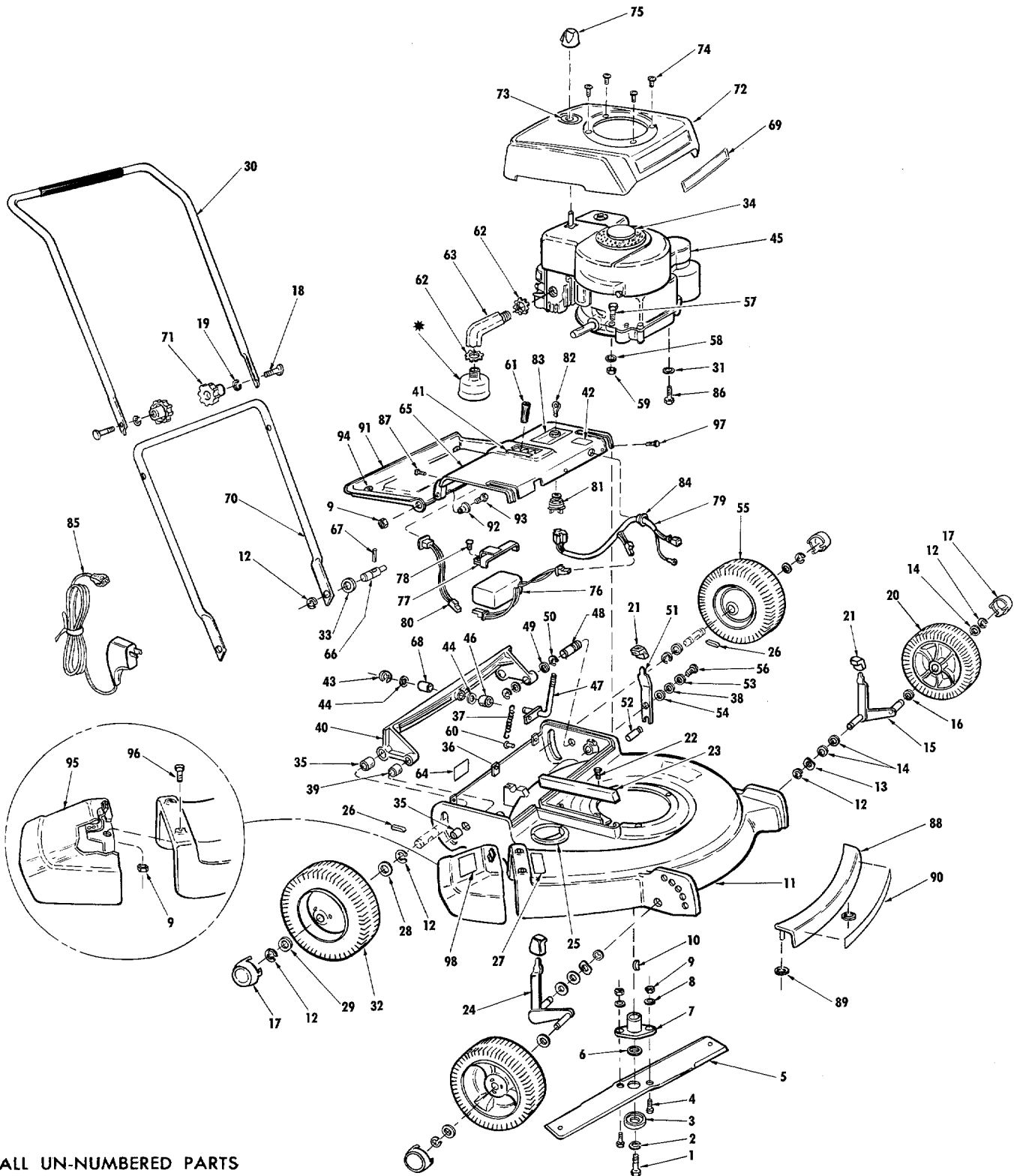
CLUTCH ADJUSTMENT:

Your clutch may at sometime require adjustment.

Procedure: (1) Remove spark plug wire and fasten 1" from plug. (2) Remove rear cover, and loosen jam nut holding clutch adjusting bolt, raise bolt head approximately two turns. Retighten jam nuts and lower handle to operating position. Retime clutch as outlined on Page 4. Replace cover.



MODEL 2380-2



ALL UN-NUMBERED PARTS
INTER-CHANGEABLE WITH
OPPOSITE SIDE.

For Parts List—See Pg. 9

* Engine Part—Refer to Engine Model and Type.

PARTS LIST

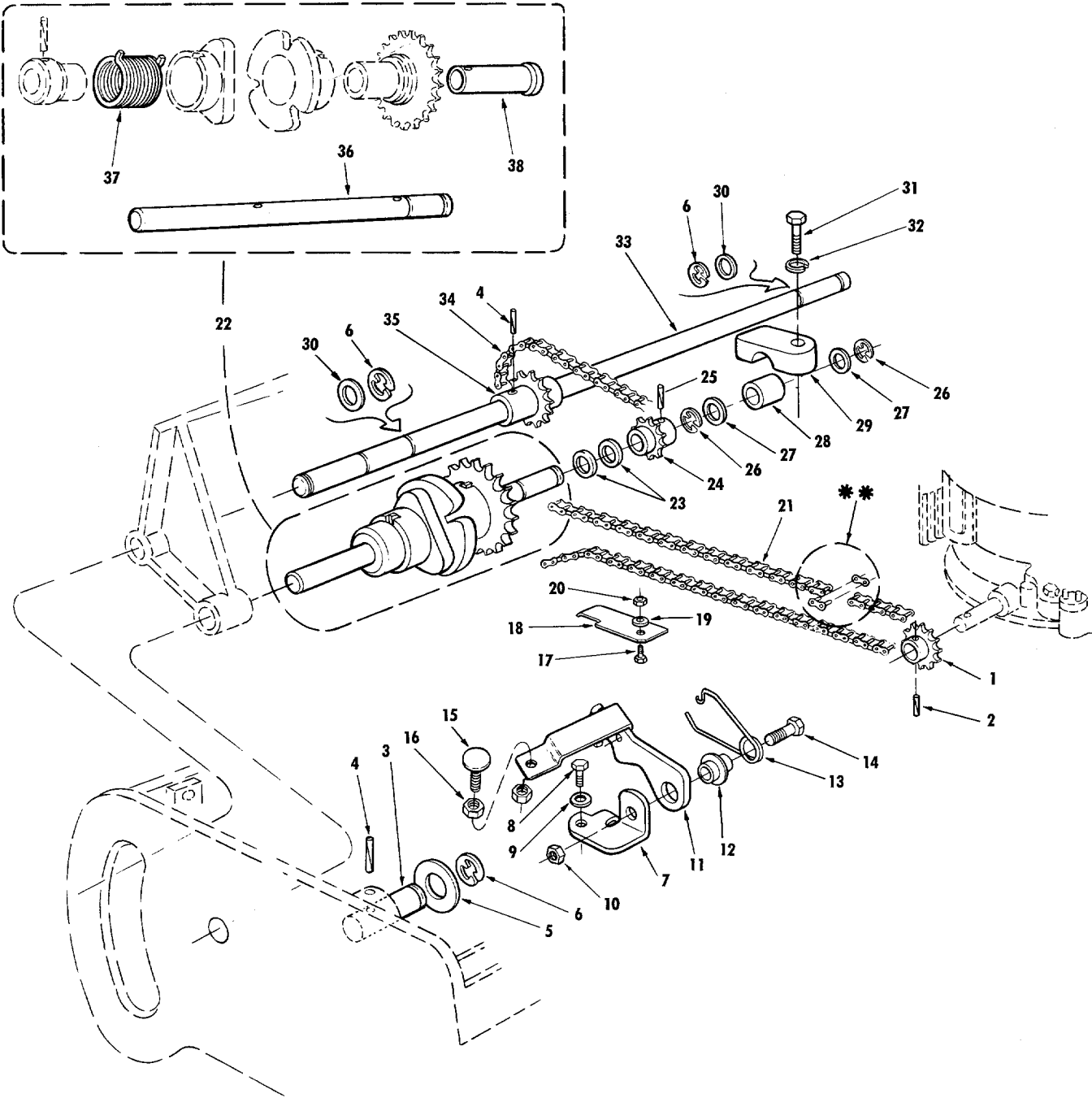
MODEL 2380-2

Your Mower is right hand (R.H.) or left hand (L.H.) as you Mow.

REF. NO.	PART NO.	NAME OF PART	REF. NO.	PART NO.	NAME OF PART
1	1509-101	Bolt (3/8-24 x 1 1/8 Hex Hd. Lock) _____	50	1546-25	Washer (7/16 x 1 x 1/32) _____
2	1542-8	*Lockwasher (3/8 Split) _____	51	1705-35	Lever—Upstop _____
3	1543-39	Washer—Special _____	52	1547-48	Pin—Upstop _____
4	1509-34	*Bolt (1/4-20 x 3/4 Hex Hd.) _____	53	1540-55	Washer—Flat (7/32 x 5/8 x 1/16) ..
5	3604-40	Blade—Grass _____	54	1543-58	Washer—Rubber _____
6	1624-135	Washer (3/8 x 1 x .210) _____	55	2108-177-41	Ass'y—Wheel & Tire (L.H. 8 x 1.75)
7	1143-5	Ass'y—Blade Adaptor _____	56	41-054	Screw (10-32 x 9/16 Ph. Hd.) _____
8	1018	*Lockwasher (1/4 Split) _____	57	1509-75	*Bolt (5/16-18 x 1 1/2 Hex Hd.) _____
9	1538-8	Locknut (1/4-20 Hex Hd.) _____	58	41-046	Washer (11/32 x 7/8 x 3/32) _____
10	1646-8	Key (#6 Woodruff) _____	59	1538-6	*Nut (5/16-18 Hex Lock) _____
11	5601-176-55	Blade Housing _____	60	1545-11	Clevis Pin _____
12	1650-1	Retaining Ring _____	61	1643-38	Knob—Height Adjust _____
13	1552-2	Washer—Wave _____	62	1539-67	Conduit Nut _____
14	1540-90	*Washer (1/2 x 1 x 1/32) _____	63	2610-23	Adaptor—Muffler _____
15	2123-32	Ass'y—Axle (L.H.) _____	64	1605-608	Name Plate _____
16	1540-86	*Washer (1/2 x 1 x 1/8) _____	65	3118-61-55	Ass'y—Cover _____
17	2674-39-40	Hub Cap _____	66	1547-45	Rollpin _____
18	1513-103	Bolt (5/16-18 x 1 3/4 Special) _____	67	1548-15	Rollpin _____
19	1025	*Washer (5/16 Split) _____	68	1658-120	Bearing _____
20	2108-187-41	Ass'y—Wheel & Tire (8 x 1.75) _____	69	1616-564	Label—Yard-Man _____
21	2643-43	Knob—Height Adjust _____	70	3712-137	Ass'y—Lower Handle _____
22	1511-46	Screw (#10 x 5/8 Thd. Cutting) _____	71	1643-47	Knob—Handle _____
23	2639-56-55	Chain Guard _____	72	4699-97-55	Shroud—Engine _____
24	2123-33	Ass'y—Axle (R.H.) _____	73	1616-576	Label—Throttle _____
25	2556-20-55	Muffler Deflector _____	74	1526-1	Screw (#8 x 1/2 Phillips) _____
26	323	Pawl _____	75	2643-44	Knob—Throttle _____
27	1616-525	Label—Catcher Location _____	76	2721-8	Battery _____
28	1540-22	*Washer (19/32 x 1 1/4 x 1/16) _____	77	2132-103	Ass'y—Battery Retainer _____
29	1540-17	*Washer (19/32 x 15/16 x 1/16) ..	78	1511-33	Bolt (1/4-20 x 1/2 Thd. Cutting) _____
30	2117-103	Ass'y—Upper Handle _____	79	2188-9	Ass'y—Wire Harness _____
31	1008	Washer (13/32 x 3/16 x 1/16) _____	80	1188-42	Ass'y—Extension Wire _____
32	1108-176-41	Ass'y—Wheel & Tire (R.H. 8 x 1.75)	81	2160-11	Switch—Ignition _____
33	39-012	Washer (1/2 x 15/16 x 1/16) _____	82	1646-38	Key—Ignition _____
34	1616-561	Label—Auxiliary Starter _____	83	1616-480	Label—Key Switch _____
35	1652-128	Sleeve Bearing (Bronze) _____	84	1657-44	Bushing—Wire Harness _____
36	1539-78	Special Nut _____	85	1772-1	Ass'y Battery Charger _____
37	1642-105	Height Adjust Spring _____	86	1513-56	Bolt (3/8-16 x 1 1/4 Hex Hd.) _____
38	1624-188	Spacer—Upstop Lever _____	87	1511-41	Screw (#10-24 x 5/8 Hex Hd.) _____
39	1652-104	Sleeve Bearing _____	88	3699-112-55	Shroud—Blade Housing, Front _____
40	1132-101	Ass'y—Bracket & Bearings _____	89	1539-20	Nut—Special _____
41	1616-410	Label—Height of Cut _____	90	2616-557	Label—Front Shroud _____
42	1616-450	Label—Drive Control _____	91	4556-25-55	Deflector—Rear Foot Guard _____
43	1650-10	Retaining Ring _____	92	1657-75	Bushing _____
44	1540-43	Washer (21/64 x 15/16 x 1/32) ..	93	1509-15	*Bolt (1/4-20 x 1/2 Hex Hd.) _____
45		Ass'y—Engine Briggs & Stratton Model 92988—Type 1031-01 _____	94	1550-6	Grommet _____
46	1624-183	Spacer _____	95	2189-9	Ass'y—Missile Deflector _____
47	1155-23	Ass'y—Lever & Bracket _____	96	1509-74	*Bolt (1/4-20 x 7/8 Hex Hd.) _____
48	1547-46	Pivot Pin _____	97	1511-46	Screw (10-24 x 5/8 Hex Hd.) _____
49	1650-44	Retaining Ring _____	98	1616-524	Label—Caution _____

*Standard Hardware Item—Purchased Locally.

MODEL 2380-2



ALL UNNUMBERED PARTS
INTERCHANGEABLE WITH
OPPOSITE SIDE

For Parts List—See Pg. 11

**

Master Link Part Number 0113-31
Furnished with Chain Part Number 1654-25
and Chain Part Number 1654-26

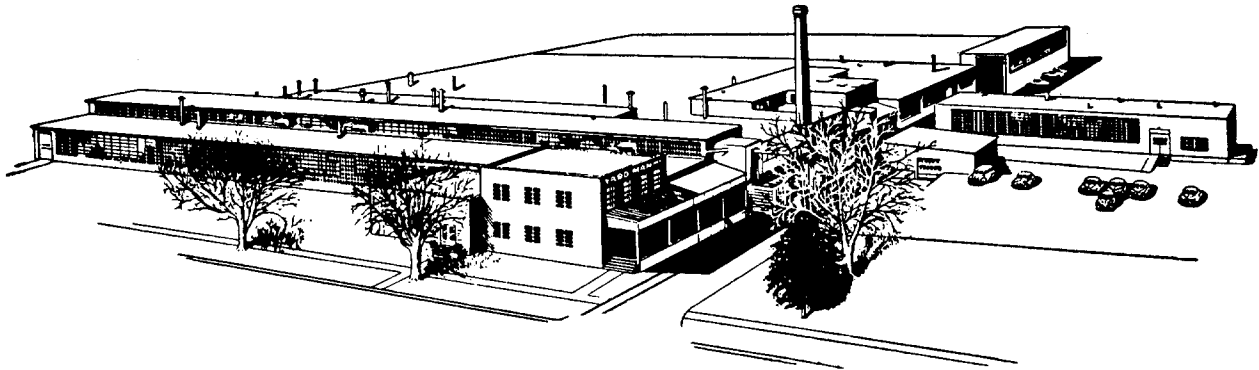
PARTS LIST

MODEL 2380-2

When ordering parts listed as L.H. or R.H.—determine the left or right hand side of your mower by standing behind the unit as you mow.

REF. NO.	PART NO.	PART NAME	REF. NO.	PART NO.	PART NAME
1	1638-55	Sprocket (12 Tooth)	20	1534-1	*Nut (#10-32 Hex)
2	1548-21	Rollpin (3/16 x 3/4)	21	1654-25	Chain
3	1547-59	Pin—Handle Pivot R.H.	22	2175-17	Assembly—Clutch & Shaft
4	1548-15	Rollpin (3/16 x 1)	23	1540-130	Washer (7/16 x 13/16 x 14 Ga.)
5	39-012	Washer (1/2 x 15/16 x 1/16)	24	1638-45	Sprocket (13 Tooth)
6	1650-1	Retaining Ring	25	1548-11	Rollpin (7/32 x 1 1/8)
7	1609-575	Bracket—Actuator Mounting	26	1650-44	Retaining Ring
8	1509-37	*Bolt (5/16-18 x 5/8 Hex Hd.)	27	1540-133	Washer—Special
9	1025	*Washer (5/16 Split Lock)	28	1652-97	Bearing
10	1538-6	*Nut (5/16-18 Hex Lock)	29	1629-64	Retainer
11	1155-40	Ass'y—Actuating Lever & Spring ..	30	1540-22	Washer (.594 x 1 1/4 x 1/16)
12	1657-89	Bushing	31	1513-108	*Bolt (1/4-20 x 1 Hex Hd.)
13	2642-131	Spring—Torsion	32	1018	*Washer (1/4-20 Split Lock)
14	1509-17	*Bolt (5/16-18 x 1 Hex Hd.)	33	2632-191	Shaft—Rear Drive
15	1513-67	Bolt (1/4-20 Special)	34	1654-26	Chain
16	1539-92	Nut (1/4-20 Hex Jam)	35	1638-60	Sprocket (18 Tooth)
17	1095	Screw (10-32 x 1/2 Phillips)	36	1632-190	Shaft—Clutch
18	1724-18	Keeper—Chain Idler	37	1642-136	Spring—Clutch
19	39-027	*Washer (#10 Split Lock)	38	1652-129	Bearing—Clutch

*Standard Hardware Item—Purchase Locally



WARRANTY

We guarantee all parts against defects in material and workmanship for a period of one (1) year from the date of purchase when used for residential. 90 days for commercial.

We agree to repair or replace without charge to the original Purchaser, including labor, any part or parts upon examination by a Yard-Man Authorized Dealer to be defective within the guarantee period except the engine which is warranted separately by the manufacturer. **All transportation charges for replacement under this guarantee must be paid by the Purchaser.**

This guarantee will not apply to a unit which has been subjected to misuse, negligence, accident or to a unit which has been altered in any way.

YARD-MAN

Yard-Man reserves the right to make engineering changes without prior notification or responsibility to the Purchaser.