

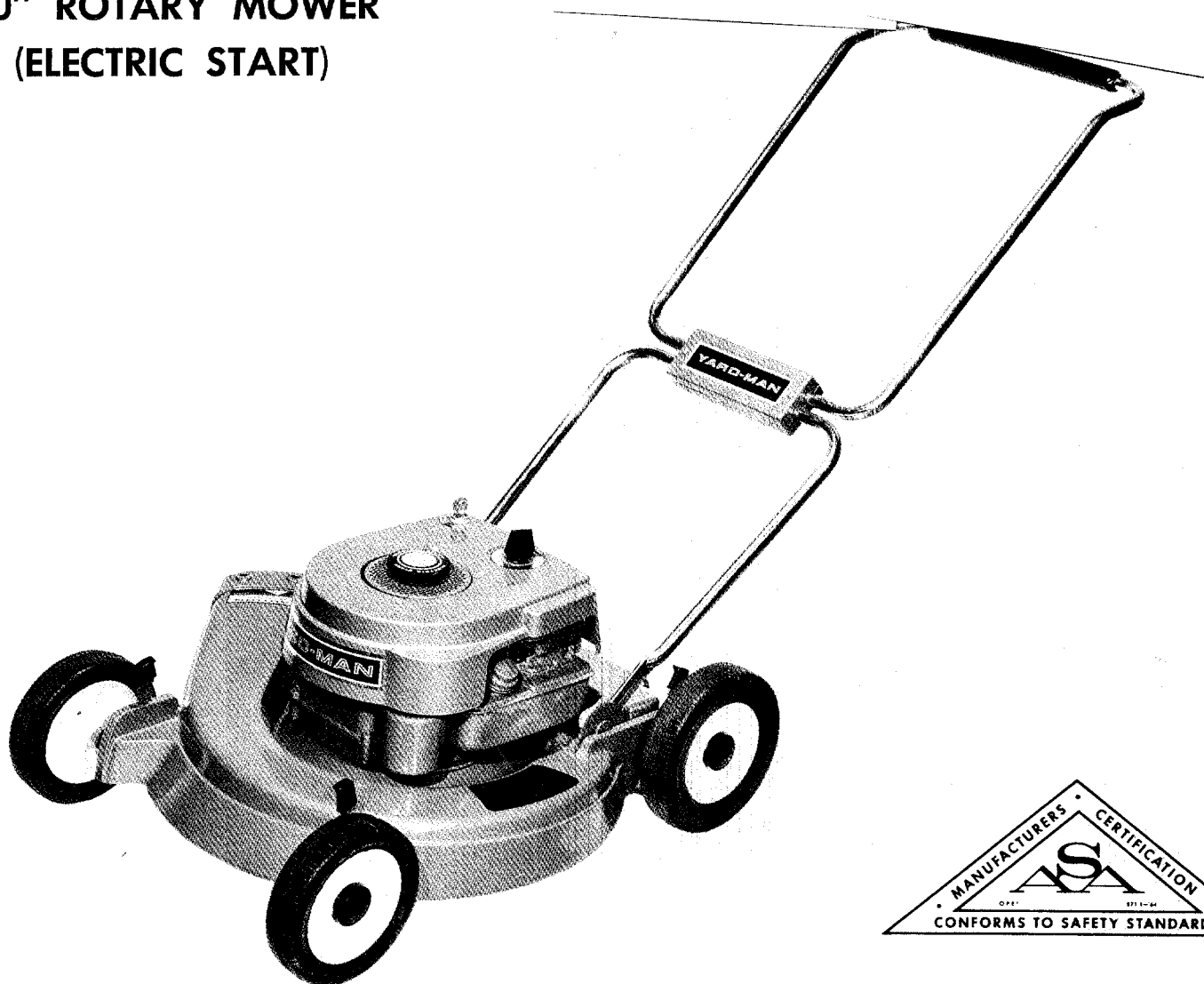
OWNERS

# OPERATING MANUAL

and PARTS LIST

MODEL 2320-0

20" ROTARY MOWER  
(ELECTRIC START)



0611-549

PRINTED IN U.S.A.

# YARD-MAN INC

Jackson Michigan

BUILDERS OF THE ORIGINAL SILENT YARD-MAN LAWN MOWER

## RULES FOR SAFE OPERATION

Your rotary is a precision piece of power equipment, engineering skill and experience have been combined to provide the ultimate in safety and efficiency. However, as with any type of power equipment, carelessness or error on the part of the operator can result in injury. Therefore, exercise extreme caution at all times.

1. **KNOW YOUR MACHINE** Read the Owner's Manual carefully - learn how to operate your mower properly.
2. **MAKE SURE THE LAWN IS CLEAR** of sticks, stones, wire and other hazardous items from lawn before mowing. Such items are dangerous to both the mower and individuals in the vicinity of the mower.
3. **ADD FUEL** before starting engine - - - never when engine is hot or running.
4. **ALWAYS STOP ENGINE** turn off switch or disconnect sparkplug wire before attempting any repairs or adjustments.
5. **START ENGINE CAREFULLY** always stand at side opposite discharge chute (when using auxiliary rope start) **NEVER PLACE HANDS OR FEET UNDER THE MOWER OR NEAR THE DISCHARGE CHUTE WHILE THE ENGINE IS RUNNING.**
6. **DO NOT TILT MOWER** at extreme angle while engine is running. Cut grass on hills and banks sideways.
7. **STOP THE ENGINE** when not cutting grass.
8. **DO NOT ALLOW MINORS** to operate mower unless thoroughly instructed and properly supervised.
9. **KEEP CHILDREN AND PETS AWAY** from area at all times during mowing operation.
10. **ALWAYS REMOVE KEY** from switch when leaving your mower unattended or when mower is not in use.

### **LAWN CARE:**

1. It is not advisable to cut off more than 1/3 of the total length of the grass at any one mowing.
2. When mowing thick, lush wet grass, start at outside of lawn and mow in counter-clockwise direction to prevent mower from recutting clippings from previous rounds.
3. When mowing thin or dry grass, start at outside of lawn and mow in clockwise direction to progressively discharge clippings to center of lawn where they can easily be removed.
4. Recommended normal cutting heights for different types of grass:

1½ to 2½ — Med. to Med. High	Marion blue grass
1½ to 2½ — Med. to Med. High	Kentucky blue grass
1 to 2 — Med. - Low to Med.	Fescues
1 to 2 — Med. - Low to Med.	Rye grass
1 to 1½ — Low to Med. Low.	Bermuda
1 to 1½ — Low to Med. Low.	Zoysia
1 to 2 — Med. - Low to Med.	Bent grass

## SUGGESTIONS FOR MORE EFFICIENT, AND MAINTENANCE-FREE OPERATION

### GENERAL MOWING:

1. Always keep mower blade "Knife" sharp and balanced for maximum cutting efficiency.
2. Always start engine with mower on level surface where blade will not drag on tall grass or other obstructions. After starting, let engine warm up several minutes at slow speed before starting to mow.
3. When mowing under normal conditions, run mower at  $\frac{1}{2}$  to  $\frac{3}{4}$  throttle for best results.
4. When cutting tall heavy growth, or on rough ground, place mower in highest cut position and gradually reduce to desired cutting height over course of two or three mowings.

### USING GRASS CATCHER:

1. When using grass catcher, operate mower engine at  $\frac{3}{4}$  to full throttle.
2. In heavy dense turf, set cutting height in medium to high position.
3. Allow wet grass to dry before attempting to mow with grass catcher attached.
4. Empty catcher bag thoroughly before storage.

### MAINTENANCE

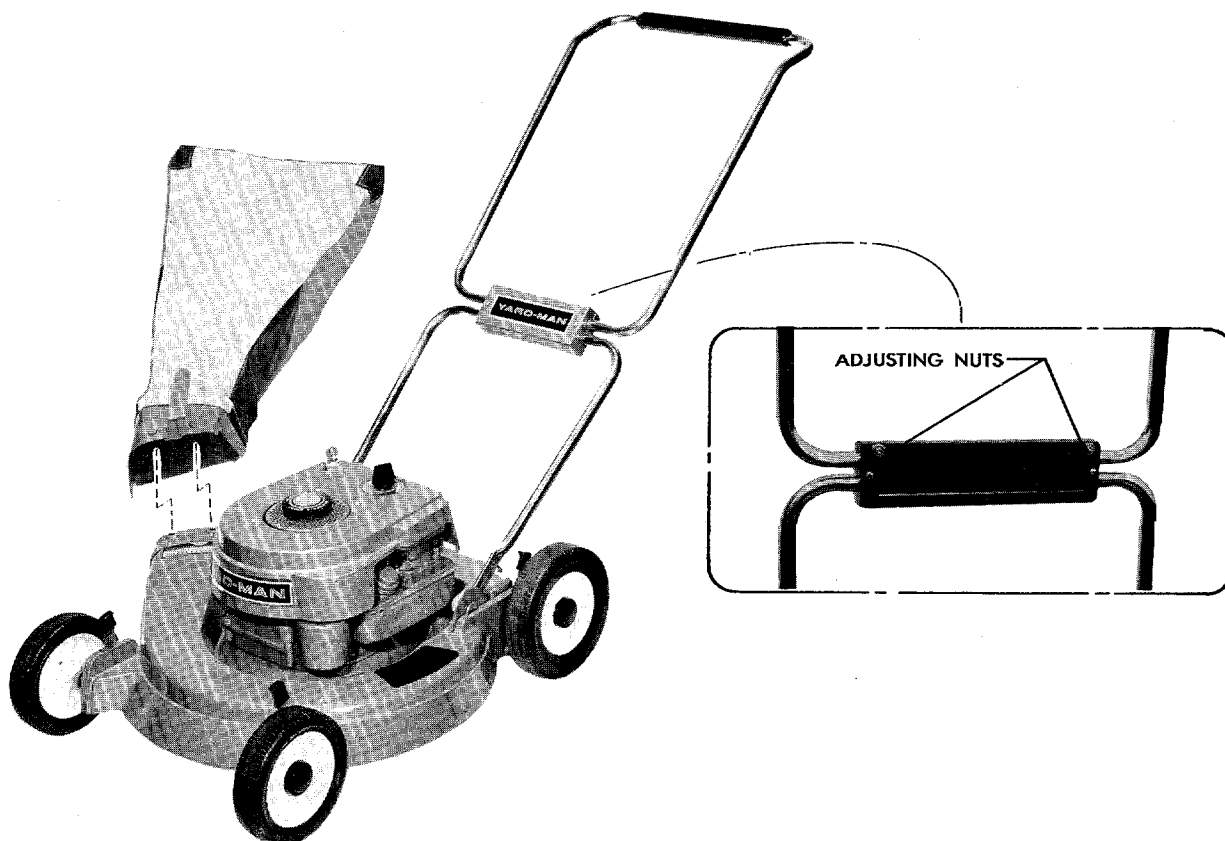
Your mower like all machines with moving parts must receive care and maintenance. The following tips, if used, will contribute many trouble-free hours to your mower.

1. Check oil level frequently. When changing oil, make sure dirt and debris cleaned off oil sump before removing oil plug.
2. Keep mower clean, especially the engine well and underside of mower housing.
3. Check all nuts, bolts and screws occasionally to be sure mower is in good operating condition.
4. Should excessive vibration develop, check your blade and crankshaft immediately. Do not operate mower with an unbalanced blade, a damaged blade or a damaged crankshaft.
5. The wheel bearings are pre-lubricated at the factory and should require no further attention until mower is serviced. However, it is advisable to remove the wheels and apply a small amount of light oil to each axle, at least once a season.
6. If you are going to store your mower for any length of time (30 days or longer) it is important that the following steps be taken:
  - a. Drain the gas tank and carburetor. Allow the engine to run out of gas, gasoline left in the engine will leave gum deposits in the carburetor and gas tank.
  - b. Clean engine of all foreign matter.
  - c. Lubricate cylinder by removing the spark plug and pouring one ounce of clean lubricating oil through the spark plug hole into the cylinder, Crank engine slowly to spread oil and replace spark plug.
7. Just as your automobile needs professional mechanical maintenance from time to time, so does your air cooled engine. A yearly tune-up and check by a qualified service center is recommended to avoid breakdowns and unnecessary delays during the cutting season.

### BATTERY CARE:

Your Yard-Man mower is equipped with a Briggs & Stratton battery starting system. The battery must be charged before initial use and continually thereafter.

A new battery is not fully charged when shipped and should be charged 20 to 24 hours before use. However, a 6 to 12 hour initial charge will permit a limited number of starts.



## PREPARING YOUR YARD-MAN MOWER FOR USE

### SET UP

Your Yard-Man mower is shipped in one carton completely assembled with the handle assembly in the shipping or storage position. To remove your mower from the carton, slit the end of the carton and roll the mower out. DO NOT attempt to lift the unit by the engine shroud.

To place the handle in operating position, lift the handle assembly until lower handle is in the operating position as shown. The upper handle can now be adjusted to the most comfortable position for mowing. After this position has been selected, tighten the two adjusting nuts on the back of the handle cover.

**IMPORTANT**—Use a wrench only—DO NOT use pliers.

### GRASS CATCHER

To assemble—place rear support rod into tubes provided on the front frame assembly. Then insert frame assembly into the bag through the zipper opening. Make sure the elastic in the mouth of the bag sets properly in the groove in the frame assembly. Attach to the mower by placing it over the discharge chute with the pins on the underside of the catcher opening locating into the holes in the mower discharge chute.

### BEFORE STARTING ENGINE

Remove oil fill plug and fill the crankcase with 1¼ pints of S.A.E. No. 30 oil.

Fill fuel tank with a good grade regular clean, fresh gasoline. DO NOT MIX OIL WITH GASOLINE. FOR COMPLETE ENGINE INFORMATION, READ ENGINE INSTRUCTION BOOKLET BEFORE STARTING ENGINE.

### TO RECHARGE BATTERY

An overnight charge will usually bring the battery up to full strength. If it is completely dead, it may take 24 hours to recharge the battery.

If an 110 volt electrical outlet is available near the mower when stored, charger may simply be plugged into the outlet.

The battery may also be removed from the mower and recharged. To do this, press the spring clips down—remove the battery. Unplug the cord from the battery, plug in the charger and recharge.

## TO START ENGINE

1. Move throttle control to start position or midway in run position.
2. Turn key to start position and hold until the engine starts—then release.

**IMPORTANT:** If engine floods, place throttle control knob in "Start" position and turn the engine over for about four or five seconds. Then reposition control lever to "Run" position and start engine.

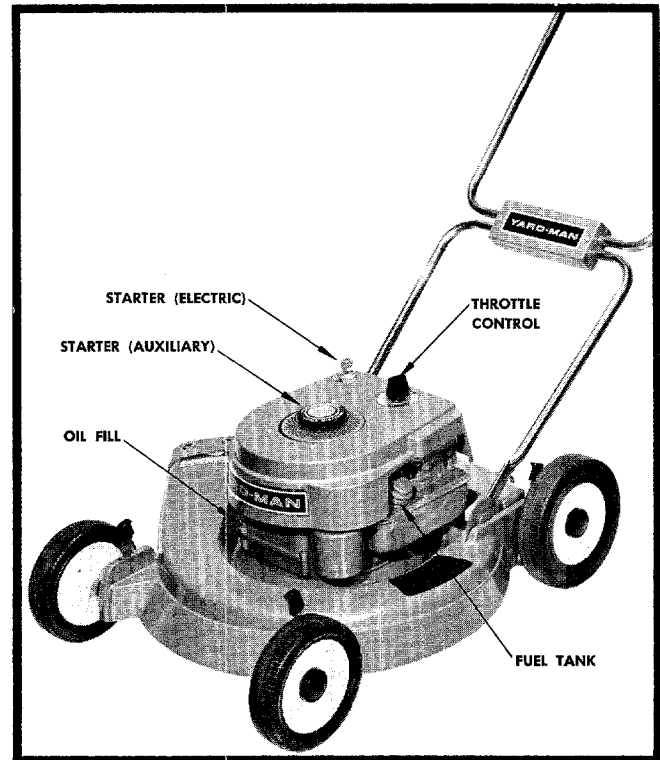
Engine flooding is usually caused by a dirty air cleaner. Service air cleaner regularly as noted in engine operation and maintenance instruction.

If engine continues to flood even with a clean air filter, lean carburetor adjustment screw 1/8 turn (See engine instructions)

### NOTE:

To stop the engine, turn key to "OFF" position. The engine may also be stopped by moving throttle control to "STOP" position.

For further information and instructions on operation and maintenance of the electric start, read the instructions supplied by the manufacturer.



## TO ADJUST HEIGHT OF CUT

The cutting height of your mower can easily be adjusted from low to high cut. Place your hand on the outside of the wheel, spring the adjusting lever, with your thumb, outward until the locating trunnion on the lever is free from the housing. Move the wheel and lever to the height of cut desired. Release the lever, allowing the trunnion to drop into the proper locating hole.

**CAUTION:** Do not make adjustments with the engine running.

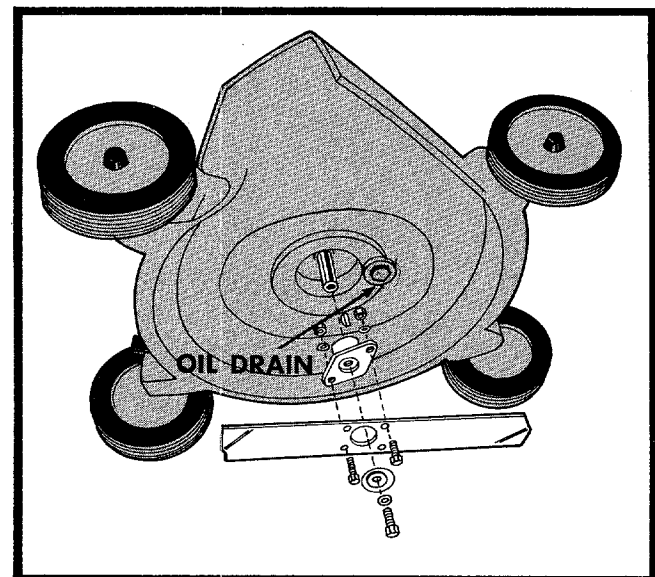
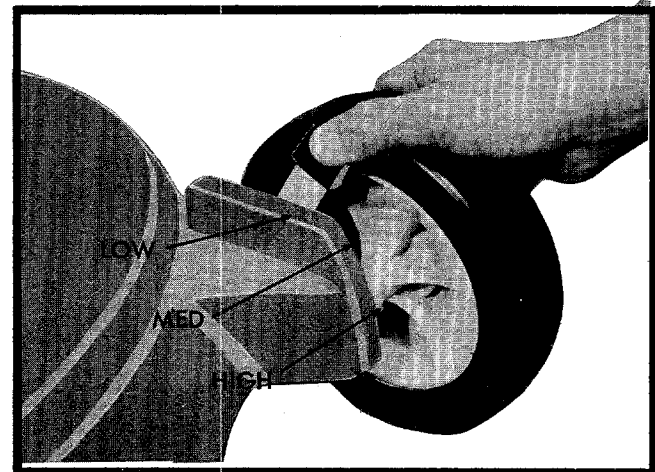
## TO CHANGE OIL

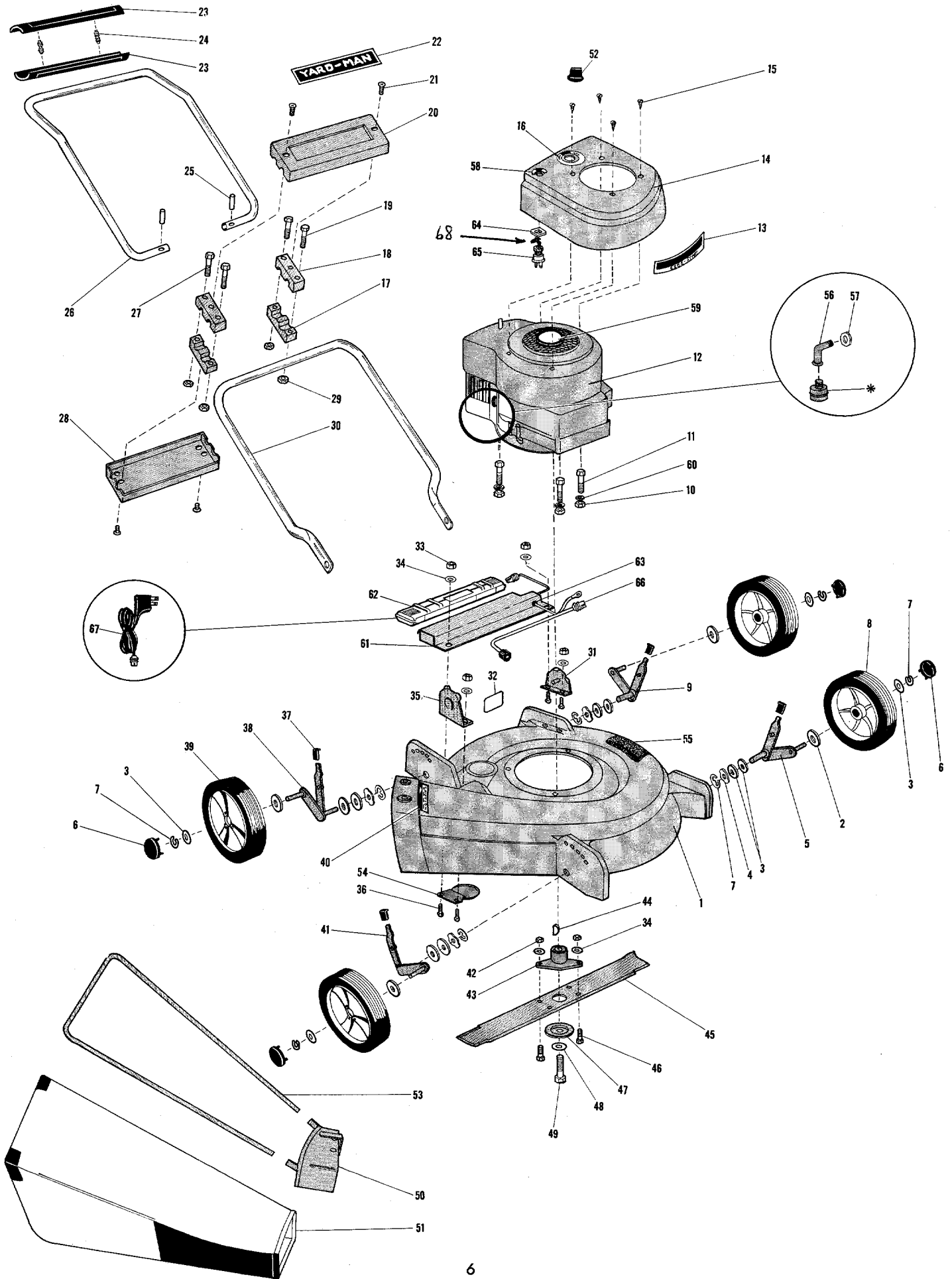
Engine oil should be changed after the first 5 hours of operation and each 20 hours of operation thereafter.

Drain oil while engine is warm. Disconnect spark plug wire and secure at least 1" away from spark plug. Block right hand side of mower up about 4" high and set shallow one quart container beneath oil drain. Remove oil drain plug from sump and allow oil to drain completely. Replace plug and refill with 1 1/4 pints S.A.E. #30 oil.

## TO REPLACE BLADE

1. Be sure engine is stopped, disconnect spark plug wire and secure at least 1" away from spark plug.
2. Tip mower on the side and remove the blade and adaptor from engine crank.
3. Remove the blade from the adaptor and replace with a new blade. Reassemble to engine.
4. Resharpening of an old blade should only be attempted by a qualified service center. This way proper blade balance will be maintained.





## PARTS LIST

### MODEL 2320-0

Your cutting unit is right hand (R.H.) or left hand (L.H.) as you cut.

REF. NO.	PART NO.	NAME OF PART	REF. NO.	PART NO.	NAME OF PART
1	6601-123-17	Blade Housing .....	34	1018	*Washer—Lock (¼ Split) .....
2	1540-86	Washer (½ I.D. x 1.0 O.D. x ⅛) ....	35	2132-86-17	Ass'y—Bracket & Pin (R.H.) .....
3	1540-90	*Washer (½ x 1.0 x .030) .....	36	1529-15	*Bolt (¼-20 x ⅝ Carriage) .....
4	1552-2	*Washer—Wave .....	37	2643-43	Knob—Adjust Lever .....
5	2123-31-17	Ass'y—Front Axle L.H. ....	38	2123-32-17	Ass'y—Rear Axle (R.H.) .....
6	2674-39-40	Hub Cap .....	39	2108-125-41	Ass'y—Wheel & Tire Rear (8 x 1.75) .....
7	1650-1	Retaining Ring .....	40	1616-299	Label—Caution .....
8	2108-124-41	Ass'y—Wheel & Tire (7 x 1.75) ....	41	2123-30-17	Ass'y—Front Axle (R.H.) .....
9	2123-33-17	Ass'y—Rear Axle (L.H.) .....	42	1538-8	*Nut (¼-20 Hex Hd. Lock) .....
10	1538-6	*Nut—Lock (5/16-18 Hex) .....	43	1143-5-17	Ass'y—Blade Adaptor .....
11	1509-32	*Bolt (5/16-18 x 1⅝ Hex Hd.) ....	44	1646-8	Key (#6 Woodruff) .....
12		Ass'y—Engine—B & S Model 92905 — Type 0840-01 .....	45	3604-39-17	Blade—Grass .....
13	2616-295	Label—Engine Shroud .....	46	1509-34	*Bolt (¼-20 x ¾ Hex Hd.) .....
14	3699-70-17	Shroud—Engine .....	47	1543-39	Washer—Special .....
15	1526-1	Screw—Shroud Retaining .....	48	1542-8	*Lockwasher (¾ Split) .....
16	1616-297	Label—Dial Control .....	49	1509-101	*Bolt (¾-24 x 1⅝ Hex Hd. Lock) ....
17	2609-317	Bracket—Handle Rear .....	50	3168-38-17	Ass'y—Frame .....
18	2609-316	Bracket—Handle Front .....	51	4670-12	Bag—Grass Catcher .....
19	1509-41	*Bolt (5/16-18 x 1¼ Hex Hd.) .....	52	2643-44	Knob—Throttle Control .....
20	3622-92-17	Cover—Front .....	53	4753-5	Rod—Rear Support .....
21	1117	Screw (10-32 x ⅜ Phillips Hd.) ....	54	2556-18	Deflector—Muffler .....
22	1616-298	Label—Handle Cover .....	55	2662-21	Pad—Foot .....
23	2710-40	Grip—Handle .....	56	1756-4-17	Elbo—Exhaust .....
24	1547-35	Pin—Special .....	57	1539-67	Nut—Elbo Retaining .....
25	1548-5	Roll Pin .....	58	1616-373	Label—Key Switch .....
26	3712-70-01	Handle—Upper .....	59	1616-375	Label—Aux. Starter .....
27	1509-50	*Bolt (5/16-18 x 1¾ Hex Hd.) .....	60	159	Washer (5/16 ID. x ⅝ OD. x 1/16)
28	3622-95-17	Cover—Rear .....	61	2118-43-17	Ass'y—Cover & Clips .....
29	1538-25	*Nut—Hex (5/16-18 Lock) .....	62		Battery—B & S No. 390123 .....
30	3712-69-01	Handle—Lower .....	63	1657-44	Bushing (Grommet) .....
31	2132-87-17	Ass'y—Bracket & Pin (L.H.) .....	64	1543-44	Washer (Special) .....
32	1605-435	Name Plate .....	65	2160-11	Switch—Electric Start .....
33	1538-19	*Nut (¼-20 Hex Lock) .....	66	2188-10	Ass'y—Wire Harness .....
			67	1772-1	Ass'y—Battery Charger .....

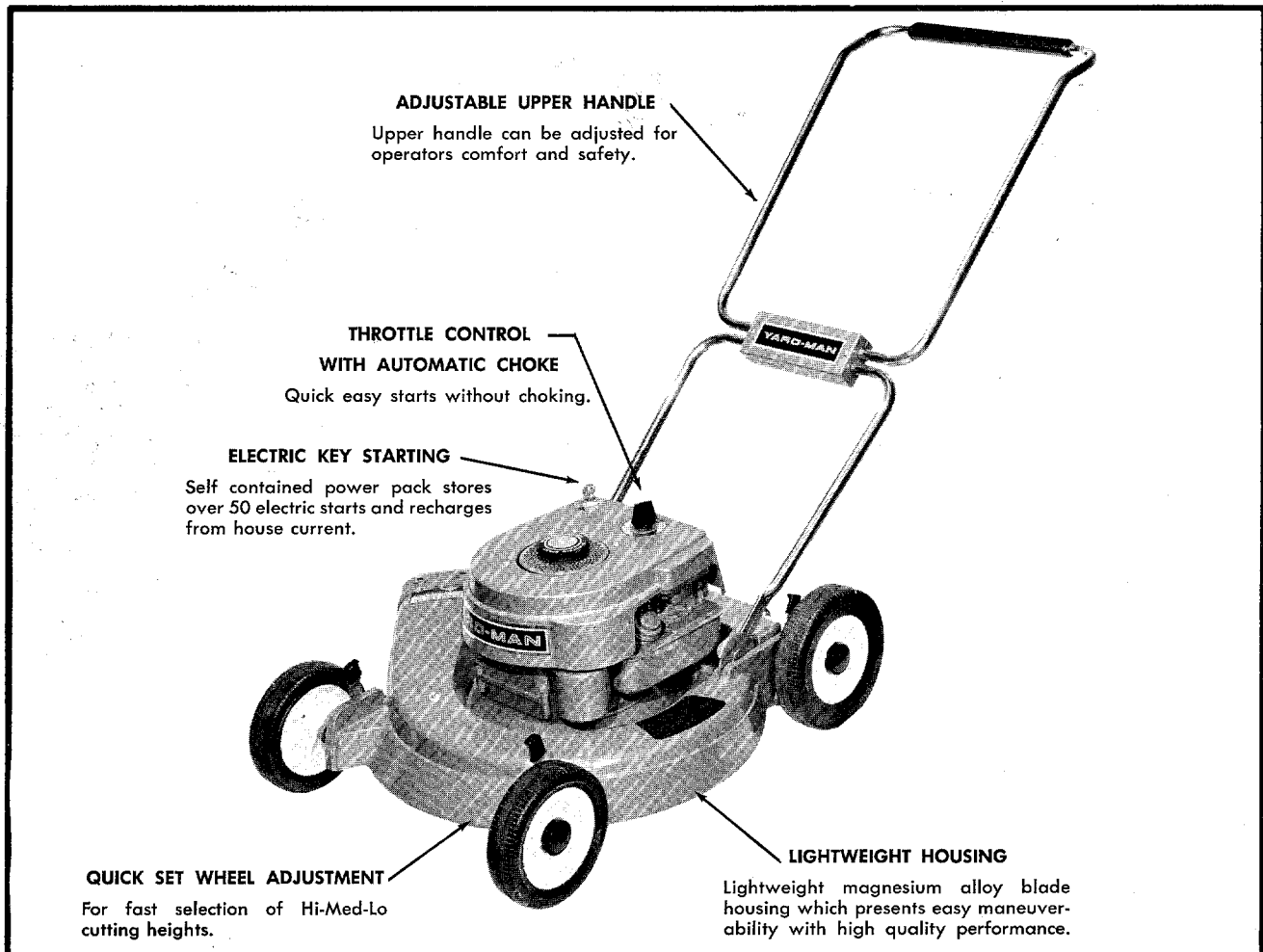
For Illustration See Page 6.

*68 1646-38 IGNITION KEY*  
\*Standard Hardware Item, May Be Purchased Locally.

# When you own this - - **YARD-MAN**

**20" ROTARY MOWER  
(ELECTRIC START)**

## you enjoy these outstanding features



## WARRANTY

This YARD-MAN unit is guaranteed for one year from date of purchase (90 days when used commercially) against defects in workmanship or material under normal use and service.

We agree to repair or replace without charge to the purchaser, including labor, any part proven to be defective within the warranty period, except the Engine which is the responsibility of the Engine manufacturer.

Parts for this YARD-MAN unit will be available for at least ten years from the date of purchase. This warranty will not apply to a unit which has been subjected to—misuse, negligence, an accident, or to a unit which has been altered in any way.

**YARD-MAN INC**

JACKSON, MICHIGAN