

# OPERATING INSTRUCTIONS AND PARTS LIST

STOCK NO.

8D-384

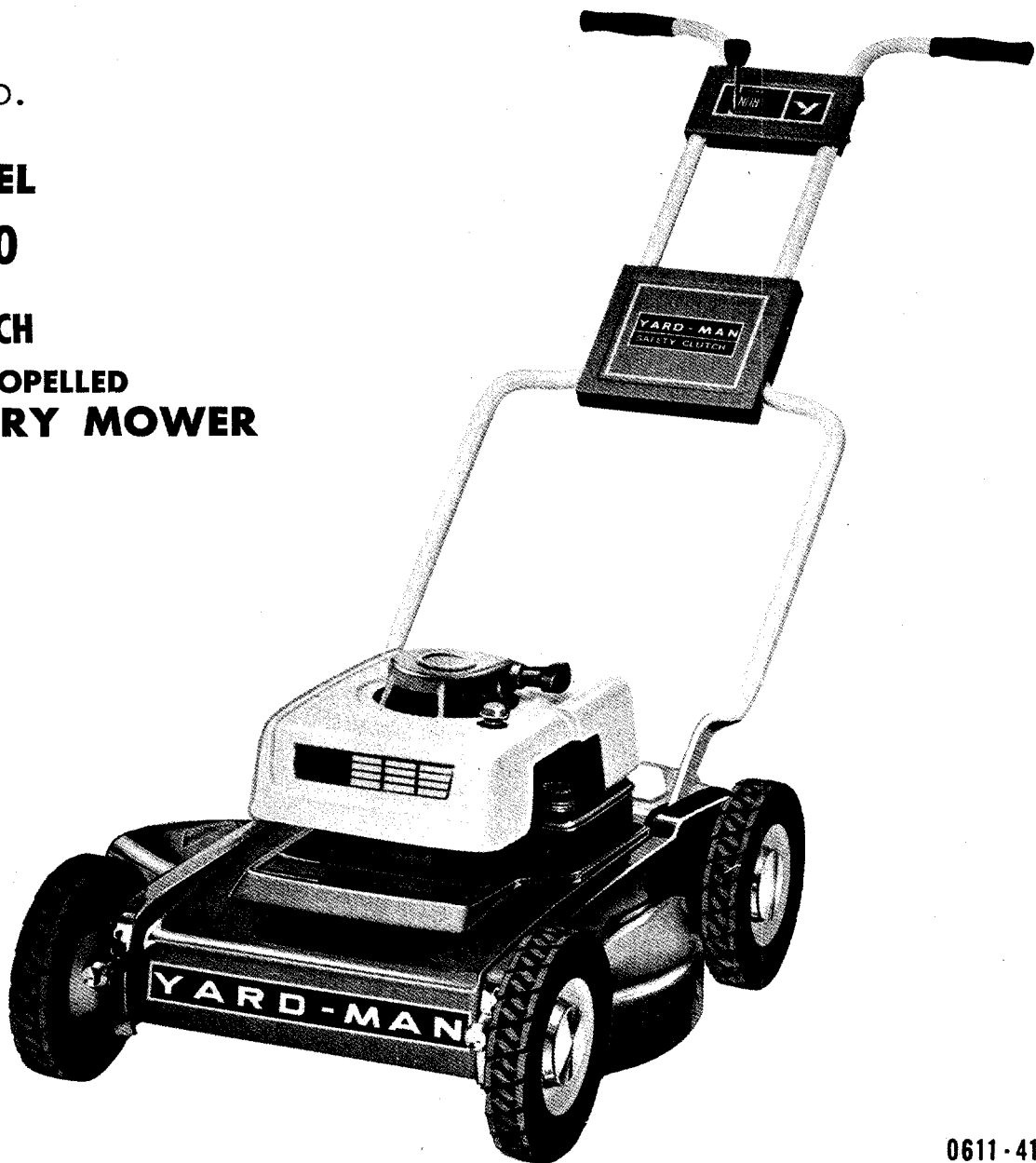
**MODEL**

**2210-0**

**22 INCH**

**SELF-PROPELLED**

**ROTARY MOWER**



PRINTED IN U.S.A.

0611-412-A

**YARD-MAN** Incorporated 1410 W. Ganson St., Jackson, Michigan

BUILDERS OF THE ORIGINAL SILENT YARD-MAN LAWN MOWER

## RULES FOR SAFE OPERATION

Your Rotary Mower is a precision piece of power equipment, not a plaything. Therefore exercise extreme caution at all times.

1. Remove all sticks, stones, wire, and other hazardous items from lawn before mowing. Such items are dangerous to both the mower and individuals in the vicinity of the mower.
2. Always disconnect spark plug cable during repair or refueling operations.
3. Always start engine from side opposite discharge chute.
4. NEVER place hands or feet under mower or near discharge chute while engine is running.
5. Do not tilt mower at extreme angle while engine is running. Cut grass on hills and banks sideways, not up and down.
6. Always stop engine when not cutting grass.
7. Be sure minors are thoroughly instructed in correct operation and are properly supervised while using this mower.
8. Do not fill gas tank while engine is running. Do not spill gasoline on hot engine.
9. Keep children and pets away from area at all times during mowing operation. Never allow mower to discharge grass toward any person.
10. Do not attempt to start engine while mower is resting in high grass.

Note: Should excessive vibration develop, check your blade and crankshaft immediately. Do not operate mower with an unbalanced blade, a damaged blade or a damaged crankshaft.

## SUGGESTIONS FOR MORE EFFICIENT, AND MAINTENANCE-FREE OPERATION

### GENERAL MOWING:

1. Keep your lawn clear of rocks, stones, or any other objects that may be hit by mower blade, resulting in injury to persons, or damage to property or mower.
2. Always keep mower blade "Knife" sharp and balanced for maximum cutting efficiency.
3. Always start engine with mower on level surface where blade will not drag on tall grass or other obstructions. After starting, let engine warm up several minutes at slow speed before starting to mow.
4. When mowing under normal conditions, without grass catcher, run mower at 1/2 to 3/4 throttle for best results.
5. When cutting tall heavy growth, or on rough ground, place mower in highest cut position and gradually reduce to desired cutting height over course of two or three mowings.
6. Check oil level frequently and keep all screws and bolts tightened securely.
7. Keep mower clean (especially top engine well and underside of mower housing.)

### USING GRASS CATCHER:

1. When using grass catcher, operate mower engine at 3/4 to full throttle and move mower slowly.
2. In heavy dense turf, set cutting height in medium to high position.
3. Allow wet grass to dry before attempting to mow with grass catcher attached.
4. Empty catcher bag thoroughly before storage.

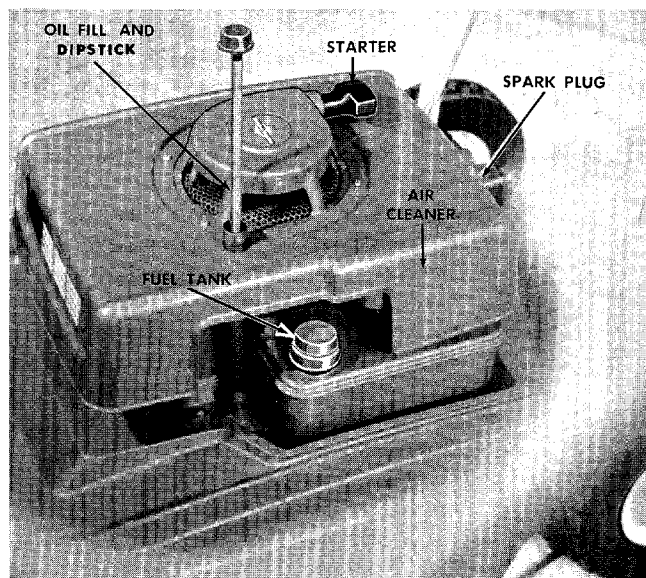
### LAWN CARE:

1. It is not advisable to cut off more than 1/3 of the total length of the grass at any one mowing.
2. When mowing thick, lush or wet grass, start at outside of lawn and mow in counter-clockwise direction to prevent mower from recutting clippings from previous rounds.
3. When mowing thin or dry grass, start at outside of lawn and mow in clockwise direction to progressively discharge clippings to center of lawn where they can easily be removed.
4. Recommended normal cutting heights for different types of grass:

1½ to 2½ — Med. to Med. High	Marion blue grass
1½ to 2½ — Med. to Med. High	Kentucky blue grass
1 to 2 — Med.-Low to Med.	Fescues
1 to 2 — Med.-Low to Med.	Rye grass
1 to 1½ — Low to Med. Low	Bermuda
1 to 1½ — Low to Med. Low	Zoysia
1 to 2 — Med.-Low to Med.	Bent grass

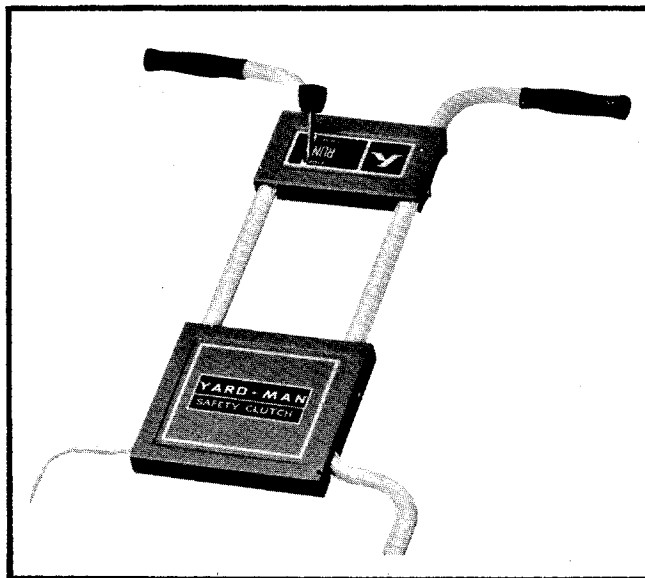
## BEFORE STARTING ENGINE

1. Remove oil dipstick and fill crankcase with 1½ pints S.A.E. No. 30 oil, replace dipstick securely.
2. Fill fuel tank with good grade regular, clean, fresh gasoline DO NOT MIX OIL WITH GASOLINE. FOR COMPLETE ENGINE INFORMATION, READ ENGINE INSTRUCTION BOOKLET BEFORE STARTING OR OPERATING.



## STARTING ENGINE

1. ALWAYS LOWER SAFETY CLUTCH PEDAL TO DIS-ENGAGE BLADE BEFORE STARTING ENGINE.
2. Move hand throttle to choke position.
3. Pull starter rope with quick, full stroke once. Move hand throttle to fast position and pull starter rope again.
4. When engine starts, move hand throttle to "IDLE" position until engine warms up.

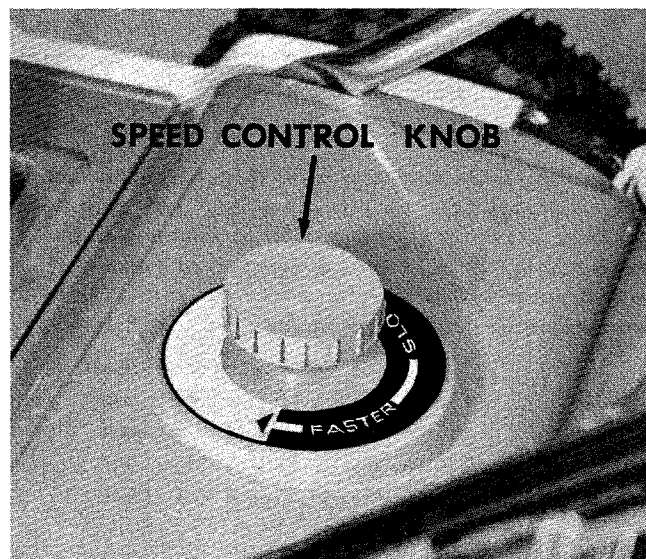


## OPERATING INSTRUCTIONS

TO PROPEL MOWER FORWARD, simply raise the handle . . . TO STOP MOWER, lower the handle.

## SPEED CONTROL

The forward speed of your mower can be adjusted as desired. To adjust speed, lower the handle to stop mower and turn speed control knob CLOCKWISE for faster speed or COUNTER-CLOCKWISE for slower speed.



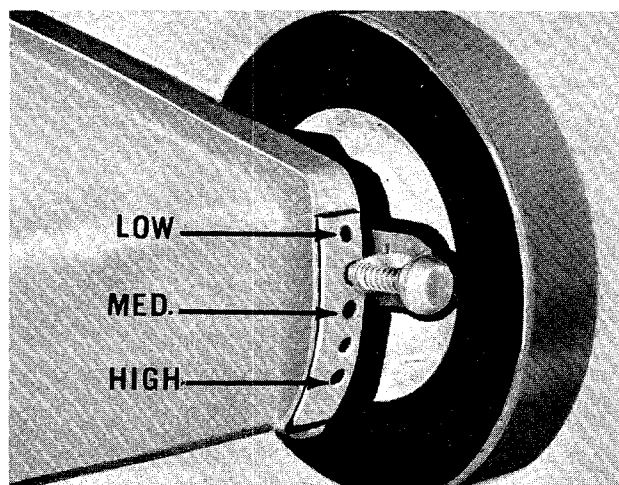
## HEIGHT OF CUT ADJUSTMENT

The cutting height of your mower can easily be adjusted from low to high cut. **DO NOT MAKE ADJUSTMENTS WITH ENGINE RUNNING.**

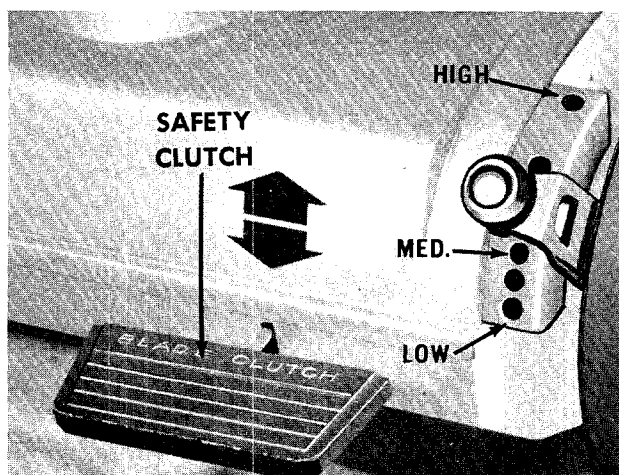
### TO ADJUST CUTTING HEIGHT

1. Pull out plungers on front wheel adjust levers and move levers **DOWN** for higher cut or **UP** for lower cut as shown and release plungers. Be sure plungers are firmly seated in adjustment holes.

2. Pull out plungers on rear wheel adjust levers and move levers **UP** for higher cut, or **DOWN** for lower cut as shown and release plungers. Be sure plungers are firmly seated in adjustment holes.



FRONT WHEEL



REAR WHEEL



## BLADE CLUTCH

The blade clutch provides the utmost safety in mower operation, **ALWAYS DISENGAGE CLUTCH** before starting engine. To engage blade clutch with maximum ease and efficiency follow these simple steps

1. Tilt mower back slightly on rear wheels.
2. Move to right of mower as shown, place left foot under clutch pedal and "flip" pedal upward.
3. The blade clutch engages gradually within 2 or 3 seconds to prevent unnecessary wear. Allow engine to regain normal speed before lowering front wheels and mowing.
4. To disengage clutch, step to right of mower as shown and with left foot, press pedal downward.

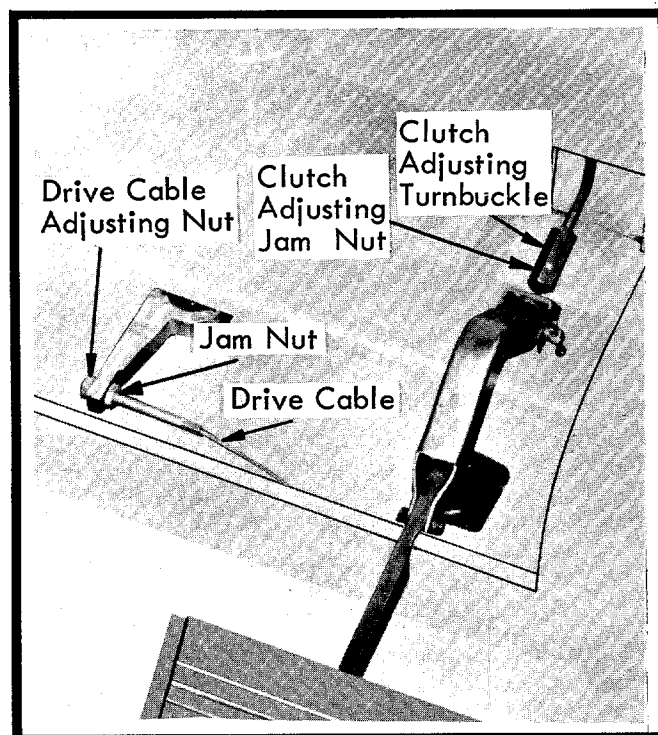
## TO ADJUST PROPELLING UNIT

As propelling unit "wears-in" it is possible that handle may have to be lifted higher to engage propelling unit. To reduce the amount of handle travel required remove rear cover from propelling unit at rear of mower and turn drive cable adjusting nut COUNTER-CLOCKWISE 1 or 2 turns. Then tighten jam nut by turning CLOCKWISE to lock adjustment securely.

## TO ADJUST BLADE CLUTCH

If blade slips under load, adjust clutch as follows:

Remove rear cover from propelling unit. Loosen clutch adjusting jam nut. Rotate clutch adjusting turnbuckle  $\frac{1}{4}$  turn clockwise from operators position. Hold turnbuckle in position and tighten jam nut securely.



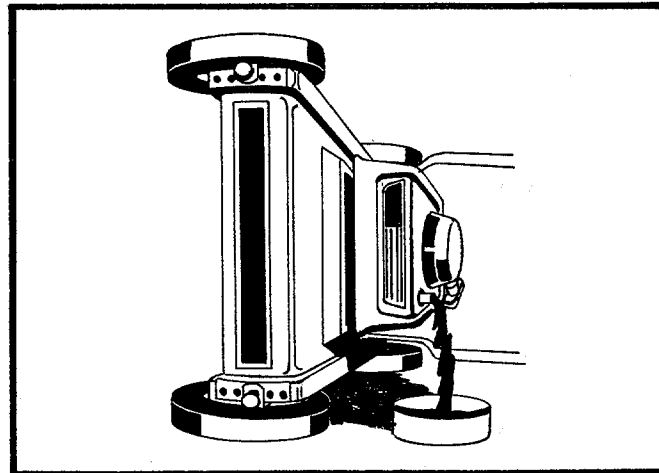
## LUBRICATION AND MAINTENANCE

All wheel bearings are pre-lubricated at the factory and require no further attention until mower is serviced.

Engine oil should be changed after the first 5 hours of operation and each 20 hours of operation thereafter.

## TO CHANGE OIL

Oil should be drained while engine is warm. Disconnect spark wire and secure at least 1" away from spark plug. Drain gasoline from fuel tank, remove oil dipstick and tilt mower on it's left side to allow oil to drain completely into a small can as shown. After draining, refill crankcase with  $1\frac{1}{4}$  pints S.A.E. No. 30 oil and replace dipstick securely.



The air cleaner protects the engine against grit and dirt. Extremely dirty air cleaner element may cause engine to stall. SEE ENGINE INSTRUCTION MANUAL FOR PROPER AIR CLEANER MAINTENANCE.

## BREAK-IN PERIOD

During the first ten hours of operation, check the following items frequently.

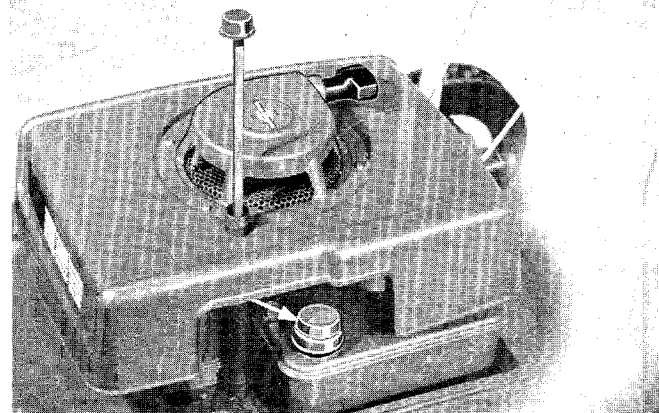
### OIL LEVEL

Check oil level by removing dipstick.

### SAFETY CLUTCH ADJUSTMENT

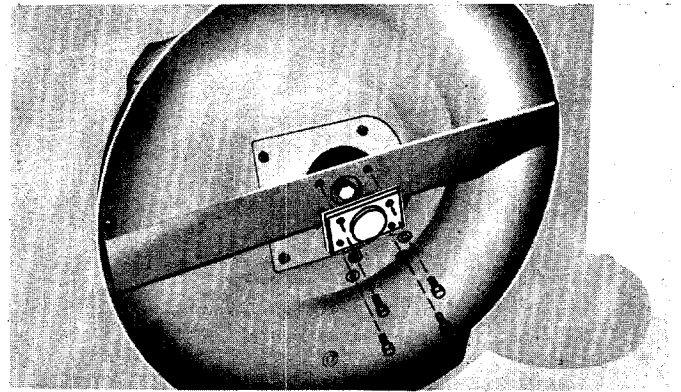
(See safety clutch adjustment.)

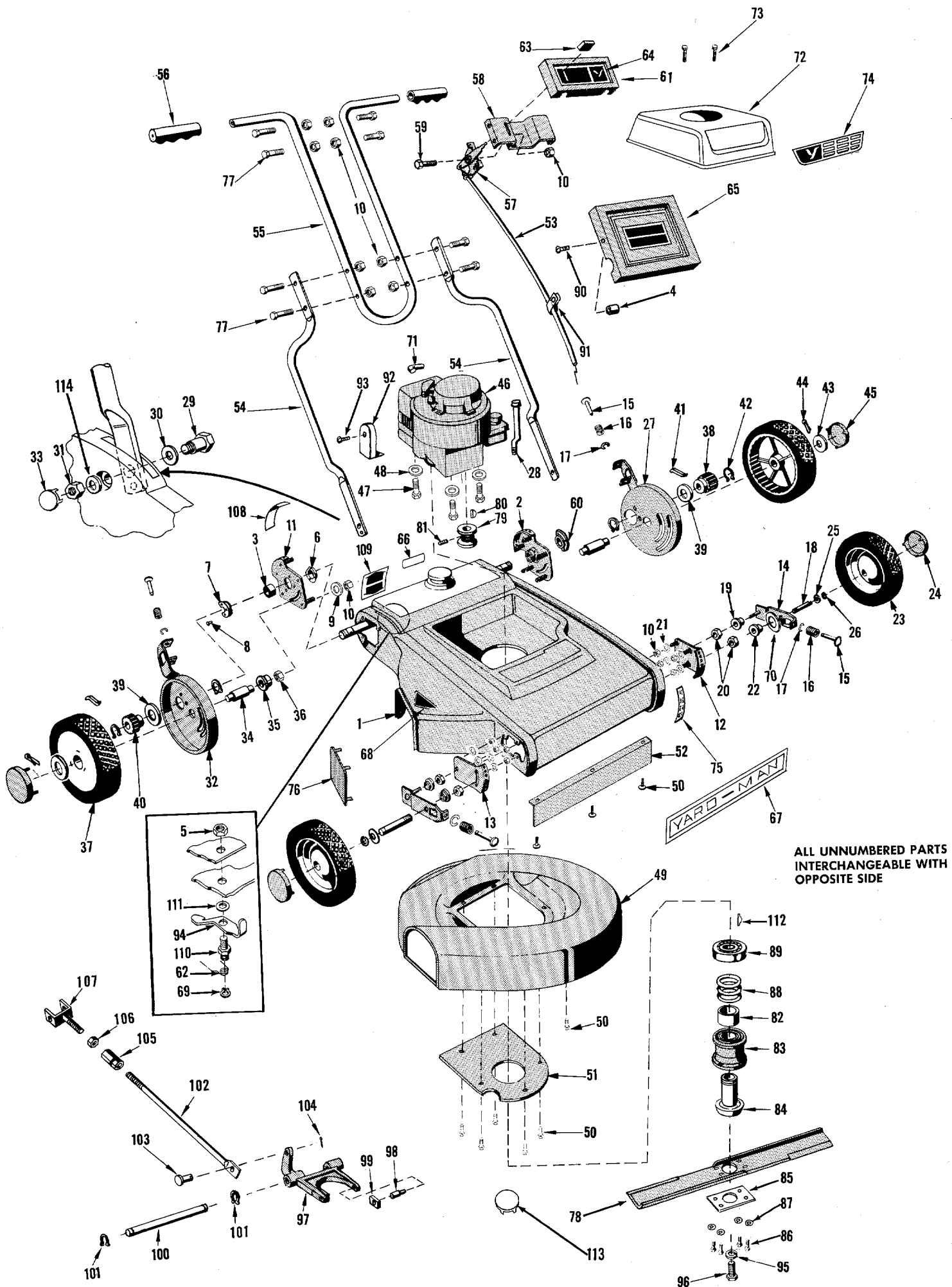
CHECK ALL BOLTS, NUTS AND SCREWS FOR TIGHTNESS.



## **TO REPLACE BLADE**

1. Be sure engine is stopped, disconnect spark plug wire and secure at least 1" away from spark plug.
2. Tip mower with carburetor side up.
3. Remove blade bolts and washers.
4. Remove blade and replace with a new one.
5. Sharpen dull blade maintaining proper balance.





# PARTS LIST

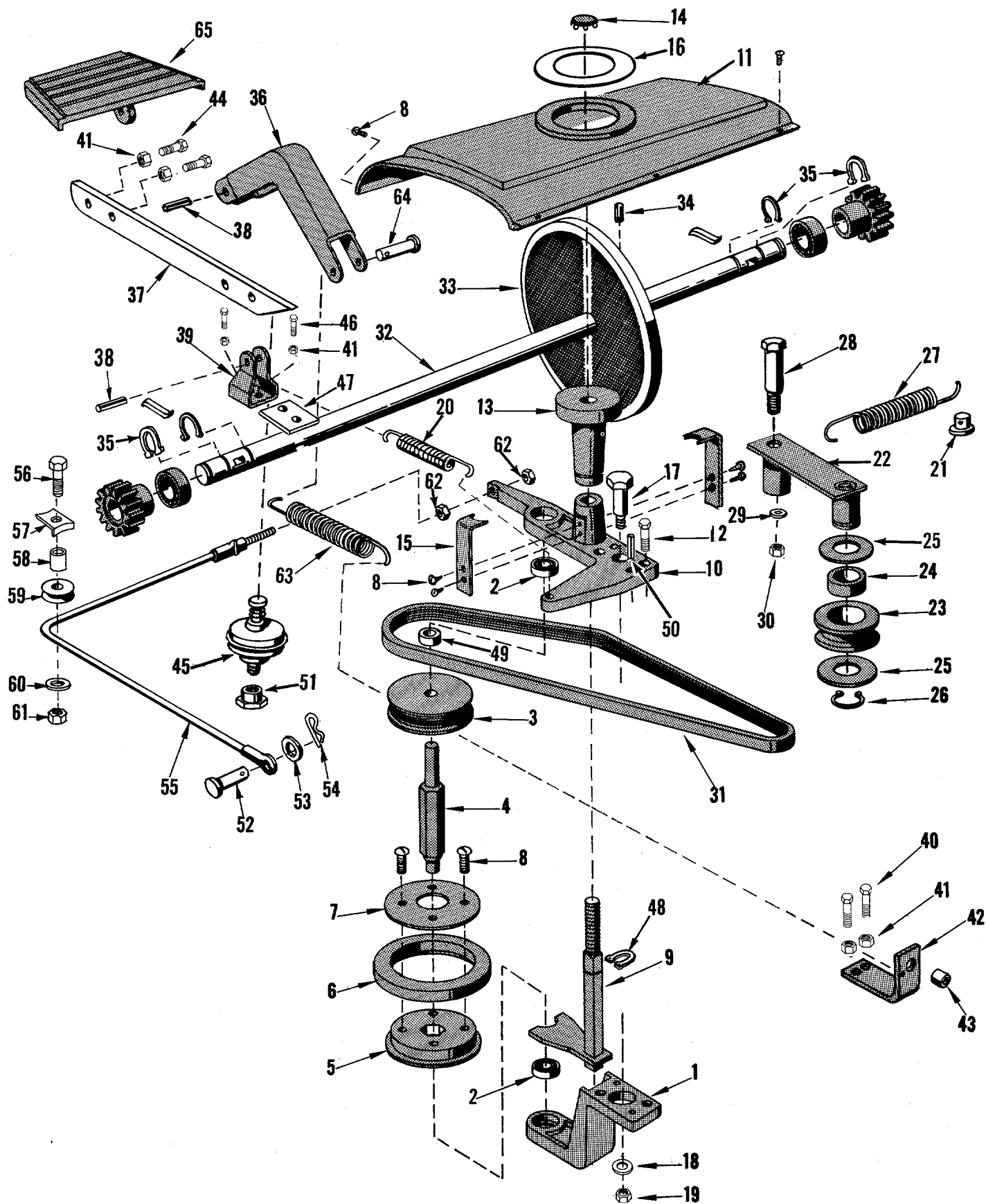
MODEL 2210-0

Your Mower is right hand (R.H.) or left hand (L.H.) as you mow.

REF. NO.	PART NO.	NAME OF PART	REF. NO.	PART NO.	NAME OF PART
1	6601-105-17	Housing—Blade	53	0171-29	Conduit and Wire
2	2111-69-17	Assembly—Plate-wheel adjust— L.H. Rear	54	4712-47-41	Handle—Lower
3	1652-13	Bearing—Rear Drive	55	4712-45-41	Handle—Upper
4	1624-152	Spacer	56	1710-15	Grip—Handle
5	1537-3	*Nut (1/4-20 Hex. Lock)	57	2142-56	Throttle Control
6	1629-50	Retainer—Bearing	58	3609-264-17	Bracket—Throttle Control
7	1182-5	Assy—Retainer & Spacer R.H.	59	1509-74	*Bolt (1/4-20 x 3/8 Hex. Hd.)
8	9	Rivet (3/16 dia. x 13/32)	60	1182-4	Retainer Assy—L.H.
9	1540-81	Washer (17/64 I.D. x 3/4 O.D. x 16 GA.)	61	2118-28-17	Cover—Throttle Control
10	1538-8	*Nut (1/4-20 Hex. Lock)	62	1642-75	Spring
11	2111-70-17	Assembly—Plate—Wheel Adjust R.H. Rear	63	1643-34-40	Knob
12	2111-71-17	Assembly—Plate—Wheel Adjust L.H. Front	64	1616-186	Label—Throttle Control
13	2111-72-17	Assembly—Plate—Wheel Adjust R.H. Front	65	3500-225	Cover—Handle
14	1113-30-17	Lever—Wheel Adjust	66	1605-313	Name—Plate
15	1547-9	Pin—Adjusting	67	2616-183	Yard-Man Label
16	1642-18	Spring—Pin Actuating	68	1616-138	Label—Caution
17	1650-10	Ring—Retaining	69	1650-31	Ring—Retaining
18	1631-5	Axle—Wheel	70	1540-84	Washer—Axle to Plate
19	1657-10	Bushing—Pivot & Wheel Adjust	71	1624-126	Sleeve—Spark plug wire
20	41-028	*Nut (5/16-24 Hex. Hd.)	72	4699-64-41	Shroud—Engine
21	1540-81	Washer—(17/64 x 3/4 x #16 GA.)	73	1511-23	Screw (#6 x 1/4 Thd. Cut "Sems")
22	1657-7	Bushing—Axle to Adjusting Plate	74	2616-141	Label—Shroud
23	1108-100-41	Assembly Wheel & Tire—Front	75	1616-193	Label—Wheel Adjust Front
24	2674-32-01	Hub Cap—Front	76	3104-6-17	Mulcher Plate
25	39-012	Washer—Axle (1/2 x 1" x .058)	77	1509-90	*Bolt (1/4-20 x 1 1/4 Hex. Hd.)
26	1650-1	Ring	78	3604-40-01	Blade
27	2118-23-17	Assy—Cover & Adjusting Lever L.H.	79	1626-60	Pulley
28	0170-3	Oil Dipstick Assy	80	1009	Key
29	1513-54	Bolt Special	81	1508-14	Set Screw
30	1552-9	Wave Washer	82	1652-62	Bearing
31	41-028	Nut (5/16-24 Hex. Lock)	83	2601-106	Clutch Housing
32	2118-22-17	Assy—Cover & Adjusting Lever R.H.	84	1145-12	Assy—Sleeve, Ring & Plug
33	159	*Washer (5/16 x 5/8 x 1 1/16)	85	2622-78	Blade Cover
34	1631-26	Axle—Wheel	86	1509-94	Bolt (1/4-20 x 9/16 Hex. Hd.)
35	1657-7	Bushing	87	1018	Lockwasher
36	1538-23	*Nut—Lock (5/16-24 Hex. Lock)	88	1642-70	Spring
37	1108-101	Assembly Wheel & Tire—Rear	89	1652-65	Bearing—Blade Clutch
38	425	Pinion—L.H.	90	1511-18	*Screw (#10-32 x 3/8 Thd. Cut)
39	109	Washer—Felt	91	1689-2	Cable—Clamp
40	428	Pinion—R.H.	92	2189-2-47	Muffler Extension
41	323	Pawl	93	1511-30	*Screw (#8-32 x 3/8 Thd. Cut)
42	1650-21	Ring—Retaining	94	1609-262	Bracket
43	141	*Washer	95	1076	Lockwasher (3/8 Split)
44	142	Cotter Pin—Wheel Retaining	96	1509-24	*Bolt (3/8-24 x 1 1/2 Hex. Hd.)
45	2674-33-01	Hub Cap	97	2678-17	Yoke
46		Engine Ass'y B & S Model # 82992 Type 0203-01	98	1645-15	Trunnion
47	1513-56	Bolt—Engine Mounting (3/8-16 x 1 1/2 Hex. Hd. "Tap-Tite")	99	1704-5	Brake Shoe
48	1076	Washer—Lock—Split	100	1547-27	Pivot Pin
49	2162-6-17	Assembly—Grass Baffle	101	1650-8	Retaining Ring
50	1117	*Screw (#10-32 x 3/8 Thd. Cut)	102	2683-51	Clutch Rod
51	2606-75-17	Plate—Baffle Access	103	1545-11	Clevis Pin
52	2602-28-17	Comb—Front (Stamping)	104	3-88	Cotter Pin
			105	1539-45	Nut
			106	1534-23	*Nut (1/4-28 Hex.)
			107	1132-61	Adjusting Bracket
			108	1616-194	Label—WHL. HDJ. — Rear
			109	1616-197	Label—Clutch
			110	1513-60	Bolt—Special
			111	1540-23	Washer
			112	1646-8	Key
			113	1649-38	Plug
			114	159	*Washer

For Illustration—See Page





# PARTS LIST

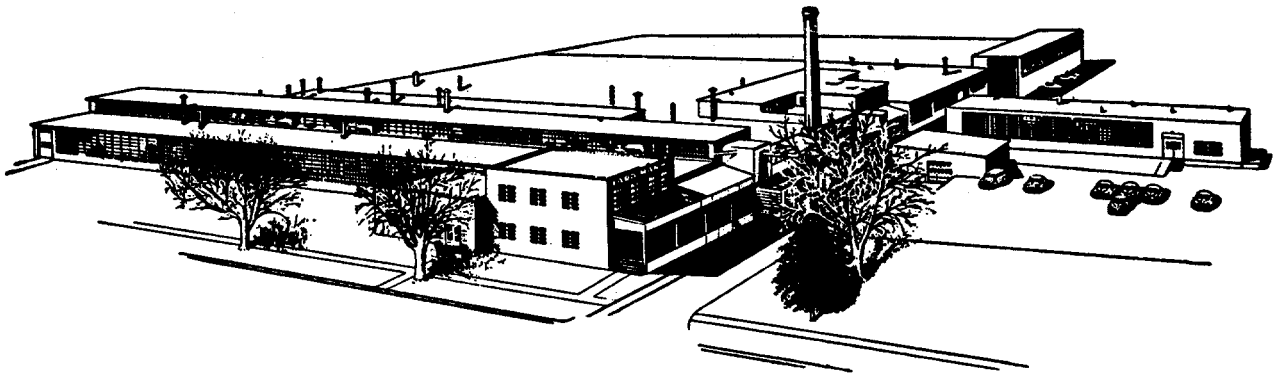
## MODEL 2210-0

Your Mower is right hand (R.H.) or left hand (L.H.) as you Mow.

REF. NO.	PART NO.	NAME OF PART	REF. NO.	PART NO.	NAME OF PART
1	2678-18	Yoke—Lower .....	30	1538-13	* Nut—Lock (3/8-16 Hex. Lock) .....
2	1652-64	Bearing .....	31	1651-36	Belt—Poly-"V" ("J" Section 4 rib) .....
3	1626-59	Pulley—Poly-V "J" Section— Hex. Drive .....	32	2632-113	Shaft—Rear Wheel Drive .....
4	1632-111	Shaft—Ring Drive .....	33	2675-16	Disc—Friction Drive .....
5	1644-65	Hub—Friction Ring .....	34	1548-12	Pin—Disc to Drive Shaft .....
6	1607-12	Ring—Friction .....	35	1650-21	Ring—Shaft Retaining .....
7	1607-10	Ring—Retaining Friction Ring .....	36	2625-20	Clutch Link .....
8	1117	* Screw—(#10-32 x 7/16 "Sems" Phillips Hd.) .....	37	2680-43	Arm .....
9	1119-40	Assembly Yoke & Shaft .....	38	1548-20	Roll Pin .....
10	3678-19	Yoke—Upper .....	39	2609-248	Bracket .....
11	3622-72-41	Cover—Rear .....	40	1509-35	Bolt (1/4-20 x 5/8 Hex. Hd.) .....
12	1509-74	* Bolt (1/4-20 x 5/8 Hex. Hd.) .....	41	1538-8	Nut (1/4-20 Hex. Lock) .....
13	1643-30	Knob—Speed Change .....	42	1609-249	Bracket .....
14	1649-24	Plug—Button .....	43	1657-28	Bushing .....
15	1609-252	Bracket—Knob Retaining .....	44	1509-34	* Bolt (1/4-20 x 3/4 Hex. Hd.) .....
16	1616-172	Label .....	45	1133-5	Actuator Assy .....
17	1513-50	Bolt—Shoulder Yoke to Housing .....	46	1016	* Bolt (1/4-20 x 5/8 Hex. Hd. Thd. Cutting) .....
18	1008	* Washer—(13/32 x 13/16 x 1/16) .....	47	1609-284	Bracket—Arm Stop .....
19	1538-13	* Nut (3/8-16 Hex. Lock) .....	48	1650-1	Ring Retaining .....
20	1642-72	Spring Yoke Actuating .....	49	1540-80	* Washer (1/2 x 11/16 x 3/32) .....
21	1545-11	Pin—Clevis Spring Mounting .....	50	1548-21	Roll Pin (3/16 x 3/32) .....
22	1132-63	Assembly Idler Bracket & Spacer .....	51	1539-47	Nut—Special .....
23	1626-61	Pulley—Idler Poly-V "J" Section .....	52	1545-11	Pin—Clevis (1/4 x 1/2) .....
24	1652-18	Bearing—Idler Tension .....	53	1540-61	* Washer (1/4 x 1/2 x 1/16) .....
25	1543-16	Washer—Thrust (Sintered Bronze) .....	54	1547-4	Hairpin .....
26	1650-9	Ring—Retaining (Tru-Arc #5133-62) .....	55	2127-6	Assy—Clutch Cable .....
27	1642-71	Spring—Idler Tension .....	56	1509-88	* Bolt (10-32 x 11/16 Hex. Hd.) .....
28	1513-58	Bolt—Shoulder Idler Pivot (3/8-16 Shoulder) .....	57	1629-34	Retainer—Cable .....
29	1076	* Washer—Lock Idler Pivot (3/8 Split) .....	58	1624-46	Spacer .....
			59	1626-37	Pulley .....
			60	1097	* Washer .....
			61	1534-8	* Nut (#10-32 Hex. Lock) .....
			62	1534-1	* Nut (#10-32 Jam) .....
			63	1642-60	Spring .....
			64	41-049	Pin—Clevis (1/4 x 1 1/8) .....
			65	2663-12-40	Pedal—Clutch .....
			66	3622-72-41	Cover—Rear .....
			67	1616-172	Label .....

For Illustration—See Page 9

\*Standard Hardware Item—May Be Purchased Locally



"You are cordially invited to visit  
our plant at any time."

**YARD-MAN** Incorporated 1410 W. Ganson St., Jackson, Michigan

BUILDERS OF THE ORIGINAL SILENT YARD-MAN LAWN MOWER