

OWNERS OPERATING MANUAL

and PARTS LIST

Stock # 8D-384

MODEL 2210-1
22 INCH
SELF-PROPELLED
ROTARY MOWER



YARDMAN CO.
P. O. BOX 36900
5965 GRAFTON ROAD
CLEVELAND, OHIO 44136



0611-437-B

PRINTED IN U.S.A.

YARD-MAN Incorporated 1410 W. Ganson St., Jackson, Michigan

BUILDERS OF THE ORIGINAL SILENT YARD-MAN LAWN MOWER

RULES FOR SAFE OPERATION

Your rotary is a precision piece of power equipment, engineering skill and experience have been combined to provide the ultimate in safety and efficiency. However, as with any type of power equipment, carelessness or error on the part of the operator can result in injury. Therefore, exercise extreme caution at all times.

1. **KNOW YOUR MACHINE** Read the Owner's Manual carefully - learn how to operate your mower properly.
2. **MAKE SURE THE LAWN IS CLEAR** of sticks, stones, wire and other hazardous items from lawn before mowing. Such items are dangerous to both the mower and individuals in the vicinity of the mower.
3. **ADD FUEL** before starting engine - - - never when engine is hot or running.
4. **ALWAYS STOP ENGINE** and disconnect sparkplug wire before attempting any repairs or adjustments.
5. **START THE ENGINE CAREFULLY** Always stand at side opposite discharge chute. **NEVER** place hands or feet under mower or near discharge chute while engine is running.
6. **DO NOT TILT MOWER** at extreme angle while engine is running. Cut grass on hills and banks sideways.
7. **STOP THE ENGINE** when not cutting grass.
8. **DO NOT ALLOW MINORS** to operate mower unless thoroughly instructed and properly supervised.
9. **KEEP CHILDREN AND PETS AWAY** from area at all times during mowing operation.
10. **DISENGAGE ALL BLADE AND DRIVE CLUTCHES** before starting units so equipped. Do not attempt to start engine while mower is resting in high grass.

LAWN CARE:

1. It is not advisable to cut off more than 1/3 of the total length of the grass at any one mowing.
2. When mowing thick, lush wet grass, start at outside of lawn and mow in counter-clockwise direction to prevent mower from recutting clippings from previous rounds.
3. When mowing thin or dry grass, start at outside of lawn and mow in clockwise direction to progressively discharge clippings to center of lawn where they can easily be removed.
4. Recommended normal cutting heights for different types of grass:

1½ to 2½ — Med. to Med. High	Marion blue grass
1½ to 2½ — Med. to Med. High	Kentucky blue grass
1 to 2 — Med. - Low to Med.	Fescues
1 to 2 — Med. - Low to Med.	Rye grass
1 to 1½ — Low to Med. Low.	Bermuda
1 to 1½ — Low to Med. Low.	Zoysia
1 to 2 — Med. - Low to Med.	Bent grass

SUGGESTIONS FOR MORE EFFICIENT, AND MAINTENANCE-FREE OPERATION

GENERAL MOWING:

1. Always keep mower blade "Knife" sharp and balanced for maximum cutting efficiency.
2. Always start engine with mower on level surface where blade will not drag on tall grass or other obstructions. After starting, let engine warm up several minutes at slow speed before starting to mow.
3. When mowing under normal conditions, run mower at $\frac{1}{2}$ to $\frac{3}{4}$ throttle for best results.
4. When cutting tall heavy growth, or on rough ground, place mower in highest cut position and gradually reduce to desired cutting height over course of two or three mowings.

USING GRASS CATCHER:

1. When using grass catcher, operate mower engine at $\frac{3}{4}$ to full throttle.
2. In heavy dense turf, set cutting height in medium to high position.
3. Allow wet grass to dry before attempting to mow with grass catcher attached.
4. Empty catcher bag thoroughly before storage.

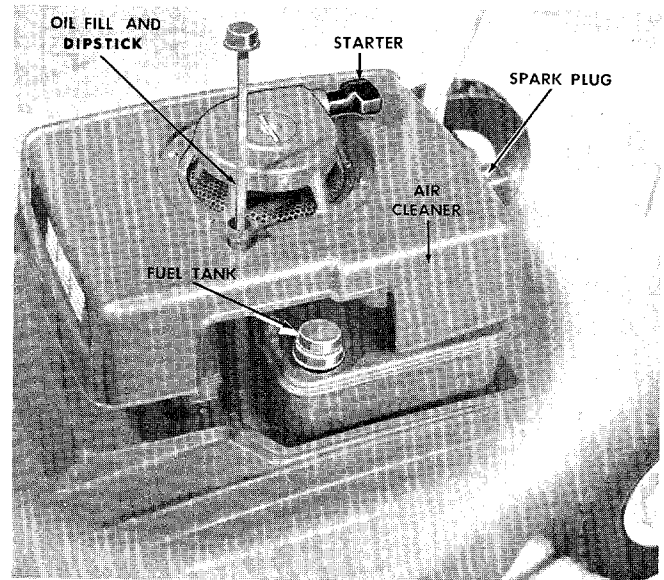
MAINTENANCE

Your mower like all machines with moving parts must receive care and maintenance. The following tips, if used, will contribute many trouble-free hours to your mower.

1. Check oil level frequently. When changing oil, make sure dirt and debris cleaned off oil sump before removing oil plug.
2. Keep mower clean, especially the engine well and underside of mower housing.
3. Check all nuts, bolts and screws occasionally to be sure mower is in good operating condition.
4. Should excessive vibration develop, check your blade and crankshaft immediately. Do not operate mower with an unbalanced blade, a damaged blade or a damaged crankshaft.
5. The wheel bearings are pre-lubricated at the factory and should require no further attention until mower is serviced. However, it is advisable to remove the wheels and apply a small amount of light oil to each axle, at least once a season.
6. If you are going to store your mower for any length of time (30 days or longer) it is important that the following steps be taken:
 - a. Drain the gas tank and carburetor. Allow the engine to run out of gas, gasoline left in the engine will leave gum deposits in the carburetor and gas tank.
 - b. Clean engine of all foreign matter.
 - c. Lubricate cylinder by removing the spark plug and pouring one ounce of clean lubricating oil through the spark plug hole into the cylinder, Crank engine slowly to spread oil and replace spark plug.
7. Just as your automobile needs professional mechanical maintenance from time to time, so does your air cooled engine. A yearly tune-up and check by a qualified service center is recommended to avoid breakdowns and unnecessary delays during the cutting season.

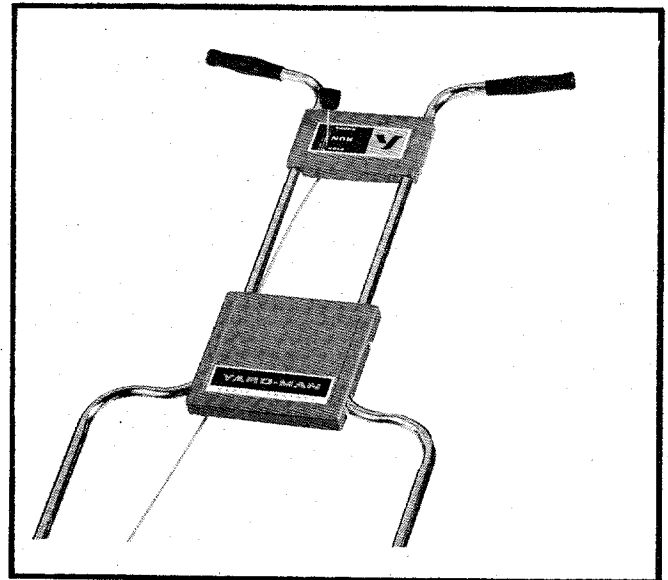
BEFORE STARTING ENGINE

1. Remove oil dipstick and fill crankcase with 1¼ pints S.A.E. No. 30 oil, replace dipstick securely.
 2. Fill fuel tank with good grade regular, clean, fresh gasoline DO NOT MIX OIL WITH GASOLINE.
- FOR COMPLETE ENGINE INFORMATION, READ ENGINE INSTRUCTION BOOKLET BEFORE STARTING OR OPERATING.



STARTING ENGINE

1. ALWAYS LOWER SAFETY CLUTCH PEDAL TO DIS-ENGAGE BLADE BEFORE STARTING ENGINE.
2. Move hand throttle to choke position.
3. Pull starter rope with quick, full stroke once. Move hand throttle to fast position and pull starter rope again.
4. When engine starts, move hand throttle to "IDLE" position until engine warms up.

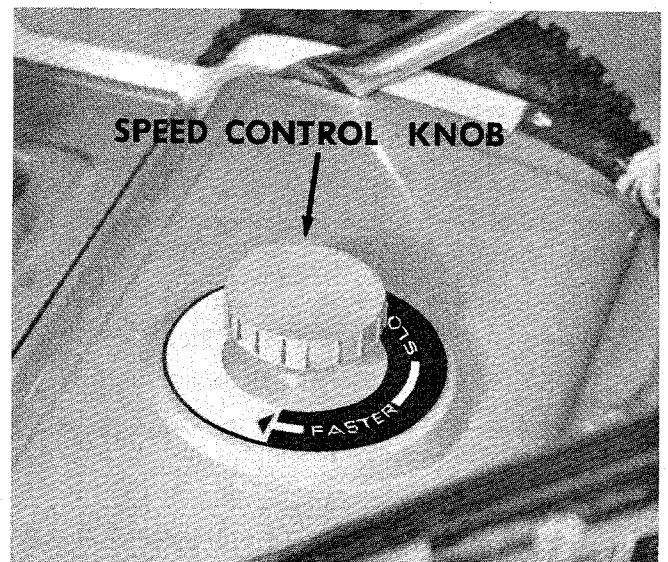


OPERATING INSTRUCTIONS

TO PROPEL MOWER FORWARD, simply raise the handle . . . TO STOP MOWER, lower the handle.

SPEED CONTROL

The forward speed of your mower can be adjusted as desired. To adjust speed, lower the handle to stop mower and turn speed control knob CLOCKWISE for faster speed or COUNTER-CLOCKWISE for slower speed.



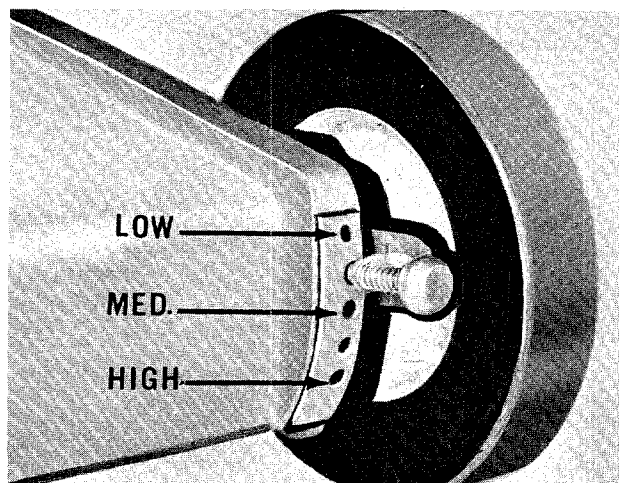
HEIGHT OF CUT ADJUSTMENT

The cutting height of your mower can easily be adjusted from low to high cut. **DO NOT MAKE ADJUSTMENTS WITH ENGINE RUNNING.**

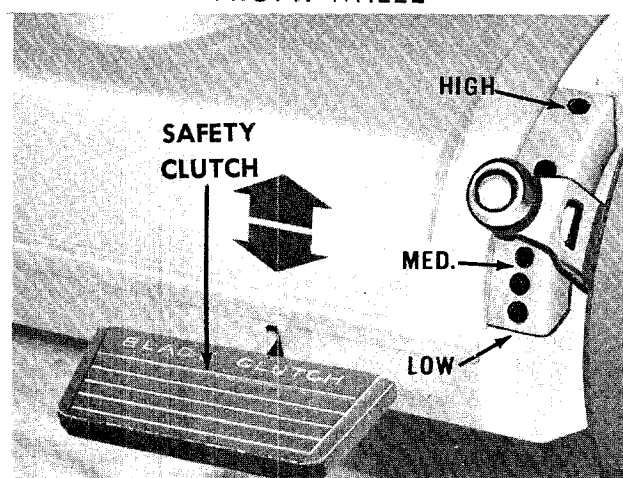
TO ADJUST CUTTING HEIGHT

1. Pull out plungers on front wheel adjust levers and move levers **DOWN** for higher cut or **UP** for lower cut as shown and release plungers. Be sure plungers are firmly seated in adjustment holes.

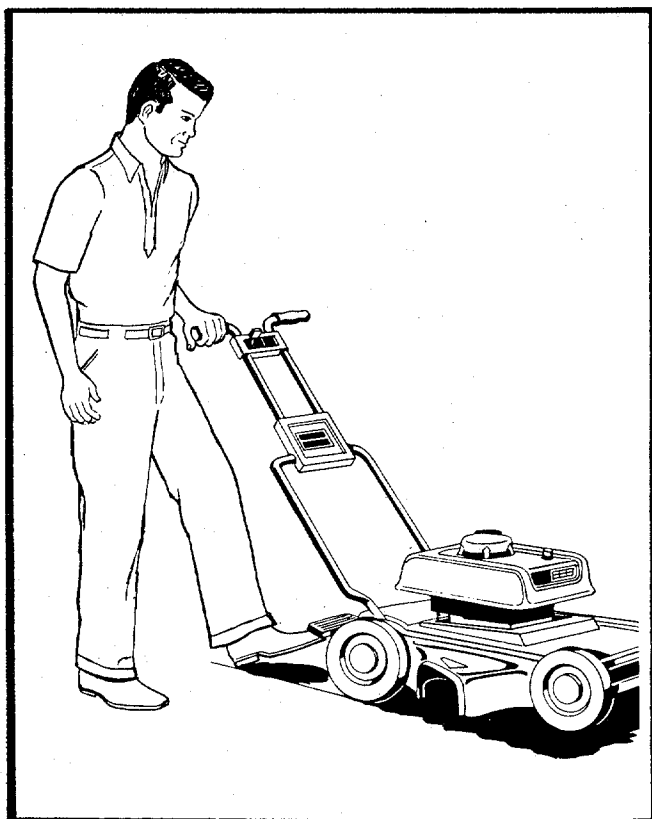
2. Pull out plungers on rear wheel adjust levers and move levers **UP** for higher cut, or **DOWN** for lower cut as shown and release plungers. Be sure plungers are firmly seated in adjustment holes.



FRONT WHEEL



REAR WHEEL



BLADE CLUTCH

The blade clutch provides the utmost safety in mower operation, **ALWAYS DISENGAGE CLUTCH** before starting engine. To engage blade clutch with maximum ease and efficiency follow these simple steps

1. Tilt mower back slightly on rear wheels.
2. Move to right of mower as shown, place left foot under clutch pedal and "flip" pedal upward.
3. The blade clutch engages gradually within 2 or 3 seconds to prevent unnecessary wear. Allow engine to regain normal speed before lowering front wheels and mowing.
4. To disengage clutch, step to right of mower as shown and with left foot, press pedal downward.

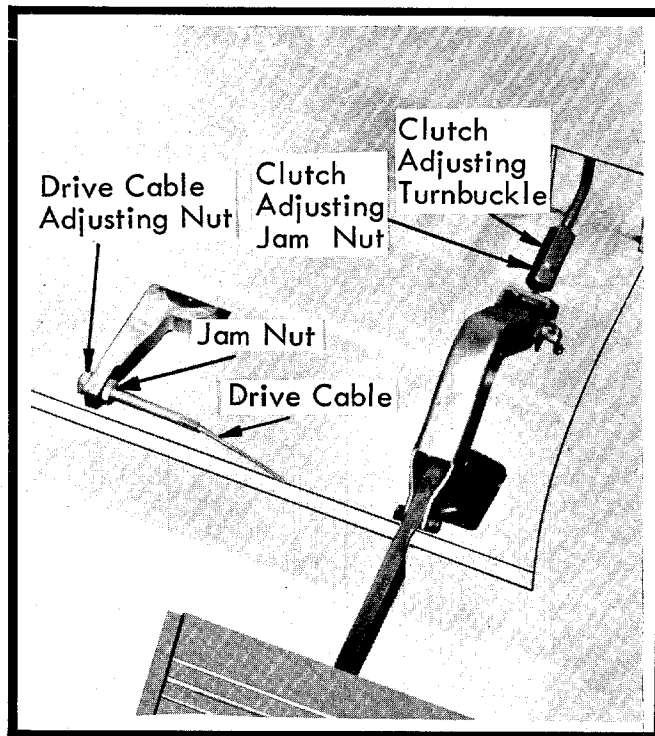
TO ADJUST PROPELLING UNIT

As propelling unit "wears-in" it is possible that handle may have to be lifted higher to engage propelling unit. To reduce the amount of handle travel required remove rear cover from propelling unit at rear of mower and turn drive cable adjusting nut COUNTER-CLOCKWISE 1 or 2 turns. Then tighten jam nut by turning CLOCKWISE to lock adjustment securely.

TO ADJUST BLADE CLUTCH

If blade slips under load, adjust clutch as follows:

Remove rear cover from propelling unit. Loosen clutch adjusting jam nut. Rotate clutch adjusting turnbuckle $\frac{1}{4}$ turn clockwise from operators position. Hold turnbuckle in position and tighten jam nut securely.



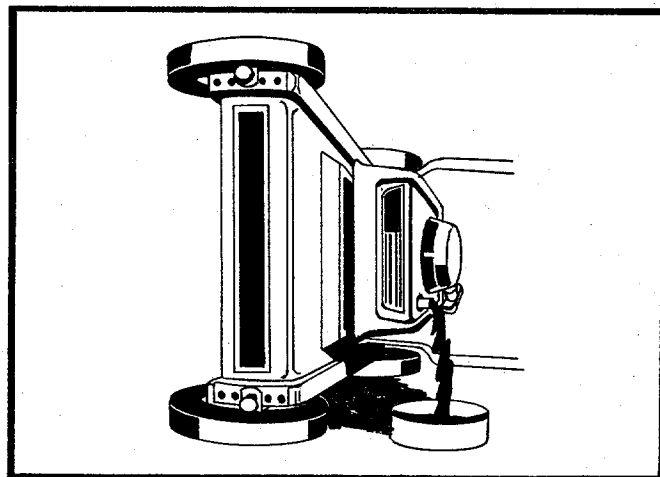
LUBRICATION AND MAINTENANCE

All wheel bearings are pre-lubricated at the factory and require no further attention until mower is serviced.

Engine oil should be changed after the first 5 hours of operation and each 20 hours of operation thereafter.

TO CHANGE OIL

Oil should be drained while engine is warm. Disconnect spark wire and secure at least 1" away from spark plug. Drain gasoline from fuel tank, remove oil dipstick and tilt mower on it's left side to allow oil to drain completely into a small can as shown. After draining, refill crankcase with $1\frac{1}{4}$ pints S.A.E. No. 30 oil and replace dipstick securely.



The air cleaner protects the engine against grit and dirt. Extremely dirty air cleaner element may cause engine to stall. SEE ENGINE INSTRUCTION MANUAL FOR PROPER AIR CLEANER MAINTENANCE.

BREAK-IN PERIOD

During the first ten hours of operation, check the following items frequently.

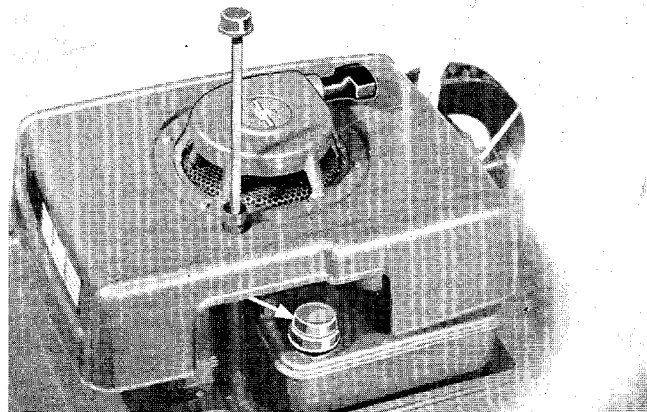
OIL LEVEL

Check oil level by removing dipstick.

SAFETY CLUTCH ADJUSTMENT

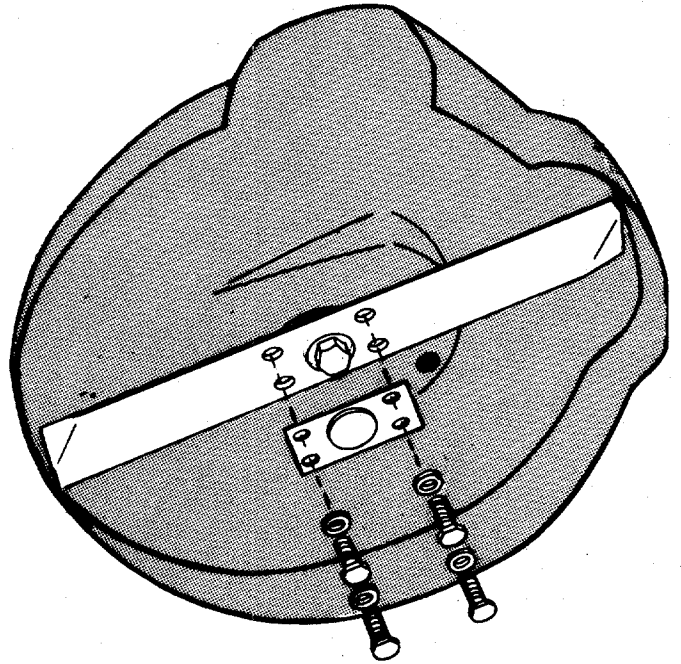
(See safety clutch adjustment.)

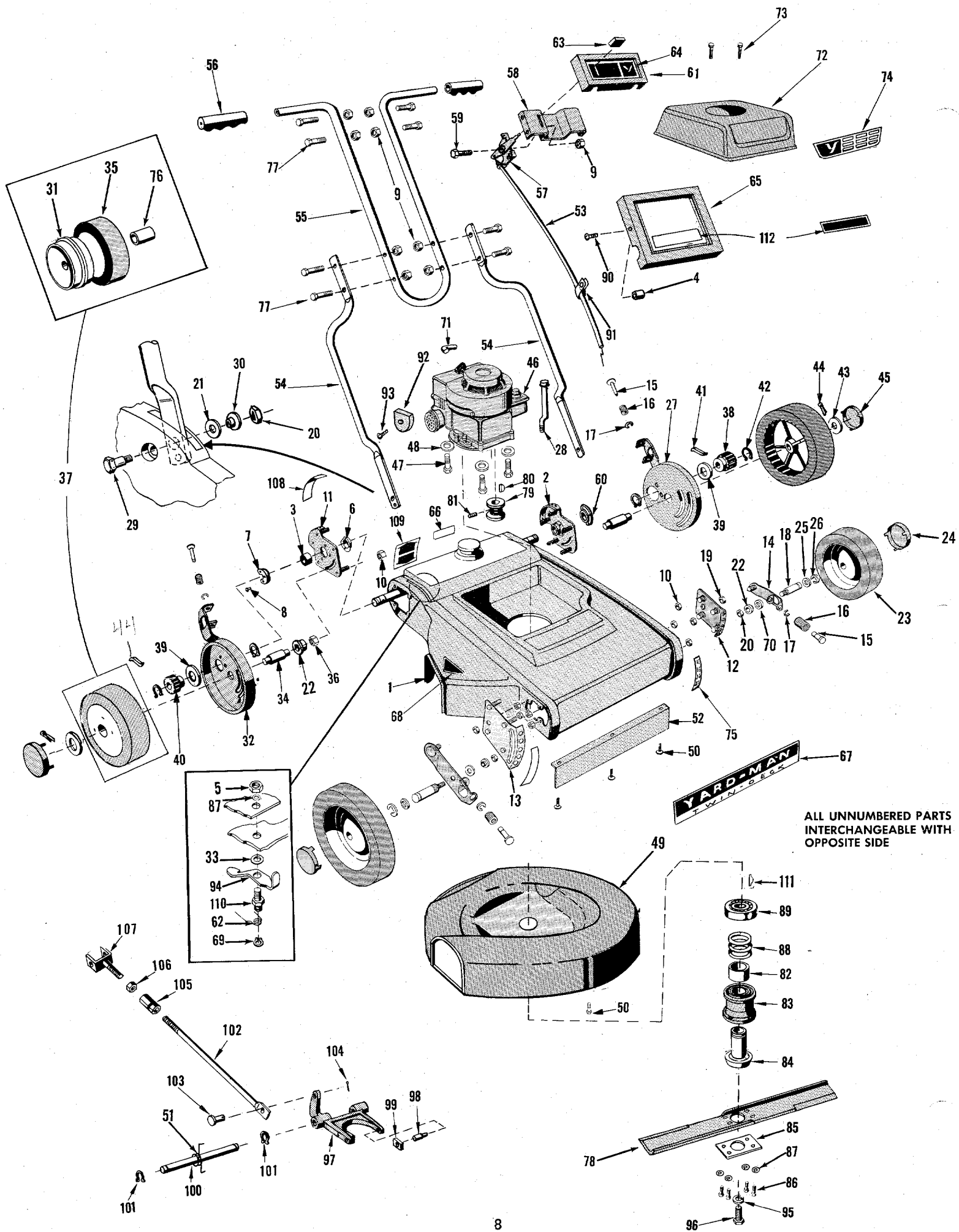
CHECK ALL BOLTS, NUTS AND SCREWS FOR TIGHTNESS.



TO REPLACE BLADE

1. Be sure engine is stopped, disconnect spark plug wire and secure at least 1" away from spark plug.
2. Tip mower with Muffler side up.
3. Remove blade bolts and washers.
4. Remove blade and replace with a new one.
5. Sharpen dull blade maintaining proper balance.





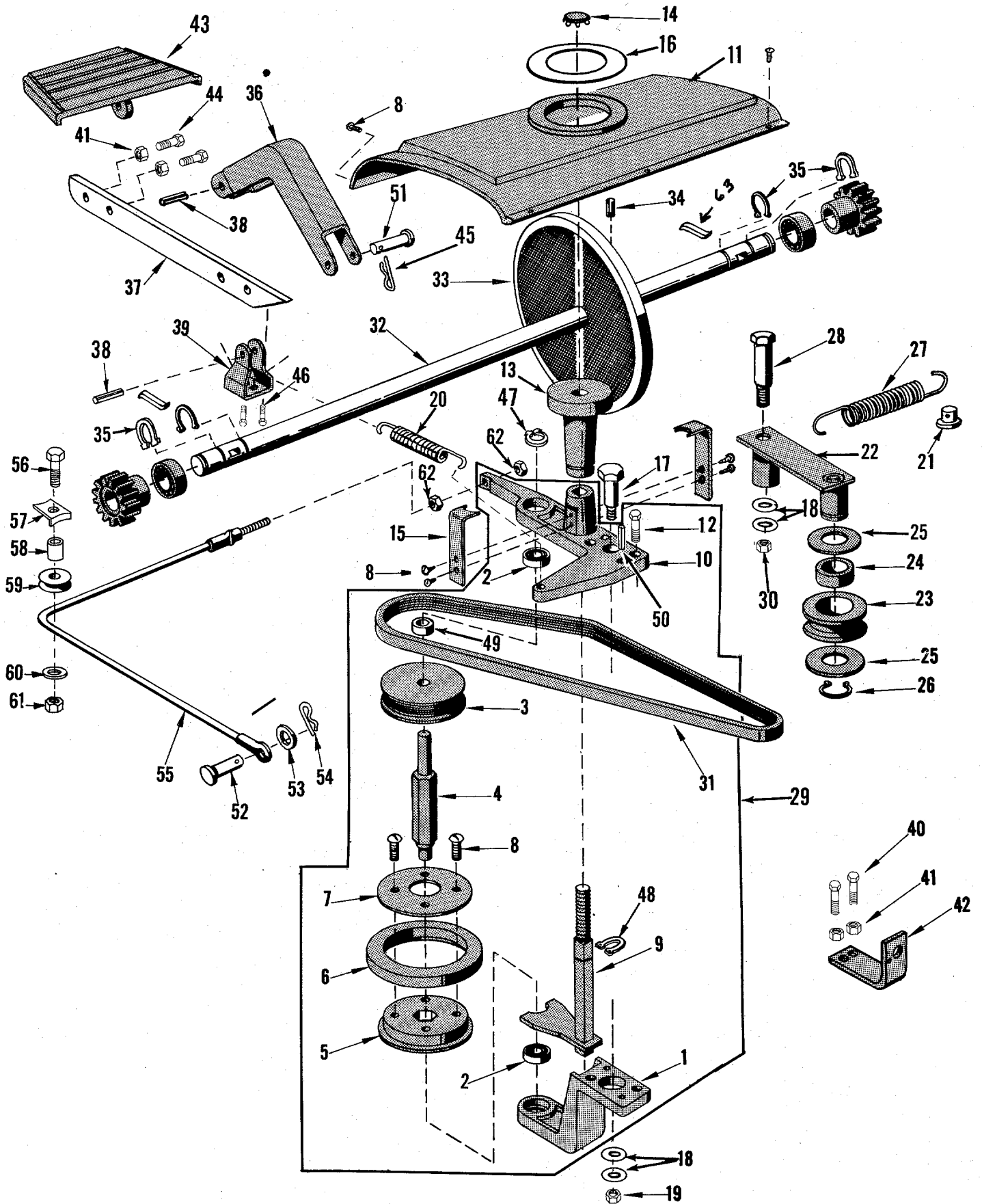
ALL UNNUMBERED PARTS INTERCHANGEABLE WITH OPPOSITE SIDE

PARTS LIST

MODEL 2210-1

Your Mower is right hand (R.H.) or left hand (L.H.) as you Mow.

REF. NO.	PART NO.	NAME OF PART	REF. NO.	PART NO.	NAME OF PART
1	6601-105-17	Housing—Blade	55	4712-45-01	Handle—Upper
2	2111-69-17	Assembly—Plate—wheel adjust— L.H. Rear	56	1710-16	Grip—Handle
3	1652-13	Bearing—Rear Drive	57	2142-56	Throttle Control
4	1624-152	Spacer	58	3609-264-17	Bracket—Throttle Control
5	1537-3	*Nut (1/4—20 Hex. Lock)	59	1509-74	*Bolt (1/4—20 x 7/8 Hex. Hd.)
6	1629-50	Retainer—Bearing	60	1182-5	Retainer Assy—L.H.
7	1182-4	Assy—Retainer & Spacer R.H.	61	2118-28-17	Cover—Throttle Control
8	1530-20	Rivet (3/16 dia. x 13/32)	62	1642-75	Spring
9	1538-8	Nut (1/4—20 Hex. Lock)	63	1643-34-40	Knob
10	1539-52	Nut (1/4—20 Hex. Lock)	64	1616-251	Label—Throttle Control
11	2111-70-17	Assembly—Plate—Wheel Adjust R.H. Rear	65	4622-77-17	Cover—Handle
12	2111-71-17	Assembly—Plate—Wheel Adjust L.H. Front	66	1605-340	Name—Plate
13	2111-72-17	Assembly—Plate—Wheel Adjust R.H. Front	67	2616-252	Yard—Man Label
14	1113-30-17	Lever—Wheel Adjust	68	1616-242	Label—Caution
15	1547-9	Pin—Adjusting	69	1650-31	Ring—Retaining
16	1642-18	Spring—Pin Actuating	70	1540-84	Washer—Axle to Plate
17	1650-10	Ring—Retaining	71	1624-126	Sleeve—Spark Plug Wire
18	1631-5	Axle—Wheel	72	4699-64-17	Shroud—Engine
19	1539-57	Nut (5/16—24 Special)	73	1526-1	Screw (#8 x 3/8 Thd. Cut)
20	1538-6	*Nut (5/16—24 Hex. Hd.)	74	2616-253	Label—Shroud
21	1540-43	*Washer	75	1616-193	Label—Wheel Adjust Front
22	1657-7	Bushing—Axle to Adjusting Plate	76	1652-52	Bearing
23	1108-113-41	Assembly Wheel & Tire—Front	77	1509-90	*Bolt (1/4—20 x 1 1/4 Hex. Hd.)
24	2674-32	Hub Cap—Front	78	3604-40	Blade
25	39-012	Washer—Axle (1/2 x 1" x .058)	79	1626-60	Pulley
26	1650-1	Ring	80	1009	Key
27	2118-23-17	Assy—Cover & Adjusting Lever L.H.	81	1508-14	Set Screw
28	0170-3	Oil Dipstick Assy	82	1652-62	Bearing
29	1513-68	Bolt Special	83	2601-106	Clutch Housing
30	1657-38	Bushing	84	1145-12	Assy—Sleeve, Ring & Plug
31	1110-27-17	Wheel & Bearing Less Tire	85	2622-78	Blade Cover
32	2118-22-17	Assy—Cover & Adjusting Lever R.H.	86	1509-94	Bolt (1/4—20 x 9/16 Hex. Hd.)
33	1540-23	Washer	87	1018	Lockwasher
34	1631-26	Axle—Wheel	88	1642-70	Spring
35	2619-25	Tire	89	1652-65	Bearing—Blade Clutch
36	1538-23	*Nut—Lock (5/16—24 Hex. Lock)	90	1511-18	*Screw (#10—32 x 3/8 Thd. Cut)
37	1108-80-41	Assembly Wheel & Tire—Rear	91	1689-2	Cable—Clamp
38	425	Pinion—L.H.	92	1189-3-47	Muffler Extension
39	109	Washer—Felt	93	1511-34	*Screw (#8—32 x 3/8 Thd. Cut)
40	428	Pinion—R.H.	94	1609-262	Bracket
41	323	Pawl	95	1543-34	Lockwasher (Special)
42	1650-21	Ring—Retaining	96	1509-101	*Bolt (3/8—24 x 1 1/8 Hex. Hd.)
43	141	*Washer	97	2678-17	Yoke
44	142	Cotter Pin—Wheel Retaining	98	1645-15	Trunnion
45	2674-33	Hub Cap	99	1704-5	Brake Shoe
46		Engine Ass'y B & S Model 92992	100	1547-27	Pivot Pin
47	1513-56	Bolt—Engine Mounting (3/8—16 x 1 1/4 Hex. Hd. "Tap-Tite"	101	1650-8	Retaining Pin
48	1076	Washer—Lock—Split	102	2683-51	Clutch Rod
49	2162-8-17	Assembly—Grass Baffle	103	1545-11	Clevis Pin
50	1511-31	*Screw (#10—32 x 3/8 Thd. Cut)	104	1547-31	Cotter Pin
51	2642-77	Torsion Spring	105	1539-45	Nut
52	2602-28-17	Comb—Front (Stamping)	106	1534-23	*Nut (1/4—28 Hex.)
53	0171-29	Conduit and Wire	107	1132-61	Adjusting Bracket
54	4712-47-01	Handle—Lower	108	1616-194	Label—WHL. HDJ.—Rear
			109	1616-197	Label—Clutch
			110	1513-60	Bolt—Special
			111	1646-8	Key
			112	1616-236	Label—Handle Cover
				3104-6-17	Leaf Mulcher (Available as Accessory @ \$1.00 each.)



PARTS LIST

MODEL 2210-1

Your Mower is right hand (R.H.) or left hand (L.H.) as you Mow.

REF. NO.	PART NO.	NAME OF PART	REF. NO.	PART NO.	NAME OF PART
1	2678-18	Yoke—Lower	30	1538-13	* Nut—Lock (3/8-16 Hex. Lock)
2	1652-64	Bearing	31	1651-36	Belt—Poly-“V” (“J” Section 4 rib)
3	1626-59	Pulley—Poly-V “J” Section— Hex. Drive	32	2632-113	Shaft—Rear Wheel Drive
4	1632-111	Shaft—Ring Drive	33	2675-16	Disc—Friction Drive
5	1644-65	Hub—Friction Ring	34	1548-12	Pin—Disc to Drive Shaft
6	1607-12	Ring—Friction	35	1650-21	Ring—Shaft Retaining
7	1607-10	Ring—Retaining Friction Ring	36	2625-20	Clutch Link
8	1511-31	* Screw—(#10-32 x 7/16)	37	2680-43	Arm
9	1119-40	Assembly Yoke & Shaft	38	1548-20	Roll Pin
10	3678-19	Yoke—Upper	39	2609-303	Bracket
11	3622-72-17	Cover—Rear	40	1509-35	Bolt (1/4-20 x 3/8 Hex. Hd.)
12	1509-74	* Bolt (1/4-20 x 3/8 Hex. Hd.)	41	1538-8	Nut (1/4-20 Hex. Lock)
13	1643-30	Knob—Speed Change	42	1609-249	Bracket
14	1649-24	Plug—Button	43	2663-12-40	Pedal—Clutch
15	1609-252	Bracket—Knob Retaining	44	1509-34	* Bolt (1/4-20 x 3/4 Hex. Hd.)
16	1616-250	Label	45	1547-31	Hairpin
17	1513-50	Bolt—Shoulder Yoke to Housing	46	1016	* Bolt (1/4-20 x 3/8 Hex. Hd. Thd. Cutting)
18	1540-85	* Washer—(3/8 x 3/4 x 3/64)	47	1650-32	Retaining Ring
19	1538-13	* Nut (3/8-16 Hex. Lock)	48	1650-1	Ring Retaining
20	1642-72	Spring Yoke Actuating	49	1540-80	* Washer (1/2 x 11/16 x 3/32)
21	1545-11	Pin—Clevis Spring Mounting	50	1548-21	Roll Pin (3/16 x 3/32)
22	1132-63	Assembly Idler Bracket & Spacer	51	41-049	Pin—Clevis (1/4 x 1 1/8)
23	1626-61	Pulley—Idler Poly-V “J” Section	52	1545-11	Pin—Clevis (1/4 x 1/2)
24	1652-18	Bearing—Idler Tension	53	1540-61	* Washer (1/4 x 1/2 x 1/16)
25	1543-16	Washer—Thrust (Sintered Bronze)	54	1547-4	Hairpin
26	1650-9	Ring—Retaining (Tru-Arc #5133-62)	55	2127-6	Assy—Clutch Cable
27	1642-71	Spring—Idler Tension	56	1509-88	* Bolt (10-32 x 11/16 Hex. Hd.)
28	1513-58	Bolt—Shoulder Idler Pivot (3/8-16 Shoulder)	57	1629-34	Retainer—Cable
29	1129-236	Ass’y —Friction Drive	58	1624-46	Spacer
			59	1626-37	Pulley
			60	1097	* Washer
			61	1534-8	* Nut (#10-32 Hex. Lock)
			62	1534-1	* Nut (#10-32 Jam)
			63-	0323-000	PAWL

For Illustration—See Page 9

*Standard Hardware Item—May Be Purchased Locally

When you own this - -

YARD-MAN

22" ROTARY MOWER
SELF-PROPELLED - VARIABLE SPEED

you enjoy these outstanding features

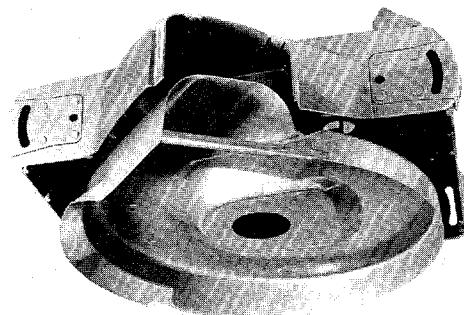


**NEW TWIN/DECK
SAFETY HOUSING**

Light weight Aluminum alloy housing protected with clean flow steel grass tunnel insert - result greater mowing performance.

**QUICK SET HEIGHT
ADJUSTMENT**

For fast selection of Hi, Med., Lo cutting heights

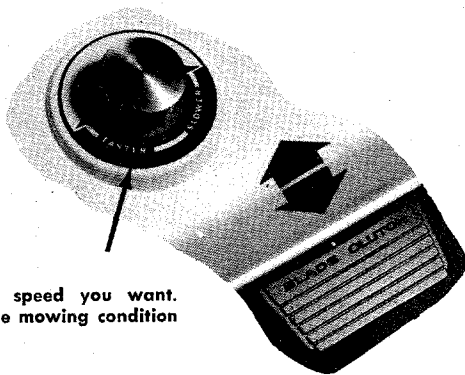


**TAPER-CONE SAFETY
BLADE CLUTCH**

Raise Foot Pedal, starts blade rotation, Lower pedal stops blade quickly. Proven Safety feature.

**DIAL YOUR
SPEED**

Simply dial the mowing speed you want. Make your selection for the mowing condition up to 3 1/4 m.p.h.



WARRANTY

All parts (including rotary mower housings) are guaranteed against defects in material and workmanship for a period of one (1) year when used for residential service. (90 days for commercial service).

Any YARD-MAN unit or part found to be defective within the Warranty period, is to be returned to an authorized YARD-MAN dealer for repair or replacement without charge.

The engine is warranted separately by the manufacturer. However, on Safety Clutch equipped Rotary Mowers, YARD-MAN guarantees to repair or replace without charge any bent or broken engine crankshaft for a period of five (5) years from date of purchase.

YARD-MAN[®] INCORPORATED
JACKSON, MICHIGAN