

# Owner's Operating Service Instruction Manual

10¢

**Model No.  
2500-3-6**

- ASSEMBLY
- OPERATION
- REPAIR PARTS

**22" SELF PROPELLED ROTARY MOWER**

# YARD-MAN

# IMPORTANT

It is suggested that this manual be read in its entirety before attempting to assemble or operate. Keep this manual in a safe place for future reference and for ordering replacement parts.

This unit is shipped WITHOUT GASOLINE or OIL. After assembly, see operating section of this manual for proper fuel and amount.

## SAFE OPERATION PRACTICES FOR WALK-BEHIND MOWERS

### TRAINING

1. Read the Operating and Service Instruction Manual carefully. Be thoroughly familiar with the controls and the proper use of the equipment.
2. Never allow children to operate a power mower.
3. Keep the area of operation clear of all persons, particularly small children and pets.

### PREPARATION

1. Thoroughly inspect the area where the equipment is to be used and remove all stones, sticks, wire, bones and other foreign objects.
2. Do not operate equipment when barefoot or wearing open sandals. Always wear substantial footwear.
3. Check the fuel before starting the engine. Do not fill the gasoline tank indoors, when the engine is running, or while the engine is still hot. Wipe off any spilled gasoline before starting the engine.
4. Disengage the self-propelled mechanism or drive clutch on units so equipped before starting the engine.
5. Never attempt to make a wheel adjustment while the engine is running.
6. Mow only in daylight or in good artificial light.
7. Never operate the equipment in wet grass. Always be sure of your footing; keep a firm hold on the handle and walk, never run.

### OPERATION

1. Do not change the engine governor settings or overspeed the engine.
2. Do not put hands or feet near or under rotating parts. Keep clear of the discharge opening at all times.
3. Stop the blade(s) when crossing gravel drive, walks or roads.
4. After striking a foreign object, stop the engine, remove the wire from the spark plug, thoroughly inspect the mower for any damage, and repair the damage before restarting and operating the mower.

5. If the equipment should start to vibrate abnormally, stop the engine and check immediately for the cause. Vibration is generally a warning of trouble.
6. Stop the engine whenever you leave the equipment, before cleaning the mower housing, and when making any repairs or inspections.
7. When cleaning, repairing or inspecting, make certain the blade and all moving parts have stopped. Disconnect the spark plug wire, and keep the wire away from the plug to prevent accidental starting.
8. Do not run the engine indoors.
9. Shut the engine off and wait until the blade comes to a complete stop before removing the grass catcher or unclogging chute.
10. Mow across the face of slopes, never up-and-down. Exercise extreme caution when changing direction on slopes. Do not mow excessively steep slopes.
11. Always disconnect electric mowers (line operated) before cleaning, repairing or adjusting.
12. Never operate mower without proper guards, plates or other safety protective devices in place.
13. Keep washout ports and other mower-housing service openings closed when mowing.

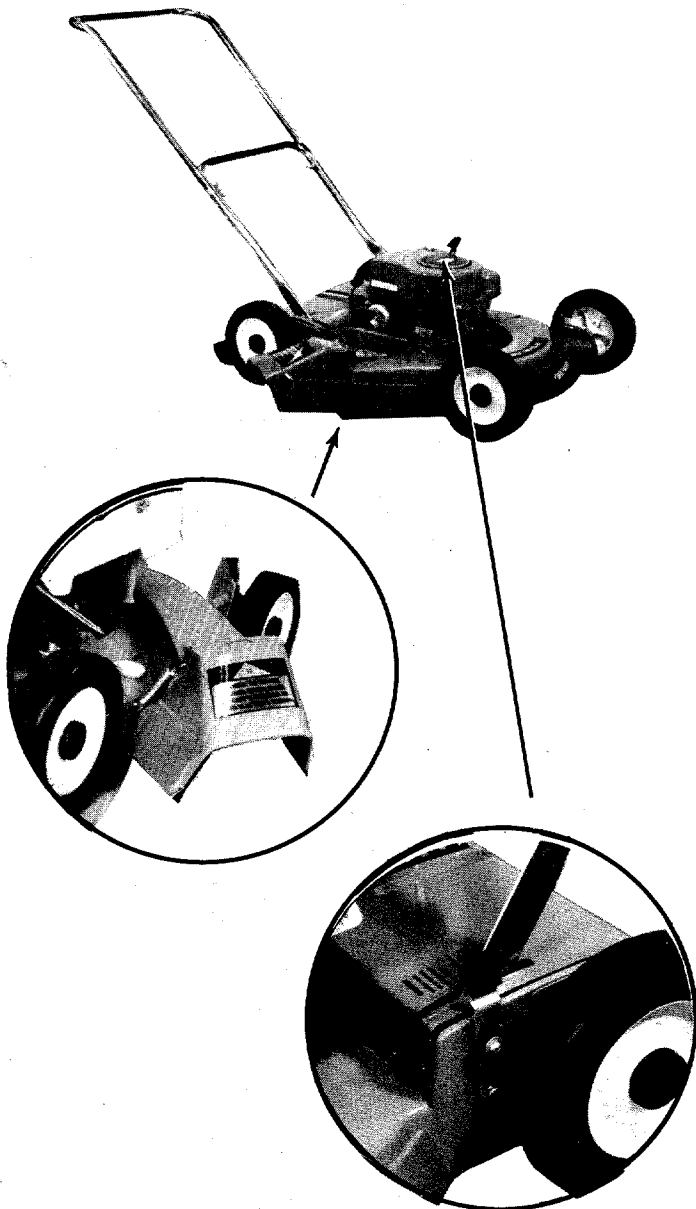
### MAINTENANCE AND STORAGE

1. Check the blade and engine mounting bolts at frequent intervals for proper tightness.
2. Keep all nuts, bolts, and screws tight to be sure the equipment is in safe working condition.
3. Never store the equipment with gasoline in the tank inside of a building where fumes may reach an open flame or spark. Allow the engine to cool before storing in any enclosure.
4. To reduce fire hazard, keep the engine free of grass, leaves, or excessive grease.
5. Check the grass catcher bag frequently for wear or deterioration. Replace with new bag for safety protection.

# ASSEMBLY

Self-propelled model 2500-3-6 is shipped in one carton with the handle assembly folded down and the chute deflector up (both in storage position).

1. Move the chute deflector down into operating position.
2. To place the handle in operating position, press the up-stop lever to release the handle and then lift the handle assembly until the lower section snaps into place. Next, loosen the handle knobs and move the upper section into operating position. Tighten the handle knobs to secure both sections.



## BEFORE STARTING ENGINE

Remove the oil dip stick or the oil fill plug and fill the engine crankcase with 1 ¼ pints of SAE 30 oil.



**CAUTION**  
Do not overfill.

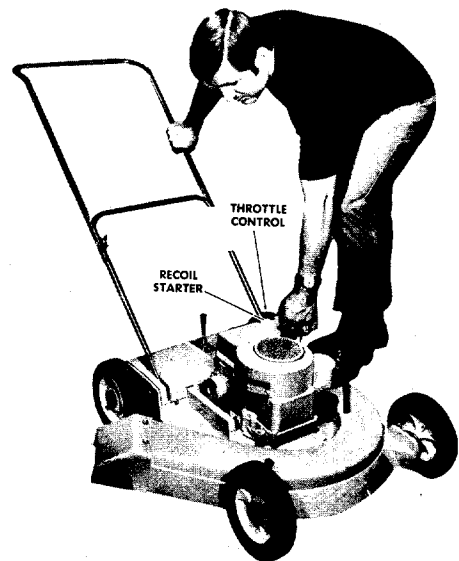
Fill the gasoline tank with clean, fresh, regular grade gasoline. **DO NOT MIX WITH OIL.**

For complete information, read the engine manual before starting the engine.

## TO START ENGINE

1. Place the throttle control in "START" position.
2. While standing on the left side of the mower (opposite the discharge chute) place your left foot on the housing to stabilize the mower and pull the starter cord with a quick stroke.
3. When the engine starts, move the throttle control to SLOW speed until the engine warms up.

If the engine floods, place the throttle control in STOP position. Pull the starter cord at least 4 times. Then reposition the throttle control to Start and repeat the starting procedure. Engine flooding is usually caused by a dirty air filter. If engine continues to flood even with a clean filter, lean the fuel mixture.



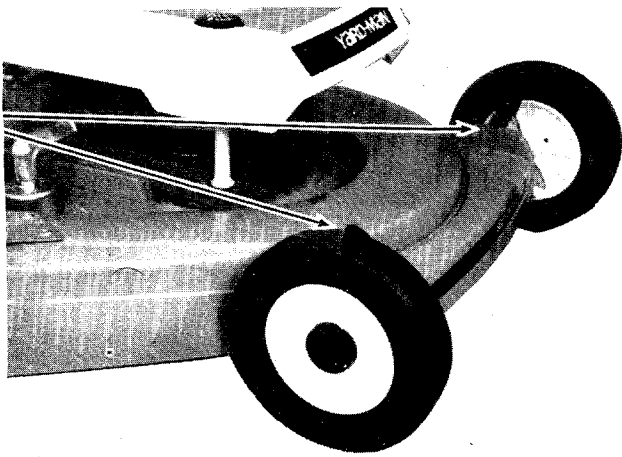
## TO ADJUST CUTTING HEIGHT

This mower is equipped with individual wheel adjustment levers on the two front wheels and a single adjustment lever for the two rear wheels.

The cutting height can be adjusted easily through heights from  $\frac{3}{4}$ " to  $2\frac{3}{4}$ ".

### Front Wheels

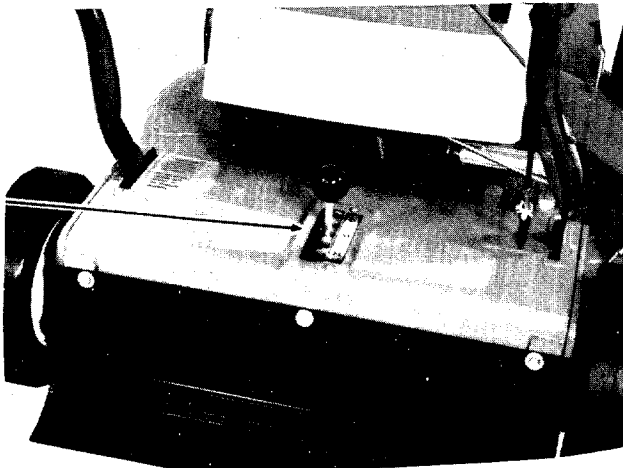
Place your hand on the outside of the wheel and with your thumb pull the adjusting lever toward the wheel until the locating trunnion on the lever is free from the housing. Move the wheel and the lever to the height of cut desired and release the lever, allowing the trunnion to drop into the proper locating hole.



### Rear Wheels

Press the spring loaded adjusting lever out of the detent and move it to the proper detent for the cutting height desired. The rear adjustment mechanism has a counter-balancing spring to help compensate for the weight of the mower when moving the cutting height from high to low position.

(Never make height adjustments with the engine running.)

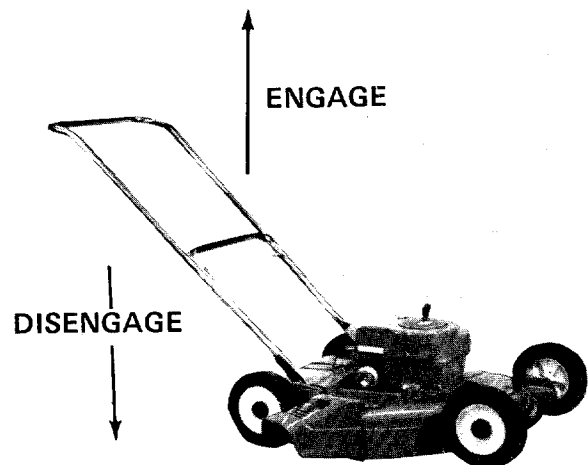


## OPERATION OF CONTROLS

The handle engages and disengages the self-propelling clutch.

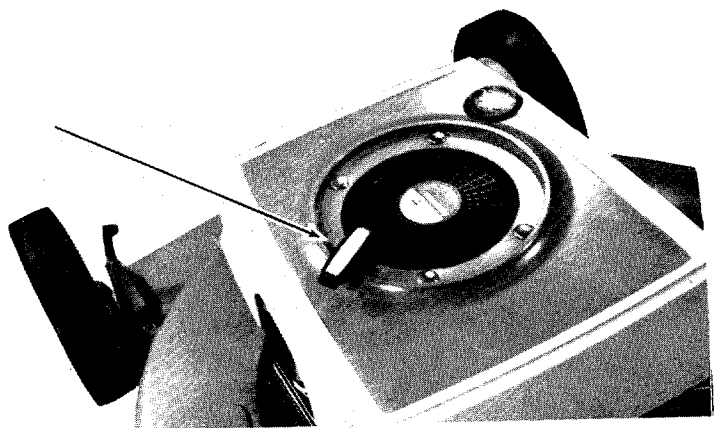
To move forward, lift the handle up. This will engage the clutch and propel the mower. The handle must be held in the "up" position to maintain forward movement.

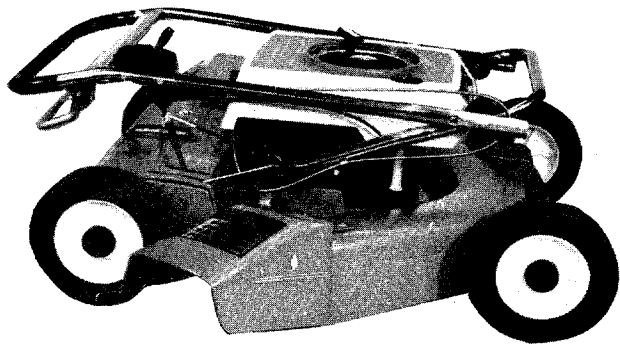
To disengage the clutch and thereby stop forward movement, simply lower the handle to its "down" position. The handle should be all the way down in order to completely disengage the clutch. If the rear wheels will not roll backward freely with the engine off, it will be necessary to retune the clutch. See Adjustments Section.



### EASY SPIN START

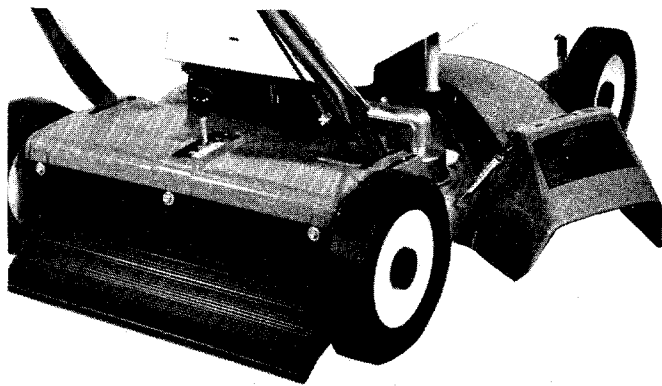
This mower is equipped with an E-Z Spin recoil starter, designed for safe, easy starting. Its vertical pull is placed on the left side of mower, opposite the discharge chute. This position enables you to hold the mower securely with your left foot while you pull the starter cord.





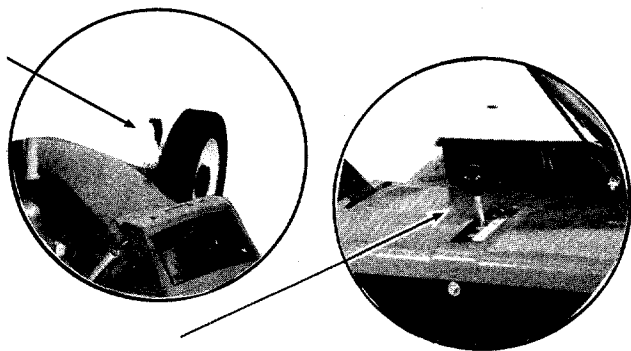
### FOLDING HANDLE

The adjustable handle makes storage and transportation of this mower much simpler. You merely loosen the holding knobs and fold the handle down, over the mower...reducing the mower to a compact, easily-handled size.



### CHUTE DEFLECTOR/REAR FLAP

The deflector is an effective shield against objects which might otherwise fly out of the discharge chute. The rear flap protects against objects thrown rearward while allowing maximum maneuverability of the mower.



### ADJUSTABLE CUTTING HEIGHTS

You can adjust the cutting height from  $\frac{3}{4}$ " to  $2\frac{3}{4}$ " by simply moving the adjustment levers which raise or lower the front and rear wheels.

## MAINTENANCE

Your Yard-Man mower will give excellent service for many years with the reasonable care and maintenance outlined below:

1. Keep the mower clean, especially the engine and underside of the mower housing. The top of the mower should be brushed or wiped. The underside can be cleaned with a hose through the Wash-Out Port.
2. Each time you mow, inspect the condition of bolts, nuts, cotter pins, etc., to be sure all are tight.
3. Check the oil level frequently. Oil should be changed every 25 hours of operation. For new mowers, oil should be changed after the first 5 hours of operation and after every 25 hours afterwards.
4. Keep the cutting blade sharp. A dull blade not only does a poor mowing job but also puts additional strains on the engine...and causes additional vibration.
5. The air filter should be re-conditioned frequently...after every 25 hours of operation (refer to page 10 for proper procedure).
6. It is advisable to remove the wheels and apply a small amount of light oil to each axle at least once a season...more often under heavy usage.
7. Should excessive vibration develop, check the blade and blade shaft for damage. Have the damage repaired before you operate the mower again.
8. Periodically remove the spark plug and check its condition. However, don't clean badly fouled spark plugs. Better starting and operation is achieved by replacing with a new plug.
9. Operate the mower within its limits. Remember excess strains only wear parts out faster.

## END-OF-SEASON STORAGE

### END-OF-SEASON STORAGE

At the end of the cutting season, the mower should be prepared for winter storage as follows:

1. Drain the gasoline tank completely. Then start the engine and run it out of gas. Gasoline which remains in the fuel system for long periods develops a varnish residue which can foul the carburetor and hinder the engine's operation.

2. As an alternative to the above, add a few drops of stabilizer to the gasoline. This will prevent formation of gum and varnish. Your service center can give you the facts on this.
3. Remove the spark plug and inject an ounce of SAE 10 oil into the cylinder through the spark plug hole. Crank the engine several times to spread the oil over the cylinder wall. Replace the spark plug but leave the ignition wire unattached.
4. Lubricate all points outlined in the lubrication guide.
5. Place a protective cover over the mower to keep dust and dirt off.

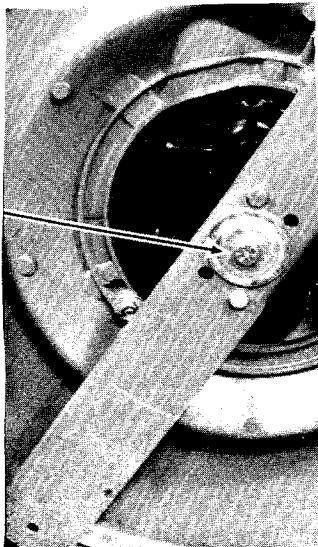
## TUNE-UP ADJUSTMENTS

### CUTTING BLADE

The blade may easily be removed for grinding or replacement as follows:

1. Remove bolt and lockwasher holding blade and blade adapter to engine crankshaft.
2. Remove blade and blade adapter from engine crankshaft.
3. Remove two bolts, lockwashers and nuts holding blade to blade adapter (if necessary).

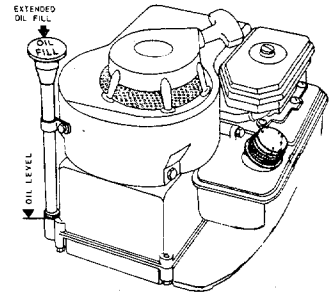
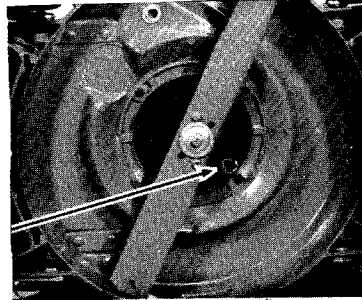
When sharpening blade, follow the original angle of grind as a guide. It is extremely important that each cutting edge receives an equal amount of grinding to prevent an unbalanced blade. An unbalanced blade will cause excessive vibration when rotating at high speeds and may cause personal injury or damage to the mower. Upon reassembly, make certain all parts are assembled properly and tightened securely.



### CHANGE OIL

Engine oil should be changed after the first 5 hours of operation and every 25 hours thereafter. Oil should be drained only when the engine is warm to get a complete drain. Mower should be on a level surface.

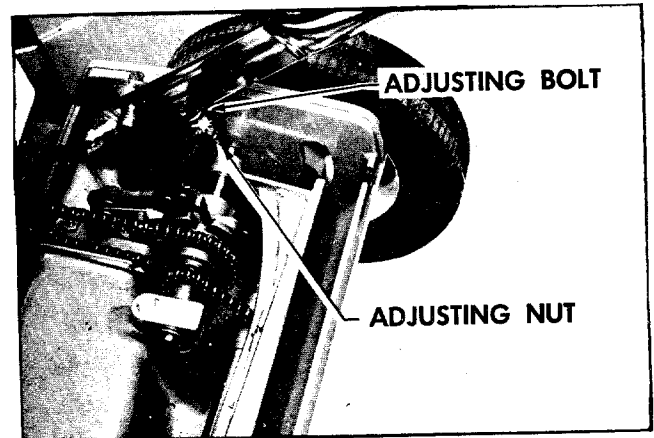
Set a shallow one quart container under the oil drain, remove the oil drain plug and drain the oil completely. Replace with SAE 30 detergent oil (1 1/4 pints approx.).



### ADJUST CLUTCH

Remove the rear cover and loosen the jam nut holding the clutch adjusting bolt. Raise the bolt head about two turns. Retighten the jam nut.

If the condition is not corrected, repeat the above for further adjustment.



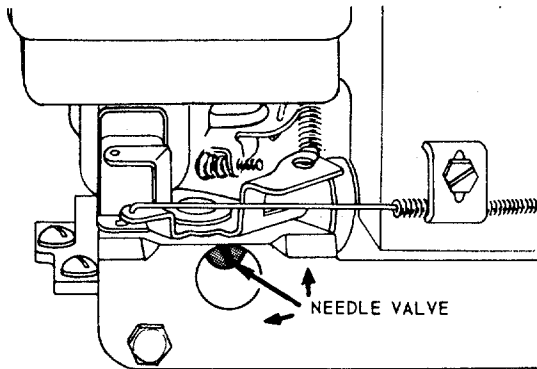
If the wheels do not roll backwards freely with the engine off, it is necessary to retune the clutch. Disconnect the ignition wire and secure it at least 1" away from the spark plug. With the handle in the down position, turn the engine over several times. It may be necessary to repeat this sequence several times before the wheels will roll freely.

### ADJUST CARBURETOR

- a. The gasoline content of the fuel mixture is adjusted by turning the needle valve clockwise to close . . . counterclockwise to open.

- b. To adjust the fuel mixture throttle the engine to middle operating speed. Slowly turn the needle valve clockwise until the engine begins to lose speed (too-lean mixture). Then slowly turn the valve counterclockwise PAST the point of smoothest engine performance until the engine begins to run unevenly (too-rich mixture). Then turn the valve back slightly until the engine is smooth.

For greater detail, see the engine manual.

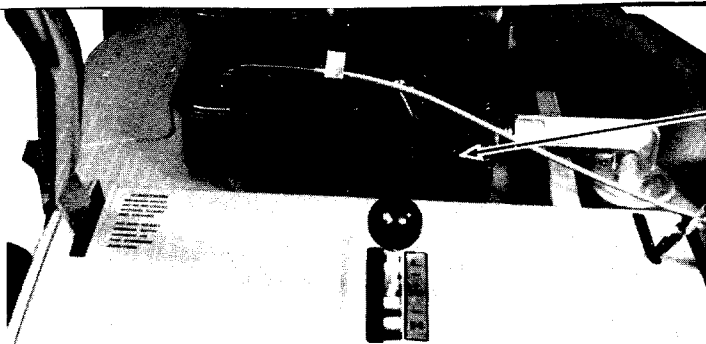


### CHANGE SPARK PLUG

The spark plug is the heart of the engine and its condition directly effects how the engine performs.

The spark plug should be checked frequently and cleaned if fouled. However, if the plug is badly fouled, it is better to replace with a new plug. A new spark plug will give better starting and all around performance.

In removing the spark plug use the proper plug wrench to avoid damage to the plug.

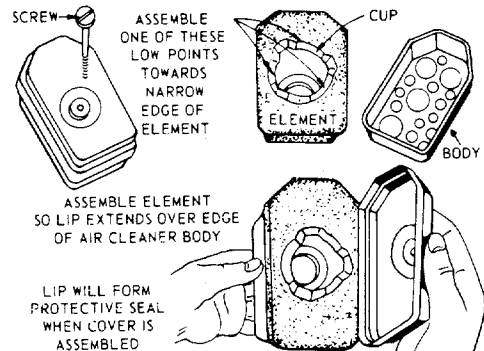


### RECONDITION AIR FILTER

A dirty air filter can cause poor engine performance. The filter should be reconditioned every 25 hours of service.

On model 2510 remove the shroud to expose the air filter. Remove the filter cap screw and carefully lift the filter off the carburetor. Be careful to prevent any dirt from falling into the carburetor.

The filter should be reconditioned as directed in the engine manual. Under unusually dusty conditions the filter should be reconditioned or replaced more often.



### ENGINE OPERATING TIPS

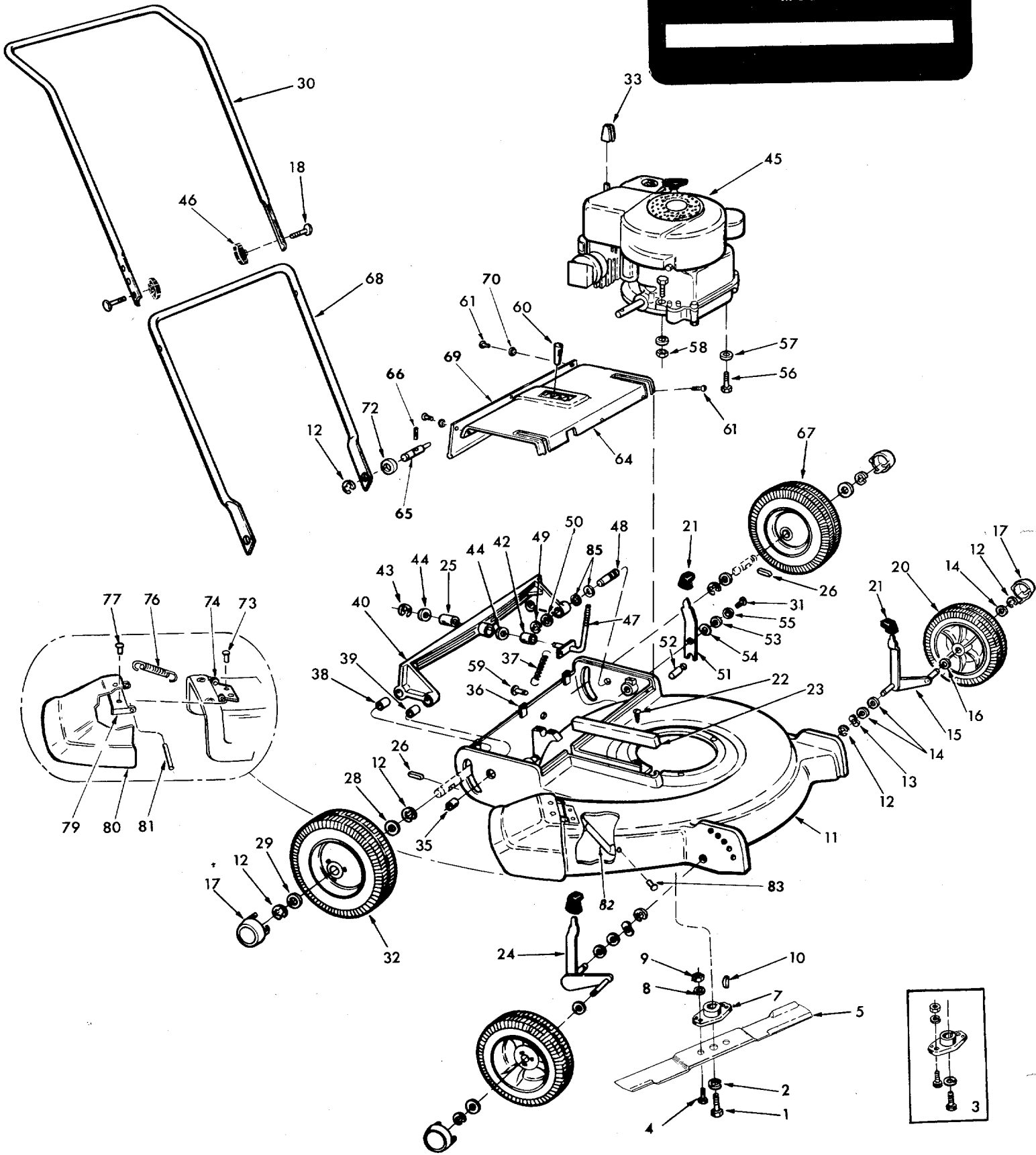
1. If the engine won't start, check the gas tank, to make sure it is full.
2. Be sure the holes in the gas cap are open and will allow air to enter the gas tank.
3. Be sure the air filter is kept in good, operating condition. Cutting grass can be a dusty affair and any dust which gets past the filter can damage the engine. Also a dirty air filter will reduce the engine's operating efficiency.
4. Never use old gas in the engine. In addition to bringing on problems with gum and varnish, old gas makes for hard starting.
5. If the engine misses, check the spark plug and plug wire. Dirty plugs should NOT be cleaned they should be replaced.

If the engine continues to misfire with a new plug, the problem can be loose engine bolts, a leaky head gasket, sticky valves, etc. For these conditions it is suggested a certified service center be contacted for advice.

6. If the engine overheats, the air cooling fins may be clogged. Also, a too-lean fuel mixture can cause overheating.
7. Don't put the engine under full power as soon as it starts. The piston in a cold engine is not a tight fit and fast RPM before the engine warms up can cause excessive piston wear.
8. Do not idle the engine at too slow a speed for extended periods of time. Oil will not circulate properly and excessive wear can result. . . also the engine can overheat.

2500-3-6

IF YOU WRITE TO US ABOUT THIS ARTICLE  
OR IF YOU ORDER REPLACEMENT PARTS AL-  
WAYS MENTION THIS MODEL & SERIAL NO  
MODEL





**PARTS LIST FOR MODEL 2500-3-6**

REF. NO.	PART NO.	COLOR CODE	DESCRIPTION	NEW PART	REF. NO.	PART NO.	COLOR CODE	DESCRIPTION	NEW PART
1	710-0191		Hex Scr. 3/8-24 x 1.25" Lg. *		43	716-0103		"E"-Ring for 5/16" Dia. Shaft	
2	736-0217		L-Wash. 3/8" Scr. H.D.		44	736-0195		FI-Wash. .344 I.D. x .88 O.D. x .040	
3	753-0135		Blade Adapter Kit	N	45	—		Engine	
4	710-0117		Hex Scr. 5/16-24 x 1.00" Lg. *		46	09966		Hand Knob	
5	742-0177		22" Blade	N	47	1155-23		Lever and Brkt. Ass'y.	
7	748-0251		Blade Adapter	N	48	1547-46		Pivot Pin	
8	736-0119		L-Wash. 5/16" Scr. *		49	1650-44		"E"-Ring	
9	712-0123		Hex Nut 5/16-24" Thd.		50	1540-25		FI-Wash. .43" I.D. x 1.25" O.D. x .030	
10	714-0138		#6 Woodruff Key 5/32" x 5/8" Dia.		51	1705-35		Handle Upstop Lever	
11	1102-249—497		22" Deck Ass'y.		52	1547-48		Pin—Upstop	
12	716-0104		"E"-Ring for .50" Dia. Shaft		53	1624-188		Spacer .22" I.D. x .32 O.D. x .100	
13	1552-2		Wave Wash. .50" Scr.		54	1543-58		Rubber Wash. .38" I.D. x .75 O.D. x .190	
14	1540-90		FI-Wash. .51" I.D. x 1.00" O.D. x .030		55	1540-55		FI-Wash. .218" I.D. x .75" O.D. x .062	
15	2123-32		Front Axle Ass'y.—L.H.		56	710-0442		Hex Scr. 5/16-18 x 1.50" Lg. *	
16	1540-86		FI-Wash. .51" I.D. x 1.00" O.D. x .125		57	736-0119		L-Wash. 5/16" Scr. *	
17	731-0183		Hub Cap		58	712-0429		Hex Ins. L-Nut 5/16-18 Thd.	
18	710-0405		Curved Car. Bolt 5/16-18 x 1.75" Lg.		59	1545-11		Clevis pin .25" Dia. x .50" Lg.	
20	2108-226		Front Wheel Ass'y.—Comp. 8 x 1.75		60	1543-38		Height Adjustment Knob	
21	2643-43		Height Adjuster Knob		61	710-0589		Hex AB-Tap Scr. #10 x .75" Lg.	
22	710-0589		Hex "AB" Tap Scr. #10 x .75" Lg.		64	1118-52 —497		Rear Deck Cover	
23	2639-56 —497		Chain Guard		65	1547-45		Handle Pin—L.H.	
24	2123-33		Front Axle Ass'y.—R.H.		66	1548-15		Spring Roll Pin .188" Dia. x 1.00" Lg.	
25	1652-120		Bearing		67	1108-235		Rear Wheel Ass'y. Comp.—L.H. 8 x 1.75	N
26	717-0252		Pawl		68	749-0224		Lower Handle	
28	736-0187		FI-Wash. .51" I.D. x 1.25 O.D. x .060"		69	3556-42		Rear Protective Flap	
29	736-0116		FI-Wash. .63 I.D. x .94 O.D. x .060"		70	1540-55		FI-Wash. .218" I.D. x .75" O.D. x .062	
30	749-0227		Upper Handle	N	72	736-0160		FI-Wash. .51" I.D. x .94" O.D. x .060	
31	41-054		Ph. Hd. Sems Scr. #10-32 x .50" Lg.		73	728-0120		Pop Rivet .250" Dia. x .447 Lg.	
32	1108-236		Rear Wheel Ass'y. Comp.—R.H. 8 x 1.75		74	2708-11		Deflector Hinge	
33	2643-23		Throttle Control Knob		76	1642-143		Chute Deflector Spring	
35	1652-128		Sleeve Brg.		77	728-0554		Rivet—.189" Dia. x .250" Lg.	
36	726-0130		Speed Nut #10Z		79	1708-12		Deflector Hinge	
37	1642-105		Extension Spring		80	2189-13 —497		Chute Deflector Ass'y.	
38	1652-128		Sleeve Brg.		81	1548-31		Roll Pin—.188" Dia. x 4.25" Lg.	
39	1652-104		Sleeve Brg. .50" I.D. x .75" O.D. x .75" Lg.		82	2639-68		Toe Guard	
40	1132-101—497		Brkt. and Brg. Ass'y.		83	1533-18		Pop Rivet—.188" Dia. x .652" Lg.	
42	1624-188		Spacer		85	41-019		FI-Wash.	

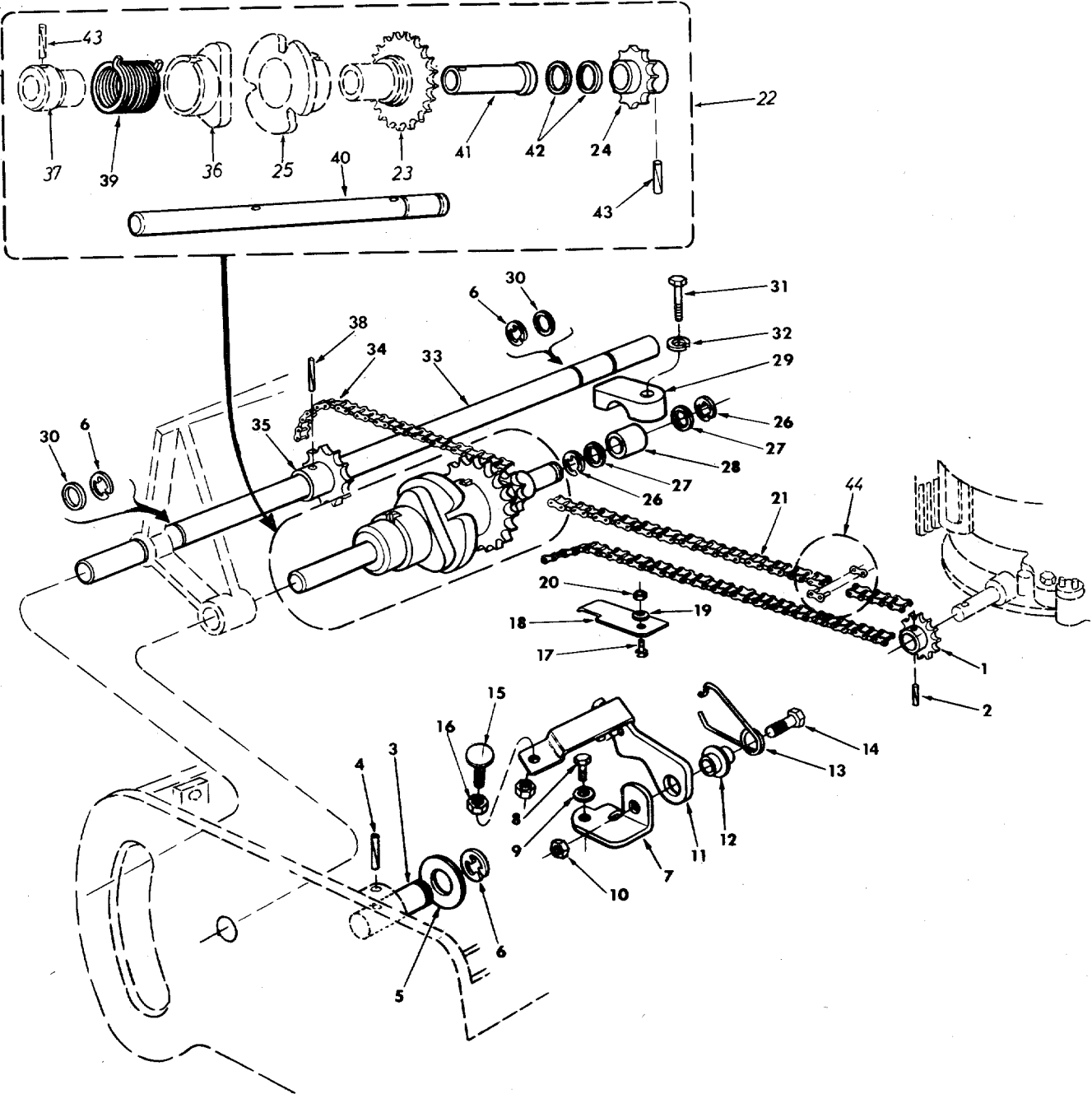
\*For faster service obtain standard nuts, bolts and washers locally. If these items cannot be obtained locally, order by part number and size as shown on parts list.

(497—Yard-Man Red) When ordering parts if color or finish is important, use color code shown at left. (e.g. Yard-Man Red Finish 1102-249 (497).)

The engine is not under warranty by the mower manufacturer. If repairs or service is needed on the engine, please contact your nearest authorized engine service outlet. Check the "Yellow Pages" of your telephone book under "Engines — Gasoline."



2500-3-6



**PARTS LIST FOR MODEL 2500-3-6**

REF. NO.	PART NO.	COLOR CODE	DESCRIPTION	NEW PART
1	1638-55		12 Tooth Sprocket	
2	715-0248		Spring Roll Pin 3/16" Dia. x .75" Lg.	
3	1547-59		Handle Pivot Pin—R.H.	
4	1548-15		Spring Roll Pin 3/16" Dia. x 1.00" Lg.	
5	736-0160		FI-Wash. .51 I.D. x .94 O.D.	
6	716-0104		"E"-Ring for .500" Dia. Shaft	
7	1609-575		Actuator Mtg. Brkt.	
8	710-0621		Hex Scr. 5/16-18 x .50" Lg. *	
9	736-0119		L-Wash. 5/16" Scr. *	
10	712-0429		Hex Ins. L-Nut 5/16-18 Thd.	
11	1155-40		Actuating Lever and Spring Ass'y.	
12	1657-89		Bushing	
13	2642-131		Torsion Spring	
14	710-0376		Hex Scr. 5/16-18 x 1.00" Lg. *	
15	1513-67		Special Bolt 1/4-20 Thd.	
16	1539-92		Hex Jam Nut 1/4-20 Thd.	
17	710-0473		Truss Mach. Scr. #10-24 x .50" Lg. *	
18	1724-18		Chain Idler Keeper	
19	736-0722		L-Wash. #10 Scr.	
20	712-0121		Hex Nut #10-24 Thd. *	
21	1654-25		Chain—.250" Pitch x .98 Links	
22	1175-18		Clutch Ass'y.—Comp.	
23	CM-1-202776		Sprocket 25 Tooth .250" Pitch	
24	1638-45		Sprocket 13 Tooth .250" Pitch	
25	CM-1-11391		Release Collar Inner	
26	1650-44		"E"-Ring 7/16" Dia. Shaft	
27	1540-133		FI-Wash. .44 I.D. x .670 O.D.	
28	1652-97		Sleeve Brg. .44 I.D. x .56 O.D. x .75" Lg.	
29	1629-64		Retainer	
30	736-0187		FI-Wash. .64 I.D. x 1.250 O.D.	
31	710-0207		Hex Wash. Hd. Scr. 1/4-20 x 1.00" Lg. *	
32	736-0329		L-Wash. 1/4" Scr. *	
33	2632-191		Rear Drive Shaft	
34	1654-26		Chain—.250" Pitch x 32 Links	
35	1638-60		18 Tooth Sprocket x .250" Pitch	
36	CM-1-11392		Release Collar Outer	
37	CM-1-202908		Clutch Coupling Inner	
38	715-0105		Spring Roll Pin .188" Dia. x 1.50" Lg. *	
39	1642-136		Clutch Spring	
40	1632-190		Auxiliary Shaft w/o Hole	
41	1652-129		Bearing—Clutch	
42	CM-1-203542		FI-Wash.	
43	CM-4-202886		Spring Pin Spiral 3/16" Dia. x 1.38" Lg.	
44	0113-31		Master Link for .250" Pitch Chain	

# PARTS INFORMATION

## POWER EQUIPMENT PARTS AND SERVICE

Parts and service for all YARD-MAN manufactured power equipment are available through the authorized service firms listed below. All orders should specify the model number of your unit, parts numbers, description of parts and the quantity of each part required.

<b>ARKANSAS</b>	<b>LITTLE ROCK</b>	Industrial Equip Service...2816 W. 12th St. ....72204
	<b>PINE BLUFF</b>	Northern Saw Co. ....W. 4th & Hwy. 65-Box 7412....71601
<b>CALIFORNIA</b>	<b>CHICO</b>	Midway Equip. Co., Inc. ... 2863 Midway .....95926
	<b>SAN BERNARDINO</b>	Lawnmower Supply Co. ....25608 E. Baseline .....95926
	<b>SANTA FE SPRINGS</b>	Midway Equip. Co., Inc. ... 13517 Alondra Blvd. ....90670
<b>DELAWARE</b>	<b>ELSMERE, WILMINGTON</b>	Jay C. Pownall, Inc. .... 2 N. Colonial Ave. ....19805
<b>FLORIDA</b>	<b>CORAL GABLES, MIAMI</b>	Moz-All of Florida, Inc. ....365 Greco .....33146
	<b>OCALA</b>	Lovell Bros., Inc. .... 320 N.W. 10th St. ....32670
	<b>TAMPA</b>	Spicola Hardware Co. ....Box 5087-605 19th St. ....33605
	<b>JACKSONVILLE</b>	Radco Dist., Inc. .... 2403 Market St. ....32206
<b>GEORGIA</b>	<b>ATLANTA</b>	Beck & Gregg Industries... Outdoor Power Products Div. Box 984-217 Luckie St., N.W. ...30301
<b>ILLINOIS</b>	<b>SALEM</b>	The C.J. Heck Co. .... Rt. #37 North-Box 689.....62881
<b>INDIANA</b>	<b>EVANSVILLE</b>	Midwest Equip. & Supply...901 Keck .....47711
	<b>FORT WAYNE</b>	Lynn Koehlinger Co. .... 3675 North Wells-Box 96.....46801
<b>KENTUCKY</b>	<b>HEBRON</b>	J.A. Stevens Mower Co. ....P.O. Box 38 .....41048
	<b>HOPKINSVILLE</b>	Cayce Mill Supply Co. .... 505 East First St. ....42240
<b>LOUISIANA</b>	<b>BATON ROUGE</b>	S&S Distributing Co. .... 1307 Main St.-Box 2321.....70821
<b>MAINE</b>	<b>BANGOR</b>	M.L. Coffin Co. .... 725 Broadway .....04401
<b>MASSACHUSETTS</b>	<b>SOUTHBORO</b>	Crandall-Hicks Co. .... Rt. # 9 .....01772
<b>MICHIGAN</b>	<b>FERNDALE</b>	Ideal Mower Sales, Inc. ....811 Woodward Heights.....48220
	<b>GRAND RAPIDS</b>	Jac Van Dist., Inc. .... 4477 E. Paris, S.E. ....49508
	<b>JACKSON</b>	Factory Branch ..... 440 East Prospect .....49202
<b>MISSOURI</b>	<b>ROLLA</b>	Ozark Equip. Co., Inc. .... Hwy. 63 & Black St.-Box 784..65401
<b>MONTANA</b>	<b>BILLINGS</b>	Parker Montana Co. ....511 North 21st. St. ....59101
<b>NEBRASKA</b>	<b>OMAHA</b>	K.K. Co., Inc. .... 711 S. 15th St. ....68100
<b>NEW JERSEY</b>	<b>PARSIPPANY</b>	Elmco Dist., Inc. .... 2 Eastmans Rd. ....07054

## BRIGGS & STRATTON, TECUMSEH AND PEERLESS PARTS AND SERVICE

Briggs & Stratton, Tecumseh and Peerless parts and service should be handled by your nearest authorized engine service firm. Check the yellow pages of your telephone directory under the listing *Engines* — *Gasoline*, Briggs & Stratton or Tecumseh Lauson —

<b>NEW YORK</b>	<b>BINGHAMTON</b>	Kingsley Co., Inc. .... Box 726 .....13902
<b>NORTH CAROLINA</b>	<b>WINSTON-SALEM</b>	Carswell Dist., Co. .... 3750 N. Liberty St.-Box 4193 North Station.....27105
<b>NORTH DAKOTA</b>	<b>FARGO</b>	Rott-Keller Supply Co. ....1620 First Ave., North.....58102
<b>OHIO</b>	<b>CLEVELAND</b>	Tecca Dist., Co. .... 4747 Manufacturing Ave. ....44135
<b>OKLAHOMA</b>	<b>MUSKOGEE</b>	C.J. Heck Co. of Oklahoma ..Box 1572-Hwy. 69 South...74401
	<b>ADA</b>	ADA Auto Supply .....Box 338-301 E. 12th St. ....74820
<b>PENNSYLVANIA</b>	<b>ALLISON PARK</b>	Northern Seed & Tractor, Inc. ....4630 Rt.#8 .....15101
<b>RHODE ISLAND</b>	<b>JOHNSTON</b>	Barker-Chadsey Co. .... 27 Mill St. ....02919
<b>TENNESSEE</b>	<b>BRISTOL</b>	Mitchell-Powers Hardware Co. ... 5th St. Extension.....37623
	<b>NASHVILLE</b>	Garrett-Moore, Inc. .... 1310 Davidson St. ....37206
	<b>KNOXVILLE</b>	Master Repair Service.....2423 Broadway, N.E.....37917
	<b>UNION CITY</b>	Graves Dist. Co., Inc. ....1318 Stad Ave. ....38261
<b>TEXAS</b>	<b>FORT WORTH</b>	Woodson Sales Corp. .... 1702 N. Sylvania .....76111
	<b>HOUSTON</b>	Outdoor Equip., Inc. ....8000 Harwin St.-Box 42146..77042
<b>UTAH</b>	<b>SALT LAKE CITY</b>	Porter Walton Co. .... Box 1619-470 W. 6th S. St. ....84110
<b>VIRGINIA</b>	<b>LYNCHBURG</b>	Bailey-Spencer Hardware Co. ... 1016-26 Commerce St. ...24505
	<b>RICHMOND</b>	Universal Tractor Equip. Corp. Box 5489 928 N. Meadow St. ....23220
	<b>ROANOKE</b>	Graves.Humphreys, Inc. ...1948 Franklin Rd- S.W. ....24014
<b>WEST VIRGINIA</b>	<b>BLUEFIELD</b>	Bluefield Supply Co. .... Box 269-Mercer St. ....24701
<b>WISCONSIN</b>	<b>CHILTON</b>	Horst Dist. Co., Inc. .... 444 N. Madison St. ....53014
	<b>OAK CREEK</b>	Four Season's Equip. Co. .7373 South Sixth St. ....53145
<b>CANADA</b>	<b>NORTH BURNABY, B.C.</b>	Challenger Equip., LTD. ...Box 2010-6939 Hastings St..
	<b>POINTE CLAIRE, QUEBEC</b>	Terry Industries ..... 180 Labrosse Ave. ....
	<b>EDMONTON, ALBERTA</b>	Ralph H. Wilson & Co., LTD. 9653-105A Ave. ....

### WARRANTY PARTS AND SERVICE POLICY

The purpose of warranty is to protect the customer from defects in workmanship and materials, defects which are NOT detected at the time of manufacture. It does not provide for the unlimited and unrestricted replacement of parts. Use and maintenance are the responsibility of the customer. The manufacturer cannot assume responsibility for conditions over which it has no control. Simply put, if it's the manufacturer's fault, it's the manufacturer's responsibility; if it's the customer's fault, it's the customer's responsibility.

#### CLAIMS AGAINST THE MANUFACTURER'S WARRANTY INCLUDES

1. Replacement of Missing Parts on new equipment.
2. Replacement of Defective Parts within the warranty period.
3. Repair of Defects within the warranty period.

All claims MUST be substantiated with the following information:

1. Model Number of unit involved.
2. Date unit was purchased or first put into service.
3. Date of failure.
4. Nature of failure.