

Owner's Operating Service Instruction Manual

10¢

Model No.
2440-3-6

- ASSEMBLY
- OPERATION
- REPAIR PARTS

20" ROTARY MOWER

YARD-MAN

YARD-MAN COMPANY • 5389 WEST 130th STREET • P. O. BOX 2741 CLEVELAND OHIO 44111

IMPORTANT

It is suggested that this manual be read in its entirety before attempting to assemble or operate. Keep this manual in a safe place for future reference and for ordering replacement parts.

This unit is shipped WITHOUT GASOLINE or OIL. After assembly, see operating section of this manual for proper fuel and amount.

SAFE OPERATION PRACTICES FOR WALK-BEHIND MOWERS

TRAINING

1. Read the Operating and Service Instruction Manual carefully. Be thoroughly familiar with the controls and the proper use of the equipment.
2. Never allow children to operate a power mower.
3. Keep the area of operation clear of all persons, particularly small children and pets.

PREPARATION

1. Thoroughly inspect the area where the equipment is to be used and remove all stones, sticks, wire, bones and other foreign objects.
2. Do not operate equipment when barefoot or wearing open sandals. Always wear substantial footwear.
3. Check the fuel before starting the engine. Do not fill the gasoline tank indoors, when the engine is running, or while the engine is still hot. Wipe off any spilled gasoline before starting the engine.
4. Disengage the self-propelled mechanism or drive clutch on units so equipped before starting the engine.
5. Never attempt to make a wheel adjustment while the engine is running.
6. Mow only in daylight or in good artificial light.
7. Never operate the equipment in wet grass. Always be sure of your footing; keep a firm hold on the handle and walk, never run.

OPERATION

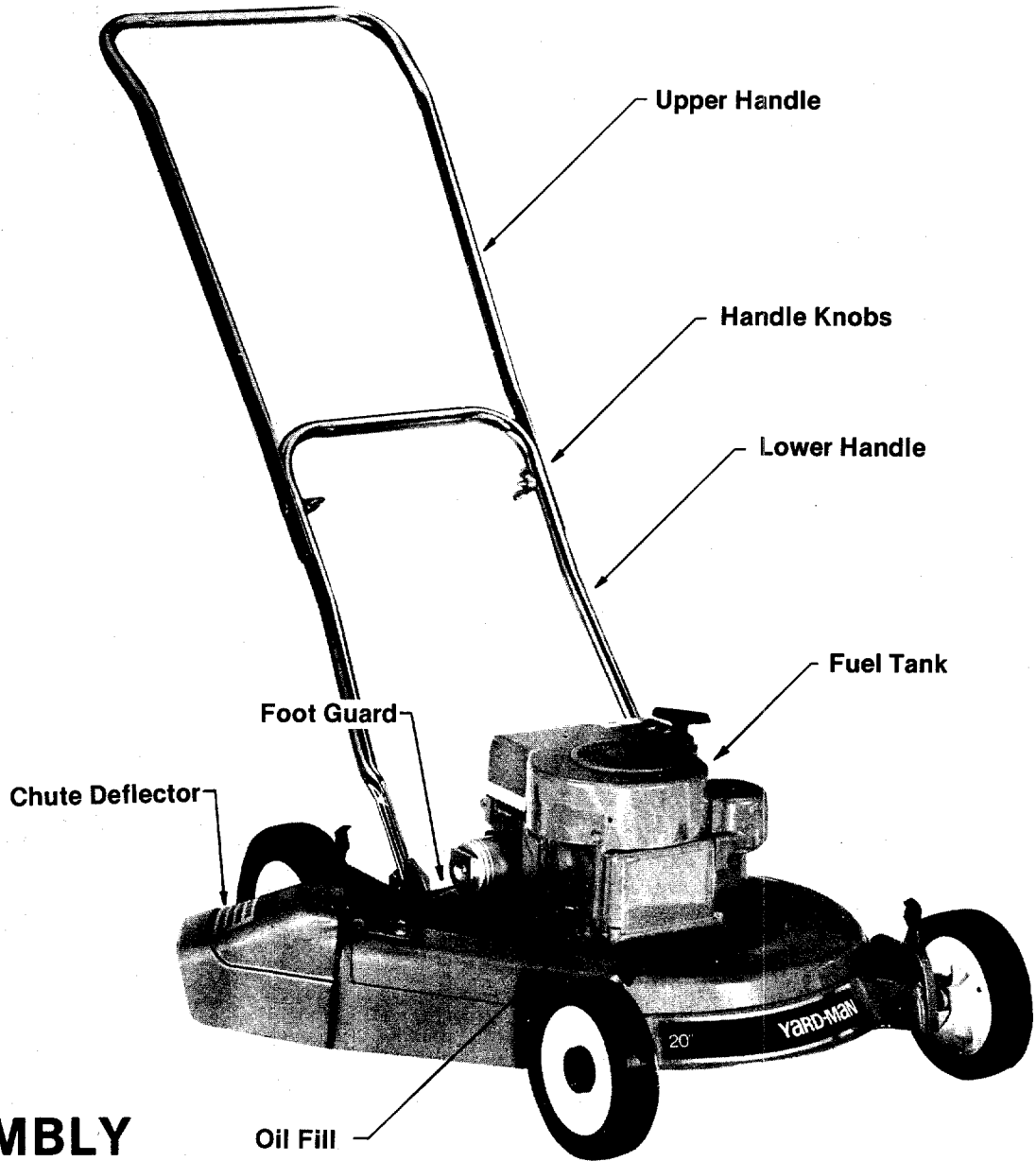
1. Do not change the engine governor settings or overspeed the engine.
2. Do not put hands or feet near or under rotating parts. Keep clear of the discharge opening at all times.
3. Stop the blade(s) when crossing gravel drive, walks or roads.
4. After striking a foreign object, stop the engine, remove the wire from the spark plug, thoroughly inspect the mower for any damage, and repair the damage before restarting and operating the mower.

5. If the equipment should start to vibrate abnormally, stop the engine and check immediately for the cause. Vibration is generally a warning of trouble.
6. Stop the engine whenever you leave the equipment, before cleaning the mower housing, and when making any repairs or inspections.
7. When cleaning, repairing or inspecting, make certain the blade and all moving parts have stopped. Disconnect the spark plug wire, and keep the wire away from the plug to prevent accidental starting.
8. Do not run the engine indoors.
9. Shut the engine off and wait until the blade comes to a complete stop before removing the grass catcher or unclogging chute.
10. Mow across the face of slopes, never up-and-down. Exercise extreme caution when changing direction on slopes. Do not mow excessively steep slopes.
11. Always disconnect electric mowers (line operated) before cleaning, repairing or adjusting.
12. Never operate mower without proper guards, plates or other safety protective devices in place.
13. Keep washout ports and other mower-housing service openings closed when mowing.

MAINTENANCE AND STORAGE

1. Check the blade and engine mounting bolts at frequent intervals for proper tightness.
2. Keep all nuts, bolts, and screws tight to be sure the equipment is in safe working condition.
3. Never store the equipment with gasoline in the tank inside of a building where fumes may reach an open flame or spark. Allow the engine to cool before storing in any enclosure.
4. To reduce fire hazard, keep the engine free of grass, leaves, or excessive grease.
5. Check the grass catcher bag frequently for wear or deterioration. Replace with new bag for safety protection.

PREPARING YOUR YARD-MAN MOWER FOR USE



ASSEMBLY

Your mower is shipped in one carton completely assembled with the handle assembly, foot guard deflector and missile deflector in the shipping or storage position. To remove your mower from the carton, slit the end of the carton and roll the mower out. Prepare your mower for use with the following steps:

Step 1. Move the foot guard and missile deflector down to operating position.

Step 2. To place handle in operating position, make sure the handle knobs are loose enough to

allow the upper section to pivot freely around the mounting bolts. Lift the handle assembly until the lower section snaps into the operating position, as shown. The upper section can now be moved into place. Tighten the handle mounting knobs.



Make sure the handle knobs are loose enough to allow the upper section to pivot freely around the mounting bolts.

BEFORE STARTING ENGINE

Remove oil fill plug and fill the crankcase to overflowing with SAE No. 30 oil. (1¼ pints approx.)

Fill fuel tank with a good grade regular clean, fresh gasoline. **DO NOT MIX OIL WITH GASOLINE. FOR COMPLETE ENGINE INFORMATION, READ ENGINE INSTRUCTIONS BOOKLET BEFORE STARTING ENGINE.**

TO START ENGINE

1. Place throttle control knob in FAST or RUN position.
2. While standing at the left side of the mower, opposite the discharge chute, pull the starter rope with a quick full stroke. Repeat if necessary.
3. When engine starts, move throttle control knob to slow speed until engine warms up.



If engine floods, place throttle control knob in "Stop Position." Pull starter rope at least 4 times. This will clear the engine of excess gas. Then reposition control lever to "Run" position and follow the normal starting procedure.

Engine flooding is usually caused by a dirty air cleaner. Service air cleaner regularly as noted in engine instruction manual.

If engine continues to flood even with a clean air filter, lean carburetor adjustment screw 1/8 turn. (See engine instructions.)

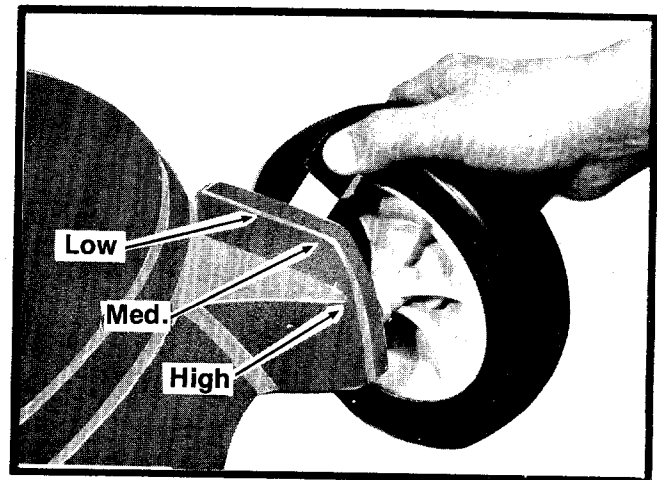
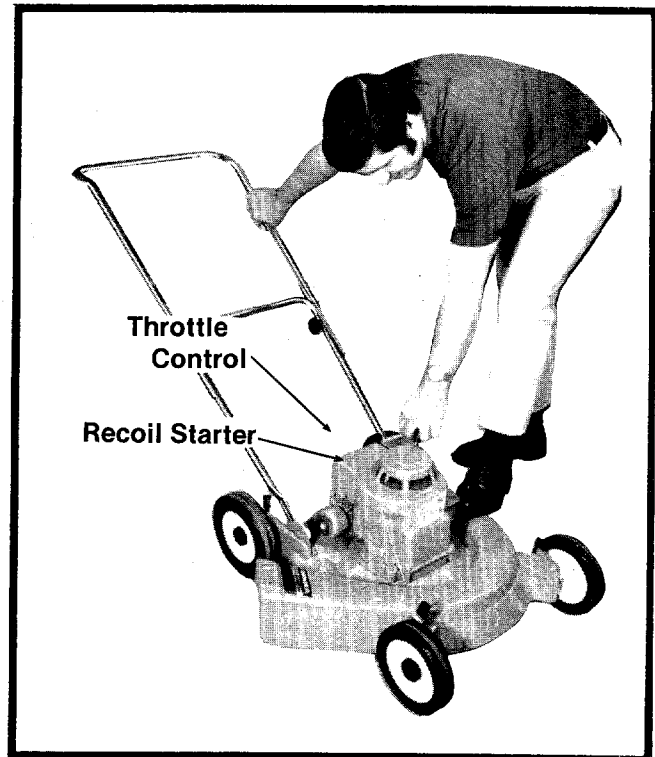
TO ADJUST HEIGHT OF CUT

The cutting height of your mower can easily be adjusted from low to high cut. Place your hand on the outside of the wheel, spring the adjusting lever, with your thumb, outward until the locating trunnion on the lever is free from the housing. Move the wheel and lever to the height of cut desired. Release the lever, allowing the trunnion to drop into the proper locating hole.



CAUTION

Do not make adjustments with the engine running.



TO CHANGE OIL

Engine oil should be changed after the first 5 hours of operation and each 25 hours of operation thereafter.

Drain oil while engine is warm. Disconnect spark plug wire and secure at least 1" away from spark plug. Block right hand side of mower up about 4" high and set shallow one quart container beneath oil drain. Remove oil drain plug from sump and allow oil to drain completely. Replace plug and refill with SAE #30 oil. (1¼ pints approx.)

BREAK-IN PERIOD

During the first ten hours of operation, check the following items frequently:

- Oil Level
- All nuts, bolts and screws for tightness
- Condition of Blade

Cutting Blade—The blade may easily be removed for grinding or replacement as follows:

1. Remove bolt and lockwasher holding blade and blade adapter to engine crankshaft.
2. Remove blade and blade adapter from engine crankshaft.

3. Remove two bolts, lockwashers and nuts holding blade to blade adapter (if necessary).

When sharpening blade, follow the original angle of grind as a guide. It is extremely important that each cutting edge receives an equal amount of grinding to prevent an unbalanced blade. An unbalanced blade will cause excessive vibration when rotating at high speeds and may cause personal injury or damage to the mower. Upon reassembly, make certain all parts are assembled properly and tightened securely.

SUGGESTIONS FOR MORE EFFICIENT, AND MAINTENANCE-FREE OPERATION

GENERAL MOWING

1. Always keep mower blade "Knife" sharp and balanced for maximum cutting efficiency.
2. Always start engine with mower on level surface where blade will not drag on tall grass or other obstructions. After starting, let engine warm up several minutes at slow speed before starting to mow.
3. When mowing under normal conditions, run mower at $\frac{1}{2}$ to $\frac{3}{4}$ throttle for best results.
4. When cutting tall heavy growth, or on rough ground, place mower in highest cut position and gradually reduce to desired cutting height over course of two or three mowings.
5. When cutting tall heavy lush grass the clippings may have a tendency to stick to the underside of the housing. Always keep underside of housing clean.

3. Check all nuts, bolts and screws occasionally to be sure mower is in good operating condition.
4. Should excessive vibration develop, check your blade and crankshaft immediately. Do not operate mower with an unbalanced blade, a damaged blade or a damaged crankshaft.
5. The wheel bearings are pre-lubricated at the factory and should require no further attention until mower is serviced. However, it is advisable to remove the wheels and apply a small amount of light oil to each axle, at least once a season.
6. If you are going to store your mower for any length of time (30 days or longer) it is important that the following steps be taken:
 - a. Drain the gas tank. Start the engine and allow it to run out of gas. Gasoline left in the engine will leave gum deposits in the carburetor and gas tank.
 - b. Clean engine of all foreign matter.
 - c. Lubricate cylinder by removing the spark plug and pouring one ounce of clean lubricating oil through the spark plug hole into the cylinder. Crank engine slowly to spread oil and replace spark plug. To start after storage remove spark plug and rotate engine with starter to remove excess oil.

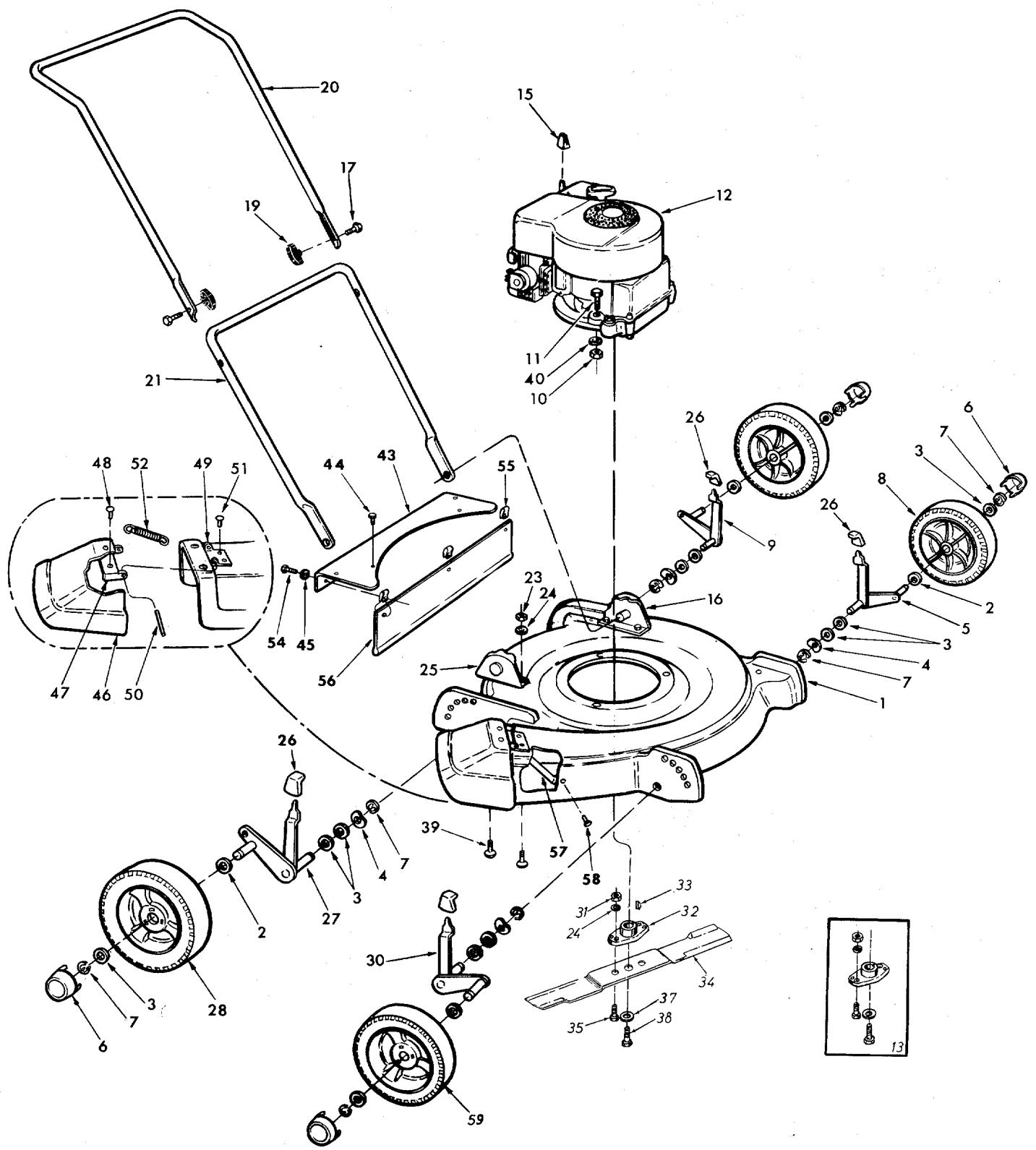
MAINTENANCE

Your mower like all machines with moving parts must receive care and maintenance. The following tips, if used, will contribute many trouble-free hours to your mower.

1. Check oil level frequently. When changing oil, make sure dirt and debris is cleaned off oil sump before removing oil plug.
2. Keep mower clean, especially the engine and underside of mower housing.

7. Just as your automobile needs professional mechanical maintenance from time to time, so does your air cooled engine. A yearly tune-up and check by a qualified service center is recommended to avoid breakdowns and unnecessary delays during the cutting season.

2440-3-6



PARTS LIST FOR MODEL 2440-1

REF. NO.	PART NO.	COLOR CODE	DESCRIPTION	NEW PART	REF. NO.	PART NO.	COLOR CODE	DESCRIPTION	NEW PART
1	1102-245	—497	20" Deck Ass'y.		30	2123-30		Front Axle Ass'y.—R.H.	
2	1540-86		FI-Wash. .51 I.D. x 1.00" O.D. x .060		31	712-0123		Hex Nut 5/16-24 Thd.*	N
3	1540-90		FI-Wash. .51" I.D. x 1.00" O.D. x .030		32	748-0251		Blade Adapter	
4	1552-2		Wave Wash. for .50" Scr.		33	714-0138		#6 Woodruff Key 5/32" x 5/8" Dia.	N
5	2123-31		Front Axle Ass'y.—L.H.		34	742-0176		20" Blade	N
6	731-0183		Hub Cap		35	710-0117		Hex Scr. 5/16-24 x 1.00" Lg.	
7	716-0104		"E"-Ring for .50" Dia. Shaft		37	736-0217		L-Wash. 3/8" Scr. H.D.	
8	2108-230		Front Wheel Ass'y. Comp.— 7 x 1.75		38	710-0191		Hex Scr. 3/8-24 x 1.25" Lg.	
9	2123-33		Rear Axle Ass'y.—L.H.		39	710-0134		Carriage Bolt 1/4-20 x .62" Lg.*	
10	712-0267		Hex Nut 5/16-18 Thd.*		40	736-0119		L-Wash. 5/16" Scr.*	
11	710-0442		Hex Scr. 5/16-18 x 1.50" Lg.*		43	3622-175	—497	Rear Deck Cover	
12	—		Engine		45	1540-55		FI-Wash. .22" I.D. x .62" O.D. x .060	
13	753-0135		Blade Adapter Kit	N	46	2189-13	—497	Chute Deflector Ass'y.	
15	2643-28		Throttle Control Knob		47	1708-12		Deflector Hinge	
16	2132-168		Handle Mount Brkt. Ass'y.— L.H.		48	728-0554		Rivet .188" Dia. x .25" Lg.	
17	710-0405		Curved Carriage Bolt 5/16-18 x 1.75" Lg.		49	2708-11		Deflector Hinge	
19	09966		Hand Knob		50	1548-31		Roll Pin .188" Dia. x 4.25" Lg.	
20	749-0227		Upper Handle	N	51	728-0120		Pop Rivet .250" Dia. x .447" Lg.	
21	749-0233		Lower Handle	N	52	1642-143		Deflector Spring	
23	712-0107		Hex Cent. L-Nut 1/4-20 Thd.		54	710-0589		Hex "AB" Tap Scr. #10 x .75" Lg.	
24	736-0119		L-Wash. 5/16" Scr.*		55	726-0130		Speed Nut #10Z	
25	2132-166		Handle Mount Brkt. Ass'y.— R.H.		56	3556-41		Rear Protective Flap	
26	2643-43		Height Adjustment Knob		57	2639-68		Toe Guard	
27	2123-32		Rear Axle Ass'y.—R.H.		58	1533-18		Rivet .188" Dia. x .652" Lg.	
28	2108-226		Rear Wheel Ass'y. Comp.— 8 x 1.75		59	2108-230		Front Wheel Ass'y.—Comp. 7 x 1.75	

*For faster service obtain standard nuts, bolts and washers locally. If these items cannot be obtained locally, order by part number and size as shown on parts list.

(497—Yard-Man Red)

When ordering parts if color or finish is important, use color code shown at left. (e.g. Yard-Man Red Finish 1102-245 (497).)

The engine is not under warranty by the mower manufacturer. If repairs or service is needed on the engine, please contact your nearest authorized engine service outlet. Check the "Yellow Pages" of your telephone book under "Engines — Gasoline."



PARTS INFORMATION

POWER EQUIPMENT PARTS AND SERVICE

Parts and service for all YARD-MAN manufactured power equipment are available through the authorized service firms listed below. All orders should specify the model number of your unit, parts numbers, description of parts and the quantity of each part required.

ARKANSAS	LITTLE ROCK	Industrial Equip Service...2816 W. 12th St.	72204	
	PINE BLUFF	Northern Saw Co.W. 4th & Hwy. 65-Box 7412....	71601	
CALIFORNIA	CHICO	Midway Equip. Co., Inc....2863 Midway	95926	
	SAN BERNARDINO	Lawnmower Supply Co.25608 E. Baseline	95926	
	SANTA FE SPRINGS	Midway Equip. Co., Inc....13517 Alondra Blvd.	90670	
DELAWARE	ELSMERE, WILMINGTON	Jay C. Pownall, Inc.2 N. Colonial Ave.	19805	
FLORIDA	CORAL GABLES, MIAMI	Moz-All of Florida, Inc....365 Greco	33146	
	OCALA	Lovell Bros., Inc.320 N.W. 10th St.	32670	
	TAMPA	Spicola Hardware Co.Box 5087-605 19th St.	33605	
	JACKSONVILLE	Radco Dist., Inc.2403 Market St.	32206	
GEORGIA	ATLANTA	Beck & Gregg Industries... Outdoor Power Products Div. Box 984-217 Luckie St., N.W.	30301	
ILLINOIS	SALEM	The C.J. Heck Co. Rt. #37 North-Box 689.....	62881	
INDIANA	EVANSVILLE	Midwest Equip. & Supply...901 Keck	47711	
	FORT WAYNE	Lynn Koehlinger Co.3675 North Wells-Box 96.....	46801	
KENTUCKY	HEBRON	J.A. Stevens Mower Co....P.O. Box 38	41048	
	HOPKINSVILLE	Cayce Mill Supply Co.505 East First St.	42240	
LOUISIANA	BATON ROUGE	S&S Distributing Co.1307 Main St.-Box 2321.....	70821	
MAINE	BANGOR	M.L. Coffin Co.725 Broadway	04401	
MASSACHUSETTS	SOUTHBORO	Crandall-Hicks Co. Rt.# 9	01772	
MICHIGAN	FERNDALE	Ideal Mower Sales, Inc.811 Woodward Heights.....	48220	
	GRAND RAPIDS	Jac Van Dist., Inc.4477 E. Paris, S.E.	49508	
	JACKSON	Factory Branch	440 East Prospect	49202
MISSOURI	ROLLA	Ozark Equip. Co., Inc. Hwy. 63 & Black St.-Box 784..	65401	
MONTANA	BILLINGS	Parker Montana Co.511 North 21st. St.	59101	
NEBRASKA	OMAHA	K.K. Co., Inc.711 S. 15th St.	68100	
NEW JERSEY	PARSIPPANY	Elmco Dist., Inc.2 Eastmans Rd.	07054	

BRIGGS & STRATTON, TECUMSEH AND PEERLESS PARTS AND SERVICE

Briggs & Stratton, Tecumseh and Peerless parts and service should be handled by your nearest authorized engine service firm. Check the yellow pages of your telephone directory under the listing *Engines* _____ *Gasoline*, Briggs & Stratton or Tecumseh Lauson _____

NEW YORK	BINGHAMTON	Kingsley Co., Inc. Box 726	13902	
NORTH CAROLINA	WINSTON-SALEM	Carswell Dist., Co.3750 N. Liberty St.-Box 4193 North Station.....	27105	
NORTH DAKOTA	FARGO	Rott-Keller Supply Co.1620 First Ave., North.....	58102	
OHIO	CLEVELAND	Tecca Dist., Co.4747 Manufacturing Ave.	44135	
OKLAHOMA	MUSKOGEE	C.J. Heck Co. of Oklahoma ..Box 1572-Hwy. 69 South...	74401	
	ADA	ADA Auto Supply	Box 338-301 E. 12th St.	74820
PENNSYLVANIA	ALLISON PARK	Northern Seed & Tractor, Inc....4630 Rt.#8	15101	
RHODE ISLAND	JOHNSTON	Barker-Chadsey Co.27 Mill St.	02919	
TENNESSEE	BRISTOL	Mitchell-Powers Hardware Co. ...5th St. Extension.....	37623	
	NASHVILLE	Garrett-Moore, Inc.1310 Davidson St.	37206	
	KNOXVILLE	Master Repair Service.....	2423 Broadway, N.E.....	37917
	UNION CITY	Graves Dist. Co., Inc.....	1318 Stad Ave.	38261
TEXAS	FORT WORTH	Woodson Sales Corp.1702 N. Sylvania	76111	
	HOUSTON	Outdoor Equip., Inc.8000 Harwin St.-Box 42146..	77042	
UTAH	SALT LAKE CITY	Porter Walton Co. Box 1619-470 W. 6th S. St.	84110	
VIRGINIA	LYNCHBURG	Bailey-Spencer Hardware Co. ...1016-26 Commerce St.	24505	
	RICHMOND	Universal Tractor Equip. Corp. Box 5489 928 N. Meadow St.	23220	
	ROANOKE	Graves.Humphreys, Inc. ...1948 Franklin Rd- S.W.	24014	
WEST VIRGINIA	BLUEFIELD	Bluefield Supply Co. Box 269-Mercer St.	24701	
WISCONSIN	CHILTON	Horst Dist. Co., Inc.444 N. Madison St.	53014	
	OAK CREEK	Four Season's Equip. Co.7373 South Sixth St.	53145	
CANADA	NORTH BURNABY, B.C.	Challenger Equip., LTD.Box 2010-6939 Hastings St..		
	POINTE CLAIRE, QUEBEC	Terry Industries	180 Labrosse Ave.	
	EDMONTON, ALBERTA	Ralph H. Wilson & Co., LTD. 9653-105A Ave.		

WARRANTY PARTS AND SERVICE POLICY

The purpose of warranty is to protect the customer from defects in workmanship and materials, defects which are NOT detected at the time of manufacture. It does not provide for the unlimited and unrestricted replacement of parts. Use and maintenance are the responsibility of the customer. The manufacturer cannot assume responsibility for conditions over which it has no control. Simply put, if it's the manufacturer's fault, it's the manufacturer's responsibility; if it's the customer's fault, it's the customer's responsibility.

CLAIMS AGAINST THE MANUFACTURER'S WARRANTY INCLUDES

1. Replacement of Missing Parts on new equipment.
2. Replacement of Defective Parts within the warranty period.
3. Repair of Defects within the warranty period.

All claims MUST be substantiated with the following information:

1. Model Number of unit involved.
2. Date unit was purchased or first put into service.
3. Date of failure.
4. Nature of failure.