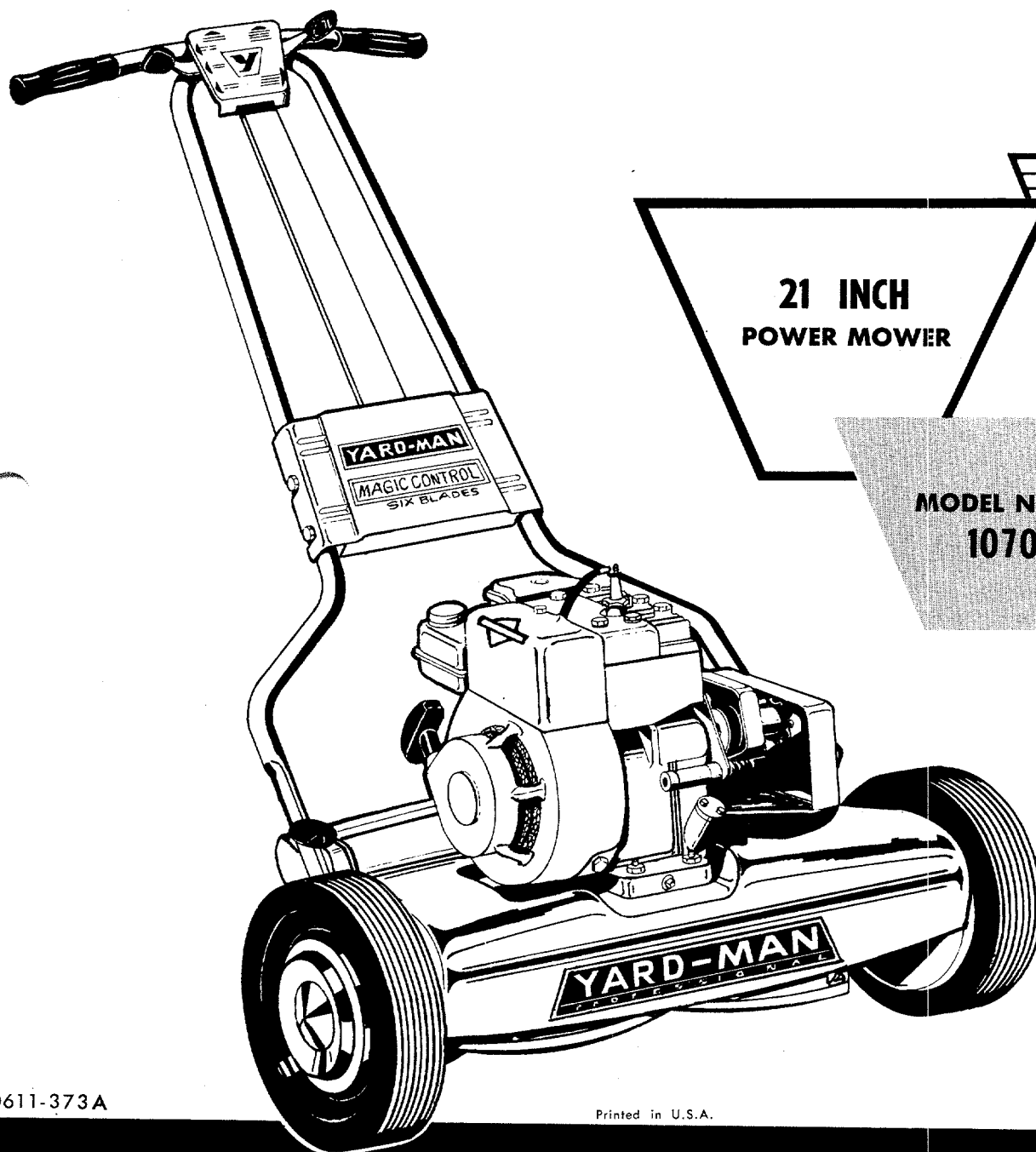


# OPERATING INSTRUCTIONS AND PARTS LIST

Stock 8D-351

Code 8-931



0611-373A

Printed in U.S.A.

**YARD-MAN**

Incorporated

1410 W. Ganson St., Jackson, Michigan

BUILDERS OF THE ORIGINAL SILENT YARD-MAN LAWN MOWER

# **IMPORTANT**

## **RULES FOR SAFE OPERATION**

1. Never place hands or feet under the machine
2. Do not attempt to clean, adjust or repair machine while engine is running.
3. Disconnect spark plug wire before cleaning, adjusting or repairing the machine.
4. Never leave machine running unattended.
5. Never run engine inside a building without opening all doors and windows.
6. Never fill the gasoline tank while the engine is hot, and wipe off any gasoline that might be spilled.
7. Only persons acquainted with the Rules of Safe Operation should be permitted to use mower.

No minor should operate mower unless properly supervised.

*Please read these operating instructions carefully before operating your mower and keep handy for future reference*

## BEFORE STARTING ENGINE

1. (Fig. 2) Remove oil fill plug. Place mower level and fill engine crankcase to top of oil fill plug with S.A.E. No 30W oil. Tilt mower to make sure oil flows completely into crankcase. Replace fill plug and tighten.
2. The air cleaner protects the engine against grit and dirt. CAUTION, an extremely dirty air cleaner element may cause engine to stall. SEE ENGINE INSTRUCTION MANUAL FOR PROPER AIR CLEANER MAINTENANCE.
3. Fill tank with good grade regular, clean fresh gasoline. DO NOT MIX OIL with gasoline.

FOR COMPLETE ENGINE INFORMATION READ ENGINE INSTRUCTION BOOKLET FURNISHED WITH YOUR MOWER BEFORE STARTING OR OPERATING.

## TO START ENGINE

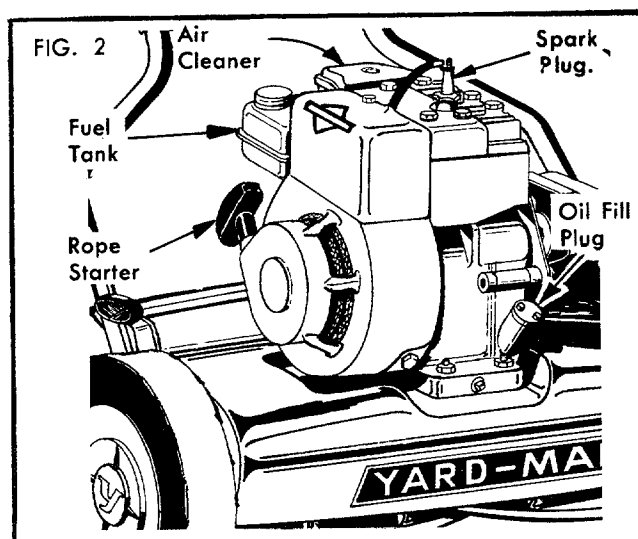
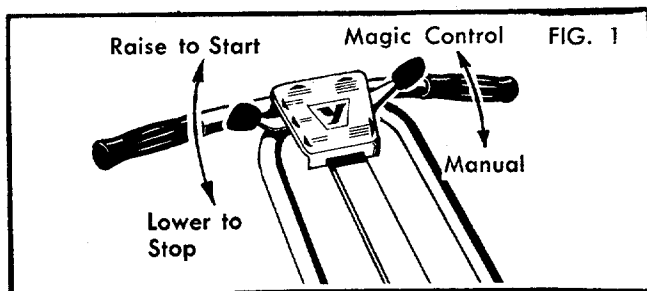
1. Move control lever to MAGIC CONTROL position with handle down.
2. Set throttle lever in choke position.
3. Pull starter rope with quick full stroke once. Move throttle lever to "FAST" position. Pull starter rope again.
4. When engine starts move throttle lever to "IDLE" position until engine warms up. Regulate engine speed with hand lever from "IDLE" to "FAST."

## BREAK-IN PERIOD

1. During first 10 hours of operation check frequently the following:
  - \* Oil level in engine crankcase.
  - \* Belt adjustment on engine to jackshaft drive. (Page 6)
  - \* Check all bolts, nuts and screws for tightness.

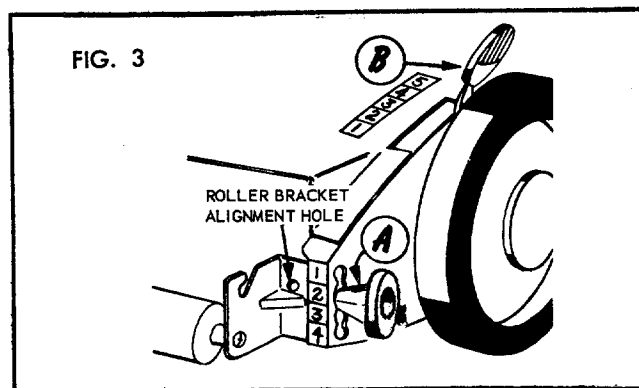
## OPERATING CONTROLS

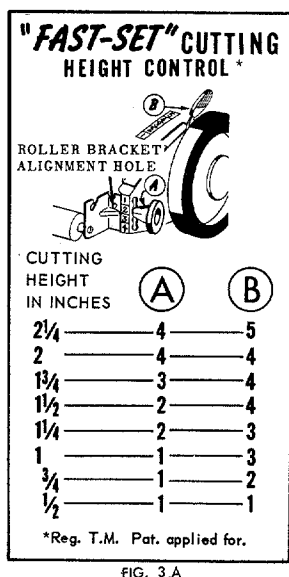
1. (Fig. 1) Set operating control lever in MAGIC CONTROL position. Raise handle to start----- lower to stop. For easy maneuverability.
2. Set operating control lever to "MANUAL" position for direct drive operation. Use when mowing large areas or trimming.
3. Throttle lever regulates choke, run, idle and stop.



## TO ADJUST HEIGHT OF CUT

1. Consult the chart located on underside of handle cover, the roller adjusting knobs (A) and wheel adjusting levers (B) must be in positions shown for desired cutting height. EXAMPLE: for 1 1/2" cutting height roller knob must be in No. 2 position, and wheel lever must be in No. 4 position. (Fig. 3 and Fig. 3A)
2. Place mower on hard, flat surface and tilt machine back on roller until wheels are off the ground. Move right hand wheel lever outward to disengage locating pin, then move lever forward or back until it is aligned with proper number on deck label. Release outward pressure on lever and be sure that locating pin seats properly in hole in end plate. Repeat this procedure on left hand side, position lever so that mower is level.
3. Tilt mower forward until roller is off the ground. Turn right hand roller knob counter clockwise 2 full turns and move knob up or down until alignment hole in roller bracket is in line with proper number on label at rear of end plate. (see illustration) Turn knob clockwise until tightened securely. Repeat this procedure for other side





## QUALITY OF CUT

Since a reel type mower does not create a lifting action like a rotary mower, it CANNOT lift up and cut tall blades of grass that are bent over. If cutting height is set too high, grass of this nature will not be in position to be drawn between the reel blades and cutter bar and in many cases will be pushed away by the revolving reel. Therefore, to obtain the utmost in performance and lawn appearance, cutting height ABOVE 1 1/2" IS NOT RECOMMENDED except where grass is upright and dense.

## SERVICE INSTRUCTIONS

ALWAYS REMOVE SPARK PLUG WIRE BEFORE MAKING ADJUSTMENTS—NEVER MAKE ANY ADJUSTMENTS WITH ENGINE RUNNING.

Check your mower frequently to make sure all parts are operating smoothly. Your mower left the factory properly adjusted and properly lubricated to assure you of a smooth clean cutting job. Keep it clean. The mower should be thoroughly cleaned and lubricated at the start of each mowing season for better operation and longer service life.

DO NOT use water to clean the mower—use a broom or brush to remove grass and dirt. When storing mower for any length of time, follow storage instructions in engine instruction booklet.

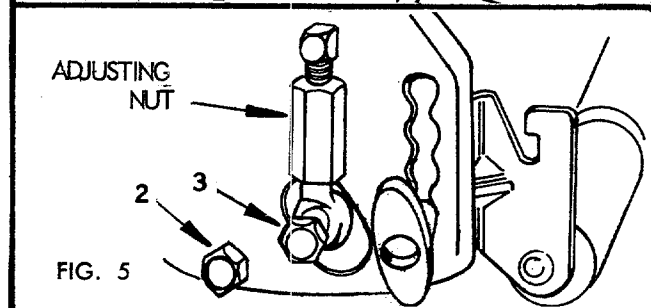
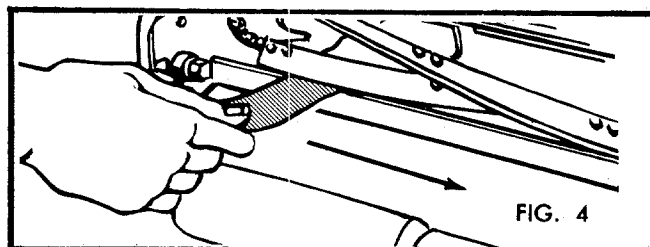
### CHECKING AND ADJUSTING CUTTER BAR CLEARANCE

When properly set, the cutter bar should almost contact the reel blades. Only on very fine grass should the reel blades touch the cutter bar, and then very lightly so that only a slight scraping noise is heard.

It's easy to check proper cutter bar clearance—just place a piece of newspaper about 2" wide and 6" long, between reel blades and cutter bar—See Step 2 below. Correct cutter bar clearance should pinch but not cut, the paper at both ends and the middle of the cutter bar. If it doesn't, adjust as follows:

### REEL AND CUTTER BAR PAPER TEST

1. Insert strip of newspaper between cutter bar and reel blades.
2. Turn reel slowly backwards. If the paper is held snugly by each blade then adjustment is correct.
3. Adjust cutter bar so that reel blades pinch paper without cutting it.



### CUTTER BAR ADJUSTMENT

(Fig. 4) Cutter Bar bolts (2 & 3) are tapered and extend beyond the side plate slightly. When these tapered bolts are tight any end play or looseness is eliminated. Be sure these bolts are tight before making adjustments.

#### TO TIGHTEN CUTTER BAR

Turn hex adjusting nut counterclockwise.

#### TO LOOSEN CUTTER BAR

Turn hex adjusting nut clockwise.

### SERVICE

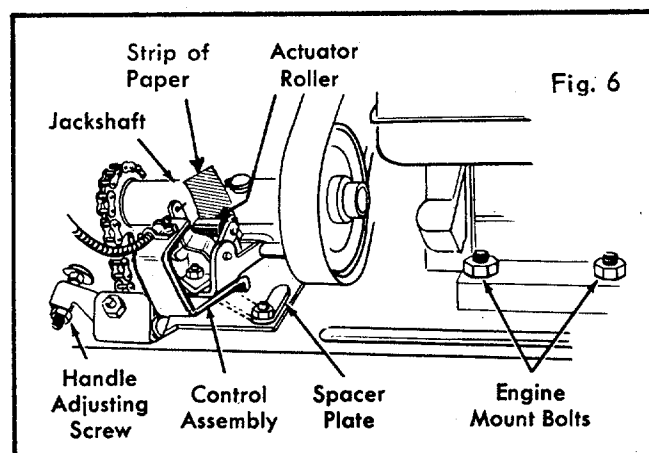
1. Sharpening is required when the mower will not cut satisfactorily without the reel blades wiping on the cutter bar.
2. Most lawn mower service shops are equipped with factory built service equipment to give your mower the same precision it had when it came from the factory.

#### NOTE:

When cutter bar is removed for sharpening, left hand pivot bolt (Item 2 fig. 5) must be turned counter clockwise to be removed. Right hand pivot bolt on right hand side of mower must be turned clockwise.

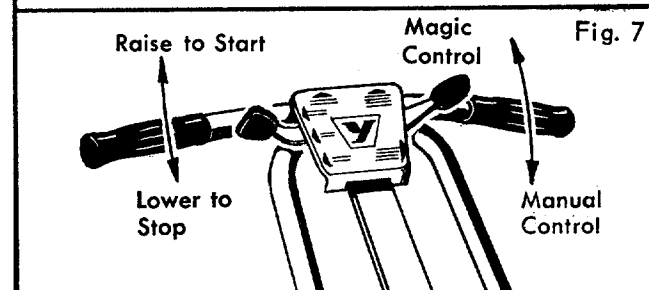
## TO ADJUST CHAIN DRIVE

1. (Fig. 6) (Fig. 7) Set hand control lever in MAGIC CONTROL and handle in stand-up position.
2. Loosen 4 engine mount bolts and pull engine back.
3. Loosen 4 control assembly bolts and move spacer plate under control assembly.
4. Pull the control assembly back to tighten chain. Allow 1/8 inch slack in chain. Tighten 3 control assembly bolts. Leave spacer plate nut loose.



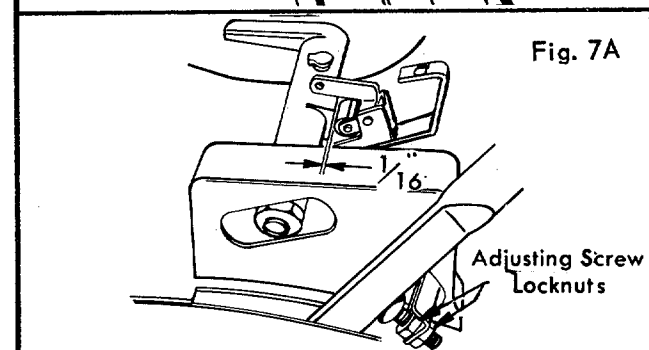
## TO ADJUST BELT DRIVE

1. Check procedure TO ADJUST CHAIN DRIVE.
2. Be sure engine mount bolts are loose and spacer plate is positioned beneath control assembly.
3. Handle must be in stand-up position and hand control lever in MAGIC-CONTROL position.
4. With strip of paper between jackshaft and actuator roller, hold control assembly down against spacer plate—then move engine forward until paper is just free. Retighten engine mount bolts.
5. Move spacer plate from under control assembly. Tighten spacer plate nut.



## TO ADJUST MAGIC-CONTROL ACTION

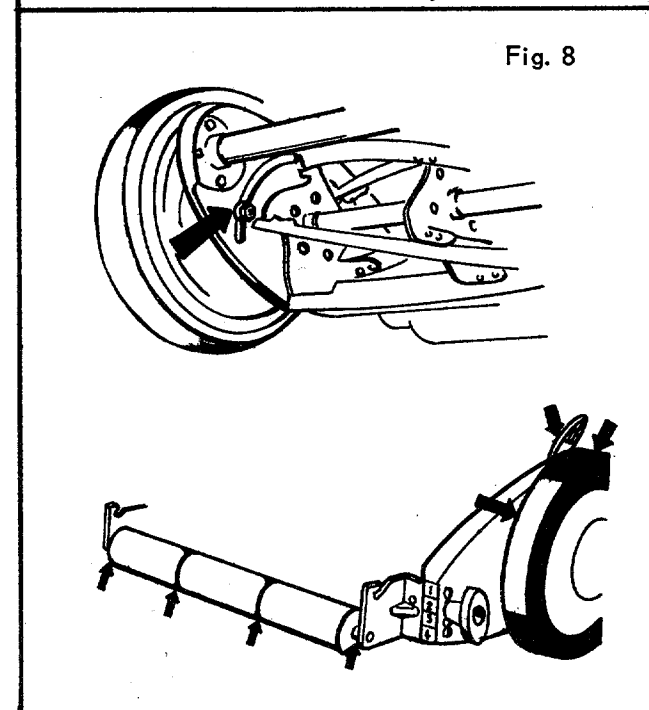
1. Place hand lever in MANUAL position (Fig. 7)
2. Lower handle to operating position.
3. Loosen adjusting screw locknuts. (Fig. 7A)
4. With handle down adjust screw so that Actuator Roller has 1/16 inch clearance between roller and jackshaft.
5. Retighten adjusting screw lock nut.



## LUBRICATION

1. Change engine oil (crankcase) after first 5 hours of operating. See engine operating instructions.
2. Check air cleaner frequently.
3. Reel bearings require no attention until mower is serviced.
4. Check jackshaft oiler cup frequently, oil at beginning of mowing season and as needed. Oil roller shaft once or twice a year or as needed.
5. Lightly lubricate with engine oil, points indicated on roller and between end plates and wheel dust covers. Periodic lubrication at these points, will insure smooth mechanical operation. (Fig. 8)

To insure continued easy operation of controls, oil outside of exposed cables for full length with engine oil as required.



## STAND-UP HANDLE

1. There's no storage problem with the Stand-Up Handle.
2. Move handle latch on the end-plate in and move handle to upright position.

To transport mower in car, remove controls and cables from handle. DO NOT KINK CABLES.

## STORAGE

Store your mower in a clean, dry place and keep clean to serve you well. If stored for a length of time, the engine should be drained of fuel. This will prevent the forming of gum deposits on essential parts in the carburetor fuel line and tank, which might affect the efficient operation of your engine when again used.

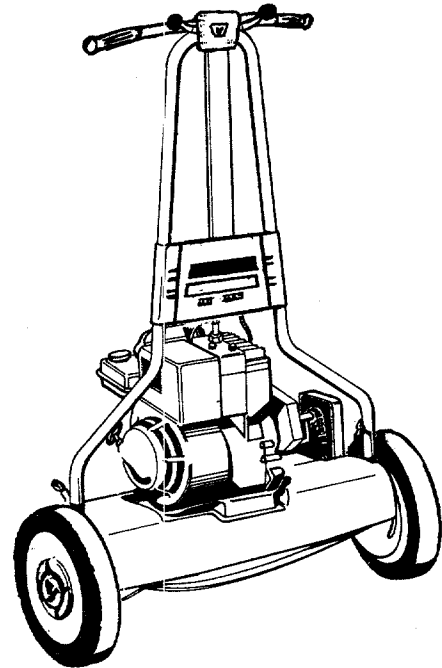


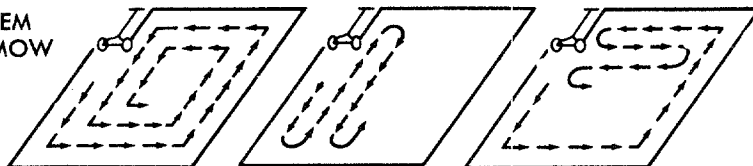
FIG. 10A

## OPERATING AND LAWN MOWING HINTS



1. Simplicity of control in this Power Reel mower makes mowing a pleasure. Raise the "Magic Handle" to start, lower to stop. Set the throttle level for your convenient walking speed.
2. For close trimming around flower beds, along walks and walls, set the handle control lever to "Manual" position. In manual control the reel turns as long as the engine runs. Trim by tilting mower back on roller to stop.

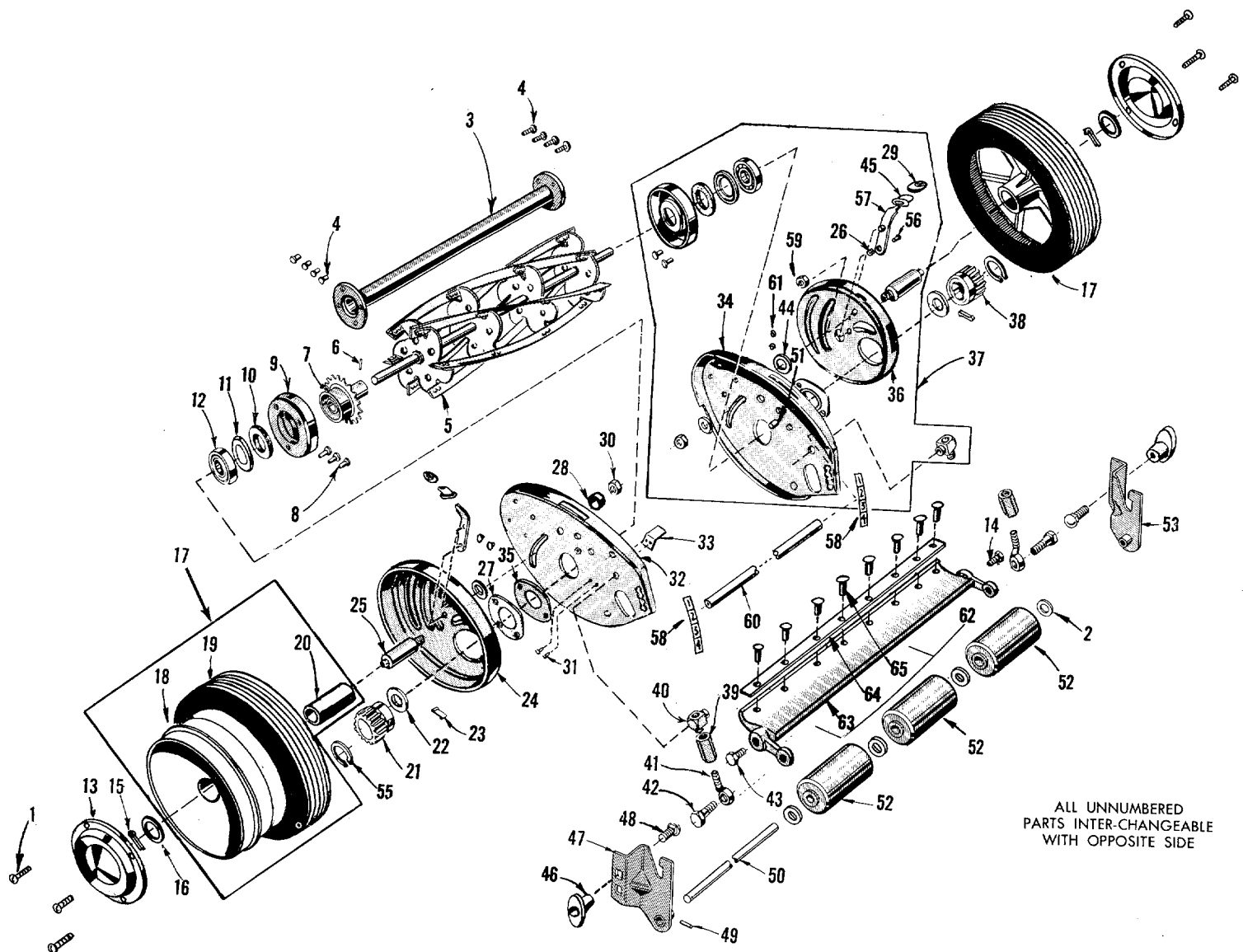
USE A SYSTEM  
WHEN YOU MOW



This way gets the edges—it's real fast and it's real work!

A pause at each end is more restful but it misses the edges.

COMBINE FOR  
BEST RESULTS



# HOW TO ORDER REPAIR PARTS FOR YOUR



## MODEL 1070-4 POWER MOWER

All parts listed herein may be ordered through YARD-MAN INCORPORATED  
WHEN ORDERING REPAIR PARTS, ALWAYS GIVE THE FOLLOWING INFORMATION AS  
SHOWN IN THIS LIST:

1. THE PART NUMBER.
2. THE PART NAME.
3. The MODEL NUMBER.
4. The NAME of item.

Your Mower is right hand (R.H.) or left hand (L.H.) as you push.

Do not use Key Numbers when ordering Repair Parts, always use Part Numbers.

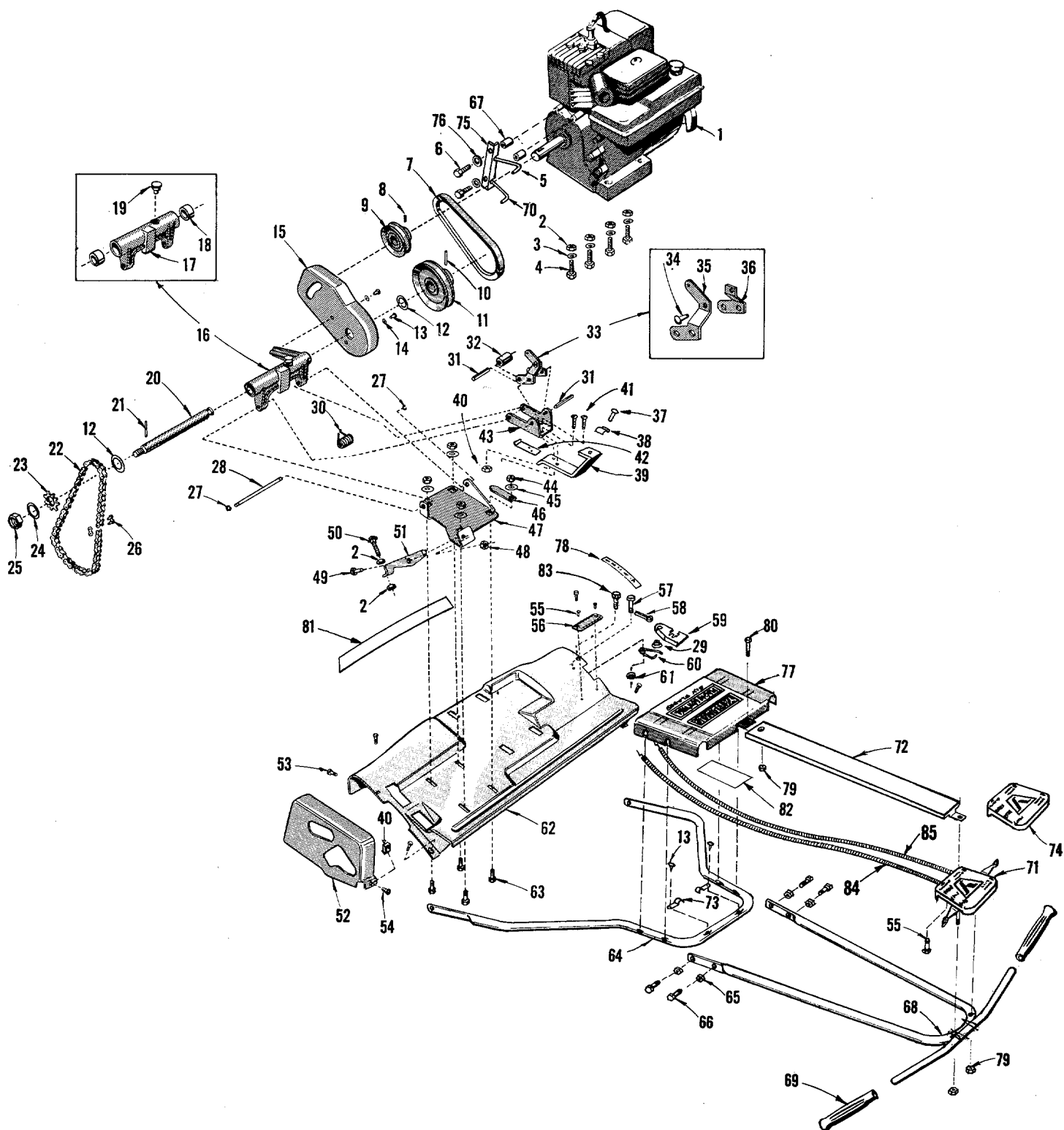
### PARTS LIST

Key No.	Part No.	Description	Key No.	Part No.	Description
1	1511-18	*Screw #10-32 x 5/8	34	1129-208-17	End Plate with Trunnions—R.H.
2	1540-59	Washer—Roller	35	1624-138	Spacer
3	1112-19-17	Spacer Tube Assembly 21"	36	1118-8-17	Gear Housing—R.H.
4	1530-6	Rivet	37	1129-210-17	End Plate Ass'y Complete—R.H.
5	2135-21-17	Reel Assembly 21"	37	1129-209-17	End Plate Ass'y Complete—L.H.
6	1548-5	Rollpin	38	1692-4	Pinion Gear—R.H.
7	2121-2-17	Sprocket, Anti-wind Cup & Hub Ass'y	39	1539-31	Nut
8	1530-20	*Rivet (3/8 Dia. x 1 1/2)	40	1156-6	Trunnion
9	1629-28	Retainer	41	1513-40	Bolt
10	104	Felt Washer	42	453	Screw
11	106	Felt Retainer	43	455	Screw Cutter Bar—R.H. Thd.
12	3	Bearing	44	1540-43	Washer
13	2674-26	Hub Cap	45	1622-50	Dust Cover
14	1509-86	Screw Cutter Bar L.H. Thd.	46	1643-23	Roller Adjust Knob
15	142	*Cotter Pin (1/8 x 5/8)	47	2132-44-17	Roller Bracket Assembly—L.H.
16	141	Washer	48	1529-25	Bolt (5/16-18 x 5/8)
17	1108-95-40	Wheel and Tire Assembly	49	1548-7	Rollpin
18	1110-30-40	Drive Wheel & Bearings Less Tire	50	1632-58	Roller Shaft—21"
19	2619-34	Tire	51	1645-37	Trunnion
20	1652-52	Bearing	52	1126-9	Roller Assembly—21"
21	1692-3	Pinion Gear—L.H.	53	2132-45-17	Roller Bracket Assembly—R.H.
22	109	Felt Washer	54	72	Wrench
23	323	Pawl	55	1650-21	Retaining Ring
24	1118-9-17	Gear Housing—L.H.	56	1509-38	Screw (#10-32 x 3/8 Hex Hd.)
25	1631-26	Axle	57	1155-17-41	Spring & Trunnion Assembly
26	1540-55	Washer	58	1616-119	Roller Adjust Label
27	1629-41	Retainer	59	1534-8	Nut (10/32 Gripco)
28	1657-19	Bushing	60	2624-112-17	Spacer-End Plate
29	2643-18	Knob Wheel Adjust	61	1657-23	Bushing—Nylon
30	1538-23	Nut	62	3134-23	Cutter Bar Assembly
31	1117	Screw (10-32 x 3/8 Sems)	63	3634-27	Cutter Bar Bracket
32	1129-207-17	End Plate with Trunnions—L.H.	64	2604-30	Cutter Bar Blade
33	1723-1	Scraper	65	1531-12	*Cutter Bar Rivet 3/8 x 3/16

For illustration—See Page 8

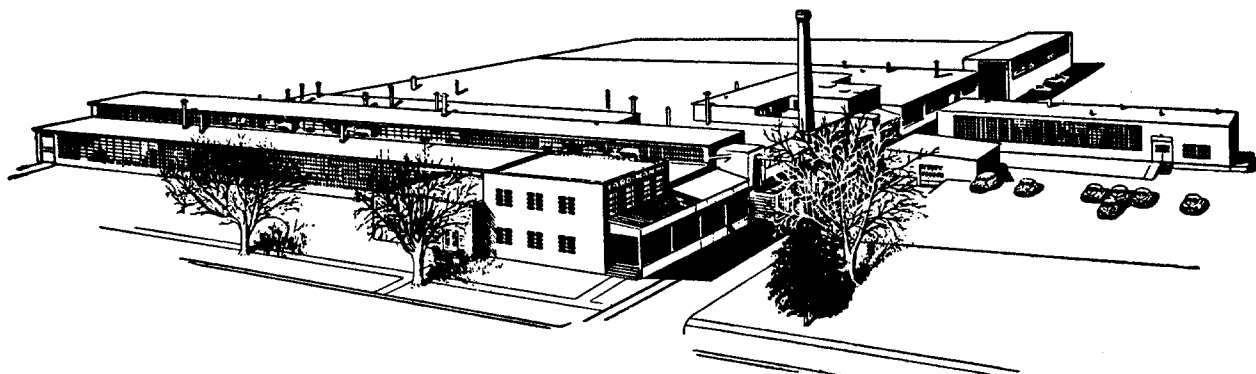
\*Standard Hardware Item—May be Purchased Locally





## PARTS LIST

Key No.	Part No.	Description	Key No.	Part No.	Description
1		Briggs & Stratton Engine Model 60102 Type 0136-01	43	1609-83-17	Bracket
2	70	*Nut (3/16-18 Hex)	44	67	*Nut (1/4-20 Hex)
3	1025	*Lock Washer (3/16)	45	1018	*Lockwasher (1/4)
4	1529-11	*Bolt (3/16-18 x 1 3/8 Carriage)	46	1624-50	Spacer
5	1724-7	Keeper-Belt upper—18"	47	3609-82-17	Bracket
5	1724-8	Keeper-Belt upper—21"	48	41-028	*Nut (3/16-24 Hex Lock Gripco)
6	1509-69	*Screw (1/4-20 x 1 3/4 Fillister Hd.)	49	1513-18	Bolt (3/16-24 Hex Shoulder Bolt)
7	1651-20	"V" Belt	50	1513-23	Bolt (3/16-18 x 1 5/8 Step)
8	1508-13	*Set Screw (3/16-24 x 1/32 Self Lock)	51	2705-6	Lever
9	1626-40-41	Pulley	52	3639-32-17	Guard
10	1548-11	Rollpin	53	1513-8	*Bolt (3/16-24 x 1/2 Sems. Hex Hd.)
11	2120-34-41	Pulley Assembly	54	117	*Screw (10-32 x 3/8 Phlps Hd. "sems")
12	1540-17	*Washer (5/8 x 1 1/8)	55	1511-26	*Screw (6 x 1/4 Rd. Hd. Self Tapping)
13	1511-25	Screw (10-32 x 1/2 Sems Thd. Cutting)	56	1605-278	Name Plate—21"
14	1540-55	Washer	57	1545-23	Clevis Pin
15	2639-30-41	Belt Guard	58	1547-4	Cotter Pin
16	2102-20-17	Jackshaft Housing, Bearings & Oiler Assembly	59	2627-21-17	Latch
17	3601-64-17	Jackshaft Housing	60	2642-51	Spring
18	1652-1	Bearing	61	1097	Washer
19	1691-2	Oiler	62	5690-10-17	Deck—21"
20	1632-26	Jackshaft	63	1529-15	Bolt (1/4-20 x 5/8)
21	1546-2	Pin	64	3712-40-41	Lower Handle Section—21"
22	1654-2	Chain	65	1538-8	Nut (1/4-20 Hex)
23	1638-16	Sprocket	66	1509-22	Bolt (1/4-20 x 1 3/8 Hex)
24	1036	Washer	67	1624-69	Spacer
25	1538-16	*Nut (3/16-20 Hex Jam Lock Gripco)	68	4117-35-41	Upper Handle Section
26	1113-13	Connector Link	69	1710-25	Handle Grip
27	1650-10	Retaining Ring	70	1724-10	Lower Belt Keeper—21"
28	1547-3	Pin	71	1129-206	Dual Throttle Control Ass'y Complete
29	1624-122	Spacer	72	2622-53-41	Throttle Control Cable Cover
30	1642-30-17	Spring	73	1694-19	Clamp Control Cable
31	1548-13	Rollpin	74	3500-208-17	Control Cover
32	1658-8	Roller	75	1606-48	Belt Keeper Bracket
33	1155-15-17	Roller Lever Assembly	76	1540-23	Washer
34	9	*Rivet 3/16 x 1 3/32	77	4500-204-17	Handle Cover
35	1705-17	Roller Lever—L.H.	78	1616-114	Label—Wheel Adjust
36	1705-10	Roller Lever—R.H.	79	1534-22	Nut (#10-24 Hex)
37	1117	*Screw (10-32 x 3/8 Ph. Rd. Hd. Thd. Cut Sems)	80	1501-21	Screw (#10-24 x 3/8)
38	1694-10	Clamp	81	2616-140	Yard-Man Label
39	2609-180-17	Control Bracket	82	1616-118	Label Adjustment Chart
40	1534-8	*Nut (10-32 Gripco)	83	1513-41	Bolt (3/16-24 x 3/4 Hex. Hd.)
41	41-054	*Screw (10-32 x 3/16 Rd. Hd. Sems)	84	0171-24	Clutch Cable Assembly
42	2642-52-17	Spring	85	0171-25	Throttle Cable Assembly



" You are cordially invited to visit  
our plant at any time."

**YARD-MAN** Incorporated 1410 W. Ganson St., Jackson, Michigan