

# operating manual *and* parts list

MODEL 1040-9

18-INCH POWER  
REEL MOWER



## YARD-MAN

1410 West Ganson Street — Jackson, Michigan 49202

# **IMPORTANT**

## **RULES FOR SAFE OPERATION**

Your Mower is a precision piece of power equipment. Engineering skill and experience have been combined to provide the ultimate in safety and efficiency. As with any type of power equipment, carelessness or error on the part of the operator can result in injury. Exercise extreme caution at all times.

1. **KNOW YOUR MACHINE** — Read the Owner's Manual carefully — learn how to operate your mower properly.
2. **MAKE SURE THE LAWN IS CLEAR** of sticks, stones, wire and other hazardous items before mowing. Such items are dangerous to both the mower and individuals in the vicinity of the mower.
3. **ADD FUEL BEFORE STARTING ENGINE**—never when engine is hot or running.
4. **KEEP AREA OF OPERATION CLEAR** of all persons, particularly small children and pets.
5. **DISENGAGE ALL BLADE AND DRIVE CLUTCHES** so equipped before starting engine.
6. **ALWAYS STOP ENGINE** and disconnect sparkplug wire before making cutting height adjustments.
7. **CHECK ALL NUTS, BOLTS, AND SCREWS** occasionally to be sure mower is in good operating condition.
8. **NEVER OPERATE EQUIPMENT IN WET GRASS.** Always be sure of your footing; keep a firm hold on the handle and walk, never run.
9. **ALWAYS CHECK FOR DAMAGE** if you should strike some foreign object with the blade while moving, stop your mower. Inspect for and repair any damage before restarting and operating the mower.
10. **STOP THE ENGINE** when you leave the equipment. Make certain the blades and all moving parts have stopped.
11. **WHEN MOWING A TERRACE**, slope or incline, mow lengthwise. **DO NOT** mow up or down. Be careful when turning to avoid slipping.

# PREPARING YOUR MOWER FOR USE

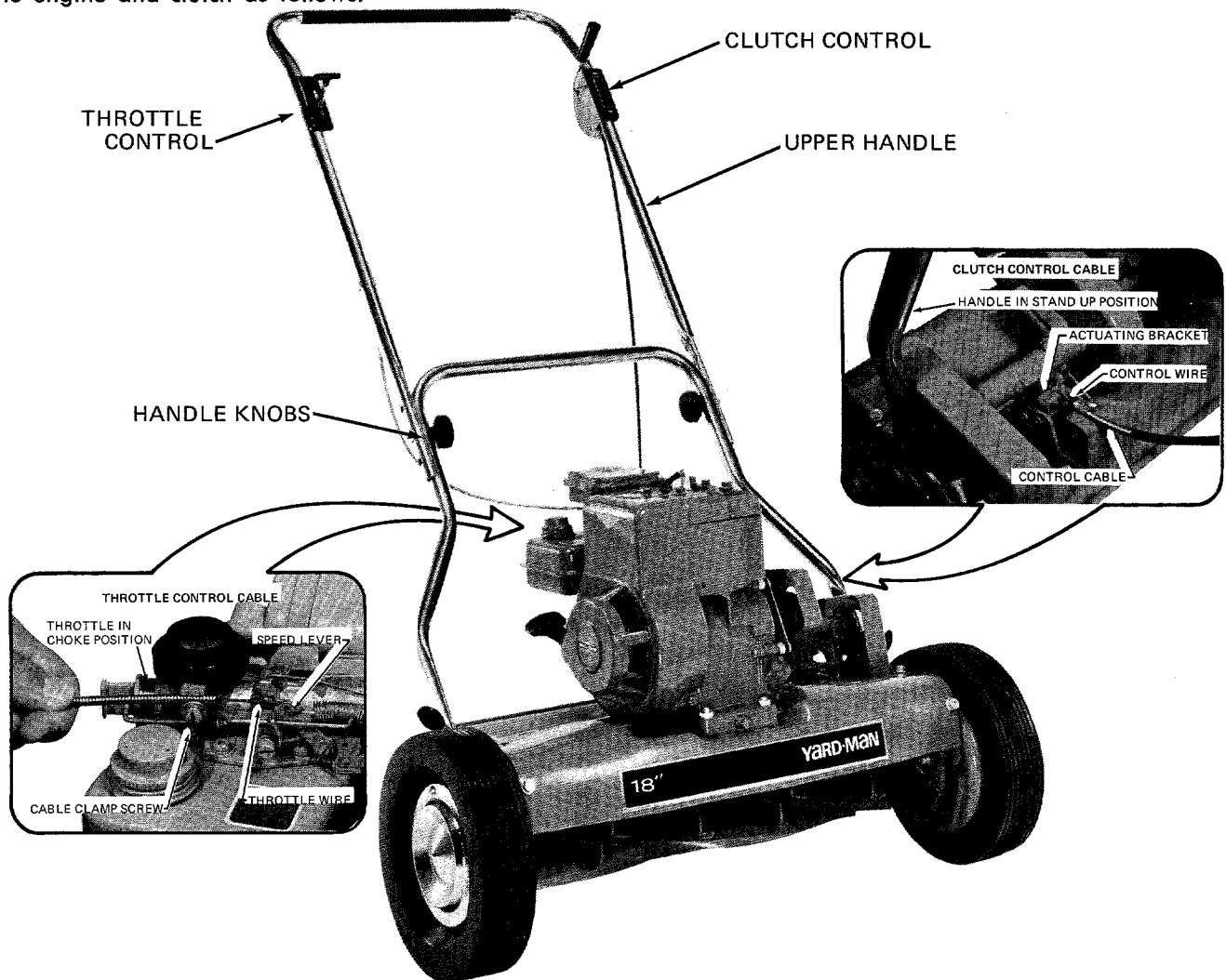
## SET-UP

Your mower has been packaged with the upper and lower handle assemblies shipped loose. The clutch and throttle controls are assembled to the upper handle, care should be taken not to kink the control wires during set up.

To assemble the handle to the chassis—place the lower handle through the opening in the left hand end plate and slip it over the 1/2 in. dia. trunnion. While holding the stand-up handle latch open—press the right hand side of the lower handle toward the center of the mower until it will fit into the opening in the end plate—place handle through the opening and slip it over the 1/2" dia. trunnion.

With the lower handle section in the operating position the upper handle can now be assembled to the lower section with the special bolts, washers and hand knobs provided.

After the upper and lower handle sections are assembled the throttle and clutch controls must be attached to the engine and clutch as follows:



**TO ATTACH THROTTLE CABLE:** Remove the air cleaner, with the handle mounted throttle in "CHOKE" position, insert the throttle wire into the top hole of the speed lever on carburetor as shown. Place the cable behind the cable clamp screw and washer, pull the throttle cable until the choke is in "Full Choke" position then tighten the clamp screw securely. For further adjustments follow the directions outlined on page 4 of your Engine Operating and Maintenance Instructions.

**TO ATTACH CLUTCH CABLE:** Place the handle in the stand-up position with the handle control lever in neutral. Insert the control wire through the hole in the top of the actuating bracket. After locating the cable under the retaining clip, pull the cable to the rear as far as the actuating bracket will allow, and tighten the cable clip mounting screw securely.

## BEFORE STARTING ENGINE

1. Remove oil fill plug (Fig. 2). Place mower level and fill engine crankcase to top of oil plug with S.A.E. No. 30 oil. Tilt mower to make sure oil flows completely into crankcase. Replace fill plug and tighten.
2. The air cleaner protects the engine against grit and dirt. CAUTION, an extremely dirty air cleaner element may cause engine to stall.

SEE ENGINE INSTRUCTION MANUAL FOR PROPER AIR CLEANER MAINTENANCE.

3. Fill tank with good grade regular, clean fresh gasoline. DO NOT MIX OIL with gasoline.

FOR COMPLETE ENGINE INFORMATION READ ENGINE INSTRUCTION BOOKLET FURNISHED WITH YOUR MOWER BEFORE STARTING OR OPERATING.

## TO START ENGINE

1. Place clutch control lever in NEUTRAL position before starting engine.
2. Set throttle control in CHOKE position.
3. Pull starter rope with a smooth, quick full stroke once. Move throttle lever to FAST position. Pull starter rope again.
4. When the engine starts move the throttle lever to SLOW (Idle) position until the engine warms up.

## OPERATING CONTROLS

Clutch Lever Control—Move the clutch lever to forward position for direct drive operation. Move rearward (Neutral) to stop.

Magic Handle Control—Move clutch lever to Magic Control position (Neutral). To propel mower forward, raise the handle—To stop the mower, lower the handle.

Adjust throttle for the most comfortable walking speeds.

## BREAK-IN PERIOD

1. During first 10 hours of operation check frequently the following:
  - \* Oil level in engine crankcase.
  - \* Belt adjustment on engine to jackshaft drive. (Page 6)
  - \* Check all bolts, nuts and screws for tightness.

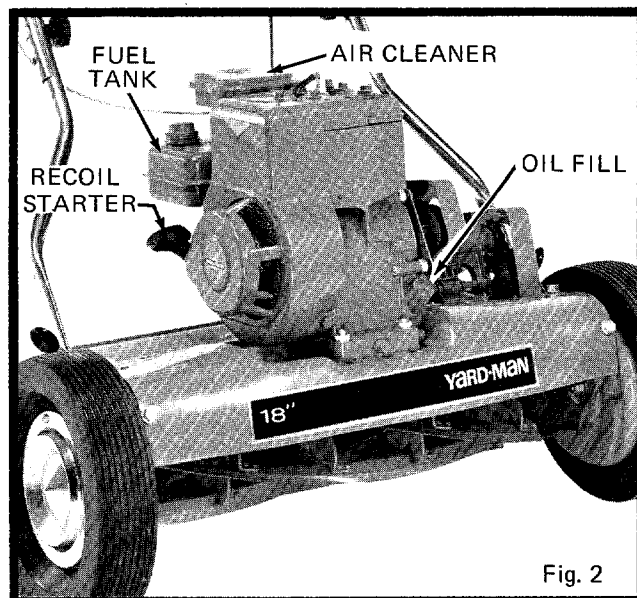


Fig. 2

## TO ADJUST HEIGHT OF CUT

1. Consult the chart located below. The roller adjusting knobs (A) and wheel adjusting levers (B) must be in the positions shown for desired cutting height. EXAMPLE: For 1-1/2" cutting height, the roller knob must be in No. 2 position and the wheel adjust lever must be in No. 4 position.
2. Place the mower on a hard flat surface. Tilt mower back on the roller until wheels are off the surface. Move right hand wheel lever outward to disengage the locating pin, then move lever forward or back until it is aligned with the proper number on the deck label. Release outward pressure on lever, make sure the locating pin seats securely in the adjustment hole in the end plate.
3. Tilt m o w e r forward until roller is off the ground. Turn right hand roller knob counter clockwise 2 full turns and move knob up or down until alignment hole in roller bracket is in line with proper number on label at rear of end plate. (see illustration) Turn knob clockwise until tightened securely. Repeat this procedure for other side.

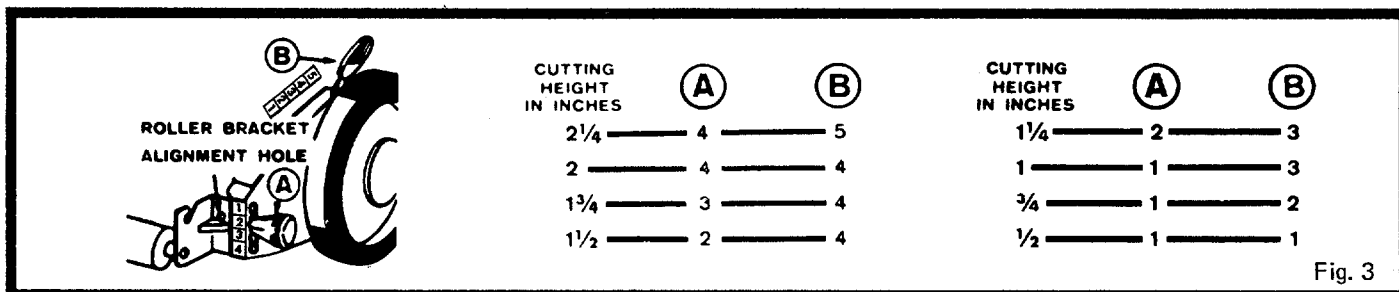


Fig. 3

## QUALITY OF CUT

Since a reel type mower does not create a lifting action like a rotary mower, it CANNOT lift up and cut tall blades of grass that are bent over. If cutting height is set too high, grass of this nature will not be in position to be drawn between the reel blades and cutter bar and in many cases will be pushed away by the revolving reel. Therefore, to obtain the utmost in performance and lawn appearance, cutting height ABOVE 1 5/8" IS NOT RECOMMENDED except where grass is upright and dense.

## SERVICE INSTRUCTIONS

ALWAYS REMOVE SPARK PLUG WIRE BEFORE MAKING ADJUSTMENTS—NEVER MAKE ANY ADJUSTMENTS WITH ENGINE RUNNING.

Check your mower frequently to make sure all parts are operating smoothly. Your mower left the factory properly adjusted and properly lubricated to assure you of a smooth clean cutting job. Keep it clean. The mower should be thoroughly cleaned and lubricated at the start of each mowing season for better operation and longer service life.

DO NOT use water to clean the mower—use a broom or brush to remove grass and dirt. When storing mower for any length of time, follow storage instructions in engine instruction booklet.

### CHECKING AND ADJUSTING CUTTER BAR CLEARANCE

When properly set, the cutter bar should almost contact the reel blades. Only on very fine grass should the reel blades touch the cutter bar, and then very lightly so that only a slight scraping noise is heard.

It's easy to check proper cutter bar clearance—just place a piece of newspaper about 2" wide and 6" long, between reel blades and cutter bar—See Step 2 below. Correct cutter bar clearance should pinch but not cut, the paper at both ends and the middle of the cutter bar. If it doesn't, adjust as follows:

## CUTTER BAR ADJUSTMENT

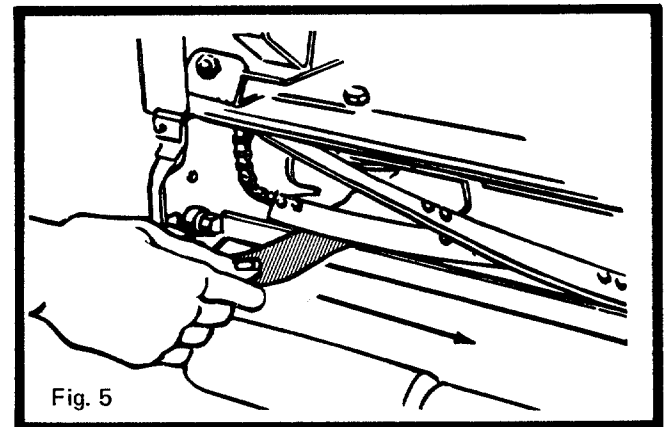
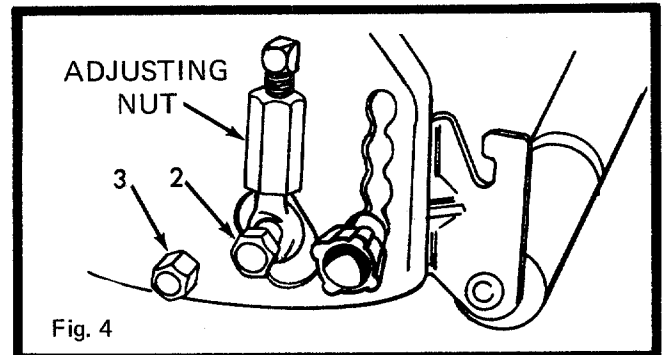
(Fig. 4) Cutter Bar bolts (2 & 3) are tapered and extend beyond the side plate slightly. When these tapered bolts are tight any end play or looseness is eliminated. Be sure these bolts are tight before making adjustments.

### TO TIGHTEN CUTTER BAR

Turn hex adjusting nut counterclockwise.

### TO LOOSEN CUTTER BAR

Turn hex adjusting nut clockwise.



## REEL AND CUTTER BAR PAPER TEST

1. Insert strip of newspaper between cutter bar and reel blades.
2. Turn reel slowly backwards. If the paper is held snugly by each blade then adjustment is correct.
3. Adjust cutter bar so that reel blades pinch paper without cutting it.

## SERVICE

1. Sharpening is required when the mower will not cut satisfactorily without the reel blades wiping on the cutter bar.

### NOTE:

When cutter bar is removed for sharpening, left hand pivot bolt (Item 2 fig. 4) must be turned counterclockwise to be removed. Right hand pivot bolt on right hand side of mower must be turned clockwise.

## TO ADJUST CHAIN DRIVE

1. Set hand control lever in **MAGIC CONTROL** position (Neutral) and the handle in stand-up position.
2. Loosen 4 engine mounting bolts and pull engine back.
3. Loosen 4 control assembly bolts and move spacer plate under control assembly.
4. Pull the control assembly back to tighten chain. Leave enough slack to allow the chain to be deflected approx.  $1/8$  to  $3/16$  inch. Tighten 3 mounting nuts securely leaving the spacer plate nut loose.

## TO ADJUST BELT DRIVE

1. Be sure the chain is properly adjusted as outlined above.
2. Be sure engine mount bolts are **l o o s e** and spacer plate is positioned beneath control assembly.
3. Handle must be in stand-up position and hand control lever in **MAGIC-CONTROL** position.
4. With strip of paper between jackshaft and actuator roller, hold control assembly down against spacer plate—then move engine forward until paper is just free. Retighten engine mount bolts.
5. Move space plate from under c o n t r o l assembly. Tighten spacer plate nut.

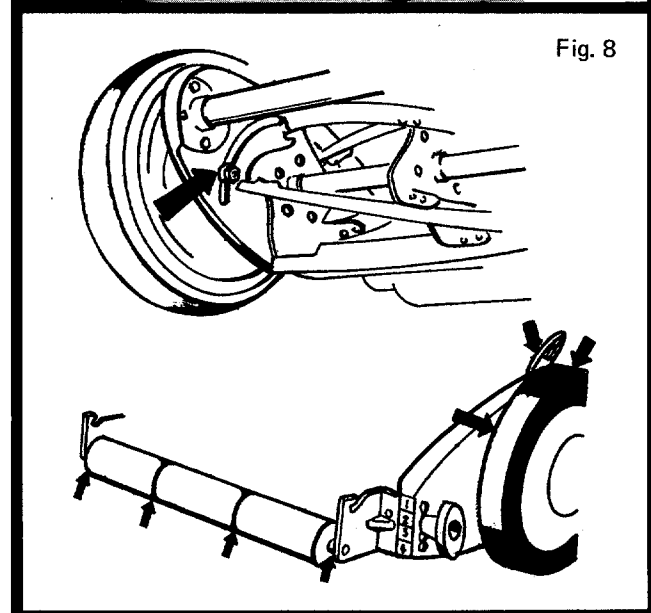
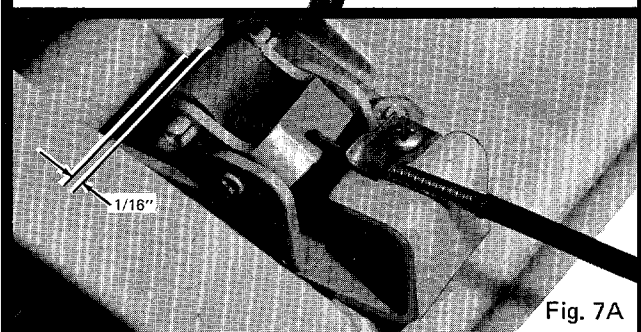
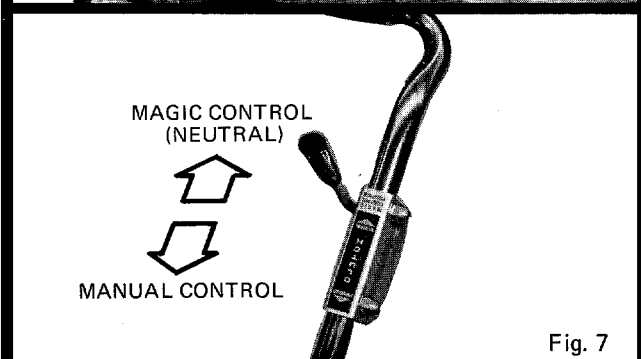
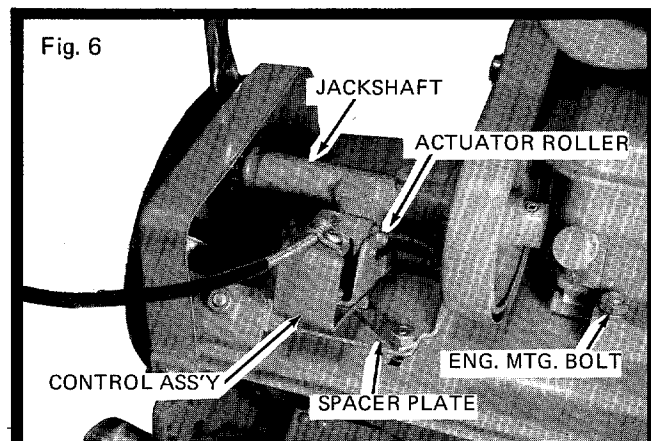
## TO ADJUST MAGIC-CONTROL ACTION

1. Place hand lever in **MANUAL** position (Fig. 7)
2. Lower handle to operating position.
3. Loosen adjusting screw locknuts. (Fig. 7A)
4. With handle down adjust s c r e w so that Actuator Roller has  $1/16$  inch clearance between roller and jackshaft.
5. Retighten adjusting screw lock nut.

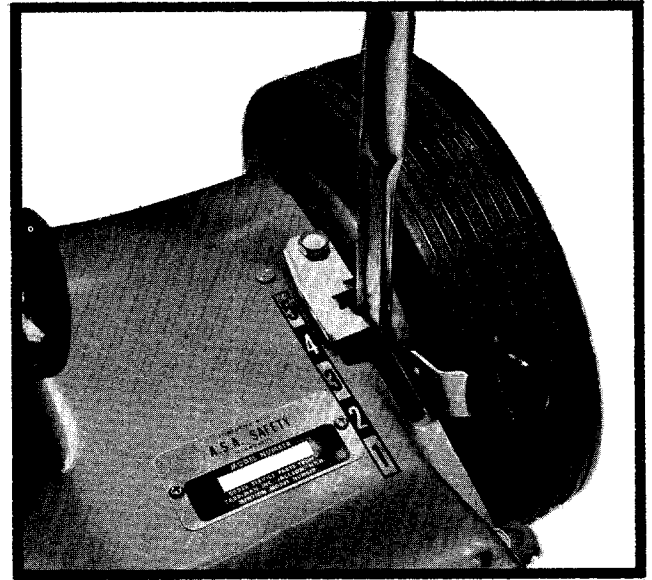
## LUBRICATION

1. Change engine oil (crankcase) after first 5 hours of operating. See engine operating instructions.
2. Check air cleaner frequently.
3. Reel bearings require no attention until m o w e r is serviced.
4. Check jackshaft oiler cup frequently, oil at beginning of mowing season and as needed. Oil roller shaft once or twice a year or as needed.
5. Lightly lubricate with engine oil, points indicated on roller and between end plates and wheel dust covers. Periodic lubrication at these points will insure smooth mechanical operation. (Fig. 8)

To insure continued easy operation of controls, oil outside of exposed cables for full length with engine oil as required.

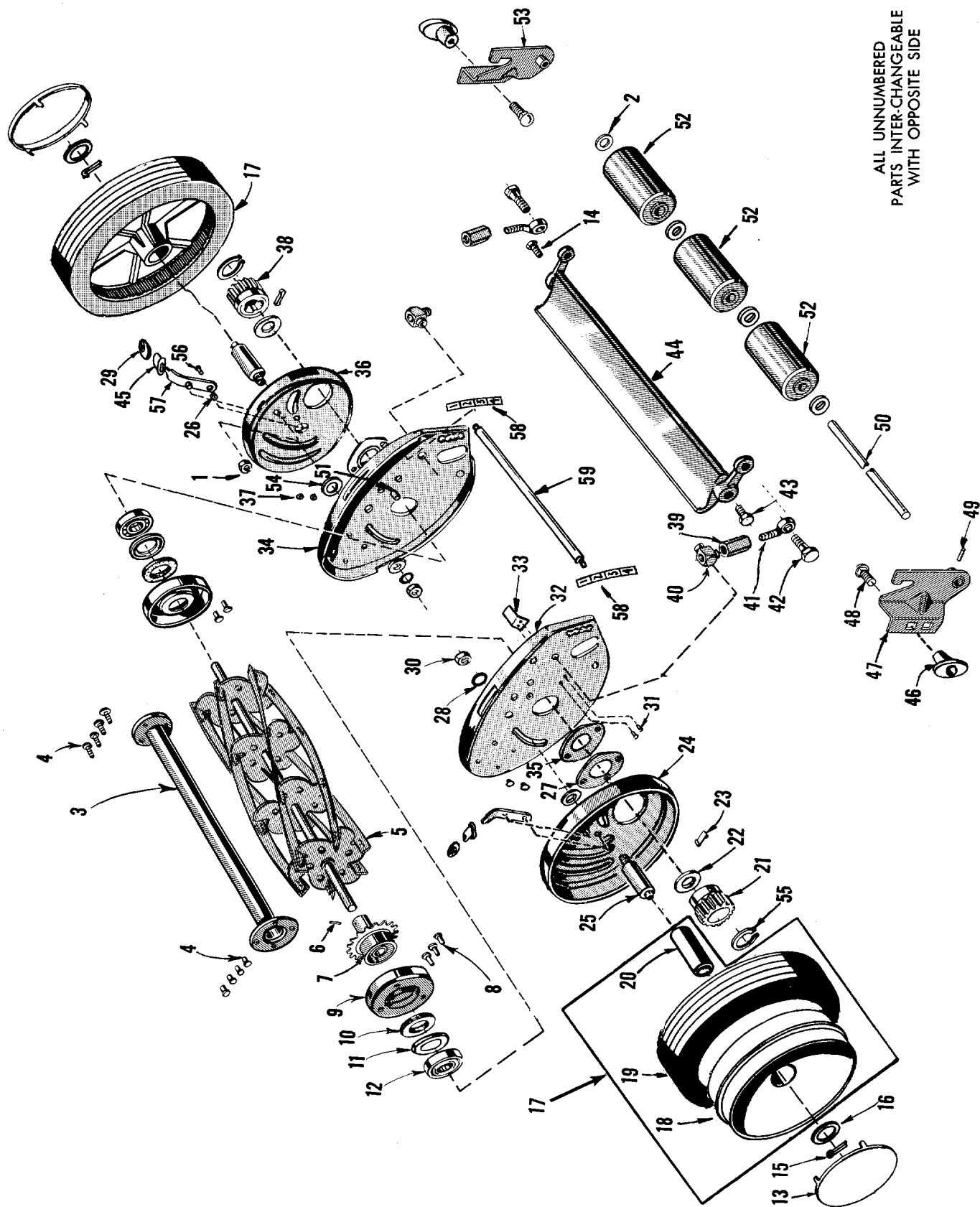


1. There's no storage problem with the stand-up handle.
2. Move handle latch on the end plate in and move handle to upright position. To transport mower in car, remove handle from chassis for more convenient handling. **CAUTION:** Always remove spark-plug wire before attempting to lift the mower.



Store your mower in a clean, dry place and keep clean to serve you well. If stored for a length of time, the engine should be drained of fuel. This will prevent the forming of gum deposits on essential parts in the carburetor fuel line and tank, which might affect the efficient operation of your engine when again used.

[illegible]





# PARTS LIST

## MODEL 1040-9

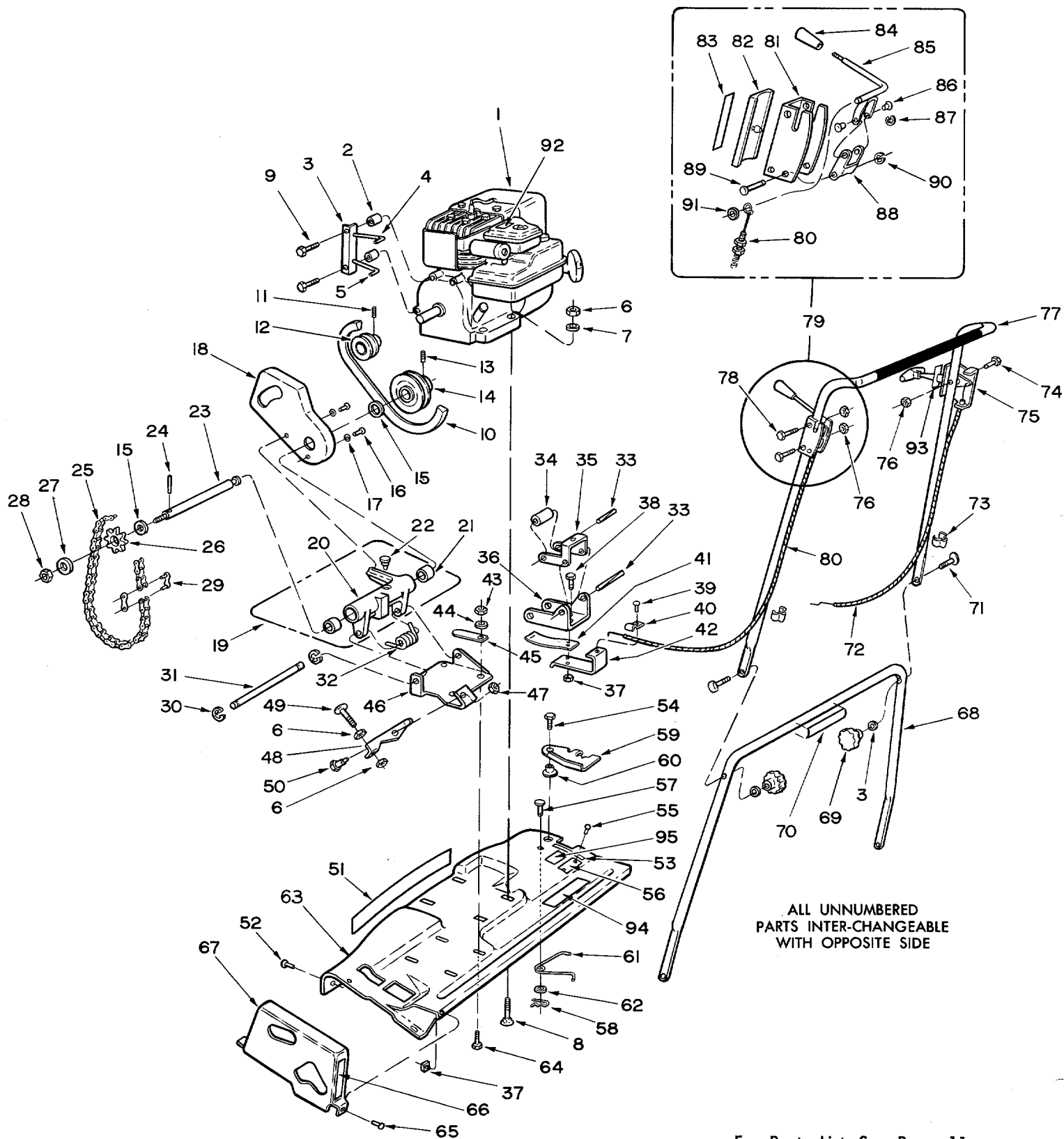
When ordering parts listed as L.H. or R.H.—determine the left or right hand side of your mower by standing behind the unit as you mow.

**Do not use Reference Numbers when ordering Repair Parts, always use Part Numbers.**

REF. NO.	PART NO.	NAME OF PART	REF. NO.	PART NO.	NAME OF PART
1	1534-8	*Nut (10-32 Gripco) .....	29	2643-18	Knob—Wheel Adjust .....
2	1540-59	Washer—Roller .....	30	41-028	Nut .....
3	1112-18-55	Spacer Tube Assembly 18" .....	31	1117	*Screw (10-32 x 3/8 Sems) .....
4	1530-6	*Rivet (3/16 x 3/8) .....	32	1129-139-55	End Plate with Trunnions—L.H. ....
5	2135-20-55	Reel Assembly .....	33	1723-1	Scraper .....
6	1548-5	Rollpin .....	34	1129-138-55	End Plate with Trunnions—R.H. ....
7	2121-2-55	Sprocket, Anti-wind Cup & Hub Ass'y .....	35	1624-138	Spacer .....
8	1530-20	*Rivet (3/16 x 13/32) .....	36	1118-8-55	Gear Housing—R.H. ....
9	1629-28	Retainer .....	37	1657-23	Nylon Bushing .....
10	104	Felt Washer .....	38	428	Pinion Gear .....
11	106	Felt Retainer .....	39	1539-31	Nut .....
12	3	Bearing .....	40	1156-6	Trunnion .....
13	2674-33-55	Hub Cap .....	41	1513-40	Bolt .....
14	1509-86	Screw Cutter Bar L. H. Thd. ....	42	453	Screw .....
15	142	*Cotter Pin (1/8 x 3/8) .....	43	455	Screw Cutter Bar—R.H. Thd. ....
16	141	Washer .....	44	2134-11-55	Cutter Bar Assembly—18" .....
17	1108-80-41	Wheel and Tire Assembly .....	45	1622-50	Dust Cover .....
18	1110-27-41	Drive Wheel & Bearings Less Tire .....	46	1643-23	Roller Adjust Knob .....
19	2619-25	Tire .....	47	2132-12-55	Roller Bracket Assembly—L.H. ....
20	1652-52	Bearing .....	48	1529-25	*Bolt (5/16-18 x 3/8) .....
21	425	Pinion Gear .....	49	1548-7	Rollpin .....
22	109	Felt Washer .....	50	1632-57	Roller Shaft .....
23	323	Pawl .....	51	10	Trunnion .....
24	1118-9-55	Gear Housing—L.H. ....	52	1658-6	Roller .....
25	1631-26	Axle .....	53	2132-11-55	Roller Bracket Assembly—R.H. ....
26	1540-55	Washer .....	54	1540-43	Washer—Special .....
27	1629-41	Retainer .....	55	1650-21	Retaining Ring .....
28	1657-19	Bushing .....	56	1509-38	*Screw (#10-32 x 3/8 Hex Hd.) .....
			57	1155-14-55	Spring & Trunnion Assembly .....
			58	1616-119	Roller Adjust Label .....
			59	2624-113-55	Spacer—End Plate .....

For Illustration—See Page 8

\*Standard Hardware Item—Purchase Locally.



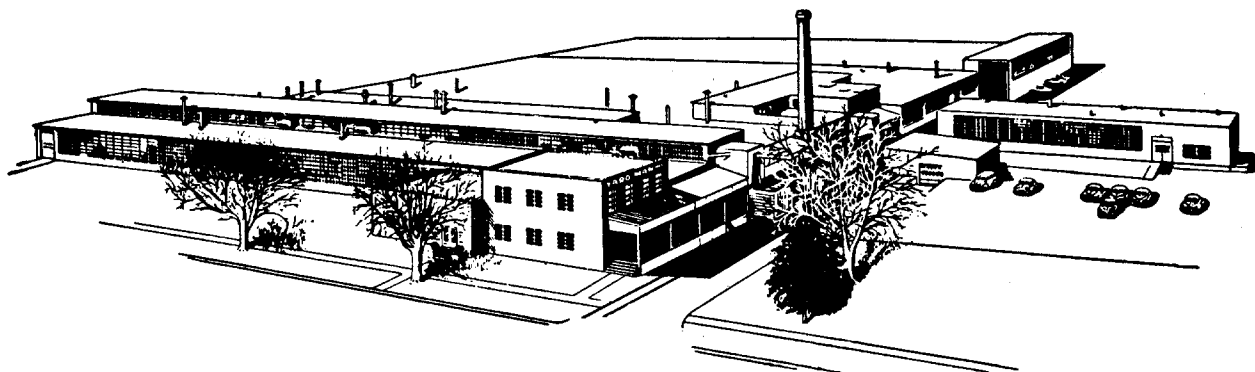
For Parts List—See Page 11

# **PARTS LIST** **MODEL 1040-9**

When ordering parts listed as L.H. or R.H.—determine the left or right hand side of your mower by standing behind the unit as you mow.

REF. NO.	PART NO.	PART NAME	REF. NO.	PART NO.	PART NAME
1		Ass'y—Engine B & S Model 60102	48	2705-6	Lever .....
		Type 0258-01 .....	49	1513-23	*Bolt (5/16-18 x 1 $\frac{1}{2}$ Step) .....
2	1624-69	Spacer .....	50	1513-18	*Bolt (5/16-24 Hex Shoulder) .....
3	1606-48	Bracket—Belt Keeper .....	51	2616-456	Label—Deck .....
4	1724-7	Belt Keeper (Upper) .....	52	1513-8	*Bolt (5/16-24 x $\frac{1}{2}$ Hex Sems) .....
5	1724-9	Belt Keeper (Lower) .....	53	1616-114	Label—Wheel Adjust .....
6	70	*Nut (5/16-18 Hex) .....	54	1513-41	*Bolt (5/16-24 x $\frac{3}{4}$ Hex Head) .....
7	1025	*Lockwasher (5/16) .....	55	1020	*Screw (6 x $\frac{1}{4}$ Rd. Head) .....
8	1529-11	*Bolt (5/16-18 x 1 $\frac{3}{8}$ Carriage) .....	56	1605-580	Name Plate .....
9	1509-69	*Screw ( $\frac{1}{4}$ -20 x 1 $\frac{3}{4}$ Fillister Head) ..	57	1545-23	Clevis Pin .....
10	1651-20	"V" Belt .....	58	1547-4	Cotter Pin .....
11	1508-13	*Set Screw (5/16-24 x 7/32) .....	59	2627-21	Latch .....
12	1626-40-55	Pulley .....	60	1624-122	Bushing .....
13	1548-11	Rollpin .....	61	2642-51	Spring .....
14	2120-34-55	Assembly—Pulley .....	62	1097	*Washer .....
15	1540-17	*Washer (5/8 x 5/16) .....	63	5690-9-55	Deck .....
16	1511-9	Screw (10-32 x $\frac{1}{2}$ Ph. Hd.) .....	64	1529-15	Bolt ( $\frac{1}{4}$ -20 x $\frac{5}{8}$ ) .....
17	1540-55	Washer .....	65	117	*Screw (10-32 x $\frac{3}{8}$ Ph. Hd.) .....
18	2639-30-55	Belt Guard .....	66	1616-441	Label—(Neutral-Drive) .....
19	2102-20-55	Ass'y—Jack Shaft Hsg. & Bearings	67	3639-32-55	Guard—Chain .....
20	3601-64-55	Jackshaft Housing .....	68	3712-135-01	Handle—Lower .....
21	1652-1	Bearing .....	69	1643-47	Knob—Handle .....
22	1691-2	Oiler .....	70	1616-442	Label—Lower Handle .....
23	1632-26	Jackshaft .....	71	1513-103	Bolt (5/16-18 x 1 $\frac{3}{4}$ Special) .....
24	1546-2	Pin .....	72	0171-33	Throttle Cable .....
25	1654-2	Chain .....	73	1689-5	Clip .....
26	1638-16	Sprocket .....	74	1501-31	Bolt ( $\frac{1}{4}$ -20 x 1 $\frac{1}{2}$ Rd. Hd.) .....
27	1036	Washer .....	75	2142-63	Ass'y—Throttle Control .....
28	1538-16	*Nut (7/16-24 Hex Jam) .....	76	1537-3	Nut ( $\frac{1}{4}$ -20 Acorn) .....
29	1113-13	Connector Link .....	77	0177-99-01	Ass'y—Upper Handle .....
30	1650-10	Retaining Ring .....	78	1501-32	Bolt ( $\frac{1}{4}$ -20 x 1 $\frac{1}{8}$ Rd. Hd.) .....
31	1547-3	Pin .....	79	2142-64	Ass'y—Clutch Control .....
32	1642-30-55	Spring .....	80	2188-66	Ass'y—Control Wire & Cable .....
33	1548-13	Rollpin .....	81	2622-143	Cover—Lower .....
34	1658-8	Roller .....	82	1622-144	Cover—Upper .....
35	1609-536-55	Bracket .....	83	1616-567	Label—Upper Cover .....
36	1609-83-55	Bracket .....	84	1643-49	Knob—Clutch Control .....
37	1534-8	*Nut (10-32 Hex Lock) .....	85	1155-35	Ass'y—Lever .....
38	41-054	*Screw (10-32 x 9/16 Rd. Hd.) .....	86	1547-53	Pin—Special (3/16 x .21) .....
39	1117	*Screw (10-32 x $\frac{3}{8}$ Ph. Hd.) .....	87	1650-53	Retaining Ring .....
40	1694-10	Clamp—Conduit .....	88	1609-532	Bracket .....
41	2642-52-55	Spring .....	89	1547-54	Pin—Special ( $\frac{1}{4}$ x 1.15) .....
42	1609-537-55	Control Bracket .....	90	1650-37	Retaining Ring .....
43	67	*Nut ( $\frac{1}{4}$ -20 Hex) .....	91	151	Washer (5/16 x $\frac{5}{8}$ x 1/16) .....
44	1018	*Lockwasher ( $\frac{1}{4}$ Split) .....	92	1616-449	Label—"Caution" .....
45	1624-50	Spacer .....	93	1616-527	Label—Throttle Control .....
46	3609-82-55	Bracket .....	94	1616-568	Label—Magic Handle .....
47	41-028	*Nut (5/16-24 Hex Lock) .....	95	1616-111	Label—"OPEI" .....

\*Standard Hardware Item—Purchase Locally



## WARRANTY

We guarantee all parts against defects in material and workmanship for a period of one (1) year from the date of purchase when used for residential. 90 days for commercial.

We agree to repair or replace without charge to the original Purchaser, including labor, any part or parts upon examination by a Yard-Man Authorized Dealer to be defective within the guarantee period except the engine which is warranted separately by the manufacturer. **All transportation charges for replacement under this guarantee must be paid by the Purchaser.**

This guarantee will not apply to a unit which has been subjected to misuse, negligence, accident or to a unit which has been altered in any way.

# YARD-MAN

Yard-Man reserves the right to make engineering changes without prior notification or responsibility to the Purchaser.