

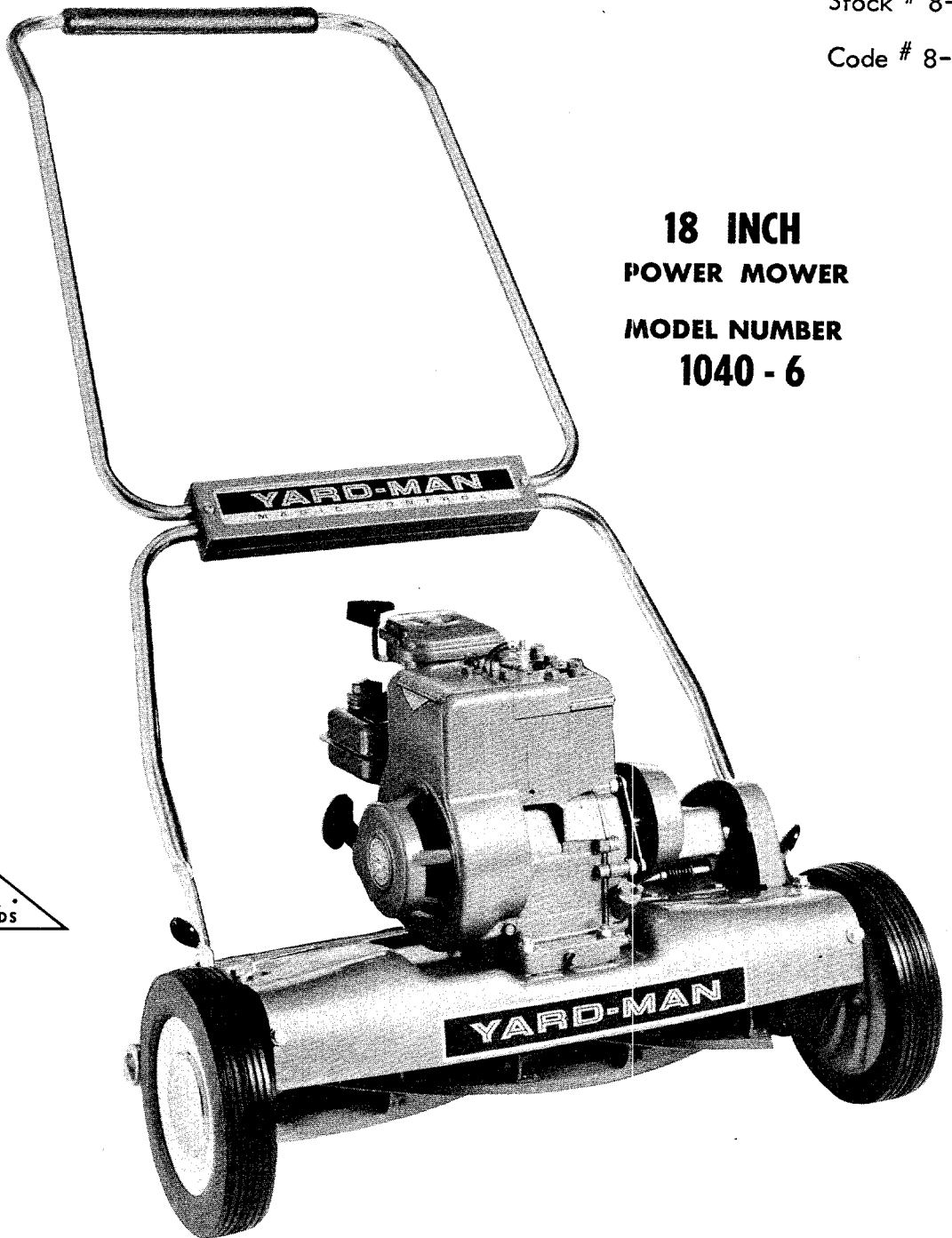
# OWNERS OPERATING MANUAL

## and PARTS LIST

Stock # 8-D -349

Code # 8-930

**18 INCH  
POWER MOWER  
MODEL NUMBER  
1040 - 6**



0611-479

PRINTED IN U.S.A.

# YARD-MAN INC

Jackson Michigan

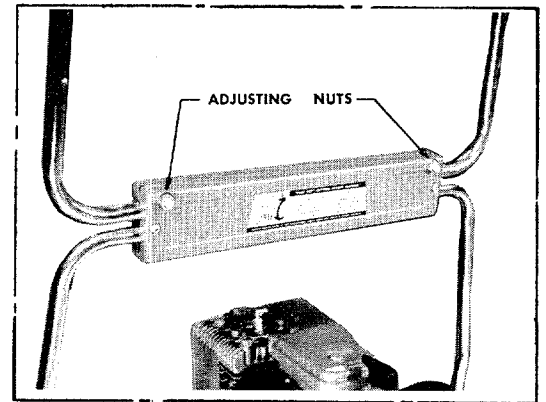
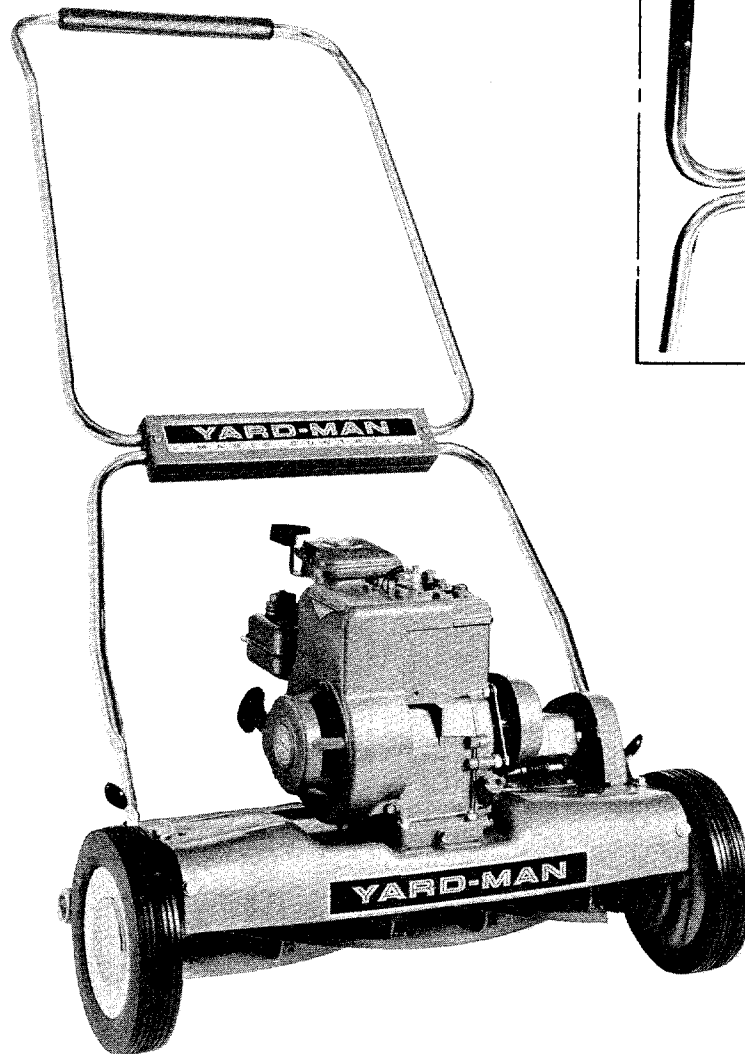
BUILDERS OF THE ORIGINAL SILENT YARD-MAN LAWN MOWER

# **IMPORTANT**

## **RULES FOR SAFE OPERATION**

1. Never place hands or feet under the machine
2. Do not attempt to clean, adjust or repair machine while engine is running.
3. Disconnect spark plug wire before cleaning, adjusting or repairing the machine.
4. Never leave machine running unattended.
5. Never run engine inside a building without opening all doors and windows.
6. Never fill the gasoline tank while the engine is hot, and wipe off any gasoline that might be spilled.
7. Only persons acquainted with the Rules of Safe Operation should be permitted to use mower.

No minor should operate mower unless properly supervised.



### SET-UP

To assemble the handle to the chassis — place the lower handle through the opening in the left hand end plate and slip it over the 1/2 in. dia. trunnion. While holding the stand-up handle latch open — press the right hand side of the lower handle toward the center of the mower until it will fit into the opening in the end plate — place handle through the opening and slip it over the 1/2" dia. trunnion.

With the lower handle section in the operating position the upper handle can now be adjusted to the most comfortable position for mowing. After selecting this position—tighten the two adjusting nuts on the back of the handle cover.

**IMPORTANT** — Use a wrench only - **DO NOT** use pliers.

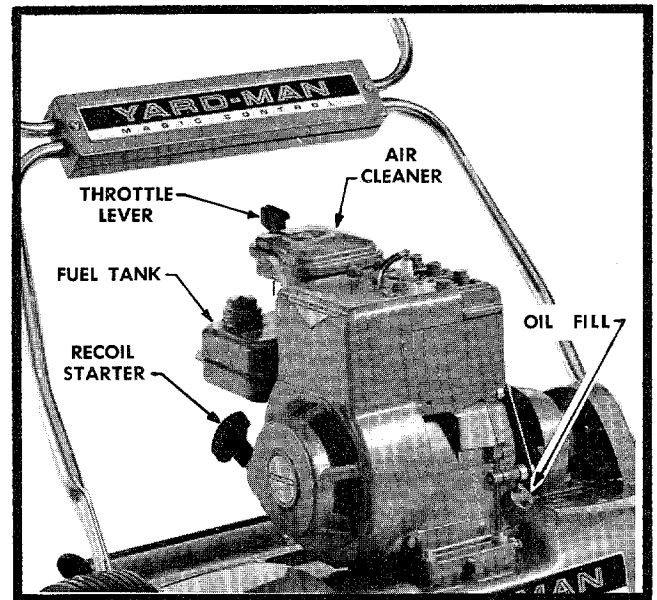
## BEFORE STARTING ENGINE

1. (Fig. 2) Remove oil fill plug. Place mower level and fill engine crankcase to top of oil fill plug with S.A.-E. No. 30W oil. Tilt mower to make sure oil flows completely into crankcase. Replace fill plug and tighten.
2. The air cleaner protects the engine against grit and dirt. CAUTION, an extremely dirty air cleaner element may cause engine to stall.

SEE ENGINE INSTRUCTION MANUAL FOR PROPER AIR CLEANER MAINTENANCE.

3. Fill tank with good grade regular, clean fresh gasoline. DO NOT MIX OIL with gasoline.

FOR COMPLETE ENGINE INFORMATION READ ENGINE INSTRUCTION BOOKLET FURNISHED WITH YOUR MOWER BEFORE STARTING OR OPERATING.



## TO START ENGINE

1. Place handle in magic control position with the handle down.
2. Set throttle control in start position.
3. Pull starter rope with a smooth, quick full stroke once. Move throttle lever to run position. Pull starter rope again.
4. When engine starts move throttle lever to an idle position until the engine warms up.

## BREAK-IN PERIOD

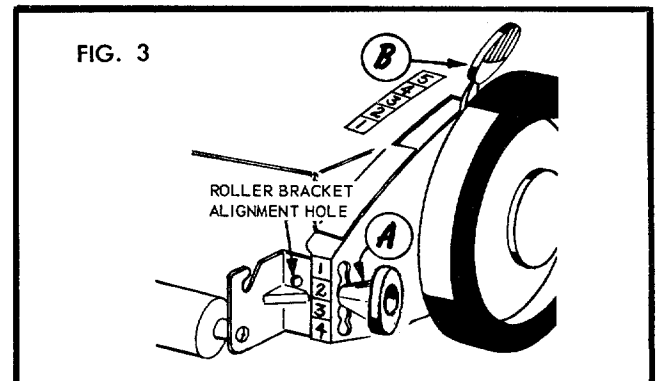
1. During first 10 hours of operation check frequently the following:
  - \* Oil level in engine crankcase.
  - \* Belt adjustment on engine to jackshaft drive. (Page 6)
  - \* Check all bolts, nuts and screws for tightness.

## OPERATING INSTRUCTIONS

TO PROPEL MOWER FORWARD, simply raise the handle . . . TO STOP MOWER, lower the handle.

## TO ADJUST HEIGHT OF CUT

1. Consult the chart located on underside of handle cover, the roller adjusting knobs (A) and wheel adjusting levers (B) must be in positions shown for desired cutting height. EXAMPLE: for 1½" cutting height roller knob must be in No. 2 position, and wheel lever must be in No. 4 position. (Fig. 3 and Fig. 3A)
2. Place mower on hard, flat surface and tilt machine back on roller until wheels are off the ground. Move right hand wheel lever outward to disengage locating pin, then move lever forward or back until it is aligned with proper number on deck label. Release outward pressure on lever and be sure that locating pin seats properly in hole in end plate. Repeat this procedure on left hand side, position lever so that mower is level.
3. Tilt mower forward until roller is off the ground. Turn right hand roller knob counter clockwise 2 full turns and move knob up or down until alignment hole in roller bracket is in line with proper number on label at rear of end plate. (see illustration) Turn knob clockwise until tightened securely. Repeat this procedure for other side.



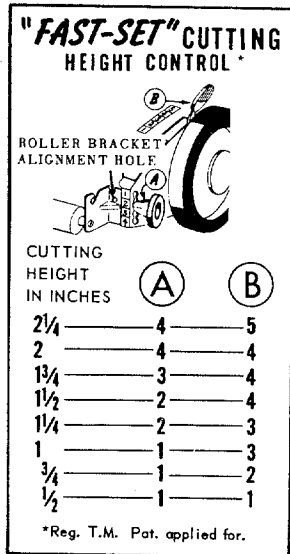


FIG. 3 A

## QUALITY OF CUT

Since a reel type mower does not create a lifting action like a rotary mower, it CANNOT lift up and cut tall blades of grass that are bent over. If cutting height is set too high, grass of this nature will not be in position to be drawn between the reel blades and cutter bar and in many cases will be pushed away by the revolving reel. Therefore, to obtain the utmost in performance and lawn appearance, cutting height ABOVE 1 3/8" IS NOT RECOMMENDED except where grass is upright and dense.

## SERVICE INSTRUCTIONS

ALWAYS REMOVE SPARK PLUG WIRE BEFORE MAKING ADJUSTMENTS—NEVER MAKE ANY ADJUSTMENTS WITH ENGINE RUNNING.

Check your mower frequently to make sure all parts are operating smoothly. Your mower left the factory properly adjusted and properly lubricated to assure you of a smooth clean cutting job. Keep it clean. The mower should be thoroughly cleaned and lubricated at the start of each mowing season for better operation and longer service life.

DO NOT use water to clean the mower—use a broom or brush to remove grass and dirt. When storing mower for any length of time, follow storage instructions in engine instruction booklet.

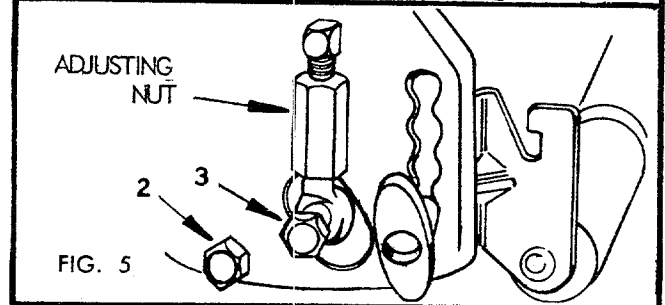
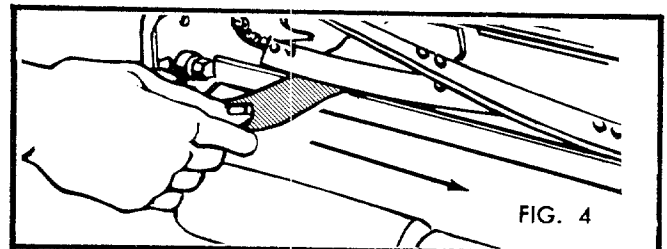
### CHECKING AND ADJUSTING CUTTER BAR CLEARANCE

When properly set, the cutter bar should almost contact the reel blades. Only on very fine grass should the reel blades touch the cutter bar, and then very lightly so that only a slight scraping noise is heard.

It's easy to check proper cutter bar clearance—just place a piece of newspaper about 2" wide and 6" long, between reel blades and cutter bar—See Step 2 below. Correct cutter bar clearance should pinch but not cut, the paper at both ends and the middle of the cutter bar. If it doesn't, adjust as follows:

### REEL AND CUTTER BAR PAPER TEST

1. Insert strip of newspaper between cutter bar and reel blades.
2. Turn reel slowly backwards. If the paper is held snugly by each blade then adjustment is correct.
3. Adjust cutter bar so that reel blades pinch paper without cutting it.



### CUTTER BAR ADJUSTMENT

(Fig. 5) Cutter Bar bolts (2 & 3) are tapered and extend beyond the side plate slightly. When these tapered bolts are tight any end play or looseness is eliminated. Be sure these bolts are tight before making adjustments.

#### TO TIGHTEN CUTTER BAR

Turn hex adjusting nut counterclockwise.

#### TO LOOSEN CUTTER BAR

Turn hex adjusting nut clockwise.

### SERVICE

1. Sharpening is required when the mower will not cut satisfactorily without the reel blades wiping on the cutter bar.
2. Most lawn mower service shops are equipped with factory built service equipment to give your mower the same precision it had when it came from the factory.

#### NOTE:

When cutter bar is removed for sharpening, left hand pivot bolt (Item 2 fig. 5) must be turned counterclockwise to be removed. Right hand pivot bolt on right hand side of mower must be turned clockwise.

## IMPORTANT

Your mower has been designed with a stand-up handle (See instructions on Pg. 7). Make sure the mower handle is in the stand-up position before attempting the following adjustments.

### TO ADJUST CHAIN DRIVE

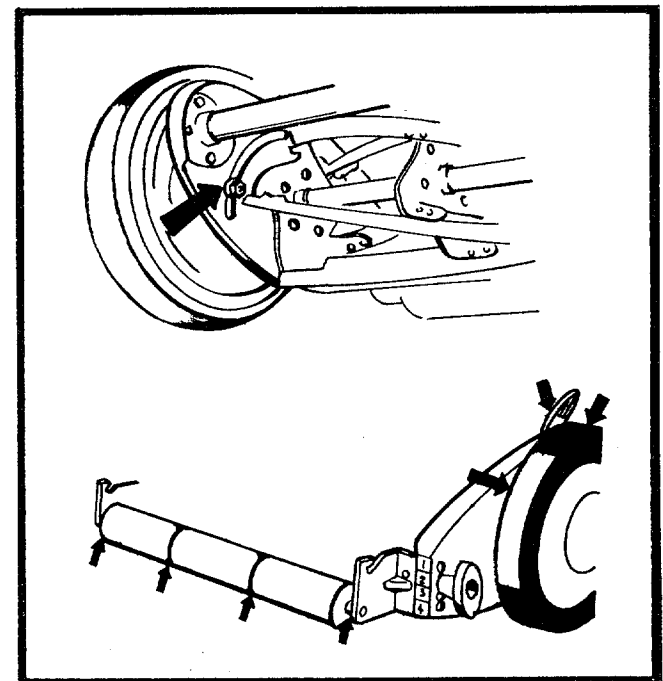
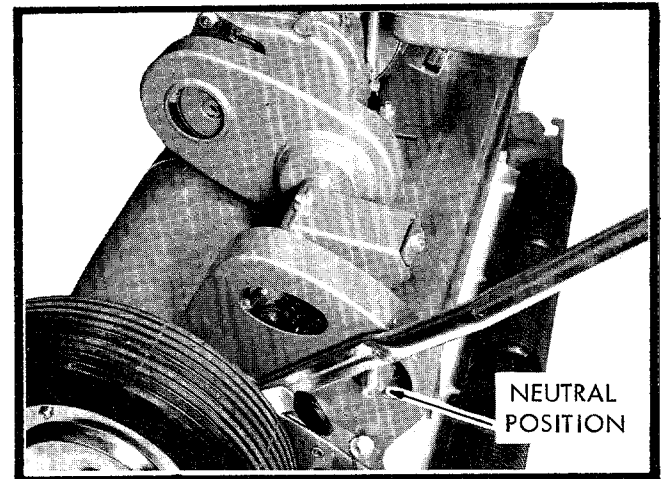
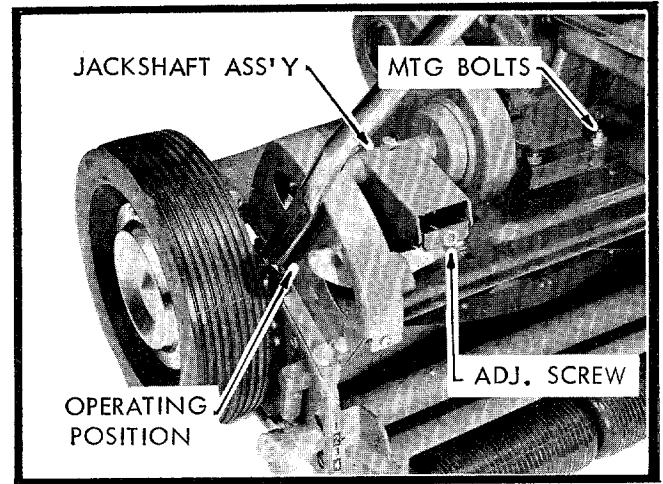
1. Loosen 4 engine mounting bolts and pull engine back.
2. Loosen 4 jackshaft mounting bolts and pull jackshaft assembly back to tighten chain. Allow  $\frac{1}{8}$  inch of slack in the chain, tighten mounting bolts and nuts securely.
3. Pull engine forward until the belt is tight then tighten the 4 engine mounting bolts securely.

### TO ADJUST BELT DRIVE

1. Check chain — if necessary adjust as described above (To Adjust Chain Drive).
2. If the chain does not need adjusting — loosen the 4 engine mounting bolts and with the handle in the stand-up position pull the engine forward until the belt is tight, then retighten the 4 engine mounting bolts securely.
3. Lower handle to neutral position. Disconnect spark-plug wire and fasten to the engine approx. 1-1/2 inches from the sparkplug. With a slow smooth motion pull the starter rope a few times — watching closely to see if the belt moves with the engine pulley. If the belt does move then a slight adjustment of one or two turns (counterclockwise) of the adjustment screw at the back of the jackshaft assembly must be made. **CAUTION:** Remember the handle must be in the stand-up position before making the adjustment.
4. Repeat Step 3 if necessary until a good disengagement of the belt (neutral position) is obtained, then while holding the adjustment screw — tighten the adjustment screw locknut.

## LUBRICATION

1. Change engine oil (crankcase) after first 5 hours of operating. See engine operating instructions.
2. Check air cleaner frequently.
3. Reel bearings require no attention until mower is serviced.
4. Check jackshaft oiler cup frequently, oil at beginning of mowing season and as needed. Oil roller shaft once or twice a year or as needed.
5. Lightly lubricate with engine oil, points indicated on roller and between end plates and wheel dust covers. Periodic lubrication at these points, will insure smooth mechanical operation. (Fig. 8)

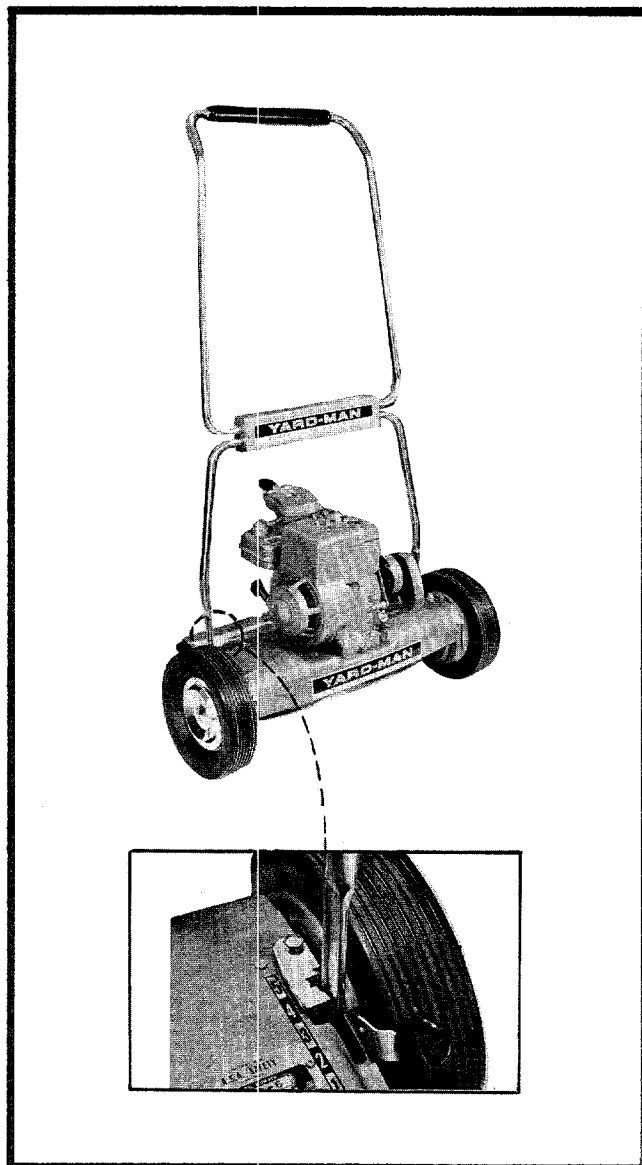


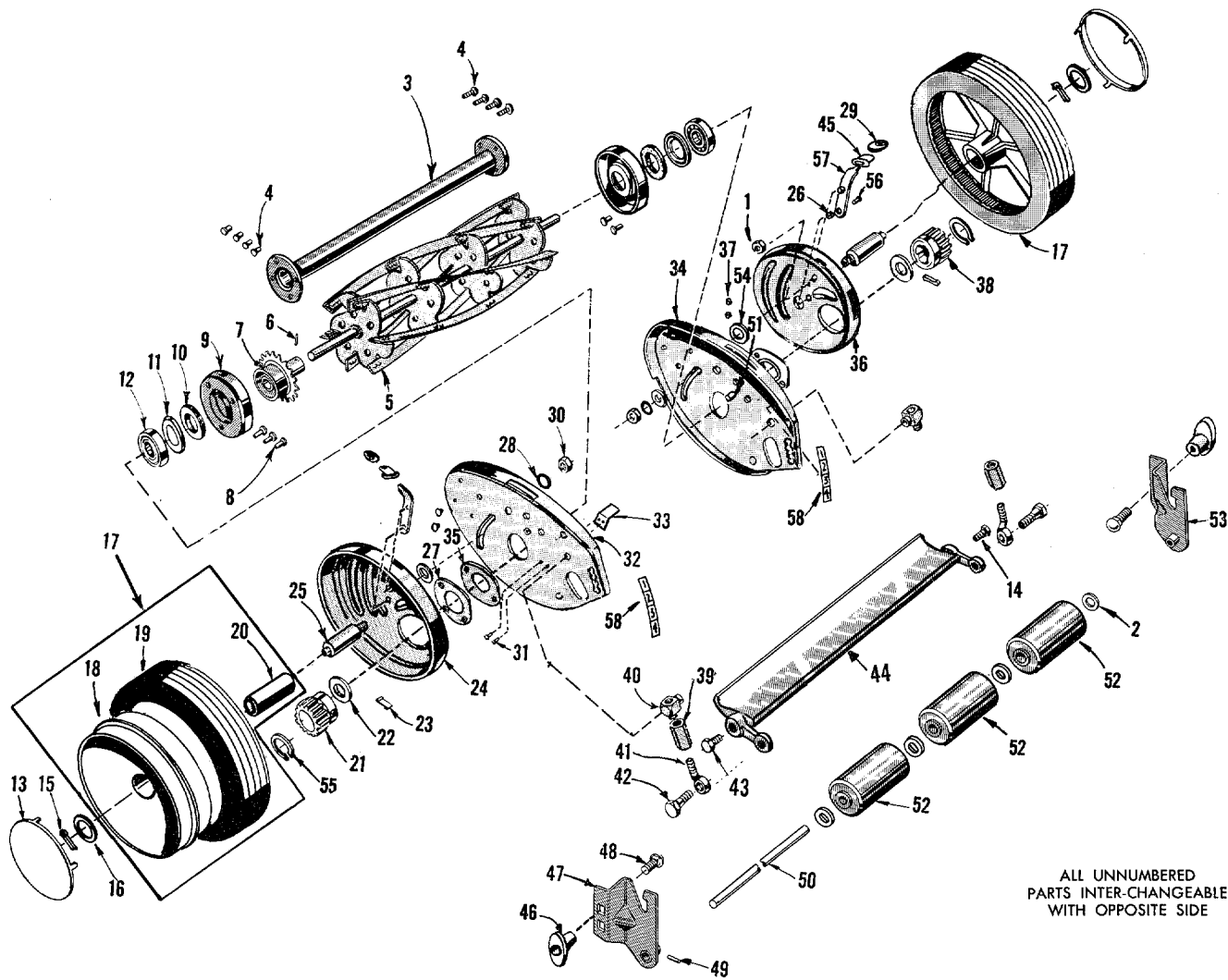
## STAND-UP HANDLE

1. There's no storage problem with the stand-up handle.
2. Move handle latch on the end plate in and move handle to upright position. To transport mower in car, remove handle from chassis for more convenient handling. **CAUTION:** Always remove spark-plug wire before attempting to lift the mower.

## STORAGE

Store your mower in a clean, dry place and keep clean to serve you well. If stored for a length of time, the engine should be drained of fuel. This will prevent the forming of gum deposits on essential parts in the carburetor fuel line and tank, which might affect the efficient operation of your engine when again used.





ALL UNNUMBERED  
 PARTS INTER-CHANGEABLE  
 WITH OPPOSITE SIDE



## HOW TO ORDER REPAIR PARTS FOR YOUR

### MODEL 1040-6 POWER MOWER

All parts listed herein may be ordered through YARD-MAN INCORPORATED  
WHEN ORDERING REPAIR PARTS, ALWAYS GIVE THE FOLLOWING INFORMATION AS  
SHOWN IN THIS LIST:

- |                     |                      |
|---------------------|----------------------|
| 1. THE PART NUMBER. | 3 The MODEL NUMBER.  |
| 2. THE PART NAME.   | 4. The NAME of item. |

Your Mower is right hand (R.H.) or left hand (L.H.) as you push.

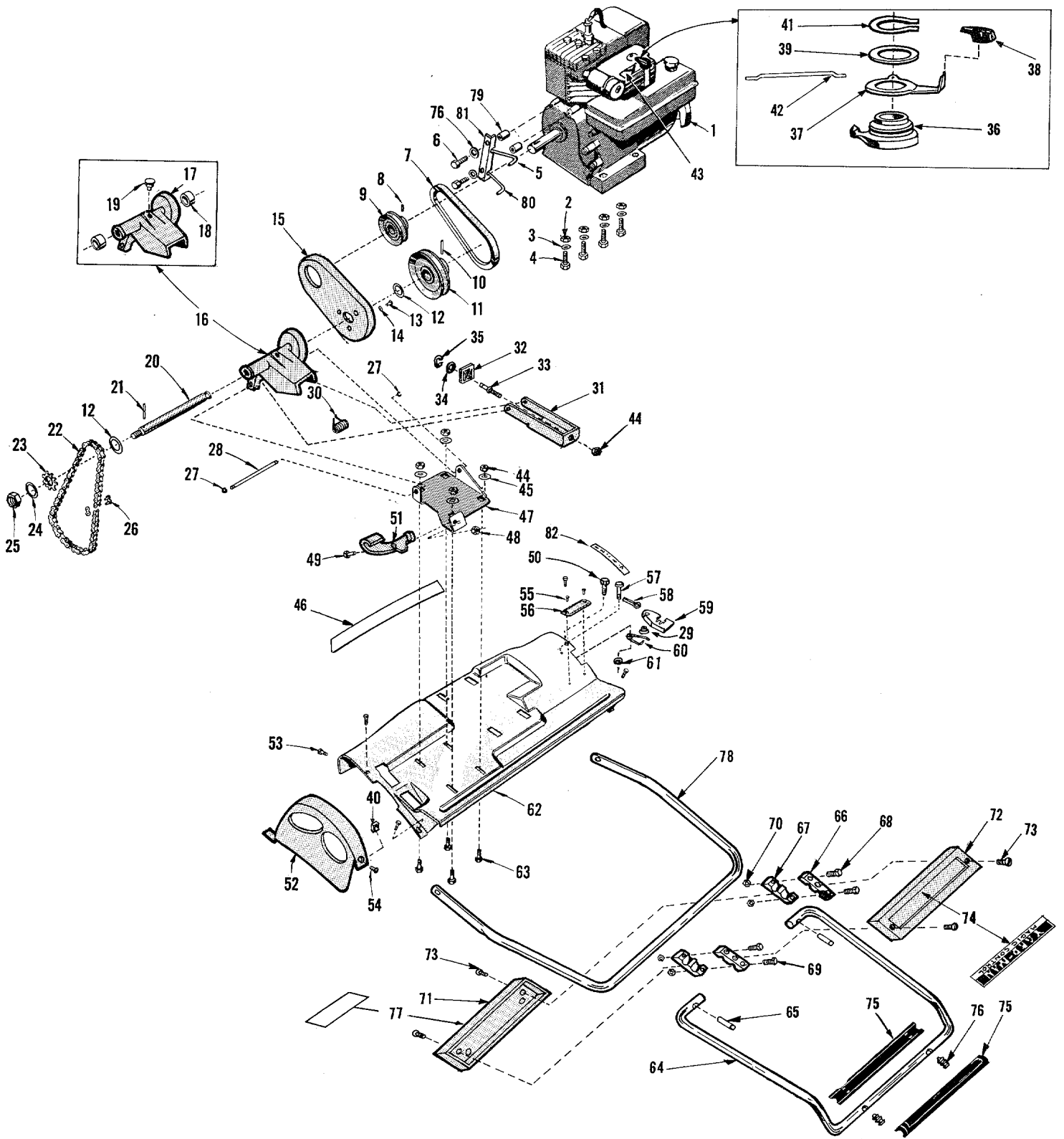
Do not use Key Numbers when ordering Repair Parts, always use Part Numbers.

### PARTS LIST

REF. NO.	PART NO.	NAME OF PART	REF. NO.	PART NO.	NAME OF PART
1	1534-8	*Nut (10-32 Gripco) .....	29	2643-18	Knob Wheel Adjust .....
2	1540-59	Washer—Roller .....	30	41-028	Nut .....
3	1112-18-17	Spacer Tube Assembly 18" .....	31	1117	*Screw (10-32 x 3/8 Sems) .....
4	1530-6	*Rivet (3/16 x 3/8) .....	32	1129-139-17	End Plate with Trunnions—L.H. ...
5	2135-20-17	Reel Assembly 18" .....	33	1723-1	Scraper .....
6	1548-5	Rollpin .....	34	1129-138-17	End Plate with Trunnions—R.H. ...
7	2121-2-17	Sprocket, Anti-wind Cup & Hub Ass'y .....	35	1624-138	Spacer .....
8	1530-20	*Rivet (3/16 x 13/32) .....	36	1118-8-17	Gear Housing—R.H. ....
9	1629-28	Retainer .....	37	1657-23	Nylon Bushing .....
10	104	Felt Washer .....	38	428	Pinion Gear .....
11	106	Felt Retainer .....	39	1539-31	Nut .....
12	3	Bearing .....	40	1156-6	Trunnion .....
13	2674-33-17	Hub Cap .....	41	1513-40	Bolt .....
14	1509-86	Screw Cutter Bar L.H. Thd. ....	42	453	Screw .....
15	142	*Cotter Pin (1/8 x 5/8) .....	43	455	Screw Cutter Bar—R.H. Thd. ....
16	141	Washer .....	44	2134-11-17	Cutter Bar Assembly—18" .....
17	1108-80-41	Wheel and Tire Assembly .....	45	1622-50	Dust Cover .....
18	1110-27-41	Drive Wheel & Bearings Less Tire .....	46	1643-23	Roller Adjust Knob .....
19	2619-25	Tire .....	47	2132-12-17	Roller Bracket Assembly—L.H. ....
20	1652-52	Bearing .....	48	1529-25	*Bolt (5/16-18 x 3/8) .....
21	425	Pinion Gear .....	49	1548-7	Rollpin .....
22	109	Felt Washer .....	50	1632-57	Roller Shaft—18" .....
23	323	Pawl .....	51	10	Trunnion .....
24	1118-9-17	Gear Housing—L.H. ....	52	1126-6	Roller Assembly—18" .....
25	1631-26	Axle .....	53	2132-11-17	Roller Bracket Assembly—R.H. ...
26	1540-55	Washer .....	54	1540-43	Washer—Special .....
27	1629-41	Retainer .....	55	1650-21	Retaining Ring .....
28	1657-20	Bushing .....	56	1509-38	*Screw (#10-32 x 3/8 Hex. Hd.) ...
			57	1155-14-41	Spring & Trunnion Assembly ...
			58	1616-119	Roller Adjust Label .....

For illustration—See Page 8

\*Standard Hardware Item—May be Purchased Locally



## MODEL 1040-6

### PARTS LIST

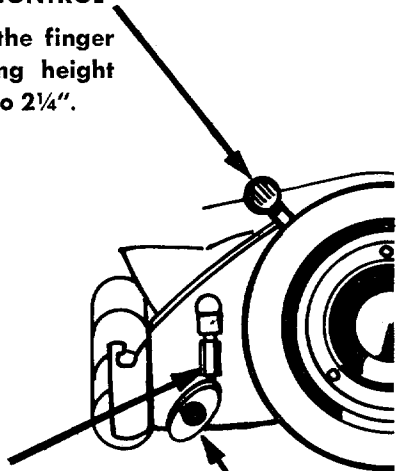
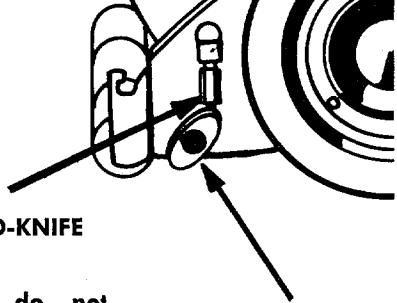
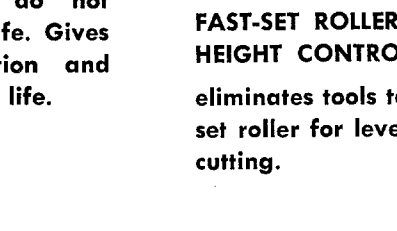
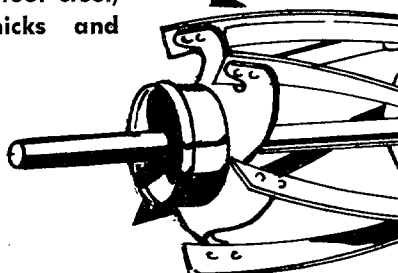
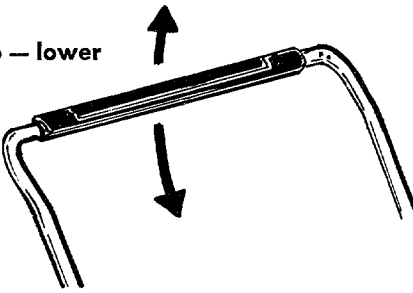
REF. NO.	PART NO.	NAME OF PART	REF. NO.	PART NO.	NAME OF PART
1		Briggs & Stratton Engine Model 60102 Type 0135-01 .....	41	1650-36	Retaining Ring .....
2	70	*Nut (5/16-18 Hex) .....	42	1625-24	Link—Throttle Control .....
3	1025	*Lock Washer (5/16) .....	43	1616-280	Label—Throttle Control .....
4	1529-11	*Bolt (5/16-18 x 1 3/8 Carriage) .....	44	67	*Nut (1/4-20 Hex) .....
5	1724-7	Keeper—Belt Upper—18" .....	45	1018	*Lockwasher (1/4) .....
6	1509-69	*Screw (1/4-20 x 1 3/4 Fillister Hd.) .....	46	2616-264	Label Yard-Man .....
7	1651-20	"V" Belt .....	47	3609-82-17	Bracket .....
8	1508-13	*Set Screw (5/16-24 x 7/32) .....	48	41-028	*Nut (5/16-24 Hex Lock Gripco) .....
9	1626-40-17	Pulley .....	49	1513-18	Bolt (5/16-24 Hex Shoulder Bolt) .....
10	1548-11	Rollpin .....	50	1513-41	Bolt (5/16-24 x 3/4 Hex Hd.) .....
11	2120-34-17	Pulley Assembly .....	51	2705-26	Lever .....
12	1540-17	*Washer (5/8 x 15/16) .....	52	3639-48-17	Guard .....
13	1511-9	Screw (10-32 x 1/2 Sems) .....	53	1513-8	*Bolt (5/16-24 x 1/2 Hex Hd.) .....
14	1540-55	Washer .....	54	117	*Screw (10-32 x 3/8 Phlps. Hd.) .....
15	3639-51-17	Belt Guard .....	55	1020	*Screw (6 x 1/4 Rd. Hd.) .....
16	2102-144-17	Jackshaft Housing, Bearings & Oiler Assembly .....	56	1605-375	Name Plate—18" .....
17	3601-122-17	Jackshaft Housing .....	57	1545-23	Clevis Pin .....
18	1652-1	Bearing .....	58	1547-4	Cotter Pin .....
19	1691-2	Oiler .....	59	2627-21-17	Latch .....
20	1632-26	Jackshaft .....	60	2642-51	Spring .....
21	1546-2	Pin .....	61	1097	*Washer (3/16) .....
22	1654-2	Chain .....	62	5690-9-17	Deck—18" .....
23	1638-16	Sprocket .....	63	1529-15	Bolt (1/4-10 x 5/8) .....
24	1036	Washer .....	64	3712-63-01	Upper Handle Section 18" .....
25	1538-16	Nut (7/16-20 Hex Jam) .....	65	1548-5	Rollpin .....
26	1113-13	Connector Link .....	66	2609-316	Bracket—Handle—Front .....
27	1650-10	Retaining Ring .....	67	2609-317	Bracket—Handle—Rear .....
28	1547-3	Pin .....	68	1509-41	Bolt (5/16-18 x 1 1/4 Hex Hd.) .....
29	1624-122	Spacer .....	69	1509-40	Bolt (5/16-18 x 1 3/4 Hex Hd.) .....
30	1642-82-17	Spring .....	70	1538-25	Nut (5/16-18 Hex Lock Special) .....
31	2609-322-17	Bracket—Striker .....	71	3622-94-17	Cover—Handle Rear .....
32	2624-164	Spacer—Adjust .....	72	3622-91-17	Cover—Handle Front .....
33	1511-36	Screw—Adjust .....	73	1117	Screw (10-32 x 3/8 Rd. Hd.) .....
34	1540-61	Washer (.250 I.D. x 1/2 O.D. x 1/16) .....	74	2616-285	Label—Handle Cover .....
35	1650-37	Retaining Ring .....	75	2710-40	Grip—Handle .....
36	2610-14	Adapter .....	76	1547-35	Pin—Grip Retaining .....
37	2705-25-17	Lever—Throttle Control .....	77	1616-286	Label—Adjustment Chart .....
38	2643-41	Knob—Throttle Control .....	78	3712-61-01	Handle—Lower 18" .....
39	1652-12	Wave Washer .....	79	1624-69	Spacer .....
40	1534-8	*Nut (10-32 Hex. Lock) .....	80	1724-9	Lower Belt Keeper—18" .....
			81	1606-48	Belt Keeper Bracket .....
			82	1616-114	Label—Wheel Adjust .....

\*Standard Hardware Items, May Be Purchased Locally

# When you own this -- YARD-MAN

## POWER REEL MOWER

### you enjoy these outstanding features

<p><b>FAST-SET WHEEL HEIGHT CONTROL</b> touch of the finger sets cutting height from 1/2" to 2 1/4".</p>  <p><b>SIMPLE SELF-LOCKING BED-KNIFE ADJUSTMENT</b> reel blades do not touch bed-knife. Gives silent operation and extra mower life.</p>  <p><b>FAST-SET ROLLER HEIGHT CONTROL</b> eliminates tools to set roller for level cutting.</p> 	<p><b>AUSTEMPERED REEL BLADES</b> hard as tool steel, resists nicks and dulling.</p>  <p><b>MAGIC-CONTROL HANDLE</b> raise to go -- lower to stop.</p> 
-----------------------------------------------------------------------------------------------------------------------------------------------------------------------------------------------------------------------------------------------------------------------------------------------------------------------------------------------------------------------------------------------------------------------------------------------------------------------------------------------------------------------------------------------------------------------------------------------------------------------	-----------------------------------------------------------------------------------------------------------------------------------------------------------------------------------------------------------------------------------------------------------------------------------------------------------------------------------------

## WARRANTY

This YARD-MAN unit is guaranteed for one year from date of purchase (90 days when used commercially) against defects in workmanship or material under normal use and service.

We agree to repair or replace without charge to the purchaser, including labor, any part proven to be defective within the warranty period, except the Engine which is the responsibility of the Engine manufacturer.

Parts for this YARD-MAN unit will be available for at least ten years from the date of purchase. This warranty will not apply to a unit which has been subjected to—misuse, negligence, an accident, or to a unit which has been altered in any way.

**YARD-MAN INC**

JACKSON, MICHIGAN