

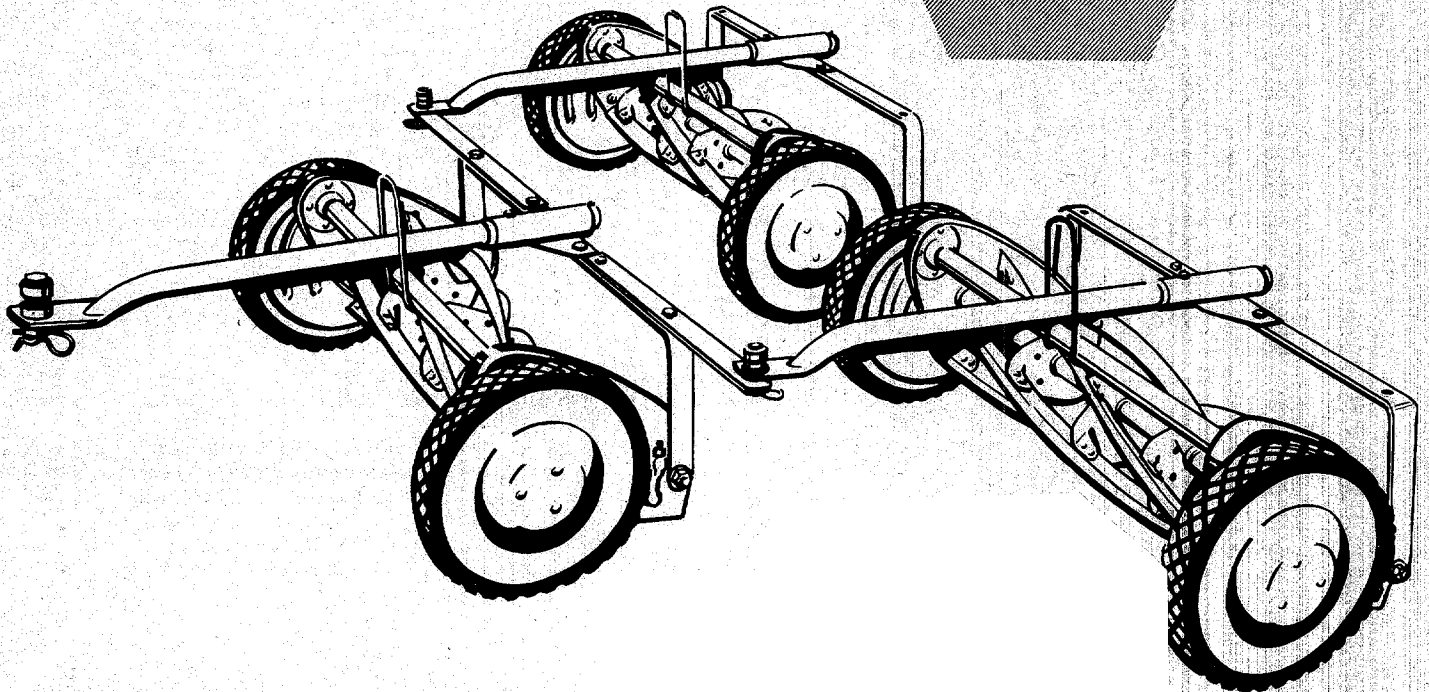
OPERATING INSTRUCTIONS

AND PARTS LIST

21 INCH
TRAILER
MOWER



MODEL NUMBER
1020-0



0611-165

PRINTED IN U.S.A.

OCTOBER 1958

YARD-MAN Incorporated 1410 W. Ganson St., Jackson, Michigan

BUILDERS OF THE ORIGINAL SILENT YARD-MAN LAWN MOWER

ADJUSTMENTS

TO TIGHTEN CUTTER BAR ADJUSTMENT

1. Loosen top nut (5) one quarter turn
2. Tighten lower nut (6)
3. Bolts (7 & 8) must be tight after adjustment

TO LOOSEN CUTTER BAR ADJUSTMENT

1. Loosen lower nut (6) one quarter turn
2. Tighten top nut (5)
3. Bolts (7 & 8) must be tight after adjustment

SILENT YARDMAN PAPER TEST

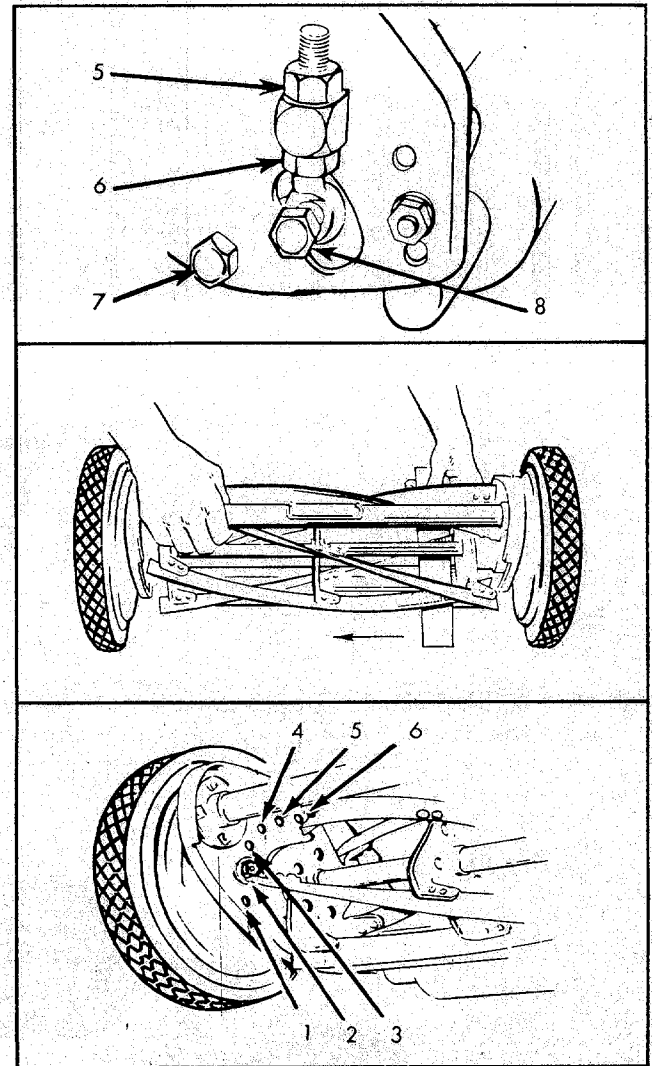
1. Insert strip of newspaper
2. Turn reel slowly
3. Adjust cutter bar so that reel blades pinch paper without cutting it

TO CHANGE LAWN MOWER FROM HIGH TO LOW CUT

1. Remove wheel axle nut. Remove wheel and axle from side plate.
2. Locate wheel and axle in cutting height required according to following instructions.
3. HIGH CUT— $1\frac{3}{8}$ to $2\frac{1}{4}$ in.
Axle located in hole 1 and dowel pin in hole 4.
MEDIUM CUT— $\frac{3}{4}$ to $1\frac{3}{8}$ in.
Axle located in hole 2 and dowel pin in hole 5.
LOW CUT— $\frac{3}{8}$ to 1 in.
Axle located in hole 3 and dowel pin in hole 6.
4. Be sure dowel pin in gear housing seats in side plate hole.
5. Replace washers and retaining nut. Tighten securely.

TO ADJUST HEIGHT OF CUT

1. Remove both roller hanger bolts.
2. Raise or lower roller to desired cut.
3. Set both sides of roller at same height, replace bolts and tighten.



LUBRICATION

1. Seals on all bearings, hold dirt out and grease in. No further lubrication is required until mower is sharpened.
2. Oil Roller Bearing once or twice a year.

SERVICE

1. Sharpening is required when the mower will not cut satisfactorily without the reel blades wiping on the cutter bar.
2. Most lawn mower service shops are equipped with Yard-Man factory-built service equipment to give your YARD-MAN the same precision it had when it came from the Yard-Man factory.

HITCH ASSEMBLY

1. Remove Trailer Mowers and Hitch Brackets from cartons. Carefully examine the illustrations of the assembled mowers. Correct assembly of the hitch is important in operating performance of the Trailer Mowers.
2. Adjust roller $2\frac{3}{4}$ -inches from ground to mounting bolts when mower is set in Hi-Cut position. Tighten nuts. (Fig. 3)
3. Insert Tow Bar through Tow Bar Plate. Secure with washer, clevis pin, and cotter. (Fig. 1)
4. Assemble Transport Hook around Spacer Tube (Flat side to rear of mower). Transport Hook must straddle Tow Bar. (Fig. 1 & Fig. 3)

ADJUSTMENTS

1. Cutting height of the Trailer Mower is adjustable from $\frac{1}{2}$ to $2\frac{1}{4}$ inches. See instructions for changing adjustment from High to Low Cut.
2. The Draw Bar should be in a parallel position for operation. The Tow Bar in this position is approximately $9\frac{1}{2}$ inches above the ground level. When the Tow Bar is in inverted position it is then approximately 11 inches above the ground level.
3. Whatever position the cutting height of mower is set Tow Bar should be located in parallel position.

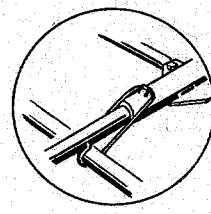
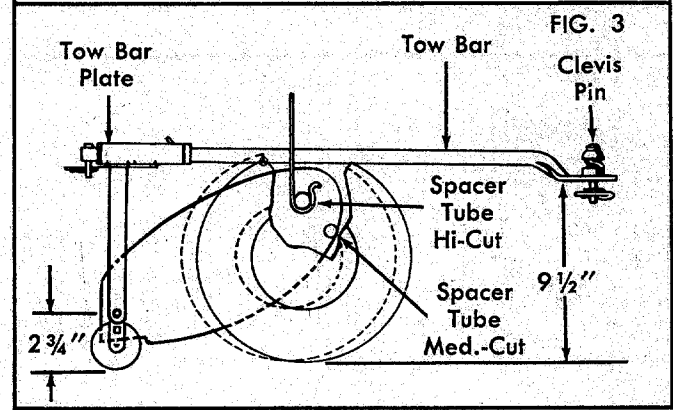
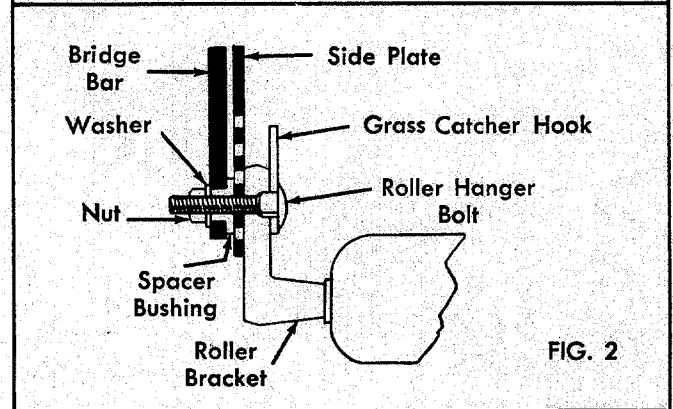
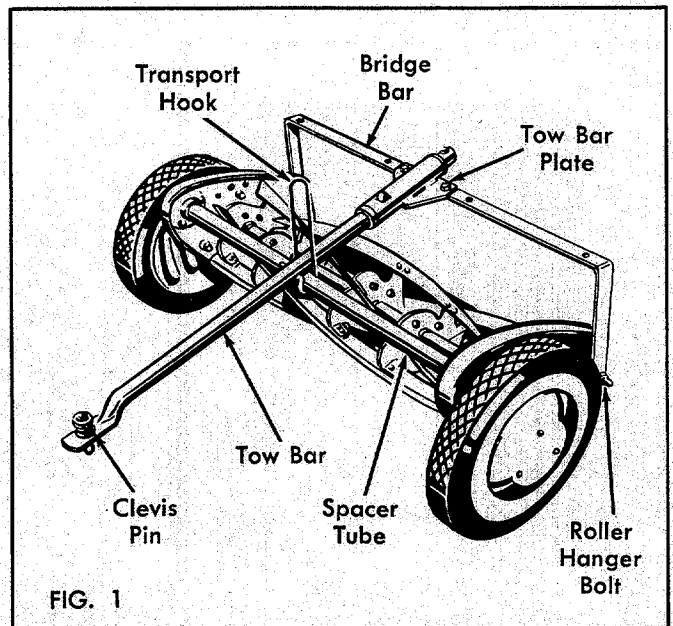
OPERATION

The Hitch for this Trailer Mower has been designed to give dependable operating performance and flexibility under many lawn mowing conditions.

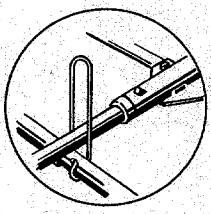
It is easily and quickly attached to your power unit. The Clevis Pin and Spring assembly provided with each Hitch permits independent floating action so that the mower will follow the contour of the lawn.

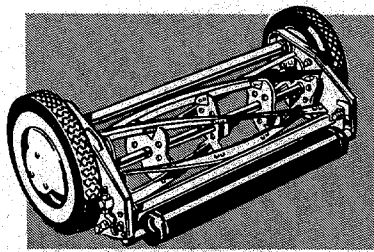
The Lock Spring prevents the mower from overturning if twigs, wire or other objects become lodged in the reel. The Spring also provides a latch for holding the Mowers in transport position during transport from storage to the mowing location. Like all precision built machines, proper use and reasonable care are required to assure continuously satisfactory operation and fine cutting performance.

ANTI-FLIP SPRING TRANSPORT POSITION
 Raise Mower Spacer Tube up and position Anti-Flip Spring over lip on Tow Bar Plate.

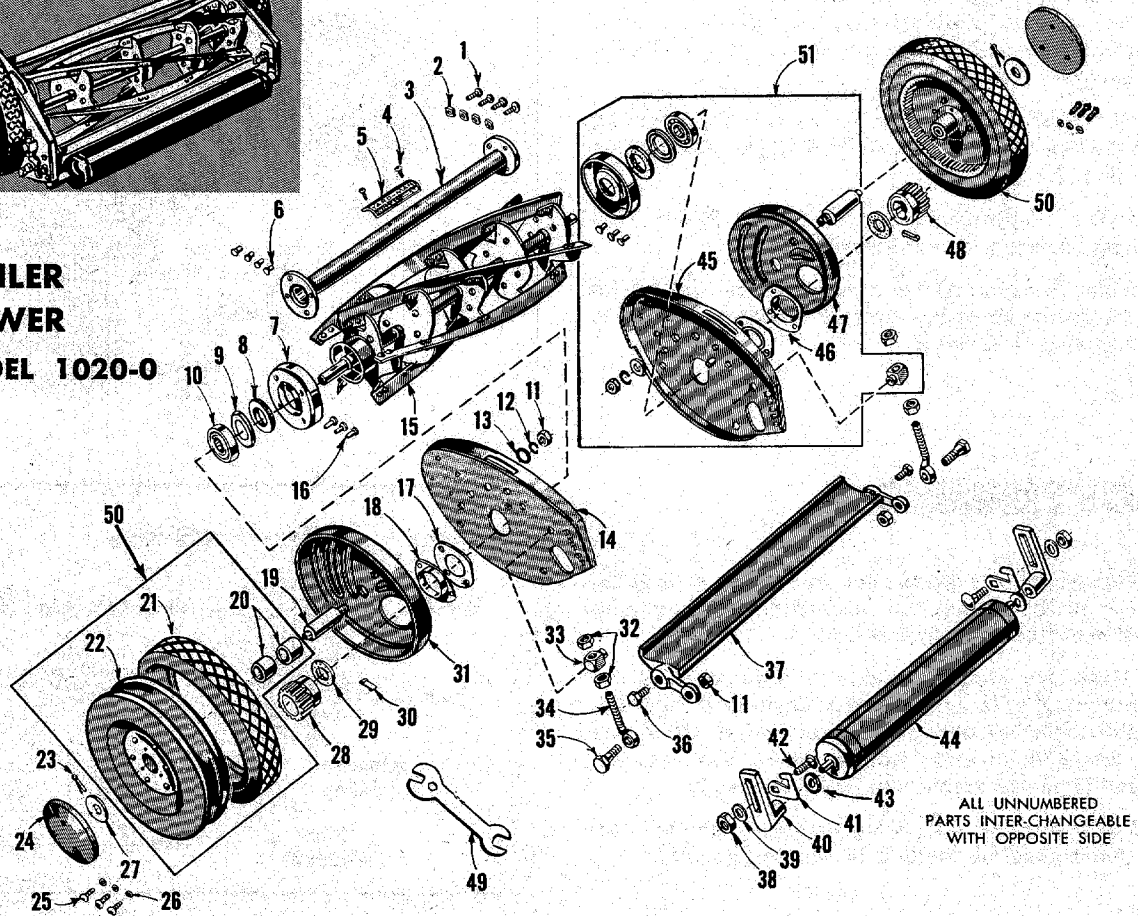


ANTI-FLIP SPRING MOWING POSITION
 Locate the Anti-Flip Spring in upright position. Mower floats freely in this position.

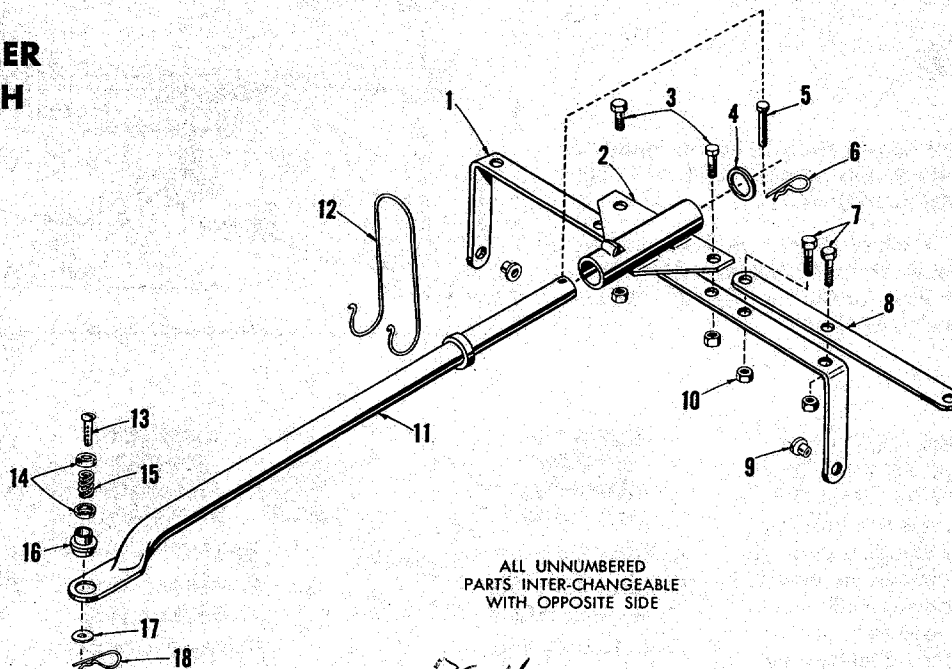




**TRAILER
MOWER
MODEL 1020-0**



**TRAILER
HITCH**



Pg. 4

For Parts List—See Page

HOW TO ORDER REPAIR PARTS FOR YOUR



MODEL 1020-0 TRAILER MOWER

WHEN ORDERING REPAIR PARTS, ALWAYS GIVE THE FOLLOWING INFORMATION AS SHOWN IN THIS LIST:

1. The PART NUMBER.
2. The PART NAME.
3. The MODEL NUMBER.
4. The NAME of item.

Your mower is right hand (R.H.) or left hand (L.H.) as you are seated on mower.

PARTS LIST

Drawing Ref. No.	Part No.	Description	Drawing Ref. No.	Part No.	Description
1	117	*Screw (10-32 x 7/16 Rd Hd Sems).....	30	323	Pawl.....
2	116	*Nut (#10-32).....	31	3601-70L-17	Gear Housing—L.H.....
3	1112-15-17	Spacer Tube Assembly—21".....	32	52	*Nut (3/8-24 semi fin Hex).....
4	88	*Screw (#6 x 1/4 Self Tap).....	33	11	Trunnion.....
5	1605-117	Name Plate.....	34	451	Bolt —Cutter Bar Adjusting.....
6	17	*Rivet (3/16 x 3/8 Rd Hd).....	35	453	Screw (Rear).....
7	1629-28	Retainer.....	36	455	Screw (Front).....
8	104	Felt Washer.....	37	2134-8-17	Cutter Bar Assembly.....
9	106	Felt Retainer.....	38	70	Nut (5/16-18).....
10	3	Bearing.....	39	159	*Washer (5/16 x 3/8).....
11	149	*Nut (3/8-24 Jam).....	40	1609-80-17	Roller Bracket.....
12	1076	*Lockwasher (3/8).....	41	171	Basket Hook.....
13	154	*Washer (3/8 x 3/8).....	42	1529-12	*Bolt (5/16-18 x 1 1/2 Carriage).....
14	1129-46L-17	End Plate with Trunnions—L.H.....	43	757	*Washer (5/16 x 3/4).....
15	3135-11-17	Reel Assembly—21".....	44	556-21	Roller—21".....
16	9	*Rivet (3/16 x 13/32 Rd Hd).....	45	1129-46R-17	End Plate with Trunnions—R.H.....
17	1629-9	Retainer.....	46	1601-19R	Pinion Housing—R.H.....
18	1601-19L	Pinion Housing L.H.....	47	3601-70R-17	Gear Housing—R.H.....
19	340	Axle.....	48	425	Pinion Gear—R.H.....
20	137	Bearing.....	49	72	Wrench.....
21	2619-13	Tire.....	50	1108-28	Drive Wheel Assembly with Tire.....
22	2110-11-18	Drive Wheel Less Tire.....	51	1129-47R-17	End Plate Assembly—R.H.....
23	142	*Cotter Pin (1/8 x 3/8).....		1129-47L-17	End Plate Assembly—L.H.....
24	2718-1-17	Wheel Weight.....			
25	1509-48	*Screw (#10-32 x 1 1/8).....			Assemblies Not Illustrated
26	1540-44	*Washer (13/64 x 3/8).....		3111-18R-17	End Plate Assembly—R.H.....
27	141	*Washer (3/8 x 1 1/4).....			Less Gear Housing and Axle
28	428	Pinion Gear—L.H.....		3111-18L-17	End Plate Assembly—L.H.....
29	109	Felt Washer.....			Less Gear Housing and Axle

HITCH PARTS LIST

Drawing Ref. No.	Part No.	Description	Drawing Ref. No.	Part No.	Description
1	3698-3-18	Bridge.....	10	1538-6	*Nut (5/16-18).....
2	3111-24-18	Tow Bar Plate Assembly.....	11	3125-6-18	Tow Bar Assembly.....
3	3-79	*Bolt (5/16 x 3/4).....	12	2642-35	Transport Hook.....
4	1540-55 58	Washer.....	13	1545-8	Clevis Pin.....
5	41-042	Clevis Pin.....	14	41-035	Spring Cup.....
6	1547-12	Cotter Pin.....	15	41-036	Spring.....
7	1509-16	Bolt (5/16-18 x 3/8 Hex).....	16	1657-16	Bushing.....
8	1697-4-18	Outrigger Bar.....	17	1540-56	*Washer (11/32 x 3/8).....
9	1657-5	Spacer Bushing.....	18	1547-5	Cotter Pin.....

* Standard Hardware Item—May be Purchased Locally