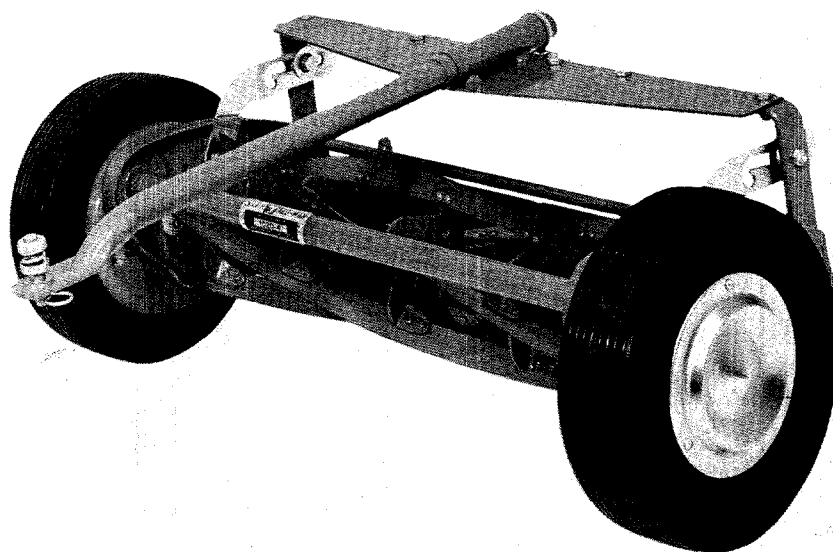


operating manual *and* --- --- parts list

MODEL 1020-6

21-INCH
TRAILER MOWER



YARD-MAN.

1410 West Ganson Street — Jackson, Michigan 49202

ADJUSTMENTS

TO CHANGE WHEELS FROM HIGH TO LOW CUT (FIG. 3)

1. Loosen axle nut approx. 3 turns. Disengage gear housing dowel from end plate by moving wheel & gear housing outward. Move wheel to desired setting shown below.
2. HIGH CUT— $1\frac{3}{8}$ to $2\frac{1}{4}$ in.
Axle nut located in hole 1 and dowel pin in hole 4.
MEDIUM CUT— $\frac{3}{4}$ to $1\frac{1}{8}$ in.
Axle nut located in hole 2 and dowel pin in hole 5.
LOW CUT— $\frac{3}{8}$ to 1 in.
Axle nut located in hole 3 and dowel pin in hole 6.
3. Be sure dowel pin & shoulder nut seat in side plate holes.
4. Tighten axle nut securely.
5. Adjust roller to level chassis & attain desired height of cut.

TO ADJUST ROLLER

1. Remove both roller hanger bolts.
2. Raise or lower roller to desired cut.
3. Set both sides of roller at same height, replace bolts and tighten.

SILENT YARDMAN PAPER TEST. (FIG. 2)

1. Insert strip of newspaper approx. 2" wide between cutter Bar & Reel
2. Turn reel slowly backward, with wheels off ground.
3. Adjust cutter bar so that reel blades pinch paper without cutting it.

TO TIGHTEN CUTTER BAR ADJUSTMENT (FIG. 1)

1. Loosen top nut (5) one quarter turn
2. Tighten lower nut (6)
3. Bolts (7 & 8) must be tight after adjustment (both sides)

TO LOOSEN CUTTER BAR ADJUSTMENT (FIG. 1)

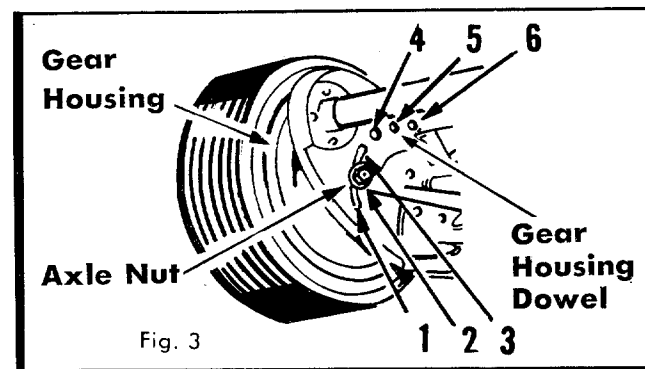
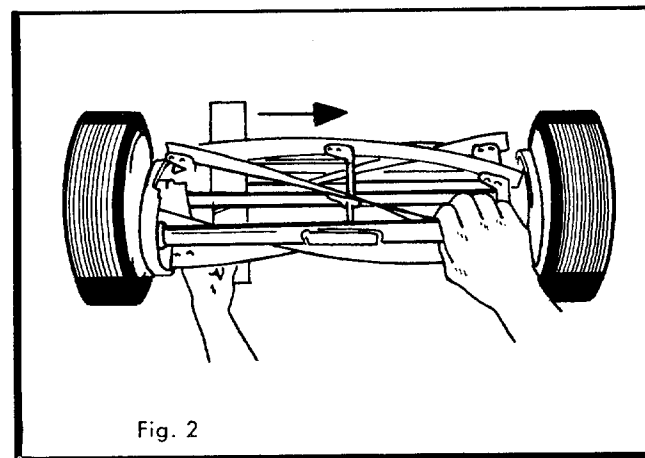
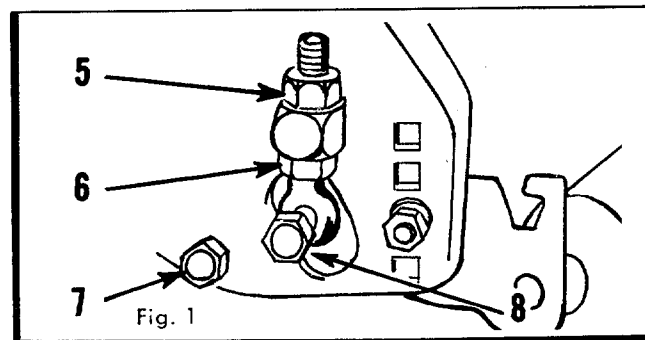
1. Loosen lower nut (6) one quarter turn
2. Tighten top nut (5)
3. Bolts (7 & 8) must be tight after adjustment (both sides)

NOTE:

When cutter bar is removed for sharpening, left hand pivot bolt (Item 7), must be turned counter clockwise to be removed. Right hand pivot bolt must be turned clockwise.

LUBRICATION

1. Seals on all bearings hold dirt out and grease in. No further lubrication is required until mower is sharpened.
2. Oil roller support and shaft once or twice a year.



SERVICE

1. Sharpening is required when the mower will not cut satisfactory without the reel blades wiping on the cutter bar.
2. Most lawn mower service shops are equipped with factory-built service equipment to give your mower the same precision it had when it came from the factory.

**TO ASSEMBLE MOWERS INTO GANG UNITS
SEE INSTRUCTIONS ON PAGE 4**

HITCH ASSEMBLY

1. Remove Trailer Mowers and Hitch Brackets from cartons. Carefully examine the illustrations of the assembled mowers. Correct assembly of the hitch is important in operating performance of the Trailer Mowers.
2. Insert Tow Bar through Tow Bar Plate. Secure with washer, clevis pin, and cotter. (Fig. 1)

ADJUSTMENTS

1. Cutting height of the Trailer Mower is adjustable from $\frac{1}{2}$ to $2\frac{1}{4}$ inches. See instructions for changing adjustment from High to Low Cut.
2. The Draw Bar should be in a parallel position for operation. The Tow Bar in this position is approximately 9 inches above the ground level. When the Tow Bar is in inverted position it is then approximately 11 inches above the ground level.
3. Whatever position the cutting height of mower is set Tow Bar should be located in parallel position.

OPERATION

The Hitch for this Trailer Mower has been designed to give dependable operating performance and flexibility under many lawn mowing conditions.

It is easily and quickly attached to your power unit. The Clevis Pin and Spring assembly provided with each Hitch permits independent floating action so that the mower will follow the contour of the lawn.

TRANSPORTING

Convenient transport brackets are provided for moving the trailer mower from place to place without damage to reel or cutter bar.

To engage transport brackets, lift front spacer tube to tilt mower back on roller as far as possible. While holding mower in this position lift up on ends of transport brackets to make certain that shoulder bolts in sides of bridge bar seat properly in notches at forward ends of bracket slots then release spacer tube.

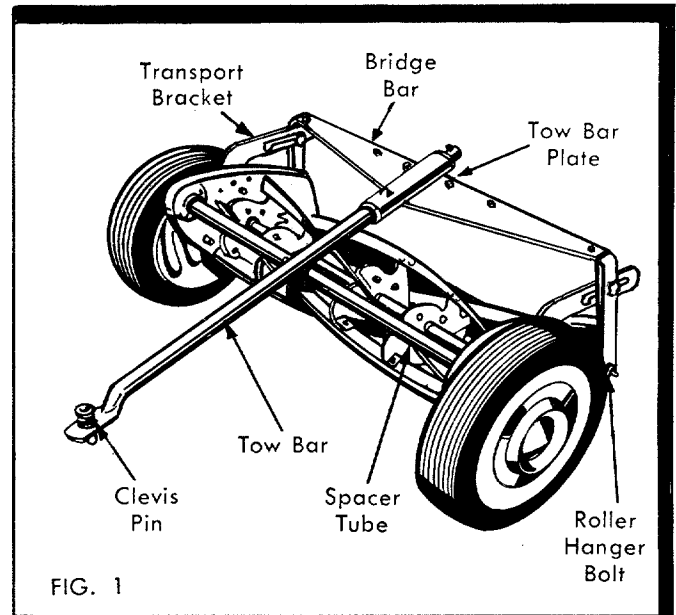


FIG. 1

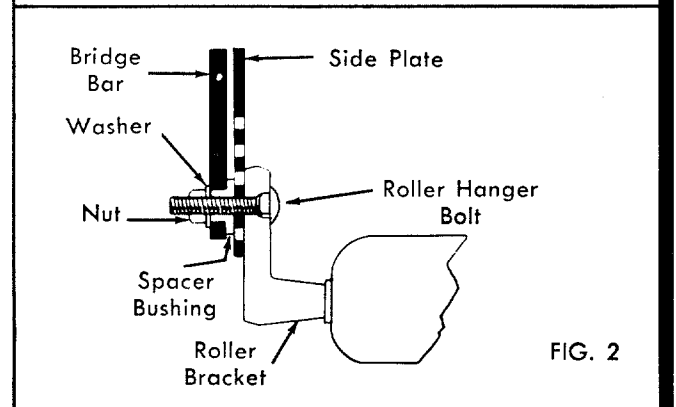


FIG. 2

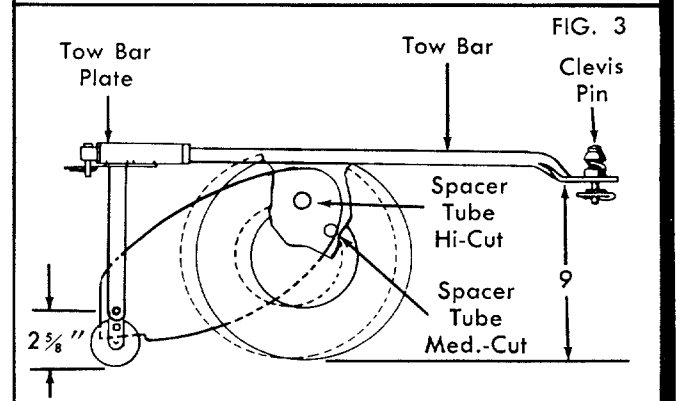
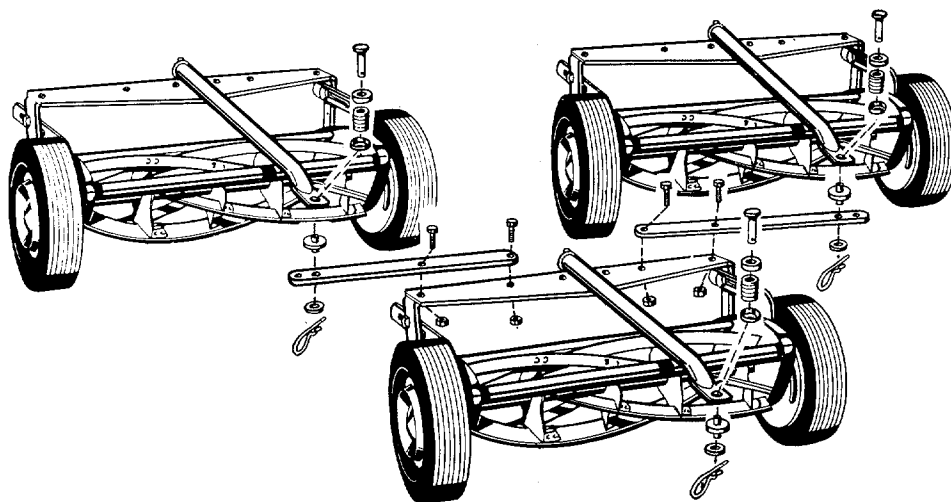


FIG. 3

The wheels, reel and cutter bar will remain suspended off the ground and mower will run on its rollers during transport.

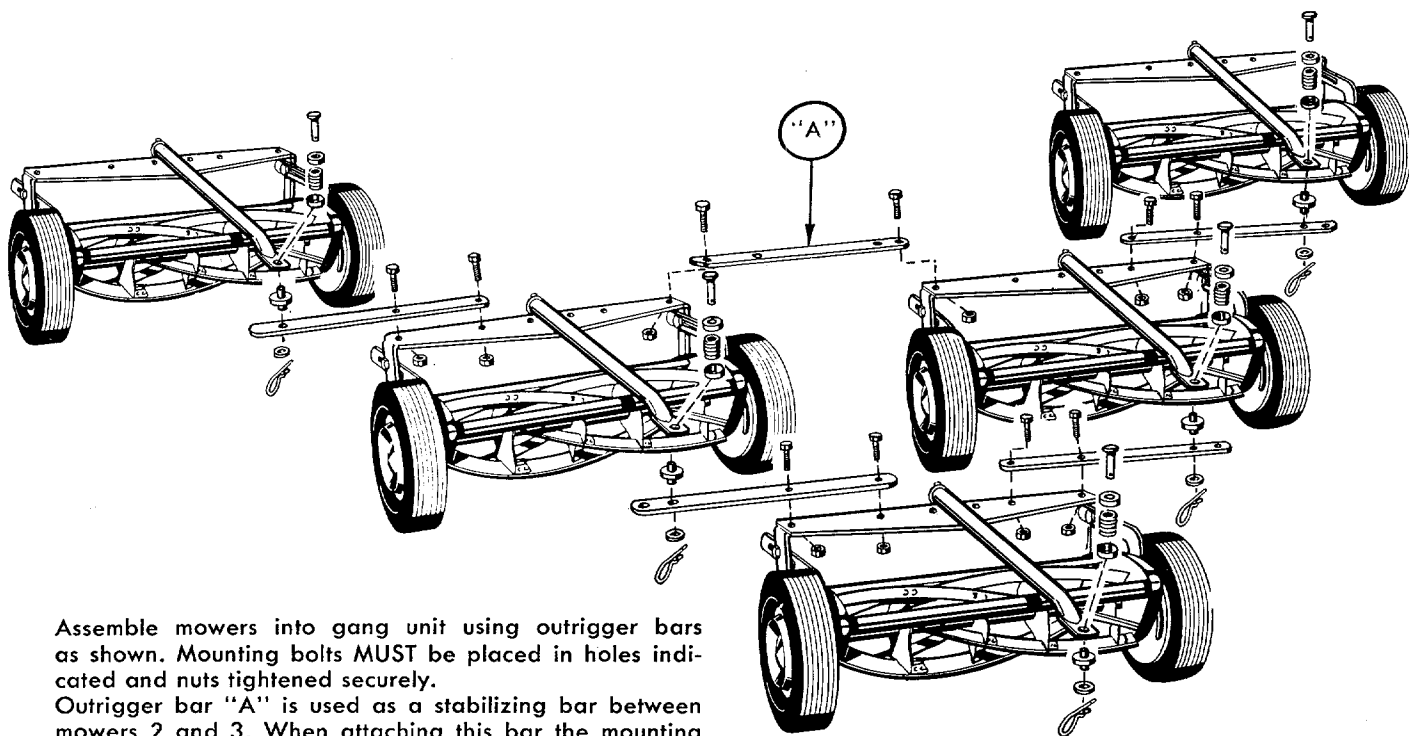
To return mower to mowing position, lift up on front spacer tube and press downwards at ends of transport brackets.

INSTRUCTIONS FOR ASSEMBLING THREE UNIT GANG



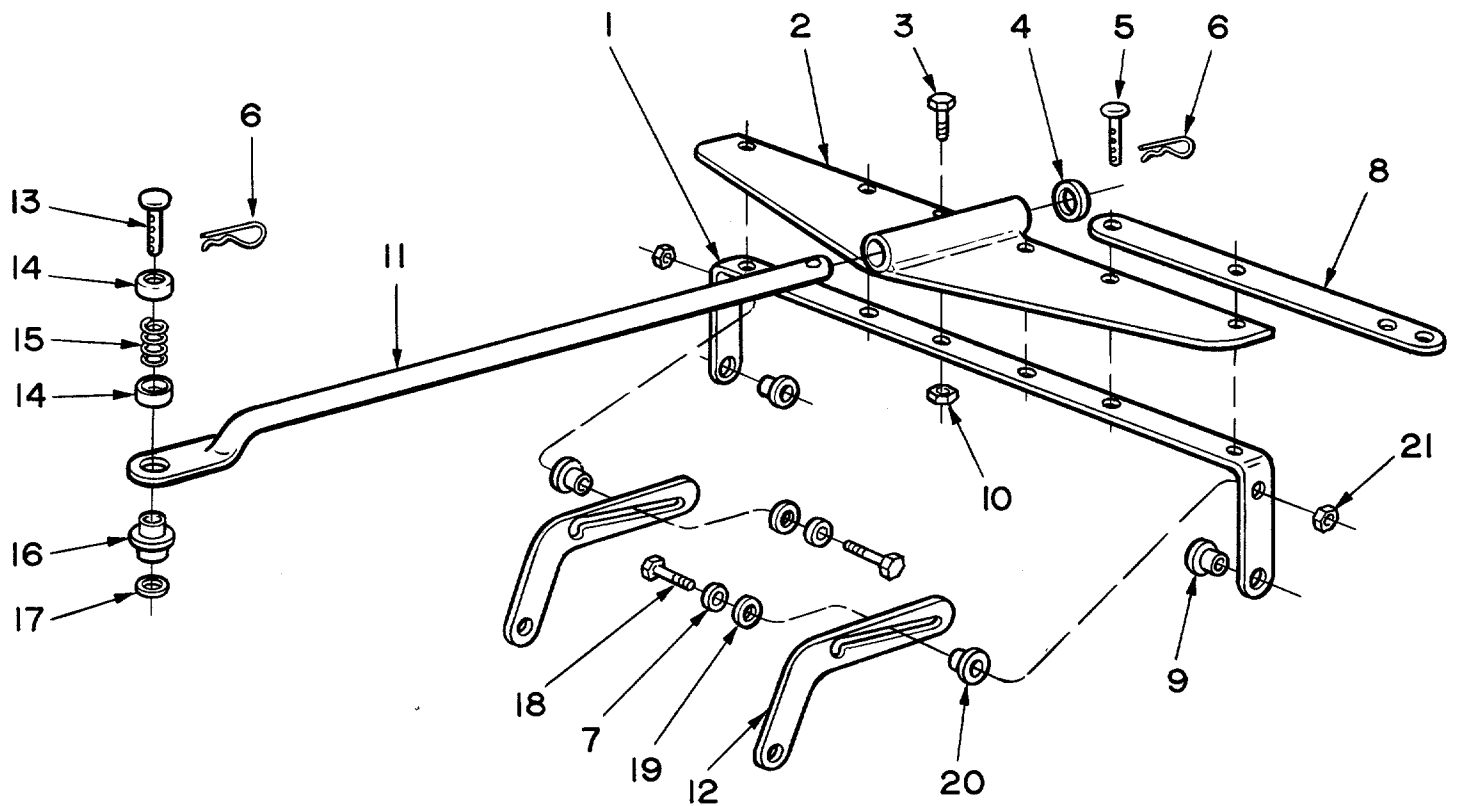
Assemble mowers into gang unit using outrigger bars as shown. Mounting bolts **MUST** be placed in holes indicated and nuts tightened securely. Keep additional clevis pins, springs, etc. for use as spare parts.

INSTRUCTIONS FOR ASSEMBLING FIVE UNIT GANG



Assemble mowers into gang unit using outrigger bars as shown. Mounting bolts **MUST** be placed in holes indicated and nuts tightened securely. Outrigger bar "A" is used as a stabilizing bar between mowers 2 and 3. When attaching this bar the mounting bolts **MUST** be placed in the end holes as shown. Tighten nuts securely then loosen each nut one full turn to permit bar to pivot. Keep additional clevis pins, springs, etc. for use as spare parts.

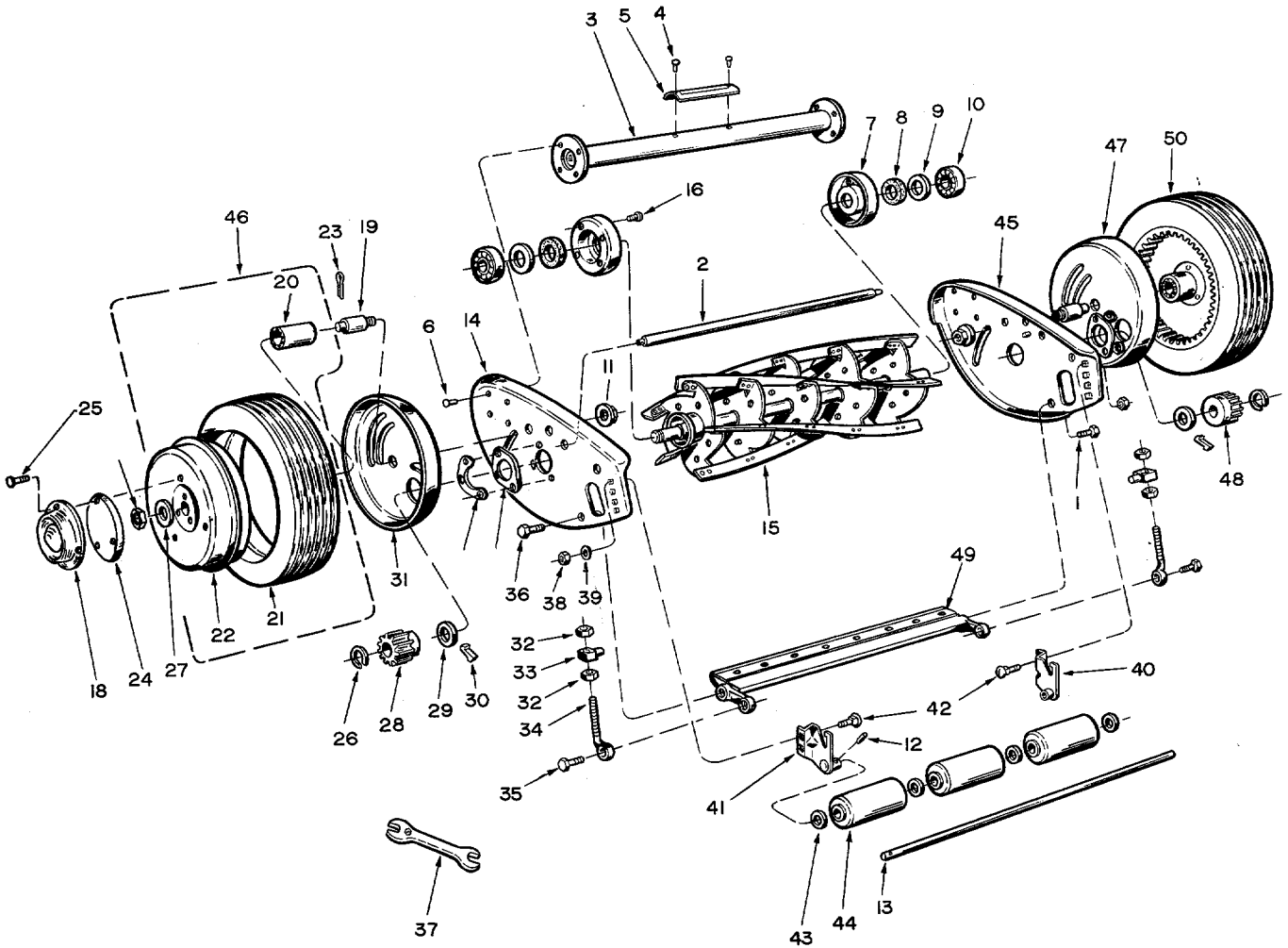
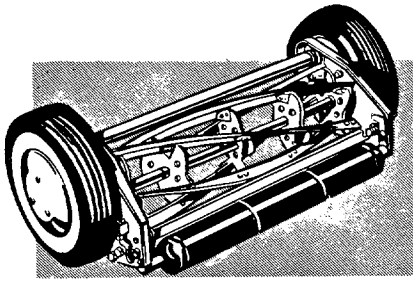
TRAILER HITCH



HITCH PARTS LIST

REF. NO.	PART NO.	DESCRIPTION	REF. NO.	PART NO.	DESCRIPTION
1	3698-3-55	Bridge	12	2609-217-55	Transport Bracket
2	3111-68-55	Tow Bar Plate Assembly	13	1545-8	Clevis Pin
3	1509-17	*Bolt (5/16 x 18 x 1)	14	41-035	Spring Cup
4	1540-58	Washer	15	41-036	Spring
5	41-042	Clevis Pin	16	1657-16	Bushing
6	1547-5	Cotter Pin	17	41-046	*Washer (11/32 x 7/8)
7	1552-8	Washer—Special	18	1513-45	Shoulder Bolt
8	1697-5-55	Outrigger Bar	19	141	Washer
9	1657-5	Spacer Bushing	20	1624-135	Spacer
10	1538-6	*Nut (5/16-18)	21	1538-8	*Nut—Hex (1/4-20 Lock)
11	3125-6-55	Tow Bar Assembly			

*Standard Hardware Item—Purchase Locally.



ALL UNNUMBERED PARTS
INTERCHANGEABLE WITH
OPPOSITE SIDE

For Parts List, See Page 7

MODEL 1020-6

TRAILER MOWER

All parts listed herein may be ordered through YARD-MAN, INCORPORATED
WHEN ORDERING REPAIR PARTS, ALWAYS GIVE THE FOLLOWING INFORMATION AS
SHOWN IN THIS LIST:

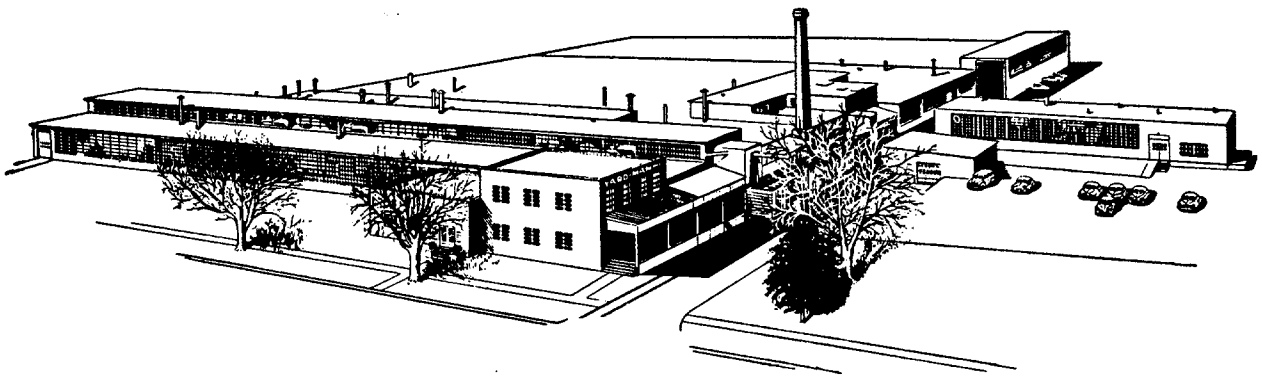
- | | |
|--------------------|---------------------|
| 1. The PART NUMBER | 3. The MODEL NUMBER |
| 2. The PART NAME | 4. The NAME of item |

Your Mower is right hand (R.H.) or left hand (L.H.) as you are seated on Mower.

PARTS LIST

REF. NO.	PART NO.	DESCRIPTION	REF. NO.	PART NO.	DESCRIPTION
1	1509-86	Screw (Front L.H. Thd. _____)	26	1650-21	*Retaining Ring _____
2	2624-110	Spacer-end Plate _____	27	141	*Washer (3/8 x 1 1/4) _____
3	1112-15	Spacer Tube Assembly—21" _____	28	428	Pinion Gear—L.H. _____
4	1020	*Screw (#6 x 1/4 Self Tap) _____	29	109	Felt Washer _____
5	1605-666	Name Plate _____	30	323	Pawl _____
6	1530-6	*Rivet (3/16 x 3/8 Rd. Hd.) _____	31	1118-14	Gear Housing—L.H. _____
7	1629-28	Retainer _____	32	52	*Nut (3/8-24 Semi Fin Hex) _____
8	104	Felt Washer _____	33	11	Trunnion _____
9	106	Felt Retainer _____	34	451	Bolt—Cutter Bar Adjusting _____
10	3	Bearing _____	35	453	Screw (Rear) _____
11	1137-3	Nut—Special _____	36	455	Screw (Front) R. H. Thd. _____
12	1548-7	Roll Pin _____	37	72	Wrench _____
13	1632-84	Roller Shaft _____	38	70	*Nut (3/8-18) _____
14	1129-180	End Plate Trunnions—L.H. _____	39	159	*Washer (5/16 x 5/8) _____
15	3135-36	Reel Assembly—21" _____	40	2132-45	Roller Bracket—R.H. _____
16	1530-20	*Rivet (3/16 x 13/32 Rd. Hd.) _____	41	2132-44	Roller Bracket—L.H. _____
17	1629-41	Retainer _____	42	2003	*Bolt (5/16-18 x 1 Carriage) _____
18	2674-27	Hub Cap _____	43	1540-59	*Washer (1/2 x 1-1/16) _____
19	1631-45	Axle _____	44	1658-12	Roller—3 Required _____
20	1652-52	Bearing _____	45	1129-181	End Plate with Trunnions—R.H. _____
21	2619-34	Tire _____	46	1108-95	Drive Wheel Assembly with Tire _____
22	1110-30	Drive Wheel—Less Tire _____	47	1118-13	Gear Housing—R.H. _____
23	1538-36	*Nut (3/8-16 Hex Lock) _____	48	425	Pinion Gear—R.H. _____
24	2718-3	Wheel Weight _____	49	3134-24	Cutter Bar Assembly _____
25	1511-29	*Screw (#10-32 x 1 1/4 Thd. Cutting)	50	1624-138	Spacer _____

*Standard Hardware Item—Purchase Locally.



**"You are cordially invited to visit
our plant at any time."**