

wright **STANDER**[®]

Parts List for the Wright Stander 32", 36", 42" and 48" WSS Mower
(For Serial Numbers **26288** and Higher Until Superseded)

Replace with newer revisions as they become available



© 2006 Wright Manufacturing, Inc. All rights reserved

Revised: 12/06

32", 36", 42" CUTTER DECKS

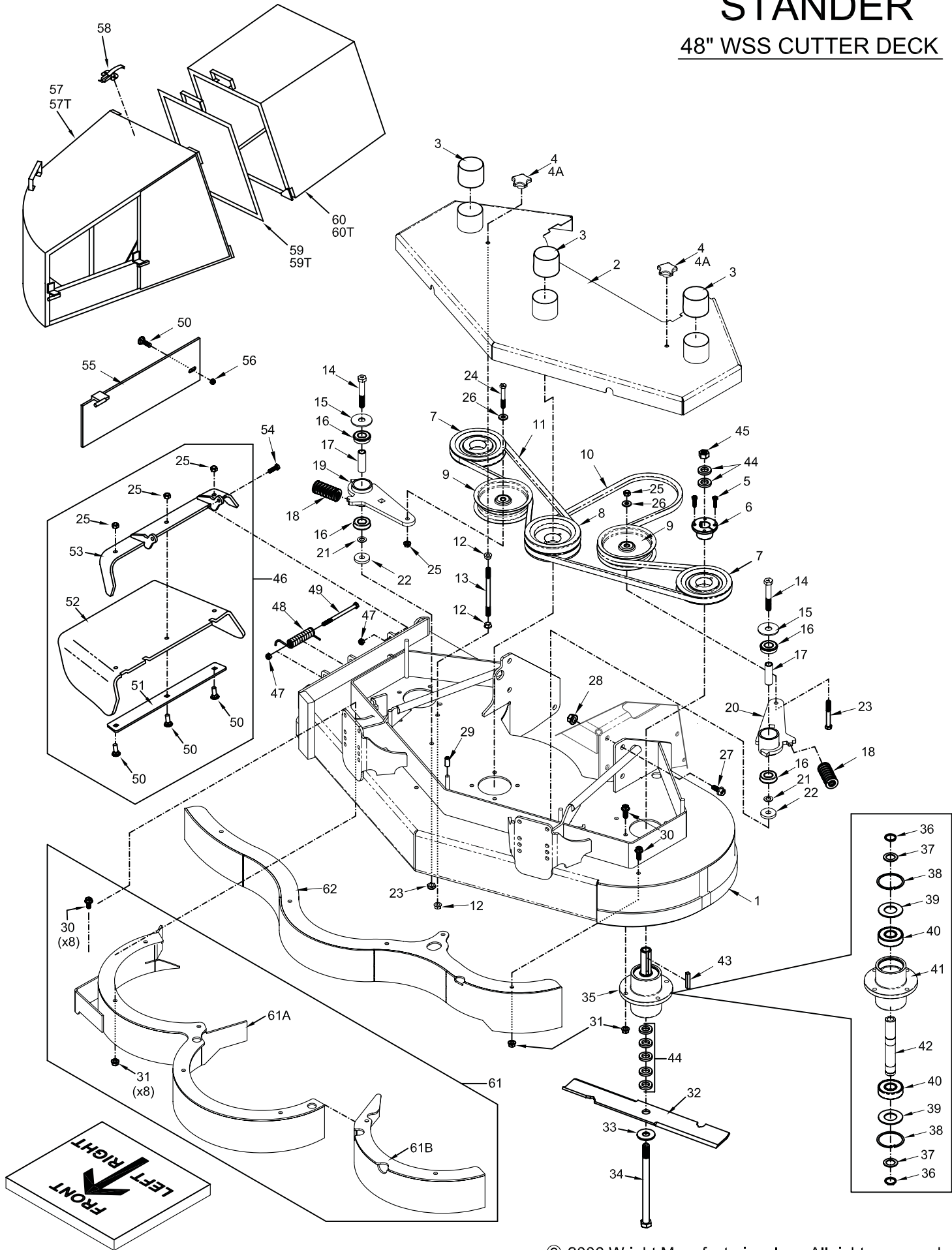
REF. #	DESCRIPTION	32"	36"	42"	PART #
1	32" CUTTER DECK W/ ISOL. CAPS (#13)	•			93460048
	36" CUTTER DECK W/ ISOL. CAPS (#13)		•		93470008
	42" CUTTER DECK W/ ISOL. CAPS (#13)			•	93480006
	32" REAR DISCHARGE CUTTER DECK W/ ISOL. CAPS	•			93460069
	36" REAR DISCHARGE CUTTER DECK W/ ISOL. CAPS		•		93470007
	42" REAR DISCHARGE CUTTER DECK W/ ISOL. CAPS			•	93480008
2	DECK COVER, WS 32	•			93460049
	DECK COVER, WS 36		•		93470009
	DECK COVER, WS 42			•	93480007
3	KNOB, DECK	•	•	•	18410006
	3/8-24 NYLOCK NUT (CE MODEL)	•	•	•	12990047
4	BOLT, HCS, 1/4-20X1 PLAIN	•	•	•	11990090
5	BUSHING, SPLIT TAPERED FOR PULLEY	•	•	•	71460008
6	PULLEY, SINGLE GRV 5.5"	•			71460060
	PULLEY, SINGLE GRV 6"		•		71460053
	PULLEY, SINGLE GRV 7"			•	71460055
7	PULLEY, SMALL IDLER	•	•		71460009
	PULLEY, LARGE IDLER, USE W/ 4x#10 & #61			•	71460098
8	BELT, WRAPPED	•			71460063
	BELT, WRAPPED		•		71460062
	BELT, WRAPPED			•	71460013
9	NUT, TOPLOCK 3/8-16	•	•	•	12990031
10	WASHER, FLAT USS 5/16 z	•	•		13990010
	WASHER, FLAT USS 3/8 x 1 1/2 z			•	13990041
11	NUT, LOCK FLANGE 3/8-24 Z	•	•	•	12990029
12	T-ROD	•	•	•	24460002
13	CAP, VINYL 1"	•	•	•	17460002
14	BOLT, HCS, 1/2-20X3.5 Z	•	•	•	11990089
15	WASHER, FENDER 5/16 X 1 1/4 Z	•	•	•	13990032
16	BEARING, BALL, FOR IDLER ARM	•	•	•	77410010
17	CIS BEARING BUSHING	•	•	•	25410003
18	SPRING, 2.5" DECK IDLER SPRING	•	•	•	16460009
19	IDLER ARM ASSEMBLY	•	•	•	98490007
20	BOLT, HEX 3/8-16 X 2 Z5	•	•		11990005
	BOLT, HEX 3/8-16 X 2 3/4 Z5			•	11990006
21	MACH BUSH, 1/2 ID X 7/8 OD X 18 GA	•	•	•	13990015
22	IDLER ARM WASHER	•	•	•	93490009
23	NUT, NYLOCK 1/2-20 Z	•	•	•	12990038
24	BOLT, FLANGE 1/2-13 X 1 1/4 Z5	•	•	•	11990015
25	NUT, LOCK FLANGE 1/2-13 Z	•	•	•	12990010
26	BOLT, FLANGE 3/8-16 X 1 Z8	•	•	•	11990046
27	NUT, LOCK FLANGE 3/8-16 Z	•	•	•	12990008
28	BLADE, 16 1/2"	•			71440002
	BLADE, 18"		•		71440001
	BLADE, 21"			•	71440003
29	WASHER, FLAT USS 5/8 Z	•	•	•	13990011
30	BOLT, HEX 5/8-11X 10 Z5	•	•	•	11990014
31	SPINDLE ASSEMBLY, SHORT	•	•	•	71460022
32	RETAINING RING, EXTERNAL (SMALL)	•	•	•	71460014
33	WASHER, SMALL FOR SPINDLE	•	•	•	71460021
34	RETAINING RING, INTERNAL (LARGE)	•	•	•	71460015
35	WASHER, SPINDLE	•	•	•	71460016
36	BEARING, SPINDLE (LARGE)	•	•	•	71460017
37	SPINDLE HOUSING	•	•	•	71460018
38	SPINDLE SHAFT, SHORT	•	•	•	71460025
39	MACHINE KEY 1/4 X 1/4 X 1	•	•	•	15990003
40	MACH BUSH 5/8 X 1 1/2 X 1/4 Z	•	•	•	13990007
41	NUT, HEX 5/8-11 Z	•	•	•	12990003
42	BOLT, CARRIAGE 3/8 X 1 Z5	•	•	•	11990016
43	FLEXIBLE CHUTE DEFLECTOR CLAMP PLATE	•	•	•	93460061
44	CHUTE DEFLECTOR, RUBBER	•	•	•	17460007
45	FLEXIBLE CHUTE DEFLECTOR FLANGE	•	•	•	93460060
46	BOLT, HEX 5/16-18 X 1 Z5	•	•	•	11990027
47	MULCHING BLOCK OFF PLATE, INCL HARDWARE	•	•	•	93460024
48	NUT, NYLOCK 3/8-16 Z	•	•	•	12990020
49	GRASS GOBBLER FOR WRIGHT (JUMBO)	•	•	•	WRJ300-3
50	LATCH	•	•	•	GGL1-1
51	DOOR (JUMBO SIZE)	•	•	•	GGD4-4
52	LEAF GOBBLER	•	•	•	LG1000
53	MULCH KIT, CURVED	•			95480003
	MULCH KIT, CURVED		•		95470002
	MULCH KIT, CURVED			•	95480002
54	CHUTE DEFLECTOR KIT, FLEXIBLE	•	•	•	95460004
55	BOLT, HEX 5/16-18 X 4 1/2 Z5	•	•	•	11990003
56	SPRING, TORSION FOR CHUTE DEFLECTOR	•	•	•	16460002
57	NUT, NYLOCK 5/16-18 Z	•	•	•	12990021
58	TUBE CLOSURE FOR DECK	•	•	•	17460004
59	REAR DISCHARGE BAFFLE	•	•		93470018
	REAR DISCHARGE BAFFLE			•	93480009
60	BOLT, HEX 5/16-18 X 3/4 Z5	•	•	•	11990028
61	BORE ADAPTER, 30MM X 41MM (FOR 42" ONLY)			•	22420006

48" WSS CUTTER DECK

REF. #	DESCRIPTION	PART #
1	CUTTER DECK W/ ISOL. CAPS (#29)	93430021
2	DECK COVER	93430020
3	CAP, VINYL 2 1/2, DECK COVER	17460001
4	KNOB, DECK	18410006
4A	3/8-24 NYLOCK NUT (CE MODEL)	12990047
5	BOLT, HCS, 1/4-20X1 PLAIN	11990090
6	BUSHING, SPLIT TAPERED FOR PULLEY	71460008
7	PULLEY, SINGLE GRV 5.5"	71460060
8	PULLEY, DOUBLE GRV 5.5"	71460061
9	PULLEY, SMALL IDLER, DECK	71460009
10	ENGINE-TO-BLADE BELT, WRAPPED	71460074
11	BLADE-TO-BLADE BELT, WRAPPED	71460070
12	NUT, LOCK FLANGE 3/8-24 Z	12990029
13	T-ROD, DECK COVER	24410001
14	BOLT, HCS, 1/2-20X3.5 Z	11990089
15	WASHER, FENDER 5/16 X 1 1/4 Z	13990032
16	BEARING, BALL, FOR IDLER ARM	77410010
17	CIS BEARING BUSHING	25410003
18	SPRING, 2.5" DECK IDLER SPRING	16460009
19	IDLER ARM ASSEMBLY, LEFT	93490013
20	IDLER ARM ASSEMBLY, RIGHT	93490014
21	MACH BUSH, 1/2 ID X 7/8 OD	13990015
22	IDLER ARM WASHER	93490009
23	NUT, NYLOCK 1/2-20 Z	12990038
24	BOLT, HEX 3/8-16 X 2 1/2 Z5	11990004
25	NUT, TOPLOCK 3/8-16	12990031
26	WASHER, FLAT USS 5/16 z	13990010
27	BOLT, FLANGE 1/2-13 X 1 1/4 Z5	11990015
28	NUT, LOCK FLANGE 1/2-13 Z	12990010
29	ISOLATION CAP, VINYL	17460002
30	BOLT, FLANGE 3/8-16 X 1 Z8	11990046
31	NUT, LOCK FLANGE 3/8-16 Z	12990008
32	BLADE, 16 1/2"	71440002
33	WASHER, FLAT USS 5/8 Z	13990011
34	BOLT, HEX 5/8-11X 10 Z5	11990014
35	SPINDLE ASSEMBLY	71460022
36	RETAINING RING, EXTERNAL (SMALL)	71460014
37	WASHER, SMALL FOR SPINDLE	71460021
38	RETAINING RING, INTERNAL (LARGE)	71460015
39	WASHER, SPINDLE	71460016
40	BEARING, SPINDLE (LARGE)	71460017
41	SPINDLE HOUSING	71460018
42	SPINDLE SHAFT	71460025
43	MACHINE KEY 1/4 X 1/4 X 1	15990003
44	MACH BUSH 5/8 X 1 1/2 X 1/4 Z	13990007
45	NUT, HEX 5/8-11 Z	12990003
46	CHUTE DEFLECTOR KIT, FLEXIBLE	95460004
47	NUT, NYLOCK 5/16-18 Z	12990021
48	SPRING, TORSION FOR CHUTE DEFLECTOR	16460002
49	BOLT, HEX 5/16-18 X 4 1/2 Z5	11990003
50	BOLT, CARRIAGE 3/8 X 1 Z5	11990016
51	FLEXIBLE CHUTE DEFLECTOR CLAMP PLATE	93460061
52	CHUTE DEFLECTOR, RUBBER	17460007
53	FLEXIBLE CHUTE DEFLECTOR FLANGE	93460060
54	BOLT, HEX 5/16-18 X 1 Z5	11990027
55	MULCHING BLOCK OFF PLATE, INCL HARDWARE	93460024
56	NUT, NYLOCK 3/8-16 Z	12990020
57	GRASS GOBBLER FOR WRIGHT (JUMBO)	WRJ300-3
57T	GRASS GOBBLER TURBO 10 FRONT	WRGGT10FRNT
58	LATCH	GGL1-1
59	DOOR (JUMBO SIZE)	GGD4-4
59T	DOOR (TURBO 10)	GGD-T10
60	LEAF GOBBLER	LG1000
60T	GRASS GOBBLER TURBO 10 REAR	WRGGT10REAR
61	MULCH KIT, CURVED	95430003
61A	MULCH BAFFLE, CURVED, RIGHT	93430013
61B	MULCH BAFFLE, CURVED, LEFT	93430014
62	DECK BAFFLE KIT, 48", W/ HARDWARE	95430005

STANDER

48" WSS CUTTER DECK

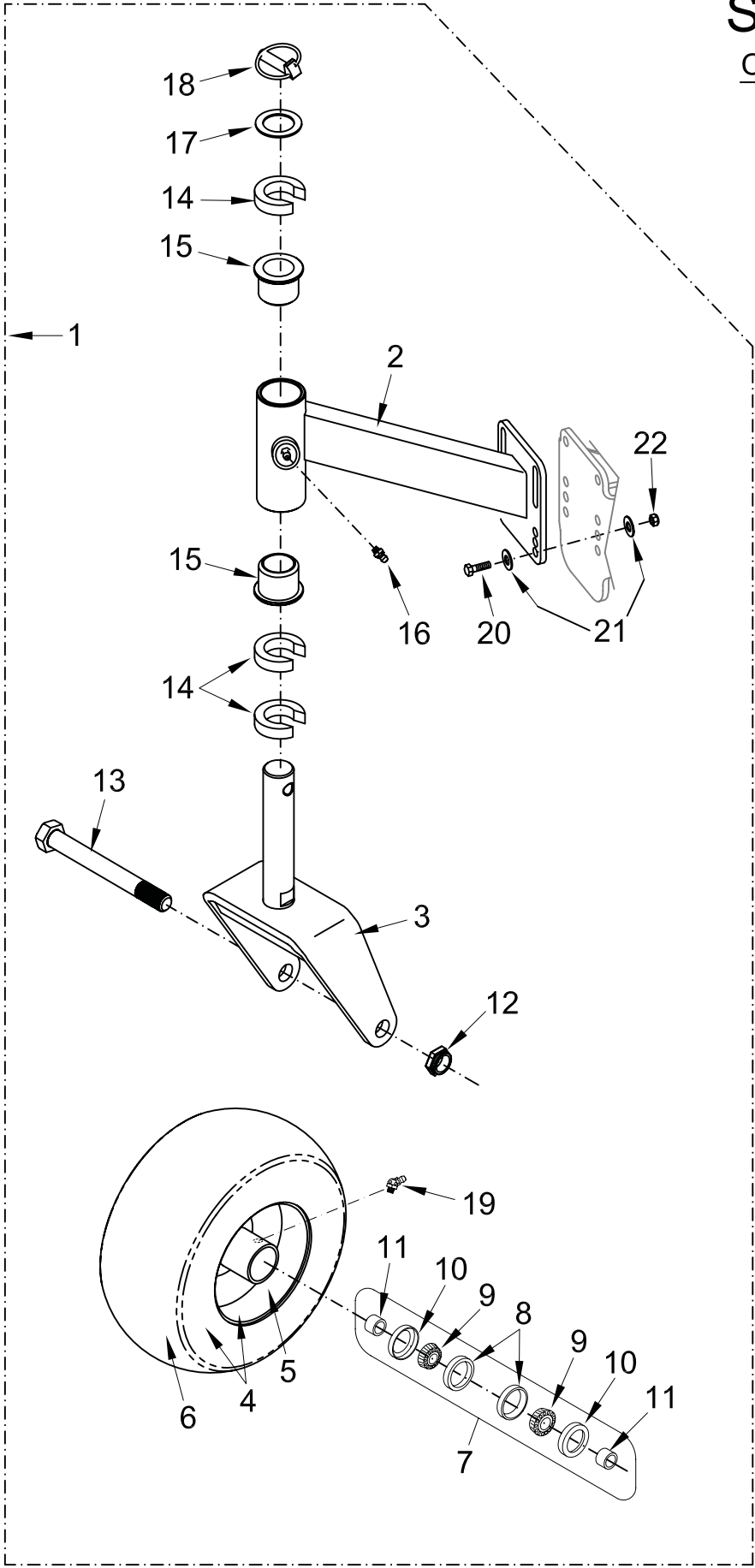


CASTER PARTS

REF. #	DESCRIPTION	PART #
1	L-S CASTER KIT W/O BRACKETS - SET OF 2	98460013
2	L-S CASTER ARM ASSEMBLY INCL #15x2, #16	98460016
3	L-S CASTER YOKE	93460008
4	PNEUMATIC WHEEL ASSEMBLY, 11X400-5 INCL #7, #19	72460002
	FLAT-FREE WHEEL ASSEMBLY, INCL #7, #19	72460012
5	RIM ONLY (FOR PNEUMATIC ASSY)	77460008
6	TIRE ONLY 11 X 400-5 (FOR PNEUMATIC ASSY)	77460009
7	BEARING KIT FOR 11X400-5 CASTER WHEEL	98460019
8	TAPERED ROLLER BEARING RACE	77460007
9	BEARING, FOR CASTER WHEELS	77460006
10	SEAL, FOR CASTER WHEELS	77460005
11	SPACER, FOR CASTER WHEELS	77460004
12	NUT, NYLOCK JAM 3/4-10 Z	12990026
13	BOLT, HEX 3/4-10 X 6 1/2 Z5	11990034
14	CASTER SPACER, NOTCHED C-TYPE	13990022
15	BUSHING, CASTER, FOR 1 1/4 PIN	14990003
16	ZERK, (GREASE FITTING)	15990006
17	MACH BUSH, 1 1/4 ID X 1 7/8 OD X 14 GA	13990023
18	LYNCH PIN FOR CASTERS	15990013
19	GREASE FITTING FOR WHEEL	VKWHLZERK
20	BOLT, HEX 3/8-16 X 1 1/4 Z5	11990032
21	WASHER, FLAT USS 5/16 z	13990010
22	NUT, NYLOCK 3/8-16 Z	12990020

STANDER

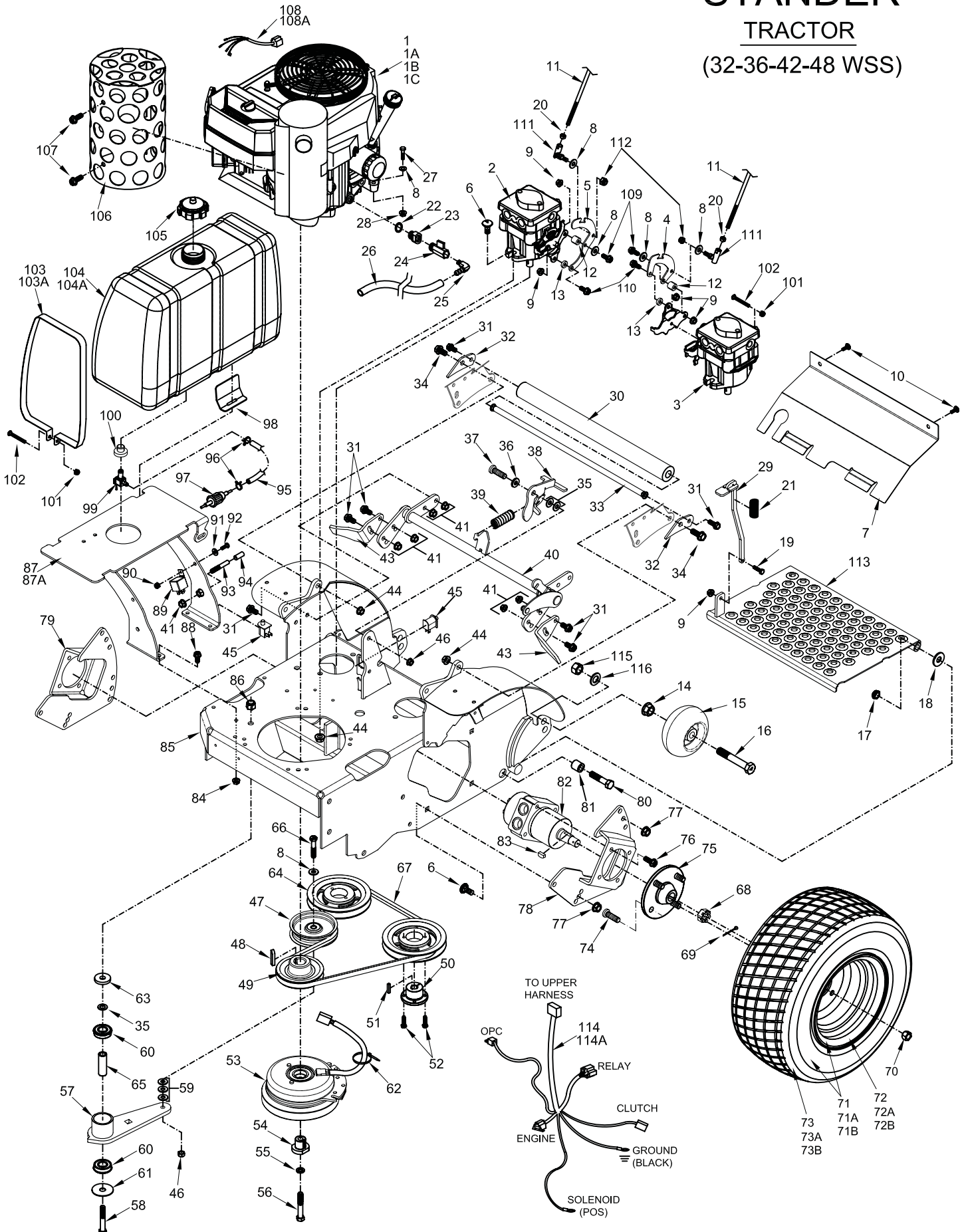
CASTER PARTS



TRACTOR

REF. #	DESCRIPTION	PART #	REF. #	DESCRIPTION	PART #
1	OBTAIN FROM AUTHORIZED ENGINE DEALER	N/A	65	CIS BEARING BUSHING	25410003
2	HYDRO PUMP-STANDER	31490005	66	BOLT, HEX 3/8-16 X 2 Z5	11990005
3	HYDRO PUMP-STANDER	31490004	67	BELT, WRAPPED	71460033
4	LEVER, PUMP CONTROL	93410098	68	OBTAIN FROM AUTHORIZED HYDRO-GEAR DEALER	N/A
5	LEVER, PUMP CONTROL	93410097	69	COTTER PIN 1/8 X 2	15990012
6	BOLT, CARRIAGE 7/16-14 X 1 Z5	11990017	70	NUT, LUG 1/2-20	72410001
7	PULLEY GUARD PLATE	93410105	71	WHEEL ASSEMBLY, 18X650-8 (32" DECK)	72410006
8	WASHER, FLAT 1/4 Z	13990009	71A	WHEEL ASSEMBLY, 18X850-8 (36", 42" DECK)	72410007
9	NUT, LOCK FLANGE 5/16-18 Z	12990007	71B	WHEEL ASSEMBLY, 18x800-10 (48" DECK)	72410036
10	SCREW, TRUSS HD MACH 1/4-20 X 3/4 SS	11990024	72	RIM ONLY FOR 18X650-8 (32" DECK)	72410010
11	T-ROD, PUMP CONTROL	24420012	72A	RIM ONLY FOR 18X850-8 (36", 42" DECK)	72410005
12	PUMP LEVER SPACER, 3/4"	93410164	72B	RIM ONLY FOR 18x800-10 (48" DECK)	72410035
13	PUMP LEVER SPACER, 3/8"	93410163	73	TIRE ONLY, 18X650-8 (32" DECK)	72410008
14	NUT, LOCK FLANGE 5/8-11 Z	12990050	73A	TIRE ONLY, 18X850-8 (36", 42" DECK)	72410009
15	WHEEL, PLASTIC, ANTI-SCALP	72490001	73B	TIRE ONLY, 18x800-10 (48" DECK)	72410023
16	BOLT, HCS, 5/8-11X4 1/2	11990110	74	STUD FOR TAPERED HUB	72410013
17	NUT, NYLOCK JAM 1/2-20 Z	12990018	75	WHEEL HUB, TAPERED	72410017
18	WASHER, FLAT USS 7/16 Z	13990002	76	BOLT, FLANGE 3/8-16 X 1 Z8	11990046
19	BOLT, HEX 1/4-20 X 1 Z5	11990069	77	NUT, LOCK FLANGE 7/16-14 Z	12990009
20	NUT, JAM, HEX 5/16-24 Z	12990053	78	WHEEL MOTOR SUPPORT, LEFT	93410101
21	SPRING, LRG COMPRESSION	16410002	79	WHEEL MOTOR SUPPORT, RIGHT	93410102
22	O-RING, FOR KAWASAKI OIL DRAIN ADAPT	35410024	80	BOLT, HEX 1/2-20 X 2 1/4 Z5	11990011
23	OIL DRAIN VALVE ADAPTER	35410018	81	FOOT PLATE PIVOT	96410002
24	OIL DRAIN VALVE	36410003	82	HYDRO MOTOR	32410004
25	FITTING, MALE BARB 1/2 - 90	36410005	83	WOODRUFF KEY 3/16 X 3/4	15990015
26	TUBE, OIL DRAIN	81410017	84	NUT, LOCK FLANGE 5/16-18 Z	12990007
27	BOLT, HEX 5/16-24 X 1 1/2 Z5	11990009	85	TRACTOR FRAME	93410103
28	NUT, LOCK FLANGE 5/16-24 Z	12990011	86	NUT, NYLOCK 1/2-20 Z	12990038
29	OPC ACTUATOR	93410085	87	FUEL TANK STAND, WS 32"	93410106
30	FOAM TUBE FOR PUMP GUARD	17420006	87A	FUEL TANK STAND, WS 36-48"	93410096
31	BOLT, FLANGE 3/8-16 X 3/4 Z5	11990030	88	BOLT, HEX 5/16-18 X 3/4 Z5	11990028
32	PAD BAR LINK	93410162	89	RELAY, FOR MAIN HARNESS	53490019
33	HYDRO PUMP GUARD BAR	91410024	90	NUT, NYLOCK 10-32	12990016
34	BOLT, FLANGE 7/16-14 X 1 1/4 Z5	11990093	91	WASHER, FLAT SAE #10 Z	13990003
35	MACH BUSH, 1/2 ID X 7/8 OD X 18 GA	13990015	92	SCREW, PHLPS PAN 10-32 X 3/4 Z	11990042
36	MACH BUSH, 1/2 ID X 14 GA	13990035	93	T-STUD	24420010
37	BOLT, SHLDR ALLEN 1/2 X 3/8	11990075	94	CAP, VINYL 1"	17460002
38	LEVER, PUMP LOCK	93420041	95	HOSE, FUEL	42420001
39	SPRING, DECK COG	16410008	96	HOSE CLAMP, 1/4	43410001
40	BRAKE, LATERAL LINK BAR	93410099	97	FUEL FILTER	34490003
41	NUT, LOCK FLANGE 3/8-16 Z	12990008	98	FUEL TANK PROTECTOR PLATE FOR TWO BLADE DECK	91410004
42	NUT, NYLOCK 1/4-20 Z	12990019	99	VALVE, BALL 90 FOR FUEL TANK	41410004
43	BRAKE SHOE, FOR 32", 36" & 42"	93410007	100	BUSHING FOR FUEL TANK VALVE	41410003
	BRAKE SHOE, FOR 48"	93410215	101	NUT, LOCK FLANGE 1/4-20 Z	12990006
44	NUT, LOCK FLANGE 7/16-14 Z	12990009	102	SCREW, ROUND PHLP 1/4-20 X 2 Z	11990025
45	SWITCH, BLACK OPC	52410003	103	FUEL TANK STRAP, 36", 42" AND 48"	91410002
46	NUT, TOPLOCK 3/8-16	12990031	103A	FUEL TANK STRAP FOR 32" ONLY	91410001
47	PULLEY, IDLER 4 1/2	71460006	104	FUEL TANK	41410005
48	MACHINE KEY 1/4 X 1/4 X 1	15990003	104A	FUEL TANK, 32" STANDER	41410011
49	PULLEY, 4.5 OD	71410002	105	FUEL TANK CAP W/ ADV VENT	41410002
50	BUSHING SPLIT TAPERED	71460051	106	MUFFLER GUARD - (CE ONLY)	91410014
51	MACHINE KEY 5MM X 5MM X 25MM	15990004	107	BOLT, FLANGE 3/8-16 X 3/4 Z5	11990030
52	BOLT, HCS, 1/4-20X1 PLAIN	11990090	108	HARNESS, ENGINE KAW (RECOIL/ELECTRIC)	53490017
53	CLUTCH / BRAKE SMALL	71410014	108A	HARNESS, ENGINE KAW (RECOIL ONLY)	53490014
54	SPACER, FOR CLUTCH	71410007	109	BOLT, HEX 5/16-18 X 1 3/4 Z5	11990044
55	WASHER, LOCK 7/16 Z	13990014	110	BOLT, HEX 5/16-18X1 1/4 Z5	11990065
56	BOLT, HEX 7/16-20 X 2 3/4 Z5	11990010	111	ROD END, BALL JOINT - RIGHT HAND THREAD	77410008
57	IDLER ARM	93490012	112	NUT, NYLOCK, 5/16-24 Z	12990051
58	BOLT, HCS, 1/2-20X3.5 Z	11990089	113	OPERATOR PLATFORM	93410021
59	WASHER, FLAT USS 5/16 z	13990010	114	RECOIL LOWER HARNESS	53490016
60	BEARING, BALL, FOR IDLER ARM	77410010	114A	RECOIL/ELECTRIC LOWER HARNESS	53490005
61	WASHER, FENDER 5/16 X 1 1/4 Z	13990032	115	5/8-11 TOPLOCK NUT	12990056
62	CABLE TIE	15990014	116	5/8 X 1 3/8 FLAT WASHER	13990037
63	IDLER ARM WASHER	93490009			
64	PULLEY, SINGLE GRV 5.75"	71460005			

STANDER TRACTOR (32-36-42-48 WSS)

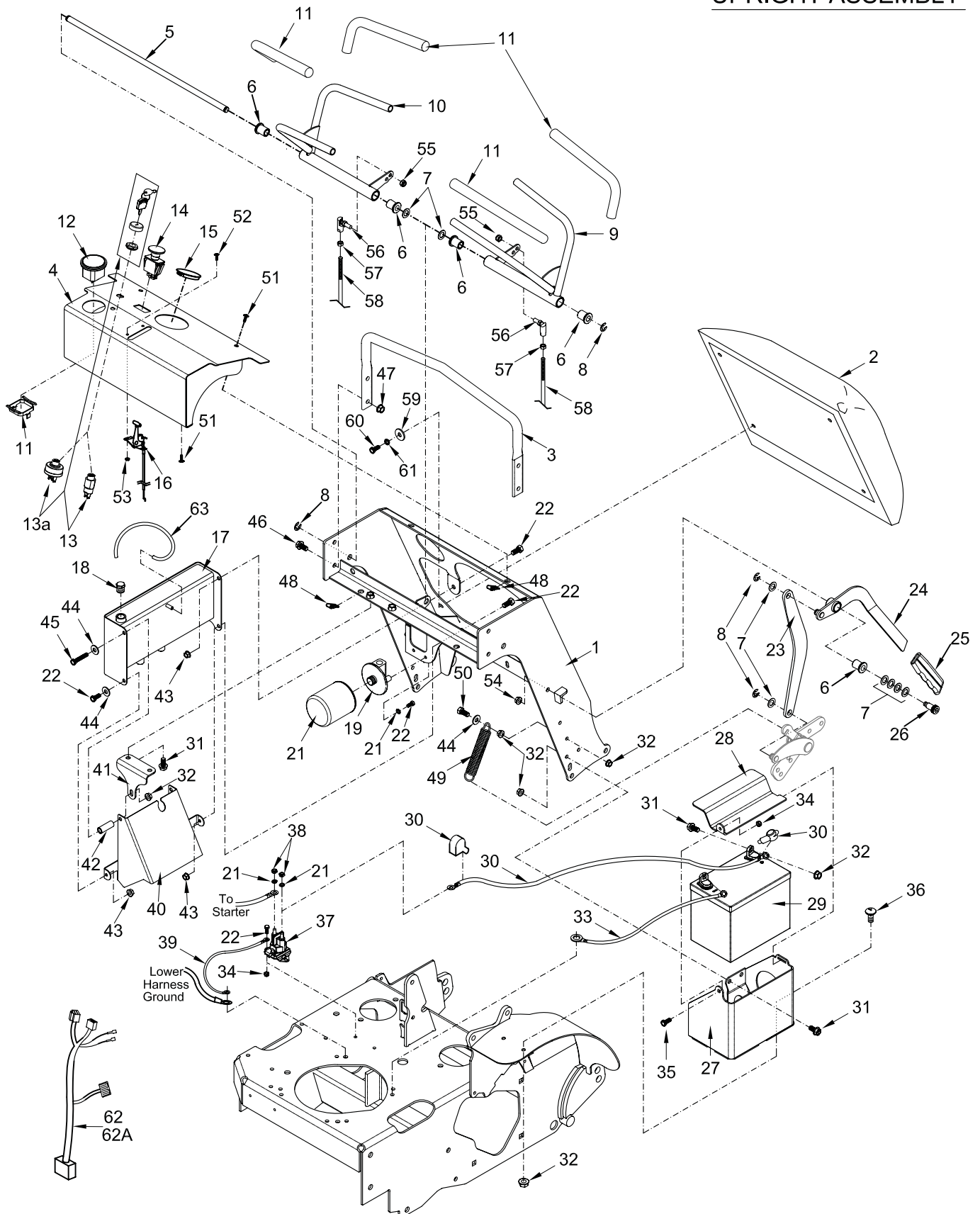


UPRIGHT ASSEMBLY

REF. #	DESCRIPTION	PART #
1	UPRIGHT WELDMENT	93420038
2	CUSHION, THIGH REST	98420002
3	STATIONARY HANDLEBAR	93420007
4	INSTRUMENT PANEL	93420006
5	GROOVE PIN, 1/2	22420002
6	HBUSH SHORT	14990004
7	MACH BUSH, 1/2 ID X 7/8 OD	13990015
8	E-CLIP	15990009
9	CONTROL LEVER ASSEMBLY, LEFT, INCL #11x2 & #6x2	98420044
10	CONTROL LEVER ASSEMBLY, RIGHT, INCL #11x2 & #6x2	98420045
11	GRIP, HANDLE BAR 11"	17420004
12	HOUR METER	54420001
13	IGNITION SWITCH, FOR ELECTRIC START	20420002
13a	IGNITION SWITCH, FOR RECOIL START	20420001
14	SWITCH, BLADE ON/OFF, RED	52420003
15	PLUG, PANEL, BLACK	17420001
16	THROTTLE CABLE	52420002
17	HYDRO TANK	91420007
18	PLUG, STEEL	35410015
19	HYDRO OIL FILTER HOUSING BLOCK	34490001
20	HYDRO OIL FILTER	34490002
21	WASHER, LOCK 1/4 Z	13990020
22	BOLT, HEX 1/4-20 X 5/8 Z5	11990001
23	BRAKE, PUSH BAR	93410100
24	BRAKE HANDLE W/ GRIP & BUSHING	98420003
25	HANDLE GRIP FOR BRAKE	17420003
26	BOLT, SHLDR ALLEN 1/2 X 1 1/4	11990021
27	BATTERY BOX WELDMENT	93420039
28	BATTERY BOX COVER	93420042
29	OBTAIN FROM AUTHORIZED DEKA BATTERY DEALER	56410001
30	CABLE, BATTERY, RED 38" W/ LUG INSUL.	53490010
31	BOLT, FLANGE 5/16-18 X 3/4 Z5	11990012
32	NUT, LOCK FLANGE 5/16-18 Z	12990007
33	CABLE, BATTERY, BLACK 18 1/2"	53490011
34	NUT, NYLOCK 1/4-20 Z	12990019
35	BOLT, HEX 1/4-20 X 1 Z5	11990069
36	BOLT, CARRIAGE 5/16-18 X 3/4 Z5	11990059
37	SOLENOID	53490009
38	NUT, JAM 1/4-20 Z	12990042
39	WIRE, GROUNDING	53490007
40	HYDRO OIL COOLER SHIELD	93410104
41	HYDRO TANK END SUPPORT	91420009
42	HYDRO TANK END SUPPORT SPACER	91420011
43	NUT, LOCK FLANGE 1/4-20 Z	12990006
44	WASHER, FLAT 1/4 Z	13990009
45	BOLT, HEX 5/16-18 X 2 1/2 Z5	11990100
46	BOLT, FLANGE 3/8-16 X 3/4 Z5	11990030
47	NUT, LOCK FLANGE 3/8-16 Z	12990008
48	NUT, U 1/4-20	12990012
49	SPRING, EXT	16410009
50	BOLT, HEX 5/16-18X1 1/4 Z5	11990065
51	SCREW, TRUSS HD MACH 1/4-20 X 3/4 SS	11990024
52	SCREW, TRUSS HD MACH 10-32 X 1/2	11990023
53	NUT, KEP 10-32 Z	12990015
54	NUT, TOPLOCK 3/8-16	12990031
55	NUT, NYLOCK, 5/16-24 Z	12990051
56	ROD END, BALL JOINT - LEFT HAND THREAD	77410009
57	NUT, LH JAM 5/16-24 Z	12990052
58	T-ROD, PUMP CONTROL	24420012
59	WASHER, FLAT USS 5/16 z	13990010
60	BOLT, HEX 5/16-18 X 1 Z5	11990027
61	WASHER, FENDER 5/16 X 1 1/4 Z	13990004
62	RECOIL UPPER HARNESS	53490015
62A	RECOIL/ELECTRIC UPPER HARNESS	53490033
63	HYDRO TANK BREATHER VENT	33410046

STANDER

UPRIGHT ASSEMBLY

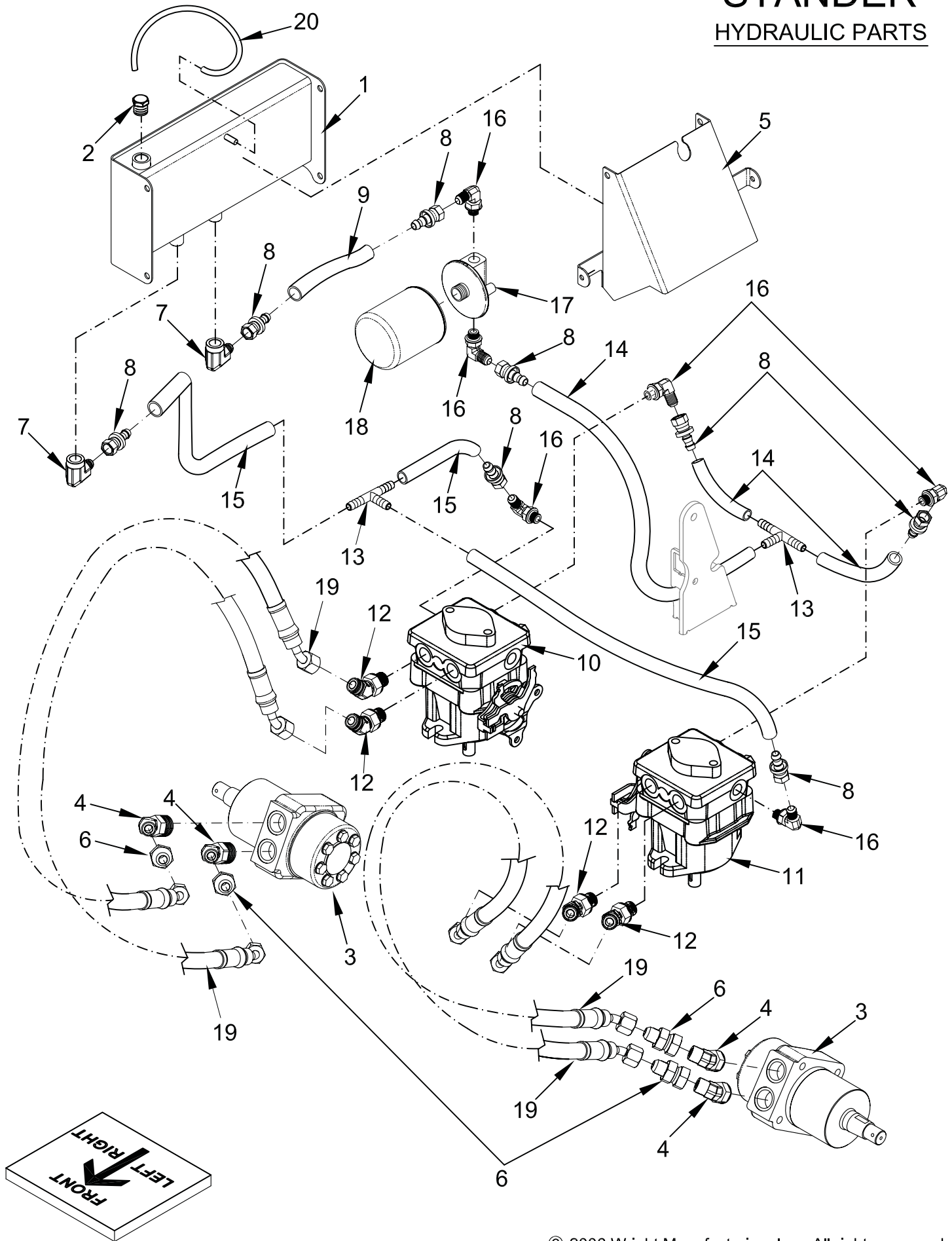


HYDRAULIC PARTS

REF. #	DESCRIPTION	PART #
1	HYDRO TANK WELDMENT	91420007
2	PLUG, STEEL	35410015
3	HYDRO MOTOR	32410004
4	ELBOW, 45 DEGREE	35410045
5	HYDRO OIL COOLER SHIELD	93410104
6	STRAIGHT, MJIC X FJIC	35410044
7	FITTING, FPIPE X MALE JIC ELBOW	35410026
8	FITTING, BARBTITE FEMALE	35410012
9	HOSE, HYDRO LOW, SMST, TNK-FLTR	33410058
10	HYDRO PUMP	31490005
11	HYDRO PUMP	31490004
12	CONNECTOR, STRGHT THRD ORING	35410046
13	TEE, NYLON HOSEBARB MALE	35410001
14	HOSE, HYDRO LOW, SMST, FLTR-PUMP	33410059
15	HOSE, HYDRO LOW, SMST, PUMP-TNK	33410060
16	ELBOW, STRGHT THRD ORING X JIC	35410007
17	HYDRO OIL FILTER HOUSING BLOCK	34490001
18	HYDRO OIL FILTER	34490002
19	HOSE, HYDRO HIGH PRESS, SM ST	33410061
20	HYDRO TANK BREATHER VENT	33410046

STANDER

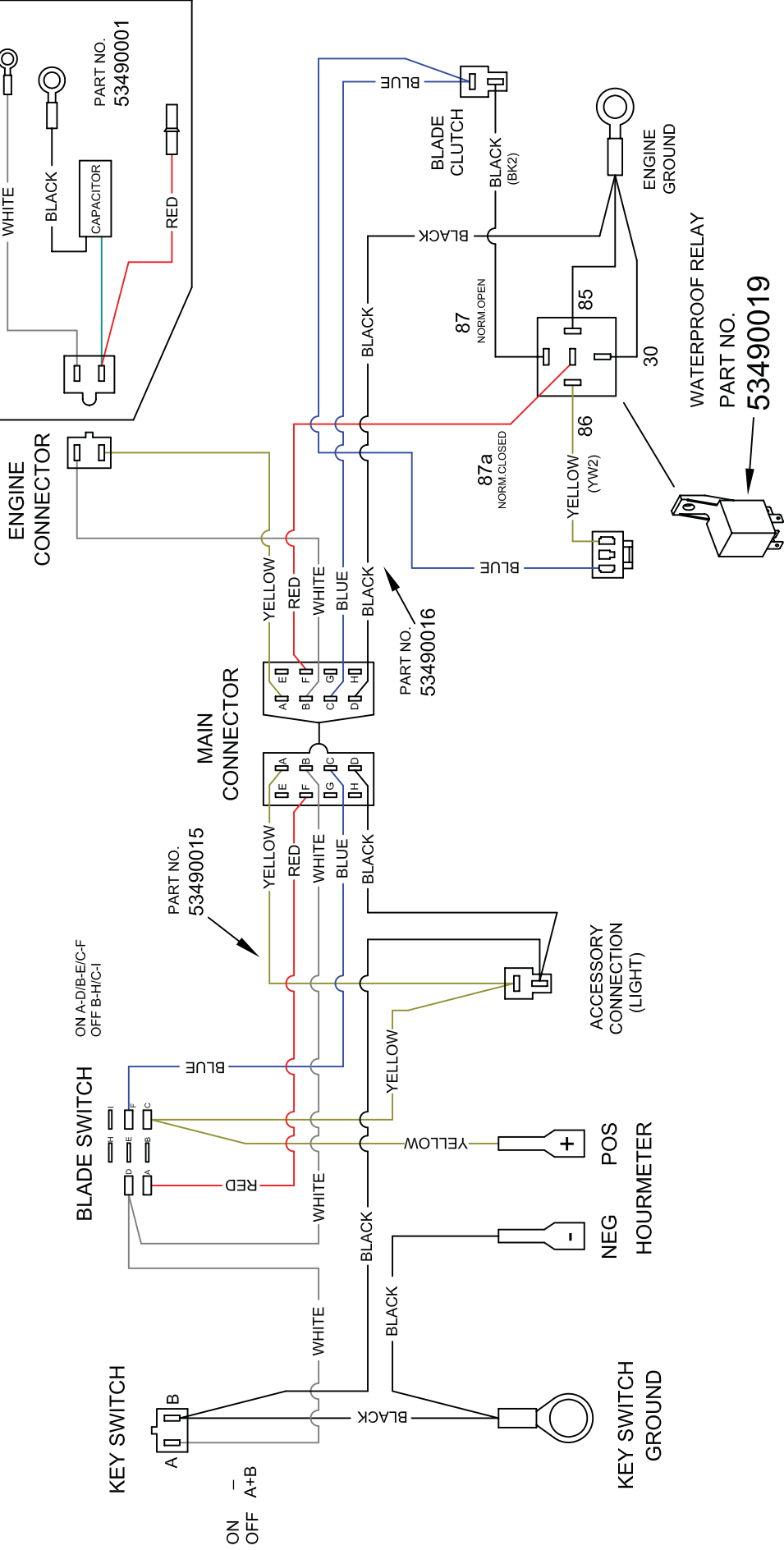
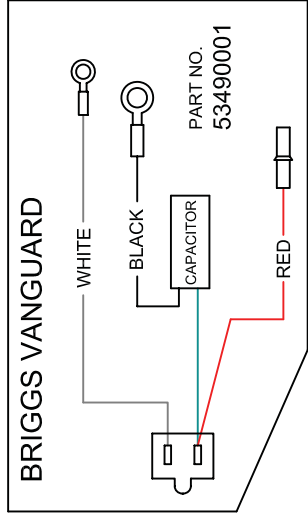
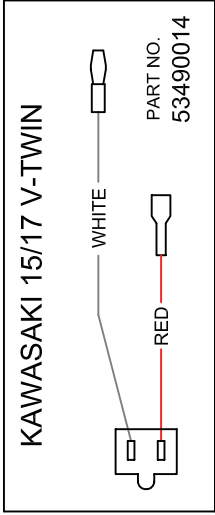
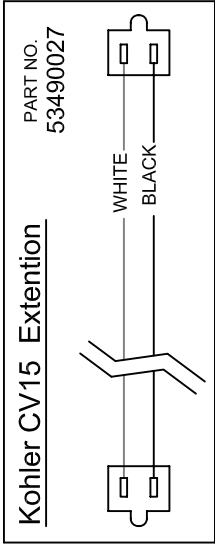
HYDRAULIC PARTS



STANDER

RECOIL START ONLY WIRE HARNESSES

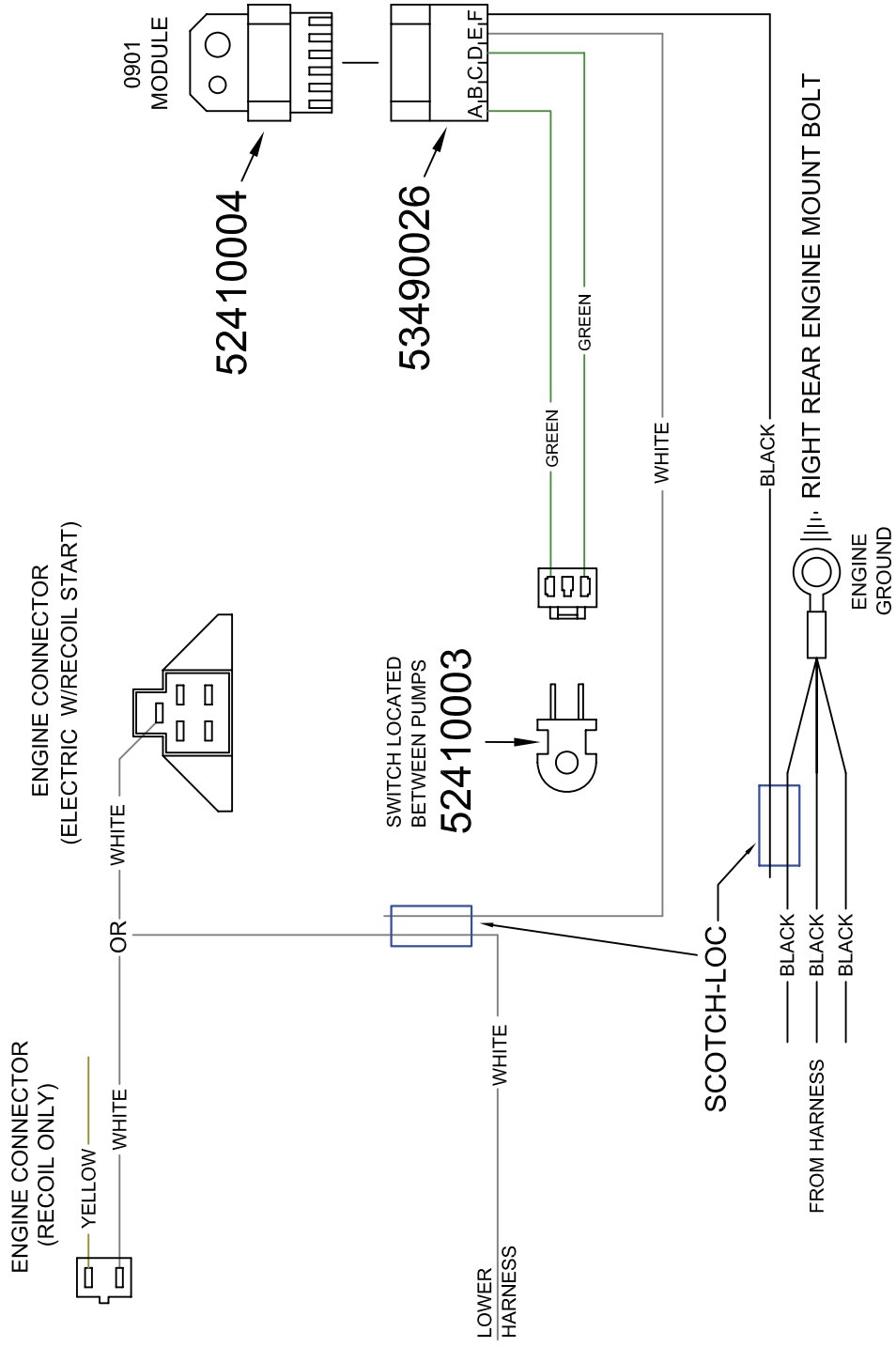
NOTE: SHOWING WIRE SIDE OF CONNECTORS



STANDER

ELECTRIC AND RECOIL/ELECTRIC CE WIRING ADAPTATION

NOTE: SHOWING WIRE SIDE OF CONNECTORS





1



2



3



4



5 (Qty.3)

32

6

36

7

42

8

48

9



10 (Qty.2)



11



12



13 (Qty.2)



14



15



16



17



18



19 (Qty.2)



20



21



22

1	76490004	Decal, Stander
2	76490013	Decal, Main Inst. Panel, Dash
3	76490005	Decal, Throttle / Instructions
4	76490051	Decal, Commercial Benefits
5	76490023	Decal, Circle with "W"
6	76490027	Decal, 32" Deck Size
7	76490015	Decal, 36" Deck Size
8	76490016	Decal, 42" Deck Size
9	76490008	Decal, 48" Deck Size
10	76490018	Decal, Speed Sensitivity Adj.
11	76410001	Decal, All Logos
12	76490036	Decal, Patent Numbers

13	76460001	Decal, Danger Blade Hazard
14	76490001	Decal, Shield Missing
15	76490017	Decal, Choke
16	76490030	Decal, CE, Main Inst. Panel, Dash
17	76490031	Decal, CE, Throttle / Instructions
18	76490053	Decal, CE, Parking Brake
19	76490028	Decal, CE, Danger Blade Hazard
20	76490029	Decal, CE, Shield Missing
21	76490045	Decal, CE, Noise 100 dB
22	76490058	Decal, CE, Hearing Protection



4600X Wedgewood Blvd
Frederick, MD 21703
www.wrightmfg.com