



# TWR-180 TWR-120 ROTARY CUTTER

Published 2006-06-29

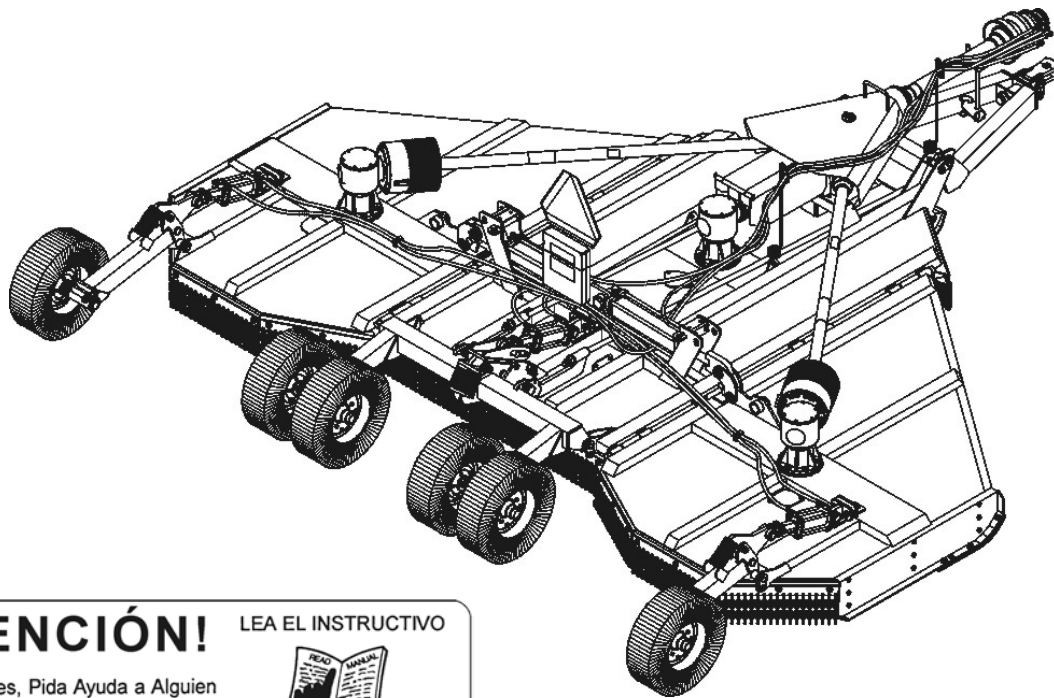
Serial #C31400382705-C31400552806 Inclusive  
Serial #C31500030705-C31500039806 Inclusive

Part No. C314TG010P

## PARTS MANUAL



An Operators Manual with **IMPORTANT** Safety, Assembly, Operation and Maintenance information was packaged with this Parts Manual during final inspection at the factory. If the Operators Manual is missing at any time, please contact Tiger Corporation to receive your free replacement manual.



### ATENCIÓN!

LEA EL INSTRUCTIVO

Si No Lee Ingles, Pida Ayuda a Alguien  
Que Si Lo Lea Para Que le Traduzca las  
Medidas de Seguridad.



Tiger Corporation

3301 N. Louise Ave.  
Sioux Falls, SD 57107  
1-800-843-6849  
1-605-336-7900  
www.tiger-mowers.com



© 2006 Alamo Group Inc.

## PARTS ORDERING GUIDE

The following instructions are offered to help eliminate delay and error in processing purchase orders for the equipment in this section.

1. The Purchase Order must include the name and address of the person or organization ordering the parts, who should be charged, and if possible, the serial number of the machine for which the parts were ordered.
2. The Purchase Order must clearly list the quantity of each part, the complete and correct part number, and the description of the part.
3. The Manufacturer reserves the right to substitute parts where applicable.
4. The Manufacturer reserves the right to change prices without prior notice.

**NOTE:** Please refer to the Safety Section in the front of the Operators Manual for the proper Part Number when ordering Replacement Safety Decals. Safety decals are available free of charge from the Manufacturer.

**NOTE:** If the Operators Manual does not accompany this Parts Manual please obtain one, free of charge from the Manufacturer. DO NOT operate this implement unless you READ, UNDERSTAND, and FOLLOW the Safety and Operation instructions contained in the Operators Manual

**NOTE:** Please note that the appearance of some parts may vary from the artwork shown in the Manual.



For maximum safety and to guarantee optimum product reliability, always use genuine OEM Parts. The use of inferior replacement parts may cause premature or catastrophic failure which could result in serious injury or death. Direct any questions regarding parts to:

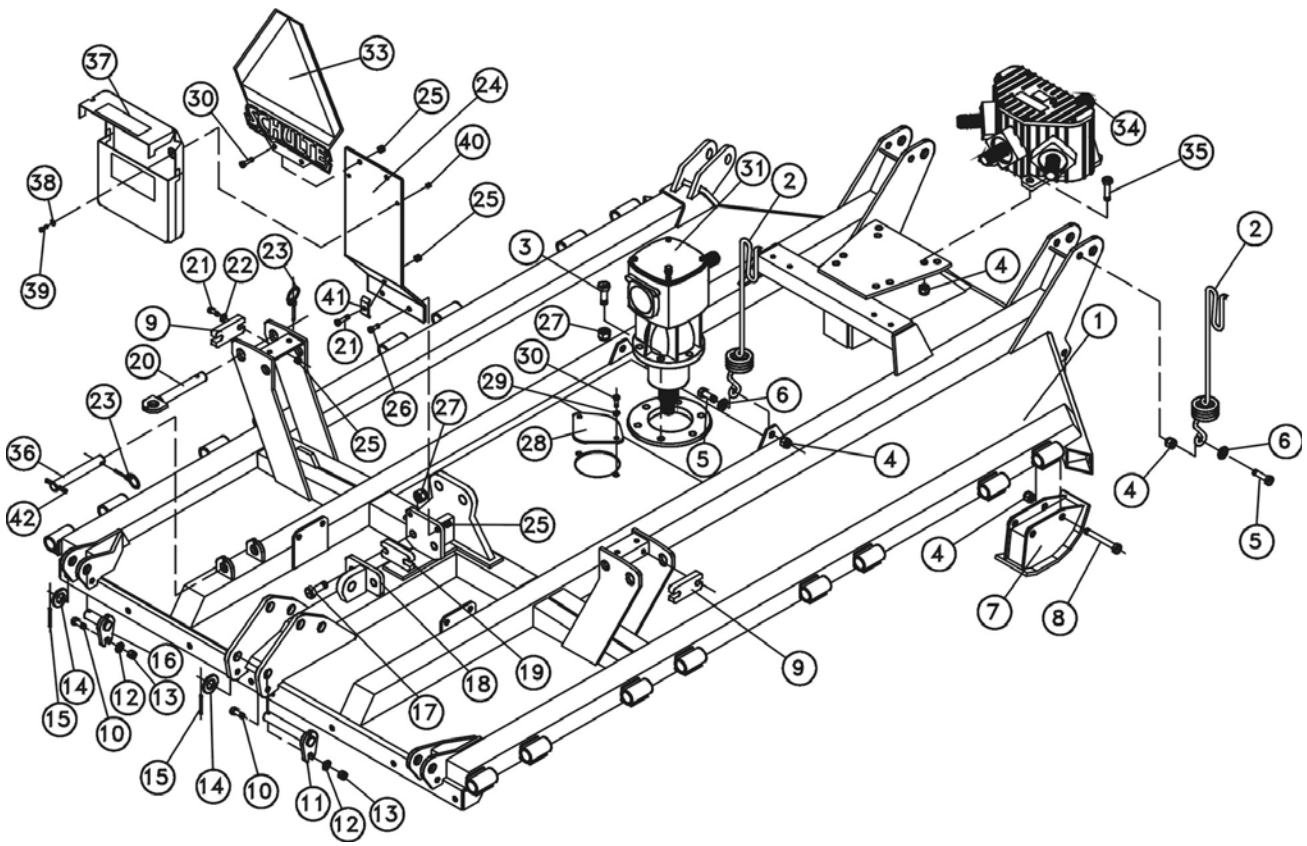
**Tiger Corporation**  
3301 N. Louise Ave.  
Sioux Falls, SD 57107  
1-800-843-6849  
1-605-336-7900  
[www.tiger-mowers.com](http://www.tiger-mowers.com)



## TABLE OF CONTENTS

CENTER SECTION FRAME .....	-3-
WING FRAME, RIGHT .....	-5-
WING FRAME, LEFT .....	-7-
HITCH FRAME AND CENTER WHEEL STANDARD .....	-9-
10' SKIRT ASSEMBLY .....	-11-
HITCH JACK, 15" SIDE WIND (232-800) .....	-12-
HUB, AXLES & TIRES .....	-13-
DRIVELINE SHIELDING .....	-15-
CHAIN GUARDS .....	-17-
BLADE CARRIERS .....	-19-
WING WINCH KIT (C312-300) .....	-21-
WING LIFT CIRCUIT, SINGLE ACTING .....	-22-
WING LIFT CYLINDER, MONARCH (100-3701) .....	-23-
PHASING CIRCUIT .....	-24-
PHASING CYLINDERS, MONARCH .....	-25-
SPOOL VALVE KIT, S150 (C301-805) .....	-26-
SPOOL VALVE KIT, S100 (C302-805) .....	-28-
TRACTOR UNIVERSAL JOINT W/ 80° C.V., SIZE 8 (340-850) .....	-29-
TRACTOR UNIVERSAL JOINT W/ 80° C.V., SIZE 6 (340-648) .....	-31-
WING UNIVERSAL JOINT, SIZE 6 (340-6013) .....	-33-
CENTER UNIVERSAL JOINT, SIZE 6 .....	-35-
SLIP CLUTCH (341-6322, 341-6323) .....	-36-
SLIP CLUTCH (341-6324) .....	-38-
DIVIDER GEARBOX .....	-39-
CW GEARBOX, WING (330-7030) .....	-41-
CCW GEARBOX, WING (330-7031) .....	-43-
CW GEARBOX, CENTER, 540 RPM (330-7035) .....	-45-
CW GEARBOX, CENTER, 1000 RPM (330-7036) .....	-47-
TRANSPORT KITS .....	-49-
PARTS INDEX .....	-50-

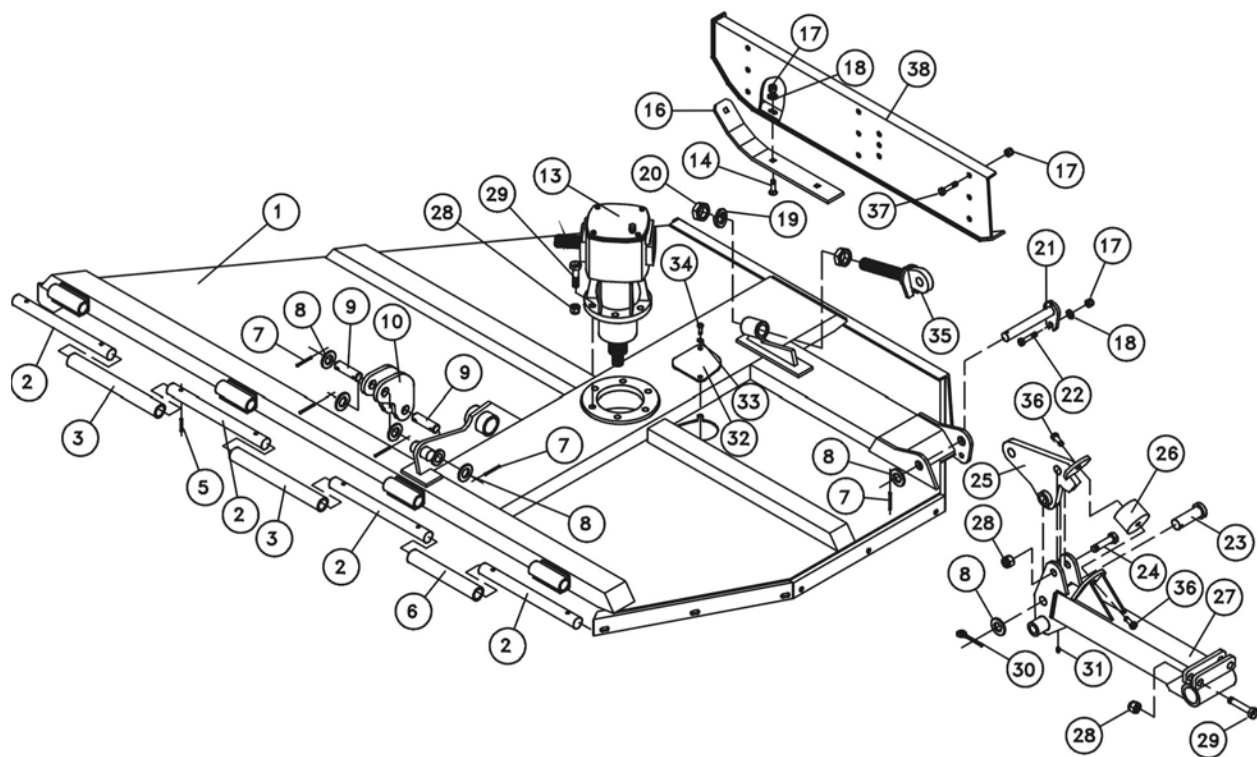
# CENTER SECTION FRAME



## CENTER SECTION FRAME

Ref.	Part No.	Description	Qty.
1	C314-101	Center section assembly	1
2	228-012	Hose organizer	2
3	250-112	Bolt, 3/4 x 3 UNC	6
4	270-004	Lock nut, 5/8 UNC	10
5	250-093	Bolt, 5/8 x 1-3/4 UNC	2
6	256-006	Flat washer, 5/8	2
7	C310-112	Skid mount assembly	2
8	250-084	Bolt, 5/8 x 4-1/2 UNC	4
9	C301-113	Wing lift spacer plate	2
10	250-060	Bolt, 1/2 x 1-3/4 UNC	3
11	C310-144	Retainer pin, 1 x 5-3/16 U.L.	1
12	256-011	Flat washer, 1/2	3
13	270-007	Lock nut, 1/2 UNC	3
14	256-001	Flat washer, 1	3
15	262-006	Roll pin, 3/8 x 2	3
16	C310-143	Retainer pin, 1 x 2-3/4 U.L.	2
17	250-112	Bolt, 3/4 x 3 UNC (light truck tire)	2
	250-111	Bolt, 3/4 x 4 UNC (laminated & aircraft)	2
18	C310-105	Cylinder lug adjustment assembly.	1
19	C310-120	Spacer plate, 1" (light truck tire)	1
	C310-120	Spacer plate, 1" (laminated & aircraft tire)	2
* See "Fixed Knife Shredder Kit" parts page for additional spacer plates required			
* See "Sod Kit" parts page for special spacer plate requirements			
20	C301-118	Wing lock pin, 1 x 5-9/16 U.L.	2
21	250-023	Bolt, 3/8 x 1-3/4 UNC	5
22	256-017	Flat washer, 3/8	4
23	300-012	Lynch pin, 1/4	3
24	C312-119	Slow moving vehicle sign stand	1
25	270-017	Lock nut, 3/8 UNC	8
26	250-019	Bolt, 3/8 x 1-1/4 UNC	2
27	270-001	Lock nut, 3/4 UNC	8
28	C310-115	Bolt access cover plate	1
29	255-013	Lock washer, 3/8	2
30	250-018	Bolt, 3/8 x 1 UNC	4
31	330-7035	Gear box, 540 RPM	1
	330-7036	Gear box, 1000 RPM	1
33	150-32	Complete, SMV sign	1
34	330-930	Splitter box, 540 RPM	1
	330-931	Splitter box, 1000 RPM	1
35	250-090	Bolt, 5/8 x 2 UNC	4
36	C310-127	Transport lock pin, 1 x 5-5/16 U.L.	1
37	280-200	Manual Box	1
38	256-018	Washer, 1/4"	2
39	250-002	Bolt, 1/4" x 1" UNC	2
40	270-025	Locknut, 1/4" UNC	2
41	C000-001	Hose clamp	1
42	262-005	Roll Pin, 3/8 x 2-1/2"	1

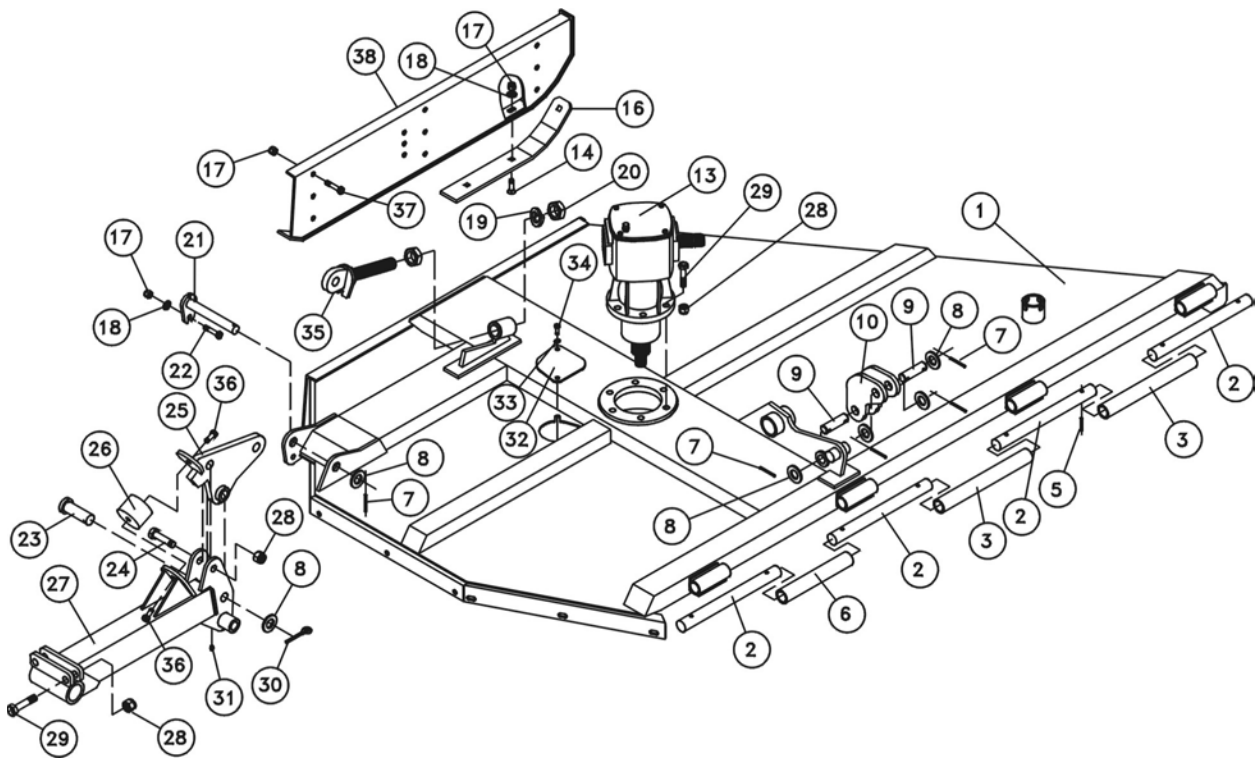
# WING FRAME, RIGHT



## WING FRAME, RIGHT

Ref.	Part No.	Description	Qty.
1	C314-155	Wing assembly, right	1
2	752-014	Hinge pin, 15" O.A.	4
3	C310-140	Hinge spacer tube, 13-7/8" O.A.	2
5	262-011	Roll Pin, 3/8 x 1-3/4	6
6	C310-141	Hinge spacer tube, 10-3/8" O.A.	1
7	262-006	Roll pin, 3/8 x 2	5
8	256-001	Flat washer, 1	6
9	C301-140	Pin, 1 x 3-13/32" O.A.	2
10	C301-114	Floating lug	2
13	330-7031	Gearbox, CCW	1
* CW Gearbox (330-7030) is required for fixed knife, material distribution, and sod kits.			
<i>See your Schulte Dealer</i>			
14	250-201	Plow bolt, 1/2 x 1-1/2 UNC	3
16	C310-135	Outer wing skid, standard	1
17	270-007	Lock nut, 1/2 UNC	10
18	256-011	Flat washer, 1/2	4
19	255-020	Lock washer, 1-1/4"	1
20	257-054	Half nut, 1-1/4" UNC	2
21	C310-145	Retainer pin, 1 x 6-15/16 U.L.	1
22	250-059	Bolt, 1/2 x 1-1/2 UNC	1
23	302-015	Clevis pin, 1 x 2-7/8	1
24	250-111	Bolt, 3/4 x 4 UNC	1
25	C310-124	Wheel standard suspension plate	1
26	233-050	Rubber sandwich	1
27	C310-123	Wing wheel standard assembly	1
28	270-001	Lock nut, 3/4 UNC	9
29	250-112	Bolt, 3/4 x 3 UNC	8
30	271-005	Cotter pin, 3/16 x 1-1/2	1
31	273-006	Grease nipple, self tap	1
32	C310-115	Bolt access cover plate	1
33	255-013	Lock washer, 3/8	2
34	250-018	Bolt, 3/8 x 1 UNC	2
35	C320-132	Wing adjustment assembly	1
36	250-055	Bolt, 1/2 x 3/4 UNF	2
37	250-061	Bolt, 1/2 x 1-1/4 UNC	6
38	C312-157	Adjustable side mount, right	1

# WING FRAME, LEFT

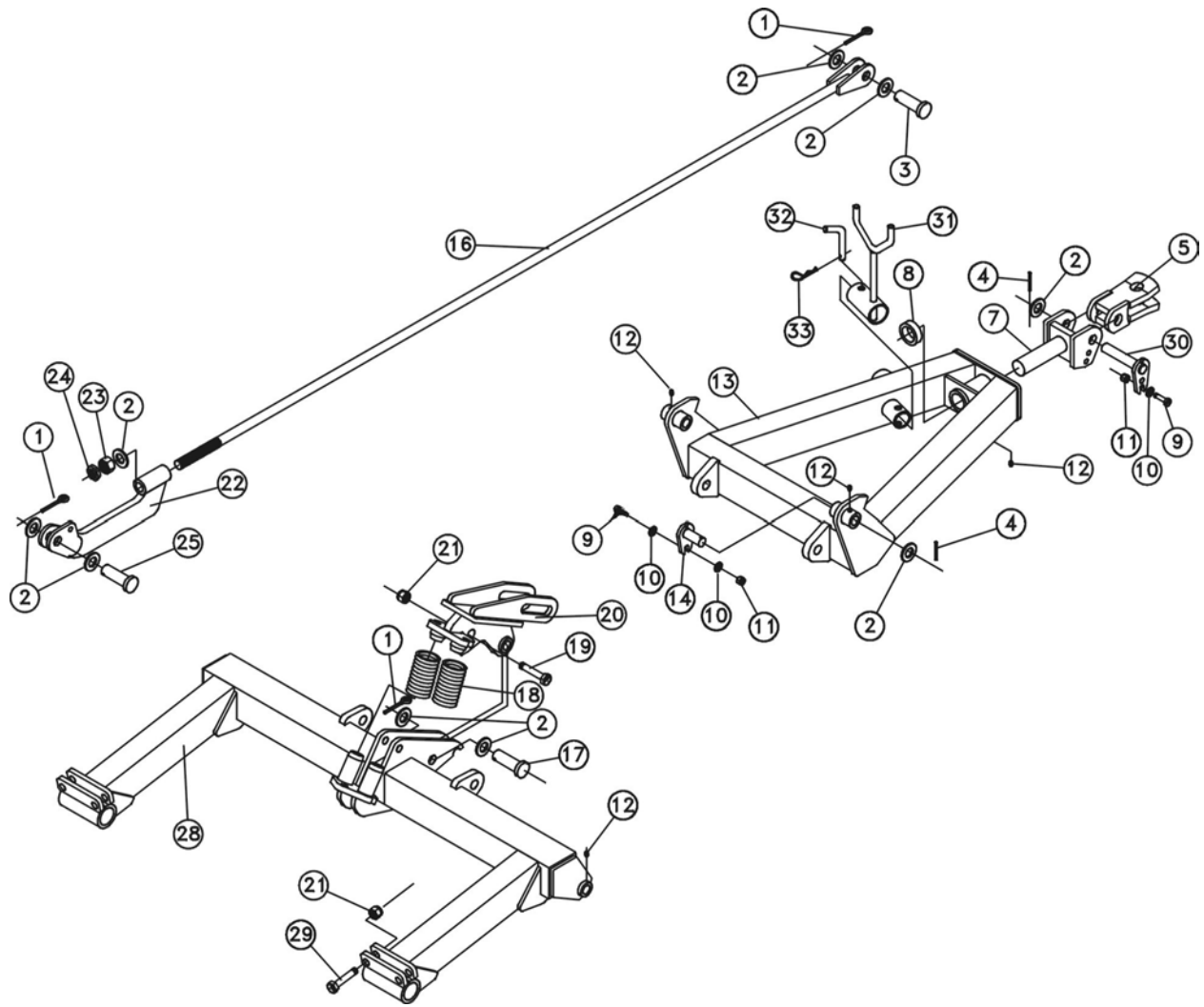




## WING FRAME, LEFT

Ref.	Part No.	Description	Qty.
1	C314-150	Wing assembly, left	1
2	752-014	Hinge pin, 15" O.A.	4
3	C310-140	Hinge spacer tube, 13-7/8" O.A.	2
5	262-011	Roll Pin, 3/8 x 1-3/4	6
6	C310-141	Hinge spacer tube, 10-3/8" O.A.	1
7	262-006	Roll pin, 3/8 x 2	5
8	256-001	Flat washer, 1	6
9	C301-140	Pin, 1 x 3-13/32" O.A.	2
10	C301-114	Floating lug	2
13	330-7030	Gearbox, CW	1
* CCW Gearbox (330-7031) is required for fixed knife, material distribution, and sod kits.			
<i>See your Schulte Dealer</i>			
14	250-201	Plow bolt, 1/2 x 1-1/2 UNC	3
16	C310-135	Outer wing skid, standard	1
17	270-007	Lock nut, 1/2 UNC	10
18	256-011	Flat washer, 1/2	4
19	255-020	Lock washer, 1-1/4"	1
20	257-054	Half nut, 1-1/4" UNC	2
21	C310-145	Retainer pin, 1 x 6-15/16 U.L.	1
22	250-059	Bolt, 1/2 x 1-1/2 UNC	1
23	302-015	Clevis pin, 1 x 2-7/8	1
24	250-111	Bolt, 3/4 x 4 UNC	1
25	C310-124	Wheel standard suspension plate	1
26	233-050	Rubber sandwich	1
27	C310-123	Wing wheel standard assembly	1
28	270-001	Lock nut, 3/4 UNC	9
29	250-112	Bolt, 3/4 x 3 UNC	8
30	271-005	Cotter pin, 3/16 x 1-1/2	1
31	273-006	Grease nipple, self tap	1
32	C310-115	Bolt access cover plate	1
33	255-013	Lock washer, 3/8	2
34	250-018	Bolt, 3/8 x 1 UNC	2
35	C320-132	Wing adjustment assembly	2
36	250-055	Bolt, 1/2 x 3/4 UNF	2
37	250-061	Bolt, 1/2 x 1-1/4 UNC	6
38	C312-152	Adjustable skid mount, left	1

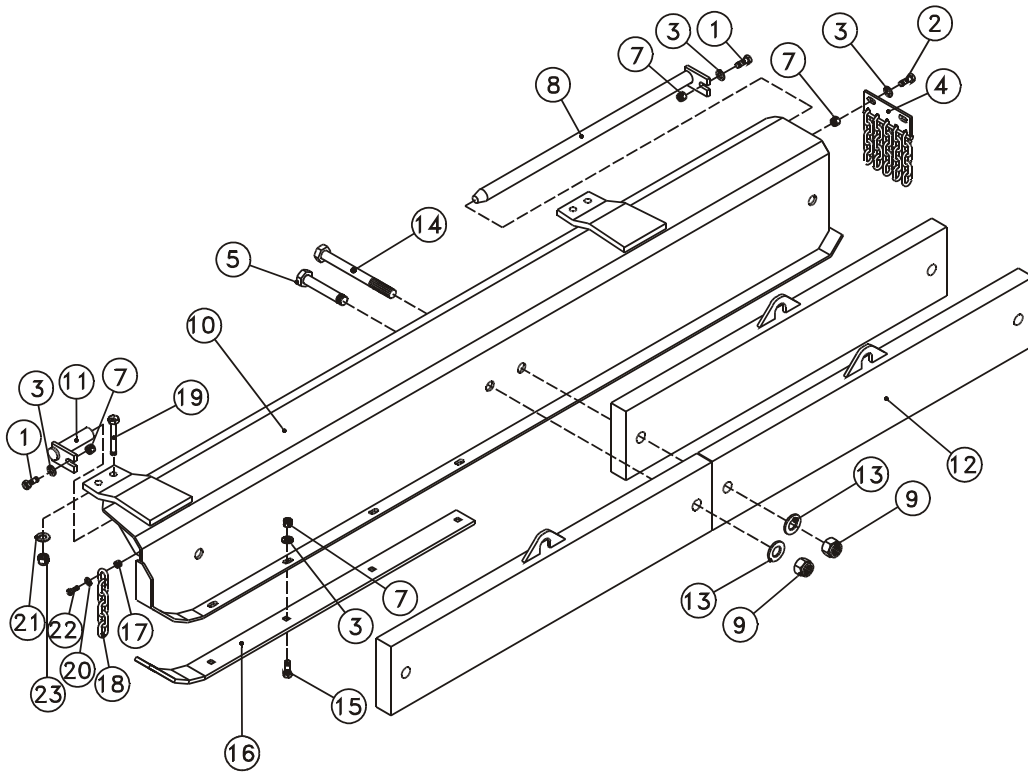
# HITCH FRAME AND CENTER WHEEL STANDARD



## HITCH FRAME AND CENTER WHEEL STANDARD

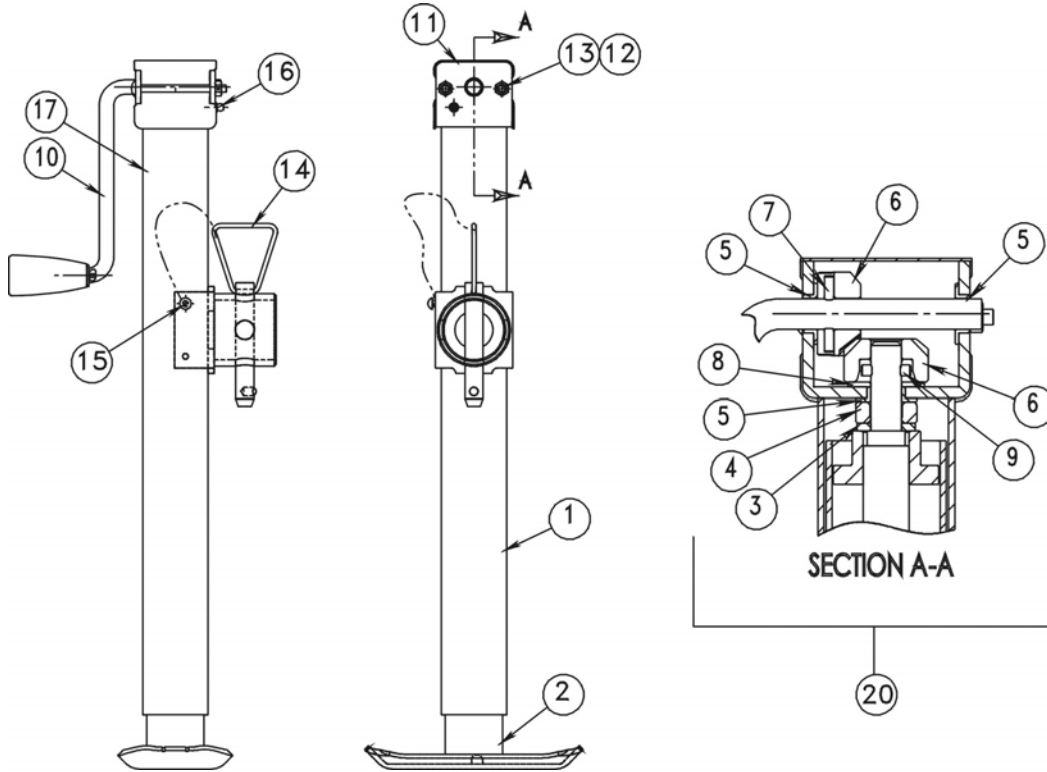
Ref.	Part No.	Description	Qty.
1	271-005	Cotter pin, 3/16 x 1-1/2	3
2	256-001	Flat washer, 1	13
3	302-013	Clevis pin, 1 x 2-1/8	2
4	262-006	Roll pin, 3/8 x 2	3
5	C310-113	Hitch clevis	1
7	C310-118	Pivoting hitch assembly.	1
8	C310-119	Pivot hitch weld sleeve	1
9	250-060	Bolt, 1/2 x 1-3/4 UNC	3
10	256-011	Flat washer, 1/2	7
11	270-007	Lock nut, 1/2, UNC	3
12	273-006	Grease nipple, self tap	6
13	C310-117	Hitch frame assembly	1
14	C310-142	Retaining pin, 1 x 3-15/16 U.L.	2
16	C310-131	Lift rod, 101" O.A.	2
17	302-015	Clevis pin, 1 x 2-7/8	1
18	229-007	Compression spring, 1/2"	2
19	250-111	Bolt, 3/4 x 4 UNC	1
20	C310-125	Suspension top plate	1
21	270-001	Lock nut, 3/4 UNC	5
22	CS01-130	Leveling rod lug	2
23	257-008	Nut, 1 UNC	2
24	257-006	Half nut, 1 UNC	2
25	302-012	Clevis pin, 1 x 1-15/16	2
28	C310-108	Center section wheel standard	1
29	250-112	Bolt, 3/4 x 3 UNC	4
30	CS01-134	Retaining pin, 1 x 4-5/8 U.L.	1
31	C502-183	PTO storage support	1
32	302-034	Bent hitch pin	1
33	271-053	#10 hitch pin clip	1

## 10' SKIRT ASSEMBLY



Ref.	Part No.	Description	Qty.
1	250-060	Bolt, 1/2" x 1-3/4" UNC	2
2	250-059	Bolt, 1/2" x 1-1/2" UNC	2
3	256-011	Flat washer, 1/2"	9
4	C311-105	Chain guard, single	1
	C311-106	Chain guard, double	1
5	250-145	Bolt, 1" x 4" UNC	2
7	270-007	Lock nut, 1/2" UNC	9
8	C311-102	Hinge pin, 29 1/8" O.A.	1
9	270-020	Lock nut, 1" UNC	4
10	C311-101	Skirt assembly, 10'	1
11	C311-103	Hinge pin, 5" O.A.	1
12	C302-104	Counter weight	3
13	256-001	Flat washer, 1"	4
14	250-129	Bolt, 1" x 6" UNC	2
15	250-201	Plow bolt, 1/2" x 1-1/2" UNC	5
16	C302-106	Skirt skid	1
17	270-017	Lock nut, 3/8" UNC	3
18	225-106	Chain, 5/16" proof coil, 6 links	3
	225-111	Chain, 5/16" proof coil, 11 links	3
19	250-085	Bolt, 5/8" x 4" UNC	4
20	256-017	Flat washer, 3/8"	3
21	256-006	Flat washer, 5/8"	4
22	250-020	Bolt, 3/8" x 1-1/2" UNC	3
23	270-004	Lock nut, 5/8" UNC	4

# HITCH JACK, 15" SIDE WIND (232-800)



Ref.	Part No.	Description	Qty.
1	232-621	Outer Tube and Mount	1
2	232-622	Inner Tube/ S&N Assembly	1
10	232-623	Crank, Handle	1
11	232-624	Cover	1
12	232-625	Bolt, 1/4-20 x 3.12" Carriage	2
13	232-626	Locknut, 1/4"	2
14	232-627	Pull Pin Assembly	1
16	232-628	Grease Fitting	1
20	232-630	Repair Kit, c/w Ref # 3 to 9	1

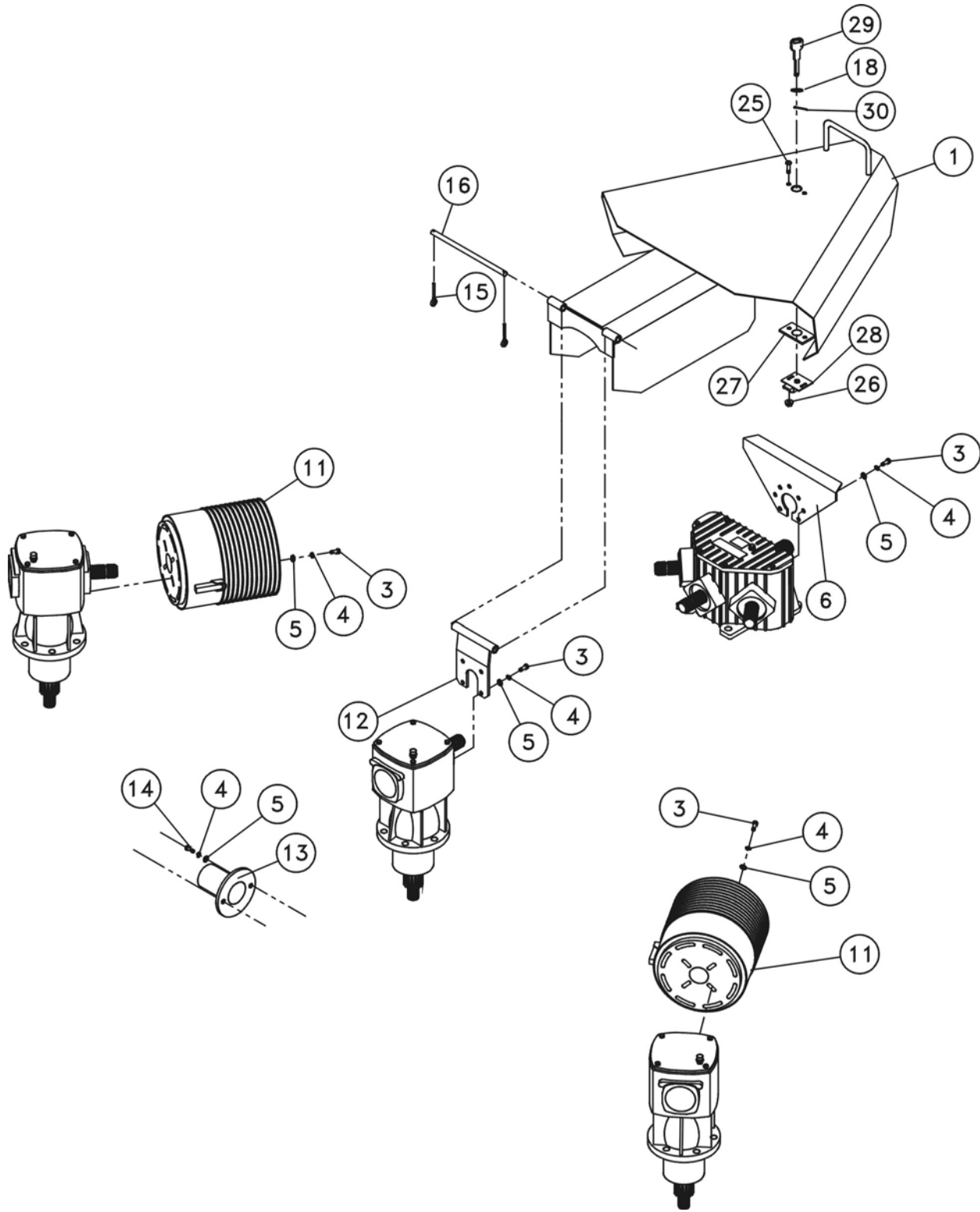
NOTE: THIS JACK WILL REPLACE JACK 232-600



## HUB, AXLES & TIRES

Ref.	Part No.	Description	Qty.
1	208-018	Spindle, c/w #9, 15, 16, double end	1
1	208-019	Spindle, c/w #9, 15, 16, single end	1
2	207-026	Seal	1
3	207-019	Bearing	1
4	207-020	Race	1
5	273-006	Grease nipple, self-tap	1
6	205-007	Hub, c/w outer races	1
7	207-025	Race	1
8	207-024	Bearing	1
9	271-005	Cotter pin, 3/16 x 1-1/2	1
10	201-005	Wheel, 15 x 5 KB, 5 bolt, For 7.00 Tire	1
	201-010	Wheel, 15 x 8 x 5, For 9.5L Tire	1
11	211-002	Valve stem	1
12	210-167	Tire, 7.00 x 15, 8 ply	1
	210-157	Tire, 9.5L x 15	1
13	207-0281	Wheel bolt, 1/2-20 UNF x 1" wide shoulder	5
14	207-027	Dust cap	1
15	209-017	Castle nut, 3/4 - 16 UNF	1
17	250-018	Bolt, 3/8 x 1 UNC	5
18	210-003	Tire, solid laminated, complete	1
19	255-013	Lock washer, 3/8"	5
20	257-032	Nut, 3/8 UNC	5
21	201-008	Wheel half, 6 x 9, 5 bolt	2
22	210-004	Tire, solid laminated, 6 x 9	1
23	206-009	Hub, includes #2-8 & 14	1
23	207-055	Bearing Kit, includes #2, 3, 4, 7, 8, 14, 16	1
24	210-162	Aircraft tire 22 x 5.5 x 10 complete	1
	211-010	Tube & liner for #210-162	
25	255-009	Lock washer, 1/2	5
26	250-0612	Bolt, 1/2 x 1-1/4 UNF Gr. 5	5

# DRIVELINE SHIELDING

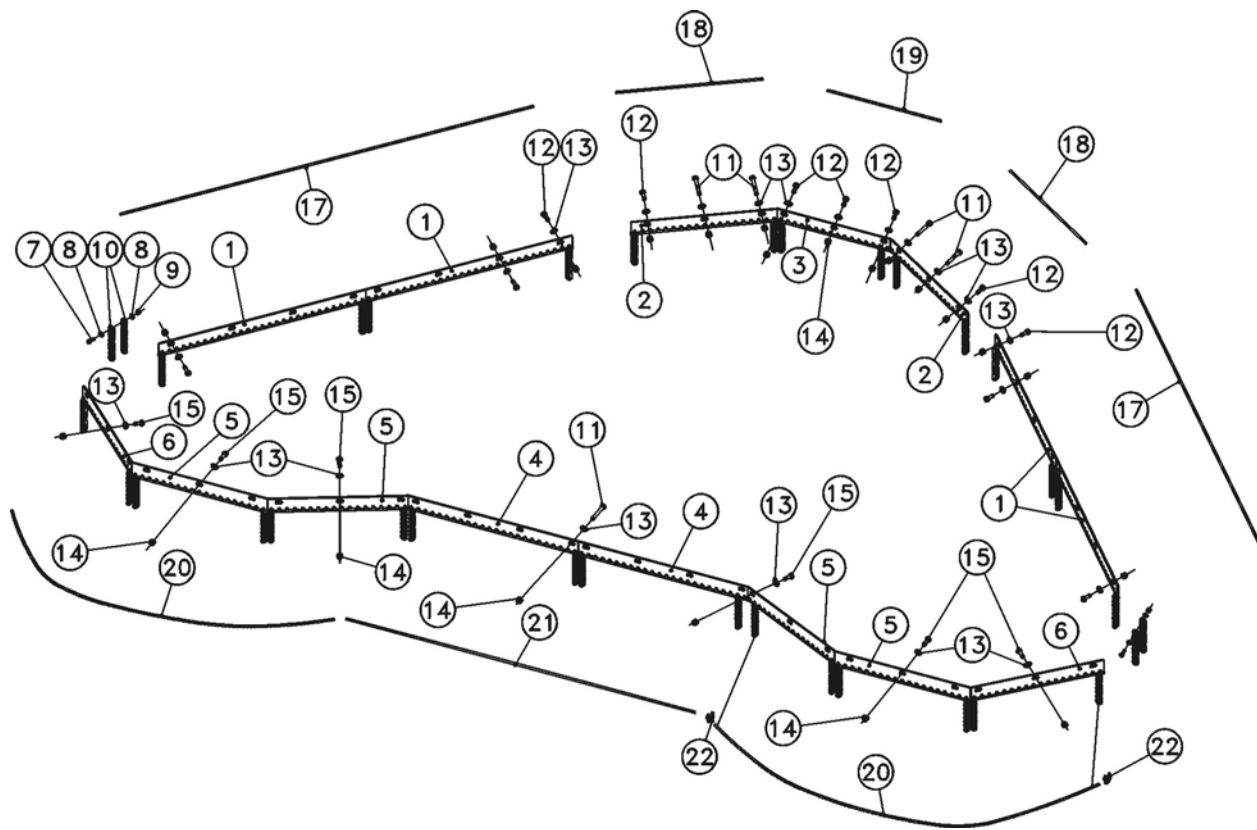




## DRIVELINE SHIELDING

Ref.	Part No.	Description	Qty.
1	C314-203	Center section shield assembly CE	1
3	251-008	Bolt, M8 x 20mm	15
4	255-015	Lock washer, 5/16"	15
5	256-020	Flat washer, 5/16"	15
6	C314-202	Splitter shield mount	1
11	341-6235	Plastic shield	2
12	C314-204	Center gearbox pivot shield mount	1
13	341-600	Plastic shaft cover for splitter, 10' units	1
14	250-006	Bolt, 5/16" x 3/4" UNC, 10' units	2
15	271-008	Cotter pin, 1/8" x 1"	2
16	C301-203	Shield hinge pin	1
25	251-151	Machine Screw #10 x .75" Round Head	2
26	270-028	Locknut, 10-24 Nylock	2
27	C314-205	Spacer CE Shield	1
28	227-001	Latch	1
29	227-002	Euro Lock Key, 10 Ga Stainless Steel	1
30	271-013	Cotter Pin, 1/16" x 3/4" long (Not for CE)	1

# CHAIN GUARDS



## CHAIN GUARDS

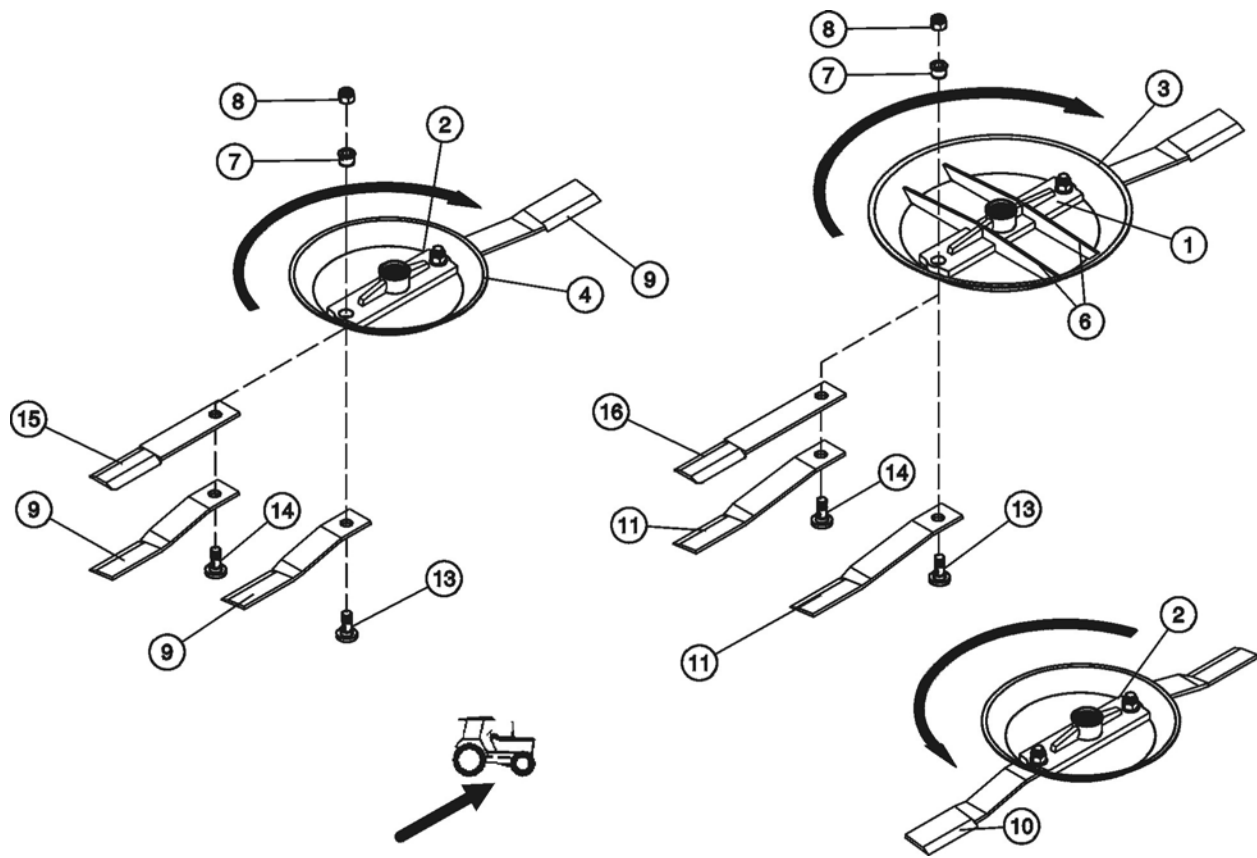
### **C310-550 Double Chain Guard Kit, S150**

<b>Ref.</b>	<b>Part No.</b>	<b>Description</b>	<b>Qty.</b>
1	C310-555	Chain guard double, wing front	4
2	C310-552	Chain guard double, center front outer	2
3	C310-551	Chain guard double, center front middle	1
4	C310-554	Chain guard double, center rear	2
5	C310-557	Chain guard double, wing rear	4
6	C310-558	Chain guard double, wing rear outer	2
7	250-026	Bolt, 3/8" x 2-1/2" UNC	2
8	256-017	Flat washer, 3/8"	4
9	270-017	Lock nut, 3/8" UNC	2
10	225-109	Chain, 5/16" proof coil, 9 links	4
11	250-050	Bolt, 1/2" x 3-1/2" UNC	12
12	250-061	Bolt, 1/2" x 1-1/4" UNC	21
13	256-011	Flat washer, 1/2"	63
14	270-007	Lock nut, 1/2" UNC	51
15	250-059	Bolt, 1/2" x 1-1/2"	18

### **C310-520 Cable Kit for Double Chains, S150**

<b>Ref.</b>	<b>Part No.</b>	<b>Description</b>	<b>Qty.</b>
17	221-413	Cable, 73"	2
18	221-415	Cable, 26-3/4"	2
19	221-416	Cable, 22"	1
20	221-414	Cable, 75-1/4"	2
21	221-417	Cable, 62"	1
22	222-003	Cable clamp, 1/8"	16

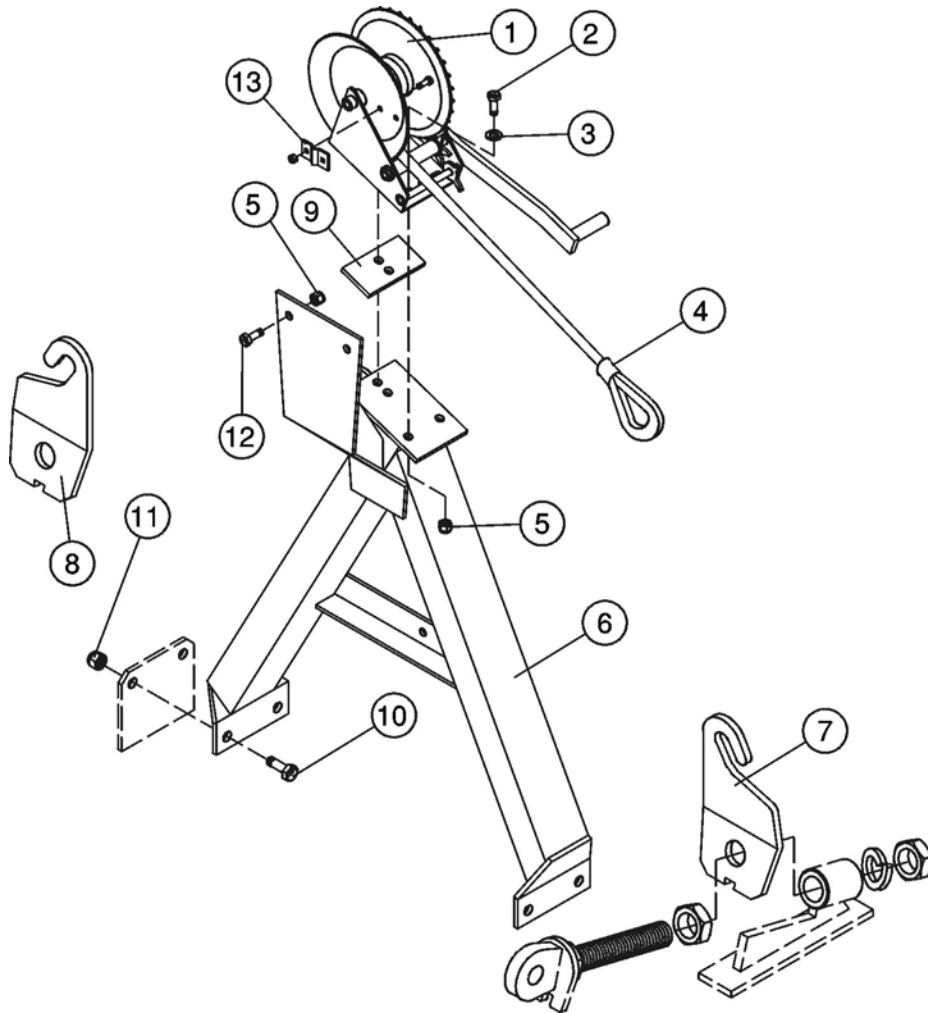
# BLADE CARRIERS



## BLADE CARRIERS

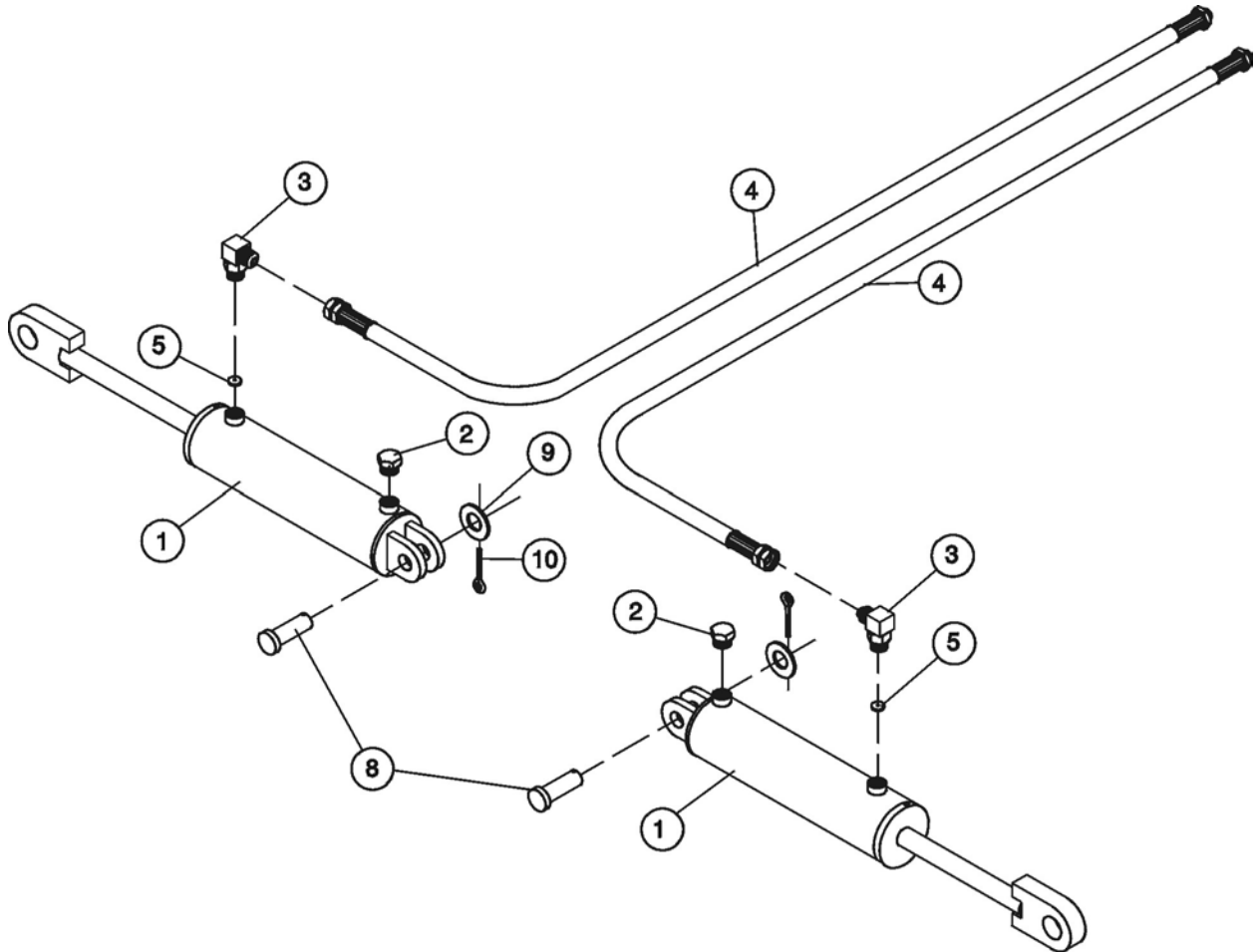
Ref.	Part No.	Description	Qty.
1	C303-222	Blade carrier, center, complete	1
2	C303-220	Blade carrier, wing, complete	2
3	520-1076	Pan only, center	1
4	520-1075	Pan only, wing	2
6	586-535	Pan reinforcements, center	4
7	251-020	Pentagon bushing, blade bolt	6
8	257-003	Locknut, 1-1/8 - 12, UNF	6
9	401-026	Blade, 1/2 x 4 x 25, CW, Super Suction	2
10	401-027	Blade, 1/2 x 4 x 25, CCW, Super Suction	2
11	401-032	Blade, 1/2 x 4 x 28, CW, Super Suction	2
13	251-018	Blade bolt, 1-1/8 - 12 UNF, 1/2"	6
	251-201	Blade bolt & nut, 1/2"	6

## WING WINCH KIT (C312-300)



Ref.	Part No.	Description	Qty.
1	450-050	Winch, 1600 lb., 5.1:1 ratio	1
2	250-019	Bolt, 3/8 x 1-1/4 UNC	3
3	256-017	Flat washer, 3/8	3
4	158-03	Cable, 135", 7/32 dia. 1/4 loop end	1
5	270-017	Lock nut, 3/8 UNC	5
6	C310-302	Winch lift stand	1
7	C312-302	Winch lift lug, right	1
8	C312-301	Winch lift lug, left	1
9	C301-303	Backing plate	1
10	250-061	Bolt, 1/2 x 1-1/4 UNC	4
11	270-007	Lock nut, 1/2 UNC	4
12	250-018	Bolt, 3/8 x 1 UNC	2
13	450-104	Winch cable keeper, hardware included	1

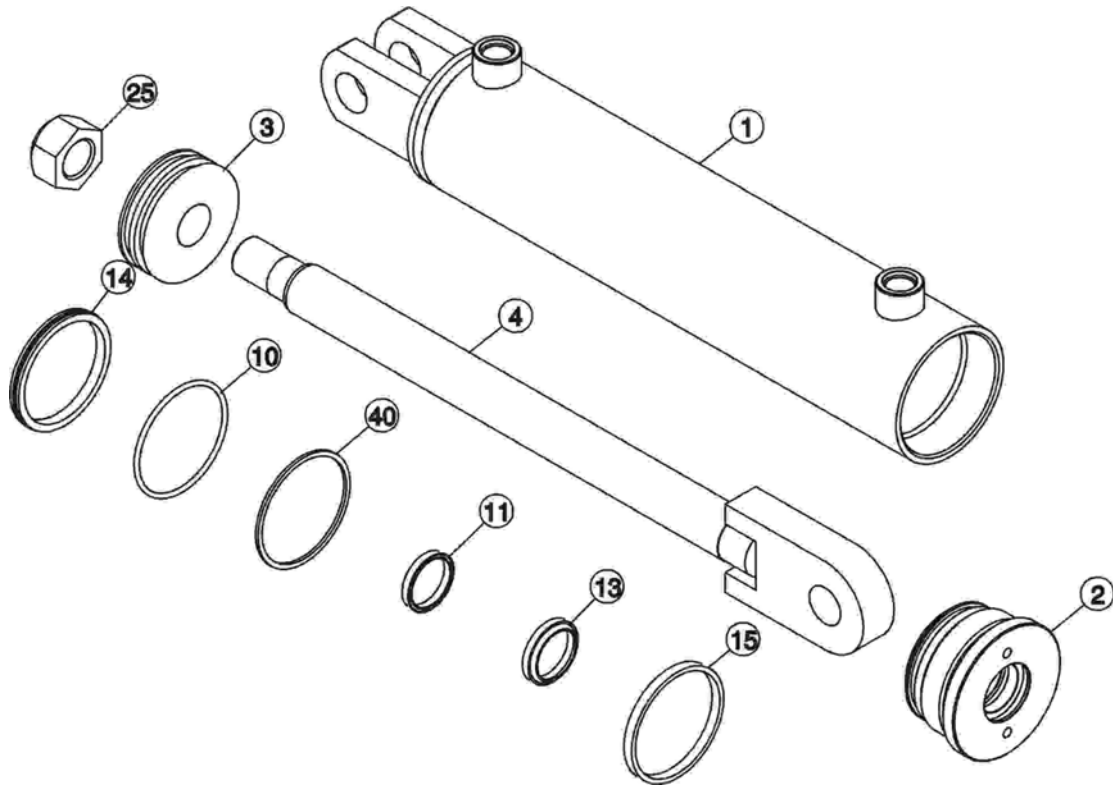
## WING LIFT CIRCUIT, SINGLE ACTING



**C310-820** Single Acting Wing Cylinder Kit  
Includes Ref # 2 only.

Ref.	Part No.	Description	Qty.
1	100-3701	Cyl. 3 X 12 ORB	2
2	108-056	Breather, filter 3/4- 16 ORB	2
3	108-043	Elbow, 3/4" ORB male X JIC male	2
4	111-185	Hose assembly, 3/8 SW, 183" long	2
5	C000-005	Restrictor	2
8	302-015	Clevis pin, 1 x 2-7/8 UL	2
9	256-001	Flat washer, 1 x 2	2
10	271-005	Cotter pin, 3/16 x 1-1/2	2

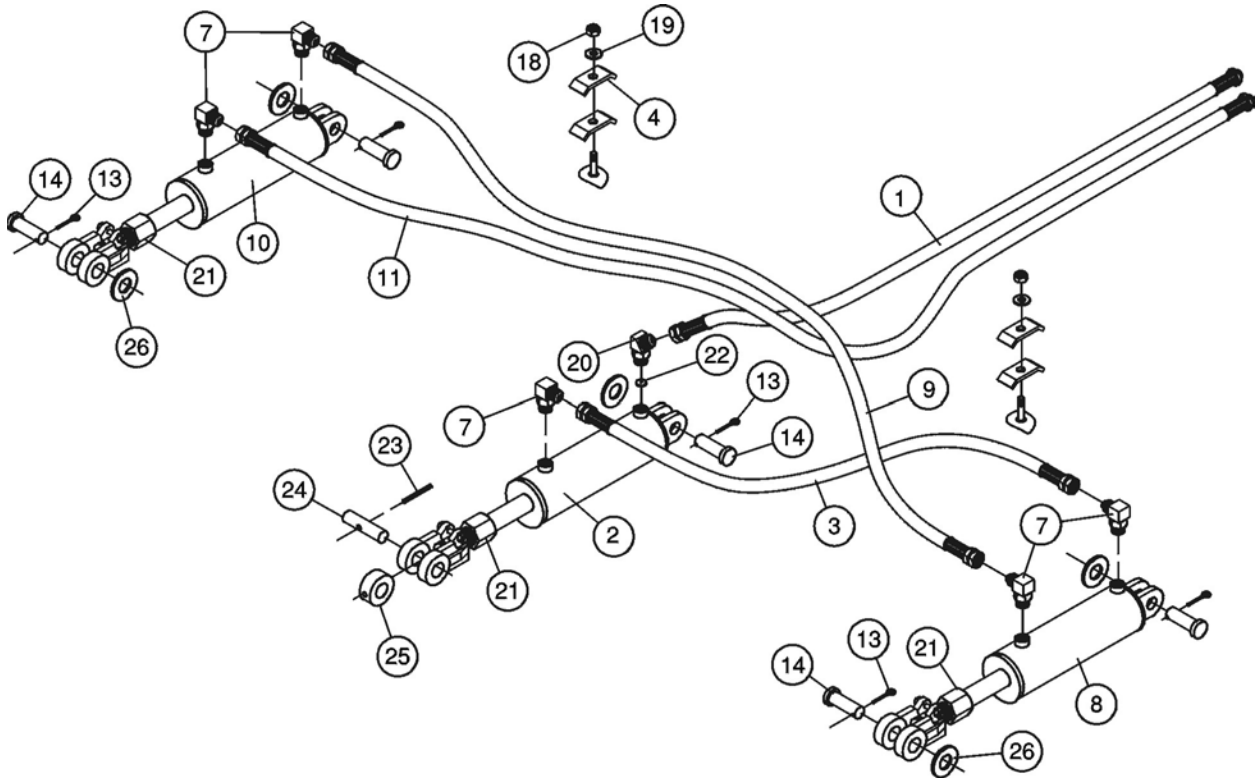
## WING LIFT CYLINDER, MONARCH (100-3701)



Ref.	Part No.	Description	Qty.
1	101-150	Casing, 3" x 12"	1
2	101-151	Cylinder Head	1
3	101-152	Piston	1
4	101-153	Rod	1
25	101-243	Lock Nut, 1"	1
41	101-025W	Seal Kit, Includes # 10, 11, 13-15, 40	1

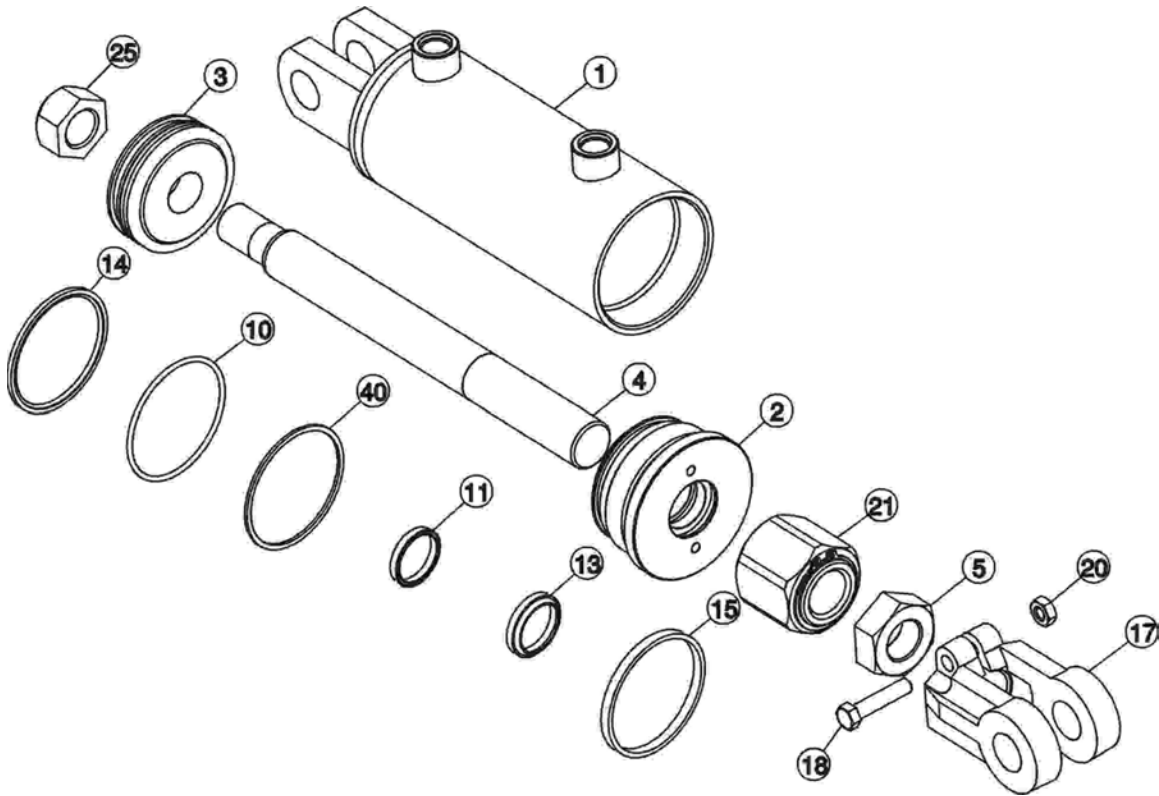


## PHASING CIRCUIT



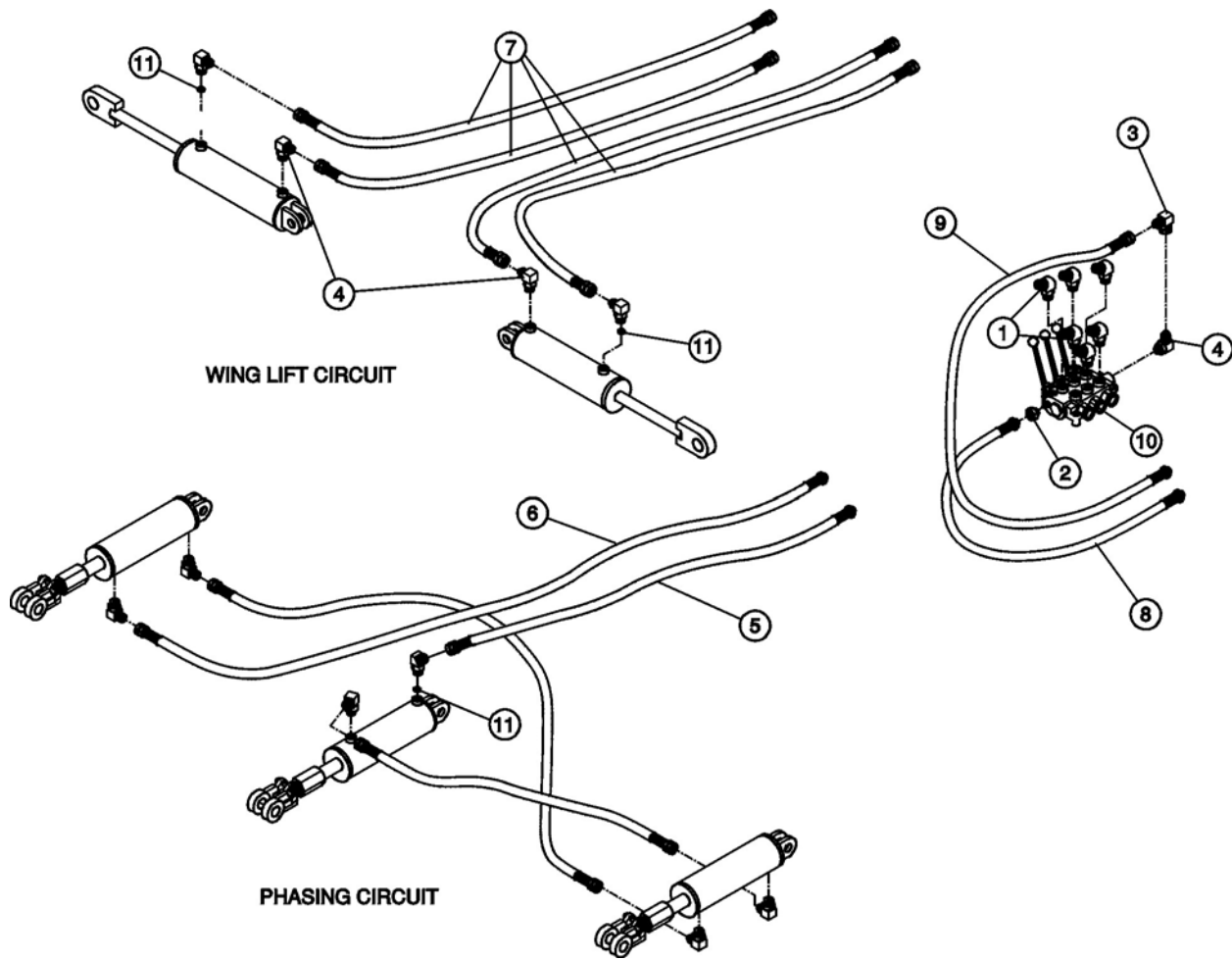
Ref.	Part No.	Description	Qty.
1	111-101	Hose assembly, 3/8 x 191" long	1
2	100-3671	Cylinder phasing, 3-1/2 x 5	1
3	111-188	Hose assembly, 3/8 x 84" long	1
4	C000-001	Hose clamp, metal	4
7	108-043	Elbow, 3/4 ORB male x JIC male	5
8	100-3681	Cylinder phasing, 3-1/4 x 5	1
9	111-186	Hose assembly, 3/8 x 171" long	1
10	100-3691	Cyl. phasing, 3 x 5	1
11	111-184	Hose assembly, 3/8 x 269" long	1
13	271-005	Cotter pin, 3/16 x 1-1/2	6
14	302-015	Clevis pin, 1 x 2-7/8 U.L.	6
17	250-023	Bolt, 3/8 x 1-3/4 UNC	1
18	256-017	Flat washer, 3/8	3
19	270-017	Locknut, 3/8 UNC	3
20	108-044	Elbow, 45° ORB x JIC	1
21	101-020	Depth stop	3
22	C000-005	Restrictor	1
23	262-006	Roll pin, 3/8" x 2	1
24	C502-193	Center section cylinder pin	1
25	C502-194	Cylinder pin sleeve	1
26	256-001	Washer, 1"	5

## PHASING CYLINDERS, MONARCH



Ref.	3" Part No.	3-1/4" Part No.	3-1/2" Part No.	Description	Qty.
	100-3691	100-3681	100-3671	Phasing Cylinder	
1	101-145	101-146	101-147	Casing	1
2	101-137	101-138	101-139	Cylinder Head	1
3	101-082	101-083	101-084	Piston	1
4	101-148	101-148	101-148	Rod	1
5	257-055	257-055	257-055	Jam nut, 1-1/4" UNF	1
17	101-021	101-021	101-021	Rod Clevis	1
18	250-023	250-023	250-023	Bolt, 3/8" x 1-3/4" UNC, Gr 5	1
20	270-017	270-017	270-017	Lock Nut, 3/8" UNC	1
21	101-020	101-020	101-020	Stroke Control Assembly	1
25	101-243	101-243	101-243	Lock Nut, 1"	1
41	101-065	101-066	101-067	Seal Kit, Incl #10,11,13-15,40	1

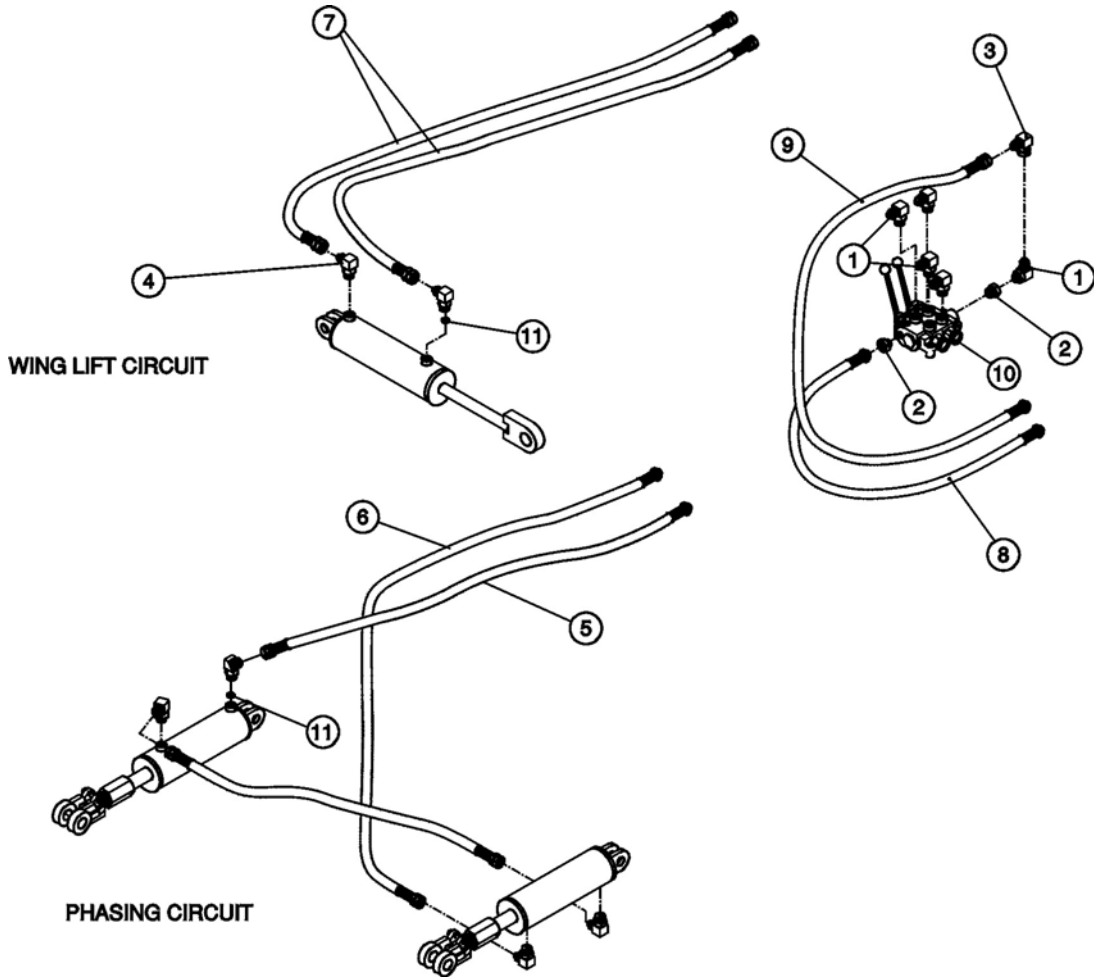
# SPOOL VALVE KIT, S150 (C301-805)



Ref.	Part No.	Description	Qty.
1	108-044	Elbow, 3/4 ORB x 3/4 JIC	6
2	108-068	Reducer, 3/4 ORB x 1/2 NPTF	1
3	108-031	Elbow, 3/4 - 16 JIC	1
4	108-043	Elbow, 3/4 ORB x 3/4 JIC	3
5	111-204	Hose assembly, 3/8 x 226" long	1
6	111-205	Hose assembly, 3/8 x 329" long	1
7	111-206	Hose assembly, 3/8 x 243" long	4
8	111-207	Hose assembly, 1/2 x 60" long	1
9	111-237	Hose assembly, 1/2 x 72" long	1
10	127-202	Valve, 3 spool	1
11	108-0071	Brass restrictor	3

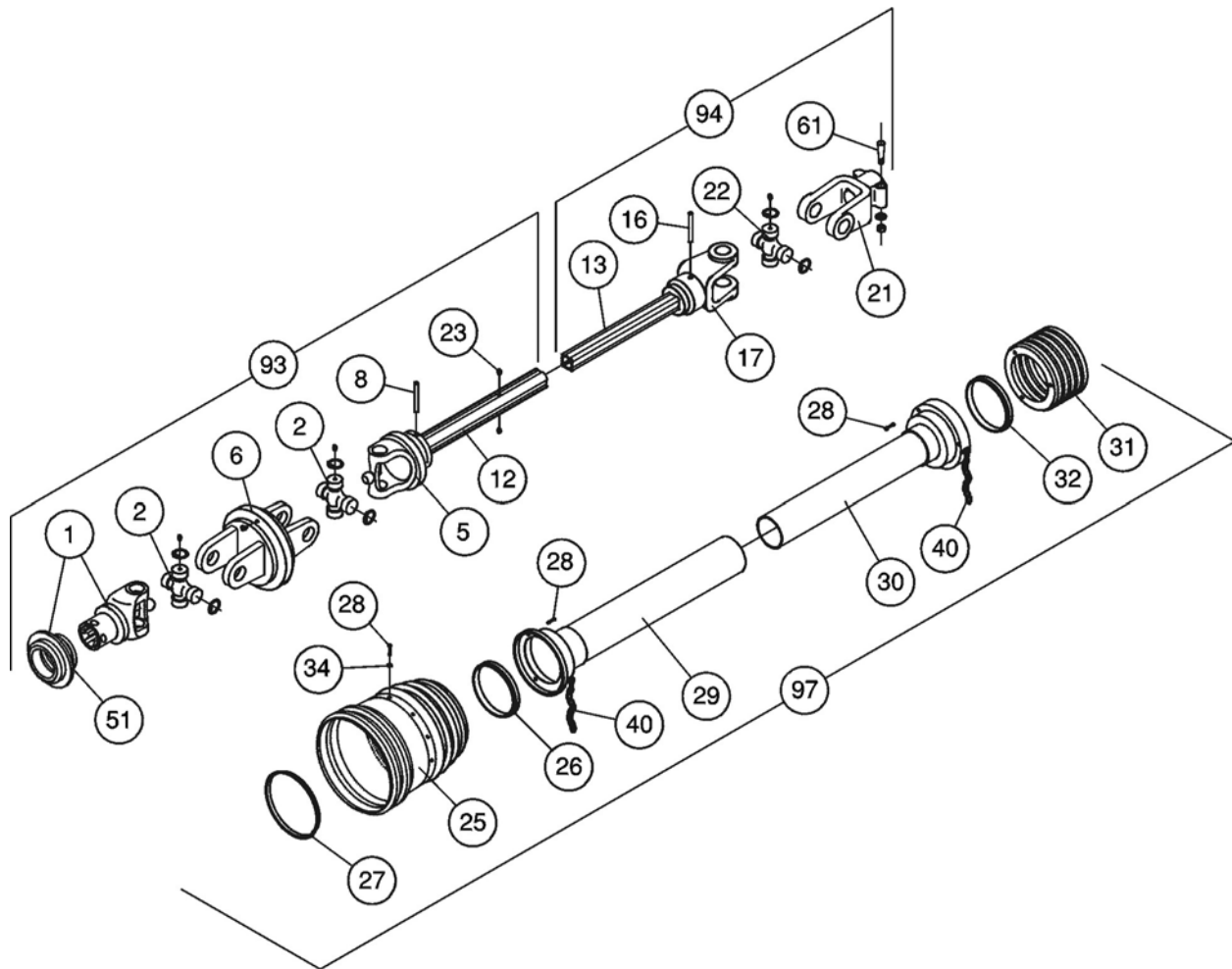


## SPOOL VALVE KIT, S100 (C302-805)



Ref.	Part No.	Description	Qty.
1	108-003	Elbow, 1/2 NPT x 3/4 JIC	5
2	108-018	Reducer, 3/4 NPTM x 1/2 NPTF	2
3	108-031	Elbow, 3/4 - 16 JIC	1
4	108-043	Elbow, 3/4 ORB x 3/4 JIC	2
5	111-204	Hose assembly, 3/8 x 226" long	1
6	111-205	Hose assembly, 3/8 x 329" long	1
7	111-206	Hose assembly, 3/8 x 243" long	2
8	111-207	Hose assembly, 1/2 x 60" long	1
9	111-237	Hose assembly, 1/2 x 72" long	1
10	127-201	Valve, 2 spool	1
11	108-0071	Brass restrictor	2

**TRACTOR UNIVERSAL JOINT W/ 80° C.V., SIZE 8 (340-850)**

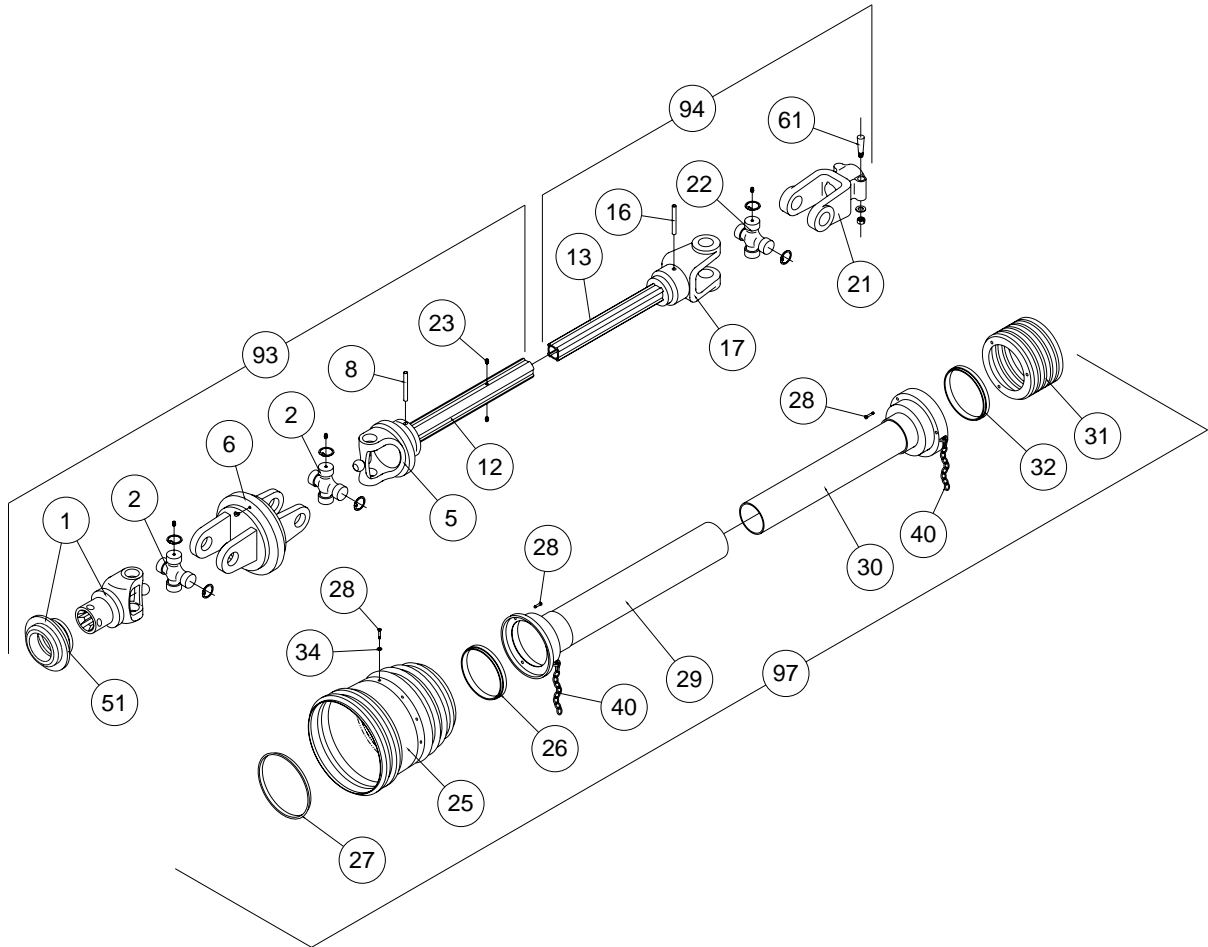


## TRACTOR UNIVERSAL JOINT W/ 80° C.V., SIZE 8 (340-850)

**Location: 540 RPM units**

<b>Ref.</b>	<b>Part No.</b>	<b>Description</b>	<b>Qty.</b>
1	341-80046	Yoke, 1-3/8 z6	1
2	341-80047	Cross Kit	2
5	341-80048	Yoke, Outer Tube	1
6	341-80045	Central Body	1
8	341-80074	Flexible Pin	1
12	341-80055	Outer Cardan Tube	1
13	341-80056	Inner Cardan Tube	1
16	341-80007	Flexible Pin	1
17	341-80008	Yoke, Inner Tube	1
21	341-80070	Yoke, 1-3/4 z20	1
22	341-80002	Cross Kit	1
23	341-8086	Grease Fitting, Short	2
25	341-80049	Bell Assembly	1
26	341-60039	Shield Bearing, Outer	1
27	341-80050	Ring	1
28	341-60020	Screw	12
29	341-80057	Outer Bell & Tube	1
30	341-80058	Inner Bell & Tube	1
31	341-80059	Shield	1
32	341-60014	Shield Bearing, Inner	1
34	341-80069	Washer	6
51	341-8095	Ball Collar Kit	1
61	341-802	Tapered Pin Kit	1
93	341-80061	Tractor Half Assembly w/ Shields, 1-3/8 z6	1
94	341-80062	Implement Half Assembly w/Shields	1
97	341-80067	Complete Shield Set	1

# DRIVELINE, 340-648



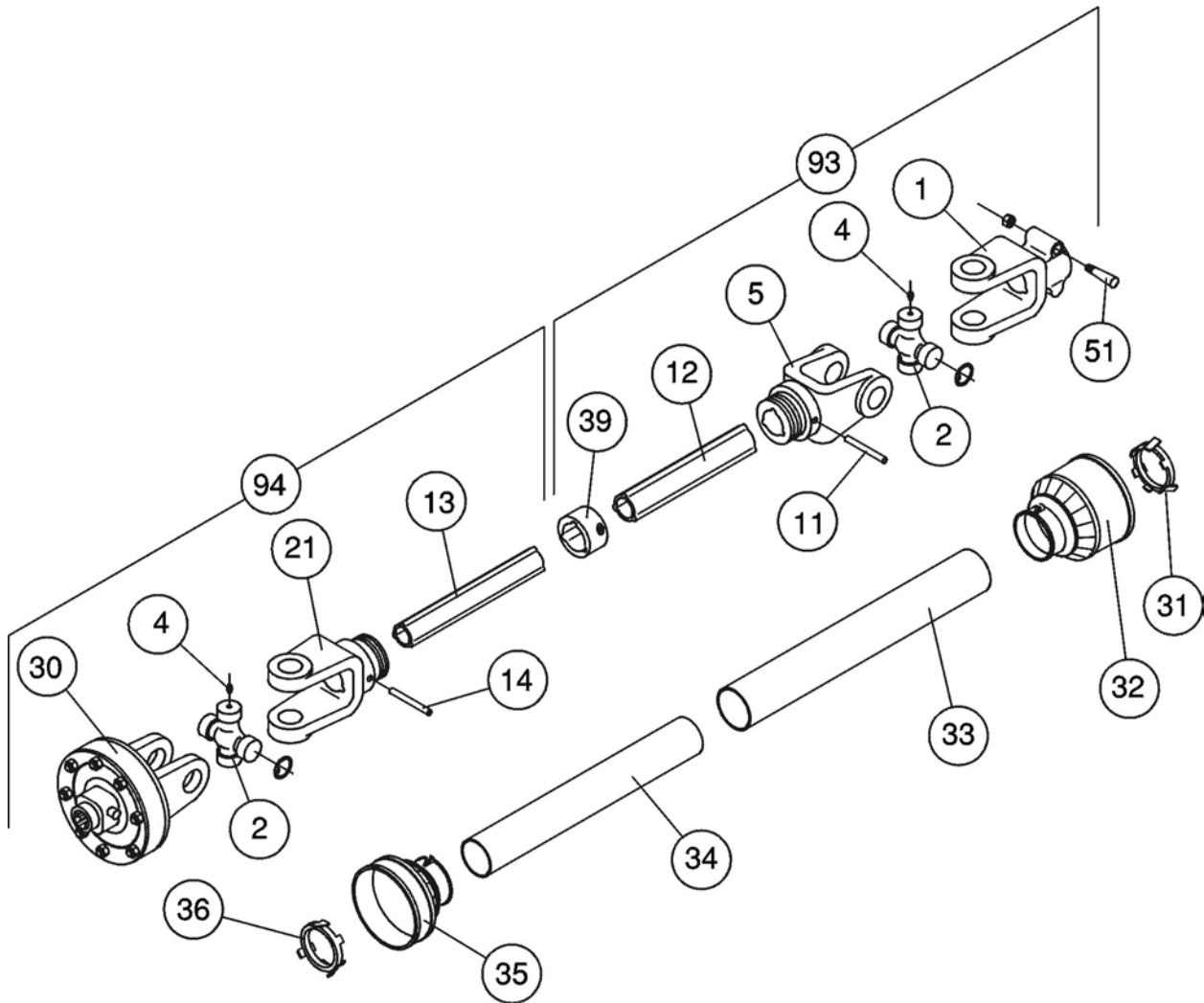


## DRIVELINE, 340-648

**NOTE: 1000 RPM CV Tractor Assembly**

Ref.	Part No.	Qty	Description
1	341-60050	1	Yoke, 1-3/8 z21
2	341-60032	2	Cross Kit
5	341-60033	1	Yoke, Outer Tube
6	341-60034	1	Central Body
8	341-80074	1	Flexible Pin
12	341-60035	1	Outer Cardan Tube
13	341-60051	1	Inner Cardan Tube
16	341-616	1	Flexible Pin
17	341-60006	1	Yoke, Inner Tube
21	341-60010	1	Yoke, 1-3/4 z20
22	341-60008	1	Cross Kit
23	341-8086	2	Grease Fitting, Short
25	341-60038	1	Bell Assembly
26	341-60039	1	Shield Bearing, Outer
27	341-60040	1	Ring
28	341-60020	12	Screw
29	341-60053	1	Outer Bell & Tube
30	341-60054	1	Inner Bell & Tube
31	341-60043	1	Shield
32	341-60014	1	Shield Bearing, Inner
34	341-80069	6	Washer
51	341-60062	1	Ball Collar Kit
61	341-802	1	Tapered Pin Kit
93	341-60055	1	Tractor Half Assembly w/ Shields, 1-3/8 z21
94	341-60056	1	Implement Half Assembly w/Shields
97	341-60058	1	Complete Shield Set
98	340-648	1	Complete Driveline, SFT-S6 w/80deg C.V, 1000 RPM

# WING UNIVERSAL JOINT, SIZE 6 (340-6013)

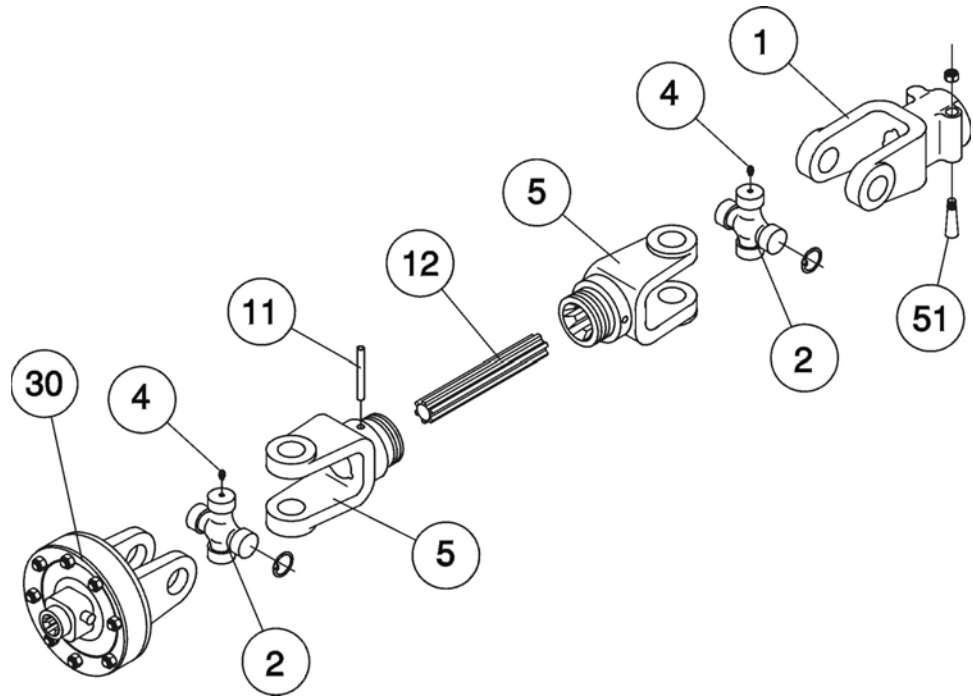


## WING UNIVERSAL JOINT, SIZE 6 (340-6013)

**Location: 540 & 1000 RPM units**

<b>Ref.</b>	<b>Part No.</b>	<b>Description</b>	<b>Qty.</b>
1	341-805	Yoke	1
2	341-605A	Cross Journal Assembly	2
4	341-653	Grease Zerk	2
5	341-622	Yoke, Outer	1
11	341-621	Flexible Pin	1
12	341-6285	Outer Cardan Tube	1
13	341-6286	Inner Cardan Tube	1
14	341-616	Flexible Pin	1
21	341-617	Yoke, Inner	1
30	341-6324	Slip Clutch, FT42, 1200Nm	1
31	341-610	Outer Shield Bearing	1
32	341-0680	Outer Cone	1
33	341-6287	Outer Tube	1
34	341-6288	Inner Tube	1
35	341-660	Inner Cone	1
36	341-615	Inner Shield Bearing	1
39	341-619	Greasing Collar	1
51	341-802	Tapered Pin	1
93	341-6282	Outer Half Shaft w/ Shields	1
94	341-6283	Inner Half Shaft w/ Shields and Clutch	1
97	341-6284	Complete Shield Set	1

# CENTER UNIVERSAL JOINT, SIZE 6

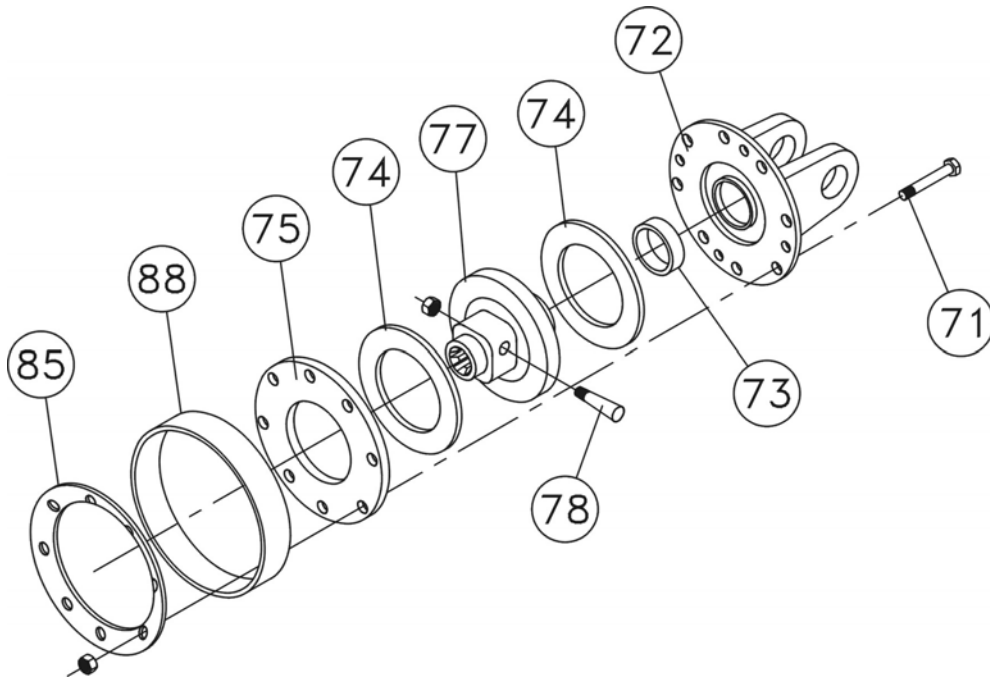


**340-6153 540 RPM units**

**340-6163 1000 RPM units**

Ref.	Part No.	Description	Qty.
1	341-805	Yoke	1
2	341-605A	Cross Journal Assembly	2
4	341-653	Grease Zerk	2
5	341-606	Yoke, Splined	2
11	341-608	Flexible Pin	1
12	341-6073	Splined Shaft, 120 mm	1
30	341-6322	Slip Clutch, FT42, 1450 Nm, <b>540 RPM</b>	1
or	341-6323	Slip Clutch, FT32, 1000 Nm, <b>1000 RPM</b>	1
51	341-802	Tapered Pin	1

## SLIP CLUTCH (341-6322, 341-6323)



**341-6322 Bondioli FT42**  
**Location: Center Drivelines, 540 RPM units**

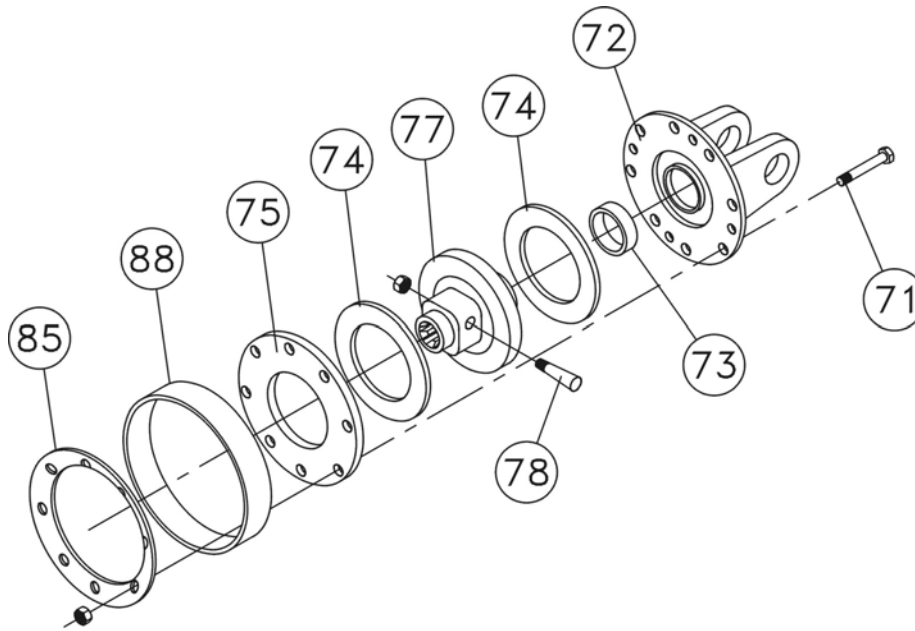
Ref.	Part No.	Description	Qty.
71	341-6014	Bolt & Nut	8
72	341-6312	Clutch Plate	1
73	341-630	Bushing	1
74	341-6247	Lining	2
75	341-6248	Thrust Plate	1
77	341-6280	Hub	1
78	341-802	Tapered Pin & Nut	1
85	341-6318	Spring	1
88	341-6234	Spacer	1

**341-6323 Bondioli FT32**  
**Location: Center Drivelines, 1000 RPM units**

Ref.	Part No.	Description	Qty.
71	341-6014	Bolt & Nut	8
72	341-6316	Clutch Plate	1
73	341-630	Bushing	1
74	341-6228	Lining	2
75	341-6208	Thrust Plate	1
77	341-6281	Hub	1
78	341-802	Tapered Pin & Nut	1
85	341-6317	Spring	1
88	341-6234	Spacer	1



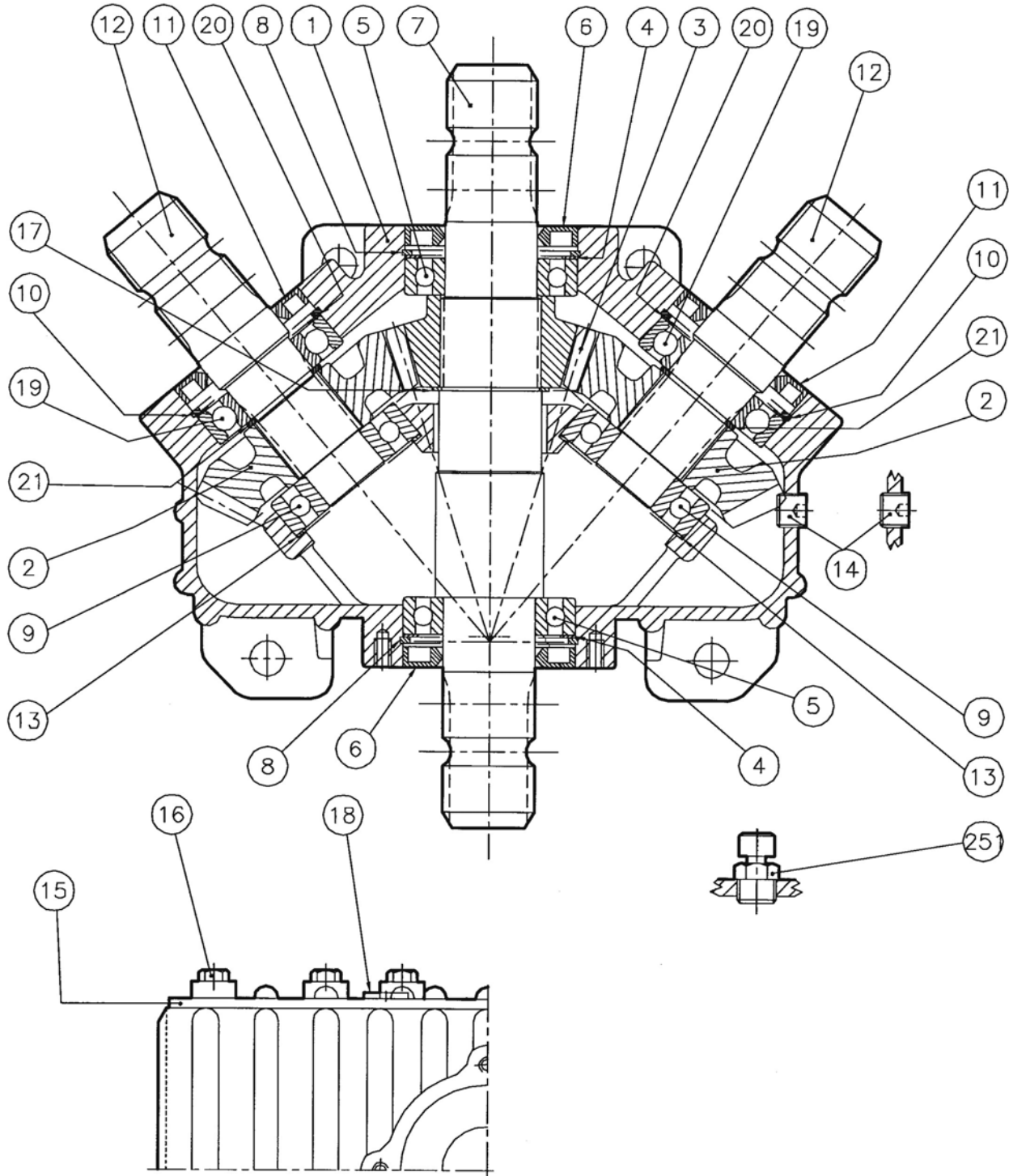
## SLIP CLUTCH (341-6324)



**341-6324 Bondioli FT42**  
**Location: Wing Drivelines, 540 and 1000 RPM units**

Ref.	Part No.	Description	Qty.
71	341-6014	Bolt & Nut	8
72	341-6312	Clutch Plate	1
73	341-630	Bushing	1
74	341-6247	Lining	2
75	341-6248	Thrust Plate	1
77	341-6280	Hub	1
78	341-802	Tapered Pin & Nut	1
85	341-6313	Spring	1
88	341-6251	Spacer	1

# DIVIDER GEARBOX





## DIVIDER GEARBOX

**330-930 Comer #T25A (265.870), 1:1.35 ratio**  
**Location: Center Section, 540 RPM units**

**330-931 Comer #T25A (265.871), 1.35:1 ratio**  
**Location: Center Section, 1000 RPM units**

Ref.	Part No.	Description	Qty.
1	331-973	Casing	1
2	331-950	Pinion Gear, Z20, <b>540 RPM</b>	2
or	331-952	Pinion Gear, Z27, <b>1000 RPM</b>	2
3	331-941	Crown Gear, Z27, <b>540 RPM</b>	1
or	331-943	Crown Gear, Z20, <b>1000 RPM</b>	1
4	331-974	Shim Kit	2
5	331-920	Ball Bearing	2
6	331-9019	Oil Seal, 45 x 85 x 10	2
7	331-975	Input Shaft, 1-3/4 Z20	1
8	331-914	Snap Ring	2
9	331-821	Ball Bearing	2
10	331-909	Snap Ring	2
11	331-858	Oil Seal, 45 x 80 x 10	2
12	331-976	Output Shaft, 1-3/4 Z20	2
13	331-924	Shim Kit	2
14	331-922	3/8" Gas Plug	2
15	331-977	Cover	1
16	331-902	Bolt, M8 x 30, gr 8.8	6
17	331-919	Snap Ring	1
18	331-978	Sub Plug, 1/2" Gas	1
19	331-857	Ball Bearing	2
20	331-741	Shim Kit	2
21	331-979	Snap Ring	2
251	331-928	Oil Filler Vent Plug, 1/2" Gas	1

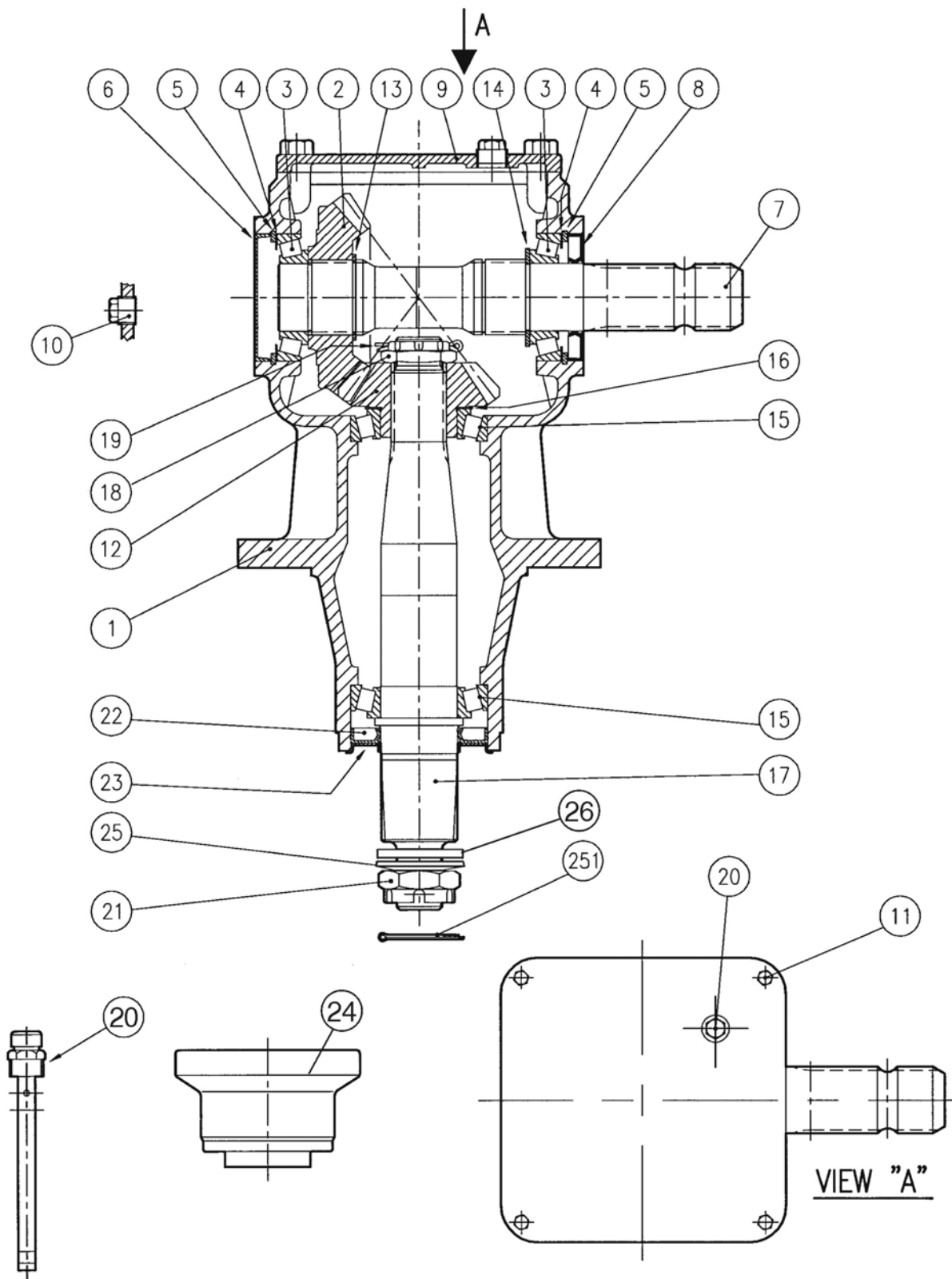


<b>CW GEARBOX, WING (330-7030)</b>
------------------------------------

**330-7030 Comer #LF227J (227.009) 1:1.35 ratio, 540 & 1000 RPM**

<b>Ref.</b>	<b>Part No.</b>	<b>Description</b>	<b>Qty.</b>
1	331-7135	Casing	1
2	331-7139	Crown Gear, Z23	1
3	331-564	Tapered Roller Bearing	2
4	331-974	Shim Kit	2
5	331-914	Snap Ring	2
6	331-559	Oil Cap	1
7	331-7136	Input Shaft, 1-3/4" Z20	1
8	331-9019	Oil Seal	1
9	331-7137	Cover	1
10	331-5012	3/8" Gas Solid Plug	1
11	250-0081	Bolt, M8 x 25	4
12	331-7140	Pinion Gear Z17	1
13	331-7124	Snap Ring	1
14	331-7015	Shim	1
15	331-7012	Tapered Roller Bearing	2
16	331-7125	Shim Kit	1
17	331-7138	Output Shaft	1
18	331-7007	Castle Nut	1
19	331-7117	Cotter Pin	1
20	331-7017A	Oil Filler Level Vent Plug, 4-1/2" UL	1
21	331-813	Castle Nut	1
22	331-7011	Oil Seal	1
23	331-7010	Sealing Lid	1
24	331-7028	Hub	1
25	331-814	Bevel Washer	1
26	331-7020	Flat Washer	1
251	331-812	Cotter Pin	1

**CCW GEARBOX, WING (330-7031)**

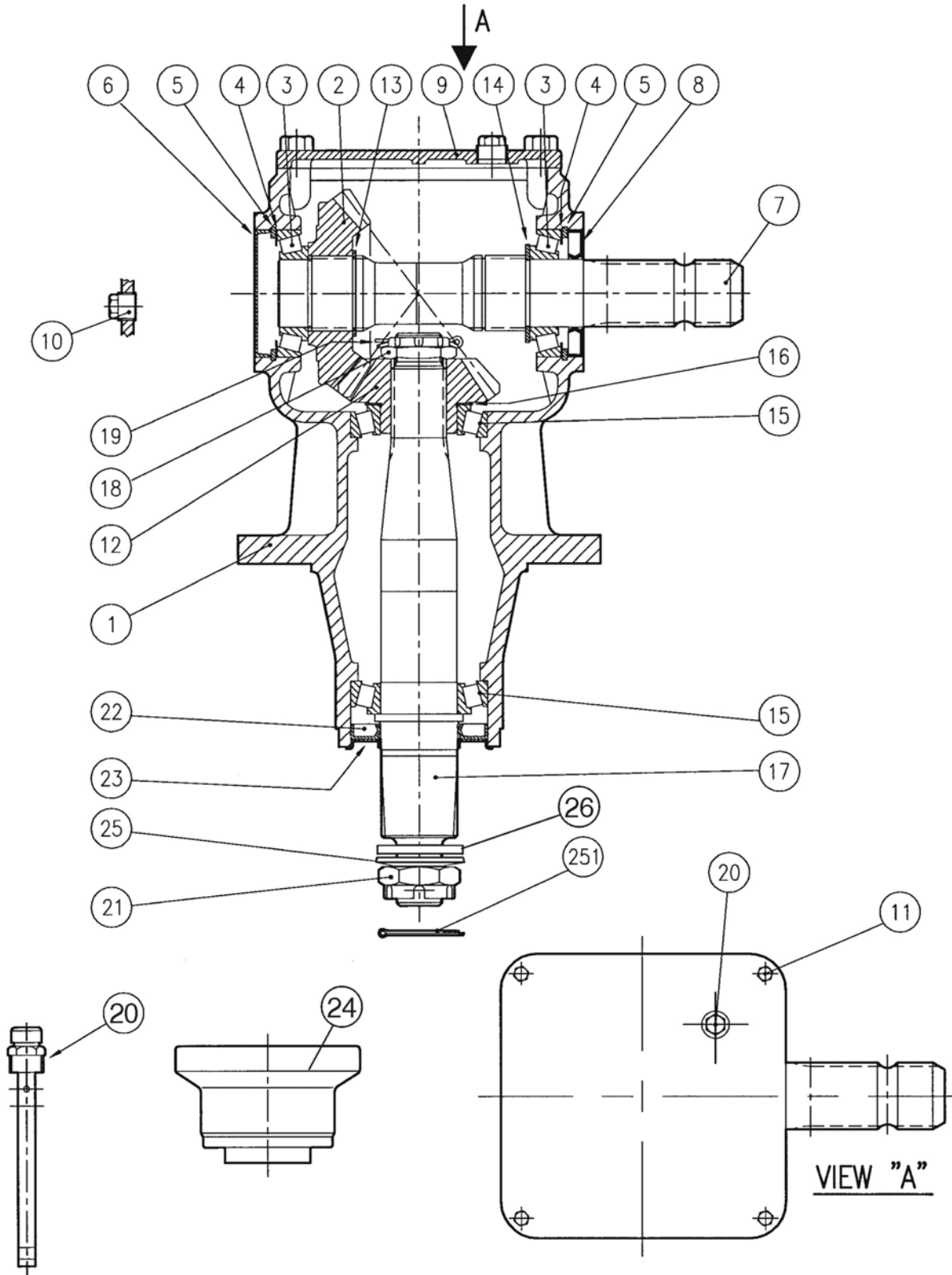


<b>CCW GEARBOX, WING (330-7031)</b>
-------------------------------------

**330-7031 Comer #LF227J (227.010) 1:1.35 ratio, 540 & 1000 RPM**

<b>Ref.</b>	<b>Part No.</b>	<b>Description</b>	<b>Qty.</b>
1	331-7135	Casing	1
2	331-7141	Crown Gear, Z23	1
3	331-564	Tapered Roller Bearing	2
4	331-974	Shim Kit	2
5	331-914	Snap Ring	2
6	331-559	Oil Cap	1
7	331-7136	Input Shaft, 1-3/4" Z20	1
8	331-9019	Oil Seal	1
9	331-7137	Cover	1
10	331-5012	3/8" Gas Solid Plug	1
11	250-0081	Bolt, M8 x 25	4
12	331-7142	Pinion Gear Z17	1
13	331-7124	Snap Ring	1
14	331-7015	Shim	1
15	331-7012	Tapered Roller Bearing	2
16	331-7125	Shim Kit	1
17	331-7138	Output Shaft	1
18	331-7007	Castle Nut	1
19	331-7117	Cotter Pin	1
20	331-7017A	Oil Filler Level Vent Plug, 4-1/2" UL	1
21	331-813	Castle Nut	1
22	331-7011	Oil Seal	1
23	331-7010	Sealing Lid	1
24	331-7028	Hub	1
25	331-814	Bevel Washer	1
26	331-7020	Flat Washer	1
251	331-812	Cotter Pin	1

**CW GEARBOX, CENTER, 540 RPM (330-7035)**

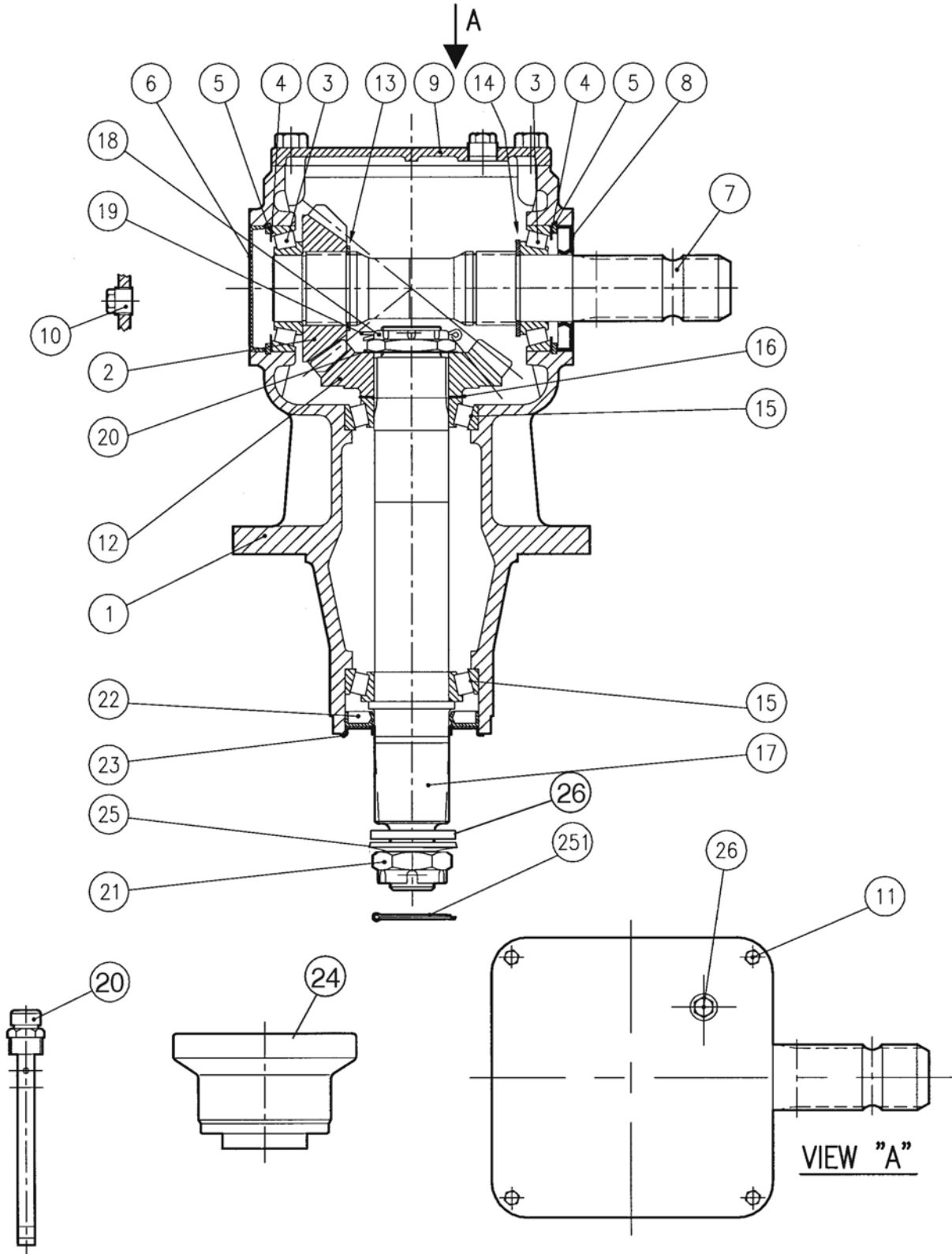


<b>CW GEARBOX, CENTER, 540 RPM (330-7035)</b>
---

**330-7035 Comer #LF227J (227.011) 1:1.5 ratio, 540 RPM units**

<b>Ref.</b>	<b>Part No.</b>	<b>Description</b>	<b>Qty.</b>
1	331-7135	Casing	1
2	331-7143	Crown Gear, Z24	1
3	331-564	Tapered Roller Bearing	2
4	331-974	Shim Kit	2
5	331-914	Snap Ring	2
6	331-559	Oil Cap	1
7	331-7136	Input Shaft, 1-3/4" Z20	1
8	331-9019	Oil Seal	1
9	331-7137	Cover	1
10	331-5012	3/8" Gas Solid Plug	1
11	250-0081	Bolt, M8 x 25	4
12	331-7144	Pinion Gear Z16	1
13	331-7124	Snap Ring	1
14	331-7015	Shim	1
15	331-7012	Tapered Roller Bearing	2
16	331-7125	Shim Kit	1
17	331-7138	Output Shaft	1
18	331-7007	Castle Nut	1
19	331-7117	Cotter Pin	1
20	331-7017A	Oil Filler Level Vent Plug, 4-1/2" UL	1
21	331-813	Castle Nut	1
22	331-7011	Oil Seal	1
23	331-7010	Sealing Lid	1
24	331-7028	Hub	1
25	331-814	Bevel Washer	1
26	331-7020	Flat Washer	1
251	331-812	Cotter Pin	1

**CW GEARBOX, CENTER, 1000 RPM (330-7036)**





<b>CW GEARBOX, CENTER, 1000 RPM (330-7036)</b>
--

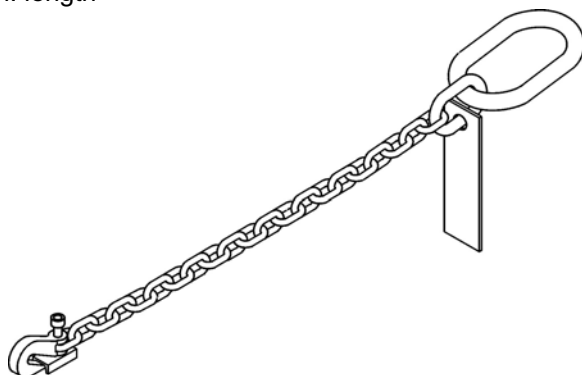
**330-7036 Comer #LF227J (227.012) 1.22:1 ratio, 1000 RPM units**

<b>Ref.</b>	<b>Part No.</b>	<b>Description</b>	<b>Qty.</b>
1	331-7135	Casing	1
2	331-7145	Pinion Gear, Z18	1
3	331-564	Tapered Roller Bearing	2
4	331-974	Shim Kit	2
5	331-914	Snap Ring	2
6	331-559	Oil Cap	1
7	331-7136	Input Shaft, 1-3/4" Z20	1
8	331-9019	Oil Seal	1
9	331-7137	Cover	1
10	331-5012	3/8" Gas Solid Plug	1
11	250-0081	Bolt, M8 x 25	4
12	331-7146	Crown Gear Z22	1
13	331-7124	Snap Ring	1
14	331-7015	Shim	1
15	331-7012	Tapered Roller Bearing	2
16	331-7125	Shim Kit	1
17	331-7148	Output Shaft	1
18	331-7130	Castle Nut	1
19	331-7117	Cotter Pin	1
20	331-7017A	Oil Filler Level Vent Plug, 4-1/2" UL	1
21	331-813	Castle Nut	1
22	331-7011	Oil Seal	1
23	331-7010	Sealing Lid	1
24	331-7028	Hub	1
25	331-814	Bevel Washer	1
26	331-7020	Flat Washer	1
251	331-812	Cotter Pin	1

## TRANSPORT KITS

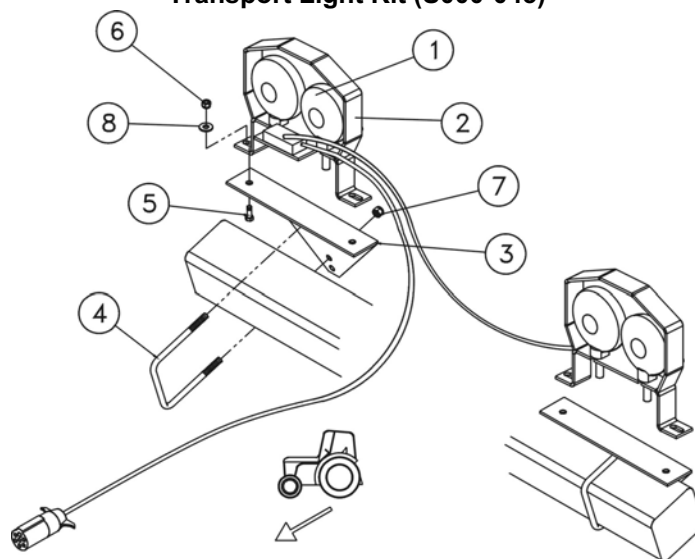
### Safety Chain (S000-010)

10,100 lbs. capacity, 59" min. length



**NOTE:** This safety chain is intended as an auxiliary attaching system per ASAE S338.3. The safety chain will help control the rotary cutter should it accidentally separate from the drawbar. **Do not use the safety chain for towing.** Replace the entire chain if any link or end fitting is broken, damaged or stretched.

### Transport Light Kit (S000-045)



Ref.	Part No.	Description	Qty.
1	S000-087	Transport light set, complete with harness	1
2	S000-101	Light Bracket	2
3	S000-046	Light bracket	2
4	258-110	U-bolt, 4" x 5-1/16" long x 3/8" UNC	2
5	250-006	Bolt, 5/16 x 3/4" UNC	4
6	270-020	Lock nut, 5/16" UNC	4
7	270-017	Lock nut, 3/8" UNC	4
8	256-020	Washer, 5/16"	4

Includes a 7-pin ag plug, wishbone harness and left and right hand dual lights. The lights are to be mounted with the red and amber facing to the rear with the amber to the outside, or in a vertical installation, with the amber on top.

## PARTS INDEX

Part Number	Page	Part Number	Page
100-3671	24, 25	207-0281	14
100-3681	24, 25	207-055	14
100-3691	24, 25	208-018	14
100-3701	22, 23	208-019	14
101-020	24, 25	209-017	14
101-021	25	210-003	14
101-025W	23	210-004	14
101-065	25	210-157	14
101-066	25	210-162	14
101-067	25	210-167	14
101-082	25	211-002	14
101-083	25	211-010	14
101-084	25	221-413	18
101-137	25	221-414	18
101-138	25	221-415	18
101-139	25	221-416	18
101-145	25	221-417	18
101-146	25	222-003	18
101-147	25	225-106	11
101-148	25	225-109	18
101-150	23	225-111	11
101-151	23	227-001	16
101-152	23	227-002	16
101-153	23	228-012	4
101-243	23, 25	229-007	10
108-003	28	232-600	12
108-0071	26, 28	232-800	12
108-018	28	233-050	6, 8
108-031	26, 28	250-002	4
108-043	22, 24, 26, 28	250-006	16, 49
108-044	24, 26	250-018	4, 6, 8, 14, 21
108-056	22	250-019	4, 21
108-068	26	250-020	11
111-101	24	250-023	4, 24, 25
111-184	24	250-026	18
111-185	22	250-050	18
111-186	24	250-055	6, 8
111-188	24	250-059	6, 8, 11, 18
111-204	26, 28	250-060	4, 10, 11
111-205	26, 28	250-061	6, 8, 18, 21
111-206	26, 28	250-0612	14
111-207	26, 28	250-084	4
111-237	26, 28	250-085	11
127-201	28	250-090	4
127-202	26	250-093	4
13-15	23, 25	250-111	4, 6, 8, 10
150-32	4	250-112	4, 6, 8, 10
158-03	21	250-129	11
201-005	14	250-145	11
201-008	14	250-201	6, 8, 11
201-010	14	251-008	16
205-007	14	251-018	20
206-009	14	251-020	20
207-019	14	251-151	16
207-020	14	251-201	20
207-024	14	255-009	14
207-025	14	255-013	4, 6, 8, 14
207-026	14	255-015	16
207-027	14	255-020	6, 8

256-001	4, 6, 8, 10, 11, 22, 24	331-7144	46
256-006	4, 11	331-7145	48
256-011	4, 6, 8, 10, 11, 18	331-7146	48
256-017	4, 11, 18, 21, 24	331-7148	48
256-018	4	331-741	40
256-020	16, 49	331-812	42, 44, 46, 48
257-003	20	331-813	42, 44, 46, 48
257-006	10	331-814	42, 44, 46, 48
257-008	10	331-821	40
257-032	14	331-857	40
257-054	6, 8	331-858	40
257-055	25	331-9019	40, 42, 44, 46, 48
258-110	49	331-902	40
262-005	4	331-909	40
262-006	4, 6, 8, 10, 24	331-914	40, 42, 44, 46, 48
262-011	6, 8	331-919	40
270-001	4, 6, 8, 10	331-920	40
270-004	4, 11	331-922	40
270-007	4, 6, 8, 10, 11, 18, 21	331-924	40
270-017	4, 11, 18, 21, 24, 25, 49	331-928	40
270-020	11, 49	331-940	40
270-025	4	331-941	40
270-028	16	331-942	40
271-005	6, 8, 10, 14, 22, 24	331-943	40
271-008	16	331-973	40
271-013	16	331-974	40, 42, 44, 46, 48
271-053	10	331-975	40
273-006	6, 8, 10, 14	331-976	40
280-200	4	331-977	40
300-012	4	331-978	40
302-012	10	331-979	40
302-013	10	340-6013	33, 34
302-015	6, 8, 10, 22, 24	340-6153	35
302-034	10	340-6163	35
330-7030	6, 8, 41, 42	340-645	31, 32
330-7031	6, 8, 43, 44	340-850	29, 30
330-7035	4, 45, 46	341-0680	34
330-7036	4, 47, 48	341-600	16
330-930	4, 40	341-60001	32
330-931	4, 40	341-60002	32
331-5012	42, 44, 46, 48	341-60003	32
331-559	42, 44, 46, 48	341-60004	32
331-564	42, 44, 46, 48	341-60005	32
331-7007	42, 44, 46, 48	341-60006	32
331-7010	42, 44, 46, 48	341-60007	32
331-7011	42, 44, 46, 48	341-60008	32
331-7012	42, 44, 46, 48	341-60009	32
331-7015	42, 44, 46, 48	341-60010	32
331-7017A	42, 44, 46, 48	341-60011	32
331-7020	42, 44, 46, 48	341-60012	32
331-7028	42, 44, 46, 48	341-60013	32
331-7117	42, 44, 46, 48	341-60014	30, 32
331-7124	42, 44, 46, 48	341-60015	32
331-7125	42, 44, 46, 48	341-60016	32
331-7135	42, 44, 46, 48	341-60017	32
331-7136	42, 44, 46, 48	341-60018	32
331-7137	42, 44, 46, 48	341-60019	32
331-7138	42, 44, 46	341-60020	30, 32
331-7139	42	341-60021	32
331-7140	42	341-60022	32
331-7141	44	341-60023	32
331-7142	44	341-60024	32
331-7143	46	341-60025	32

341-60026	32	341-80074	30
341-60028	32	341-802	30, 34-36, 38
341-60029	32	341-805	34, 35
341-60039	30	341-8086	30
341-6014	36, 38	341-8095	30
341-605A	34, 35	401-026	20
341-606	35	401-027	20
341-6073	35	401-032	20
341-608	35	450-050	21
341-610	34	450-104	21
341-615	34	520-1075	20
341-616	32, 34	520-1076	20
341-617	34	586-535	20
341-619	34	752-014	6, 8
341-6208	36	C000-001	4, 24
341-621	32, 34	C000-005	22, 24
341-622	34	C301-113	4
341-6228	36	C301-114	6, 8
341-6234	36	C301-118	4
341-6235	16	C301-140	6, 8
341-6247	36, 38	C301-203	16
341-6248	36, 38	C301-303	21
341-6251	38	C301-805	26
341-6280	36, 38	C302-104	11
341-6281	36	C302-106	11
341-6282	34	C302-805	28
341-6283	34	C303-220	20
341-6284	34	C303-222	20
341-6285	34	C310-105	4
341-6286	34	C310-108	10
341-6287	34	C310-112	4
341-6288	34	C310-113	10
341-630	36, 38	C310-115	4, 6, 8
341-6312	36, 38	C310-117	10
341-6313	38	C310-118	10
341-6316	36	C310-119	10
341-6317	36	C310-120	4
341-6318	36	C310-123	6, 8
341-6322	35, 36	C310-124	6, 8
341-6323	35, 36	C310-125	10
341-6324	34, 38	C310-127	4
341-653	34, 35	C310-131	10
341-660	34	C310-135	6, 8
341-80002	30	C310-140	6, 8
341-80007	30	C310-141	6, 8
341-80008	30	C310-142	10
341-80020	32	C310-143	4
341-80045	30	C310-144	4
341-80046	30	C310-145	6, 8
341-80047	30	C310-302	21
341-80048	30	C310-520	18
341-80049	30	C310-550	18
341-80050	30	C310-551	18
341-80055	30	C310-552	18
341-80056	30	C310-554	18
341-80057	30	C310-555	18
341-80058	30	C310-557	18
341-80059	30	C310-558	18
341-80061	30	C310-820	22
341-80062	30	C311-101	11
341-80067	30	C311-102	11
341-80069	30	C311-103	11
341-80070	30	C311-105	11

C311-106 .....	11
C312-119 .....	4
C312-152 .....	8
C312-157 .....	6
C312-300 .....	21
C312-301 .....	21
C312-302 .....	21
C314-101 .....	4
C314-150 .....	8
C314-155 .....	6
C314-202 .....	16
C314-203 .....	16
C314-204 .....	16
C314-205 .....	16
C320-132 .....	6, 8
C502-183 .....	10
C502-193 .....	24
C502-194 .....	24
CS01-130 .....	10
CS01-134 .....	10
S000-010 .....	49
S000-045 .....	49
S000-046 .....	49
S000-087 .....	49
S000-101 .....	49



