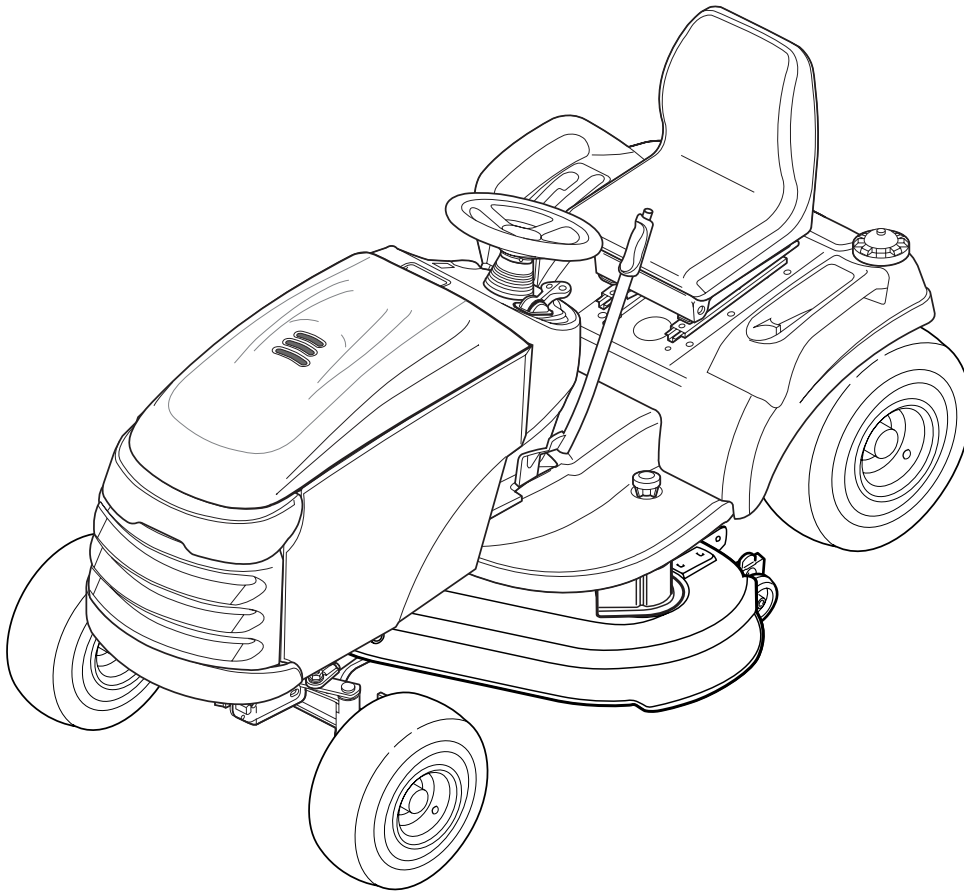


Parts Manual for

SNAPPER®

YARD TRACTORS ELECTRIC CLUTCH HYDRO DRIVE RMO ACS SERIES 0

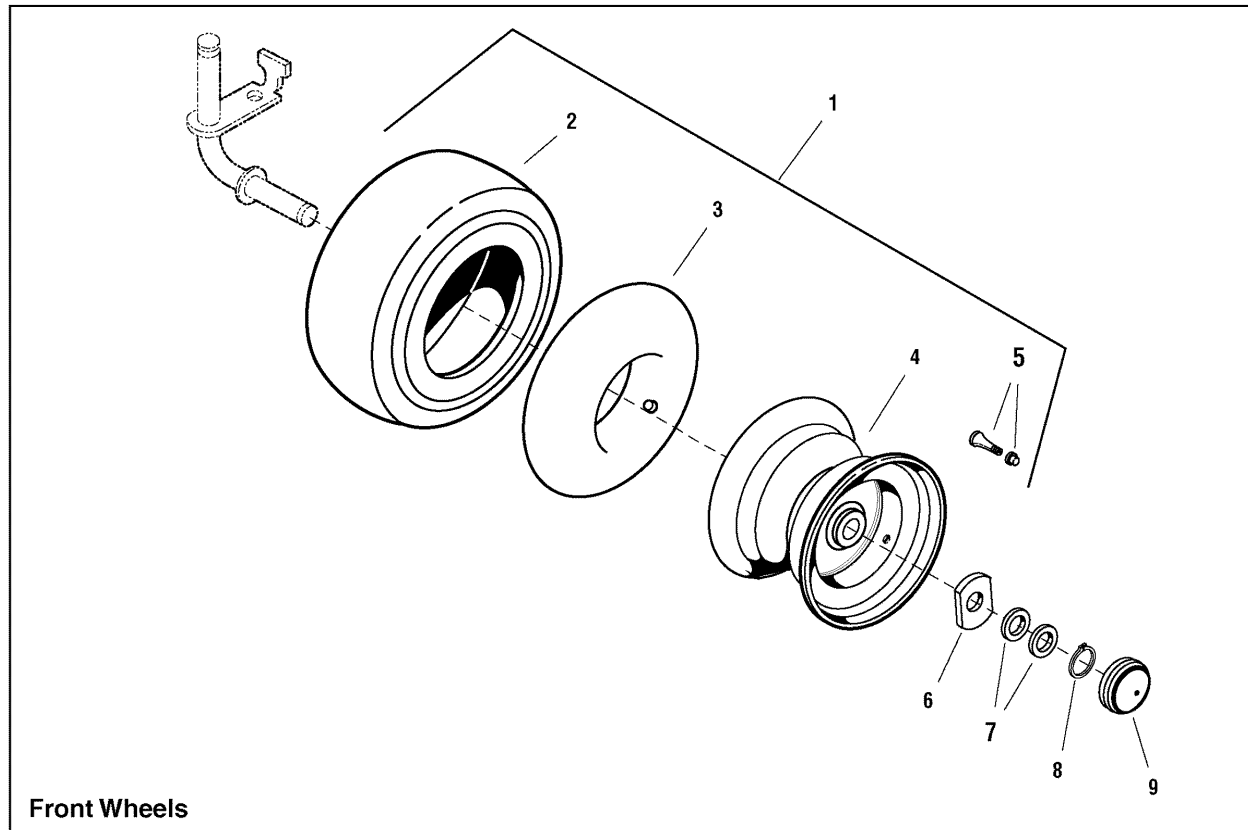


MODEL

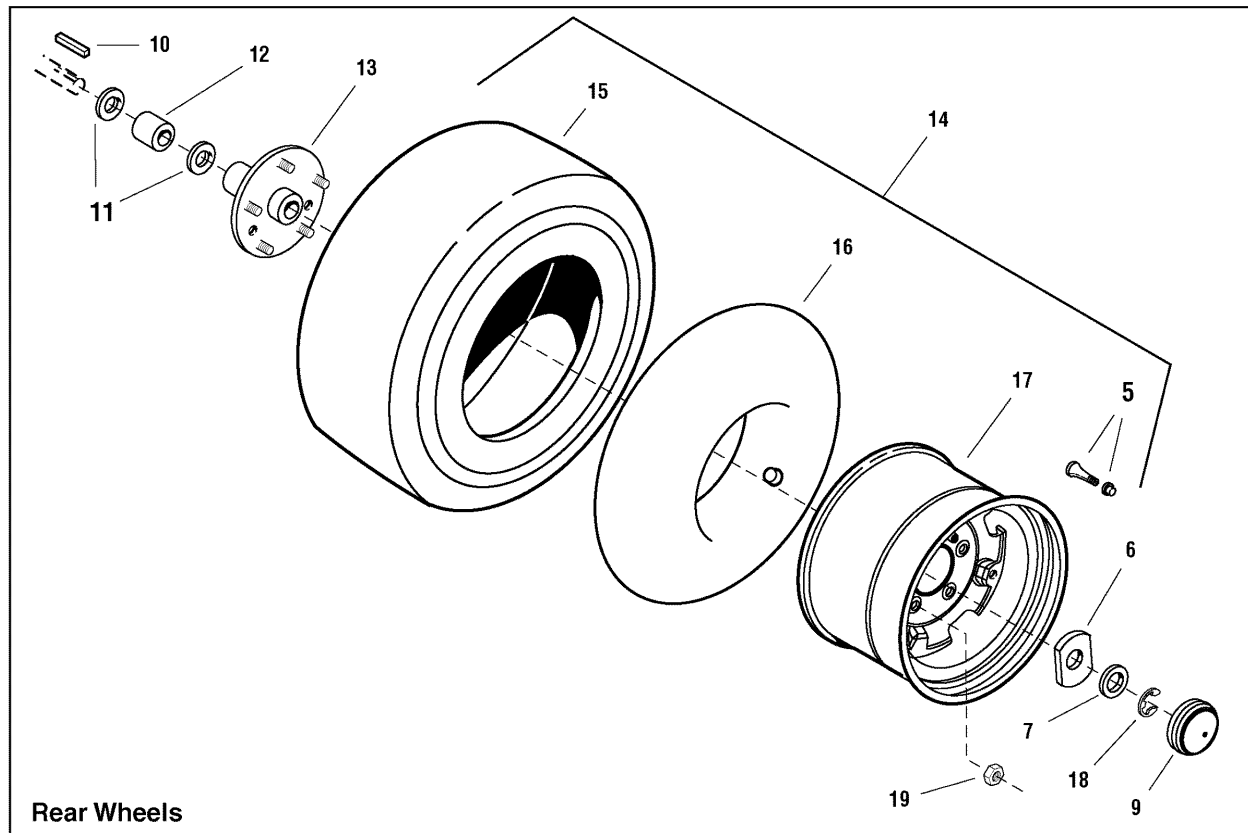
YT2044 (1694679)
YT2044 (2690268)
YT2144 (1694907)
YT21440 (2690457)
YT2250 (1694627)
YT22500 (2690269)
YT2300 (2690503)
YT2344 (2690505)
YT2344 (1694812)
YT2344 (2690657)
YT2344 (2690403)
YT2350 (1694817)
YT23500 (2690411)

SNAPPER® McDonough, GA, 30253 U.S.A.

PAGE	GROUP
4	Wheels & Tires Group
6	Steering Group - Manual Steering
8	Hood, Grille & Dash Group
10	Seat & Seat Deck Group
12	Frame Group - Manual Steering
16	Controls Group
20	Cruise Control Group
22	Transmission Group
26	TRANSMISSION SERVICE PARTS - Tuff Torq K-66L
32	Engine Group - 20HP, 22HP & 23HP Briggs & Stratton, Vanguard Twin
36	Decals Group
38	Lift Group - Manual Lift
40	44" Mower Deck - Belt, Idler Arm & Hitch
42	44" Mower Deck - Height Adjustment
46	44" Mower Deck - Housing, Arbors & Blades
50	50" Mower Deck - Clutch & Support Group
52	50" Mower Deck - Height Adjust Group
56	50" Mower Deck - Housing, Arbors & Blades
60	Electrical Group



Front Wheels



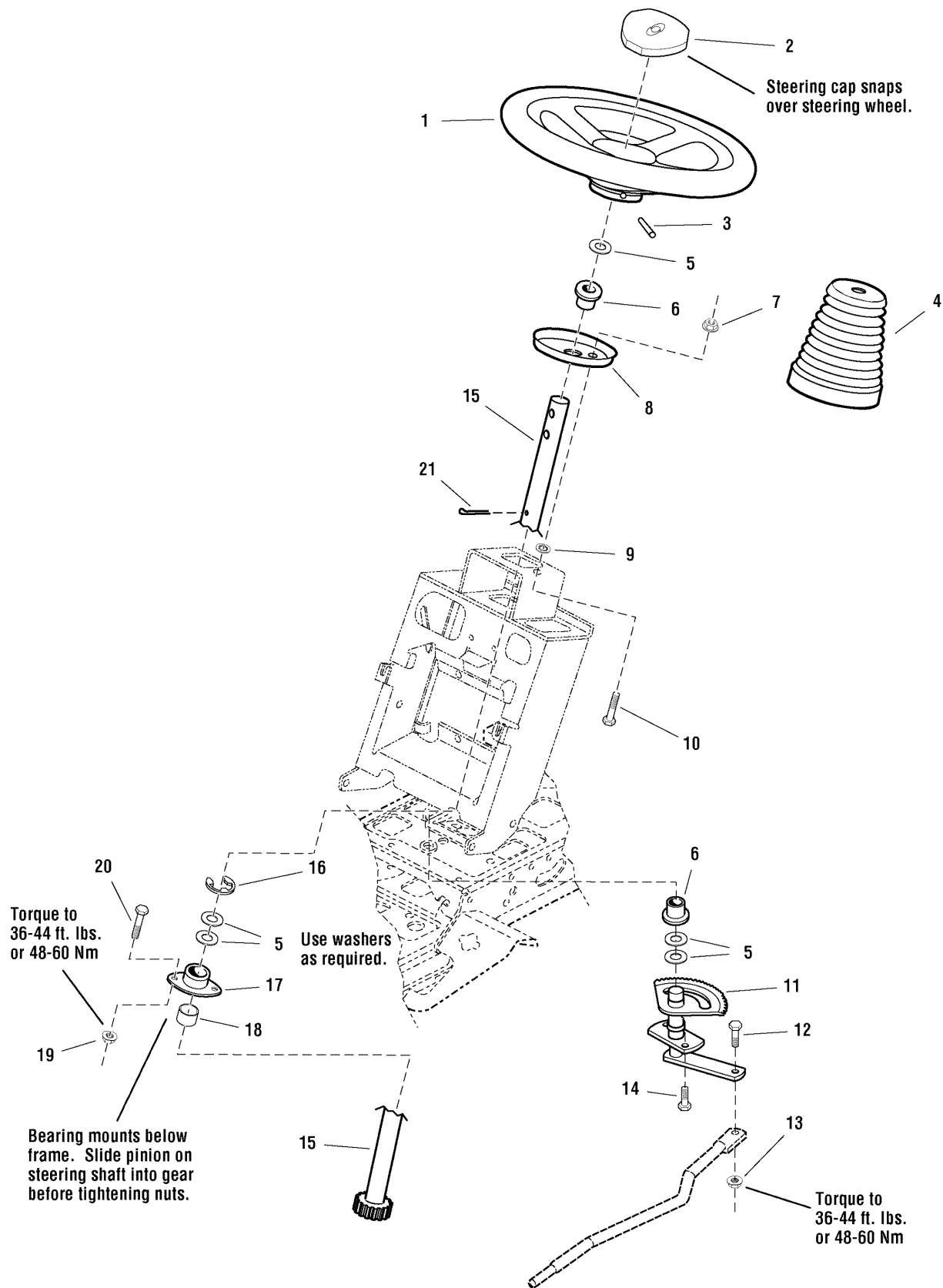
Rear Wheels

Wheels & Tires Group

Item	Part No	Qty	Description	Note
1	1722305	2	WHEEL & TIRE ASSEMBLY, Front	<i>(Includes Ref. Nos. 2, 3, 4 & 5)</i>
2	1722833	2	TIRE, 16 x 6-1/2 - 8 Super Turf, Front	
3	2164247	2	TUBE, Tire 16 x 6-1/2 - 8, Front	
4	1722834	2	WHEEL, 5 3/8 x 7-15/16, Front	
5	2172353	4	VALVE STEM & CAP ASSEMBLY	
6	1722726	4	WASHER, Special, 1 x 2-1/2	
7	1919394	6	WASHER	
8	2832577	2	RING, Shaft	
9	1722676	4	CAP, Hub Grey, 2-23/64	
10	2105337	2	KEY, HI PRO, 1/4 x 2	
11	2860200	4	WASHER	
12	1723112	2	SPACER, 1-1/16 x 1-1/2 x 1-23/32, Black	
13	1721400	2	PLATE & HUB ASSEMBLY, Rear Wheel w/Studs	
14	1722766	2	WHEEL & TIRE ASSEMBLY, Rear 23"	<i>(Includes Ref. Nos. 5, 15, 16 & 17)</i>
15	1722830	2	TIRE, 23 x 10-1/2 - 12 Super Turf, Rear	
16	2157638	2	TUBE, Tire 23 x 10-1/2 - 12, Rear	
17	1722831	2	WHEEL, 7 x 12, Rear	
18	2834712	2	RING, Shaft	
19	2177725	10	NUT, Hex 7/16-20, For Wheel Bolt	

Footnotes:

Steering Group - Manual Steering

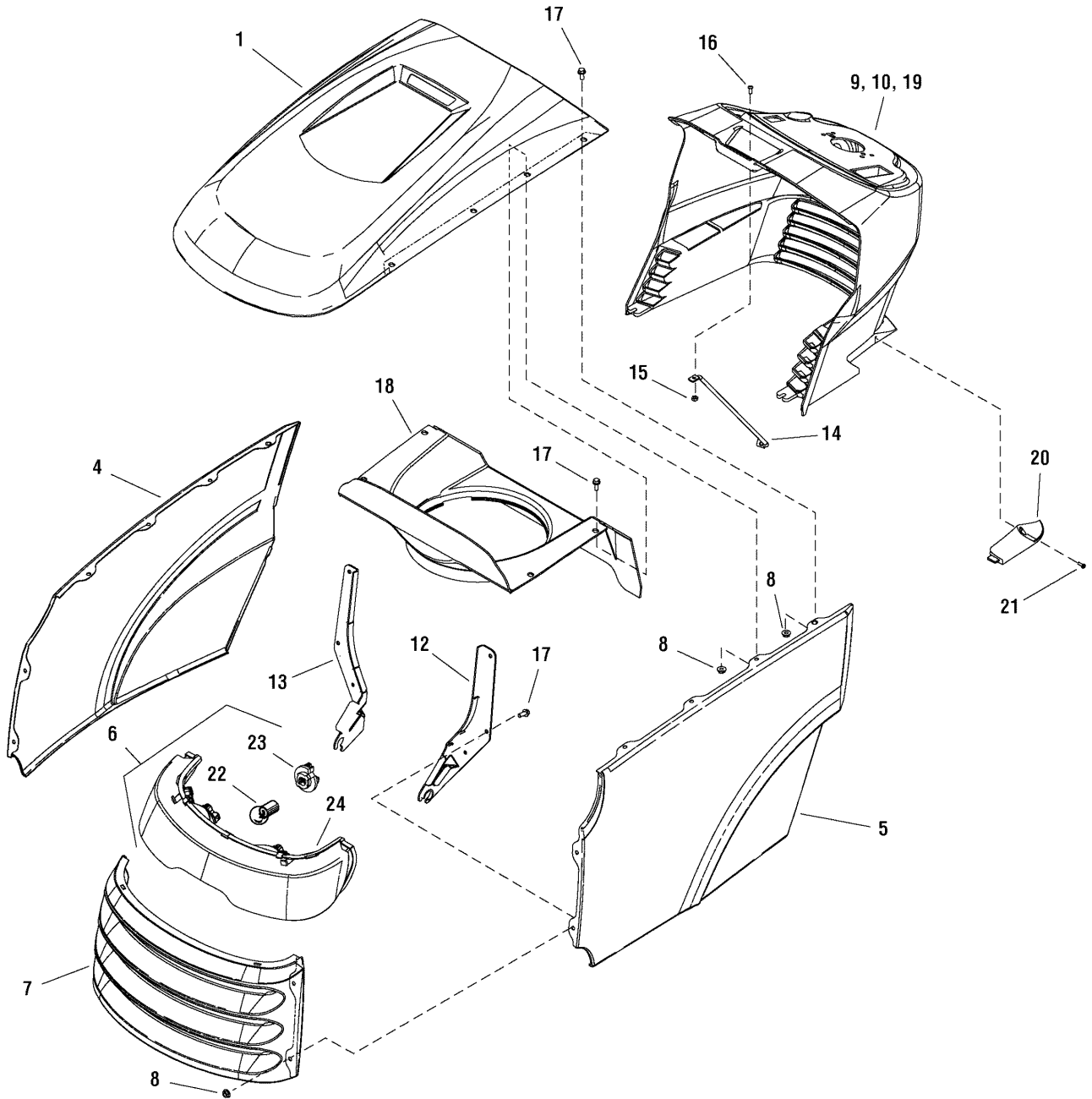


Steering Group - Manual Steering

Item	Part No	Qty	Description	Note
1	1722318	1	STEERING WHEEL, Straight, Shaft	
2	1725024	1	CAP, Steering Wheel, Plain	
3	1960540	1	PIN, Spring, 5/16 x 2-1/2	
4	1722749	1	COVER, Rubber, Upper Steering Shaft	
5	1960114	5	WASHER, 3/4	
6	2176440	2	BUSHING, 15/32 x 7/8 x 7/8, Nylon	
7	2828372	2	NUT, Hex KEPS 1/4-20	
8	1721736A	1	PLATE, Mounting Steering	
9	1960518	2	NUT, Push	
10	1960655	2	CARRIAGE BOLT, 1/4-20 x 1-1/4	
11	1722385	1	GEAR & SHAFT ASSEMBLY, Steering	
12	1960032	1	CAPSCREW, Hex Head, 3/8-16 x 1-1/4, Black	
13	1930645	1	NUT, Hex Flange Two-Way Lock, 3/8-16	
14	1664847	2	CAPSCREW, Hex Washer Head Taptite, 5/16-18 x 3/4	
15	1721626	1	SHAFT & PINION ASSEMBLY, Steering Manual	
16	1611710	1	RING, Clipping Extension	
17	1722459	1	BEARING, 3/4 x 1-11/16 x 13/16, 3" Long Housing	
18	1722461	1	SPACER, 3/4 x 1-1/16 x 3/8, Powder Metal	
19	1931211	2	NUT, Hex Flange Whiz Lock, 3/8-16, Small	
20	1933260	2	CAPSCREW, Hex Whiz Lock Flange, 3/8-16 x 3/4, Black	
21	1919314	1	PIN, Cotter, 1-1/4, Black	

Footnotes:

Hood, Grille & Dash Group

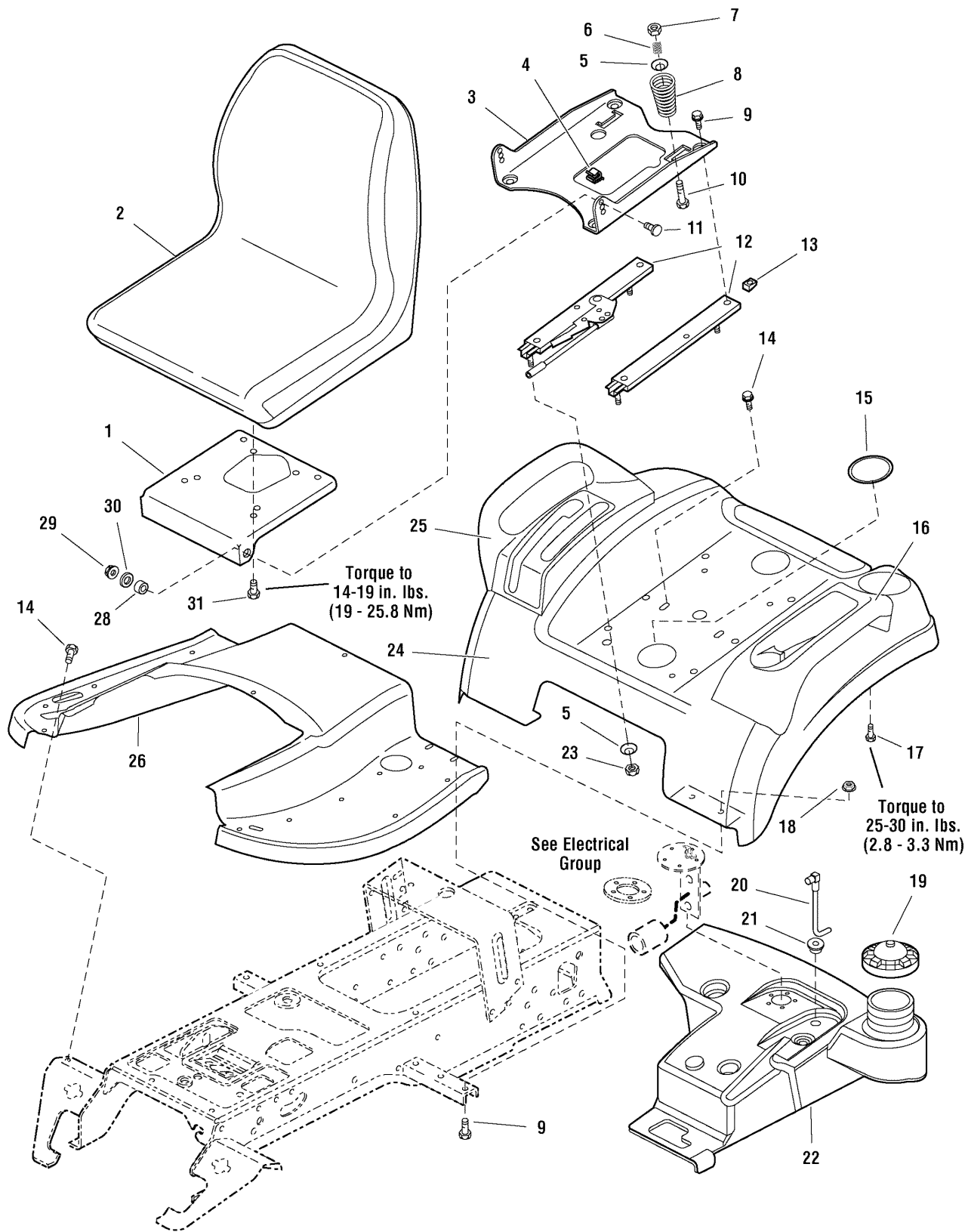


Hood, Grille & Dash Group

Item	Part No	Qty	Description	Note
1	1728031D	1	HOOD, W/Scoop	
4	1721804D	1	PANEL, R.H. Side	
5	1721803D	1	PANEL, L.H. Side	
6	1721810	1	HEADLIGHT ASSEMBLY	<i>(Includes Ref. Nos. 22, 23 & 24)</i>
7	1721802D	1	GRILLE	
8	1930641	12	NUT, Hex Flange 1/4-20 Whiz Lock	
9	1726827	1	DASHBOARD	<i>(Used only on YT & LT models)</i>
10	1726894	1	DASHBOARD, W/Hydraulic Lift Slot	<i>(Used only on GT models)</i>
12	1721808A	1	HINGE, Hood L.H.	
13	1721809A	1	HINGE, Hood R.H.	
14	1723123	1	ROD, Dash Support	
15	1933896	1	NUT, Hex Lock 10-24 w/Nylon Insert	
16	1960392	1	SCREW, Pan Head Phillips #10-24 x 1	
17	1960295	12	SCREW, Hex Whiz Lock Flange 1/4-20 x 5/8	
18	1733457A	1	DUCT, Air Inlet	
19	1726895	1	DASHBOARD, w/Buzzer Hole	<i>(Used only on Barons models)</i>
20	1722285	1	COVER, Dash	<i>(Used only on Barons models)</i>
21	1722607	1	SCREW, Pan Head Torx #8-16 x 1/2 Plastite	<i>(Used only on Barons models)</i>
22	1677371	4	BULB, Headlight	
23	1723451	4	SOCKET ASSEMBLY, Seal	
24	1722902	1	REFLECTOR, Headlight	

Footnotes:

Seat & Seat Deck Group

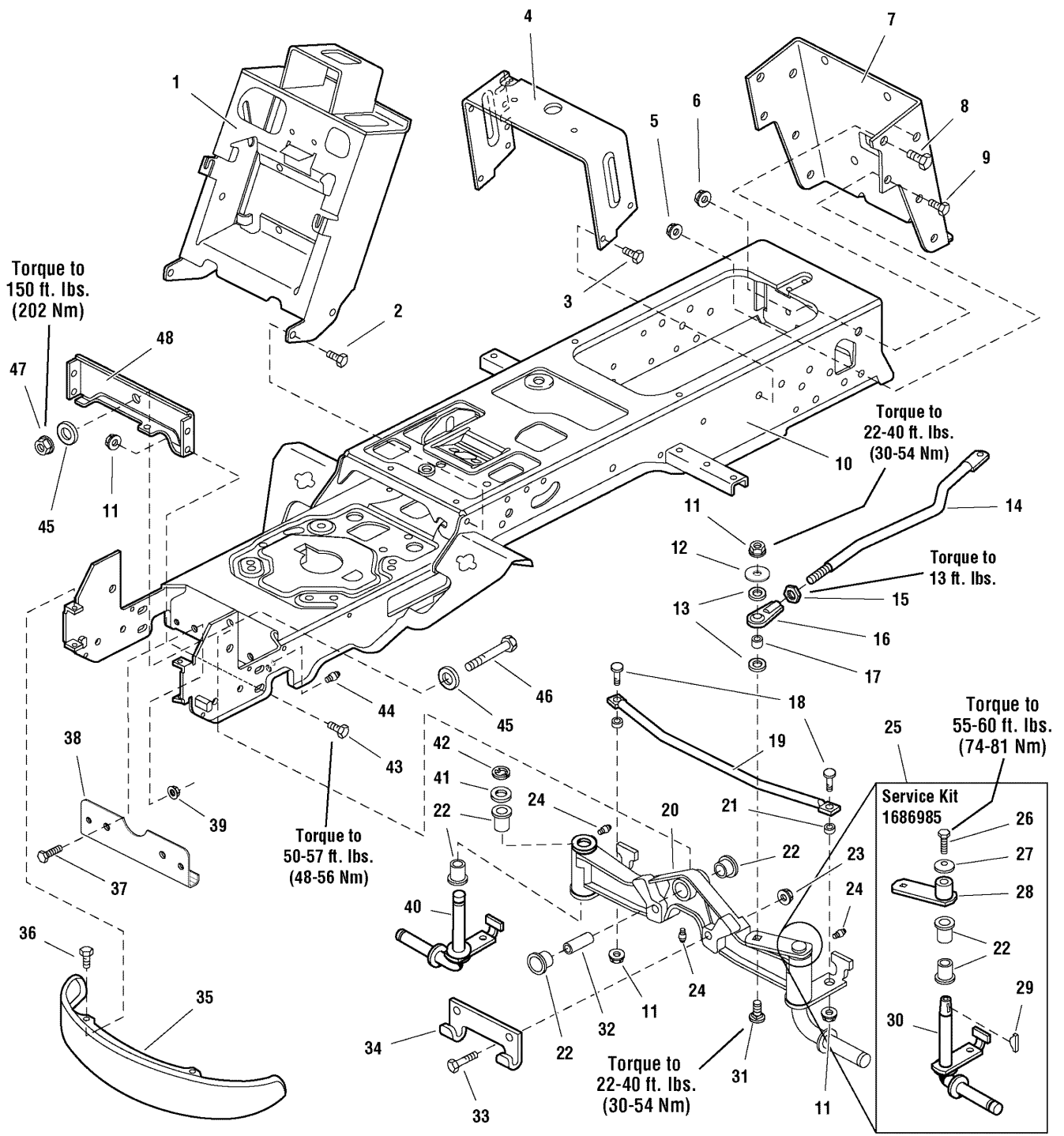


Seat & Seat Deck Group

Item	Part No	Qty	Description	Note
1	1722129A	1	BRACKET, 1-5/8 x 1-3/4	
2	1722307	1	SEAT, 18" Back	
3	1722128A	1	SUPPORT, Seat	
4	2172434	1	CLIP, Wire	
5	1709256A	2	WASHER, Spring, 5/16 x 1-1/4	
6	1714263	2	SPRING, Compression	
7	1919438	10	NUT, Hex Lock, ESNA Light, 5/16-18	
8	1717051	2	SPRING, Compression	
9	1930591	8	CAPSCREW, Hex Flange Whiz Lock, 5/16-18 x 3/4	
10	1931339	2	CARRIAGE BOLT, 5/16-18 x 2	
11	1931350	2	CARRIAGE BOLT, 3/8-16 x 1	
12	1722356	1	SLIDE, Seat	
13	1935255	4	NUT, Speed, 5/16-18, Lug Type	
14	1930601	4	CAPSCREW, Hex Washer Head Taptite, 5/16-18 x 5/8	
15	1722309	2	PLUG, Plastic	
16	1722109	1	POD, with Cup Holder, LH	
17	2960664	8	CAPSCREW, Hex Washer Head, 1/4-20 x 5/8	
18	1931277	4	NUT, Hex Flange Whiz Lock, 5/16-18	
19	1715917	1	CAP, Gas	
20	1722340	1	TUBE & ELBOW ASSEMBLY	
21	1654930	1	BUSHING, 3/8 x 9/16 x 5/8, Rubber	
22	1722432	1	TANK, Fuel	
23	1960636	8	NUT, Hex KEPS, 5/16-18	
24	1722106CD	1	DECK, Seat, Orange	
24	1722106D	1	DECK, Seat, Red	
25	1722108	1	POD, RH with 2 Slots	
26	1722105CD	1	TUNNEL, Orange	
26	1722105D	1	TUNNEL, Red	
27	1960667	4	SCREW, Hex Flange Whiz Lock, 5/16-18 x 1	
28	1663752	2	SPACER, 25/64 x 5/8 x 3/16, Hardened	
29	1930645	2	NUT, Hex Flange Two-Way Lock, 3/8-16	
30	1924940	2	WASHER, 3/8	
31	1960667	4	CAPSCREW, Hex Flange Whiz Lock Dog Point, 5/16-18 x 1	

Footnotes:

Frame Group - Manual Steering

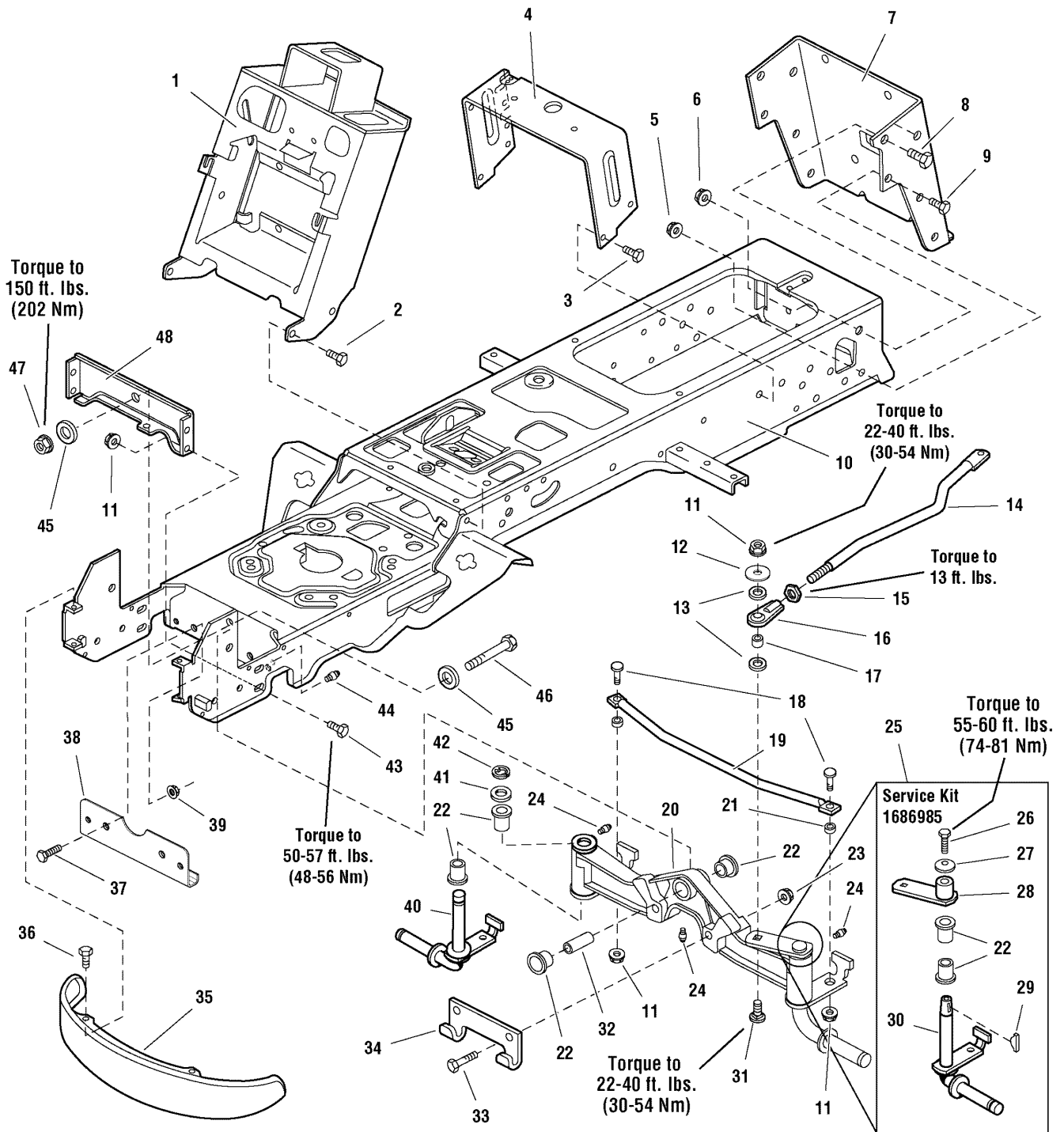


Frame Group - Manual Steering

Item	Part No	Qty	Description	Note
1	1724081A	1	TOWER & SUPPORT ASSEMBLY	
2	1923683	4	CAPSCREW, Hex Washer Head Taptite, 3/8-16 x 3/4	
3	1960541	4	CAPSCREW, Hex Washer Head Taptite, 5/16-18 x 3/4	
4	1723528A	1	SUPPORT, Seat Deck	
5	1928352	2	NUT, Hex Flange 3/8-16 Whiz Lock, Large	
6	1930644	2	NUT, Hex Flange Two-Way Lock, 1/2-13	
7	1722602A	1	BACKPLATE	
8	1923114	2	CAPSCREW, Hex Head 1/2-13 x 1, Black	
9	1921210	2	CAPSCREW, Hex Head 3/8-16 x 1, Black	
10	1726989A	1	FRAME ASSEMBLY, Front & Rear	
11	1930645	7	NUT, Hex Flange Two-Way Lock, 3/8-16	
12	1922755	1	WASHER, 3/8, Black	
13	1960103	2	WASHER, 3/8, Black	
14	1722541	1	LINK, Drag	
15	1919262	1	NUT, Hex Jam 1/2-20	
16	1702779A	1	JOINT, Ball	
17	1708236	1	SPACER, 3/8 x 1/2 x 5/8	
18	1931350	2	CARRIAGE BOLT, 3/8-16 x 1	
19	1722626A	1	ROD, Tie	
20	1722200A	1	AXLE ASSEMBLY w/LH Spindle	(Includes Ref. Nos. 22, 24, 41)
21	1611705	2	SPACER, 25/64 x 5/8 x 5/16, Powder Metal	
22	1721682	6	BUSHING, 31/32 x 1-1/4 x 3/4, Powder Metal	
23	1930650	2	NUT, Hex Flange Two-Way Lock, 7/16-14	
24	1704314	3	FITTING, Lube	
25	1686985	1	SPINDLE REPLACEMENT KIT, LH	(Includes Ref. Nos. 22, 26, 27)
26	2823485	1	CAPSCREW, 3/8-16 x 7/8, GR8	
27	1663151	1	WASHER, Spring, 3/8	
28	1725112	1	HUB & ARM ASSEMBLY	
29	2830671	1	KEY, Woodruff	
30	1724264	1	SPINDLE, LH	
31	1931352	1	CARRIAGE BOLT, 3/8-16 x 1-1/2	
32	1721752	1	SPACER, 11/16 x 21/32 x 2 3/32	
33	1927531	2	CAPSCREW, Hex Head, 7/16-14 x 2 G8	
34	1721918A	1	HOOK, "J"	
35	1721805A	1	BUMPER, Black	
35	1723502	1	BUMPER, Chrome	
36	1960086	4	SCREW, Truss Head Torque Drive, 5/16-18 x 7/8	

Footnotes:

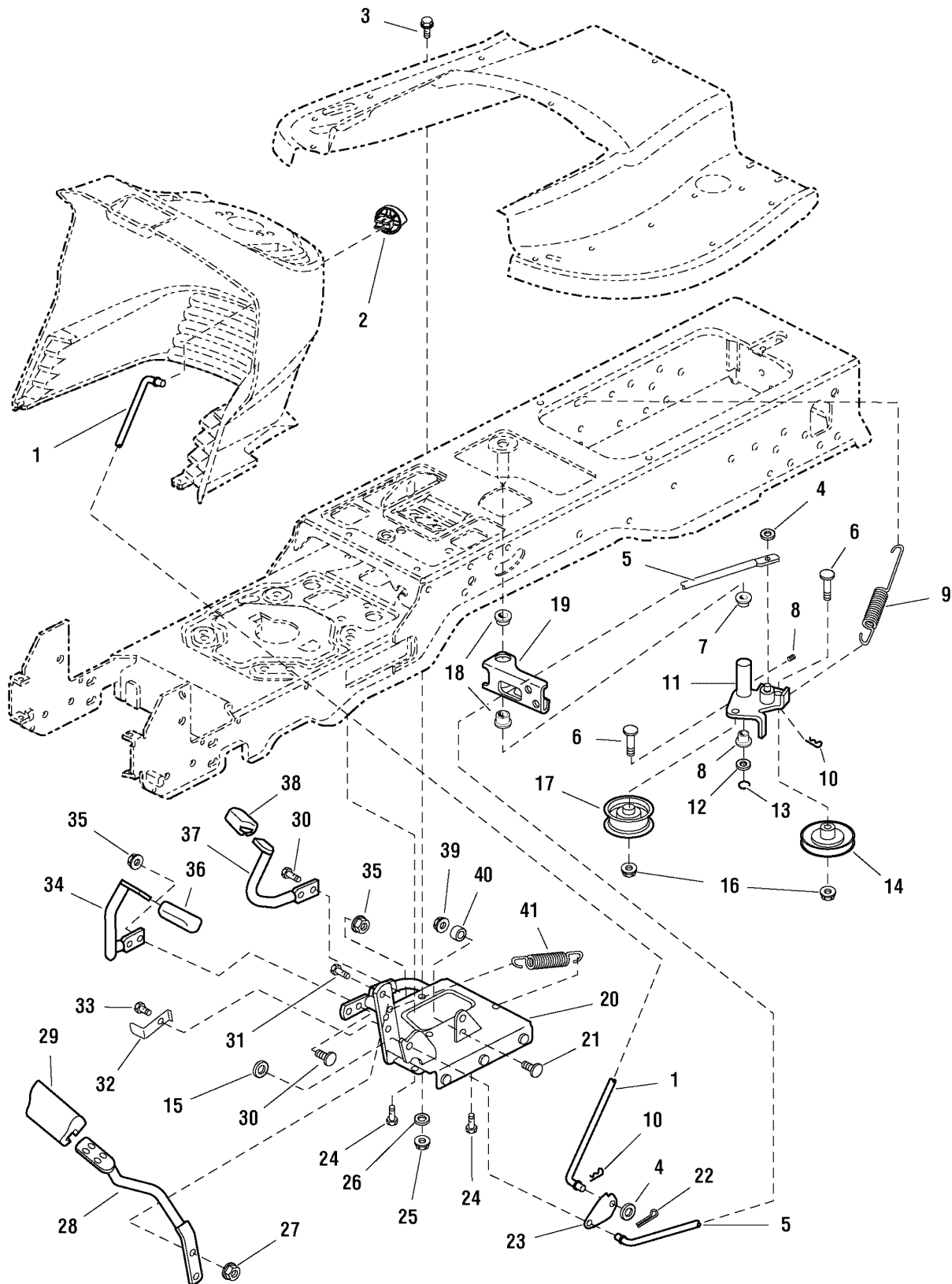
Frame Group - Manual Steering



Frame Group - Manual Steering

Item	Part No	Qty	Description	Note
37	1930591	2	CAPSCREW, Hex Whiz Lock, 5/16-18 x 3/4	
38	1724801A	1	PLATE, Axle Wear	
39	1931277	2	NUT, Hex Flange Whix Lick, 5/16-18	
40	1722199	1	SPINDLE, RH	
41	1919394	1	WASHER	
42	2932577	1	RETAINING RING	
43	1933260	4	CAPSCREW, Hex Flange Whiz Lock, 3/8-16 x 3/4	
44	2921133	2	FITTING, Grease for Wear Plate	
45	1960035	2	WASHER, 5/8	
46	2960645	1	CAPSCREW, Hex Head, 5/8-11 x 3-1/2	
47	2960646	1	NUT, Hex Flange Two-Way Lock, 5/8-11	
48	1722212A	1	PLATE, Axle	

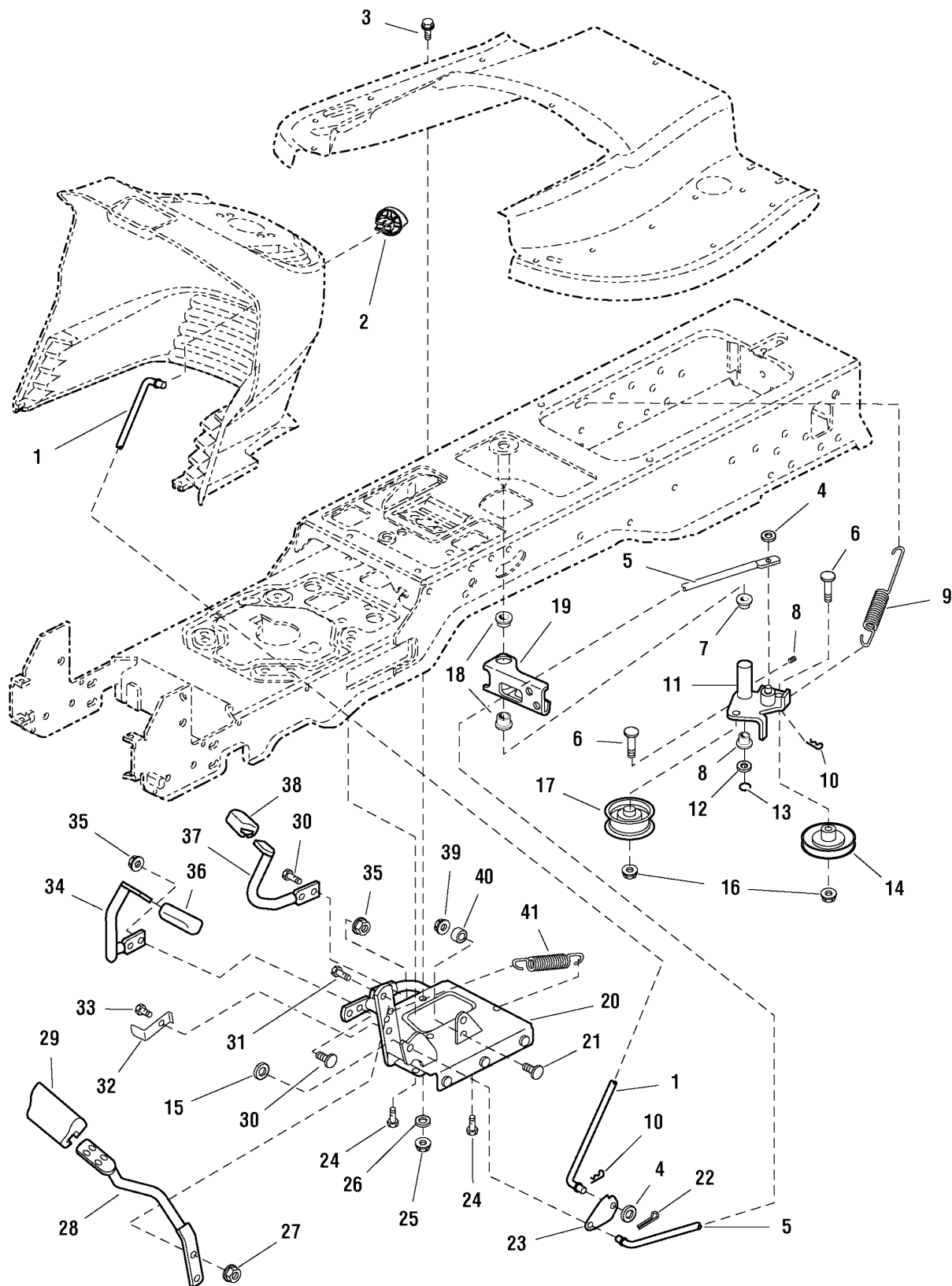
Footnotes:



Controls Group

Item	Part No	Qty	Description	Note
1	1721353	1	ROD, Brake Lock	
2	1721891	1	KNOB, Push On, Red Plastic "P"	
3	1930591	1	CAPSCREW, Hex Flange Whiz Lock, 5/16-18 x 3/4	
4	1919326	2	WASHER, 5/16, Black	
5	1721476	1	ROD, Brake	
6	1931353	2	CARRIAGE BOLT, 3/8-16 x 1 3/4	
7	1663114	2	BUSHING, 5/8 x 3/4 x 3/4, Nylon	
8	2821133	1	FITTING, Lube, 1/4	
9	1725250	1	SPRING, Extension	
10	1722460	3	PIN, Quick	
11	1724917	1	ARM & HUB ASSEMBLY, Idler	
12	1960020	1	WASHER, 5/8	
13	1704420	1	RING, Clipping Extension	
14	1721134	1	PULLEY, w/Bearing	
15	1924940	1	WASHER, 3/8	
16	1960687	2	NUT, Hex Flange ESNA, 3/8-16	
17	1721133	1	PULLEY, Idler	
18	1723237	2	BUSHING, 1 x 1-1/8 x 5/8, Nylon	
19	1722513	1	ARM, Brake	
20	1726763	1	PEDAL ASSEMBLY, Foot	
21	1931320	1	CARRIAGE BOLT, 1/4-20 x 1-1/4	
22	1918447	1	PIN, Cotter, Black	
23	1721354A	1	LATCH, Brake	
24	1664847	3	CAPSCREW, Hex Washer Head Taptite, 5/16-18 x 3/4	
25	1919438	1	NUT, Hex Lock ESNA Light, 5/16-18	
26	1919381	1	WASHER, 5/16, Black	
27	1927557	2	NUT, Hex Flange Whiz Lock Large, 5/16-18	
28	1722535A	1	PEDAL, Brake	
29	1721577	1	PAD, Brake Pedal	
30	1931334	4	CARRIAGE BOLT, 5/16-18 x 7/8	
31	1921333	2	CAPSCREW, 5/16-18 x 1	
32	1722083A	1	ACTUATOR, Switch 2.53" Long	
33	1923683	1	CAPSCREW, Hex Washer Head Taptite, 3/8-16 x 3/4	
34	1722070A	1	PEDAL, Forward	
35	1960636	4	NUT, Hex KEPS, 5/16-18	
36	1721675	1	PAD, Foot Pedal Forward	
37	1722071A	1	PEDAL, Reverse	

Footnotes:

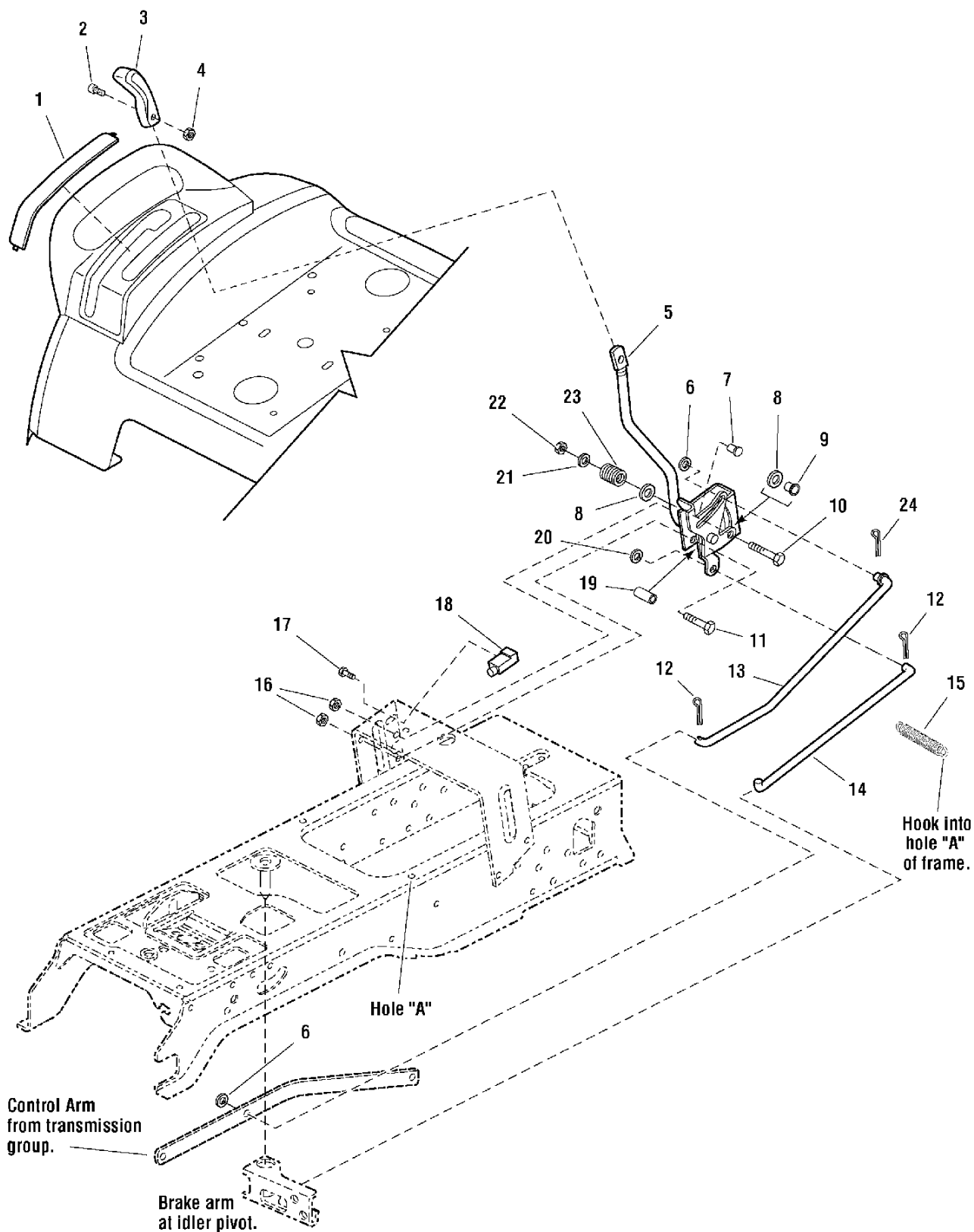


Controls Group

Item	Part No	Qty	Description	Note
38	1721674	1	PAD, Foot Pedal Reverse	
39	1920397	1	NUT, Hex Lock ESNA Light, 1/4-20	
40	1686612	1	CAM, Roller	
41	1721995	1	SPRING, Extension	

Footnotes:

Cruise Control Group

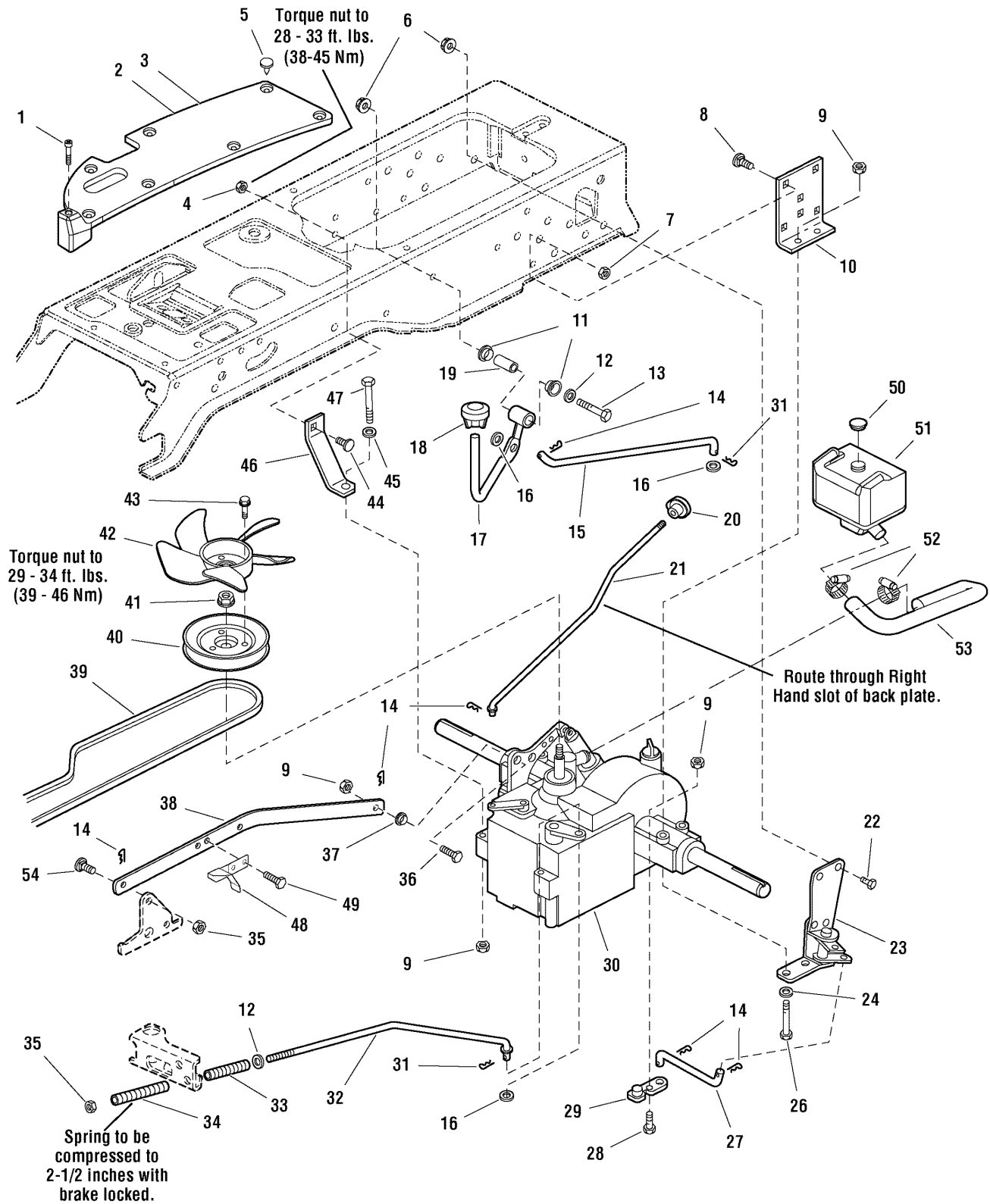


Cruise Control Group

Item	Part No	Qty	Description	Note
1	1722314	1	COVER, w/Cruise Icon	
2	1960666	1	SCREW, Torque Head Plus Socket Head, 1/4-20 x 7/8	
3	1722303	1	KNOB, Cruise	
4	1920397	1	NUT, Hex Lock ESNA Light, 1/4-20	
5	1722003	1	LEVER & BRACKET ASSEMBLY, Cruise	
6	1960103	2	WASHER, 3/8, Black	
7	1931333	1	CARRIAGE BOLT, 5/16-18 x 3/4	
8	1924361	2	WASHER, 1/2	
9	1709043	1	SPACER, w/Flange, 11/32 x 15/32 x 3/4	
10	1931342	1	CARRIAGE BOLT, 5/16-18 x 2-3/4	
11	1960273	1	CARRIAGE BOLT, 5/16-18 x 2-1/4	
12	1722460	2	PIN, Quick	
13	1722117	1	ROD, Cruise	
14	1722481	1	ROD, Return	
15	2159106	1	SPRING, Cruise Return to Frame	
16	1960636	2	NUT, Hex KEPS, 5/16-18	
17	1960001	2	CAPSCREW, Hex Washer Head Plastite, 10-14 x 5/8	
18	1717050	1	SWITCH, Push, Neutral Start, Gray	
19	1722080	1	SPACER, 11/32 x 5/8 x 1-13/32	
20	1919326	1	WASHER, 5/16, Black	
21	1919381	1	WASHER, 5/16, Black	
22	1919438	1	NUT, Hex Lock ESNA Light, 5/16-18	
23	1677746	1	SPRING, Compression	
24	1918447	1	PIN, Cotter	

Footnotes:

Transmission Group

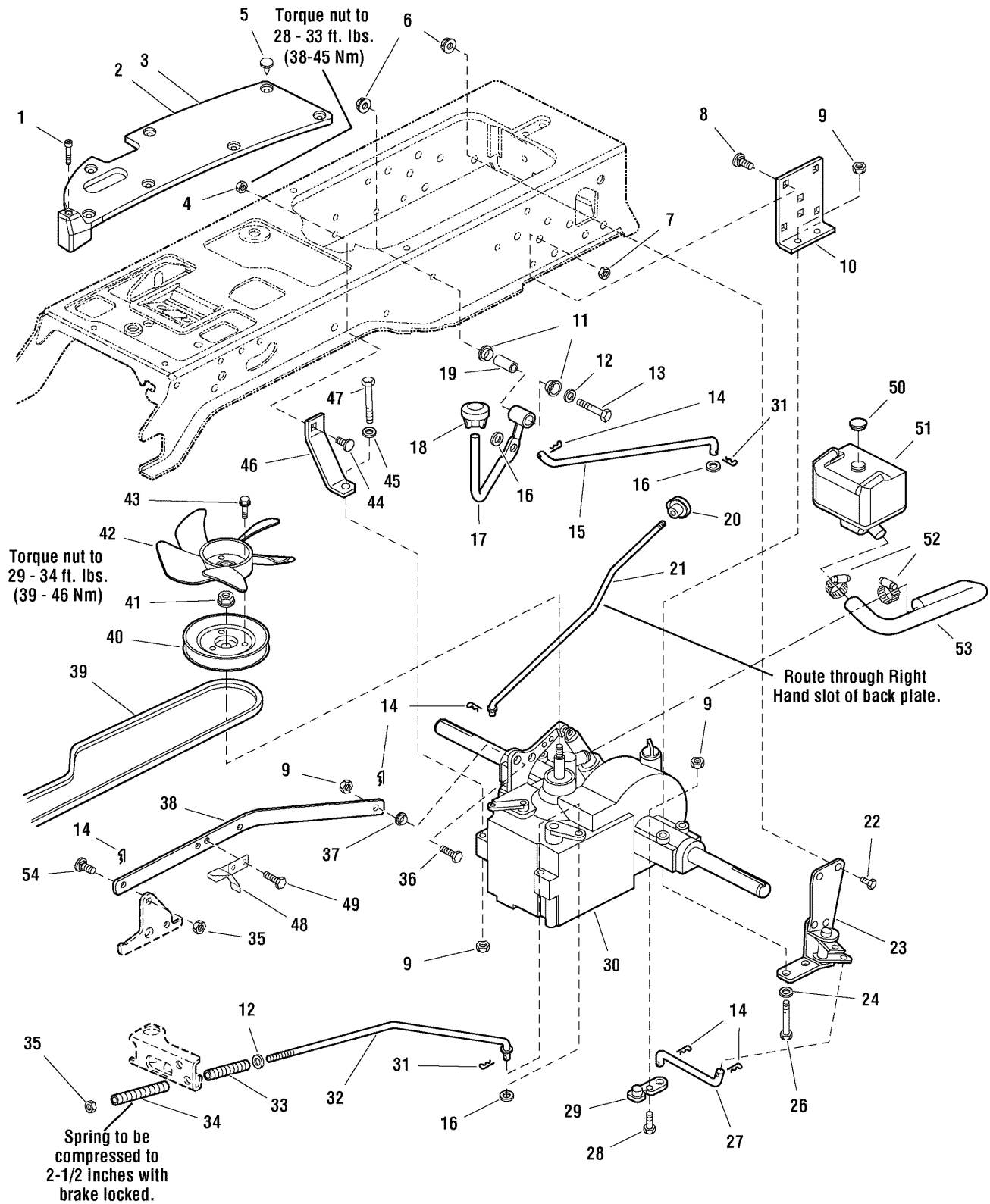


Transmission Group

Item	Part No	Qty	Description	Note
1	1960676	2	SCREW, Pan Head Torx Taptite, 1/4-20 x 1-1/4	
2	1722174	1	PAD, Footrest, LH, Differential Lock	
3	1722173	1	PAD, Footrest, RH	
4	1960636	1	NUT, Hex KEPS, 5/16-18	
5	1704351	15	FASTENER, 11/16" Long, Stem Plastic	
6	1928352	2	NUT, Hex Flange Whiz Lock, 3/8-16, Large	
7	1960637	6	NUT, Hex KEPS, 3/8-16	
8	1931350	6	CARRIAGE BOLT, 3/8-16 x 1	
9	1960686	6	NUT, Hex Flange ESNA, 5/16-18	
10	1721728A	2	SUPPORT	
11	1676148	2	BUSHING, 5/8 x 3/4 x 13/32, Powder Metal	
12	1924940	3	WASHER, 3/8	
13	1922130	1	CAPSCREW, Hex Head, 3/8-16 x 2-1/4	
14	1722460	7	PIN, Quick	
15	1722151	1	ROD, Differential Lock, 15-3/16 Long	
16	1918267	3	WASHER, 7/16	
17	1721360	1	ROD & TUBE ASSEMBLY, Differential Lock Pedal	
18	1716289	1	KNOB	
19	1669105	1	SPACER, 25/64 x 5/8 x 1-1/2, Hardened	
20	1723126	1	KNOB, 3 Sided Soft	
21	1721622	1	ROD, Free Wheel, 18-3/16 Long	
22	1921210	1	CAPSCREW, Hex Head, 3/8-16 x 1, Black	
23	1722903	1	PIVOT ASSEMBLY, Differential Lock	
24	1919326	2	WASHER, 5/16, Black	
26	1960590	4	CAPSCREW, Hex Head, 5/16-18 x 3	
27	1722152	1	ROD, Differential Latch, 2 Bends, 6-3/16 Long	
28	1921333	1	CAPSCREW, Hex Head, 5/16-18 x 1	
29	1722383	1	ARM, Differential Lock	
30	1733941	1	TRANSMISSION ASSEMBLY, K66 Transmission	
30	1733208	1	TRANSMISSION ASSEMBLY, K66 Transmission	<i>(Used on models with transmission expansion tank.)</i>
31	1918447	1	PIN, Cotter, 3/4, Black	
32	1721424	1	ROD, Brake, 17-27/64 Long	
33	1722684	1	SPRING, Compression	
34	8191045	1	SPRING, Compression	
35	1960687	2	NUT, Hex Flange ESNA, 3/8-16	
36	1960667	1	SCREW, Whiz 5/8-18 x 1	
37	1732088	1	SPACER	

Footnotes:

Transmission Group

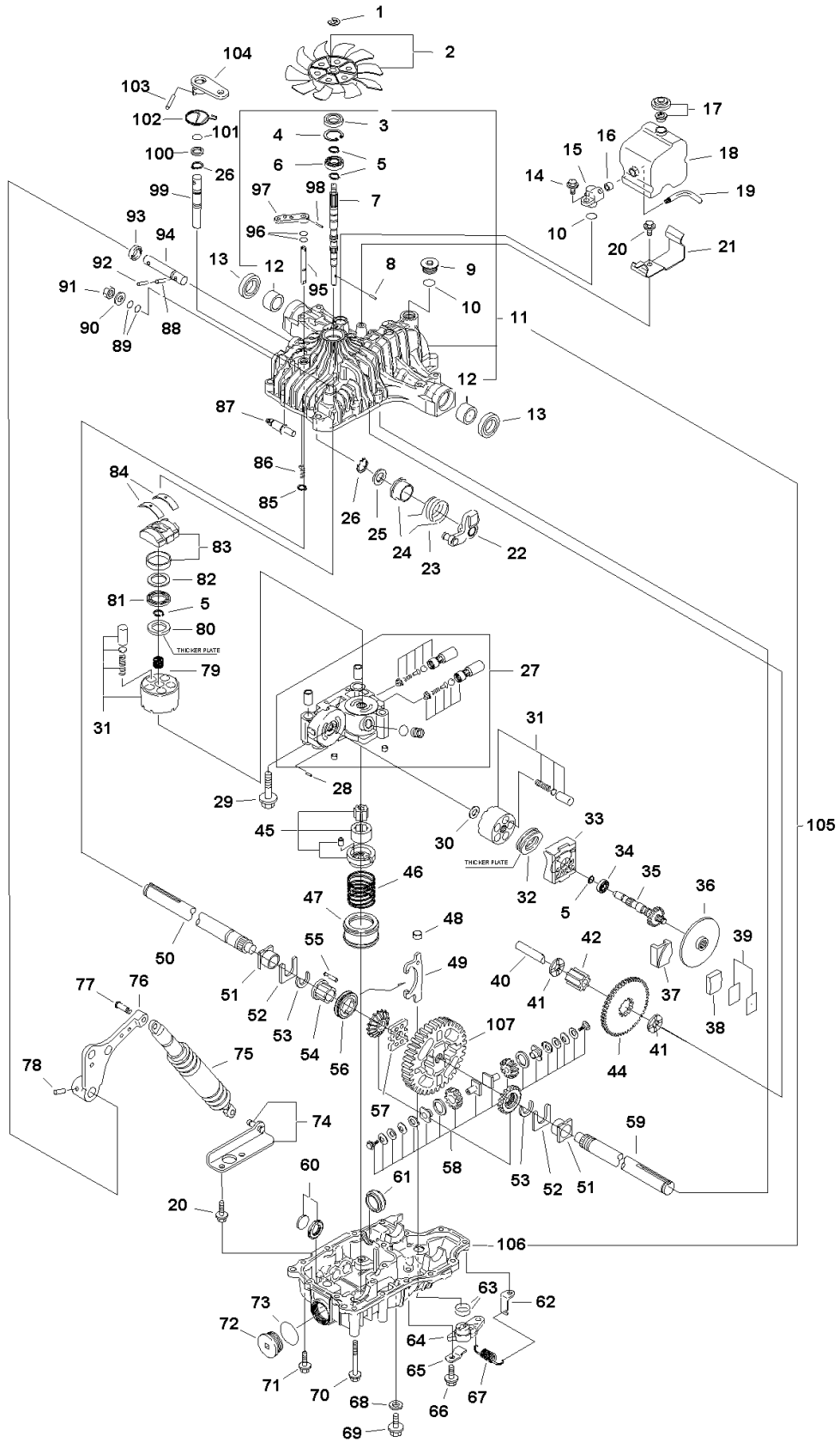


Transmission Group

Item	Part No	Qty	Description	Note
38	1732191	1	ARM & WELD PINS ASSEMBLY, Control K66	
39	1721392	1	V-BELT	
40	1722194	1	PULLEY & HUB ASSEMBLY, Transmission	
41	1719968	1	NUT, Hex Flange, M10-1.5, Nylon Insert	
42	1719233	1	FAN, 5 Blades, 3 Holes	
43	1933958	3	CAPSCREW, Hex Washer Head Taptite, 1/4-20 x 1-1/8	
44	1931335	1	CARRIAGE BOLT, 5/16-18 x 1	
45	1960141	1	WASHER, 5/16	
46	1721593A	1	STRAP, 4-1/4 Long	
47	1921719	1	CAPSCREW, Hex Head, 5/16-18 x 2-1/2	
48	1727215A	1	ACTUATOR, Switch	
49	1924856	2	CAPSCREW, Hex Head Taptite, 5/16-18 x 1/2	
50	1722711	1	CAP, Expansion Tank Plastic	<i>(Used on models with transmission expansion tank.)</i>
51	1722430	1	TANK, Oil Natural	<i>(Used on models with transmission expansion tank.)</i>
52	1723214	2	CLAMP, Hose Worm Drive #20 1-3/4"	<i>(Used on models with transmission expansion tank.)</i>
53	1722468	1	HOSE, Expansion Tank Formed	<i>(Used on models with transmission expansion tank.)</i>
54	1732129	1	BOLT, Shoulder, 3/8-16	

Footnotes:

TRANSMISSION SERVICE PARTS - Tuff Torq K-66L

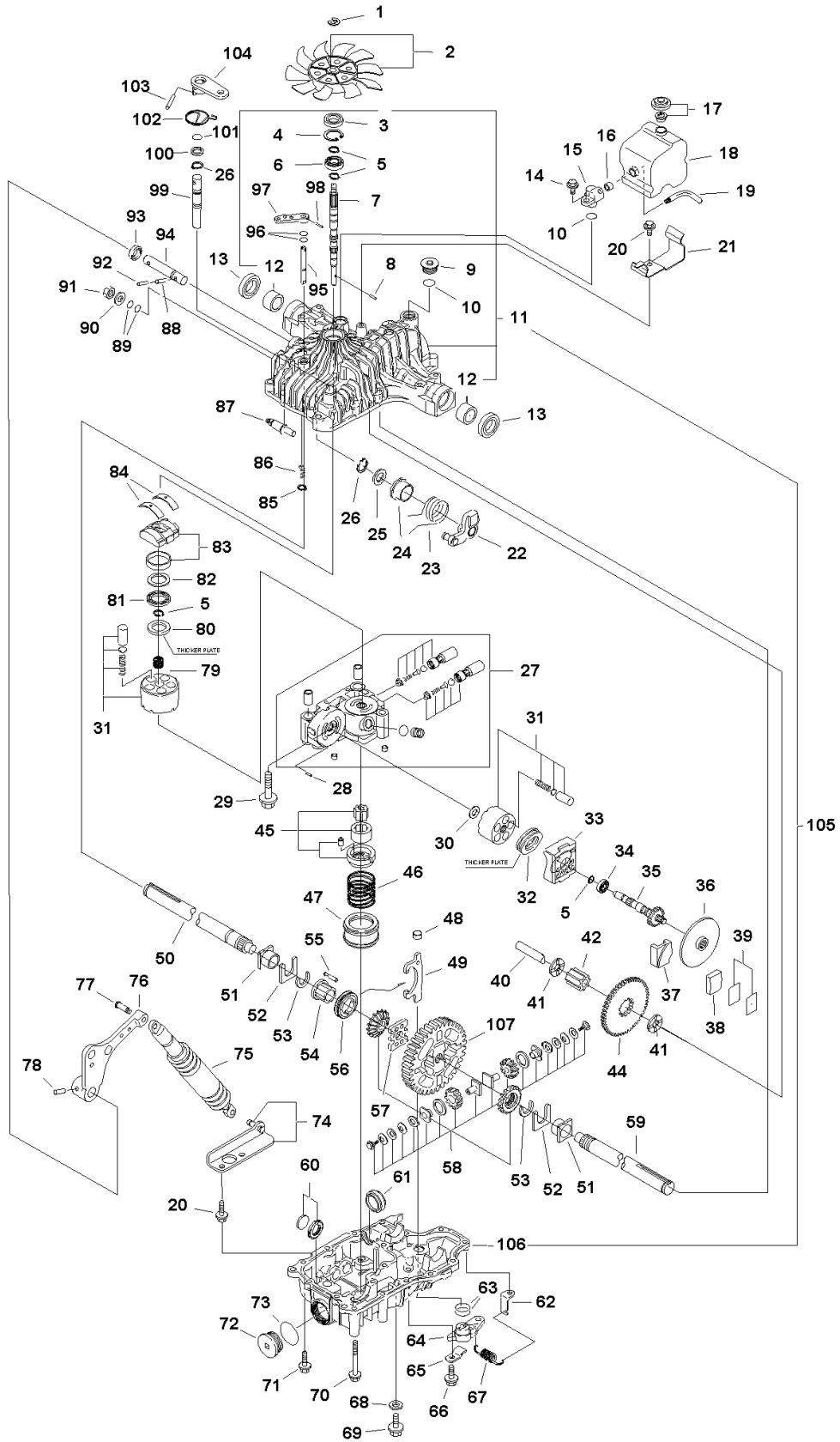


TRANSMISSION SERVICE PARTS - Tuff Torq K-66L

Item	Part No	Qty	Description	Note
1	7073756	1	RING E15	Was 1718076
2	7073753	1	FAN	Was 1724314
3	7073794	1	SEAL	Was 1708651
4	1708650	1	RING 35	
5	1708672	4	RING 15	
6	7073792	1	BEARING 6202UC3	Was 1718083
7	1724699	1	SHAFT, PUMP	
8	1722223	1	PIN 3 x 13.8	
9	1724696	1	CAP, M20B	
10	1707786	2	O-RING, P18	
11	1724692	1	HOUSING, UPPER	
12	1724693	2	BUSHING, 25.4	
13	1718264	2	SEAL S25.4 x 42 x 8	
14	1724695	1	BOLT, 8 x 20	
15	1724746	1	FITTING	
16	1724745	1	SEAL, 8	
17	1724740	1	VALVE, VENT 15	
18	1724742	1	TANK, RESERVOIR	
19	1724743	1	PIPE, 8	
20	1707890	3	SCREW, TAPPING	
21	1724744	1	BRACKET, TANK	
22	1724708	1	ARM, CONTROL	
23	1724709	1	SPRING, TORSION	
24	1721181	1	COLLAR, CONTROL	
25	1721966	1	WASHER 17 x 30 x 1	
26	1707912	2	RING	
27	1724697	1	CASE, CENTER	
28	7073784	1	PIN 3 x 9.8	Was 1718070
29	1724698	3	BOLT, 10 x 65	
30	1718084	1	WASHER 12 x 24 x 1	
31	7073786	2	CYLINDER BLOCK	Was 1718079
32	1708675	1	BEARING, THRUST	
33	1724700	1	HOUSING	
34	1724702	1	BEARING, 6302UC3	
35	1724701	1	SHAFT, MOTOR	
36	1724723	1	DISC, BRAKE	
37	1724726	1	ACTUATOR, BRAKE	

Footnotes:

TRANSMISSION SERVICE PARTS - Tuff Torq K-66L

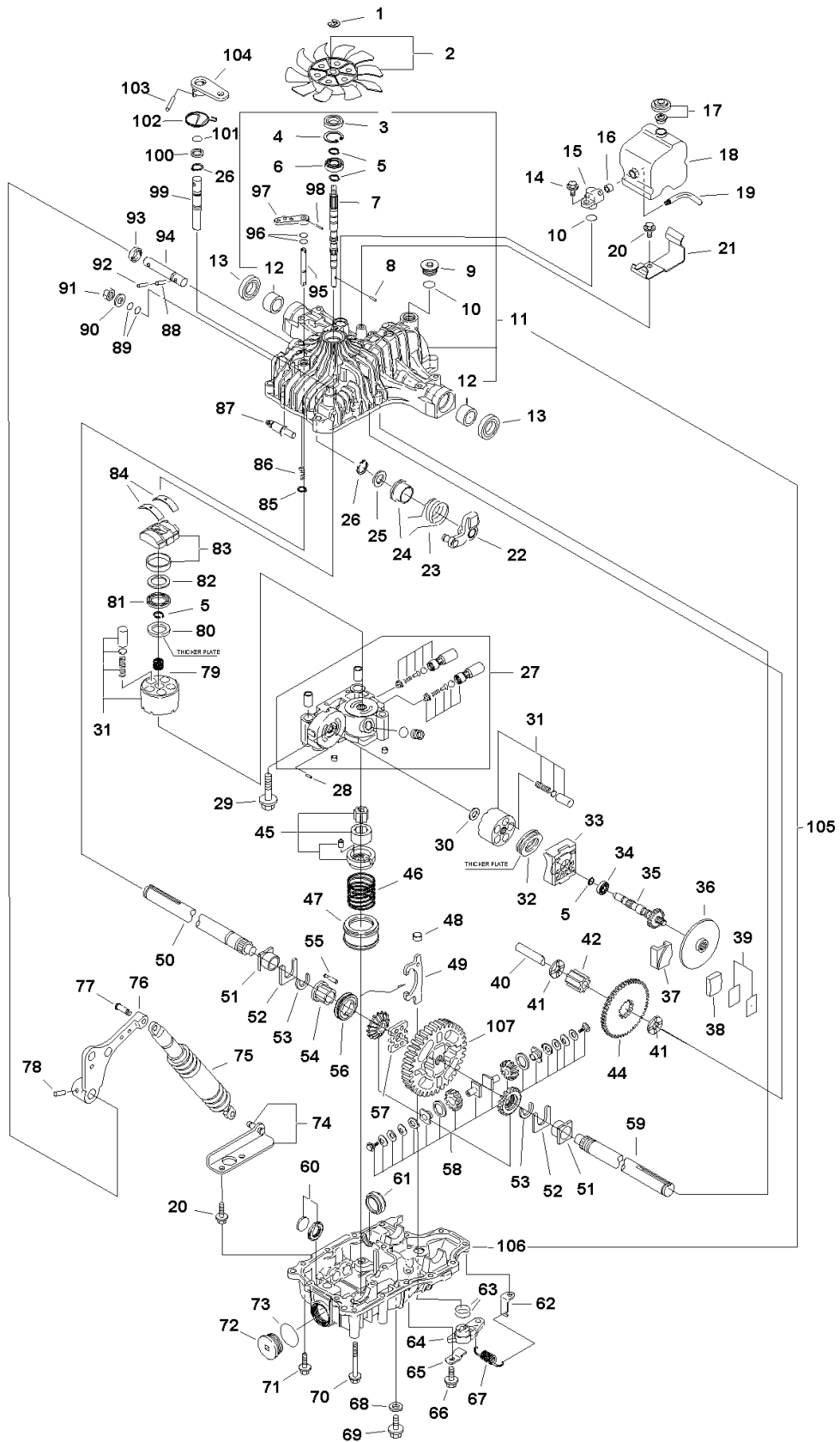


TRANSMISSION SERVICE PARTS - Tuff Torq K-66L

Item	Part No	Qty	Description	Note
38	1724724	1	SHOE, BRAKE	
39	1724725	1	SHIM SET	
40	1724714	1	SHAFT, FINAL PINION	
41	1724715	2	WASHER, 15 x 32 x 3.2	
42	1724717	1	PINION, FINAL	
44	1724716	1	GEAR, REDUCTION	
45	1724729	1	PUMP, CHARGE	
46	1724730	1	SPRING, CHARGE PUMP	
47	1725633	1	FILTER (25)	
48	1724733	1	FORK, PIVOT	
49	1724731	1	FORK, DIFF LOCK	
50	1724719	1	SHAFT, AXLE RH #1	
51	1720860	2	BUSHING	
52	1720858	2	THRUST WASHER	
53	1720859	2	RING	
54	1724720	1	COLLAR, 25.4	
55	1724737	8	PIN, DIFF LOCK	
56	1724736	1	SLIDER, DIFF LOCK	
57	1724738	1	PLATE, DIFF LOCK	
58	1718262	1	DIFFERENTIAL GEAR KIT	
59	1724718	1	SHAFT, AXLE LH #1	
60	1718065	1	MAGNET	
61	1720761	1	FILTER (25)	
62	1724734	1	HOOK, SPRING	
63	1724739	2	PACKING, 1AG25	
64	1724732	1	ARM, DIFF LOCK	
65	1724735	1	PLATE, ARM	
66	1720788	2	BOLT 10 x 12	
67	1724741	1	SPRING, RETURN	
68	1720796	2	WASHER, SEAL	
69	1720788	1	BOLT 10 x 12	
70	1718226	5	BOLT, 8 x 75	
71	1707789	5	SCREW, TAPPING	
72	1720807	1	CAP (M40)	
73	1720808	1	PACKING 1A 2040	
74	1724704	1	STAY	
75	1718039	1	SHOCK ABSORBER	

Footnotes:

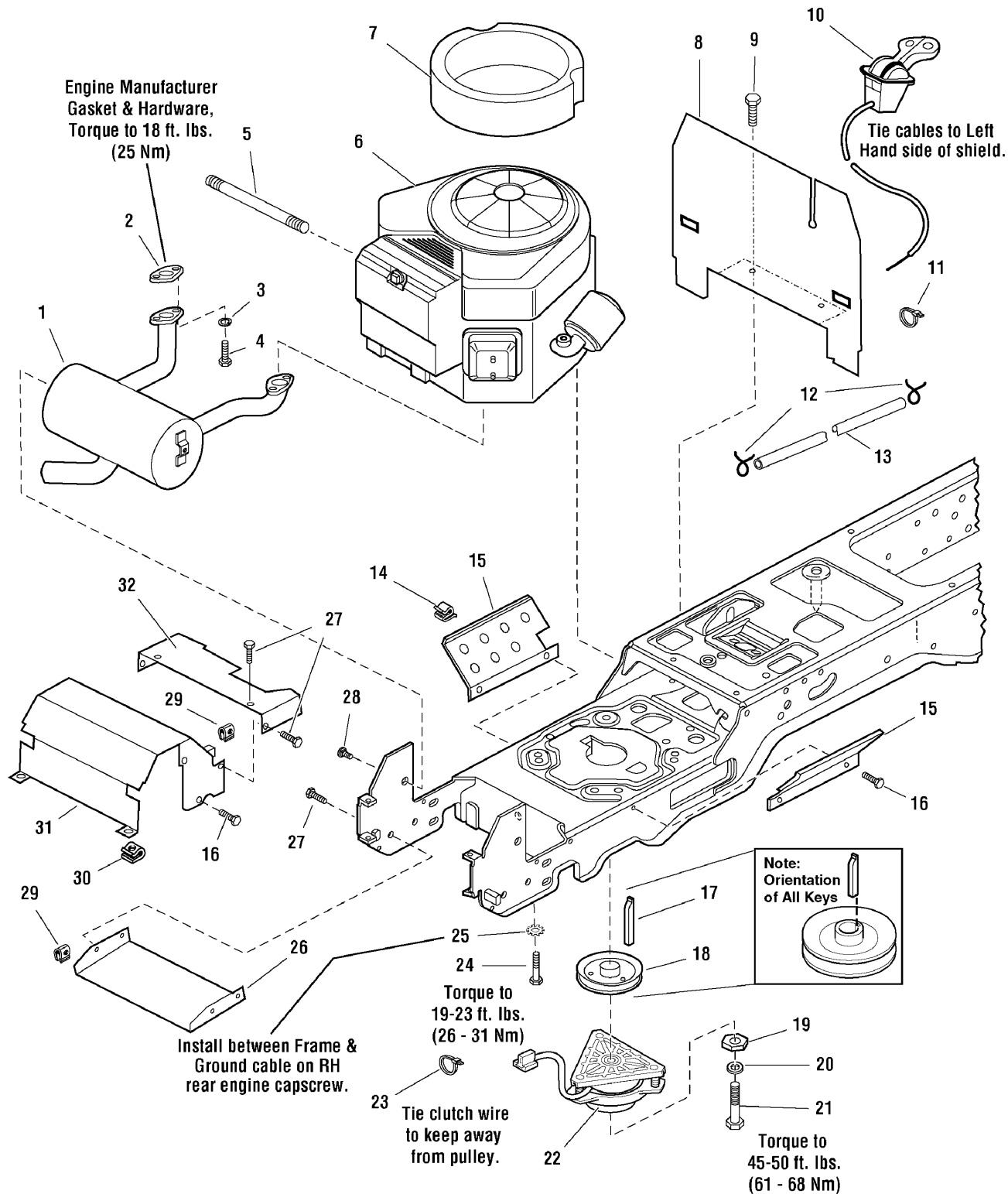
TRANSMISSION SERVICE PARTS - Tuff Torq K-66L



TRANSMISSION SERVICE PARTS - Tuff Torq K-66L

Item	Part No	Qty	Description	Note
76	1724706	1	LEVER, CONTROL	
77	1724705	1	PIN	
78	1724707	1	PIN, 3.5 x 25	
79	1718234	1	PUMP SHAFT	
80	1721267	1	THRUST PLATE A	
81	1718237	1	BEARING K81106	
82	1718239	1	THRUST PLATE B	
83	1724703	1	PLATE, SWASH	
84	1718089	2	THRUST METAL	
85	7073787	1	RING	Was 1718061
86	1708684	1	SPRING	
87	1724711	1	FULCRUM, ECCENTRICIT	
88	1718097	1	PIN 6.0A x 25	
89	1707879	2	PACKING	
90	1708689	1	WASHER	
91	1708692	1	NUT 12	
92	1724712	1	PIN, 4 x 28	
93	1718120	1	SEAL TC162606	
94	1724710	1	SHAFT, CONTROL	
95	1720838	1	SHAFT (BYPASS)	
96	7073793	2	PACKING	Was 1708691
97	7073750	1	LEVER, BYPASS	Was 1720418
98	1707839	1	PIN 3.0A x 20	Was 1720421
99	1724727	1	SHAFT, BRAKE HL #10	
100	1724728	1	WASHER, 16 x 23 x 1.6	
101	7073763	1	PACKING	Was 1708690
102	1724722	1	SPRING, BRAKE	
103	1718100	2	PIN 6.0A x 4.0	
104	1724721	1	ARM, BRAKE	
105	1724691	1	HOUSING, COMPLETE SET	
106	1724694	1	HOUSING, LOWER	
107	1724713	1	GEAR, FINAL	

Footnotes:

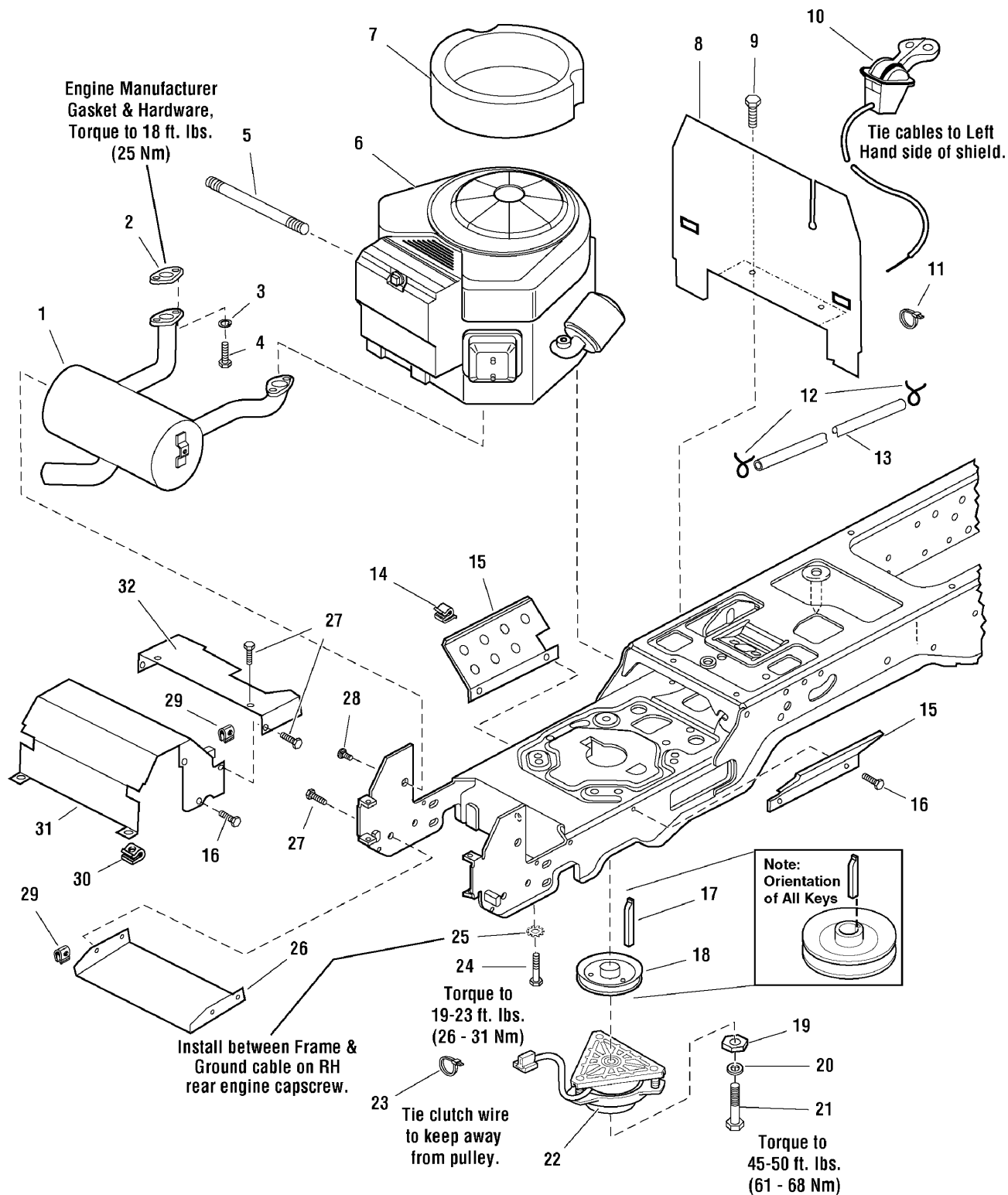


Engine Group - 20HP, 22HP & 23HP Briggs & Stratton, Vanguard Twin

Item	Part No	Qty	Description	Note
1	1726920	1	MUFFLER	
1	1722625	1	MUFFLER	(Only used on 20HP Models)
3	1917356	4	LOCKWASHER, 5/16	
4	2860660	4	CAPSCREW, Socket Head, 5/16-18 x 7/8, G8	
5	1723165	1	HOSE, Oil Drain	
6		1	* ENGINE, 22HP Briggs & Stratton VANGUARD Twin	(Mod. # 386777-0111-E1)
6		1	* ENGINE, 23HP Briggs & Stratton VANGUARD Twin	(Mod. # 386777-0111-E1)
6		1	* ENGINE, 21HP Briggs & Stratton VANGUARD Twin	(Mod. # 385777-0119-E1)
6		1	* ENGINE, 20HP Briggs & Stratton VANGUARD Twin	(Mod. # 358777-0110-E1)
7	1722949	1	SEAL, Circle	
8	1722388A	1	BULKHEAD	
9	1925003	2	CAPSCREW, Hex Head Taptite, 1/4-20 x 1/2	
10	1727223	1	CONTROL, Throttle Double 39" Long w/Knobs	(Only used on 20HP Models)
10	1734506	1	CONTROL, Throttle Double	
11	1701011	1	TIE	
12	2860112	2	CLAMP, Hose Type E	
13	1718678	1	HOSE, 59" Long	
14	2834683	2	CLIP, Wire	
15	1722392A	2	SHIELD	
16	1929000	8	SCREW, Hex Head Taptite, 1/4-20 x 3/8	
17	1720463	1	KEY	
18	1722288	1	PULLEY & HUB ASSEMBLY, 4-1/2 OD	
19	1708264	1	WASHER, Hex	
20	1918199	1	LOCKWASHER, 7/16	
21	1960648	1	CAPSCREW, Hex Head, 7/16-20 x 2-3/4	
22	1686883	1	CLUTCH, Electric, OGURA	
22	1720532	1	CLUTCH, Electric, Big Brake OGURA	
23	2832747	1	TIE	
24	2830598	4	CAPSCREW, Hex Head Taptite, 3/8-16 x 1-1/2	
25	2820427	1	LOCKWASHER, External Tooth, 3/8	
26	1722414A	1	SHIELD, Muffler Bottom	
27	1960295	8	CAPSCREW, Hex Head Flange Lock, 1/4-20 x 5/8	
28	1924856	2	CAPSCREW, Hex Head Taptite, 5/16-18 x 1/2	
29	1960368	8	NUT, Speed, 1/4-20	
30	1935255	2	NUT, Speed, 5/16-18	
31	1722389A	1	DUCT, Muffler Top	

Footnotes:

Note* See your local Briggs & Stratton distributor for parts and service.

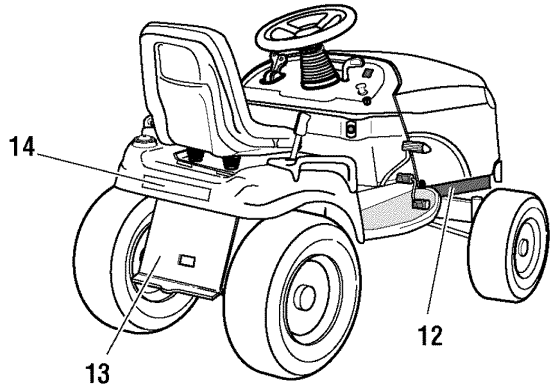
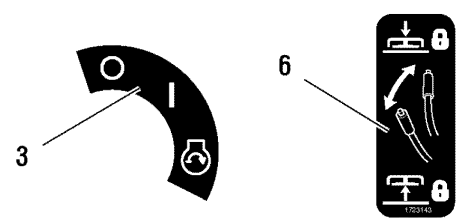
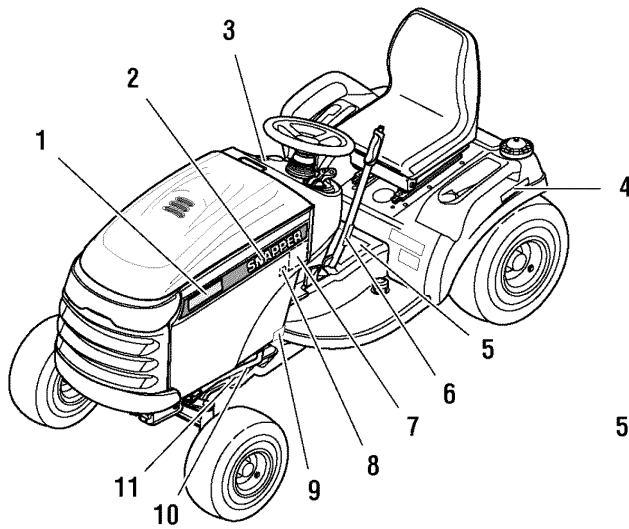


Engine Group - 20HP, 22HP & 23HP Briggs & Stratton, Vanguard Twin

Item	Part No	Qty	Description	Note
32	1722390A	1	DUCT, Muffler Extension	

Footnotes:

Note* See your local Briggs & Stratton distributor for parts and service.

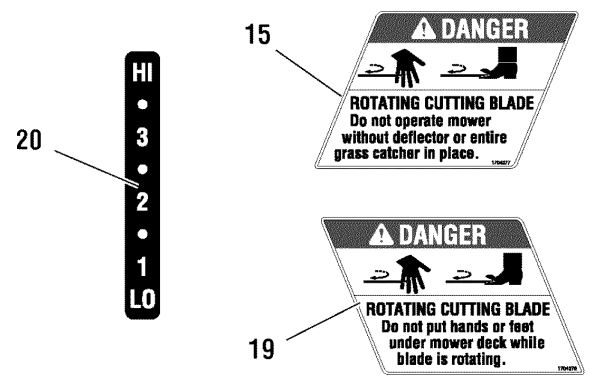
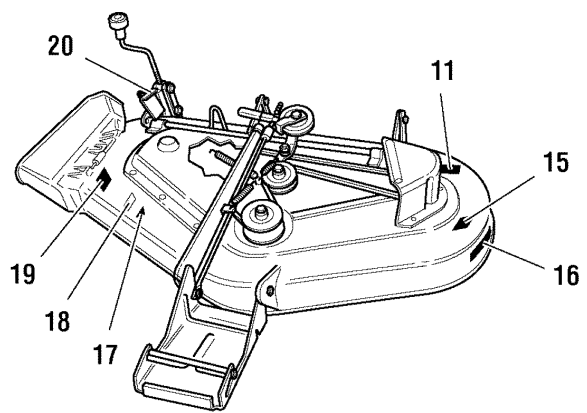
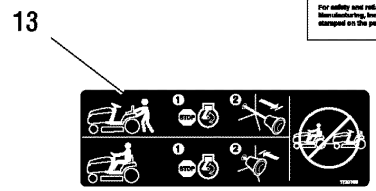


7

MOWER BELTS & BLADES	
38" Mower	
Drive Belt	1716854
Mower Blade - Left	1704895
Mower Blade - Right	1704911
40" Mower	
Drive Belt	1671873
Deck Drive Belt	1671871
Mower Blade - Left	1704895
Mower Blade - Right	1704911
44" Mower	
Drive Belt	1811873
Deck Drive Belt	1871871
Mower Blade	1704899
48" Mower	
Drive Belt	1716854
Mower Blade - Left	1704895
Mower Blade - Right	1704911
54" Mower	
Drive Belt	1801873
Deck Drive Belt	1871871
Mower Blade - Left	1704895
Mower Blade - Right	1704911

8

TOUCH-UP PAINT PART NUMBERS	
13 Oz. Spray Can Paint	
Deep Orange	188811
Water Based	188873

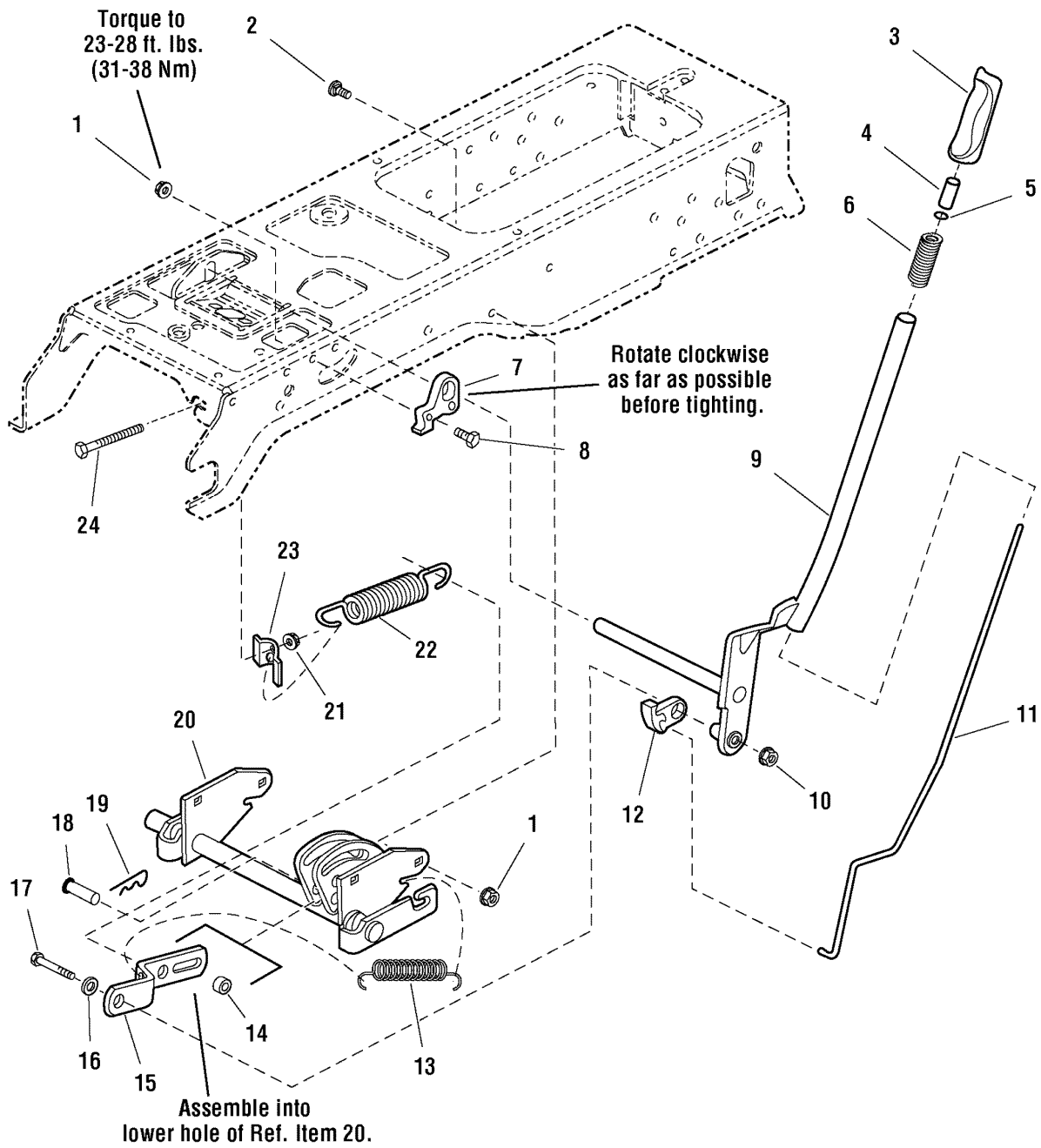


Decals Group

Item	Part No	Qty	Description	Note
1	1731949	2	DECAL, YT400 23HP	
1	1731930	2	DECAL, YT400 23HP	
1	1727030	2	DECAL, YT2250	
1	1727216	2	DECAL, YT2044	
2	1725065	1	DECAL, Hood Stripe, Snapper, LH	
2	1725066	1	DECAL, Hood Stripe, Snapper, RH	
3	1722806	1	DECAL, Ignition Switch Symbols, White/Black	
4	1718025	1	DECAL, Automatic Control Traction	
5	1726923	1	DECAL, Tunnel Cover	
5	1723175	1	DECAL, Tunnel Cover	(CE/Export)
5	1734027	1	DECAL, Tunnel Cover 4x4	(CE/Export)
6	1723143	1	DECAL, Lift Lever Symbols	
7	1727014	1	DECAL, Drive Belts, Mower Blades	
8	1720454	1	DECAL, Touch-Up Paint, Red	
9	1723296	2	DECAL, Protective Sticker	
10		1	LABEL, Decibel, Power Mass	(Not a service part)
11		2	DECAL, I.D. Plate	(Not a service part)
12		1	DECAL, Patent	(Not a service part)
13	1723160	1	DECAL, Transmission Release Valve	
14	1731955	1	DECAL, Snapper w/stripe	
14	1725061	1	DECAL, Snapper	
15	1704276	1	DECAL, Danger Do Not Put Hands/Feet in Mower	
16	1722771	1	DECAL, Free Floating Mower, Silver	
17		1	DECAL, OPEI Certified	(Not a service part)
18	1722789	1	DECAL, 44", Silver on Black with Stripe	
18	1706640	1	DECAL, 50"	
19	1704277	1	DECAL, Danger Do Not Operate Without Deflector	
20	1721197	1	DECAL, Height of Cut	

Footnotes:

Lift Group - Manual Lift

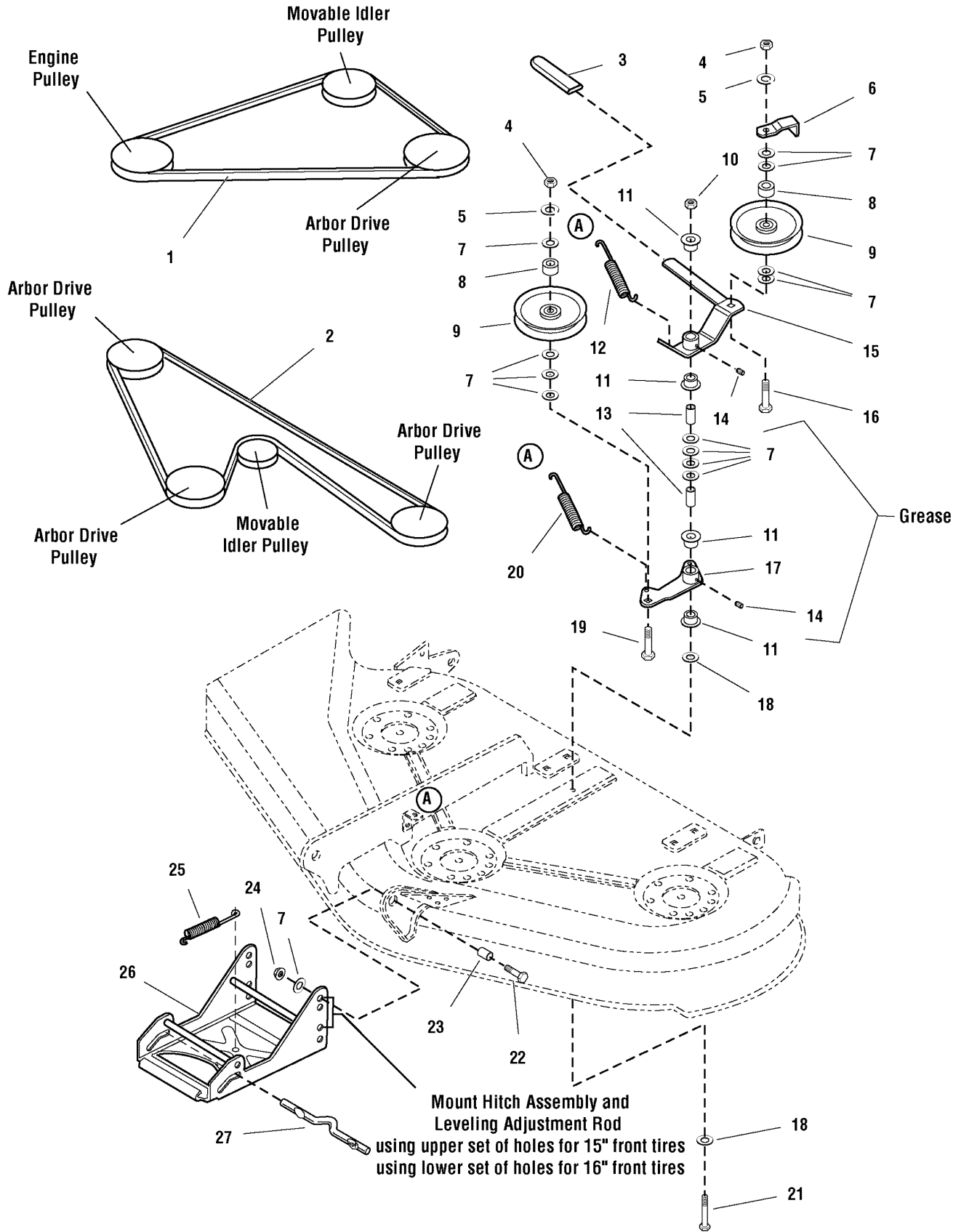


Lift Group - Manual Lift

Item	Part No	Qty	Description	Note
1	1927557	2	NUT, Hex Whiz Lock Flange, 5/16-18, Large, Black	
2	1931333	4	CARRIAGE BOLT, 5/16-18 x 3/4	
3	1722291	1	GRIP, Lift Lever	
4	1723124	1	BUTTON, Red Nylon, for 1/4 Rod	
5	1960674	1	NUT, Push	
6	1723321	1	SPRING, Compression, Lift Lever	
7	1721581	1	QUADRANT, Lift, Powdered Metal	
8	1926149	2	CAPSCREW, Hex Head, 5/16-18 x 1, G8, Black	
9	1721712A	1	LEVER ASSEMBLY, Lift	
10	1960636	5	NUT, Hex KEPS, 5/16-18	
11	1722482	1	ROD, Latch	
12	1722112	1	LOCK, Lift, Powdered Metal	
13	2156302	1	SPRING, Extension	
14	1723163	1	SPACER, 1/2 x 3/4 x 23/32	
15	1723795A	1	BAR, Lift, 9-7/8 Long	
16	1919381	1	WASHER, 5/16, Black	
17	1921160	1	CAPSCREW, Hex Head, 5/16-18 x 2-1/4	
18	1722819	1	PIN, Flat Head Drilled, 1/2 x 2-1/8 Long	
19	1960033	1	CLIP, Hair Pin, 2-9/16 Long	
20	1727778A	1	SHAFT ASSEMBLY, Lift	
21	1935255	1	NUT, Speed, 5/16-18, Lug	
22	1675232	1	SPRING, Compression	
23	1723499	1	RETAINER, Spring Flat	
24	1722357	1	CAPSCREW, Hex Washer Head, 5/16-18 x 4-1/2	

Footnotes:

44" Mower Deck - Belt, Idler Arm & Hitch

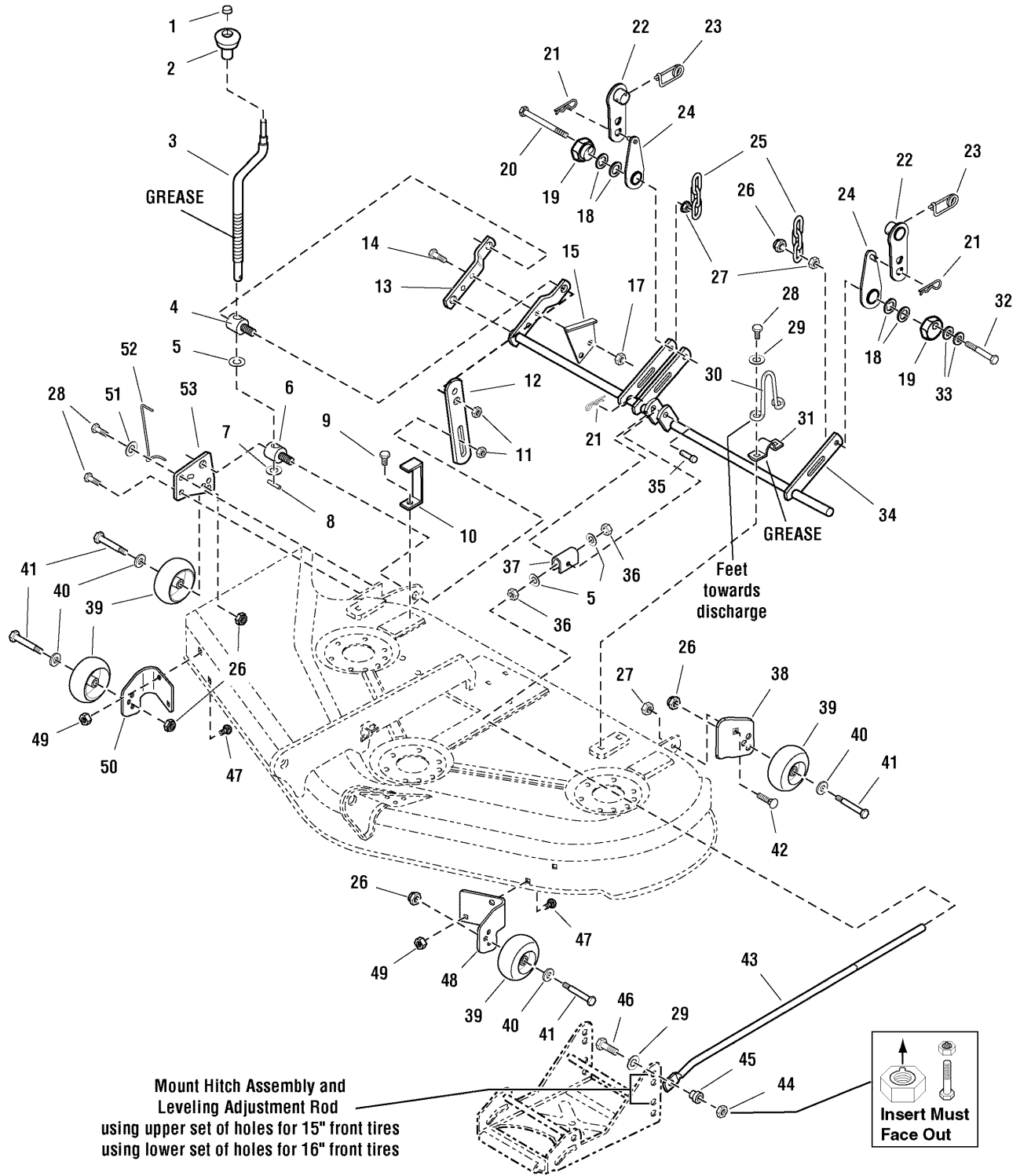


44" Mower Deck - Belt, Idler Arm & Hitch

Item	Part No	Qty	Description	Note
1	1601672	1	V-BELT, Mower Drive	
2	1721532	1	V-BELT, Arbor Drive	
3	1665835	1	GRIP, Lever	
4	1916950	2	NUT, Hex, 3/8-16	
5	1916965	2	WASHER, Lock, 3/8	
6	1677135A	1	BELT STOP, Idler	
7	1924940	14	WASHER, 3/8	
8	1666294	2	SPACER, 25/64 x 21/32 x 7/16, Powder Metal	
9	1685150	2	PULLEY, Idler	(Includes Ref. No. 8)
10	1960339	1	NUT, Hex Flange, 3/8-16, MAC Lock Large, Black	
11	1676148	4	BUSHING, 5/8 x 3/4 x 13/32, Powder Metal	
12	1715435	1	SPRING	
13	1674669A	2	SPACER, 25/64 x 5/8 x 1-1/8, Case Hardened	
14	2812808	2	GREASE FITTING	
15	1704658	1	LEVER ASSEMBLY, Idler	(Includes Ref. Nos. 3, 11 & 14)
16	1960315	1	CARRIAGE BOLT, 3/8-16 x 2	
17	1718561	1	LEVER ASSEMBLY, Idler Arm	(Includes Ref. Nos. 11 & 14)
18	1924356	2	WASHER, 3/8, Black	
19	1931352	1	CARRIAGE BOLT, 3/8-16 x 1-1/2	
20	1656936	1	SPRING	
21	1923938	1	CAPSCREW, Hex Head, 3/8-16 x 3-1/2	
22	1921968	2	CAPSCREW, Hex Head, 3/8-16 x 1-3/8	
23	2157081	2	SPACER, 3/8 x 3/4 x 1/2	
24	2860681	2	NUT, Hex Toplock Spirallock Flange, 3/8-16	
25	2156302	1	SPRING	
26	1707432A	1	HITCH ASSEMBLY	
27	1715759	1	ROD, Latch	

Footnotes:

44" Mower Deck - Height Adjustment

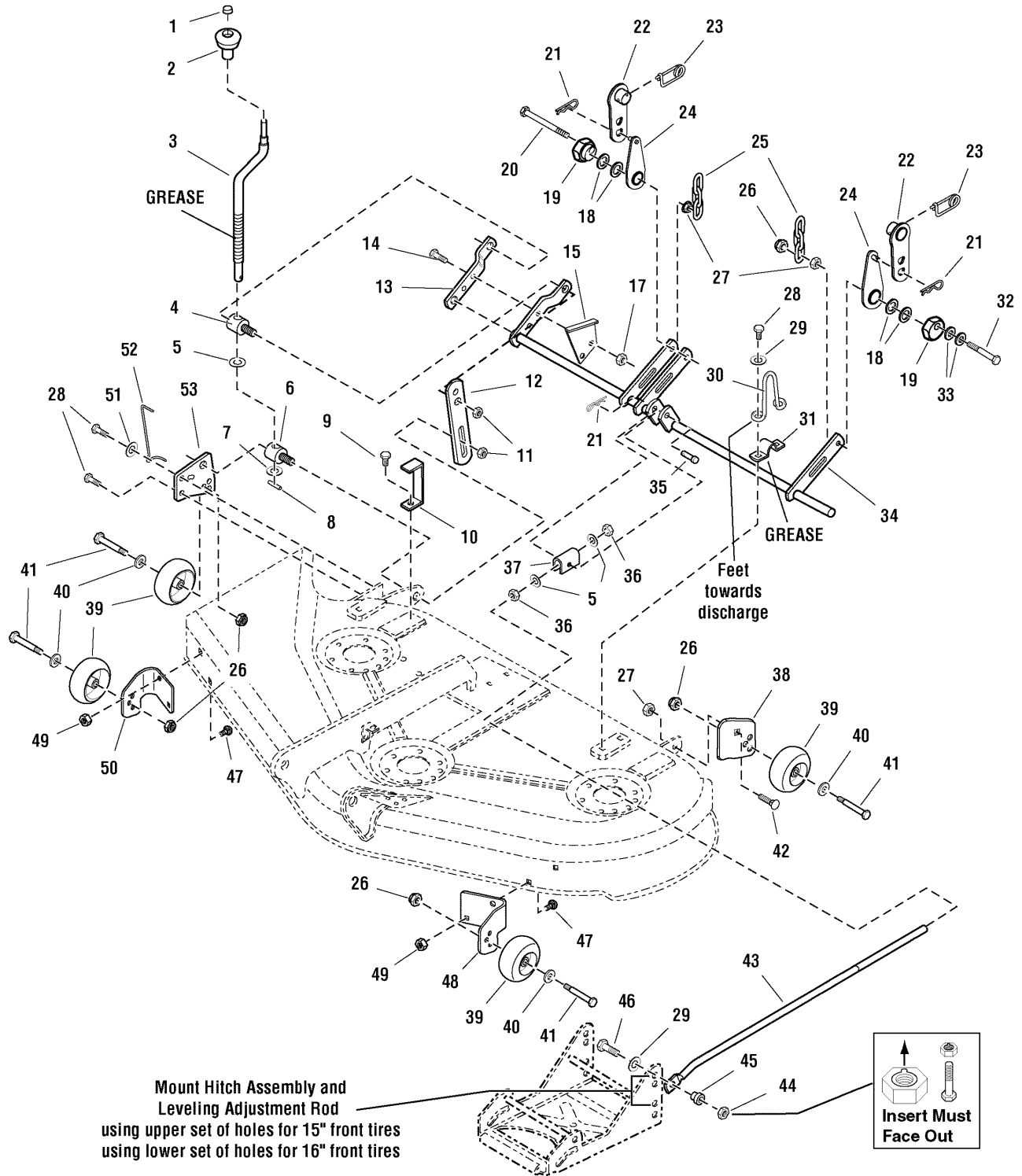


44" Mower Deck - Height Adjustment

Item	Part No	Qty	Description	Note
1	1960093	1	NUT, Push Pal Stud Capped	
2	1714084	1	KNOB, Spinner	
3	1719901	1	CRANK, Height Adjustment	
4	1704087	1	TRUNNION	
5	1960170	3	WASHER, 1/2	
6	1704086	1	TRUNNION	
7	1704097	1	WASHER, Detent	
8	2816001	1	PIN, Spring	
9	1664847	5	SCREW, Hex Washer Head Taptite, 5/16-18 x 3/4	
10	1722748A	1	BRACKET, Upstop	
11	1930644	2	NUT, Hex Flange Two-Way Lock, 1/2-13	
12	1727143A	1	STOP, Height Adjust	
13	1704083A	1	ARM, 1-1/4 Wide 6-41/64 Long	
14	1921977	2	CAPSCREW, Hex Head, 5/16-18 x 1-1/4 G5	
15	1704116A	1	BRACKET, Height of Cut	
17	1931277	2	NUT, Whiz Lock 5/16-18 NC-2B	
18	2860208	4	WASHER, 1	
19	1704082	2	NUT, Hex Adjust, Powdered Metal	
20	1913709	1	CAPSCREW, Hex Head, 3/8-16 x 3 G5	
21	1960074	3	CLIP, Hair Pin Spring Wire 1-5/8 Long	
22	1727361A	2	HANGER & SPACER ASSEMBLY	
23	2176012	2	RETAINER, Pin Spring	
24	1727356A	2	HANGER & PIN ASSEMBLY	
25	1707514A	2	CHAIN, Link 3 Links 4-1/2 Long	
26	1960687	5	NUT, Hex Flange ESNA, 3/8-16	
27	1931211	3	NUT, Hex Flange Whiz Lock Small, 3/8-16	
28	1931202	4	SCREW, Hex Washer Head Taptite, 5/16-18 x 1-1/4	
29	1924940	3	WASHER, 3/8	
30	1722747	1	STOP, Up	
31	1665374	3	STRAP	
32	1922130	1	CAPSCREW, Hex Head, 3/8-16 x 2-1/4 G5	
33	1922755	2	WASHER, 3/8	
34	1727138A	1	SHAFT ASSEMBLY, Rocker 44"	
35	2118053	1	PIN, Round Head Drilled, 3/8 x 2	
36	1913744	2	NUT, Hex Jam, 1/2-13 NC-2B	
37	1704081A	1	TRUNNION, 2 Wide for 9/16 Rod	
38	1727135A	1	SUPPORT, Roller LH	

Footnotes:

44" Mower Deck - Height Adjustment

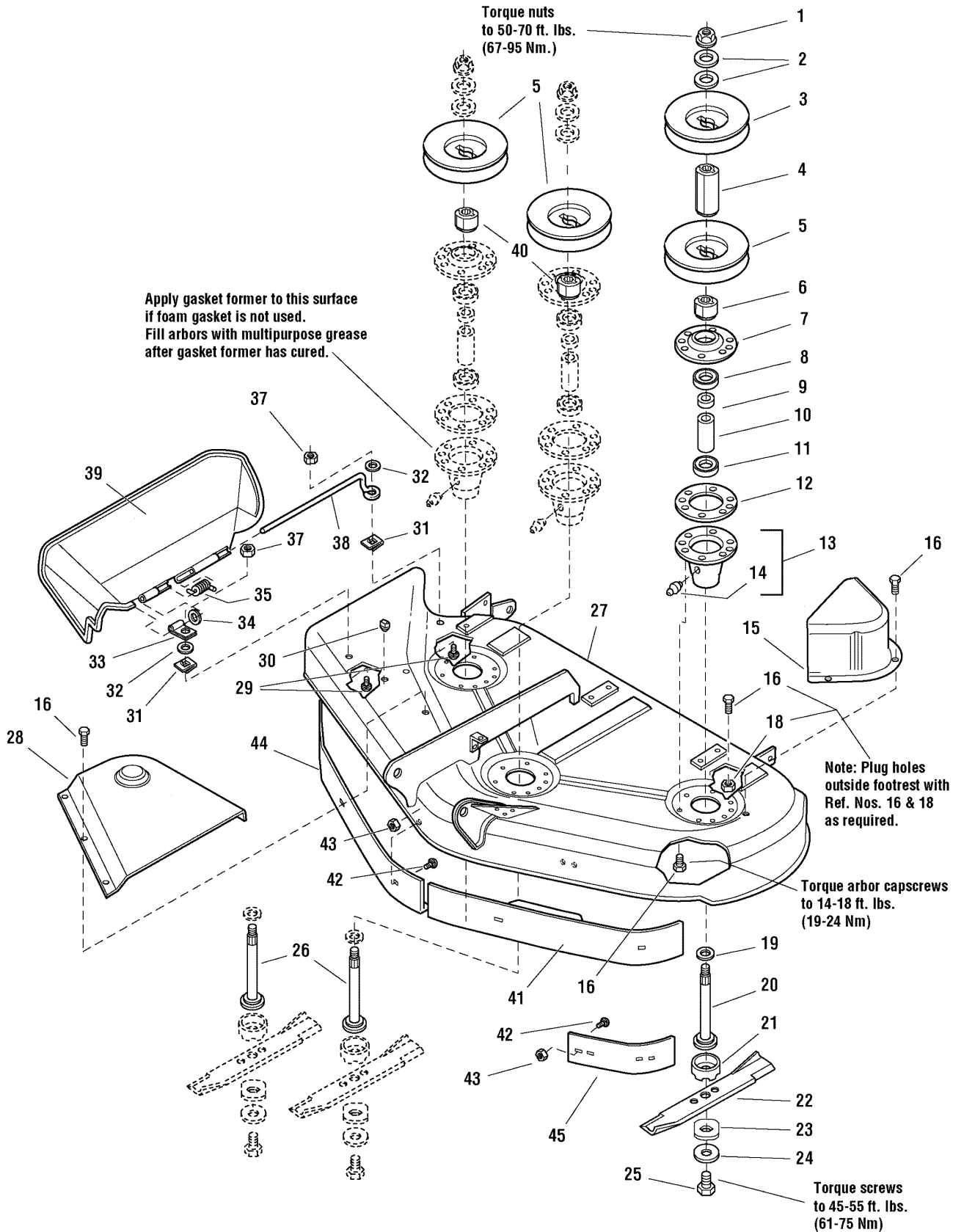


44" Mower Deck - Height Adjustment

Item	Part No	Qty	Description	Note
39	1714760	4	WHEEL, 2 Wide	
40	1960170	4	WASHER, 1/2	
41	2108765	4	BOLT, Wheel, 3/8-16 x 2-25/32	
42	1931350	1	CARRIAGE BOLT, 3/8-16 x 1 G5	
43	1704093	1	ROD, Adjustment, 28 Long	
44	2860681	1	NUT, Hex Toplock Spiral Flange 3/8-16	
45	1706644	1	SPACER	
46	1922606	1	CAPSCREW, Hex Head, 3/8-16 x 1-3/4 G8	
47	1931334	4	CARRIAGE BOLT, 5/16-18 x 7/8 G5	
48	1719852A	1	BRACKET, Wheel Guage LH	
49	1927557	4	NUT, Hex Flange Whiz Liock Large, 5/16-18	
50	1719853A	1	BRACKET, Wheel Guage RH	
51	1919381	1	WASHER, 5/16	
52	1704114	1	ROD, Indicator, 6-5/16 Long	
53	1727134A	1	SUPPORT, Plate	

Footnotes:

44" Mower Deck - Housing, Arbors & Blades

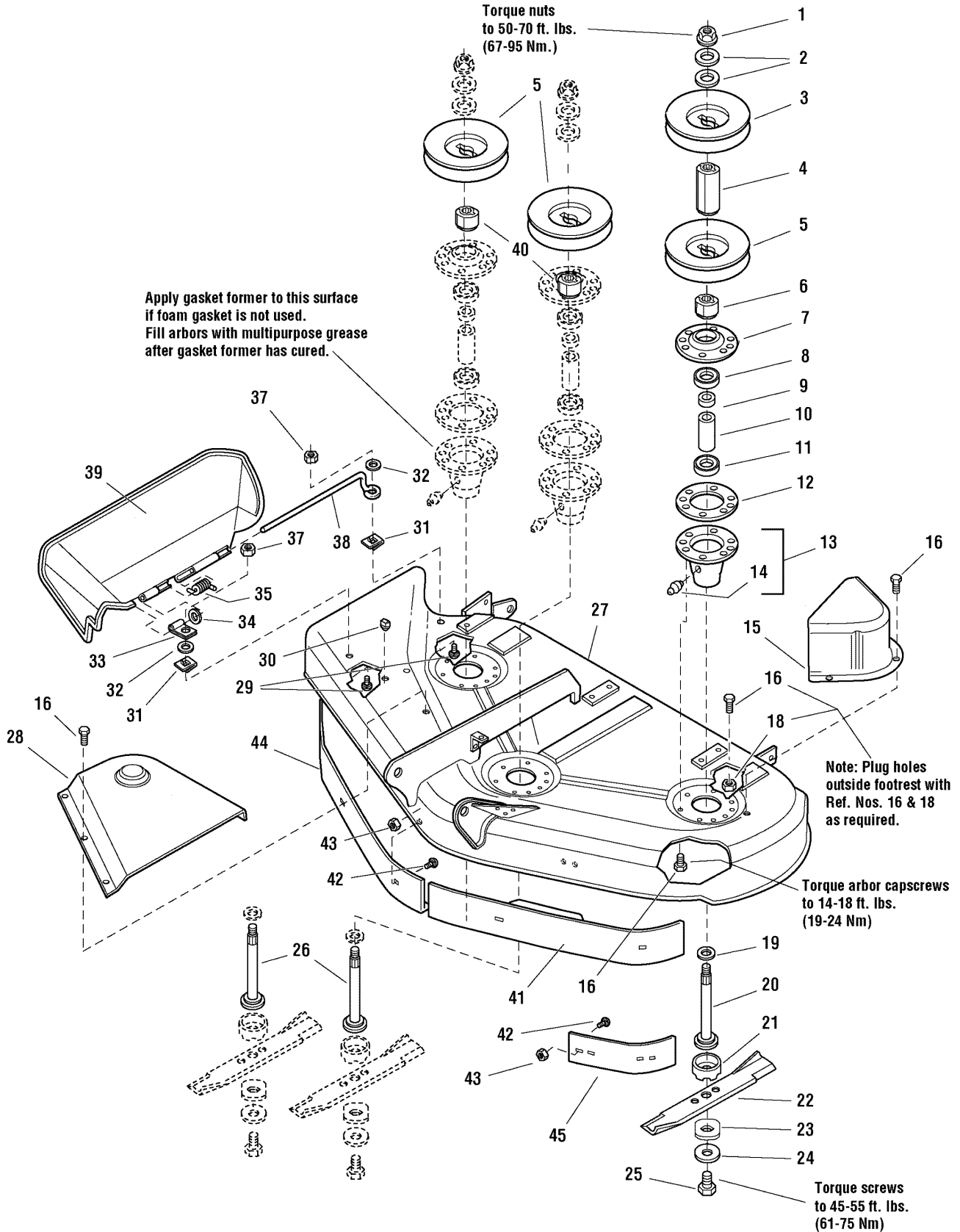


44" Mower Deck - Housing, Arbors & Blades

Item	Part No	Qty	Description	Note
1	1714419	3	NUT, Hex Flange, 9/16-18	
2	1713675	6	WASHER, Bellevilled, 9/16	
3	1713161	1	PULLEY, 4-1/2 O.D.	
3	1713091	1	PULLEY, 5 O.D.	
4	1713158	1	HUB, Double Pulley	
5	1713098	3	PULLEY	
6	1713533	1	HUB, Double Pulley	
7	1655729A	3	COVER, Arbor Housing	
8	2108202	3	BEARING, Ball, 3/4 x 1-3/4 x 5/8	
9	1715724	3	SPACER, 21/32 x 3/4 x 5/8	
10	1732544	3	SPACER, 11/16 x 5/32 x 2-11/16	
11	1705897	3	BEARING, Ball, 11/16 x 1-9/16 x 15/32	
12	1707335	3	GASKET, Foam	
13	1713338A	3	HOUSING ASSEMBLY, Arbor Bottom, w/Lube Fitting	(Includes Ref. No. 14)
14	1704314	3	FITTING, Grease	
15	1720560A	1	COVER, Arbor	
15	1732200A	1	COVER, Arbor without Ribs	
16	1664847	29	CAPSCREW, Hex Head Taptite, 5/16-18 x 3/4	
18	1931277	1	NUT, Hex Flange, 5/16,	
19	1713619	3	WASHER, Bellevilled, 9/16, Black	
20	1713612	1	SHAFT, Arbor (LH)	
21	1713196	3	SHIELD, Grass, Lower	
22	1704100A	3	BLADE, Mower, 16-1/8	
23	1713089	3	WASHER, Hex, 11/16 x 2	
24	1656916	3	WASHER, Spring 15/32, Black	
25	2823471	3	CAPSCREW, Hex Head, 7/16-14 x 1	
26	1713195	2	SHAFT, Arbor (Center & RH)	
27	1687154	1	MOWER HOUSING ASSEMBLY, 44" Mower (Red)	
28	1715673	1	COVER, Arbor	
29	1931318	2	CARRIAGE BOLT, 1/4-20 x 7/8	
30	1705115	1	PLUG, Hole	
31	1960518	2	NUT, Push	
32	1960353	2	WASHER, 1/4, Black	
33	1704873	1	CLAMP	
34	1919326	1	WASHER, 5/16, Black	
35	7101082	1	SPRING	

Footnotes:

44" Mower Deck - Housing, Arbors & Blades

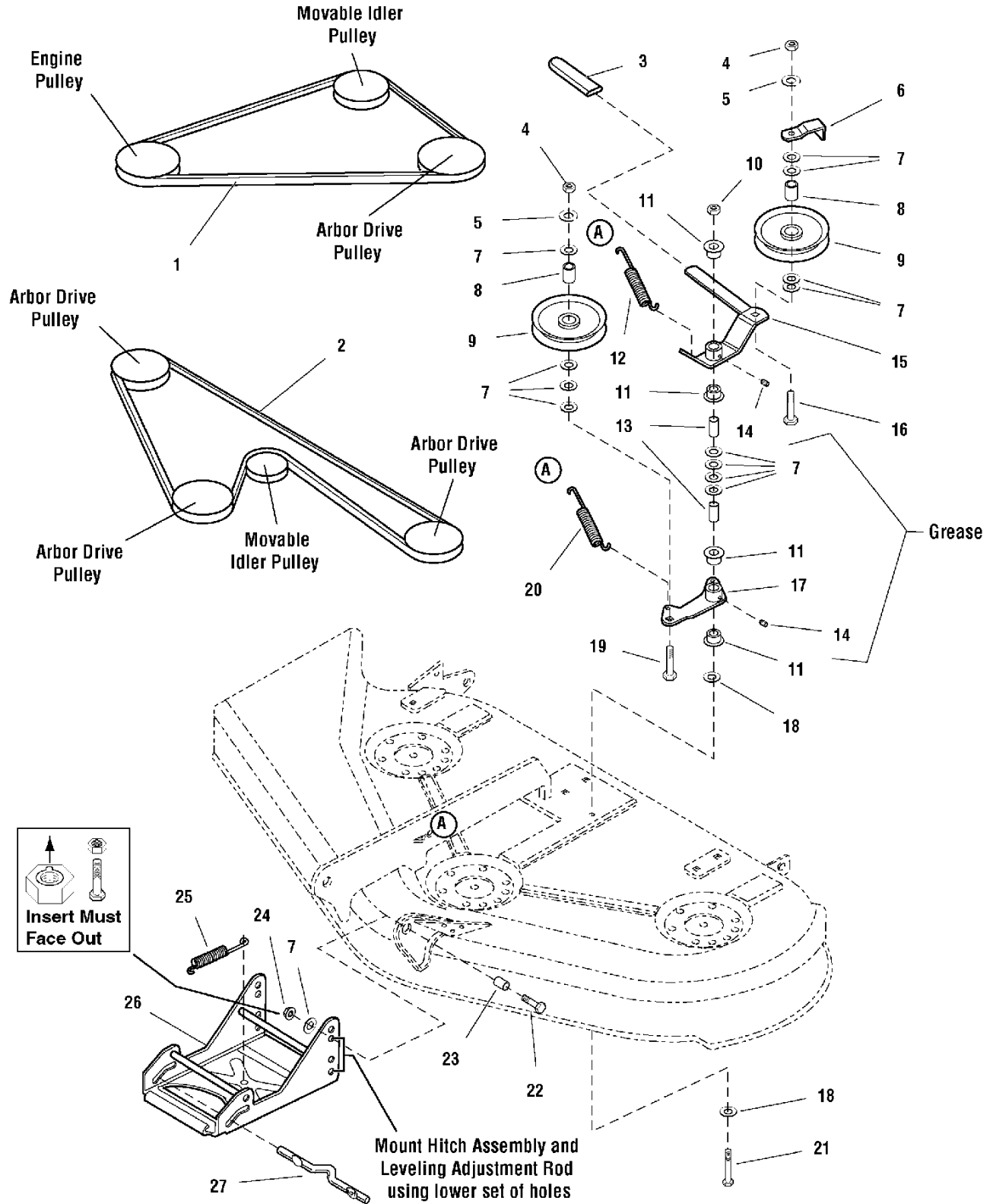


44" Mower Deck - Housing, Arbors & Blades

Item	Part No	Qty	Description	Note
37	1920397	2	NUT, ESNA 1/4-20	
38	1706709	1	ROD, Deflector, Front	
39	1705449	1	DEFLECTOR, Plastic	
40	1713197	2	HUB, Pulley, Center & RH	
41	1716879A	1	BAFFLE, Anti-Blowout, LH	(CE/Export)
42	1931333	2/8/11	CARRIAGE BOLT, 5/16-18 x 3/4, Black	(CE/Export)
43	1927557	2/8/11	NUT, Hex Flange Whiz Lock, 5/16-18, Black	(CE/Export)
44	1716878A	1	BAFFLE, Anti-Blowout, RH	(CE/Export)
45	1724538A	1	BAFFLE, Blowout, 44" & 50"	

Footnotes:

50" Mower Deck - Clutch & Support Group

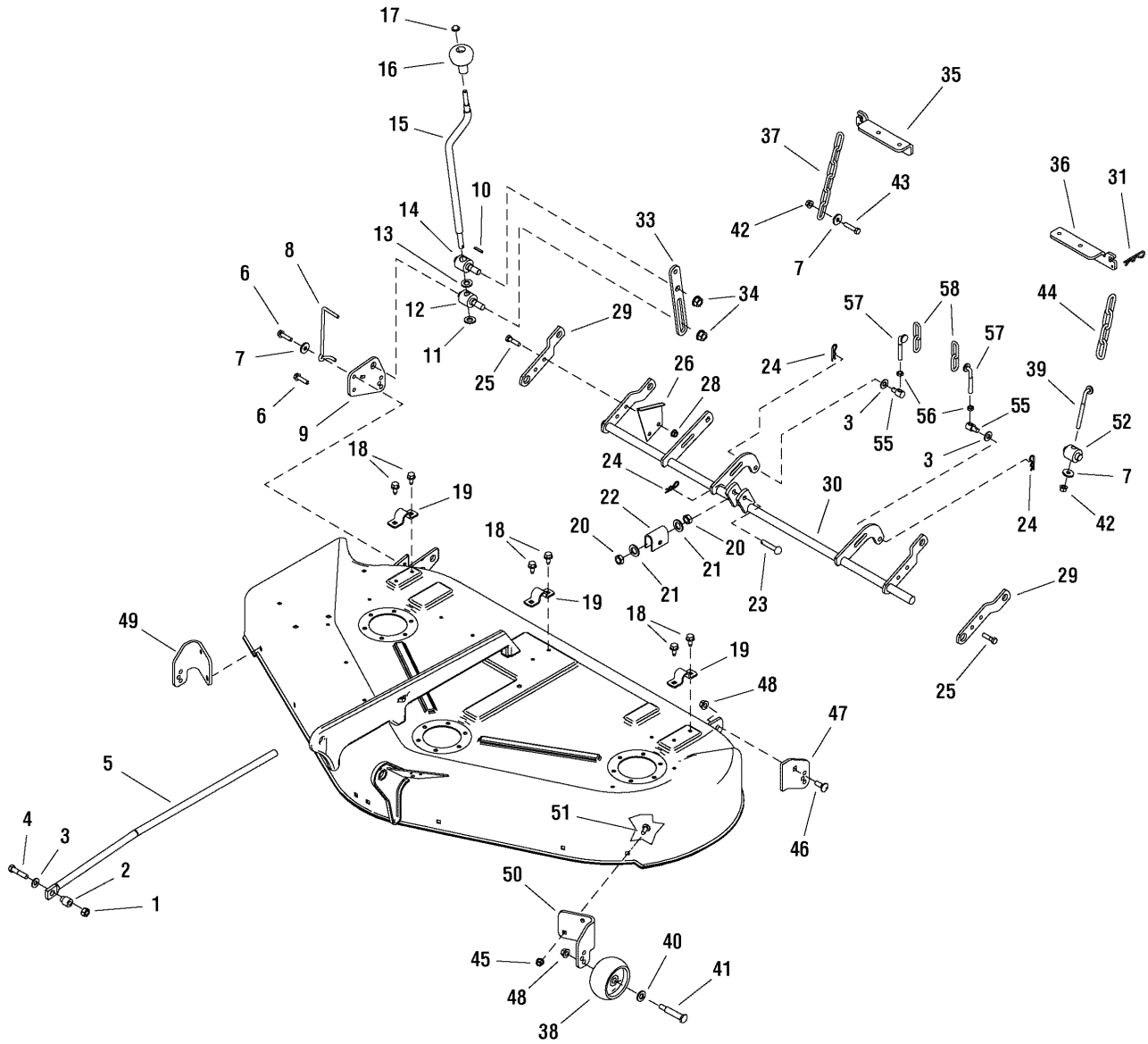


50" Mower Deck - Clutch & Support Group

Item	Part No	Qty	Description	Note
1	1707740	1	V-BELT, Mower Drive	
2	1703836	1	V-BELT, Arbor Drive	
3	1665835	1	GRIP, Lever	
4	3031009	2	NUT, Hex, 3/8-16	Was 1916950
5	3031008	2	WASHER, Lock, 3/8	Was 1916965
6	1677135A	1	BELT STOP, Idler	
7	7090122	14	WASHER, 3/8	Was 1924940
8	1716553	1	HUB, 25/64 x 3/4 x 63/64, Powder Metal	
9	1685150	2	PULLEY, Idler	(Includes Ref. No. 8)
10	3031355	1	NUT, Hex Flange, 3/8-16, MAC Lock Large, Black	Was 1960339
11	1676148	4	BUSHING, 5/8 x 3/4 x 13/32, Powder Metal	
12	1715435	1	SPRING	
13	1674669	2	SPACER, 25/64 x 5/8 x 1-1/8, Case Hardened	
14	2912808	2	GREASE FITTING	
15	1704658	1	LEVER ASSEMBLY, Idler	(Includes Ref. Nos. 11 & 14)
16	1960315	1	CARRIAGE BOLT, 3/8-16 x 2	
17	1718561	1	LEVER ASSEMBLY, Idler Arm	(Includes Ref. Nos. 11 & 14)
18	1924356	2	WASHER, 3/8, Black	
19	1931352	1	CARRIAGE BOLT, 3/8-16 x 1-1/2	
20	1656936	1	SPRING	
21	1923938	1	CAPSCREW, Hex Head, 3/8-16 x 3-1/2	
22	1921968	2	CAPSCREW, Hex Head, 3/8-16 x 1-3/8	
23	2157081	2	SPACER, 3/8 x 3/4 x 1/2	
24	7960641	2	NUT, Hex Aluminum Insert Lock, 3/8-16	
25	2156302	1	SPRING	
26	1707432A	1	HITCH ASSEMBLY	
27	1715759	1	ROD, Latch	

Footnotes:

50" Mower Deck - Height Adjust Group

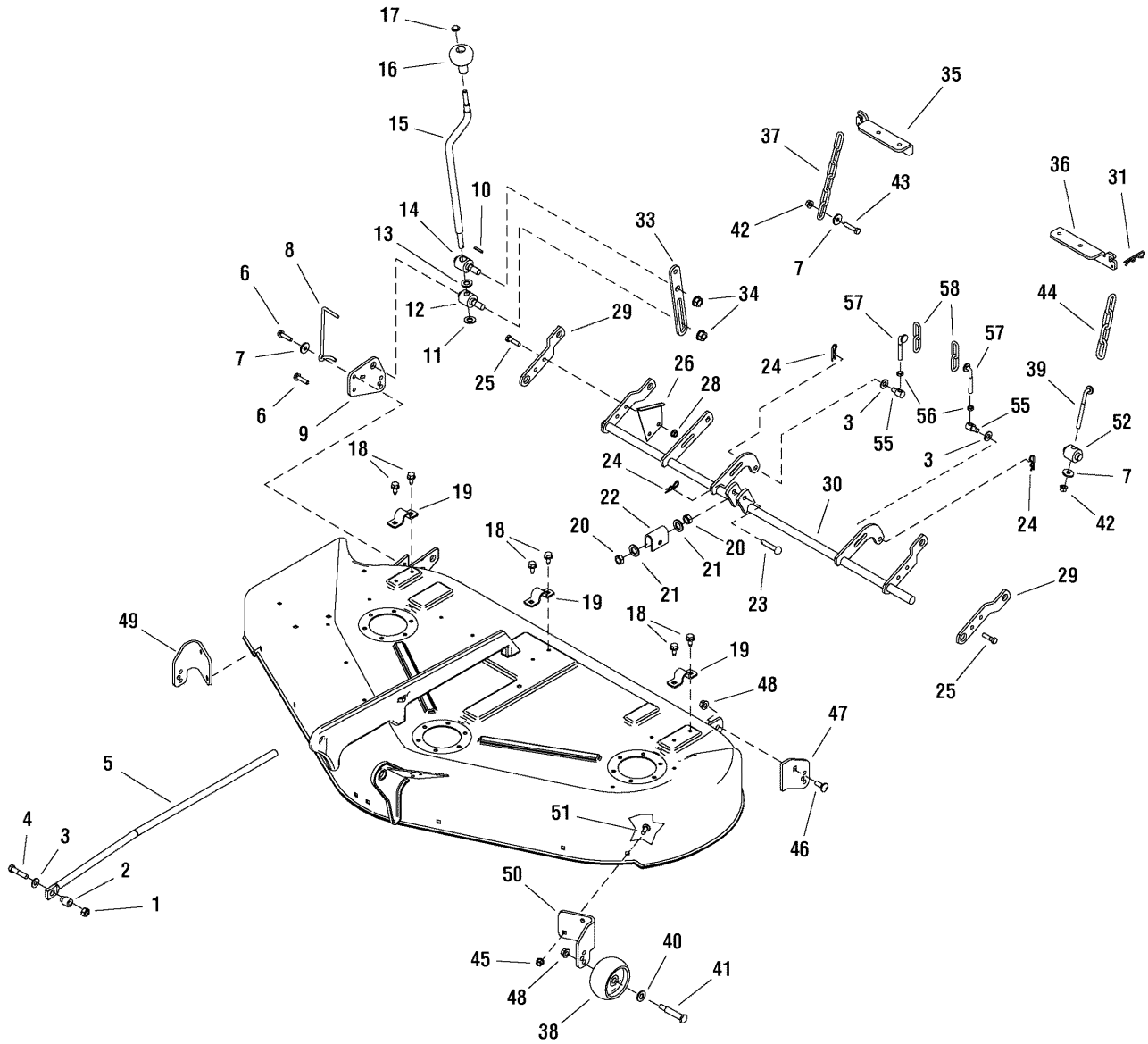


50" Mower Deck - Height Adjust Group

Item	Part No	Qty	Description	Note
1	2860681	1	NUT, Hex Toplock Spirallock Flange 3/8-16	
2	1706644	1	SPACER, 3/8 x 3/4 x 15/16	
3	1924940	3	WASHER, 3/4	
4	1922606	1	CAPSCREW, Hex Head 3/8-16 x 1-3/4 G8	
5	1722995	1	ROD, Adjusting	
6	1931202	2	SCREW, Hex Washer Head Taptite 5/16-18 x 1-1/4	
7	1919381	3	WASHER, 5/16	
8	1704114	1	INDICATOR, Cutting Height	
9	1727134A	1	SUPPORT, Plate	
10	2816001	1	PIN, Spring	
11	1704097	1	WASHER, Detent	
12	1704086	1	TRUNNION, 1-1/4	
13	1960170	1	WASHER, 1/2	
14	1704087	1	TRUNNION, 1-1/4	
15	1719901	1	CRANK, Height Adjustment	
16	1714084	1	KNOB, Spinner	
17	1960093	1	NUT, Push Pal 3/8 Stud Capped	
18	1664847	6	SCREW, Hex Washer Head Taptite 5/16-18 x 3/4	
19	1665374	3	STRAP	
20	1915726	2	NUT, Hex 5/8-11	
21	1924366	2	WASHER, 5/8	
22	1706645A	1	TRUNNION	
23	2118053	1	PIN, Round Head Drilled 3/8 x 2	
24	1960074	3	CLIP, Hair Pin	
25	1921977	4	CAPSCREW, Hex Head 5/16-18 x 1-1/4 G5	
26	1704116A	1	BRACKET, Height Of Cut 16GA	
28	1931277	4	NUT, Hex Flange 5/16-18 Whiz Lock Small	
29	1704083A	2	ARM, Rear R.H.	
30	1727139A	1	SHAFT ASSEMBLY, Rocker	
31	1960033	2	CLIP, Hair Pin	
33	1727143A	1	STOP, Height Adjusting	
34	1930644	2	NUT, Hex Flange 1/2-13 Two-Way Lock	
35	1727102A	1	HANGER, RH	
36	1727103A	1	HANGER, LH	
37	1708266A	1	CHAIN, Link	
38	1714760	4	WHEEL,	
39	1724959	1	ROD, Height Adjusting	

Footnotes:

50" Mower Deck - Height Adjust Group

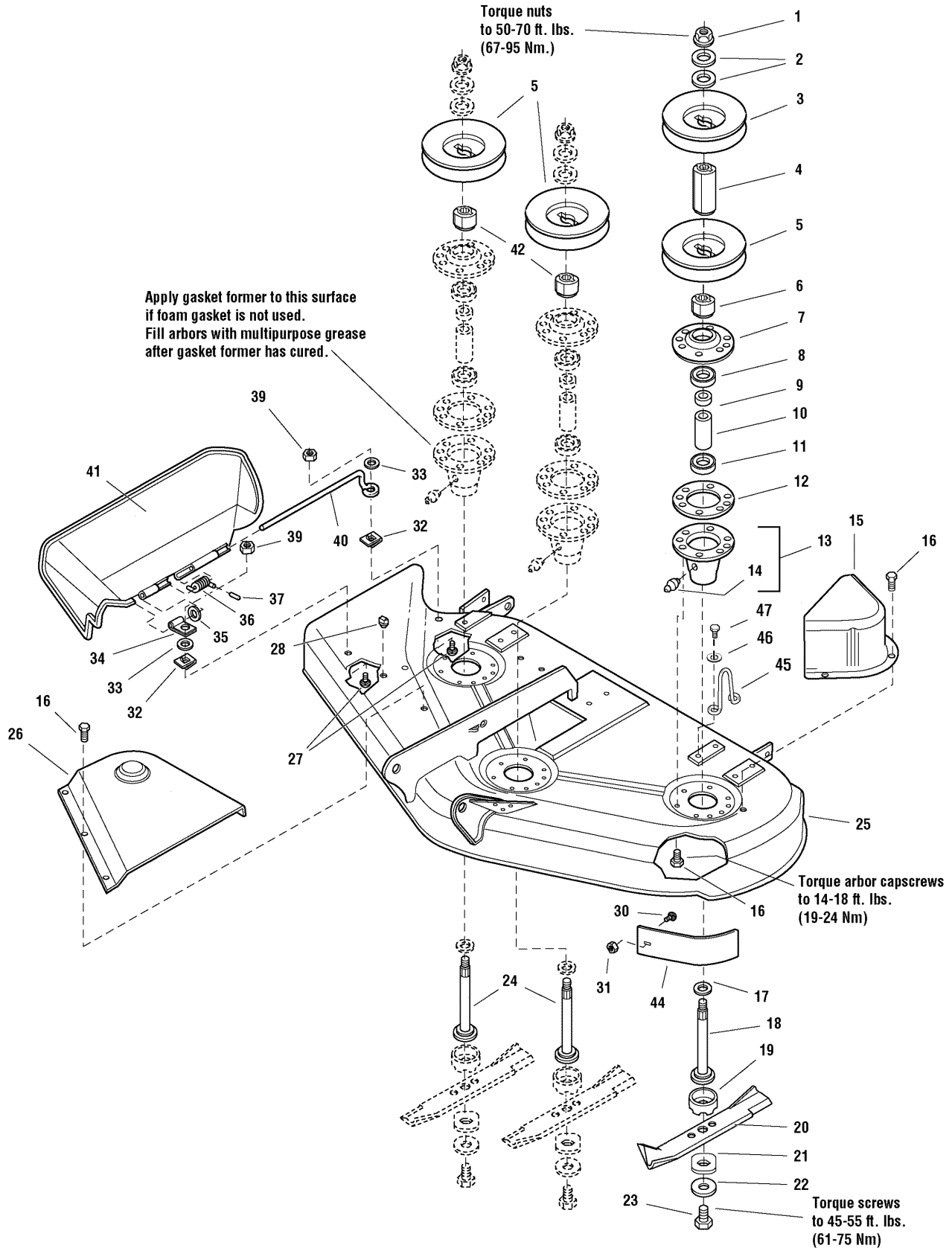


50" Mower Deck - Height Adjust Group

Item	Part No	Qty	Description	Note
40	1960170	4	WASHER, 1/2	
41	2108765	4	BOLT, Wheel 3/8-16	
42	1960686	2	NUT, Hex Flange 5/16-18	
43	1930570	1	CAPSCREW, Hex Head 5/16-18 x 1-1/2 G8	
44	1708088A	1	CHAIN, Link	
45	1927557	4	NUT, Hex Flange 5/16-18 Whiz Lock Large	
46	1931350	1	CARRIAGE BOLT, 3/8-16 x 1 G5	
47	1727135A	1	SUPPORT, Roller L.H.	
48	1960687	5	NUT, Hex Flange 3/8-16 ESNA	
49	1719853A	1	BRACKET, Wheel Gauge R.H.	
50	1719852A	1	BRACKET, Wheel Gauge L.H.	
51	1931334	4	CARRIAGE BOLT, 5/16-18 x 7/8 G5	
52	1724009	1	TRUNNION	
55	1731382	2	TRUNNION	
56	1920161	2	NUT, Hex Jam 5/16-18	
57	1731384	2	ROD, Height Adjusting 5/16-18	
58	1731383A	2	CHAIN, Link	

Footnotes:

50" Mower Deck - Housing, Arbors & Blades

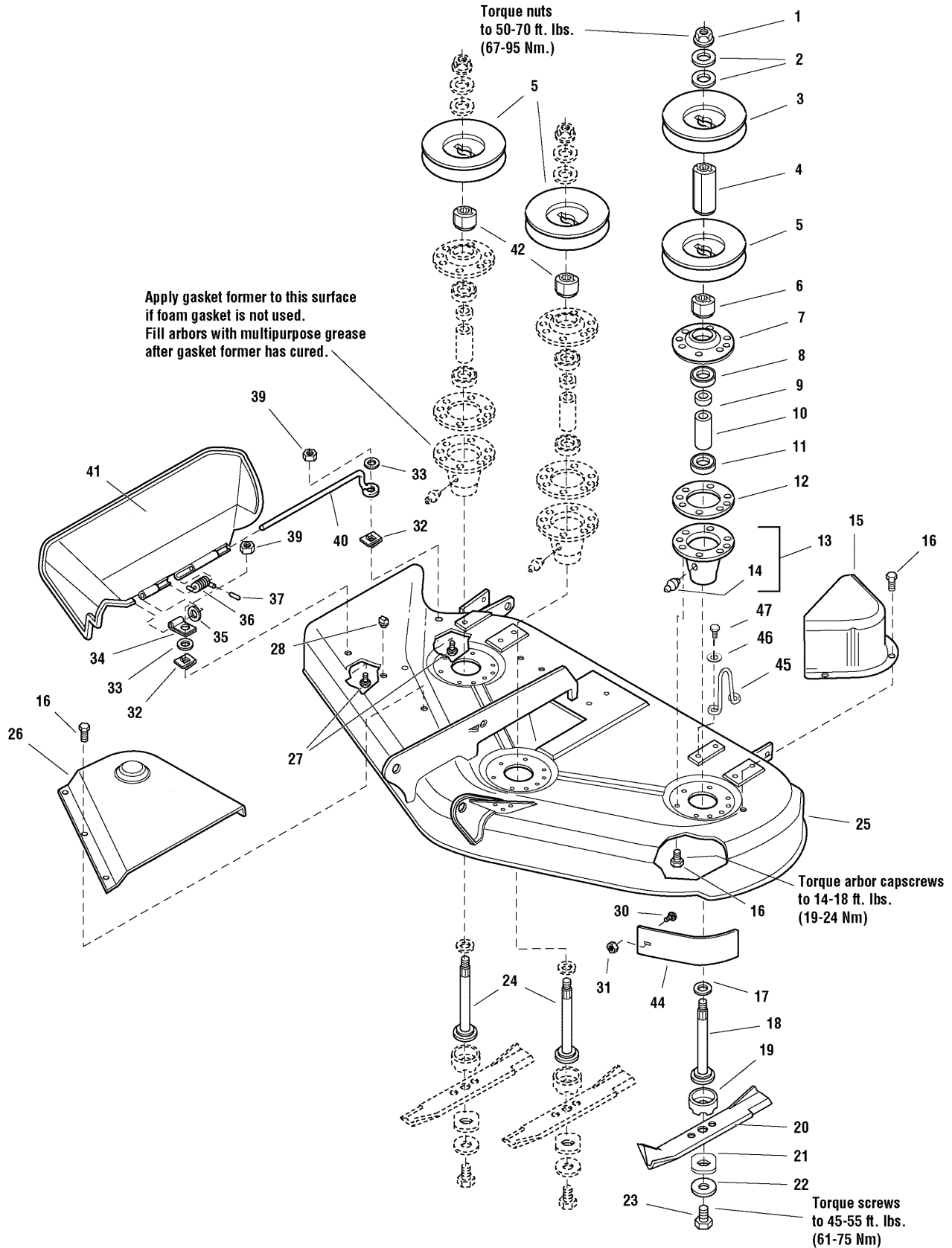


50" Mower Deck - Housing, Arbors & Blades

Item	Part No	Qty	Description	Note
1	1714419	3	NUT, Hex Flange, 9/16-18	
2	1713675	6	WASHER, Bellevilled, 9/16	
3	1713161	1	PULLEY	
4	1713158	1	HUB, Double Pulley	
5	1713098	3	PULLEY	
6	1713533	1	HUB, Double Pulley	
7	1655729A	3	COVER, Arbor Housing	
8	2108202	3	BEARING, Ball, 3/4 x 1-3/4 x 5/8	
9	1715724	3	SPACER, 21/32 x 3/4 x 5/8	
10	1732544	3	SPACER, 11/16 x 5/32 x 2-11/16	
11	1705897	3	BEARING, Ball, 11/16 x 1-9/16 x 15/32	
12	1707335	3	GASKET, Foam	
13	1713338A	3	HOUSING ASSEMBLY, Arbor Bottom, w/Lube Fitting	(Includes Ref. No. 14)
14	1704314	3	FITTING, Grease	
15	1720560A	1	COVER, Arbor	
16	1664847	27	CAPSCREW, Hex Head Taptite, 5/16-18 x 3/4	
17	1713619	3	WASHER, Bellevilled, 9/16, Black	
18	1713612	1	SHAFT, Arbor (LH)	
19	1713196	3	SHIELD, Grass, Lower	
20	1708229A	3	BLADE, Mower, 18-1/8	
21	1713089	3	WASHER, Hex, 11/16 x 2	
22	1656916	3	WASHER, Spring 15/32, Black	
23	2823471	3	CAPSCREW, Hex Head, 7/16-14 x 1	
24	1713195	2	SHAFT, Arbor (Center & RH)	
25	1722746D	1	MOWER HOUSING ASSEMBLY, 50" Mower	
26	1715673	1	COVER, Arbor	
27	1931318	2	CARRIAGE BOLT, 1/4-20 x 7/8	
28	1705115	1	PLUG, Hole	
30	1931333	2	CARRIAGE BOLT, 5/16-18 x 3/4	
31	1927557	2	NUT, Hex, Whizlock, 5/16-18	
32	1960518	2	NUT, Push	
33	1960353	2	WASHER, 1/4, Black	
34	1704873	1	CLAMP	
35	1919326	1	WASHER, 5/16, Black	
36	7101082	1	SPRING	
37	1723323	1	CAP, Spring End	

Footnotes:

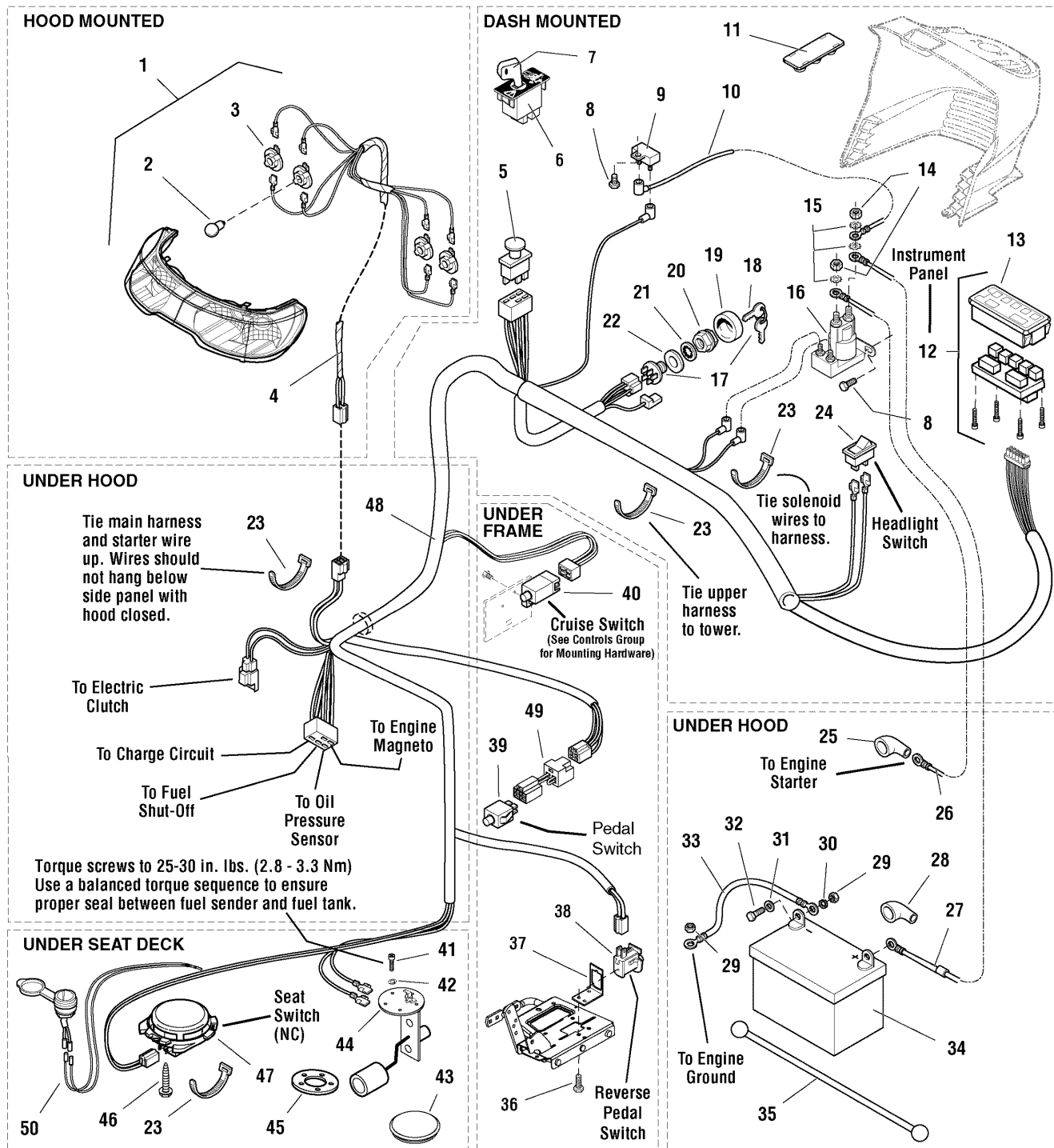
50" Mower Deck - Housing, Arbors & Blades



50" Mower Deck - Housing, Arbors & Blades

Item	Part No	Qty	Description	Note
39	1920397	2	NUT, Hex, 1/4-20 ESNA	
40	1706709	1	ROD, Deflector, Front	
41	1705449	1	DEFLECTOR, Plastic	
42	1713197	2	HUB, Pulley, Center & RH	
44	1724538A	1	BAFFLE, Anit-Blowout	
45	1719929	1	UPSTOP	
46	1924940	2	WASHER	
47	1960541	1	CAPSCREW, Taptite 5/16-18 x 3/4	

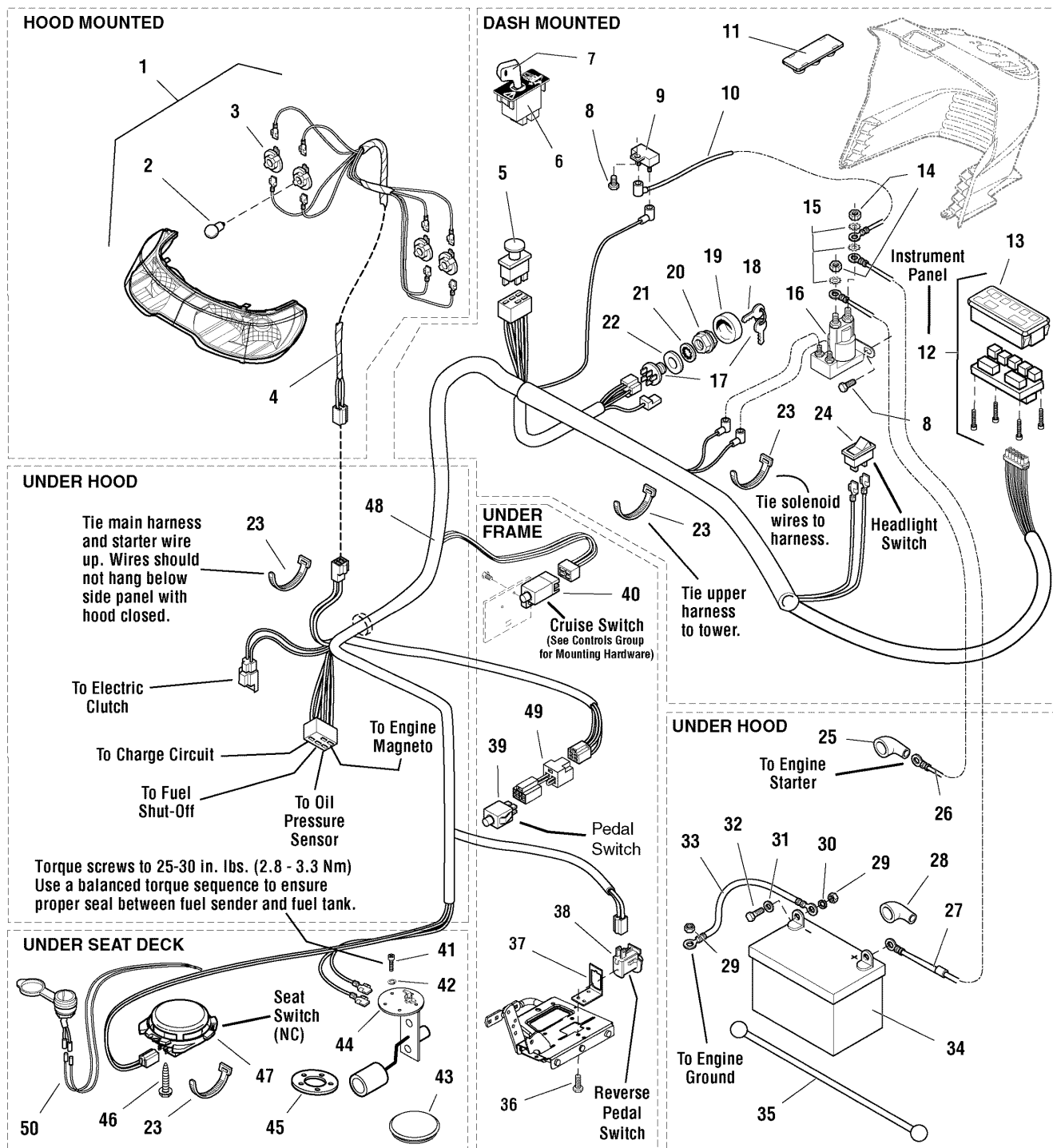
Footnotes:



Electrical Group

Item	Part No	Qty	Description	Note
1	1721810	1	HEADLIGHT ASSEMBLY, 4 Bulb	(Includes Ref. Nos. 2 & 3)
2	1677371	4	BULB, Headlight, 12.8V	
3	1723451	4	SOCKET ASSEMBLY, Headlight, Sealed	
4	1722669	1	HARNESS, Headlight	
5	1722887	1	SWITCH, PTO Push/Pull Symbols	
6	1726556	1	MODULE, RMO	(Includes Ref. No. 7)
7	1726557	1	KEY, RMO Module Plastic	
8	1925003	2	CAPSCREW, Hex Washer Head Taptite, 1/4-20 x 1/2, Black	
9	1665238	1	BREAKER, Circuit, 12 Volt 20 Amps	
10	1665237	1	WIRE, 12GA 5-15/16 Long, Red	
11	1722611	1	PLUG, Hole, Square	
12	1725074	1	PANEL, Instrument w/ Fuel Gage & Hour Meter	(Includes Ref. No. 13)
13	1724865	1	COVER, Instrument Panel	
14	2820263	2	NUT, Hex, 5/16-24	
14	2860750	2	NUT, KEPS Lock 5/16-24	(CE/Export) (Used only on RMO/ACS Models)
15	2820426	3	LOCKWASHER, External Tooth, 5/16	
16	1722739	1	SOLENOID	
16	1728963	1	SOLENOID	(CE/Export) (Used only on RMO/ACS Models)
17	1686734	1	SWITCH ASSEMBLY, Ignition, 6 Pin INDAK	(Includes Ref. Nos. 18, 19, 20, 21 & 22)
18	1717163	1	KEYS, Set of 2	
19	1717550	1	COVER, For Ignition Switch, Plastic	
20	1717549	1	NUT, Hex Flange, 5/8-32, Ignition Switch	
21	1960547	1	LOCKWASHER, Internal Tooth, 5/8, Thin	
22	2101025	1	WASHER, Shim	
23	1701011	3	TIE, Strap, 7-5/16 Long	
23	2825094	4	TIE, Strap, 7-5/16 Long	(CE/Export) (Used only on RMO/ACS Models)
24	1716951	1	SWITCH, Headlights , 2 Terminal	
25	1713535	1	BOOT, Insulator Cable Terminal, 1-15/16 Long, Red	
26	1721830	1	CABLE, #6 x 25" Long, Ring Terminals	
27	1603618	1	CABLE, #6 x 8" Long, Ring Terminals	
28	1677296	1	BOOT, Insulator Battery Terminal	
29	2816622	3	NUT, Hex, 1/4-20	
30	2816964	2	LOCKWASHER, 1/4	
31	2821319	2	WASHER, 1/4	
32	2823341	2	CAPSCREW, Hex Head, 1/4-20 x 3/4	
33	1713163	1	CABLE, #6 x 26 Long, Ring Terminal	
34	1685215	1	BATTERY, 12 Volt	

Footnotes:



Electrical Group

Item	Part No	Qty	Description	Note
35	1722009	1	STRAP, Battery, 14 Long, Rubber	
36	1929000	2	CAPSCREW, Hex Head Taptite, 1/4-20 x 3/8	
37	1726810A	1	BRACKET, Switch Mount	
38	1732004	1	SWITCH, Reverse Pedal	
38	1704379	1	SWITCH, Reverse Pedal	<i>(CE/Export) (Used only on RMO/ACS Models)</i>
39	1732006	1	SWITCH, Push Button, Foot Pedal	
40	1717050	1	SWITCH, Cruise Control, Grey, NO	<i>(Used on all models except CE/Export)</i>
41	2860665	5	SCREW, Pan Head Torx, #10-32 x 1/2	
42	1917365	5	LOCKWASHER, 3/16 #10	
43	1722309	1	PLUG, Hole 3", Round	
44	1686921	1	SENDER, Fuel Tank	<i>(Includes Ref. 45)</i>
45	1685303	1	GASKET	
46	1960536	2	CAPSCREW, Hex Washer Head Plastite, 1/4 x 1/2	
47	1716368	1	SWITCH, Seat, Grey, NC	
47	1718981	1	SWITCH, Seat, Grey, NC	<i>(CE/Export) (Used only on RMO/ACS Models)</i>
48	1730192	1	HARNESS, Wiring	
48	1733220	1	HARNESS, Wiring	<i>(CE/Export) (Used only on RMO/ACS Models)</i>
49	1734025	1	WIRING ASSEMBLY, All Conditions Shutdown	<i>(CE/Export) (Used only on RMO/ACS Models)</i>
50	1725302	1	12-VOLT OUTLET	<i>(CE/Export) (Used only on RMO/ACS Models)</i>

Footnotes:

Parts Manual for

SNAPPER®

***YARD TRACTORS ELECTRIC CLUTCH
HYDRO DRIVE RMO ACS
SERIES 0***

IT IS THE POLICY OF BRIGGS & STRATTON CORP TO IMPROVE ITS PRODUCTS WHENEVER IT IS POSSIBLE AND PRACTICAL TO DO SO. WE RESERVE THE RIGHT TO MAKE CHANGES OR ADD IMPROVEMENTS AT ANY TIME WITHOUT INCURRING ANY OBLIGATION TO MAKE SUCH CHANGES ON PRODUCTS

SNAPPER® McDonough, GA, 30253 U.S.A.