

Parts Manual for

SNAPPER®



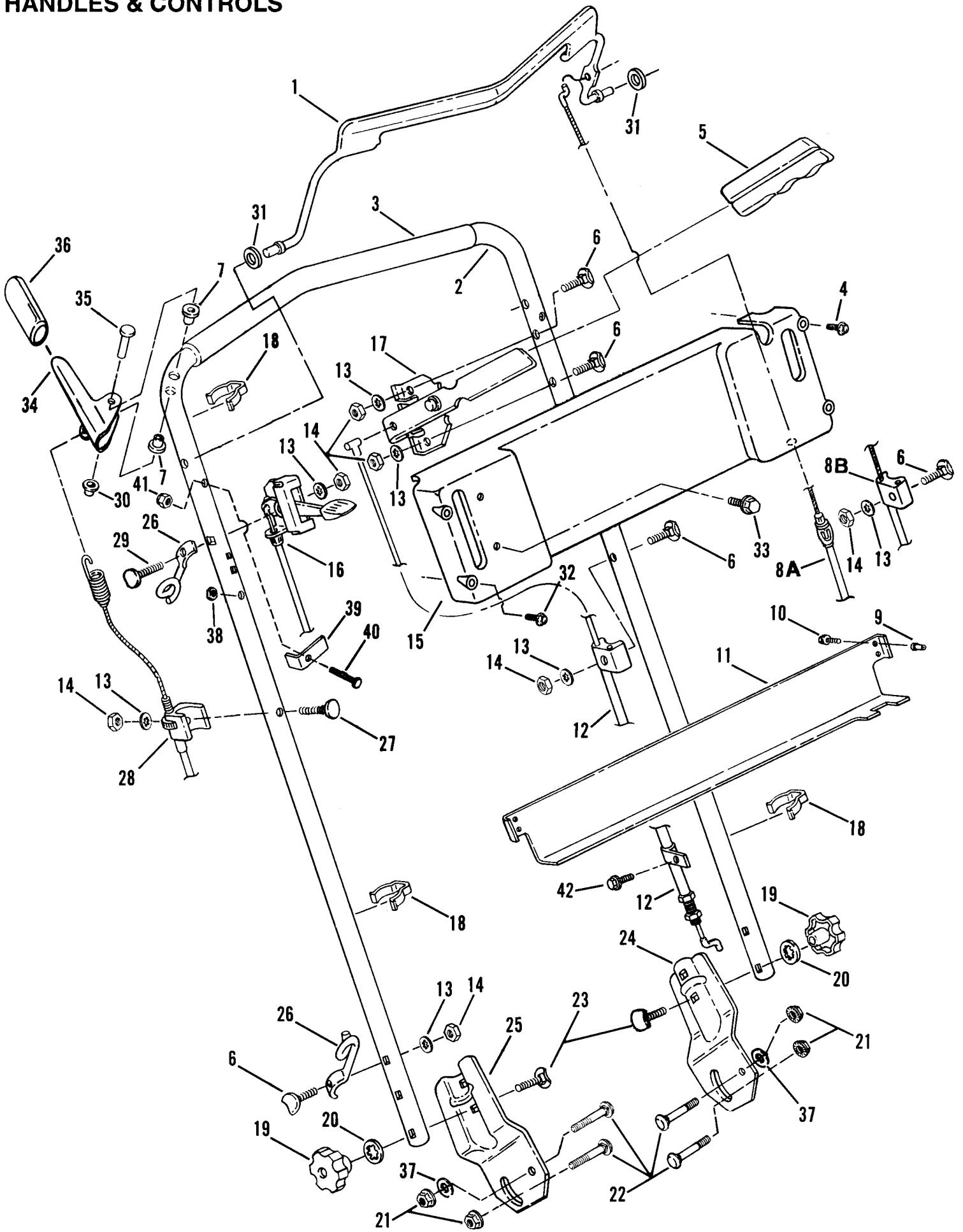
**21" SERIES 0* REAR
DISCHARGE CAST
ALUMINUM MODELS
XP21500, XP21550,
& XP21500KWV
(SELF-PROPELLED)
& MODEL
X21500 (PUSH)
WALK BEHIND
MOWERS**

NOTE! THE SERIES
NUMBER IS
THE LAST
NUMBER IN THE
FIVE DIGIT MODEL
DESIGNATION.

INDEX - GROUP	PAGE(S)
HANDLES & CONTROLS	2 - 3
CUTTING DECK, BLADE	4 - 5
DRIVE SYSTEM COMPONENTS	6 - 7
TRANSMISSION (DIFFERENTIAL)	8 - 9
WHEEL LATCHES, SHIELDS	10 - 11
FRONT & REAR WHEELS	12
ACCESSORIES - MULCHING KIT	13
ACCESSORIES - GRASS BAG KIT	14
DECALS	15

SNAPPER®McDonough, GA., 30253 U.S.A.

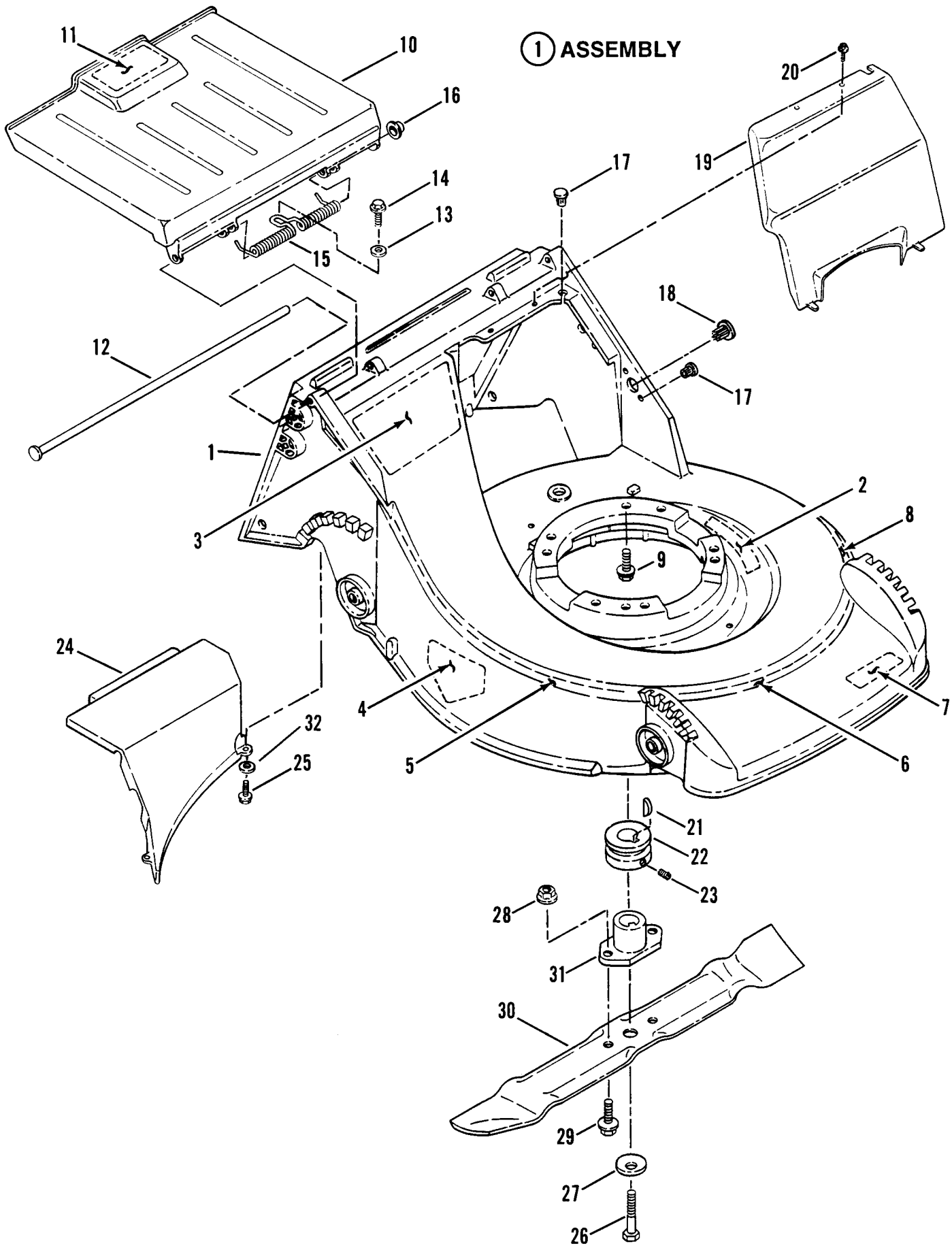
HANDLES & CONTROLS



HANDLES & CONTROLS

ITEM	PART NO.	DESCRIPTION
1	2-6539	CONTROL, Blade
2	3-3806	HANDLE, Upper (Push Models)
--	3-3717	HANDLE, Upper (Self-Propelled Models)
3	2-6216	GRIP, Upper Handle (Foam)
4	9-1266	SCREW, #10-24 x 2" Self-Tapping (2)
5	2-6420	GRIP, Speed Selector (Self-Propelled Models)
6	1-6242	BOLT, 1/4-20 x 1-1/2" Curved Head Carriage (4 each required for Self-Propelled Models) (2 each required for Push Models)
7	1-4343	BUSHING (2) (Self-Propelled Models)
8	2-6200	CABLE, Blade Control (Self-Propelled Models) (Briggs & Stratton Engine)
--	2-7938	CABLE, Blade Control (Self-Propelled Models) (Kawasaki Engine)
--	2-6692	CABLE, Blade Control (Push Models)
9	9-1182	INSERT, Nylon (4) (Self-Propelled Models)
10	9-1195	SCREW, #10-16 x 3/4" Self-Tapping (4) (Self-Propelled Models)
11	3-3928	BRACE, Control Panel (Self-Propelled Models)
12	2-6201	CABLE, Speed Selector (Self-Propelled Models)
13	9-1023	WASHER, 1/4 Internal Tooth Lock (6 each required for Self-Propelled Models) (3 each required for Push Models)
14	9-1100	NUT, 1/4-20 Hex (6 each required for Self-Propelled Models) (3 each required for Push Models)
15	5-3200	PANEL, Console (Includes Decals 2-6540, 2-6542, 2-6543 & 2-4984 as shown on Page 13) (Self-Propelled Models)
--	5-3287	PANEL, Console (Electric Start Briggs)
--	5-3288	PANEL, Console (Kawasaki Models)
16	2-5039	CONTROL, Throttle (Briggs & Stratton Engine)
--	2-7409	CONTROL, Throttle (Kawasaki Engine)
--	2-2548	CONTROL, Throttle (Briggs & Stratton Quantum Engine)
17	5-3202	ASSEMBLY, Speed Selector Quadrant (Self-Propelled Models)
18	2-3813	CLIP, Cable (3)
19	2-3735	KNOB, 5/16-18 Internal Thread (2)
20	9-0391	WASHER, 5/16 Internal Tooth Lock (2)
21	9-1070	NUT, 5/16-18 Hex Flange Lock (4)
22	9-0978	BOLT, 5/16-18 x 1-1/4" Carriage (4)
23	9-1189	BOLT, 5/16-18 x 2" Curved Head Short Neck Carriage (2)
24	3-3647	BRACKET, Handle (Left Hand)
25	3-3646	BRACKET, Handle (Right Hand)
26	2-2779	GUIDE, Rope (2)
27	9-1225	BOLT, 1/4-20 x 1-7/8" Curved Head Carriage
28	2-6202	ASSEMBLY, Clutch Cable (Self-Propelled Models)
29	9-1206	BOLT, 1/4-20 x 1-3/4" Curved Head
30	9-1020	NUT, 1/4" Push (Self-Propelled Models)
31	9-1076	WASHER, 5/16 Flat (2)
32	9-1265	SCREW, #10-24 x 1-1/2" Self-Tapping (2)
33	9-0913	SCREW, #10-24 x 1/2" Self-Tapping (2)
34	3-3910	LEVER, Wheel Drive (Self-Propelled Models)
35	2-3792	PIN, 1/4 x 1-1/2" Clevis (Self-Propelled Models)
36	1-4307	GRIP, Wheel Drive Lever (Self-Propelled Models)
37	9-1130	WASHER, 5/16 Flat (4)
38	9-1267	SCREW, #10-24 x 1-1/2" Self-Tapping
39	3-3949	BRACKET, Bail Stop (Push Models)
40	9-0532	SCREW, #10-32 x 1-3/8" Hex Head Machine (Push Models)
41	9-0376	NUT, #10-32 Hex Nyloc (Push Models)
42	9-0362	SCREW, 1/4-24 x 5/8" Self-Tapping (2)

ENGINE, CUTTING DECK, BLADE

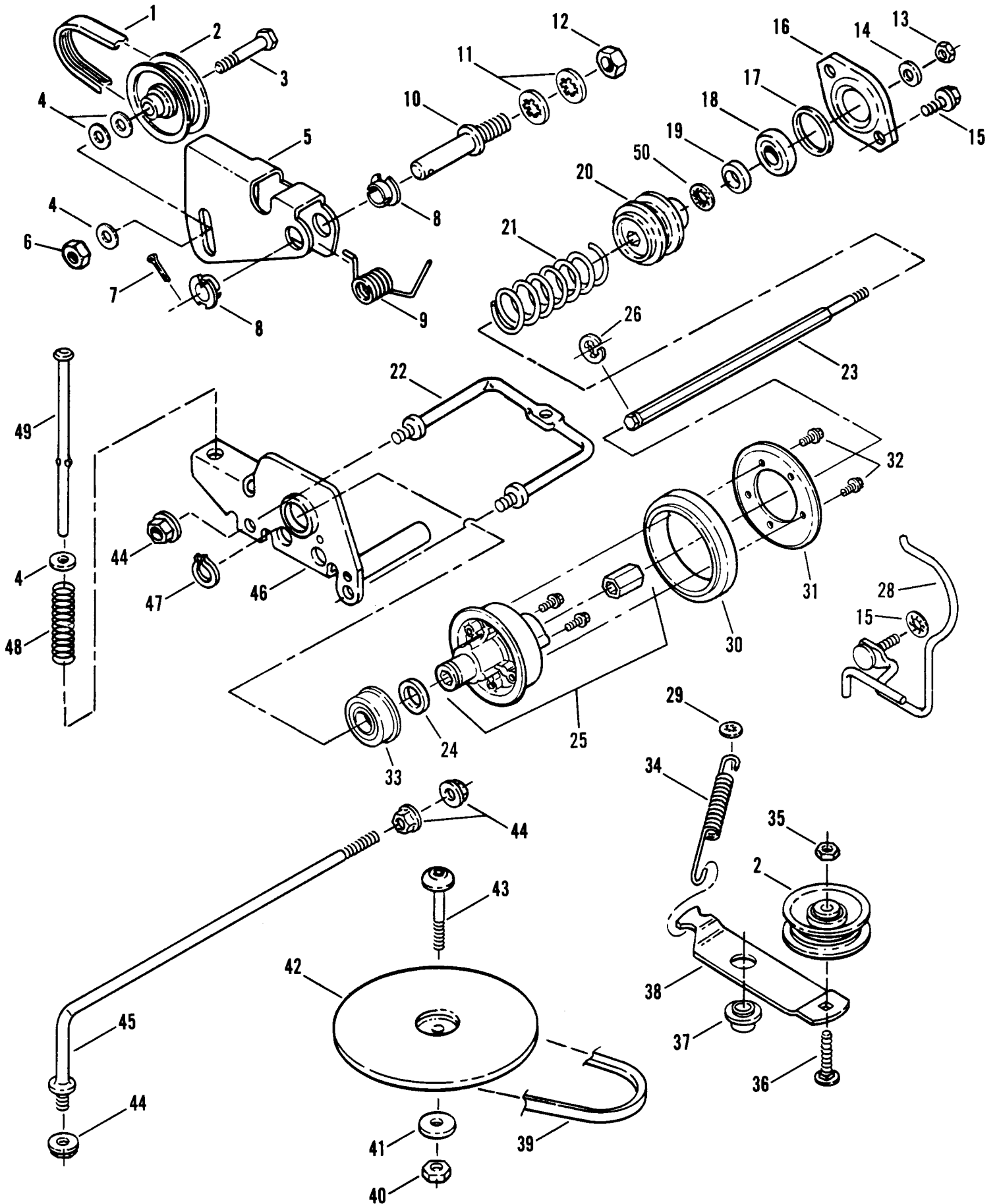


ENGINE, CUTTING DECK, BLADE

ITEM	PART NO.	DESCRIPTION
1	5-3201	ASSEMBLY, Deck & Decals (Includes items 2 thru 8)
2	2-6713	DECAL, WARNING
3	2-6561	DECAL, Mulching Convertible
4	1-3010	DECAL, DANGER
5	2-6508	DECAL, Stripe (Right Hand Side)
6	2-6506	DECAL, Stripe (Front)
7	2-6582	DECAL, SNAPPER, Mulching Convertible
8	2-6507	DECAL, Stripe (Left Hand Side)
9	9-0324	BOLT, 3/8-16 x 1" Self-Tapping (Engine Mounting) (3)
10	5-3199	ASSEMBLY, Door/Decal (Includes item 11) See Bulletin 1995-4
11	2-6541	DECAL, Quick Change Convertible
12	2-6105	ROD, Door Hinge
13	9-0055	WASHER, 1/4 Flat
14	9-1231	SCREW, #10-16 x 5/8" Self-Tapping
15	2-6139	SPRING, Torsion
16	1-2542	NUT, 5/16 Push
17	2-6259	PLUG, 1/4" (Push Models Only) (3)
18	2-4998	PLUG (Push Models Only)
19	2-4527	COVER, Drive
20	9-0913	SCREW, #10-24 x 1/2" Self-Tapping (2)
21	1-5894	KEY, #605 Woodruff (Briggs & Stratton Engine)
--	1-0783	KEY, #605 Woodruff (Kawasaki Engine)
22	1-5780	PULLEY, Engine (Briggs & Stratton)
--	2-1764	PULLEY, Engine (Kawasaki Engine)
23	9-0201	SCREW, 5/16-18 x 5/16" Hex Socket Set
24	3-4136	BAFFLE, Rear
25	9-0999	SCREW, 1/4-20 x 5/8" Truss Head (Torx) (4)
26	9-0483	SCREW, 3/8-24 x 1-3/4" Hex Head Cap (Gr. 5)
27	7-9268	WASHER, 3/8 Split Lock
28	7-6929	NUT, 3/8-16 Hex Top Lock (Nyloc) (2)
29	9-0143	BOLT, 3/8-16 x 1-1/4" Hex Head Cap (2)
30	2-6427	BLADE, 21" Cutter
31	2-6631	HUB, Blade Drive (Briggs & Stratton Engine)
--	2-6630	HUB, Blade Drive (Kawasaki Engine)
32	9-1253	WASHER, 9/32" Flat
--	2-6211	ENGINE, 5.0 HP Briggs & Stratton (Not Shown) ('93 Models & Earlier)
--	2-6205	ENGINE, 5.5 HP Briggs & Stratton (Not Shown) ('93 Models & Earlier)
--	2-7395	ENGINE, 5.5 HP Briggs & Stratton (Not Shown) ('94 Models & Later)
--	2-6874	ENGINE, 5.0 HP Kawasaki (Not Shown) ('94 Models & Later)

**NOTE! DECAL ITEMS
3, 4, 7, 9, & 11 ARE
SHOWN IN DETAIL
ON PAGE 13.**

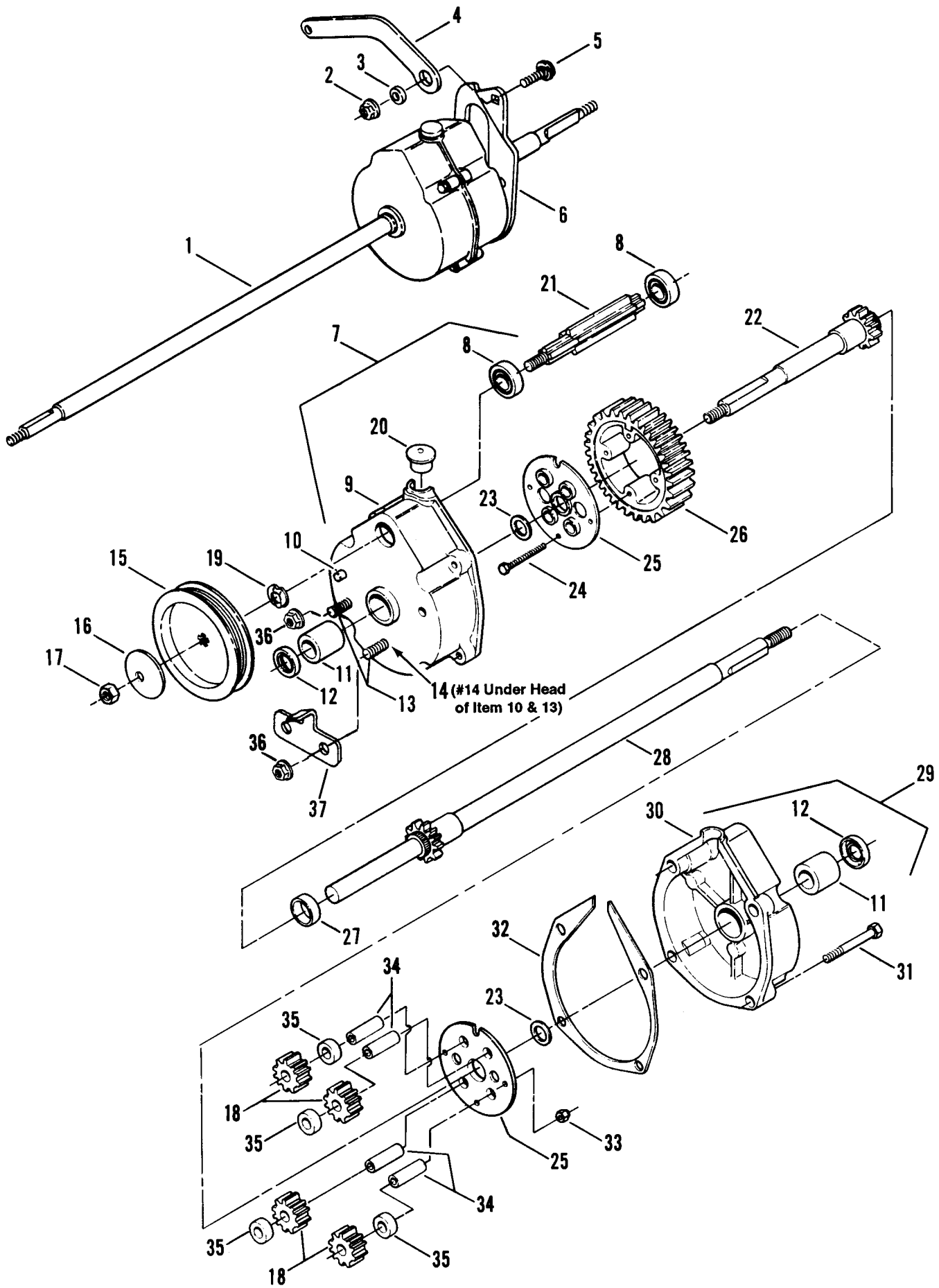
DRIVE SYSTEM COMPONENTS



DRIVE SYSTEM COMPONENTS

ITEM	PART NO.	DESCRIPTION
1	2-4934	BELT, Poly-V
2	1-2124	PULLEY, Idler (2)
3	9-0552	SCREW, 1/4-28 x 1-3/8" Hex Head Cap
4	9-0055	WASHER, 1/4 Flat (3)
5	3-3681	ARM, Idler
6	9-0303	NUT, 1/4-20 Hex Top-Lock
7	9-0555	PIN, 3/32 x 1/2" Cotter
8	1-2117	BUSHING, Idler Arm (2)
9	2-6416	SPRING, Idler Arm
10	2-6181	STUD, 3/8 x 2-1/8"
11	9-0390	WASHER, 3/8 Internal Tooth Lock
12	9-0155	NUT, 3/8-24 Hex
13	9-1215	NUT, 3/8-24 Hex Center Lock
14	1-2316	WASHER, Flat
15	9-0362	SCREW, 1/4-20 x 5/8" Self-Tapping (2)
16	3-3699	RETAINER, Bearing
17	1-1025	O-RING
18	2-8014	BEARING
19	2-6378	SPACER
20	2-4521	PULLEY
21	2-6124	SPRING, Return
22	2-4617	GUIDE
23	2-4520	SHAFT, Hex Drive
24	1-0121	WASHER, Shim
25	5-3217	ASSEMBLY, Hub (Includes one 1-1108 Bushing & two 9-0913 Screws)
26	1-4341	RING, Retaining
27	9-1065	NUT, 1/4-20 Hex Flange Lock
28	4-1573	GUIDE, Belt (Front)
29	1-1791	RETAINER, 5/16 Bolt
30	2-3364	RING, Driven
31	3-1013	PLATE, Pivot
32	9-0913	SCREW, #10-24 x 1/2" Self-Tapping (Torx) (5)
33	2-6693	BEARING
34	1-7326	SPRING, Idler Arm
35	9-0977	NUT, 1/4-20 Hex Jam
36	9-1181	BOLT, 1/4-20 x 1-1/8" Flat Head Carriage
37	2-6473	SPACER, Idler Arm
38	3-3932	ARM, Idler
39	1-2353	BELT, Engine Drive
40	9-0839	NUT, 7/16-14 Hex Lock
41	9-1236	WASHER, Flat
42	5-2925	ASSEMBLY, Drive Disc
43	2-4529	SCREW, 7/16-14 x 2" Truss Head (Torx)
44	9-1070	NUT, 5/16-18 Hex Flange Lock (5)
45	2-4996	ROD, Guide
46	5-3035	ASSEMBLY, Thrust Plate (Includes item 33)
47	1-0746	RING, Retaining
48	1-4432	SPRING, Plunger Rod
49	2-6131	ROD, Plunger
50	1-3946	RETAINER, 5/16 Bolt
51	9-1023	WASHER, 1/4 Internal Tooth Lock

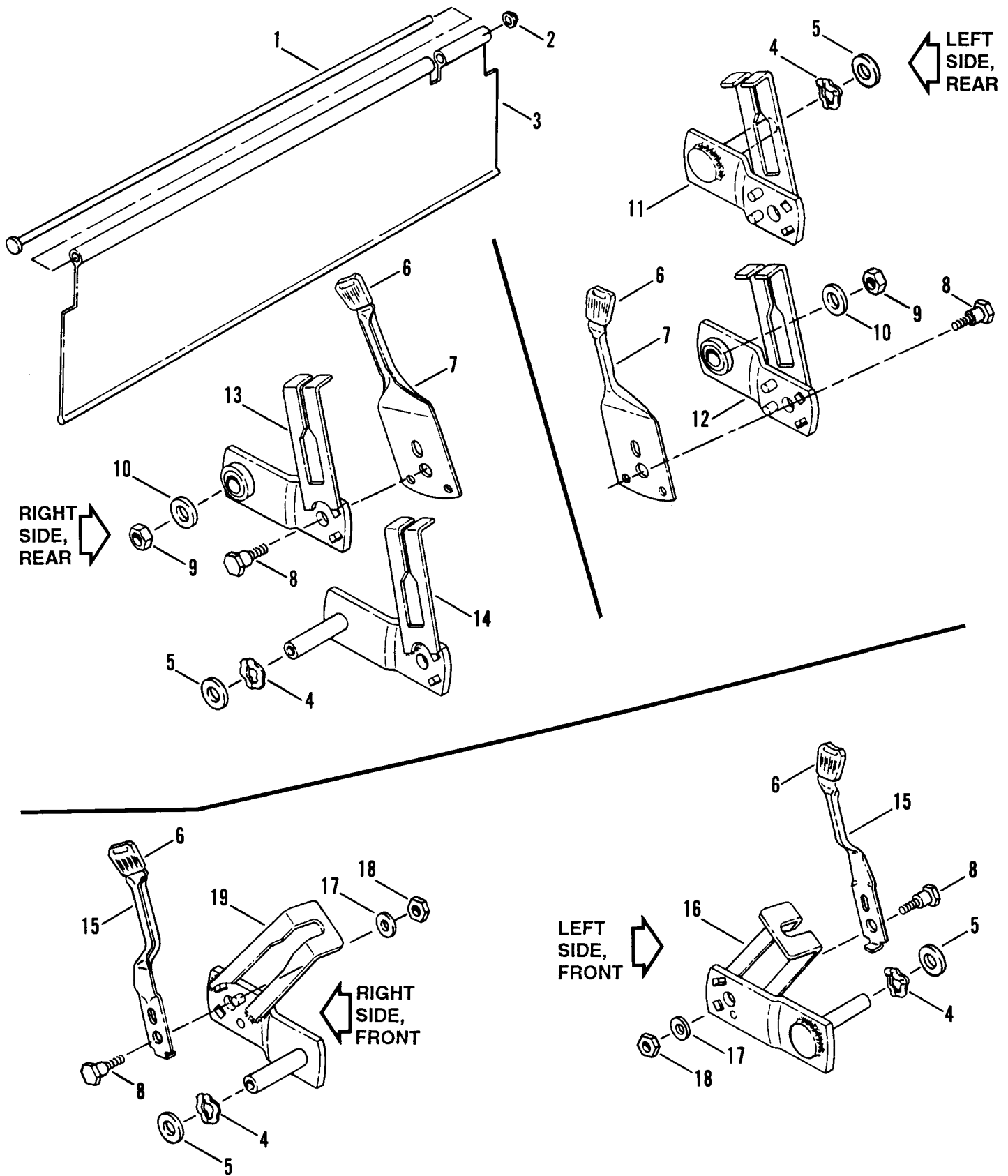
TRANSMISSION (DIFFERENTIAL)



TRANSMISSION (DIFFERENTIAL)

ITEM	PART NO.	DESCRIPTION
1	5-2904	ASSEMBLY, Transmission (Includes items 20 & P.N. 5-3203)
2	9-0951	NUT, 5/16-18 Hex Flange Lock
3	1-3849	SPACER
4	3-3831	LINK, Pivot
5	9-1211	BOLT, 5/16-18 x 5/8" Flat Head Carriage
6	3-3672	BRACKET, Differential
7	5-3042	ASSEMBLY, Housing, Right Side (Includes item 8 thru 14)
8	1-1767	BEARING, Ball
9	1-7080	HOUSING, Right Side
10	2-6115	STUD, 5/16 Rib Neck
11	1-2507	BEARING, Differential (2)
12	1-2314	SEAL, 5/8 I.D. (2)
13	1-4858	SCREW, 5/16-24 x 1 1/8" Rib Neck (2)
14	2-4442	GASKET, 5/8 O.D. (3)
15	2-6512	PULLEY, Poly-V Belt
16	1-4263	WASHER, Spring
17	1-1201	NUT, 5/16-24 Hex Lock (3)
18	2-1115	GEAR, Pinion (12 Teeth) (4)
19	1-1724	WASHER, Spring
20	1-6544	PLUG, Housing
21	5-0767	ASSEMBLY, Input Gear (Includes #1-1767 Ball Bearing)
22	5-2900	AXLE, Short
23	3-1965	WASHER, Thrust (2)
24	9-0557	SCREW, #10-32 x 1 1/2" Hex Head Cap (4)
25	3-1970	PLATE (2)
26	1-2495	GEAR, Differential (46 Teeth)
27	1-2543	SPACER, Axle Gear
28	5-2901	AXLE, Long
29	5-7634	ASSEMBLY, Housing, Left Side (Includes items 11, 12, & 30)
30	1-7015	HOUSING, Left Side
31	9-0911	SCREW, 1/4-20 x 1 1/4" Self-Tapping (4)
32	1-1774	GASKET, Housing
33	9-0376	NUT, #10-32 Hex Lock (4)
34	1-1110	SHAFT, Pinion (4)
35	1-2500	SPACER, Pinion Gear (4)
36	9-0585	NUT, 5/16-18 Hex Flange Lock
37	3-4077	GUIDE, Rear
--	5-0767	ASSEMBLY, Gear Input (Includes Items 8 and 21)

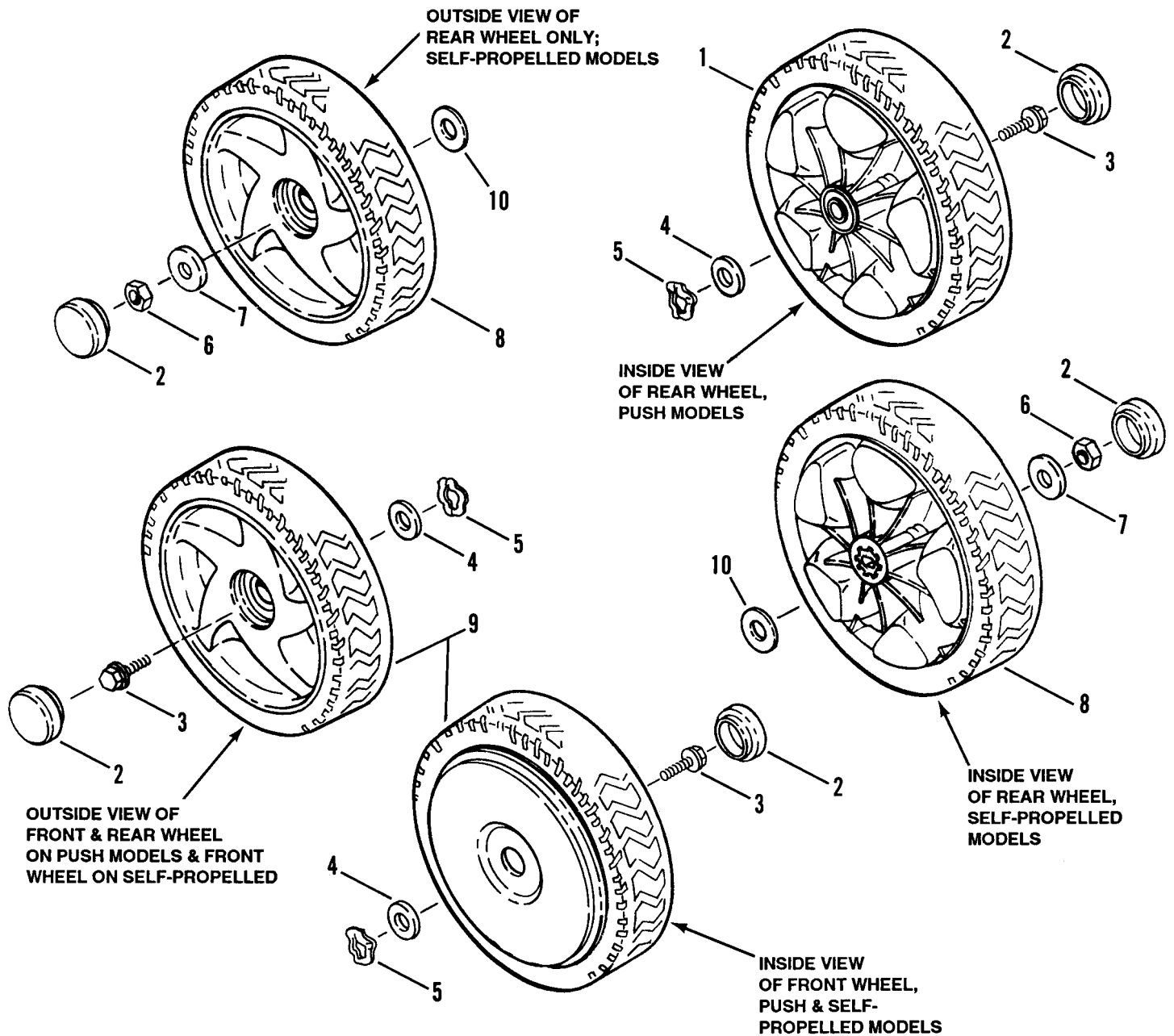
WHEEL LATCHES, SHIELDS



WHEEL LATCHES, SHIELDS

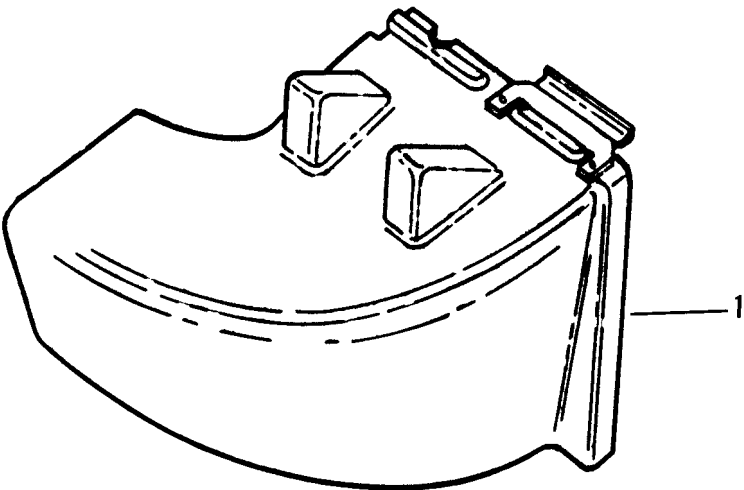
ITEM	PART NO.	DESCRIPTION
1	2-6275	ROD, Trail Shield
2	1-2542	NUT, 5/16 Push
3	2-4526	SHIELD, Trail
4	2-6257	WASHER, 17/32 Wave (Push & Self-Propelled Models) (4)
5	2-5074	WASHER, 17/32" I.D. x 1" O.D. Flat (4)
6	2-7702	GRIP, Latch (4)
7	5-3213	ASSEMBLY, Height Adjusting Latch (Rear) (Includes item 6) (2)
8	2-6676	BOLT, 5/16-18 x 1-9/32" Shoulder (4)
9	9-0377	NUT, 7/16-20 Hex Center Lock (Self-Propelled Models) (2)
10	3-1961	WASHER, 7/16 Flat (Self-Propelled Models) (2)
11	4-1503	BRACKET, Wheel, Left Hand Rear (Push Models)
12	5-3211	BRACKET, Wheel, Left Hand Rear (Self-Propelled Models)
13	5-3210	BRACKET, Wheel, Right Hand Rear (Self-Propelled Models)
14	4-1502	BRACKET, Wheel, Right Hand Rear (Push Models)
15	5-3009	ASSEMBLY, Height Adjusting Latch (Front) (Includes item 6) (2)
16	4-1500	BRACKET, Wheel, Left Hand Front (Push & Self-Propelled Models)
17	9-1076	WASHER, 5/16 Flat (Front) (Push & Self-Propelled Models) (2)
18	9-1067	NUT, 5/16-18 Hex Center Lock (Front) (Push & Self-Propelled Models) (2)
19	4-1499	BRACKET, Wheel, Right Hand Front (Push & Self-Propelled Models)
20	9-1076	WASHER, 7/16 Flat
21	9-0555	PIN, 3/32 x 1/2" Cotter

FRONT & REAR WHEELS



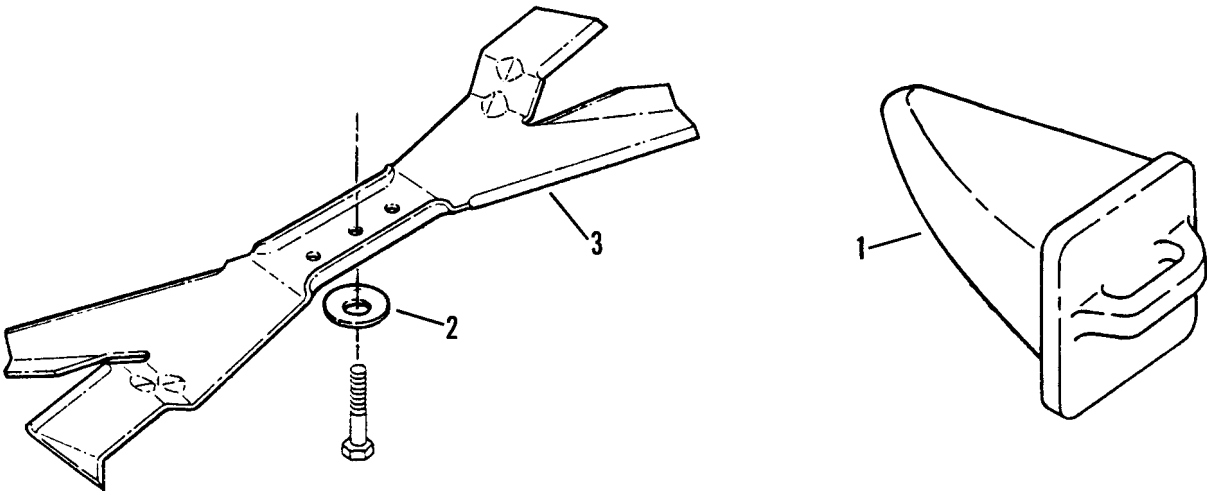
ITEM	PART NO.	DESCRIPTION
1	2-4552	ASSEMBLY Wheel, 8.0 x 2.0 Plastic (Rear) (Push Models) (2)
2	2-4656	CAP, Hub (4)
3	9-0361	SCREW, 5/16-18 x 5/8" Hex Self-Tapping (4 each, Push Models) (2 each, Self-Propelled Models, Front Only)
4	2-5074	WASHER, 17/32 I.D. Flat (Push & Self-Propelled Models) (4)
5	2-6257	WASHER, 17/32 Wave (Push & Self-Propelled Models) (4)
6	9-0377	NUT, 7/16-20 Hex Center Lock (Self-Propelled Models, Rear Wheels Only) (2)
7	3-1961	WASHER, 7/16 Flat (Self-Propelled Models, Rear Wheels Only) (2)
8	2-4553	ASSEMBLY, Wheel, 8.0 x 2.0 Plastic (Rear) (Push & Self-Propelled) (2)
9	5-3198	ASSEMBLY, Wheel, 8.0 x 2.0 Plastic (Front) (Push & Self-Propelled) (2)
10	9-1220	WASHER, 9/16 x 1-1/16" O.D. Thrust (2)

ACCESSORIES, ADAPTER KIT



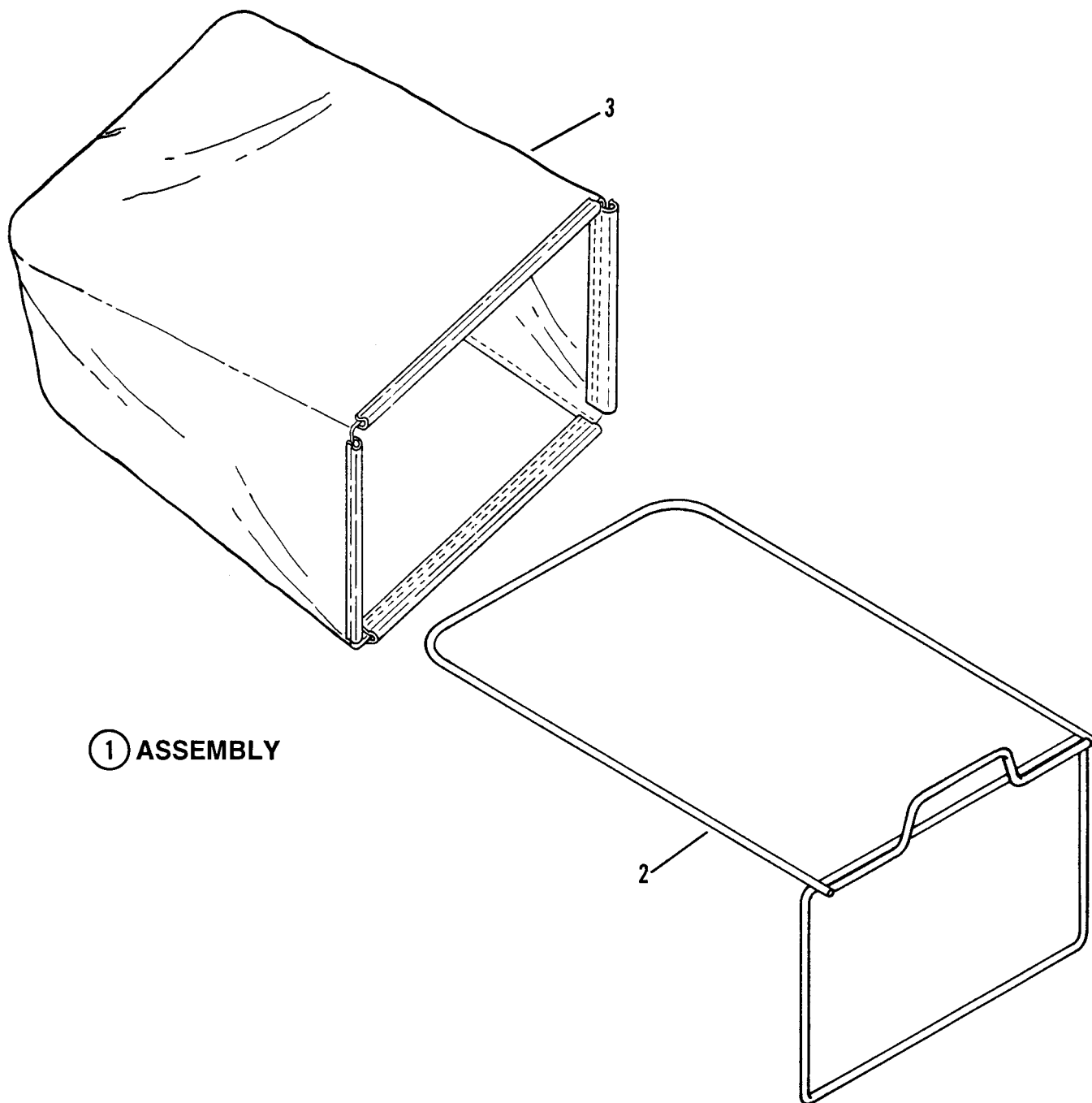
ITEM	PART NO.	DESCRIPTION
-	6-1264	KIT, Side Discharge (Includes Item 1)
1	5-3265	ADAPTER (Includes #2-6831 Decal)

ACCESSORIES, NINJA BLADE KIT



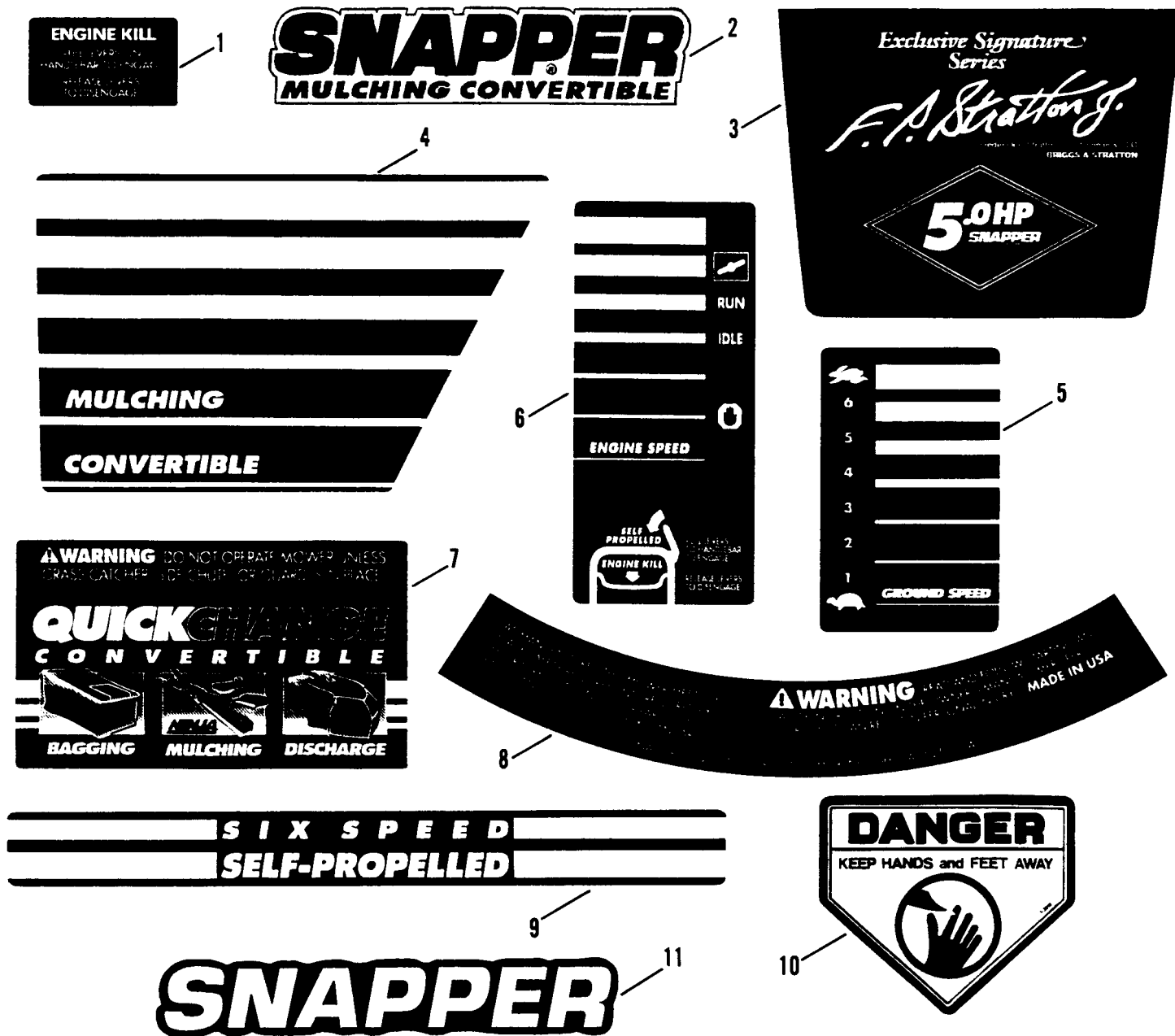
ITEM	PART NO.	DESCRIPTION
-	6-1263	KIT, Ninja Blade (Includes Items 1 Thru 3)
1	2-6461	PLUG, Mulching
2	1-2063	WASHER, Cone
3	2-6407	BLADE, 21" Ninja

ACCESSORIES, GRASS BAG COMPONENTS



① ASSEMBLY

ITEM	PART NO.	DESCRIPTION
1	6-1241	KIT, Grass Bag (Includes Items 2 & 3)
2	2-7857	FRAME, Grass Bag
3	2-4528	BAG, Grass



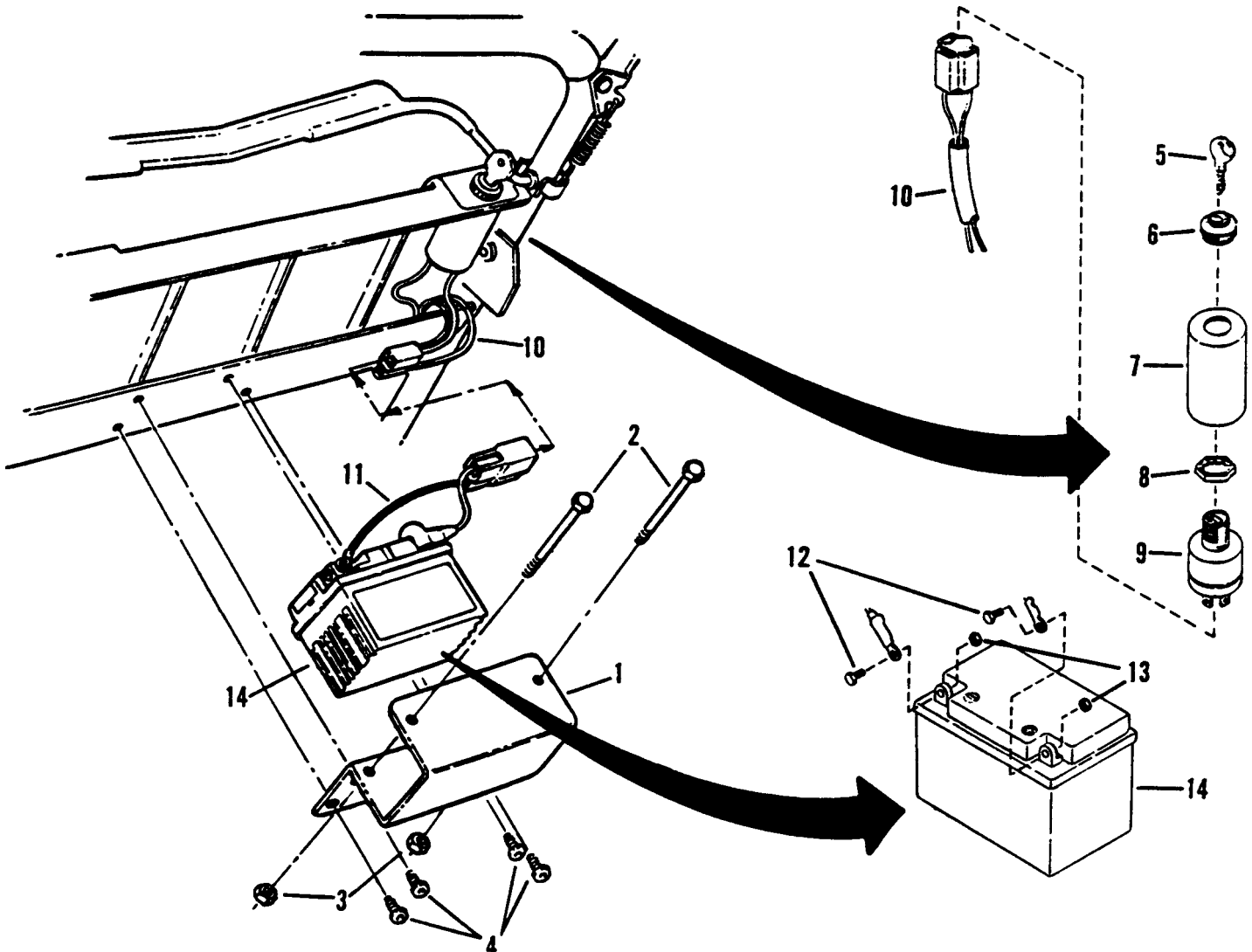
ITEM	PART NO.	DESCRIPTION
1	2-6509	DECAL, Engine Kill
2	2-6582	DECAL - SNAPPER, Nameplate (Mulching Convertible)
3	2-4271	DECAL, 5 HP Signature Series
-	2-7874	DECAL, 5.5 HP XTE
-	2-6878	DECAL, 5.5 HP (Kawasaki)
4	2-6561	DECAL, Mulching Convertible
5	2-6542	DECAL, Ground Speed
6	2-6824	DECAL, Engine Speed
-	2-7413	DECAL, Engine Speed (Kawasaki)
7	2-6541	DECAL, Quick Change Convertible
8	2-6713	DECAL - WARNING
9	2-6540	DECAL, Six Speed Self Propelled
10	1-3010	DECAL - DANGER
11	2-4984	DECAL - SNAPPER, Molded Logo (Chrome)
--	2-6506	DECAL, Front Deck Stripe (Not Shown)
--	2-6507	DECAL, Deck Stripe, Left hand (Not Shown)
--	2-6508	DECAL, Deck Stripe, Right Hand (Not Shown)

PARTS BULLETIN

NEW PARTS FOR 21" SERIES 0 WALK BEHIND (REAR DISCHARGE) MODELS WITH ELECTRIC START ENGINES ONLY

NOTE: THESE PARTS WILL BE ADDED TO PARTS MANUAL #06193 AT A LATER DATE.

ITEM	PART NO.	DESCRIPTION
1	3-3933	BRACKET, Mounting
2	9-1235	SCREW, 1/4-20 x 3-1/2" Hex Head Cap (2)
3	9-1099	NUT, 1/4-20 Hex Center Lock (2)
4	9-0999	SCREW, 1/4-20 x 5/8" Self-Tapping (4)
5	1-1167	KEY, Switch (2)
6	1-5207	ASSEMBLY, Seal & Face Nut
7	2-3894	COVER, Switch
8	1-5206	NUT, 3/4-20 Lock
9	1-5205	SWITCH, Ignition
10	2-6689	HARNES, Wiring
-	6-7012	KIT, Battery (Includes Items 12 Thru 14)
11	1-5488	HARNES, Battery
12	4-3977	SCREW, M10-8 x 10mm Hex Head Cap (2)
13	9-0932	NUT, M10-8 Hex (2)
14	1-9763	BATTERY 12V



Parts Manual for

SNAPPER®

**21" SERIES 0* REAR
DISCHARGE CAST
ALUMINUM MODELS
XP21500, XP 21550,
& XP21500KWV
(SELF-PROPELLED)
& MODEL X21500 (PUSH)
WALK BEHIND MOWERS**

IT IS THE POLICY OF SNAPPER TO IMPROVE ITS PRODUCTS WHENEVER IT IS POSSIBLE AND PRACTICAL TO DO SO. WE RESERVE THE RIGHT TO MAKE CHANGES OR ADD IMPROVEMENTS AT ANY TIME WITHOUT INCURRING ANY OBLIGATION TO MAKE SUCH CHANGES ON PRODUCTS MANUFACTURED PREVIOUSLY.

SNAPPER®McDonough, GA., 30253 U.S.A.