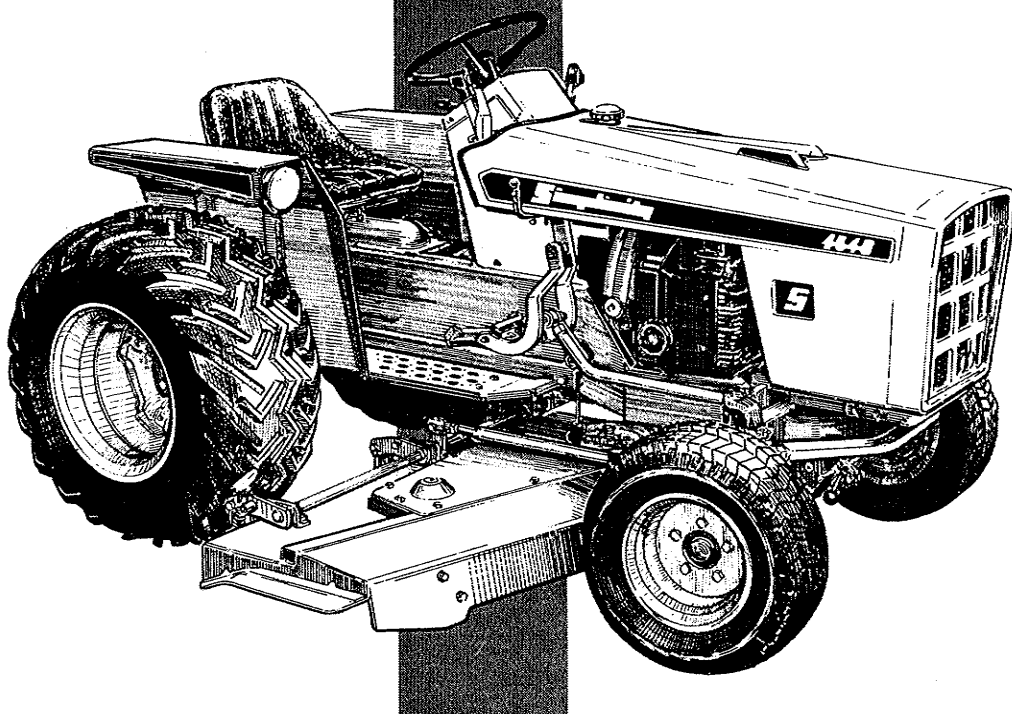


Simplicity[®]



OPERATOR'S & PARTS

60" ROTARY MOWER

MFR'S. NO. 698

TP - 1338

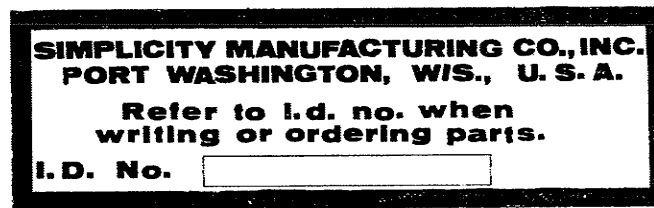
TO THE OWNER

You have made a wise choice in selecting the Simplicity 60" Mid-Mounted Rotary Mower for your tractor. It has been specially designed for your Simplicity tractor and constructed to give lasting superior performance.

Before attempting to operate the mower, study this manual and the manual for your tractor thoroughly. Pay special attention to the safety rules in this manual as well as the tractor owners manual. Your Simplicity equipment is designed with your safety in mind, but it is up to you to be an alert, safety conscious operator. Be sure anyone else who may operate the tractor is also familiar with the operation and safety instructions.

Your Simplicity equipment requires only a minimum of care, but the maintenance instructions should be followed carefully. Thank you for taking time to read this manual. The time spent will pay big dividends in the extra time saving performance you receive from your Simplicity mower.

When ordering replacement parts for your rotary mower, be prepared to give your Simplicity dealer the identification number found on the identification plate shown below. It is located on the rear of the mower deck above the leveling rollers. Locate the number now and record it below for easy reference.



IDENTIFICATION PLATE

SIMPLICITY NEW EQUIPMENT WARRANTY

The Company warrants Simplicity products to be free from defects in material and workmanship, except the Company makes no warranty, express or implied, with respect to tires, engines, generators and voltage regulators, which are warranted by their respective manufacturers. Any part covered by this warranty which is proven defective within one year (6 months for equipment used for rental, municipal or commercial purposes) under normal use, from date of purchase, will be replaced without charge, provided such part is returned to the factory, (if requested), and is found to be defective upon examination at the factory. This warranty does not apply to any Simplicity products altered outside of the Simplicity factory. **THE FOREGOING WARRANTY IS IN LIEU OF ALL OTHER WARRANTIES, EXPRESS OR IMPLIED OF MERCHANTABILITY, FITNESS FOR A PARTICULAR PURPOSE, PERFORMANCE, OR OTHERWISE.** The Company's obligation under its warranty is strictly and exclusively limited to the replacement of such parts, and in no event shall the Company be liable for any other damages, whether direct, immediate, incidental, special, or consequential. Simplicity Manufacturing Company, Inc., reserves the right to modify or change specifications without prior notification. There are no warranties which extend beyond the description of any Simplicity product.

TABLE OF CONTENTS

SAFETY PRECAUTIONS	1
REQUIRED ACCESSORIES AND OPTIONS	2
RECOMMENDED ACCESSORIES AND OPTIONS	2
INSTALLATION	2
REMOVING THE MOWER	4
OPERATION	4
BEFORE OPERATING THE MOWER	4
ENGINE SPEED SETTING	4
THREE SPEED TRANSMISSION GEAR SELECTION	4
POSITIONING THE MOWER	4
ENGAGING THE POWER TAKE OFF	4
CONTROLLING GROUND SPEED	5
MOWING PATTERN	5
MOWING HINTS	5
TROUBLE SHOOTING GUIDE	5
ADJUSTMENTS	6
CUTTING HEIGHT ADJUSTMENT	6
FRONT TO REAR HEIGHT ADJUSTMENT	6
BELT TENSION ADJUSTMENT	6
MAINTENANCE	7
ORDERING REPLACEMENT PARTS	7
AFTER EACH USE	7
EVERY 25 HOURS	7
OUT OF SERVICE PROTECTION (STORAGE)	7
BLADE REPLACEMENT	8
BELT REPLACEMENT	8
SPECIFICATIONS	9

SAFETY PRECAUTIONS TO PROTECT YOURSELF AND OTHERS

Read and become familiar with the owners manual for your tractor and the mower before operating the mower.

Do not allow anyone to use the mower unless they have been instructed in how to operate it safely.

Never attempt to adjust, repair or service the mower while the tractor engine is running.

Do not allow others near the mower when it is operating.

Stay clear of the drive belt, pulleys and mower blades when the tractor engine is running.

Be sure the mower blades and drive belt have stopped turning before attempting to adjust, repair or service the mower.

CAUTION: THE BLADES MAY CONTINUE TO ROTATE SEVERAL SECONDS AFTER THE CLUTCH HAS BEEN DISENGAGED OR THE ENGINE SHUT OFF.

Clear work area of objects which might be picked up and thrown.

Disengage power to the mower and stop the engine before leaving the operators position.

Mow only in daylight or good artificial light.

Check the blade mounting bolts for proper tightness whenever the mower has been removed from the tractor.

Use caution when mowing on sloping surfaces.

MFG. NO. 698 60" MID-MOUNTED MOWER

REQUIRED ACCESSORIES AND OPTIONS

Hitch assembly for mid-mounted mowers.

RECOMMENDED ACCESSORIES AND OPTIONS

Front and rear turf tires and wheels used on the tractor will give the best looking lawn under most operating conditions.

High flotation tires give better traction than the turf tire, but may leave a slight tread mark in a soft lawn.

Agricultural tires give good traction and can be used for mowing, but will leave a definite tread mark on most lawns.

Rear wheel weights will give better traction and stability when mowing on hills.

INSTALLATION

1. See figure 1. Using four pins (A) and spring clips (B), mount the hitch for center mounted attachments under the tractor front axle.
2. To get the mower in position under the tractor, either slide the mower under the tractor from either side or position the mower in front of the tractor and drive the front wheels over the mower deck as shown in figure 2. If the mower is to be driven over while on a smooth, hard surface, boards or ramps (figure 2, item A) similar to those shown must be placed at the rear of the mower to allow the front wheels to climb on the mower without pushing the mower ahead. Remove the ramps as soon as the tractor front wheels are on the mower deck. If the mower is on a soft ground surface, the ramps will not be required as the front edge of the mower will dig into the ground and prevent the mower from sliding. **CAUTION: BE SURE THE FRONT WHEELS OF THE TRACTOR ARE CENTERED BETWEEN THE MOWER HEIGHT ADJUSTING HANDLES BEFORE ATTEMPTING TO DRIVE THE TRACTOR ON THE MOWER DECK.**

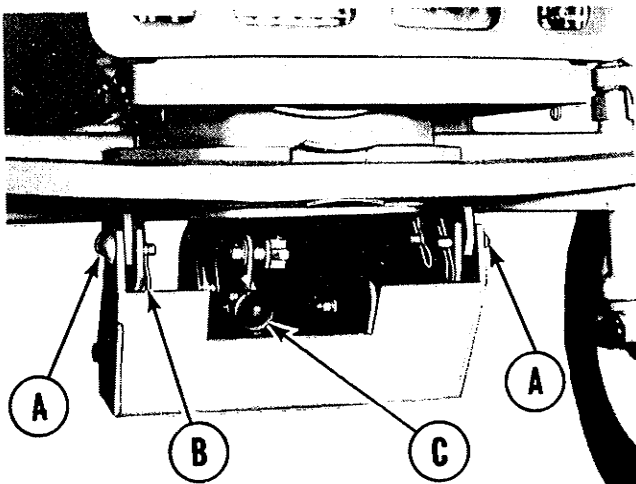


Figure 1. Hitch for center mounted attachments shown mounted on tractor.

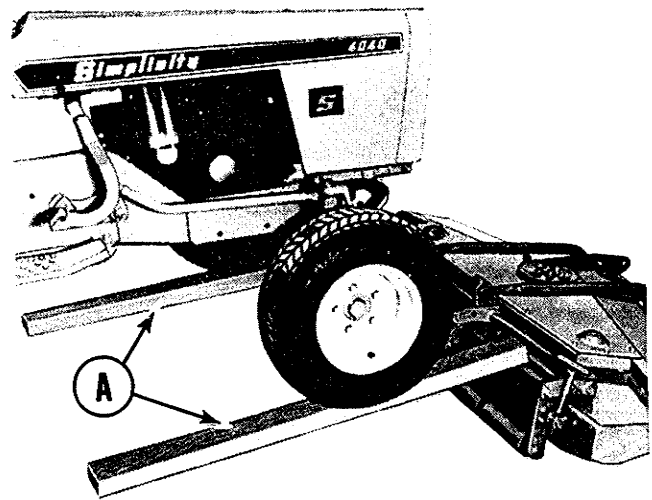


Figure 2. Ramps used to drive tractor onto mower deck.

3. See figure 3. Remove the two center lift cables from their storage position under the footrests by removing the two spring clips (A) and pins (B).
4. See figure 4. Use the pins (A) and spring clips (B) removed in step 3 to fasten the rear of the lift cables to the rockshaft at the rear of the tractor.
5. See figure 5. Attach the two center lift cables to the mower eyebolts using the pins (A) and spring clips (B) provided with the mower. If the cables do not reach the mower deck, start the engine and move the hydraulic control lever forward to lower the cables completely.
6. **CAUTION: IF IT IS NECESSARY TO OPERATE THE ENGINE WITHOUT AN OPERATOR IN THE TRACTOR SEAT, BE SURE THE 3 SPEED TRANSMISSION IS IN NEUTRAL, THE PARKING BRAKE LOCKED AND THE ENGINE RUNNING NO FASTER THAN AN IDLE.** Start the engine and move the hydraulic lift control rearward to

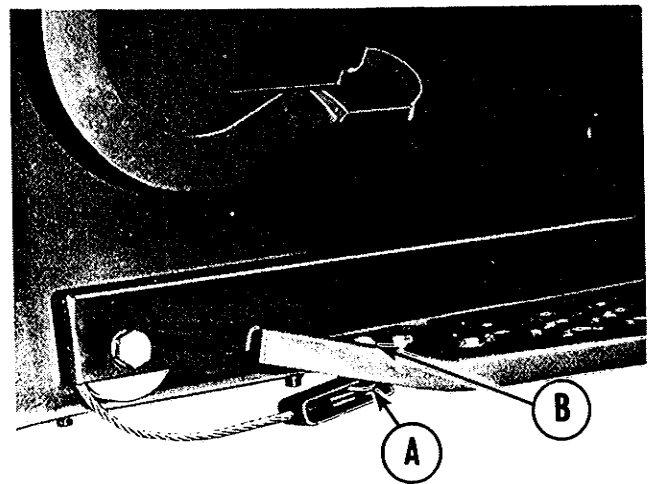


Figure 3. Center lift cable in storage position under footrest.

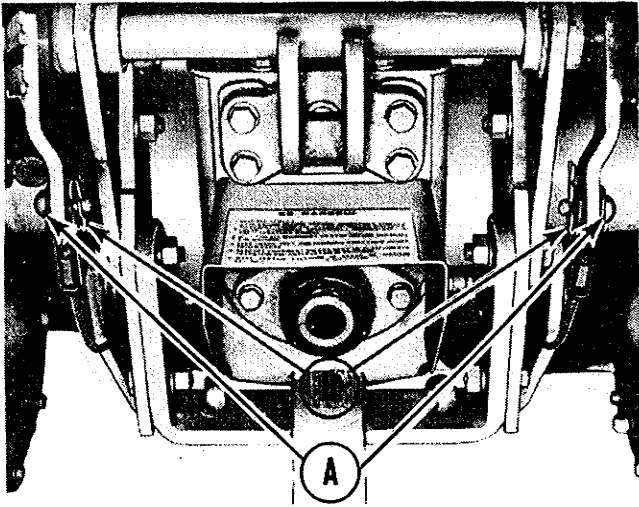


Figure 4. Center lift cables fastened to rockshaft at rear of tractor.

raise the mower slightly. As the mower is raised, it can be positioned so the front hitch members fit into the hitch assembly as shown in figure 6.

7. See figure 6. Use two pins (A) and spring clips (B) to fasten the mower to the hitch assembly.

8. See figures 7 and 8. Raise the tractor hood and feed the mower drive belt over the engine front power-take-off pulley and down around the idler pulleys located in the hitch assembly. Be sure the belt "V" is in the pulley grooves and twisted correctly as shown.

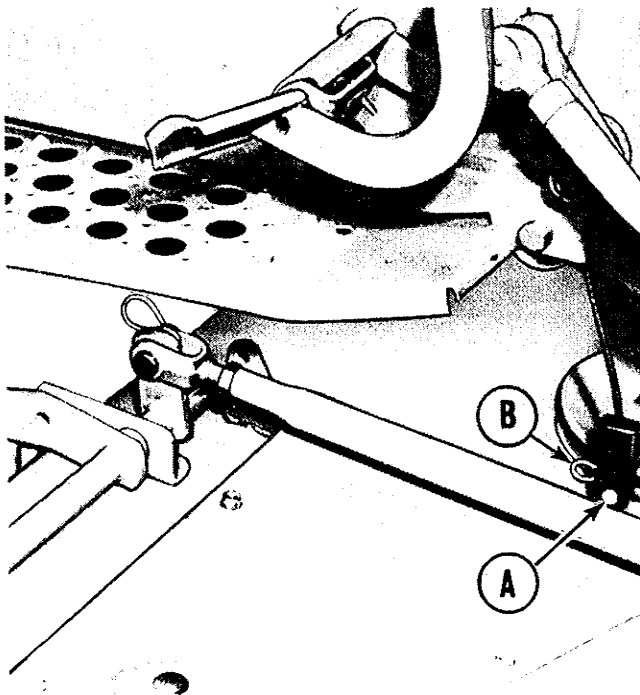


Figure 5. Mower positioned under tractor and attached to center lift cables.

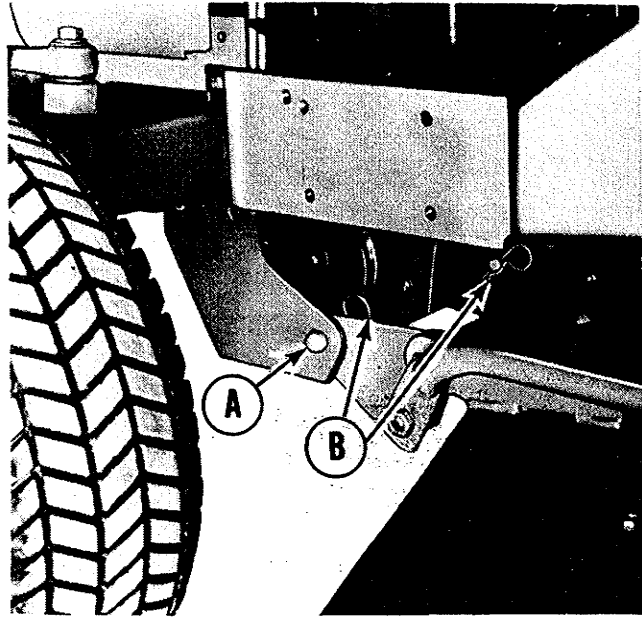


Figure 6. Mower mounted to hitch for center mounted attachments.

9. Insure the belt tightening handle (figure 1, item C) is pulled forward in the release position, then place the drive belt over the mower pulley.

10. See figure 1. Push the belt tightening handle (C) down and back to tighten the belt.

11. Check the distance between the set collar and rod guide shown in figure 12. If the distance is not 1/2" - 5/8" adjust the belt tension as explained on page 6 of this manual.

12. See figure 7. Check the belt at points (A) to insure it is at least 1/4" away from the tractor frame and battery. If it is not, adjust the idler pulley according to the instructions on page 6 of this manual under Belt Tension Adjustment.

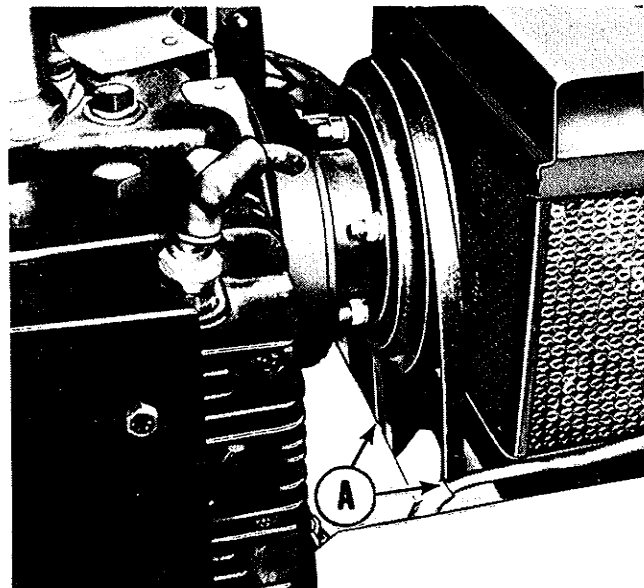


Figure 7. Tractor hood raised to show mower drive belt installed on power take off pulley.

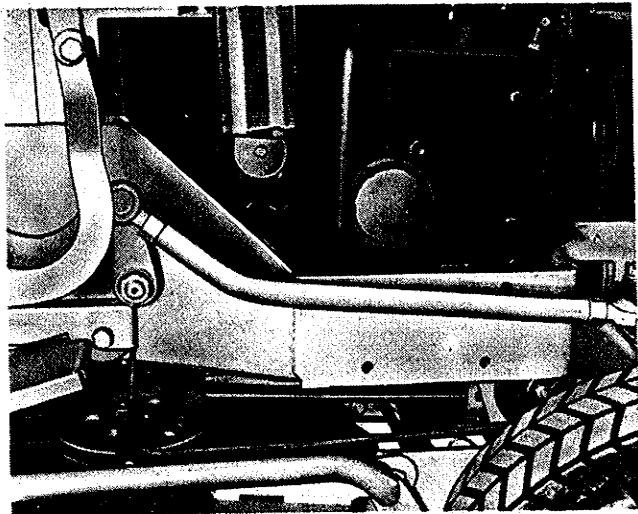


Figure 8. Mower drive belt installed as seen from right side of tractor.

REMOVING THE MOWER

CAUTION: BEFORE ATTEMPTING TO ADJUST, SERVICE OR REMOVE THE MOWER, BE SURE THE ENGINE IS SHUT OFF, THE PARKING BRAKE SET, AND THE MOWER BLADES HAVE STOPPED TURNING.

1. See figure 1. Pull the belt tightening handle (C), forward to release belt tension.
2. Remove the belt from the mower pulley, idler pulleys, and power take off pulley.
3. See figure 9. The mower may be slid out from under the tractor, after performing steps 4, 5, and 6 but it is much easier to back the front wheels over the mower. To do this a board (A) approximately 2" thick, at least 4" wide, and about 4' long should be lined up behind each rear wheel of the tractor and the tractor backed onto the boards until the front edge of the boards is even with the mower rollers.
4. See figure 6. Raise the mower slightly to a position where the mower is balanced from the center lift cables. Stop the engine and remove the spring clips (B) and pins (A).
5. See figure 5. Lower the mower and remove the spring clips and pins from the center lift cables. Store the pins and spring clips in the mower eyebolts.
6. See figure 4. Remove the spring clips and pins from the rockshaft at A. and use them to fasten the center lift cables in their storage position under the tractor footrests (figure 3).
7. Back the tractor very slowly over the mower. The mower leveling rollers should stop against the boards and prevent the mower from moving rearward.
8. See figure 1. If the tractor is to be used for jobs where the hitch for mid-mounted attachments is not required remove the four spring clips (B) and pins (A) holding the hitch assembly to the tractor.

OPERATION

BEFORE OPERATING THE MOWER

1. Read this manual and the owners manual for the tractor carefully. Be sure you are familiar with the safety precautions, controls, and operating instructions.

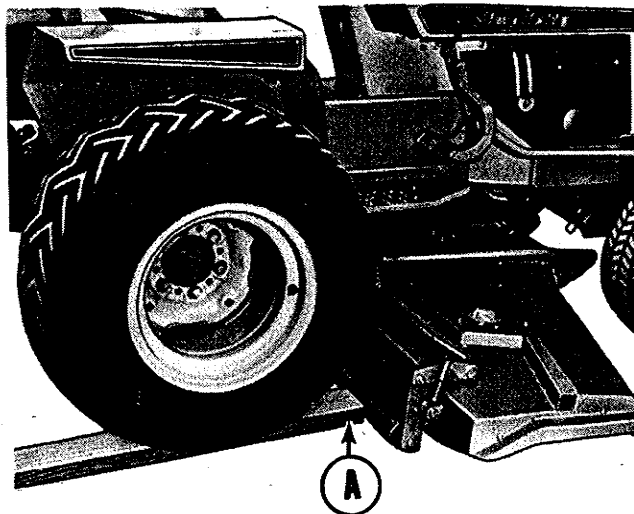


Figure 9. Mower prepared for backing over to remove from beneath tractor.

2. Check the mower carefully to be sure it is properly installed.
3. Be sure the tractor tires are properly inflated as explained in the tractor owners manual.
4. Be sure the mower is properly adjusted front to rear as explained on page 6 of the Adjustment section.
5. Check the condition of the mower blades. Keep them sharp and in balance.
6. Lubricate the grease fittings as instructed on page 7 of this manual.
7. Clear the lawn of all sticks, stones, wire and other debris which may be caught or thrown by the mower blades.
8. Determine the best method of mowing according to the dimensions, terrain and obstructions of the lawn.
9. Adjust the cutting height of the mower as explained on page 6 of the Adjustments section.
10. Lock the tractor brakes together so they operate simultaneously. See page 7 of tractor owners manual. Using the tractor brakes individually may damage the lawn surface.

ENGINE SPEED SETTING

The engine should be operated at 3/4 to full speed when using the mower. When the grass is wet or higher than 3 inches, the engine should be run at full speed. Three-fourths to full engine speed may be used when mowing light grass.

THREE SPEED TRANSMISSION GEAR SELECTION

The tractor three speed transmission can be placed in third gear for most operating conditions and the hydrostatic transmission control lever used to regulate ground speed. When mowing hilly or rough terrain, the tractor will be more efficient if second gear is used.

POSITIONING THE MOWER

The mower is lowered into operating position by pushing the tractor hydraulic control lever forward until the lift cables are loose.

ENGAGING THE POWER TAKE OFF

After the tractor engine has been started, the mower may be

engaged by pushing the **FRONT CLUTCH** switch forward to the **ON** position.

CONTROLLING GROUND SPEED

The best ground speed will vary greatly with the type of terrain and the amount and condition of grass being cut. Ground speed should be controlled by the tractor hydrostatic transmission control lever. For normal conditions, where the terrain is smooth and the grass dry and not extremely tall a ground speed of about 4 to 6 miles per hour may be best. However, if the terrain is rough and the grass tall or wet, a slower ground speed of about 2 or 3 miles per hour is sufficient. The operation chart in the 4040 tractor owners manual shows approximate control settings to achieve these speeds.

MOWING PATTERN

The size and type of area to be mowed determines the best mowing pattern to use. Obstructions such as trees, fences, and buildings must also be considered. In most cases, making one or two passes in a clockwise direction around the area to be mowed is advisable to keep cut grass off of fences, walks, etc. The remainder of the mowing should normally be

done in a counter-clockwise direction so the clippings are dispersed on the cut area.

On moderate size, frequently mowed lawns where the grass is light, it is practical to mow in a clockwise direction so the grass clippings are thrown toward the center of the lawn and concentrated for easy pickup and removal.

MOWING HINTS

Most lawns should be mowed to keep the grass approximately two to three inches high. Best results are obtained by cutting often and not too short. To keep a green lawn, never mow more than one third off the height of the grass or a maximum of one inch in one mowing. For extremely tall grass, set the cutting height at maximum for the first mowing, then reset to the desired height and mow again. Allow the grass to grow to three inches, then cut off only the top inch.

On thick or springy grass or soft ground, the mower rollers may sink into the ground giving too low a cut. Adjust the cutting height to get the desired height of cut. For best appearance, grass should be cut in the afternoon or evening when it is free of moisture.

TROUBLE SHOOTING GUIDE

PROBLEM OR SYMPTOM	POSSIBLE CAUSES	CHECKS AND CORRECTIONS
Mower cuts uneven.	Mower not leveled. Tractor tires not correctly inflated. Mower front to rear height adjustment incorrect.	Level mower. See page 6. Inflate according to tractor owners manual. Adjust as instructed on page 6.
Rough looking cut.	Engine speed too slow. Blades not sharp. Power take off belt slipping.	Run engine at full speed. Sharpen or replace blades. Check belt tension adjustment. See page 6.
Mower will not raise or raises unevenly.	One or both lift cables not attached or broken.	Attach or replace lift cable.
Engine stalls easily.	Ground speed too fast. Engine RPM too slow Engine lacks power.	Reduce ground speed. Run engine at full throttle. See tractor trouble shooting guide in tractor manual.
Mower vibration is noticeable.	Blade mounting bolts loose. Mower blades bent. Blades damaged or out of balance.	Tighten bolts to 45 ft. pounds. Replace blade. Replace or balance blades.
Tractor tires scuff lawn.	Wheel brakes being used individually. Incorrect tractor tires being used.	Lock tractor brakes together. See recommended Accessories (page 2)
Excessive belt breakage occurs.	Belt tension incorrectly adjusted. Pulleys rough or loose. Using incorrect belt.	Adjust belt tension. See page 6 Repair or replace pulleys. Use only genuine Simplicity replacement parts.
Tractor handles poorly.	Tires not properly inflated. Moving too fast on rough or sloping surface.	Inflate tires according to tractor owners manual. Reduce travel speed.

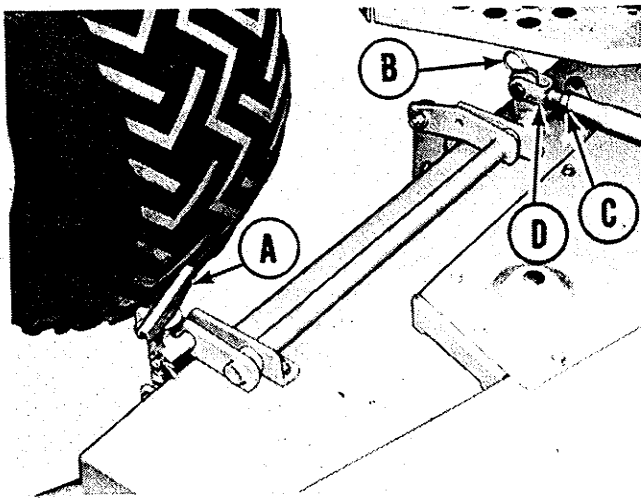


Figure 10. Right side of mower shown mounted beneath tractor.

ADJUSTMENTS

CUTTING HEIGHT ADJUSTMENT

See figure 10. The cutting height of the mower is adjustable 1-5/8" to 3 inches. To adjust the height of cut, turn the adjusting handles (A) on each side of the mower clockwise to raise the blades and counter-clockwise to lower them. The two handles should be rotated the same direction and number of turns so they carry equal weight of the mower and keep the mower level. When the two handles require equal effort to turn them, it is a good indication the mower is level; however, it is advisable to occasionally drive the tractor and mower on a smooth, level surface and check the height of the two outside blades to insure they are cutting at equal height.

FRONT TO REAR HEIGHT ADJUSTMENT

See figure 11. To give the best mowing job, the mower should be adjusted so the front of the center blade (B) is 1/4" higher than the rear of the two outside blades (A) when

the mower is setting on a smooth hard surface. If adjustment is required, proceed as follows:

1. Check the air pressure in the tractor tires to insure they are inflated according to the tractor owners manual.
2. With the mower properly installed drive the tractor on a smooth, flat surface, such as a level concrete floor.
3. Push the hydraulic lift control lever forward to lower the mower completely.
4. **SHUT OFF THE TRACTOR ENGINE. DO NOT ATTEMPT TO MAKE ANY ADJUSTMENTS ON THE MOWER WHILE THE ENGINE IS RUNNING.**
5. See figure 11. Rotate the right mower blade so it is parallel with the tractor and the tips point straight toward the front and rear.
6. Turn the mower height adjusting handles (figure 10, item A) so the rear tip of the right blade (figure 11, item A) is 2 inches from the ground surface.
7. Repeat steps 5 and 6 on the left side of the mower so the rear tip of the left blade is 2 inches from the ground surface.
8. If any height adjustment is needed to correct the height of the left blade, recheck the right blade height.
9. Turn the center blade so the tips are pointing straight toward the front and rear. Measure the distance from its front tip to the ground surface. (figure 11, item B). The distance should be 2-1/4" - 1/4" more than the distance from the rear tip of the outer blades to the ground surface.
10. See figure 10. If adjustment is needed, remove the two spring clips and pins (B), loosen the locking nuts (C) and turn the eyebolts (D) clockwise to raise the front of the mower or counter-clockwise to lower the front of the mower as needed. Always turn each of the two eyebolts the same number of turns in the same direction.
11. See figure 10. After making the adjustment, tighten the locking nuts (C), reinstall the pins (B) and spring clips.
12. Recheck both the side and center blade heights. If the adjustment is not correct, repeat steps 10 and 11.

BELT TENSION ADJUSTMENT

See figure 12. Tension on the mower drive belt is checked by

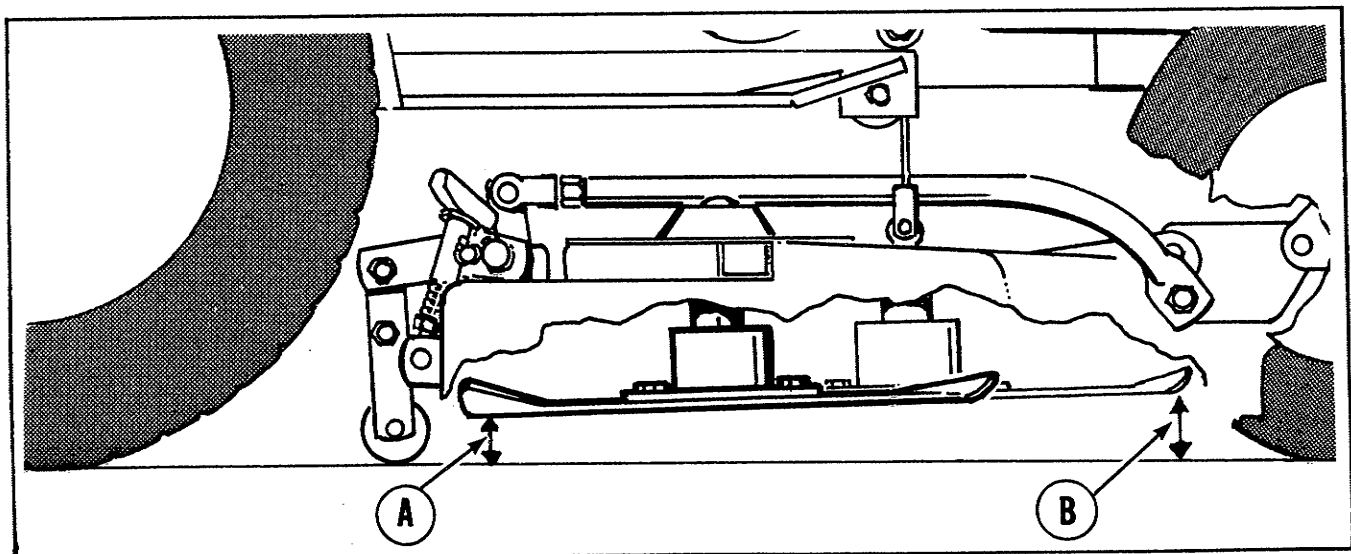


Figure 11. Front to rear height adjustment checked from right side of mower.

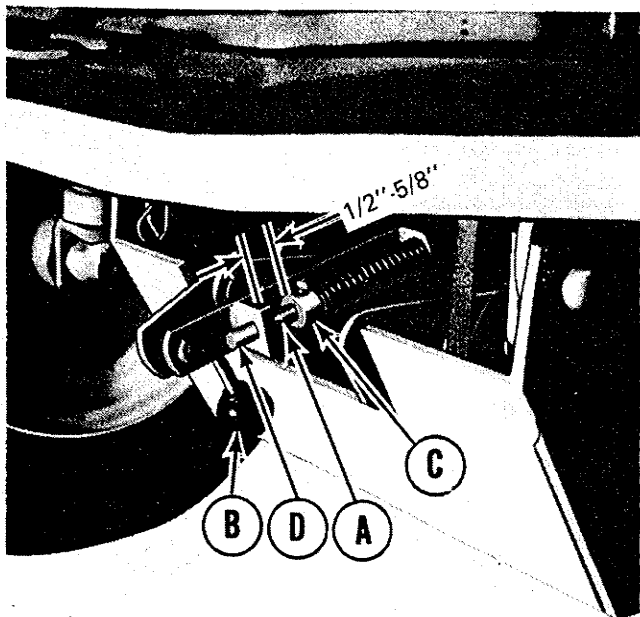


Figure 12. Belt tightening adjustment located on front hitch assembly.

measuring distance (A). The distance should be 1/2" - 5/8" when the belt is properly installed and the belt tightening handle (B) is pushed down and back in the "tighten" position. If belt tension requires adjustment, proceed as follows:

1. See figure 12. Release tension on the drive belt by pulling forward and up on the belt tightening handle (B).
2. See figure 12. Loosen the screw in set collar (C) and pull the rod (D) ahead so more of it is exposed to increase belt tension or push the rod back to decrease belt tension.
3. Tighten the screw in set collar (C).
4. Tighten the belt and check the belt tension distance (figure 12, item A).

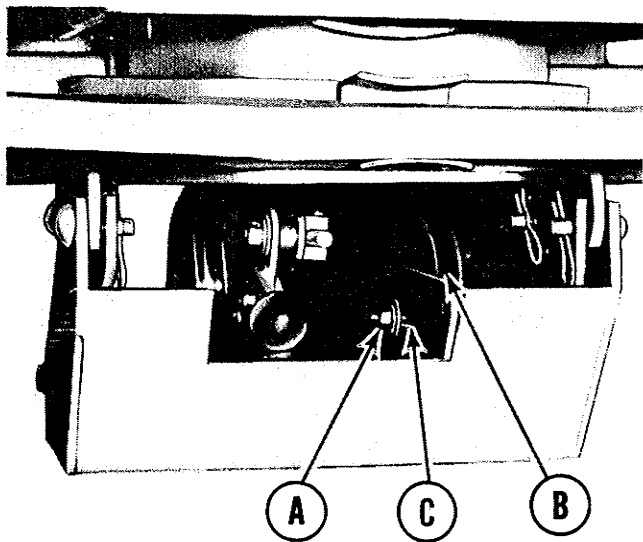


Figure 13. Idler pulley adjustment used to center mower drive belt between tractor frame and battery.

5. See figure 7. Check the distance at (A). There should be at least 1/4" clearance between the belt and the tractor battery and frame. If there is not, proceed as follows:

- a. Pull the belt tightening handle (figure 12, item B) forward to release belt tension
- b. See figure 13. Loosen nut (A) so idler pulley (B) can be moved forward or rearward in slot (C).
- c. Move idler pulley (B) forward or rearward as required to center the belt between the tractor frame and battery (figure 7, item A). Moving idler pulley (B) forward will of course move the left side of the belt closer to the battery and farther from the frame, but will move the right side of the belt away from the battery and closer to the frame.
- d. See figure 13. Tighten nut (A) securely to prevent idler pulley (B) from moving out of adjustment. Nut (A) should be torqued to 50 foot pounds.
- e. Repeat steps 1 through 4 to readjust belt tension.

MAINTENANCE

ORDERING REPLACEMENT PARTS

Replacement parts required for performing maintenance services or repair work should be purchased from your Simplicity dealer. When ordering parts be prepared to give him the mower identification number. If you have not already recorded these numbers on the inside front cover of this manual, we suggest you do so now for convenient future reference. **USE ONLY GENUINE SIMPLICITY REPLACEMENT PARTS.**

AFTER EACH USE

Inspect the mower and hitch assembly checking for loose bolts, missing spring clips and pins, etc. Also check the mower blades for sharpness and to insure they have not been bent or chipped from hitting a hard object. The underside of the mower should be checked and any buildup of grass clippings or dirt which may reduce the cutting capacity of the mower should be removed.

EVERY 25 HOURS

See figure 14. Each of the 3 grease fittings (A) should be given about 5 shots of general purpose automotive grease. This can easily be done without removing the mower from the tractor. The metal plugs (B) must be removed to grease the outside fittings. A small screwdriver can be used to pry them out. **DO NOT OVER LUBRICATE THE MOWER EXCESS GREASE AND OIL MAY GET ON THE BELTS AND CAUSE SLIPPAGE.**

A light coating of grease or SAE 30 weight oil should also be placed on the hitch assembly and mower mounting pins and all other mower pivot points to reduce wear.

OUT OF SERVICE PROTECTION (STORAGE)

1. Remove the mower from the tractor. See page 4.
2. Use water under pressure to thoroughly clean the mower to remove any buildup of grass clippings and dirt under the mower deck.
3. Cover any area where paint has been worn or chipped away with paint or a light coat of oil.
4. Lubricate the mower according to the Every 25 Hour Maintenance Service.
5. Store the mower in a dry place.

BLADE REPLACEMENT

Do not attempt to remove the blades until you have the correct size box, socket or open end wrenches for the blade mounting bolts. Place a wooden block between the mower blade and deck to prevent the blade from rotating until the capscrews are loosened. See figure 15. Remove the capscrews (A) to remove the blades for sharpening or replacement. **CAUTION: NEVER OPERATE THE MOWER WITHOUT THE STONE GUARD (B) IN PLACE. ALWAYS INSURE IT IS BOLTED SECURELY IN PLACE WHEN SERVICING THE MOWER.**

Note: DO NOT remove the arbors. Remove the blades from the arbors. To sharpen a blade yourself, clamp it in a vise and use a 10 inch file along the original bevel. File to a razor edge, at an angle of 30 degrees. To balance, insert a knife blade or small rod through the center hole to see if blade rests with both ends balancing evenly. File heavy side until even.

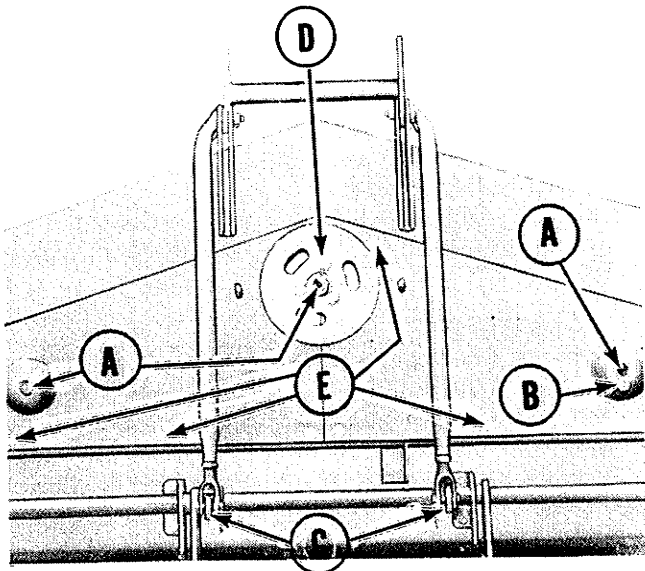


Figure 14. Mower deck viewed from above.

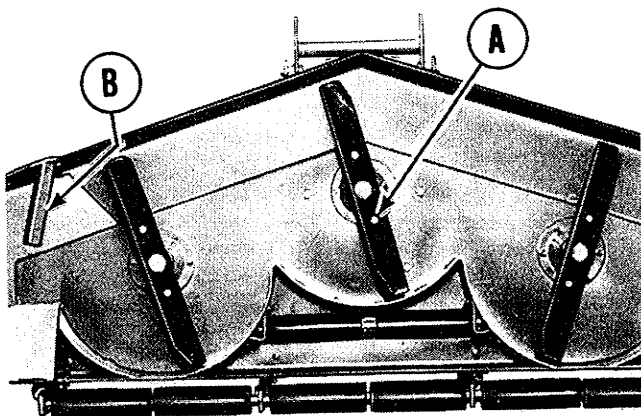


Figure 15. Underside of mower deck.

CAUTION: ALWAYS HANDLE BLADES WITH CARE TO AVOID INJURY.

Carefully clean the blade and arbor. Install the new or sharpened blade with the lift tabs toward the top. Install the two blade mounting capscrews and tighten them alternately two turns at a time to 45 ft. lbs. torque. Use a block or wedge to keep the blade from turning while tightening the bolts. Rotate the blades by hand slowly to see that the ends clear the housing all around and the tips are running true. If the mower is properly adjusted and in apparent good condition, but seems to require excess engine power, it may be that an arbor shaft or sleeve has been damaged by hitting an obstruction. Check the blade drive system. Tight bearings, a bent arbor shaft or spindle housing should be repaired or replaced by your Simplicity dealer.

BELT REPLACEMENT

The Power-Take-Off to mower drive belt can be easily replaced if necessary by following the installation instructions on page 2 of this manual.

The blade drive belt located under the mower deck is under spring tension and does not require any adjustment. Should this belt need replacement, remove the mower from the tractor and proceed as follows:

1. See figure 14. Remove the spring clips and pins at (C) and raise the lift arms out of the way.
2. Remove the three capscrews (D) and remove the mower drive pulley.
3. Remove the capscrews (E) and remove the belt covers from the mower deck.
4. See figure 16. Remove the broken or damaged belt.
5. Insure the idler pulley (A) is free to pivot so spring tension will be applied to the belt. Lubricate the idler pulley pivot at (B) with a few drops of SAE 30 engine oil.
6. Check all pulleys for rough edges or worn bearings.
7. Install a new Simplicity belt as shown in figure 16 and fasten the belt tension spring (C).
8. See figure 14. Replace the belt covers and capscrews (E).
9. Replace the mower drive pulley and the three capscrews (D). The capscrews should be tightened to 20 foot pounds torque.
10. Place the mower lift arms in position and install the pins and spring clips at (C).

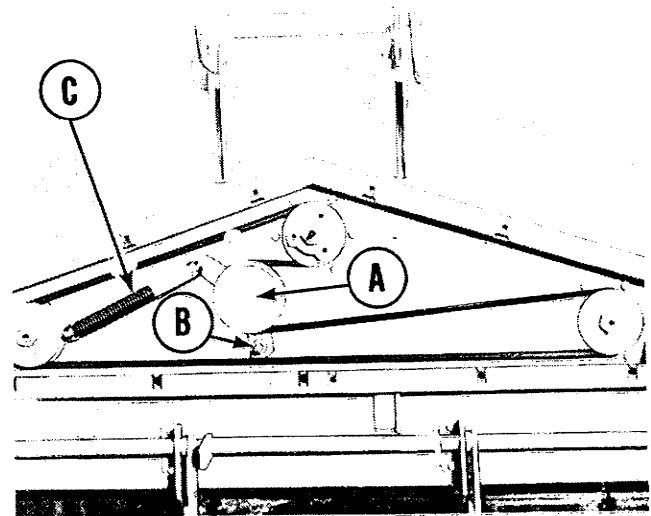
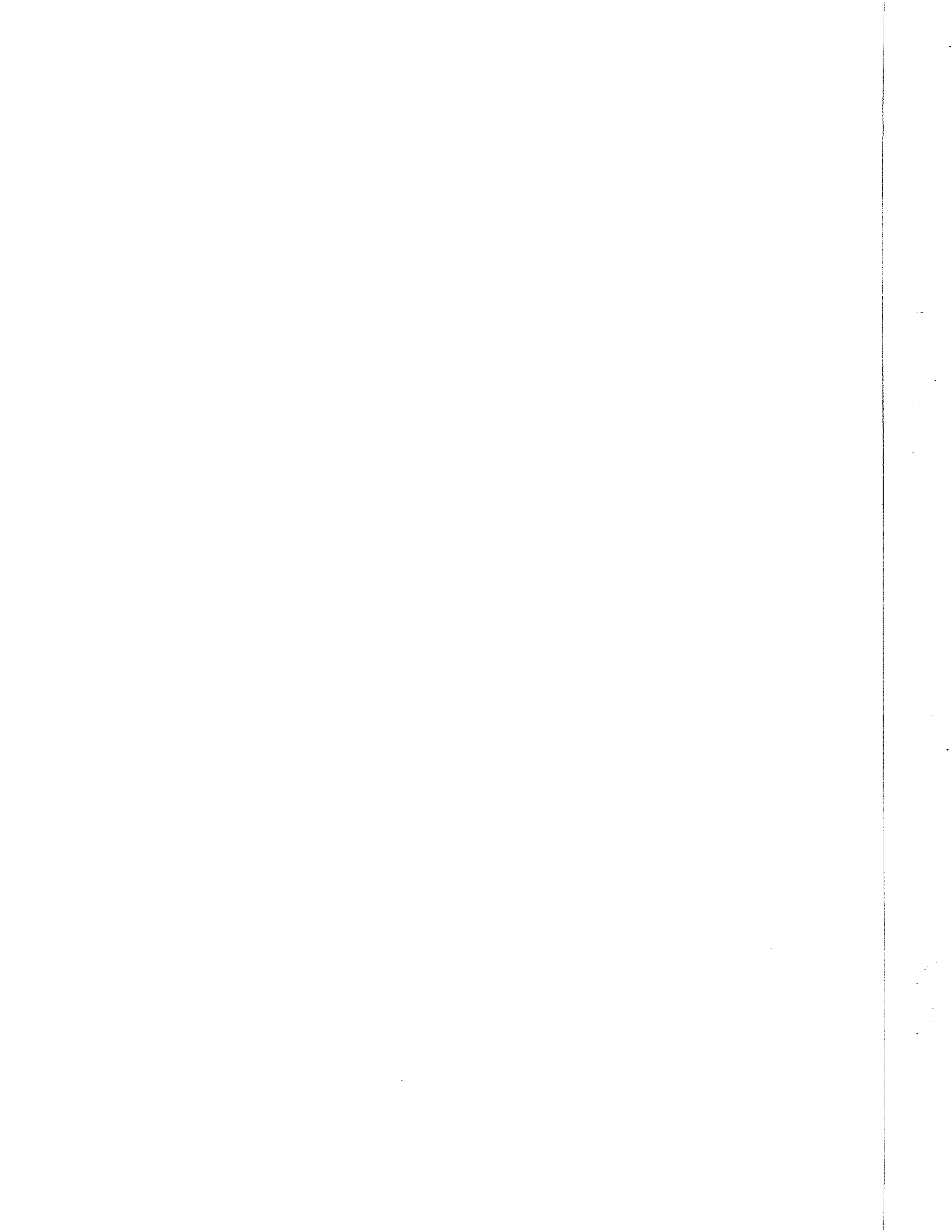


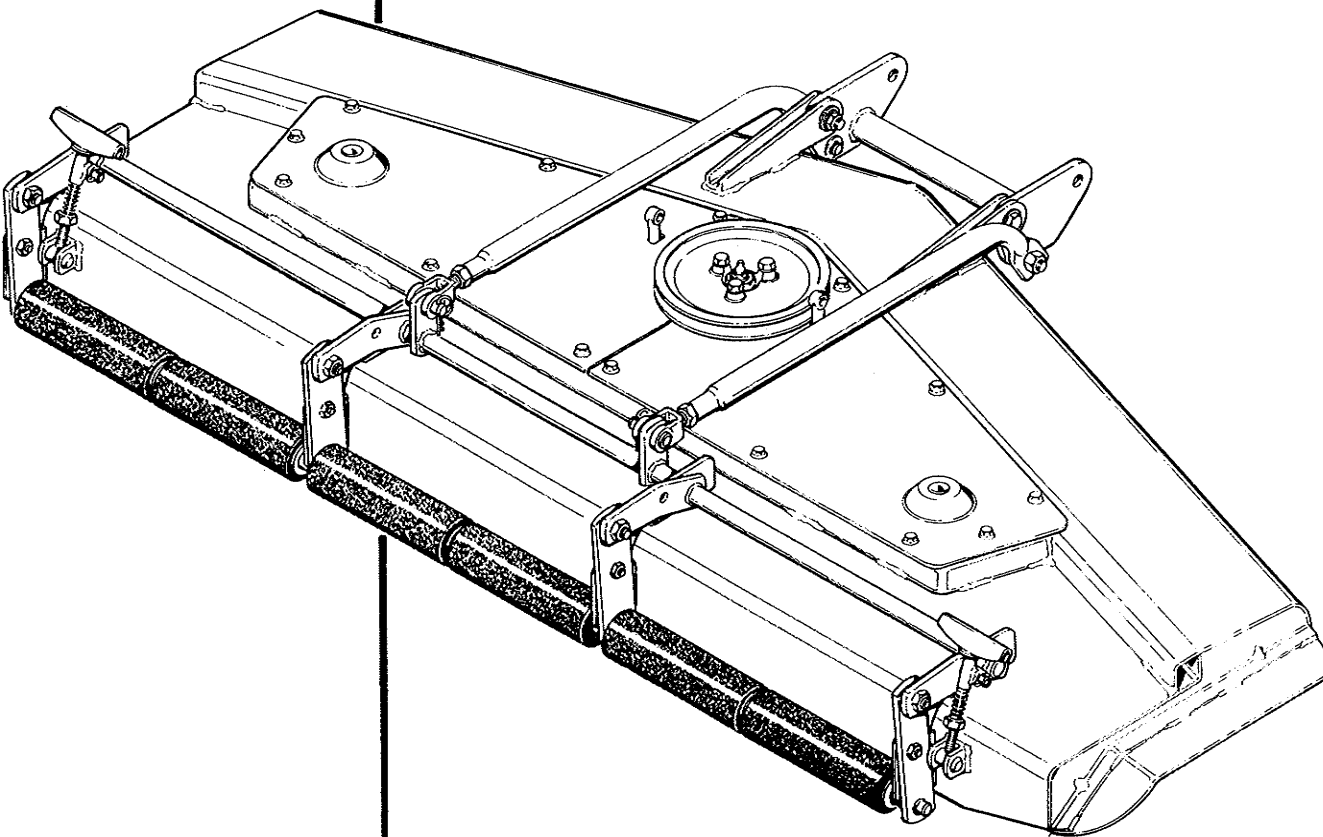
Figure 16. Top of mower deck shown with belt covers removed.

SPECIFICATIONS

Effective Cutting Width	60"
Mowing Capacity	Up to 4 acres/hour
Height of Cut	1-5/8" to 3"
Type of Adjustment	Twin self-locking stepless screws
Blade Arrangement	Three staggered overlapping 21" blades
Mower Input Drive	V-belt through electric clutch
Blade Drive	V-belt with spring-loaded idler
Spindle Bearings	Caged rolling contact, grease lubricated
Dimensions	
Width (across tractor)	71"
Length (front of hitch to rear of rollers)	38"
Height (ground to top of mower)	11-1/2"
Effective Clipping Channel (height above blade)	6"
Weight (approximate)	290 pounds

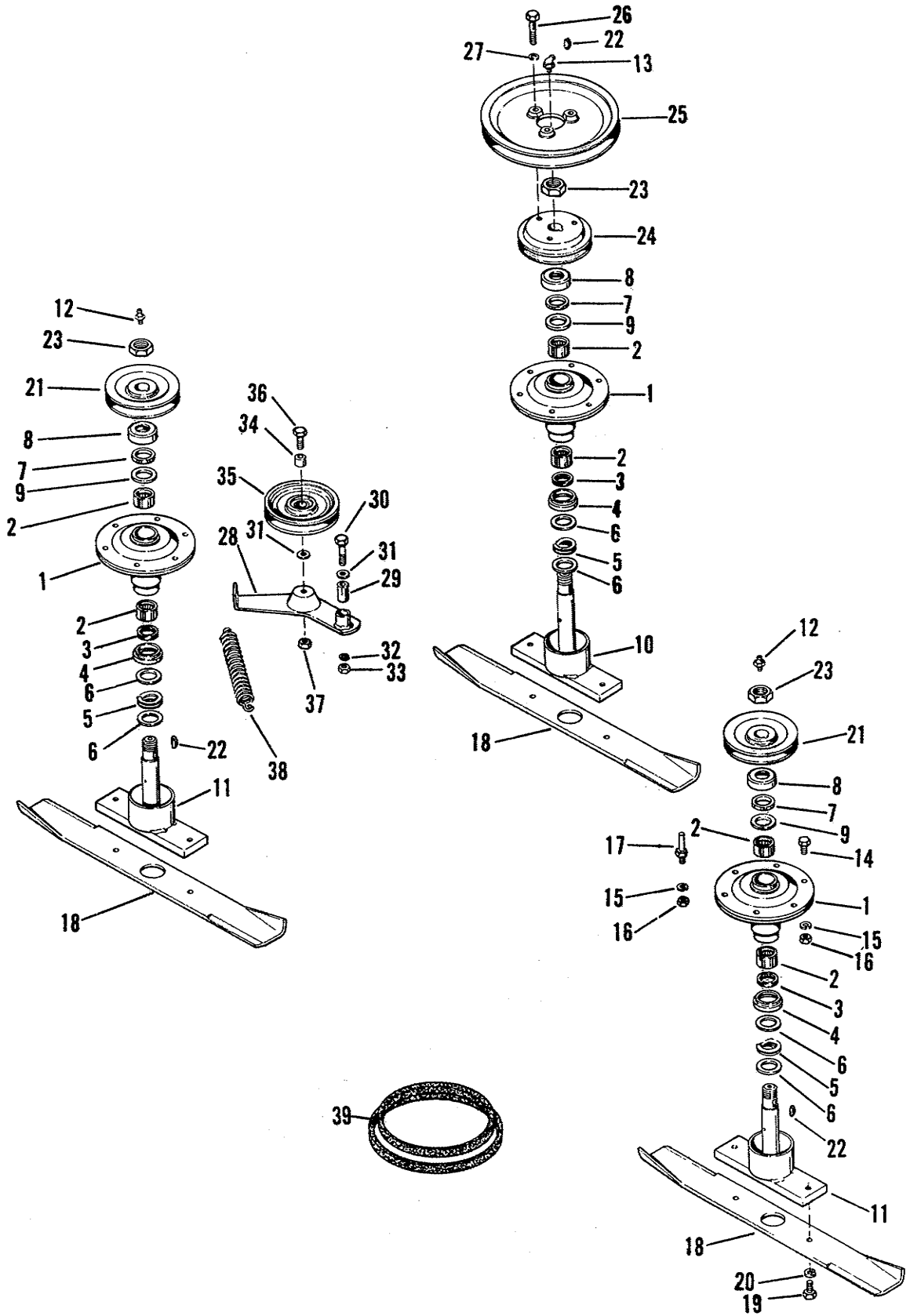


Simplicity



MFG. NO. 698 60" ROTARY MOWER
MFG. NO. 944 HITCH ASSEMBLY
PARTS CATALOG

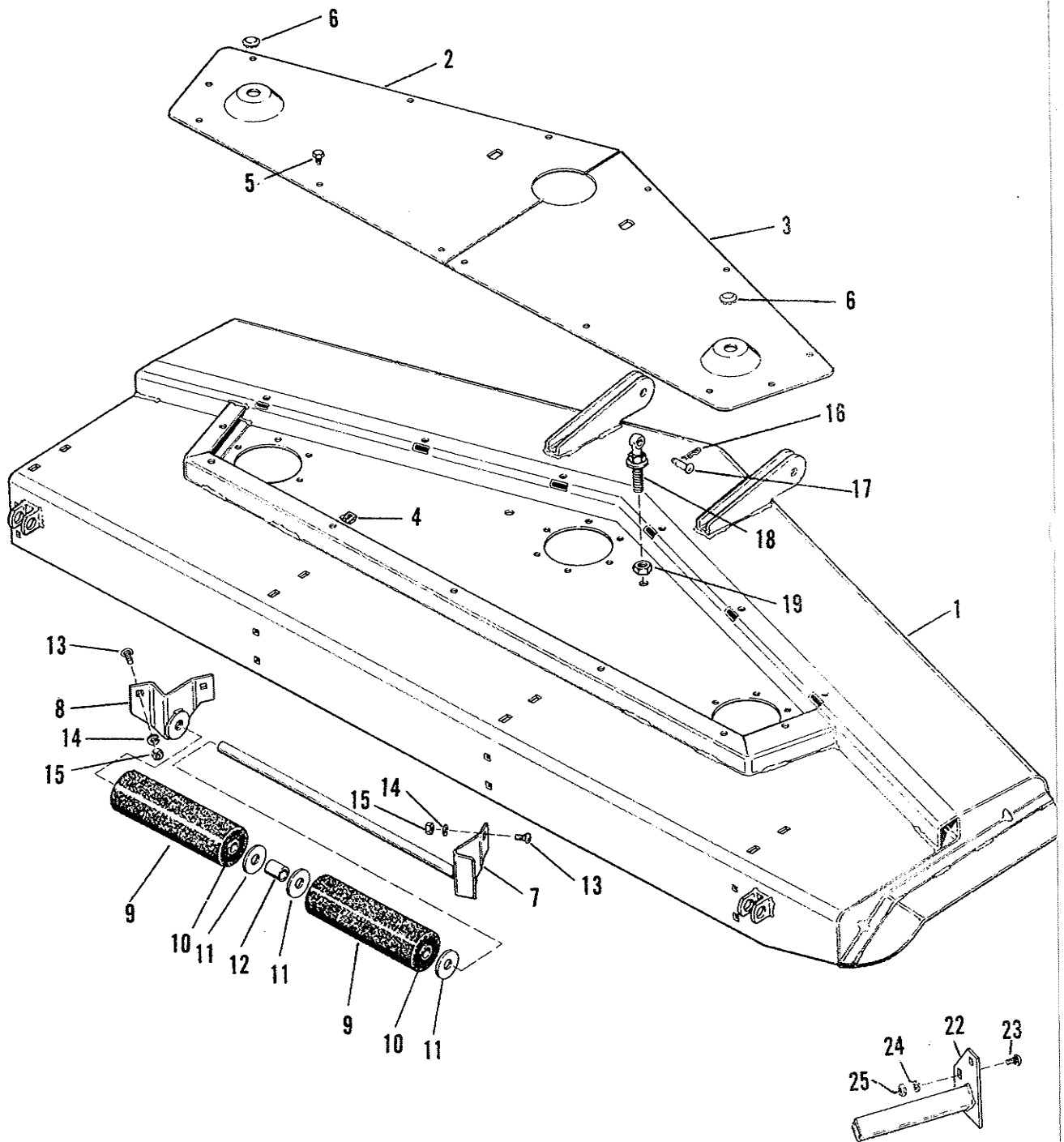
ARBORS & BLADES



ARBORS & BLADES

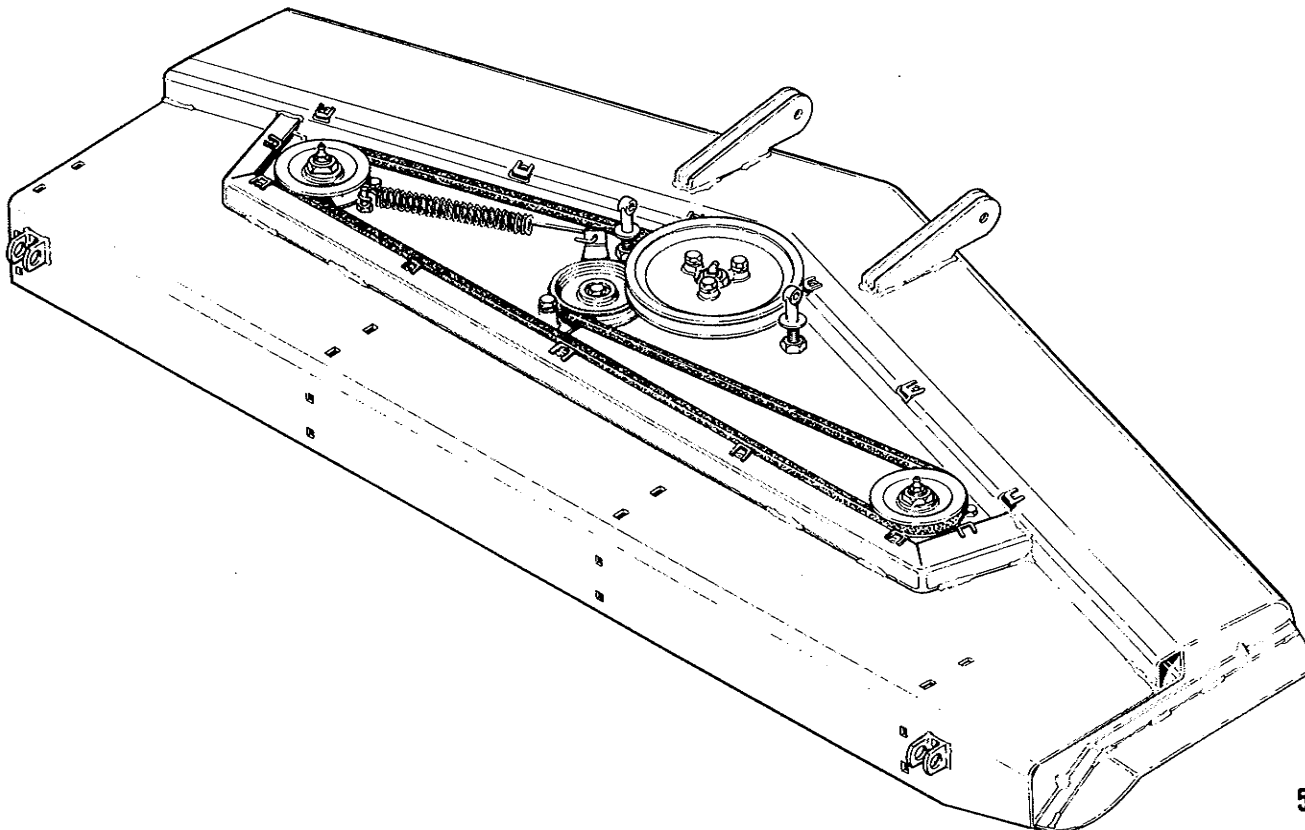
Ref. No.	Part No.	Qty. Req.	Description
1	172596	3	Arbor Tube Assembly
2	105195	6	Roller Bearing
3	172588	3	Seal
4	172587	3	Seal Cup
5	172584	3	Spring
6	172586	6	Washer
7	172590	3	Thrust Bearing
8	172585	3	Cup
9	172589	3	Thrust Washer
10	172576	1	Center Arbor Assembly
11	172577	2	Side Arbors Assembly
12	727002	2	Grease Fitting
13	727006	1	Grease Fitting
14	705005	17	Hex Capscrew, 3/8"-16 x 1" lg.
15	720002	18	Lock Washer, 3/8"
16	717003	18	Hex Nut, Full, 3/8"-16
17	156131	1	Stud
18	172741	3	21" Blade
19	715120	6	Hex Capscrew, 3/8"-16 x 1" lg.
20	720002	6	Lock Washer, 3/8"
21	172575	2	Pulley
22	725506	3	Key
23	717523	3	Hex Nut, Jam, Lock, 7/8"
24	175295	1	Pulley
25	175296	1	Pulley
26	705006	3	Hex Capscrew, 3/8"-16 x 2"
27	720002	3	Lock Washer, 3/8"
28	172601	1	Idler Lever Assembly
29	8171073	1	Inner Race
30	705010	1	Hex Capscrew, 3/8"-16 x 1-3/4" lg.
31	719002	3	Plain Washer, 5/16"
32	720002	1	Lock Washer, 3/8"
33	717003	1	Hex Nut, Full, 3/8"-16
34	170291	1	Spacer
35	172930	1	Idler Pulley
36	108497	1	Special Screw
37	717524	1	Hex Nut, Jam, Lock, 3/8"-16
38	108449	1	Spring
39	172444	1	"V" Belt

DECK & COVERS

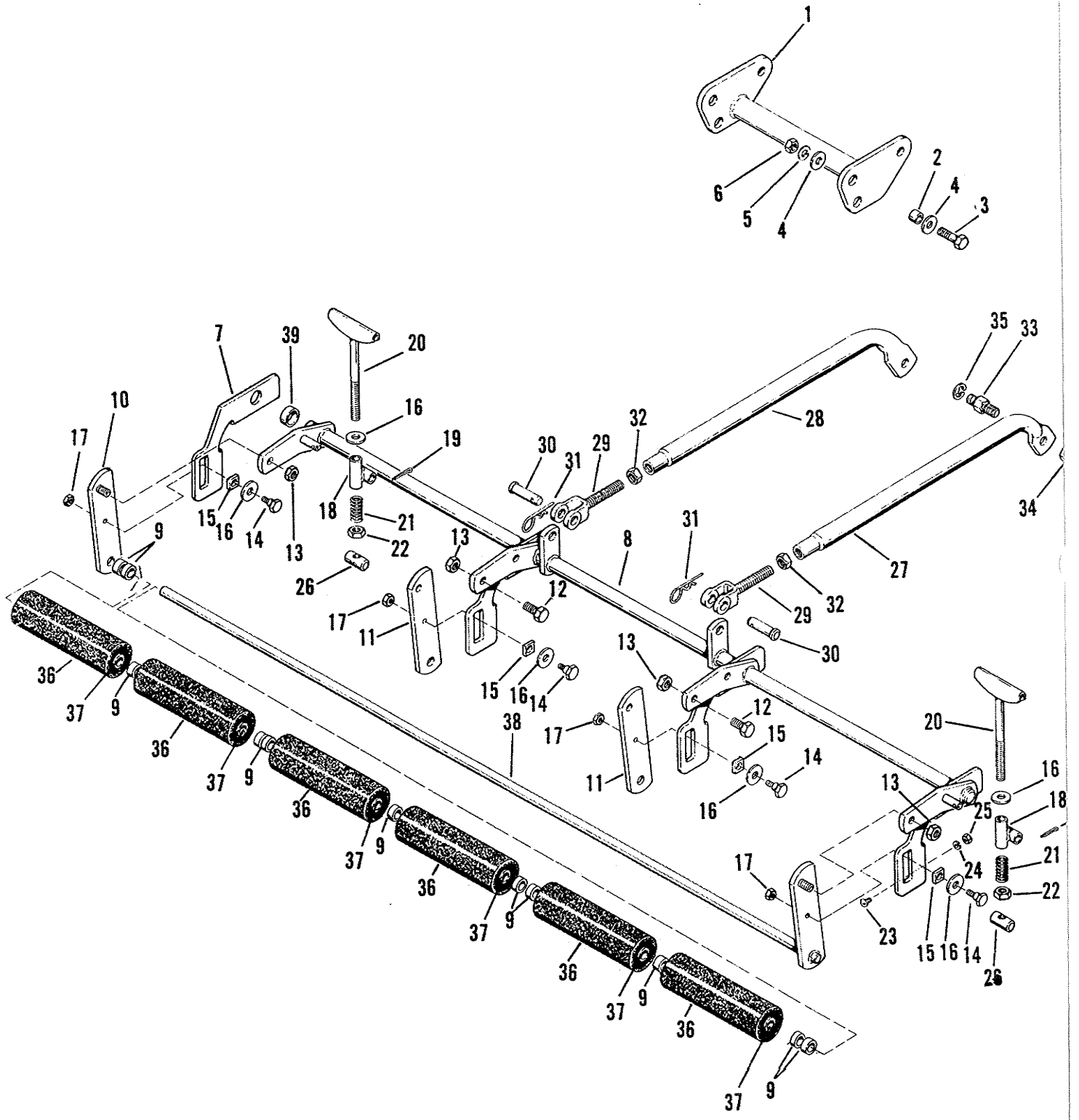


DECK & COVERS

Ref. No.	Part No.	Qty. Req.	Description
1	172560	1	Deck Assembly
2	172642	1	Cover Plate, L.H.
3	172968	1	Cover Plate, R.H.
4	718058	14	Clip Nut
5	172427	14	Self Tapping Screw, 5/16"-12
6	172971	2	Plug Button
7	172606	1	Bracket & Shaft Assy.
8	173270	1	Bracket Assembly
9	175729	2	Roller w/Bushing
10	108419	4	Bushing
11	116001	3	Washer
12	123025	1	Hub
13	702015	4	Carriage Bolt 5/16"-18 x 3/4" lg.
14	720001	4	Lock Washer, 5/16"
15	717001	4	Hex Nut, Full, 5/16"-18
16	106787	2	Spring Clip
17	108158	2	Pin
18	176887	2	Eyebolt Assembly
19	717519	2	Hex Nut, Jam. 7/16"-14
22	173551	2	Stone Guard Assembly
23	702002	2	Carriage Bolt, 3/8"-16 x 1" lg.
24	720002	2	Lock Washer, 3/8"
25	717003	2	Hex Nut, Full, 3/8"-16



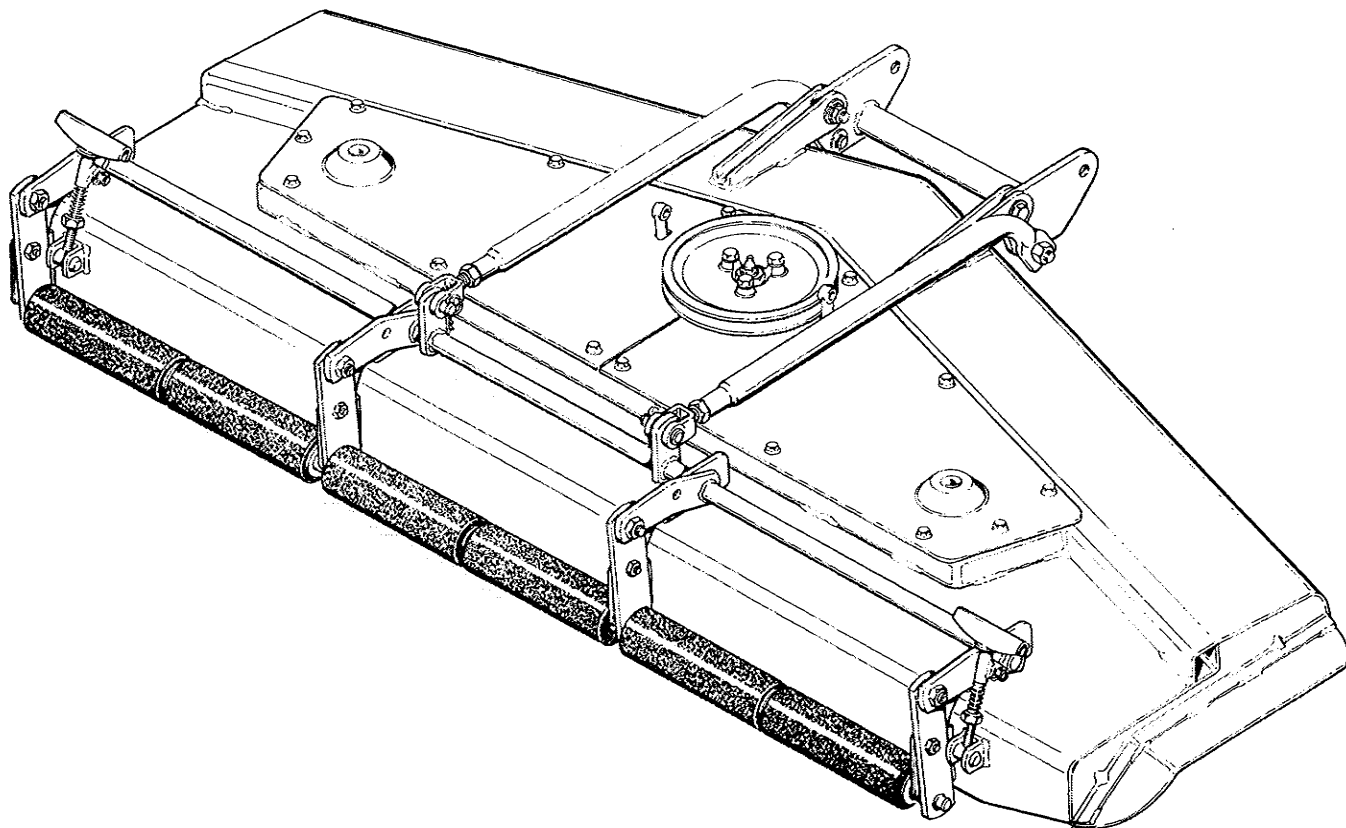
ROCKER ARMS & ROLLERS



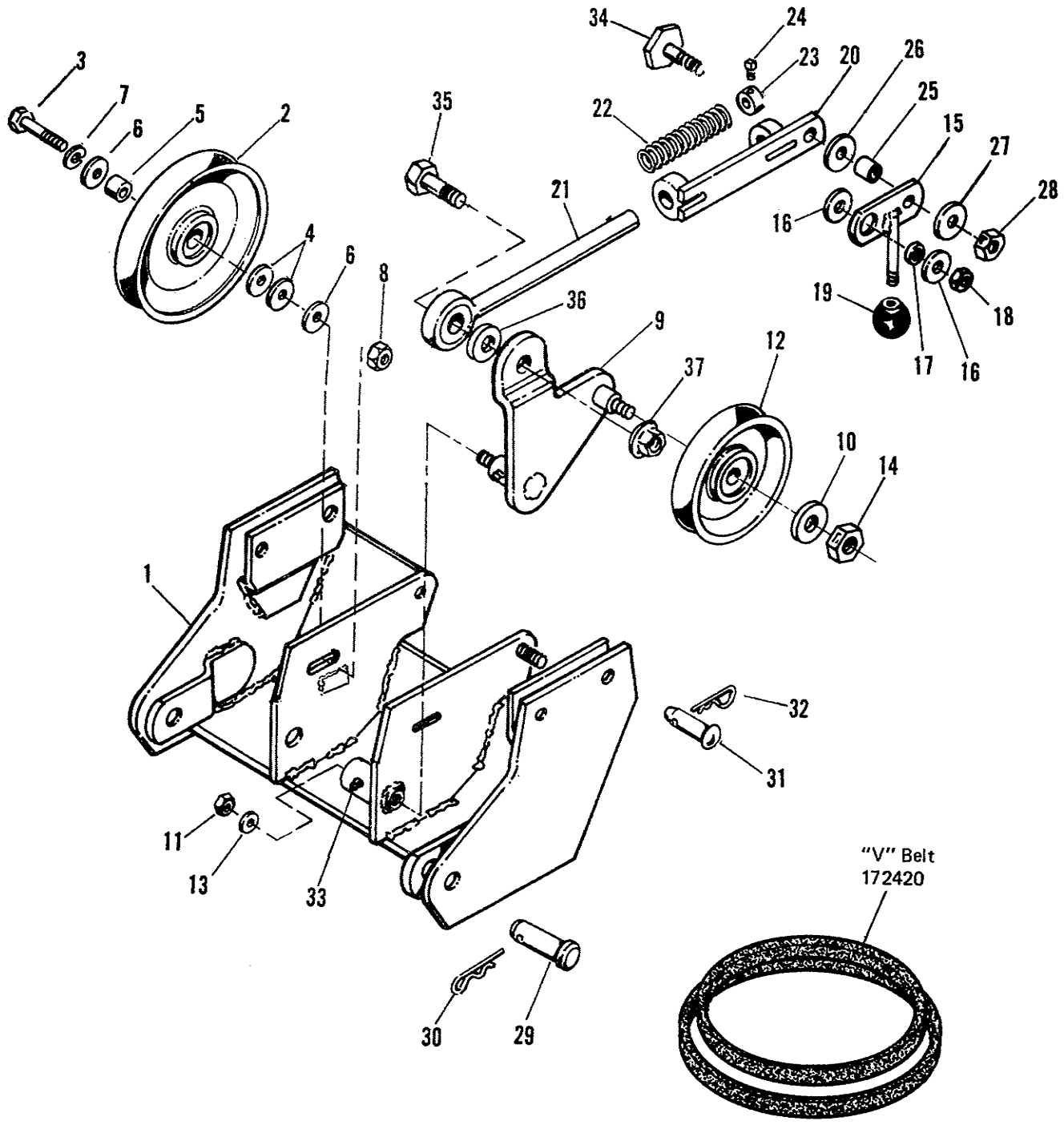
ROCKER ARMS & ROLLERS

Ref. No.	Part No.	Qty. Req.	Description
1	172571	1	Rocker Arm Assy. (Front)
2	172568	2	Spacer
3	705046	2	Hex Capscrew 1/2"-13 x 1-3/4" lg.
4	719003	4	Plain Washer, 1/2"
5	720004	2	Lock Washer, 1/2"
6	717006	2	Hex Nut, 1/2"-13
7	172598	1	Roller Bracket
8	175321	1	Rocker Arm Assy (Rear)
9	172914	13	Spacers (As Required)
10	172633	1	Roller Bar Assembly
11	172627	2	Roller Bar
12	705049	2	Hex Capscrew, 1/2"-13 x 1-1/4" lg.
13	717518	4	Hex Nut, 1/2"-13
14	172622	4	Shoulder Bolt
15	172567	4	Slides
16	719004	6	Plain Washer, 1/2"
17	717524	4	Hex Nut, Full, Lock, 3/8"-16
18	172621	2	Pivot Assembly
19	722011	2	Cotter Pin, 3/16" x 1" lg.

Ref. No.	Part No.	Qty. Req.	Description
20	172628	2	Adj. Screw Assembly
21	108360	2	Spring
22	717017	2	Hex Nut, Jam, 1/2"-13
23	702015	16	Carriage Bolt, 5/16"-18 x 3/4" lg.
24	720001	16	Lock Washer, 5/16"
25	717001	16	Hex Nut, Full, 5/16"-18
26	172565	2	Clevis Pin
27	175319	1	Bail R.H.
28	175320	1	Bail L.H.
29	172570	2	Yoke
30	112052	2	Yoke Pin
31	8161045	2	Spring Clip
32	717018	2	Hex Nut, Jam, 5/8"-11
33	172623	2	Shoulder Bolt
34	717031	2	Hex Nut, Jam, 5/8"-18
35	157286	2	Retaining Ring
36	175729	6	Roller w/Bushing
37	108419	12	Bushing
38	172635	1	Roller Shaft Assembly
39	172591	1	Spacer



MFG. NO. 944 HITCH ASSEMBLY



Ref. No.	Part No.	Qty. Req.	Description
1	177010	1	Support Assembly
2	171641	1	Pulley
3	715143	1	Hex Capscrew, 3/8-24 x 1-3/4"
4	719002	3	Plain Washer, 5/16
5	170291	1	Spacer
6	153052	2	Washer
7	720002	1	Lock Washer, 3/8
8	174435	1	Special Nut, Flange
9	177014	1	Lever Assembly
10	719002	1	Plain Washer, 5/16
11	717510	1	Hex Nut Lock, 3/8-16
12	171640	1	Pulley
13	154325	1	Washer
14	717521	1	Hex Nut Centerlock, 1/2-13
15	171624	1	Lever Assembly
16	719001	2	Plain Washer, 3/8
17	154177	1	Spacer
18	717524	1	Jam Nut, 3/8-16
19	122005	1	Knob
20	177004	1	Rod Guide Assembly
21	177204	1	Eye Bolt
22	163103	1	Spring
23	105201	1	Set Collar
24	713001	1	Set Screw, 1/4-20 x 3/8
25	153081	1	Spacer
26	159134	1	Special Washer
27	719001	1	Plain Washer, 3/8
28	717510	1	Hex Nut, Full Lock, 3/8-16
29	112052	2	Yoke Pin
30	176012	2	Safety Spring Clip
31	102004	4	Pivot Pin
32	106788	4	Hair Pin Clip
33	727013	1	Grease Fitting
34	108418	1	Screw
35	108412	1	Shoulder Bolt
36	719004	1	Washer Plain, 1/2
37	718035	1	Nut Flange, 3/8-16





CAUTION

1. Keep all shields in place.
2. Before leaving operator's position:
Shift transmission to neutral.
Set parking brake.
Disengage attachment clutch.
Shut off engine.
Remove ignition key.
3. Wait for all movement to stop
before servicing machine.
4. Keep people and pets a safe
distance away from machine.

