

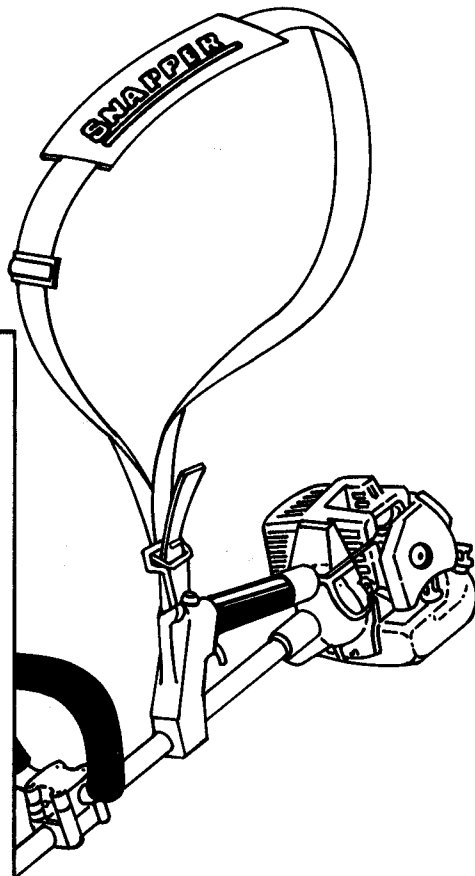
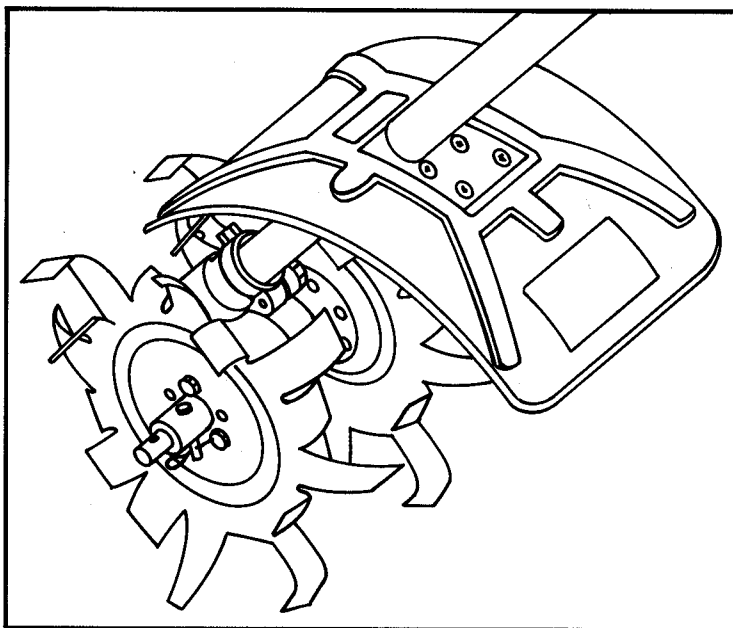
## #6-8171 CULTIVATOR KIT for

# SNAPPER®

## MODEL SST2111, 211SST & 210SST TRIMMERS

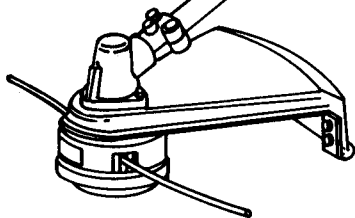
### INTRODUCTION

The *SNAPPER* CULTIVATOR KIT converts *SNAPPER* MODEL SST2111, 211SST & 210SST TRIMMERS to Cultivators. These units are designed to be used on Tilled Soil. They are not designed to be used on untilled ground — serious gearbox or drive shaft damage could result.



**KNOW AND OBSERVE THE IMPORTANT SAFETY INSTRUCTIONS WHEN OPERATING THE TRIMMER/CULTIVATOR. SEE IMPORTANT SAFETY INSTRUCTIONS IN YOUR OPERATOR'S MANUAL!**

**NOTE:** Always wear Safety Goggles and Protective Clothing – Long Pants and Heavy Boots, when operating the Trimmer/Cultivator. Keep Hands & Feet Away from Moving Tines.



**SNAPPER POWER EQUIPMENT**  
McDonough, GA., 30253 U.S.A.

**E/I**

**FUQUA**  
INDUSTRIES  
Company

## ASSEMBLING THE CULTIVATOR ATTACHMENT

1. Read these instructions completely. Unpack and inspect all items. Compare them to the Parts List.
2. Save the box to store the Trimming Head or the Cultivator Head when not installed.
3. Disconnect the Spark Plug Wire. It is recommended that gloves be worn when handling tines during assembly of the Cultivator.
4. Remove the Trimmer Head from the Drive Shaft. Using a Phillips Screw Driver,  $\frac{5}{16}$ " Nut Driver or Wrench. Loosen the two outer screws (B). Remove the center screw (A) and slide the Trimmer Head off of the Drive Shaft.  
**IMPORTANT:** Reinstall the Center Screw (A) in the Trimmer Head.
5. Slide the Shield Assembly (#13) onto the Main Tube Assembly shaft with *SNAPPER* logo pointing toward operator.
6. Attach the Shield Bracket (#5) & Bracket Clamp (#6) to the Main Tube using screws (#7).
7. Attach the Shield Assembly to the Shield Bracket using screws, nuts & lock washers (#8, 9 & 10). The Shield Bracket should be mounted approximately  $3\frac{1}{2}$ " from the end of the Main Tube.
8. Remove the center Screw (1A) (use a Phillips Screw Driver, 10mm Nut Driver or Wrench) from the Cultivator Gear Housing.
9. If your Trimmer already has a secondary hole slot, slide the Gear Housing Assembly onto the Main Tube, engaging the square shanked Drive Shaft with the Gear Housing. Align the hole in Main Tube with Bolt (1A) hole in the housing. Reinstall Bolt (1A) and tighten. Tighten the Cultivator Gear Housing Bolt (1B) using a 10mm Nut Driver or Wrench.
10. If your Trimmer does not have a secondary hole near the slot, slide the Gear Housing Assembly onto the Main Tube and align the Gear Housing Assembly so that the two output shafts are horizontal to the ground. Reinstall and "slightly" tighten screw (A) to mark the Main Tube. Remove the housing and drill a  $\frac{3}{16}$ " hole in the Main Tube at the mark. Remove all shavings from inside the tube, then reinstall the Gear Housing Assembly as stated in Step 10.  
**IMPORTANT:** Do not drill into the Drive Shaft.
11. Remove the Clevis Pin (#3) and Hairpin Cotter (#11). With the directional arrow on the tine positioned in a forward rotational position, slide the inside Tines (#4) into position on the Tine Hub (#2). Secure the tines to the Tine Hub using the Screws (#12). Reinstall the Clevis Pin & Hairpin Cotter.
12. Repeat Steps 10 & 11 on the other side.
13. Check to be sure that ALL Screws are tight. Reconnect the Spark Plug Wire.
14. Refer to the Trimmer Operator's Manual for Starting Instructions.

**KNOW AND OBSERVE THE IMPORTANT SAFETY INSTRUCTIONS WHEN OPERATING THE TRIMMER/CULTIVATOR. SEE IMPORTANT SAFETY INSTRUCTIONS IN YOUR OPERATOR'S MANUAL!**

**NOTE:** Always wear Safety Goggles and Protective Clothing – Long Pants and Heavy Boots, when operating the Trimmer/Cultivator. Keep Hands & Feet Away from Moving Tines.

**NOTE:** Always Disconnect Spark Plug Wire BEFORE Inspecting, Servicing or Repairing the Cultivator.

### OPERATING TIPS:

For light tilling and weeding, allow the Cultivator to move forward across the soil.

For deeper cultivation, pull back slowly on the Cultivator while it is engaged.

### SERVICE TIPS:

1. Check to make sure that all screws on the Cultivator are tight after each use.
2. See Safety Instruction & Operator's Manual for your *SNAPPER* Model Trimmer, for specific details regarding the Engine and Drive Shaft.

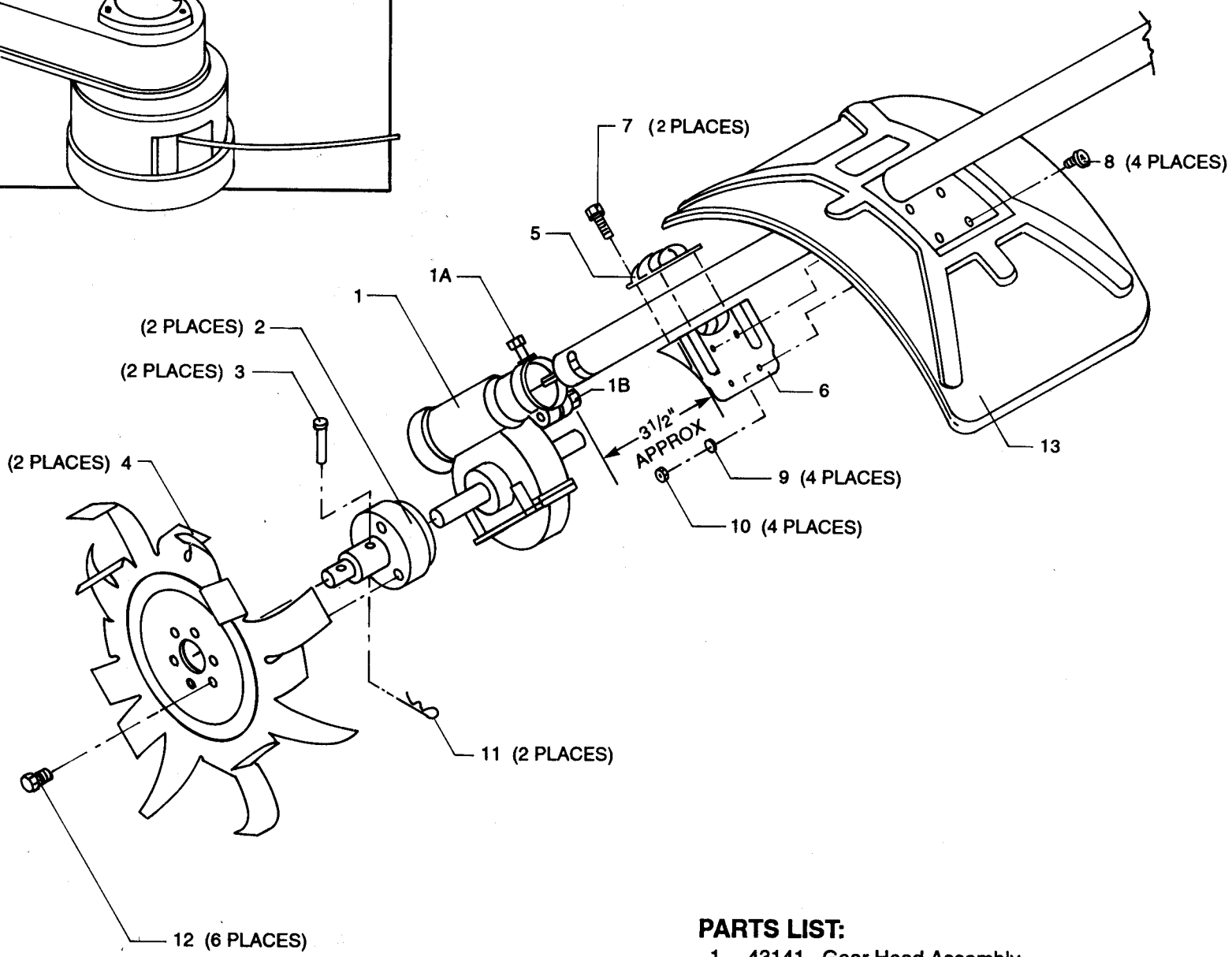
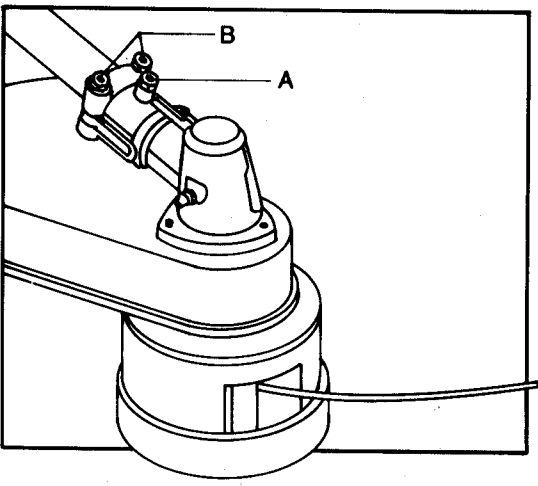
### CAUTION:

1. Be sure that the Shield Assembly is properly mounted and secured.
2. If Cultivator stalls because it is jammed with grass or debris, STOP ENGINE and disconnect the Spark Plug Wire before removing grass or debris.
3. With the clutch engaged and the tines rotating, resonance can be generated at low speed. Operation under this condition may wear the clutch and cause grass or debris to become jammed in the tines. Do Not Lug the engine.

### LUBRICATION:

Gear Head (#1)—Service every 20 hours.

**CAUTION:** The Gear Head gets hot during operation — let it cool before servicing! Disconnect the Spark Plug Wire. Remove the Cover Plate (on the bottom of the Gear Head Housing) and fill the housing with lithium base #2 multi-purpose grease. Secure the cover plate to the Gear Head and reconnect the Spark Plug.



**TOOLS LIST:**

- Phillips Screw Driver
- 8mm or 5/16" Nut Driver or Wrench
- 10mm Nut Driver or Wrench
- 3/16" High Speed Drill Bit
- Drill Motor

**PARTS LIST:**

- 1. 43141 Gear Head Assembly
- 2. 16217 Tine Hubs (2)
- 3. 43144 M6 x 28 Clevis Pins (2)
- 4. 32878 Cultivator Tines (2)
- 5. 43143 Bracket Clamp
- 6. 43142 Shield Bracket
- 7. 43145 M5 x 18mm Hex Screw W/SLW (2)
- 8. 43146 M5 x .08 14mm Large Recess Pan Head Screws W/Flat Washers (4)
- 9. 43147 M5 Split Lock Washers (4)
- 10. 43148 M5 Hex Nuts (4)
- 11. 12431 1/4" Hairpin Cotters (2)
- 12. 91129 1/4"—20 x 1/2" Nylok Screw (6)
- 13. 52140 Shield Assembly

**SNAPPER POWER EQUIPMENT**  
McDonough, GA., 30253 U.S.A.

