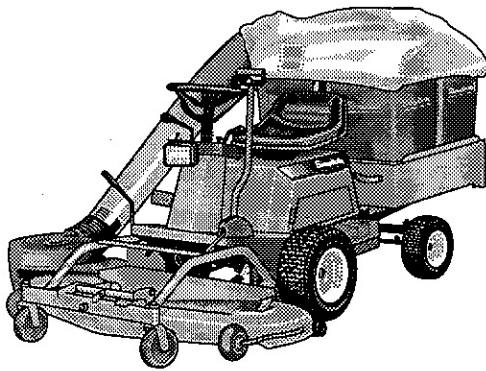


FC & SUNRUNNER SERIES

Attachments
& Accessories



PARTS MANUAL

Product Identification:

When ordering parts, keep your products serial number and manufacturer's number in mind. Variations may occur in a part between early and later model products, causing the product serial number to be listed in the parts description whenever these variations occur.

Record your I.D. numbers here for quick, future reference.

Product Mfg. No. _____ S/N _____ Mower Mfg. No. _____ S/N _____

Attention:

Standard torques appear in a chart at the end of the manual, while important individual torques are given on specific parts drawings.

CRITICAL and MAJOR notations point out important facts or instructions which relate to personal safety and proper machine operation. Any CRITICAL notation **C** which may appear in this book, pinpoints characteristics which, if not properly followed, can create a safety hazard. Any MAJOR notation **M** which may appear in this book, marks characteristics which, if not properly followed, may result in operating failure, shortened product life, or greatly reduced quality of the unit.

For your convenience, assembly notes are included in parts drawings to assist in repair and assembly of unit.

NOTE: Specifications may change without notice.

SIMPLICITY PRODUCTS FOR THE PROPER CARE OF EQUIPMENT
These genuine *Simplicity* products will help the owner extend the life of his equipment.

OILS - SPECIFICALLY BLENDED OF HIGH QUALITY BASE OILS & ADDITIVES.

Special Worm Gear (Roticut) Oil for use in all tillers and snowthrowers with worm gear auger drive. Required for protection of brass gears and mating parts. **Case of 12 Quarts, Part #1685100, Individual Quarts 118065.**

Multi-Purpose Hydraulic/Transmission Oil for use in most hydraulic applications, and hydrostatic and gear transmissions. Specific *Simplicity* applications: All hydrostatic transmissions, all bevel gear cases, all Broadmoor, Landlord, Sovereign, 4000, 6000, 7000 transmissions (except Peerless Gear Transmissions). (Not used in SunStar tractor transmission.) **Case of 12 Quarts, Part #1685516, 2½ Gallon Container, Part #1685539.**

2-Cycle Engine Oil, a premium lubricant for all 2-cycle air-cooled engines. **Case of 12 Part #1685517.**

SAE 5W 30 SF/CD Cold Weather Engine Oil for use in all four cycle and diesel engines at 30° temp. and under. **Case of 12 Quarts, Part # 1685576.**

SAE 15W40 SF/CD Engine Oil for gas and diesel engines; warm weather; see engine manufacturer recommendations. **Case of 12 Quarts, Part #1685554.**

Grease Gun Kit has 12" flexible hose to get into tight spots with ease. Kit contains: gun and 1-8 oz. tube of grease, **Part #1685510.** For replacement tube, order **Part # 103077.**

Pneumatic Tire Seal, seals all leaks including bead leaks and punctures up to 3/16 inch diameters. Prevents flats for tread life of tire. Available in following amounts.

Case of 12 - 11 Oz. Tubes 1685537
Case of 24 - 11 Oz. Tubes 1685525
5 Gallon Pail 1685527

Touch-Up Paint keeps equipment in showroom condition.

Spray Cans	Quarts	Daubers 12/Ctn.
*Simplicity Orange - 103262 (12 cans/1685179)	1685037	1685520 - Mixed (6 Simp. Orange, 6 White)
**Classic Orange - 1685558 (12 cans/1685559)	1685560	1685562 - Mixed (6 Classic Orange, 6-White)
White 103049 (12 cans/1685178)	1685032	1685562 - Mixed (6-Classic Orange, 6-White) 1685520 - Mixed (6-Simp. Orange, 6-White)
Black - 1685551 (12 Cans/1685552)	N.A.	N.A.

*For 1977 thru early 1986 products.
**For products produced after 12/1/85.

Simplicity Designer Seat Covers are double stitched, easy care vinyl. Keeps new seats new, makes worn seats look new.

- Small Cover for 4000, 5000,
& 6100 Tractors 1685540
- Large Cover for 6200, 7000 &
9000 Tractors 1685541
- SunStar Seat Cover 1685577

Extend Equipment Life - Use Only Genuine *Simplicity* Parts

Table of Contents

Mfg. No.	Description	Page
1685535	HOUR METER KIT	36
1691243*	STEEL TILT-HOPPER	34
1691244*	HI-SIDE KIT	32
	Stakes, Caps, Wood Sides, L-Brackets	
1691245*	TURBO CART COLLECTOR	
	Cover Group	22
	Cart Cover, Frame, Supports, Strap	
	Tube & Belt Cover Group	24
	Elbow, Tube, Hose, Belt Cover Assy.	
1691256*	WOODSIDE TRANSPORTER	36
	Channels, Woodsides, Latches	
1691260*	TURBO BLOWER SYSTEM (42" Mowers Only)	14
	Pan & Housing Assys., Plate Assy., Brackets, Pulley Assys., Belt, Baffle	
1691282*	DELUXE TWIN CATCHER (36" Mowers Only)	
	Cover, Bag & Support Group	2
	Cover Assy., Hoop, Bags, Supports, Brackets, Strap & Hooks	
	Tube & Blade Group	4
	Tube, Adaptor, Elbow, Baffles, Blades	
1691286*	SURREY	30
	Cover, Tubes, Brackets	
1691291*	HEADLIGHT KIT	38
1691373*	TURBO BLOWER SYSTEM (36" Mowers Only)	18
	Housing Assy., Fan Assy., Plate Assy., Belt Stop, Idler Pulley, Idler Arm Assy.	
1691530	HORN KIT	38
1691572	TURBO TWIN CATCHER (36" or 42" Mowers)	
	Cover, Bag & Support Group	2
	Cover Assy., Hoop, Bags, Supports, Brackets, Strap & Hooks	
	Tube & Belt Cover Group	6
	Elbow, Belt Cover Assy., Clamp, Hose, Tube	
1691792	TURBO TWIN CATCHER	
	Cover Group	8
	Tube Group	10
	Hitch Group	12
1691808	QUAD BAGGER & CART	28
1691810**	TURBO BLOWER SYSTEM (42" & 48" Mowers Only)	14
1691813**	TURBO QUAD BAGGER	26
1691998	TURBO BLOWER SYSTEM (42" & 48" Mowers Only)	14
1692100	QUAD BAGGER & CART	28

NOTE: Service parts are not available for the following manufacturers numbers. Order the following products as wholegoods.

Mfg. No.	Description	Mfg. No.	Description
1600027**	HUBCAPS (FC)	1691293*	REAR WEIGHT
1690507*	HUBCAPS (SunRunner)	1691517*	†ADAPTER FOR DETHATCHER
1690819	†DETHATCHER (42" Mowers Only)	1691785**	†ADAPTER FOR DETHATCHER
1691289*	DELUXE SEAT		

†For service parts of Dethatcher or Adapter, contact:

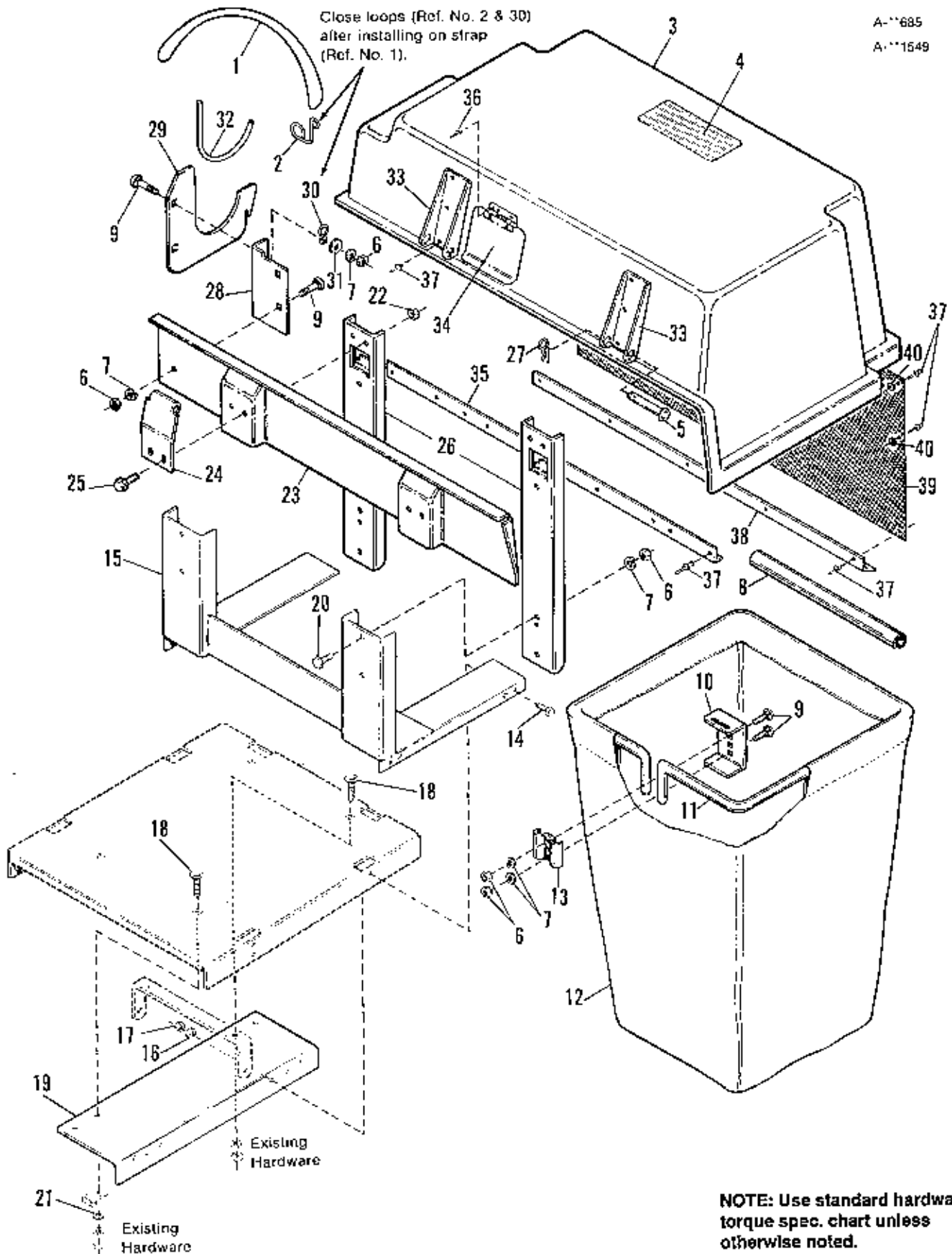
Brinly-Hardy Co.
P.O. Box 1116
Louisville, KY 40201
502-585-3351

** FC Series Application Only

* SunRunner Series Application Only

A-685

A-1549



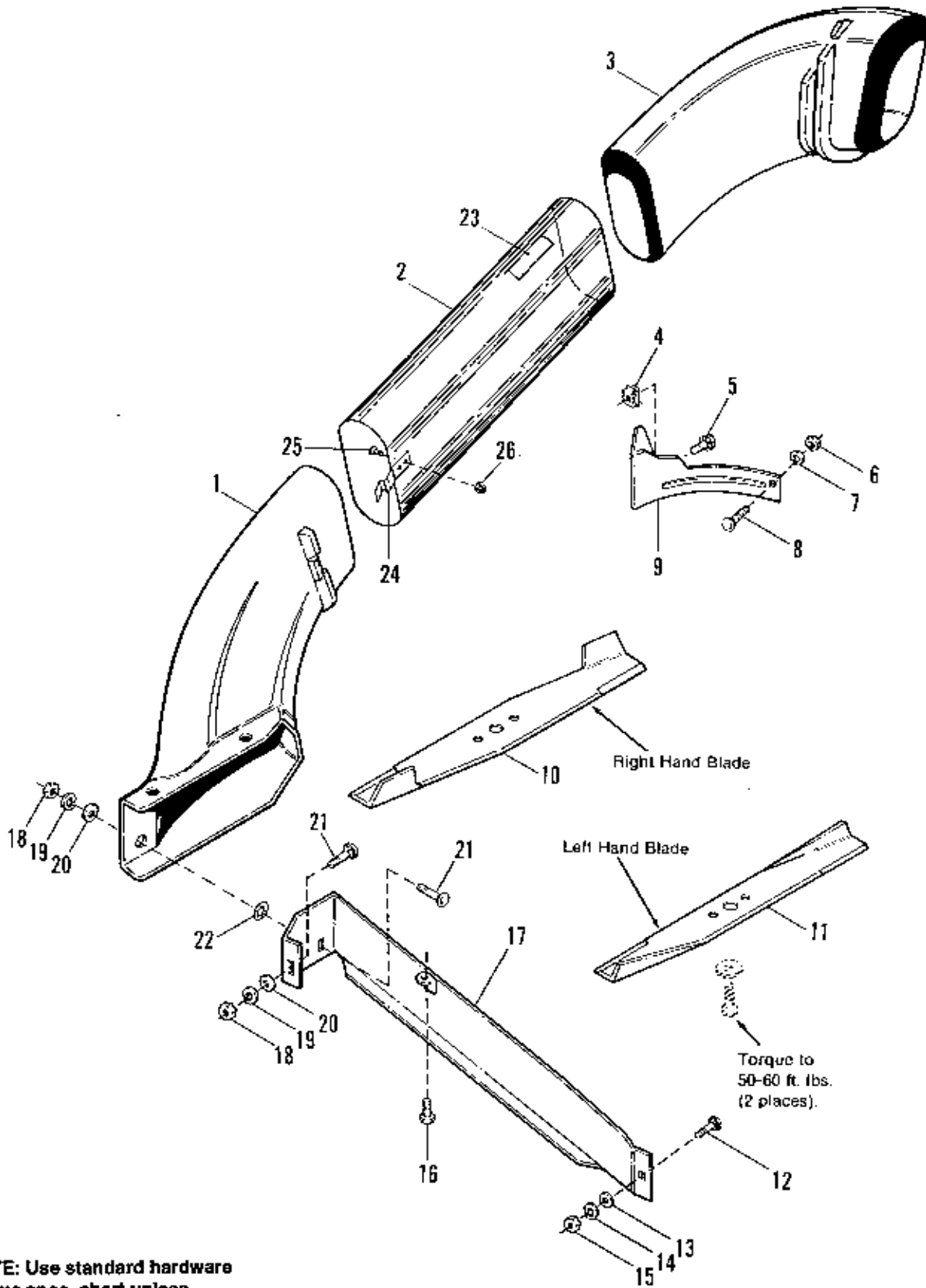
Turbo & Deluxe Twin Catchers - Cover, Bag & Support Group

Ref. No.	Part No.	Qty.	Description
1	1665872	1	STRAP
2	1672688	1	HOOK, Strap
3	1675293	1	COVER ASSY.
4	1676923	1	DECAL, Warning
5	1672344	2	PIN
6	1917372	12	NUT, Hex, 5/16-18
7	1917356	12	LOCKWASHER, 5/16
8	1675707	2	TUBE
9	1931334	8	BOLT, Carriage, 5/16-18 x 7/8
10	1672333	2	HANGER
11	1673602	2	HOOP, Bag
12	1672346	2	BAG, Grass
13	1672023	2	CLAMP
14	1923341	4	CAPSCREW, Hex, 1/4-20 x 3/4
15	1700935	1	BRACKET ASSY.
16	1916964	4	LOCKWASHER, 1/4
17	1916622	4	NUT, Hex, 1/4-20
18	1931335	4	BOLT, Carriage, 5/16-18 x 1
19	1700933	2	ANGLE, Support
20	1923325	4	CAPSCREW, Hex, 5/16-18 x 7/8
21	1919381	2	WASHER, 5/16
22	1923362	4	NUT, Hex, Lock, 5/16-18
23	1672341	1	PLATE, Support, Cover
24	1672345	2	PLATE, Hinge
25	1930591	4	SCREW, Hex, Flange Whizlock, 5/16-18 x 3/4
26	1672329	2	BRACE, Upper
27	1960074	2	CLIP, Hairpin
28	1672325	1	MOUNT, Saddle Bracket
29	1672335	1	BRACKET, Saddle
30	1672689	1	"S" HOOK
31	1919326	1	WASHER, Plain
32	1673874	1	TRIM
33	1672324	2	BRACKET, Hinge
34	1673201	1	DOOR & HINGE, Inspection
35	1672323	1	BRACKET, Cover, Front
36	1673450	2	RIVET, Pop
37	1673320	32	RIVET, Pop
38	1672322	1	BRACKET, Cover, Rear
39	1672340	1	SCREEN
40	1910531	4	WASHER, Rivet

SAFETY DECAL



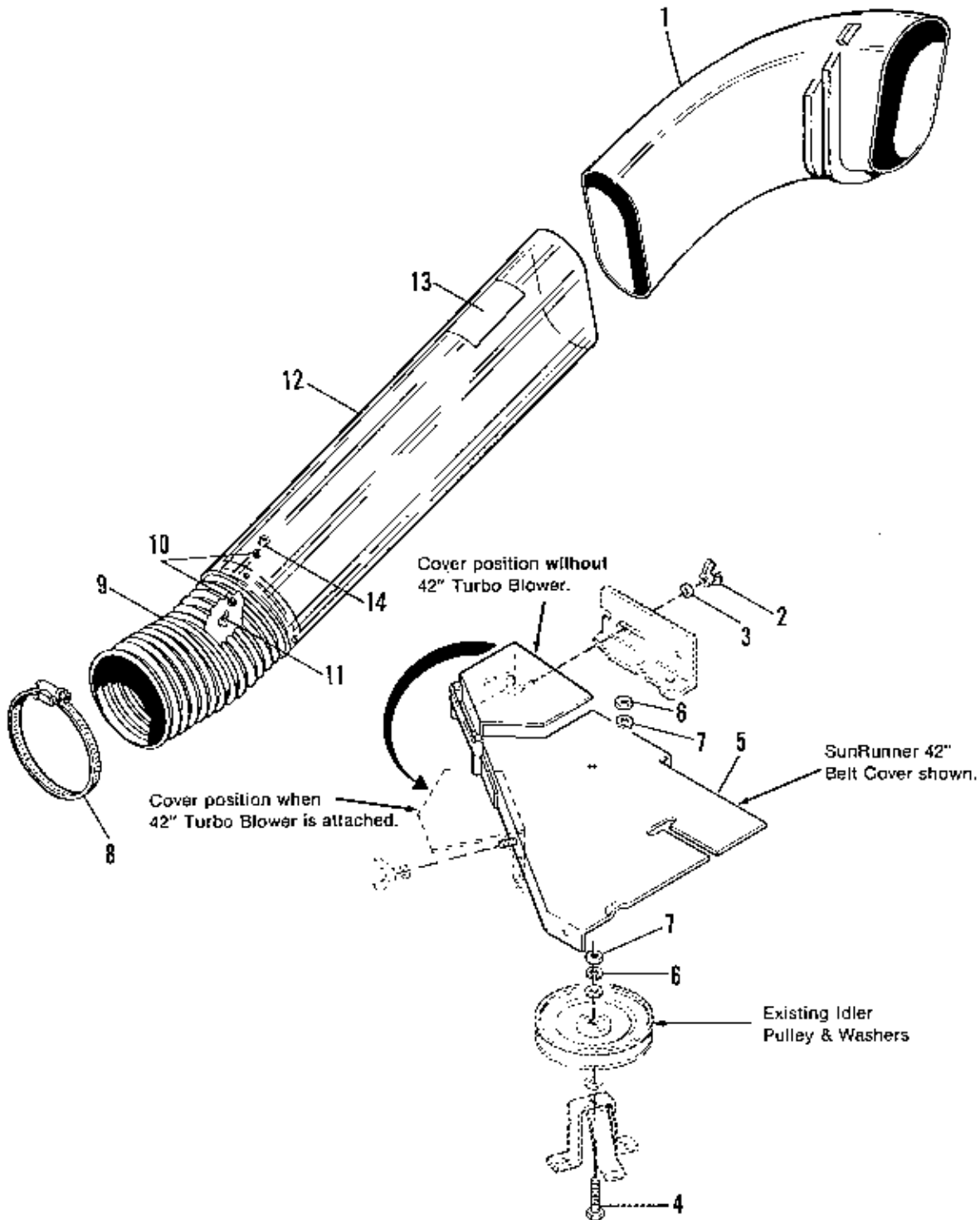
Ref. No. 4



NOTE: Use standard hardware torque spec. chart unless otherwise noted.

Deluxe Twin Catcher- Tube & Blade Group

Ref. No.	Part No.	Qty.	Description
1	1669029	1	ADAPTER
2	1700429	1	TUBE ASSY.
3	1669793	1	ELBOW
4	920462	1	NUT, Retainer, 1/4-20
5	1931646	1	SCREW, Whizlock, 1/4-20 x 1/2
6	916622	1	NUT, Hex, 1/4-20
7	916964	1	LOCKWASHER, 1/4
8	1923333	1	BOLT, Carriage, 1/4-20 x 5/8
9	1672171	1	BAFFLE, Deflector Side
10	1671565	1	BLADE, R.H.
11	1671593	1	BLADE, L.H.
12	1931334	1	BOLT, Carriage, 5/16-18 x 7/8
13	1917377	1	WASHER, 1/4
14	1917356	1	LOCKWASHER, 5/16
15	1917372	1	NUT, Hex, 5/16-18
16	1924856	1	SCREW, Taptite, 5/16-18 x 1/2
17	1656053	1	BAFFLE ASSY., Discharge
18	1916950	2	NUT, Hex, 3/8-16
19	1916965	2	LOCKWASHER, 3/8
20	1924940	4	WASHER, 3/8
21	1931348	3	BOLT, Carriage, 3/8-16 x 3/4
22	931942	3	NUT, Push-On
23	1675766	1	DECAL, Cleaning Instructions
24	1673757	1	SPRING, Retaining
25	1930531	2	SCREW, Truss, Phil. Hd., #10-32 x 1/2
26	1928919	2	NUT, Hex Washer, #10-32

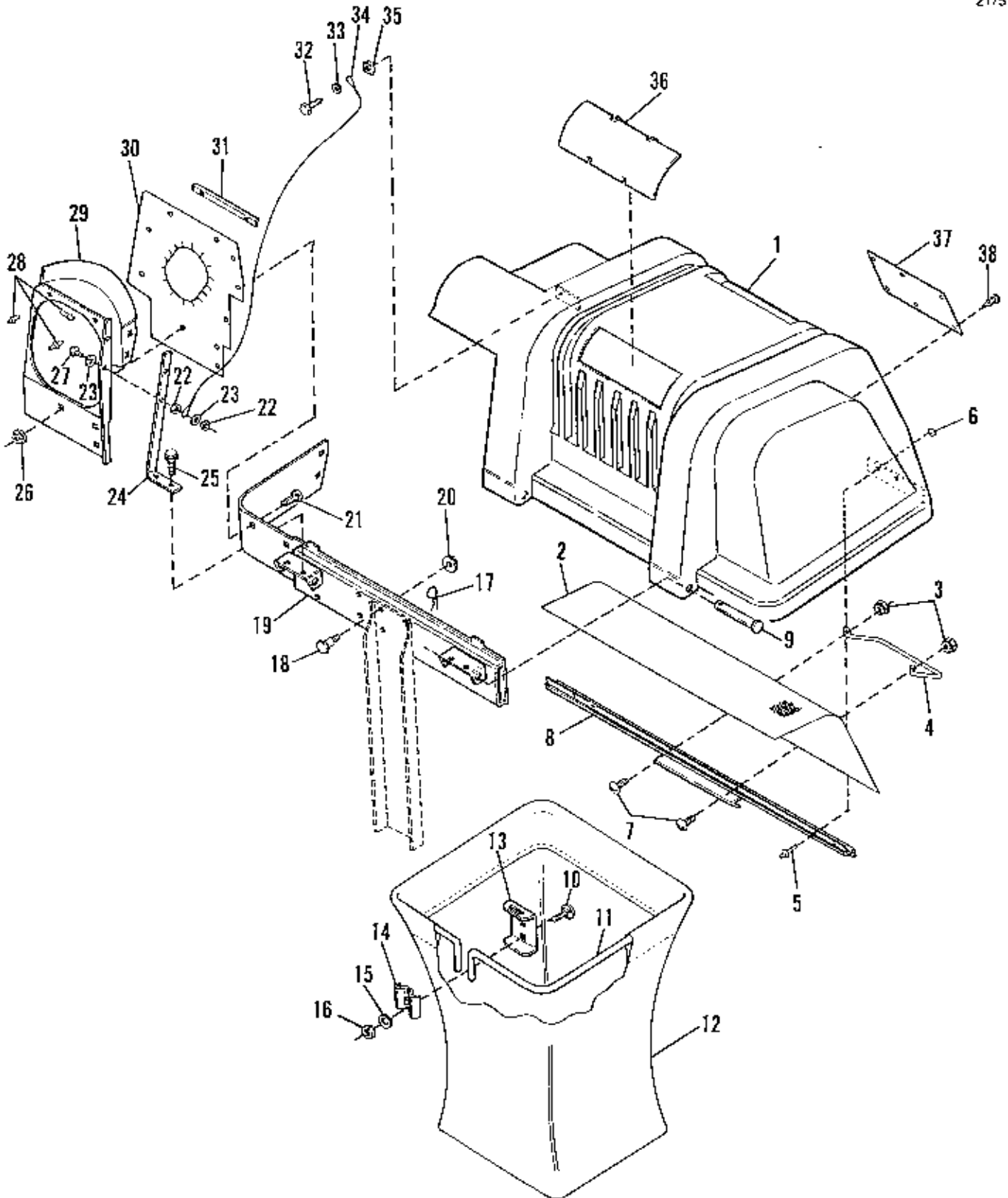


NOTE: Use standard hardware torque spec. chart unless otherwise noted.

Turbo Twin Catcher- Tube & Cover Group

Ref. No.	Part No.	Qty.	Description
1	1669793	1	ELBOW
2	960293	1	WING NUT, 1/4-20
3	1917377	1	WASHER, 1/4
4	1923701	1	CAPSCREW, Hex Hd., 3/8-16 x 2 (SunRunner Only)
	1922130	1	CAPSCREW, Hex Hd., 3/8-16 x 2-1/4 (FC Only)
5	1700131	1	COVER ASSY., Belt (42" SunRunner Only)
	1704369	1	COVER ASSY., Belt (42" FC Only)
6	1916950	2	NUT, Hex, 3/8-16
7	1916965	2	LOCKWASHER, 3/8
8	1679896	1	CLAMP, 6"
9	1679895	1	HOSE, Exhaust, 6" I.D.
10	1910531	8	WASHER, Rivet
11	1930531	4	SCREW, Truss Hd. Phil. #32 x 1/2
12	1701864	1	TUBE
13	1675766	1	DECAL, Cleaning Inst.
14	1928919	4	NUT & WASHER ASSY., #10-32

NOTE: Ref. Nos. 2-7 used with 42" Turbo Blower Assy. only.

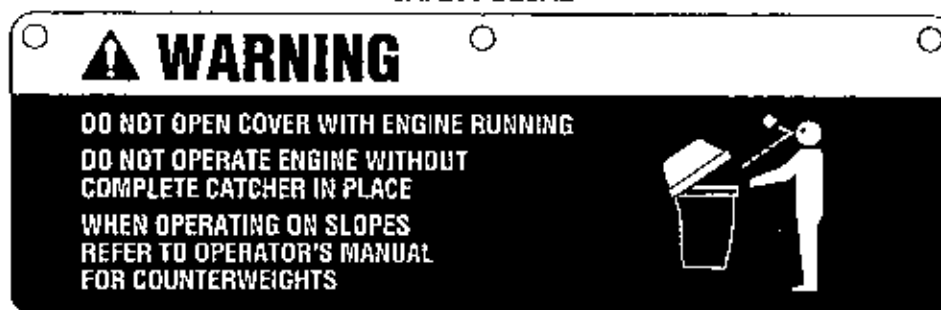


NOTE: Use standard hardware torque spec. chart unless otherwise noted.

Turbo Twin Catcher Cover Group

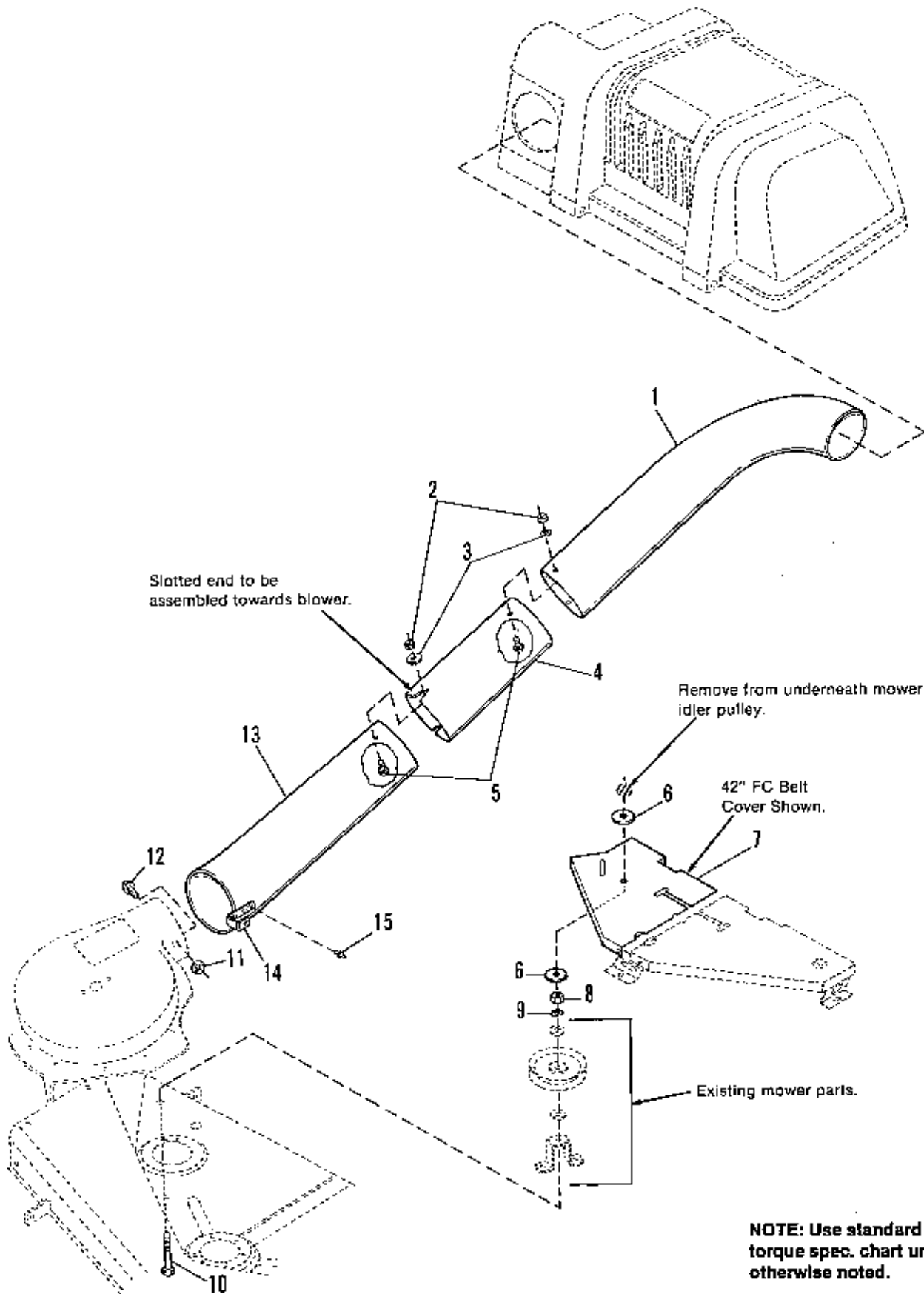
Ref. No.	Part No.	Qty.	Description
1	1704056	1	COVER (Incl. Ref. Nos. 2, 5, 6, 8 & 32-35)
2	1703700	1	SCREEN
3	1928919	2	NUT, Hex, #10-32
4	1703853	1	HANDLE, Latch
5	1675043	4	RIVET, Pop
6	1910531	4	WASHER
7	1930531	2	SCREW, Truss. Hd., #10-32 x 1/2
8	1704057	1	SEAL, Clip
9	960367	2	PIN, Round Head
10	1931333	4	CARRIAGE BOLT, 5/16-18 x 3/4
11	1703855	2	HOOP, Bag
12	1703764	2	BAG, Grass
13	1703807	2	HANGER
14	1672023	2	CLAMP
15	1917356	4	LOCKWASHER, 5/16
16	1917372	4	NUT, Hex, 5/16-18
17	1960221	2	PIN, Hair Clip
18	1921966	4	CAPSCREW, Hex Hd., 3/8-16 x 7/8
19	1703822	1	CROSS ASSY.
20	1928352	4	NUT, Hex Whizlock, 3/8-16
21	1960252	5	CARRIAGE BOLT, 1/4-20 x 5/8
22	1960077	2	NUT, Hex Lock, #8-32
23	1960096	2	WASHER
24	1704507	1	STRAP, Tube Support
25	1927428	2	TAPTITE, 1/4-20 x 3/8
26	1930642	5	LOCKNUT, Flange, 1/4-20 End Lock
27	1960399	1	SCREW, Rnd. Hd., #8-32 x 7/8
28	1960381	7	RIVET, Pop
29	1704075	1	SUPPORT, Tube (Incl. Ref. Nos. 22, 23, 24 & 27-31)
30	1704135	1	SEAL, Cover
31	1704508	3	BRACKET SEAL
32	1960400	1	SCREW, Self Tap, #10-12 x 5/8
33	1917377	1	WASHER, Plain, 1/4
34	1705876	1	CABLE, Double Loop
35	933886	1	NUT, Speed
36	1704180	2	WINDOW
37	1704405	1	DECAL, Safety
38	1667248	6	CLIP, Cance

SAFETY DECAL



Ref. No. 37

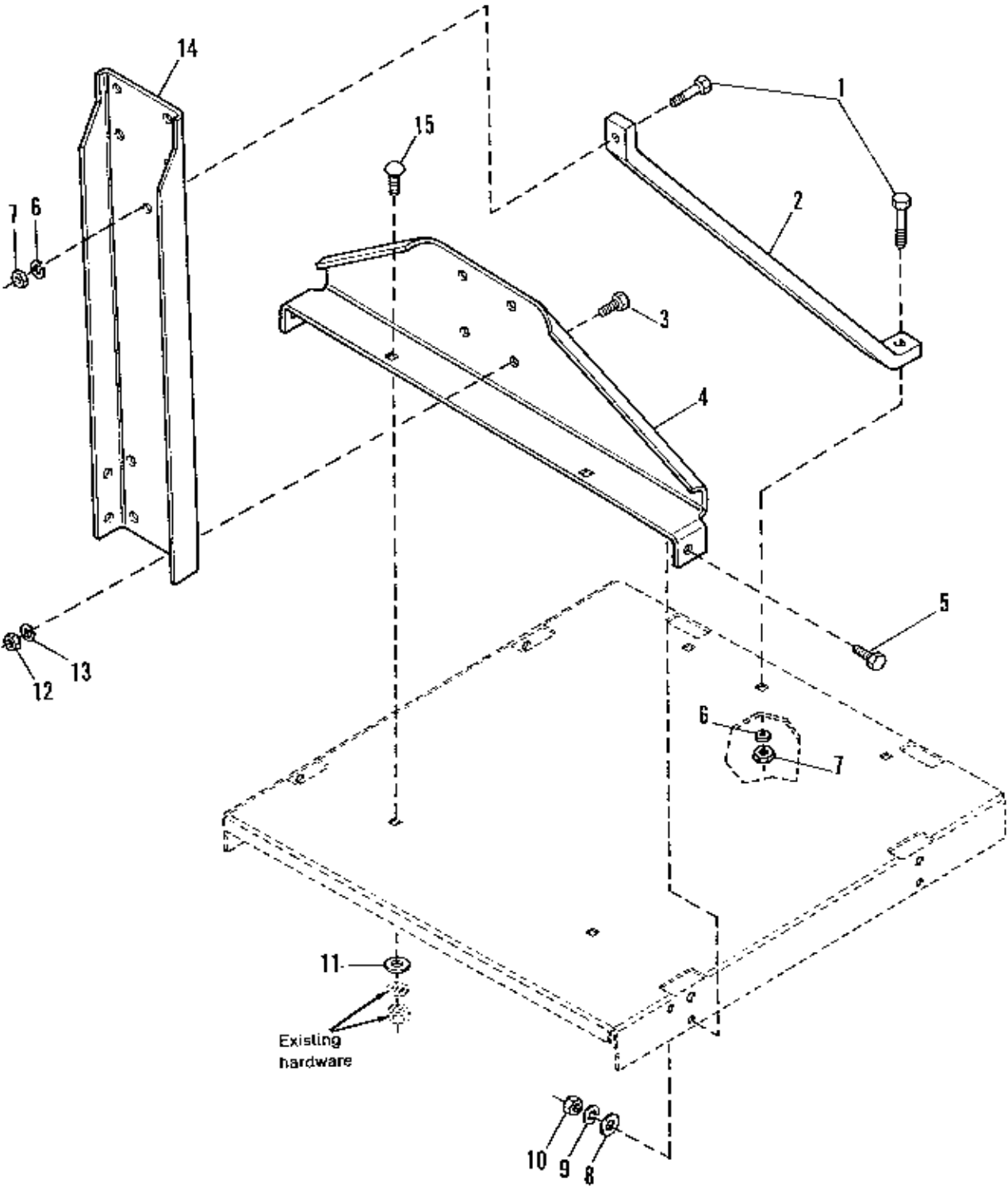
**2170



NOTE: Use standard hardware torque spec. chart unless otherwise noted.

Turbo Twin Catcher Tube Group

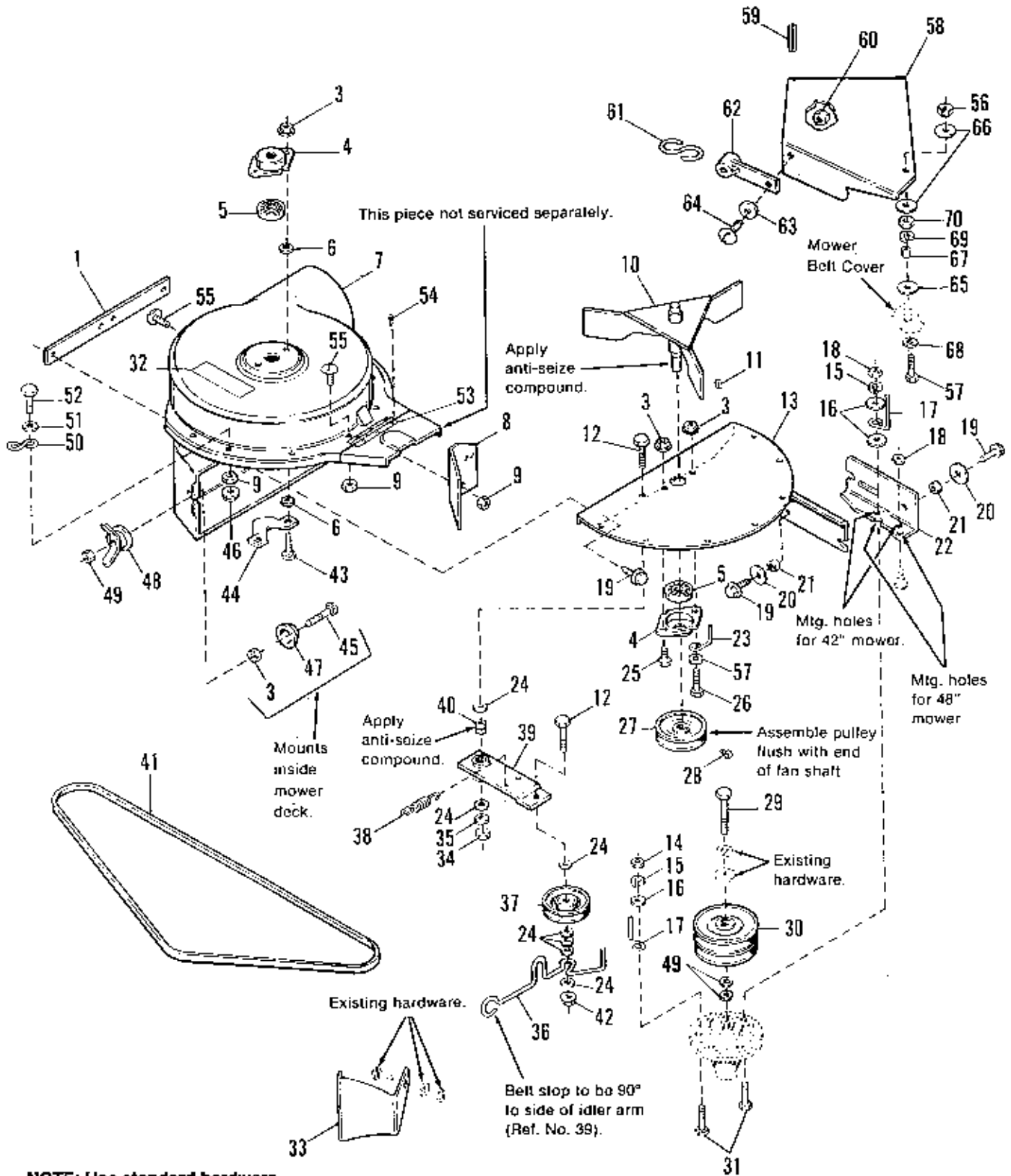
Ref. No.	Part No.	Qty.	Description
1	1704283	1	TUBE, Upper
2	1933896	4	NUT, Hex Lock, #10-24 w/Nylon Insert
3	1960096	4	WASHER, Flat
4	1704854	1	TUBE, Middle
5	1960404	4	SCREW, Truss Hd., #10-24 x 3/4
6	1924356	2	WASHER, Plain
7	1704369	1	COVER ASSY., Belt (42" FC Only)
	1700131	1	COVER ASSY., (42" SunRunner Only)
8	1916950	1	NUT, Hex, 3/8-16
9	1916965	1	WASHER, Lock, Spring, 3/8
10	1922130	1	CAPSCREW, Hex Hd., 3/8-16 x 2-1/4 (FC Only)
	1923701	1	CAPSCREW, Hex Hd., 3/8-16 x 2 (SunRunner Only)
11	1930641	1	NUT, Hex, Flange Lock, 1/4-20
12	1960252	1	CARRIAGE BOLT, 1/4-20 x 5/8
13	1705112	1	TUBE ASSY., Lower
14	1705083	1	CLIP, Tube
15	1673320	2	RIVET



NOTE: Use standard hardware torque spec. chart unless otherwise noted.

Turbo Twin Bag Catcher Hitch Group

Ref. No.	Part No.	Qty.	Description
1	1921977	2	CAPSCREW, Hex, 5/16-18 x 1-1/4
2	1705072	1	BRACE, Bar
3	1921210	4	CAPSCREW, Hex Hd., 3/8-16 x 1
4	1703844	1	BRACKET, Lower
5	1921959	2	CAPSCREW, Hex Hd., 1/4-20 x 5/8
6	1917356	3	LOCKWASHER, Spring, 5/16
7	1917372	3	NUT, Hex, 5/16-16
8	1921319	2	WASHER, Flat
9	1916964	2	LOCKWASHER, Spring, 1/4
10	1916622	2	NUT, Hex, 1/4-20
11	1933468	2	WASHER, Flat
12	1916950	4	NUT, Hex, 3/8-16
13	1916965	4	LOCKWASHER, Spring, 3/8
14	1703846	1	SUPPORT, Upright
15	1931335	2	CARRIAGE BOLT, 5/16-18 x 1

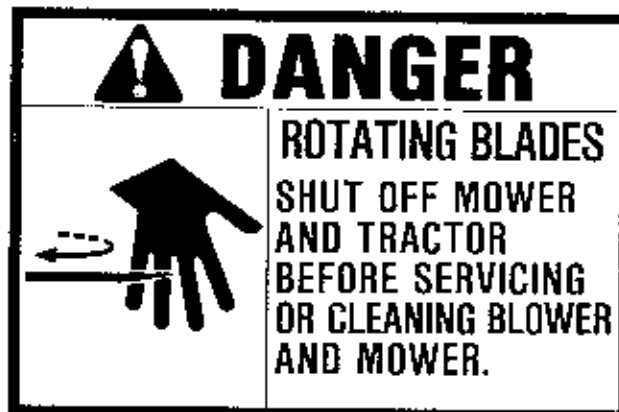


NOTE: Use standard hardware torque spec. chart unless otherwise noted.

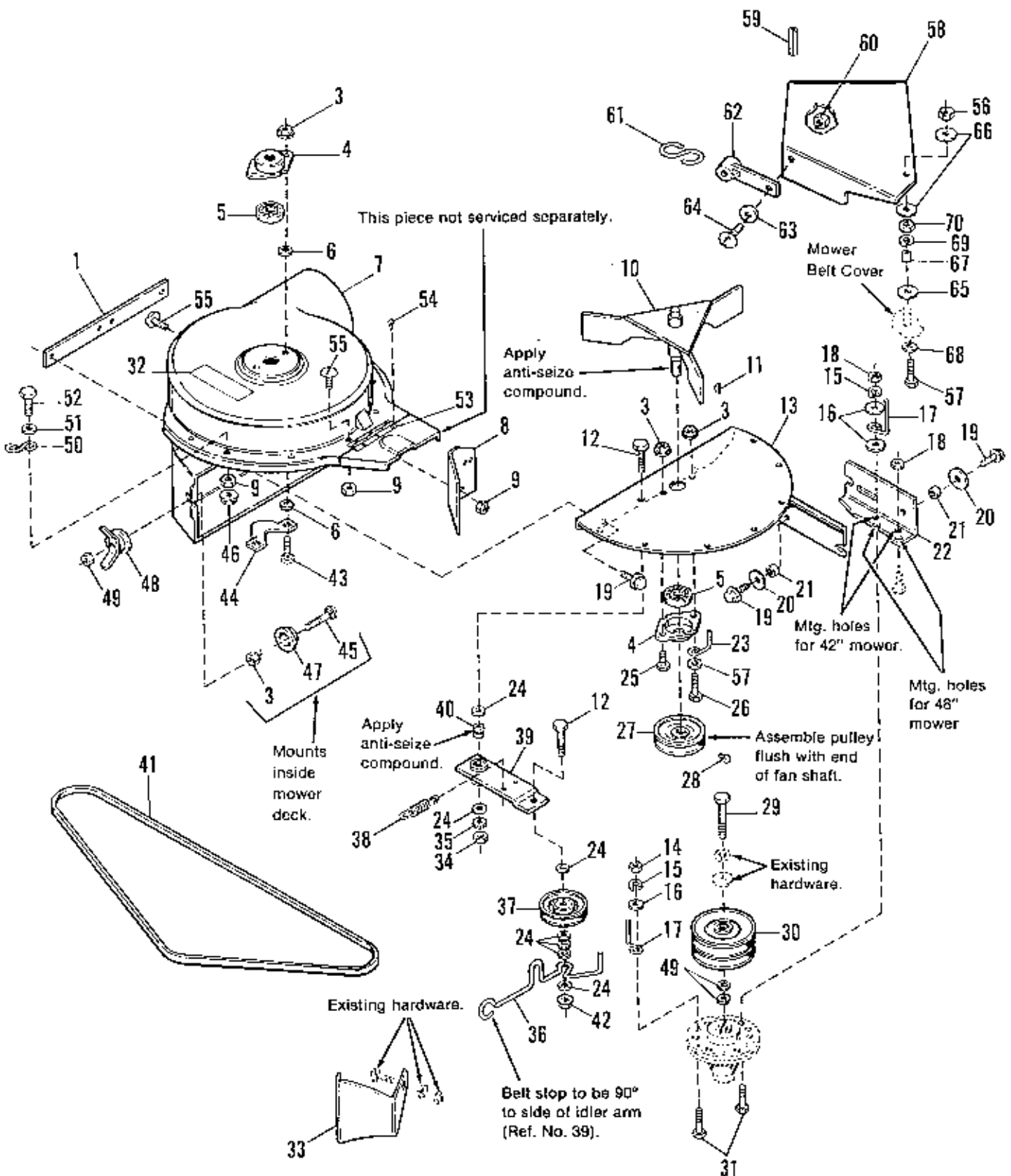
Ref. No.	Part No.	Qty.	Description
1	1678946	1	STRIP, Reinforcement, Blower Housing
2	1919326	1	WASHER, 11/32
3	1927557	5	NUT, Flange Lock, 5/16-18
4	1667341	2	BEARING, Retainer
5	1705897	2	BEARING
6	933988	4	PUSHNUT, 5/16
7	1700231	1	FAN HOUSING & HINGE ASSY. (inc. Ref. Nos. 32, 53 & 54)
8	1678994	1	BAFFLE, Fan Housing
9	1930641	10	NUT, Hex, Nylon Lock, 1/4-20
10	1678601	1	FAN ASSY.
11	918312	1	KEY, Woodruff #61, 3/16 x 5/8
12	1921971	2	CAPSCREW, Hex, 3/8-16 x 1-3/4
13	1678705	1	PLATE ASSY.
14	1917372	1	NUT, Hex, Full, 5/16-18
15	1917356	2	LOCKWASHER, 5/16
16	1919381	3	WASHER, Plain
17	1679105	2	STOP, Belt
18	1928698	2	NUT, Hex, Jam Lock, 5/16-18
19	1927429	5	SCREW, Tapite, 1/4-20 x 5/8
20	1960151	2	WASHER, 1/4
21	1675339	2	SPACER
22	1678676	1	BRACKET, Arbor
23	1678924	1	STOP, Belt
24	1924940	7	WASHER, Plain, 13/32
25	1920787	1	CAPSCREW, Hex, 5/16-18 x 1/2
26	1960104	1	CAPSCREW, Hex, 5/16-18 x 3/4
27	1702685	1	PULLEY, Driven
28	1928691	1	SETSCREW, Sq. Hd., 5/16-18 x 3/8
29	1927120	1	CAPSCREW, Hex, 7/16-14 x 2-1/4
30	1678609	1	PULLEY ASSY.
31	1933689	2	CAPSCREW, Hex, 5/16-18 x 1-1/2
32	1700259	1	DECAL, Danger, Blower
33	1678646	1	BAFFLE, Discharge
34	1916950	1	NUT, Hex, Full, 3/8-16

Ref. Nos. 35-67 found on pages 16 & 17.

SAFETY DECAL



Ref. No. 32

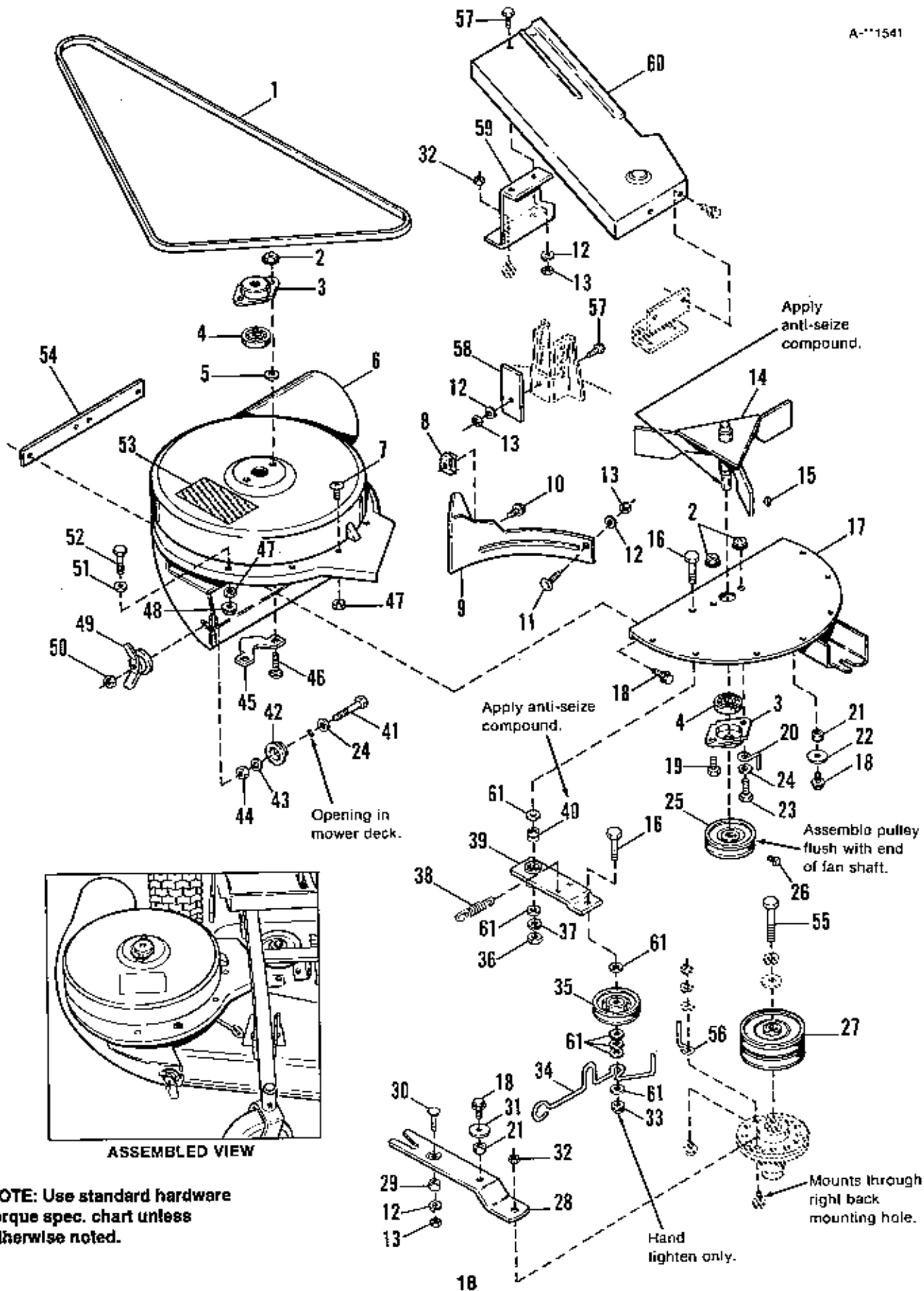


Turbo Blower System (42" & 48" Mowers)

Ref. No.	Part No.	Qty.	Description
35	1916965	1	LOCKWASHER, 3/8
36	1701095	1	LEVER, Belt Stop
37	1708029	1	"V" PULLEY, Idler
38	1679554	1	SPRING, Tension
39	1700861	1	IDLER ARM ASSY.
40	1686114	1	SPACER
41	1700415	1	BELT, Turbo
42	1930645	1	NUT, Hex, Flange Lock, 3/8-16
43	1931333	2	CARRIAGE BOLT, 5/16-18 x 3/4
44	1678811	1	PLATE, Flange, Blower Housing
45	1931339	1	CARRIAGE BOLT, 5/16-18 x 2
46	1930642	1	NUT, Flange Lock, 1/4-20
47	1679164	1	CUP
48	1679163	1	NUT ASSY., Wing
49	1960114	2	WASHER (As Required)
50	1672689	1	"S" HOOK
51	1921319	1	WASHER, Plain, 9/32
52	1921961	1	CAPSCREW, Hex Hd., 1/4-20 x 1-1/4
53	1679207	1	HINGE
54	1673450	6	RIVET, Pop
55	1921959	9	SCREW, Hex Hd., 1/4-20 x 5/8
*56	1923362	1	NUT, Full, Lock, 5/16-18
*57	1960272	1	CAPSCREW, Hex, 5/16-18 x 5-1/2
*58	1704960	1	COVER ASSY., Pulley
*59	1679165	1	MOLDING
*60	1930627	1	NUT, Hex, Full Lock, #10-32
*61	1679204	1	"S" HOOK
*62	1679205	1	STRAP
*63	1960096	1	WASHER, Special
*64	1930531	1	SCREW, Truss, #10-32 x 1/2
*65	1920283	3	WASHER, Special
*66	1960044	1	WASHER, Plain
*67	1670985	1	SPACER
*68	1919381	1	WASHER, Plain, 5/16
*69	1917356	1	LOCKWASHER, Spring, 5/16
*70	1917372	1	NUT, Hex, Full, 5/16-18

*Used on Mfg. No. 1691810 only.

Ref. Nos. 1-34 found on pages 14 & 15.

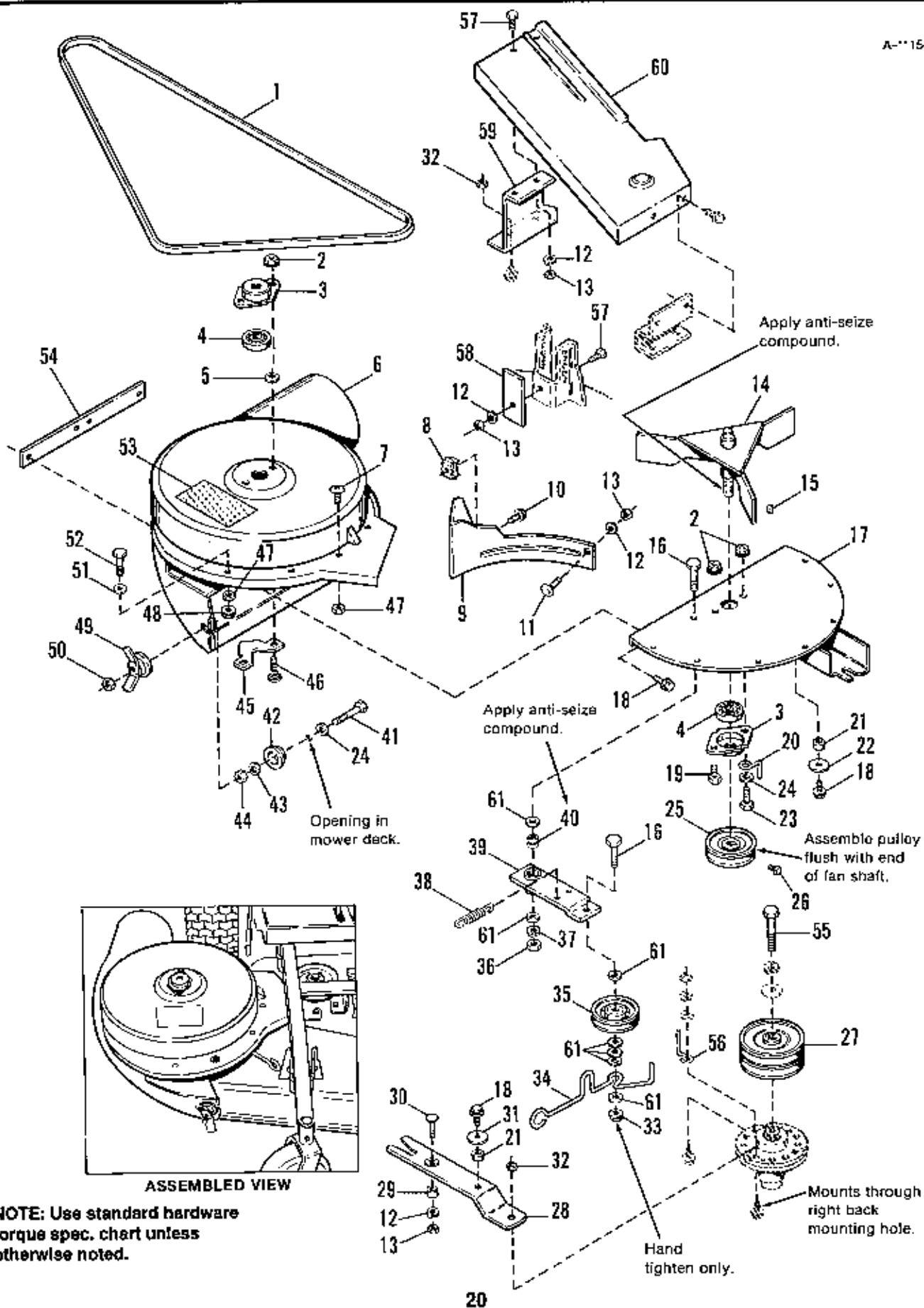


NOTE: Use standard hardware torque spec. chart unless otherwise noted.

Turbo Blower System (36" Mowers only)

Ref. No.	Part No.	Qty.	Description
1	1679915	1	BELT
2	1935048	4	NUT, Flange Lock, 5/16-18
3	1667341	2	BEARING, Retainer
4	1705897	2	BEARING
5	933988	2	PUSHNUT, 5/16
6	1700965	1	HOUSING ASSY., (Incl. Ref. No. 53)
7	1700819	6	SCREW, Truss Hd, 1/4-20 x 5/8
8	920462	1	NUT, Retainer, 1/4-20
9	1672171	1	BAFFLE
10	1931646	1	SCREW, Whizlock 1/4-20 x 1/2
11	1960252	1	CARRIAGE BOLT, 1/4-20 x 5/8
12	1916964	5	LOCKWASHER, 1/4
13	1916622	5	NUT, Hex Full, 1/4-20
14	1676601	1	FAN ASSY.
15	918312	1	KEY, Woodruff
16	1921971	2	CAPSCREW, 3/8-16 x 1-3/4
17	1700696	1	PLATE ASSY.
18	1927429	5	SCREW, Taptite, 1/4-20 x 5/8
19	1920787	1	CAPSCREW, Hex Hd., 5/16-18 x 1/2
20	1676924	1	STOP, Belt
21	1675339	2	SPACER
22	1960151	1	WASHER, Special
23	1960104	1	CAPSCREW, Hex Thin Hd., 5/16-18 x 3/4
24	1919326	2	WASHER, Plain, 11/32
25	1702685	1	PULLEY, Driven
26	1928691	1	SETSCREW, 5/16-18 x 5/16
27	1701120	1	PULLEY ASSY.
28	1700694	1	STRAP
29	1700695	1	SPACER
30	1931320	1	CARRIAGE BOLT, 1/4-20 x 1-1/4

See pages 20 & 21 for Ref. Nos. 31-61.

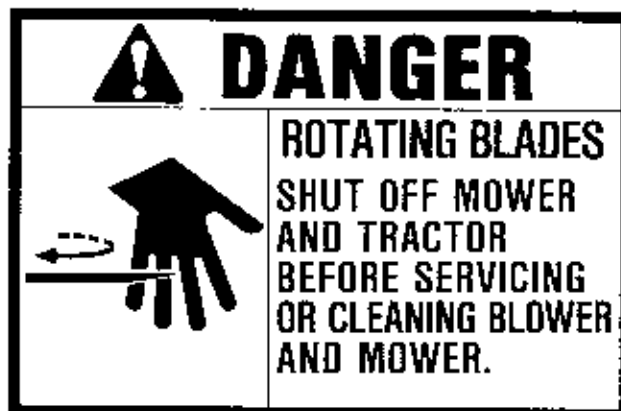


Turbo Blower System (36" Mowers only)

Ref. No.	Part No.	Qty.	Description
31	1919381	1	WASHER, Special
32	1928698	3	NUT, Hex Jam Lock, 5/16-18
33	1930645	1	NUT, Hex Flange Lock, 3/8
34	1701095	1	LEVER, Belt, Retainer
35	174561	1	PULLEY, Idler
36	1916950	1	NUT, Hex Full, 3/8-16
37	1916965	1	LOCKWASHER, 3/8
38	1679554	1	SPRING, Tension
39	1700861	1	IDLER ARM ASSY.
40	1666114	1	SPACER
41	1960318	1	CAPSCREW, Hex, 5/16-18 x 2-1/2
42	1679164	1	CUP
43	1917356	1	LOCKWASHER, 5/16
44	1917372	1	NUT, Hex, Full, 5/16-18
45	1678811	1	PLATE, Flange
46	1931333	2	CARRIAGE BOLT, 5/16-18 x 3/4
47	1920397	7	NUT, Hex, Lock, Nylon, 1/4-20
48	1930642	1	NUT, Hex, Flange Lock, 1/4-20
49	1679163	1	NUT ASSY.
50	1923362	1	NUT, Hex, Full, Lock, 5/16-18
51	1921319	1	WASHER, Plain, 9/32
52	1921960	1	CAPSCREW, Hex, 1/4-20 x 1-
53	1700259	1	DECAL, Danger
54	1678946	1	STRIP, Reinforcement
55	1927531	1	CAPSCREW, Hex Hd, 11/64-14 x 2
56	1701179	1	STOP, Belt
57	1921959	3	CAPSCREW, Hex, 1/4-20 x 5/8
58	1701253	1	STOP
59	1701176	1	BRACKET, Belt Cover
60	1701177	1	COVER, Belt
61	1924940	7	WASHER, Plain

See pages 18 & 19 for Ref. Nos. 1-30.

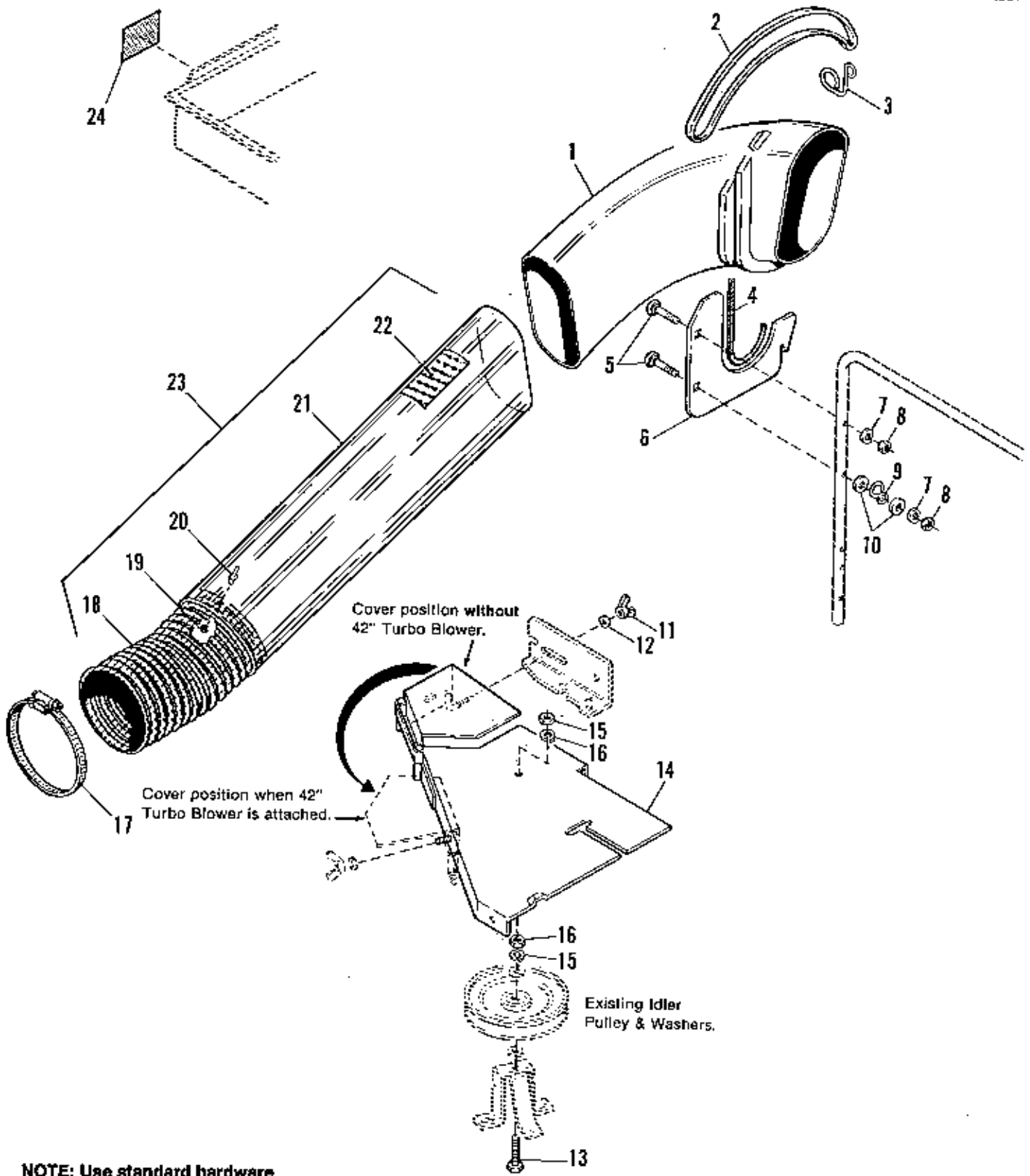
SAFETY DECAL



Ref. No. 53

Turbo Cart Collector - Cover Group

Ref. No.	Part No.	Qty.	Description
1	1702003	1	COVER
2	1700264	1	TUBE, Support
3	1700267	2	SPACER, Plastic
4	1921221	4	CAPSCREW, 5/16-18 x 1-1/2
5	1919326	4	WASHER, Lock, 5/16-18
6	1923362	4	NUT, Lock, 5/16-18
7	1918196	2	COTTER, Hairpin
8	1700266	1	STRAP, Rubber
9	1700288	1	ROD, Frame
10	1700285	1	ROD, Support



NOTE: Use standard hardware torque spec. chart unless otherwise noted.

Turbo Cart Collector - Tube & Belt Cover Group

Ref. No.	Part No.	Qty.	Description
1	1669793	1	ELBOW
2	1665872	1	STRAP
3	1672688	1	HOOK, Strap
4	1673874	1	TRIM
5	1931338	2	BOLT, Rd. Hd., 5/16-18 x 1-3/4
6	1672335	1	BRACKET, Saddle
7	1917356	2	LOCKWASHER, 5/16
8	1917372	2	NUT, Hex, 5/16-18
9	1672689	1	"S" HOOK
10	1919326	2	WASHER, 5/16
11	960293	1	WING NUT, 1/4-20
12	1917377	1	WASHER, 1/4
13	1923701	1	CAPSCREW, Hex Hd., 3/8-16 x 2
14	1700131	1	COVER ASSY., Belt
15	1916950	2	NUT, Hex, 3/8-16
16	1916965	2	LOCKWASHER, 3/8
17	1679896	1	CLAMP, 6"
18	1679895	1	HOSE, Exhaust, 6" I.D.
19	1910531	4	RIVET, Pop
20	1673320	4	RIVET, Pop
21	1701864	1	TUBE
22	1675766	1	DECAL, Cleaning Inst.
23	1685364	1	TUBE ASSY., (Inc. Ref. Nos. 18-22)
24	1676923	1	DECAL, Warning, Cover

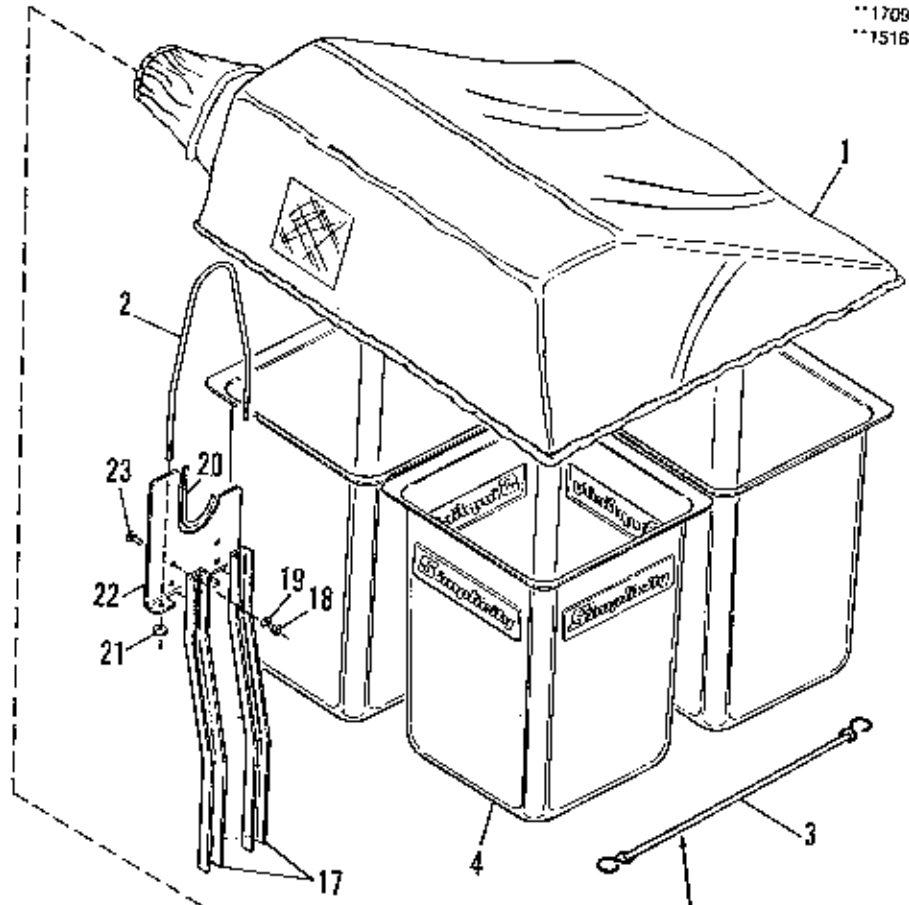
NOTE: Ref. Nos. 11-16 used with 42" Turbo Blower Assembly only.

SAFETY DECAL

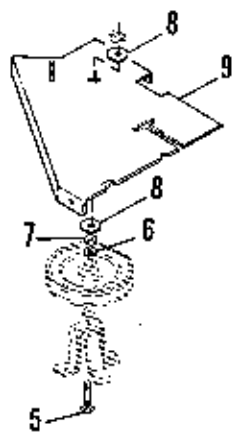
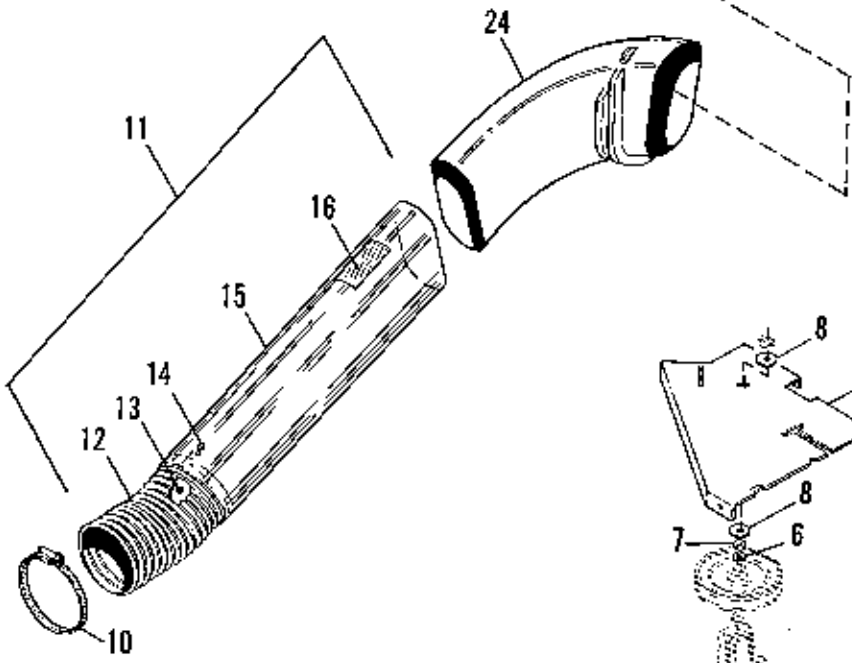


Ref. No. 24

**1709
**1516



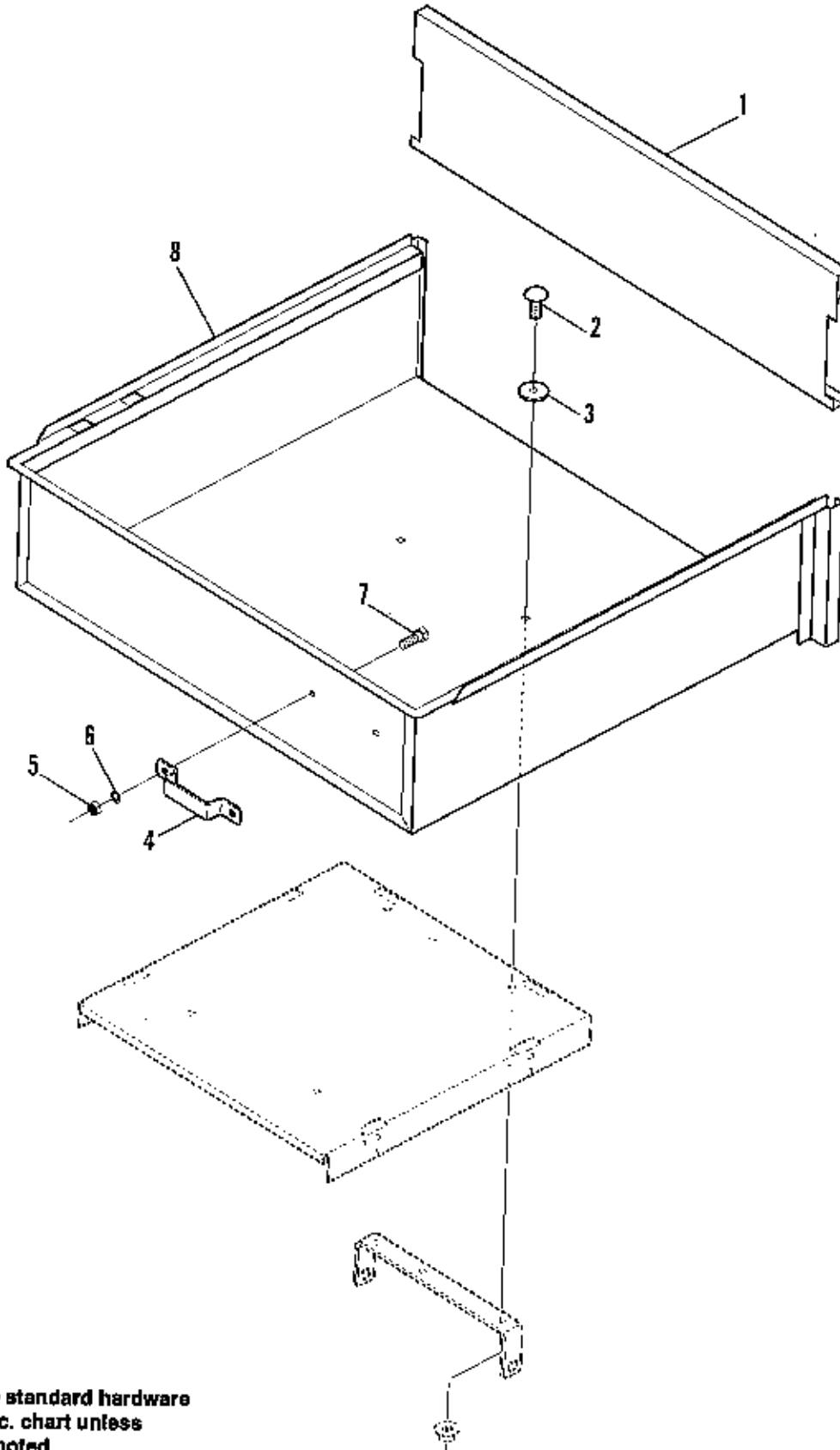
Attach cord (Ref. No. 3) to tab on front cover. Position between bins and hook in hole on top surface of tailgate.



NOTE: Use standard hardware torque spec. chart unless otherwise noted.

Quad Bagger Collection Group

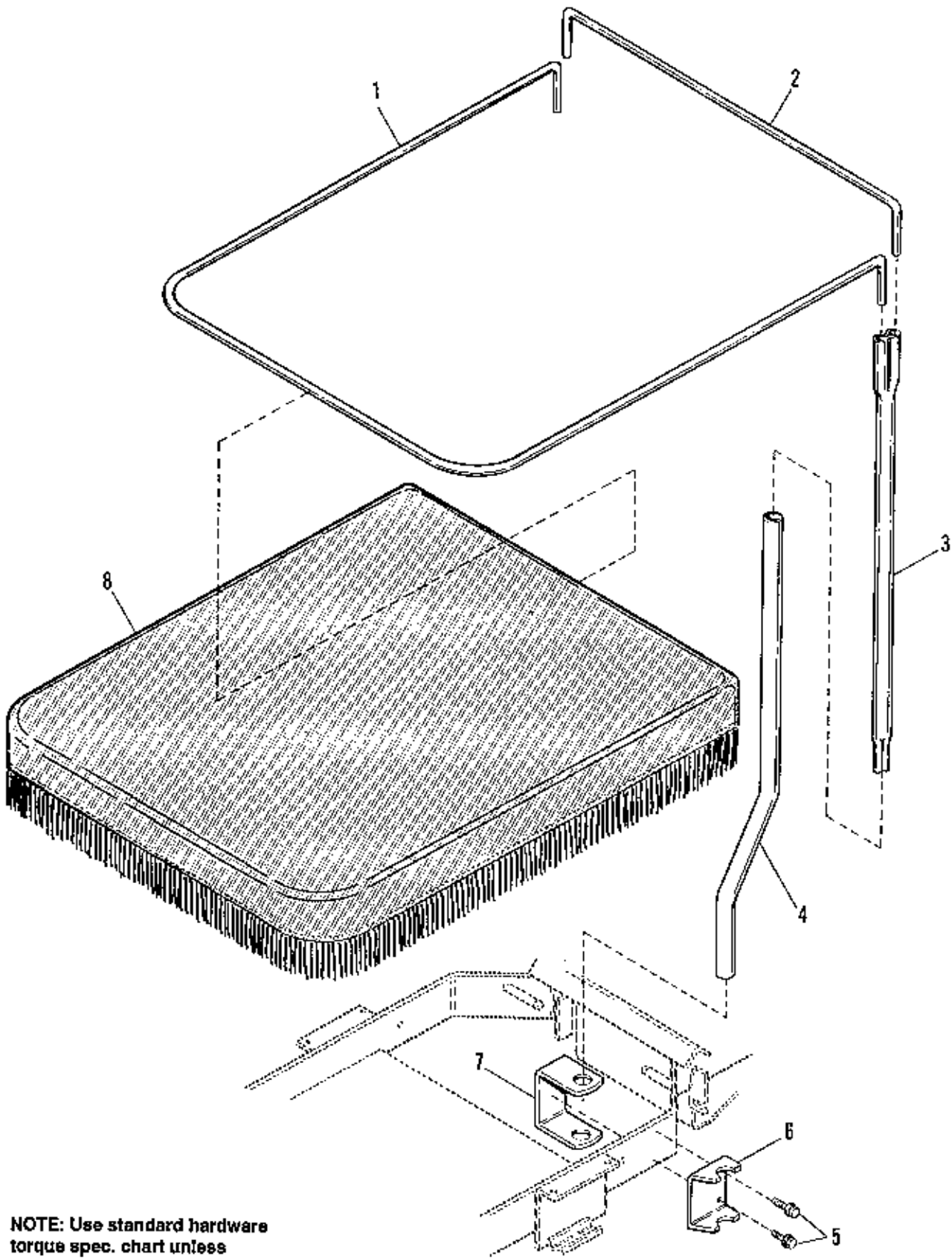
Ref. No.	Part No.	Qty.	Description
1	1702243	1	HOOD
2	1702829	1	CLAMP, Elbow
3	1705282	1	SHOCK CORD
4	1702186	4	BASKET, Grass
5	1922130	1	CAPSCREW, Hex, 3/8-16 x 2-1/4
6	1916965	1	WASHER, Spring Lock, 3/8
7	1916950	1	NUT, Hex, 3/8-16
8	1924356	2	WASHER, Plain
9	1704389	1	COVER ASSY., 42" Mower
	1704371	1	COVER ASSY., 48" Mower
10	1679896	1	CLAMP, 6"
11	1704973	1	TUBE ASSY. (Incl. Ref. Nos. 12,13,14,15 & 16)
12	1679895	1	HOSE, 6" I.D.
13	1910531	4	WASHER, Rivet
14	1673320	4	RIVET, Pop
15		1	TUBE (Order Ref. No. 11)
16	1675766	1	DECAL, Cleaning Instructions
17	1702828	2	CHANNEL, Support
18	1916622	4	NUT, Hex, 1/4-20
19	1916964	4	LOCKWASHER, Spring, 1/4
20	1673874	1	TRIM
21	1923362	2	NUT, Hex, Centerlock, 5/16-18
22	1702827	1	BRACKET, Saddle
23	1960252	4	CARRIAGE BOLT, 1/4-20 x 5/8
24	1669793	1	ELBOW
25	1702829	1	CLAMP, Elbow



NOTE: Use standard hardware torque spec. chart unless otherwise noted.

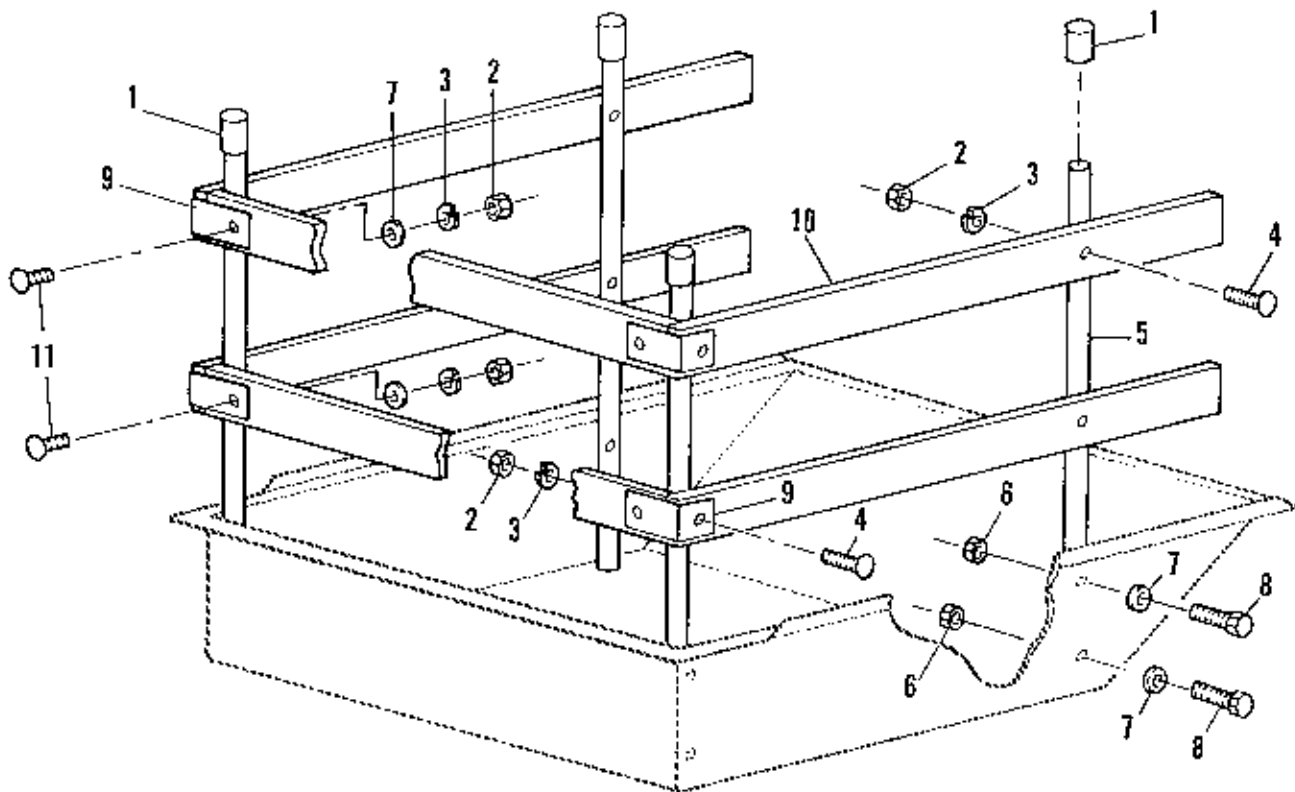
Quad Bagger Collector Dump Cart Group

Ref. No.	Part No.	Qty.	Description
1	1703337	1	TAILGATE (1691808)
	1708239	1	TAILGATE (1692100)
2	1919384	4	WASHER, Plain, 7/16 x 1-1/4
3	1931334	4	CARRIAGE BOLT, 5/16-18 x 7/8
4	1700768	1	HANDLE, Lift
5	1916622	2	NUT, Hex, 1/4-20
6	1916964	2	LOCKWASHER, Spring, 1/4
7	1921958	2	CAPSCREW, 1/4-20 x 1/2
8	1704492	1	BOX (1691808)
	1708238	1	BOX (1692100)



NOTE: Use standard hardware torque spec. chart unless otherwise noted.

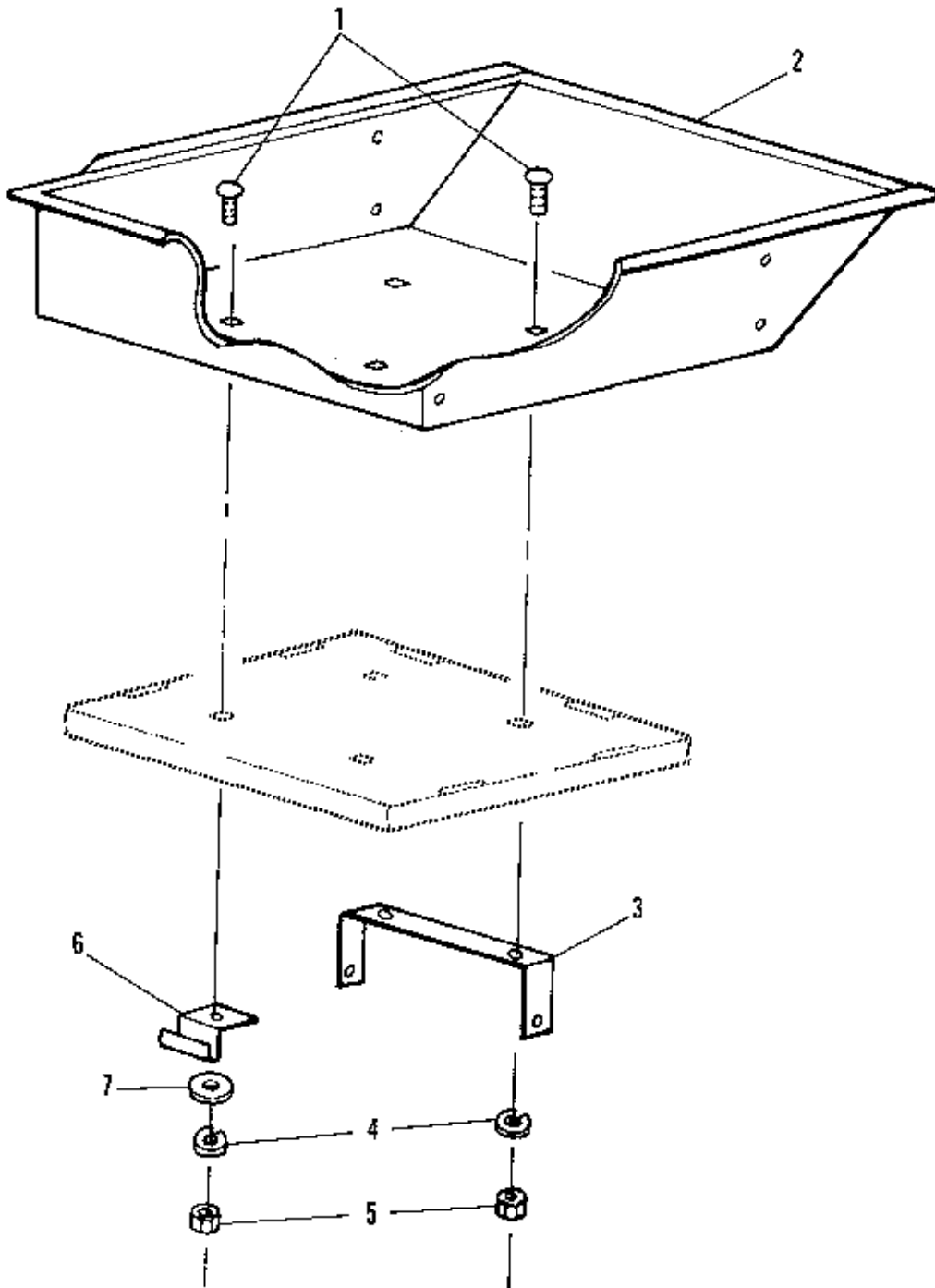
Ref. No.	Part No.	Qty.	Description
1	1701161	1	FRAME, Cover, Front
2	1701162	1	FRAME, Cover, Rear
3	1701160	2	TUBE, Upright, Upper
4	1611825	2	TUBE, Upright, Lower
5	1925592	4	SCREW, Taptite, 1/4-20 x 3/4
6	1701163	2	BRACKET, Tube
7	1701164	2	CLAMP, Tube
8	1700578	1	COVER, Fabric, Surrey



NOTE: Use standard hardware torque spec. chart unless otherwise noted.

Hi-Side Kit

Ref. No.	Part No.	Qty.	Description
1	1676894	4	CAP, Plastic
2	1917372	12	NUT, Hex, 5/16-18
3	1917356	12	LOCKWASHER, 5/16
4	1931339	8	BOLT, Carriage, 5/16-18 x 2
5	1700270	4	STAKE
6	1923362	8	NUT, Loc, 5/16-18
7	1919326	12	WASHER, 5/16
8	1921221	8	CAPSCREW, Hex, 5/16-18 x 1-1/2
9	1700269	4	L-BRACKET
10	1676902	6	SIDE, Wood (Drill holes and cut to size.)
11	1960223	4	BOLT, Carriage, 5/16-18 x 1-1/4

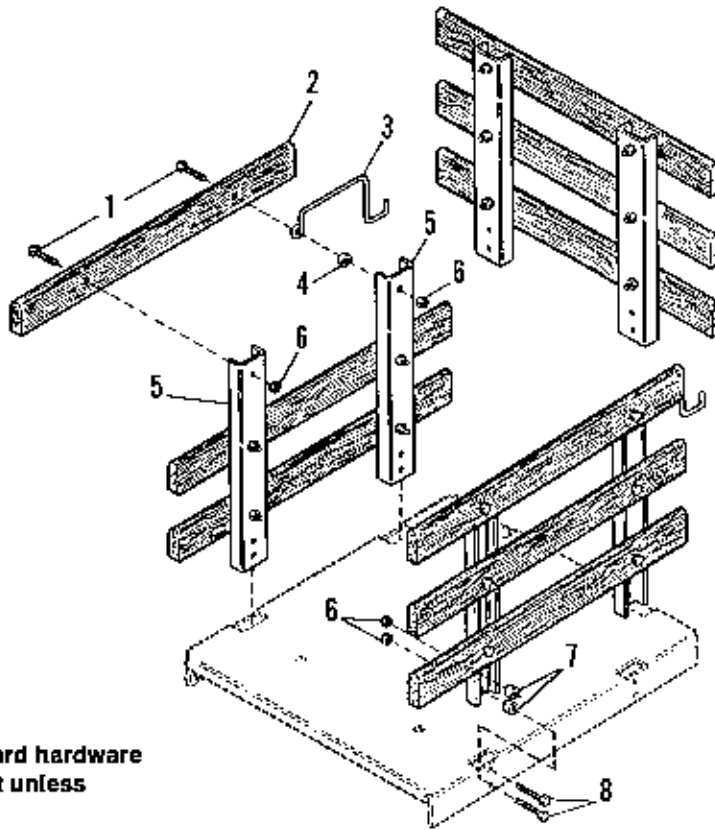


NOTE: Use standard hardware torque spec. chart unless otherwise noted.

Steel Tilt-Hopper

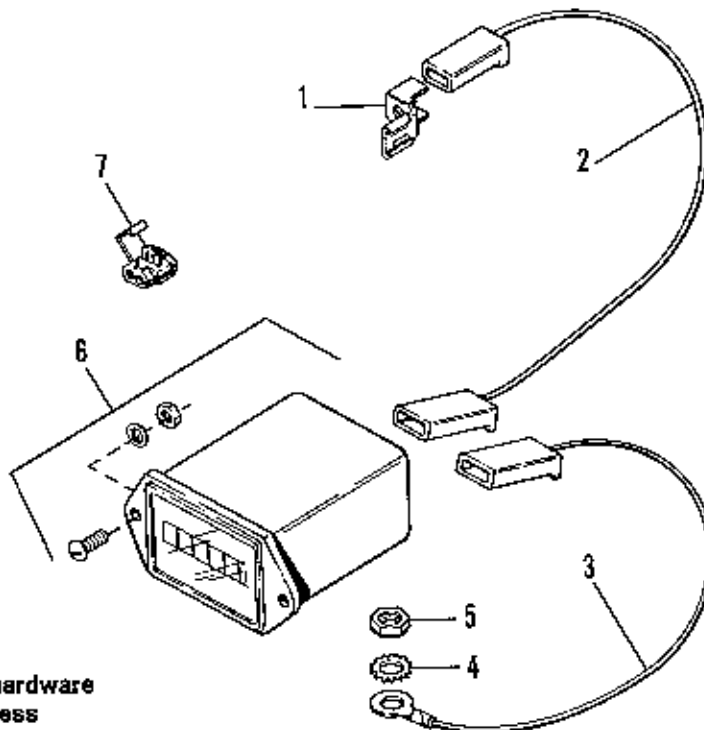
Ref. No.	Part No.	Qty.	Description
*1	1931333	4	BOLT, Carriage, 5/16-18 x 3/4
2		1	STEEL TILT-HOPPER (Order Mfg. No. 1691243)
*3	1704173	1	BRACKET, Pivot, Platform
*4	1917356	4	LOCKWASHER, 5/16
*5	1917372	4	NUT, Hex, 5/16-18
*6	1664004	2	CLIP, Latch Rod
7	1919381	2	WASHER, 5/16

***NOTE: These are standard production parts on all SunRunner units.**



NOTE: Use standard hardware torque spec. chart unless otherwise noted.

Hour Meter Kit (Order through Parts Dept.)



NOTE: Use standard hardware torque spec. chart unless otherwise noted.

Mfg. No. 1691256

Woodside Transporter

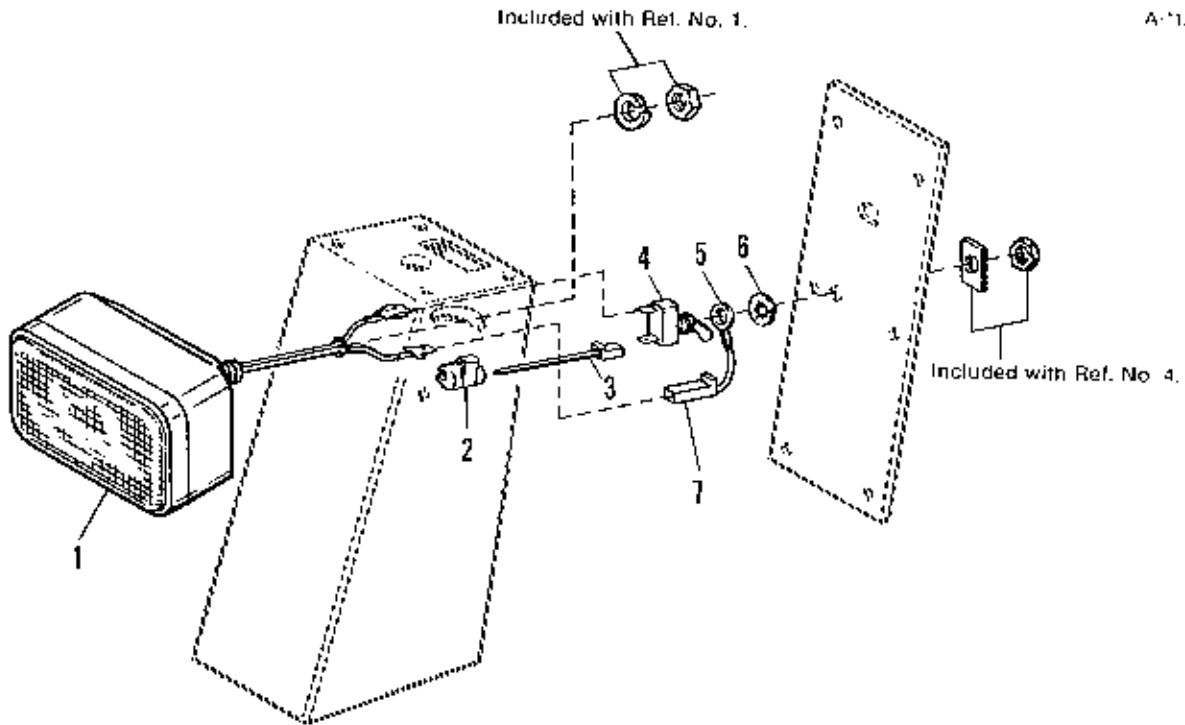
Ref. No.	Part No.	Qty.	Description
1	1922837	18	CAPSCREW, 1/4-20 x 1-1/2
2	1678370	9	WOOD-GATE
3	1678428	2	LATCH-GATE
4	1960234	2	SPACER
5	1678369	6	CHANNEL
6	1923358	26	NUT, Hex Lock, 1/4-20
7	1679911	8	SPACER
8	1921960	8	CAPSCREW, 1/4-20 x 1.00

Mfg. No. 1685535

Hour Meter Kit (Order through Parts Dept.)

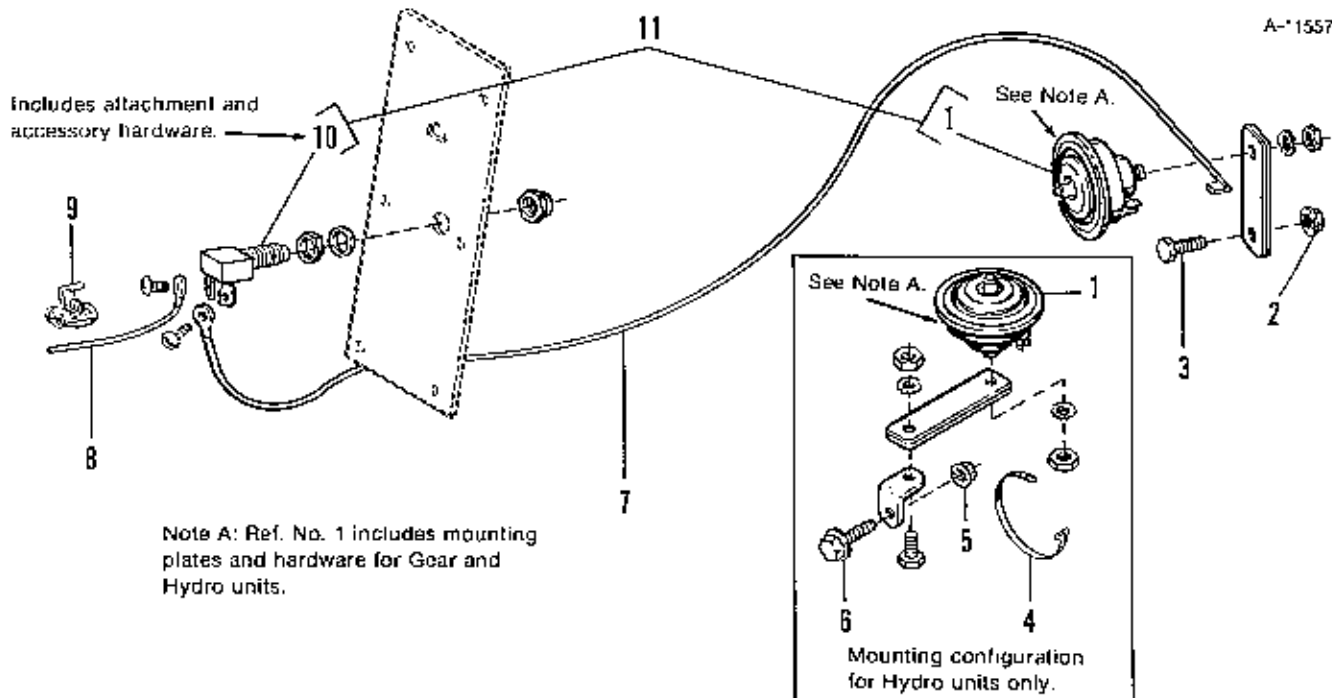
Ref. No.	Part No.	Qty.	Description
1	172996	1	ADAPTOR, 2 Way
2	1656083	1	WIRE ASSY.
3	1655592	1	CONNECTOR ASSY.
4	1921880	1	LOCKWASHER, Ext. Tooth, 1/4
5	1916622	1	NUT, Hex, Full, 1/4-20
6		1	HOUR METER (Order Mfg. No. 1685535)
7	1605751	1	CONNECTOR, Wire, Self-Stripping

A-1556

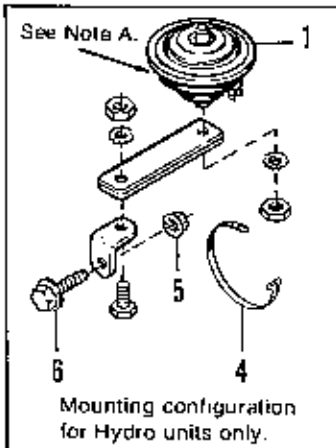


NOTE: Use standard hardware torque spec. chart unless otherwise noted.

A-1557



Note A: Ref. No. 1 includes mounting plates and hardware for Gear and Hydro units.



NOTE: Use standard hardware torque spec. chart unless otherwise noted.

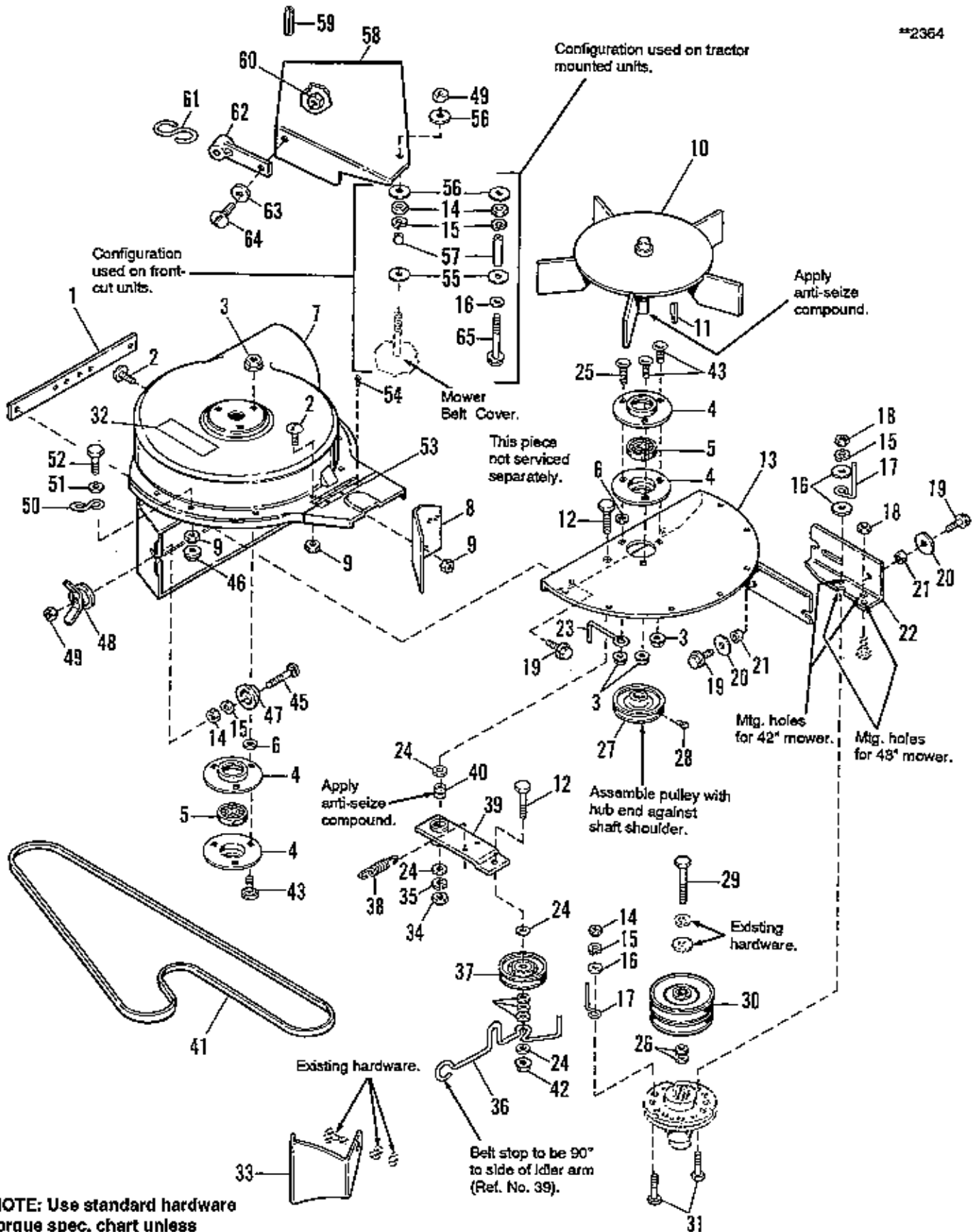
Headlight Kit

Ref. No.	Part No.	Qty.	Description
1	1679954	1	HEADLIGHT ASSY.
2	1605751	1	CONNECTOR, Wire, Self-Stripping
3	1700716	1	WIRE ASSY.
4	122184	1	SWITCH, Toggle
5	1679955	1	WIRE ASSY. (Ground)
6	1909589	1	LOCKWASHER, Int. Tooth, 1/2" I.D.
7	1700300	1	CONNECTOR BODY

Mfg. No. 1691530

Horn Kit

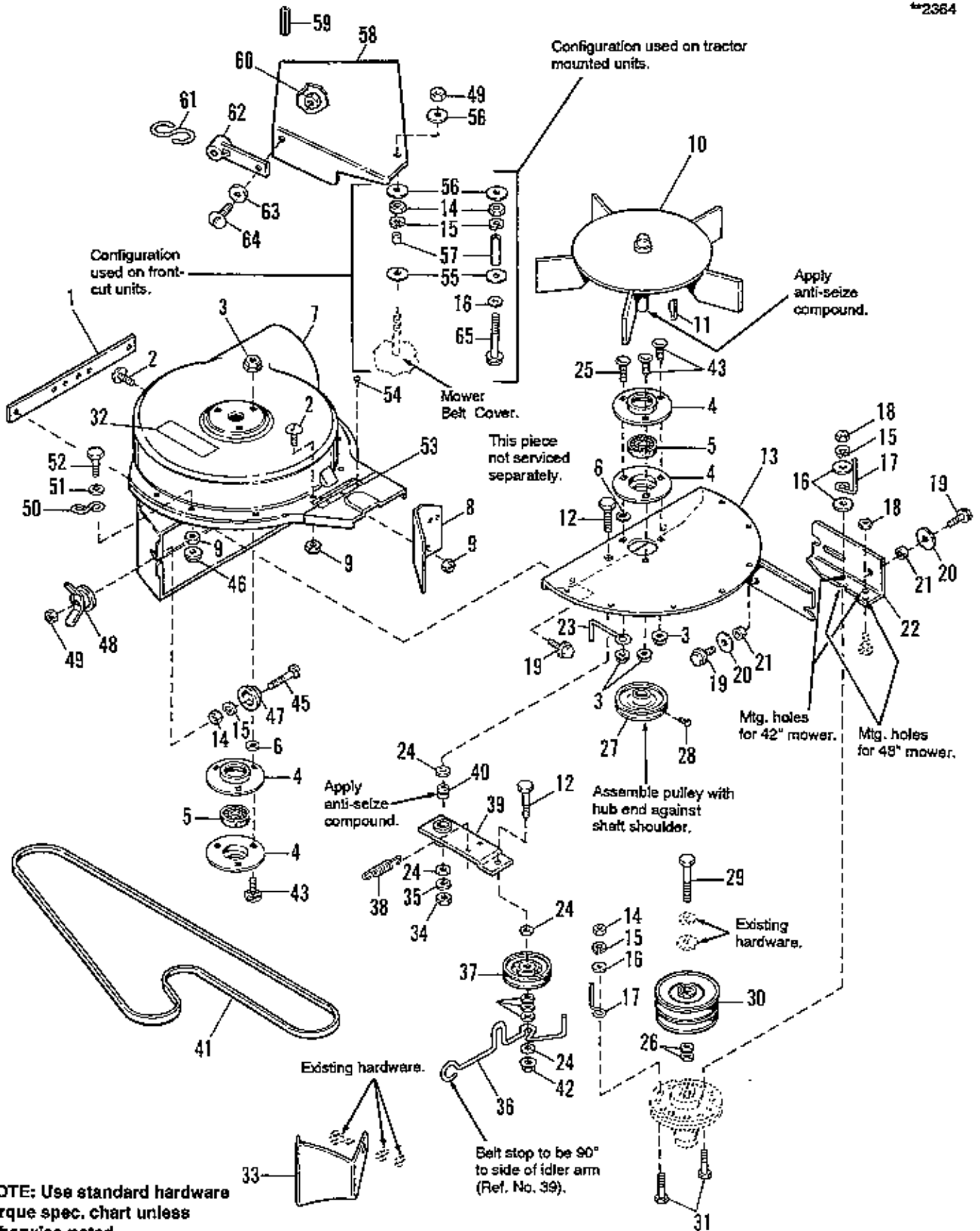
Ref. No.	Part No.	Qty.	Description
1	1679968	1	HORN ASSY. (Included in Ref. No. 11)
2	1930641	1	NUT, Flange Whiz Lock, 1/4-20
3	1921959	1	CAPSCREW, Hex, 1/4-20 x 5/8
4	932747	1	TIE, Cable
5	1931277	1	NUT, Flange Whizlock, 5/16-18
6	1960373	1	CAPSCREW, Taptite, 5/16-18 x 1
7	1700095	1	WIRE ASSY. (Black)
8	1700094	1	WIRE ASSY. (Red)
9	1605751	1	CONNECTOR, Wire, Self-Stripping
10	1679969	1	HORN BUTTON ASSY. (Included in Ref. No. 11)
11	1700643	1	HORN & BUTTON ASSY. (Incl. Ref. Nos. 1 & 10)



Turbo Collector (42" & 48" Mowers)

Ref. No.	Part No.	Qty.	Description
1	1706630	1	STRIP, Reinforcement, Blower Housing
2	1923341	9	SCREW, Truss Hd., 1/4-20 x 5/8
3	1927557	6	NUT, Flange Lock, 5/16-18
4	1665982	4	BEARING, Retainer
5	108202	2	BEARING
6	933988	6	PUSHNUT, 5/16
7	1706650	1	FAN HOUSING & HINGE ASSY. (Inc. Ref. Nos. 32, 53 & 54)
8	1678994	1	BAFFLE, Fan Housing
9	1930641	10	NUT, Hex, Nylon Lock, 1/4-20
10	1706631	1	FAN ASSY., 5 Blades
11	960403	1	KEY
12	1921971	2	CAPSCREW, Hex, 3/8-16 x 1-3/4
13	1706637	1	PLATE ASSY.
14	1917372	2	NUT, Hex, Full 5/16-18
15	1917356	3	LOCKWASHER, 5/16
16	1919381	3	WASHER, Plain (Qty. 4 used on tractor mounted units)
17	1679105	2	STOP, Belt
18	1928698	2	NUT, Hex Jam Lock, 5/16-18
19	1927429	5	SCREW, Tapbte, 1/4-20 x 5/8
20	1960151	2	WASHER, 1/4
21	1675339	2	SPACER
22	1678676	1	BRACKET, Arbor
23	1678306	1	STOP, Belt
24	1924940	7	WASHER, Plain, 13/32
25	1931334	1	CARRIAGE BOLT, 5/16-18 x 7/8
26	1960114	2	WASHER (As Required)
27	1706634	1	PULLEY, Driven
28	1928691	1	SETSCREW, Sq. Hd., 5/16-18 x 3/8
29	1927120	1	CAPSCREW, Hex, 7/16-14 x 2-1/4
30	1678609	1	PULLEY ASSY.
31	1933689	2	CAPSCREW, Hex, 5/16-18 x 1-1/2
32	1700259	1	DECAL, Danger, Blower
33	1678646	1	BAFFLE, Discharge
34	1916950	1	NUT, Hex, Full, 3/8-16

See pages 42 & 43 for Ref Nos. 35-65.






Turbo Collector (42" & 48" Mowers)

Ref. No.	Part No.	Qty.	Description
35	1916965	1	LOCKWASHER, 3/8
36	1701095	1	STOP, Belt
37	1708029	1	PULLEY, Idler
38	1679554	1	SPRING, Tension
39	1700861	1	IDLER ARM ASSY.
40	1666114	1	SPACER
41	1700415	1	BELT, Turbo
42	1930645	1	NUT, Hex, Flange Lock, 3/8-16
43	1931333	5	CARRIAGE BOLT, 5/16-18 x 3/4
44	1678811	1	PLATE, Flange, Blower Housing
45	1960273	1	CARRIAGE BOLT, 5/16-18 x 2-1/4
46	1930642	1	NUT, Flange Lock, 1/4-20
47	1679164	1	CUP
48	1679163	1	NUT ASSY., Wing
49	1923362	1	NUT, Hex, Full, Lock, 5/16-18
50	1672689	1	"S" HOOK
51	1921319	1	WASHER, Plain, 9/32
52	1921961	1	CAPSCREW, Hex Hd., 1/4-20 x 1-1/4
53	1679207	1	HINGE
54	1673450	6	RIVET, Pop
55	1920283	1	WASHER, Special
56	1960044	1	WASHER, Plain
57	1675795	1	SPACER
58	1704960	1	COVER ASSY., Pulley
59	1679165	1	MOLDING
60	1930627	1	NUT, Hex, Full Lock, #10-32
61	1679204	1	"S" HOOK
62	1679205	1	STRAP
63	1960096	1	WASHER, Special
64	1930531	1	SCREW, Truss, #10-32 x 1/2
65	1960272	1	CAPSCREW, Hex 5/16-18 x 5-1/2 (used on tractor mounted units only)

See pages 40 & 41 for Ref. Nos. 1-34.



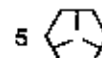
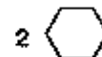
**TORQUE SPECIFICATIONS FOR
STANDARD MACHINE HARDWARE
TOLERANCE $\pm 20\%$**

SIZE	SAE GRADE #2 		SAE GRADE #5 		SAE GRADE #8 	
	<u>In./Lbs.</u> Ft./Lbs.	Nm.	<u>In./Lbs.</u> Ft./Lbs.	Nm.	<u>In./Lbs.</u> Ft./Lbs.	Nm.
8-32	19	2.1	30	3.4	41	4.6
8-36	20	2.3	31	3.5	43	4.9
10-24	27	3.1	43	4.9	60	6.8
10-32	31	3.5	49	5.5	68	7.7
1/4-20	66	7.6	8	10.9	12	16.3
1/4-28	76	8.6	10	13.6	14	19.
5/16-18	11	15.	17	23.1	25	34.
5/16-24	12	16.3	19	25.8	25	34.
3/8-16	20	27.2	30	40.8	45	61.2
3/8-24	23	31.3	35	47.6	50	68.
7/16-14	30	40.8	50	68.	70	95.2
7/16-20	35	47.6	55	74.8	80	108.8
1/2-13	50	68.	75	102.	110	149.6
1/2-20	55	74.8	90	122.4	120	163.2
9/16-12	65	88.4	110	149.6	150	204.
9/16-18	75	102.	120	163.2	170	231.2
5/8-11	90	122.4	150	204.	220	299.2
5/8-18	100	136.	180	244.8	240	326.4
3/4-10	160	217.6	260	353.6	386	525.
3/4-16	180	244.8	300	408.	420	571.2
7/8-9	140	190.4	400	544.	600	816.
7/8-14	155	210.8	440	598.4	660	897.6
1-8	220	299.2	580	788.8	900	1,224.
1-12	240	326.4	640	870.4	1,000	1,360.

NOTE:

1. These torque values are to be used for all hardware excluding: locknuts, self-tapping screws, thread forming screws, sheet metal screws and socket head setscrews.
2. Recommended seating torque values for locknuts:
 - a. For prevailing torque locknuts - use 65% of grade 5 torques.
 - b. For flange whizlock nuts (and screws) - use 135% of grade 5 torques.
3. Unless otherwise noted on assembly drawings all torque values must meet this specification.

**BOLT HEAD MARKING
S.A.E. GRADE:**



SIMPLICITY MANUFACTURING, INC.
500 N. Spring St., P.O. Box 997
Port Washington, WI USA 53074-0997

TP-1118-04
PRINTED IN U.S.A.
10/93 - CCI