

*Parts Manual for*

# **SNAPPER®**

## **21" STEEL DECK EASY LINE SWIVEL WHEEL WALK MOWER**



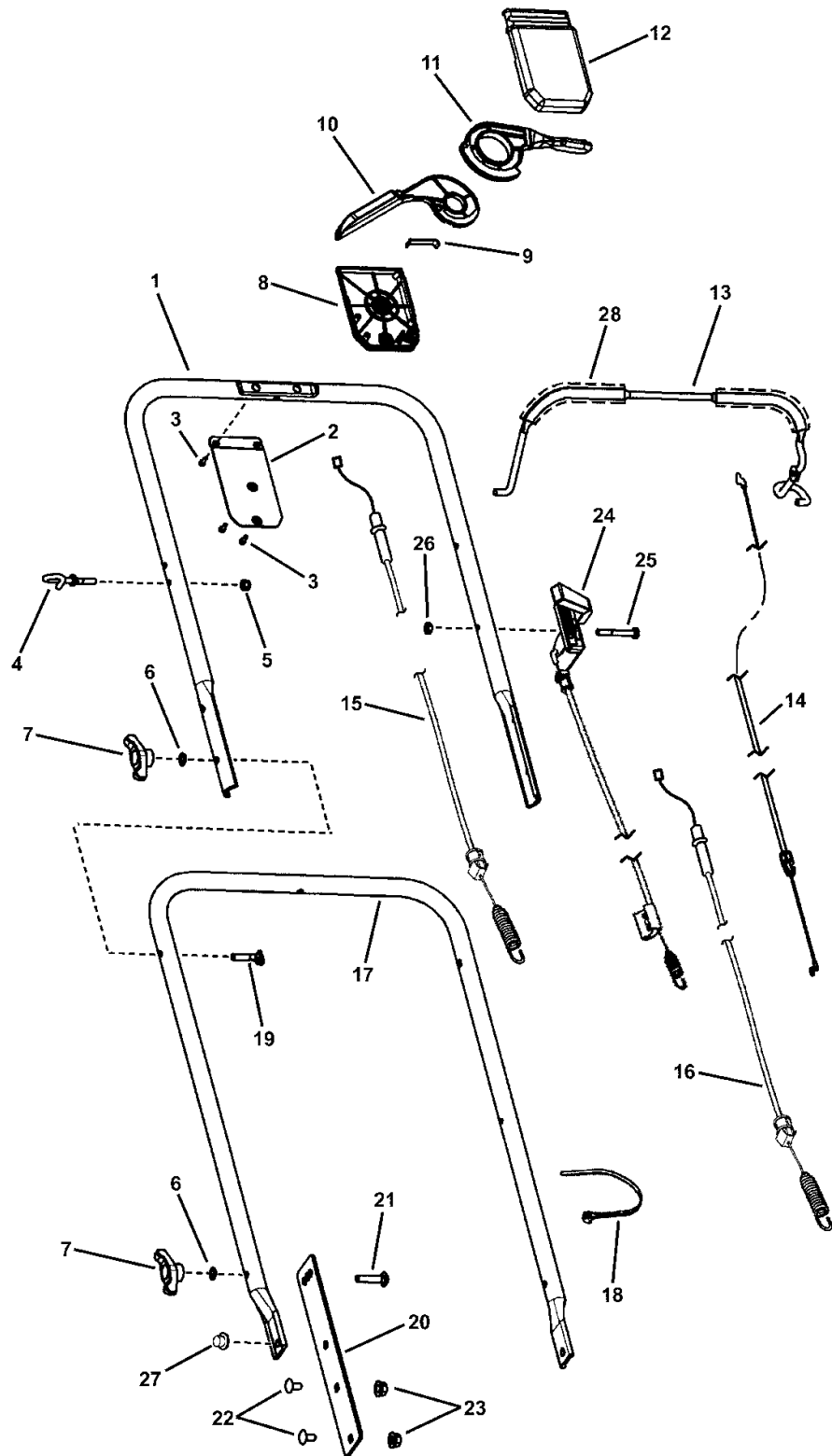
<b>MODEL</b>
<b>SPV21S</b>
<b>SPV211S</b>

**SNAPPER®** McDonough, GA, 30253 U.S.A.



<b>PAGE</b>	<b>GROUP</b>
4	HANDLES & CONTROLS
6	GUARDS AND COVERS
8	FRONT WHEELS
10	REAR WHEELS
12	REAR DECK BRACKETS & IDLER ARM
14	TRANSMISSION
16	ENGINE AND BLADE
18	BAGGING COMPONENTS
20	DECALS

# HANDLES & CONTROLS

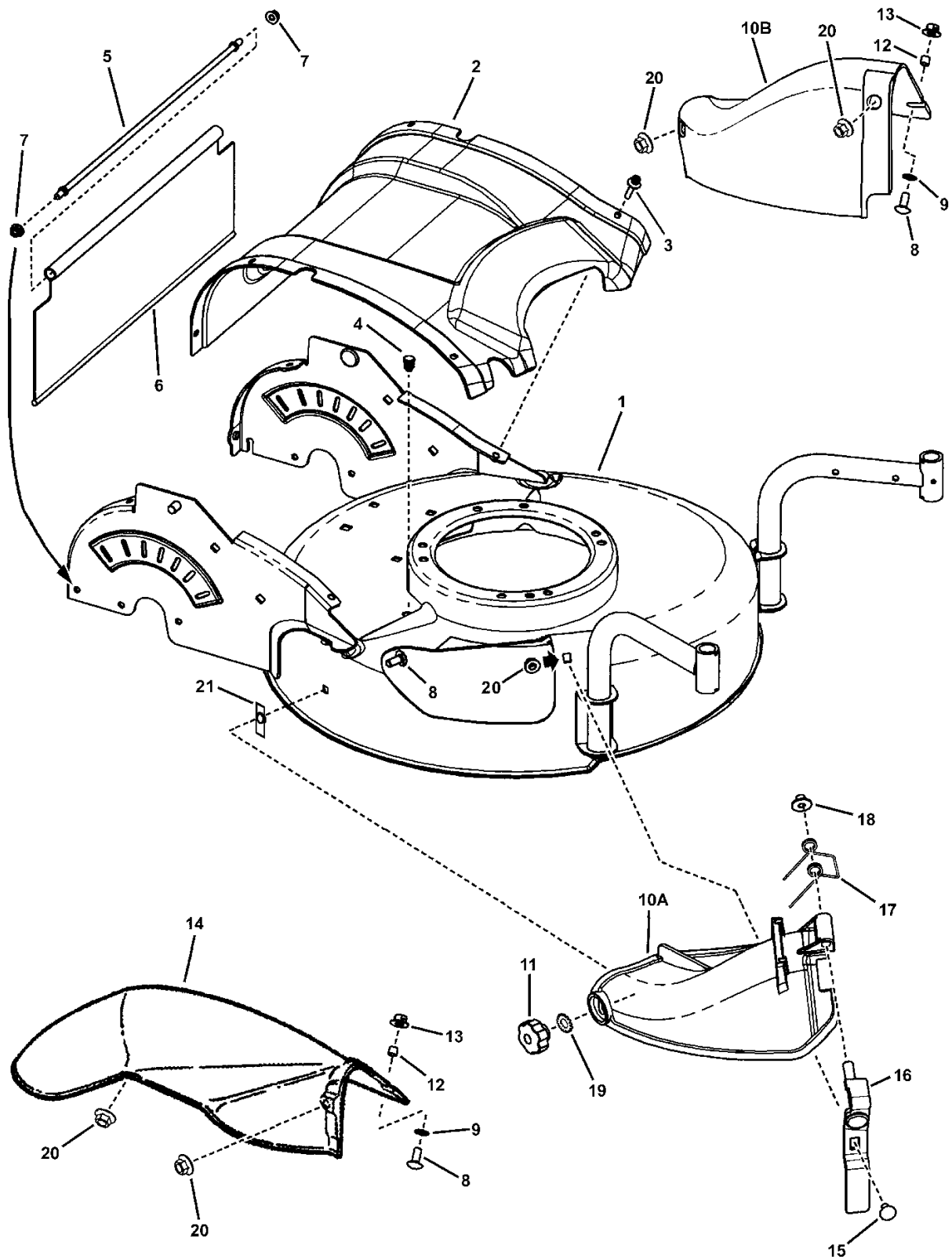


## HANDLES & CONTROLS

Item	Part No	Qty	Description	Note
1	7078247	1	HANDLE, Upper, Flat	<i>black textured finish</i>
2	7300130	1	PLATE, Control Panel	
3	7100225	4	SCREW, #8-16 Recessed Pan Head (Torxplus)	
4	7028488	1	GUIDE, Rope	<i>with 1/4-20 threads</i>
5	7076978	1	NUT, 1/4-20 Hex Nyloc	
6	7090391	4	WASHER, 5/16 Internal Tooth Lock	
7	7035744	4	KNOB, 5/16-18 Wing (Black)	
7	M720727	4	KNOB, 5/16-18 Wing (Black)	<i>Briggs part # 71294</i>
8	7100069	1	ASSY, Control Head Variable Speed (Includes 8, 9, 10, 11, 12, 15 & 16)	
9		1	SPRING STEEL	<i>Not Available Individually</i>
10		1	CLUTCH LEVER, Silver	<i>Not Available Individually</i>
11		1	ASS'Y., Speed Lever/Friction Material	<i>Not Available Individually</i>
12		1	TOP BOX, Variable Speed- Black	<i>Not Available Individually</i>
13	7078248	1	BAIL, Brake	<i>black textured finish</i>
14	7100074	1	CABLE, Zone Control	
15	7100263	1	CABLE, Clutch	
16	7100264	1	CABLE, Speed	<i>used on some early units</i>
17	7078246	1	HANDLE, Lower	<i>black textured finish</i>
18	7024649	2	WIRE TIE, 11 Inch Black Nylon	
19	7091189	2	BOLT, 5/16-18 x 2" Curved Head Square Neck GR 2	
20	7300103	2	BRACKET, Lower Handle	<i>black textured finish</i>
21	7091612	2	BOLT, 5/16-18 x 1-1/2" Round Head Square Neck	
22	7090799	7	BOLT, 5/16-18 x 5/8" Round Head Short Square Neck Carriage	
23	7091601	4	NUT, 5/16-18 Hex Flange Lock	
24	7072023	1	CONTROL, Swivel Wheel Latch 56.5 (LH Outside)	
25	7090505	1	SCREW, 1/4-20 x 2" Hex Head Cap, GR 5	
26	7090372	3	NUT, 1/4-20 Hex Center Lock	
27	7091135	2	PUSHNUT, 3/8"	
28	7100632	2	FOAM GRIP, 7"	

### Footnotes:

# GUARDS AND COVERS

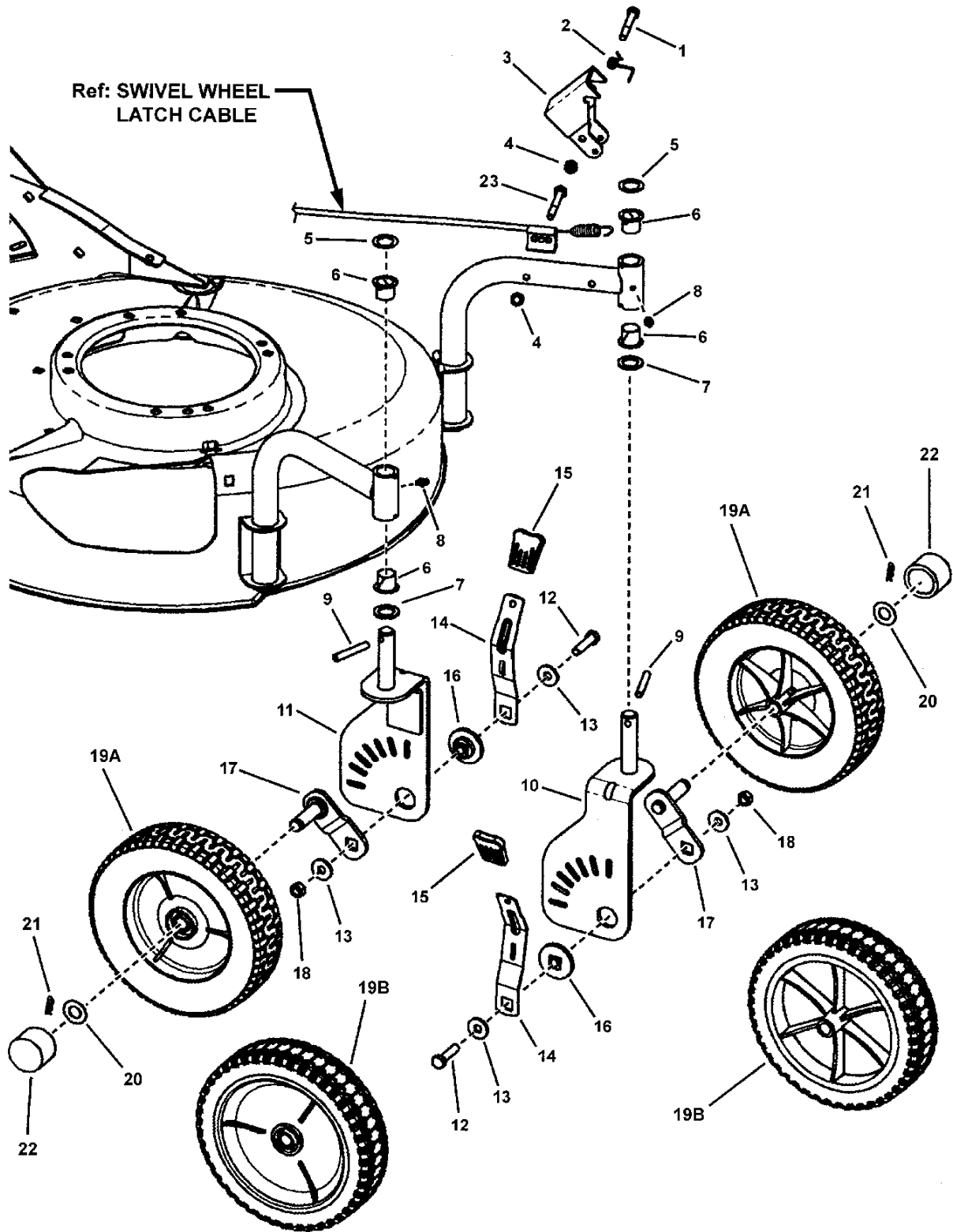


## GUARDS AND COVERS

Item	Part No	Qty	Description	Note
1	7400014	1	WELDMENT, 21" Deck Swivel Wheel	
2	7100001	1	REAR COVER, Belt/Transmission	
3	7100059	6	RIVET, Plastic, Fastener	
4	7046780	2	PLUG, Hole (Polyethylene)	
5	7078225	1	ROD, Trail Shield	<i>1/4-20 thread- both ends</i>
6	7078272	1	SHIELD, Trail	
7	7091584	2	NUT, 1/4-20 Hex Flange Lock	
8	7090001	2	BOLT, 5/16-18 x 3/4" Short Square Neck Carriage, GR 5	
9	7011791	1	BOLT RETAINER, 5/16- Black	
10A	7100243	1	COVER, Mulching, No Tools	
10B	7029149	1	COVER, 21 Deck Recycling	
11	7100516	1	KNOB, Fluted (5/16-18 thread)	
12	7024340	1	SPACER, .316 x .375 x .300/.310	
13	7090951	1	NUT, 5/16-18 Large Flange Hex Center Lock	
14	7042965	1	CHUTE, 21 Side Discharge	
15	7900015	1	BOLT, 5/16-18 x 5/8" Short Square Neck Carriage, GR5	<i>modified shoulder</i>
16	7400137	1	WELDMENT, Hinge Pivot	
17	7100253	1	SPRING, Torsion, Mulching Cover	
18	7091135	1	PUSHNUT, 3/8"	
19	7090189	1	WASHER, 5/16" Internal/External	
20	7091070	2	NUT, 5/16-18 Hex Flange Lock	
21	7900028	1	NUT, 5/16-18 Speed	<i>Shakeproof# FN-614020-1-50)</i>

### Footnotes:

# FRONT WHEELS



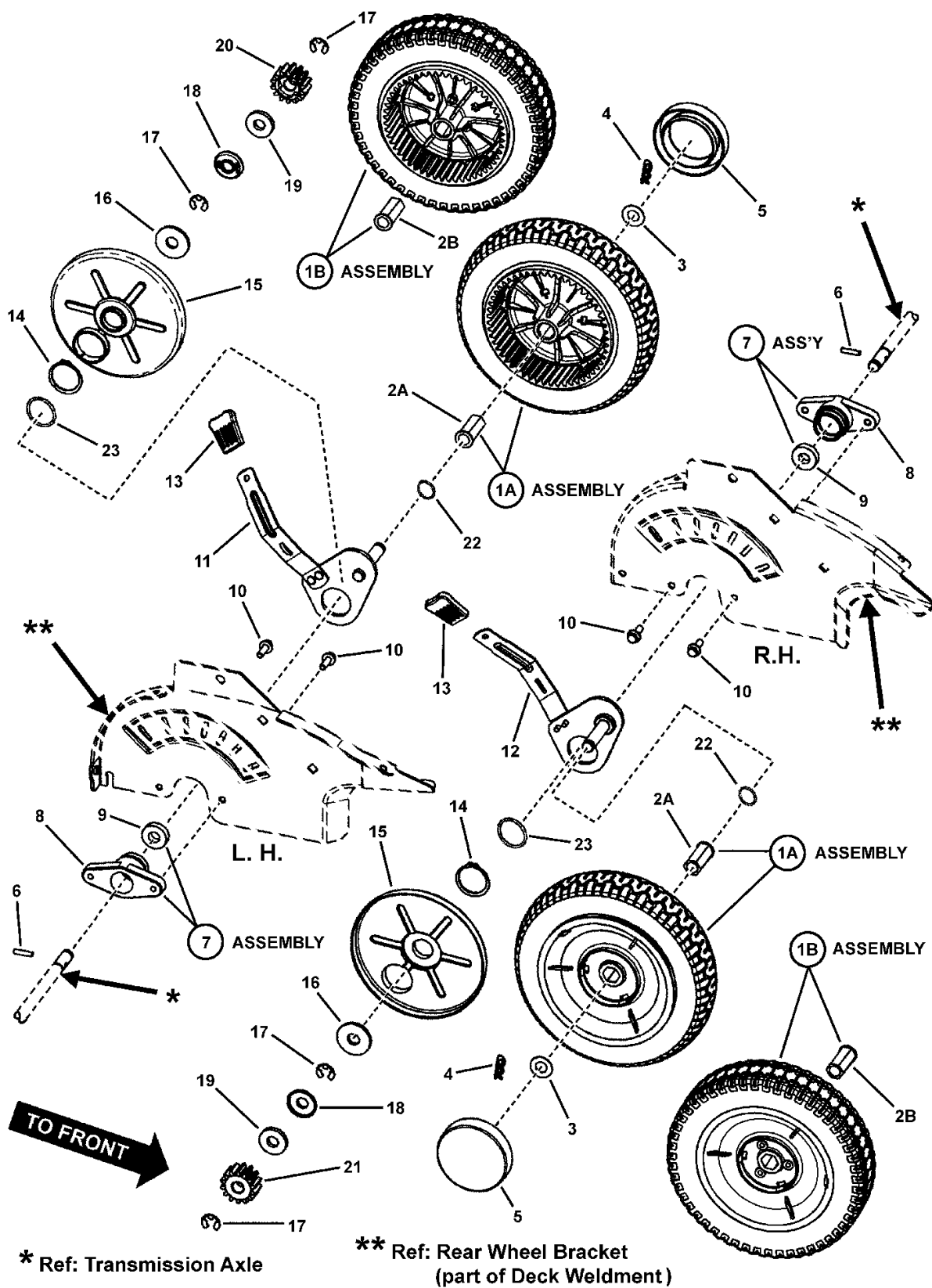


## FRONT WHEELS

Item	Part No	Qty	Description	Note
1	7091256	1	SCREW, 1/4-20 x 2-1/4" Hex Head Cap, GR 5	
2	7046668	1	SPRING, Torsion	
3	7300171	1	BRACKET Swivel Wheel Lock	
4	7090372	2	NUT, 1/4-20 Hex Center Lock	
5	7092021	2	WASHER, .64 x .99 x .025 Flat	
6	7046628	4	NYLINER, 5/8	
7	7092022	2	WASHER, .64 x .99 x .075 Flat	
8	7013864	2	LUBE FITTING, 3/16"	
9	7014106	2	ROLL PIN, 1/4 x 1-3/4"	
10	7400068	1	WELDMENT, Swivel Wheel Brkt. LH	
11	7400070	1	WELDMENT, Swivel Wheel Brkt. RH	
12	7091527	2	SCREW, 5/16-18 X 1-1/4" Hex Head Cap, GR 5	
13	7900022	4	WASHER, .875 x .327 x .090 Flat	
14	7100251	2	LEVER, Height Adjust, Swivel Wheel	
15	7100633	2	GRIP, Height Latch	Was 7027702
16	7100249	2	SPACER, Swivel Wheel Pivot	
17	7500101	2	ASSEMBLY, Axle Arm/Stud	
18	7091575	2	NUT, 5/16-18 Hex Center Lock	
19A	7100250	2	WHEEL, Front 8 x 2", LS Tread, 1-3/8" Hub Length, (Swivel Wheel)	
19B	7101127	2	WHEEL, Front 8 x 2", Double Bar II Tread, 1-3/8" Hub Length	
20	7100585	2	WASHER, Shim, .875 x .531 x .060	
21	7091193	2	COTTER, Hairpin	
22	7100088	2	HUB CAP, 1-3/8" Diameter	black
23	7090505	1	SCREW, 1/4-20 x 2" Hex Head Cap, GR 5	

### Footnotes:

# REAR WHEELS



## REAR WHEELS

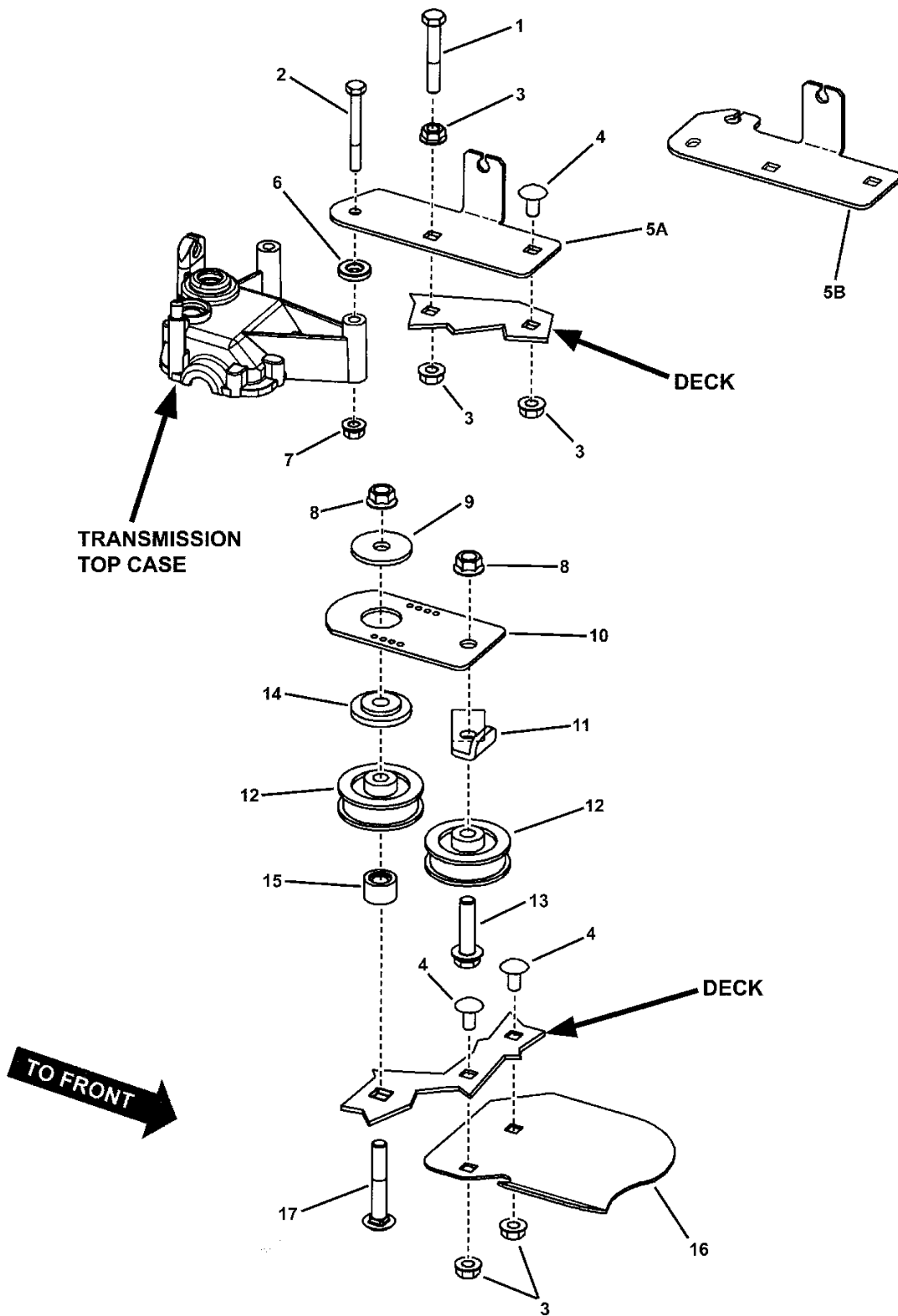
Item	Part No	Qty	Description	Note
1A	7100184	2	* ASSY., 9 x 2" Gear Wheel, LS Tread & P. M. Bushing	<i>gray rim</i>
1B	7101104	2	** ASSY., 9 x 2" Gear Wheel, Double Bar II Tread & Nylon Bushing	
2A	7073618	1	BUSHING, Wheel (powdered metal)	<i>part of item 1A</i>
2B	7024541	1	BUSHING, Wheel (nylon)	<i>part of item 1B</i>
3	7091192	2	WASHER, 1/2" Flat	
4	7091193	2	COTTER, Hairpin	
5	7100114	2	HUB CAP, 3-1/4" Diameter, Black	
6	7024749	2	PAWL, 3/16" O.D.	
7	7500041	2	ASSEMBLY, Axle Bearing	<i>incl. items 8 &amp; 9</i>
8	7078214	1	HOUSING, Axle Bearing	
9	7078243	1	BALL BEARING, Axle	<i>.50 I.D. x 1.125 O.D. x .3125 thick</i>
10	7090699	4	BOLT, 1/4-20 x 3/4" Hex Flange Lock	
11	7078235	1	ASSEMBLY, Axle Arm, Left Rear	
12	7078236	1	ASSEMBLY, Axle Arm, Right Rear	
13	7100633	2	GRIP, Height Latch	<i>replaces 7027702 (voided)</i>
14	7900010	2	SNAP RING, 1-3/8"	<i>Truarc 5100-137</i>
15	7078269	2	SHIELD, Dust	
16	7091194	2	WASHER, .531 x 1.50 x .134	<i>or 7100644 (WASHER, .531 x 1.25 x .063)</i>
17	7014341	4	RETAINING RING	<i>Waldes 5133-50</i>
18	7026478	2	RETAINER, Pinion Seal	
19	7026479	2	SEAL, Pinion (Felt)	
20	7024550	1	PINION, LH Drive	
21	7024549	1	PINION, RH Drive	
22	7100627	2	O-RING, Buna N, 018	
23	7100626	2	O-RING, Buna N, 124	

### Footnotes:

NOTE: \* 7100184 includes Tire & Rim ass'y. (7100014) & Bushing (7073618).

NOTE: \*\* 7101104 includes Tire & Rim ass'y. (7101126) & Bushing (7024541).

# REAR DECK BRACKETS & IDLER ARM

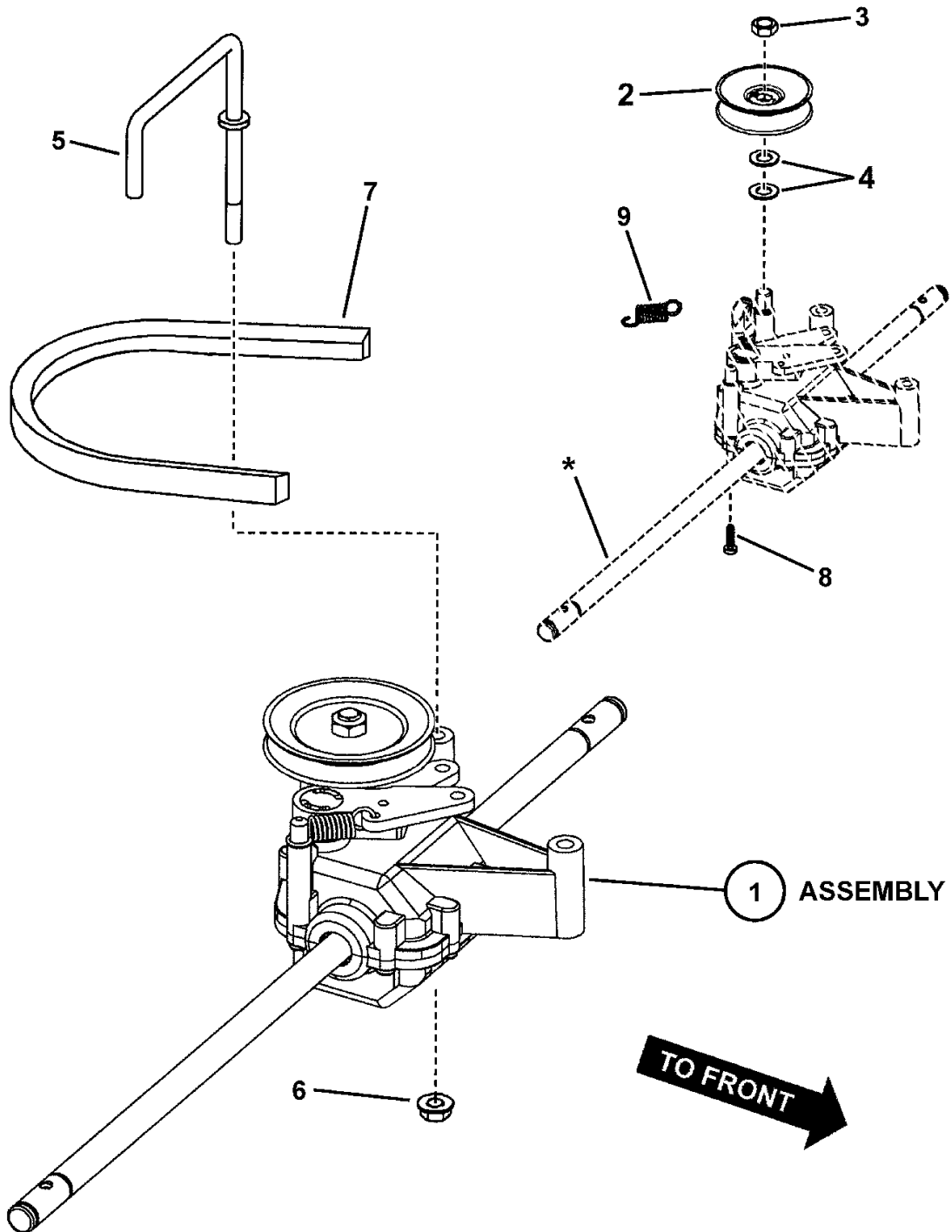


## REAR DECK BRACKETS & IDLER ARM

Item	Part No	Qty	Description	Note
1	7027174	1	SCREW, 5/16-18 x 2" Hex Head Cap, GR 5	
2	7091256	1	SCREW, 1/4-20 x 2-1/4" Hex Head Cap, GR 5	
3	7091601	3	NUT, 5/16-18 Hex Flange Lock	
4	7090799	3	BOLT, 5/16-18 x 5/8" Round Head Short Square Neck Carriage	
5A	7300047	1	BRACKET, Transmission Mounting	
5B	7300494	1	BRACKET, Transmission Mounting	
6	7100122	1	SPACER, 3/8 x 13/16 x 5/32	
7	7091545	1	NUT, 1/4-20 Hex Top Lock Flange	
8	7091619	2	NUT, 3/8-16 Hex Flange Lock	
9	7091331	1	WASHER, 13/32 x 1-1/2 x 1/8" Flat	
10	7300020	1	IDLER ARM, Belt Drive	
11	7300196	1	BELT GUIDE, Idler	
12	7100856	2	PULLEY, Flat Idler, Plastic	<i>replaces 7078245</i>
13	7090614	1	BOLT, 3/8-16 x 1-1/2" Hex Flange Lock, GR 5	
14	7100062	1	SPACER, Pivot, Belt Idler	
15	7100063	1	SPACER, Idler	
16	7300013	1	SHIELD, Debris	
17	7900009	1	BOLT, 3/8-16 x 2-1/4" Short Square Neck Carriage, GR 5	

### Footnotes:

**TRANSMISSION**



\* Ref: TRANSMISSION, Dog Clutch  
(not a parts sales item)

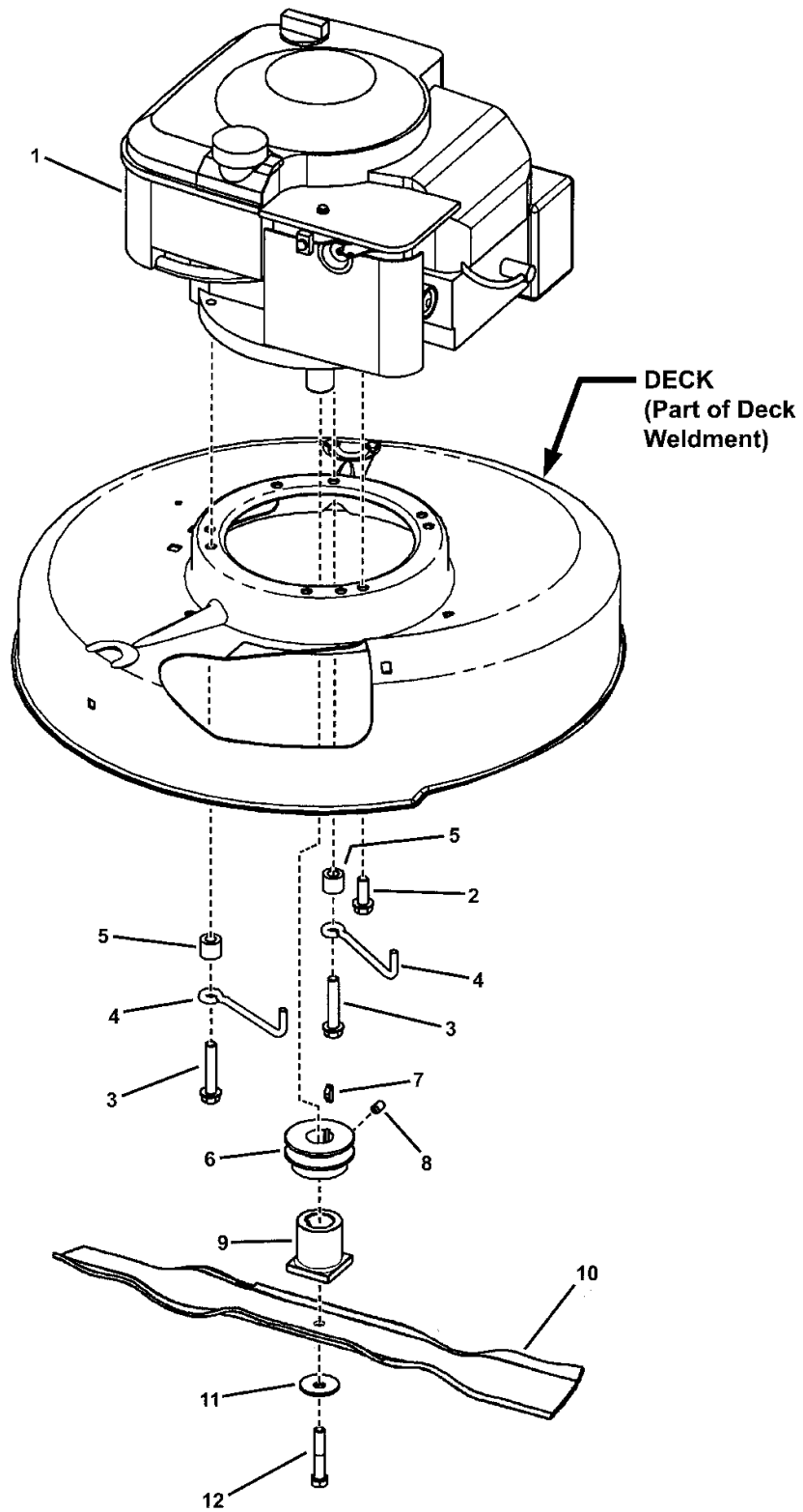
## **TRANSMISSION**

---

<b>Item</b>	<b>Part No</b>	<b>Qty</b>	<b>Description</b>	<b>Note</b>
1	7500103	1	TRANSMISSION, LC Walk, Variable Speed	<i>includes pulley</i>
2	7100240	1	PULLEY, Transmission	
3	1960251	1	NUT, 3/8-16 Hex Center Lock Jam	
4	7012316	2	WASHER, .390 I.D.	
5	7100395	1	BELT GUIDE, Variable Speed	
6	7091545	1	NUT, 1/4-20 Hex Top Lock Flange	
7	7100058	1	* BELT, 3L, Traction Drive	<i>38.125 Nominal O.D.</i>
8	7900032	8	SCREW, 7mm x 1 x .550 AB Point	
9	7100966	1	SPRING, Return, Clutch	

### **Footnotes:**

NOTE: \* Part number is printed on back edge of belt.





## ENGINE AND BLADE

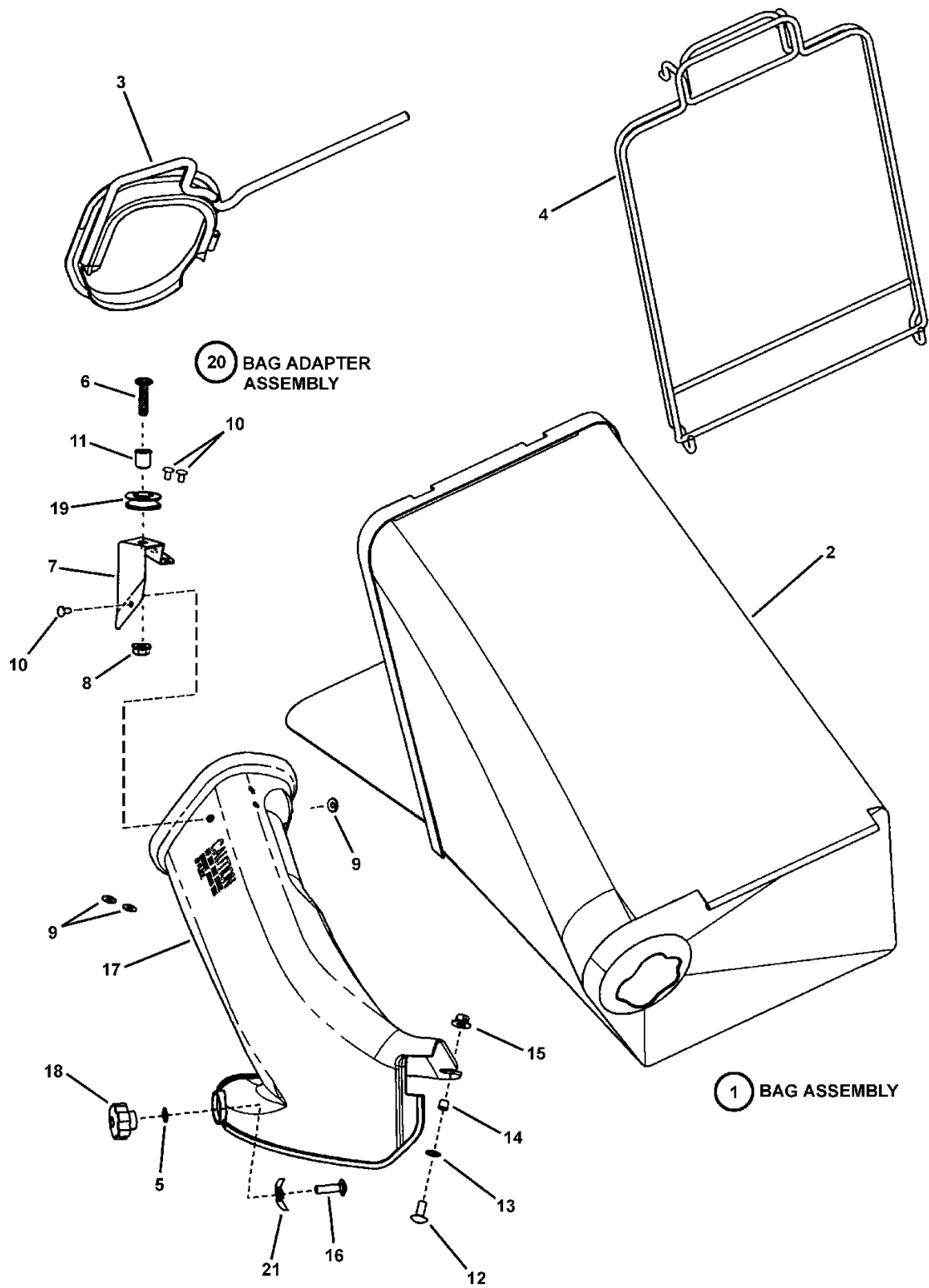
---

Item	Part No	Qty	Description	Note
1		1	* ENGINE, 6.5 HP Quantum Mod. 123K02-0141-E1	
2	7090324	1	SCREW, 3/8-16 x 1" Hex Washer Self-Tap	
3	7091088	2	SCREW, 3/8-16 x 2" Hex Washer Self-Tap	
4	7100022	2	GUIDE, Belt	
5	7200010	2	SPACER, Belt Guide	
6	7100437	1	PULLEY, Engine	
7	7091214	1	KEY, Hi-Pro (#HP-506)	
8	7092086	1	SET SCREW, 5/16-18 x 1/2" Hex Recess	<i>Type A Point (Cup Point)</i>
9	7027423	1	HUB, Blade Drive, 25 MM I.D.	
10	7100242	1	BLADE, Wave, 21" Steel Deck	
11	7012063	1	WASHER, Cone	
12	7090167	1	SCREW, 3/8-24 x 2" Hex Head Cap, GR 5	

### Footnotes:

NOTE: \* Purchase engine parts from engine manufacturer dealer.

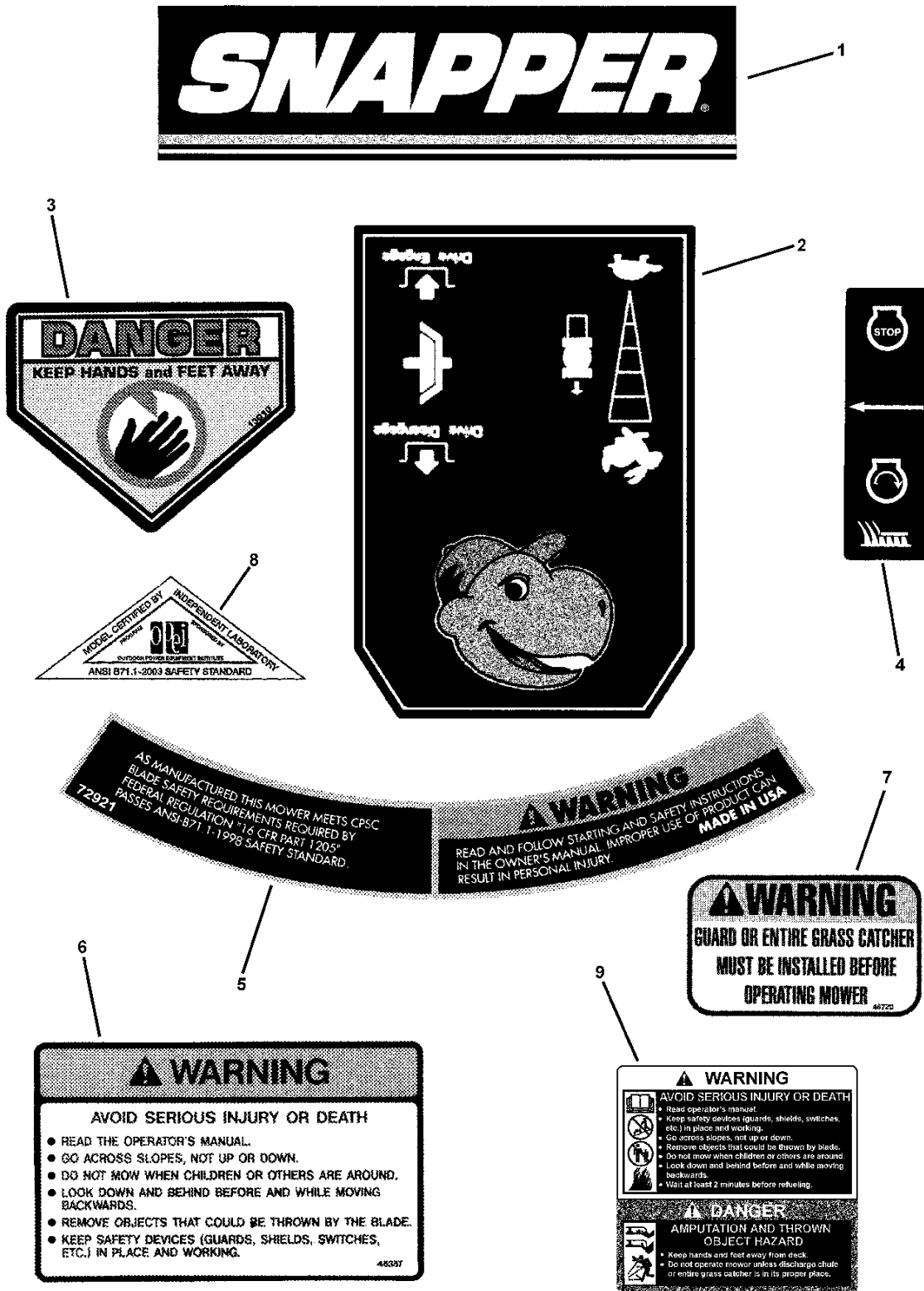
# BAGGING COMPONENTS



## BAGGING COMPONENTS

Item	Part No	Qty	Description	Note
1	7058571	1	BAG ASSEMBLY (Door)	<i>includes items 2 thru 4</i>
2	7075765	1	GRASS BAG (Door w/silver letters)	
3	7042489	1	CONNECTOR, Bag	<i>(weldment)</i>
4	7051906	1	ASSEMBLY, Bag Wire (12") 21S	
5	7090189	1	WASHER, 5/16" Internal/External	
6	7091984	1	SCREW, 5/16-18 x 1-1/4" Pan Head Machine	
7	7047082	1	BRACKET, Rope Pulley	
8	7091070	1	NUT, 5/16-18 Hex Flange Lock, GR 5	
9	7072107	3	WASHER, 15/32" Flat	
10	7013860	3	RIVET	
11	7012306	1	BUSHING, Flange, .381 x .625 x .62	
12	7090001	1	BOLT, 5/16-18 x 3/4" Short Square Neck Carriage, GR 5	
13	7011791	1	BOLT RETAINER, 5/16- Black	
14	7024340	1	SPACER, .316 x .375 x .300/.310	
15	7090951	1	NUT, 5/16-18 Large Flange Hex Center Lock	
16	7091833	1	SCREW, 5/16-18 x 5/8" Cross Recess Pan Head	
17	7047081	1	ADAPTER, Bag	
18	7100516	1	KNOB, Fluted (5/16-18 thread)	
19	7024228	1	PULLEY, Nylon	
20	7058037	1	ASSEMBLY, Bag Adapter	
21	7900028	1	NUT, 5/16-18 Speed	<i>Shakeproof# FN-614020-1-50)</i>

### Footnotes:



## DECALS

---

Item	Part No	Qty	Description	Note
1	1731955	1	DECAL, SNAPPER Logo	
2	7100342	1	DECAL, Control Head, Variable Speed	
3	7013010	1	DECAL, Danger, Cut Finger	
4	7029782	1	DECAL, OPC Bail International Symbol	
5	7072921	1	DECAL, Warning (Deck)	
6	7046357	1	DECAL, Warning 1997	
7	7046720	1	DECAL, Chute/Deflector	
8		1	DECAL, OPEI Walk/Ride	<i>not a service part</i>
9	7100984	1	DECAL, Warning/Danger WBM	
10		1	DECAL, Patent Numbers	<i>not shown; not a service part</i>

### Footnotes:





*Parts Manual for*

# **SNAPPER®**

## **21" STEEL DECK EASY LINE SWIVEL WHEEL WALK MOWER**

IT IS THE POLICY OF BRIGGS & STRATTON CORP TO IMPROVE ITS PRODUCTS WHENEVER IT IS POSSIBLE AND PRACTICAL TO DO SO. WE RESERVE THE RIGHT TO MAKE CHANGES OR ADD IMPROVEMENTS AT ANY TIME WITHOUT INCURRING ANY OBLIGATION TO MAKE SUCH CHANGES ON PRODUCTS

**SNAPPER®** McDonough, GA, 30253 U.S.A.