

Parts Manual for
SNAPPER[®]

32", 36", & 48"
COMMERCIAL MOWERS

MODEL NUMBERS:

W32081

W32121

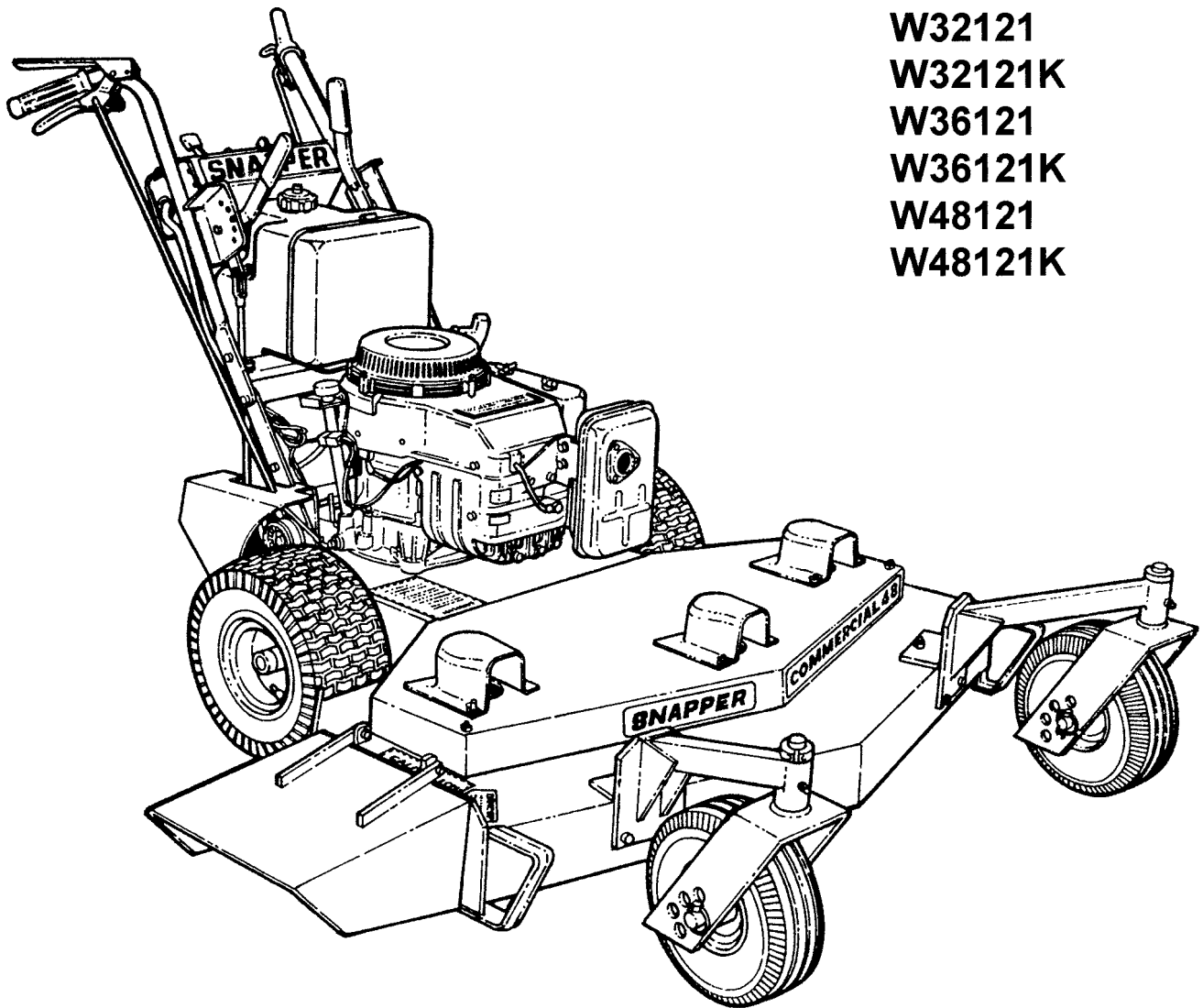
W32121K

W36121

W36121K

W48121

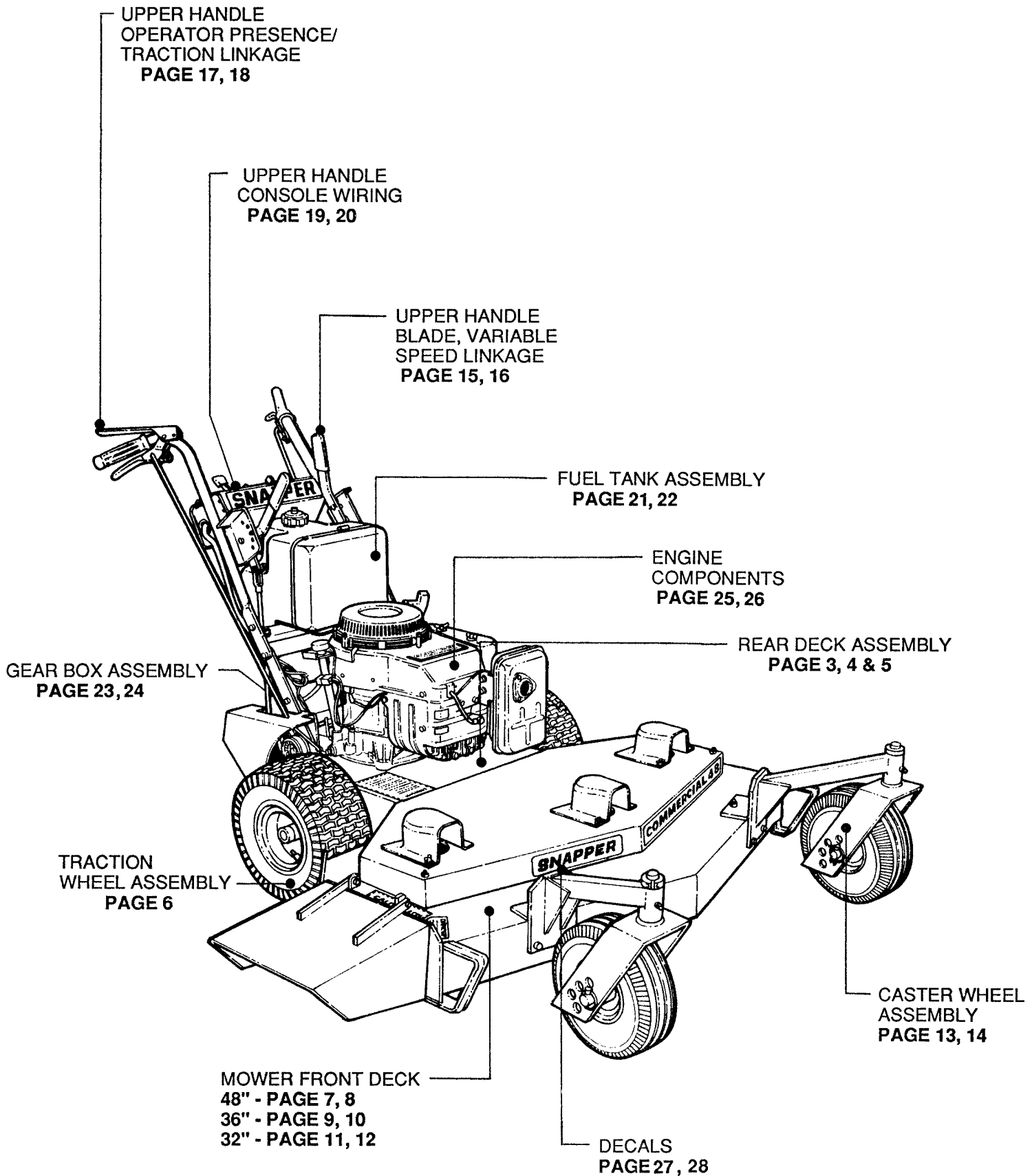
W48121K



MODEL W48121K
ILLUSTRATED

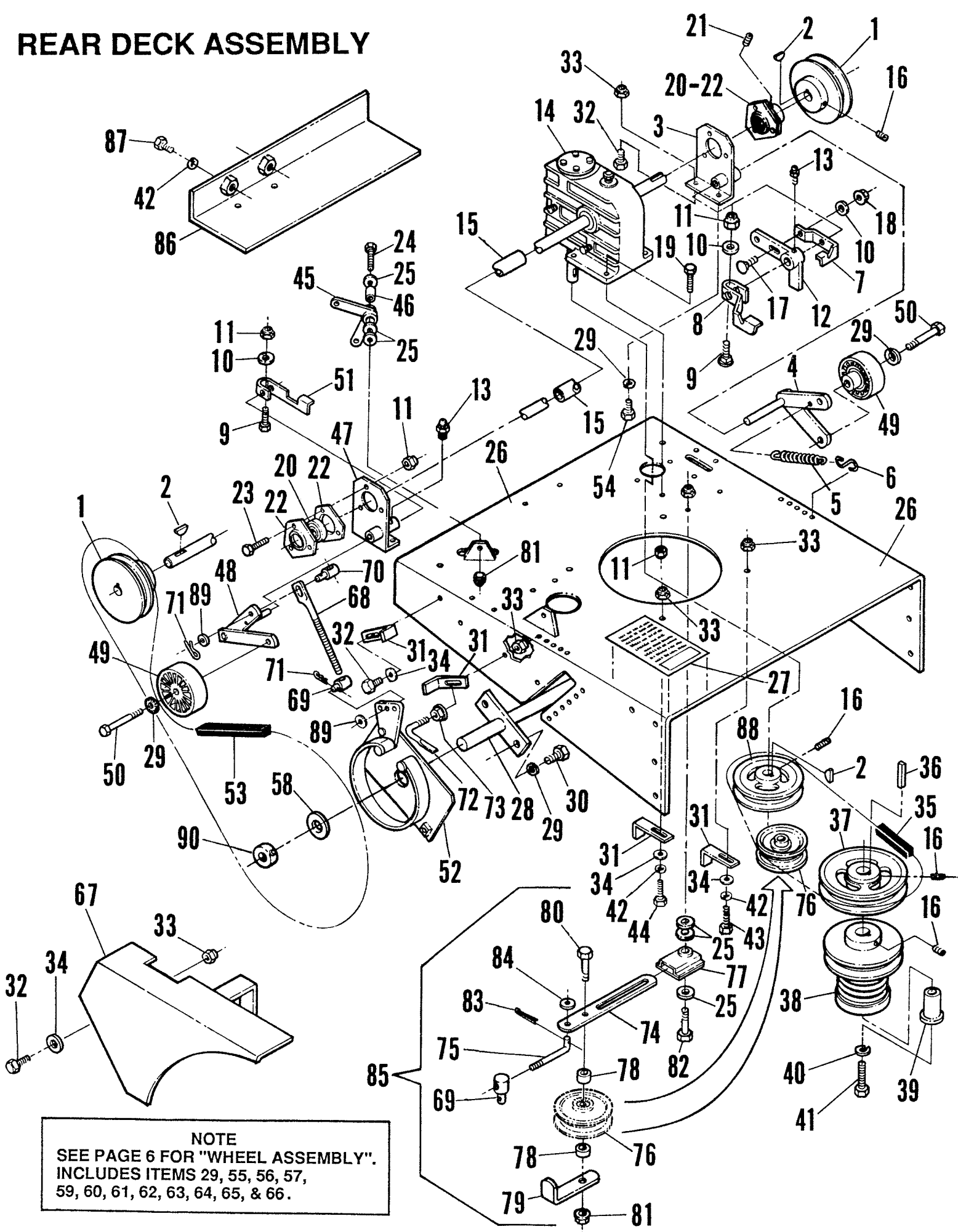
SNAPPER[®] McDonough, GA., 30253 U.S.A.

COMPONENTS LOCATION



© Copyright 1988 by SNAPPER POWER EQUIPMENT. Printed in the United States of America. All rights reserved. Reproduction or use, without express permission, of editorial or pictorial content, in any manner, is prohibited.

REAR DECK ASSEMBLY



REAR DECK ASSEMBLY

ITEM	PART NO.	DESCRIPTION
1	7-7285	PULLEY, Output w/Set Screw (2)
2	1-5894	KEY, Woodruff No. 605 (3)
3	7-7845	BRACKET WELDMENT, Bearing Support
4	7-7860	BELLCRANK, Traction Weldment
5	7-6439	SPRING, Extension (2)
6	7-6487	HOOK, Spring(s) (2)
7	7-7858	TAB, Blade Switch
8	7-7866	TAB, Traction Switch Left
9	9-0078	BOLT, 1/4-20 x 1-1/4" Square Neck Carriage, Grade 2 (2)
10	9-0055	WASHER, 1/4 SAE Flat (3)
11	7-6978	NUT, 1/4-20 Nyloc (12)
12	7-7851	BELLCRANK, Blade Control
13	7-6998	FITTING, 1/4-20 Grease (2)
14	7-6380	BOX, Worm Gear Reduction
15	2-3442	TUBE, Transmission Output Shaft
16	7-6956	SCREW, 5/16-18 x 3/8" Set (9)
17	9-0074	BOLT, 1/4-20 x 3/4" Short Neck Carriage, Grade 5
18	9-0583	NUT, 1/4-20 Hex Flange Lock
19	9-0548	SCREW, 1/4-20 x 1" Hex Head Cap, Grade 5 (4)
20	7-6504	BEARING, Flange w/Set Screws (2)
21	7-6679	SCREW, #10-32 x 1/4" Set Nyloc (4)
22	7-6505	PLATE, Flange (4)
23	9-0072	SCREW, 1/4-20 x 5/8" Hex Head Cap, Grade 5 (6)
24	9-0730	SCREW, 3/8-16 x 1-3/4" Hex Head Cap, Grade 5
25	9-0517	WASHER, 3/8 Std. Flat (6)
26	7-7905	REAR DECK w/Decal
27	1-8956	DECAL, Caution
28	7-6377	WELDMENT, Axle (36" & 48")
--	7-6332	WELDMENT, Axle (32")
*29	9-0118	WASHER, 3/8" Split Lock (15)
30	9-0563	SCREW, 3/8-16 x 1" Hex Head Cap, Grade 5 (4)
31	3-8513	BELT GUIDE (6) new 2-3609
32	9-0206	SCREW, 5/16-18 X 3/4" Hex Head Cap, Grade 2 (9)
33	9-0717	NUT, 5/16-18 Hex Nyloc (14) NUT, M8-1.25 Hex Nyloc
34	9-0692	WASHER, 5/16 Flat (10)
35	7-6498	BELT, Variable Speed (32" & 36")
--	7-6680	BELT, Variable Speed (48" Only)
36	1-7033	KEY, 1/4" Square x 2-1/2"
37	7-6398	PULLEY, w/Set Screws
38	7-6501	PULLEY, Variable Speed w/Set Screws
39	1-7034	SPACER, variable Speed
40	9-0247	WASHER, 7/16 Split Lock
41	2-3388	SCREW, 7/16-20 x 3" Hex Head Cap (Briggs)
--	2-3415	SCREW, M10-1.5 x 75 Hex Head Cap (Kawasaki)
42	9-0187	WASHER, 5/16 Split Lock (6)
43	7-6936	SCREW, 5/16-18 x 1-3/4" Hex Head Cap, Grade 5 (Briggs) (3)
--	7-7692	SCREW, M8-1.25 x 25 Hex Head Self-Tap (Kawasaki) (3)
44	7-6938	SCREW, 5/16-18 x 2-1/4" Hex Head Cap, Grade 5 (Briggs)
--	7-6973	SCREW, M8-1.25 x 50 Hex Head Cap (Kawasaki)
45	7-6420	BELLCRANK
46	7-6453	BUSHING, Powder Metal
47	7-7846	BRACKET, Bearing Support
48	7-7859	BELLCRANK, Traction Right
49	7-7855	PULLEY, Idler (2)
50	9-0164	SCREW, 3/8-24 x 1-1/2" Hex Head Cap, Grade 2 (2)

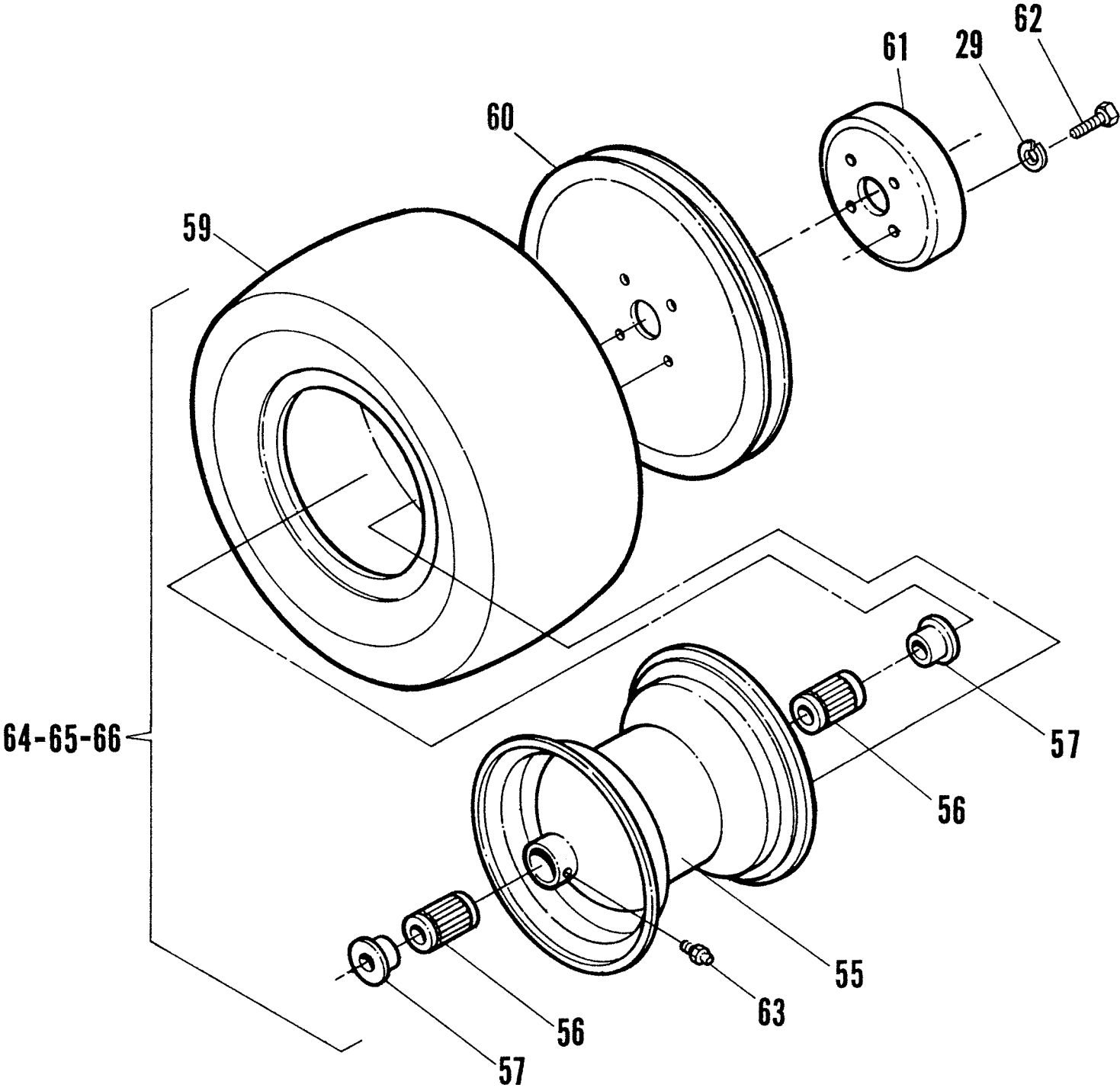
*SEE PAGE 6- "WHEEL ASSEMBLY"

REAR DECK ASSEMBLY (continued)

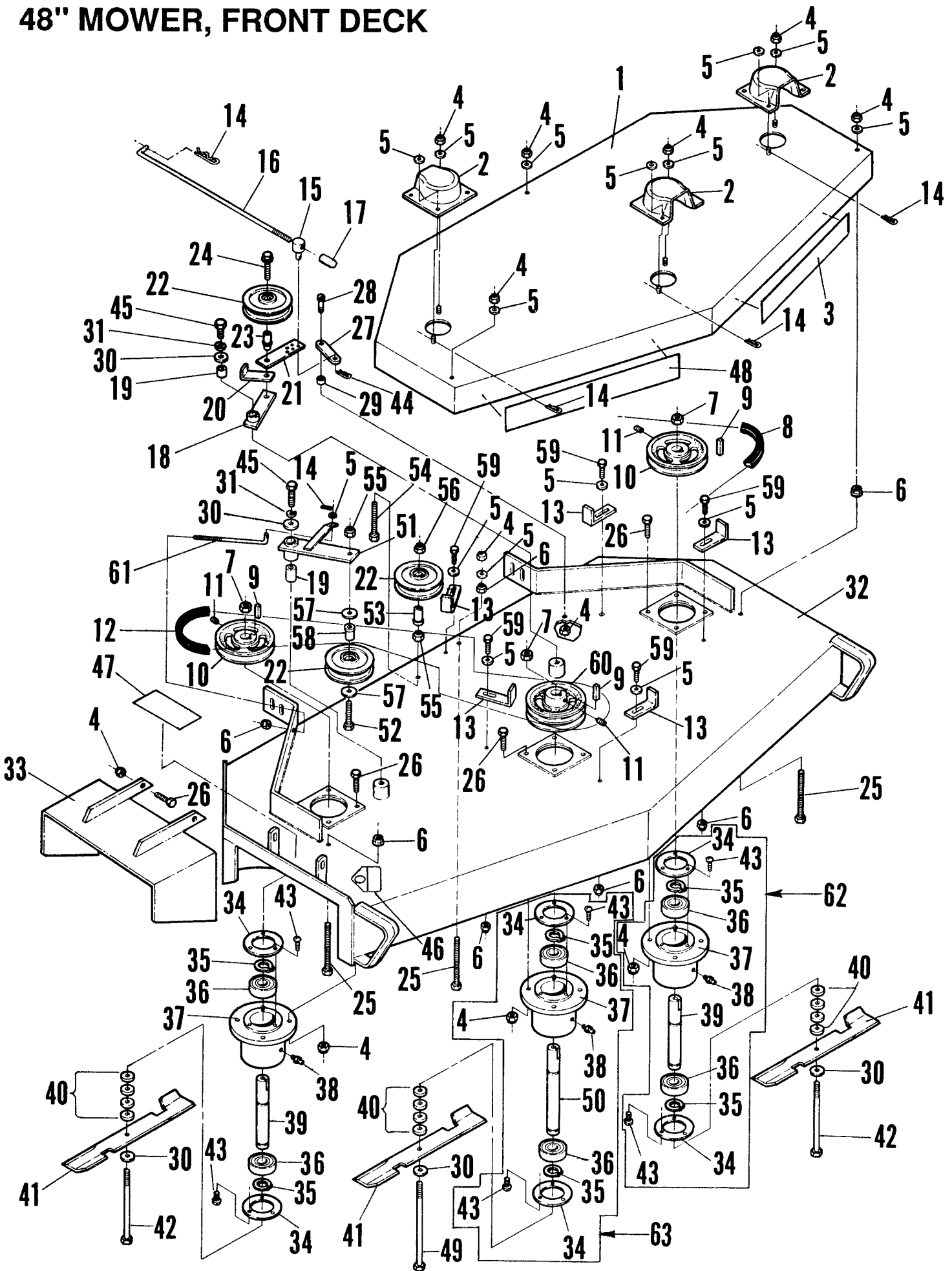
ITEM	PART NO.	DESCRIPTION
51	2-3294	TAB, Traction Switch
52	7-6339	BRAKE ASSEMBLY, Right (shown)
--	7-6340	BRAKE ASSEMBLY, Left
53	7-6497	BELT, Traction (2)
54	9-0134	SCREW, 3/8-16 x 3/4" Hex Head Cap, Grade 5
*55	7-7290	WHEEL, w/Flange Assembly (36" & 48") (2)
--	7-7194	WHEEL, w/Flange Assembly (32") (2)
*56	7-7221	BEARING, Roller (32") (4)
--	7-7313	BEARING, Roller (36" 7 48") (4)
*57	7-7312	BUSHING, Flange (4)
*58	7-6508	SPACER (2)
*59	7-7222	TIRE, 2 Ply Turfmaster (32") (2)
--	7-7310	TIRE, 2 Ply Turfmaster (36" 7 48") (2)
*60	7-6522	SHEAVE (2)
*61	7-6440	DRUM, Brake (2)
*62	7-6942	SCREW, 3/8-24 x 5/8" Hex Head Cap, Grade 5 (8)
*63	7-6998	FITTING, 1/4-28 Grease (2)
*64	7-7195	WHEEL, w/Sheave & Drum Assembly (32") (2)
--	7-7292	WHEEL, w/Sheave 7 Drum Assembly (36" & 48") (2)
		(Includes items 29, 55, 60, 61 & 62)
*65	7-6407	TIRE ASSEMBLY, w/Bearings (36" & 48") (2)
--	7-6335	TIRE ASSEMBLY, w/Bearings (32") (2)
		(Includes items 55, 56, 57 & 59)
*66	7-6336	TIRE ASSEMBLY (32") (2)
--	7-6409	TIRE ASSEMBLY (36" & 48") (2)
		(Includes 29, 60, 61, 62 & 65)
67	7-6368	FENDER, Right (shown)
--	7-6369	FENDER, Left
68	7-6431	LINKAGE, Brake (2)
69	7-6434	SWIVEL, Short (3)
70	7-6486	SWIVEL, Long (2)
71	7-6988	HAIRPIN, #2 Cotter (4)
72	7-6446	SCRAPER (2)
73	9-0585	NUT, 5/16-18 Hex Flange Lock, Grade 5 (2)
74	7-6429	BAR, Slide
75	7-6432	LINKAGE, Variable Speed Adjustment
76	1-9078	PULLEY, Idler w/Bushing
77	7-6374	BRACKET, Slide
78	1-9077	SPACER (1" O.D. x 13/32 I.D. x 3/8") (2)
79	2-3284	GUIDE, Belt
80	9-0796	SCREW, 3/8-16 x 2-1/2" Hex Head Cap, Grade 2
81	9-0613	NUT, 3/8-16 Hex Flange Lock (2)
82	9-0655	SCREW, 3/8-16 x 1-1/2" Hex Head Cap, Grade 5
83	9-0555	PIN, 3/32 x 1/2" Cotter
84	9-0188	WASHER, 5/16 SAE Flat
85	5-7555	SLIDE, Variable Speed Assembly
86	4-7947	SHIELD, Lower Belt
87	9-0209	SCREW, 5/16-18 x 1" Hex Head Cap, Grade 2 (2)
88	7-6397	PULLEY, Transmission w/Set Screws (32" & 36")
--	7-6649	PULLEY, Transmission w/Set Screws (48")
89	7-6531	WASHER, Brake Linkage (6)
*90	7-7000	COLLAR, 7/8" Clamp w/Set Screw (2)

*SEE PAGE 6- "WHEEL ASSEMBLY"

TRACTION WHEEL ASSEMBLY



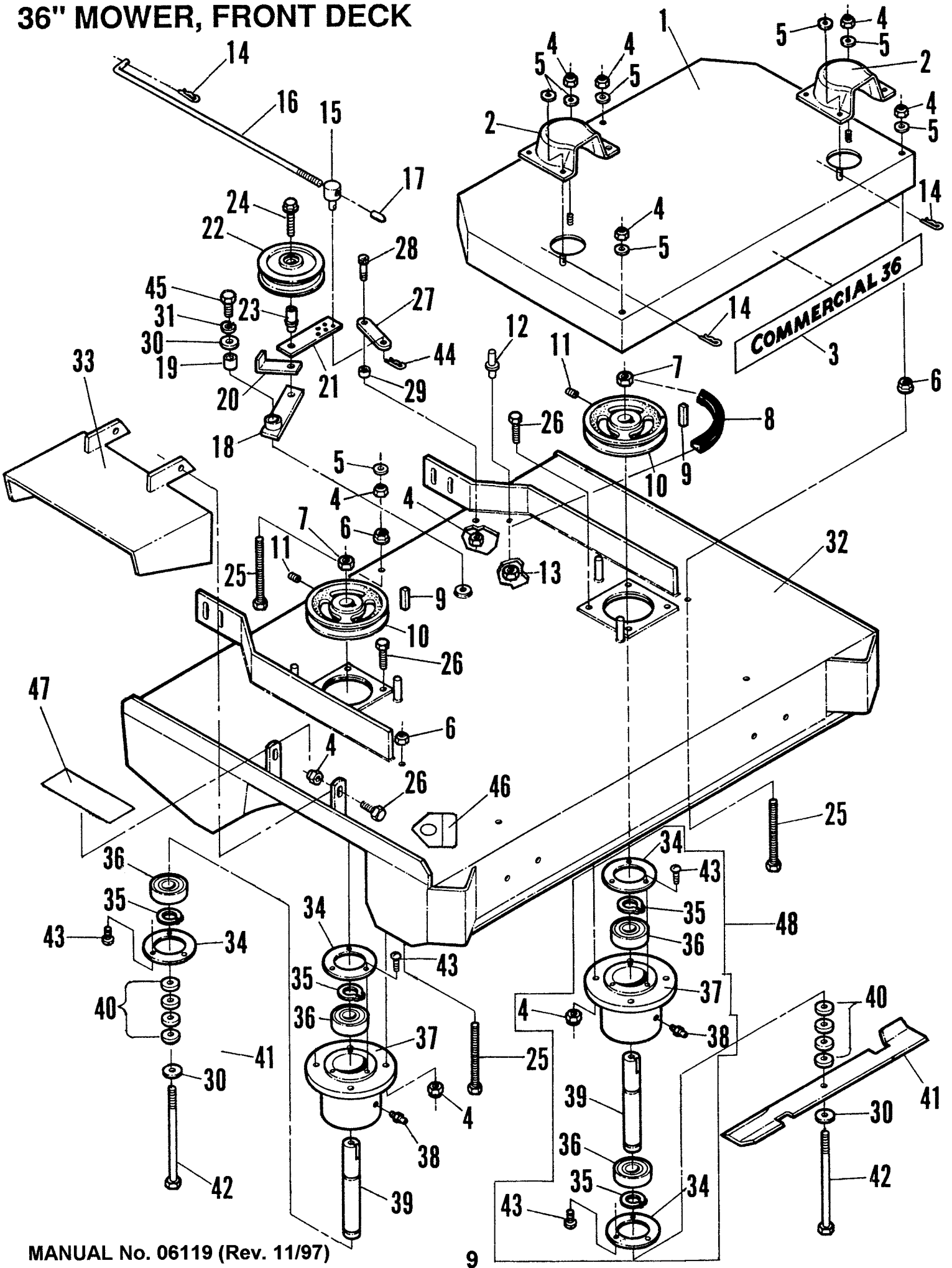
48" MOWER, FRONT DECK



48" MOWER, FRONT DECK

ITEM	PART NO.	DESCRIPTION
1	5-7573	SHIELD, Belt w/Decal 48
2	7-6524	COVER, Spindle (3)
3	1-9105	DECAL, Commercial 48
4	9-0717	NUT, 5/16-18 Hex Nyloc (28)
5	9-0692	WASHER, 5/16 Standard Flat (12)
6	9-0585	NUT, 5/16-18 Hex Flange Lock, Grade 5 (9)
7	7-6980	NUT, 5/8-18 Hex (3)
8	7-6677	BELT, Engine/Blade
9	1-2757	KEY, 1/4 Square x 1-1/4" (3)
10	7-6398	PULLEY, w/Set Screws (2)
11	7-6956	SCREW, Set (6)
12	7-6676	BELT, Blade to Blade
13	3-8513	GUIDE, Belt (6)
14	7-6988	HAIRPIN, #2 Cotter (5)
15	7-7921	SWIVEL
16	7-7940	ROD, Blade Drive
17	2-3328	CAP
18	7-6646	ARM, Idler w/Bushing
19	7-6452	BUSHING (2)
20	7-6681	SNUBBER, Belt
21	7-6686	ARM, Tightening
22	7-6688	PULLEY, Idler (3)
23	7-6694	BUSHING, Flange
24	9-0701	BOLT, 3/8-16 x 1-3/4" Hex Flange Lock, Grade 5
25	7-6969	SCREW, 5/16-18 x 3-1/4" Hex Head Cap (3)
26	9-0209	SCREW, 5/16-18 x 1" Hex Head Cap, Grade 2 (14)
27	7-6687	ARM, Blade Assist
28	7-7001	BOLT, 3/8 x 3/4" Knurled Socket Head Shoulder
29	7-6689	SPACER
30	7-6982	WASHER, 5/8" Flat (5)
31	9-0333	WASHER, 5/8" Split Lock (2)
32	5-7576	DECK, Front 48" w/Decals
33	7-6653	DEFLECTOR, Chute
34	7-6419	CAP, Cutter Housing (6)
35	7-6511	RING, Snap (6)
36	7-6510	BEARING (6)
37	7-7304	HOUSING, Cutter (3)
38	7-6997	FITTING, 1/8 NTP Grease (3)
39	7-7305	SPINDLE, Cutter (2)
40	7-6436	SPACER, Blade (12)
41	7-6675	BLADE, 16-1/4" Ultra High Lift (.164) (3)
--	7-7378	BLADE, 16-1/4" Optional Ultra High Lift (.250) (3)
42	7-6946	SCREW, 5/8-18 x 7-1/2" Hex Head Cap, Grade 5 (2)
43	7-6951	SCREW, #10-24 x 3/8" Pan Head (18)
44	7-6989	HAIRPIN, #4 Cotter
45	9-0767	SCREW, 5/8-11 x 1" Hex Head Cap, Grade 5
46	1-3010	DECAL, CPSC
47	7-6533	DECAL, "Caution"
48	1-8593	DECAL, "SNAPPER"
49	7-6947	SCREW, 5/8-18 x 8" Hex Head Cap, Grade 5
50	7-7376	SPINDLE, Cutter
51	7-6647	ARM, Idler Right w/Bushing
52	9-0588	SCREW, 3/8-16 x 2" Hex Head Cap, Grade 5
53	7-6836	BUSHING, Idler Flange
54	7-6970	BOLT, 3/8-16 x 2-1/2" Hex Head Tap
55	7-6979	NUT, 3/8-16 Hex Nyloc
56	9-0613	NUT, 3/8-16 Hex Flange Lock
57	9-0517	WASHER, 3/8" Flat (2)
58	7-6695	BUSHING, Idler Flange
59	7-6925	SCREW, 5/16-18 x 3/4" Hex Head Cap, Grade 2 (6)
60	7-6648	PULLEY, Double w/Set Screws
--	1-9101	SHEAVE, Taper lock (Replaces 7-6648)
--	2-3381	BUSHING, Sheave (for 1-9101 Sheave)
61	7-6683	ROD, Belt Tension
62	7-6379	ASSEMBLY, Cutter Housing (2)
63	7-6645	ASSEMBLY, Cutter Housing (Center)

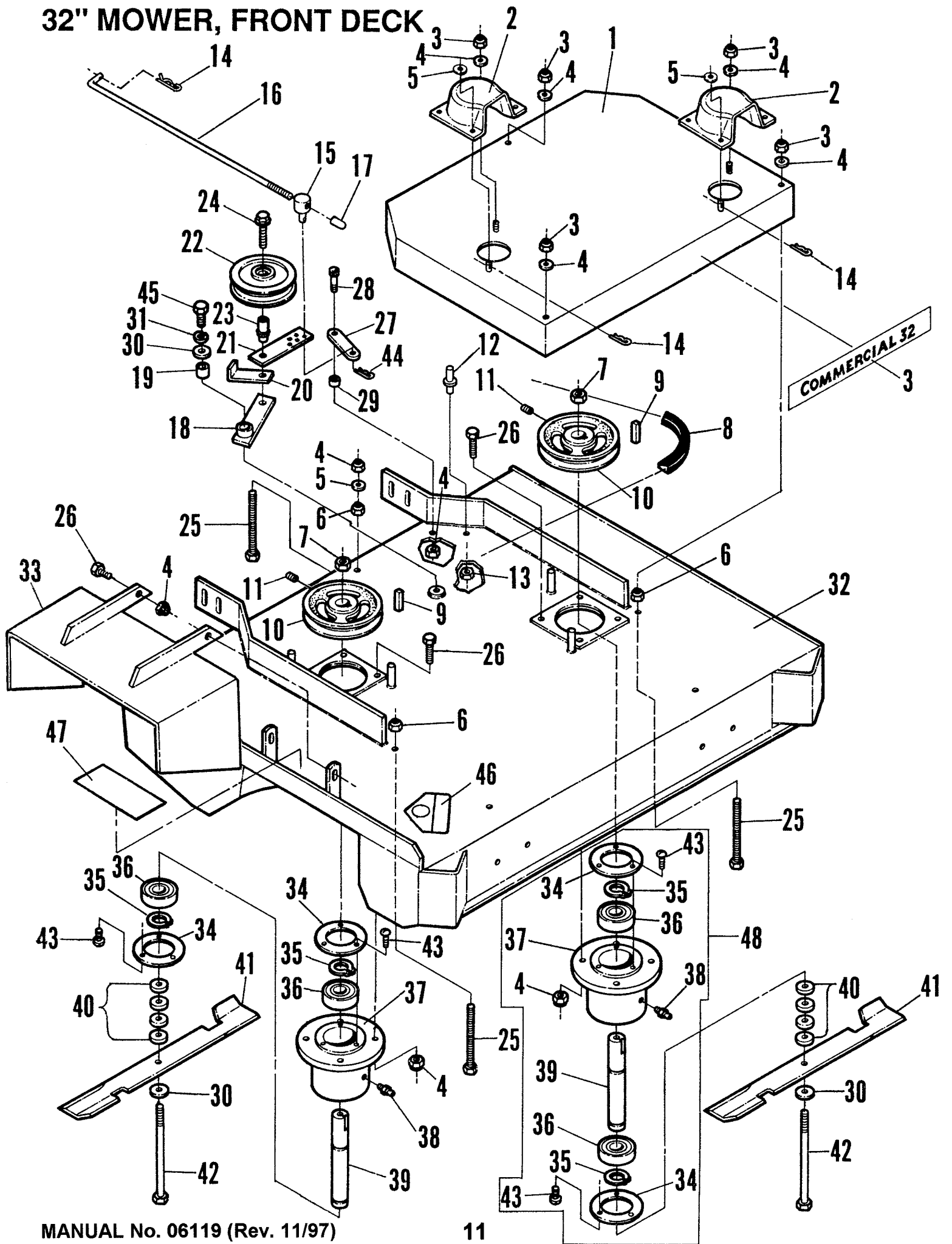
36" MOWER, FRONT DECK



36" MOWER, FRONT DECK

ITEM	PART NO.	DESCRIPTION
1	5-7572	SHIELD, Belt w/Decal 36
2	7-6524	COVER, Spindle (2)
3	1-9095	DECAL, Commercial 36
4	9-0717	NUT, 5/16-18 Hex Nyloc (17)
5	9-0692	WASHER, 5/16 Standard Flat (8)
6	9-0585	NUT, 5/16-18 Hex Flange Lock (3)
7	7-6980	NUT, 5/8-18 Hex (2)
8	7-6496	BELT, Engine Blade
9	1-2757	KEY, 1/4" Square x 1-1/4" (2)
10	7-6398	PULLEY, w/Set Screws (2)
11	7-6956	SCREW, 5/16-18 x 3/8" Hex Socket Set (4)
12	1-4415	STUD, Stop
13	9-0613	NUT, 3/8-16 Hex Flange Lock
14	7-6988	HAIRPIN, #2 Cotter (3)
15	7-7921	SWIVEL
16	7-7941	ROD, Blade Drive
17	2-3328	CAP
18	7-6386	ARM, Idler w/Bushing
19	7-6452	BUSHING
20	7-6681	SNUBBER, Belt
21	7-6686	ARM, Tightening
22	7-6688	PULLEY, Idler
23	7-6694	BUSHING, Flange
24	9-0701	BOLT, 3/8-16 x 1-3/4" Hex Flange Lock, Grade 5
25	7-6969	SCREW, 5/16-18 x 3-1/4" Hex Head Cap (3)
26	9-0209	SCREW, 5/16-18 x 1" hex Head Cap, Grade 2 (10)
27	7-6687	ARM, Blade Assist
28	7-7001	BOLT, 3/8 x Knurled Socket Head Shoulder
29	7-6689	SPACER
30	7-6982	WASHER, 5/8" Flat (3)
31	9-0333	WASHER, 5/8" Split Lock
32	5-7575	DECK, Front 36 w/Decals
33	7-6382	DEFLECTOR, Chute
34	7-6419	CAP, Cutter Housing (4)
35	7-6511	RING, Snap (4)
36	7-6510	BEARING (4)
37	7-7304	HOUSING, Cutter (2)
38	7-6997	FITTING, 1/8 NPT Grease (2)
39	7-7305	SPINDLE, Cutter (2)
40	7-6436	SPACER, Blade (8)
41	7-6450	BLADE, 18" Ultra High Lift (.164) (2)
--	7-7344	BLADE, 18" Optional Ultra High Lift (.250) (2)
42	7-6946	SCREW, 5/8-18 x 7-1/2" Hex Head Cap (2)
43	7-6951	SCREW, #10-23 x 3/8" Pan Head (12)
44	7-6989	HAIRPIN, #4 Cotter
45	9-0767	SCREW, 5/8-11 x 1" Hex Head Cap, Grade 5
46	1-3010	DECAL, CPSC
47	7-6533	DECAL, "Caution"
48	7-6379	ASSEMBLY, Cutter Housing (2)

32" MOWER, FRONT DECK

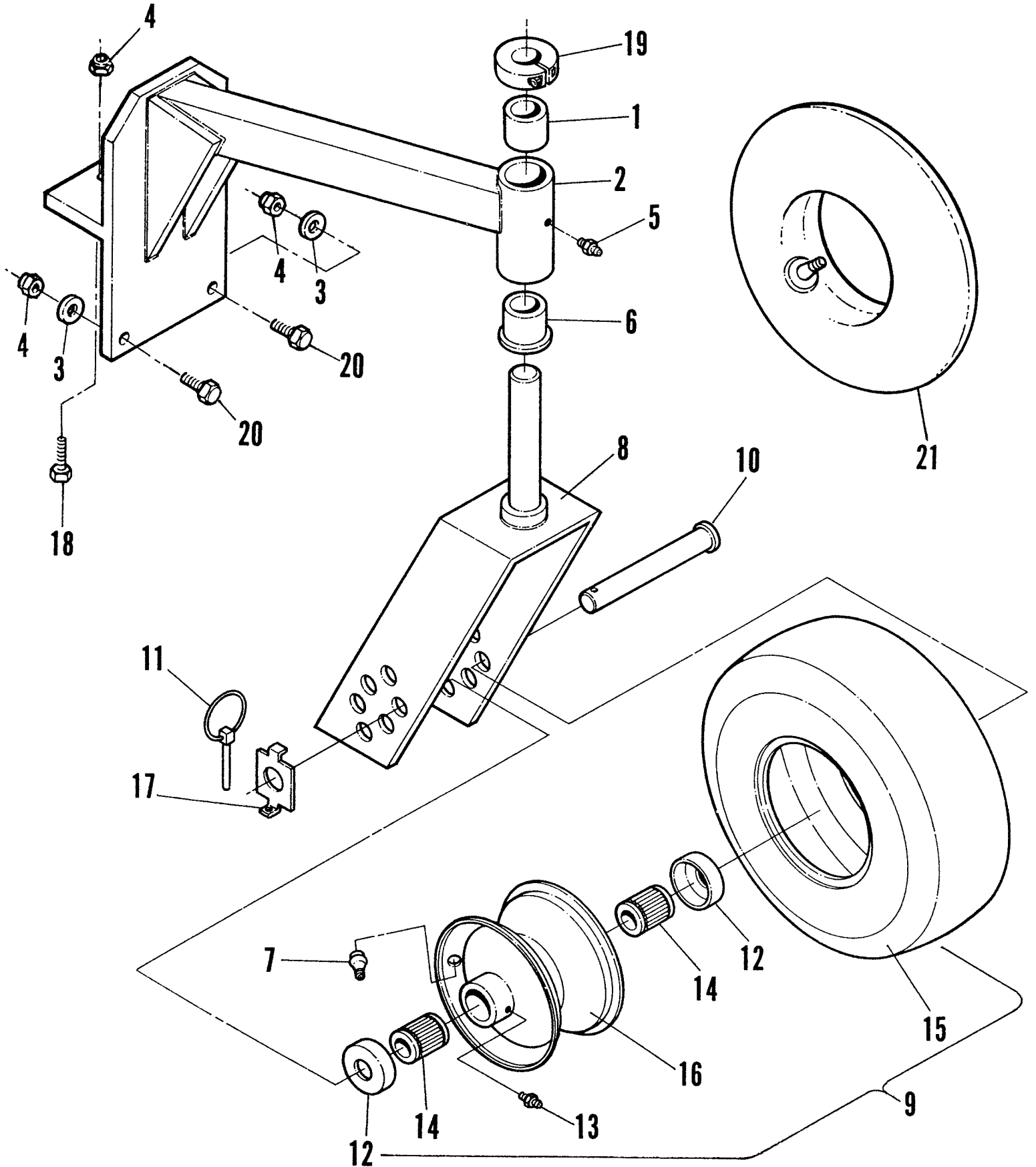


32" MOWER, FRONT DECK

ITEM	PART NO.	DESCRIPTION
1	5-7571	SHIELD, Belt w/Decal 32
2	7-6524	COVER, Spindle (2)
3	1-9094	DECAL, Commercial 32
4	9-0717	NUT, 5/16-18 Hex Nyloc (17)
5	9-0692	WASHER, 5/16 Standard Flat (8)
6	9-0585	NUT, 5/16-18 Hex Flange Lock (3)
7	7-6980	NUT, 5/8-18 Hex (2)
8	7-6353	BELT, Engine/Blade
9	1-2757	KEY, 1/4" Square x 1-1/4" (2)
10	7-6398	PULLEY, w/Set Screws (2)
11	7-6956	SCREW, 5/16-18 x 3/8" Hex Socket Set (4)
12	1-4415	STUD, Stop
13	9-0613	NUT, 3/8-16 Hex Flange Lock
14	7-6988	HAIRPIN, #2 Cotter (3)
15	7-7921	SWIVEL
16	7-7941	ROD, Blade Drive
17	2-3328	CAP
18	7-6386	ARM, Idler w/Bushing
19	7-6452	BUSHING
20	7-6681	SNUBBER, Belt
21	7-6686	ARM, Tightening
22	7-6688	PULLEY, Idler
23	7-6694	BUSHING, Flange
24	9-0701	BOLT, 3/8-16 x 1-1/4" Hex Flange Lock, Grade 5
25	7-6969	SCREW, 5/16-18 x 3-1/4" Hex Head Cap (3)
26	9-0209	SCREW, 5/16-18 x 1" Hex Head Cap, Grade 2 (12)
27	7-6687	ARM, Blade Assist
28	7-7001	BOLT, 3/8 x 3/4" Knurled Socket Head
29	7-6689	SPACER
30	7-6982	WASHER, 5/8" Flat (3)
31	9-0333	WASHER, 5/8" Split Lock
32	5-7574	DECK, Front 32 w/Decals
33	7-6382	DEFLECTOR, Chute
34	7-6419	CAP, Cutter Housing (4)
35	7-6511	RING, Snap (4)
36	7-6510	BEARING (4)
37	7-7304	HOUSING, Cutter (2)
38	7-6997	FITTING, 1/8 NPT Grease (2)
39	7-7305	SPINDLE, Cutter (2)
40	7-6436	SPACER, Blade (8)
41	7-6675	BLADE, 16-1/4" Ultra High Lift (.164) (2)
--	7-7378	BLADE, 16-1/4" Optional Ultra High Lift (.250) (2)
42	7-6946	SCREW, 5/8-18 x 7-1/2" Hex Head Cap, Grade 5 (2)
43	7-6951	SCREW, #10-24 x 3/8" Pan Head (12)
44	7-6989	HAIRPIN, #4 Cotter
45	9-0767	SCREW, 5/8-11 x 1" Hex Head Cap, Grade 5
46	1-3010	DECAL, CPSC
47	7-6533	DECAL, "Caution"
48	7-6379	ASSEMBLY, Cutter Housing (2)

CASTER WHEEL ASSEMBLY

#6-0908 CASTER WHEEL KIT (Includes items 1 thru 20)

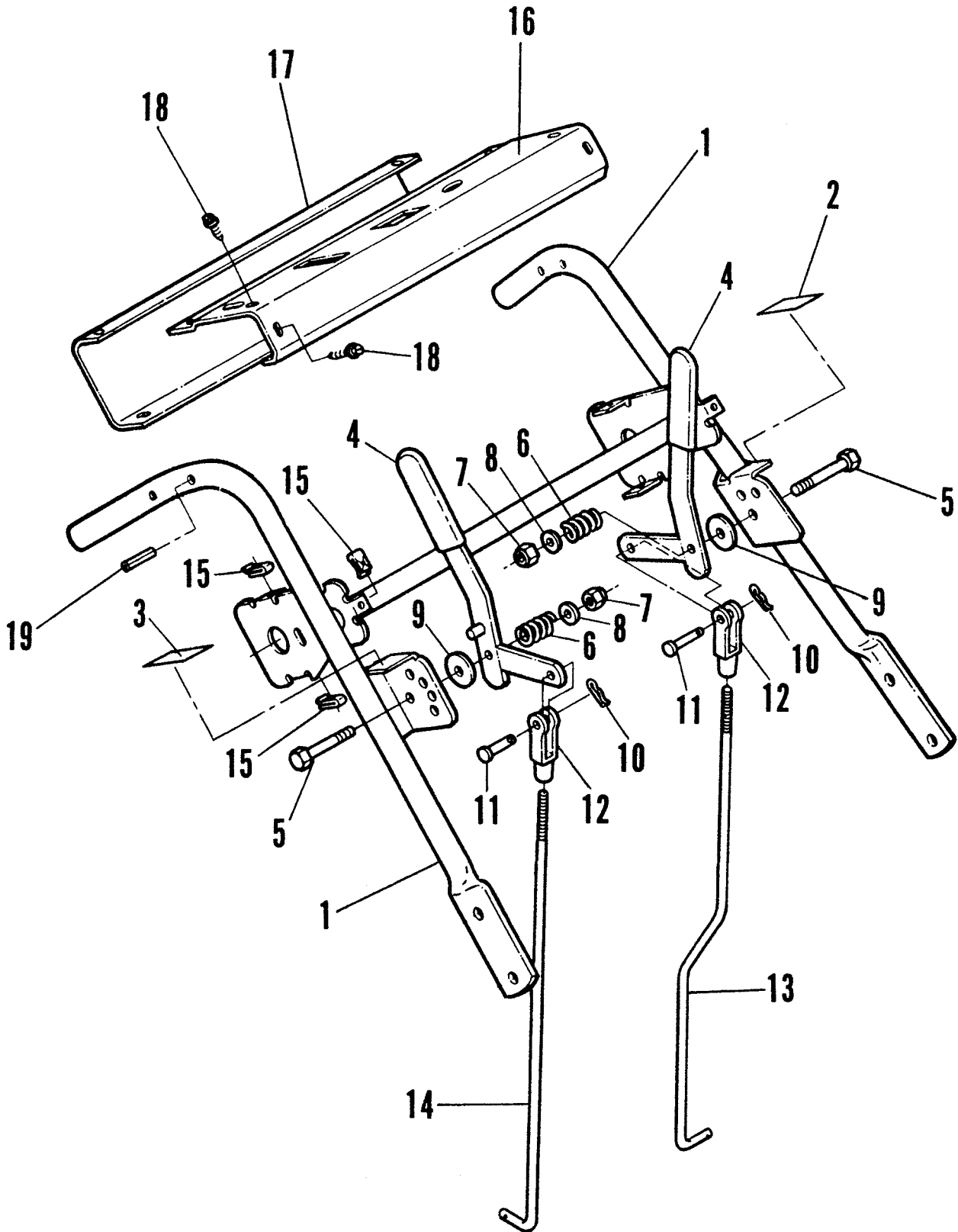


CASTER WHEEL ASSEMBLY

ITEM	PART NO.	DESCRIPTION
1	7-6515	BUSHING, Staight (2)
2	7-6399	SUPPORT, Caster w/Bushings (2)
3	9-0517	WASHER, 3/8" Flat
4	9-0613	NUT, 3/8-16 Hex Flange Lock
5	7-6997	FITTING, 1/8 NPT Straight Lube (2)
6	7-6514	BUSHING, Flange (2)
7	1-2234	STEM, Valve (2)
8	7-6401	YOKE, Caster (2)
9	7-6408	TIRE ASSEMBLY (2)
10	7-6549	AXLE, Caster (2)
11	7-6967	PIN, 3/16" Dia. Linkch (2)
12	7-7356	CAP, Wheel Size 1-1/2" I.D. (for 1-1/2" O.D. Hub) (4)
--	7-7354	CAP, Wheel Size 1-5/8" I.D. (for 1-5/8" O.D. Hub) (4)
13	7-6998	FITTING, 1/4-28, Straight Lube
14	7-7353	BEARING, Roller (4)
15	7-7346	TIRE (2)
16	7-7350	RIM, w/Valve, Cap & Grease Fitting (2)
17	7-7720	WASHER, Tab (2)
18	7-6949	BOLT, 3/8-16 x 1-3/4" Hex Head Tap
19	7-7000	COLLAR, 7/8" Clamp
20	9-0563	SCREW, 3/8-16 x 1" Hex Head Cap, Grade 5 (2)
21	1-0821	TUBE, Inner (Optional)

#6-0908 CASTER WHEEL KIT (Includes items 1 thru 20)

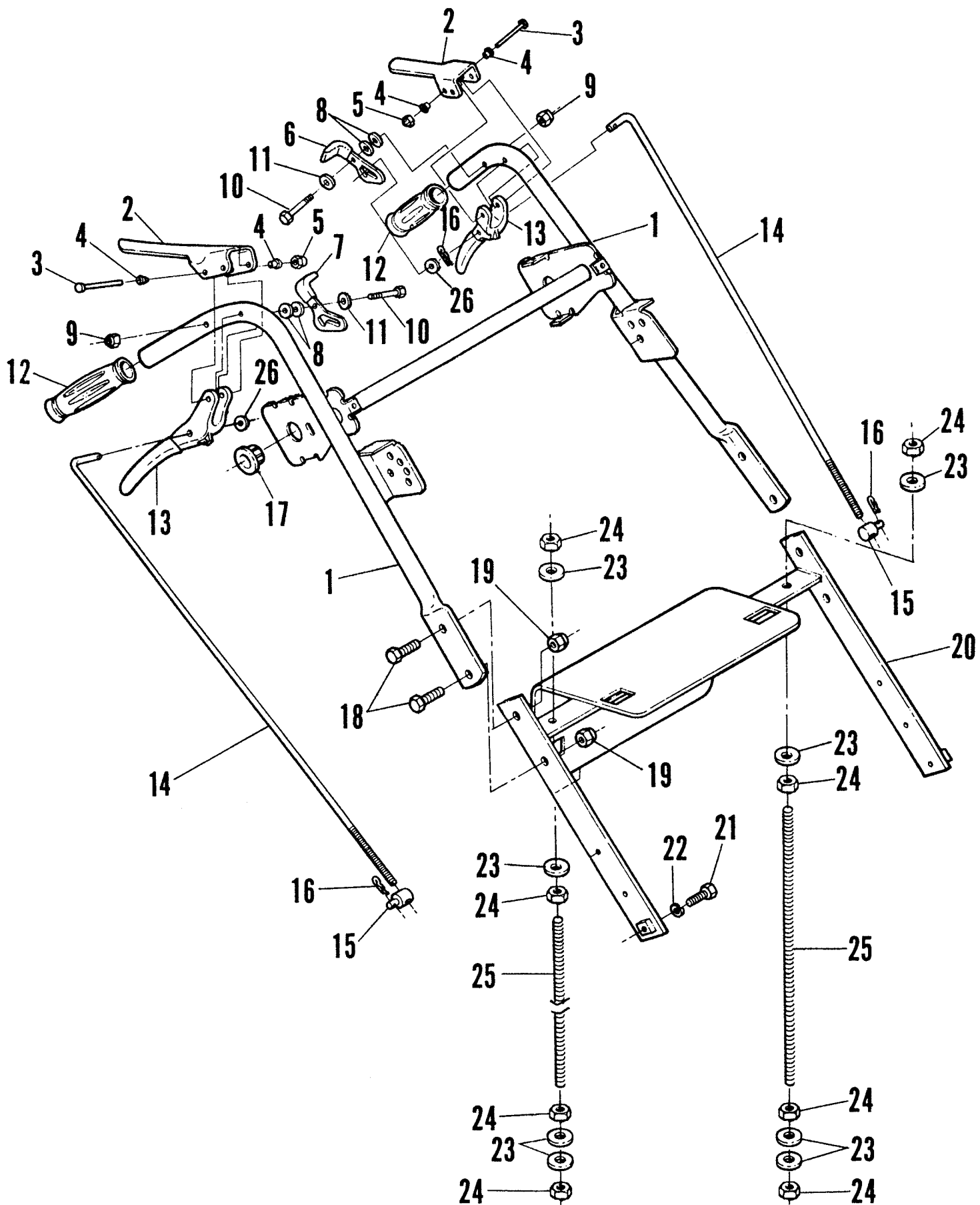
UPPER HANDLE, BLADE/VARIABLE SPEED LINKAGE



UPPER HANDLE, BLADE/VARIABLE SPEED LINKAGE

ITEM	PART NO.	DESCRIPTION
1	5-1802	WELDMENT, Upper Handle
2	7-7912	DECAL, Blade
3	7-7911	DECAL, Ground Speed
4	7-7274	LEVER, Control w/Grip Assembly (2)
5	9-0588	SCREW, 3/8-16 x 2" Hex Head Cap, Grade 5 (2)
6	7-6438	SPRING, Compression (2)
7	7-6979	NUT, 3/8-16 Hex Nyloc (2)
8	9-0517	WASHER, 3/8" Standard Flat (2)
9	7-6435	WASHER, Spacer (2)
10	7-6988	HAIRPIN, #2 (2)
11	7-7793	PIN, 5/16 Clevis (2)
12	7-6481	YOKE (2)
13	7-6519	LINKAGE, Blade
14	7-6534	LINKAGE, Ground Speed
15	1-5098	NUT, #10-24 Clip (8)
16	7-7900	PANEL, Control w/Decals
17	7-7901	COVER, Bottom w/Decal
18	7-6952	SCREW, #10-24 x 5/8" Pan Head (8)
19	2-3313	PIN, 5/16 x 1-1/8" Roll (2)

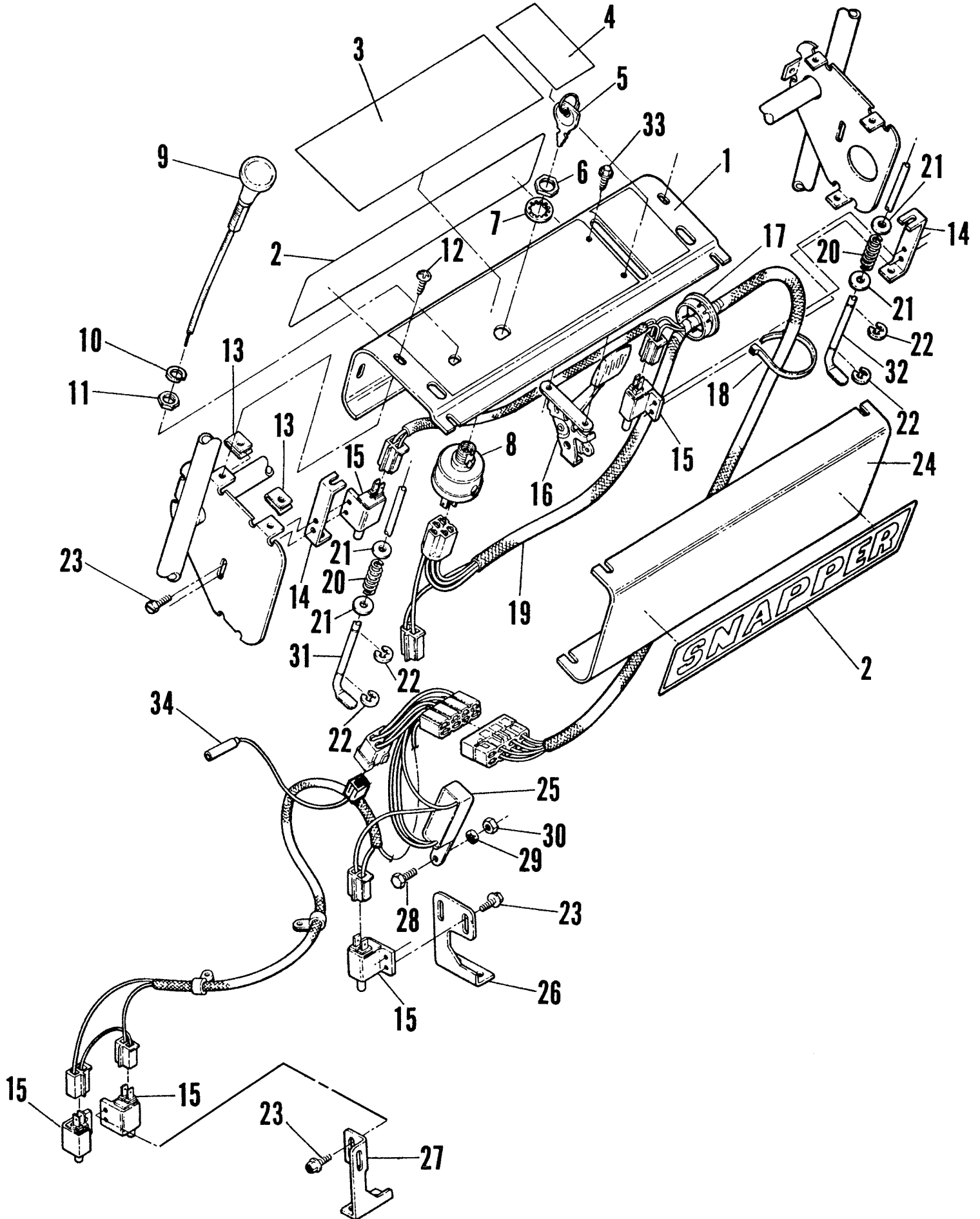
TRACTION LINKAGE



TRACTION LINKAGE

ITEM	PART NO.	DESCRIPTION
1	5-1802	HANDLE, Upper J-Weldment w/Decals
2	7-7857	LEVER, Operator Presence w/Grip (2)
3	7-7884	PIN, 3/16 x 2-1/4" Clevis (2)
4	7-7886	BUSHING (4)
5	1-4734	NUT, 3/16" Push (2)
6	7-6387	LATCH, Thumb w/Grip
7	7-6388	LATCH, Thumb w/Grip
8	9-0055	WASHER, 1/4" SAE Flat (4)
9	9-0761	NUT, 1/4-20 Prevailing Torque (2)
10	9-0639	SCREW, 1/4-20 x 1-1/2" Hex Head Cap, Grade 5 (2)
11	7-6983	WASHER, 1/4" Spring Wave (2)
12	7-6488	GRIP, Handle (2)
13	7-7870	LEVER, Traction w/Grip (2)
14	7-7875	ROD, Traction (2)
15	7-6486	SWIVEL, Long (2)
16	7-6988	HAIRPIN, #2 Cotter (4)
17	7-7882	BUSHING, Snap
18	9-0563	SCREW, 3/8-16 x 1" Hex Head Cap, Grade 5 (4)
19	7-6979	NUT, 3/8-16 Hex Nyloc (4)
20	7-6391	HANDLE, Lower
21	9-0143	SCREW, 3/8-16 x 1-1/4" Hex Head Cap, Grade 5 (2)
22	9-0118	WASHER, 3/8" Split Lock (2)
23	9-0254	WASHER, 1/2" Split Lock (8)
24	9-0258	NUT, 1/2-13 Regular Hex (8)
25	7-6430	BRACE, Handle (2)
26	9-0692	WASHER, 5/16" Standard Flat (4)

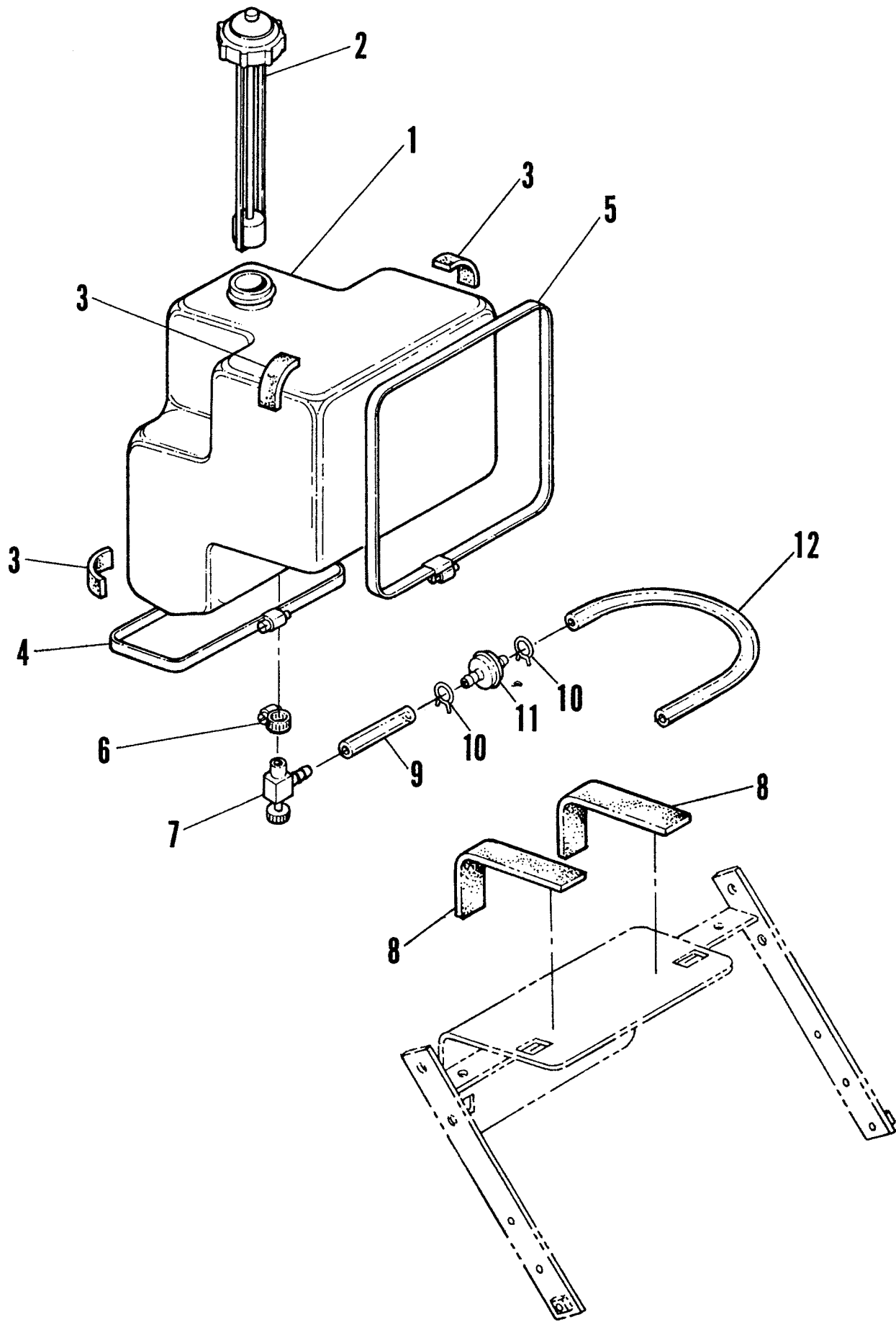
UPPER HANDLE CONSOLE/WIRING



UPPER HANDLE CONSOLE/WIRING

ITEM	PART NO.	DESCRIPTION
1	7-7900	PANEL, Control w/Decals
2	1-8593	DECAL, Snapper (2)
3	7-7872	DECAL, Control Panel
4	7-7910	DECAL, Caution
5	1-1138	KEY (2)
6	1-2685	NUT, 5/8-32 Hex
7	9-0880	WASHER, 5/8" Internal Tooth Lock
8	1-8562	SWITCH, Key
9	1-8674	CABLE, Choke Assembly
10	9-0118	WASHER, 3/8" Split Lock
11	9-0482	NUT, 3/8-24 Hex Jam
12	7-6952	SCREW, #10-24 x 5/8" Pan Head (8)
13	1-5098	NUT, #10-24 Clip (8)
14	7-7842	BRACKET, Switch (2)
15	1-9098	SWITCH, Operator Presence (5)
16	1-8675	CONTROL, Throttle w/Knob
17	7-7882	BUSHING, Snap
18	7-6856	TIE, Plastic Wire (3)
19	7-7829	HARNESS, Upper Wiring
20	7-7856	SPRING, Operator Presence (2)
21	9-0055	WASHER, 1/4" SAE Flat (6)
22	7-7874	E-Ring 1/4" Dia. Shaft (6)
23	7-7873	SCREW, 12-14 x 1/2" Hex Head Thread Forming (10)
24	7-7901	COVER, Bottom w/Decal
25	7-7830	HARNESS, Module
26	2-3290	BRACKET, Switch Right
27	7-7865	BRACKET, Switch Left
28	9-0073	SCREW, 1/4-20 x 3/4" Hex Head Cap, Grade 5
29	9-0053	WASHER, 1/4" Internal Tooth Lock
30	7-6978	NUT, 1/4-20 Hex Nyloc
31	7-7841	LINKAGE, Operator Presence, Right
32	7-7840	LINKAGE, Operator Presence, Left
33	9-0307	SCREW, #10-24 x 1/2" Hex Washer Face Self-Tap (2)
34	7-7833	HARNESS, Engine Kill (Briggs 8 & 12 HP)
--	7-7831	HARNESS, Engine Kill (Kawasaki)

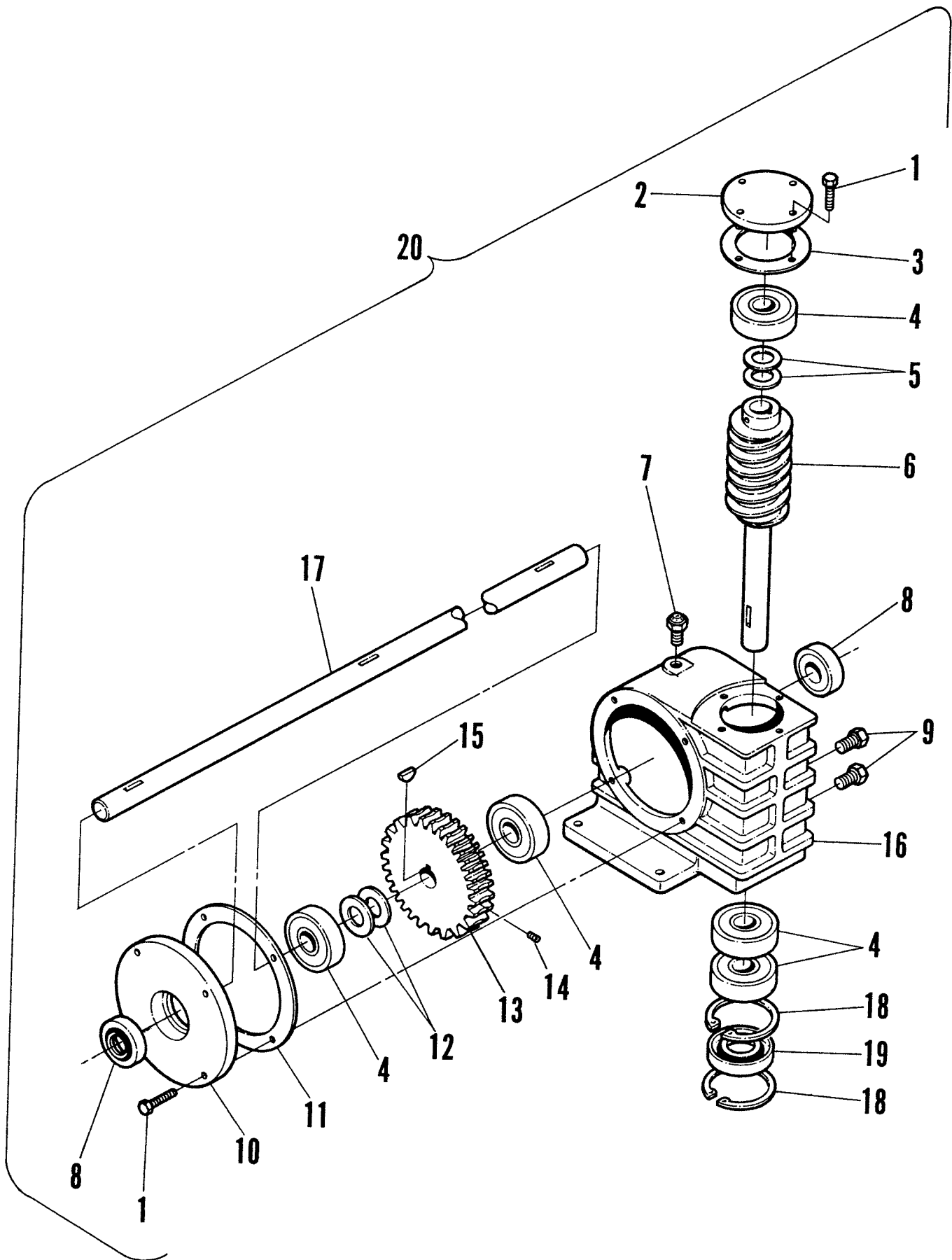
FUEL TANK ASSEMBLY



FUEL TANK ASSEMBLY

ITEM	PART NO.	DESCRIPTION
1	7-6393	TANK, Fuel w/Valve & Clamp
2	7-6535	CAP, Fuel w/Gauge
3	7-7345	PAD, Fuel Tank (4)
4	7-6562	BAND, Fuel Tank (Short)
5	7-6563	BAND, Fuel Tank (Long)
6	7-6966	CLAMP, Fuel Tank Valve
7	7-6491	VALVE, Fuel Shut-Off
8	7-6537	PAD, Fuel Tank Saddle (2)
9	7-7351	LINE, Fuel 3-1/2"
10	7-6499	CLAMP, Fuel Line (4)
11	7-6572	FILTER, Fuel
12	2-3479	LINE, Fuel 16" (Kawasaki)
--	7-6560	LINE, Fuel 17-1/2" (Briggs)

GEARBOX ASSEMBLY

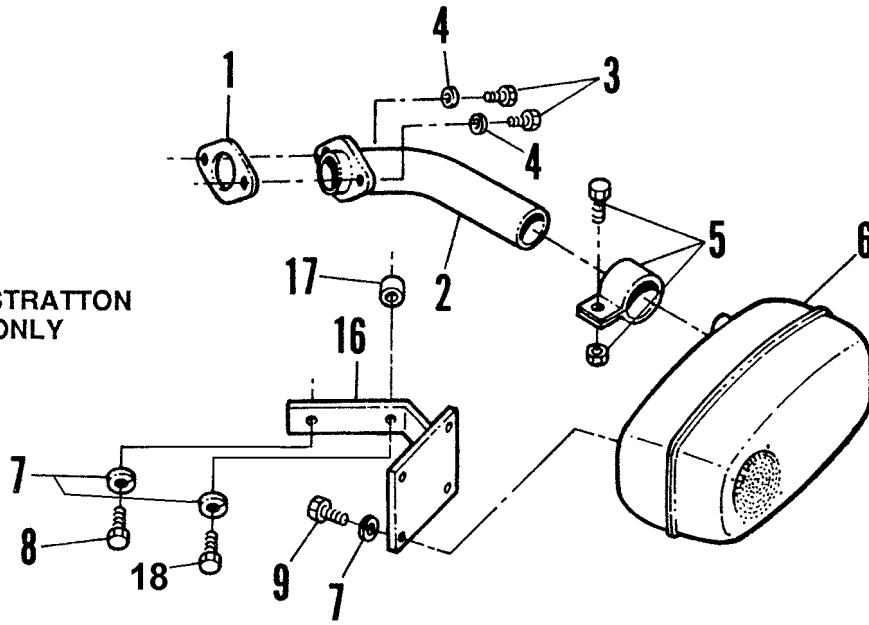


GEARBOX ASSEMBLY

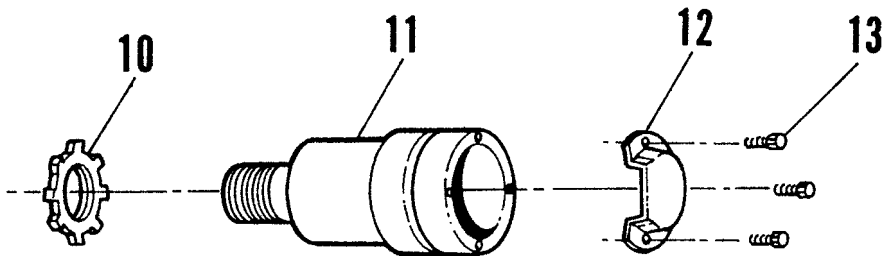
ITEM	PART NO.	DESCRIPTION
1	9-0072	SCREW, 1/4-20 x 5/8" Hex Head Cap, Grade 5 (8)
2	7-7322	COVER, Input w/Bearing (7-7324)
3	7-7323	GASKET, Input
4	7-7324	BEARING (2)
5	7-7325	SHIMS, 5/8 x 7/8x .010 (AR)
6	5-7538	ASSEMBLY, Worm (Dalton)
7	7-7326	BREATHER
8	7-7327	SEAL, Output Shaft (2)
9	7-7684	PIPE PLUG, 1/8-27 (2)
10	7-7328	COVER, Output w/Bearing (7-7324)
11	7-7329	GASKET, Output
12	7-7330	SHIMS, 5/8 x 7/8 x .005 (AR)
13	7-7331	GEAR
14	7-7680	SCREW, 1/4-20 x 3/8" Socket Head Set
15	1-0614	KEY, 5/405 Woodruff
16	7-7332	GEAR CASE
17	7-7333	SHAFT, Output
18	7-7335	RING, Internal Snap (2)
19	7-7336	SEAL, Input
20	7-6380	GEARBOX, Complete Assembly

ENGINE COMPONENTS

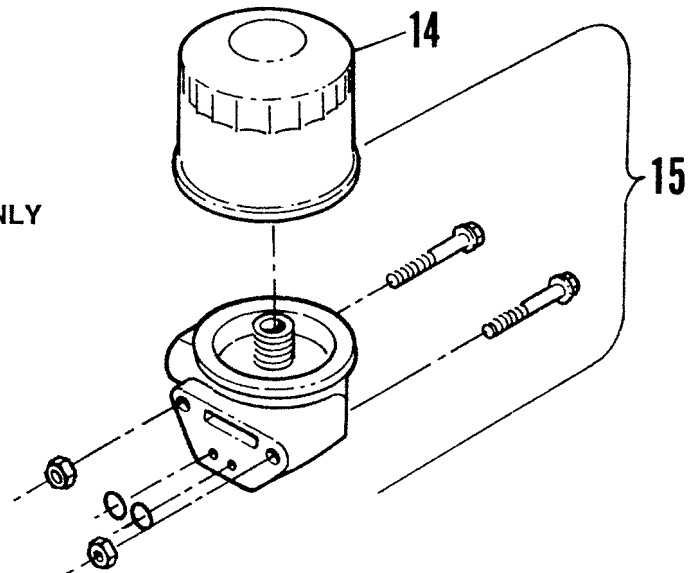
FOR BRIGGS & STRATTON
12 H.P. ENGINE ONLY



FOR BRIGGS & STRATTON
8 H.P. ENGINE ONLY



FOR KAWASAKI ENGINES ONLY



HEAT DEFLECTOR
Kawasaki Part No. 32898

ENGINE COMPONENTS

ITEM	PART NO.	DESCRIPTION
1	7-6570	GASKET, Exhaust
2	7-6569	TUBE, Exhaust Assembly
3	7-6934	SCREW, 5/16-18 x 3/4" Hex Head Cap, Grade 5 (2)
4	9-0187	WASHER, 5/16" Split Lock
5	7-6503	CLAMP, Muffler w/Bolt & Nut
6	7-6507	MUFFLER, Super Lo-Tone (12 HP Briggs)
7	9-0052	WASHER, 1/4" Split Lock (6)
8	7-6932	SCREW, 1/4-20 x 3/4" Hex Head Cap, Grade 5 (2)
9	9-0072	SCREW, 1/4-20 x 5/8" Hex Head Cap, Grade 5 (4)
10	7-7716	RING, Locking
11	7-7717	MUFFLER, Round Lo-Tone (8HP Briggs)
12	7-6355	DEFLECTOR, Side Out
13	7-7690	SCREW, Muffler Deflector (3)
14	7-7355	FILTER, Oil (12.5 HP Kawasaki)
15	7-7288	KIT, Oil Filter (12.5 HP Kawasaki)
16	7-6384	BRACKET, Muffler Mount (12 HP Briggs)
17	7-7762	SPACER, Muffler Bracket
18	9-0548	SCREW, 1/4-20 x 1" Hex Head Cap, Grade 5

SNAPPER®

4

COMMERCIAL 32

1

P.N. 1-0004

COMMERCIAL 36

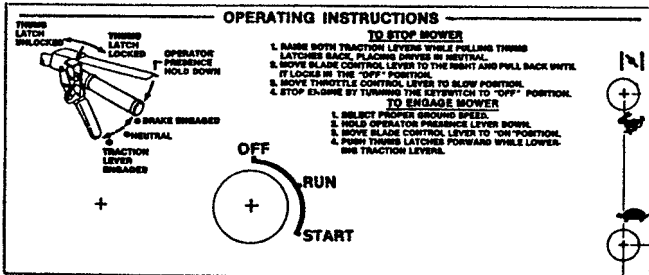
2

P.N. 1-0005

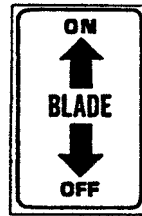
COMMERCIAL 48

3

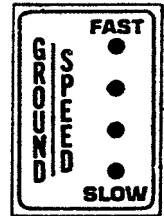
P.N. 1-0005



9



7



8

CAUTION ⚠

1. READ INSTRUCTION MANUAL BEFORE OPERATING EQUIPMENT.
2. BE SURE THE OPERATING CONTROLS ARE LOCKED IN NEUTRAL BEFORE STARTING THE ENGINE.
3. MOWER SHALL NOT BE USED UNLESS ALL GUARDS ARE BOLTED IN PLACE.
4. KEEP FEET, HANDS, & ALL OBJECTS FROM UNDER DECK. KEEP PEOPLE AND PETS AT A SAFE DISTANCE.
5. USE CAUTION ON SLOPES.
6. BEFORE LEAVING OPERATOR'S POSITION:
 - A. LOCK DRIVE LEVERS IN NEUTRAL WITH LATCHES.
 - B. DISENGAGE ATTACHMENT CLUTCH.
 - C. SHUT OFF ENGINE.
7. WHEN ADJUSTING WHEELS BE SURE ENGINE IS OFF.
8. DISCONNECT SPARK PLUG WIRE BEFORE SERVICING OR CLEANING.
9. DO NOT ADD FUEL WHILE ENGINE IS WARM OR RUNNING.

74493

11

CAUTION ⚠

- OPERATOR TRAINING REQUIRED.
- READ OPERATORS MANUAL PRIOR TO RUNNING MOWER.
- KNOW CONTROLS BEFORE OPERATING MOWER.
- KEEP ALL SAFETY DEVICES AND SHIELDS IN PLACE.
- CLEAR MOWING AREA OF WIRE, ROCKS, AND OTHER OBJECTS THAT COULD CAUSE INJURY IF THROWN BY BLADE.
- STOP ENGINE BEFORE YOU LEAVE THE OPERATORS POSITION.

10



6

CAUTION ⚠

THE MOWER SHALL NOT BE OPERATED WITHOUT EITHER THE ENTIRE GRASS CATCHER OR THE CHUTE DEFLECTOR BOLTED IN PLACE. DO NOT REMOVE GRASS CATCHER UNTIL BLADE OR BLADES HAVE STOPPED.

5

32, 36, 48 DECAL KIT
Part No. 6-0909

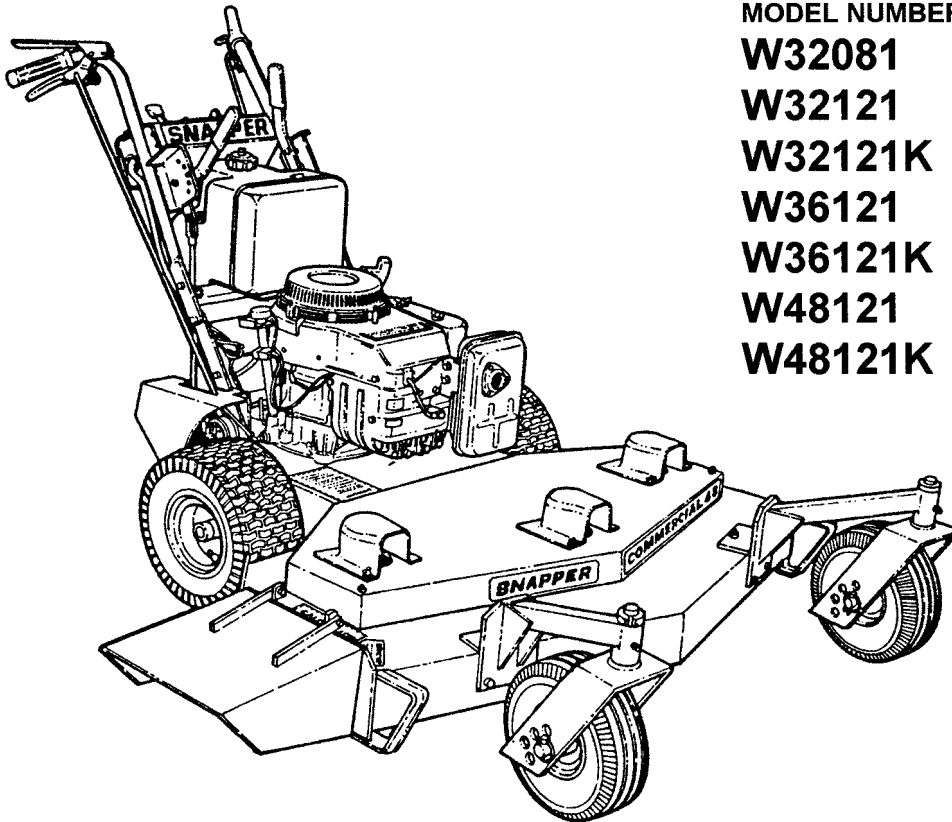
ITEM	PART NO.	DESCRIPTION
1	1-9094	DECAL, 32 Commercial
2	1-9095	DECAL, 36 Commercial
3	1-9105	DECAL, 48 Commercial
4	1-8593	DECAL, Snapper (3)
5	7-6533	DECAL, Caution
6	1-3010	DECAL, CPSC Caution
7	7-7912	DECAL, Blade
8	7-7911	DECAL, Ground Speed
9	7-7872	DECAL, Control Panel
10	7-7910	DECAL, Caution
11	7-6493	DECAL, Caution

Parts Manual for

SNAPPER[®]

32", 36", & 48"

COMMERCIAL MOWERS



MODEL NUMBERS:

W32081

W32121

W32121K

W36121

W36121K

W48121

W48121K

IT IS THE POLICY OF SNAPPER TO IMPROVE ITS PRODUCTS WHENEVER IT IS POSSIBLE AND PRACTICAL TO DO SO. WE RESERVE THE RIGHT TO MAKE CHANGES OR ADD IMPROVEMENTS AT ANY TIME WITHOUT INCURRING ANY OBLIGATION TO MAKE SUCH CHANGES ON PRODUCTS MANUFACTURED PREVIOUSLY.

SNAPPER[®] McDonough, GA., 30253 U.S.A.

(Rev. 11/97) MANUAL No. 06119A