

#7600029 TRIPLE BAG CATCHER KIT FOR 44 & 50" SNAPPER / SIMPLICITY RZT RIDING MOWERS



WARNING



DO NOT attempt any adjustments, maintenance, repairs, or service with engine running. Stop engine. Engage parking brake. Remove key. Remove spark plug wire and secure wire away from spark plug. Engine, muffler and surrounding areas are extremely hot. Avoid serious burns; allow components to cool down before installing kit. Replace worn or damaged parts prior to operating. Use approved fuel container. DO NOT smoke near open fuel container. DO NOT fill fuel tank indoors or when engine is running. Allow engine to cool for at least ten minutes before refilling. Make sure that fuel cap is tightened securely. Wipe off any spilled fuel before starting engine.

STEP 1: Remove the two innermost front carriage bolts securing the unit footrest to the frame. Install the seven ballasts against the front of the machine, securing with the supplied 5/16 x 2-1/2" carriage bolts and lock nuts in place of those removed. Tighten hardware securely. See Figure 1.

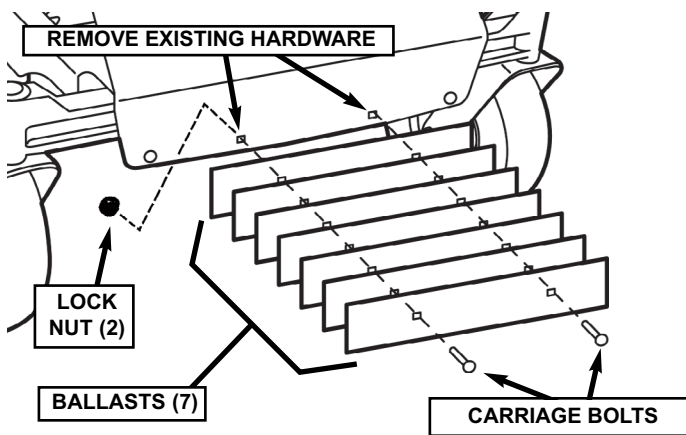


FIGURE 1

STEP 2: Install the baffles to the inside front of the mower deck:

NOTE: Prior to installation, remove any existing baffle(s) that may be installed to the inside front of the deck.

	44" Mower Deck	50" Mower Deck
"A"	RH side 26-1/4" long	RH side 29-3/4" long
"B"	LH side 24-7/8" long	LH side 27-3/4" long

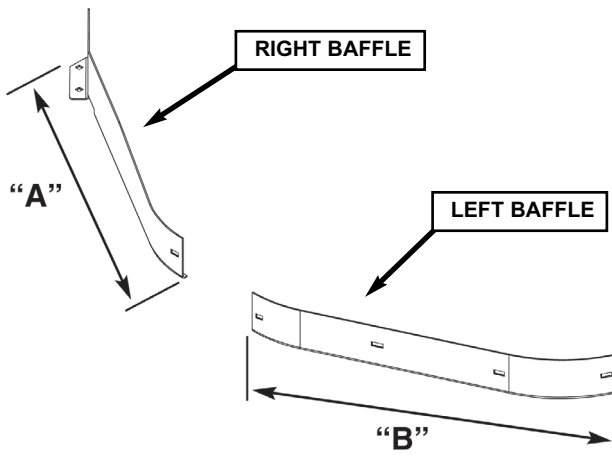


FIGURE 2

a. Measure the baffles to determine which are needed. See Figure 2.

b. Secure the left baffle to the inside front of the deck with four 5/16 x 5/8" carriage bolts and flange nuts. See Figure 3.

c. Secure the right baffle to the inside front and bottom of the deck with three 5/16 x 5/8" carriage bolts and flange nuts. See Figure 3. Be sure to tighten all hardware securely.

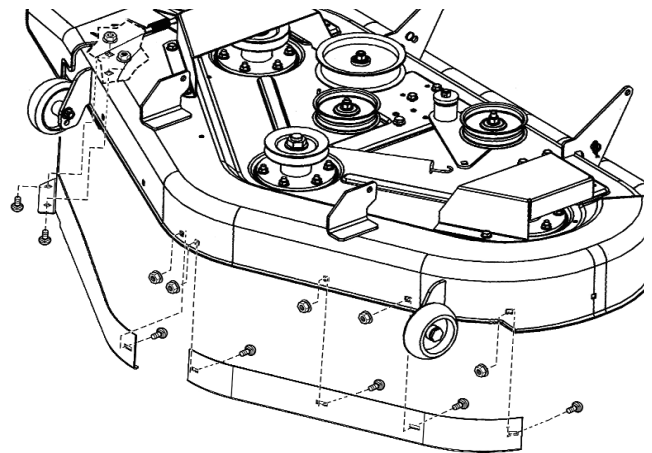


FIGURE 3

(Components removed for clarity)

STEP 3: Raise the discharge deflector. See Figure 4.

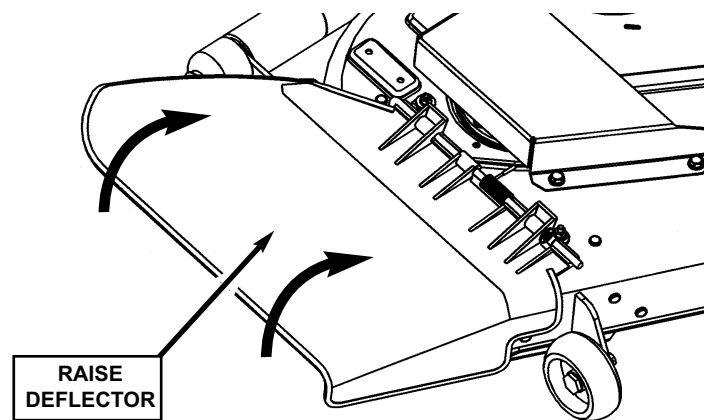


FIGURE 4

STEP 4: Install the bag adapter deck mounting hardware:
a. Install the 1/4 x 2-1/2" hex bolt, fitted with one 1/4-20 flange nut threaded all the way up to the end of the thread, into the noted hole in the rear of the deck. See Figure 5. Secure with a second flange nut, tightening securely.
b. Attach the rod mount plate to the right front of the deck with two 5/16 x 3/4" hex bolts and center lock nuts, tightening securely. See Figure 5.

50" DECKS ONLY: Before attaching the rod mount plate to the deck, remove all the gage wheels from the deck. Install the rod mount plate, then replace the existing gage wheels with the supplied gage wheels and hardware. See Figure 5a. (**NOTE:** Some decks have two wheels; others have four.)

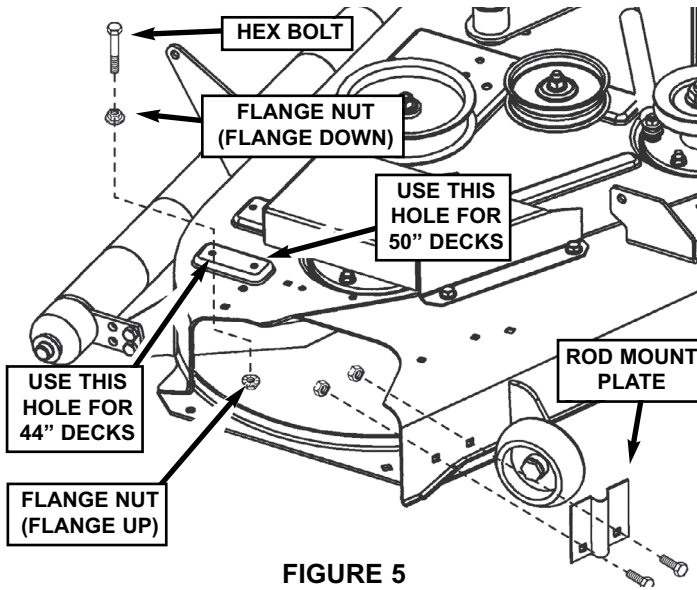


FIGURE 5
 (Discharge deflector removed for clarity)

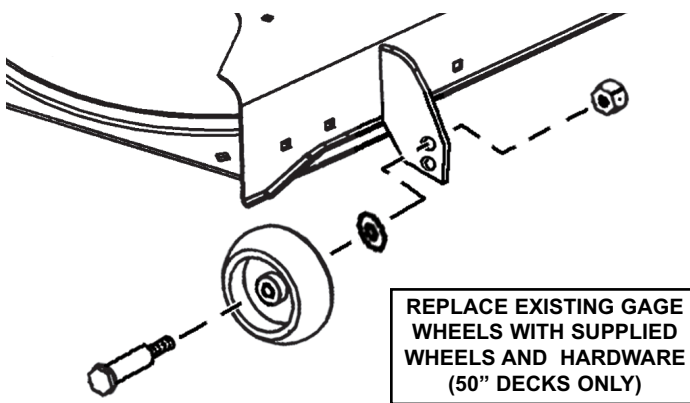


FIGURE 5a

STEP 5: Assemble the bag adapter:
a. Insert one 5/16 x 3/4" hex bolt, fitted with one 5/16 flat washer, up through the front hole in the adapter, and one 5/16 x 1-1/2" hex flange bolt up through the rear hole. See Figure 6.
b. Install the mount rod onto the bolt threads, securing with two 5/16-18 flange nuts, tightening securely. See Figure 6.
c. Install the rear of the strap onto the thread of the rear bolt, and secure the strap with a 5/16-18 hex center lock nut. See Figure 6. **NOTE:** Do not overtighten the lock nut.

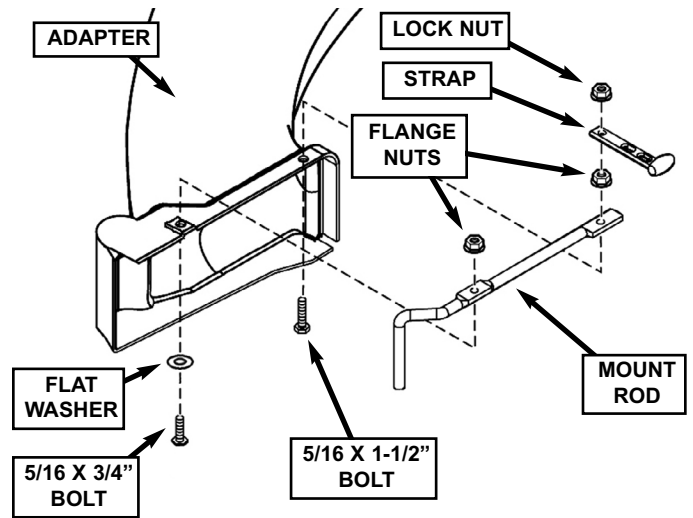


FIGURE 6

STEP 6: Install the bag adapter to the deck by inserting the mount rod on the adapter into the rod mount plate on the deck. Then attach the strap on the adapter to the shank of the hex bolt on the deck installed in Step 4a. See Figure 7.

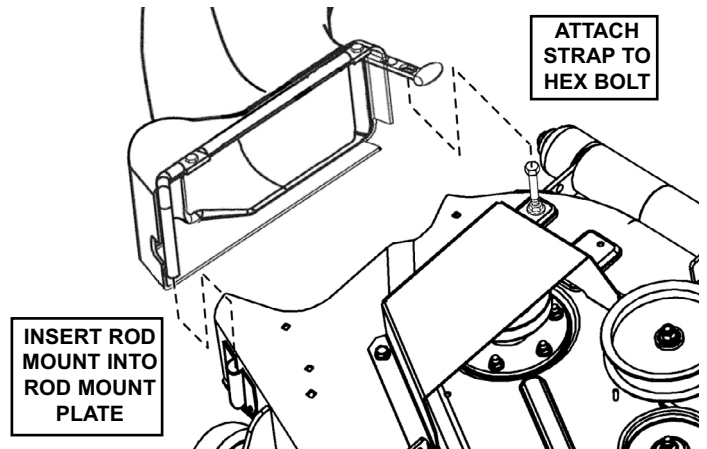


FIGURE 7
 (Discharge deflector removed for clarity)

STEP 7: Install the grass catcher support:
a. Remove the three noted bolts and nuts from the right rear of the unit. See Figure 8.

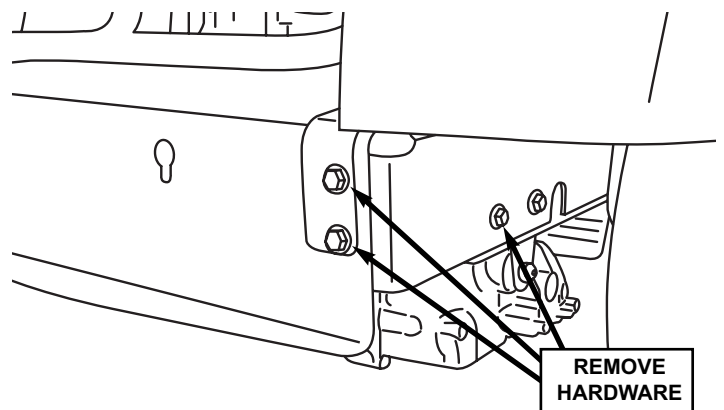


FIGURE 8

b. Install the catcher support onto the unit, securing with the hardware noted in Figure 9. Tighten all hardware securely. **NOTE:** Be sure to reinstall any components that may have been removed when removing the hardware in Step 7a.

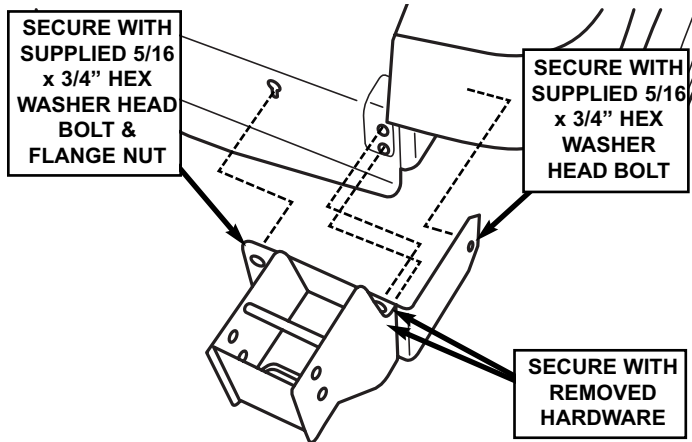


FIGURE 9

STEP 8: Insert the bagger channel into the grass catcher support, and secure with two 1/2 x 4-3/16" clevis pins, washers, and hair pins. See Figure 10.

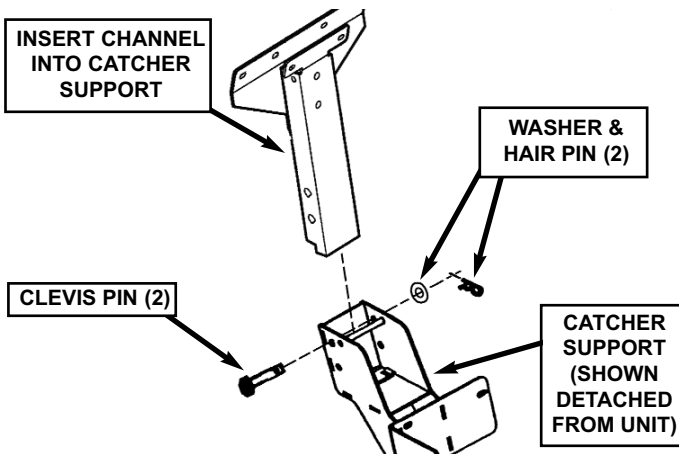


FIGURE 10

STEP 9: Install the catcher frame into the top of the bagger channel, securing with two 5/16 x 2-1/4" hex bolts in the inner two holes, and two 5/16 x 2" hex bolts in the outer two holes. See Figure 11. Secure the bolts with four hex center lock nuts, tightening securely. Also, Insert one square end cap into each end of the square tube, and one round end cap into each end of the four round tubes. See Figure 11.

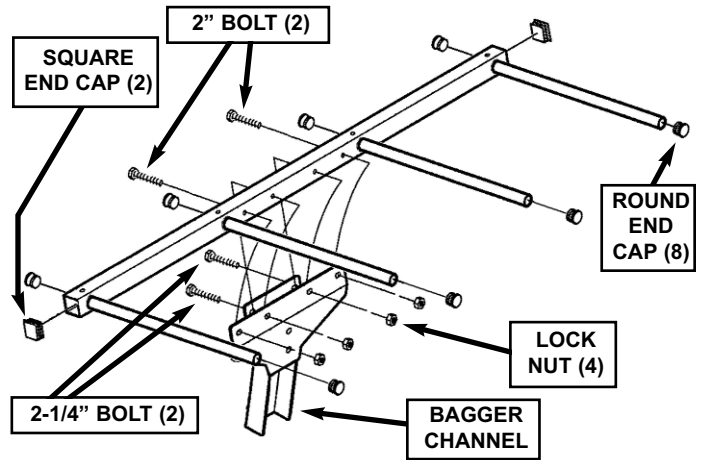


FIGURE 11

STEP 10: Install the cover handle onto the screen support bar, behind the front of the cover assembly, securing with two pan head screws and lock nuts. See Figure 12.

NOTE: On some units, the cover handle has been pre-assembled onto the cover assembly.

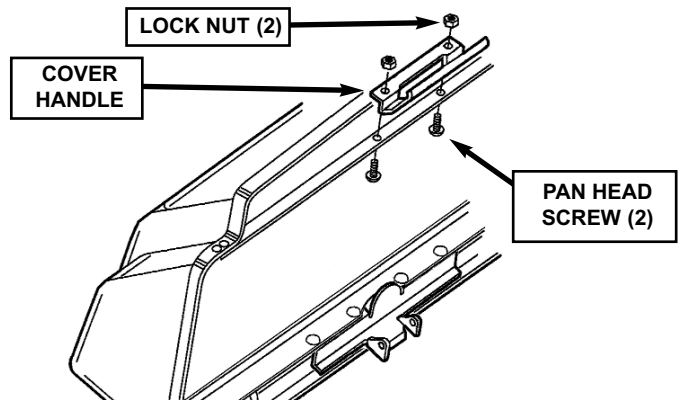


FIGURE 12

STEP 11: Attach the cover assembly to the bagger channel by aligning the holes in the cover hinge with the top set of holes in the bagger channel. Insert the hinge pin through the holes, and secure with a hair pin. See Figure 13.

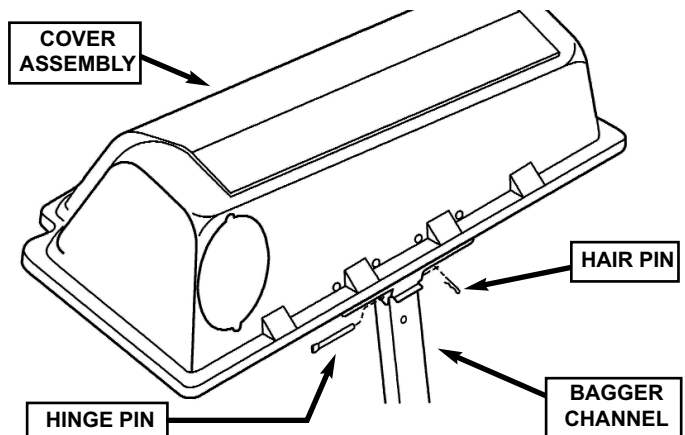


FIGURE 13

STEP 12: Assemble the discharge tubes:

a. Install one strap assembly to each of the locations marked 'A' in Figure 16. Insert one #10-24 x 5/8" pan head screw, fitted with one #10 x 1/2" OD flat washer, out through the hole in the tube or adapter. Secure with one #10 x 3/4" OD flat washer, strap, and #10-24 tee nut, tightening securely. See Figure 14.

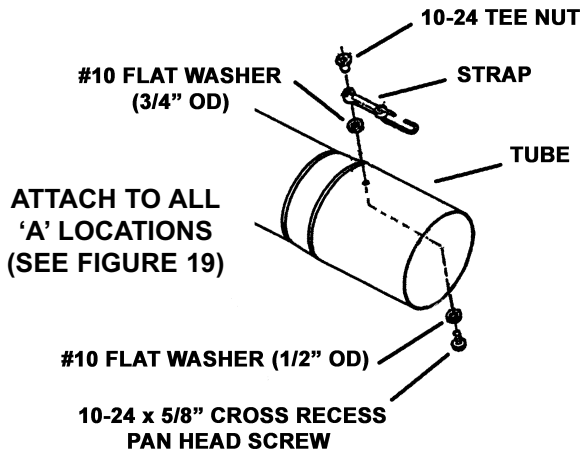


FIGURE 14

b. Install one tee nut assembly to each of the locations marked 'B' in Figure 16. Insert one 5/16 x 5/8" pan head screw out through the hole in the tube or adapter. Secure with one 5/16" flat washer and 5/16-18 tee nut, tightening securely. See Figure 15.

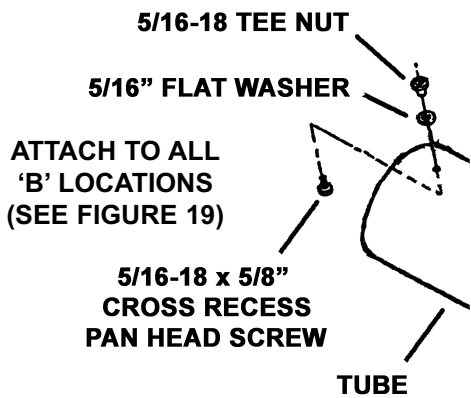


FIGURE 15

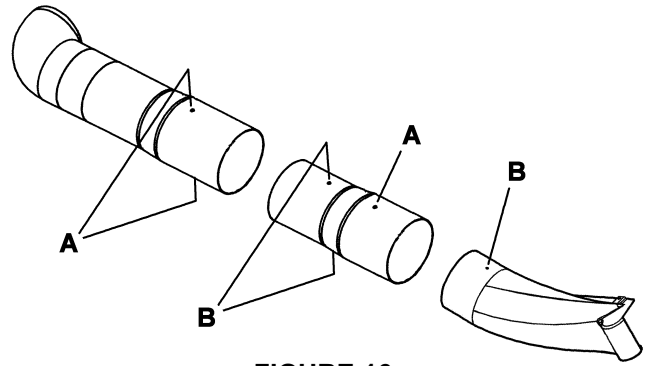


FIGURE 16

c. Install the large end of the lower tube (short, straight tube) onto the end of the adapter, and secure the strap on the tube to the tee nut on the adapter. See Figure 17.

d. Install the curved end of the upper tube into the hole in the cover assembly, making sure the discharge faces toward the left of the unit. Install the bottom of the upper tube onto the top of the lower tube, and secure the two straps on the upper tube to the two tee nuts on the lower tube. See Figure 17.

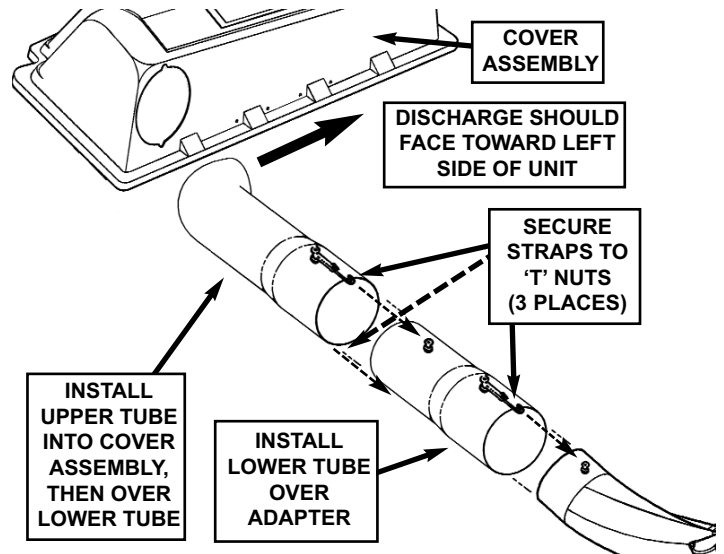


FIGURE 17

STEP 13: Assemble the grass containers:

a. Match each container section with its corresponding sections (see Figure 18):

Container 1 A1, A2, A3

Container 2 B1, B2, B3

Container 3 A1, A2, A3 (or B1, B2, B3).

b. With the matched numbers aligned, insert the bottom section (A3, B3) of each container through the middle section (A2, B2), and the middle section through the top section (A1, A1), until the tabs around the top of each section lock the section in place. See Figure 18.

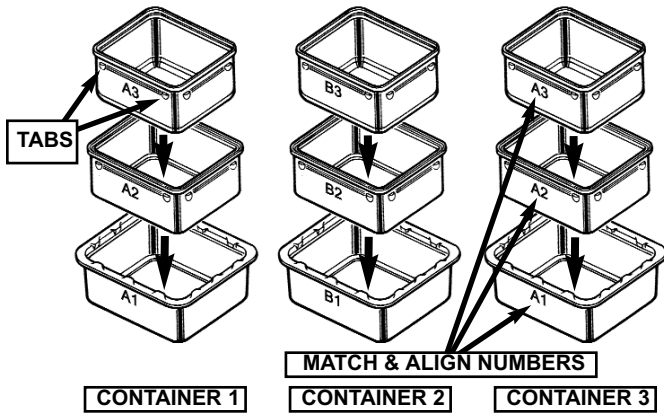


FIGURE 18

c. With the containers assembled, firmly insert one plastic fastener out through the aligned holes in all four sides where the top and middle sections meet. See Figure 19.

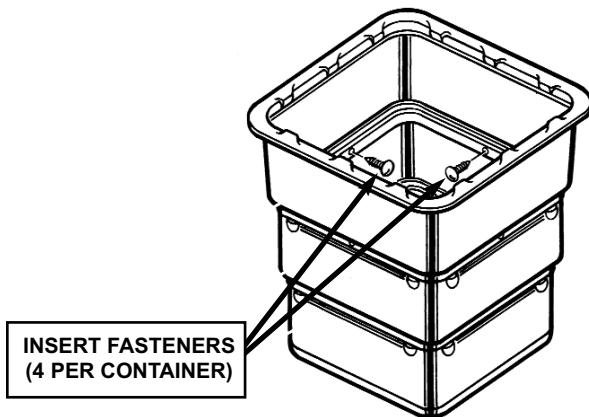


FIGURE 19

STEP 14: Flip open the cover assembly, then slide each container fully onto the U-tube assembly. See Figure 20.

NOTE: Make sure that the warning label on the side of each container is facing out.

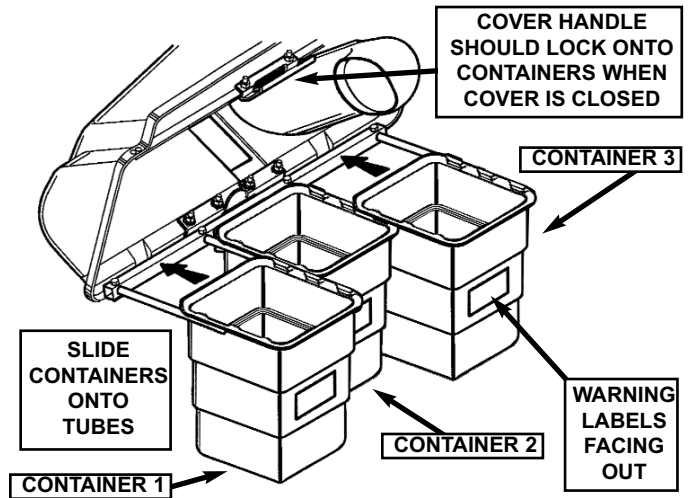


FIGURE 20

When closing the cover, make sure that the cover handle locks under the lips of the containers.

Assembly is complete.

Operation:

WARNING

To prevent injury or damage, always follow the operating instructions supplied with your machine when operating the bagger.

To use the bagger:

- Start the engine.
- Move the throttle control to the fast position.
- To fill the containers, always operate at a slow ground speed.

To check and clean the discharge tubes:

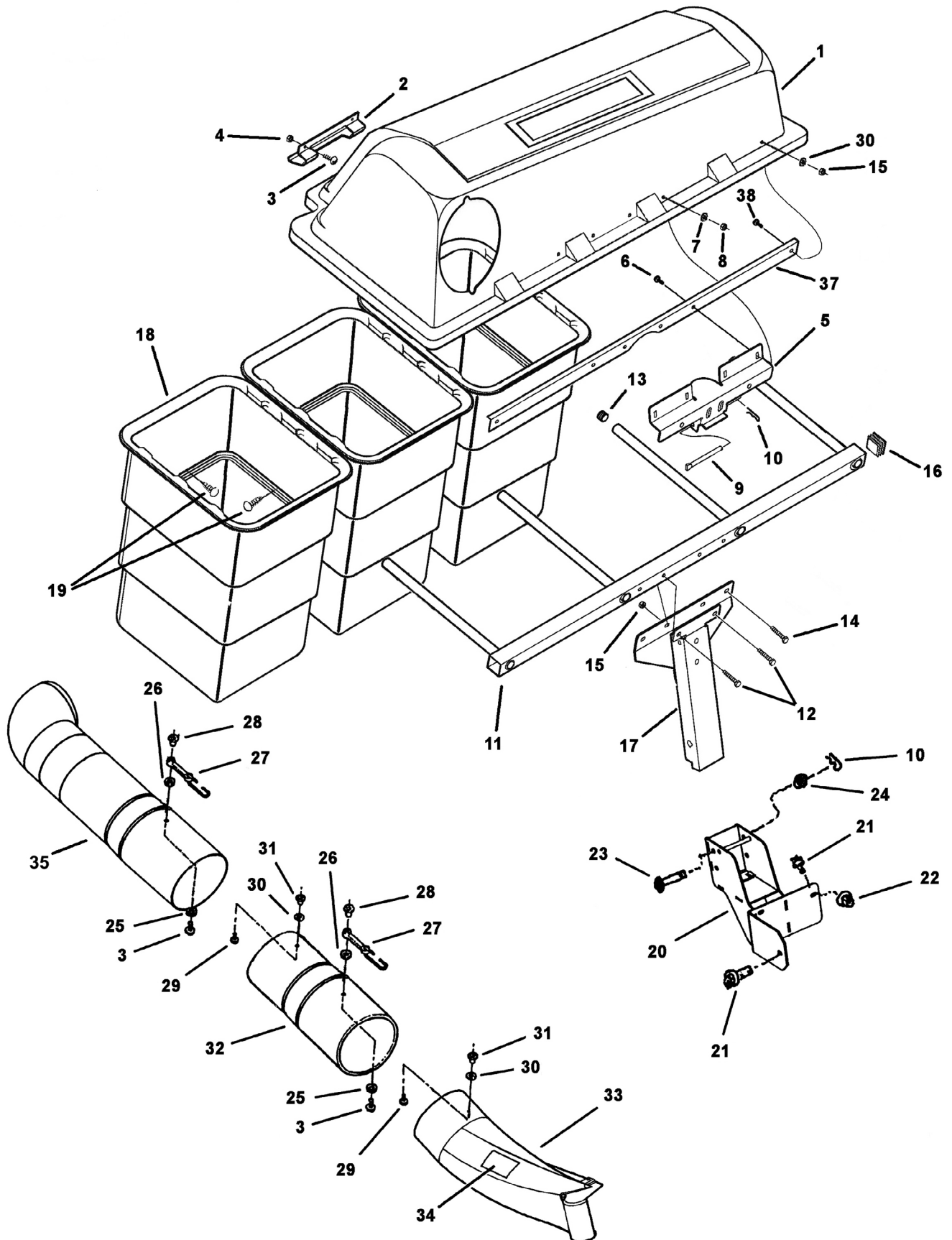
- Stop machine motion, turn off the blades, stop the engine.
- Disconnect the straps securing the discharge tubes, and remove the tubes.
- If needed, clear the discharge tubes of clogged debris, and clean with soap and water.
- Replace the discharge tubes.

To empty the containers:

- Stop machine motion, turn off the blades, stop the engine.
- Pull the cover handle back and raise the cover.
- Remove the containers and empty as needed.

NOTE: For easy removal of grass, use a 33 gallon plastic lawn bag inside each container.

7600029 TRIPLE BAG CATCHER COMPONENTS

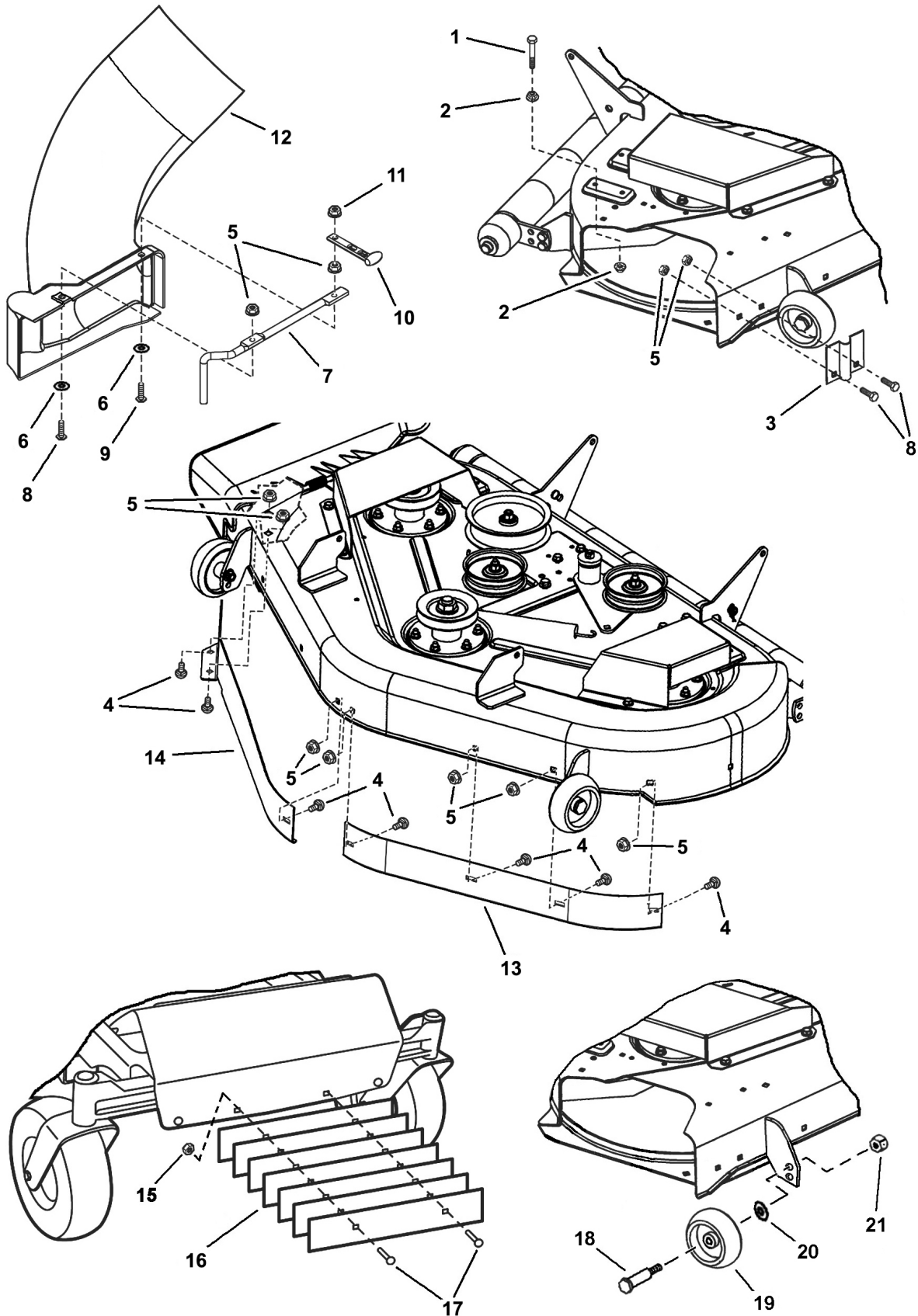


SHEET 1

7600029 TRIPLE BAG CATCHER COMPONENTS

ITEM NO.	PART NO.	DESCRIPTION	QTY
1	7100688	ASSY., Triple Cover - 44"/50"	1
2	720537	HANDLE, Cover	1
3	7036415	SCREW, Cross Recess Pan Head, 10-24 X 5/8	6
4	7091290	NUT, Hex Lock 10-24	2
5	726853	HINGE, Cover	1
6	7091530	BOLT, Carriage 1/4-20 X 3/4	4
7	7091294	WASHER, SAE 1/4	4
8	7092126	NUT, Hex Center Lock 1/4-20	4
9	720525	PIN, Cover Hinge	1
10	7091503	PIN, Hair 3/32 X 1.5	3
11	7400196	WELDMENT, Triple Catcher Frame	1
12	7076938	SCREW, Hex Head Cap 5/16-18 X 2-1/4	2
13	720561	PLUG, Round	8
14	7027174	SCREW, Hex Head Cap 5/16-18 X 2	2
15	7091575	NUT, Hex Center Lock 5/16-18	8
16	726347	PLUG, Square	2
17	1732869	WELD, Channel Support - Triple	1
18	720557	CONTAINER, Nestable - Triple Catcher (Set of 3)	1
19	7016704	FASTENER, Panel	12
20	7400094	WELDMENT, Grass Catcher Support - RZT	1
21	7091541	BOLT, Hex Washer Self Tap 5/16-18 X 3/4	2
22	7091601	NUT, Flange 5/16-18	3
23	7900034	PIN, Clevis 1/2" X 4.160	2
24	7091587	WASHER, SAE 1/2	2
25	7091552	WASHER, SAE .219 I.D. X .500 O.D.	3
26	7036422	WASHER, SAE .190 I.D. X .75 O.D.	3
27	7036433	STRAP, Mounting Bag Adapter/Tube	3
28	7036404	NUT, Tee 10-24	3
29	7091001	SCREW, Pan Head Torx 5/16-18 X 5/8	3
30	7090188	WASHER, SAE 5/16	4
31	7036543	NUT, Tee 5/16-18	3
32	7100701	TUBE, Lower	1
33	7100692	ADAPTER, Bag	1
34	1732819	DECAL, Warning	1
35	7100618	TUBE, Upper	1

7600029 TRIPLE BAG CATCHER COMPONENTS



SHEET 2
NOTE: Item Numbers 18-21
Required for 50" Decks Only

7600029 TRIPLE BAG CATCHER COMPONENTS

ITEM NO.	PART NO.	DESCRIPTION	QTY
1	7091256	SCREW, Hex Head Cap 1/4 - 20 X 2-1/4	1
2	7091584	NUT, Hex Flange 1/4-20	2
3	1726578	PLATE, Rod Mount	1
4	7090799	BOLT, Carriage 5/16-18 X 5/8	9
5	7091601	NUT, Flange 5/16-18	12
6	7090188	WASHER, SAE 5/16	4
7	1731428	ROD, Adapter Mount	1
8	7091318	SCREW, Hex Head Cap 5/16-18 X 3/4	1
9	7091602	BOLT, Hex Flange 5/16-18 X 1.5	1
10	2171600	STRAP, Rubber	1
11	7091298	NUT, Hex Lock 5/16-18	3
12	7100692	ADAPTER, Bag	1
13	1716879	BAFFLE, LH, 44" Mower	1
13	1716870	BAFFLE, LH, 50" Mower	1
14	1731990	BAFFLE, RH, 44" Mower	1
14	1726364	BAFFLE, RH, 50" Mower	1
15	7091575	NUT, Hex Center Lock 5/16-18	2
16	7300367	BALLAST	7
17	7090959	BOLT, Carriage 5/16-18 X 2-1/2	2
18	1714760	WHEEL, Gage	4
19	2108765	BOLT, Shoulder	4
20	7090122	WASHER, SAE 3/8	4
21	7091585	NUT, Hex Center Lock 3/8-16	4

SHEET 2
NOTE: Item Numbers 18-21
Required for 50" Decks Only

