

Parts Manual for

SNAPPER®

22" STEEL DECK WALK BEHIND MOWERS



MODEL
<i>NS2265 (7800228)</i>
<i>NSP2265 (7800229)</i>
<i>S2265 (7800189)</i>
<i>SP2265 (7800165)</i>

Briggs & Stratton Yard Power Products Group

535 Macon Road
McDonough, GA, 30253 U.S.A.
800-935-2967

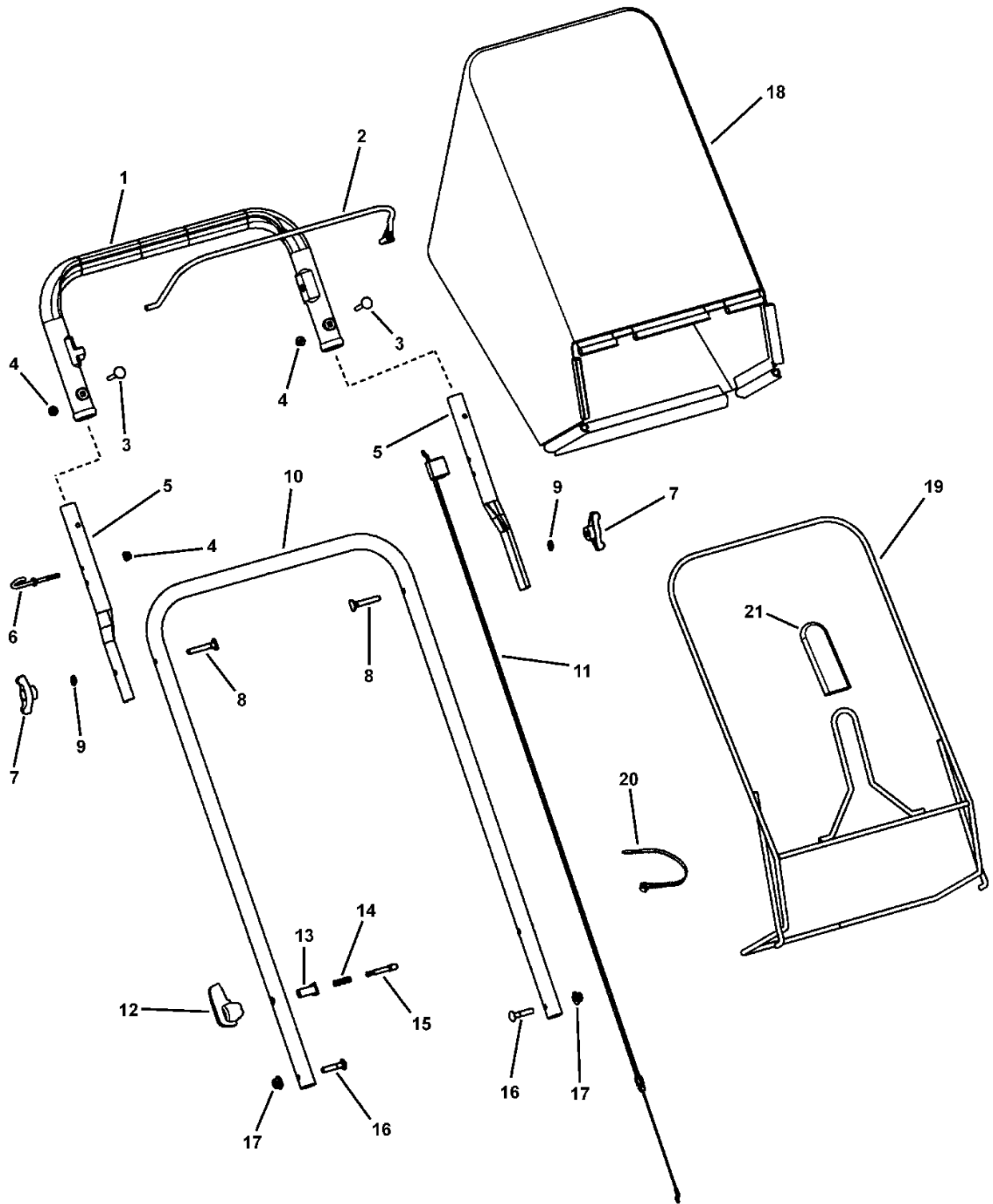
Revision IR, 4/7/2008

Manual No. 7006258

TP 400-5393-IR-WB-N

PAGE	GROUP
4	Handles & Controls (Push)
6	Handles & Controls (Self-Propelled)
8	Deck Assembly (Push)
10	Deck Assembly (Self-Propelled)
14	Height-of-Cut Assemblies
16	Engine, Blade & Front Cover
18	Decals

Handles & Controls (Push)

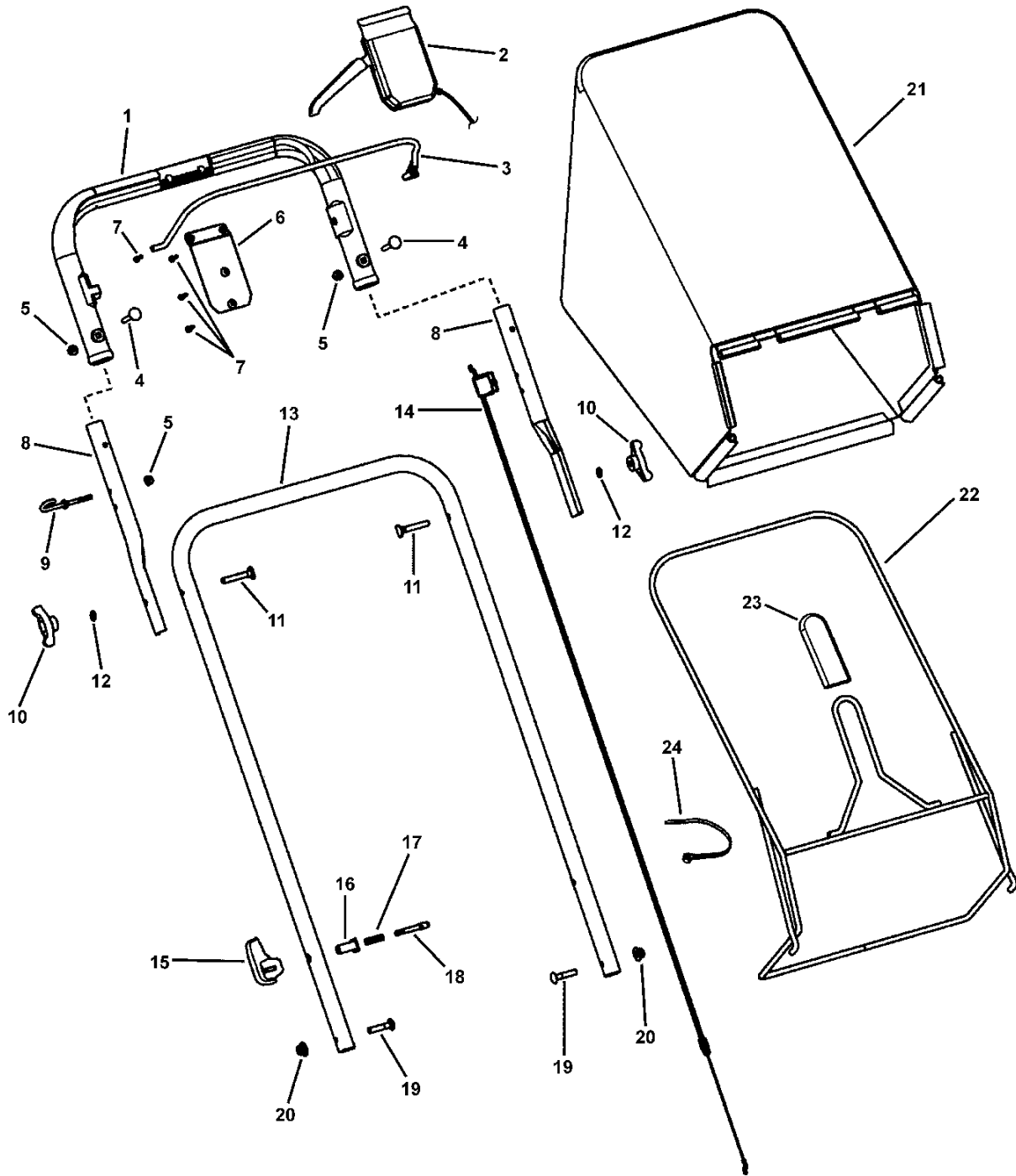


Handles & Controls (Push)

Item	Part No	Qty	Description	Note
1	7101405	1	UPPER HANDLE, Plastic, Snapper Push	
2	7101321	1	BAIL, Plastic Handle, WBM	
3	7090015	2	BOLT, 1/4-20 x 1-3/4" Round Head Square Neck, GR 2, YZ	
4	2860694	3	NUT, 1/4-20, Hex Flange (Esna) YZ	
5	7300649	2	HANDLE, Connecting, 21"/22" WBM	
6	7101410	1	ROPE GUIDE (1/4-20 thread)	
7	7035744	2	KNOB, 5/16-18 Wing (5/16-18 thread) (Black)	
8	7091189	2	BOLT, 5/16-18 x 2" Curved Head Square Neck, GR 2	
9	7090391	2	WASHER, 5/16" Internal Tooth Lock	
10	7300628	1	HANDLE, Lower, 22" WBM	
11	7101395	1	CABLE, Bail, 22" WBM	
12	7101202	2	KNOB, Quick Release	
13	7101199	2	BUSHING, Handle Pin	
14	7101200	2	SPRING, Compression	
15	7101198	2	PIN, Handle Adjust	
16	7091303	2	BOLT, 5/16-18 x 1-1/2" Round Head Short Square Neck, GR 5	was 7090958
17	7090951	2	NUT, 5/16-18 Large Flange Center Lock	
18	7101246	1	GRASS BAG, 22" Rear Discharge	
19	7101230	1	BAG FRAME, 22" WBM (Weldment)	
20	7024649	3	WIRE TIE, 11" Standard Black Nylon	
21	7026421	1	GRIP, Rectangular (Black)	

Footnotes:

Handles & Controls (Self-Propelled)

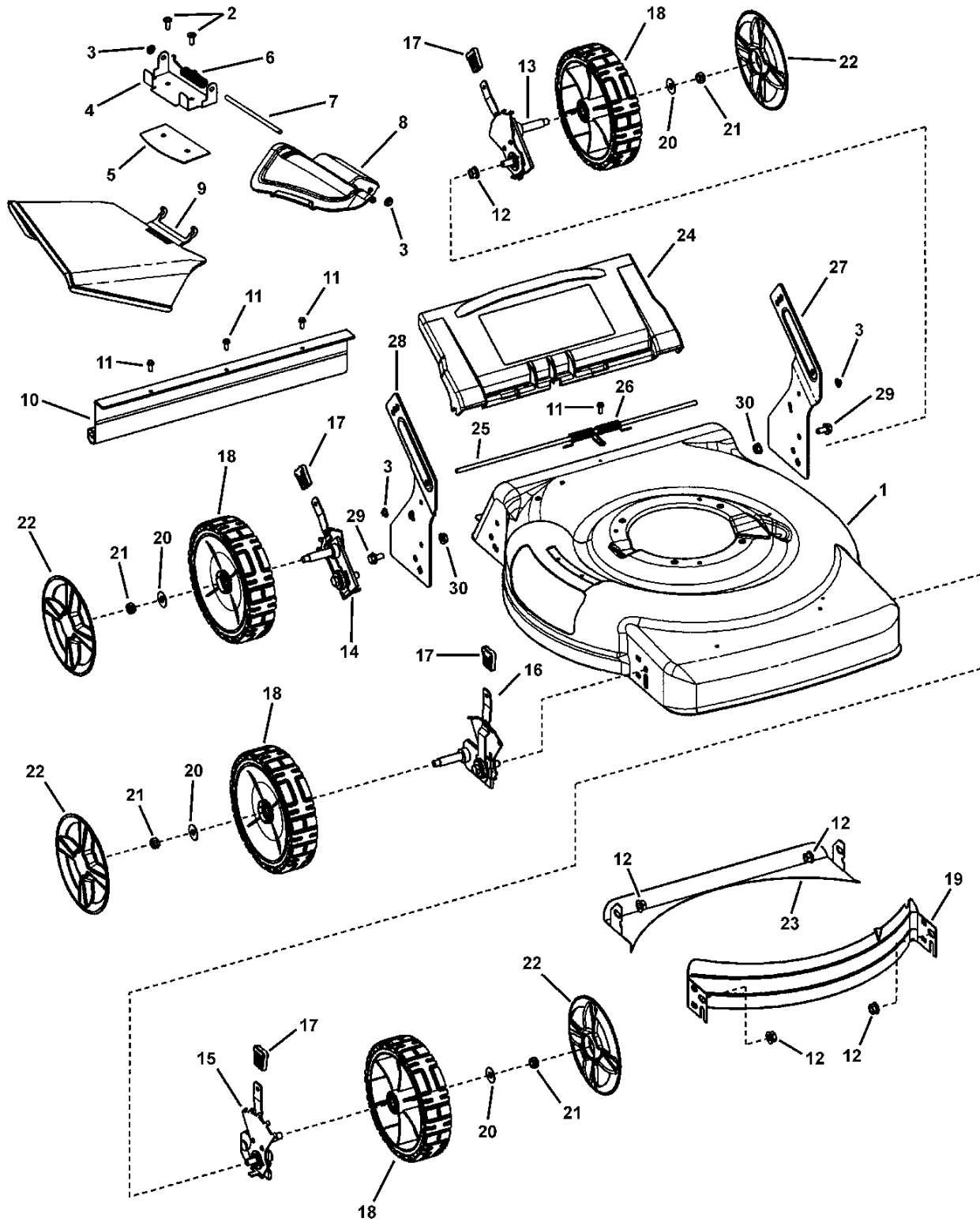


Handles & Controls (Self-Propelled)

Item	Part No	Qty	Description	Note
1	7101312	1	UPPER HANDLE, Plastic, WBM	
2	7101417	1	ASSY, Control Head, 22" WBM, Single Speed	<i>(incl.Clutch Lever, Box, & Drive Cable)</i>
3	7101321	1	BAIL, Plastic Handle, WBM	
4	7090015	2	BOLT, 1/4-20 x 1-3/4" Round Head Square Neck, GR 2, YZ	
5	2860694	3	NUT, 1/4-20, Hex Flange (Nyloc) YZ	
6	7300670	1	PLATE, Control Panel	
7	7100225	4	SCREW, #8-16 x 5/8" Recessed Pan Head Twin Helix (Torx)	
8	7300649	2	HANDLE, Connecting, 21"/22" WBM	
9	7101410	1	GUIDE, Rope (1/4-20 thread)	
10	7035744	2	KNOB, 5/16-18 Wing (5/16-18 thread) (Black)	
11	7091189	2	BOLT, 5/16-18 x 2" Curved Head Square Neck, GR 2	
12	7090391	2	WASHER, 5/16" Internal Tooth Lock	
13	7300628	1	HANDLE, Lower, 22" WBM	
14	7101395	1	CABLE, Bail, 22" WBM	
15	7101202	2	KNOB, Quick Release	
16	7101199	2	BUSHING, Handle Pin	
17	7101200	2	SPRING, Compression	
18	7101198	2	PIN, Handle Adjust	
19	7091303	2	BOLT, 5/16-18 x 1-1/2" Round Head Short Square Neck, GR 5	<i>was 7090958</i>
20	7090951	2	NUT, 5/16-18 Large Flange Center Lock	
21	7101246	1	GRASS BAG, 22" Rear Discharge	
22	7101230	1	BAG FRAME, 22" WBM (Weldment)	
23	7026421	1	GRIP, Rectangular (Black)	
24	7024649	3	WIRE TIE, 11" Standard Black Nylon	

Footnotes:

Deck Assembly (Push)



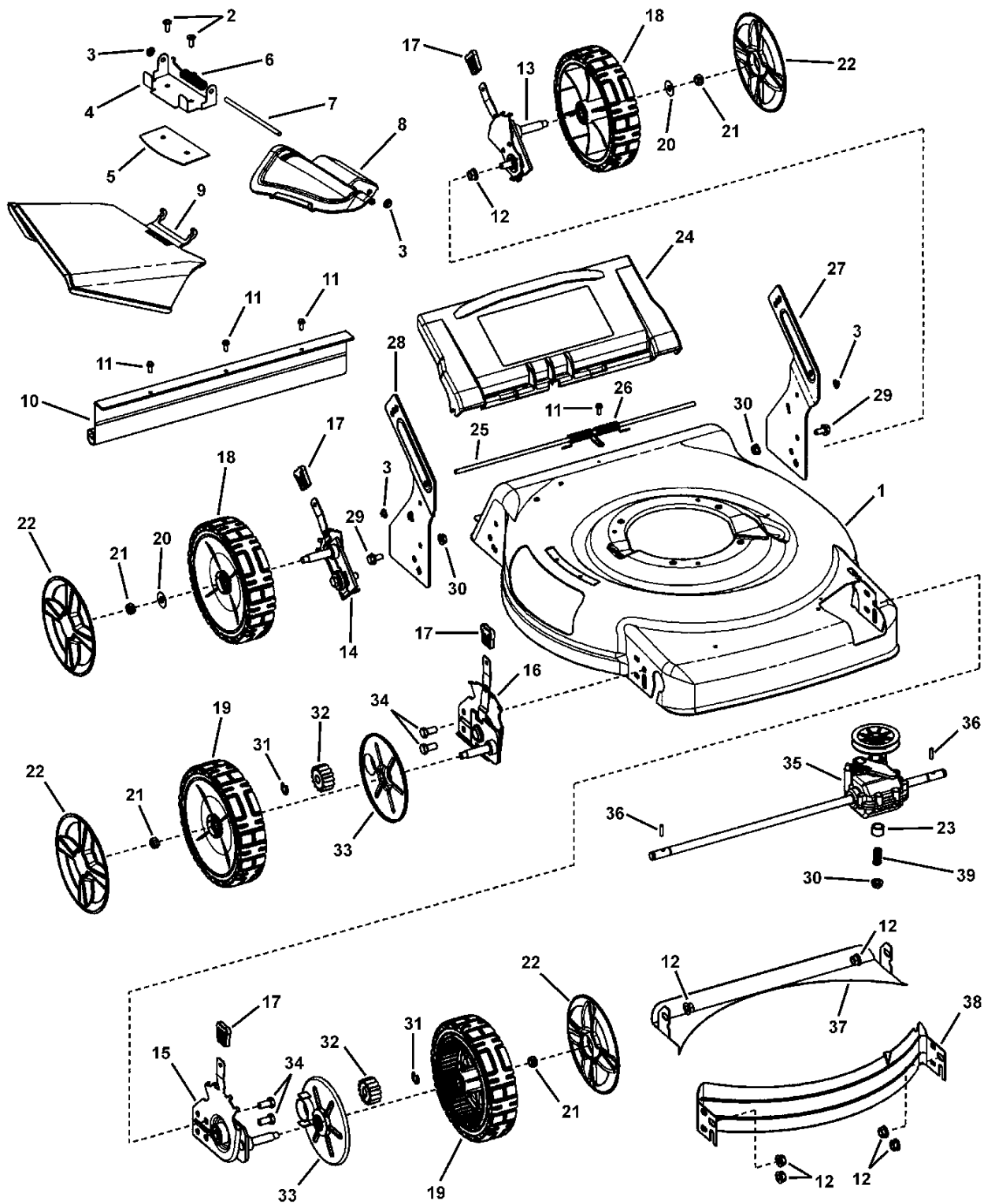
Deck Assembly (Push)

Item	Part No	Qty	Description	Note
1	7300401	1	DECK, 22" Walk	
2	722848	3	SCREW, 1/4-20 x 11/16" Pan Head Self-Tap (Torx)	
3	7091020	4	PUSHNUT, 1/4"	
4	726768	1	BRACKET, Chute	
5	726766	1	PLATE, Mulch, 22" RB Scott's	
6	722507	1	SPRING, Chute (Torsion)	
7	7101067	1	ROD, Pivot (1/4" Dia. x 5.55")	
8	721682	1	COVER, Mulch, Plastic, Black	
9	721681	1	SIDE CHUTE, Plastic, Black	
10	721685	1	GUARD, Rear	
11	7091286	4	SCREW, #10-24 x 1/2" Hex Washer Self-Tap (Sems)	
12	7091619	4	NUT, 3/8-16 Hex Flange Lock, YZ	
13	7501056	1	* ASSY, Height-Of-Cut, Right Rear, 22" WBM, Push & Propelled	
14	7501055	1	* ASSY, Height-Of-Cut, Left Rear, 22" WBM, Push & Propelled	
15	7501074	1	* ASSY, Height-Of-Cut, Left Front, 22" WBM, Push	
16	7501073	1	* ASSY, Height-Of-Cut, Right Front, 22" WBM, Push	
17	7100633	4	GRIP, Height Latch	
18	7500540	4	ASSY, Wheel & Bearing, 8 x 2 Idle, DW Tread	<i>incl. two 1-1/8" O.D. Flanged Ball Bearings (p/n 7101380)</i>
19	7300440	1	BAFFLE, Front, 22" WBM	
20	722604	4	WASHER, 1" O.D. x .387 I.D. Flat	
21	7091585	4	NUT, 3/8-16 Hex Center Lock, YZ	
22	7101350	4	HUBCAP, Black	
23	725105	1	BAFFLE, Rear, 22" Deck	
24	7101243	1	DOOR, 22" Rear	
25	7101070	1	ROD, Pivot, Rear Door (1/4" Dia. X 17-1/2")	
26	7101461	1	SPRING, Torsion, Rear Door, 22" WBM	
27	7300668	1	BRACKET, Lower Handle, RH, 22" WBM	
28	7300669	1	BRACKET, Lower Handle, LH, 22" WBM	
29	7091811	2	BOLT, 5/16-18 x 5/8" Hex Flange Lock, YZ	
30	7091601	2	NUT, 5/16-18 Flange Lock, YZ	

Footnotes:

Note: * This assembly is also shown on Height-of-Cut Assemblies page.

Deck Assembly (Self-Propelled)



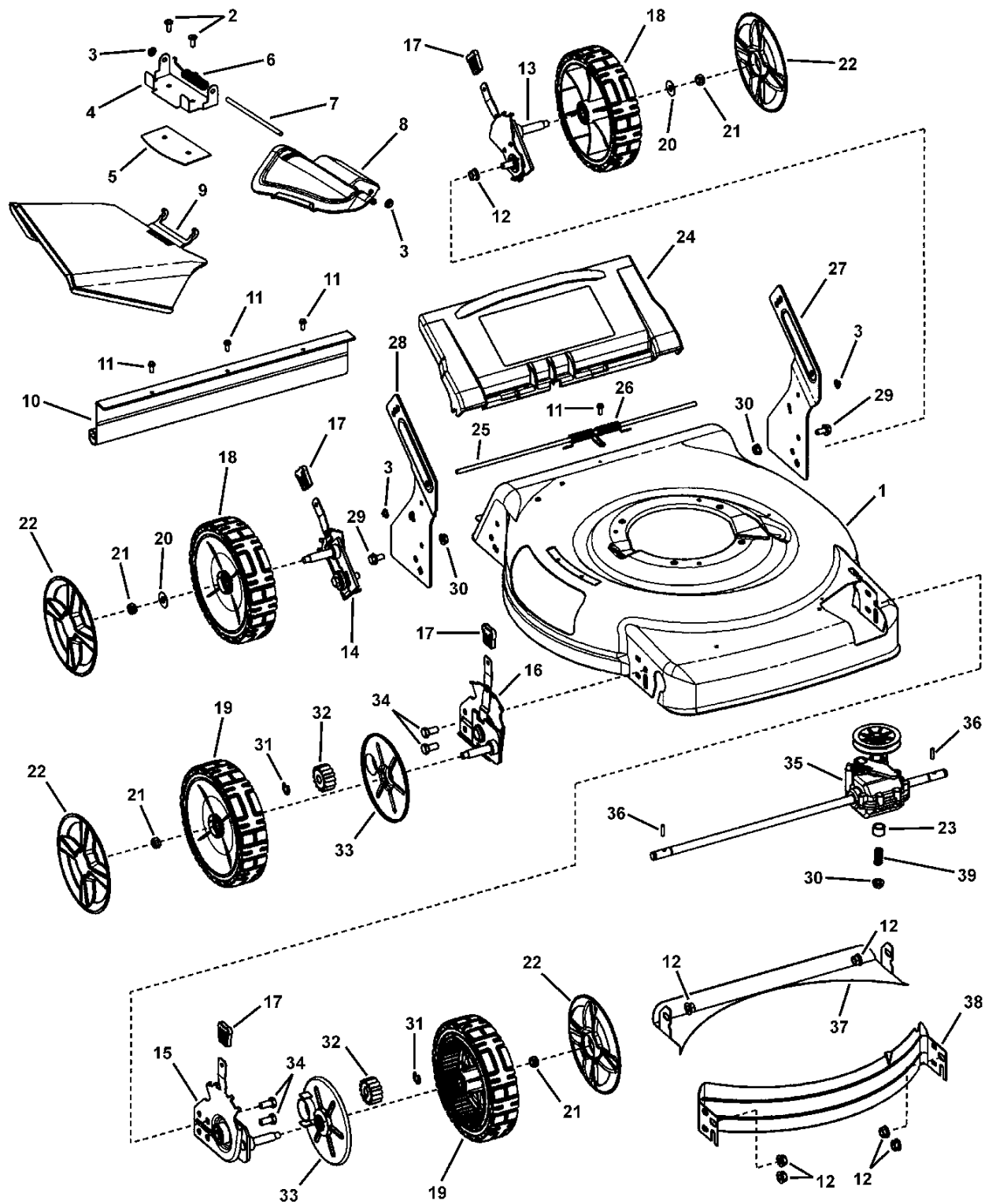
Deck Assembly (Self-Propelled)

Item	Part No	Qty	Description	Note
1	7300400	1	DECK, 22" Walk, 3 N 1	
2	722848	3	SCREW, 1/4-20 x 11/16" Pan Head Self-Tap (Torx)	
3	7091020	4	PUSHNUT 1/4"	
4	726768	1	BRACKET, Chute	
5	726766	1	PLATE, Mulch, 22" RB Scott's	
6	722507	1	SPRING, Chute (Torsion)	
7	7101067	1	ROD, Pivot (1/4" Dia. x 5.55")	
8	721682	1	COVER, Mulch, Plastic, Black	
9	721681	1	SIDE CHUTE, Plastic, Black	
10	721685	1	GUARD, Rear	
11	7091286	4	SCREW, #10-24 x 1/2" Hex Washer Self-Tap (Sems)	
12	7091619	10	NUT, 3/8-16 Hex Flange Lock, YZ	
13	7501056	1	* ASSY, Height-Of-Cut, Right Rear, 22" WBM	
14	7501055	1	* ASSY, Height-Of-Cut, Left Rear, 22" WBM	
15	7501058	1	* ASSY, Height-Of-Cut, LF, 22" WBM, Propelled	
16	7501057	1	* ASSY, Height-Of-Cut, RF, 22" WBM, Propelled	
17	7100633	4	GRIP, Height Latch	
18	7500540	2	ASSY, Wheel & Bearing, 8 x 2 Idle, DW Tread	<i>incl. two 1-1/8" O.D. Flanged Ball Bearings (p/n 7101380)</i>
19	7500542	2	ASSY, Drive Wheel & Bearing, 8 x 2, DW Tread	<i>incl. two 1-1/8" O.D. Flanged Ball Bearings (p/n 7101380)</i>
20	722604	4	WASHER, 1" O.D. x .387 I.D. Flat	
21	7091585	4	NUT, 3/8-16 Hex Center Lock, YZ	
22	7101350	4	HUBCAP, Black	
23	720508		SPACER	
24	7101243	1	DOOR, 22" Rear	
25	7101070	1	ROD, Pivot, Rear Door (1/4" Dia. X 17-1/2")	
26	7101461	1	SPRING, Torsion, Rear Door, 22" WBM	
27	7300668	1	BRACKET, Lower Handle, RH, 22" WBM	
28	7300669	1	BRACKET, Lower Handle, LH, 22" WBM	
29	7091811	2	BOLT, 5/16-18 x 5/8" Hex Flange Lock, YZ	
30	7091601	3	NUT, 5/16-18 Flange Lock, YZ	
31	7014341	4	RING, External Retaining	<i>(Waldes 5133-50)</i>
32	7101207	2	GEAR, Pinion, 22" WBM, Front Wheel Drive	
33	7101402	2	DUST SHIELD, Forward, 22" WBM	
34	7900054	4	SCREW, 3/8-16 x 3/4" Hex Head Cap, GR 5, YZ	
35	7101206	1	TRANSMISSION, 22" WBM Single Speed, Front Wheel Drive	<i>used on SP2265 & NSP22656</i>
36	7101270	2	DRIVE PIN, 22" WBM, Front Wheel Drive	
37	725105	1	BAFFLE, Rear, 22" Deck	

Footnotes:

Note: * This assembly is also shown on Height-of-Cut Assemblies page.

Deck Assembly (Self-Propelled)



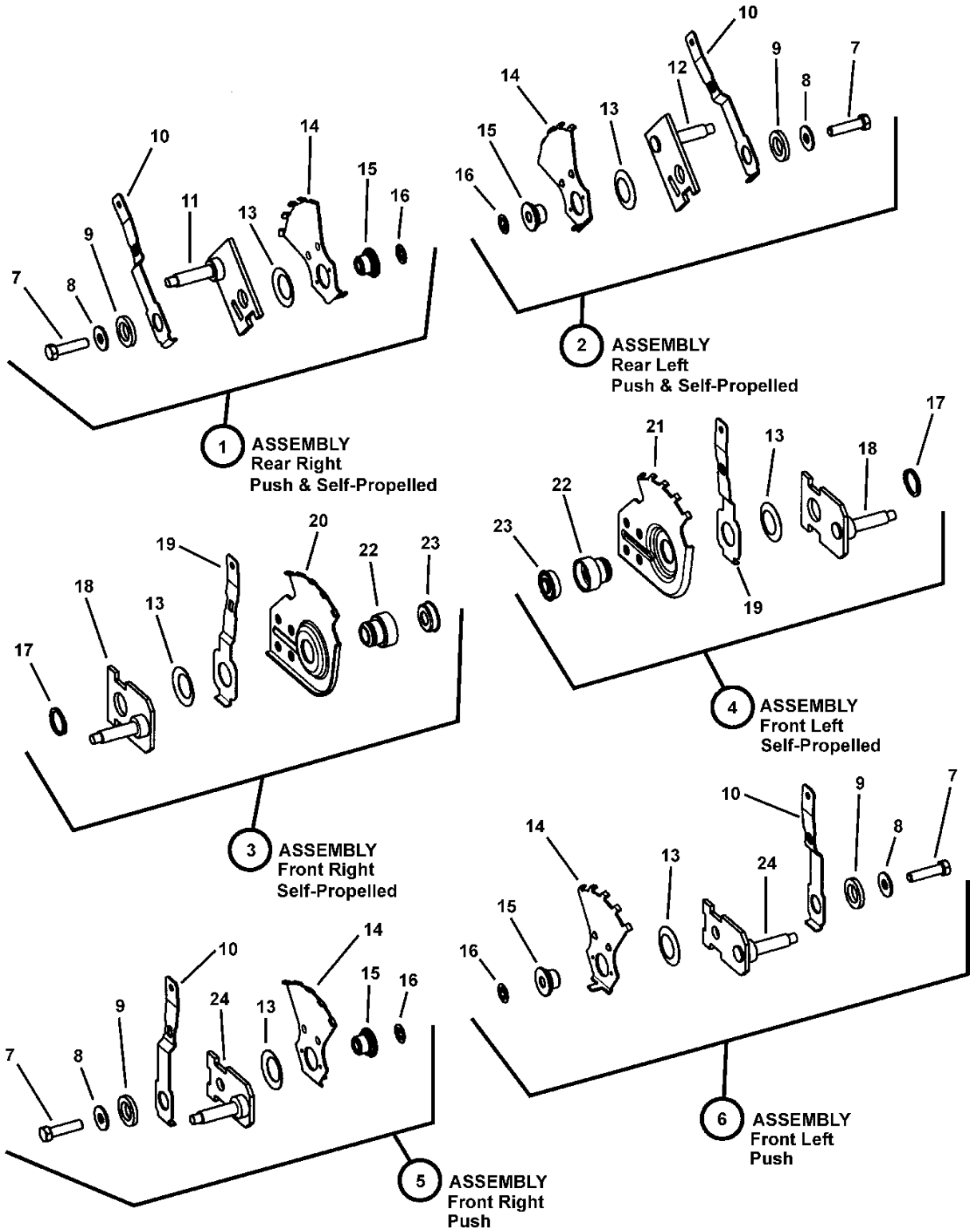
Deck Assembly (Self-Propelled)

Item	Part No	Qty	Description	Note
38	7300440	1	BAFFLE, Front, 22" WBM	
39	722410	1	SPRING, Compression	

Footnotes:

Note: * This assembly is also shown on Height-of-Cut Assemblies page.

Height-of-Cut Assemblies

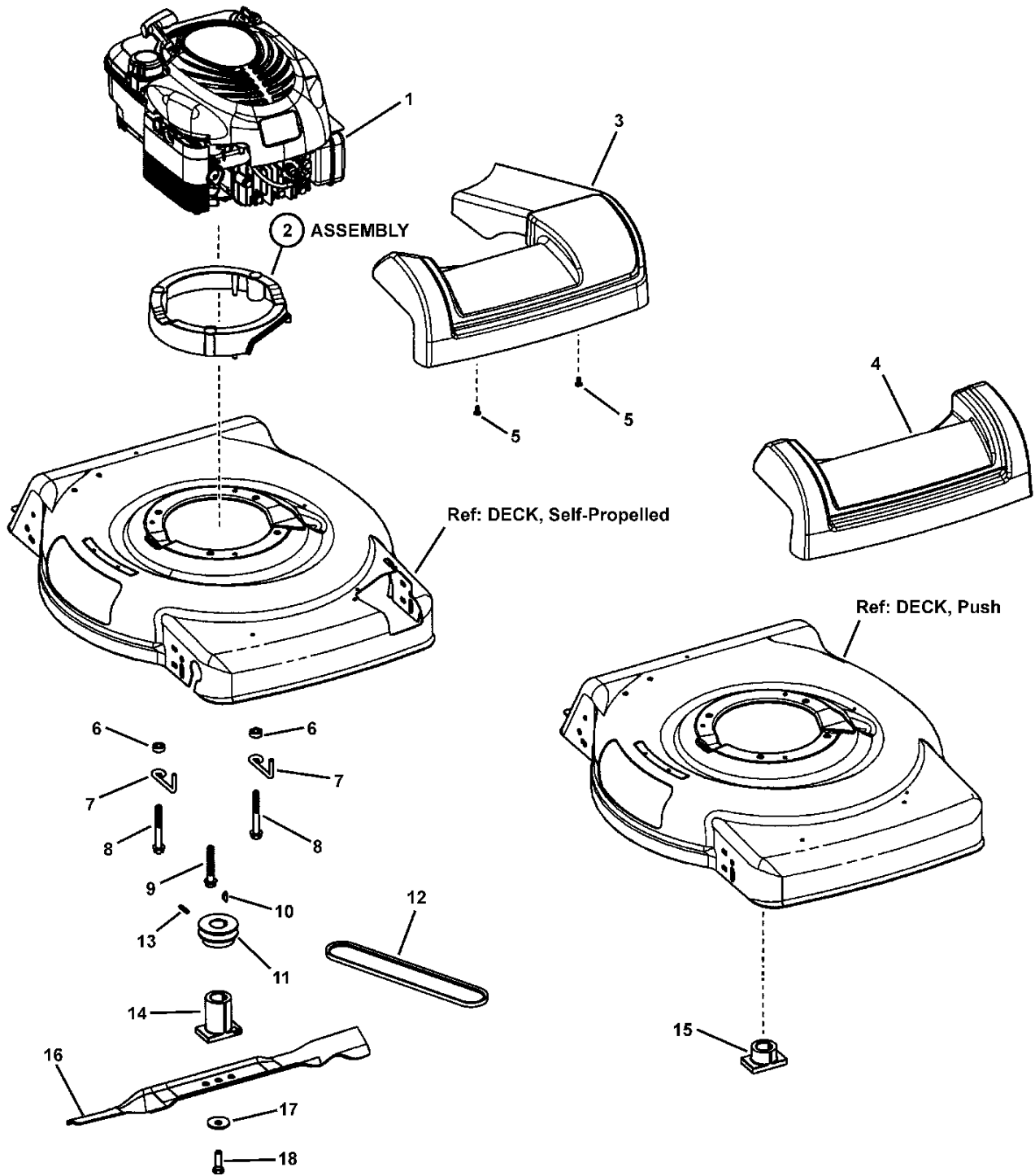


Height-of-Cut Assemblies

Item	Part No	Qty	Description	Note
1	7501056	1	* ASSY, Height-Of-Cut, Right Rear, 22" WBM, Push & Propelled	
2	7501055	1	* ASSY, Height-Of-Cut, Left Rear, 22" WBM, Push & Propelled	
3	7501057	1	* ASSY, Height-Of-Cut, RF, 22" WBM, Propelled	
4	7501058	1	* ASSY, Height-Of-Cut, LF, 22" WBM, Propelled	
5	7501073	1	* ASSY, Height-Of-Cut, Right Front, 22" WBM, Push	
6	7501074	1	* ASSY, Height-Of-Cut, Left Front, 22" WBM, Push	
7	7091497	1	SCREW, 3/8-16 x 1-1/2" Hex Head Cap, GR 5, YZ	
8	7900047	1	WASHER, .391 x 1" x 14 Ga. Flat	
9	7900046	1	WASHER, .76 x 1.25 x .180 Flat	
10	7101205	1	LEVER, Height-Of-Cut, 22" WBM	
11	7500409	1	ASSY, Rear Axle, RH 22" WBM	
12	7500408	1	ASSY, Rear Axle, LH 22" WBM	
13	722611	1	WASHER, 1" I.D. x 1.64 O.D. Bellville	
14	7300529	1	INDEX PLATE, Height-Of-Cut, Rear	
15	721899	1	SPACER, Height Adjust	
16	7013847	1	RETAINER, 3/8" Bolt	
17	720118	1	RING, .906 I.D. x .078 Thick, External Retaining	
18	7500404	1	ASSY, Front Axle 22", Propelled	
19	7101212	1	LEVER, Height-Of-Cut, 22" WBM	
20	7300528	1	INDEX PLATE, Height-Of-Cut, Front Right, 22" WBM	
21	7300527	1	INDEX PLATE, Height-Of-Cut, Front Left, 22" WBM	
22	720685	1	RETAINER, Bearing	
23	720761	1	BALL BEARING, 1/2 I.D. x 1-1/8" O. D. Flanged w/seal	
24	7500476	1	ASSY, Front Axle, 22" WBM, Push	

Footnotes:

Note: * This assembly is also shown on Deck Assembly page.



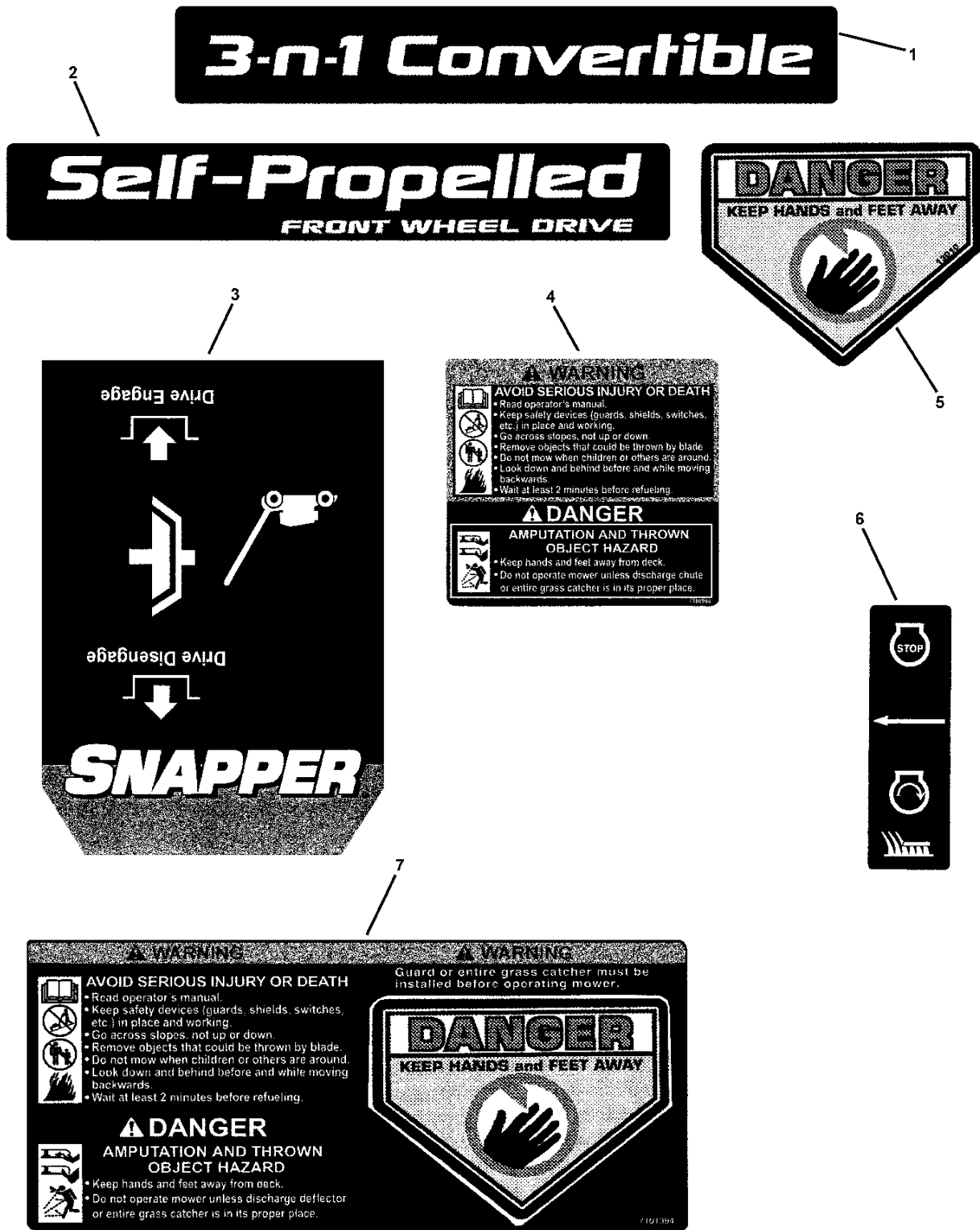
Engine, Blade & Front Cover

Item	Part No	Qty	Description	Note
1	--	1	* ENGINE, B&S, 650 Ser, (124T02-0650-B3)	<i>used on S2265 & SP2265</i>
1	--	1	* ENGINE, B&S, 650 Ser, (124L02-0650-F3)	<i>used on NS2265 & NSP2265</i>
2	7101449	1	ASSY, Engine Spacer, 22" WBM, Self-Propelled	<i>includes 7101209 (spacer) & 7101448 (3) (bushings)</i>
3	7101195	1	FRONT COVER, Deck, 22" Front Wheel Drive	
4	7101310	1	FRONT COVER, Rear Discharge Push WBM	
5	7900018	2	SCREW, 4.8 x 1.59 x 13mm, Round Washer Head Hi-Lo (Torx)	
6	7101302	2	SPACER, BELT GUIDE, 22" VS	
7	7101024	2	BELT GUIDE, Engine, 22" VS	
8	7101451	2	HWST, 3/8-16 X 3.00	
9	720351	1	BOLT, 3/8-16 NS x 2-1/2"	
10	7091214	1	KEY, #HP-506 HI-PRO	
11	7100763	1	PULLEY, Engine, 22" Deck, Single Speed	
12	7101193	1	** BELT, Drive (3L Section; 33.75" effective length)	<i>used on SP2265</i>
13	7092086	1	SET SCREW, 5/16-18 x 1/2" Hex Recess	
14	7100740	1	BLADE HUB, 22" Deck, Self Propelled	
15	7100862	1	BLADE HUB, 22" Deck, Push	
16	7100851	1	BLADE, 22", Walk Mower	
17	721890	1	WASHER, .38" I.D. x 1.183 O.D. Bellville	
18	7090824	1	SCREW, 3/8-24 x 1-1/4" Hex Head Cap, GR 5	

Footnotes:

NOTE: * Purchase engine parts from engine manufacturer dealer.

Note: ** Part number appears on belt



Decals

Item	Part No	Qty	Description	Note
1	7101537	1	DECAL, Front Cover, 22" Snapper, Push	
2	7101538	1	DECAL, Front Cover, 22" Snapper, Single Speed	
3	7101429	1	DECAL, Control Head, MY 08	
4	7100984	1	DECAL, Warning/Danger WBM	
5	7013010	1	DECAL, Danger, Cut Finger	
6	7029782	1	DECAL, OPC Bail International Symbol	
7	7101394	1	DECAL, Warning, Rear Discharge Door	
		1	DECAL, OPEI Walk/Ride	<i>not shown; not a service part</i>

Footnotes:

Parts Manual for

SNAPPER[®]

22" STEEL DECK WALK BEHIND MOWERS

IT IS THE POLICY OF BRIGGS & STRATTON CORP. TO IMPROVE ITS PRODUCTS WHENEVER IT IS POSSIBLE AND PRACTICAL TO DO SO. WE RESERVE THE RIGHT TO MAKE CHANGES OR ADD IMPROVEMENTS AT ANY TIME WITHOUT INCURRING ANY OBLIGATION TO MAKE SUCH CHANGES ON PRODUCTS MANUFACTURED

Briggs & Stratton Yard Power Products Group

535 Macon Road
McDonough, GA, 30253 U.S.A.
800-935-2967

www.snapper.com

Copyright © 2008 Briggs & Stratton Corporation
Milwaukee, WI USA. All Rights Reserved

Manual No. 7006258
Revision IR, 4/7/2008
TP 400-5393-IR-WB-N